

**SAMPLE BALLOT**  
**REPUBLICAN PRIMARY ELECTION**  
**MESA COUNTY, COLORADO**  
**AUGUST 11, 1992**

**VOTING INSTRUCTIONS**

**Step 1** Using both hands, insert the ballot card all the way into the Vote Recorder.

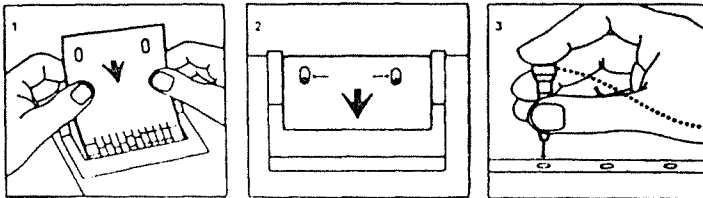
**Step 2** Be sure the two slots in the end of your card fit down **over the two red pins**.

**Step 3** To vote, hold the voting instrument **straight up**. **Punch straight down through** the ballot card for your choice.

**Do not use pen or pencil.**

**Step 4** After voting, remove the ballot card from the Vote Recorder.

**Note:** If you make a mistake return your ballot card and obtain another.



**TURN PAGE TO BEGIN VOTING.**

---

OFFICIAL REPUBLICAN BALLOT  
PRIMARY ELECTION – AUGUST 11, 1992

United States  
Senator  
(Vote for One)

Terry Considine

59 →

Representative to the  
103rd U.S. Congress  
3rd Congressional District  
(Vote for One)

Scott McInnis

62 →

Regent of the University  
of Colorado At Large  
(Vote for One)

Jim Martin

66 →

Lindsey V. Maness, Jr.

67 →

**TURN PAGE  
CONTINUE VOTING**



OFFICIAL REPUBLICAN BALLOT  
PRIMARY ELECTION — AUGUST 11, 1992

Member of the House  
of Representatives  
District 55  
(Vote for One)

District Attorney  
21st Judicial District  
(Vote for One)

County Commissioner  
District 1  
(Vote for One)

County Commissioner  
District 3  
(Vote for One)

Steve ErkenBrack

88 →

John Crouch

91 →

Thomas A. Logue

94 →