



Purchasing Division

ADDENDUM NO. 2

DATE: December 9, 2020
FROM: City of Grand Junction Purchasing Division
TO: All Offerors
RE: GRJM 21.5-G.95 Culvert Replacement IFB-4853-21-DH

Offerors responding to the above referenced solicitation are hereby instructed that the requirements have been clarified, modified, superseded and supplemented as to this date as hereinafter described.

Please make note of the following clarifications:

1. Q. What is to be done with the 12" AC pipe on the west side of 21.5 Road?

A. See attached drawings to address this item. See attached updated Price Bid Schedule. Contractor shall utilize the Addendum 2 Price Bid Schedule when submitting their bid response.

The original solicitation for the project noted above is amended as noted.

All other conditions of subject remain the same.

Respectfully,

A handwritten signature in black ink, appearing to read "Duane Hoff Jr.", written over a white background.

Duane Hoff Jr., Senior Buyer
City of Grand Junction, Colorado

Bid Schedule: GRJM-21.5-G.95 Culvert Replacement (Addendum 2)

Item No.	CDOT, City Ref.	Description	Quantity	Units	Unit Price	Total Price
1	108.2	60" Culvert (HDPE)	100.	Lin. Ft.	\$ _____	\$ _____
2	108.2	10" Irrigation Pipe (SDR 35 PVC) (Includes all fittings)	20.	Lin. Ft.	\$ _____	\$ _____
3	201-00000	Clearing and Grubbing	450.	Sq. Yd.	\$ _____	\$ _____
4	202-00220	Removal of Asphalt Mat	122.	Sq. Yd.	\$ _____	\$ _____
5	202	Removal of Existing Pipe (CMP)	90.	Lin. Ft.	\$ _____	\$ _____
6	202	Removal of Existing Pipe Sleeve (12" AC) (Includes Disposal)	12.	Lin. Ft.	\$ _____	\$ _____
7	202	Removal of Fence (Barbed Wire, 36" High)	6.	Lin. Ft.	\$ _____	\$ _____
8	203-00000	Unclassified Excavation (Complete in Place)	Lump Sum		- - -	\$ _____
9	206-00065	Structural Backfill Material (Flow-fill, Complete in Place)	200.	Cubic Yd.	\$ _____	\$ _____
10	206-00100	Structural Backfill Material (Class 1, Complete in Place)	1,034.	Cubic Yd.	\$ _____	\$ _____
11	208-00070	Vehicle Track Pad	2.	Each	\$ _____	\$ _____
12	208-00011	Erosion Bales (Weed Free)	4.	Each	\$ _____	\$ _____
13	208-00045	Concrete Washout Structure	1.	Each	\$ _____	\$ _____
14	211-03005	Dewatering (To be used for Pritchard Wash Bypass if needed)	Lump Sum		- - -	\$ _____
15	212-00007	Seeding (Native) (Hydraulic)	450.	Sq. Yd.	\$ _____	\$ _____
16	304	Aggregate Base Course (Class 6) complete in place	56.	Cubic Yd.	\$ _____	\$ _____
17	403-34752	Hot Mix Asphalt (Patching) (Grading SX) (75)(PG 64-22) (4" Thick)	31.	Ton	\$ _____	\$ _____
18	420-00300	Geotextile (Mirafi 500x)	220.	Sq. Yd.	\$ _____	\$ _____

Bid Schedule: GRJM-21.5-G.95 Culvert Replacement (Addendum 2)

Item No.	CDOT, City Ref.	Description	Quantity	Units	Unit Price	Total Price
19	601	Concrete Wall (Class D) per M and S Standard M-601-20 (Wall Design Height 3' to 7' per plan). (Includes associated headwall, toe walls and toe wall attached to walls beneath 21.5 Road.) Work shall include Reinforcing Steel (Epoxy Coated), Structural Concrete Coating (Exterior of wall), and any necessary appurtenances to complete work.	15.	Cubic Yd.	\$ _____	\$ _____
20	606	Guardrail Type 3 (31 IN MGS). (Includes Installation)	37.5	Lin. Ft.	\$ _____	\$ _____
21	606	Transition Type 3J (31 IN MGS), R = 8'-6", 105° angle. (Includes Installation)	1.	Each	\$ _____	\$ _____
22	606	Transition Type 3J (31 IN MGS), R = 8'-6", 75° angle. (Includes Installation)	1.	Each	\$ _____	\$ _____
23	606	End Anchorage Type 3K (Includes Installation)	1.	Each	\$ _____	\$ _____
24	620-00020	Sanitary Facility	1.	Each	\$ _____	\$ _____
25	625-00000	Construction Surveying		Lump Sum	---	\$ _____
26	626-00000	Mobilization		Lump Sum	---	\$ _____
27	630	Traffic Control (Complete in Place, Road Closure)		Lump Sum	---	\$ _____
28	700-70170	F/A Pothole Utilities	---	---	---	<u>\$ 6,000.00</u>
MCR		Minor Contract Revisions	---	---	---	<u>\$ 25,000.00</u>
Bid Amount:						\$ _____

Bid Amount:

dollars

Item No.	CDOT, City Ref.	Description	Quantity	Units
1	108.2	60" Culvert (HDPE)	100.	Lin. Ft.
2	108.2	10" Irrigation Pipe (SDR 35 PVC) (Includes all fittings)	20.	Lin. Ft.
3	201-00000	Clearing and Grubbing	450.	Sq. Yd.
4	202-00220	Removal of Asphalt Mat	122.	Sq. Yd.
5	202	Removal of Existing Pipe (CMP)	90.	Lin. Ft.
6	202	Removal of Existing Pipe Sleeve (12" AC) (Includes Disposal)	12.	Lin. Ft.
7	202	Removal of Fence (Barbed Wire, 36" High)	6.	Lin. Ft.
8	203-00000	Unclassified Excavation (Complete in Place)		Lump Sum
9	206-00065	Structural Backfill Material (Flow-fill, Complete in Place)	200.	Cubic Yd.
10	206-00100	Structural Backfill Material (Class 1, Complete in Place)	1,034.	Cubic Yd.
11	208-00070	Vehicle Track Pad	2.	Each
12	208-00011	Erosion Bales (Weed Free)	4.	Each
13	208-00045	Concrete Washout Structure	1.	Each
14	211-03005	Dewatering (To be used for Pritchard Wash Bypass if needed)		Lump Sum
15	212-00007	Seeding (Native) (Hydraulic)	450.	Sq. Yd.
16	304	Aggregate Base Course (Class 6) complete in place	56.	Cubic Yd.
17	403-34752	Hot Mix Asphalt (Patching) (Grading SX) (75)(PG 64-22) (4" Thick)	31.	Ton
18	420-00300	Geotextile (Mirafi 500x)	220.	Sq. Yd.

1

Item No.	CDOT, City Ref.	Description	Quantity	Units
19	601	Concrete Wall (Class D) per M and S Standard M-601-20 (Wall Design Height 3' to 7' per plan). (Includes associated headwall, toe walls and toe wall attached to walls beneath 21.5 Road.) Work shall include Reinforcing Steel (Epoxy Coated), Structural Concrete Coating (Exterior of wall), and any necessary appurtenances to complete work.	15.	Cubic Yd.
20	606	Guardrail Type 3 (31 IN MGS). (Includes Installation)	37.5	Lin. Ft.
21	606	Transition Type 3J (31 IN MGS), R = 8'-6", 105° angle. (Includes Installation)	1.	Each
22	606	Transition Type 3J (31 IN MGS), R = 8'-6", 75° angle. (Includes Installation)	1.	Each
23	606	End Anchorage Type 3K (Includes Installation)	1.	Each
24	620-00020	Sanitary Facility	1.	Each
25	625-00000	Construction Surveying		Lump Sum
26	626-00000	Mobilization		Lump Sum
27	630	Traffic Control (Complete in Place, Road Closure)		Lump Sum

EARTHWORKS	
CUT	861 Cubic Yd.
FILL	1034 Cubic Yd.

REVISION	DESCRIPTION	DATE	DRAWN BY	KSO	DATE	2020	SCALES: PLAN & PROFILE
REVISION	△ Addendum #2	- 12/9/2020	DESIGNED BY	KA	DATE	2020	
REVISION	△	-	CHECKED BY	XXX	DATE	201X	
REVISION	△	-	APPROVED BY	XXX	DATE	201X	



PUBLIC WORKS
ENGINEERING DIVISION

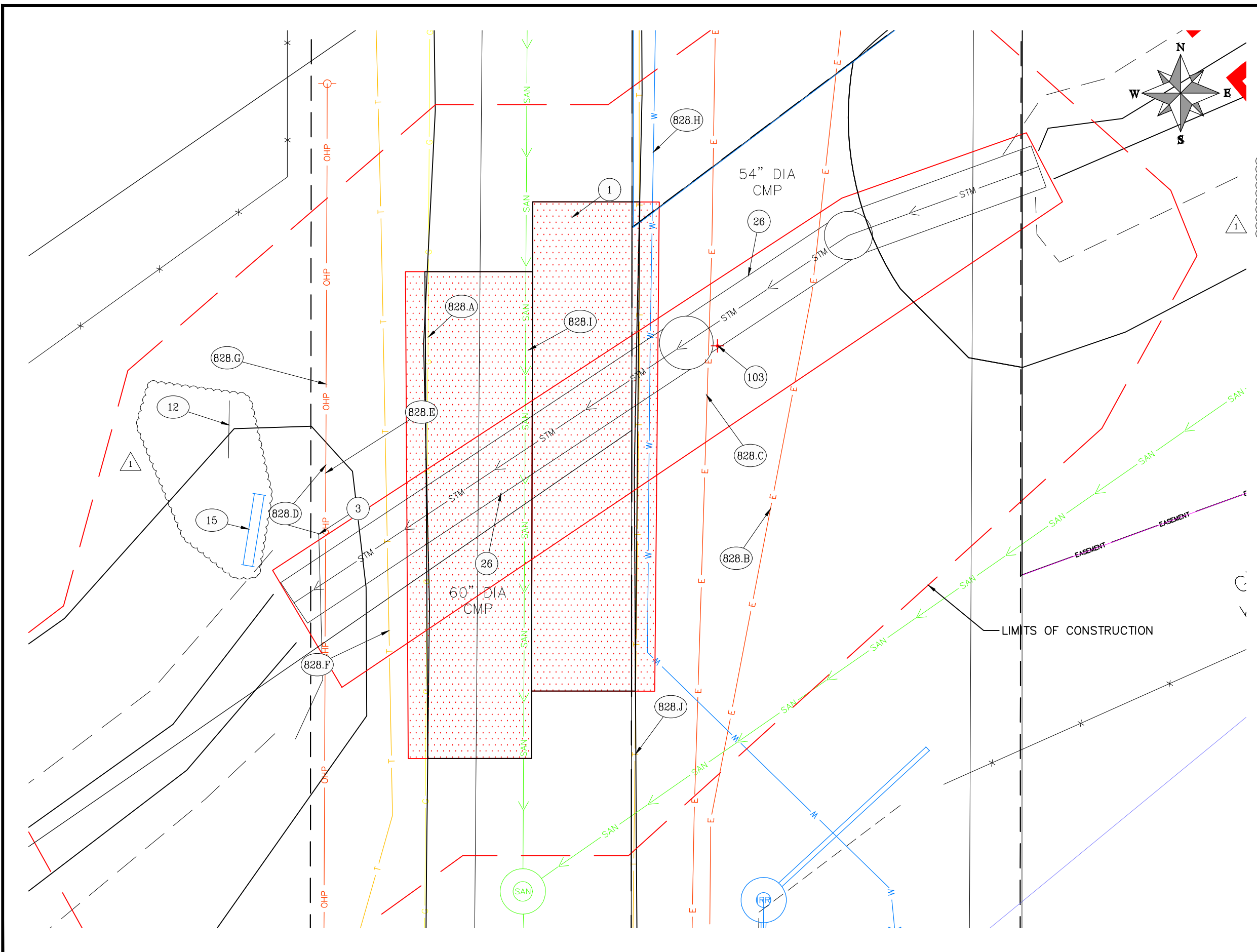
GRJM-21.5-G.95 CULVERT REPLACEMENT
SUMMARY OF APPROXIMATE QUANTITIES

CONSTRUCTION NOTES

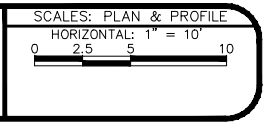
- ① 202 - REMOVAL OF ASPHALT MAT. CUT AND REMOVE ASPHALT AS SHOWN. (INDICATED BY DOT HATCH PATTERN)
- ③ 202 - REMOVAL OF CONCRETE. SAW CUT AND REMOVE CONCRETE AS SHOWN. (INDICATED BY CROSS HATCH PATTERN) INCLUDES BUT NOT LIMITED TO CURB, GUTTER, SIDEWALK, DRIVEWAY, SLABS, V-PAN, CURB RAMPS, INTERSECTION CORNERS, APRONS, AND LANDSCAPE BORDERS.
- ⑫ 202 - REMOVAL OF FENCE (BARBED WIRE, 36" HIGH)
- ⑮ 202 - REMOVAL OF PIPE SLEEVE (12" AC, INCLUDED DISPOSAL) PROTECT 10" PVC PIPE AND EXTEND PER PLAN
- ⑳ 202 - REMOVAL OF EXISTING CULVERT. (SIZE AND TYPE AS SHOWN ON PLAN)
- ⑩③ 210 - REMOVE AND RESET SIGN - BY CITY
- ⑧②⑧ 828 - PROTECT EXISTING UTILITIES IN PLACE. SEE TABLE BELOW FOR MORE INFORMATION ABOUT EACH UTILITY. ALSO SEE PROJECT SPECIFICATIONS - UTILITY SECTION FOR COORDINATION WITH UTILITY OWNERS.

PROTECT UTILITIES

	UTILITY	OWNER
①	PROTECT 2" GAS LINE	XCEL ENERGY
②	PROTECT 6" ELECTRIC LINE	XCEL ENERGY
③	PROTECT 6" ELECTRIC LINE	GRAND VALLEY POWER
④	PROTECT OVERHEAD POWER	GRAND VALLEY POWER
⑤	PROTECT OVERHEAD CABLE	CHARTER?
⑥	PROTECT 2 TELEPHONE LINES	CENTURY LINK
⑦	PROTECT OVERHEAD FIBER OPTIC	UNITED PRIVATE NETWORK
⑧	PROTECT 8" WATER LINE	UTE WATER
⑨	PROTECT 8" SANITARY SEWER	CITY OF GRAND JUNCTION
⑩	PROTECT 2" FIBER OPTIC	CENTURY LINK



REVISION	DESCRIPTION	DATE	DRAWN BY	KSO	DATE	2020
REVISION Δ	ADDENDUM #2	12/9/2020	DESIGNED BY	KA	DATE	2020
REVISION Δ			CHECKED BY	XXX	DATE	201X
REVISION Δ			APPROVED BY	XXX	DATE	201X



PUBLIC WORKS
ENGINEERING DIVISION

GRJM-21.5-G.95 CULVERT REPLACEMENT
DEMOLITION PLAN
STA 0+00 TO STA 1+15

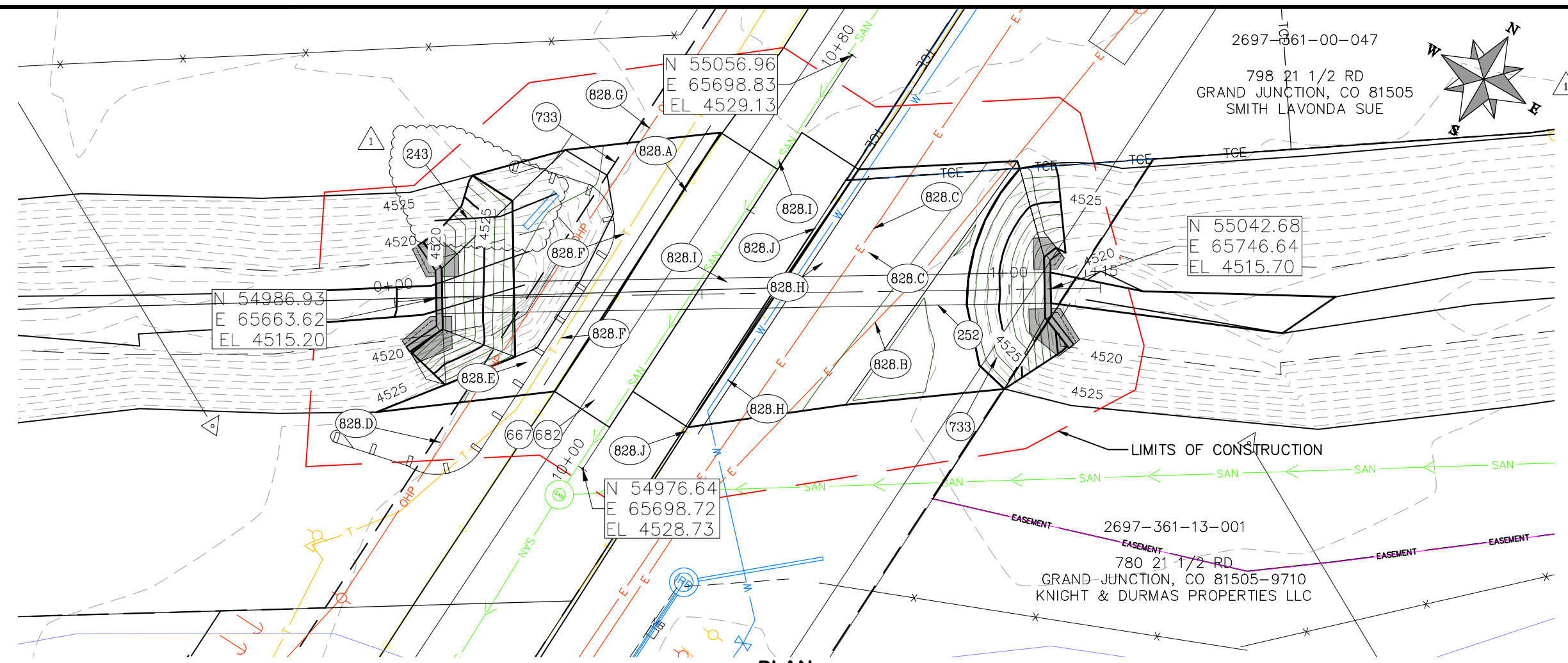
N:\Landproj\2019 GRJM 21.5-G.95 Culvert Repl\dwg\culvert_4-27-20.dwg, 12/9/2020 8:33:29 AM

- (243) 108.2 - 10" IRRIGATION PIPE (SDR 35 PVC) - EXTEND (2) 10 FT LENGTHS WITH (2) 22½ DEG. ELBOWS TO NEW DAYLIGHT BEYOND NEW WING WALL
- (252) 108.2 - 60" CULVERT (HDPE)
- (667) 304 - AGGREGATE BASE COURSE (CLASS 6) (6" THICK)
- (682) 401.08 - HOT BITUMINOUS PAVEMENT (PATCHING) (4" THICK) (GRADING SX, PG 64-22, GYR.=75) (TWO 2" LIFT)
- (733) 212 - HYDROSEED WITH NATIVE SEED MIX.
- (828) PROTECT UTILITIES

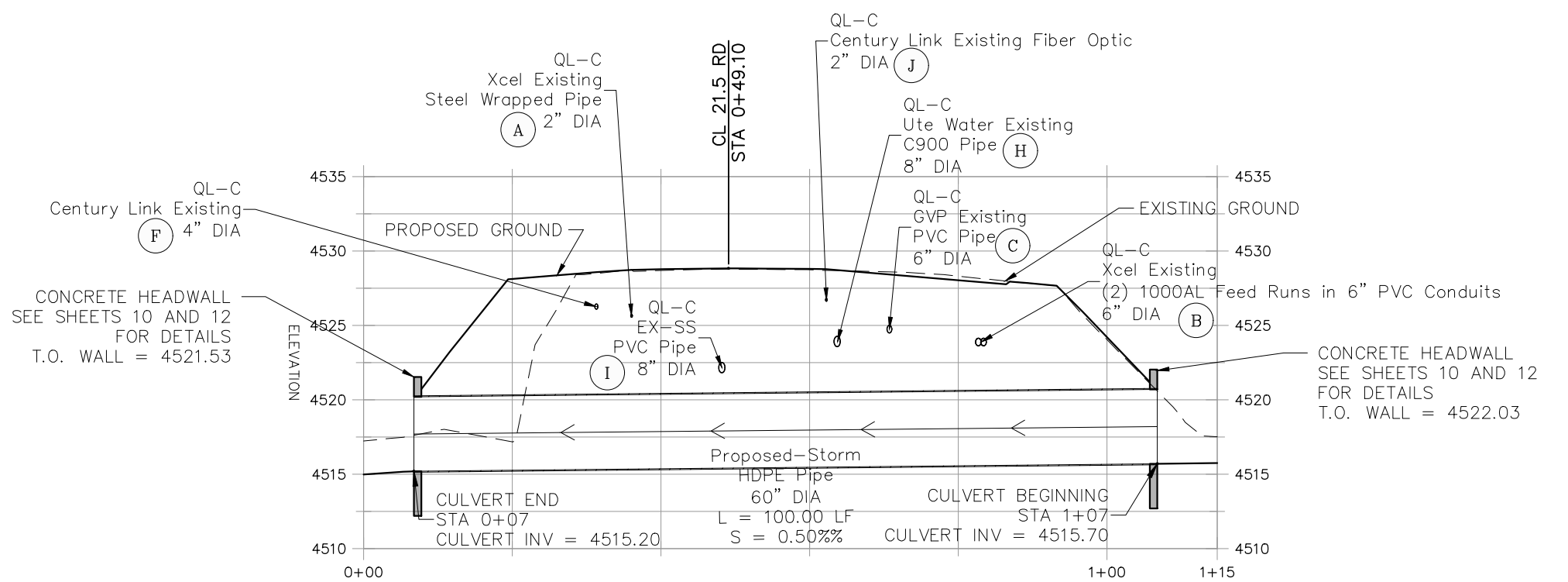
NOTE:
 ALL UTILITIES DEPICTED AT QUALITY LEVEL B (QL-B) UNLESS OTHERWISE NOTED.

PROTECT UTILITIES

	UTILITY	OWNER
(A)	PROTECT 2" GAS LINE	XCEL ENERGY
(B)	PROTECT 6" ELECTRIC LINE	XCEL ENERGY
(C)	PROTECT 6" ELECTRIC LINE	GRAND VALLEY POWER
(D)	PROTECT OVERHEAD POWER	GRAND VALLEY POWER
(E)	PROTECT OVERHEAD CABLE	CHARTER
(F)	PROTECT 2 TELEPHONE LINES	CENTURY LINK
(G)	PROTECT OVERHEAD FIBER OPTIC	UNITE PRIVATE NETWORKS
(H)	PROTECT 8" WATER LINE	UTE WATER
(I)	PROTECT 8" SANITARY SEWER	CITY OF GRAND JUNCTION
(J)	PROTECT 2" FIBER OPTIC	CENTURY LINK



PLAN



PROFILE

REVISION	DESCRIPTION	DATE	DRAWN BY	DATE
REVISION Δ	ADDENDUM #2	12/9/2020	KSO	2020
REVISION Δ			DESIGNED BY KA	2020
REVISION Δ			CHECKED BY XXX	201X
REVISION Δ			APPROVED BY XXX	201X

SCALES: PLAN & PROFILE

HORIZONTAL: 1" = 20'

VERTICAL: 1" = 10'



**PUBLIC WORKS
 ENGINEERING DIVISION**

**GRJM-21.5-G.95 CULVERT REPLACEMENT
 PLAN AND PROFILE
 STA 0+00 TO STA 1+15**

N:\Landproj\2019 GRJM 21.5-G.95 Culvert Repl\dwg\culvert_4-27-20.dwg, 12/9/2020 8:28:31 AM