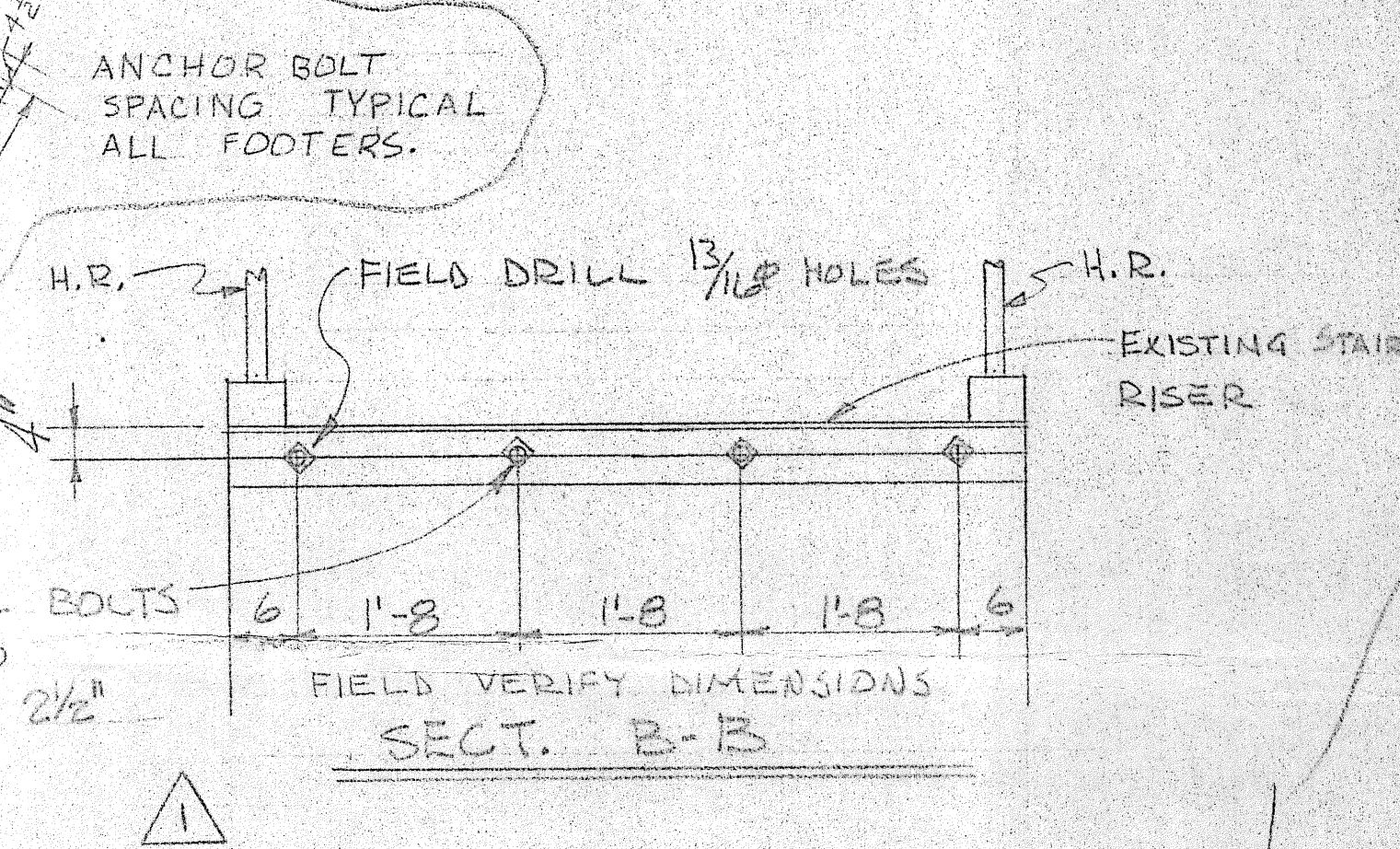
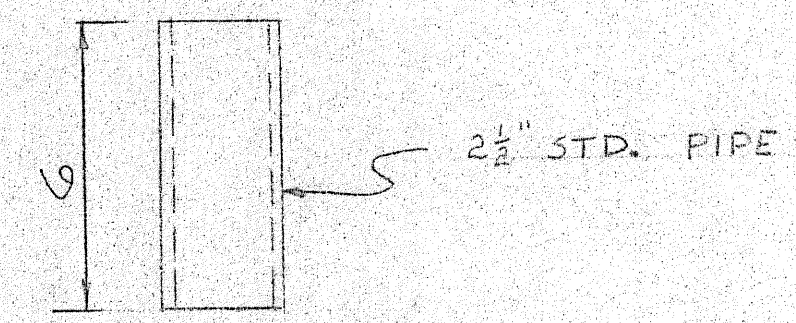
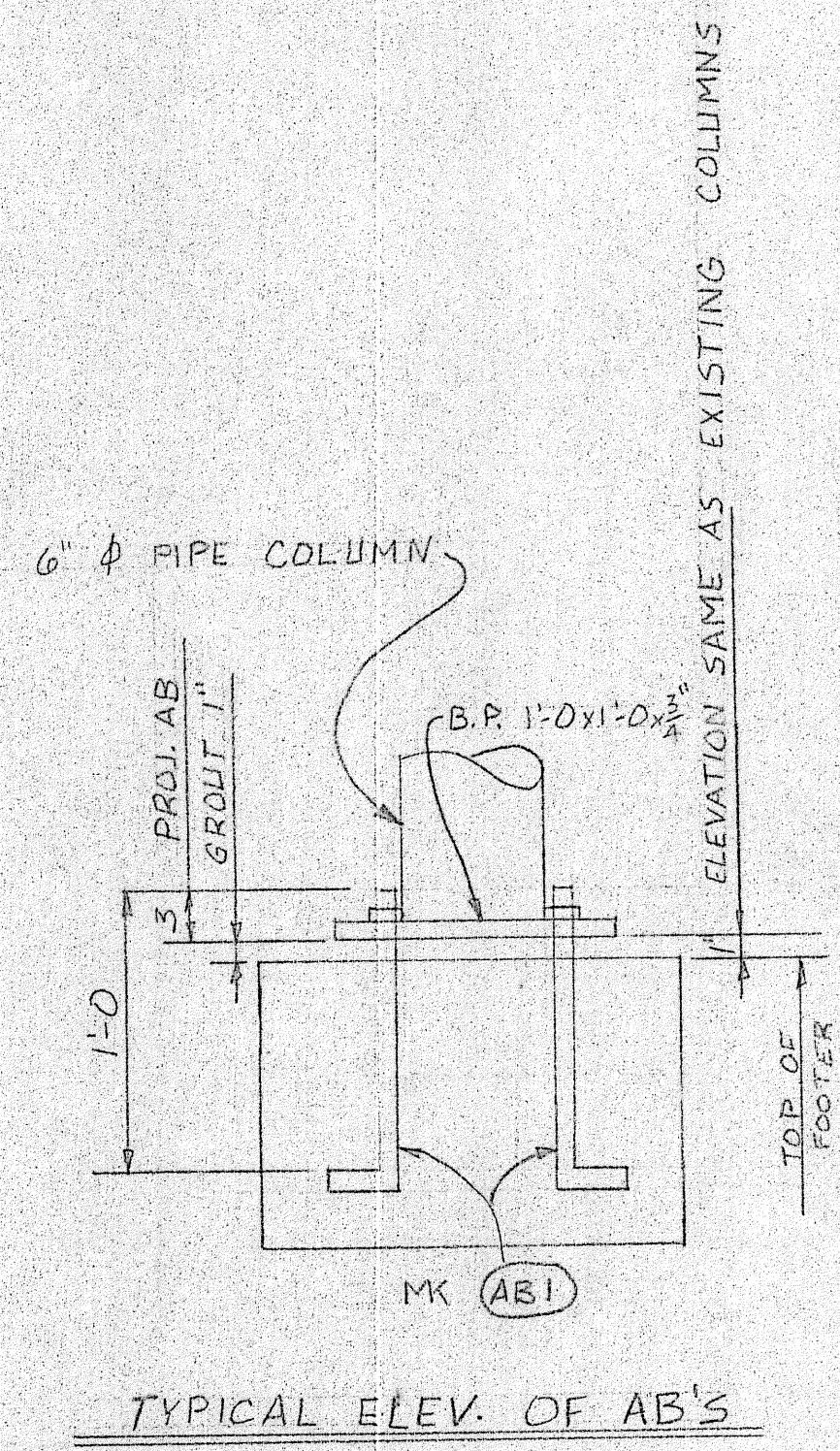


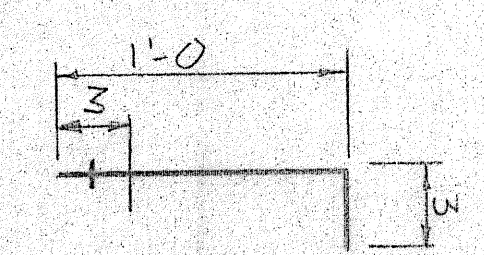
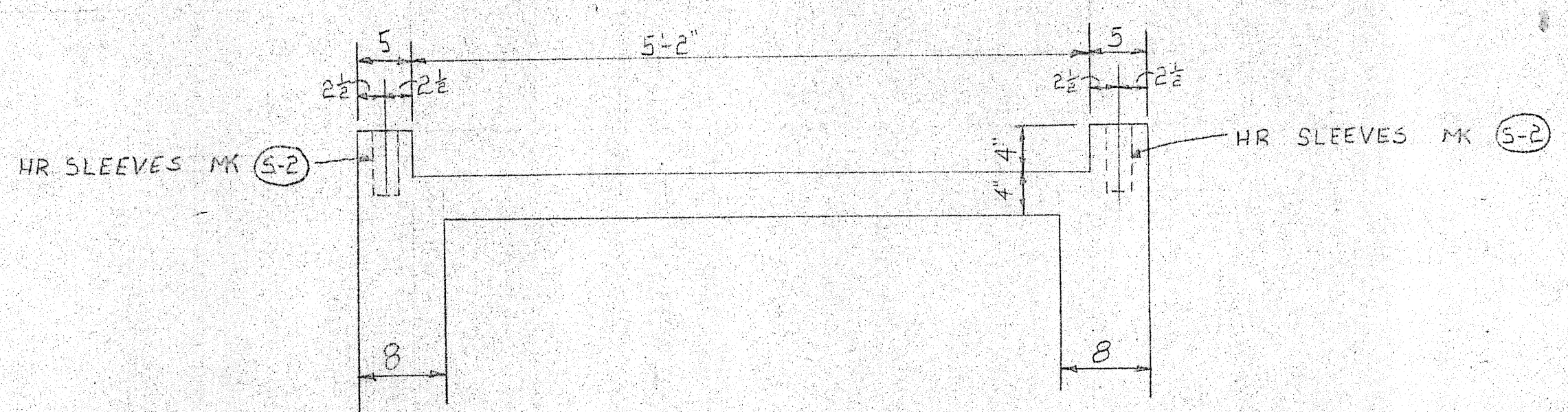
4 ~ ANCHOR BOLTS ~ MK AB-3



FOUNDATION PLAN



20 ~ HR. SLEEVES ~ MK S-2



ROD - 3/4" X 1'-3"  
NUTS - 3/4" HEX  
NO PAINT  
76 ~ ANCHOR BOLTS ~ MK AB-1

SECTION A-A

**SHOP DRAWING REVIEW**

Review is only for general conformity with the design concept and is limited to equipment called for by the contract documents. Contractor is responsible for the accuracy of dimensions, quantities, and details. No liability is assumed for other material or equipment not shown or not specified solely to the technique of fabrication or construction.

..... No Exceptions Taken  
 ..... Make Corrections Noted  
 ..... Approved and Resubmit  
 ..... Rejected

ARIX, A PROFESSIONAL CORPORATION  
 ENGINEER - ARCHITECTS - PLANNERS  
 Greeley, Grand Junction, Colorado  
 Riverton, Wyoming

Date: \_\_\_\_\_ By: \_\_\_\_\_

FOR APPROVAL ONLY  
 RECEIVED  
 FEB 15 1983  
 ARIX

**DOUGHTY STEEL & MACHINE**  
 Phone 303 / 874-7518  
 685 STATE HWY. 92 P.O. BOX 690  
 DELTA, COLORADO 81416 U.S.A.

STOCKER STADIUM  
 BASEBALL STANDS

RECEIVED  
 FEB 22 1983  
 ARIX

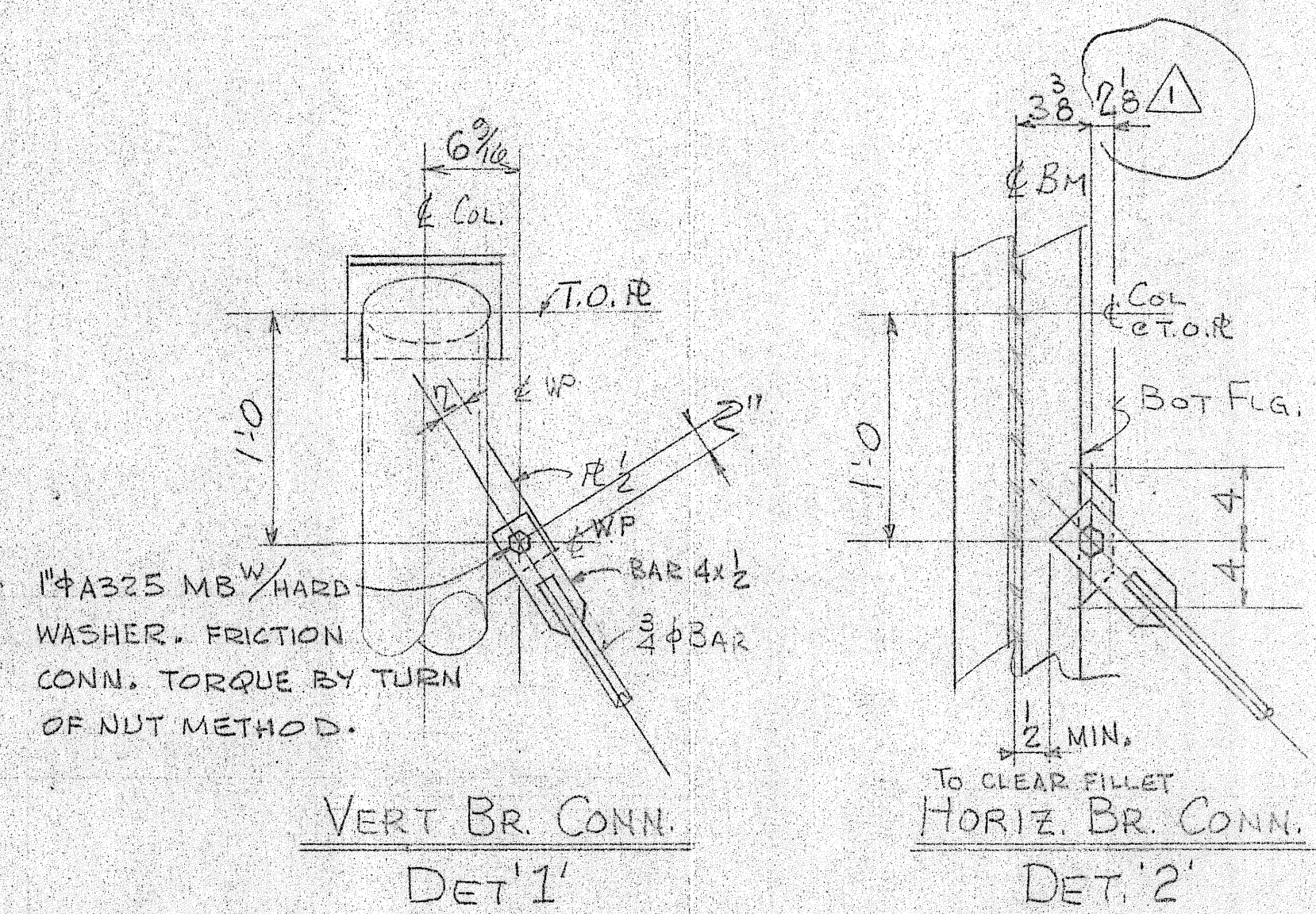
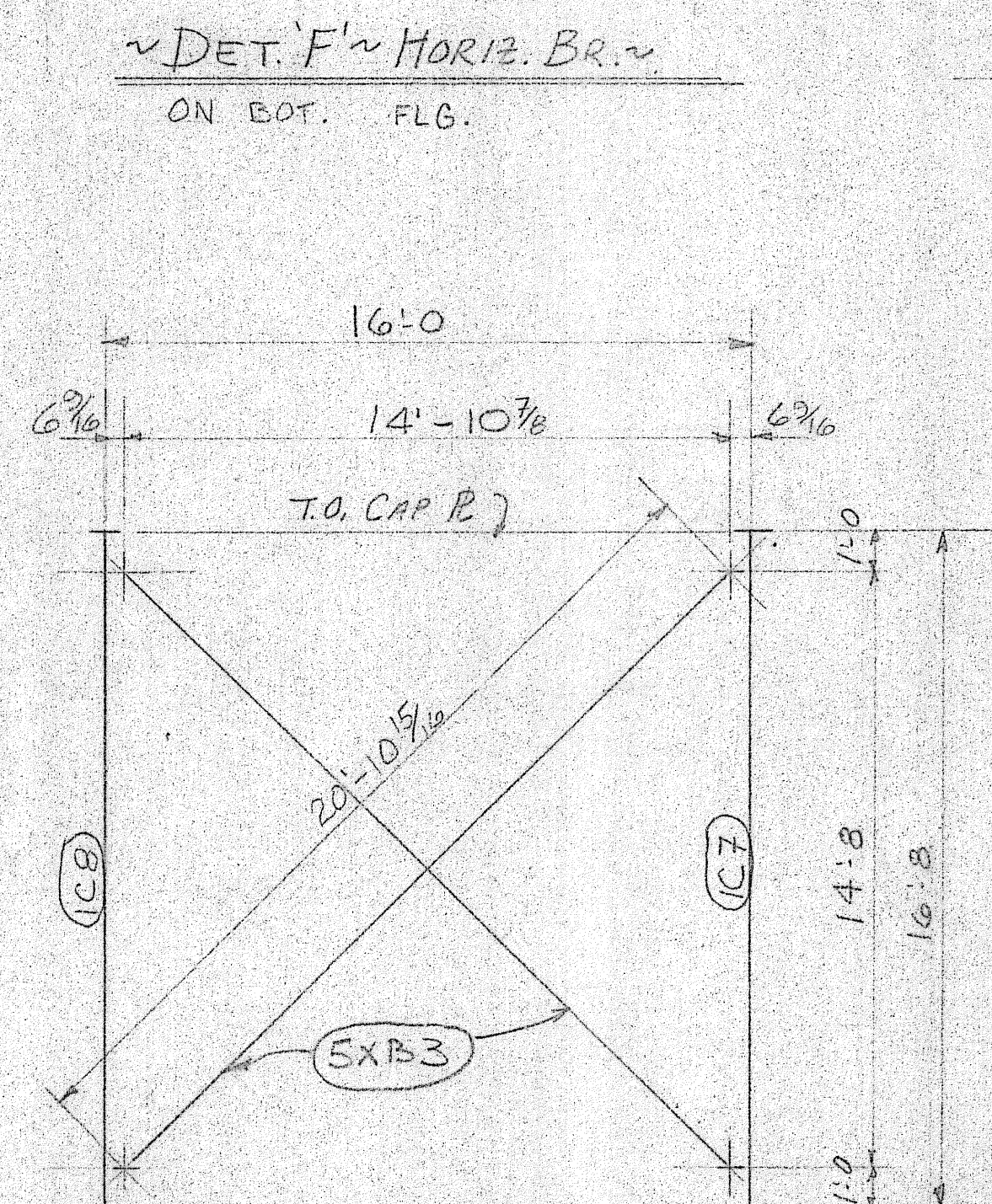
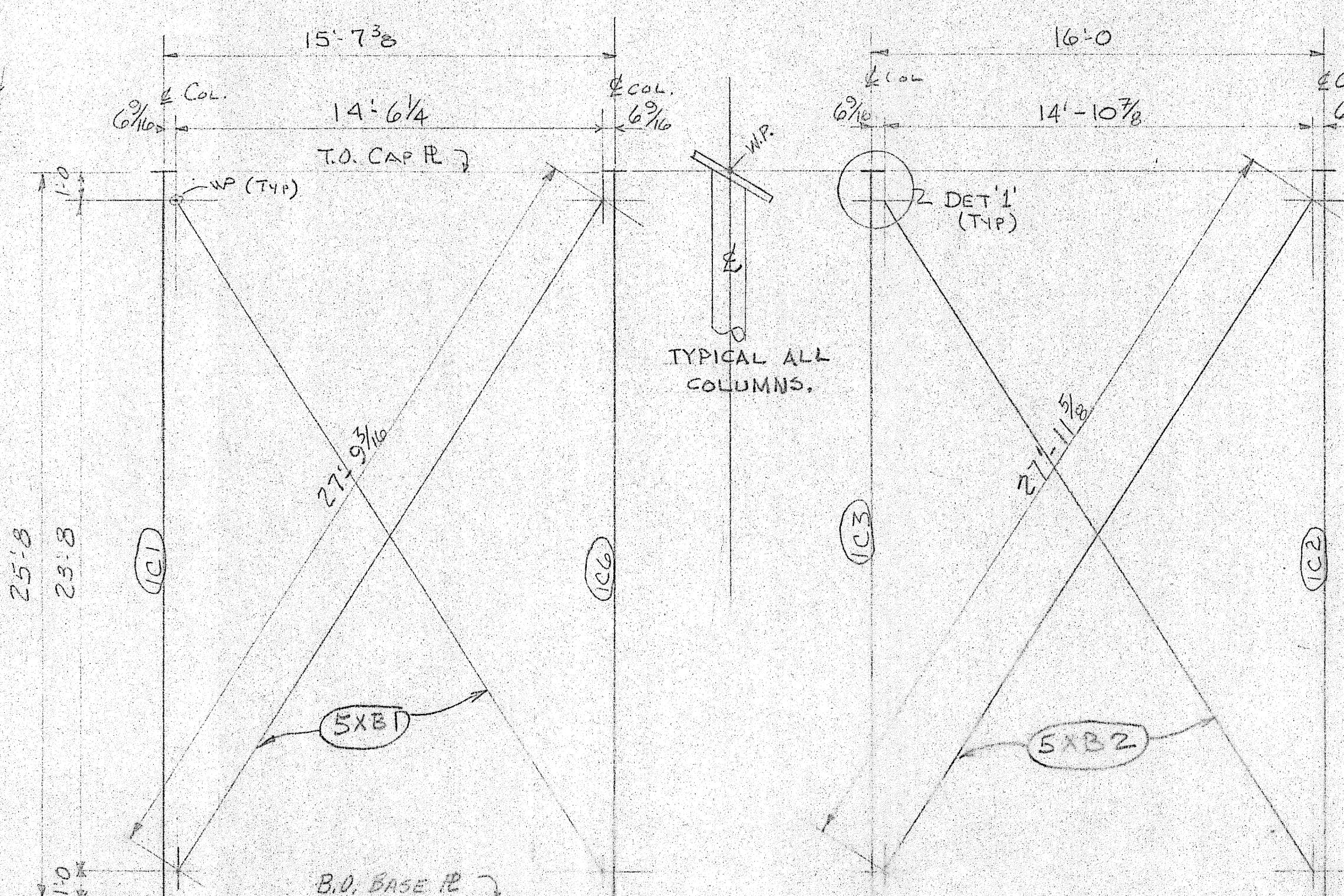
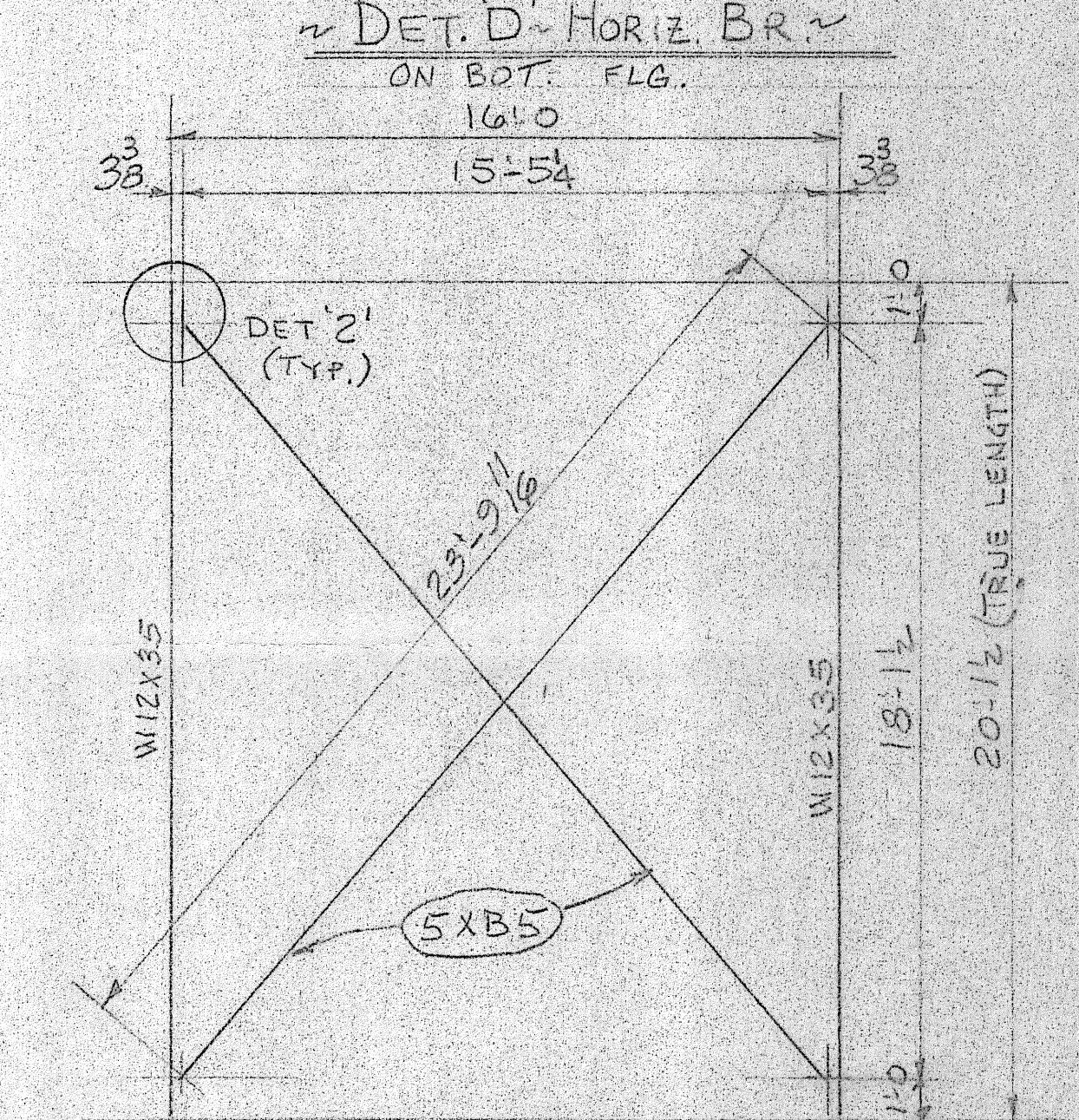
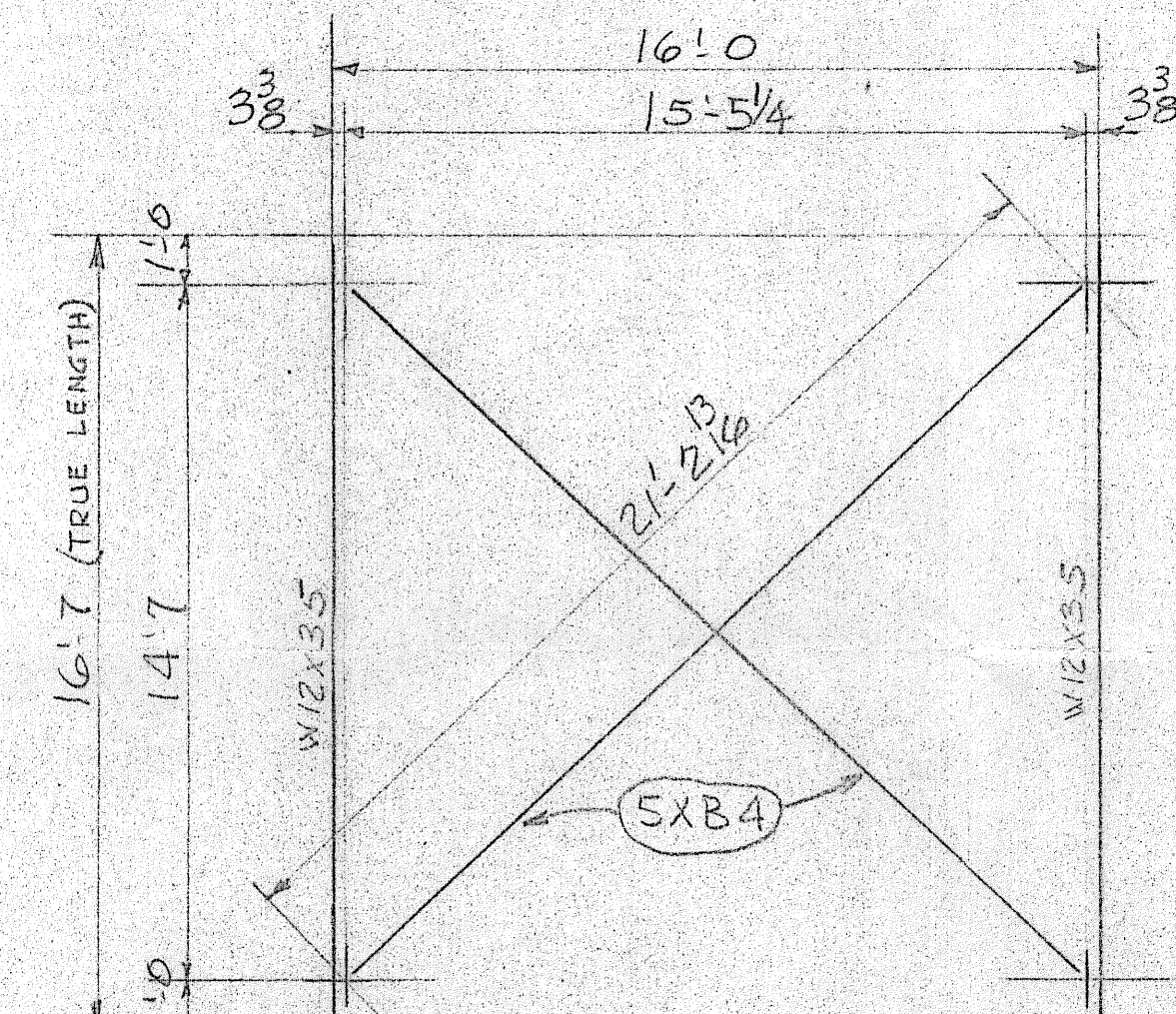
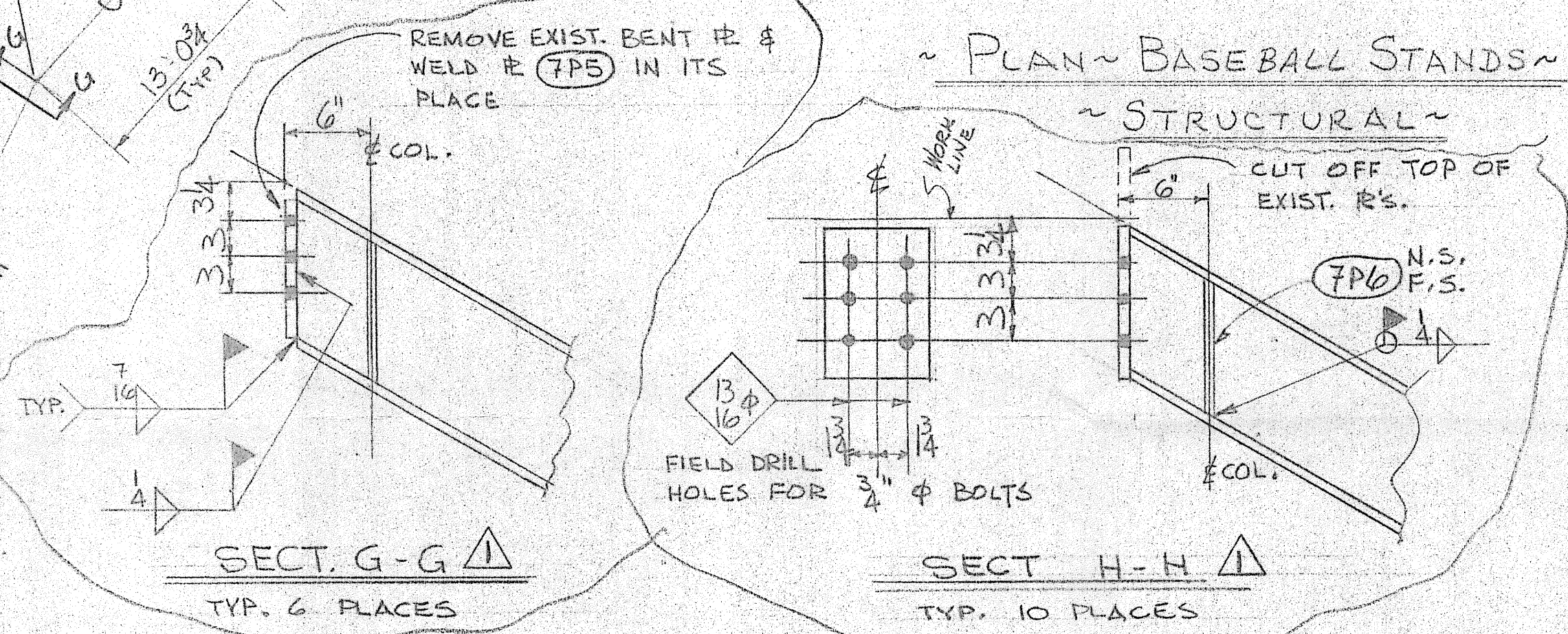
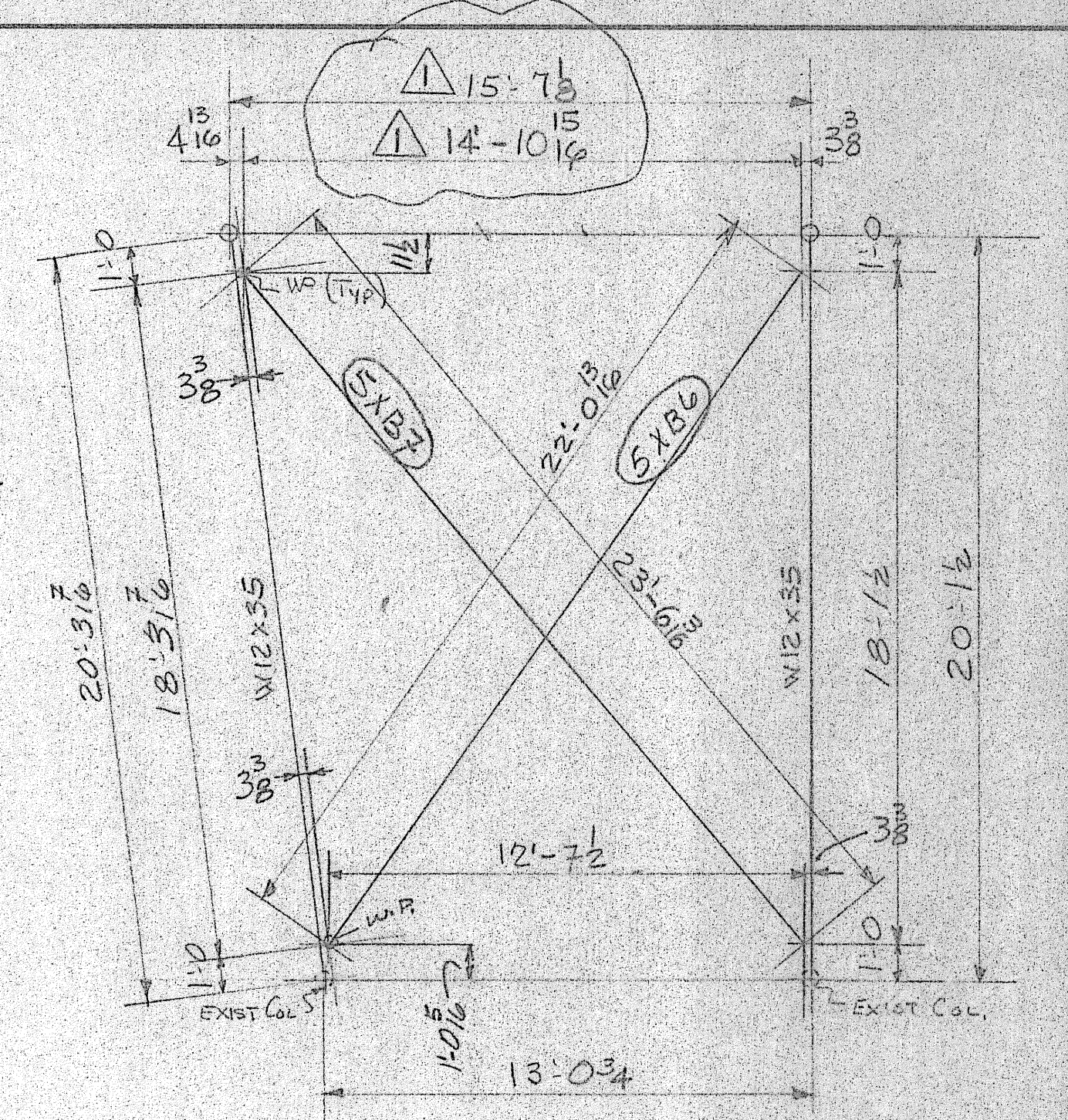
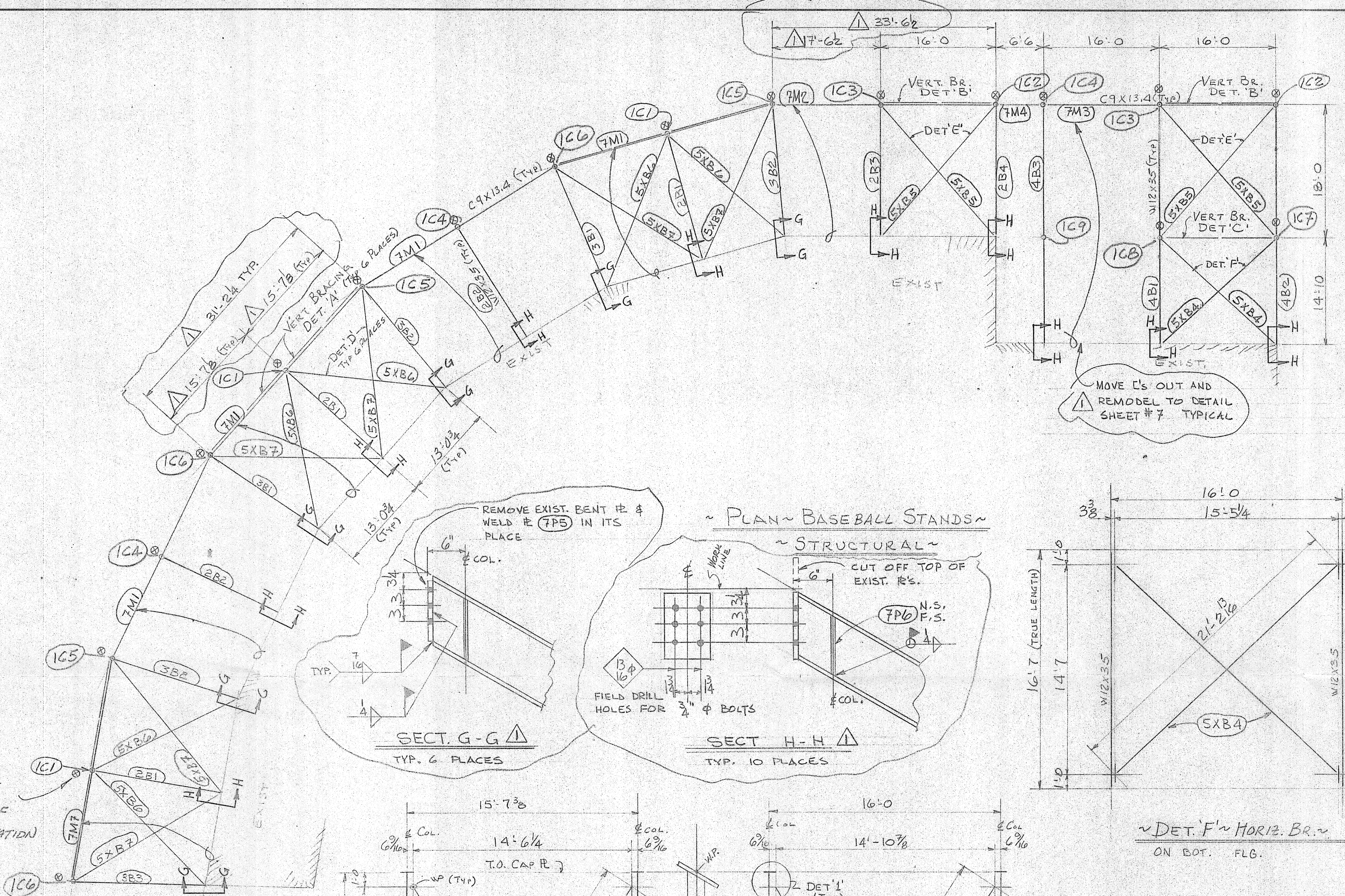
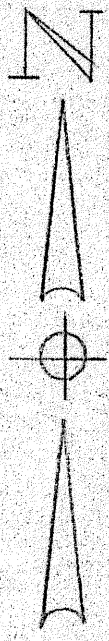
ANCHOR BOLT SETTING PLAN

DATE CHG. APPROVED BY  
 2-7-83 JPK

DRAWING NUMBER  
 E-1

ADDED SECT B-B & AB-3 2-14-83

TO APPROVAL 2-8-83



**FOR APPROVAL ONLY**

NOTES:  
 1. FIELD CONN. TO BE BOLTED USING 3/4" A307 U.N.O.  
 2. ALL COLS - 6" STD PIPE  
 3. BRACING ~ 3/4" BAR & TURNBUCKLE

**DOUGHTY STEEL & MACHINE**  
 Phone 303/874-7518  
 685 STATE HWY. 92 P.O. BOX 690  
 DELTA, COLORADO 81416 U.S.A.

STOKER STADIUM  
 BASEBALL STAND.

DATE: 2-21-83 APPROVED BY: [Signature] DRAWING NUMBER: E2

