



Purchasing Division

ADDENDUM NO. 3

DATE: March 2, 2021
FROM: City of Grand Junction Purchasing Division
TO: All Offerors
RE: Design/Build Canyon View Lighting Replacement Project RFP-4864-21-DH

Offerors responding to the above referenced solicitation are hereby instructed that the requirements have been clarified, modified, superseded and supplemented as to this date as hereinafter described.

Please make note of the following clarifications:

1. Q. Does Park & Recreation have an activity schedule?
 - A. Due to COVID-19, activities being scheduled are sporadic. As league and scheduling take place, we will contact the awarded contractor and work with them for project scheduling.
2. Q. Does the City have a specific bid bond form?
 - A. No, contractors may utilize any standard forms provided by their surety.
3. Q. When can we start?
 - A. Contractor may start upon notice to proceed once signed contract, payment & performance bonds, and insurance certificate are in place. As per solicitation document, the tentative contract signing date is April 22, 2021.
4. Q. When do we need to be finished?
 - A. Entire project (full design and construction) must be completed no later than December 13, 2021.
5. Q. Will we be able to close a field for trench work?
 - A. For any trench work that may be required, the City will work with the awarded contractor to coordinate trenching requirements necessary. Most trenches are outside the fields. The preference is to minimize any closures, if any are necessary.
6. Q. Can we bring our subs back out to this site?

A. Yes, contractors may revisit the site with their subs. Note that certain areas may be closed. No questions are to be asked to any City staff beside the senior buyer of the project. No formal second site visit will be offered.

7. Q. Where will the staging area be?

A. The City will provide an area for equipment storage. This will be coordinated with the City project manager and the awarded contractor.

8. When contractors develop their strategy and implementation plan for this project, please note that the month of July is considered a “rest period for the park” and no sporting events will be scheduled.

9. Q. Can the city please provide electrical drawings and/or as builds?

A. Please see the attached as-built drawings for bidding purposes. Actual/current conditions will need to be verified in the field prior to construction.

10. Q. Are there any problems with the current electrical?

A. There are no current problems and the City expects/desires to utilize as much of the existing electrical infrastructure (underground cabling) as possible but will be relying on contractors' recommendations if upgrades or replacements are needed.

11. Q. What needs to be done about the nest in the one light?

A. CPW has been contacted. At this time, we do not believe that there will be any special requirements for the bidders. Any protective measures/time restrictions will be communicated to the bidders/contractors as information is received.

12. Q. Is this RFP only for the field lighting?

A. Per the solicitation document, this RFP is for field lighting, infrastructure, and equipment for operation of new system.

13. Q. What is the City's tree protection guidelines?

A. Please see the following attached Grand Junction City Forester (GJCF) Tree Protection Specifications.

14. Q. For trenching and/or damaged grass agrees, what does the City want to use? Sod, seeding, or turf?

A. In the high traffic areas sod shall be utilized, in the low use areas seed shall be utilized.

15. Q. Can you provide additional information on cell tower on pole lighting lease agreements fir the following:

a. Can we add the new lighting to the pole? Who with Verizon would give us that approval?

A. A structural analysis will be required for any additional loading to the pole. If it passes, lighting can be added.

b. If the lighting cannot go back on the pole, what is the clearance needed for the new pole away from the cell tower?

- A. The answer to this is still being researched. It will be provided to the awarded Contractor.
- c. Do we work directly with Verizon or do we work with Front Range Wireless?
- A. Verizon's property management group.
- A. The City waiting to hear back from Verizon on this question. As soon as they provide a response, we will provide that information.
16. Q. Can the City confirm the thickness of the sidewalk that the equipment will be driving on?
- A. Typical Sidewalk is presumed to be 4 inches of non-reinforced concrete. The decorative/scored concrete around the core/center of the ball fields is presumed to be 5 inches of concrete with #4 rebar 18 inches on center – both ways. Each of these concrete thicknesses will need to be confirmed by the contractor prior to driving equipment on them.
17. Q. Can the City provide marking verification of all sprinkler heads and lines?
- A. Please see the attached as-builts. Additionally, we will mark out the irrigation mainline and do our best to mark laterals and irrigation heads.
18. Q. Can trenches remain open overnight?
- A. Per the City specifications, no open trenches are to remain overnight or when work is not being conducted. However, if the project requires some trenches to remain open for some time period, the contractor is responsible for coordinating and communicating with City project manager and providing safety measures necessary to maintain public and property safety.
19. Q. Major water line map
- A. Please see attached as-built drawings and please reference the City GIS mapping for assumed locations.
20. Q. Can the City provide location of storm drains?
- A. For storm drain locations, contractors may utilize the City's GIS system on the City's webpage at <https://www.gjcity.org/maps>.
21. Q. How much of the foundations does the City want removed when a pole is removed?
- A. Minimum of 2 feet below the existing surface elevations.
22. Q. Is it the contractors responsibly to dispose of the poles?
- A. Per the solicitation document, it is the contractor's responsibility to provide removal and disposal of all materials, products, etc. They City recommends that contractors reach out to local little leagues that have shown interest in reusing these items. Monument Little League showed some interest.
23. Q. What is the voltage on current lighting?
- A. The City believes this to be 480 volt. Please reference attached as-built drawings.

24. Q. What does the City want done with the spoils?

A. The City shall provide a site located near the project site.

25. Q. Do you want to maintain/keep the one switch light controls?

A. Yes, however the City is also interested in having phone app controls as well.

26. Q. Is there an active network?

A. There is currently no active wireless network at Canyon View Park.

27. Q. Does the City have an existing software?

A. The City of Grand Junction does not currently have any software running the sports field lighting at this time.

28. Q. How is the existing field lighting metered? Locations?

A. We believe all associate meters are in the Grand Shelter Electrical Room.

29. Q. Does the City want the contractor to provide a contingency fee line item when pricing this project?

A. This is a Guaranteed Maximum Price (GMP) proposal. It is at the Contractor's discretion if they include any contingency with their GMP.

30. Q. Can the City provide pole boxes for wiring?

A. No. The contractor shall be responsible for providing any pole boxes required for the project.

31. Q. Please confirm that IBC 2018, 115MPH is to be used for structural criteria per the City of Grand Junction and Mesa County building department?

A. The City will default to the Mesa County Building Department's criteria. It is the Contractor's responsibility to confirm with Mesa County Building Department.

32. Q. Must lighting manufacturers provide a minimum number of project references utilizing the same technology within the state of Colorado? 5 is a typical number for similar scope bids.

A. Contractor references do not need to be for the same technology, and do not have to be within the state of Colorado. Per Section 4.3, Successfully completed three (3) similar projects of scope and size within the last five (5) years.

33. Q. Must IDA Dark Skies compliance approval letter be submitted to the City as part of preproduction submittal?

A. No approval letter is required as part of the preproduction submittal. However, as per the solicitation documents, Contractor must obtain IDA Dark Skies certification for the project upon completion.

34. Q. Is IDA Dark Skies on site audit required post lighting installation? This will provide the City true accreditation. Will both the manufacturer and installing contractor be responsible to make any necessary changes at their own cost should the facility fail on site audit?

A. Contractor shall meet all IDA Dark Skies requirements necessary for the City to obtain proper accreditation. If IDA Dark Skies require modification/correction to the project in order for the City to receive proper accreditation, all modifications/corrections shall be at the expense of the Contractor.

35. Q. Light levels listed in Addendum 2 do not meet industry recommended standards for recreation sporting facilities. Confirm that the lighting requirements are 50/30FC for softball and 30FC for soccer per IESNA recommendations for recreational sports lighting. These will meet requirements for hosting tournaments.

A. Light levels for both softball and soccer fields shall meet the IESNA recommendations for recreational sports lighting.

36. Q. Will direct buried steel poles be allowed? These face similar corrosion issues associated with the existing structures that have failed. Must all proposed poles utilize either anchor bolt foundations or pre-cast foundations that remove all steel components of the pole from being below grade in a corrosive environment?

A. The City would prefer a non-corrosive system however the City will consider other options.

37. Q. Must communication costs associated with any controls system be included for the entire length of manufacturer's warranty period per industry standard?

A. Reference question and answer #5 of Addendum 2.

38. Q. Will integrated drivers be allowed or must all fixtures provide remote drivers at 10' above grade for easy access for maintenance. This would replicate the current set up with remoted ballast for easy access.

A. 10' above grade shall be the maximum height for remote drivers. Integrated drivers shall not be allowed.

39. Q. Must manufacturers provide on-site testing and training once system is installed? If testing reveals that promised light levels are not being met must contractors and manufacturers make appropriate repairs/replacements at own cost to meet submitted performance?

A. Yes, manufacture must provide on-site testing and training upon project completion. If testing reveals proper lighting levels are not being met, the Contractor shall be responsible for modifications/corrections to bring lighting levels to IESNA and IDA Dark Skies requirements.

40. Q. Must all poles be hot dipped galvanized? This galvanizes the pole inside and out eliminating the previous lighting systems corrosion issues. Spray on galvanization usually will not coat every exposed surface of steel, inside and out.

A. The City prefers a non-corrosive system, but will consider other options.

41. Q. Permit(s) are to be issued through which municipality?

A. Any permit(s) required for the project should be obtained through the Mesa County Building Department.

42. Q. Other than the electrical portion of permitting, what other permits will be required?

A. It is the Contractor's responsibility to verify what permits may be required for the project.

43. Q. Page 25 of the Request for Proposal package states we are to furnish "audited" financial statements. Is this corrected that they must be "audited"?

A. Contractor may furnish "reviewed" or "audited" financial statements for this project.

44. Q. Are there any specific potholing requirements?

A. The Contractor is responsible for researching and following any federal, state, and county rules and regulations pertaining to this. Refer to the City's Standard Contract Documents.

The original solicitation for the project noted above is amended as noted.

All other conditions of subject remain the same.

Respectfully,

A handwritten signature in black ink, appearing to read "Duane Hoff Jr.", written in a cursive style.

Duane Hoff Jr., Senior Buyer
City of Grand Junction, Colorado

VINSTON ASSOCIA
 PLANNING AND LANDSCAPE ARCHITECTS
 1320 PEARL STREET
 BOULDER, COLORADO
 PHONE: (303) 440-0200 FAX: (303) 440-0201

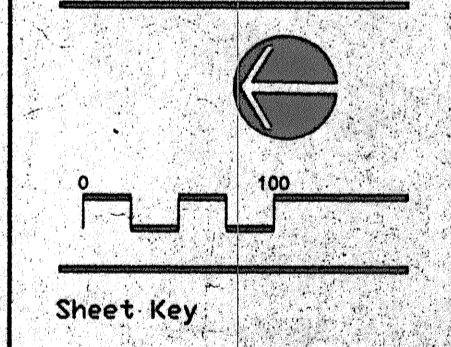
Copyright 1995 ALL RIGHTS RESERVED. NO WRITTEN INFORMATION APPEAR HEREON SHALL BE REPRODUCED, COPIED, EITHER WHOLLY OR PARTIALLY, WITHOUT THE WRITTEN CONSENT OF VINSTON ASSOCIATES.

Issue Record/Revision

Issue No.	Revision	Date

PHASE 1
CANYON VIEW PARK
CITY OF GRAND JUNCTION, COLORADO

CLAVONNE & ASSOCIATES
 LANDSCAPE ARCHITECTS
 844 GRAND AVENUE
 GRAND JUNCTION, CO
 PHONE (970) 241-0746 FAX (970) 241-0747



Sheet Title

AS-BUILT

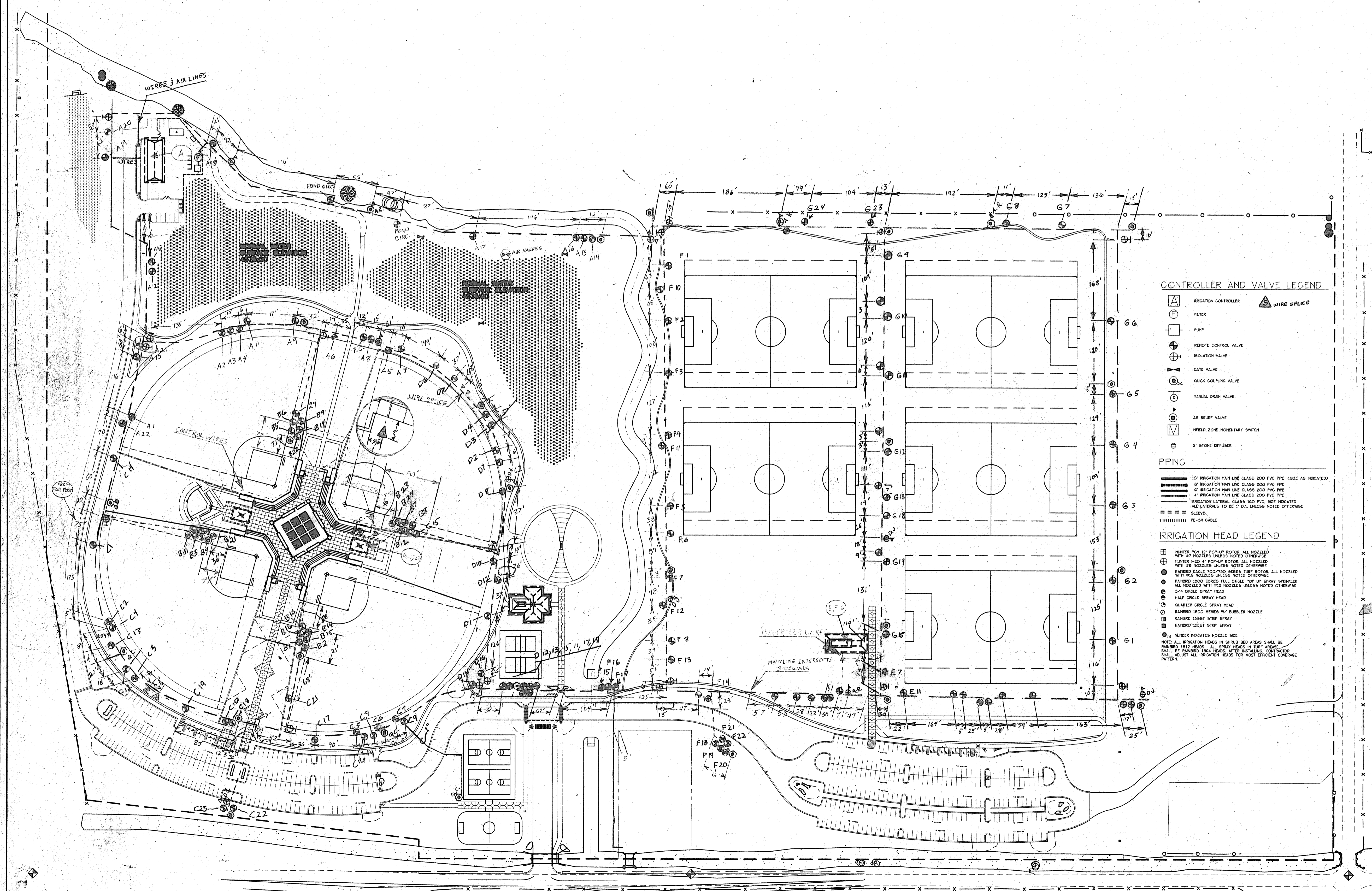
Date: _____

Drawn By: _____

Checked By: _____

Project Number: **7240**

Sheet Number: _____



CONTROLLER AND VALVE LEGEND

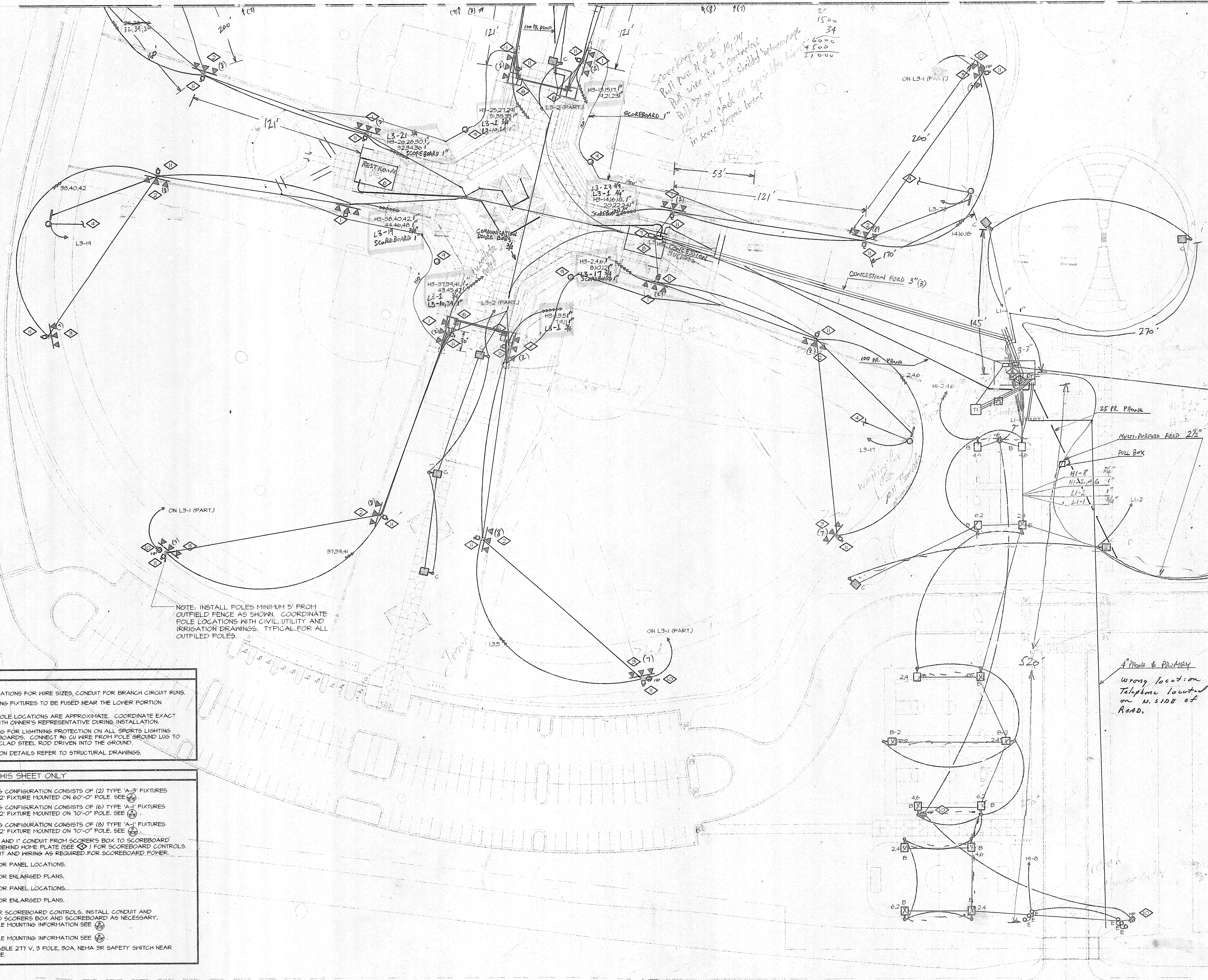
- IRRIGATION CONTROLLER
- FILTER
- PUMP
- REMOTE CONTROL VALVE
- ISOLATION VALVE
- GATE VALVE
- QUICK COUPLING VALVE
- MANUAL DRAIN VALVE
- AIR RELIEF VALVE
- FIELD ZONE MOMENTARY SWITCH
- 6" STONE DIFFUSER
- WIRE SPLICE

PIPING

- 10" IRRIGATION MAN LINE CLASS 200 PVC PIPE (SIZE AS INDICATED)
- 8" IRRIGATION MAN LINE CLASS 200 PVC PIPE
- 6" IRRIGATION MAN LINE CLASS 200 PVC PIPE
- 4" IRRIGATION MAN LINE CLASS 200 PVC PIPE
- IRRIGATION LATERAL CLASS 160 PVC PIPE (SIZE INDICATED)
- ALL LATERALS 10" OR 12" DIA. UNLESS NOTED OTHERWISE
- SLEEVE
- PE-34 CABLE

IRRIGATION HEAD LEGEND

- HUNTER POP 12" POP-UP ROTOR, ALL NOZZLED WITH 90° NOZZLES UNLESS NOTED OTHERWISE
 - HUNTER 12" A" POP-UP ROTOR, ALL NOZZLED WITH 90° NOZZLES UNLESS NOTED OTHERWISE
 - RANGER 1000 SERIES FULL CIRCLE POP UP SPRAY SPRINKLER ALL NOZZLED WITH 90° NOZZLES UNLESS NOTED OTHERWISE
 - 3/4" CIRCLE SPRAY HEAD
 - HALF CIRCLE SPRAY HEAD
 - QUARTER CIRCLE SPRAY HEAD
 - RANGER 1000 SERIES BY BARBERK NOZZLE
 - RANGER 1055T STRIP SPRAY
 - RANGER 1055T STRIP SPRAY
 - RANGER 1055T STRIP SPRAY
 - RANGER 1055T STRIP SPRAY
- Note: All irrigation heads in shrub bed areas shall be RANGER 1012 HEADS. ALL SPRAY HEADS IN TURF AREAS SHALL BE RANGER 1000 HEADS. AFTER INSTALLATION CONTRACTOR SHALL ADJUST ALL IRRIGATION HEADS FOR MOST EFFICIENT COVERAGE PATTERN.*



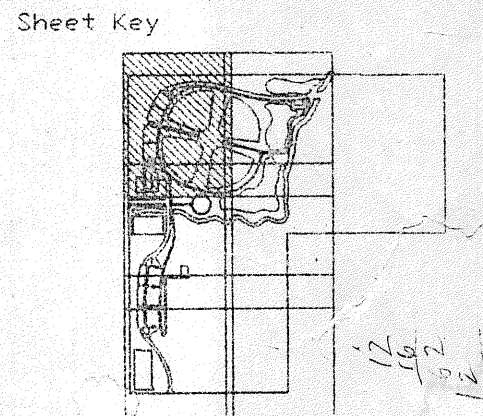
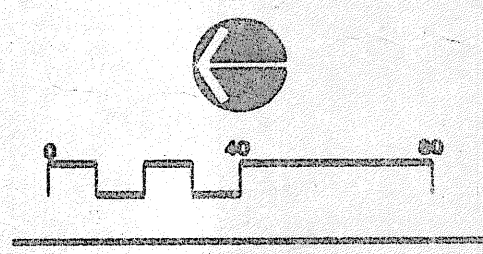
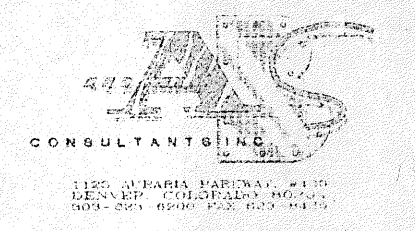
- GENERAL NOTES**
1. REFER TO SPECIFICATIONS FOR WIRE SIZES, CONDUIT FOR BRANCH CIRCUIT RUNS.
 2. ALL SPORTS LIGHTING FIXTURES TO BE FUSED NEAR THE LOWER PORTION OF POLES.
 3. SPORTS LIGHTING POLE LOCATIONS ARE APPROXIMATE. COORDINATE EXACT POLE LOCATIONS WITH OWNER'S REPRESENTATIVE DURING INSTALLATION.
 4. PROVIDE GROUNDING FOR LIGHTING PROTECTION ON ALL SPORTS LIGHTING POLES AND SCOREBOARDS. CONNECT #6 CU WIRE FROM POLE GROUND LUG TO 3/4" X 10' COPPER GLAND STEEL ROD DRIVEN INTO THE GROUND.
 5. FOR ALL FOUNDATION DETAILS REFER TO STRUCTURAL DRAWINGS.

- DETAIL NOTES: THIS SHEET ONLY**
- ◇ SPORTS LIGHTING CONFIGURATION CONSISTS OF (2) TYPE 'A-3' FIXTURES AND (1) TYPE 'A-2' FIXTURE MOUNTED ON 60'-0" POLE. SEE (A)
 - ◇ SPORTS LIGHTING CONFIGURATION CONSISTS OF (6) TYPE 'A-1' FIXTURES AND (1) TYPE 'A-2' FIXTURE MOUNTED ON 70'-0" POLE. SEE (B)
 - ◇ SPORTS LIGHTING CONFIGURATION CONSISTS OF (8) TYPE 'A-1' FIXTURES AND (1) TYPE 'A-2' FIXTURE MOUNTED ON 70'-0" POLE. SEE (C)
 - ◇ PROVIDE J-BOX AND 1" CONDUIT FROM SCORER'S BOX TO SCOREBOARD AND LOCATION BEHIND HOME PLATE (SEE (D)) FOR SCOREBOARD CONTROLS. PROVIDE CONDUIT AND WIRING AS REQUIRED FOR SCOREBOARD POWER.
 - ◇ SEE SHEET E3 FOR PANEL LOCATIONS.
 - ◇ SEE SHEET E3 FOR ENLARGED PLANS.
 - ◇ SEE SHEET E4 FOR PANEL LOCATIONS.
 - ◇ SEE SHEET E4 FOR ENLARGED PLANS.
 - ◇ CONNECTION FOR SCOREBOARD CONTROLS. INSTALL CONDUIT AND CONNECTIONS TO SCORERS BOX AND SCOREBOARD AS NECESSARY. FOR RECEPTACLE MOUNTING INFORMATION SEE (E)
 - ◇ FOR RECEPTACLE MOUNTING INFORMATION SEE (E)
 - ◇ PROVIDE LOCKABLE 277 V, 3 POLE, 30A, NEMA 3R SAFETY SWITCH NEAR BOTTOM OF POLE.

WINST
PLANNING
WINST
1320
BOULD
PHONE: (303) 440-1111

Issue Recor
Purpose

PHASE 1
CANYON VIEW PARK
CITY OF GRAND JUNCTION, COLORADO



Sheet Title
LIGHTING AND POWER PLAN
CONSTRUCTION DOCUMENT SET
Date: 12-22-95
Drawn By: CLF
Checked By: LEY
Project Number: 72401
Sheet Number: E2-1

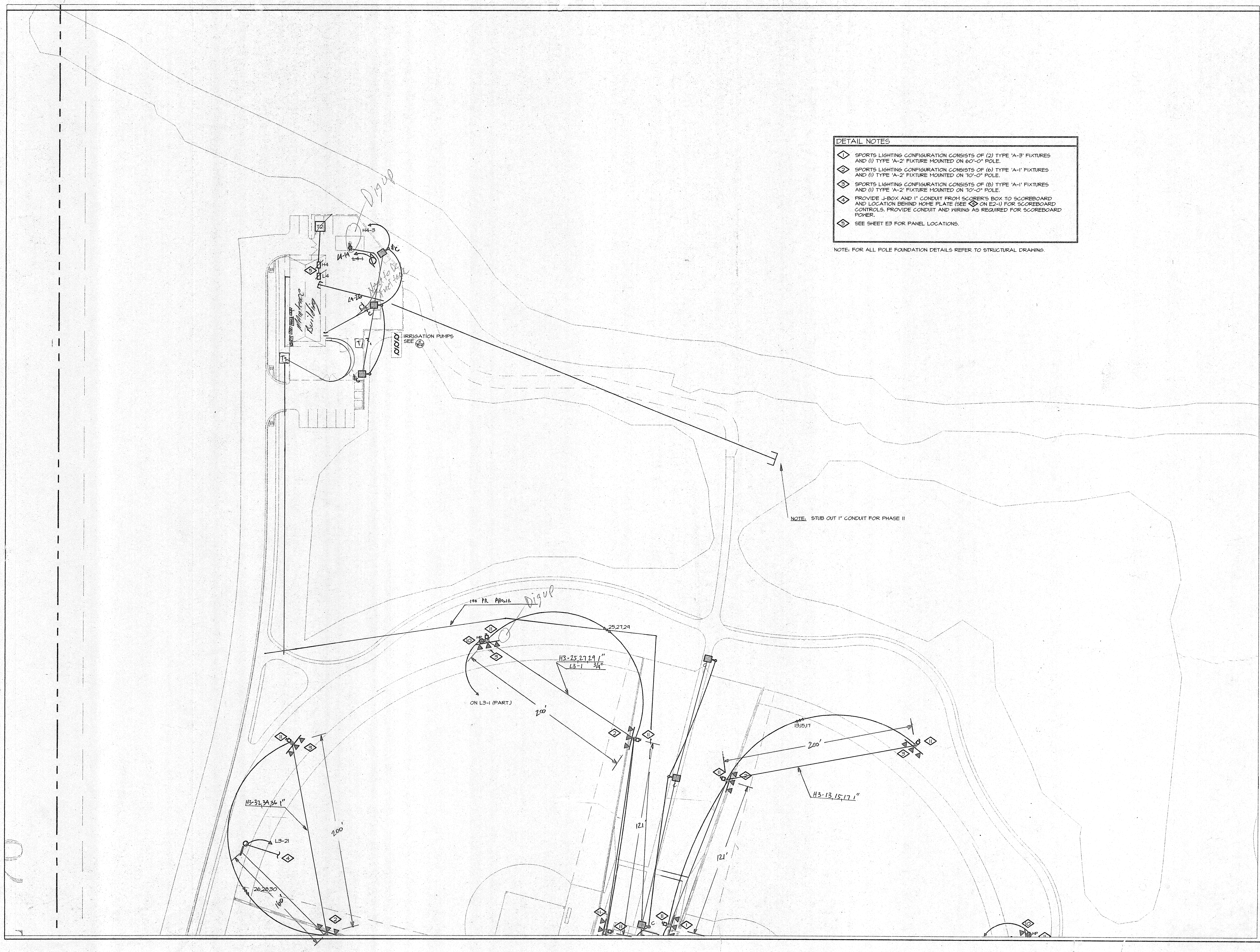
Issue Record/Revision

Purpose	Date

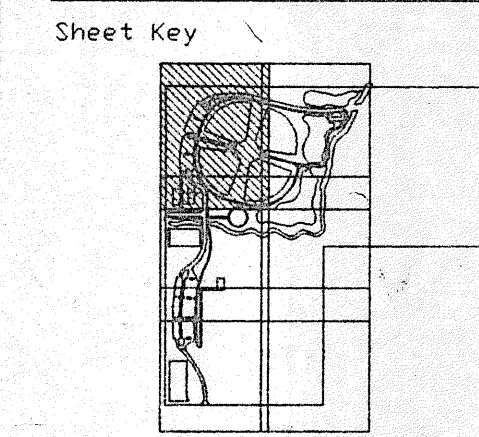
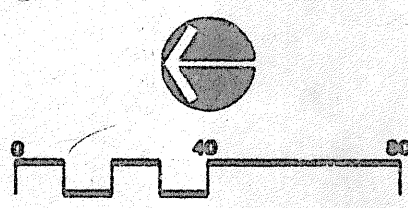
DETAIL NOTES

- 1 SPORTS LIGHTING CONFIGURATION CONSISTS OF (2) TYPE 'A-3' FIXTURES AND (1) TYPE 'A-2' FIXTURE MOUNTED ON 6'-0" POLE.
- 2 SPORTS LIGHTING CONFIGURATION CONSISTS OF (6) TYPE 'A-1' FIXTURES AND (1) TYPE 'A-2' FIXTURE MOUNTED ON 10'-0" POLE.
- 3 SPORTS LIGHTING CONFIGURATION CONSISTS OF (8) TYPE 'A-1' FIXTURES AND (1) TYPE 'A-2' FIXTURE MOUNTED ON 10'-0" POLE.
- 4 PROVIDE J-BOX AND 1" CONDUIT FROM SCORER'S BOX TO SCOREBOARD AND LOCATION BEHIND HOME PLATE (SEE 5 ON E2-1) FOR SCOREBOARD CONTROLS. PROVIDE CONDUIT AND WIRING AS REQUIRED FOR SCOREBOARD POWER.
- 5 SEE SHEET E3 FOR PANEL LOCATIONS.

NOTE: FOR ALL POLE FOUNDATION DETAILS REFER TO STRUCTURAL DRAWINGS.



PHASE 1
CANYON VIEW PARK
CITY OF GRAND JUNCTION, COLORADO



Sheet Title

LIGHTING AND POWER PLAN
CONSTRUCTION DOCUMENT SET

Date: 12-22-95

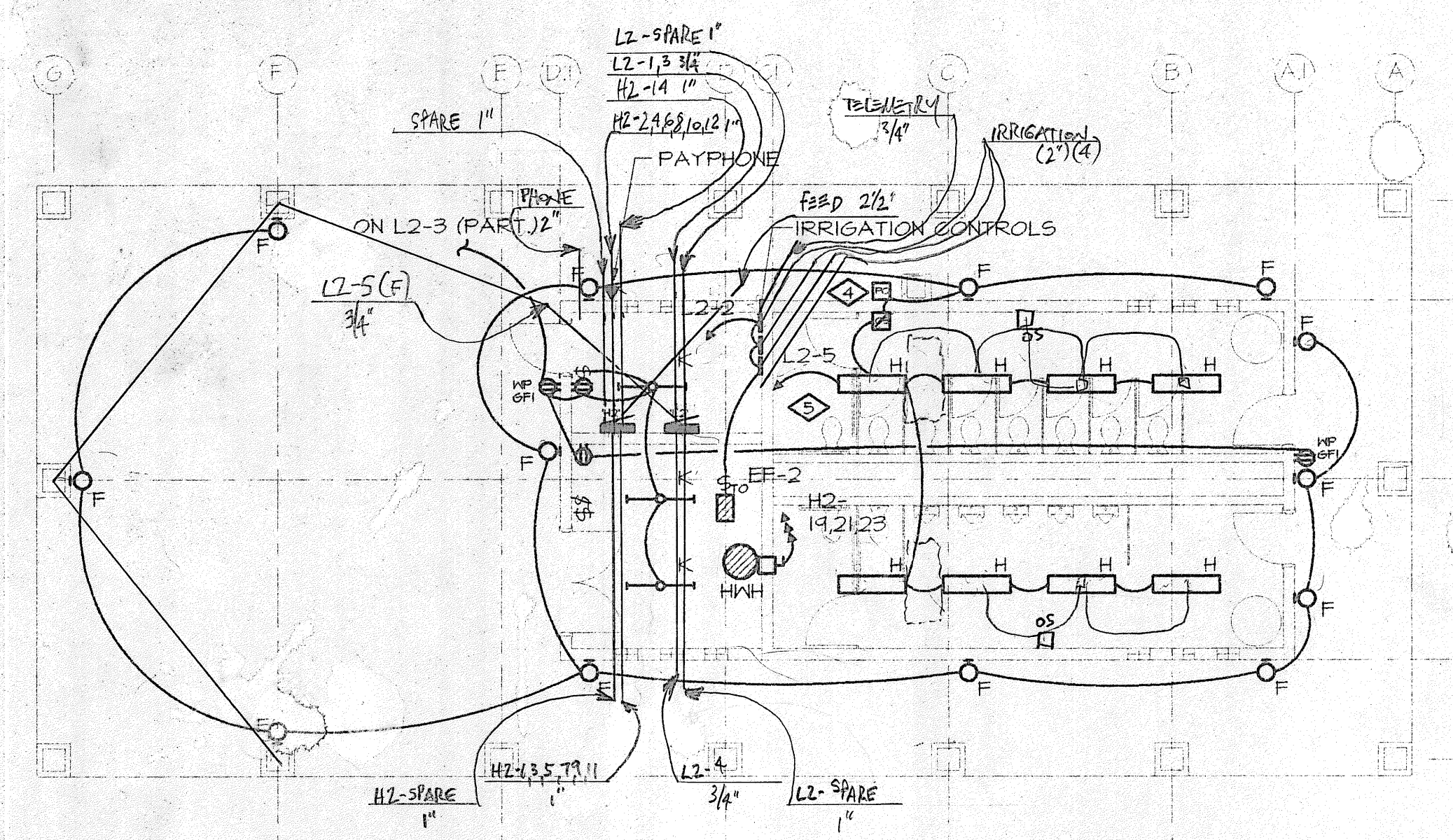
Drawn By: CLF

Checked By: LEY

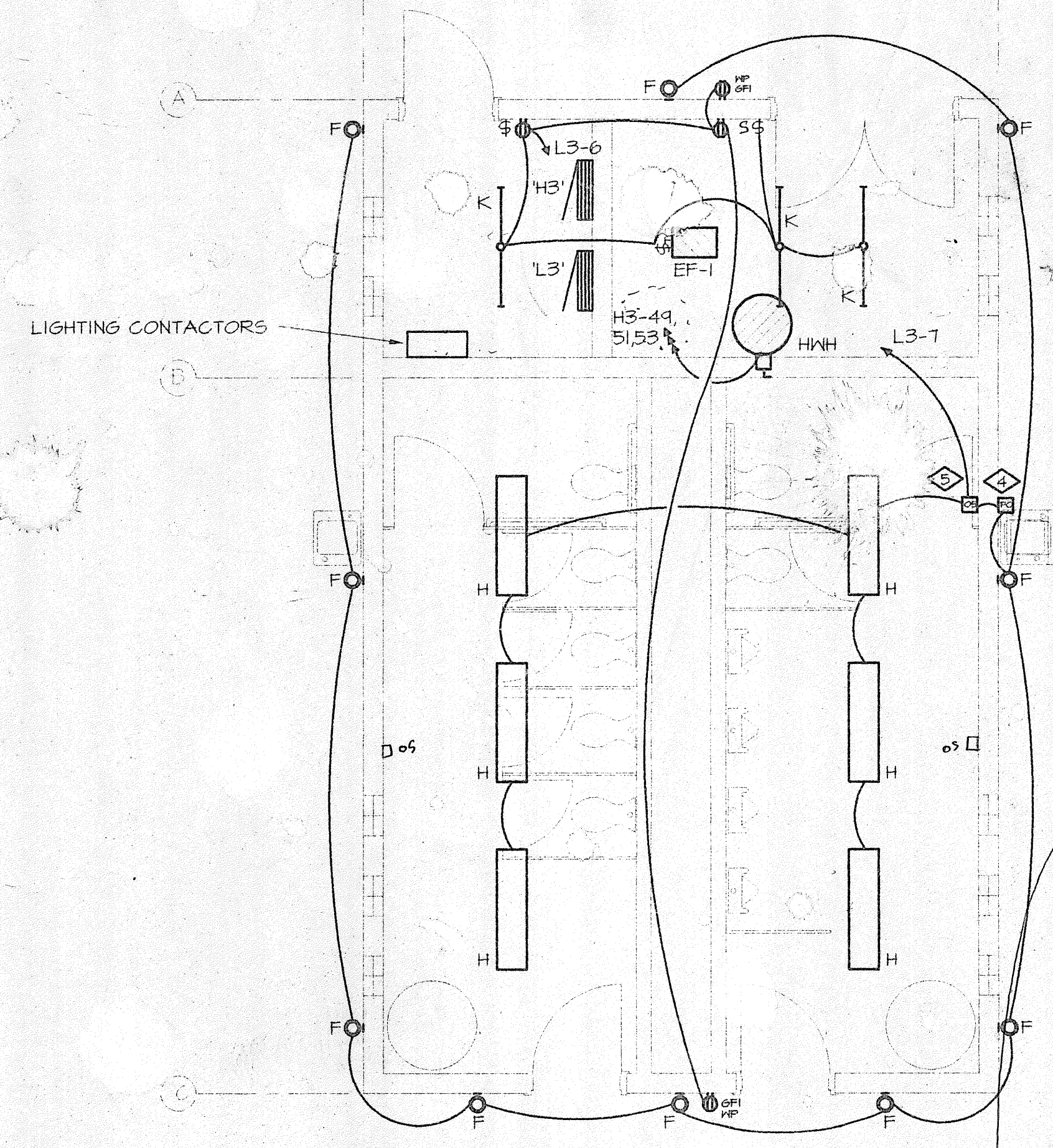
Project Number 72401

Sheet Number **E2-2**

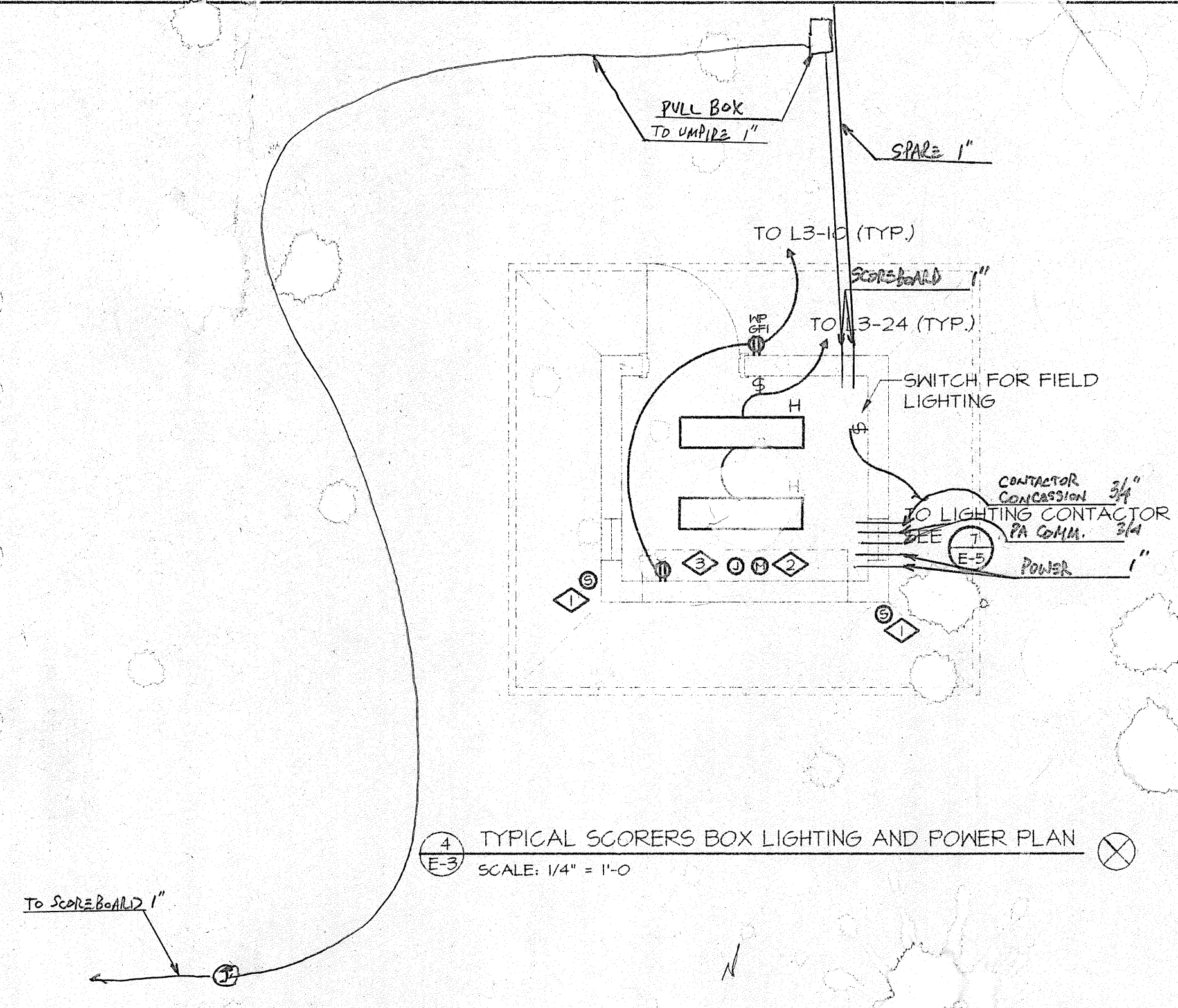
"F" FIXTURES - 9'6"



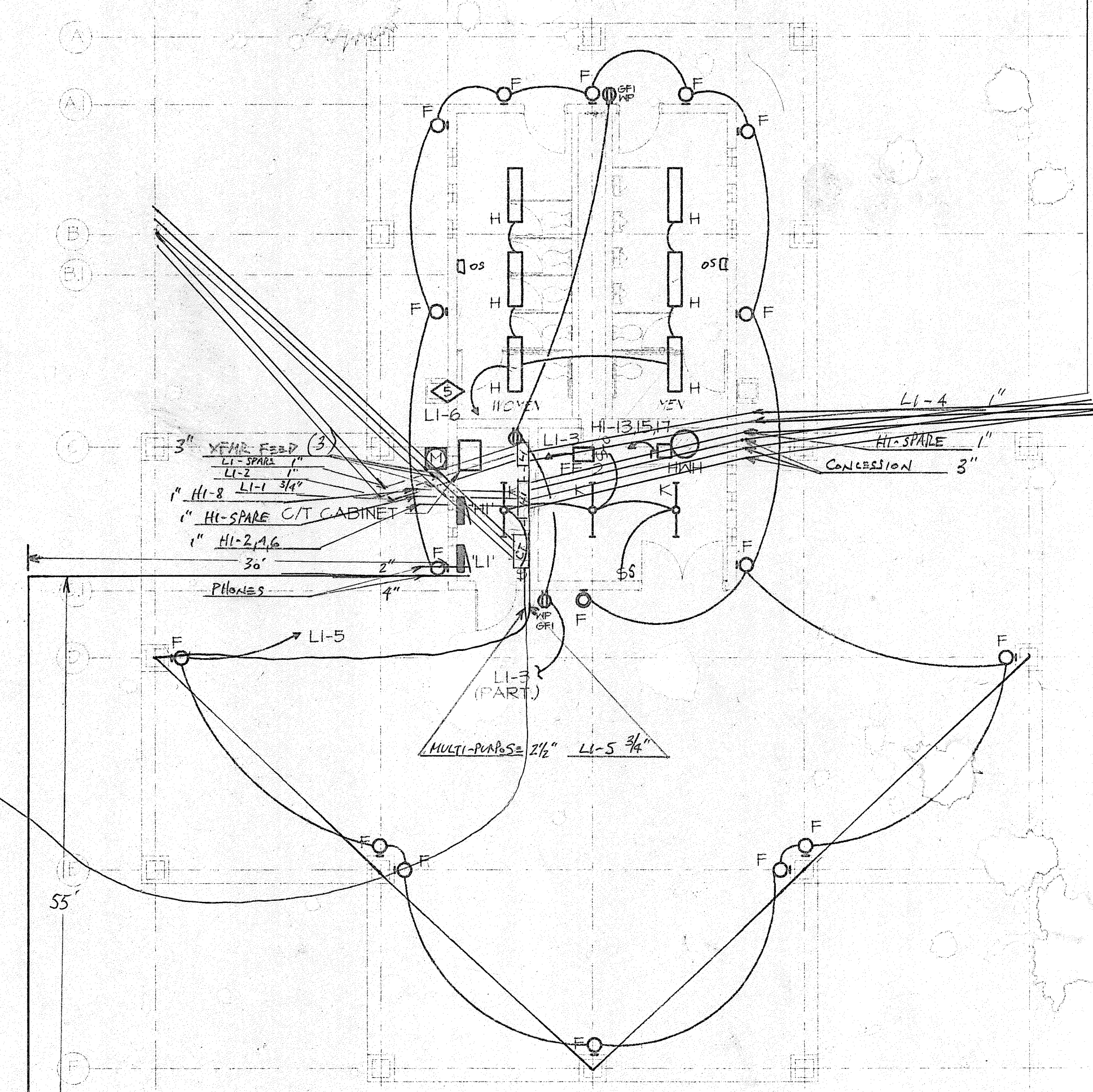
3 MULTIPURPOSE FIELDS SHELTER LIGHTING AND POWER PLAN
SCALE: 1/8" = 1'-0"



2 RESTROOM LIGHTING AND POWER PLAN
SCALE: 1/4" = 1'-0"



4 TYPICAL SCORERS BOX LIGHTING AND POWER PLAN
SCALE: 1/4" = 1'-0"



1 GROUP SHELTER LIGHTING AND POWER PLAN
SCALE: 1/8" = 1'-0"

GENERAL NOTES

- COORDINATE ELECTRICAL EQUIPMENT LOCATIONS WITH MECHANICAL DRAWINGS PRIOR TO INSTALLATION.
- REFER TO MECHANICAL DRAWINGS FOR MECHANICAL INSTALLATIONS.

DETAIL NOTES

- SPEAKER FOR PUBLIC ADDRESS SYSTEM FOR INFORMATION ON PUBLIC ADDRESS SYSTEM REFER TO DETAIL E-5
- MICROPHONE FOR PUBLIC ADDRESS SYSTEM FOR INFORMATION ON PUBLIC ADDRESS SYSTEM REFER TO DETAIL E-5
- J-BOX FOR SCOREBOARD CONTROLS. FOR INFORMATION ON SCOREBOARD CONTACT SCOREBOARD MANUFACTURER
- TYPE 'F' FIXTURES TO BE CONTROLLED BY PHOTOCELL.
- TYPE 'H' FIXTURES TO BE CONTROLLED BY OCCUPANCY SENSORS.

DATE: 12-22-05
DRAWN BY: CLF
CHECKED BY: LEY
PROJECT NUMBER: 72401
SHEET NUMBER: E-3

PHASE 1
CANYON VIEW PARK
CITY OF GRAND JUNCTION, COLORADO

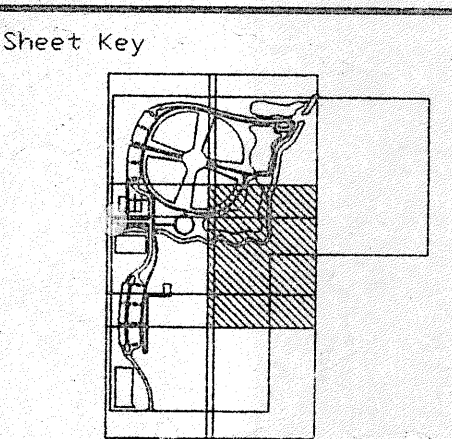
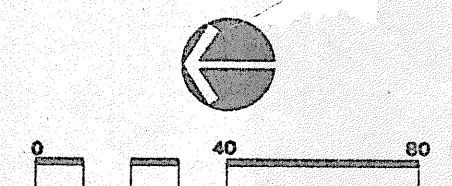
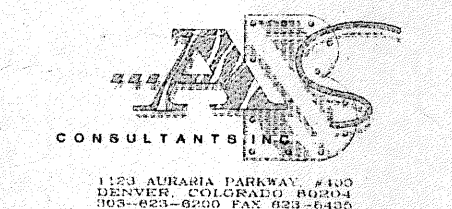


Sheet Title
ENLARGED ELECTRICAL PLANS
CONSTRUCTION DOCUMENT SET
Date: 12-22-05
Drawn By: CLF
Checked By: LEY
Project Number: 72401
Sheet Number: E-3

Issue Record/Revision

Purpose	Date

PHASE 1
CANYON VIEW PARK
CITY OF GRAND JUNCTION, COLORADO



Sheet Title

LIGHTING AND POWER PLAN

CONSTRUCTION DOCUMENT SET

Date: 12-22-95

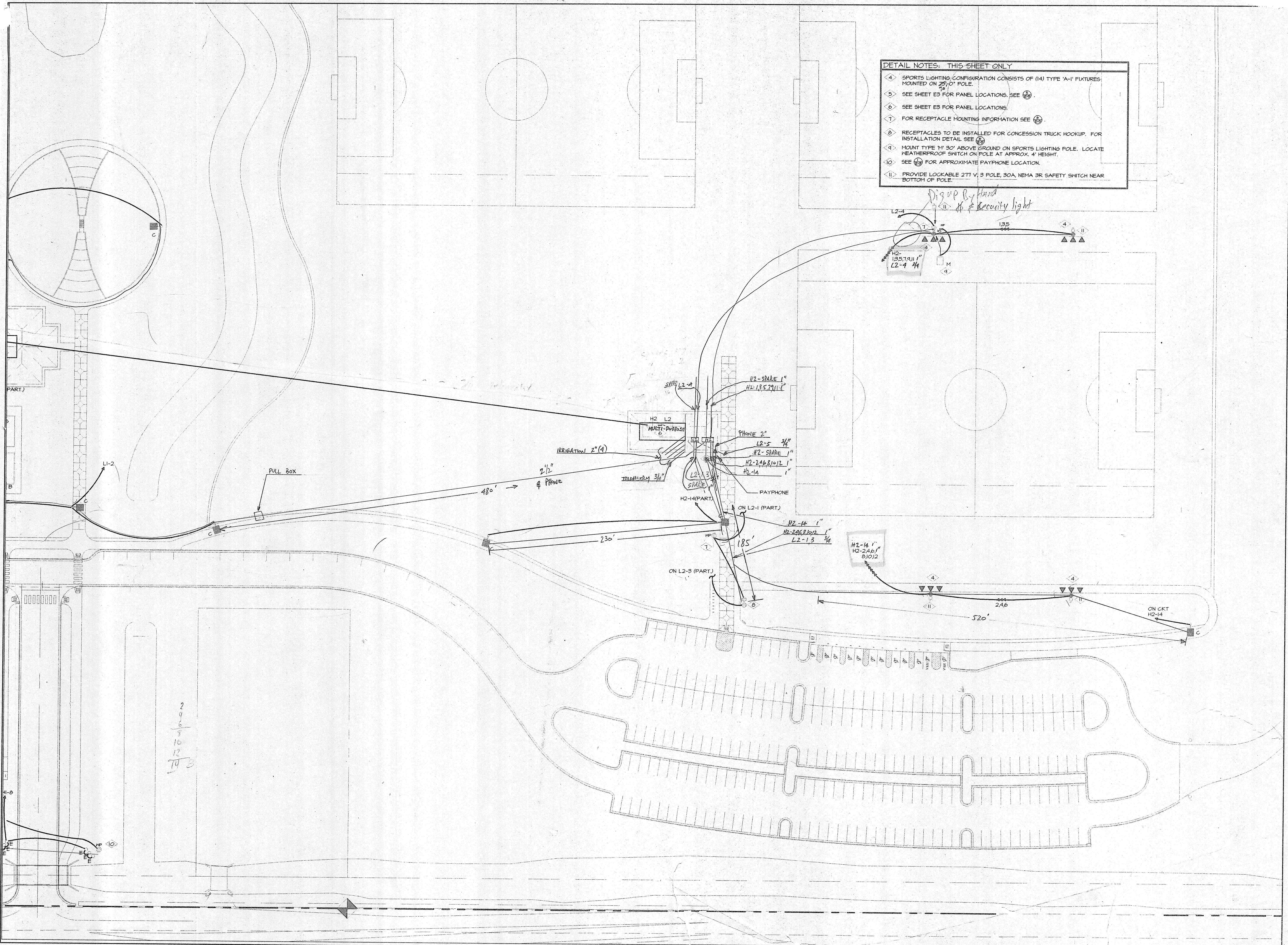
Drawn By: CLF

Checked By: LEY

Project Number: 72401

Sheet Number: E2-4

- DETAIL NOTES: THIS SHEET ONLY
- ④ SPORTS LIGHTING CONFIGURATION CONSISTS OF (14) TYPE 'A-1' FIXTURES MOUNTED ON 25'-0" POLE.
 - ⑤ SEE SHEET E3 FOR PANEL LOCATIONS. SEE Ⓞ.
 - ⑥ SEE SHEET E3 FOR PANEL LOCATIONS.
 - ⑦ FOR RECEPTACLE MOUNTING INFORMATION SEE Ⓞ.
 - ⑧ RECEPTACLES TO BE INSTALLED FOR CONCESSION TRUCK HOOKUP. FOR INSTALLATION DETAIL SEE Ⓞ.
 - ⑨ MOUNT TYPE 'M' 30' ABOVE GROUND ON SPORTS LIGHTING POLE. LOCATE WEATHERPROOF SWITCH ON POLE AT APPROX. 4' HEIGHT.
 - ⑩ SEE Ⓞ FOR APPROXIMATE PAYPHONE LOCATION.
 - ⑪ PROVIDE LOCKABLE 277 V, 3 POLE, 30A, NEMA 3R SAFETY SWITCH NEAR BOTTOM OF POLE.



GENERAL NOTES

COORDINATE ELECTRICAL EQUIPMENT CONNECTIONS WITH MECHANICAL DRAWINGS PRIOR TO INSTALLATION.

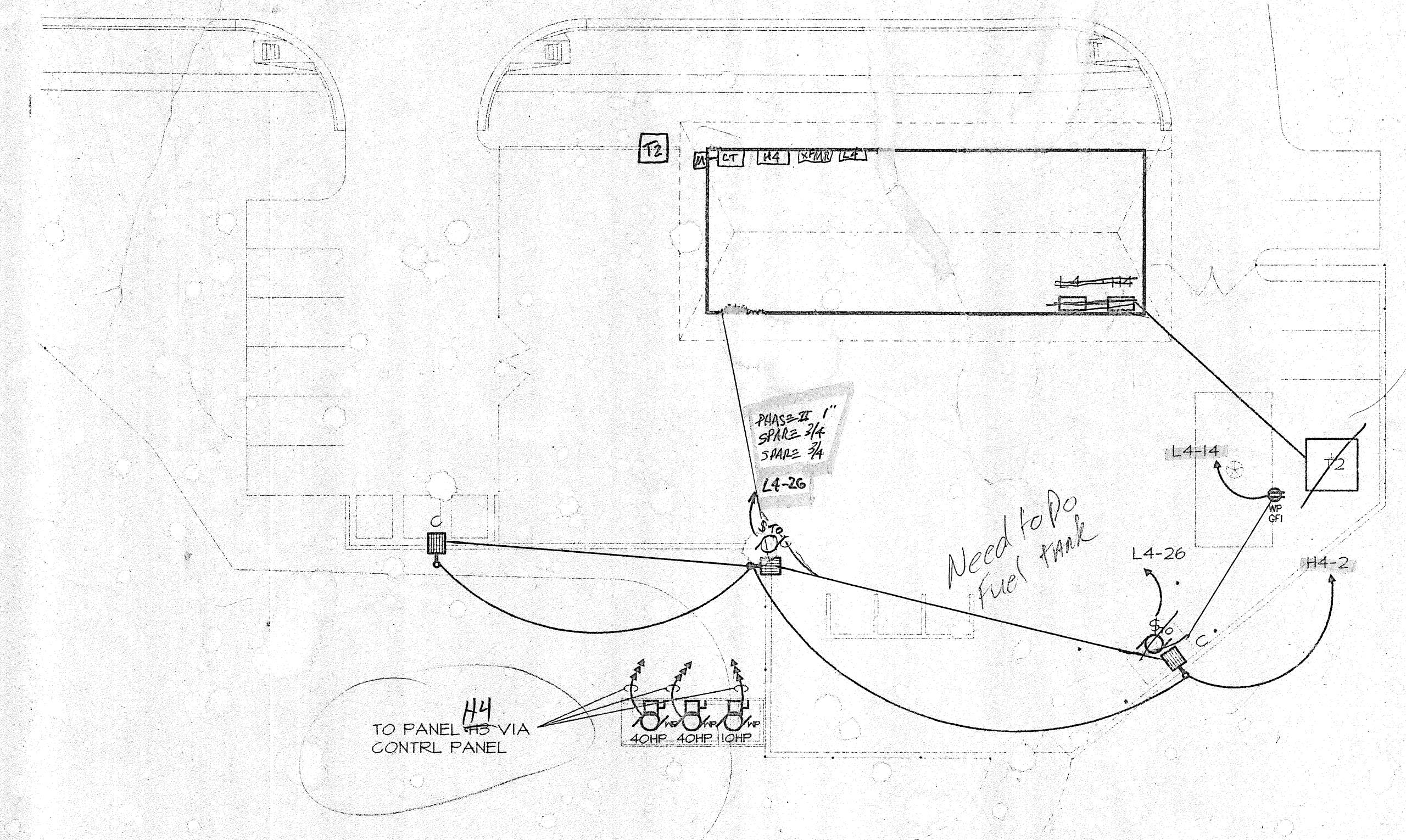
WINSTON ASSOCIATES, INC.
 20 PEARL STREET, SUITE 200
 BOULDER, COLORADO 80501
 PHONE: (303) 440-1000 FAX: (303) 440-1001

DETAIL NOTES

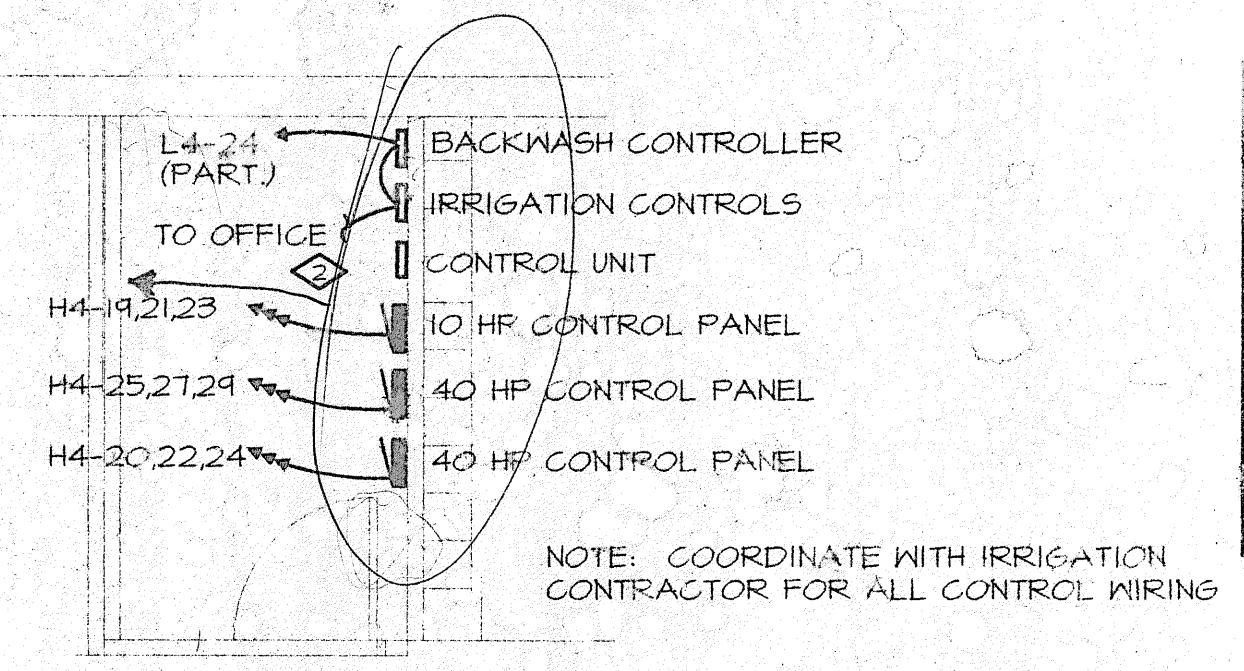
- PROVIDE BOXES AND RECEPTACLES AS SHOWN FOR FUTURE VENDORS.
- CONNECTIONS FOR CLUSTER CONTROL UNIT. REFER TO IRRIGATION DRAWINGS FOR EQUIPMENT REQUIREMENTS/LOCATIONS.
- TYPE 'F' FIXTURES TO BE CONTROLLED BY PHOTOCELL.

Issue Record/Revision

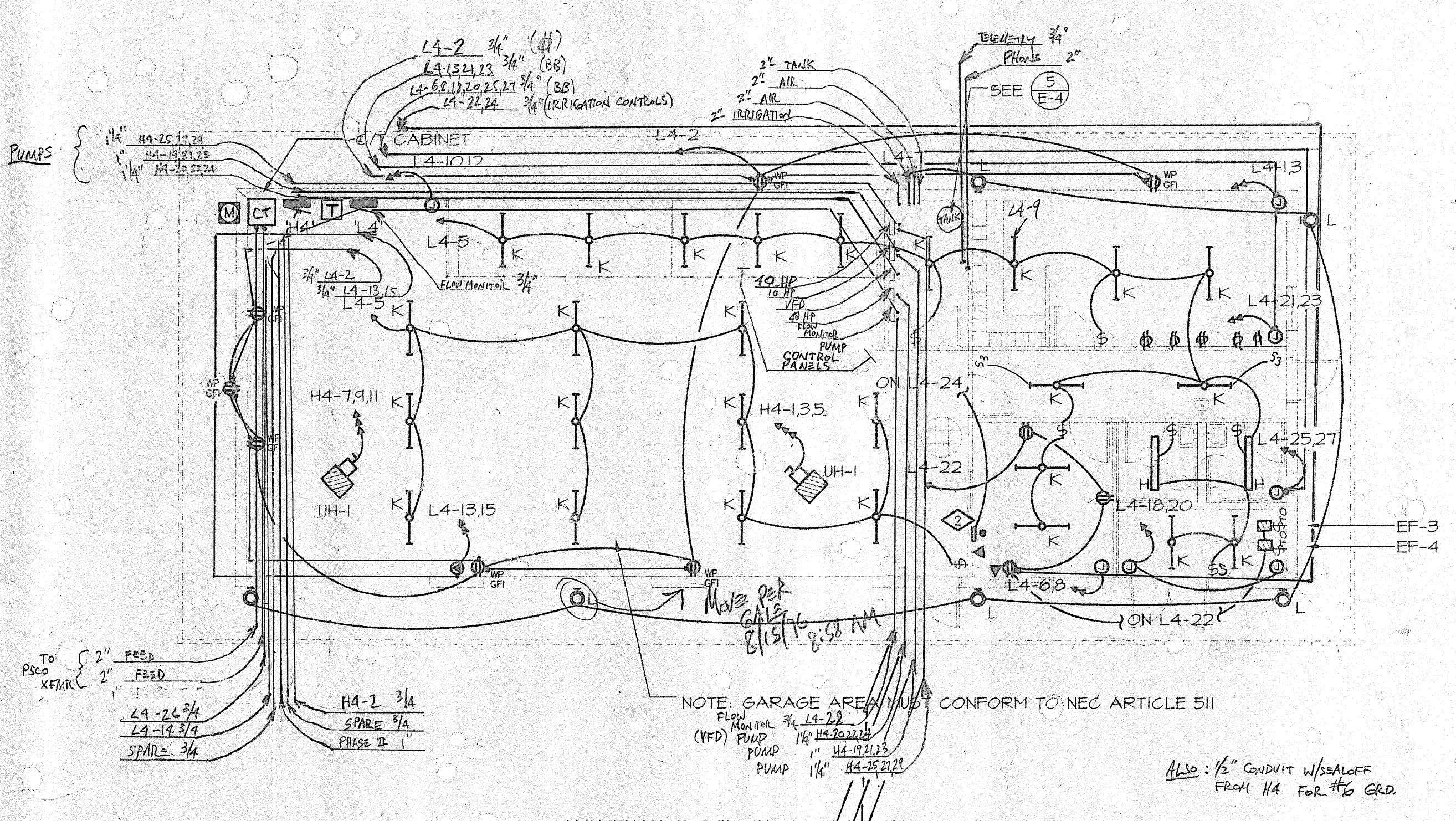
Issue	Record/Revision	Date



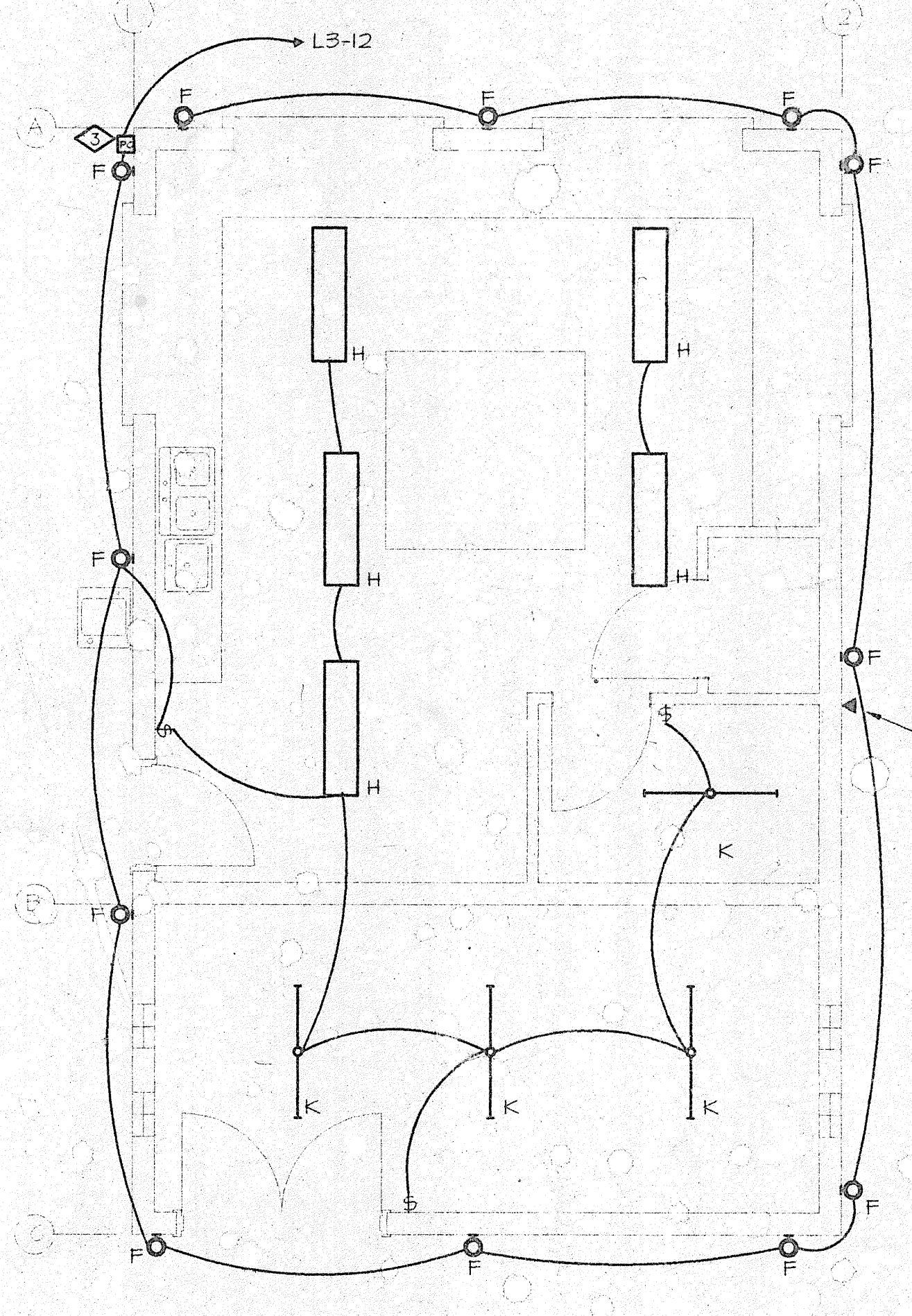
5 ENLARGED EQUIPMENT ROOM PLAN
 SCALE: 1/8" = 1'-0"



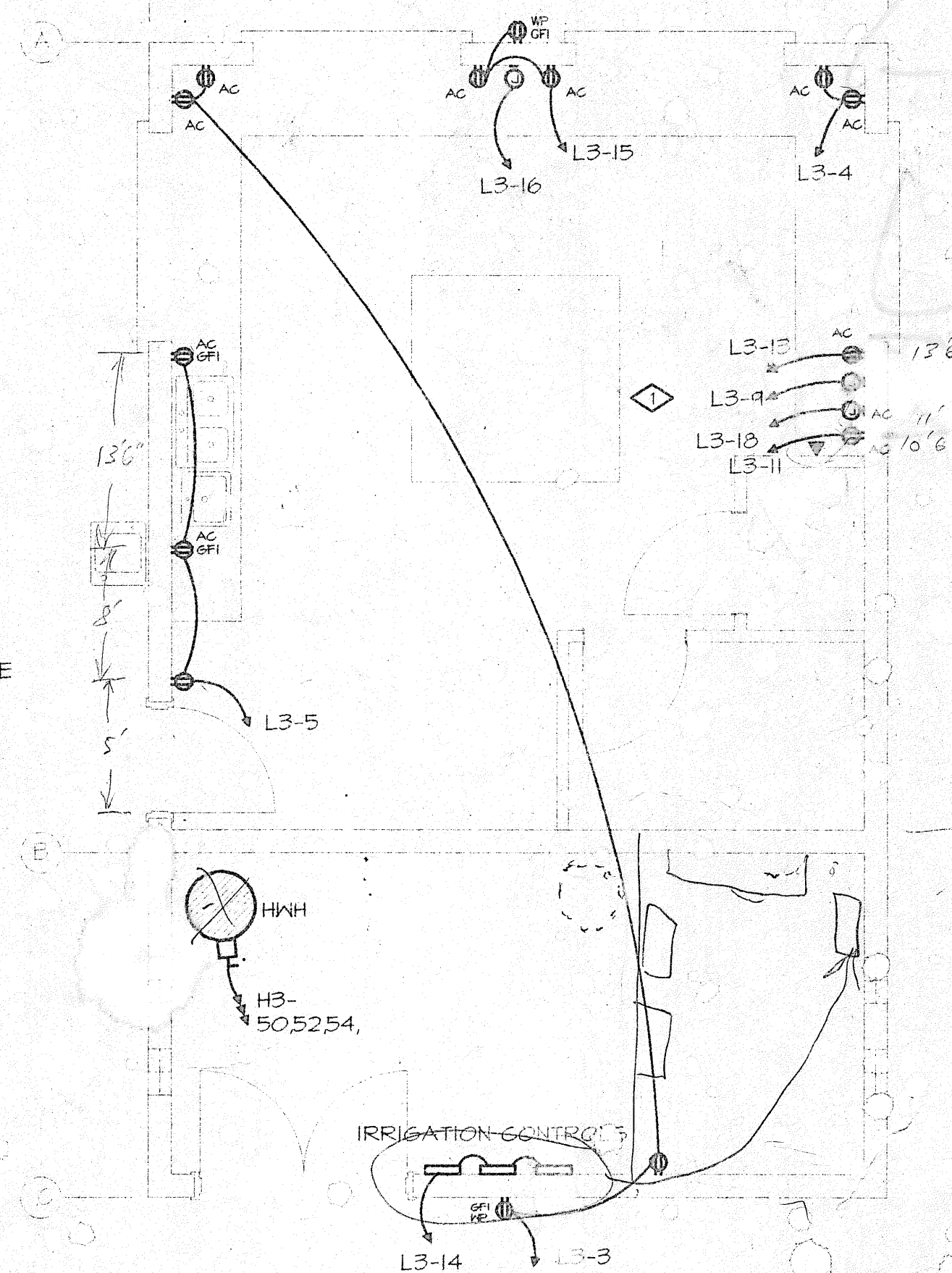
4 MAINTENANCE AREA SITE PLAN
 SCALE: 1/16" = 1'-0"



3 MAINTENANCE BUILDING LIGHTING AND POWER PLAN
 SCALE: 1/8" = 1'-0"

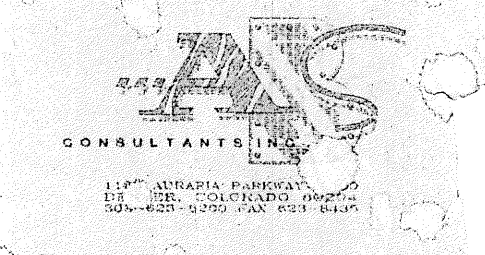


2 CONCESSIONS LIGHTING PLAN
 SCALE: 1/4" = 1'-0"



1 CONCESSIONS POWER PLAN
 SCALE: 1/4" = 1'-0"

PHASE 1
CANYON VIEW PARK
 CITY OF GRAND JUNCTION, COLORADO



Sheet Title
 ENLARGED ELEC. PLAN
 CONSTRUCTION LOC.
 Date:
 Drawn By:
 Check:
 Project:
 Sheet:

Issue Record/Revision

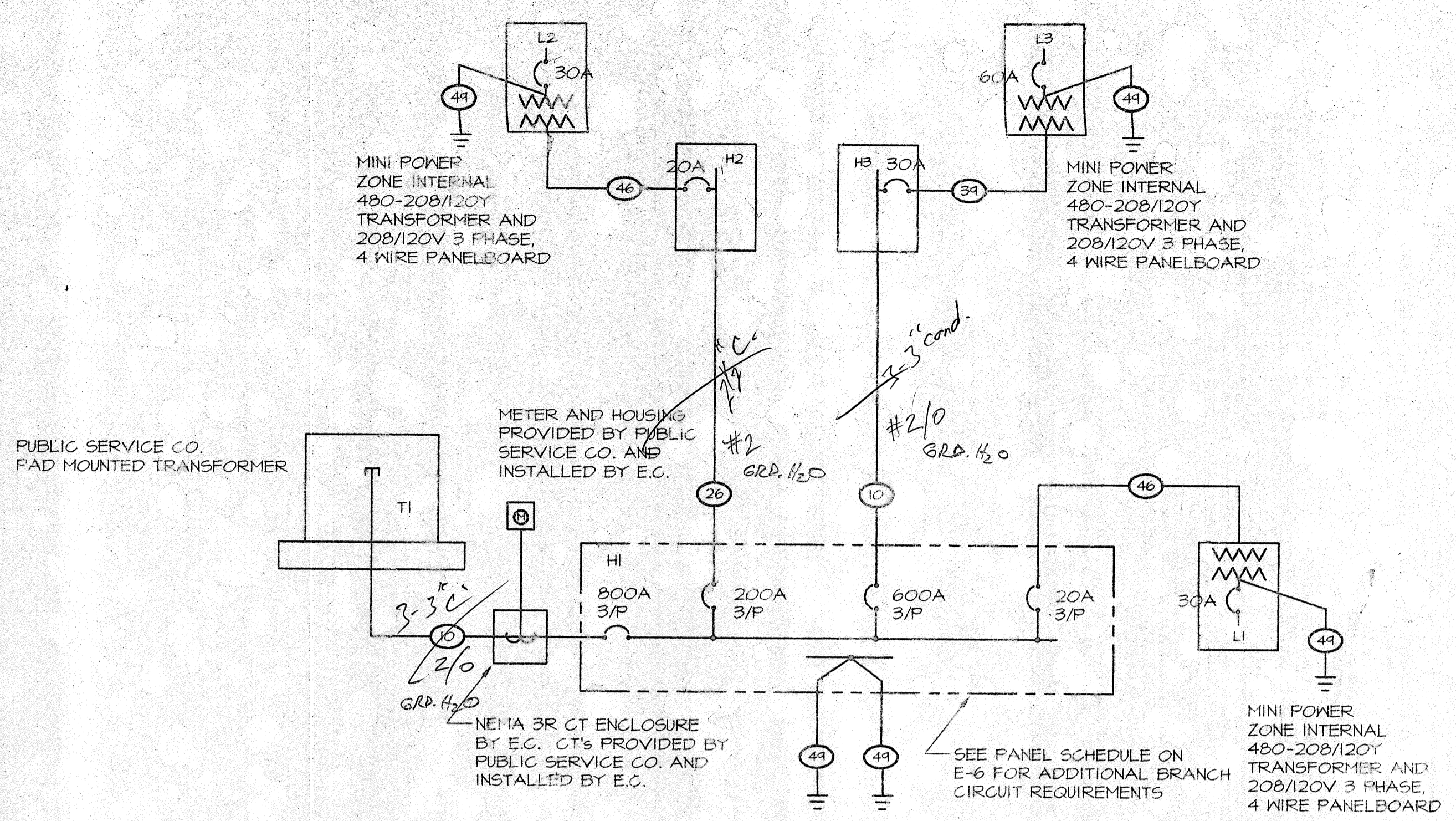
Purpose	Date

PHASE 1
CANYON VIEW PARK
CITY OF GRAND JUNCTION, COLORADO

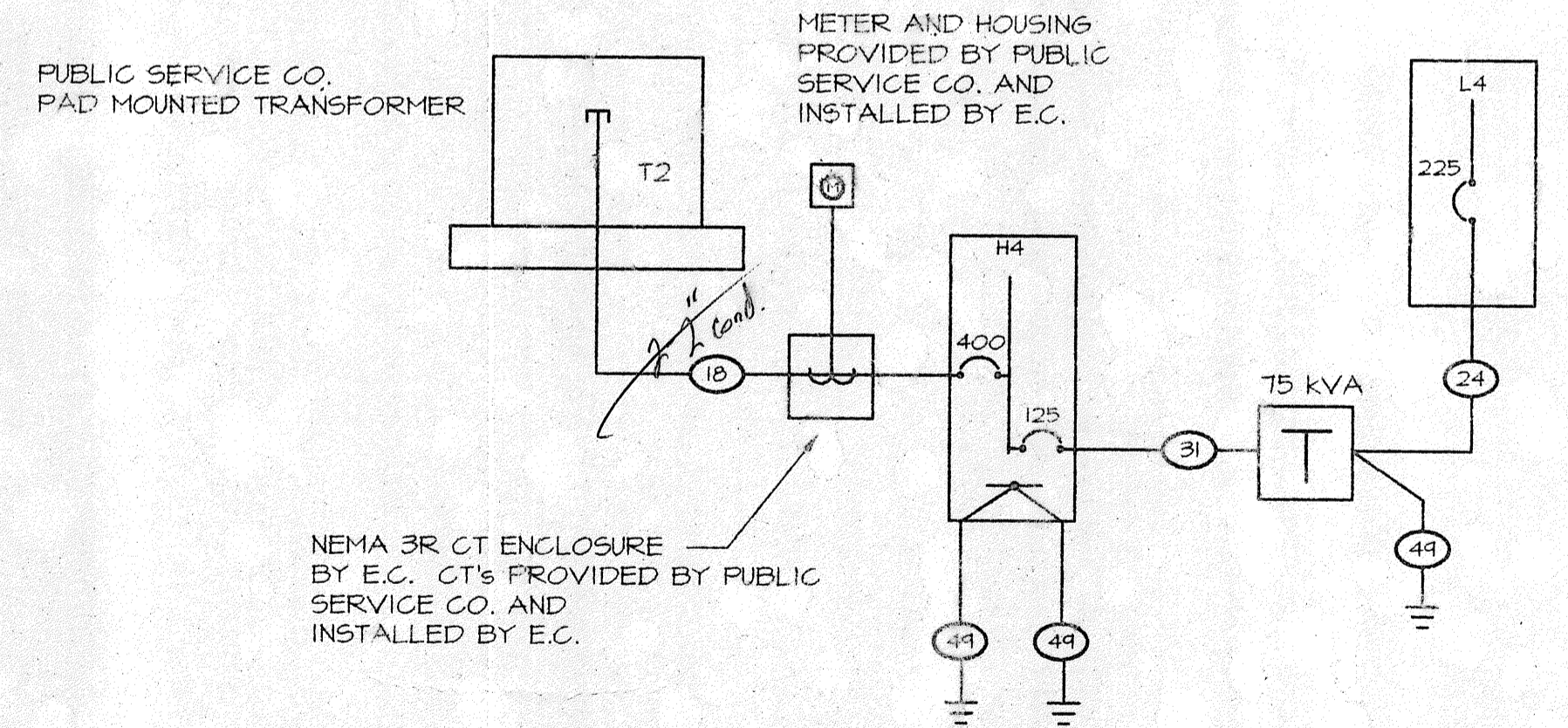


38

Sheet T1
 ELECTRICAL
 SCHEDULE



PARK AREA ELECTRICAL ONE-LINE DIAGRAM
 NO SCALE



MAINTENANCE AREA ELECTRICAL ONE-LINE DIAGRAM
 NO SCALE

FEEDER NO.	FEEDER CONDUCTORS	PHASE	AMPERERS
1	UNASSIGNED		
2	UNASSIGNED		
3	4-500MCM, 3-1/2"	3-4W	3000
4	6-4-400MCM, 1-250MCM, 3"	3-4W	2000
5	4-350MCM, 1-3/0, 3"	3-4W	1200
6	4-4-350MCM, 1-3/0, 3"	3-4W	1200
7	3-4-400MCM, 1-2/0, 3"	3-4W	1000
8	3-4-400MCM, 1-2/0, 3"	3-4W	1000
9	3-3-300MCM, 1-1/0, 2 1/2"	3-4W	800
10	3-4-300MCM, 1-1/0, 3"	3-4W	800
11	3-3-250MCM, 1-1/0, 3"	3-4W	750
12	3-4-250MCM, 1-1/0, 3"	3-4W	750
13	2-3-250MCM, 1#6-3"	3-4W	600
14	2-4-350MCM, 1#6-3"	3-4W	600
15	2-3-250MCM, 1#2-3"	3-4W	500
16	2-4-250MCM, 1#2-3"	3-4W	500
17	2-3-3/0, 1#3-2"	3-4W	400
18	2-4-3/0, 1#3-2"	3-4W	400
19	2-3-2/0, 1#3-2"	3-4W	350
20	2-4-2/0, 1#3-2"	3-4W	350
21	3-3-350MCM, 1#4-3"	3-4W	300
22	4-350MCM, 1#4-3"	3-4W	300
23	3-250MCM, 1#4-3"	3-4W	250
24	4-250MCM, 1#4-3"	3-4W	250
25	3-4/0, 1#4-2"	3-4W	225
26	4-4/0, 1#4-2 1/2"	3-4W	225
27	3-3/0, 1#3-2"	3-4W	200
28	4-3/0, 1#3-2"	3-4W	200
29	3-2/0, 1#3-2"	3-4W	175
30	4-2/0, 1#3-2"	3-4W	175
31	3-1/0, 1#3-2"	3-4W	125-150
32	4-1/0, 1#3-2"	3-4W	125-150
33	3#1, 1#3-1 1/2"	3-4W	100-110
34	4#1, 1#3-1 1/2"	3-4W	100-110
35	3#2, 1#3-1 1/4"	3-4W	90
36	4#2, 1#3-1 1/4"	3-4W	90
37	3#3, 1#3-1 1/4"	3-4W	80
38	4#3, 1#3-1 1/4"	3-4W	80
39	3#4, 1#3-1 1/4"	3-4W	60-70
40	4#4, 1#3-1 1/4"	3-4W	60-70
41	3#6, 1#10-1"	3-4W	50
42	4#6, 1#10-1"	3-4W	50
43	3#8, 1#10-1"	3-4W	40
44	4#8, 1#10-1"	3-4W	40
45	3#10, 1#10-3/4"	3-4W	30
46	4#10, 1#10-3/4"	3-4W	30
47	3#12, 1#12-3/4"	3-4W	20
48	4#12, 1#12-3/4"	3-4W	20
49	1-#26-1/2"	6	6
50	3#2/0, 2#2/0 N, 1#6-2"	3-4W	150
51	3-250MCM, 2-250MCM N, 1#4-3"	3-4W	250
52	2-3-3/0, 2-3/0 N, 1#3-2 1/2"	3-4W	400

NOTE: ALL CONDUCTORS ARE 1/2-TWY-COPPER UNLESS NOTED OTHERWISE

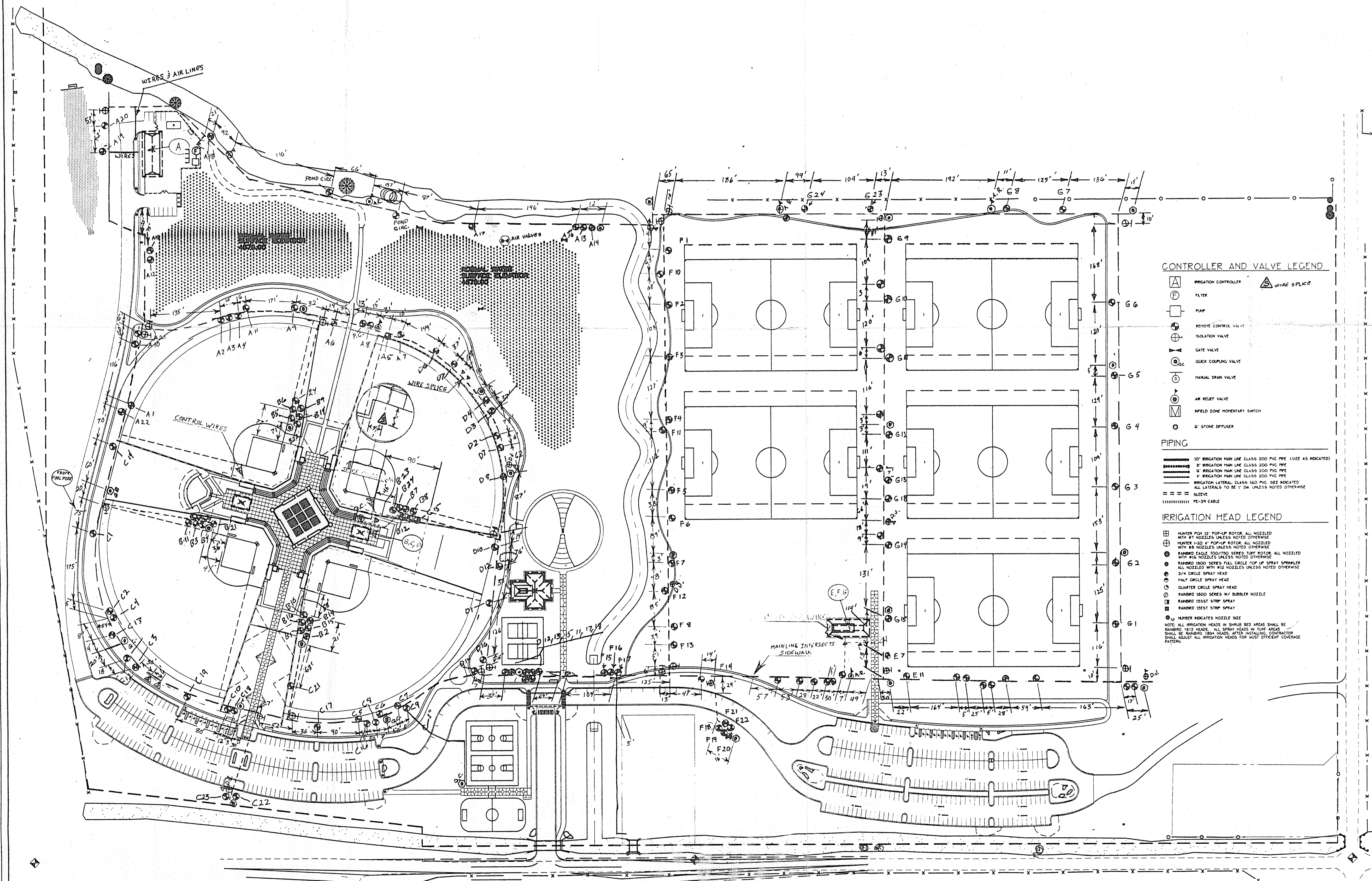
ELECTRICAL LEGEND	
NOTE: ALL ITEMS MAY NOT APPEAR ON DRAWINGS	
⊖ GROUNDED SWITCHED DUPLEX RECEPTACLE	⊖ FIRE HORN OR SPEAKER WITH STROBE
⊖ GROUNDED SPLIT-WIRED RECEPTACLE	⊖ PORCELAIN LAMP HOLDER
⊖ GROUNDED DUPLEX RECEPTACLE	⊖ RECESSED LIGHT FIXTURE
⊖ GROUNDED QUADRAPLEX RECEPTACLE	⊖ EMERGENCY FIXTURE - SHADED
⊖ SPECIAL PURPOSE RECEPTACLE	⊖ SURFACE MOUNTED LIGHT FLUORESCENT
⊖ FLOOR MOUNTED RECEPTACLE	⊖ CEILING FIXTURE
⊖ FLOOR MOUNTED DATA OUTLET	⊖ HALLMASHER
⊖ FLOOR MOUNTED TELEPHONE OUTLET	⊖ STRIPLIGHT
⊖ DATA OUTLET	⊖ POLE MOUNTED AREA LIGHT
⊖ TELEPHONE/DATA OUTLET	⊖ POLE MOUNTED SPORTS LIGHT
⊖ TELEPHONE OUTLET	⊖ LARGE MOUNTED SPORTS LIGHT
⊖ JUNCTION BOX	⊖ WALL MOUNTED FIXTURE
⊖ WALL MOUNTED JUNCTION BOX	⊖ BATTERY PACK EMERGENCY LIGHT
⊖ EQUIPMENT DISCONNECT SWITCH	⊖ SINGLE POLE SWITCH
⊖ EQUIPMENT FUSED DISCONNECT SWITCH	⊖ DIMMER SWITCH
⊖ THERMAL OVERLOAD SWITCH	⊖ SPEAKER-PAGING AND/OR SOUND SYSTEM
⊖ ELECTRICAL PANEL BOARD	⊖ PLUGMOLD
⊖ TELEPHONE TERMINAL BOARD	⊖ EWC ELECTRIC WATER COOLER
⊖ TRANSFORMER	⊖ EF EXHAUST FAN
⊖ HOMERUN TO PANEL - ARROWS INDICATES NUMBER OF CIRCUITS	⊖ GFI GROUND FAULT INTERRUPTER
⊖ FIRE ALARM PANEL	⊖ CCT CIRCUIT
⊖ FIRE ALARM REMOTE ANNUNCIATOR PANEL	⊖ EC FLEX IFICAL CONTRACTOR
⊖ MANUAL PULL STATION	⊖ AC ABOVE COUNTER - VERIFY HEIGHT
⊖ SMOKE DETECTOR	⊖ WP WEATHER PROOF
⊖ FIRE ALARM HORN & LIGHT	⊖ TTD TELEPHONE TERMINAL BOARD
⊖ DUCT FIRE DETECTOR	⊖ UNLESS OTHERWISE NOTED
⊖ REMOTE INDICATING LIGHT	⊖ E EXISTING TO REMAIN
⊖ EXIT SIGN - SHADED INDICATES FACE	⊖ FR EXISTING TO BE RELOCATED
⊖ FIRE STROBE	⊖ EX EXISTING TO BE REMOVED

LUMINAIRE SCHEDULE							
KEY	DESCRIPTION	LAMP	MOUNTING	HFR. # CATNO.	VOLTS	NOTE	MAX WATT
A-1	SPORT LIGHTING FIXTURE	1500MH	70' POLE	LITHONIA TV-1500M-NEMA4	480	2	1575
A-2	SPORT LIGHTING FIXTURE	1500MH	60' OR 70' POLE	LITHONIA TV-1500M-NEMA5	480	2	1575
A-3	SPORT LIGHTING FIXTURE	1500MH	60' POLE	LITHONIA TV-1500M-NEMA6	480	2	1575
B	SPORT LIGHTING FIXTURE	1000MH	30' POLE	LITHONIA KSF3-1000M-R4	480		1070
B-2	DOUBLE HEAD SPORTS LIGHTING FIXTURE	(2)1000MH	30' POLE	LITHONIA KSF3-1000M-R4	480		2140
C	WALKWAY LIGHT ON 12' POLE	150MH	12' POLE	STERNER FT A 10 3D P	480	5	215
E	SIGNAGE UPLIGHT	MH150	GROUND	HYREL 4530A-MH150/DUL	277		215
F	BUILDING FLOOD LIGHT	F260BX/SPX35	SURFACE 9'-6" DN WALL	HUBBELL EURELUXE BRF-02 WITH BR-G2	120	3	30
H	VANDAL RESISTANT FLUORESCENT STRIP LIGHT	F32	SURFACE CEILING	LITHONIA VRI 2 32 AR 120	120	1	64
K	INDUSTRIAL STRIP LIGHT WITH WIREGUARD	(2)F32TR	SURFACE CEILING	LITHONIA S132 HKS 120 WITH REFLECTORS SM40 & WIR VIREGUARD	208	1	64
L	INDUSTRIAL BUILDING FLOOD LIGHT	100MH	SURFACE 9'-6" DN WALL	HUBBELL EURELUXE BBS-01 WITH BR-G2	277		
M	SECURITY FLOODLIGHT	400MH	AT POLE	LITHONIA TFG400MHA120	120	4	460

- NOTES:
- COLD WEATHER BALLAST.
 - SPORTS FIELD LIGHTING DESIGN IS BASED ON LITHONIA FIXTURES. SEE ELECTRICAL SPECIFICATIONS FOR REQUIREMENTS FOR OTHER MANUFACTURERS.
 - WALKWAY FIXTURE 8'-6" AT COLUMN LOCATIONS
 - TO BE MOUNTED ON SOCCER FIELD LIGHTING POLE. COORDINATE MOUNTING WITH POLE MANUFACTURER.
 - FIXTURES TO HAVE INDIVIDUAL PHOTOCCELL CONTROL SUPPLIED BY CONTRACTOR. POLE AND FIXTURE FINISH TO MATCH PARKING LOT FIXTURES.

Issue Record/Revision

Purpose	Date



CONTROLLER AND VALVE LEGEND

- IRRIGATION CONTROLLER
- FILTER
- PUMP
- REMOTE CONTROL VALVE
- ISOLATION VALVE
- GATE VALVE
- QUICK COUPLING VALVE
- MANUAL DRAIN VALVE
- AIR RELEIF VALVE
- FIELD ZONE MOMENTARY SWITCH
- 6" STONE DIFFUSER
- WIRE SPLICE

PIPING

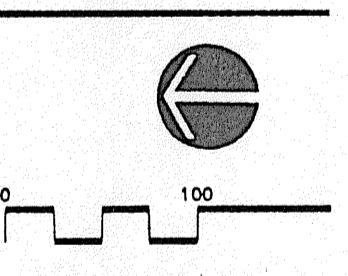
- 10" IRRIGATION MAIN LINE CLASS 200 PVC PIPE (SIZE AS INDICATED)
- 8" IRRIGATION MAIN LINE CLASS 200 PVC PIPE
- 6" IRRIGATION MAIN LINE CLASS 200 PVC PIPE
- IRRIGATION LATERAL CLASS 160 PVC (SEE INDICATED)
- ALL LATERALS TO BE 1" DIA UNLESS NOTED OTHERWISE
- SLEEVE
- PE-OR CABLE

IRRIGATION HEAD LEGEND

- HAMPTON 1200 1/2" POP-UP ROTOR ALL NOZZLED WITH 1/2" NOZZLES UNLESS NOTED OTHERWISE
 - HAMPTON 1812 4" POP-UP ROTOR ALL NOZZLED WITH 1/2" NOZZLES UNLESS NOTED OTHERWISE
 - RANDMOR EDGE 700/750 SERIES TUFF ROTOR ALL NOZZLED WITH 1/2" NOZZLES UNLESS NOTED OTHERWISE
 - RANDMOR 1800 SERIES FULL CIRCLE POP UP SPRAY SPINNER ALL NOZZLED WITH 1/2" NOZZLES UNLESS NOTED OTHERWISE
 - 3/4 CIRCLE SPRAY HEAD
 - 1/2 CIRCLE SPRAY HEAD
 - QUARTER CIRCLE SPRAY HEAD
 - RANDMOR 1800 SERIES W/ NUMBER NOZZLE
 - RANDMOR 1855ST STOP SPRAY
 - RANDMOR 1855ST STOP SPRAY
 - 10 NUMBER INDICATES NOZZLE SIZE
- NOTE: ALL IRRIGATION HEADS IN SHURUB BED AREAS SHALL BE RANDMOR 1812 HEADS. ALL SPRAY HEADS IN TURF AREAS SHALL BE RANDMOR 1855ST HEADS. AFTER INSTALLING CONTRACTOR SHALL ADJUST ALL IRRIGATION HEADS FOR MOST EFFICIENT COVERAGE PATTERN.

PHASE 1
CANYON VIEW PARK
CITY OF GRAND JUNCTION, COLORADO

CLAVONNE & ASSC
SITE PLANNING
LANDSCAPE ARCHITECT
844 GRAND AV
GRAND JUNCTION, CO
PHONE (970)241-0745 FAX (970)241-0746



Sheet Key

Sheet Title

AS-BUILT F

Date

Drawn By

Checked By

Project Number

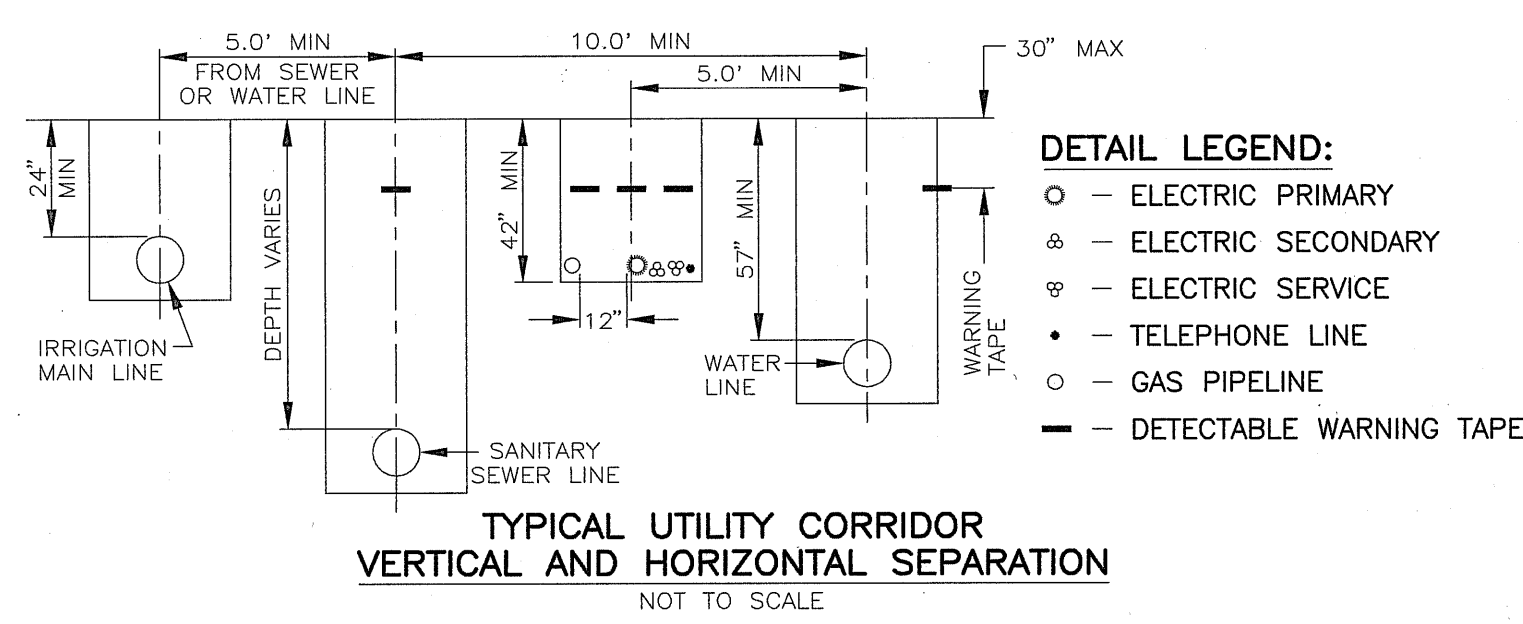
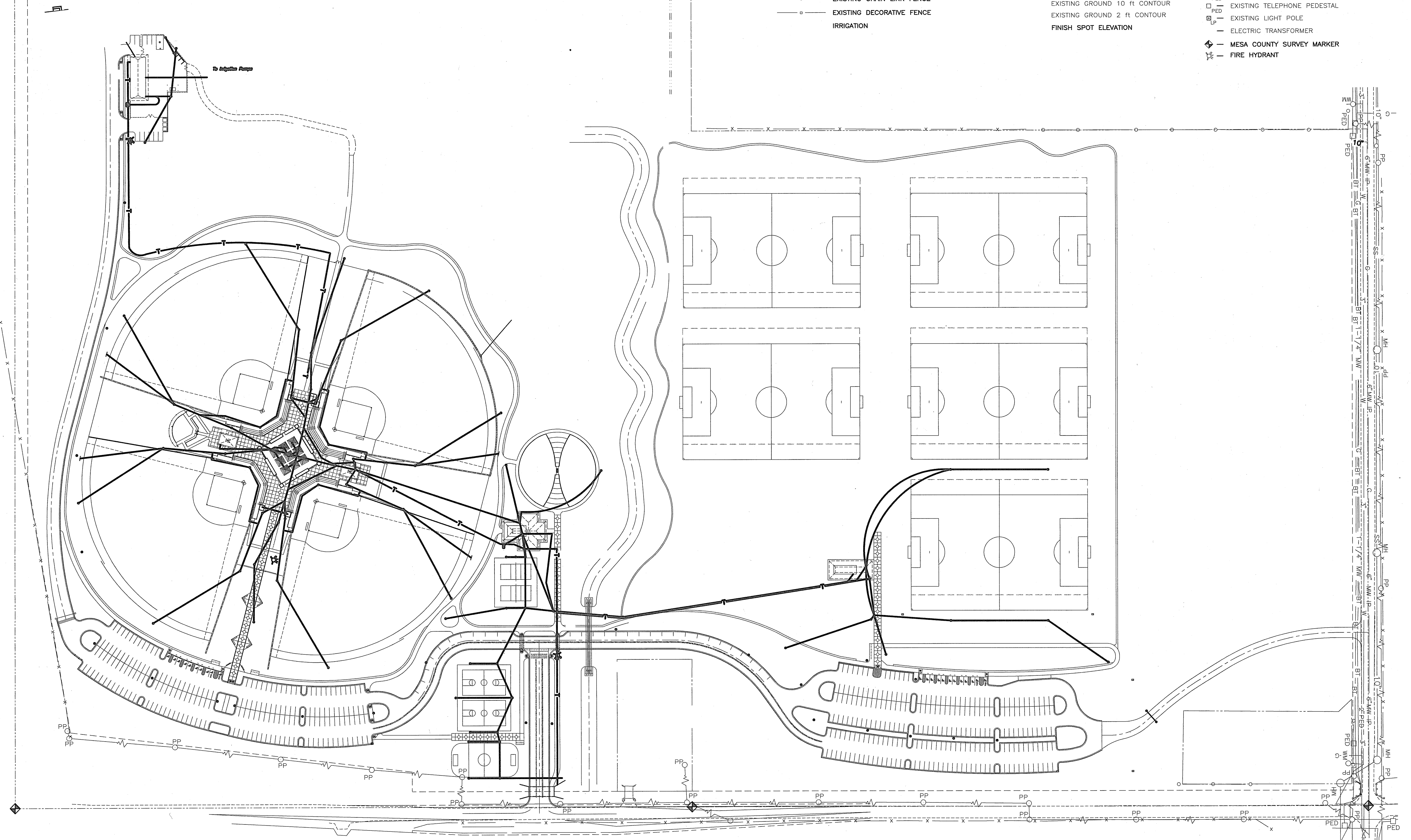
7240

Sheet Number

FOR ROAD PLAN AND PROFILES SEE SHEETS C2-1, C2-3, C2-4, C2-6.1 AND C2-6.2.
 FOR SOCCER FIELD PARKING LOT GRADING AND DRAINAGE PLAN SEE SHEET C2-2.2.
 FOR SOFTBALL FIELD PARKING LOT GRADING AND DRAINAGE PLAN SEE SHEET C2-5.2.
 FOR SOCCER FIELD TRENCH DRAIN PLAN AND DETAILS SEE SHEET C4-5.
 FOR GENERAL DRAINAGE DETAILS SEE SHEET C4-4.
 FOR IRRIGATION POND 1 DETAILS, SEE SHEET C6-1.
 FOR IRRIGATION LINES, SEE SHEET I-1 THROUGH I-13.

LEGEND:

- | | | | | | |
|-----|------------------------------|-----|-------------------------------|------------------|----------------------------------|
| —●— | EXISTING OVERHEAD POWER LINE | --- | SECTION LINE | Q _{WM} | EXISTING WATER METER |
| --- | EDGE OF EXISTING ASPHALT | --- | DEEDED ROW | Q _{WV} | EXISTING WATER VALVE |
| SS | SEWER LINE | --- | DEEDED PROPERTY LINE | Q _{PP} | EXISTING POWER POLE |
| T | BURIED TELEPHONE LINE | --- | GRADE BREAK | Q _{PA} | EXISTING GUY ANCHOR |
| W | BURIED WATER LINE | --- | FINISH GROUND 10 ft CONTOUR | Q _{MH} | SANITARY SEWER MANHOLE |
| X | EXISTING WIRE FENCE | --- | FINISH GROUND 2 ft CONTOUR | --- | EXISTING SIGN |
| ○ | EXISTING CHAIN LINK FENCE | --- | FINISH GROUND 1 ft CONTOUR | □ _{PED} | EXISTING PUBLIC SERVICE PEDESTAL |
| ○ | EXISTING DECORATIVE FENCE | --- | EXISTING GROUND 10 ft CONTOUR | □ _{TEL} | EXISTING TELEPHONE PEDESTAL |
| --- | IRRIGATION | --- | EXISTING GROUND 2 ft CONTOUR | □ _{LP} | EXISTING LIGHT POLE |
| | | --- | FINISH SPOT ELEVATION | --- | ELECTRIC TRANSFORMER |
| | | ◆ | | ◆ | MESA COUNTY SURVEY MARKER |
| | | ⊕ | | ⊕ | FIRE HYDRANT |



WINSTON ASSOCIATES
 PLANNING AND LANDSCAPE ARCHITECTURE

WINSTON ASSOCIATES, INC.
 1320 PEARL STREET MALL
 BOULDER, COLORADO 80302
 PHONE: (303) 440-9200 FAX: (303) 448-6911

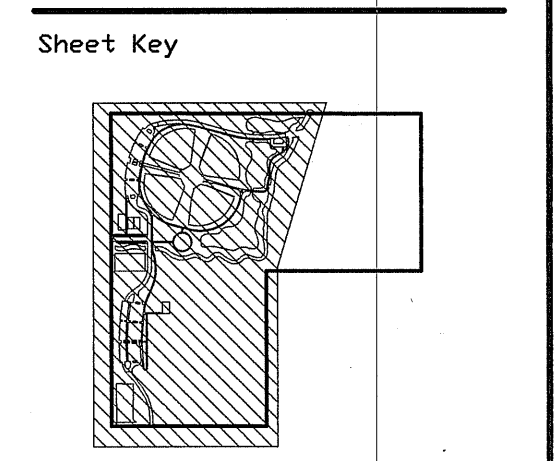
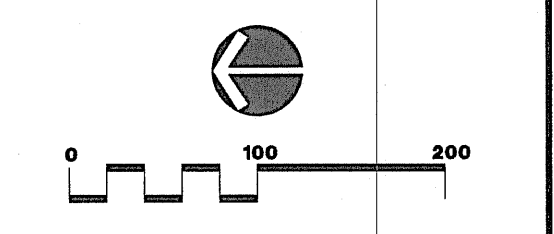
Copyright 1995 ALL DRAWN AND WRITTEN INFORMATION APPEARING HEREIN SHALL NOT BE DUPLICATED, DISCLOSED OR OTHERWISE USED WITHOUT WRITTEN CONSENT OF WINSTON ASSOCIATES, INC.

Issue Record/Revision

Purpose	Date
ASBULT	00-00-97

PHASE 1
CANYON VIEW PARK
 CITY OF GRAND JUNCTION, COLORADO

WESTERN ENGINEERS, INC.
 CONSULTING ENGINEERS/SURVEYORS
 2150 HIGHWAY 6 & 50
 GRAND JUNCTION, COLORADO
 PHONE: (970)242-5202
 FAX: (970)242-1672



Sheet Title

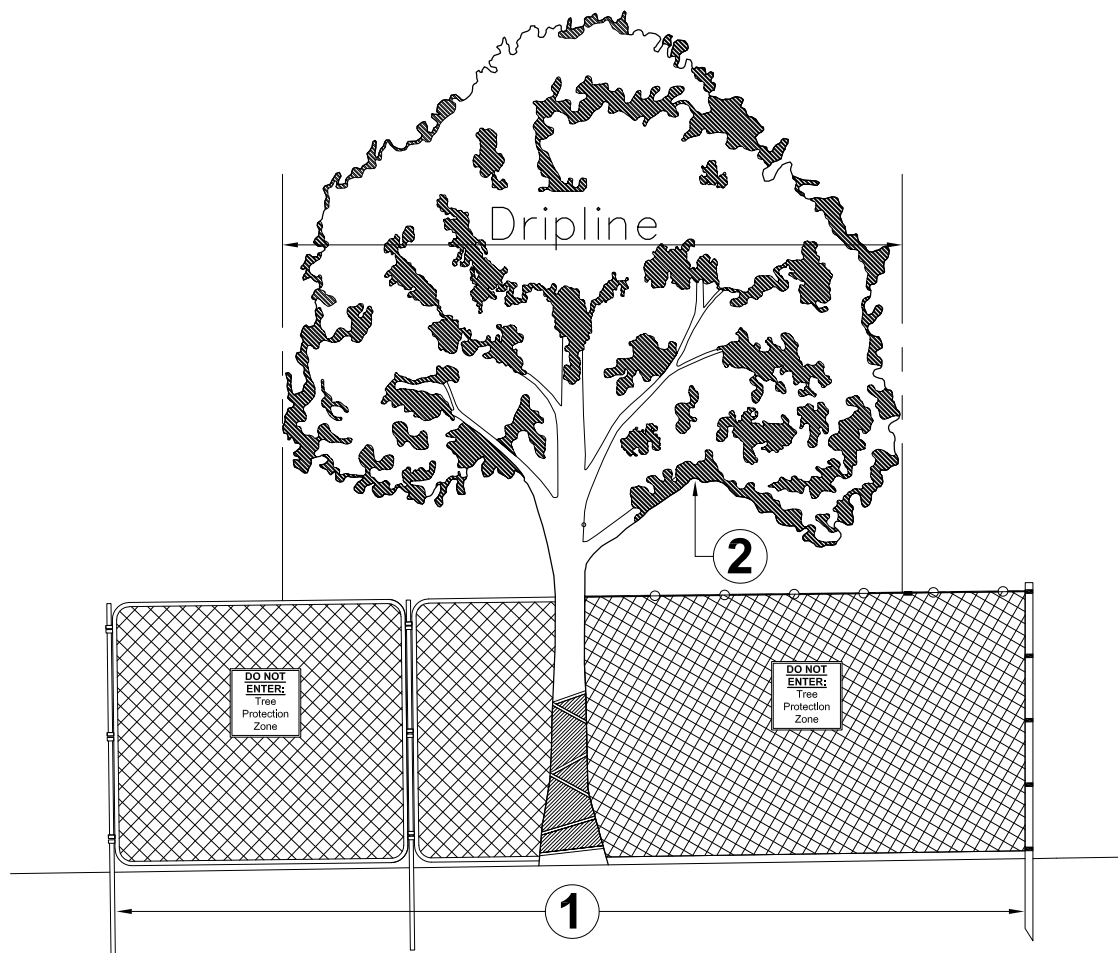
UTILITY COMPOSITE

Date: **12/20/95**
 Drawn By: **C.E.A.**
 Checked By: **G.L.L.**
 Project Number: **72401**
 Sheet Number: **U1-1**

WESTERN ENGINEERS, INC. CONSULTING ENGINEERS / LAND SURVEYORS
 2150 Hwy 6 & 50, Grand Junction, CO (970)242-5202

PHASE 1
ELECTICAL

WEI PROJECT #: 3773.00 U1-1.DWG



Any work in these areas require approval from Grand Junction City Forester (GJCF) prior to activity. Contact GJCF for instruction.

Area 1: Tree Protection Zone and Critical Root Zone Protection

- The Tree Protection Zone (TPZ) shall be equal to dripline or 1.5 feet radially from the tree for every one inch of trunk diameter at breast height (DBH = 4.5' above soil line), whichever is greater.
- The Critical Root Zone (CRZ) shall be equal to one foot radially from the tree for every on inch of trunk diameter at breast height.

- A. Minimum 6' in height steel chain link fence is required unless otherwise approved by the GJCF. Steel chain link fence panels or rolls are acceptable.
 1. When chain link rolls are installed, it shall be fastened to heavy duty steel posts with safety caps at minimum five (5) attachment points with 12-gauge wire, including points at top and bottom. Weave wire through top of roll to eliminate sag.
 2. Posts shall be driven 2' to 3' below grade and spaced at max. five to ten foot (5' - 10') o.c. intervals. Fencing must be kept taut at all times.
 3. "Tree Protection Zone" signs shall be placed one (1) per each tree protection zone minimum or more per direction of GJCF; maintain in the location and condition in which approved.
 4. TPZ, including signage, shall be maintained in the location and condition in which approved.

Area 2: Canopy Protection

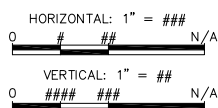
Contact GJCF if potential for damage exists and/or if pruning is needed for any clearance issues prior to performing work.

Notes

1. GJCF Tree Protection Specifications shall be followed throughout duration of work.
2. After TPZ is approved;
 - A. TPZ shall not be resized, modified, removed, or altered in any manner without prior written approval. TPZ shall be maintained in place as approved until removal is authorized by GJCF.
 - B. Entrance/access to the TPZ is not permitted without prior written approval from the GJCF.
 - C. No materials, debris, equipment, or site amenities shall be stored within the TPZ without prior written approval from the GJCF.
3. While TPZ fencing is in place, trees shall be deep-root watered at an interval of once every two weeks when temperatures are at or above 40 degrees F. Trees shall be watered at the rate of twenty-five (25) gallons per inch DBH. GJCF may ask for proof of watering.
4. Violation of TPZ or damage to protected trees is subject to penalty per City Ordinance.
5. **Responsible party for tree removal or damage shall be responsible for lost value based on industry standard tree appraisal methods as determined by GJCF.**

DRAWN BY KA DATE 01/2021

DESIGNED BY RD DATE 01/2021



**PARKS AND RECREATION
FORESTRY DIVISION**

**TREE PROTECTION ZONE
FENCING DETAIL**



Grand Junction City Forester (GJCF) Tree Protection Specifications

1. Existing trees to be preserved in public rights of way (ROW) or public places shall be protected per GJCF standards and practices. Tree protection shall be:
 - A. Installed prior to commencement of demolition and/or construction activities
 - B. Inspected and approved by GJCF staff
 - C. Remain in place and as approved until Certificate of Occupancy or Substantial Completion and Final Acceptance is issued
2. Tree protection requirements:
 - A. Tree Protection Zone (TPZ) shall be installed at the dripline, furthest extent of tree canopy, or is equal to eighteen inches radially from the tree for every one inch of trunk diameter at breast height (DBH = 4.5' above soil line), whichever is greater
 - Reduced TPZ areas must be approved by GJCF
 - B. Install six foot (6') chain link fencing prior to commencement of project construction activities
 - With approval of GJCF, 4' orange construction fencing may be acceptable in place of chain link depending on potential impacts of activity
 - C. GJCF staff shall inspect and approve boundaries of tree protection zone(s) prior to commencement of demolition or construction activities
 - D. Once TPZ is in place, the following are not permitted within TPZ without prior written approval from GJCF:
 - Entrance and/or access
 - Moving, resizing, removing, or altering in any manner
 - Storage of materials/debris/equipment
 - Construction activities including but not limited to: rototilling, trenching, grading, installation of underground utilities and/or site improvements, landscaping, irrigation work
 - Irrigation line work shall be completed by directional bore or hand-dig method
 - E. "Tree Protection Zone" signs shall remain in place as posted by GJCF and shall be maintained in the condition in which they were installed
 - F. Tree Pruning for clearance issues must have prior authorization by GJCF staff
 - G. No root 2 inches or larger shall be cut; consult with GJCF staff
3. Existing ROW or public place trees approved for removal by OCF must be protected in place until removed by an GJCF-licensed tree contractor to avoid structural failures:
 - A. A GJCF tree removal permit is required
 - B. Tree removal permits are not included with building permits and/or plan approval and must be obtained separately from the GJCF
4. Clear visibility into TPZ must be maintained. All construction banners, screens, barriers, and/or signs (except GJCF-posted TPZ signs) must be semi-transparent and not impede inspection of TPZ by GJCF staff
5. For projects with a duration of 5 days or longer:
 - A. Protected trees shall be deep-root watered at a minimum interval of once every two weeks when temperatures are at or above 40-degrees
 - B. Trees shall be watered at the rate of 20 gallons per inch caliper
 - OCF may ask for documented proof of watering and/or treatment.
6. Tree removal without permit and damages to public trees may be subject to the following:
 - A. Responsible party for tree removal or tree damage shall be responsible for lost value based on industry standard tree appraisal methods as determined by GJCF