

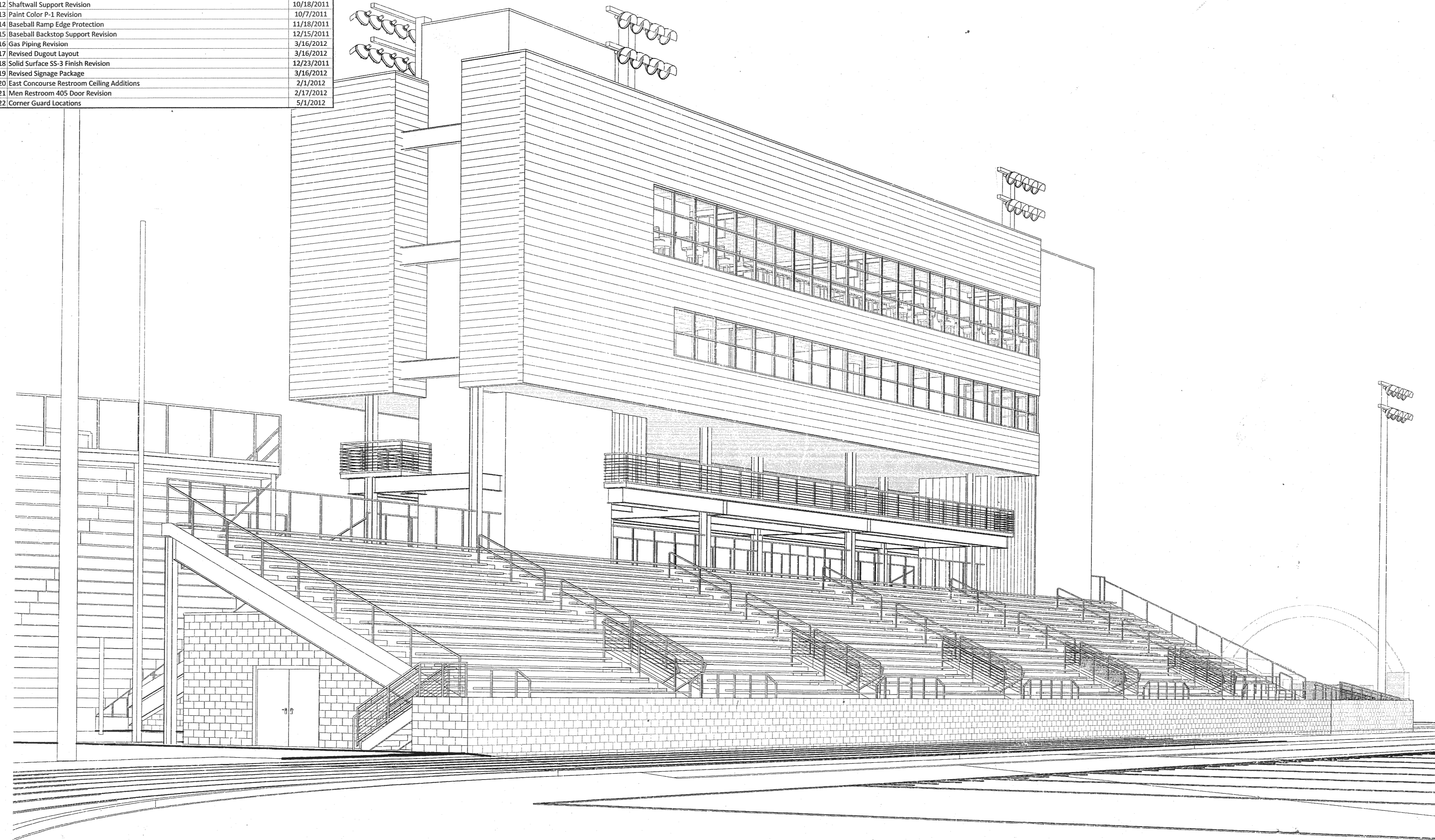
# LINCOLN PARK STADIUM IMPROVEMENTS

## STOCKER STADIUM

## SUPLIZIO FIELD

RFI No.	Subject	Posted
1	Vertical Reinforcing Bar Placement at Vertical Cores	6/14/2011
2	Locations of Floor Sinks	6/24/2011
3	Construction Base Elevation 100' 0"	6/14/2011
4	Pile Wall Thickness	6/14/2011
5	Anchor Bolt and Base Plate Finish	6/24/2011
6	Bulletin #1 Plumbing Clarifications	No Post
7	Chase Space for Water Closet Carriers	No Post
8	Elevator Shaft Opening Dimension	7/18/2011
9	Deletion of Area Drains at Dugouts	No Post
10	Trench Drains at Dugouts	7/20/2011
11	Location of Dugout Pump Controls	7/18/2011
12	Surge Pump Connection to Storm Drains	7/18/2011
13	3rd Base Dugout Location	7/19/2011
14	Confirmation of Hot Dipped Galvanized Finish for Anchor Bolts	7/20/2011
15	Height of Press Box Work Surfaces	7/20/2011
16	Added File at West Shear Wall Foundation	7/21/2011
17	Waterproofing at the Dugouts	7/20/2011
18	Location of Floor Sink at Catering Kitchen 105 Walk-In Freezer	No Post
19	Thickness of Piles Along Grid Line 1.2	7/26/2011
20	Drilled Holes at Stair Tower Embeds	8/8/2011
21	V-Groove at Exposed Shear Wall Construction Joints - Revised	7/28/2011
22	Revised Concrete Mix Design for Exposed Areas	7/29/2011
23	Revised HVAC Instrumentation and Controls Submittal	7/29/2011
24	Additional Questions on Approved Metal Decking Shop Drawings	7/29/2011
25	AWS D1.8 Welding Code Requirement	7/29/2011
26	Use of Cast-in-Place Design Mix #118 on Piles	No Post
27	Clarifications to Approved Embed Shear Drawing	8/5/2011
28	Foundation Tie-Wall at Grid Line 1.2	No Post
29	Routing of the Sanitary Sewer	9/8/2011
30	Revised Sewer Piping Underneath Building Footprint	9/8/2011
31	Elevator Electrical Requirements	8/12/2011
32	Concrete Mix Design at Dugout Walk	8/28/2011
33	Area Drains Installed at 1/4" Pile Deck	8/28/2011
34	Area Drains at Concourse Level	9/26/2011
35	Conflicts with Form Saver Install at Embed Points	8/25/2011
36	Deletion of Embed Plates for Stair 01 and 02 Roof	9/26/2011
37	Heat Trace for Area Drain Piping at Spectator Platform Level - VOID	No Post
37B	Heat Trace for Area Drain Piping at Spectator Platform Level - VOID	No Post
38	Existing Grate at 3rd Base Dugout	9/6/2011
39	Dimensions for Aprons at Dugouts	9/8/2011
40	Synthetic Fiber for Slab-On-Grade Concrete	9/26/2011
40R	Synthetic Fiber for Slab-On-Grade Concrete - Revised	9/26/2011
41	Area Drain AD-5 Submittal	9/8/2011
42	Incorporation of Door Hardware Items Per Architect's Submittal Comments - Revised	10/7/2011
42R	Incorporation of Door Hardware Items Per Architect's Submittal Comments - Revised	10/7/2011
43	Unlabeled Mounting	9/26/2011
44	Relocation of Electrical Panels CH2 and CL3	10/3/2011
45	Changes to Thickened Slabs Per Bulletin 04R	9/26/2011
46	Proposed Relocation of Area Inlet #1	9/26/2011
47	Bulldozers Corners at CMU	10/3/2011
48	Cover Board Revision at EPDM and TPO Roofs	9/26/2011
49	Embeds for Stair 02 Landing at Roof Level	10/3/2011
50	Swing/Location of Doors ST01.1, ST02.1, ST02.2, and 201	10/3/2011
51	Removal of Existing Tie Beams at North Side of Site	10/7/2011
52	Concrete Mix Design for Metal Stair Pans	10/7/2011
52R	Concrete Mix Design for Metal Stair Pans - Revised	10/21/2011
53	Conduits Routed to the Roof for City Antennas	10/7/2011
54	Water Lines Serving Men's Restroom 103 and Catering Kitchen 105	10/7/2011
55	Trench Drains at 1st Base Side Walkway	10/21/2011
56	Stair Landing Deck Attachment	10/7/2011
57	Freezer Frost Hour Bib at Spectator Platform Level	10/7/2011
58	Concrete Stair/Metal Railing at Dugout Entrances	10/28/2011
59	Location of New Water Meter	10/28/2011
60	Upgrading of Electrical Panel CH1 and the Main Electrical Gear	10/28/2011
61	Seal Wall at Bleacher Pan Joins	11/3/2011
62	Structural Area Drains at Spectator Platform Level	11/3/2011
63	Plumbing for AD-1 Area Drains at the Spectator Platform Level	11/3/2011
64	Floor and Roof Deck Side Lap Attachment	11/3/2011
64R	Floor and Roof Deck Side Lap Attachment - Revised	12/23/2011
65	Attachment of Baseball Front Ball at 1st Base Side	11/3/2011
66	Synthetic Fiber Added at Spectator Platform Level Slab on Deck	11/3/2011
67	Access to and Installation of Point-of-Use Water Heaters at Concourse Level "Cavity" Areas	11/15/2011
68	3rd Base Side Light Pole Foundation Stabilization	11/15/2011
69	Added Hand Dryer at Family Restroom 111	11/15/2011
70	Added Short Walls at Concourse Level Low Roofs	11/15/2011
71	Miscellaneous Emergency/Exit Lighting Fixture Issues	11/15/2011
71R	Miscellaneous Emergency/Exit Lighting Fixture Issues - Revised	11/29/2011
72	Extend Fan North Wall of Restroom 202 for Exhaust Duct	11/15/2011
73	Slab Edge Angle Welds at Press Box and Hospitality Levels	11/29/2011
74	Light Switch Heights at CMU Walls	11/15/2011
75	Lighting Conditions at Men/Women Restroom 116/119	11/18/2011
76	Structural Support of Floor Sinks at Hospitality Level	11/29/2011
77	Lower Elevations at Concourse Level	11/29/2011
78	Lighting Fixture Mounting at True East Concourse Level Rooms	11/29/2011
79	Relocation of Drinking Fountain at Concourse Level	12/23/2011
80	Ceiling Heights at the Hospitality Level	11/29/2011
81	Electric Unit Heater at Stair ST02 MEP Shaft	12/23/2011
82	Revisions to Valley Pan at True West Side	12/23/2011
83	Change from 1/4" AOM Freonless Tied Hydram	12/23/2011
84	Overhead Demising at Football Side	12/23/2011
85	Gas Service Pressure to Tower and Locker Room	12/23/2011
86	Fluor Sink Installation at Storage 112	12/23/2011
87	Masonry Cap Attachment, Revised Flashing Detail, and Masonry Sealant at CMU Wall Along Gridline 6	12/23/2011
88	Rein Steel Receiving Channel at Top of CMU Wall at 120, 121	12/23/2011
89	Thickened Slabs at Maintenance 115 CMU Wing Walls	12/23/2011
90	24" x 20" Return Duct at Hospitality Level (Between Gridlines E.2 and E.4)	12/23/2011
91	Deletion of Metal Drip Edge at CMU	12/23/2011
92	Changes to Roof Height/Supports at Concession 107 and Grille 109	1/6/2012
93	Electrical Panel WP1: Food Service Coordination	1/23/2012
94	Light Fixture Changes Per Above Ceiling MEP Coordination	2/1/2012
94R	Light Fixture Changes Per Above Ceiling MEP Coordination - Revised	2/1/2012
95	Location of 4" Depression for Future Walk-In Freezer at Catering 105	1/23/2012
96	Power for Existing Baseball Scoreboard	1/23/2012
97	Additional Electrical Power Required at IT Rooms	1/23/2012
98	24" x 20" Supply Duct at Press Box Level (Between Gridlines B.8 and C.2)	1/23/2012
98R	24" x 20" Supply Duct at Press Box Level (Between Gridlines B.8 and C.2) - Revised	1/23/2012
99	CMU Wall Brace Angles at True West Concourse Rooms	1/23/2012
99R	CMU Wall Brace Angles at True West Concourse Rooms - Revised	1/23/2012
100	Metal Joist Panel Assemblies P-1 and S-1 (04E.819)	No Post
101	Revised Joist Hangers at Catering 105 and Maintenance 115	1/23/2012
102	Netting Pole Foundation Light Reinforcing	1/23/2012
103	Revised Locations of Paper Towel/Sanitary Napkin Dispensers	2/1/2012
104	Bulletin 20: Fresh Air Intake and Exhaust Grilles	2/1/2012
105	Attachment of Roof Metal Decking at Concourse Level True West	2/1/2012
106	1/4" x 3/8" Allow and Grease Duct Size	2/1/2012
107	Solid Surface Sill (SS-3) Widths and Locations	2/1/2012
108	Revised Paint Color for Concourse and Spectator Level HM Doors and Frames	3/16/2012
108R	Revised Paint Color for Concourse and Spectator Level HM Doors and Frames - Revised	3/16/2012
109	Location of Type S Light Fixtures at Maintenance 115	3/16/2012
110	Roof Framing Clarification at Catering 105	3/16/2012
111	Additional Data/Power at Hospitality Bar for POS	3/16/2012
112	Revised Type O Light Fixtures at Hallway to Storage 404	3/16/2012
113	Exhaust Hood at Grille 109	3/16/2012
114	Suspended and Hard Hat Ceiling Added at 101, 105, 111, 113	3/16/2012
115	Routing of Water Heater Flue at Maintenance 115	3/16/2012
116	W/ft at Top of CMU Wall at Main Electrical 104 and IT Room 102	3/16/2012
117	Structural Fix for Stair Core #2 Embed/Beam Connection	5/1/2012
118	Data Drop at Storage 102	5/1/2012
119	Additional Data/Power for ATM and Data for Menu Boards	5/1/2012

Bulletin No.	Subject	Posted to As-Built
01	Misc. Architectural, Mechanical, Plumbing, Electrical Changes	6/24/2011
02	Revised Kitchen Table Depth	6/29/2011
03R	Add Sub-Meter for Clubhouse	8/24/2011
04	Delete Flex Storage 117 and Vendor Depot 118, Revise Access Control Gates - VOID	N/A
04R	Vendor Depot Deletion and Restroom 118 Relocation	9/26/2011
04R2	Mechanical/Electrical for Bulletin 04R	9/26/2011
05	Delete Concourse Roof Steel Channels	8/24/2011
06	Commissioner's Box Improvements	9/26/2011
07	Revised Entrance Mat Material	8/7/2011
08	Revised Dimensions of Elevator Equipment Room 104A	8/10/2011
09	Revised Lower Side and Locations	8/24/2011
10	Thickened Concrete Slab Below Shaft Wall	9/7/2011
11	Gyp Board Ceiling Deletion at Maintenance 115	9/26/2011
12	Shaft Wall Support Revision	10/18/2011
13	Paint Color P-1 Revision	10/7/2011
14	Baseball Ramp Edge Protection	11/18/2011
15	Baseball Backstop Support Revision	12/21/2011
16	Gas Piping Revision	3/16/2012
17	Revised Dugout Layout	3/16/2012
18	Soil Surface SS-3 Finish Revision	3/16/2012
20	East Concourse Restroom Ceiling Additions	2/1/2012
21	New Restroom 405 Door Revision	2/1/2012
22	Corner Guard Locations	5/1/2012



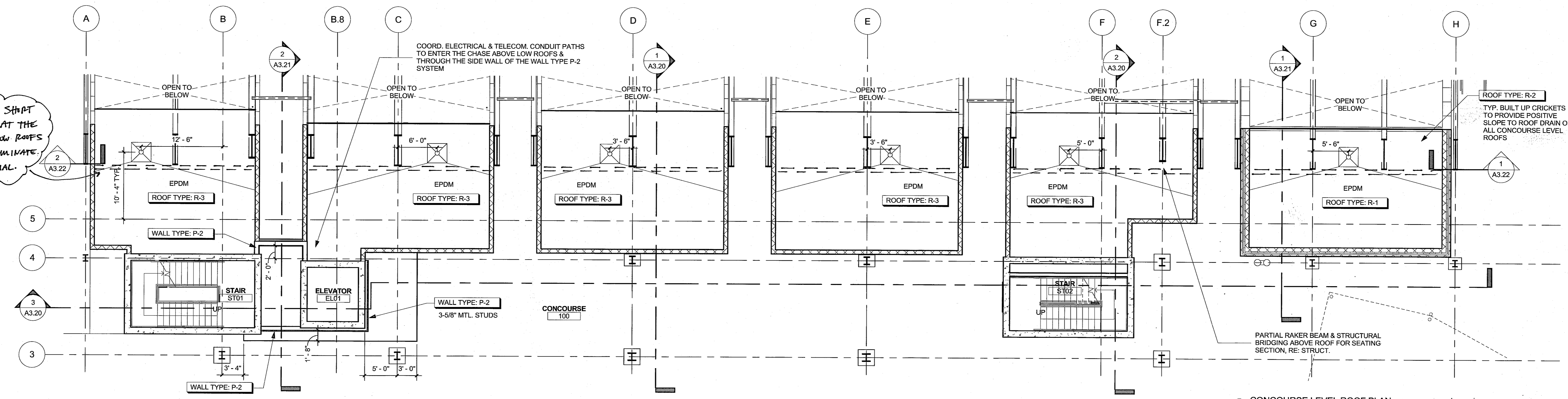
100% CONSTRUCTION DOCUMENTS

MAY 6, 2011

SINK COMBS DETHLEFS  
A Professional Corporation for Architecture

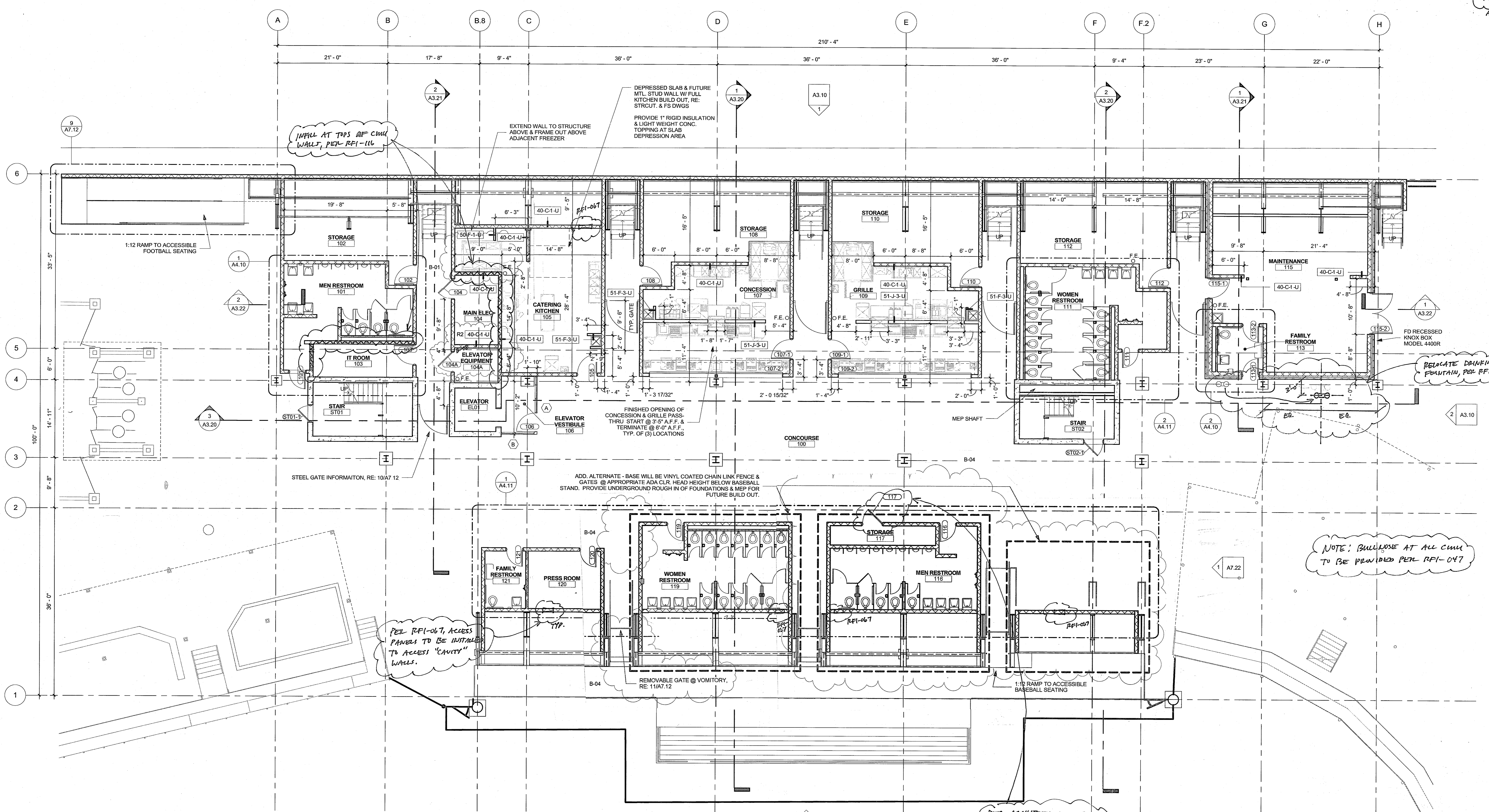
- GENERAL FLOOR PLAN NOTES:**
1. RE: SHEET A3.00 FOR WALL TYPES.
  2. FOR MECHANICAL DUCTS IN CHASES, SEE WALL TYPES FOR TYPE OF CHASE. SEE MECHANICAL DRAWINGS FOR DUCTWORK.
  3. REFER TO ROOM FINISH SCHEDULE FOR ALL FINISHES, IF ANY DISCREPANCY OCCURS VERIFY WITH ARCHITECT.
  4. RE: CODE STUDY AND CODE PLANS FOR SMOKE RESISTANT WALLS AND FIRE RATINGS.
  5. ALL CHANGES IN FLOOR MATERIAL OCCUR FROM THE CENTER LINE OF DOOR IN THE CLOSED POSITION UNLESS INDICATED OTHERWISE.
  6. ALL DIMENSIONS ARE TO CENTER LINE OF COLUMNS, FACE OF CMU AND EDGE OF METAL STUD W/O GYP. BD.
  7. SLOPE ALL WET AREA FLOORS TO DRAINS.
  8. RE: ENLARGED PLANS FOR NOTES AND DIMENSIONS FOR RESTROOMS AND TOILETS.
  9. REFER TO PLUMBING DRAWINGS FOR ALL FLOOR DRAIN LOCATIONS.
  10. CONTRACTOR TO REVIEW ALL SLOPES AND ADVISE IF CURRENT CONFIGURATION NEEDS TO BE MODIFIED.
  11. IMPACT-RESISTANT GYP. BD. IS TO BE USED IN ALL HALLWAYS AND HIGH TRAFFIC AREAS.

PER RFI-070, SHIRT WALLS ADDED AT THE TOP OF THE LOW ROOFS TO BETTER TERMINATE ROOFING MATERIAL.



2 CONCOURSE LEVEL ROOF PLAN  
1/8" = 1'-0"

AWAKE  
RESISTANT  
ADD. 1



INFILL AT TOPS OF CMU WALLS, PER RFI-116

DEPRESSED SLAB & FUTURE MTL. STUD WALL W/ FULL KITCHEN BUILD OUT, RE: STRUCT. & FS DWGS. PROVIDE 1" RIGID INSULATION & LIGHT WEIGHT CONC. TOPPING AT SLAB DEPRESSION AREA.

RELOCATE DRINKING FOUNTAIN, PER RFI-079.

PER RFI-067, ACCESS PANELS TO BE INSTALLED TO ACCESS "CAVITY" WALLS.

NOTE: BUILDOUT AT ALL CMU TO BE PROVIDED PER RFI-047

PER ARCHITECT COMMENT TO SUBMITTAL FILE # 0072, DOOR 117 TO STAIRS AS CLOSE TO 180° AS POSSIBLE. INSTALL FRAME TO ALLOW THIS RANGE OF SWING.

Issues/Revisions:	Date:
SCHEMATIC DESIGN	12/10/11
DESIGN DEVELOPMENT	2/4/11
95% CD SET / PERMIT SET	3/18/11
100% CD SET	5/8/11
APPENDIX 01	5/19/11
BULLETIN 01	6/17/11
BULLETIN 02	8/10/11

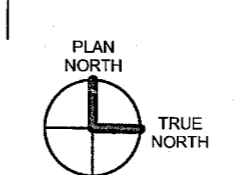
**LINCOLN PARK STADIUM IMPROVEMENTS**  
GRAND JUNCTION, CO

SCD Project No.: 1033

**CONCOURSE PLAN**

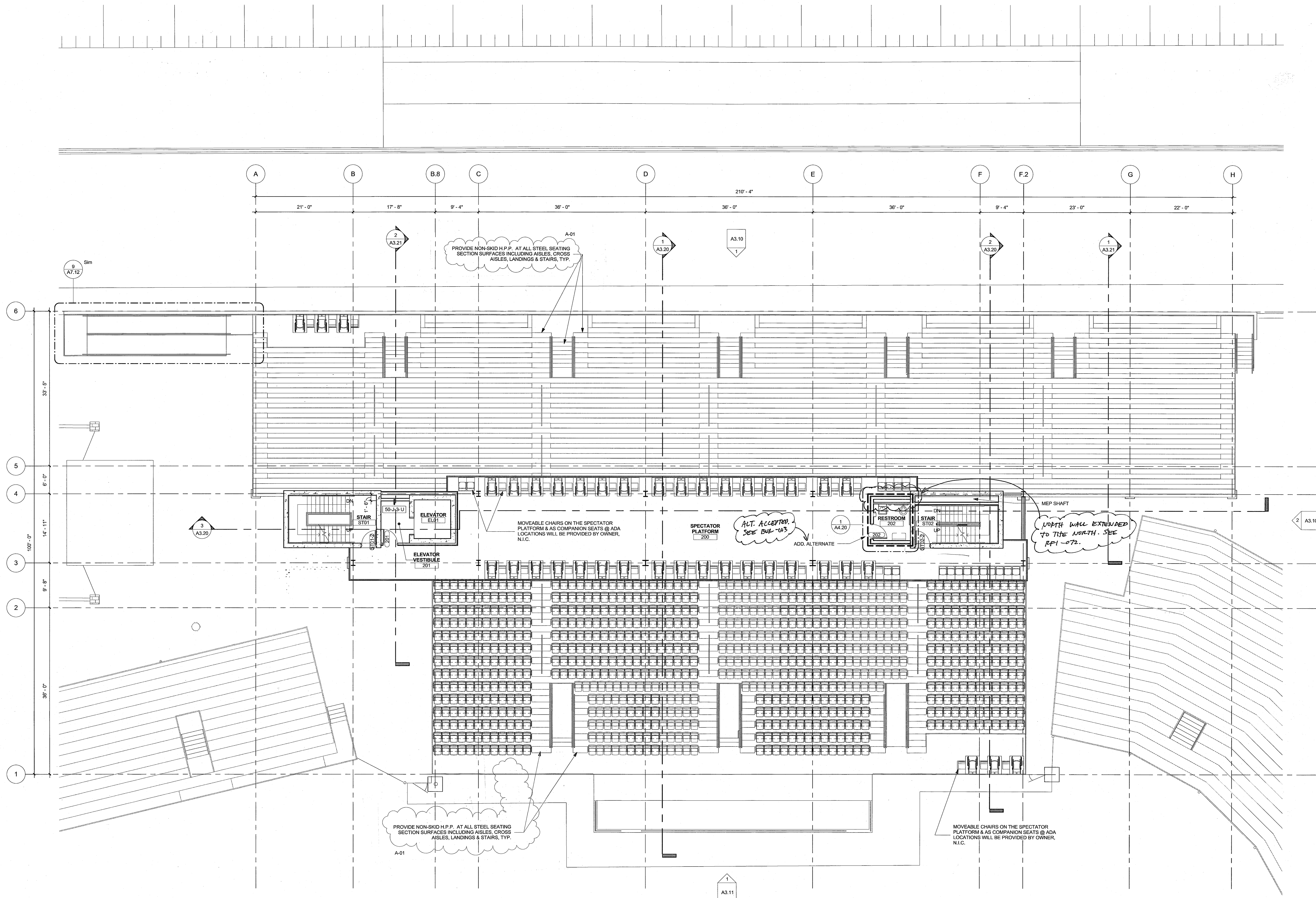
Drawn By:  
Checked By:

**A2.10**



1 CONCOURSE LEVEL PLAN  
1/8" = 1'-0"

- GENERAL FLOOR PLAN NOTES:**
1. RE: SHEET A3.00 FOR WALL TYPES.
  2. FOR MECHANICAL DUCTS IN CHASES, SEE WALL TYPES FOR TYPE OF CHASE. SEE MECHANICAL DRAWINGS FOR DUCTWORK.
  3. REFER TO ROOM FINISH SCHEDULE FOR ALL FINISHES. IF ANY DISCREPANCY OCCURS VERIFY WITH ARCHITECT.
  4. RE: CODE STUDY AND CODE PLANS FOR SMOKE RESISTANT WALLS AND FIRE RATINGS.
  5. ALL CHANGES IN FLOOR MATERIAL OCCUR FROM THE CENTER LINE OF DOOR IN THE CLOSED POSITION UNLESS INDICATED OTHERWISE.
  6. ALL DIMENSIONS ARE TO CENTER LINE OF COLUMNS, FACE OF CMU AND EDGE OF METAL STUD W/ID GYP. BD.
  7. SLOPE ALL WET AREA FLOORS TO DRAINS.
  8. RE: ENLARGED PLANS FOR NOTES AND DIMENSIONS FOR RESTROOMS AND TOILETS.
  9. REFER TO PLUMBING DRAWINGS FOR ALL FLOOR DRAIN LOCATIONS.
  10. CONTRACTOR TO REVIEW ALL SLOPES AND ADVISE IF CURRENT CONFIGURATION NEEDS TO BE MODIFIED.
  11. IMPACT RESISTANT GYP. BD. IS TO BE USED IN ALL HALLWAYS AND HIGH TRAFFIC AREAS.



Issues/Revisions:	Date:
SCHEMATIC DESIGN	12/10/10
DESIGN DEVELOPMENT	2/4/11
95% CD SET / PERMIT SET	3/18/11
100% CD SET	5/6/11

**LINCOLN PARK STADIUM IMPROVEMENTS**  
GRAND JUNCTION, CO

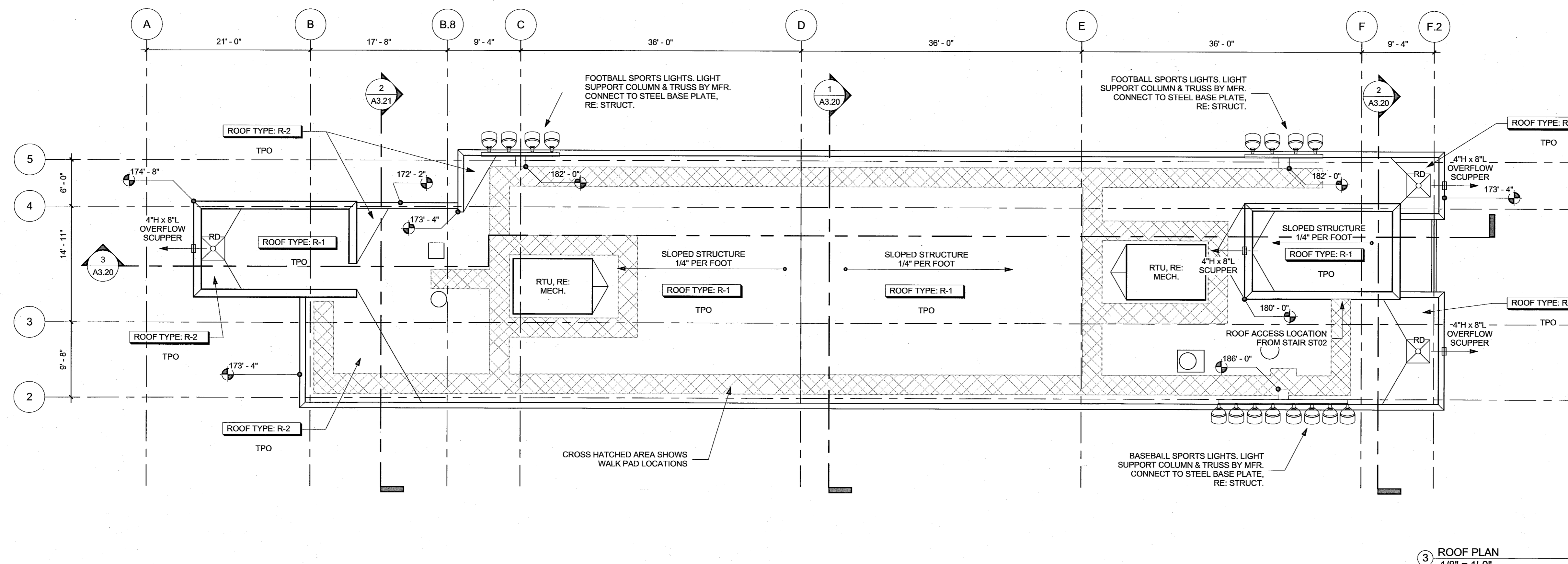
SCD Project No.: 1033

**SPECTATOR PLATFORM PLAN**

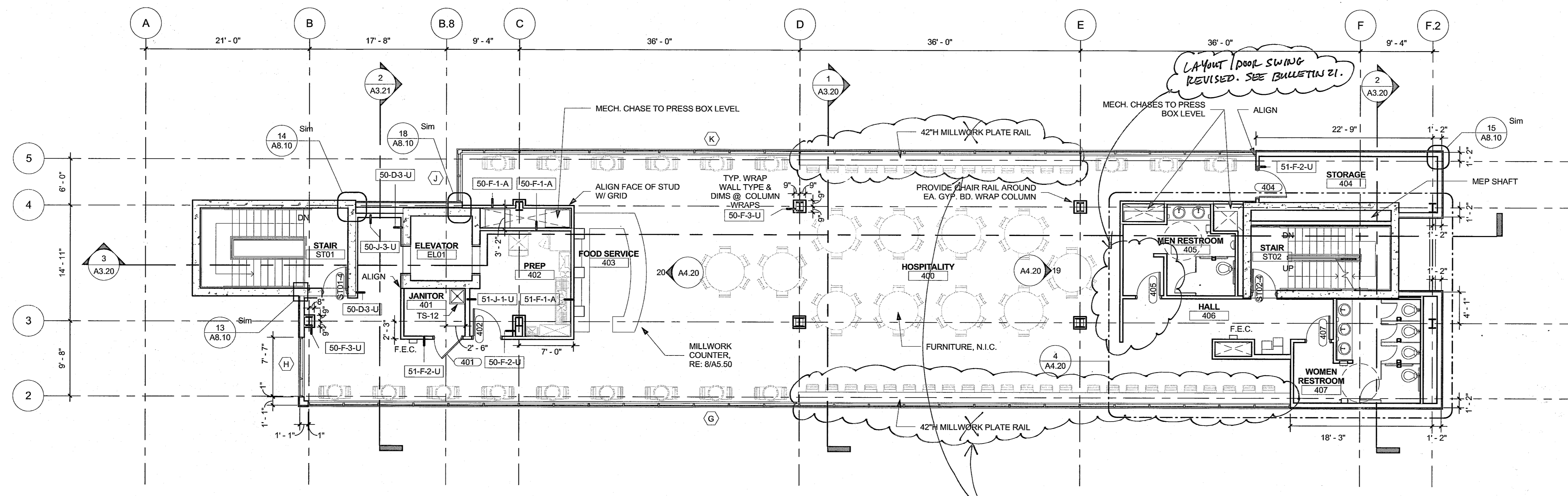
Drawn By:  
Checked By:

**A2.20**

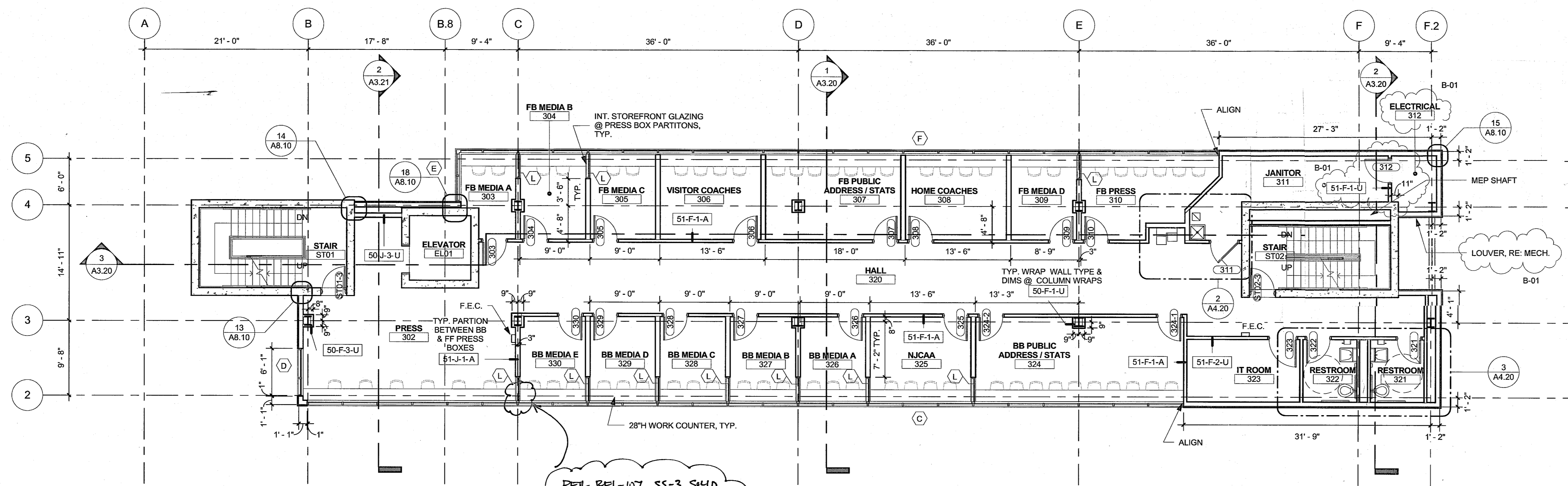
PLAN NORTH  
1 SPECTATOR PLATFORM LEVEL PLAN  
1/8" = 1'-0"



3 ROOF PLAN  
1/8" = 1'-0"



2 HOSPITALITY LEVEL PLAN  
1/8" = 1'-0"



1 PRESS BOX LEVEL PLAN  
1/8" = 1'-0"

**SINK COMBS DETHLEFS**  
A Professional Corporation for Architecture

Copyright © 2010 Sink Combs Dethlefs, P.C.  
475 Lincoln Street, Suite 100, Denver, Colorado 80203  
303.308.0000  
303.308.0022

- GENERAL FLOOR PLAN NOTES:**
1. RE: SHEET A8.00 FOR WALL TYPES.
  2. FOR MECHANICAL DUCTS IN CHASES, SEE WALL TYPES FOR TYPE OF CHASE. SEE MECHANICAL DRAWINGS FOR DUCTWORK.
  3. REFER TO ROOM FINISH SCHEDULE FOR ALL FINISHES. IF ANY DISCREPANCY OCCURS VERIFY WITH ARCHITECT.
  4. RE: CODE STUDY AND CODE PLANS FOR SMOKE RESISTANT WALLS AND FIRE RATINGS.
  5. ALL CHANGES IN FLOOR MATERIAL OCCUR FROM THE CENTER LINE OF DOOR IN THE CLOSED POSITION UNLESS INDICATED OTHERWISE.
  6. ALL DIMENSIONS ARE TO CENTER LINE OF COLUMNS, FACE OF CMU AND EDGE OF METAL STUD TWO GYP. BD.
  7. SLOPE ALL WET AREA FLOORS TO DRAINS.
  8. RE: ENLARGED PLANS FOR NOTES AND DIMENSIONS FOR RESTROOMS AND TOILETS.
  9. REFER TO PLUMBING DRAWINGS FOR ALL FLOOR DRAIN LOCATIONS.
  10. CONTRACTOR TO REVIEW ALL SLOPES AND ADVISE IF CURRENT CONFIGURATION NEEDS TO BE MODIFIED.
  11. IMPACT RESISTANT GYP. BD. IS TO BE USED IN ALL HALLWAYS AND HIGH TRAFFIC AREAS.

- GENERAL ROOF NOTES:**
1. SLOPE ROOF 1/4" PER FOOT MINIMUM. ROOFING CONTRACTOR IS RESPONSIBLE FOR ROOF SLOPE SYSTEM DESIGN FOR 100% POSITIVE SLOPE THROUGHOUT. DRAWINGS INDICATE DESIGN INTENT.
  2. ALL STRUCTURAL ROOF CHECKING IS SLOPED, UNLESS OTHERWISE NOTED ON THE PLAN. SEE STRUCTURAL DRAWINGS FOR TOP OF STEEL (T.O.S.) ELEVATIONS.
  3. CONTRACTOR SHALL CONFIRM TYPE, QUANTITY AND LOCATION OF ROOFING PENETRATIONS PRIOR TO START OF CONSTRUCTION.
  4. PROVIDE 1/8" PER FOOT MINIMUM SLOPE VALLEYS AT ALL CRICKETS AT ALL WALLS, EQUIPMENT, HATCHES, CURBS, ETC.
  5. MECHANICAL EQUIPMENT ON CURB (CURB BY MECH. SUB-CONTRACTOR). COORDINATE EXACT SIZE AND LOCATION OF ROOF PENETRATION WITH MECHANICAL SUB-CONTRACTOR. PROVIDE ANGLE FRAME ON ALL SIDES OF OPENING. SEE STRUCTURAL DRAWINGS FOR STEEL ANGLE FRAME DETAILS.
  6. ALL ROOF TOP MECHANICAL EQUIPMENT AND VENTS TO BE PAINTED.
  7. PROVIDE WALK PADS FROM ACCESS DOOR TO ALL MECH. EQUIPMENT AND PARAPET EDGES. WALK PADS TO BE PLACED COMPLETELY AROUND MECH. UNITS.
  8. INSTALL ROOF SCUPPER & OVERFLOW SCUPPERS PER SMACNA FIGURE 1-30A.

Issues/Revisions:	Date:
SCHEMATIC DESIGN	12/10/10
DESIGN DEVELOPMENT	2/4/11
95% CD SET / PERMIT SET	3/18/11
100% CD SET	5/6/11
BULLETIN 01	6/17/11

**LINCOLN PARK STADIUM IMPROVEMENTS**  
GRAND JUNCTION, CO

SCD Project No.: 1033

**PRESS BOX, HOSPITALITY & ROOF PLANS**

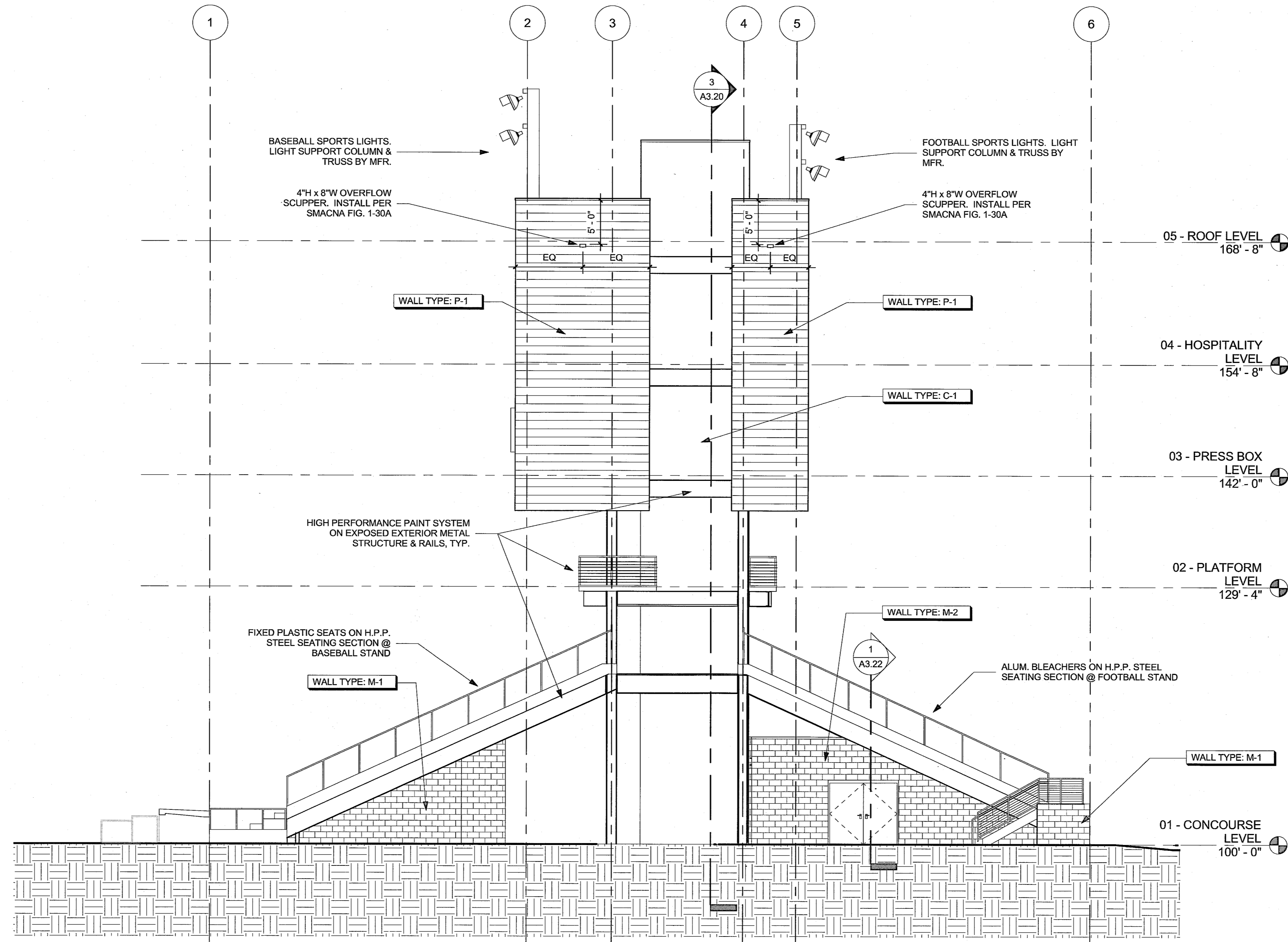
Drawn By:  
Checked By:

**A2.30**

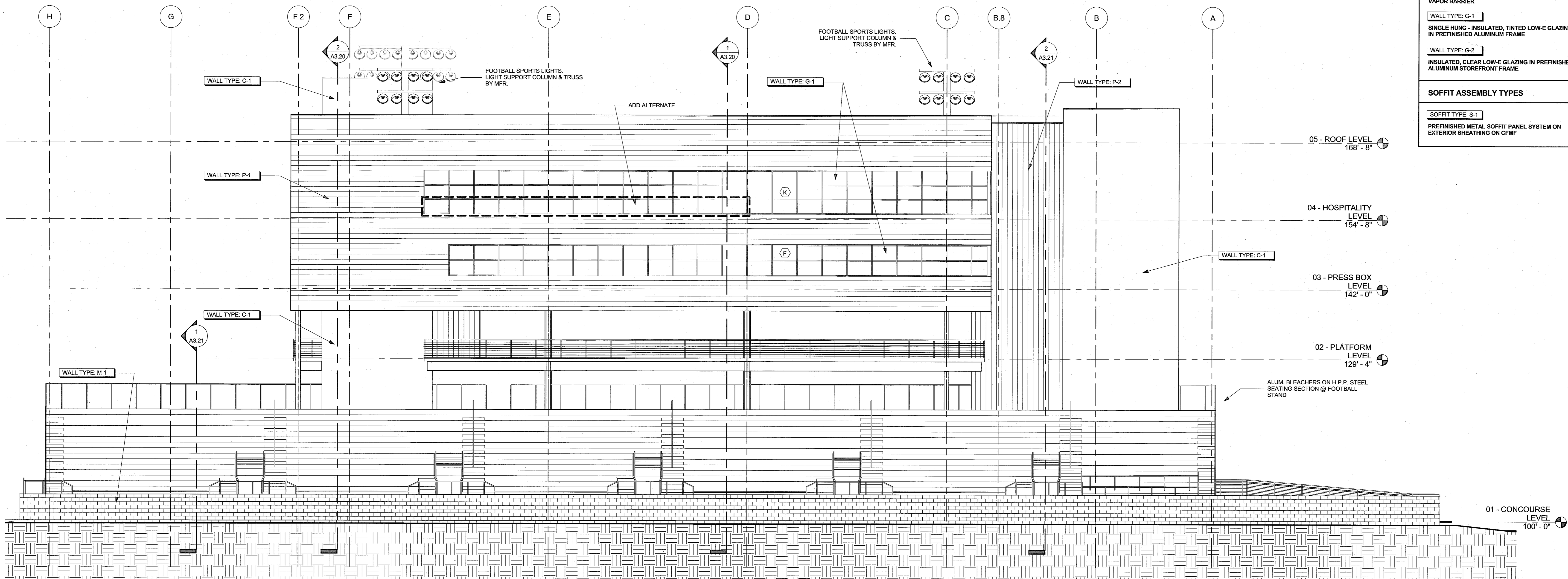
PER RPI-107, SS-3 SH40 SURFACE SILLS ADDED AT SECTIONS OF SILL AT TYPE "L" WINDOWS. TYP. THROUGHOUT PRESS BOX LEVEL.

LA VANT POOL SWING REVISED. SEE BULLETIN 21.

PLATE RAILS DELETED PER BUR-012



2 PLAN EAST ELEVATION  
1/8" = 1'-0"



1 PLAN NORTH ELEVATION  
1/8" = 1'-0"

**BUILDING ASSEMBLY TYPES**  
REFER TO THE SPECIFICATION FOR DETAILED INFORMATION ABOUT EACH SYSTEM & EACH SYSTEM COMPONENT

**FLOOR ASSEMBLY TYPES**

**FLOOR TYPE: F-1**  
CAST-IN-PLACE CONCRETE SLAB OVER VAPOR BARRIER OVER GRAVEL FILL. RE: FINISH SCHEDULE & PLANS FOR FLOORING MATERIAL.

**FLOOR TYPE: F-2**  
CONCRETE & METAL DECK COMPOSITE FLOOR SYSTEM ON STRUCTURAL STEEL. PAINT METAL DECK EXPOSED TO PUBLIC VIEW. RE: FINISH SCHEDULE & PLANS FOR FLOORING MATERIAL.

**ROOF ASSEMBLY TYPES**  
R-30 MINIMUM FOR ROOFS AT CONDITIONED SPACES

GENERAL NOTE: ALL FLASHING, FASTENERS, MEMBRANE TRANSITIONS & TERMINATION, ETC. SHALL COMPLY W/ APPROVED MANUFACTURER DETAILS

**ROOF TYPE: R-1**  
FULLY ADHERED MEMBRANE ROOF ON COVER BOARD OVER POLYISOCYANURATE INSULATION ON METAL ROOF DECK.

**ROOF TYPE: R-2**  
FULLY ADHERED MEMBRANE ROOF ON COVER BOARD OVER TAPERED, BUILT UP POLYISOCYANURATE INSULATION CRICKETS ON METAL ROOF DECK.

**ROOF TYPE: R-3**  
FULLY ADHERED MEMBRANE ROOF ON COVER BOARD OVER METAL ROOF DECK.

\*APPLIES AT SEASONAL, UNCONDITIONED USE SPACES

**ROOF TYPE: R-4**  
WATER REPELLANT ON CONCRETE ROOF SYSTEM

**WALL ASSEMBLY TYPES**  
R-19 MINIMUM FOR WALLS AT CONDITIONED SPACES

GENERAL NOTE: ALL FLASHING, FASTENERS, MEMBRANE TRANSITIONS & TERMINATION, ETC. SHALL COMPLY W/ APPROVED MANUFACTURER DETAILS

**WALL TYPE: C-1**  
C.I.P. CONCRETE W/ ARCHITECTURAL EXPOSED FINISH

**WALL TYPE: M-1**  
INTEGRAL COLOR GROUND FACE CMU (8" NOMINAL U.N.O.) WITH ACCENT BANDS

**WALL TYPE: M-2**  
INTEGRAL COLOR GROUND FACE CMU (4" NOMINAL U.N.O.) WITH ACCENT BANDS OVER AIR SPACE OVER 2-1/2" POLYISOCYANURATE INSULATION ON CMU WALL

**WALL TYPE: P-1**  
HORIZONTALLY ORIENTED PREFINISHED METAL WALL PANEL SYSTEM OVER WEATHER BARRIER ON EXTERIOR SHEATHING OVER CFMF (6" U.N.O.). FILL STUD CAVITY W/ BATT INSULATION & INTERIOR FACE VAPOR BARRIER

**WALL TYPE: P-2**  
VERTICALLY ORIENTED PREFINISHED METAL WALL PANEL SYSTEM OVER WEATHER BARRIER ON EXTERIOR SHEATHING OVER CFMF (6" U.N.O.). FILL STUD CAVITY W/ BATT INSULATION & INTERIOR FACE VAPOR BARRIER

**WALL TYPE: G-1**  
SINGLE HUNG - INSULATED, TINTED LOW-E GLAZING IN PREFINISHED ALUMINUM FRAME

**WALL TYPE: G-2**  
INSULATED, CLEAR LOW-E GLAZING IN PREFINISHED ALUMINUM STOREFRONT FRAME

**SOFFIT ASSEMBLY TYPES**

**SOFFIT TYPE: S-1**  
PREFINISHED METAL SOFFIT PANEL SYSTEM ON EXTERIOR SHEATHING ON CFMF

ALL INFORMATION APPEARING HEREIN SHALL NOT BE REPRODUCED, DISSEMINATED, OR OTHERWISE USED WITHOUT THE WRITTEN CONSENT OF SH&K CONSULTANTS.

**SINK COMBS DETHLEFS**  
A Professional Corporation for Architecture

Copyright by  
Sink Combs  
Dethlefs, P.C.  
475 Lincoln Street,  
Suite 100  
Denver, Colorado 80202  
303.368.0200  
FAX 303.622.0222

**GENERAL ELEVATION NOTES:**

1. REFER TO CIVIL DRAWINGS FOR GRADING ELEVATIONS.
2. REFER TO STRUCTURAL FOR ALL STRUCTURAL STEEL ELEVATIONS.
3. PROVIDE STEEL GIRTS AT OPENINGS WHERE REQ., RE: STRUCTURAL DRAWINGS.
4. REFER TO PLANS FOR PARTITION TYPES
5. REFER TO A3.80 FOR ALL FRAME TYPES
6. REFER TO A3.80 FOR ALL GLAZING ELEVATIONS AND SIZES
7. CONTRACTOR TO VERIFY LOCATION OF ALL TEMPERED GLAZING PER APPLICABLE CODES AND NOTES ON A3.80.
8. PAINT ALL EXPOSED STEEL - DECK, JOISTS, BEAMS, ANGLES, LINTELS, ETC.
9. ALL EXTERIOR PAINTED METAL TO RECEIVE HIGH PERFORMANCE PAINT
10. REFER TO ROOM FINISH SCHEDULE FOR ALL INTERIOR FLOORING & WALL MATERIALS
11. REFER TO ASSEMBLY NOTES & SPECS FOR MASONRY TYPE DETAILS
12. FOR FOOTBALL SPORTS LIGHT POLES MOUNTED ON TOP OF BUILDING LIGHT MFR. TO VERIFY BASE PLATE HEIGHT TO COORD. UNIFORM T.O. POLE ELEVATION.

Issues/Revisions:	Date:
SCHEMATIC DESIGN	12/10/10
DESIGN DEVELOPMENT	2/4/11
95% CD SET / PERMIT SET	3/18/11
100% CD SET	5/6/11

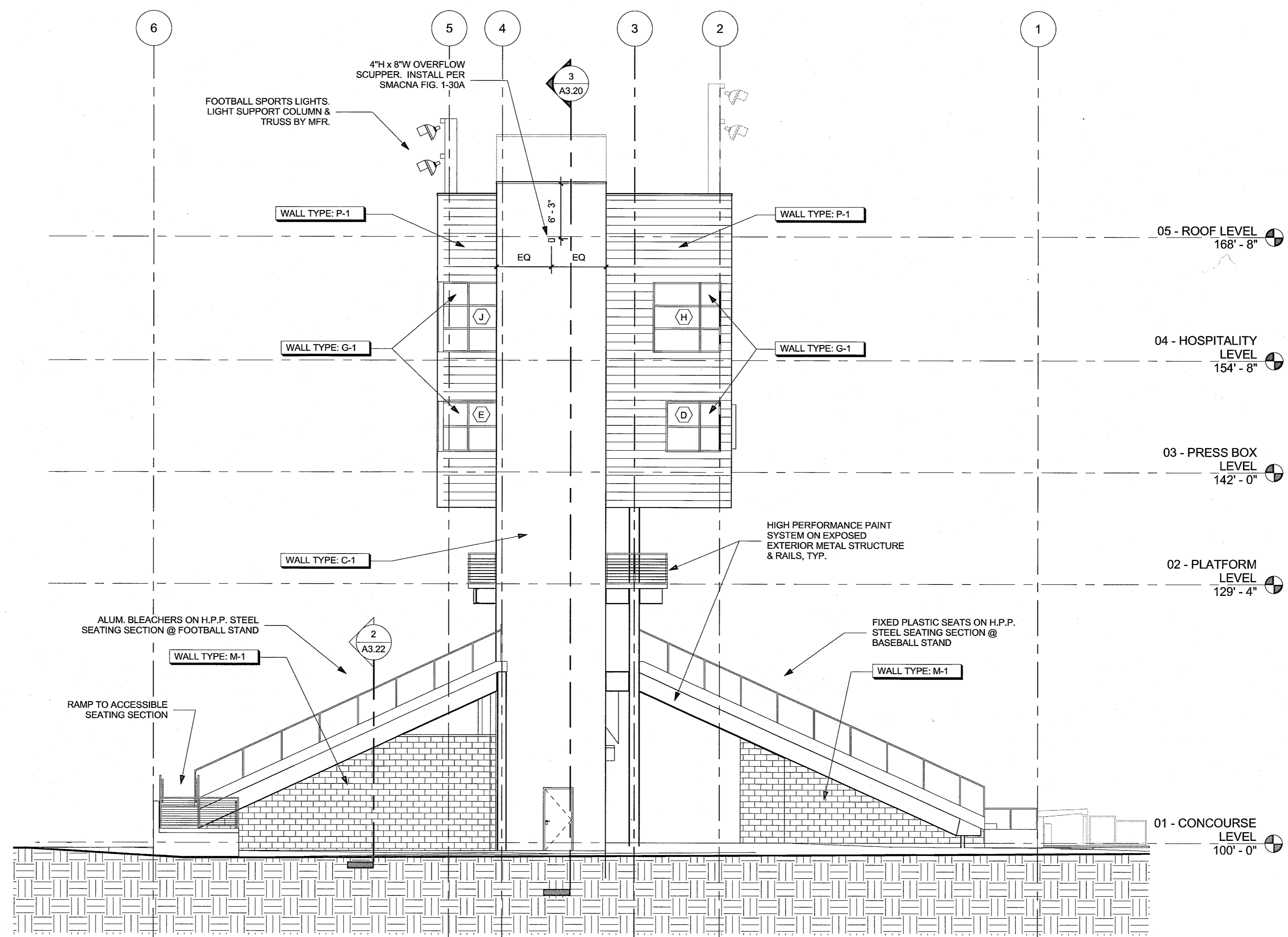
**LINCOLN PARK STADIUM IMPROVEMENTS**  
GRAND JUNCTION, CO

SCD Project No.: 1033

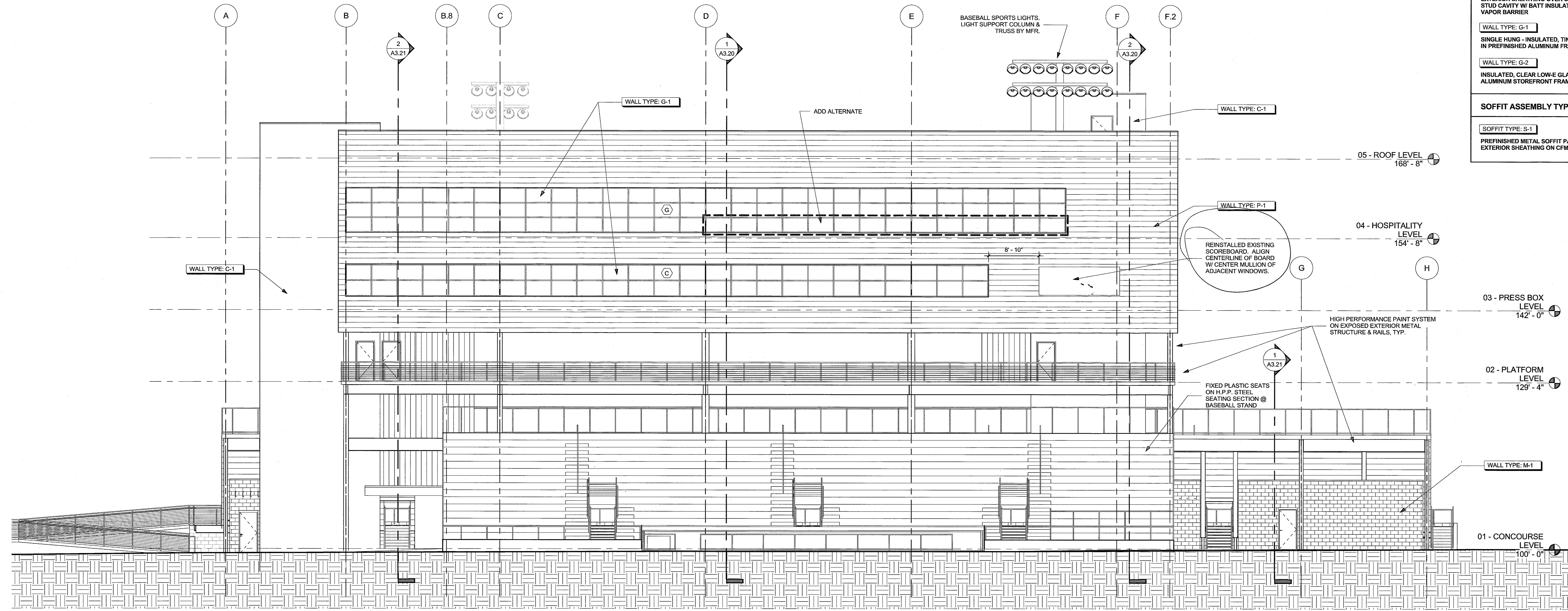
**EXTERIOR ELEVATIONS**

Drawn By:  
Checked By:

**A3.10**



2 PLAN WEST ELEVATION  
1/8" = 1'-0"



1 PLAN SOUTH ELEVATION  
1/8" = 1'-0"

BUILDING ASSEMBLY TYPES	
REFER TO THE SPECIFICATION FOR DETAILED INFORMATION ABOUT EACH SYSTEM & EACH SYSTEM COMPONENT	
FLOOR ASSEMBLY TYPES	
FLOOR TYPE: F-1	CAST-IN-PLACE CONCRETE SLAB OVER VAPOR BARRIER OVER GRAVEL FILL. RE: FINISH SCHEDULE & PLANS FOR FLOORING MATERIAL
FLOOR TYPE: F-2	CONCRETE & METAL DECK COMPOSITE FLOOR SYSTEM ON STRUCTURAL STEEL. PAINT METAL DECK EXPOSED TO PUBLIC VIEW. RE: FINISH SCHEDULE & PLANS FOR FLOORING MATERIAL
ROOF ASSEMBLY TYPES	
R-30 MINIMUM FOR ROOFS AT CONDITIONED SPACES	
GENERAL NOTE: ALL FLASHING, FASTENERS, MEMBRANE TRANSITIONS & TERMINATION, ETC. SHALL COMPLY W/ APPROVED MANUFACTURER DETAILS	
ROOF TYPE: R-1	FULLY ADHERED MEMBRANE ROOF ON COVER BOARD OVER POLYISOCYANURATE INSULATION ON METAL ROOF DECK.
ROOF TYPE: R-2	FULLY ADHERED MEMBRANE ROOF ON COVER BOARD OVER TAPERED, BUILT UP POLYISOCYANURATE INSULATION CRICKETS ON METAL ROOF DECK.
ROOF TYPE: R-3	FULLY ADHERED MEMBRANE ROOF ON COVER BOARD OVER METAL ROOF DECK.
*APPLIES AT SEASONAL, UNCONDITIONED USE SPACES	
ROOF TYPE: R-4	WATER REPELLANT ON CONCRETE ROOF SYSTEM
WALL ASSEMBLY TYPES	
R-19 MINIMUM FOR WALLS AT CONDITIONED SPACES	
GENERAL NOTE: ALL FLASHING, FASTENERS, MEMBRANE TRANSITIONS & TERMINATION, ETC. SHALL COMPLY W/ APPROVED MANUFACTURER DETAILS	
WALL TYPE: C-1	C.I.P. CONCRETE W/ ARCHITECTURAL EXPOSED FINISH
WALL TYPE: M-1	INTEGRAL COLOR GROUND FACE CMU (8" NOMINAL U.N.D.) WITH ACCENT BANDS
WALL TYPE: M-2	INTEGRAL COLOR GROUND FACE CMU (8" NOMINAL U.N.D.) WITH ACCENT BANDS OVER AIR SPACE OVER: 2-1/2" POLYISOCYANURATE INSULATION ON CMU WALL.
WALL TYPE: P-1	HORIZONTALLY ORIENTED PREFINISHED METAL WALL PANEL SYSTEM OVER WEATHER BARRIER ON EXTERIOR SHEATHING OVER CFMF (6" U.N.D.). FILL STUD CAVITY W/ BATT INSULATION & INTERIOR FACE VAPOR BARRIER
WALL TYPE: P-2	VERTICALLY ORIENTED PREFINISHED METAL WALL PANEL SYSTEM OVER WEATHER BARRIER ON EXTERIOR SHEATHING OVER CFMF (6" U.N.D.). FILL STUD CAVITY W/ BATT INSULATION & INTERIOR FACE VAPOR BARRIER
WALL TYPE: G-1	SINGLE HUNG - INSULATED, TINTED LOW-E GLAZING IN PREFINISHED ALUMINUM FRAME
WALL TYPE: G-2	INSULATED, CLEAR LOW-E GLAZING IN PREFINISHED ALUMINUM STOREFRONT FRAME
SOFFIT ASSEMBLY TYPES	
SOFFIT TYPE: S-1	PREFINISHED METAL SOFFIT PANEL SYSTEM ON EXTERIOR SHEATHING ON CFMF

**SINK COMBS DETHLEFS**  
A Professional Corporation for Architecture  
Copyright by Sink Combs Dethlefs, P.C. 475 Lincoln Street, Suite 100, Denver, Colorado 80203 303.308.0300 FAX 303.622.0222

**GENERAL ELEVATION NOTES:**  
1. REFER TO CIVIL DRAWINGS FOR GRADING ELEVATIONS.  
2. REFER TO STRUCTURAL FOR ALL STRUCTURAL STEEL ELEVATIONS.  
3. PROVIDE STEEL GIRTS AT OPENINGS WHERE REQ., RE: STRUCTURAL DRAWINGS.  
4. REFER TO PLANS FOR PARTITION TYPES  
5. REFER TO A9.80 FOR ALL FRAME TYPES  
6. REFER TO A9.80 FOR ALL GLAZING ELEVATIONS AND SIZES  
7. CONTRACTOR TO VERIFY LOCATION OF ALL TEMPERED GLAZING PER APPLICABLE CODES AND NOTES ON A9.80  
8. PAINT ALL EXPOSED STEEL - DECK, JOISTS, BEAMS, ANGLES, LINTELS, ETC.  
9. ALL EXTERIOR PAINTED METAL TO RECEIVE HIGH PERFORMANCE PAINT  
10. REFER TO ROOM FINISH SCHEDULE FOR ALL INTERIOR FLOORING & WALL MATERIALS  
11. REFER TO ASSEMBLY NOTES & SPECS FOR MASONRY TYPE DETAILS  
12. FOR FOOTBALL SPORTS LIGHT POLES MOUNTED ON TOP OF BUILDING LIGHT MFR. TO VERIFY BASE PLATE HEIGHT TO COORD. UNIFORM T.O. POLE ELEVATION.

Issues/Revisions:	Date:
SCHEMATIC DESIGN	12/10/10
DESIGN DEVELOPMENT	2/4/11
95% CD SET / PERMIT SET	3/18/11
100% CD SET	5/6/11

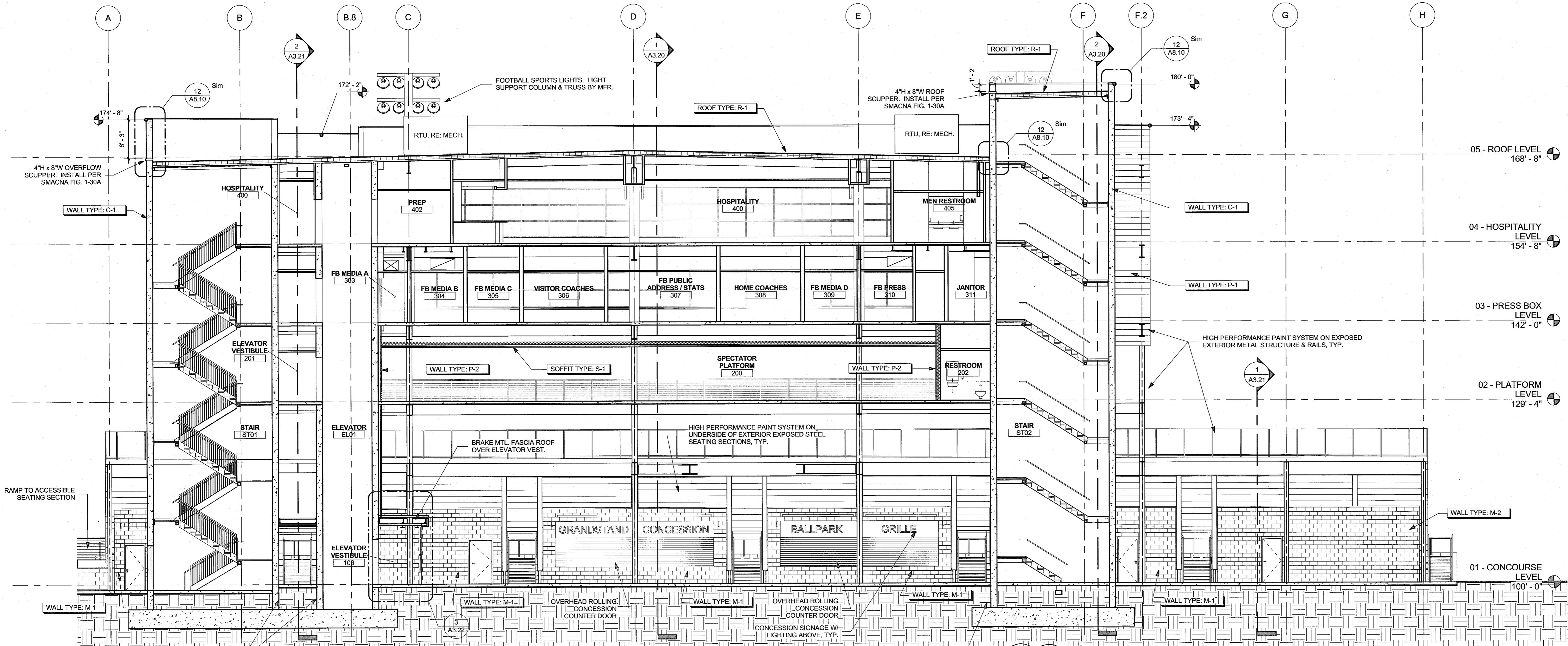
**LINCOLN PARK STADIUM IMPROVEMENTS**  
GRAND JUNCTION, CO

SCD Project No.: 1033

**EXTERIOR ELEVATIONS**

Drawn By:  
Checked By:

**A3.11**



**BUILDING ASSEMBLY TYPES**  
REFER TO THE SPECIFICATION FOR DETAILED INFORMATION ABOUT EACH SYSTEM & EACH SYSTEM COMPONENT

**FLOOR ASSEMBLY TYPES**

**FLOOR TYPE: F-1**  
CAST-IN-PLACE CONCRETE SLAB OVER VAPOR BARRIER OVER GRAVEL FILL. RE: FINISH SCHEDULE & PLANS FOR FLOORING MATERIAL.

**FLOOR TYPE: F-2**  
CONCRETE & METAL DECK COMPOSITE FLOOR SYSTEM ON STRUCTURAL STEEL. PAINT METAL DECK EXPOSED TO PUBLIC VIEW. RE: FINISH SCHEDULE & PLANS FOR FLOORING MATERIAL.

**ROOF ASSEMBLY TYPES**

R-30 MINIMUM FOR ROOFS AT CONDITIONED SPACES

GENERAL NOTE: ALL FLASHING, FASTENERS, MEMBRANE TRANSITIONS & TERMINATION, ETC. SHALL COMPLY W/ APPROVED MANUFACTURER DETAILS

**ROOF TYPE: R-1**  
FULLY ADHERED MEMBRANE ROOF ON COVER BOARD OVER POLYISOCYANURATE INSULATION ON METAL ROOF DECK.

**ROOF TYPE: R-2**  
FULLY ADHERED MEMBRANE ROOF ON COVER BOARD OVER TAPERED, BUILT UP POLYISOCYANURATE INSULATION CRICKETS ON METAL ROOF DECK.

**ROOF TYPE: R-3**  
FULLY ADHERED MEMBRANE ROOF ON COVER BOARD OVER METAL ROOF DECK.

**ROOF TYPE: R-4**  
WATER REPELLANT ON CONCRETE ROOF SYSTEM

**WALL ASSEMBLY TYPES**

R-19 MINIMUM FOR WALLS AT CONDITIONED SPACES

GENERAL NOTE: ALL FLASHING, FASTENERS, MEMBRANE TRANSITIONS & TERMINATION, ETC. SHALL COMPLY W/ APPROVED MANUFACTURER DETAILS

**WALL TYPE: C-1**  
C.I.P. CONCRETE W/ ARCHITECTURAL EXPOSED FINISH

**WALL TYPE: M-1**  
INTEGRAL COLOR GROUND FACE CMU (6" NOMINAL U.N.O.) WITH ACCENT BANDS

**WALL TYPE: M-2**  
INTEGRAL COLOR GROUND FACE CMU (6" NOMINAL U.N.O.) WITH ACCENT BANDS OVER AIR SPACE OVER 2" POLYISOCYANURATE INSULATION ON CMU WALL

**WALL TYPE: P-1**  
HORIZONTALLY ORIENTED PREFINISHED METAL WALL PANEL SYSTEM OVER WEATHER BARRIER ON EXTERIOR SHEATHING OVER CFMF (6" U.N.O.). FILL STUD CAVITY W/ BATT INSULATION & INTERIOR FACE VAPOR BARRIER

**WALL TYPE: P-2**  
VERTICALLY ORIENTED PREFINISHED METAL WALL PANEL SYSTEM OVER WEATHER BARRIER ON EXTERIOR SHEATHING OVER CFMF (6" U.N.O.). FILL STUD CAVITY W/ BATT INSULATION & INTERIOR FACE VAPOR BARRIER

**WALL TYPE: G-1**  
SINGLE HUNG - INSULATED, TINTED LOW-E GLAZING IN PREFINISHED ALUMINUM FRAME

**WALL TYPE: G-2**  
INSULATED, CLEAR LOW-E GLAZING IN PREFINISHED ALUMINUM STOREFRONT FRAME

**SOFFIT ASSEMBLY TYPES**

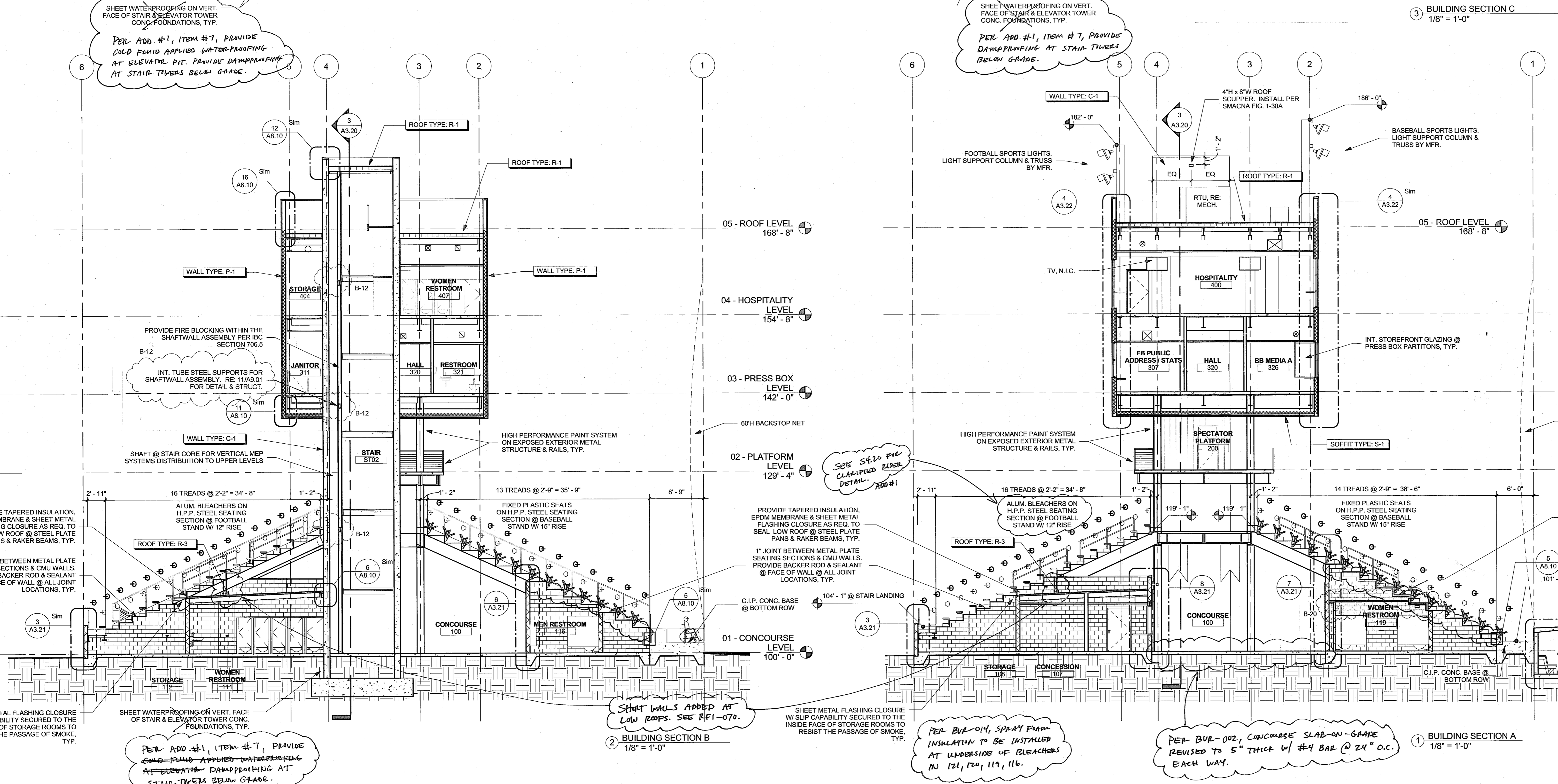
**SOFFIT TYPE: S-1**  
PREFINISHED METAL SOFFIT PANEL SYSTEM ON EXTERIOR SHEATHING ON CFMF

**SINK COMBS DETHLEFS**  
A Professional Corporation for Architecture

Copyright by Sink Combs Dethlefs, P.C. 475 Lincoln Street, Suite 100 Denver, Colorado 80202 303.338.0700 FAX 303.328.1222

**GENERAL ELEVATION NOTES:**

- REFER TO CIVIL DRAWINGS FOR GRADING ELEVATIONS.
- REFER TO STRUCTURAL FOR ALL STRUCTURAL STEEL ELEVATIONS.
- PROVIDE STEEL GIRTS AT OPENINGS WHERE REQ. RE: STRUCTURAL DRAWINGS.
- REFER TO PLANS FOR PARTITION TYPES
- REFER TO A3.80 FOR ALL GLAZING ELEVATIONS AND SIZES
- CONTRACTOR TO VERIFY LOCATION OF ALL TEMPERED GLAZING PER APPLICABLE CODES AND NOTES ON A3.80
- PAINT ALL EXPOSED STEEL - DECK, JOISTS, BEAMS, ANGLES, LINTELS, ETC.
- ALL EXTERIOR PAINTED METAL TO RECEIVE HIGH PERFORMANCE PAINT
- REFER TO ROOM FINISH SCHEDULE FOR ALL INTERIOR FLOORING & WALL MATERIALS
- REFER TO ASSEMBLY NOTES & SPECS FOR MASONRY TYPE DETAILS
- FOR FOOTBALL SPORTS LIGHT POLES MOUNTED ON TOP OF BUILDING LIGHT MFR. TO VERIFY BASE PLATE HEIGHT TO COORD. UNIFORM T.O. POLE ELEVATION.



**Issues/Revisions:**

Issue/Revision	Date
SCHEMATIC DESIGN	12/10/10
DESIGN DEVELOPMENT	2/4/11
95% CD SET / PERMIT SET	3/18/11
100% CD SET	5/6/11
ADDENDUM 01	5/19/11

**04 - HOSPITALITY LEVEL 154'-8"**

**03 - PRESS BOX LEVEL 142'-0"**

**02 - PLATFORM LEVEL 129'-4"**

**01 - CONCOURSE LEVEL 100'-0"**

**LINCOLN PARK STADIUM IMPROVEMENTS**  
GRAND JUNCTION, CO

SCD Project No.: 1033

**BUILDING SECTIONS**

Drawn By:  
Checked By:

**A3.20**