

To access the Agenda and Backup Materials electronically, go to [www.gjcity.org](http://www.gjcity.org)



## Forestry Advisory Board Agenda

**Virtual Meeting – contact Allison Little (254-3861) for meeting details**

**March 11, 2021**

**8:30 AM**

### Call to Order

### Approval of Minutes

Approve Minutes of February 4 Forestry Board Meeting

### Forestry Updates

- a. October 2020 storm and tree damage recover - \$26K
- b. Canopy assessment with Planit GEO
  - i. Tree canopy quote and public facing webpage: <https://pg-cloud.com/t3p/>
  - ii. Canopy services fact sheet example
- c. Winter tree removals - 128 trees removed / ~115 pending (smaller diameter trees)
  - i. 1969 total DBH inches (164 feet) of trees removed
    1. 985 two inch caliper trees
- d. On-call contract for tree pruning services (attachment)
  - i. 25 - 32" trees = \$60 per inch / 1969 inches = \$118K
- e. Contact from Town of Paonia Tree Board
- F. Hiring new Urban Forestry Intern ~ closing 3/14/21

### New Business

If you have questions please contact Chair, Susan Carter at 244-1850 or Robert Davis, City Forester at 254-3825.

- a. Tree Service: Requesting consideration for ISA certified tree working qualification
  - i. Feedback from CAO and Park Superintendent
  
- b. Arbor Day 2021 - Proclamation set for Saturday April 24
  - i. Kick off for seedling distribution Thursday 4/5/2021
    - 1. Residential deliveries Tuesday 4/20/21 through Friday 4/23/21 (volunteers needed)
      - a. 400 seedlings on order (pecan, bur oak, chinkapin oak, Swedish whitebeam and European larch)
  
  - ii. Arbor week video series (topic review) 4/19/21 through 4/23/21
    - 1. To be filmed week of April 5
    - 2. Topic adjustments?
      - a. Lincoln Park tree walk story map
  
  - iii. School plantings
  
  - iv. Xcel foundation volunteer planting
  
  - v. Core GJ canvassing (review flyer)

Promotion to Save our Trees from Unintended Circumstances (conversion to xeriscape, drought, improper watering), etc.

### **Public Comments**

### **Adjournment**

### **Next Meeting Date**

Thursday, April 1, 2020 ~ 8:30 am





## *Grand Junction Forestry Advisory Board Minutes*

*February 4, 2021  
held Virtually*

**Meeting called to Order** by Mollie Higginbotham, at 8:37 AM.

### Roll Call

Board Members Present: Bennett Boeschstein  
Mollie Higginbotham  
Kamie Long  
Paul Morency  
Vince Urbina  
Susan Carter

Absent Board Members: Tom Ziola

Parks & Recreation Staff Present: Rob Davis, City Forester & Open Space Supervisor  
Ciara DePinto, Senior Administrative Assistant

**Approve Minutes** for January 7 Forestry Advisory Board Meeting.

Paul Morency made a motion to approve the minutes of the January 7 meeting. The motion was seconded by Mollie Higginbotham and approved unanimously.

### **Forestry Updates**

- a) Aquaponics Presentation
  - Rob shared that he will be presenting on the forestry division's aquaponics system at the Tree City USA conference on February 17 and February 18, 2021. He mentioned how it is great to be a part of this conference where there are lots of attendees.
- b) 2020 Annual Report
  - Rob has been tracking the statistics behind the forestry's yearly work. In 2020, the forestry division managed 9,618 trees, Jamie Boda, the City's Plant Health Specialist, treated 2,053 trees, and the division saw a record-breaking number of tree work requests. Contracted services were also up due to the winter storm in October 2020.
  - Vince commented on the importance of tracking how fast Grand Junction is growing compared to the number of tree services the City has. In response, Bennett shared how the City's Comprehensive Plan shows the City growing at a 1-2% annual rate.
- c) Winter Tree Removals
  - The forestry division is projected to remove 235 trees this winter.

- Rob spoke to the difference between removing trees and planting trees. Even though the division may plant more trees than they remove, the City still is at a deficit in trees since tree removals are typically larger trees where newly planted trees are small.
  - Rob is also tracking areas in the City with no water landscapes and comparing this to tree deaths.
- d) On-Call Contract for Tree Pruning Services
- Rob would like to start an on-call tree pruning service to help with pruning, stump grinding, and removals. Having contracts could help residents keep their dying trees around a little longer.
- e) Spring Tree Orders
- Rob gave an update on the forestry division's spring tree orders. Rob has ordered a mix of bareroot trees, containerized trees, and seedlings. He has \$5,000 worth of trees for Westlake Park and is hoping to receive a \$4,000 grant from the Excel Foundation.
- f) New Seasonal Positions Starting Early
- The forestry division started interviews for seasonal positions in January 2021. Rob hopes to have two seasonal employees starting in the next week.

**New Business:**

**CAO Input on Request for Reviews**

- Many contract tree services have not taken the CAO or have not passed the test to become an ISA certified arborist. Due to this, the City of Grand Junction may not have many contracted tree services in 2021.
- Rob mentioned that parks and recreation has an online training service open to any tree service provider.

**Arbor Day 2021**

- The 2021 Southwest Arbor Fest has been cancelled due to the pandemic.
- Parks and recreation has plans to deliver seedlings to residents just like 2020 and adding an educational piece to the celebration so residents understand how to take care of their seedlings.
- April 17, 2021 will be the start of the Arbor Day celebration.

**Public Comments:** No Public Comments

**Adjourn:** The meeting adjourned by acclamation at 9:37 AM.

**Next Forestry Advisory Board Meeting:** Thursday, March 11, 2021 at 8:30 AM.

Respectfully Submitted,  
Ciara DePinto, Senior Administrative Assistant

# PROJECT PRICING

The following options are available to provide tree canopy data and interactive web mapping tools to the City of Grand Junction, CO. Options include a data only subscription or a data and software package that provides valuable map viewing and planning tools. For each subscription, there are Base and Complete levels that include the features listed below. Raw tree canopy data can also be purchased, if desired.

Included Features		Base	Complete
Data Only	<b>Tree canopy cover metrics</b> Based on <a href="#">US Tree Map</a> data, 60 cm <a href="#">NAIP</a> aerial imagery, and LiDAR using AI methods. Scales include city boundary, census blocks, block groups, ZIP codes, HUC-12 watersheds	✓	✓
	<b>Land cover metrics</b> Tree canopy, shrub, grass/open space, impervious, bare soil, and water metrics for the scales listed above	-	✓
	<b>Cyclical updates</b> With an active subscription, you receive the latest data every 2 years, on average. Data files are redelivered (Base) and uploaded to software products (Complete).	✓	✓
	<b>Metrics for two custom geographies</b> Examples include neighborhoods, city council districts, parcels, land use, parks, right-of-way	-	✓
	<b>Tree canopy change metrics</b> One additional historic year is mapped and change metrics calculated for each scale included.	-	✓
<b>Data Cost (Annual)</b>		<b>\$3,000</b>	<b>\$5,000</b>
Software and Data	<b>Web software is provided to interact with the data included above</b>	✓	✓
	<b>TreePlotter™ Public Portal</b> Standalone or embeddable web map to view included data	✓	✓
	<b>TreePlotter™ CANOPY</b> Interactive web-mapping software that allows viewing data, planning tree plantings, and growing the tree canopy	-	✓
	<b>Ecosystem service benefits</b> Based on i-Tree values for air quality, carbon, and stormwater	-	✓
	<b>Tree Equity Score</b> See where low tree canopy cover overlaps with socioeconomic and environmental needs	✓	✓
<b>Software and Data Cost (Annual)</b>		<b>\$6,000</b>	<b>\$7,500</b>
<b>Raw tree canopy GIS data (optional)</b> GeoTIFF raster or shapefile format for any year later than 2010		\$3,500	\$3,500

\* Use of the GIS data files is licensed-based, and access to software requires an active subscription. All data provided must be destroyed if the subscription is terminated. Any derived information from licensed GIS data such as statistics and maps (PDF, PNG, etc.) used in reports or websites are not subject to licensing terms.

\*\* Average urban accuracy number = 97.3%. [View individual statewide accuracy.](#)

# TREE CANOPY ASSESSMENT



## TOTAL STUDY AREA

7,231 ACRES



## TREE CANOPY

2009: 1,718 ACRES (23.8%)

2018: 1,684 ACRES (23.3%)



## PLANTABLE SPACE

1,983 ACRES (27%)










*Note: Urban tree canopy percentages are based on land area only.*

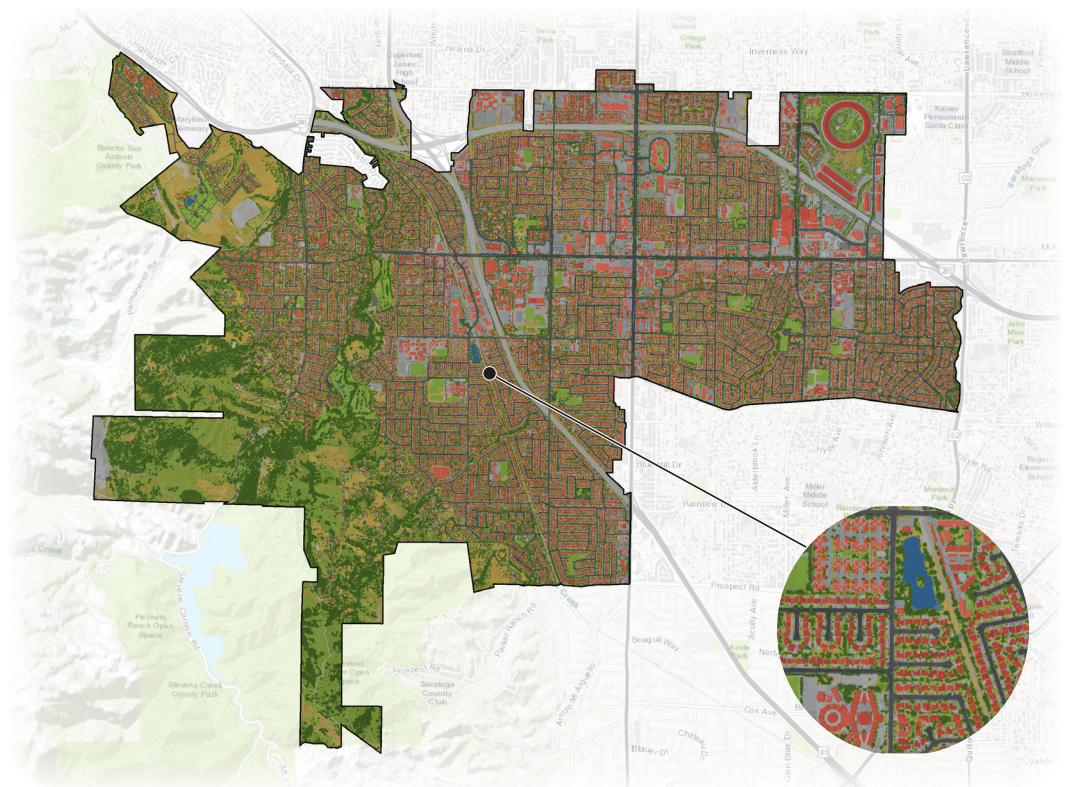


The urban forest in Cupertino is a valuable asset that provides residents and visitors with many ecological, environmental, and community benefits. This assessment analyzed the City's urban tree canopy (UTC), possible planting area (PPA), and change in UTC over a nine-year period. The results provide an updated baseline to develop strategies to protect and expand Cupertino's trees and natural areas during planning and development. The maps and project report help to concentrate efforts in areas where needs are greatest, tree planting space is available, and benefits can be realized.

**LAND COVER**    **23%**    **18%**    **48%**    **10%**    **<1%**

TREE CANOPY    NON-CANOPY VEGETATION    IMPERVIOUS    SOIL & DRY VEGETATION    WATER

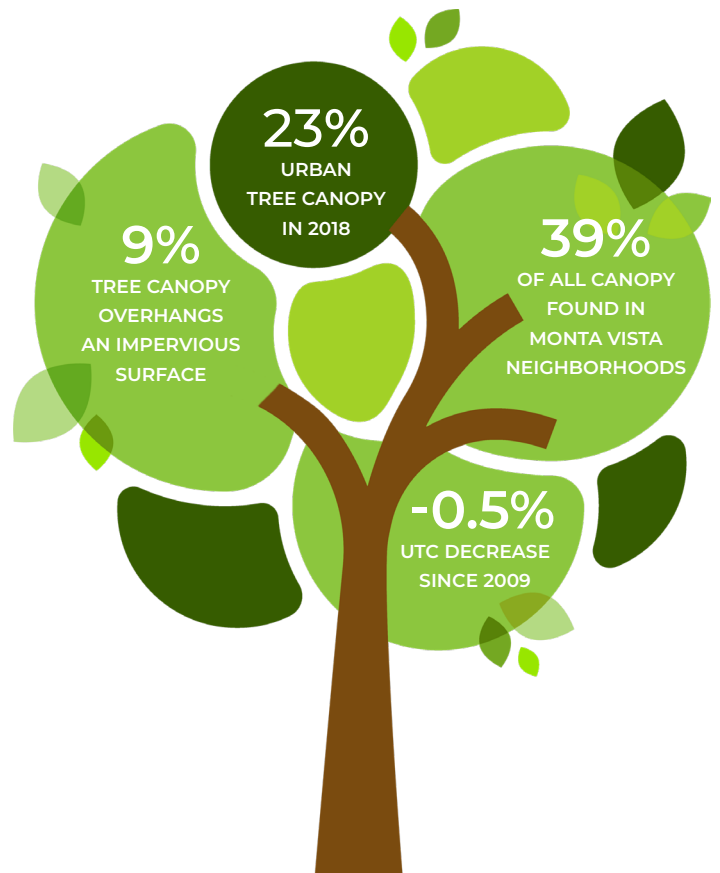
-  TREE CANOPY
-  OTHER VEGETATION
-  BUILDINGS
-  ROADS
-  PARKING LOTS
-  SIDEWALKS
-  OTHER IMPERVIOUS
-  SOIL & DRY VEGETATION
-  WATER



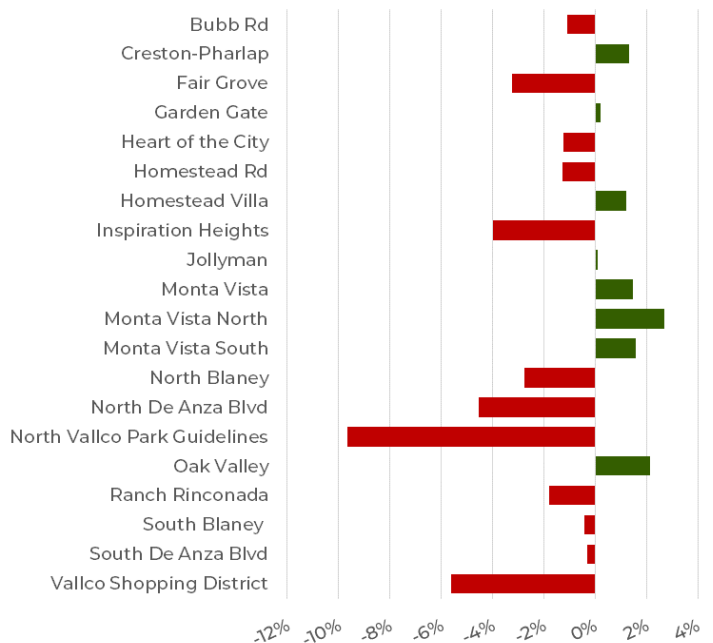
*Note: Land cover percentages are based on total area.*

Tree canopy data were analyzed for Cupertino's planning neighborhoods to determine the distribution of existing and potential urban tree canopy throughout the City. Inspiration Heights had the highest canopy coverage at 39% and comprised 18% of the City's total existing canopy. This neighborhood, Monta Vista South, and Oak Valley offered the greatest opportunities for expanding the City's canopy and contained a combined 51% of all PPA in Cupertino, with 44%, 39%, and 50% PPA, respectively.

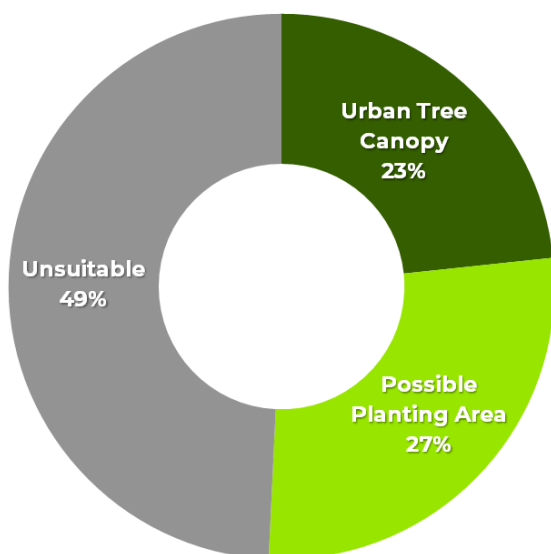
Planning Neighborhoods	Urban Tree Canopy		
	Acres	%	Dist.
Bubb Rd	36	9%	0%
Creston-Pharlap	307	25%	5%
Fair Grove	67	20%	1%
Garden Gate	288	16%	3%
Heart of the City	596	16%	6%
Homestead Rd	234	12%	2%
Homestead Villa	55	27%	1%
Inspiration Heights	778	39%	18%
Jollyman	343	18%	4%
Monta Vista	184	17%	2%
Monta Vista North	942	31%	18%
Monta Vista South	1,084	30%	20%
North Blaney	291	15%	3%
North De Anza Blvd	128	14%	1%
North Vallco Park Guidelines	269	17%	3%
Oak Valley	464	20%	6%
Ranch Rinconada	403	20%	5%
South Blaney	410	17%	4%
South De Anza Blvd	41	13%	0%
Vallco Shopping District	70	16%	1%
<b>Totals</b>	<b>6,989</b>	<b>24%</b>	<b>100%</b>



### URBAN TREE CANOPY CHANGE IN CUPERTINO PLANNING NEIGHBORHOODS (2009-2018)



### URBAN TREE CANOPY POTENTIAL



\*Possible Planting Areas (PPA) were defined as vegetated areas without tree canopy, soil, and impervious surfaces such as parking lots and sidewalks. These areas may not be suitable for planting to increase canopy due to slope, views, soils, or other limitations. Field surveys to identify suitable planting areas are advised.





# TREE CANOPY ASSESSMENT



## TOTAL STUDY AREA

445 ACRES



## TREE CANOPY

2011: 98 ACRES (21.8%)

2017: 66 ACRES (14.9%)

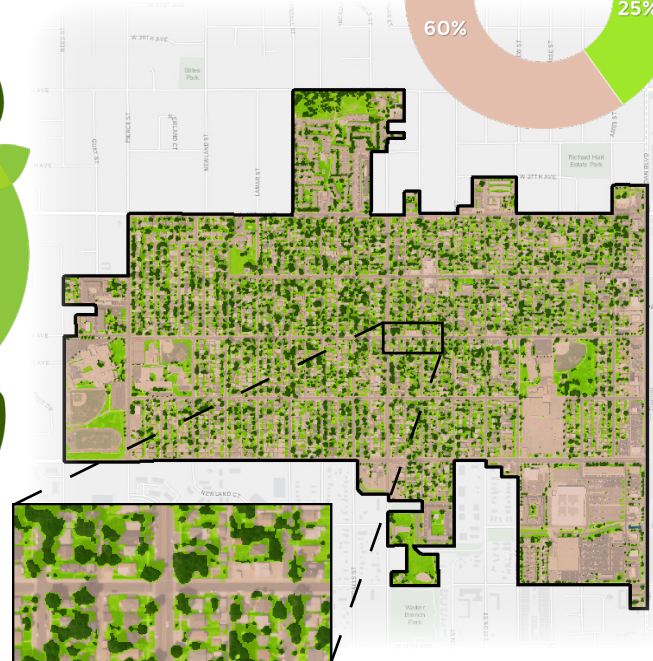
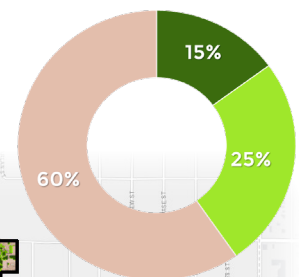
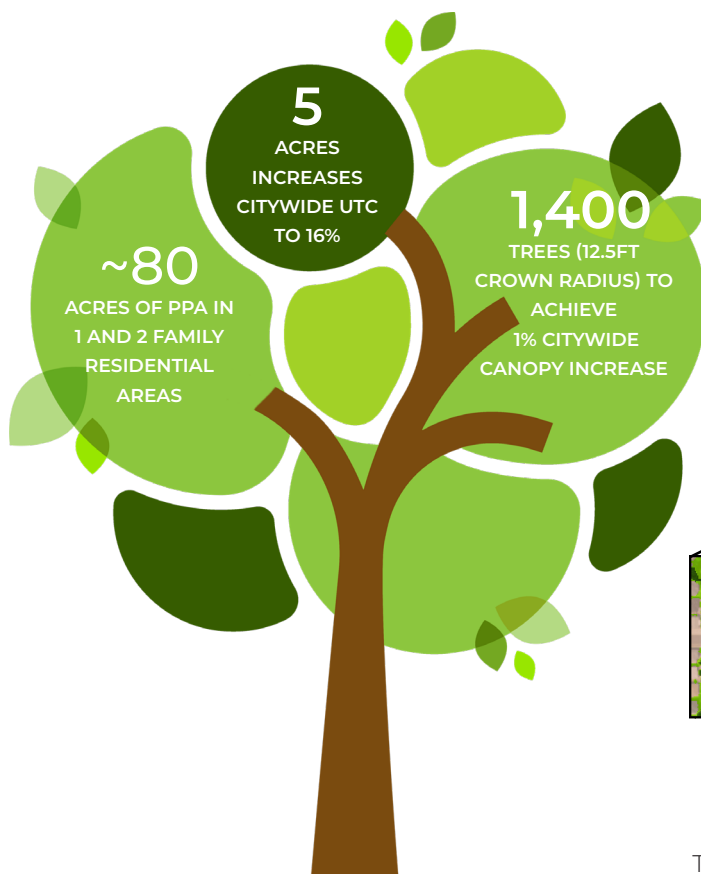


## PLANTABLE SPACE

ACRES 113 (25.5%)

The urban forest in Edgewater is a valuable asset providing residents and visitors with many ecological, environmental, and communal benefits. This assessment analyzed urban tree canopy (UTC), possible planting area (PPA), and areas unsuitable for planting and how they are distributed throughout the City's census block groups, zoning districts, and parcels. The results provide an update to the 2011 data produced in the Metro Denver Urban Forest Assessment performed in 2013 and will allow the City to develop updated and informed strategies to protect and expand tree canopy. In 2017, Edgewater had 14.9% urban tree canopy cover and 25.5% possible planting area. The maps and data help to concentrate efforts in areas where needs are greatest, tree planting space is available, and benefits can be realized.

## URBAN TREE CANOPY



**15%**  
TREE CANOPY

**60%**  
UNSUITABLE  
PLANTING  
AREA

**25%**  
POSSIBLE  
PLANTING  
AREA

Tree canopy data were analyzed for Edgewater's zoning districts to determine the distribution of existing and potential urban tree canopy throughout the City. The Residential, Two-Family district had the highest canopy coverage at 19%, and Residential, One-Family districts had the second highest coverage at 18%. Over 80% of all tree canopy and plantable space is found within these areas. The intangible benefits, or ecosystem services, that Edgewater's trees provide was calculated using the U.S.F.S i-Tree Landscape tool and showed a value of \$414K in annual savings provided through stormwater, air quality, and carbon sequestration services. As the City continues to grow and evolve, it is also important to consider the tree species makeup to ensure a healthy and diverse urban forest that is able to withstand increasing attacks from pests, diseases, and storm events and provide the most benefit to residents and visitors.

Zoning	Urban Tree Canopy		
	Acres	%	Dist.
Unlimited Commercial	0	0%	0%
Residential, Two-Family	7	19%	14%
Residential, One-Family	35	18%	67%
Residential Multiple-Dwelling Family	6	15%	12%
Residential, High-Rise Apartments	<1	8%	0%
Residential Planned Development	1	12%	1%
Limited Residential-Commercial	<1	2%	0%
Limited Commercial	3	5%	5%
General Commercial	<1	7%	0%
<b>Totals</b>	<b>53</b>	<b>86%</b>	<b>100%</b>

## ECOSYSTEM SERVICE BENEFITS



**Over \$400K in Annual Savings**



**Stormwater Runoff Reduction:**  
700K Gallons Reduced  
\$6,000 in Savings



**Air Quality Improvement:**  
7,234 LBS of Pollution Removed  
\$14,000 in Savings

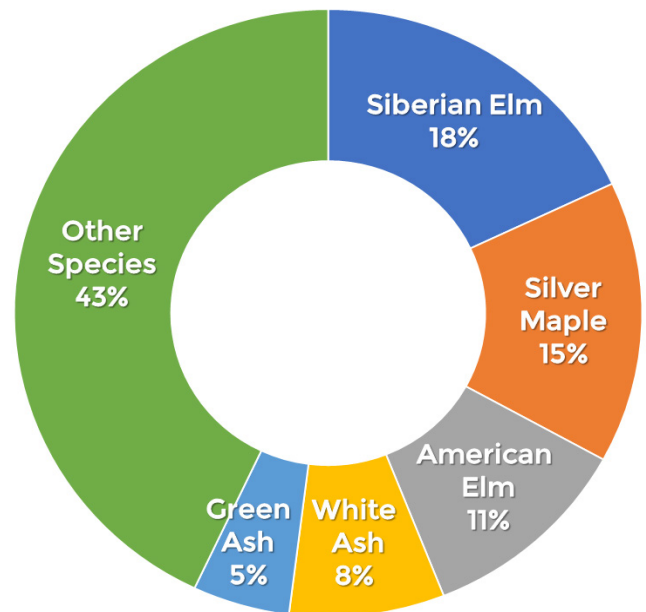


**Carbon Sequestration:**  
2,269 Tons Sequestered  
43 Tons Stored  
\$394,000 in Savings

## UTC POTENTIAL



## TOP TREE SPECIES IN EDGEWATER



\*Possible Planting Areas (PPA) were defined as vegetated areas without tree canopy. These areas may not be suitable for planting to increase canopy due to slope, views, soils, or other limitations. Field surveys to identify suitable planting areas are advised.  
\*\*Due to recent removal of Ash trees, the populations of Green and White Ash may be lower than shown above.



## 2021 DBH INCHES OF TREES REMOVED

ELKINS LEVI SHON TONY ROBERT	WRIGHT JAMIE WAYNE	BRIAN
TEAM BLUE	TEAM ORANGE	TEAM BRIAN

DATE	LOCATION	Watered?	Tree Alt ID	Inches	Inches	Inches	TOTAL
TOTAL INCHES REMOVED				692	834	443	1969
1.26.21	SHERWOOD		SHER61		18		
1.26.21	PAMONA		WUNK		35		
1.26.21	WEST LAKE		WLAKE40		10		
1.26.21	WEST LAKE		WLAKE54		8		
1.26.21	CV		CNVW 285		7		
1.26.21	CV		CNVW 286		7		
1.26.21	CV		CNVW 595		13		
1.27.21	PAMONA		UNK		30		
1.27.21	PAMONA		UNK		5		
1.25.21	SHERWOOD		SHER 181		35		
1.25.21	WHITMAN		WHIT47	34			
1.25.21	WHITMAN		WHIT51	28			
1.25.21	WHITMAN		WHIT59	28			
1.25.21	WHITMAN		WHIT68	10			
1.26.21	EMERSON		EMERS52	28			
1.26.21	EMERSON		EMERS55	24			
	HALL AVE		125HALL AVEF2			24	
	HALL AVE		201HALLAVE F1			8	
	WHITMAN		WHITE53			24	
	EMERSON		EMERS77			20	
1-Feb	DAR		POL04		2		
1-Feb	DAR		POL06		2		
1-Feb	DAR		POL03		2		
1-Feb	DAR		POL05		3		
1-Feb	DAR		POL13		3		
1-Feb	DAR		POL15		3		
1-Feb	DAR		POL19		4		
1-Feb	LC		R-PKWY-20		5		
1-Feb	LC		28910		2		
1-Feb	14 TH		N14TH21		23		
1-Feb	14 TH		14TH508		16		
29-Jan	LP		LINC-17		28		
1-Feb	Gunnison		GUNNISON2004		12		
1-Feb	17TH		17TH608		16		
1-Feb	16TH		16TH606		2		
1-Feb	CHIPETA		CHIPETA1227		15		
2-Feb	17TH		17TH604		21		
2-Feb	17TH		17TH603		18		

ELKINS LEVI		
SHON TONY ROBERT	WRIGHT JAMIE WAYNE	BRIAN
TEAM BLUE	TEAM ORANGE	TEAM BRIAN

				TEAM BLUE	TEAM ORANGE	TEAM BRIAN
3-Feb	13th	N	13THN0208		12	
3-Feb	14TH	N	14THN0203		8	
3-Feb	MAIN	N	MAIN1324		8	
3-Feb	14TH	N	14THN0212		28	
3-Feb	14TH	N	29456		20	
3-Feb	ROOD	N	ROOD1323		24	
3-Feb	WHITE	N	WHITE1311		16	
3-Feb	WHITE	N	WHITE1321		4	
8-Feb		GIRDLED	9TH0103		16	
8-Feb			9TH0102		10	
8-Feb		N	WHITE1121		12	
8-Feb		N	WHITE1118		12	
8-Feb			ROOD1008		12	
8-Feb		N	ROOD0902		3	
8-Feb		N	OURAY802		14	
8-Feb		N	CHIPETA1010		20	
9-Feb		N	BELFORD516		3	
9-Feb		N	TELLER402		1	
9-Feb		N	23RD504		4	
17-Feb	TELLER	N	TELLER318		12	
17-Feb	TELLER	N	TELLER610		8	
17-Feb	TELLER	N	TELLER620		8	
17-Feb	TELLER	N	TELLER814		8	
3-Feb	WHITE	N	WHITE1320		3	
17-Feb		N	TELLER804		12	
17-Feb		N	TELLER805		12	
17-Feb		N	TELLER806		20	
17-Feb		N	Teller810		12	
16-Feb			RDG-05		24	
16-Feb		N	HILL1122		4	
16-Feb		N	HILL1024		8	
16-Feb		N	HILL1022		12	
17-Feb		N	HILL726		12	
17-Feb		N	3RD807		20	
17-Feb		N	CHIPETA310		12	
18-Feb		N	CHIPETA309		16	
18-Feb		N	CHIPETA818		12	
22-Feb		N	CHIPETA817		12	
22-Feb		N	CHIPETA1305		15	
22-Feb		N	CHIPETA1306		20	

ELKINS LEVI		
SHON TONY ROBERT	WRIGHT JAMIE WAYNE	BRIAN
TEAM BLUE	TEAM ORANGE	TEAM BRIAN

				TEAM BLUE	TEAM ORANGE	TEAM BRIAN
2.3.21	6th	Y	6TH0301			16
2.3.21	WHITE	N	WHITE0601			20
2.3.21	WHITE	N	WHITE0603			20
2.3.21	1261 OURAY	Y	Ouray1232			20
2.2.21	1800 N 5th	N	1800N5THSTF1			15
2.2.21	1800 N 5th	N	1800N5THSTF2			15
2.2.21	1800 n 5th	N	1800N5THSTF3			15
2.2.21	1800 n 5th	N	1800N5THSTS4			18
2.2.21	539 CEDAR	Y	539CEDARAVEF1			12
2.1.21	EMERSON	Y	EMERS-40			20
2.1.21	933 N 5TH	N	6TH906			27
2.1.21	361 CHIPETA	N	4TH912			3
1.28.21	7TH and UTE	N	UNK			29
1.28.21	EMERSON	Y	EMERS-84			30
1.28.21	EMERSON	Y	EMERS-46			25
2.4.21	HAWTHORNE	Y	HAWT-120			15
2.4.21	HAWTHORNE	Y	HAWT-120			25
2.4.21	1235 COLORADO	N	COLORADO1206			19
2.4.21	1235 COLORADO	N	COLORADO1207			12
2.4.21	1430 MAIN	N	MAIN1415			11
			OURAY1416	20		
			OURAY2503	14		
			29646	12		
			24TH508	8		
			23RD503	10		
			GUNNISON2502	10		
			GUNNISON2403	10		
			GUNNISON2011	10		
			F22041CHIPITA	8		
			BELFORD1101	20		
			BELFORD601	20		
			BELFORD605	20		
			RDG-13	35		
			RDG-07	35		
			GRAND_AV-70	10		
			29732	32		
			hawt-132	30	834	443
			colorado1211	28		
			2055n7thsts4	28		
			2055n7thstf2	25		
			2055n7thstf3	20		
			northave1502	32		
			28986	35		
			grd_av-70	8		
			grd_av-44	12		
			grd_av-42	12		
			grd_av-40	12		
			grd_av-39	12		
			grd_av-38	12		
			inches removed	692	834	443



## NOTICE OF AWARD

Date: February 19, 2021

Company: Alpine Tree Service, LLC

Project: On-Call Tree Maintenance Services RFQ-4872-21-KH

---

Alpine Tree Service (Contractor) has been awarded the City of Grand Junction On-Call Tree Maintenance Services RFQ-4872-21-KH. The Contractor shall be paid in accordance with the fee schedule set forth in the solicitation document. Contract pricing shall be:

*Tree Pruning (price per diameter inch at 4.5 ft)*

- <8" DBH                 \$20
- 9 – 16" DBH             \$25
- 17 – 24" DBH           \$35
- 25 – 32" DBH           \$45
- 33 – 40" DBH           \$55
- >41" DBH                \$65

*Tree Removal (price per diameter inch at 4.5 ft)*

- <8" DBH                 \$30
- 9 – 16" DBH             \$40
- 17 – 24" DBH           \$50
- 25 – 32" DBH           \$60
- 33 – 40" DBH           \$70
- >41" DBH                \$80

*Stump Removal (price per diameter inch at 6 in above ground level)*

- <8" DBH                 \$16
- 9 – 16" DBH             \$16
- 17 – 24" DBH           \$17
- 25 – 32" DBH           \$18
- 33 – 40" DBH           \$19
- >41" DBH                \$20

Please notify Robert Davis, City of Grand Junction Parks Maintenance Supervisor 970-254-3825 or robd@gjcity.org with additional questions. As the Project Manager, Rob will be the contact person from this point forward.

CITY OF GRAND JUNCTION, COLORADO

DocuSigned by:  
*Kassy Hackett*  
F098E221BE93450  
\_\_\_\_\_  
Kassy Hackett, Purchasing Intern

---

---

**SUPPLIER ACKNOWLEDGEMENT**

Receipt of this Notice to Award is hereby acknowledged:

Company: Alpine Tree Service, LLC

By: DocuSigned by:  
*Charles Thompson, Alpine Tree Service* Charles Thompson, Alpine Tree Service  
BC098E50D064E0  
\_\_\_\_\_

Title: Owner

Date: 2/19/2021 | 17:57 EST

## Arbor Day (Week) Videos

**\*\*\*Shoot the week of April 5.**

Thursday – April 15, **Kick-Off Video**

- Rob telling residents the delivery is back, stay tuned all week to learn about the importance of trees, how resident's sign-up for a seedling.

Monday – April 19 - **Why do trees matter?**

Tuesday – April 20 - **Pruning video**

Wednesday – April 21 – **Arboretum Map**

- How to use the online map and taking a tour of the LP Arboretum.

Thursday – April 22 - **How to take care of your new seedlings.**

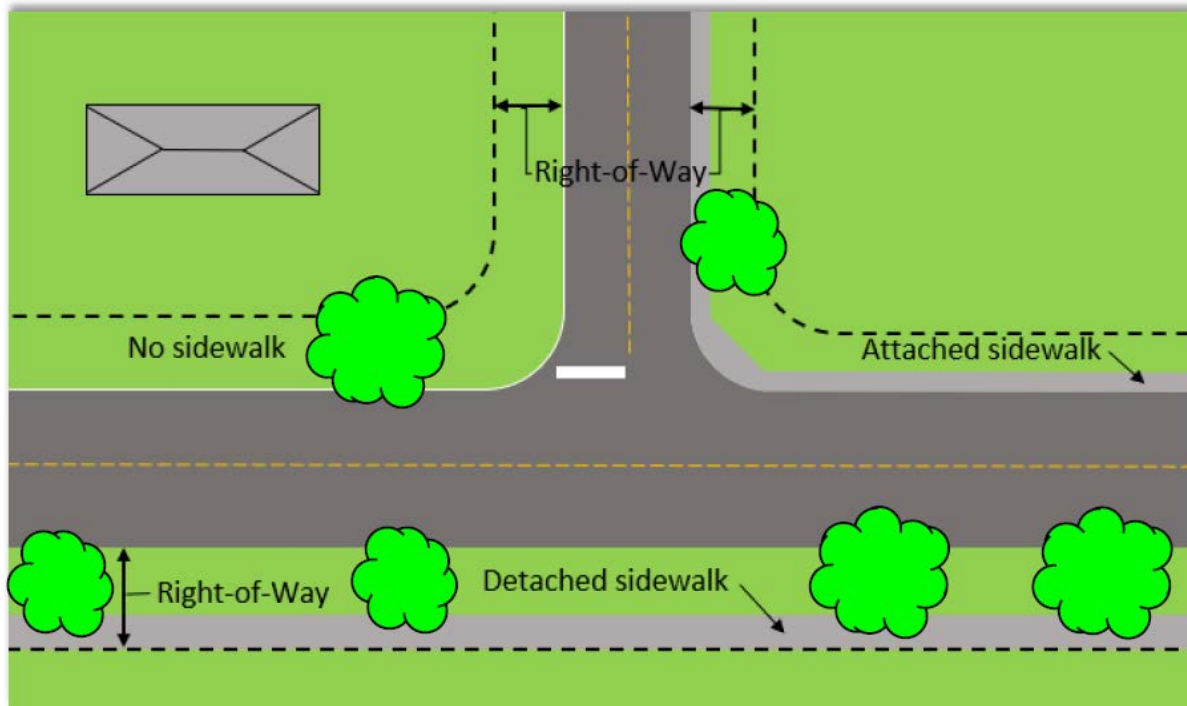
Friday – April 23 - **How to plant a larger tree?**



## 2021 Street Tree Planting Outreach - Tree Stewards Needed

The City of Grand Junction's Urban Forestry Program is committed to ensuring a healthy and resilient public tree canopy, and the City needs dedicated Tree Stewards to help in a "shared care" system for newly planted trees. As a Tree Steward, property owners commit to providing trees the water they need, protect trees from mowers and string trimmers, and keep watch over establishing trees. The City's Urban Forestry Program commits to the long-term care of street trees by providing pruning, plant health care, and removal services (as well as the City's fall leaf removal program).

City arborists have identified space in the street right-of-way adjacent to your property as a higher quality location for tree planting (having adequate irrigation and room for growth). Below is a diagram of typical right-of-way locations for properties in the City of Grand Junction. Should you choose to become a Tree Steward, a new tree will be placed within the street right-of-way adjacent to your property.



If you would like to help improve the quality and character of your neighborhood, contact the City's Urban Forestry Office at 970-254-3849 or [forestry@gjcity.org](mailto:forestry@gjcity.org) and sign up to be part of our 2021 street tree planting program.