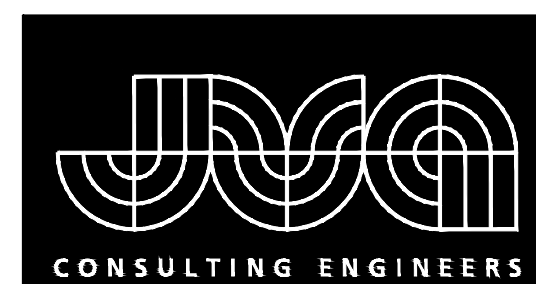


CITY OF GRAND JUNCTION HIGHWAY 50 SEWER REPLACEMENT GRAND JUNCTION, COLORADO PRELIMINARY DESIGN DOCUMENTS

Set No. _____

CONTACTS

OWNER:	CITY OF GRAND JUNCTION 333 WEST AVENUE, BUILDING C GRAND JUNCTION, CO 81501	ANNA PURTSCHER 970-224-1559 ANNAP@GCJ.CITY.ORG
ENVIRONMENTAL ENGINEER:	JVA, INC 817 COLORADO AVENUE, SUITE 301 GLENWOOD SPRINGS, CO 81601	COOPER BEST, P.E. (970) 404-3003 CBEST@JVA.JVA.COM
SURVEYOR:	WHS 1048 INDEPENDENCE AVE, SUITE A207 GRAND JUNCTION, CO 81505	ROBERT WHITSON 970-257-9101 RWHITSON@WHSMITHPC.COM
GAS AND ELECTRIC:	XCEL ENERGY	
COMMUNICATION:	CENTURY LINK	



JVA, Inc. 817 Colorado Ave., Suite 301
Glenwood Springs, CO Zip 81601
970.404.3100
www.jvajva.com
Boulder • Fort Collins • Winter Park
Glenwood Springs • Denver

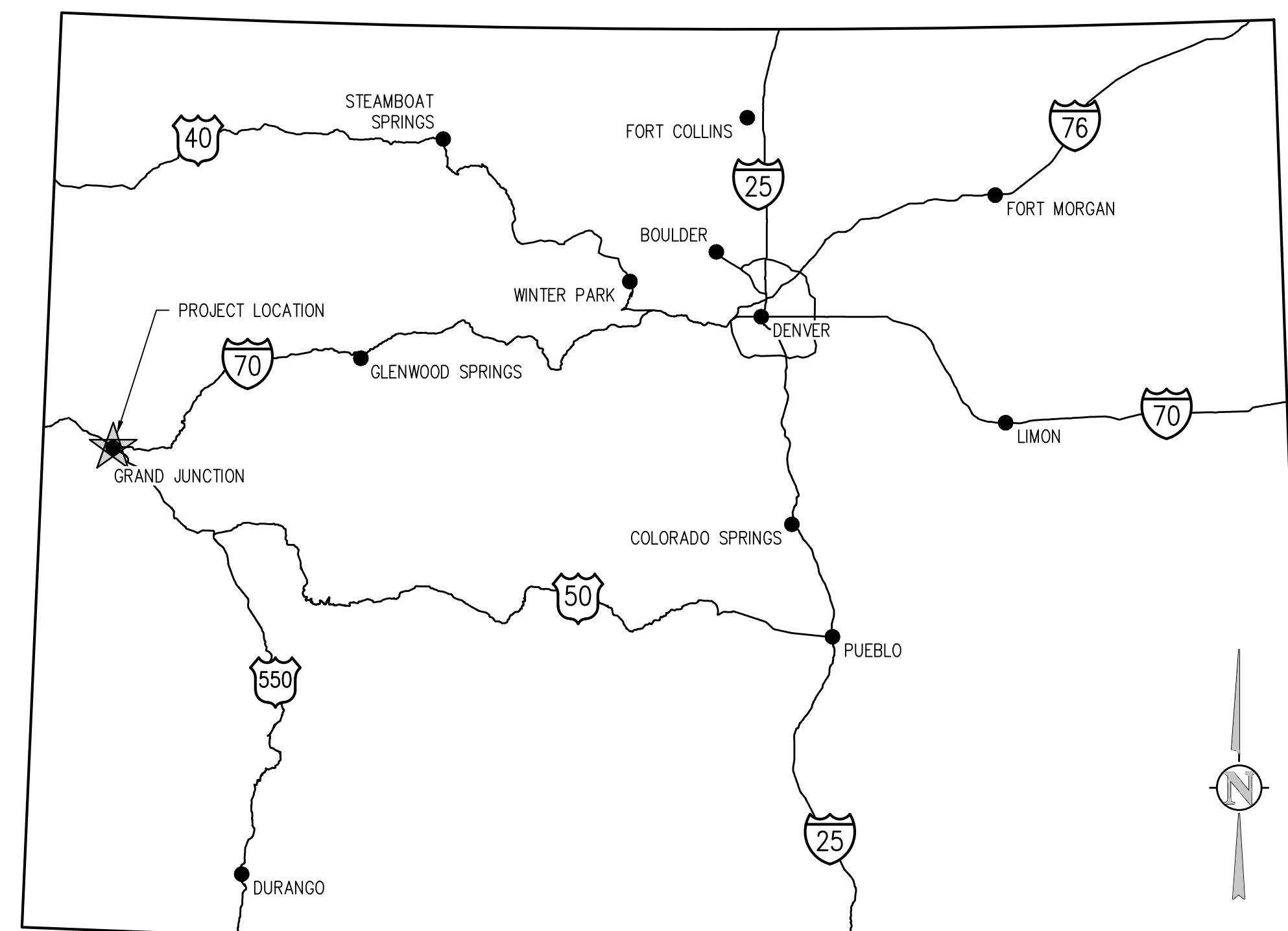
DRAWING INDEX

<u>SHEET NO.</u>	<u>TITLE</u>
G0.0	COVER SHEET
G0.1	LEGEND, NOTES, AND ABBREVIATIONS
G0.2	SUMMARY OF APPROXIMATE QUANTITIES
G1.0	KEY MAP
C1.0	SANITARY PLAN AND PROFILE
C1.1	SANITARY PLAN AND PROFILE
C1.2	SANITARY PLAN AND PROFILE
C1.3	SANITARY PLAN AND PROFILE
C1.4	SANITARY PLAN AND PROFILE
C1.5	SANITARY PLAN AND PROFILE
C1.6	SANITARY PLAN AND PROFILE
C1.7	SANITARY PLAN AND PROFILE LINDEN STREET

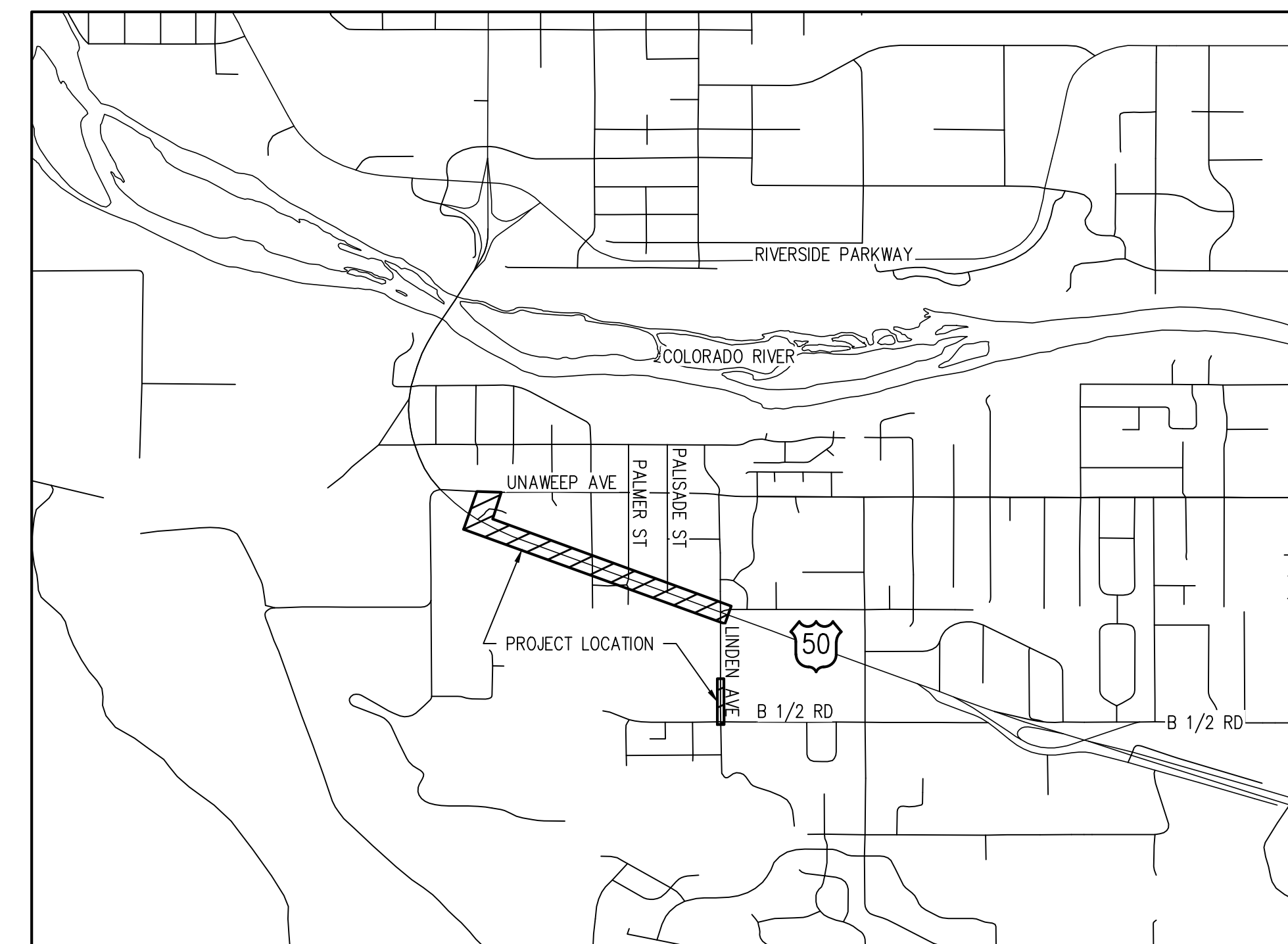
OCTOBER 2021

PREPARED UNDER THE SUPERVISION OF

JVA, Inc.



VICINITY MAP
NTS

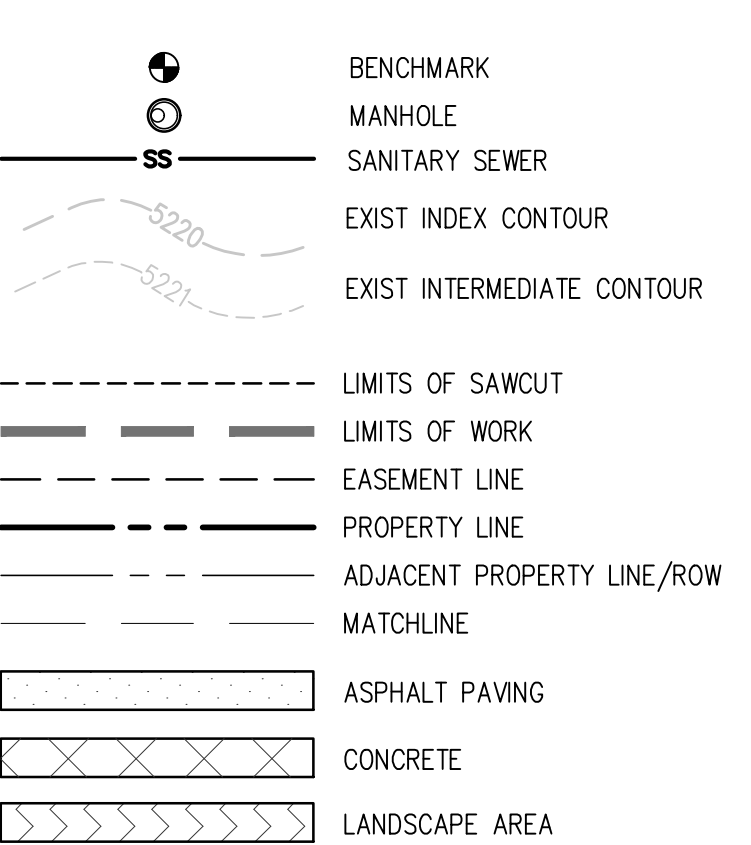


PROJECT LOCATION MAP
NTS

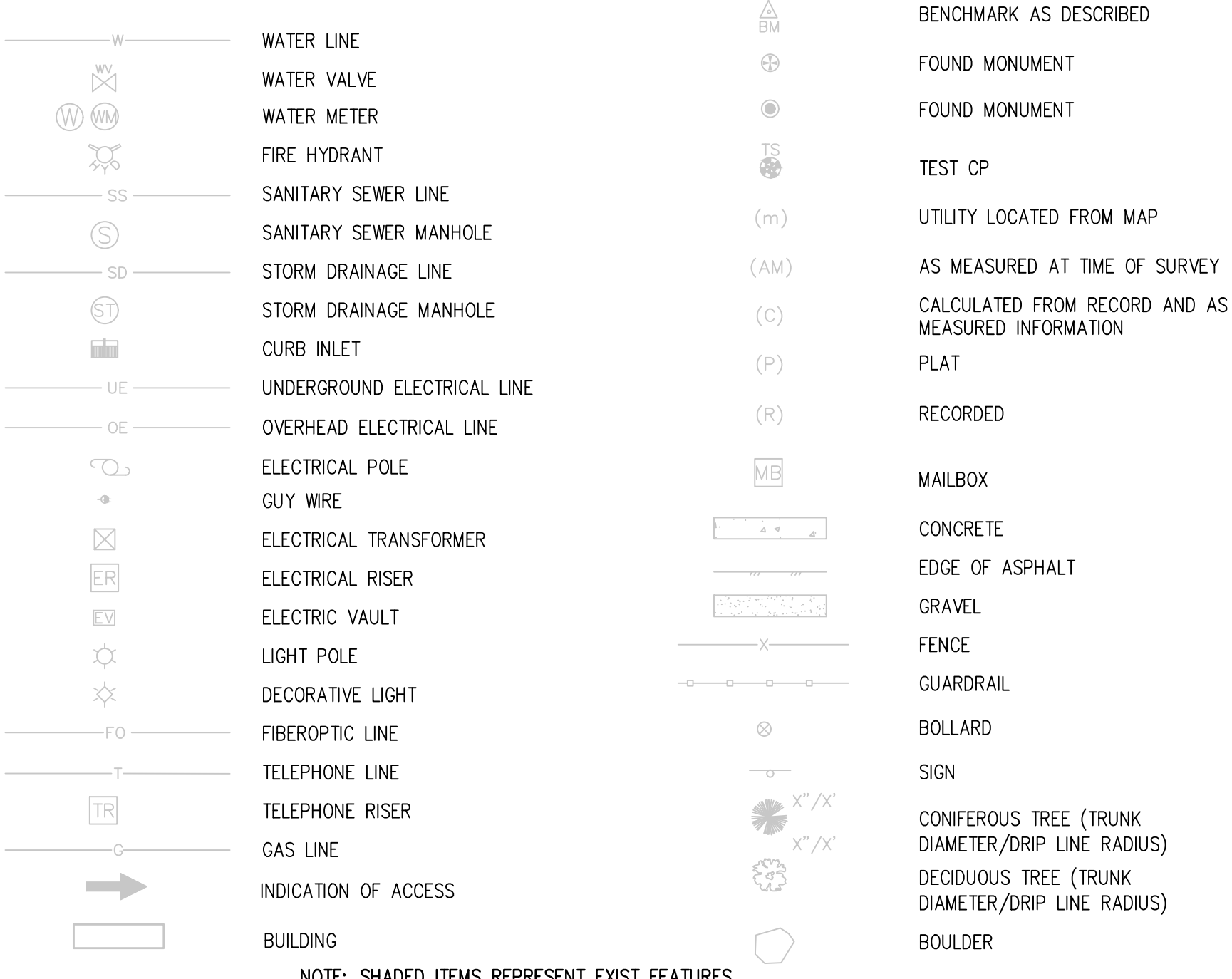
ABBREVIATIONS

AASHTO AMERICAN ASSOC. OF STATE HIGHWAY AND TRANSPORTATION OFFICIALS	N NORTH
ABAN ABANDON	NA NOT APPLICABLE
AC ASPHALTIC CONCRETE PAVING	NIC NOT IN CONTRACT
ADDL ADDITIONAL	NPT NATIONAL PIPE THREAD
ADDM ADDENDUM	NTS NOT TO SCALE
ADJ ADJUSTABLE	OC ON CENTER
ALT ALTERNATE	OD OUTSIDE DIAMETER
AMT AMOUNT	OPP OPPOSITE
APPROX APPROXIMATE	OPT OPTIONAL
ASTM AMERICAN SOCIETY FOR TESTING AND MATERIALS	PI POINT OF INTERSECTION
ASPH ASPHALT	PL PROPERTY LINE
ASSY ASSEMBLY	PE POLYETHYLENE
AVG AVERAGE	PREFAB PREFABRICATED
AWWA AMERICAN WATER WORKS ASSOC.	PRELIM PRELIMINARY
BC BACK OF CURB	PREP PREPARATION
BFV BUTTERFLY VALVE	PROP PROPOSED
BG FINISHED GRADE ADJACENT TO BOTTOM OF WALL	PSF POUNDS PER SQUARE FOOT
BLDG BUILDING	PSI POUNDS PER SQUARE INCH
BLK BLOCK	PVC POLYVINYL CHLORIDE OR
BM BENCH MARK	POINT OF VERTICAL CURVATURE
BMP BEST MANAGEMENT PRACTICE	PVMT PAVEMENT
BOS BOTTOM OF STEP	QTY QUANTITY
BOT BOTTOM	R RIGHT
BW BOTTOM OF WALL	RCP REINFORCED CONCRETE PIPE
CB CATCH BASIN	RD ROOF DRAIN
CCW COUNTER CLOCKWISE	RE REFERENCE
CDOT COLORADO DEPARTMENT OF TRANSPORTATION	RECT RECTANGULAR
CIP CAST IRON PIPE	REINF REINFORCE (D) (ING) (MENT)
CL CENTER LINE OR CHAIN LINK	REQD REQUIRED
CLR CLEAR	ROW RIGHT OF WAY
CMP CORRUGATED METAL PIPE	SAN SANITARY
CO CLEANOUT	SD STORM DRAIN
CONC CONCRETE	SECT SECTION
CONST CONSTRUCTION	SPD STANDARD PROCTOR DENSITY
CONT CONTINUOUS(ATION)	SPEC SPECIFICATION
COR CORNER	SO SQUARE
CTR CENTER	SO IN SQUARE INCH
CY CUBIC YARDS	SO FT SQUARE FOOT
DEMO DEMOLITION	SO YD SQUARE YARD
DIA DIAMETER	SS SANITARY SEWER
DIAG DIAGONAL	SST STAINLESS STEEL
DIP DUCTILE IRON PIPE	STA STATION
DOM DOMESTIC	STD STANDARD
DN DOWN	STL STEEL
DWG DRAWING	STRUCT STRUCTURAL
E EAST	SVC SERVICE
EA EACH	SWMP STORMWATER MANAGEMENT PLAN
ECC ECCENTRIC	SYM SYMMETRICAL
ELB ELBOW	TBC TOP BACK OF CURB
ELEC ELECTRICAL	TBM TEMPORARY BENCH MARK
ENGR ENGINEER	TEMP TEMPORARY
EOP EDGE OF PAVEMENT	THK THICK
EQ EQUAL	TOB TOP OF BANK
EQUIV EQUIVALENT	TOC TOP OF CONCRETE OR TOP OF CURB
ESMT EASEMENT	TOS TOP OF STEP
EST ESTIMATE	TOT TOTAL
EMST EXISTING	TW TOP OF WALL OR CAP OF WALL
FES FLARED END SECTION	TYP TYPICAL
FF FINISH FLOOR	UBC UNIFORM BUILDING CODE
FG FINISH GRADE	UGL UNDERGROUND ELECTRIC UTILITY
FH FIRE HYDRANT	VERT VERTICAL
FL FLOW LINE	VVC POINT OF VERTICAL CURVATURE
FN FENCE	VCP VITRIFIED CLAY PIPE
FOC FACE OF CONCRETE	W WIDE OR WIDTH
FT FEET	W/ WITH
FTG FOOTING OR FITTING	W/O WITHOUT
G GAS	WQCE WATER QUALITY CONTROL ELEVATION
GAL GALLON	WSE WATER SURFACE ELEVATION
GALV GALVANIZED	WW WASTEWATER
GIP GALVANIZED IRON PIPE	X SECT CROSS SECTION
GND GROUND	
GR GRATE	
GSP GALVANIZED STEEL PIPE	
GV GATE VALVE	
H HIGH	
HE HORIZONTAL ELLIPTICAL	
HDWL HEADWALL	
HORIZ HORIZONTAL	
HP HIGH POINT	
HR HOUR	
HWY HIGHWAY	
HWL HIGH WATER LINE	
HYD HYDRANT	
INCL INCLUDED	
ID INSIDE DIAMETER	
IN INLET	
INSUL INSULATION	
INV INVERT	
IRR IRRIGATION	
JTS JOINTS	
L LEFT OR LITER	
LSCAPE LANDSCAPE(ING)	
LF LINEAR FOOT	
LP LOW POINT	
LT LIGHT	
LWL LOW WATER LEVEL	
MAINT MAINTENANCE	
MAN MANUAL	
MATL MATERIAL	
MAX MAXIMUM	
ME MATCH EXISTING	
MECH MECHANICAL	
MFR MANUFACTURER	
MH MANHOLE	
MIN MINIMUM	
MISC MISCELLANEOUS	
MJ MECHANICAL JOINT	

DESIGN LEGEND



SURVEY LEGEND

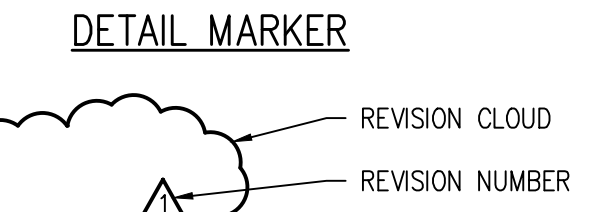
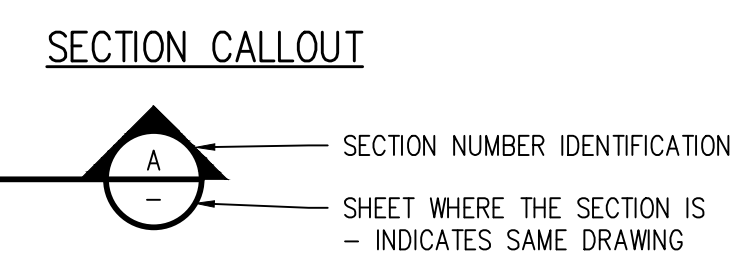


NOTE: SHADED ITEMS REPRESENT EXIST FEATURES

GENERAL NOTES

- ALL MATERIALS AND WORKMANSHIP SHALL BE IN CONFORMANCE WITH THE LATEST STANDARDS AND SPECIFICATIONS OF THE CITY OF GRAND JUNCTION, COLORADO DEPARTMENT OF TRANSPORTATION, CITY OF GRAND JUNCTION FIRE PROTECTION REQUIREMENTS, AND APPLICABLE STATE AND LOCAL STANDARDS AND SPECIFICATIONS. THE CONTRACTOR SHALL HAVE IN POSSESSION AT THE JOB SITE AT ALL TIMES ONE (1) SIGNED COPY OF APPROVED PLANS, STANDARDS AND SPECIFICATIONS. CONTRACTOR SHALL CONSTRUCT AND MAINTAIN EMERGENCY ACCESS ROUTES TO THE SITE AND STRUCTURE AT ALL TIMES PER THE APPLICABLE CITY OF GRAND JUNCTION FIRE PROTECTION DISTRICT REQUIREMENTS. THE CONTRACTOR SHALL OBTAIN WRITTEN APPROVAL FOR ANY VARIANCE TO THE ABOVE DOCUMENTS. NOTIFY ENGINEER OF ANY CONFLICTING STANDARDS OR SPECIFICATIONS. IN THE EVENT OF ANY CONFLICTING STANDARD OR SPECIFICATION, THE MORE STRINGENT OR HIGHER QUALITY STANDARD, DETAIL OR SPECIFICATION SHALL APPLY.
- THE CONTRACTOR SHALL OBTAIN, AT HIS OWN EXPENSE, ALL APPLICABLE CODES, LICENSES, STANDARD SPECIFICATIONS, PERMITS, BONDS, ETC., WHICH ARE NECESSARY TO PERFORM THE PROPOSED WORK, INCLUDING, BUT NOT LIMITED TO A LOCAL AND STATE GROUNDWATER DISCHARGE AND COLORADO DEPARTMENT OF HEALTH AND ENVIRONMENT (CDPHE) STORMWATER DISCHARGE PERMIT ASSOCIATED WITH CONSTRUCTION ACTIVITY.
- THE CONTRACTOR SHALL BE RESPONSIBLE FOR NOTIFYING THE REQUIRED PARTY (OWNER AND ENGINEER) AT LEAST 48 HOURS PRIOR TO START OF ANY CONSTRUCTION, PRIOR TO BACKFILLING, AND AS REQUIRED BY JURISDICTIONAL AUTHORITY AND/OR PROJECT SPECIFICATIONS. THE CONTRACTOR SHALL CONTINUE WITH NOTIFICATIONS THROUGHOUT THE PROJECT AS REQUIRED BY THE STANDARDS AND SPECIFICATIONS.
- THE LOCATIONS OF EXISTING UTILITIES ARE SHOWN IN THE APPROXIMATE LOCATION BASED ON INFORMATION BY OTHERS. NOT ALL UTILITIES MAY BE SHOWN. THE CONTRACTOR SHALL DETERMINE THE EXACT SIZE, LOCATION AND TYPE OF ALL EXISTING UTILITIES WHETHER SHOWN OR NOT BEFORE COMMENCING WORK. THE ENGINEER AND/OR OWNER ASSUMES NO RESPONSIBILITY FOR THE ACCURACY OR COMPLETENESS SHOWN ON PLANS. THE CONTRACTOR SHALL BE FULLY AND SOLELY RESPONSIBLE FOR ANY AND ALL DAMAGES AND COSTS WHICH MIGHT OCCUR BY THE CONTRACTOR'S FAILURE TO EXACTLY LOCATE AND PRESERVE ANY AND ALL UTILITIES. THE CONTRACTOR SHALL NOTIFY ALL PUBLIC AND PRIVATE UTILITY COMPANIES AND DETERMINE THE LOCATION OF ALL EXISTING UTILITIES PRIOR TO PROCEEDING WITH GRADING AND CONSTRUCTION. ALL WORK PERFORMED IN THE AREA OF UTILITIES SHALL BE PERFORMED AND INSPECTED ACCORDING TO THE REQUIREMENTS OF THE UTILITY OWNER. LIKEWISE, THE CONTRACTOR SHALL BE RESPONSIBLE FOR LOCATING AND MAPPING ANY EXISTING UTILITY (INCLUDING DEPTH) WHICH MAY CONFLICT WITH THE PROPOSED CONSTRUCTION, AND FOR RELOCATING ENCOUNTERED UTILITIES AS DIRECTED BY THE ENGINEER. CONTRACTOR SHALL CONTACT AND RECEIVE APPROVAL FROM CITY OF GRAND JUNCTION BEFORE RELOCATING ANY ENCOUNTERED UTILITIES. CONTRACTOR RESPONSIBLE FOR SERVICE CONNECTIONS, AND RELOCATING AND RECONNECTING AFFECTED UTILITIES AS COORDINATED WITH UTILITY OWNER AND/OR ENGINEER, INCLUDING NON-MUNICIPAL UTILITIES (TELEPHONE, GAS, CABLE, ETC.), WHICH SHALL BE COORDINATED WITH THE UTILITY OWNER. THE CONTRACTOR SHALL IMMEDIATELY CONTACT ENGINEER UPON DISCOVERY OF A UTILITY DISCREPANCY OR CONFLICT. AT LEAST 48 HOURS PRIOR TO CONSTRUCTION, THE CONTRACTOR SHALL NOTIFY THE UTILITY NOTIFICATION CENTER OF COLORADO (1-800-922-1987, WWW.UNCC.ORG). SEE SURVEY UTILITY LOCATION INFORMATION BELOW.
- THE CONTRACTOR SHALL BE SOLELY AND COMPLETELY RESPONSIBLE FOR CONDITIONS AT AND ADJACENT TO THE JOB SITE, INCLUDING SAFETY OF ALL PERSONS AND PROPERTY DURING THE PERFORMANCE OF THE WORK. THE CONTRACTOR SHALL PREPARE A TRAFFIC CONTROL PLAN FOR OWNER AND/OR CITY APPROVAL AND PROVIDE ALL LIGHTS, SIGNS, BARRICADES, FENCING, FLAGMEN OR OTHER DEVICES NECESSARY TO PROVIDE FOR PUBLIC SAFETY. THIS REQUIREMENT SHALL APPLY CONTINUOUSLY AND NOT BE LIMITED TO NORMAL WORKING HOURS. THE CONTRACTOR AGREES TO COMPLY WITH THE PROVISIONS OF THE TRAFFIC CONTROL PLAN AND THE LATEST EDITION OF THE "MANUAL ON UNIFORM TRAFFIC CONTROL DEVICES," PART VI, FOR CONSTRUCTION SIGNAGE AND TRAFFIC CONTROL. ALL TEMPORARY AND PERMANENT TRAFFIC SIGNS SHALL COMPLY TO THE MANUAL ON UNIFORM TRAFFIC CONTROL DEVICES (MUTCD) WITH REGARD TO SIGN SHAPE, COLOR, SIZE, LETTERING, ETC. UNLESS OTHERWISE SPECIFIED. IF APPLICABLE, PART NUMBERS ON SIGNAGE DETAILS REFER TO MUTCD SIGN NUMBERS.
- THE CONTRACTOR SHALL BE RESPONSIBLE FOR REMOVING ANY GROUNDWATER ENCOUNTERED DURING THE CONSTRUCTION OF ANY PORTION OF THIS PROJECT. GROUNDWATER SHALL BE PUMPED, PIPED, REMOVED AND DISPOSED OF IN A MANNER WHICH DOES NOT CAUSE FLOODING OF EXISTING STREETS NOR EROSION ON ABUTTING PROPERTIES IN ORDER TO CONSTRUCT THE IMPROVEMENTS SHOWN ON THESE PLANS. GROUNDWATER TO BE PUMPED SHALL BE TESTED, PERMITTED, AND PUMPED PER THE STATE OF COLORADO AND LOCAL GROUNDWATER DISCHARGING PERMIT REQUIREMENTS.
- RIM AND GRATE ELEVATIONS SHOWN ON PLANS ARE APPROXIMATE ONLY AND ARE NOT TO BE TAKEN AS FINAL ELEVATIONS. THE CONTRACTOR SHALL ADJUST RIMS AND OTHER IMPROVEMENTS TO MATCH FINAL PAVEMENT AND FINISHED GRADE ELEVATIONS.
- THE EXISTING AND PROPOSED ELEVATIONS OF FLATWORK, SIDEWALKS, CURBS, THRESHOLDS, PAVING, ETC. AS SHOWN HEREON ARE BASED ON EXTRAPOLATION OF FIELD SURVEY DATA, EXISTING CONDITIONS, AND DATA PROVIDED BY OTHERS. AT CRITICAL AREAS AND SITE FEATURES, CONTRACTOR SHALL HAVE FORMWORK INSPECTED AND APPROVED BY OWNER, OWNER'S REPRESENTATIVE, OR ENGINEER PRIOR TO PLACING CONCRETE. MINOR ADJUSTMENTS, AS APPROVED, TO PROPOSED GRADES, INVERTS, ETC. MAY BE REQUIRED TO PREVENT PONDING OR SLOPE NOT IN CONFORMANCE WITH MUNICIPAL STANDARDS. ALL FLATWORK MUST PREVENT PONDING AND PROVIDE POSITIVE DRAINAGE AWAY FROM EXISTING AND PROPOSED BUILDINGS, WALLS, ROOF DRAIN OUTFALLS, ACROSS DRIVES AND WALKS, ETC., TOWARDS THE PROPOSED INTENDED DRAINAGE FEATURES AND CONVEYANCES.
- FINAL LIMITS OF REQUIRED ASPHALT SAWCUTTING AND PATCHING MAY VARY FROM LIMITS SHOWN ON PLANS. CONTRACTOR TO PROVIDE SAWCUT AND PATCH WORK TO ACHIEVE POSITIVE DRAINAGE AND A SMOOTH TRANSITION TO EXISTING ASPHALT WITHIN SLOPES ACCEPTABLE TO THE ENGINEER AND WITHIN MUNICIPAL STANDARDS. CONTRACTOR SHALL PROVIDE ADDITIONAL SAWCUTTING AND PATCHING AT UTILITY WORK, CONNECTION POINTS TO EXISTING PAVEMENT AND FEATURES, ETC. THAT MAY NOT BE DELINEATED ON PLANS.
- OWNER TO APPROVE ALL PRIVATE CONCRETE FINISHING, JOINT PATTERNS AND COLORING REQUIREMENTS PRIOR TO CONSTRUCTION. SUBMIT JOINT LAYOUT PLAN TO OWNER FOR APPROVAL PRIOR TO CONSTRUCTION.
- PIPE LENGTHS AND HORIZONTAL CONTROL POINTS SHOWN ARE FROM CENTER OF STRUCTURES, END OF FLARED END SECTIONS, ETC. SEE STRUCTURE DETAILS FOR EXACT HORIZONTAL CONTROL LOCATION. CONTRACTOR IS RESPONSIBLE FOR ADJUSTING ACTUAL PIPE LENGTHS TO ACCOUNT FOR STRUCTURES AND LENGTH OF FLARED END SECTIONS.
- ALL SURPLUS MATERIALS, TOOLS, AND TEMPORARY STRUCTURES, FURNISHED BY THE CONTRACTOR, SHALL BE REMOVED FROM THE PROJECT SITE BY THE CONTRACTOR. ALL DEBRIS AND RUBBISH CAUSED BY THE OPERATIONS OF THE CONTRACTOR SHALL BE REMOVED, AND THE AREA OCCUPIED DURING CONSTRUCTION ACTIVITIES SHALL BE RESTORED TO ITS ORIGINAL CONDITION, WITHIN 48 HOURS OF PROJECT COMPLETION, UNLESS OTHERWISE DIRECTED BY THE MUNICIPALITY OR OWNER'S REPRESENTATIVE.
- THE CONTRACTOR IS REQUIRED TO PROVIDE AND MAINTAIN EROSION AND SEDIMENT CONTROL MEASURES IN ACCORDANCE WITH THE LOCAL JURISDICTION, THE STATE OF COLORADO, MILE HIGH FLOOD DISTRICT "URBAN STORM DRAINAGE CRITERIA MANUAL VOLUME 3", THE M-STANDARD PLANS OF THE COLORADO DEPARTMENT OF TRANSPORTATION, AND THE APPROVED EROSION CONTROL PLAN. JURISDICTIONAL AUTHORITY MAY REQUIRE THE CONTRACTOR TO PROVIDE ADDITIONAL EROSION CONTROL MEASURES AT THE CONTRACTOR'S EXPENSE DUE TO UNFORESEEN EROSION PROBLEMS OR IF THE PLANS DO NOT FUNCTION AS INTENDED. THE CONTRACTOR IS RESPONSIBLE FOR PROHIBITING SILT AND DEBRIS LADEN RUNOFF FROM LEAVING THE SITE, AND FOR KEEPING ALL PUBLIC AREAS FREE OF MUD AND DEBRIS. THE CONTRACTOR IS RESPONSIBLE FOR RE-ESTABLISHING FINAL GRADES AND FOR REMOVING ACCUMULATED SEDIMENTATION FROM ALL AREAS INCLUDING SWALES AND DETENTION/WATER QUALITY AREAS. CONTRACTOR SHALL REMOVE TEMPORARY EROSION CONTROL MEASURES AND REPAIR AREAS AS REQUIRED AFTER VEGETATION IS ESTABLISHED AND ACCEPTED BY OWNER AND MUNICIPALITY.
- ADA COMPLIANCE: THE CROSS-SLOPE OF ALL WALKS MUST BE LESS THAN 1:48 (2.0%) PERPENDICULAR TO DIRECTION OF TRAVEL. RUNNING SLOPE OF ACCESSIBLE WALKS MUST BE NOT STEEPER THAN 1:20 (5.0%) IN DIRECTION OF TRAVEL. MAXIMUM GRADE OF ACCESSIBLE CURB RAMPS AND RAMPS IS 1:12 (8.3%). CURB RAMPS SHALL PROVIDE A LANDING AT THE TOP AND RAMP RUNS PROVIDE LANDINGS AT THE BOTTOM AND TOP OF EACH RAMP RUN AT A SLOPE NOT TO EXCEED 1:48. RAMPS RUNS EXCEEDING SIX INCHES SHALL INCLUDE HANDRAILS. ACCESSIBLE PARKING SPACES AND ACCESS AISLES SHALL NOT EXCEED 1:48 IN ALL DIRECTIONS. CONTRACTOR SHALL NOTIFY ENGINEER PRIOR TO PLACEMENT OF FLATWORK OF SITE CONDITIONS OR DISCREPANCIES WHICH PREVENT TYPICAL REQUIRED GRADES FROM BEING ACHIEVED. ALL RAMPS, STAIRS, EDGE PROTECTION, AND RAILINGS SHALL BE CONSTRUCTED IN ACCORDANCE WITH CURRENT ADA STANDARDS. ACCESSIBLE CURB RAMPS SHALL CONFORM TO THE CDOT M-STANDARDS (SEE DETAIL M-608-1, ETC). ACCESSIBLE FEATURE WITHIN THE PUBLIC RIGHTS-OF-WAY SHALL BE CONSTRUCTED TO CONFORM TO THE LOCAL AUTHORITY HAVING JURISDICTION REQUIREMENTS.
- PROTECT ALL TREES AND VEGETATION. PLACE CONSTRUCTION FENCING AT DRIP LINE OF TREES AND PLANTS NEAR THE WORK ZONE. DEEP WATER TREES WEEKLY. HAND EXCAVATION REQUIRED AT ROOT ZONES WHERE PROPOSED PAVING OR UTILITY WORK IS WITHIN DRIPLINE OF TREES.
- SURVEY INFORMATION:
 - BENCHMARK INFORMATION: TOPOGRAPHIC INFORMATION WAS PROVIDED BY WHS ENGINEERING. SEE IMPROVEMENT AND TOPOGRAPHIC SURVEY U.S. HIGHWAY 50 DATED 07-14-2021. PROJECT BENCHMARK ELEVATION: 4631.32 AT MESA COUNTY CONTROL POINT P310- PRECISION B-5PPM, NGS 9/16" STAINLESS STEEL ROD IN MONUMENT WELL (AKA NGS BM N428) AND 4793.43 AT MESA COUNTY CONTROL POINT P318 - PRECISION B-5PPM, NGS 9/16" STAINLESS STEEL ROD IN MONUMENT WELL (AKA NGS BM R428). THE DATUM IS MESA COUNTY LOCAL COORDINATE SYSTEM (MCLCS) GRAND VALLEY AREA (GVA) ZONE AND NAVD88 VERTICAL DATUM WITH GEOID 12A MODEL TO CONVERT ELLIPSOID HEIGHTS TO ORTHOMETRIC ELEVATIONS PER SURVEY. COORDINATE AND VERIFY ALL VERTICAL AND HORIZONTAL DATA SHOWN IN SURVEY AND REPORT ANY IRREGULARITIES OR DISCREPANCIES TO ENGINEER PRIOR TO CONSTRUCTION.
 - BASIS OF BEARINGS: BEARINGS ARE BASED ON GRID NORTH OF MESA COUNTY LOCAL COORDINATE SYSTEM IN THE GVA ZONE, LOCALLY DETERMINED BY GNSS OBSERVATIONS ON THE SHOWN INTERIOR ALIQUOT CORNER MONUMENTS RECOVERED IN SECTION 26, TOWNSHIP 1 WEST AT RANGE 1 WEST AT CENTER EAST 1/16TH CORNER AND THE NORTHEAST 1/16TH CORNER AS HAVING A MEASURED BEARING OF N 0°04'06" WEST AND MEASURED DISTANCE OF 1321.35 FEET.
 - HORIZONTAL CONTROL INFORMATION: HORIZONTAL CONTROL COORDINATES ARE BASED ON THE REFERENCED SURVEY AND ARE PROVIDED BY THE FOLLOWING POINTS AS SHOWN ON THE PLANS, (OTHER CONTROL POINTS CAN BE PROVIDED UPON REQUEST):

MC-P310	N28231.71	E92054.57	ELEV 4631.32	NGS 9/16" STAINLESS STEEL ROD IN MONUMENT (AKA NGS BM N428)
M5	N28912.87	E93390.70	ELEV 4632.14	3-1/4" BC/3" MESA COUNTY MARKER-E 1/16-S23-S26-1997-PLS 18478-NO.135-1
M53	N26264.20	E93398.04	ELEV 4654.37	3-1/2" AC/NO.6 REBAR THOMPSON-LANGFORD CORP-E 1/16-C C-S26-2006-PLS 18478
- SURVEY UTILITY LOCATION INFORMATION PER THE SURVEYOR: SUBSURFACE UTILITIES ARE SHOWN IN APPROXIMATE HORIZONTAL AND VERTICAL LOCATIONS CONSISTENT WITH ASCE 38-02 QUALITY LEVEL "B" (INFORMATION OBTAINED BY THE APPLICATION OF APPROPRIATE SURFACE GEOPHYSICAL METHODS TO DETERMINE THE EXISTENCE AND HORIZONTAL POSITION OF VIRTUALLY ALL UTILITIES WITHIN THE PROJECT LIMITS. THE INFORMATION OBTAINED IN THIS MANNER IS SURVEYED TO PROJECT CONTROL.) AND QUALITY LEVEL "C" (INFORMATION OBTAINED BY SURVEYING AND PLOTTING VISIBLE ABOVE-GROUND UTILITY FEATURES AND BY USING PROFESSIONAL JUDGMENT IN CORRELATING THIS INFORMATION TO QUALITY LEVEL D; INFORMATION DERIVED FROM EXISTING RECORDS OR ORAL RECOLLECTIONS), AND BASED ON FIELD MEASUREMENTS PROVIDED BY THE OWNER AND THE CONTRACTOR. SUBSURFACE UTILITIES ARE NOT DEPICTED TO THE EXTENT SET FORTH IN ASCE 38-02 QUALITY LEVELS "A" (INFORMATION OBTAINED THROUGH THE NONDESTRUCTIVE EXPOSURE OF UNDERGROUND UTILITIES, AND ALSO PROVIDES THE TYPE, SIZE, CONDITION, MATERIAL AND OTHER CHARACTERISTICS OF UNDERGROUND FEATURES.), TO THE EXTENT DEEMED NECESSARY FOR THE PROTECTION OF PERSONS AND PROPERTY, POTHOLING OR OTHER PRECISE MAPPING MAY BE COMPLETED TO CONFIRM THE EXACT LOCATION OF ANY SUBSURFACE UTILITIES. NOTIFY OWNER AND ENGINEER WITH ALL UTILITY INFORMATION PRIOR TO CONSTRUCTION VISIT [HTTPS://WWW.FHWA.DOT.GOV/PROGRAMADMIN/SUEINDEX.CFM](https://www.fhwa.dot.gov/programadmin/sueindex.cfm) FOR MORE INFORMATION.
- THE CONTRACTOR AT THE CONTRACTORS EXPENSE SHALL FURNISH THE OWNER AND ENGINEER OF RECORD A COMPLETE SET OF CONSTRUCTION RECORD DRAWINGS ("AS-BUILTS") FOR THE CONSTRUCTED IMPROVEMENTS. THE AS-BUILT SET SHALL SHOW SUFFICIENT DIMENSION TIES TO PERMANENT SURFACE FEATURES OR BURNING/EASTING POINTS FOR ALL BURIED FACILITIES TO ALLOW FOR FUTURE LOCATING. THE AS-BUILT SET SHALL SHOW AS-BUILT CONTOURS AND ELEVATIONS OF ASPHALT AND CONCRETE FLATWORK, FLOWLINES, GRADE BREAKS, STAIRS, CROSS-SLOPES, HIGH AND LOW POINTS, AND ADDITIONAL ELEVATIONS TO DEMONSTRATE IMPROVEMENTS WERE CONSTRUCTED PER PLANS. THE AS-BUILT SET SHALL SHOW ELEVATIONS OF ALL DETENTION/WATER QUALITY FACILITIES, INCLUDING BUT NOT LIMITED TO BERMS, SPILLWAYS, BASIN BOTTOM, PIPE INVERTS, AND CONTROL STRUCTURE FEATURES (AS SURVEYED AND STAMPED BY A CERTIFIED P.L.S.). THE AS-BUILT SET SHALL ALSO INCLUDE ELEVATIONS OF MANHOLES, PIPES, INLETS, GRATES, AND SIZES OF ALL UTILITIES. THE AS-BUILT SET SHALL SHOW ANY AND ALL VARIATIONS FROM THE APPROVED PLAN. ENGINEER WILL PRODUCE FINAL RECORD DRAWINGS.



AC: 10/19/2021 2:46 PM, lat

REVISION REV 1	DATE	DRAWN BY <u>LAL</u>	DATE <u>OCTOBER 2021</u>	SCALES:
REVISION REV 2	DATE	DESIGNED BY <u>LAL/MMR</u>	DATE <u>OCTOBER 2021</u>	PLAN & PROFILE
REVISION REV 3	DATE	CHECKED BY <u>RJA</u>	DATE <u>OCTOBER 2021</u>	
REVISION REV 4	DATE	APPROVED BY <u>XXX</u>	DATE <u>XXXX</u>	



HWY50 SEWER REPLACEMENT PROJECT

LEGEND, NOTES, AND ABBREVIATIONS

G.O. 1

N:\07196\Drawings\HWY_50\07196-00-CR-LNA.dwg, 10/19/2021 - 2:46 PM, lat

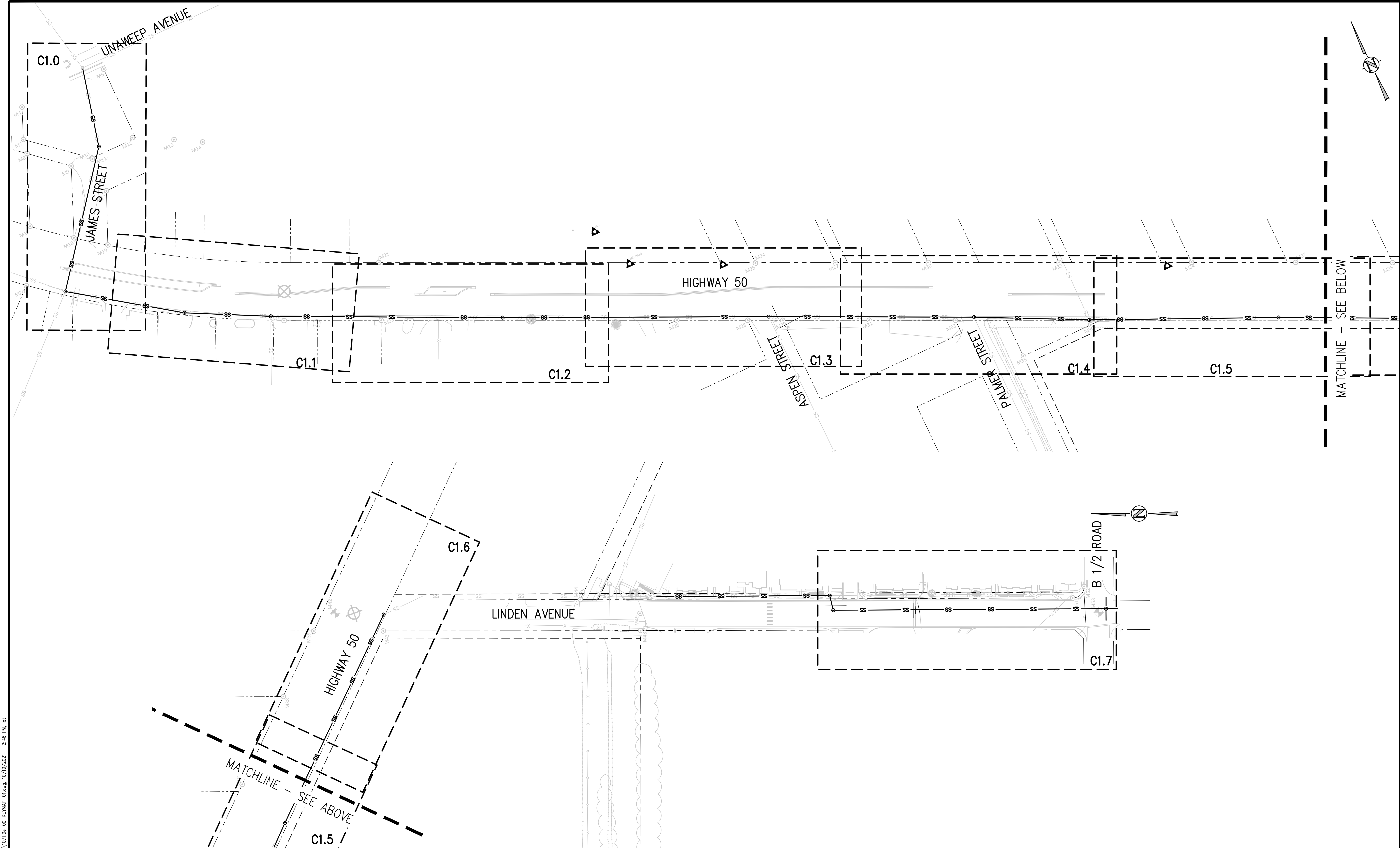
REVISION	DESCRIPTION	DATE	DRAWN BY	DATE
△ REV 1			LAL	OCTOBER 2021
△ REV 2			LAL/MMR	OCTOBER 2021
△ REV 3			RJA	OCTOBER 2021
△ REV 4			XXX	XXXX

SCALES:
PLAN & PROFILE



HWY50 SEWER REPLACEMENT PROJECT
SUMMARY OF APPROXIMATE QUANTITIES

GO.2



N:\07\06\Drawings\HWY_50\071_3a-00-65\MAP-01.dwg - 10/19/2021 - 2:46 PM, lat

REVISION	DATE	DESCRIPTION
REVISION Δ REV 1	- DATE	- DESCRIPTION
REVISION Δ REV 2	- DATE	- DESCRIPTION
REVISION Δ REV 3	- DATE	- DESCRIPTION
REVISION Δ REV 4	- DATE	- DESCRIPTION

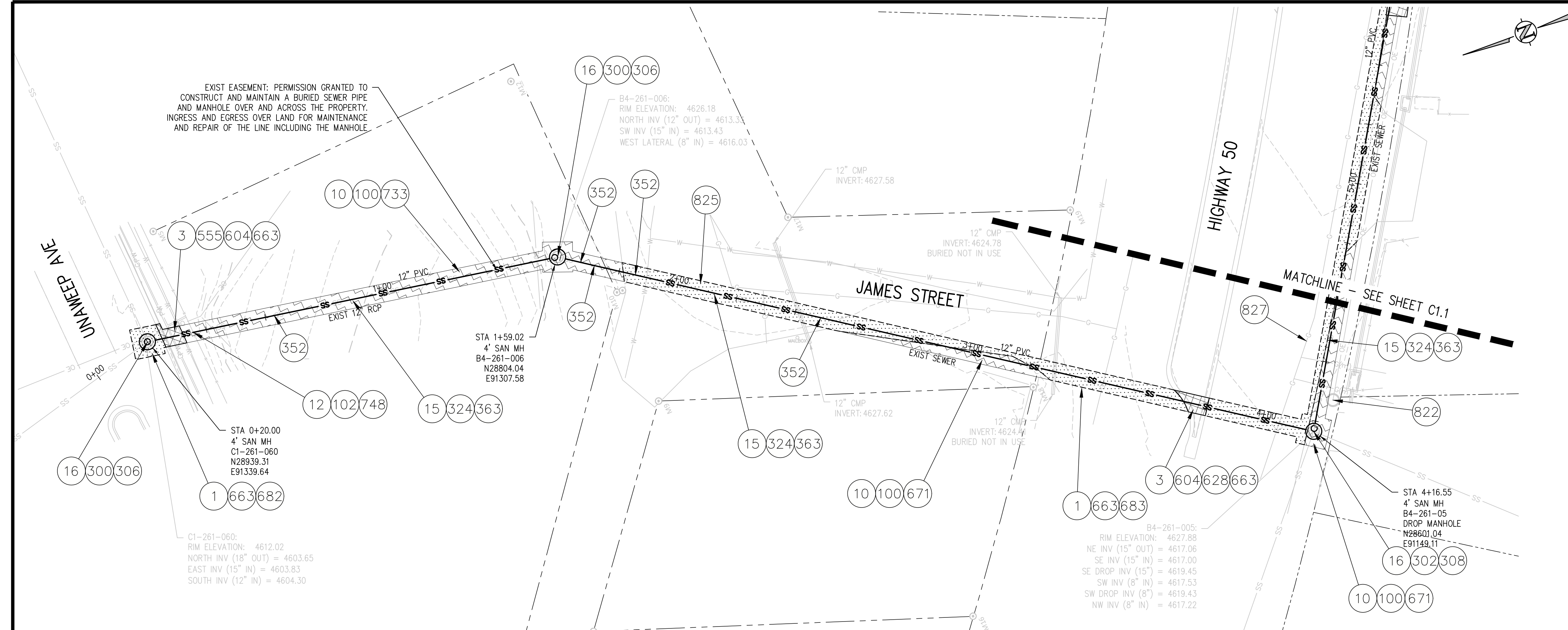
DRAWN BY	LAL	DATE	OCTOBER 2021
DESIGNED BY	LAL/MMR	DATE	OCTOBER 2021
CHECKED BY	RJA	DATE	OCTOBER 2021
APPROVED BY	XXX	DATE	XXXX

SCALES: PLAN & PROFILE
 HORIZONTAL 1"=75'



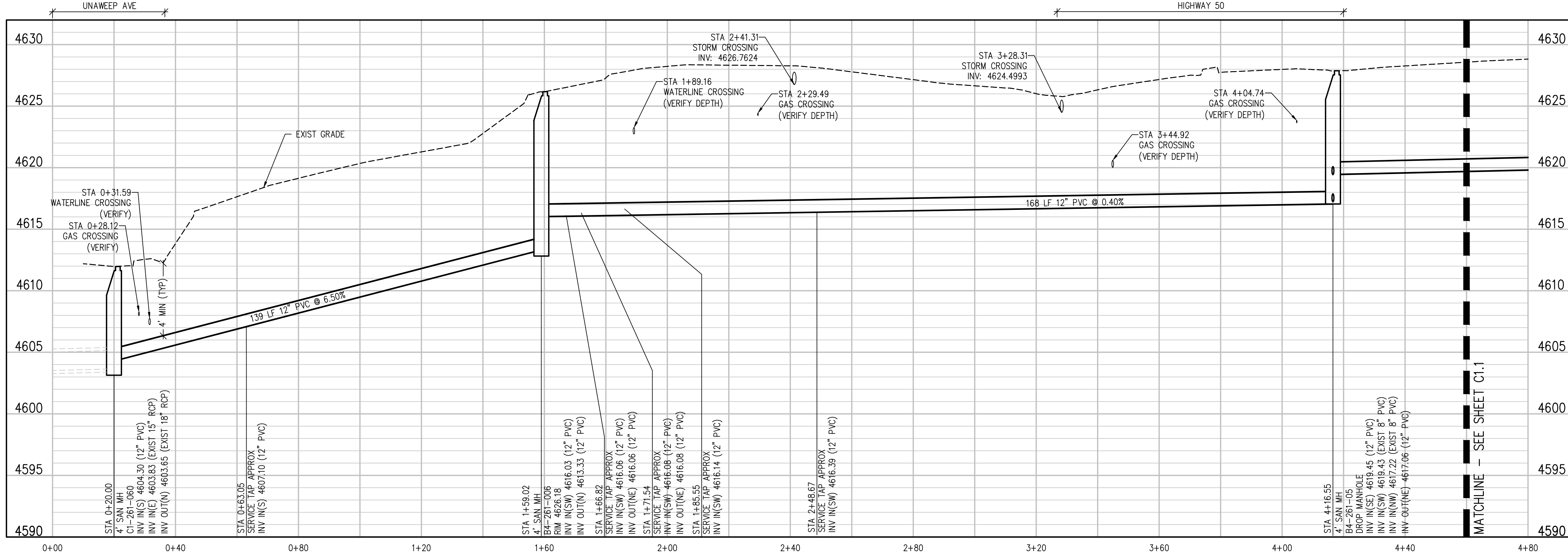
HWY50 SEWER REPLACEMENT PROJECT
 KEY MAP

G1.0



CONSTRUCTION NOTES

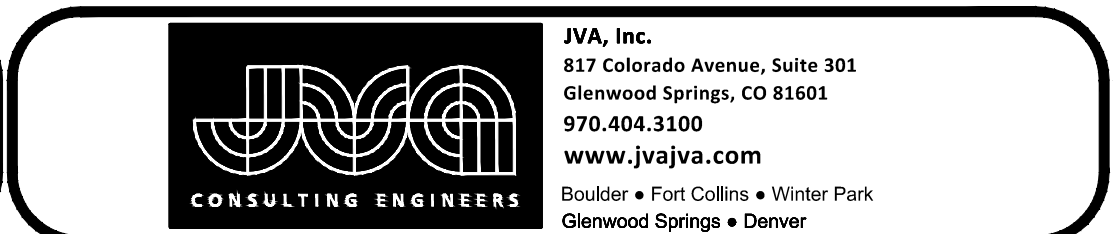
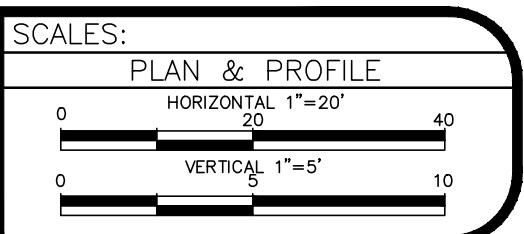
- 1 202 - REMOVAL OF ASPHALT MAT. CUT AND REMOVE ASPHALT AS SHOWN. (INDICATED BY DOT HATCH PATTERN)
- 3 202 - REMOVAL OF CONCRETE. SAW CUT AND REMOVE CONCRETE AS SHOWN. (INDICATED BY CROSS HATCH PATTERN) INCLUDES BUT NOT LIMITED TO CURB, GUTTER, SIDEWALK, DRIVEWAY, SLABS, V-PAN, CURB RAMPS, INTERSECTION CORNERS, APRONS, AND LANDSCAPE BORDERS.
- 10 202 - REMOVAL OF LANDSCAPE GROUND COVER AND ANY UNDERLYING BARRIER. STOCKPILE PER PROPERTY OWNERS RECOMMENDATION.
- 12 202 - REMOVAL OF FENCE AS SHOWN. (HEIGHT AND MATERIAL AS SHOW ON PLAN)
- 15 202 - REMOVAL OF PIPE AS SHOWN. (SIZE AND TYPE AS SHOWN ON PLAN)
- 16 202 - REMOVAL OF MANHOLE. CONTRACTOR SHALL SALVAGE RING AND COVER AND DELIVER TO CITY SHOPS.
- 100 210 - RESET LANDSCAPE GROUND COVER. CONTRACTOR SHALL REMOVE GROUND COVER AND ANY UNDERLYING WEED BARRIER AS NEEDED AND STOCKPILE MATERIALS. CONTRACTOR SHALL RESET THESE MATERIALS AND PROVIDE ADDITIONAL MATERIALS AS NEEDED TO RESTORE LANDSCAPING.
- 102 210 - RESET FENCE. (HEIGHT AND MATERIAL AS SHOW ON PLAN)
- 300 102.11/108.5 - SANITARY SEWER BASIC MANHOLE (48" I.D.). INCLUDES CONNECTION OF ADJACENT SEWER LINE, FORMING INVERTS AND ADJUSTING TO FINAL GRADE. (SEE CITY OF GRAND JUNCTION STANDARD DETAIL SS-02).
- 302 102.11/108.5 - SANITARY SEWER BASIC DROP MANHOLE (48" I.D.). INCLUDES MANHOLE COATING AS PER 102.11. (SEE STD. DETAIL SS-04).
- 306 102.11/108.5 - MANHOLE BARREL SECTION (D>5") (48" I.D.)
- 308 102.11/108.5 - DROP MANHOLE BARREL SECTION (D>5") (48" I.D.)
- 324 102.9/108.2 - 12" GRAVITY SEWER PIPE (SDR 35 PVC). INCLUDES TYPE A BEDDING AND HAUNCHING MATERIAL AND BACKFILL OF TRENCH WITH NATIVE MATERIALS MEETING 103.16 EARTH BACKFILL MATERIAL.
- 352 102.9/108.3 - 12"x4" SEWER SERVICE TAP. TAPPING SADDLE WITH STAINLESS STEEL STRAPS (SEE STD. DETAIL SS-06).
- 363 BYPASS PUMPING WILL BE REQUIRED FOR CONSTRUCTION.
- 555 608.06 - CONCRETE SIDEWALK (4" THICK) (MATCH EXISTING WIDTH)
- 604 608.06 - CONCRETE CURB AND GUTTER (MATCH EXISTING WIDTH)
- 628 610 - MEDIAN COVER MATERIAL (COLORED CONCRETE) (___" THICK)
- 663 304 - AGGREGATE BASE COURSE (CLASS 6) (6" THICK)
- 671 304 - WASHED ROCK SURFACE COURSE FOR GRAVEL DRIVEWAYS. MATCH EXISTING TYPE. THICKNESS IS 2" MIN. AND 3" MAX.
- 683 401.08 - HOT BITUMINOUS PAVEMENT (PATCHING) (6" THICK) (GRADING SX, BINDER GRADE PG 64-22) (THREE 2" LIFTS)
- 733 212 - HYDROSEED WITH NATIVE SEED MIX.
- 748 607 - FENCE (CHAINLINK) (6' HEIGHT)
- 822 PROTECT LIGHT POLE.
- 825 CONTRACTOR IS RESPONSIBLE FOR REPAIR COSTS ASSOCIATED WITH ANY/ALL DAMAGE TO PRIVATE PROPERTY BEHIND ROW LINE OR EASEMENT LIMITS.
- 827 PROTECT EXISTING GAS.



A:\0719\Drawings\HWY 50\0719-01-SAN-PMP-01.dwg, 10/19/2021, 2:47 PM, lal

REVISION	DESCRIPTION	DATE
REV 1		
REV 2		
REV 3		
REV 4		

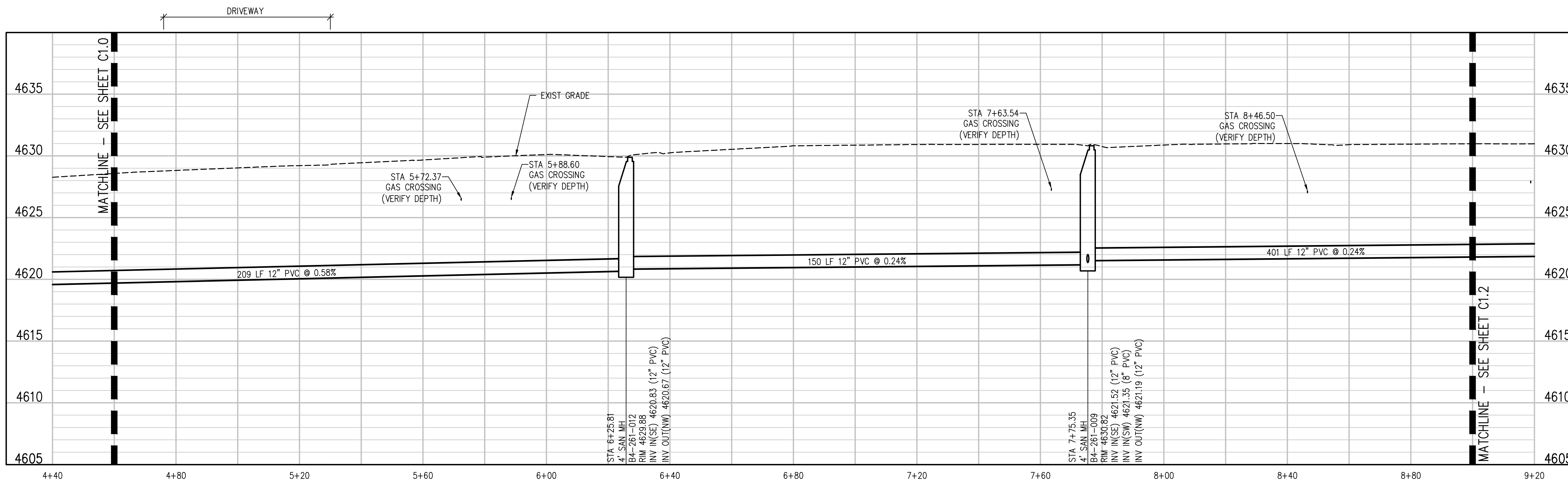
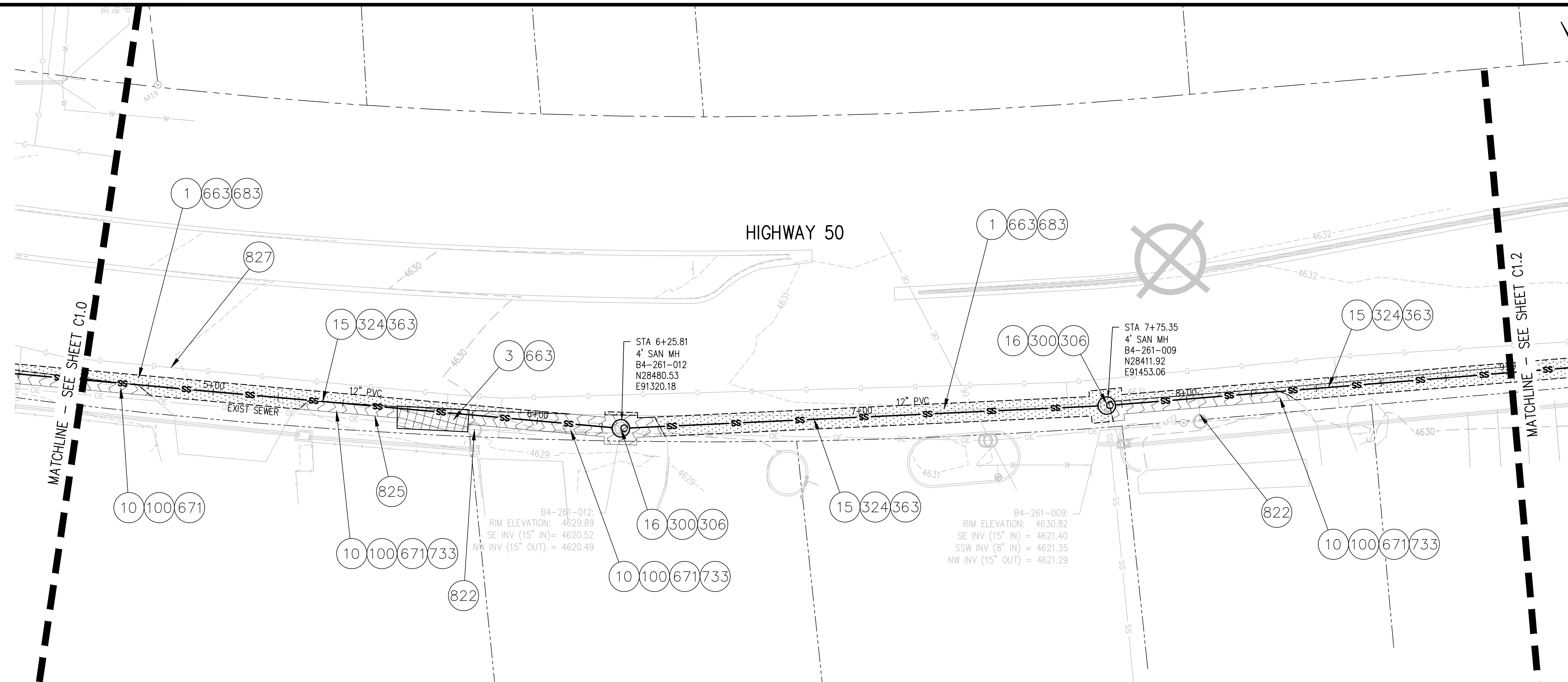
DRAWN BY	LAL	DATE	OCTOBER 2021
DESIGNED BY	LAL/MMR	DATE	OCTOBER 2021
CHECKED BY	RJA	DATE	OCTOBER 2021
APPROVED BY	XXX	DATE	XXXX



HWY50 SEWER REPLACEMENT PROJECT
SANITARY PLAN AND PROFILE
C1.0

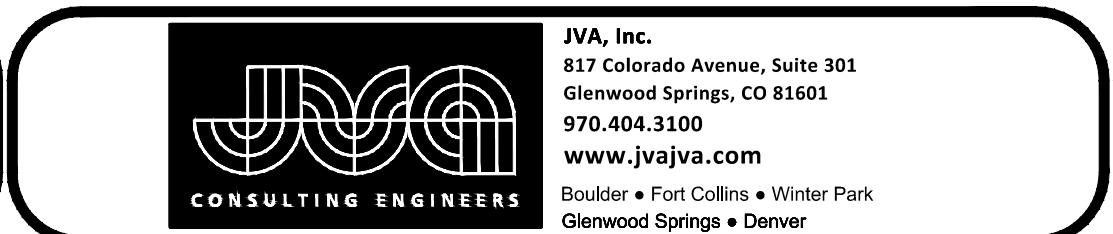
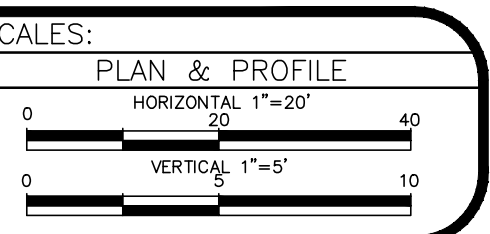
CONSTRUCTION NOTES

- 1 202 - REMOVAL OF ASPHALT MAT. CUT AND REMOVE ASPHALT AS SHOWN. (INDICATED BY DOT HATCH PATTERN)
- 3 202 - REMOVAL OF CONCRETE. SAW CUT AND REMOVE CONCRETE AS SHOWN. (INDICATED BY CROSS HATCH PATTERN) INCLUDES BUT NOT LIMITED TO CURB, GUTTER, SIDEWALK, DRIVEWAY, SLABS, V-PAN, CURB RAMPS, INTERSECTION CORNERS, APRONS, AND LANDSCAPE BORDERS.
- 10 202 - REMOVAL OF LANDSCAPE GROUND COVER AND ANY UNDERLYING BARRIER. STOCKPILE PER PROPERTY OWNERS RECOMMENDATION.
- 15 202 - REMOVAL OF PIPE AS SHOWN. (SIZE AND TYPE AS SHOWN ON PLAN)
- 16 202 - REMOVAL OF MANHOLE. CONTRACTOR SHALL SALVAGE RING AND COVER AND DELIVER TO CITY SHOPS.
- 100 210 - RESET LANDSCAPE GROUND COVER. CONTRACTOR SHALL REMOVE GROUND COVER AND ANY UNDERLYING WEED BARRIER AS NEEDED AND STOCKPILE MATERIALS. CONTRACTOR SHALL RESET THESE MATERIALS AND PROVIDE ADDITIONAL MATERIALS AS NEEDED TO RESTORE LANDSCAPING.
- 300 102.11/108.5 - SANITARY SEWER BASIC MANHOLE (48" I.D.). INCLUDES CONNECTION OF ADJACENT SEWER LINE, FORMING INVERTS AND ADJUSTING TO FINAL GRADE. (SEE CITY OF GRAND JUNCTION STANDARD DETAIL SS-02).
- 306 102.11/108.5 - MANHOLE BARREL SECTION (D>5") (48" I.D.)
- 324 102.9/108.2 - 12" GRAVITY SEWER PIPE (SDR 35 PVC). INCLUDES TYPE A BEDDING AND HAUNCHING MATERIAL AND BACKFILL OF TRENCH WITH NATIVE MATERIALS MEETING 103.16 EARTH BACKFILL MATERIAL.
- 363 BYPASS PUMPING WILL BE REQUIRED FOR CONSTRUCTION.
- 663 304 - AGGREGATE BASE COURSE (CLASS 6) (6" THICK)
- 671 304 - WASHED ROCK SURFACE COURSE FOR GRAVEL DRIVEWAYS. MATCH EXISTING TYPE. THICKNESS IS 2" MIN. AND 3" MAX.
- 683 401.08 - HOT BITUMINOUS PAVEMENT (PATCHING) (6" THICK) (GRADING SX, BINDER GRADE PG 64-22) (THREE 2" LIFTS)
- 733 212 - HYDROSEED WITH NATIVE SEED MIX.
- 822 PROTECT LIGHT POLE.
- 825 CONTRACTOR IS RESPONSIBLE FOR REPAIR COSTS ASSOCIATED WITH ANY/ALL DAMAGE TO PRIVATE PROPERTY BEHIND ROW LINE OR EASEMENT LIMITS.
- 827 PROTECT EXISTING GAS.



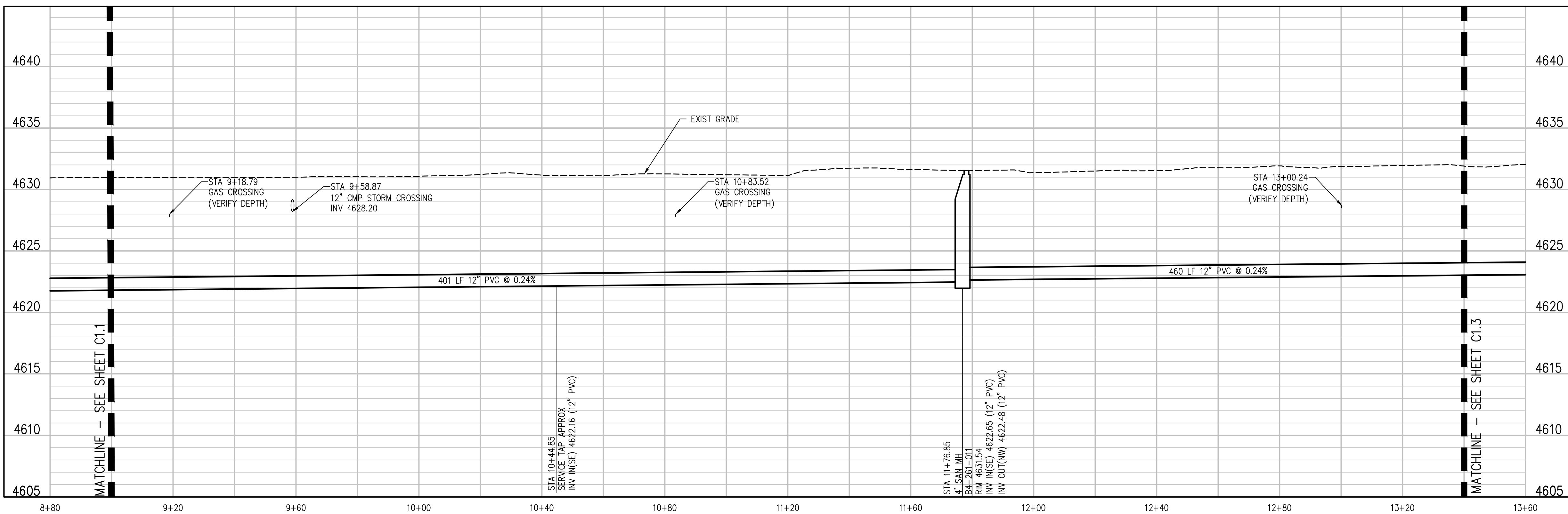
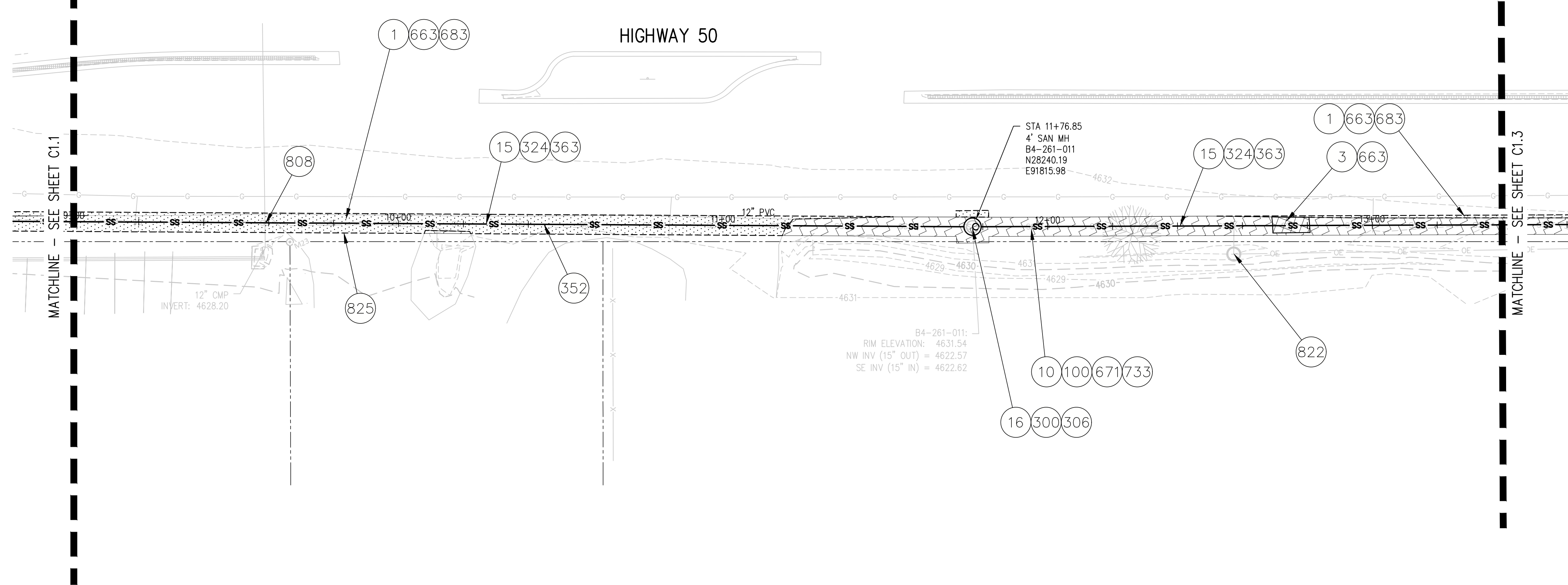
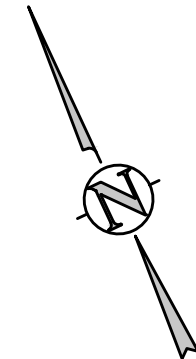
N:\07156\Drawings\HWY 50\107156-01-SAN-PWP-01.dwg, 10/19/2021, 2:47 PM, lal

REVISION	DESCRIPTION	DATE	DRAWN BY	DATE
REV 1			LAL	OCTOBER 2021
REV 2			LAL/MMR	OCTOBER 2021
REV 3			RJA	OCTOBER 2021
REV 4			XXX	XXXX



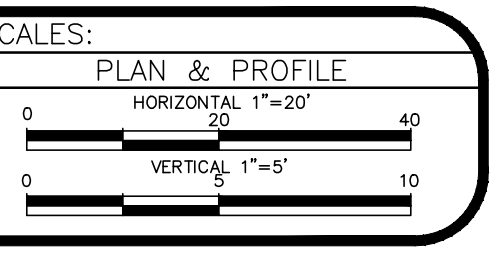
CONSTRUCTION NOTES

- 1 202 - REMOVAL OF ASPHALT MAT. CUT AND REMOVE ASPHALT AS SHOWN. (INDICATED BY DOT HATCH PATTERN)
- 3 202 - REMOVAL OF CONCRETE. SAW CUT AND REMOVE CONCRETE AS SHOWN. (INDICATED BY CROSS HATCH PATTERN) INCLUDES BUT NOT LIMITED TO CURB, GUTTER, SIDEWALK, DRIVEWAY, SLABS, V-PAN, CURB RAMPS, INTERSECTION CORNERS, APRONS, AND LANDSCAPE BORDERS.
- 10 202 - REMOVAL OF LANDSCAPE GROUND COVER AND ANY UNDERLYING BARRIER. STOCKPILE PER PROPERTY OWNERS RECOMMENDATION.
- 15 202 - REMOVAL OF PIPE AS SHOWN. (SIZE AND TYPE AS SHOWN ON PLAN)
- 16 202 - REMOVAL OF MANHOLE. CONTRACTOR SHALL SALVAGE RING AND COVER AND DELIVER TO CITY SHOPS.
- 100 210 - RESET LANDSCAPE GROUND COVER. CONTRACTOR SHALL REMOVE GROUND COVER AND ANY UNDERLYING WEED BARRIER AS NEEDED AND STOCKPILE MATERIALS. CONTRACTOR SHALL RESET THESE MATERIALS AND PROVIDE ADDITIONAL MATERIALS AS NEEDED TO RESTORE LANDSCAPING.
- 300 102.11/108.5 - SANITARY SEWER BASIC MANHOLE (48" I.D.). INCLUDES CONNECTION OF ADJACENT SEWER LINE, FORMING INVERTS AND ADJUSTING TO FINAL GRADE. (SEE CITY OF GRAND JUNCTION STANDARD DETAIL SS-02).
- 306 102.11/108.5 - MANHOLE BARREL SECTION (D>5") (48" I.D.)
- 324 102.9/108.2 - 12" GRAVITY SEWER PIPE (SDR 35 PVC). INCLUDES TYPE A BEDDING AND HAUNCHING MATERIAL AND BACKFILL OF TRENCH WITH NATIVE MATERIALS MEETING 103.16 EARTH BACKFILL MATERIAL.
- 352 102.9/108.3 - 12"x4" SEWER SERVICE TAP. TAPPING SADDLE WITH STAINLESS STEEL STRAPS (SEE STD. DETAIL SS-06).
- 363 BYPASS PUMPING WILL BE REQUIRED FOR CONSTRUCTION.
- 663 304 - AGGREGATE BASE COURSE (CLASS 6) (6" THICK)
- 671 304 - WASHED ROCK SURFACE COURSE FOR GRAVEL DRIVEWAYS. MATCH EXISTING TYPE. THICKNESS IS 2" MIN. AND 3" MAX.
- 683 401.08 - HOT BITUMINOUS PAVEMENT (PATCHING) (6" THICK) (GRADING SX, BINDER GRADE PG 64-22) (THREE 2" LIFTS)
- 733 212 - HYDROSEED WITH NATIVE SEED MIX.
- 808 SPAN/SUPPORT/PROTECT EXISTING STORMWATER/IRRIGATION CULVERT. AMEND BACKFILL WITH BENTONITE POND LINER (MIXED AS PER MFG. SPECIFICATIONS) FOR PLACEMENT AROUND CULVERT (2" ALL SIDES OF PIPE OVER EXPOSED LENGTH) DURING BACKFILL OPERATION.
- 822 PROTECT LIGHT POLE.
- 825 CONTRACTOR IS RESPONSIBLE FOR REPAIR COSTS ASSOCIATED WITH ANY/ALL DAMAGE TO PRIVATE PROPERTY BEHIND ROW LINE OR EASEMENT LIMITS.



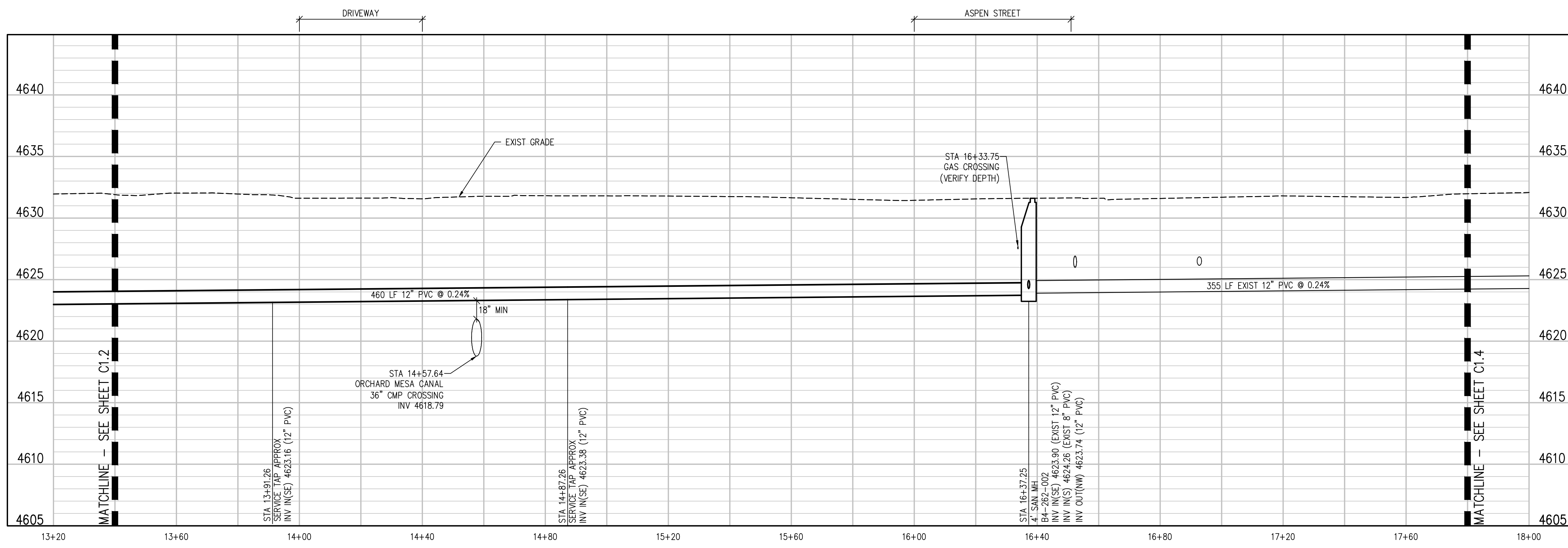
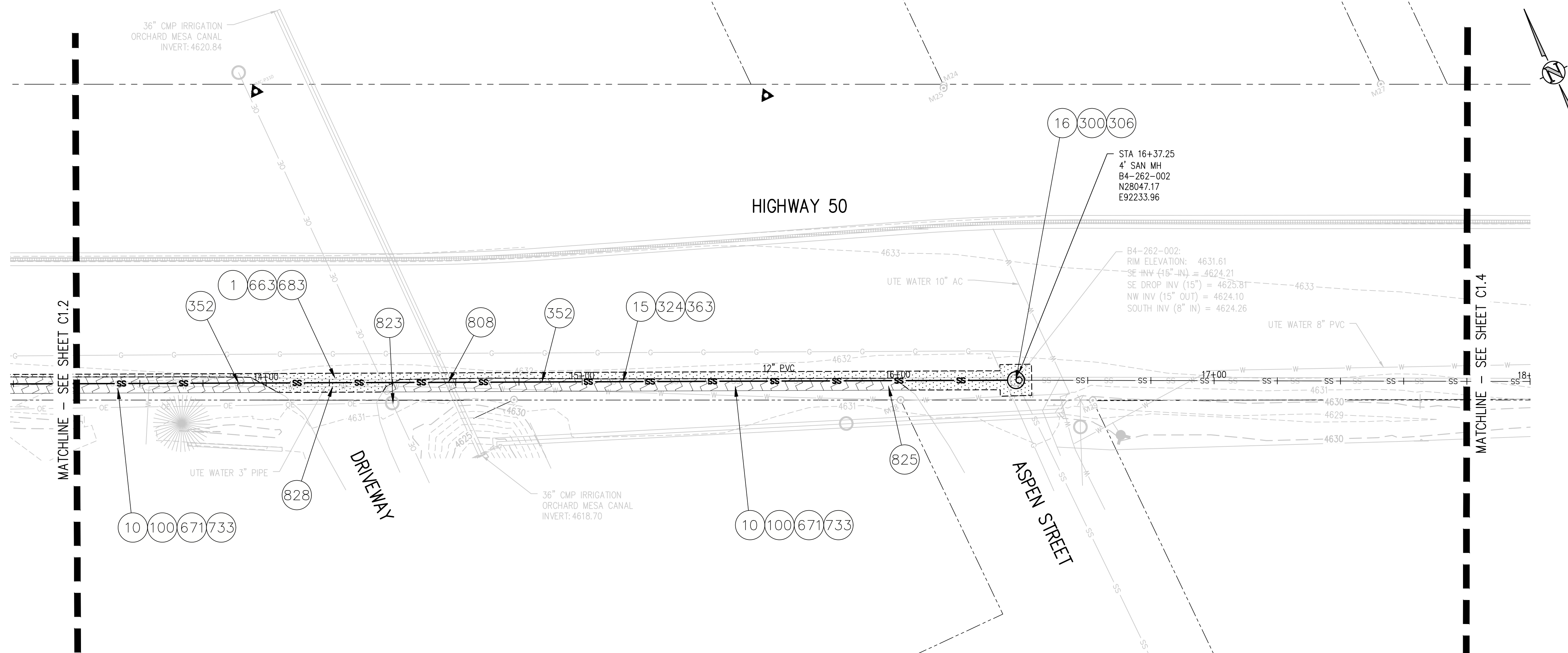
N:\07156\Drawings\HWY 50\107156-01-SAN-PPR-01.dwg, 10/19/2021, 2:47 PM, lal

REVISION	DESCRIPTION	DATE	DRAWN BY	DATE
REV 1			LAL	OCTOBER 2021
REV 2			LAL/MMR	OCTOBER 2021
REV 3			RJA	OCTOBER 2021
REV 4			XXX	XXXX



CONSTRUCTION NOTES

- 1 202 - REMOVAL OF ASPHALT MAT. CUT AND REMOVE ASPHALT AS SHOWN. (INDICATED BY DOT HATCH PATTERN)
- 10 202 - REMOVAL OF LANDSCAPE GROUND COVER AND ANY UNDERLYING BARRIER. STOCKPILE PER PROPERTY OWNERS RECOMMENDATION.
- 15 202 - REMOVAL OF PIPE AS SHOWN. (SIZE AND TYPE AS SHOWN ON PLAN)
- 16 202 - REMOVAL OF MANHOLE. CONTRACTOR SHALL SALVAGE RING AND COVER AND DELIVER TO CITY SHOPS.
- 100 210 - RESET LANDSCAPE GROUND COVER. CONTRACTOR SHALL REMOVE GROUND COVER AND ANY UNDERLYING WEED BARRIER AS NEEDED AND STOCKPILE MATERIALS. CONTRACTOR SHALL RESET THESE MATERIALS AND PROVIDE ADDITIONAL MATERIALS AS NEEDED TO RESTORE LANDSCAPING.
- 300 102.11/108.5 - SANITARY SEWER BASIC MANHOLE (48" I.D.). INCLUDES CONNECTION OF ADJACENT SEWER LINE, FORMING INVERTS AND ADJUSTING TO FINAL GRADE. (SEE CITY OF GRAND JUNCTION STANDARD DETAIL SS-02).
- 306 102.11/108.5 - MANHOLE BARREL SECTION (D>5") (48" I.D.)
- 324 102.9/108.2 - 12" GRAVITY SEWER PIPE (SDR 35 PVC). INCLUDES TYPE A BEDDING AND HAUNCHING MATERIAL AND BACKFILL OF TRENCH WITH NATIVE MATERIALS MEETING 103.16 EARTH BACKFILL MATERIAL.
- 352 102.9/108.3 - 12"X4" SEWER SERVICE TAP. TAPPING SADDLE WITH STAINLESS STEEL STRAPS (SEE STD. DETAIL SS-06).
- 363 BYPASS PUMPING WILL BE REQUIRED FOR CONSTRUCTION.
- 663 304 - AGGREGATE BASE COURSE (CLASS 6) (6" THICK)
- 671 304 - WASHED ROCK SURFACE COURSE FOR GRAVEL DRIVEWAYS. MATCH EXISTING TYPE. THICKNESS IS 2" MIN. AND 3" MAX.
- 683 401.08 - HOT BITUMINOUS PAVEMENT (PATCHING) (6" THICK) (GRADING SX, BINDER GRADE PG 64-22) (THREE 2" LIFTS)
- 733 212 - HYDROSEED WITH NATIVE SEED MIX.
- 808 SPAN/SUPPORT/PROTECT EXISTING STORMWATER/IRRIGATION CULVERT. AMEND BACKFILL WITH BENTONITE POND LINER (MIXED AS PER MFG. SPECIFICATIONS) FOR PLACEMENT AROUND CULVERT (2" ALL SIDES OF PIPE OVER EXPOSED LENGTH) DURING BACKFILL OPERATION.
- 823 PROTECT LIGHT POLE.
- 825 CONTRACTOR IS RESPONSIBLE FOR REPAIR COSTS ASSOCIATED WITH ANY/ALL DAMAGE TO PRIVATE PROPERTY BEHIND ROW LINE OR EASEMENT LIMITS.
- 828 PROTECT UTE WATER WATERLINE.



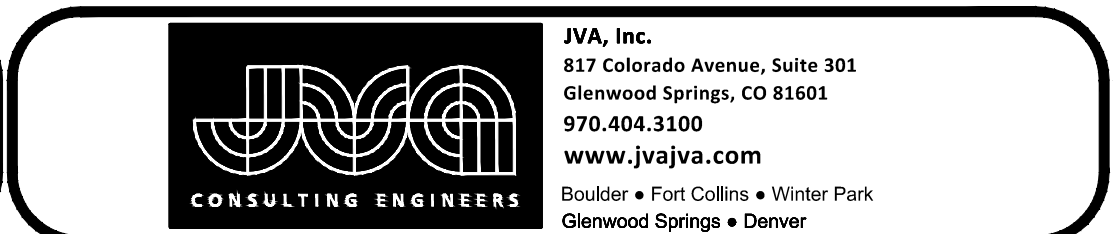
A:\107156\Drawings\HWY 50\107156-01-SAN-PWP-01.dwg, 10/19/2021, 2:47 PM, lal

REVISION	DESCRIPTION	DATE
REV 1		
REV 2		
REV 3		
REV 4		

DRAWN BY	LAL	DATE	OCTOBER 2021
DESIGNED BY	LAL/MMR	DATE	OCTOBER 2021
CHECKED BY	RJA	DATE	OCTOBER 2021
APPROVED BY	XXX	DATE	XXXX

SCALES:

PLAN & PROFILE
 HORIZONTAL 1"=20'
 VERTICAL 1"=5'

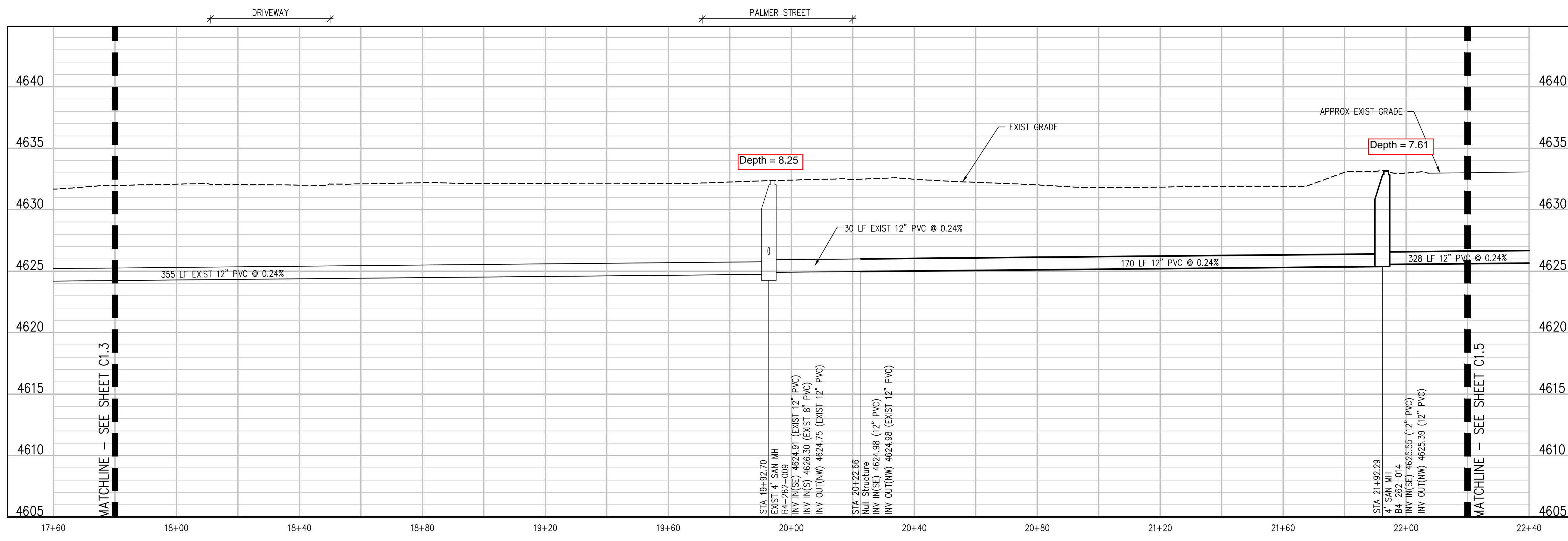
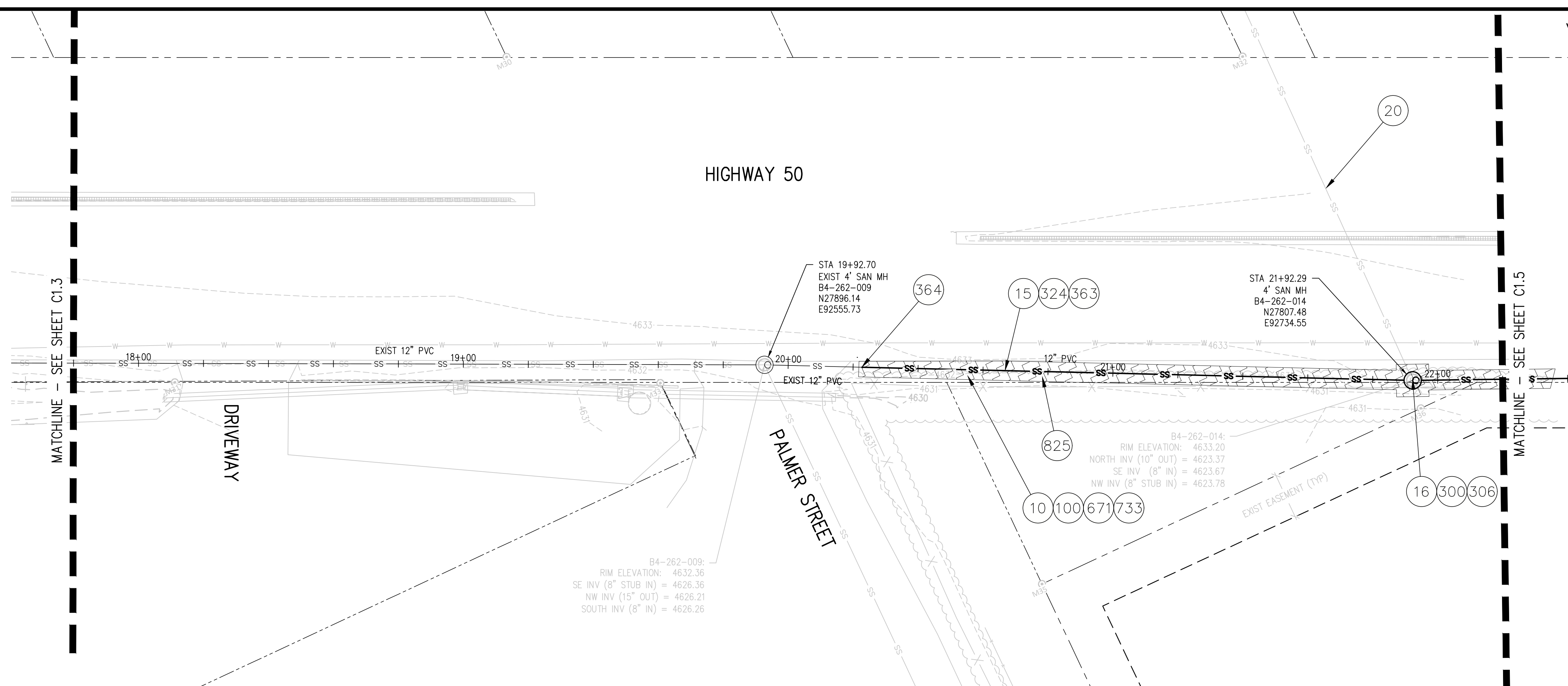


HWY50 SEWER REPLACEMENT PROJECT
 SANITARY PLAN AND PROFILE

C1.3

CONSTRUCTION NOTES

- 10 202 - REMOVAL OF LANDSCAPE GROUND COVER AND ANY UNDERLYING BARRIER. STOCKPILE PER PROPERTY OWNERS RECOMMENDATION.
- 15 202 - REMOVAL OF PIPE AS SHOWN. (SIZE AND TYPE AS SHOWN ON PLAN)
- 16 202 - REMOVAL OF MANHOLE. CONTRACTOR SHALL SALVAGE RING AND COVER AND DELIVER TO CITY SHOPS.
- 20 202 - ABANDON PIPE. ABANDON BY PLUGGING REMAINING ENDS WITH CONCRETE.
- 100 210 - RESET LANDSCAPE GROUND COVER. CONTRACTOR SHALL REMOVE GROUND COVER AND ANY UNDERLYING WEED BARRIER AS NEEDED AND STOCKPILE MATERIALS. CONTRACTOR SHALL RESET THESE MATERIALS AND PROVIDE ADDITIONAL MATERIALS AS NEEDED TO RESTORE LANDSCAPING.
- 300 102.11/108.5 - SANITARY SEWER BASIC MANHOLE (48" I.D.). INCLUDES CONNECTION OF ADJACENT SEWER LINE, FORMING INVERTS AND ADJUSTING TO FINAL GRADE. (SEE CITY OF GRAND JUNCTION STANDARD DETAIL SS-02).
- 306 102.11/108.5 - MANHOLE BARREL SECTION (D>5') (48" I.D.)
- 324 102.9/108.2 - 12" GRAVITY SEWER PIPE (SDR 35 PVC). INCLUDES TYPE A BEDDING AND HAUNCHING MATERIAL AND BACKFILL OF TRENCH WITH NATIVE MATERIALS MEETING 103.16 EARTH BACKFILL MATERIAL.
- 363 BYPASS PUMPING WILL BE REQUIRED FOR CONSTRUCTION.
- 364 CONNECT TO EXISTING SEWER PIPE. THE CONTRACT PRICE FOR SEWER PIPE SHALL INCLUDE THE COST OF CONNECTION TO EXISTING PIPELINE
- 671 304 - WASHED ROCK SURFACE COURSE FOR GRAVEL DRIVEWAYS. MATCH EXISTING TYPE. THICKNESS IS 2" MIN. AND 3" MAX.
- 733 212 - HYDROSEED WITH NATIVE SEED MIX.
- 825 CONTRACTOR IS RESPONSIBLE FOR REPAIR COSTS ASSOCIATED WITH ANY/ALL DAMAGE TO PRIVATE PROPERTY BEHIND ROW LINE OR EASEMENT LIMITS.

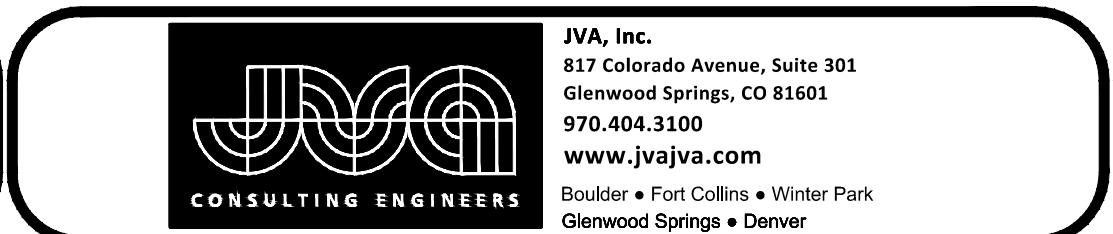


A:\107156\Drawings\HWY 50\107156-01-SAN-PMP-01.dwg, 10/19/2021, 2:47 PM, lal

REVISION	DESCRIPTION	DATE	DRAWN BY	DATE
REV 1			LAL	OCTOBER 2021
REV 2			LAL/MMR	OCTOBER 2021
REV 3			RJA	OCTOBER 2021
REV 4			XXX	XXXX

SCALES:

PLAN & PROFILE
 HORIZONTAL 1"=20'
 VERTICAL 1"=5'

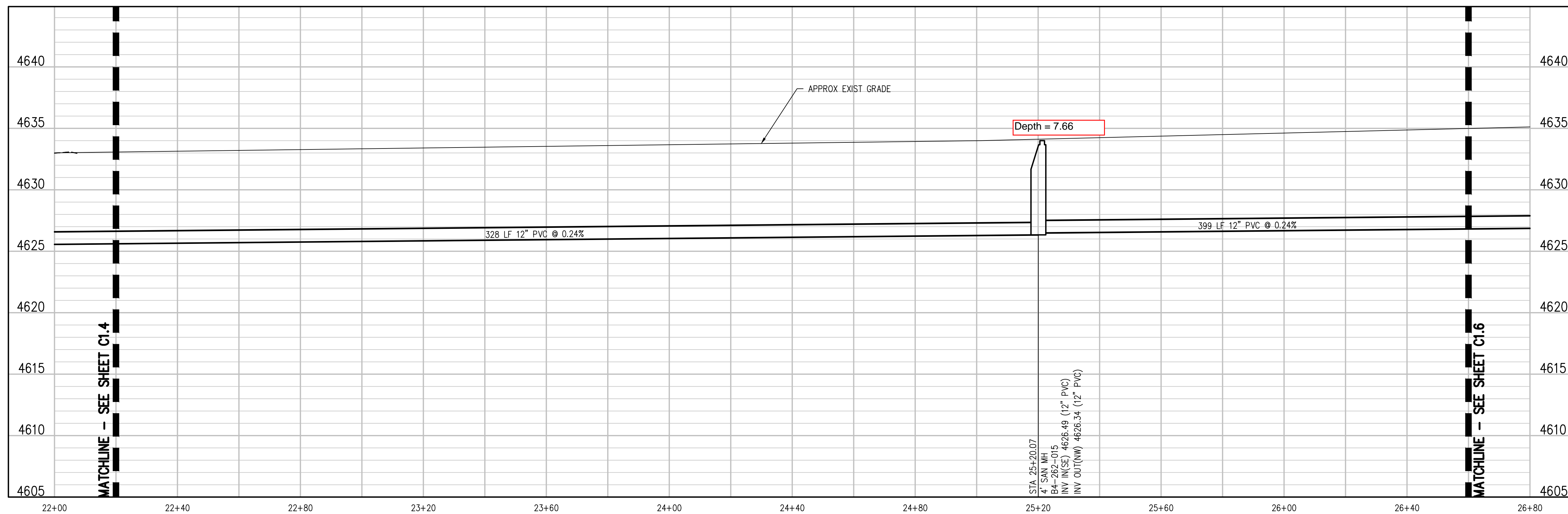
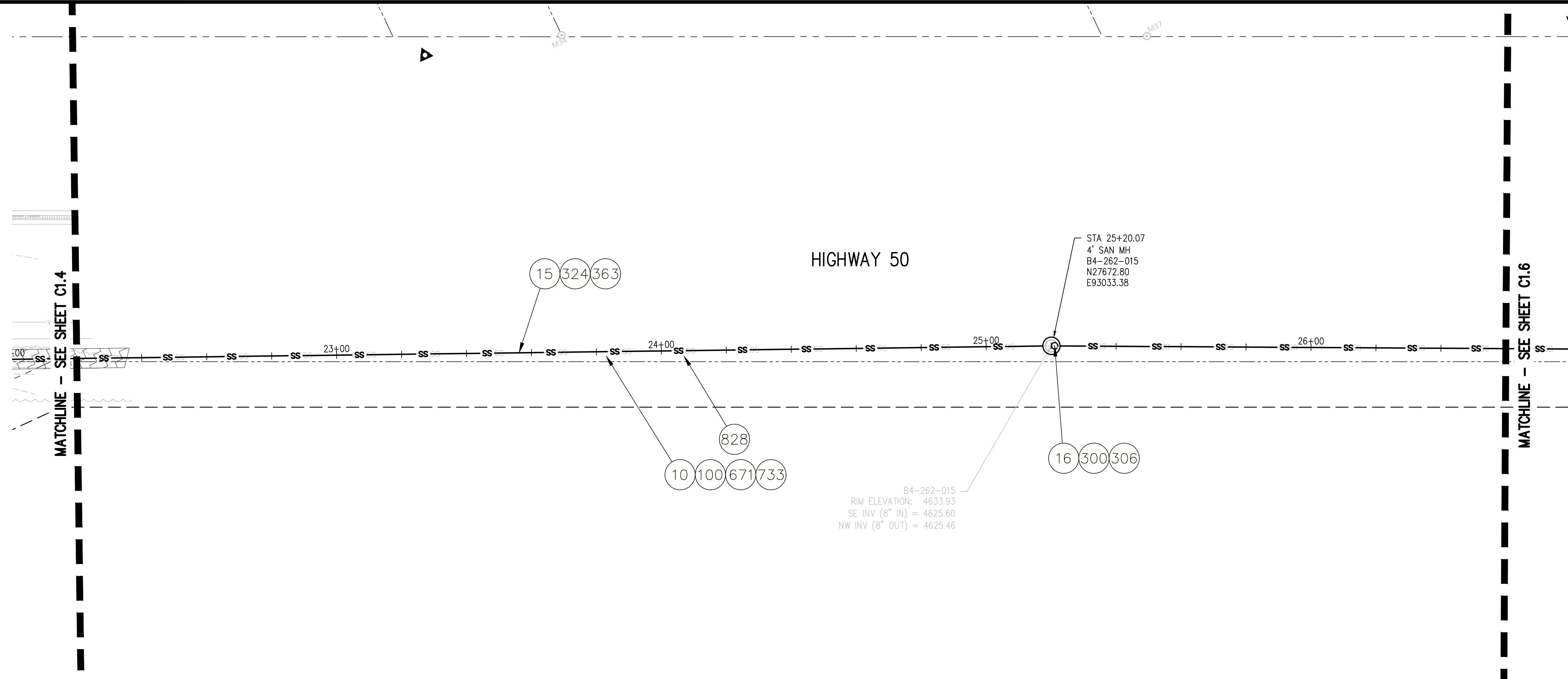


HWY50 SEWER REPLACEMENT PROJECT

SANITARY PLAN AND PROFILE

CONSTRUCTION NOTES

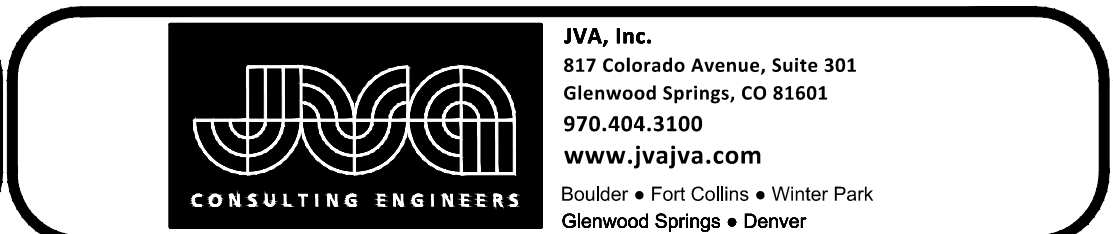
- 1 202 - REMOVAL OF ASPHALT MAT. CUT AND REMOVE ASPHALT AS SHOWN. (INDICATED BY DOT HATCH PATTERN)
- 10 202 - REMOVAL OF LANDSCAPE GROUND COVER AND ANY UNDERLYING BARRIER. STOCKPILE PER PROPERTY OWNERS RECOMMENDATION.
- 15 202 - REMOVAL OF PIPE AS SHOWN. (SIZE AND TYPE AS SHOWN ON PLAN)
- 16 202 - REMOVAL OF MANHOLE. CONTRACTOR SHALL SALVAGE RING AND COVER AND DELIVER TO CITY SHOPS.
- 100 210 - RESET LANDSCAPE GROUND COVER. CONTRACTOR SHALL REMOVE GROUND COVER AND ANY UNDERLYING WEED BARRIER AS NEEDED AND STOCKPILE MATERIALS. CONTRACTOR SHALL RESET THESE MATERIALS AND PROVIDE ADDITIONAL MATERIALS AS NEEDED TO RESTORE LANDSCAPING.
- 300 102.11/108.5 - SANITARY SEWER BASIC MANHOLE (48" I.D.). INCLUDES CONNECTION OF ADJACENT SEWER LINE, FORMING INVERTS AND ADJUSTING TO FINAL GRADE. (SEE CITY OF GRAND JUNCTION STANDARD DETAIL SS-02).
- 306 102.11/108.5 - MANHOLE BARREL SECTION (D>5") (48" I.D.)
- 324 102.9/108.2 - 12" GRAVITY SEWER PIPE (SDR 35 PVC). INCLUDES TYPE A BEDDING AND HAUNCHING MATERIAL AND BACKFILL OF TRENCH WITH NATIVE MATERIALS MEETING 103.16 EARTH BACKFILL MATERIAL.
- 352 102.9/108.3 - 12"x4" SEWER SERVICE TAP. TAPPING SADDLE WITH STAINLESS STEEL STRAPS (SEE STD. DETAIL SS-06).
- 363 BYPASS PUMPING WILL BE REQUIRED FOR CONSTRUCTION.
- 663 304 - AGGREGATE BASE COURSE (CLASS 6) (6" THICK)
- 671 304 - WASHED ROCK SURFACE COURSE FOR GRAVEL DRIVEWAYS. MATCH EXISTING TYPE. THICKNESS IS 2" MIN. AND 3" MAX.
- 883 401.08 - HOT BITUMINOUS PAVEMENT (PATCHING) (6" THICK) (GRADING SX, BINDER GRADE PG 64-22) (THREE 2" LIFTS)
- 733 212 - HYDROSEED WITH NATIVE SEED MIX.
- 808 SPAN/SUPPORT/PROTECT EXISTING STORMWATER/IRRIGATION CULVERT. AMEND BACKFILL WITH BENTONITE POND LINER (MIXED AS PER MFG. SPECIFICATIONS) FOR PLACEMENT AROUND CULVERT (2" ALL SIDES OF PIPE OVER EXPOSED LENGTH) DURING BACKFILL OPERATION.
- 823 PROTECT LIGHT POLE.
- 825 CONTRACTOR IS RESPONSIBLE FOR REPAIR COSTS ASSOCIATED WITH ANY/ALL DAMAGE TO PRIVATE PROPERTY BEHIND ROW LINE OR EASEMENT LIMITS.
- 828 PROTECT UTE WATER WATERLINE.



N:\07196\Drawings\HWY 50\107196-01-SAN-P&P-01.dwg, 10/19/2021, 2:47 PM, lal

REVISION	DESCRIPTION	DATE	DRAWN BY	DATE
REV 1			LAL	OCTOBER 2021
REV 2			LAL/MMR	OCTOBER 2021
REV 3			RJA	OCTOBER 2021
REV 4			XXX	XXXX

SCALES:
 PLAN & PROFILE
 HORIZONTAL 1"=20'
 VERTICAL 1"=5'

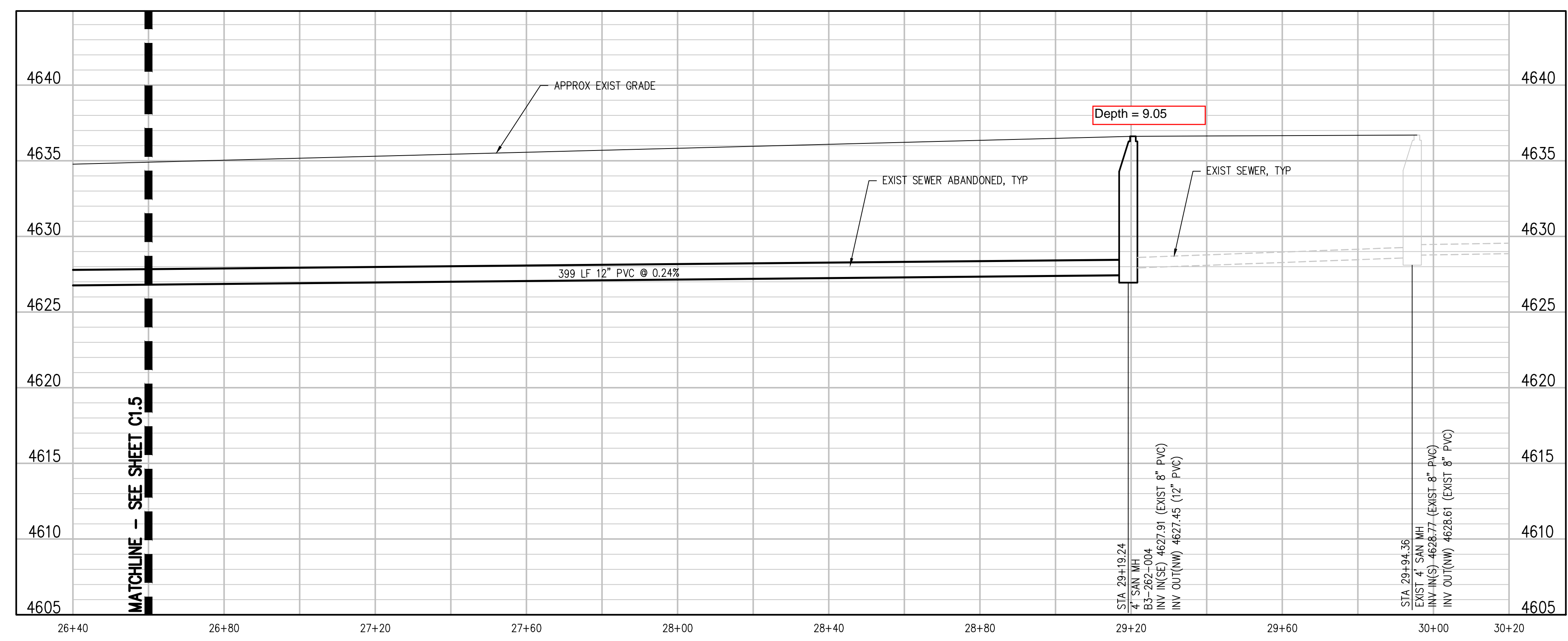
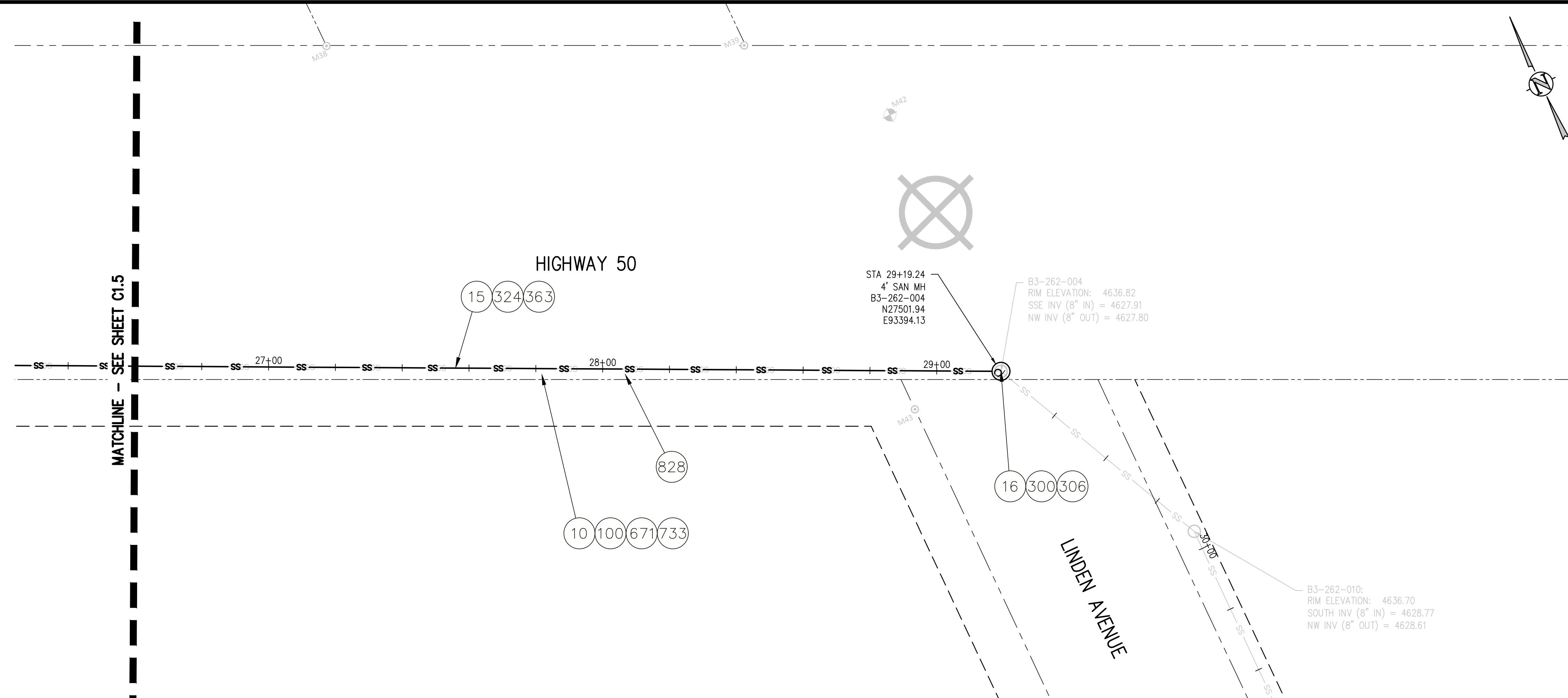


HWY50 SEWER REPLACEMENT PROJECT
SANITARY PLAN AND PROFILE

C1.5

CONSTRUCTION NOTES

- 1 202 - REMOVAL OF ASPHALT MAT. CUT AND REMOVE ASPHALT AS SHOWN. (INDICATED BY DOT HATCH PATTERN)
- 10 202 - REMOVAL OF LANDSCAPE GROUND COVER AND ANY UNDERLYING BARRIER. STOCKPILE PER PROPERTY OWNERS RECOMMENDATION.
- 15 202 - REMOVAL OF PIPE AS SHOWN. (SIZE AND TYPE AS SHOWN ON PLAN)
- 16 202 - REMOVAL OF MANHOLE. CONTRACTOR SHALL SALVAGE RING AND COVER AND DELIVER TO CITY SHOPS.
- 100 210 - RESET LANDSCAPE GROUND COVER. CONTRACTOR SHALL REMOVE GROUND COVER AND ANY UNDERLYING WEED BARRIER AS NEEDED AND STOCKPILE MATERIALS. CONTRACTOR SHALL RESET THESE MATERIALS AND PROVIDE ADDITIONAL MATERIALS AS NEEDED TO RESTORE LANDSCAPING.
- 300 102.11/108.5 - SANITARY SEWER BASIC MANHOLE (48" I.D.). INCLUDES CONNECTION OF ADJACENT SEWER LINE, FORMING INVERTS AND ADJUSTING TO FINAL GRADE. (SEE CITY OF GRAND JUNCTION STANDARD DETAIL SS-02).
- 306 102.11/108.5 - MANHOLE BARREL SECTION (D>5") (48" I.D.)
- 324 102.9/108.2 - 12" GRAVITY SEWER PIPE (SDR 35 PVC). INCLUDES TYPE A BEDDING AND HAUNCHING MATERIAL AND BACKFILL OF TRENCH WITH NATIVE MATERIALS MEETING 103.16 EARTH BACKFILL MATERIAL.
- 352 102.9/108.3 - 12"x4" SEWER SERVICE TAP. TAPPING SADDLE WITH STAINLESS STEEL STRAPS (SEE STD. DETAIL SS-06).
- 363 BYPASS PUMPING WILL BE REQUIRED FOR CONSTRUCTION.
- 663 304 - AGGREGATE BASE COURSE (CLASS 6) (6" THICK)
- 671 304 - WASHED ROCK SURFACE COURSE FOR GRAVEL DRIVEWAYS. MATCH EXISTING TYPE. THICKNESS IS 2" MIN. AND 3" MAX.
- 883 401.08 - HOT BITUMINOUS PAVEMENT (PATCHING) (6" THICK) (GRADING SX, BINDER GRADE PG 64-22) (THREE 2" LIFTS)
- 733 212 - HYDROSEED WITH NATIVE SEED MIX.
- 808 SPAN/SUPPORT/PROTECT EXISTING STORMWATER/IRRIGATION CULVERT. AMEND BACKFILL WITH BENTONITE POND LINER (MIXED AS PER MFG. SPECIFICATIONS) FOR PLACEMENT AROUND CULVERT (2" ALL SIDES OF PIPE OVER EXPOSED LENGTH) DURING BACKFILL OPERATION.
- 823 PROTECT LIGHT POLE.
- 825 CONTRACTOR IS RESPONSIBLE FOR REPAIR COSTS ASSOCIATED WITH ANY/ALL DAMAGE TO PRIVATE PROPERTY BEHIND ROW LINE OR EASEMENT LIMITS.
- 828 PROTECT UTE WATER WATERLINE.

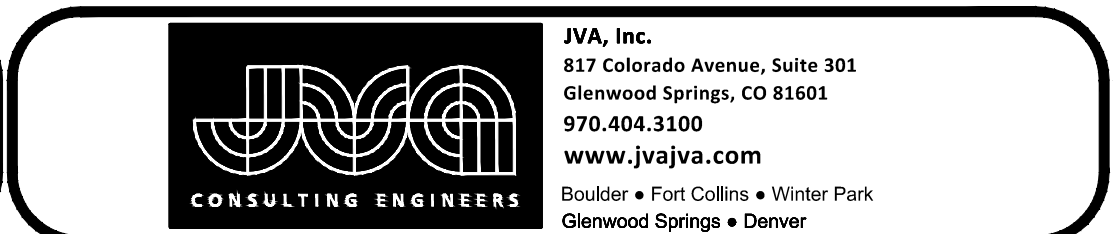


N:\07106\Drawings\HWY 50\107106-01-SAN-PWP-01.dwg, 10/19/2021, 2:47 PM, lal

REVISION	DESCRIPTION	DATE
REV 1		
REV 2		
REV 3		
REV 4		

DRAWN BY	LAL	DATE	OCTOBER 2021
DESIGNED BY	LAL/MMR	DATE	OCTOBER 2021
CHECKED BY	RJA	DATE	OCTOBER 2021
APPROVED BY	XXX	DATE	XXXXX

SCALES:
 PLAN & PROFILE
 HORIZONTAL 1"=20'
 VERTICAL 1"=5'

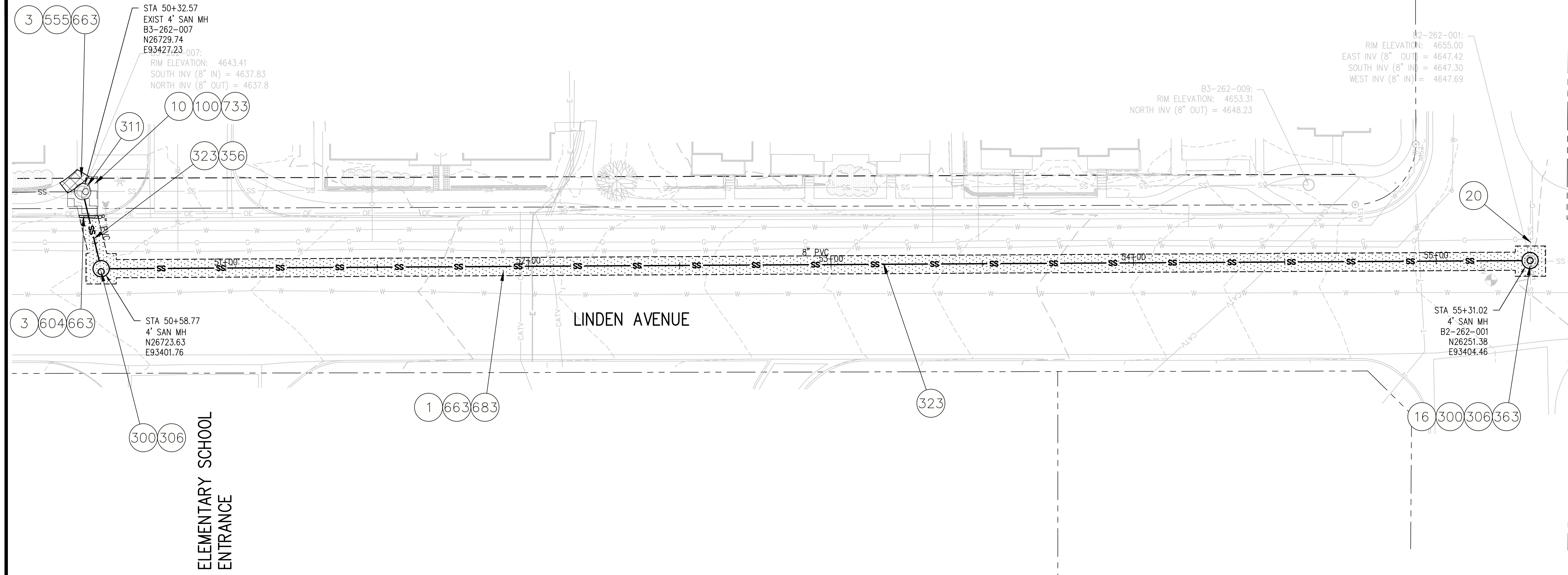


HWY50 SEWER REPLACEMENT PROJECT
 SANITARY PLAN AND PROFILE

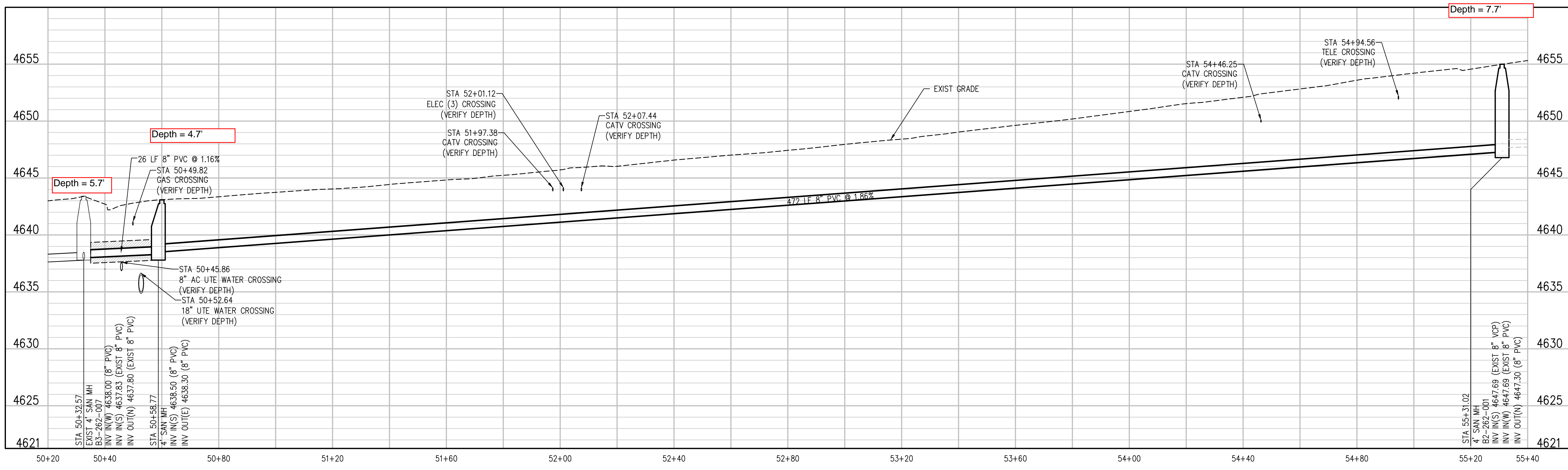
C1.6

CONSTRUCTION NOTES

- 1 202 - REMOVAL OF ASPHALT MAT. CUT AND REMOVE ASPHALT AS SHOWN. (INDICATED BY DOT HATCH PATTERN)
- 3 202 - REMOVAL OF CONCRETE. SAW CUT AND REMOVE CONCRETE AS SHOWN. (INDICATED BY CROSS HATCH PATTERN) INCLUDES BUT NOT LIMITED TO CURB, GUTTER, SIDEWALK, DRIVEWAY, SLABS, V-PAN, CURB RAMPS, INTERSECTION CORNERS, APRONS, AND LANDSCAPE BORDERS.
- 10 202 - REMOVAL OF LANDSCAPE GROUND COVER AND ANY UNDERLYING BARRIER. STOCKPILE PER PROPERTY OWNERS RECOMMENDATION.
- 16 202 - REMOVAL OF MANHOLE. CONTRACTOR SHALL SALVAGE RING AND COVER AND DELIVER TO CITY SHOPS.
- 20 202 - ABANDON PIPE. ABANDON BY PLUGGING REMAINING ENDS WITH CONCRETE.
- 100 210 - RESET LANDSCAPE GROUND COVER. CONTRACTOR SHALL REMOVE GROUND COVER AND ANY UNDERLYING WEED BARRIER AS NEEDED AND STOCKPILE MATERIALS. CONTRACTOR SHALL RESET THESE MATERIALS AND PROVIDE ADDITIONAL MATERIALS AS NEEDED TO RESTORE LANDSCAPING.
- 300 102.11/108.5 - SANITARY SEWER BASIC MANHOLE (48" I.D.). INCLUDES CONNECTION OF ADJACENT SEWER LINE, FORMING INVERTS AND ADJUSTING TO FINAL GRADE. (SEE CITY OF GRAND JUNCTION STANDARD DETAIL SS-02).
- 306 102.11/108.5 - MANHOLE BARREL SECTION (D>5") (48" I.D.)
- 311 102.11/108.5 - CONNECT TO EXISTING MANHOLE (8" PIPE). (SEE CITY OF GRAND JUNCTION STANDARD DETAIL SS-08).
- 323 102.9/108.2 - 8" GRAVITY SEWER PIPE (SDR 35 PVC). INCLUDES TYPE A BEDDING AND HAUNCHING MATERIAL AND BACKFILL OF TRENCH WITH NATIVE MATERIALS MEETING 103.16 EARTH BACKFILL MATERIAL.
- 356 104.40 - ENCASE ENTIRE SEWER IN REINFORCED CONCRETE PER STD. DETAIL GU-04. (ALL CASES WHERE WATER LINE BELOW SEWER LINE OR AT WATERWAY CROSSING)
- 363 BYPASS PUMPING WILL BE REQUIRED FOR CONSTRUCTION.



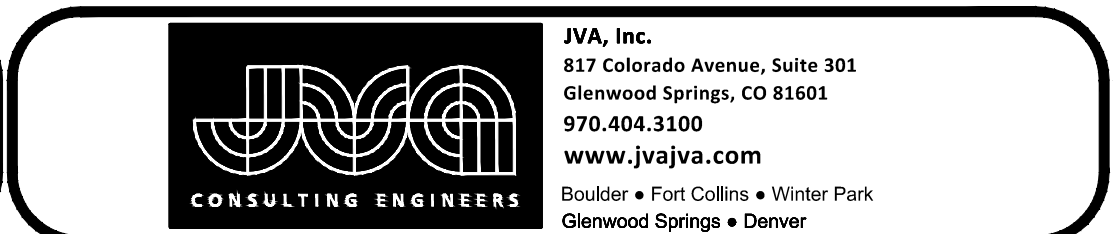
ELEMENTARY SCHOOL ENTRANCE



- 555 608.06 - CONCRETE SIDEWALK (4" THICK) (MATCH EXISTING WIDTH)
- 604 608.06 - CONCRETE CURB AND GUTTER (MATCH EXISTING WIDTH)
- 663 304 - AGGREGATE BASE COURSE (CLASS 6) (6" THICK)
- 683 401.08 - HOT BITUMINOUS PAVEMENT (PATCHING) (6" THICK) (GRADING SX, BINDER GRADE PG 64-22) (THREE 2" LIFTS)
- 733 212 - HYDROSEED WITH NATIVE SEED MIX.

N:\07156\Drawings\HWY 50\07156-01-SAN-PLAN-01.dwg, 10/19/2021, 2:47 PM, lal

REVISION	DESCRIPTION	DATE	DRAWN BY	DATE	SCALE:
REV 1			LAL	OCTOBER 2021	PLAN & PROFILE HORIZONTAL 1"=20' VERTICAL 1"=5'
REV 2			LAL/MMR	OCTOBER 2021	
REV 3			RJA	OCTOBER 2021	
REV 4			XXX	XXXX	



HWY50 SEWER REPLACEMENT PROJECT
SANITARY PLAN AND PROFILE
LINDEN STREET

C1.7