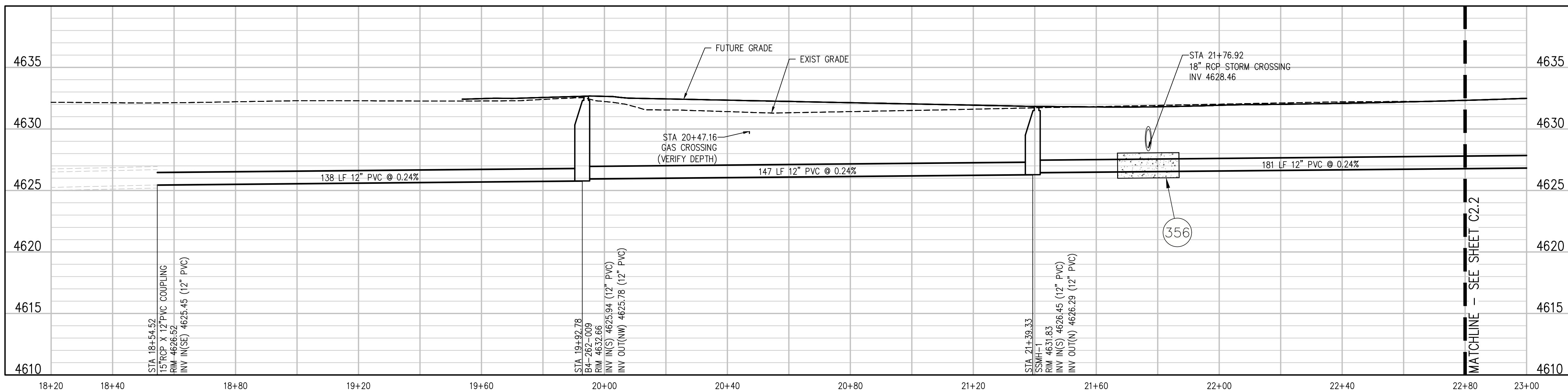


- ### CONSTRUCTION NOTES
- 10 202 - REMOVAL OF LANDSCAPE GROUND COVER AND ANY UNDERLYING BARRIER. STOCKPILE PER PROPERTY OWNERS RECOMMENDATION.
 - 15 202 - REMOVAL OF PIPE AS SHOWN. (SIZE AND TYPE AS SHOWN ON PLAN)
 - 16 202 - REMOVAL OF MANHOLE. CONTRACTOR SHALL SALVAGE RING AND COVER AND DELIVER TO CITY SHOPS.
 - 100 210 - RESET LANDSCAPE GROUND COVER. CONTRACTOR SHALL REMOVE GROUND COVER AND ANY UNDERLYING WEED BARRIER AS NEEDED AND STOCKPILE MATERIALS. CONTRACTOR SHALL RESET THESE MATERIALS AND PROVIDE ADDITIONAL MATERIALS AS NEEDED TO RESTORE LANDSCAPING.
 - 300 102.11/108.5 - SANITARY SEWER BASIC MANHOLE (48" I.D.). INCLUDES CONNECTION OF ADJACENT SEWER LINE, FORMING INVERTS AND ADJUSTING TO FINAL GRADE. (SEE CITY OF GRAND JUNCTION STANDARD DETAIL SS-02).
 - 306 102.11/108.5 - MANHOLE BARREL SECTION (D>5') (48" I.D.)
 - 324 102.9/108.2 - 12" GRAVITY SEWER PIPE (SDR 35 PVC). INCLUDES TYPE A BEDDING AND HAUNCHING MATERIAL AND BACKFILL OF TRENCH WITH NATIVE MATERIALS MEETING 103.16 EARTH BACKFILL MATERIAL.
 - 356 104.40 - ENCASE ENTIRE SEWER IN REINFORCED CONCRETE PER STD. DETAIL GU-04. (ALL CASES WHERE WATER LINE BELOW SEWER LINE OR AT WATERWAY CROSSING)
 - 363 BYPASS PUMPING WILL BE REQUIRED FOR CONSTRUCTION.
 - 364 CONNECT TO EXISTING SEWER PIPE. THE CONTRACTOR PRICE FOR SEWER PIPE SHALL INCLUDE THE COST OF CONNECTION TO EXISTING PIPELINE.
 - 671 304 - WASHED ROCK SURFACE COURSE FOR GRAVEL DRIVEWAYS. MATCH EXISTING TYPE. THICKNESS IS 2" MIN. AND 3" MAX.
 - 733 212 - HYDROSEED WITH NATIVE SEED MIX.
 - 825 CONTRACTOR IS RESPONSIBLE FOR REPAIR COSTS ASSOCIATED WITH ANY/ALL DAMAGE TO PRIVATE PROPERTY BEHIND ROW LINE OR EASEMENT LIMITS.

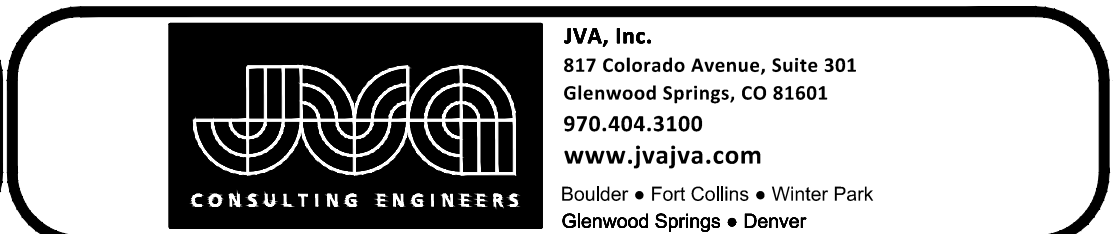
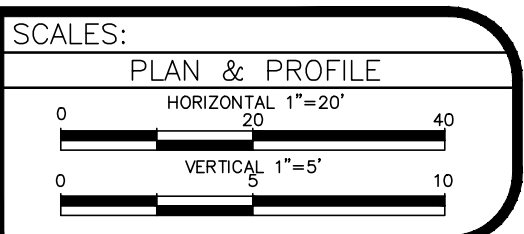


NOTE:
ROAD, STORM, WATER AND ALL OTHER UTILITIES ARE DESIGNED BY OTHERS. REFER TO TRACY'S VILLAGE PLAN SET PREPARED FOR COLCAL LLC BY AUSTIN CIVIL GROUP, LLC FOR DESIGN OF TRACY'S VILLAGE INFRASTRUCTURE.

A:\107196\Drawings\HWY 50\107196-01-SAN-PALM-Trace\Plan.dwg, 11/08/2021 - 2:31 PM, lal

REVISION	DESCRIPTION	DATE
REV 1		
REV 2		
REV 3		
REV 4		

DRAWN BY	LAL	DATE	NOV 4, 2021
DESIGNED BY	LAL/MMR	DATE	NOV 4, 2021
CHECKED BY	JJM	DATE	NOV 4, 2021
APPROVED BY		DATE	

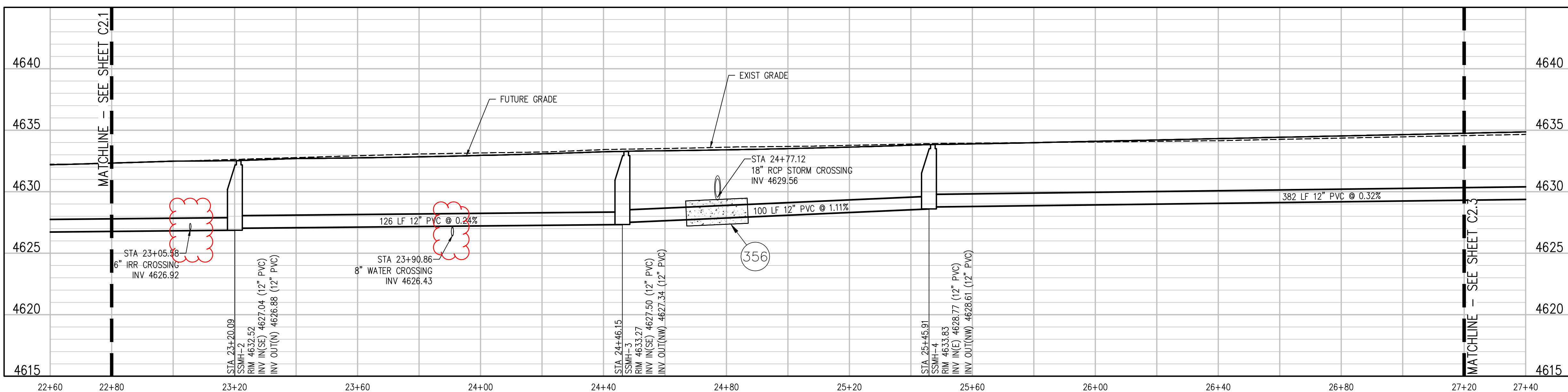
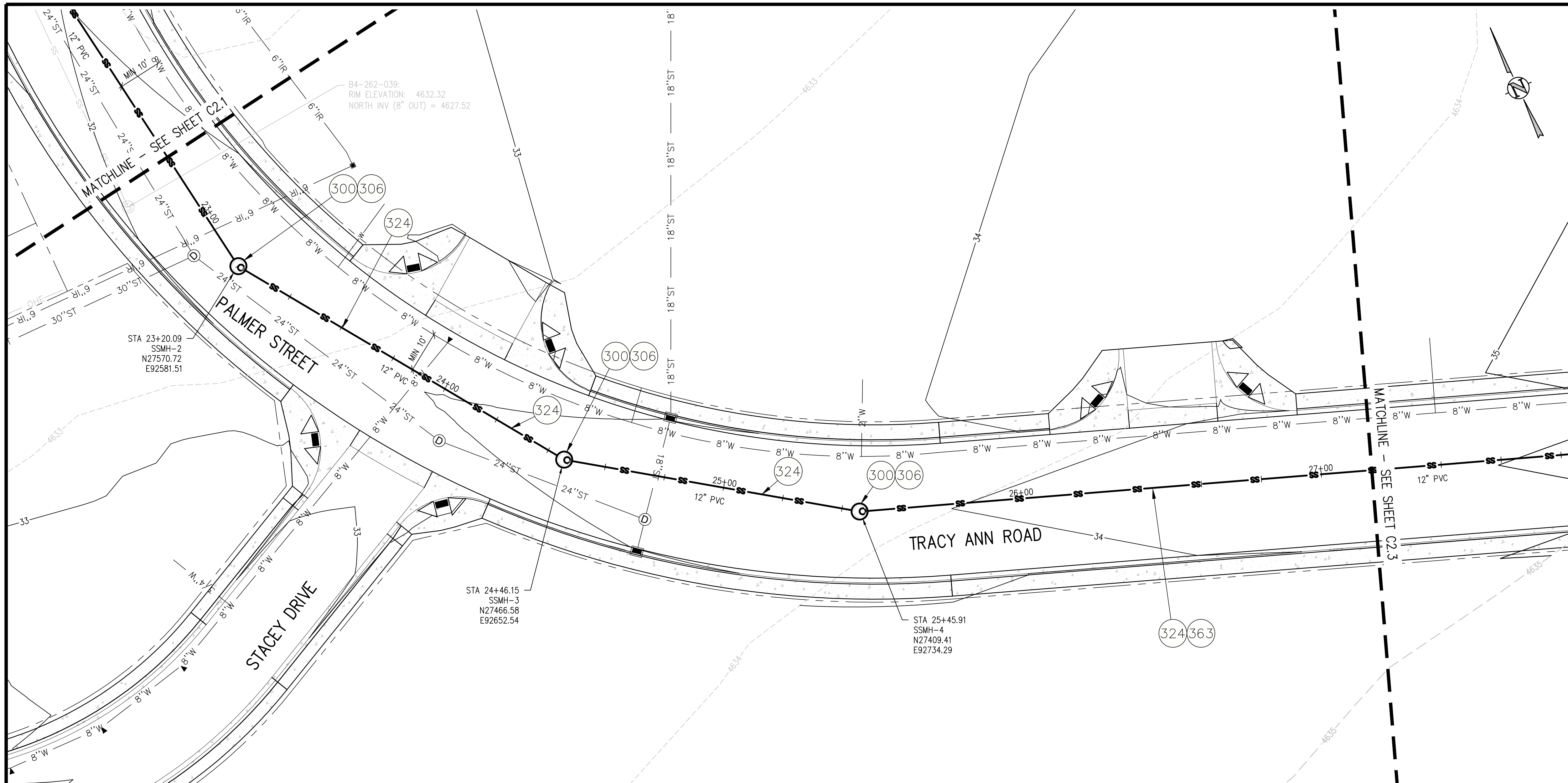


**HWY50 SEWER REPLACEMENT PROJECT
PALMER STREET AND TRACY ANN ROAD
SANITARY PLAN AND PROFILE**

C2.1

CONSTRUCTION NOTES

- 300 102.11/108.5 - SANITARY SEWER BASIC MANHOLE (48" I.D.). INCLUDES CONNECTION OF ADJACENT SEWER LINE, FORMING INVERTS AND ADJUSTING TO FINAL GRADE. (SEE CITY OF GRAND JUNCTION STANDARD DETAIL SS-02).
- 306 102.11/108.5 - MANHOLE BARREL SECTION (D>5') (48" I.D.)
- 356 104.40 - ENCASE ENTIRE SEWER IN REINFORCED CONCRETE PER STD. DETAIL GU-04. (ALL CASES WHERE WATER LINE BELOW SEWER LINE OR AT WATERWAY CROSSING)
- 324 102.9/108.2 - 12" GRAVITY SEWER PIPE (SDR 35 PVC). INCLUDES TYPE A BEDDING AND HAUNCHING MATERIAL AND BACKFILL OF TRENCH WITH NATIVE MATERIALS MEETING 103.16 EARTH BACKFILL MATERIAL.
- 363 BYPASS PUMPING WILL BE REQUIRED FOR CONSTRUCTION.

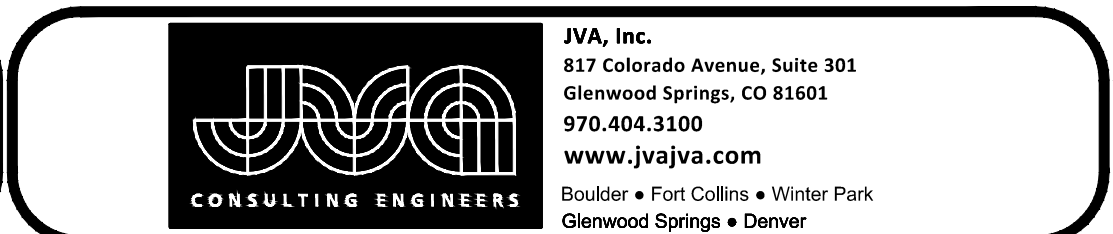
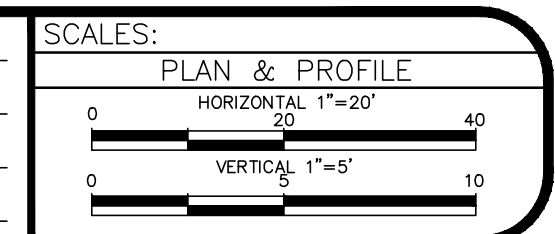


NOTE:
ROAD, STORM, WATER AND ALL OTHER UTILITIES ARE DESIGNED BY OTHERS. REFER TO TRACY'S VILLAGE PLAN SET PREPARED FOR COLCAL LLC BY AUSTIN CIVIL GROUP, LLC FOR DESIGN OF TRACY'S VILLAGE INFRASTRUCTURE.

X:\107196\Drawings\HWY 50\107196-01-SAN-PMP-Palmer_Tracy\mxd, 11/04/2021 - 10:55 AM, lat

REVISION	DATE	DESCRIPTION
REV 1		
REV 2		
REV 3		
REV 4		

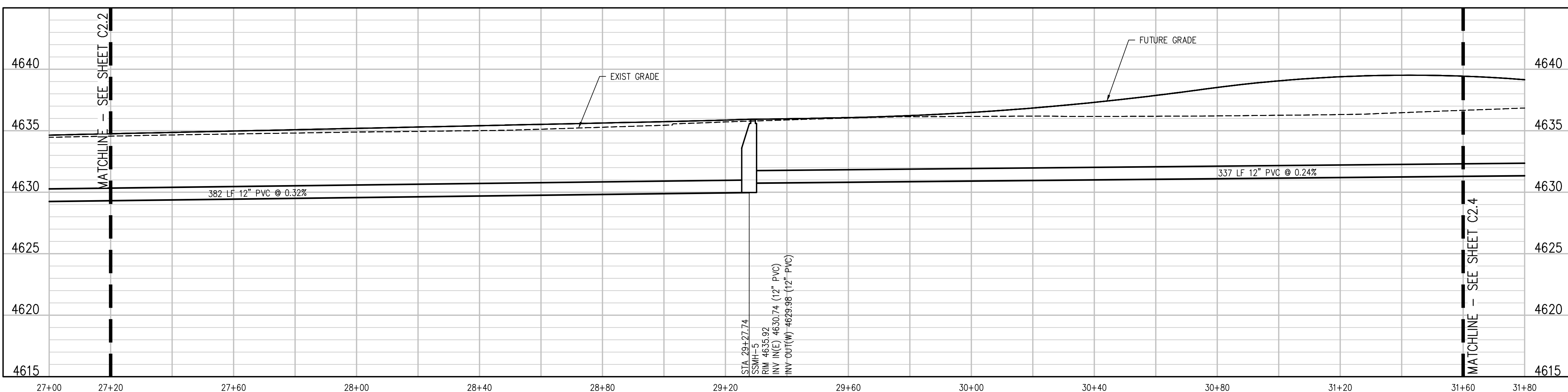
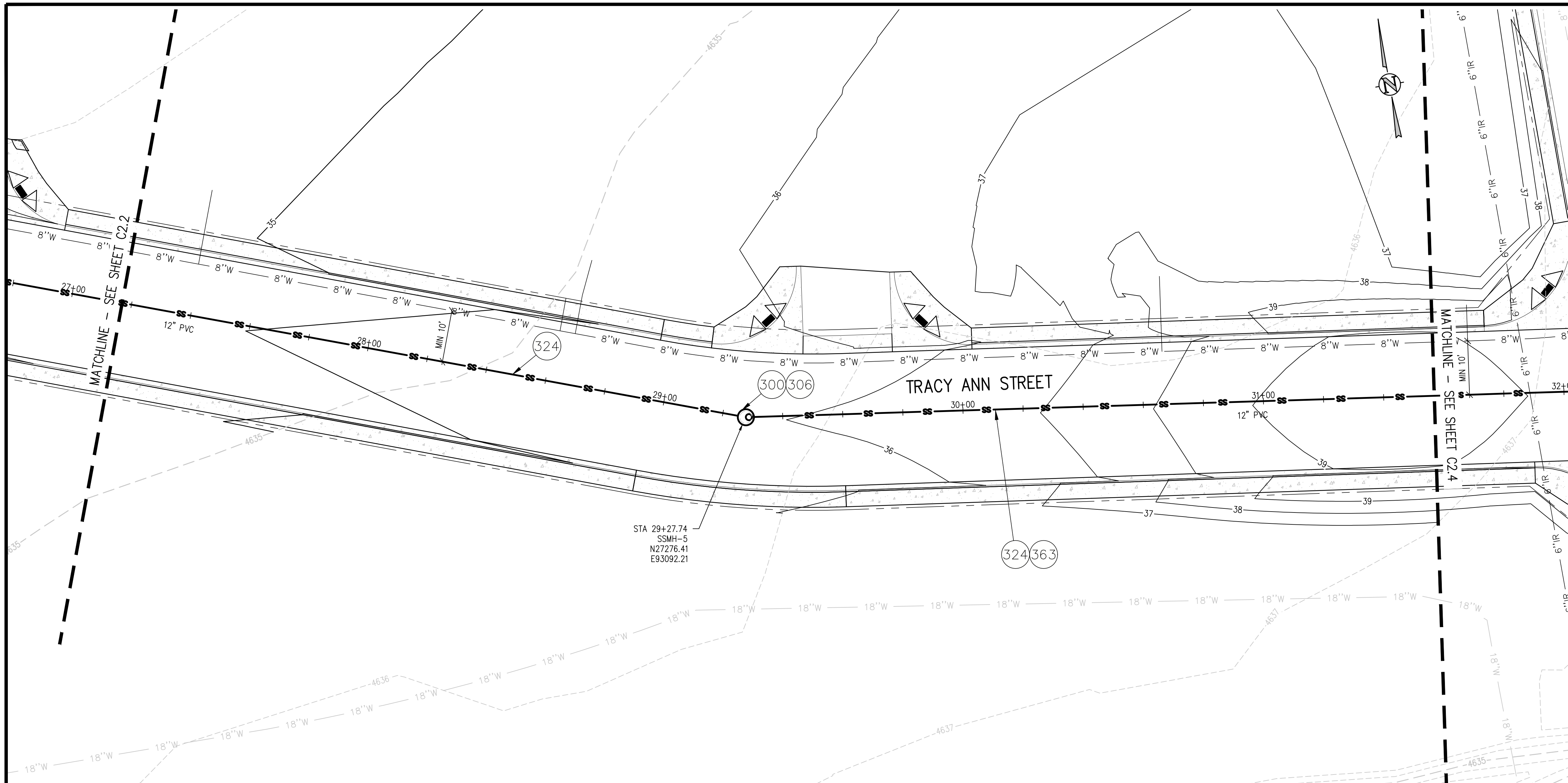
DRAWN BY	LAL	DATE	NOV 4, 2021
DESIGNED BY	LAL/MMR	DATE	NOV 4, 2021
CHECKED BY	JJM	DATE	NOV 4, 2021
APPROVED BY		DATE	



**HWY50 SEWER REPLACEMENT PROJECT
PALMER STREET AND TRACY ANN ROAD
SANTIARY PLAN AND PROFILE** C2.2

CONSTRUCTION NOTES

- 300 102.11/108.5 - SANITARY SEWER BASIC MANHOLE (48" I.D.). INCLUDES CONNECTION OF ADJACENT SEWER LINE, FORMING INVERTS AND ADJUSTING TO FINAL GRADE. (SEE CITY OF GRAND JUNCTION STANDARD DETAIL SS-02).
- 306 102.11/108.5 - MANHOLE BARREL SECTION (D>5') (48" I.D.)
- 324 102.9/108.2 - 12" GRAVITY SEWER PIPE (SDR 35 PVC). INCLUDES TYPE A BEDDING AND HAUNCHING MATERIAL AND BACKFILL OF TRENCH WITH NATIVE MATERIALS MEETING 103.16 EARTH BACKFILL MATERIAL.
- 363 BYPASS PUMPING WILL BE REQUIRED FOR CONSTRUCTION.

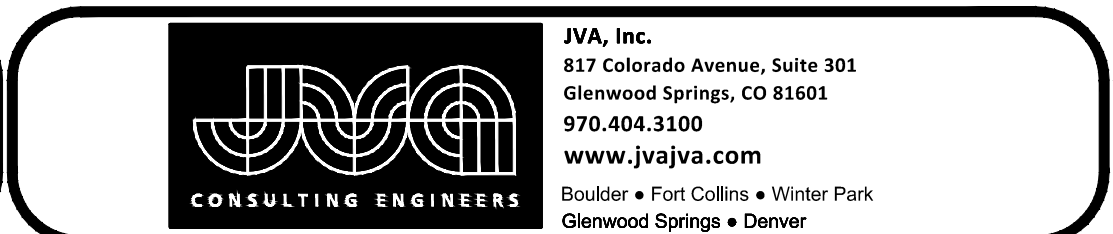


NOTE:
ROAD, STORM, WATER AND ALL OTHER UTILITIES ARE DESIGNED BY OTHERS. REFER TO TRACY'S VILLAGE PLAN SET PREPARED FOR COLCAL LLC BY AUSTIN CIVIL GROUP, LLC FOR DESIGN OF TRACY'S VILLAGE INFRASTRUCTURE.

A:\107196\Drawings\HWY 50\107196-01-SAN-PWP-Palmer_Tracy\mxdwg, 11/04/2021 - 10:56 AM, lal

REVISION	DESCRIPTION	DATE	DRAWN BY	DATE
REV 1			LAL	NOV 4, 2021
REV 2			LAL/MMR	NOV 4, 2021
REV 3			JJM	NOV 4, 2021
REV 4				

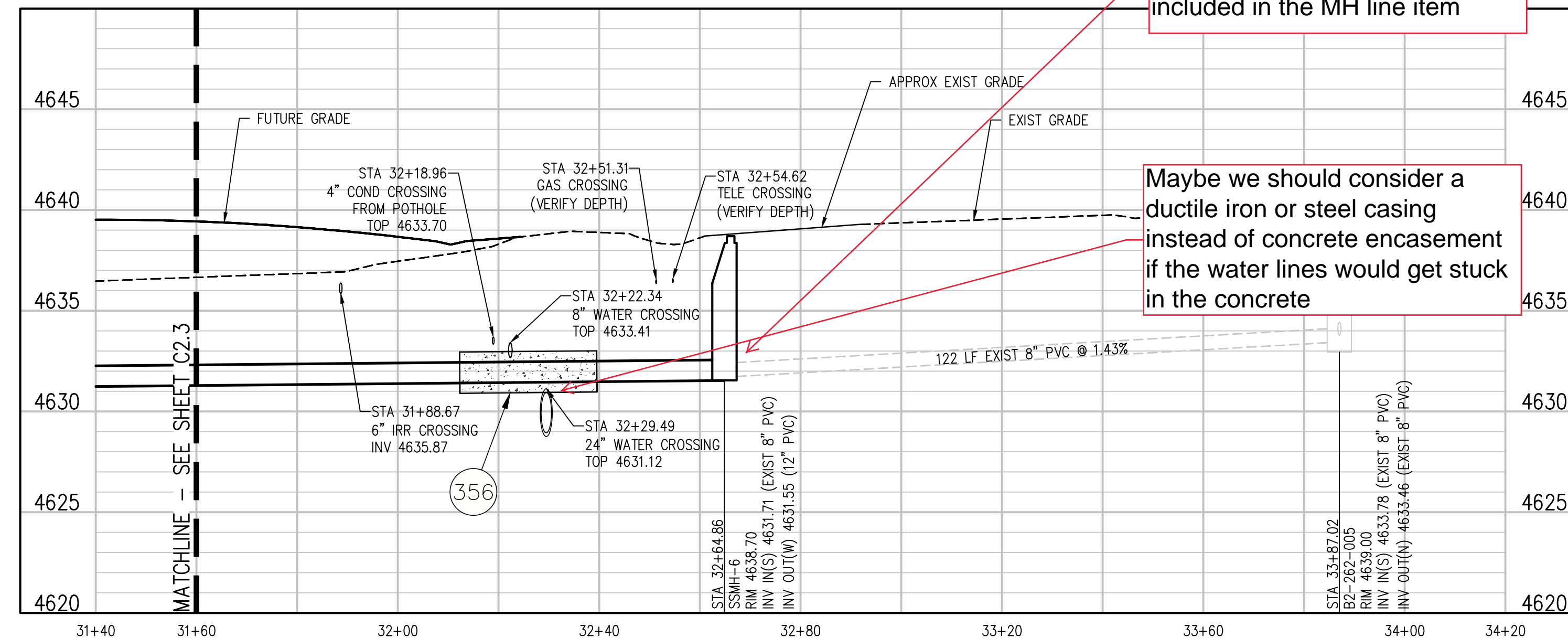
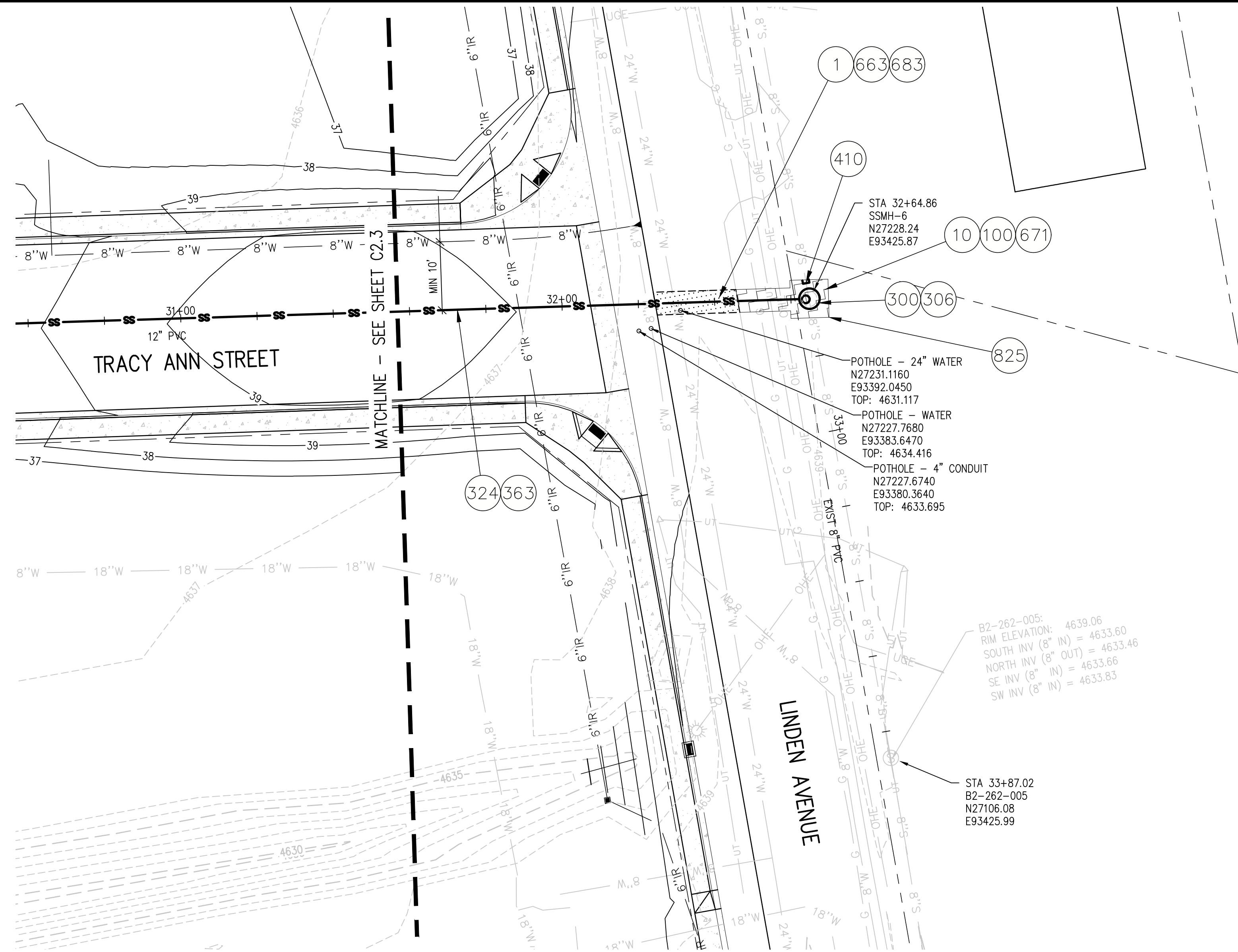
SCALES:
 PLAN & PROFILE
 HORIZONTAL 1"=20'
 VERTICAL 1"=5'



**HWY50 SEWER REPLACEMENT PROJECT
 PALMER STREET AND TRACY ANN ROAD
 SANTIARY PLAN AND PROFILE C2.3**

CONSTRUCTION NOTES

- 1 202 - REMOVAL OF ASPHALT MAT. CUT AND REMOVE ASPHALT AS SHOWN. (INDICATED BY DOT HATCH PATTERN)
- 10 202 - REMOVAL OF LANDSCAPE GROUND COVER AND ANY UNDERLYING BARRIER. STOCKPILE PER PROPERTY OWNERS RECOMMENDATION.
- 100 210 - RESET LANDSCAPE GROUND COVER. CONTRACTOR SHALL REMOVE GROUND COVER AND ANY UNDERLYING WEED BARRIER AS NEEDED AND STOCKPILE MATERIALS. CONTRACTOR SHALL RESET THESE MATERIALS AND PROVIDE ADDITIONAL MATERIALS AS NEEDED TO RESTORE LANDSCAPING.
- 300 102.11/108.5 - SANITARY SEWER BASIC MANHOLE (48" I.D.). INCLUDES CONNECTION OF ADJACENT SEWER LINE. FORMING INVERTS AND ADJUSTING TO FINAL GRADE. (SEE CITY OF GRAND JUNCTION STANDARD DETAIL SS-02).
- 306 102.11/108.5 - MANHOLE BARREL SECTION (D>5') (48" I.D.)
- 324 102.9/108.2 - 12" GRAVITY SEWER PIPE (SDR 35 PVC). INCLUDES TYPE A BEDDING AND HAUNCHING MATERIAL AND BACKFILL OF TRENCH WITH NATIVE MATERIALS MEETING 103.16 EARTH BACKFILL MATERIAL.
- 356 104.40 - ENCASE ENTIRE SEWER IN REINFORCED CONCRETE PER STD. DETAIL GU-04. (ALL CASES WHERE WATER LINE BELOW SEWER LINE OR AT WATERWAY CROSSING)
- 363 BYPASS PUMPING WILL BE REQUIRED FOR CONSTRUCTION.
- 410 102.8/108.3 - END CAP / PLUG (8").
- 663 304 - AGGREGATE BASE COURSE (CLASS 6) (6" THICK)
- 671 304 - WASHED ROCK SURFACE COURSE FOR GRAVEL DRIVEWAYS. MATCH EXISTING TYPE. THICKNESS IS 2" MIN. AND 3" MAX.
- 683 401.08 - HOT BITUMINOUS PAVEMENT (PATCHING) (6" THICK) (GRADING SX, BINDER GRADE PG 64-22) (THREE 2" LIFTS)
- 825 CONTRACTOR IS RESPONSIBLE FOR REPAIR COSTS ASSOCIATED WITH ANY/ALL DAMAGE TO PRIVATE PROPERTY BEHIND ROW LINE OR EASEMENT LIMITS.



Add in line item for connection to existing sewer, if not already included in the MH line item

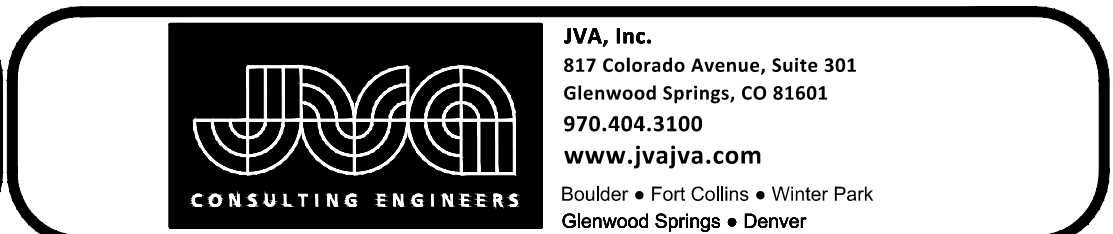
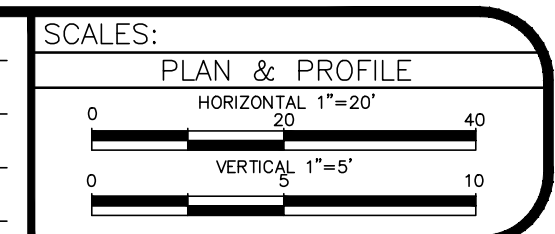
Maybe we should consider a ductile iron or steel casing instead of concrete encasement if the water lines would get stuck in the concrete

NOTE:
ROAD, STORM, WATER AND ALL OTHER UTILITIES ARE DESIGNED BY OTHERS. REFER TO TRACY'S VILLAGE PLAN SET PREPARED FOR COLCAL LLC BY AUSTIN CIVIL GROUP, LLC FOR DESIGN OF TRACY'S VILLAGE INFRASTRUCTURE.

N:\07196\Drawings\HWY 50\07196-01-SAN-PALM-Tracy\mxdwg, 11/04/2021 - 10:56 AM, lal

REVISION	DESCRIPTION	DATE
REV 1		
REV 2		
REV 3		
REV 4		

DRAWN BY LAL DATE NOV 4, 2021
 DESIGNED BY LAL/MMR DATE NOV 4, 2021
 CHECKED BY JUM DATE NOV 4, 2021
 APPROVED BY _____ DATE _____



HWY50 SEWER REPLACEMENT PROJECT
PALMER STREET AND TRACY ANN ROAD
SANITARY PLAN AND PROFILE C2.4