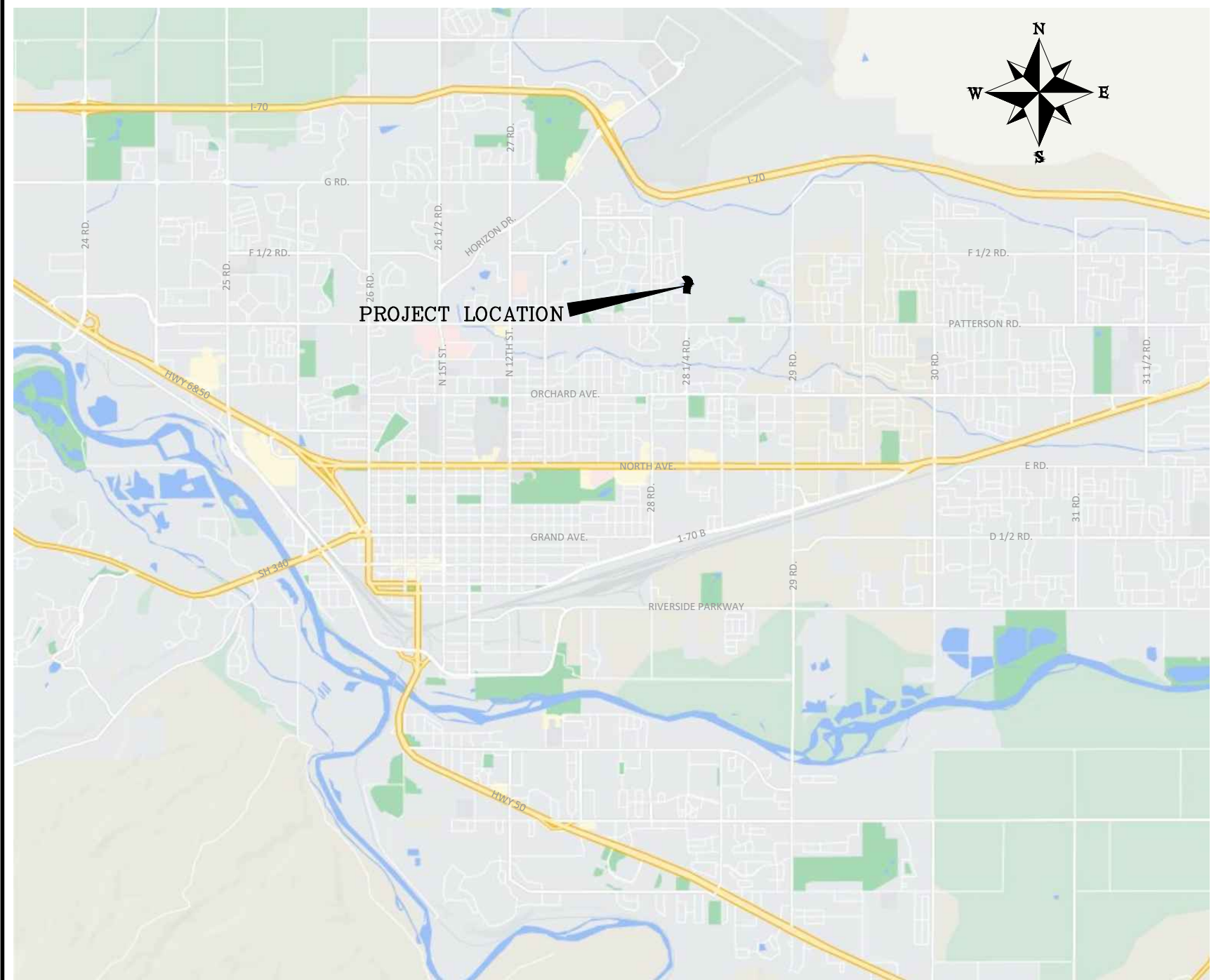
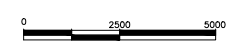


CITY OF GRAND JUNCTION 28 1/4 RD & HAWTHORNE AVE

November 12, 2021



VICINITY MAP



Sheet Index

- 1 Cover Sheet
- 2 Standard Abbreviations, Legend, & Symbols
- 3 Summary of Approximate Quantities
- 4 Typical Sections & Details
- 5 Typical Cross Sections
- 6 Removal Plan
- 7 Subsurface Utility Engineering General Notes
- 8 Subsurface Utility Engineering Plan
- 9 Utility Plan
- 10 Storm Drain Plan and Profiles
- 11 Improvement Plan
- 12 Road Profile
- 13-15 Road Cross Sections
- 16-18 Staking Plan
- 19 Striping and Signage Plan
- 20 Electrical Plan
- 21 Landscape Plan
- 22-25 Storm Water Management Plan

NOTE: NOTIFY AFFECTED UTILITY VENDOR 48 HOURS PRIOR TO EXCAVATIONS THAT WILL EXPOSE UTILITY LINES. THE COVER SHEET WILL HAVE A LISTING OF UTILITY VENDORS AND TELEPHONE NUMBERS.

REVISION	DESCRIPTION	DATE
REVISION Δ REV 1		DATE
REVISION Δ REV 2		DATE
REVISION Δ REV 3		DATE
REVISION Δ REV 4		DATE



Know what's below.
Call before you dig.



*Public Works
Engineering Division*

ABBREVIATIONS

AASHTO	AMERICAN ASSOCIATION OF STATE HIGHWAY & TRANSPORTATION OFFICIALS
ABC	AGGREGATE BASE COURSE
AC	ASBESTOS CEMENT
AP	ANGLE POINT
ASB	ANCHORED STRAW BALES
ASP	ALUMINIZED STEEL PIPE
ASTM	AMERICAN SOCIETY FOR TESTING MATERIALS
AWWA	AMERICAN WATER WORKS ASSOCIATION
BC	BACK OF CURB
BF	BUTTERFLY VALVE
BOW	BACK OF WALK
BCR	BEGIN CURB RETURN
BOT	BOTTOM
BSWMP	BETTER STORM WATER MANAGEMENT PRACTICES
CH	CHORD
CAP	CORRUGATED ALUMINUM PIPE
CDOT	COLORADO DEPARTMENT OF TRANSPORTATION
CI	CAST IRON
C, G, & SW	CURB, GUTTER & SIDEWALK
C	CENTER LINE
CL	CLEAR
CMP	CORRUGATED METAL PIPE
CO	CLEAN OUT
COMB	COMBINATION (AS IN STORM SEWER AND SANITARY SEWER)
CONC	CONCRETE
CSM	CITY SURVEY MONUMENT
CSP	CORRUGATED STEEL PIPE
CU	COPPER
DI	DUCTILE IRON
DWY	DRIVEWAY
E	ELECTRIC
ECR	END CURB RETURN
EG	EDGE OF GUTTER
EL	ELEVATION
EP	EDGE OF PAVEMENT
EX	EXISTING
FB	FULL BODY
FC	FACE OF CURB
FG	FINISHED GRADE
F	FLOW LINE
FL	FLANGE
FM	FORCE MAIN
FO	FIBER OPTICS
FS	FAR SIDE
FTG	FOOTING
G	GAS
GB	GRADE BREAK
GM	GAS METER
GV	GATE VALVE
HBP	HOT BITUMINOUS PAVEMENT
HDPE	HIGH DENSITY POLYETHYLENE
INV	INVERT
IRR	IRRIGATION
L	LENGTH OF ARC
LC	LONG CHORD
LF	LINEAR FEET
LL	LONG ARC
LS	SHORT ARC
LT	LEFT
MB	MAILBOX
MCSM	MESA COUNTY SURVEY MONUMENT
MH	MANHOLE
MJ	MECHANICAL JOINT
MW	MILL WRAP
N/A	NOT APPLICABLE
NIC	NOT IN CONTRACT
NOP	NO ONE PERSON
NRCP	NON-REINFORCED CONCRETE PIPE
NS	NEAR SIDE
NTS	NOT TO SCALE
OHP	OVERHEAD POWER
OHT	OVERHEAD TELEPHONE
PC	POINT OF CURVATURE
PCC	POINT OF COMPOUND CURVATURE
PE	POLYETHYLENE
PERF	PERFORATED
PI	POINT OF INTERSECTION
PIP	PLASTIC IRRIGATION PIPE
POC	POINT ON CURVE
POT	POINT ON TANGENT
PR	PROPOSED
PRC	POINT OF REVERSE CURVATURE
PT	POINT OF TANGENCY
PVC	POLYVINYL CHLORIDE
R	RADIUS
RCP	REINFORCED CONCRETE PIPE
REQ'D	REQUIRED
RG	RESTRAINED GLANDS
RL	LONG RADIUS
ROW	RIGHT OF WAY
RP	RADIUS POINT
RR	RAIL ROAD
RS	SHORT RADIUS
RT	RIGHT
S	SLOPE
SAN	SANITARY
SC	SHORT CHORD
SCD	STANDARD CONTRACT DOCUMENTS
SCH	SCHEDULE
SF	SILT FENCE
SL	SECTION LINE
SSRB	STANDARD SPECIFICATIONS FOR ROAD & BRIDGE CONSTRUCTION
SSUJ	STANDARD SPECIFICATIONS FOR CONSTRUCTION OF UNDERGROUND UTILITIES
STA	STATION
STL	STEEL
STM	STORM
T	TELEPHONE
TAN	LENGTH OF TANGENT
TC	TOP OF CURB
TH	TEST HOLE
TV	TELEVISION
(TYP)	TYPICAL
UU	UNDERGROUND UTILITIES
VC	VERTICAL CURVE
VCP	VITRIFIED CLAY PIPE
VPC	VERTICAL POINT OF CURVATURE
VPCC	VERTICAL POINT OF COMPOUND CURVATURE
VPRC	VERTICAL POINT OF REVERSE CURVATURE
VPI	VERTICAL POINT OF INTERSECTION
VPT	VERTICAL POINT OF TANGENCY
W	WATER
Δ	DELTA ANGLE

LEGEND

BSWMP DRAINAGE BASIN BOUNDARY		PROPOSED CONCRETE CURB AND GUTTER	
BSWMP ANCHORED STRAW BALES		PROPOSED CONCRETE CURB, GUTTER, & SIDEWALK	
BSWMP SILT FENCE		PROPOSED CONCRETE SIDEWALK	
BUILDING		PROPOSED "WET" UTILITIES (CONSTRUCTION NOTE WILL INDICATE TYPE, SIZE, AND MATERIAL OF NEW MAIN)	
CONCRETE CURB AND GUTTER		ALL PROPOSED FEATURES NOT SHOWN IN LEGEND WILL BE SHOWN THE SAME AS THEIR EXISTING COUNTERPART, BUT INDICATED BY BOLDER LINETYPE	
CONCRETE CURB, GUTTER, & SIDEWALK		RAIL ROAD	
CONCRETE DITCH		RETAINING WALL	
CONCRETE SIDEWALK		STRIPING (CONTINUOUS WHITE)	
CULVERT		STRIPING (DASHED WHITE)	
EARTH DITCH		STRIPING (CONTINUOUS YELLOW)	
EDGE OF GRAVEL		STRIPING (DASHED YELLOW)	
EDGE OF PAVEMENT		TOP OF SLOPE	
FENCE (HT & MATL NOTED)		CONTOUR LINES (SHOWN BETWEEN TOP & TOE)	
GUARD RAIL		TOE OF SLOPE	
HATCHING: INDICATES ASPHALT REMOVAL		TRAFFIC DETECTOR LOOP	
HATCHING: INDICATES CONCRETE REMOVAL		UTILITY LINE (ABANDON) (THIS CASE A WATER LINE)	
HATCHING: INDICATES STAGING AREA		UTILITY LINE (CABLE TV)	
LINE (CENTER OF IMPROVEMENTS)		UTILITY LINE (ELECTRIC)	
LINE (CITY LIMITS)		UTILITY LINE (FIBER OPTIC)	
LINE (CONTROL)		UTILITY LINE (GAS)	
LINE (EASEMENT)		UTILITY LINE (HIGH VOLTAGE OVERHEAD POWER)	
LINE (MONUMENT/SECTION)		UTILITY LINE (OVERHEAD POWER)	
LINE (PROPERTY)		UTILITY LINE (OVERHEAD TELEPHONE)	
LINE (RIGHT OF WAY)		UTILITY LINE (SANITARY SEWER)	
MATCH LINE		UTILITY LINE (SANITARY SEWER FORCE MAIN)	
PIPE (IRRIGATION)		UTILITY LINE (SANITARY SEWER SERVICE)	
PIPE (SIPHON)		UTILITY LINE (STORM SEWER)	
		UTILITY LINE (STORM SEWER, PERFORATED)	
		UTILITY LINE (STORM/SANITARY SEWER SEWER COMBINATION)	
		UTILITY LINE (TELEPHONE)	
		UTILITY LINE (WATER)	

SYMBOLS

BENCH MARK	
CATCH BASIN	
CLEAN OUT	
CURB STOP	
FIRE HYDRANT	
GUY WIRE ANCHOR	
HEADGATE	
IRRIGATION PUMP	
MAILBOX	
MANHOLE (ELECTRIC)	
MANHOLE (GAS)	
MANHOLE (SANITARY/STORM)	
MANHOLE (TELEPHONE)	
MANHOLE (TV)	
MANHOLE (WATER)	
METER (GAS)	
METER (WATER)	
PEDESTAL (TELEPHONE)	
PEDESTAL (TV)	
PROPERTY PIN	
PULL BOX	
REDUCER FITTING	
SIGN OR POST (SIGN TYPE NOTED)	
SPRINKLER HEAD	
STREET LIGHT	
SURVEY MONUMENT (CITY)	
SURVEY MONUMENT (TYPE NOTED)	
TEST HOLE	
TRAFFIC PAINT MARKING	
TRAFFIC SIGNAL POLE AND MAST ARM	
UTILITY POLE	
VALVE (GAS)	
VALVE (IRRIGATION)	
VALVE (WATER)	
VEGETATION (HEDGE OR BUSH)	
VEGETATION (TREE STUMP)	
VEGETATION (TREE) (CALIPER SIZE NOTED)	
WATER HYDRANT	
WEIR	
YARD LIGHT	

BAR SCALE:

GRAPHIC SCALE

(IN FEET)
1 inch = 20 ft.

NORTH ARROW:

REVISION	DESCRIPTION	DATE	DRAWN BY	DATE
REVISION Δ REV 1			DJM	2021
REVISION Δ REV 2			DJM	2021
REVISION Δ REV 3			KAH	2021
REVISION Δ REV 4			KAH	2021

SEE PLAN FOR SCALE INFO



PUBLIC WORKS ENGINEERING DIVISION
PROJECT NO. F210201L

28 1/4 RD & HAWTHORNE AVE
STANDARD ABBREVIATIONS LEGEND AND SYMBOLS
November 12, 2021

N:\LandProj\2020 28.25 and Hawthorne Ave Intersection Improvement\60CAD\00DESIGN\STANDARD ABBREVIATIONS LEGENDS AND SYMBOLS.dwg - PLOTTED 11/12/2021 12:50:25 PM

Bid Schedule: 28 1/4 Rd and Hawthorne Ave.

Item No.	CDOT, City Ref.	Description	Quantity	Units	Unit Price	Total Price
1		CLEAR AND GRUB	1.	LS	\$ _____	\$ _____
2		REMOVAL TREE	1.	EA	\$ _____	\$ _____
3		REMOVAL OF PIPE	69.	LF	\$ _____	\$ _____
4		REMOVAL OF BOLLARD	4.	EA	\$ _____	\$ _____
5		REMOVAL ASPHALT MAT (FULL DEPTH)	11.56	SY	\$ _____	\$ _____
6		REMOVAL ASPHALT MAT (PLANING) 2" MILL	29.22	SY	\$ _____	\$ _____
7		REMOVAL OF PAVEMENT MARKING	136.	SF	\$ _____	\$ _____
8		REMOVAL GROUND SIGN (RETURN TO TRAFFIC DEPT AT THE CITY SHOPS)	10.	EA	\$ _____	\$ _____
9		SAWING ASPHALT MAT (6 IN)	66.	LF	\$ _____	\$ _____
10		REMOVAL OF FENCE	116.	LF	\$ _____	\$ _____
11		UNCLASSIFIED EXCAVATION	2,417.	CY	\$ _____	\$ _____
12		EROSION CONTROL LOG TYPE 1 (9 IN)	1,150.	LF	\$ _____	\$ _____
13		AGGREGATE BAG	30.	LF	\$ _____	\$ _____
14		CONCRETE WASHOUT	1.	EA	\$ _____	\$ _____
15		STORM DRAIN INLET PROTECTION (TYPE II)	6.	EA	\$ _____	\$ _____
16		VEHICLE TRACKING PAD	2.	EA	\$ _____	\$ _____
17		RELOCATE WATER VALVE	2.	EA	\$ _____	\$ _____
18		Adjust Manhole	1.	EA	\$ _____	\$ _____
19		SEEDING (NATIVE)	11,300.	SF	\$ _____	\$ _____
20		ROCK MULCH (WEED FREE)	4,020.	SF	\$ _____	\$ _____
21		LANDSCAPE WEED BARRIER FABRIC	446.67	SY	\$ _____	\$ _____
22		ADJUST VALVE BOX	2.	EA	\$ _____	\$ _____
23		ABC (CL 6)	1,844.	TON	\$ _____	\$ _____
24		RECONDITIONING (12" DEPTH)	3,459.22	SY	\$ _____	\$ _____
25		Hot Mix Asphalt (Grading SX) (75) (PG 64-22)	845.	TON	\$ _____	\$ _____
26		Concrete Sidewalk (4 Inch)	462.	SY	\$ _____	\$ _____
27		RIPRAP (9 INCH)	40.89	CY	\$ _____	\$ _____
28		18 Inch Reinforced Concrete Pipe (Complete In Place)	93.	LF	\$ _____	\$ _____
29		18 Inch Reinforced Concrete End Section	1.	EA	\$ _____	\$ _____
30		Manhole Slab Base (5 Foot)	1.	EA	\$ _____	\$ _____
31		16 Foot Gate	1.	EA	\$ _____	\$ _____
32		Concrete Intersection corner	147.	SY	\$ _____	\$ _____
33		Detectable Warnings	16.	SF	\$ _____	\$ _____
34		City Curb with Spill Gutter	576.	LF	\$ _____	\$ _____
35		City Standard Curb and Gutter	647.	LF	\$ _____	\$ _____
36		Monolithic Drive Over Curb, Gutter and Sidewalk (6'-6" wide)	283.	LF	\$ _____	\$ _____
37		Concrete Drainage Pan (6'-0" width)	38.	LF	\$ _____	\$ _____
38		Median Cover Material (Concrete) 6" Thickness	25.	SY	\$ _____	\$ _____
39		Construction Surveying	1.	LS	\$ _____	\$ _____
40		Mobilization	1.	LS	\$ _____	\$ _____
41		Traffic Control (Complete In Place)	1.	LS	\$ _____	\$ _____
MCR		Minor Contract Revisions	---	---	---	\$ 15,000.00

Bid Amount: \$ _____

Bid Amount: _____ dollars

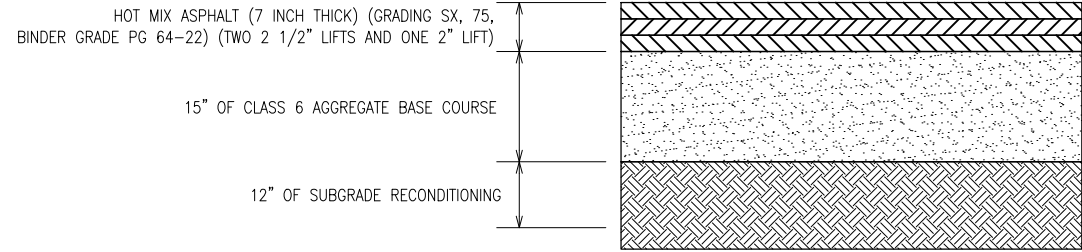
REVISION Δ REV 1	DESCRIPTION	DATE	DRAWN BY	DJM	DATE	2021
REVISION Δ REV 2			DESIGNED BY	DJM	DATE	2021
REVISION Δ REV 3			CHECKED BY	KAH	DATE	2021
REVISION Δ REV 4			APPROVED BY	KAH	DATE	2021

NO SCALE

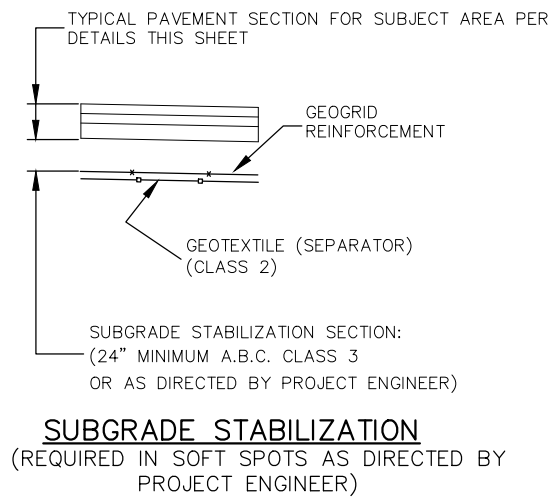


**PUBLIC WORKS
ENGINEERING DIVISION**
PROJECT NO. F210201L

28 1/4 RD & HAWTHORNE AVE
SUMMARY OF APPROXIMATE QUANTITIES
November 12, 2021



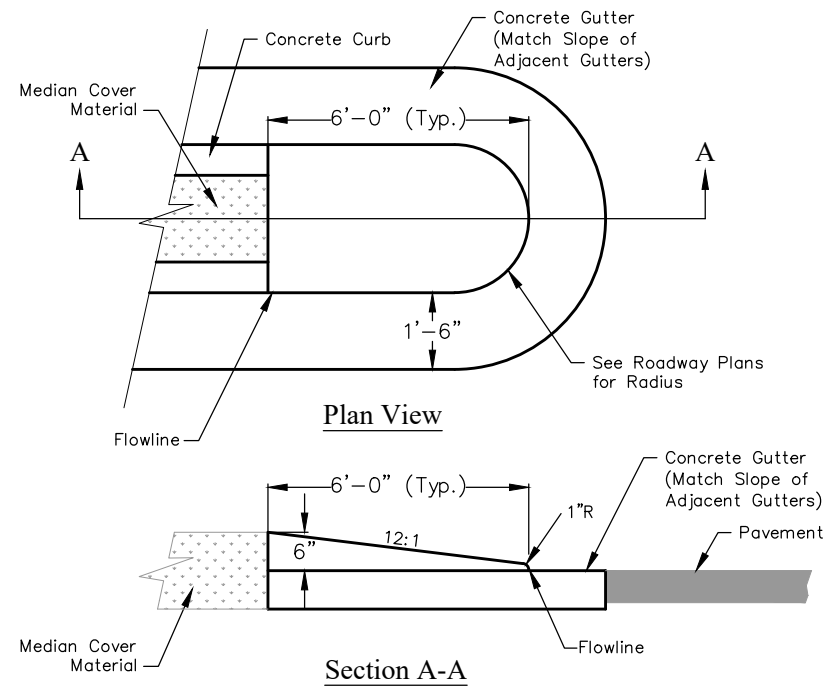
**28 1/4 RD AND HAWTHORNE AVE
ASPHALT PAVEMENT SECTION**
(SEE IMPROVEMENT PLAN FOR EXTENTS
OF THIS ASPHALT PAVEMENT DETAIL)



SUBGRADE STABILIZATION
(REQUIRED IN SOFT SPOTS AS DIRECTED BY
PROJECT ENGINEER)

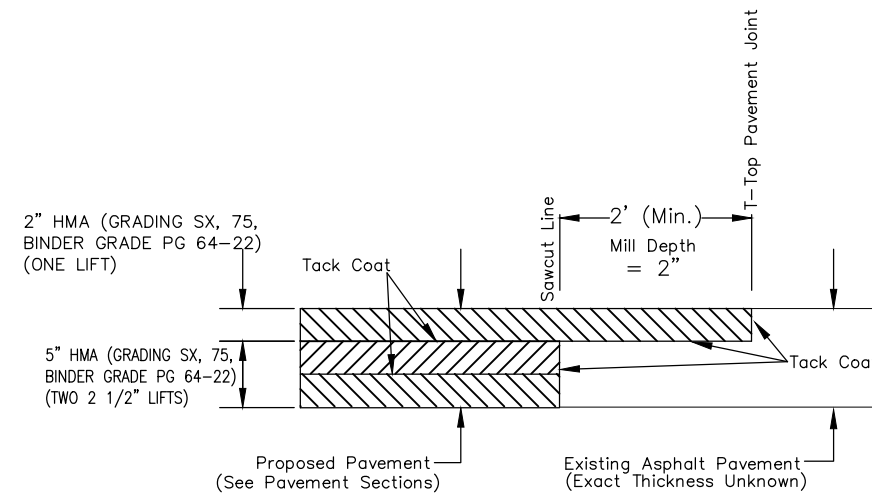
Note:

- The Contractor shall account for up to 25% of the total roadway reconstruction areas (requiring base course and surfacing) requiring subgrade stabilization, as detailed in the Subgrade Stabilization detail, in coming up with his schedule. No adjustment in allowable working time will be considered if the amount of subgrade stabilization is less than 25% of the total roadway reconstruction areas. The work for subgrade stabilization will be paid for separately as Muck Excavation, Aggregate Base Course (Class 3), Geotextile (Separator) (Class 2), and Geogrid Reinforcement.



MEDIAN ISLAND NOSE DETAIL

Notes:
- Median Nose will be included in the cost of curb and gutter and is measured at flow-line.
- Thickness of curb and gutter section shall match concrete pavement thickness.



T-TOP DETAIL

T-TOP NOTES

1. THE MINIMUM T-TOP ASPHALT THICKNESS SHALL BE 2-INCH AND THE MINIMUM WIDTH SHALL BE 2- FEET.
2. THE T-TOP PAVEMENT JOINT SHALL NOT BE LOCATED IN A VEHICLE WHEEL PATH. THE CONTRACTOR SHALL ADJUST THE T-TOP PAVEMENT JOINT ACCORDINGLY.

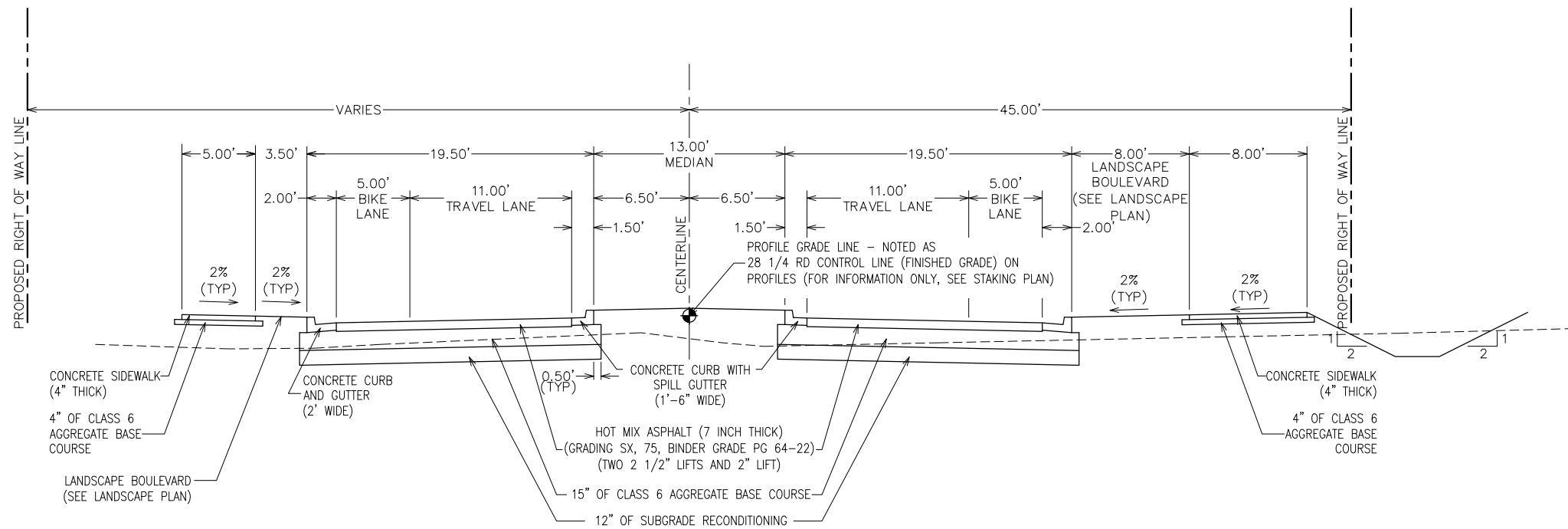
REVISION	DESCRIPTION	DATE	DRAWN BY	DATE
REVISION Δ REV 1			DJM	2021
REVISION Δ REV 2			DJM	2021
REVISION Δ REV 3			KAH	2021
REVISION Δ REV 4			KAH	2021

NO SCALE

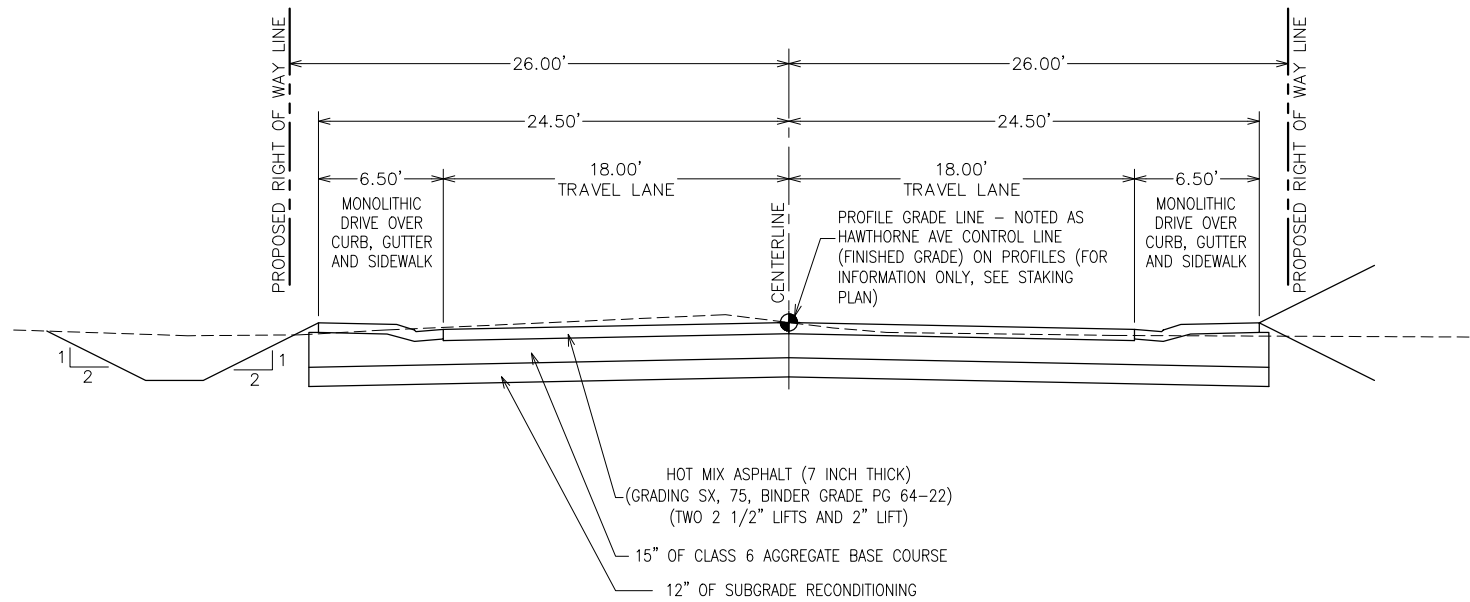


**PUBLIC WORKS
ENGINEERING DIVISION**
PROJECT NO. F210201L

**28 1/4 RD & HAWTHORNE AVE
TYPICAL SECTIONS & DETAILS
November 12, 2021**



28 1/4 ROAD



HAWTHORNE AVENUE

Notes:

- Extend Full Pavement Base Section 6" Beyond Back Of Curbs (Typical)
- See Landscape Plans For Work Between Sidewalk and Back of Curb (Landscape Boulevard) and Medians

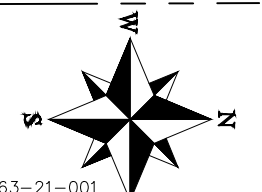
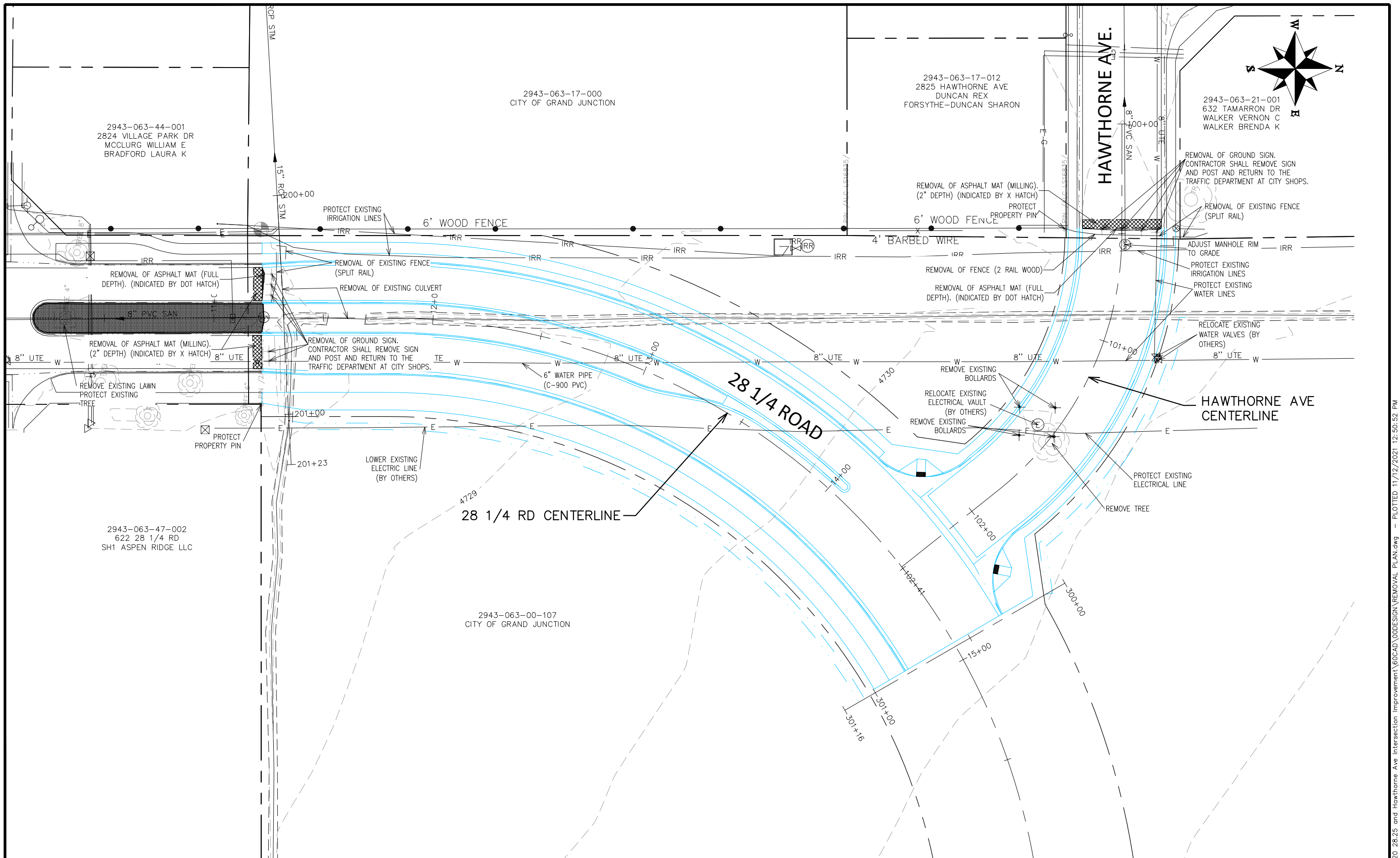
REVISION	DESCRIPTION	DATE	DRAWN BY	DATE
REVISION Δ REV 1			DJM	2021
REVISION Δ REV 2			DJM	2021
REVISION Δ REV 3			KAH	2021
REVISION Δ REV 4			KAH	2021

NO SCALE



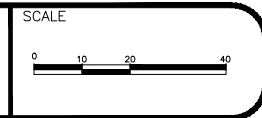
PUBLIC WORKS
ENGINEERING DIVISION
PROJECT NO. F210201L

28 1/4 RD & HAWTHORNE AVE
28 14 RD & HAWTHORNE AVE
November 12, 2021



REVISION	DESCRIPTION	DATE
REVISION Δ REV 1		
REVISION Δ REV 2		
REVISION Δ REV 3		
REVISION Δ REV 4		

DRAWN BY	DJM	DATE	2021
DESIGNED BY	DJM	DATE	2021
CHECKED BY	KAH	DATE	2021
APPROVED BY	KAH	DATE	2021



**PUBLIC WORKS
ENGINEERING DIVISION**
PROJECT NO. F210201L

**28 1/4 RD & HAWTHORNE AVE
REMOVAL PLAN**
November 12, 2021

N:\landproj\2020 28.25 and Hawthorne Ave Intersection Improvement\60CAD\00DESIGN\REMOVAL PLAN.dwg - PLOTTED 11/12/2021 12:50:52 PM

GENERAL NOTES:

- 1 PURPOSE: TO SEARCH, INTERPRET, AND DEPICT SPECIFIC EXISTING UNDERGROUND UTILITIES AS PER THE SCOPE OF WORK FOR THE 28 1/4 ROAD AND HAWTHORNE AVE PROJECT.
- 2 THE SUBSURFACE UTILITIES SHOWN ON THE SUBSURFACE UTILITY INVESTIGATION WERE IDENTIFIED USING APPROPRIATE INDUSTRY STANDARD DETECTION METHODOLOGIES IN ACCORDANCE WITH THE AMERICAN SOCIETY OF CIVIL ENGINEERS (ASCE) STANDARD GUIDELINE FOR THE COLLECTION AND DEPICTION OF EXISTING SUBSURFACE UTILITY DATA. QUALITY LEVELS AND DEFINITIONS PER CI/ASCE STANDARD NO. 38.
- 3 QUALITY LEVEL "D" – QL-D – DEPICTED ACCORDING TO UTILITY RECORD INFORMATION AND IN-FIELD VISUAL INSPECTION. NO ELECTRONIC DESIGNATING INFORMATION WAS OBTAINED. UTILITIES WITH A QL-D LABEL ARE DEPICTED ON THE PLANS USING PROFESSIONAL JUDGMENT IN INTERPRETING THIRD-PARTY RECORDS OR OTHER INFORMATION.
- 4 QUALITY LEVEL "C" – QL-C – EXISTING UTILITY STRUCTURES HAVE BEEN FIELD LOCATED AND SURVEYED TO ASSIST IN THE DEPICTING OF THE UTILITIES SHOWN ON THE RECORDS. NO ELECTRONIC DESIGNATING INFORMATION WAS OBTAINED. UTILITIES WITH A QL-C LABEL ARE DEPICTED ON THE PLANS USING PROFESSIONAL JUDGMENT IN INTERPRETING AND CORRELATING THE SURVEYED UTILITY APPURTENANCES, WITH THIRD-PARTY RECORDS INFORMATION.
- 5 QUALITY LEVEL "B" – QL-B – INFORMATION WAS OBTAINED THROUGH THE APPLICATION OF APPROPRIATE SURFACE GEOPHYSICAL METHODS TO DETERMINE THE EXISTENCE AND APPROXIMATE HORIZONTAL POSITION OF THE SUBSURFACE UTILITIES. QL-B DATA SHOULD BE REPRODUCIBLE BY SURFACE GEOPHYSICS AT ANY POINT OF THEIR DEPICTION. ALL UTILITIES ARE QL-B UNLESS OTHERWISE NOTED. THEY ARE DEPICTED ON THE PLANS USING PROFESSIONAL JUDGMENT IN SELECTING AND INTERPRETING APPROPRIATE GEOPHYSICAL DATA, SURVEYING TO APPROPRIATE PROJECT ACCURACIES, AND USING JUDGMENT TO CORRELATE THIRD-PARTY RECORDS OR OTHER INFORMATION, IF AVAILABLE, TO THESE QL-B DEPICTIONS.
- 6 QUALITY LEVEL "A" – QL-A – OBTAIN PRECISE HORIZONTAL AND VERTICAL POSITION OF THE UTILITY LINE BY EXCAVATING A TEST HOLE. THE TEST HOLE SHALL BE DONE USING VACUUM EXCAVATION OR COMPARABLE NON-DESTRUCTIVE EQUIPMENT IN A MANNER AS TO CAUSE NO DAMAGE TO UTILITY LINE.
- 7 RELIANCE UPON SUBSURFACE UTILITY DATA FOR RISK MANAGEMENT PURPOSES DURING BIDDING DOES NOT RELIEVE THE EXCAVATOR OR UTILITY OWNER FROM FOLLOWING ALL APPLICABLE UTILITY DAMAGE PREVENTION STATUTES, POLICIES, AND/OR PROCEDURES DURING EXCAVATION.
- 8 IT IS IMPORTANT THAT THE CONTRACTOR INVESTIGATES AND UNDERSTANDS THE SCOPE OF WORK AND LIMITS OF THE UTILITY INVESTIGATIONS LEADING TO THESE UTILITY DEPICTIONS.
- 9 UTILITY SIZE AND TYPE ARE DETERMINED THROUGH AVAILABLE UTILITY OWNER INFORMATION OR FIELD OBSERVATIONS; UTILITIES LABELED AS UNKNOWN HAVE NO CORRELATED RECORDS OR VISIBLE APPURTENANCES TO DETERMINE FUNCTION OR TYPE.
- 10 UTILITY MAPPING WAS COMPLETED IN THE FIELD ON 8/06/2021. UTILITIES MAY HAVE BEEN CHANGED OR ADDED AFTER THIS DATE.
- 11 "END OF INFORMATION" (EOI) SIGNIFIES GEOPHYSICAL EQUIPMENT LOST THE SIGNAL OF THE TARGET UTILITY AND THE LINE WAS UNABLE TO BE DESIGNATED ANY FURTHER. LINES MAY CONTINUE ON OR MAY STOP. POSITIVE VERIFICATION BY EXCAVATION IS REQUIRED TO CONFIRM PRESENCE BEYOND END OF SIGNAL.
- 12 THE FOLLOWING EQUIPMENT WAS USED IN THE UTILITY INVESTIGATION: VM-810 METROTECH UTILITY LINE LOCATOR, TRIMBLE GPS SURVEY CONTROL AND/OR TOTAL STATION.
- 13 HORIZONTAL COORDINATE SYSTEM: PROJECT COORDINATES ARE BASED ON MESA COUNTY LOCAL COORDINATE SYSTEM, MCLS ZONE GVA.
- 14 VERTICAL DATUM: WGS 1984
- 15 SEE THE STANDARD ABBREVIATIONS, LEGENDS, AND SYMBOLS FOR UTILITY LINE LINE TYPE DEPICTIONS, UTILITY APPURTENANCES SYMBOLS, AND ABBREVIATIONS USED FOR THE SUBSURFACE UTILITY ENGINEERING PLAN.
- 16 THE FOLLOWING COMPANIES HAVE NOT SUPPLIED RECORDS AS OF ??/??/202?: ??????
- 17 THE OWNERS WITHIN THE PROJECT LIMITS ARE LISTED IN THE TABLE BELOW BUT MAY NOT BE LIMITED TO THOSE LISTED IN THE TABLE.

UTILITIES AND AGENCIES								
AGENCY	NAME	POSITION	ROLE	MAILING ADDRESS	STREET ADDRESS	CITY, STATE	VOICE-WK	FAX
CITY OF GRAND JUNCTION	BILL ETCHEVERRY	COLLECTION SYSTEM SUPERVISOR	SANITARY SEWER	333 WEST AVE BLDG C	333 WEST AVE BLDG C	GRAND JCT., CO 81501	(970) 256-4167	(970) 256-8620
CITY OF GRAND JUNCTION	TOM LANAM	TRAFFIC SUPERVISOR	TRAFFIC	333 WEST AVE BLDG D	333 WEST AVE BLDG D	GRAND JCT., CO 81501	(970) 244-1573	(970) 256-4022
GRAND VALLEY IRRIGATION COMPANY	PHIL BERTRAND	IRRIGATION SUPERINTENDENT	IRRIGATION	988 26 RD	988 26 RD	GRAND JCT., CO 81506	(970) 242-2762	
SPECTRUM	MARK KOSTELECKY	MANAGER	CABLE TV	2502 FORESIGHT CIRCLE	2502 FORESIGHT CIRCLE	GRAND JCT., CO 81504	(970) 245-8750	(970) 245-6803
CENTURYLINK	CHRIS JOHNSON	ENGINEER	TELEPHONE	2524 BLICHMANN AVE	2524 BLICHMANN AVE	GRAND JCT., CO 81504	(970) 244-4311	(970) 240-4349
UTE WATER	JUSTIN BATES	SUPERVISOR	WATER	PO BOX 460	2190 H ¼ RD	GRAND JCT., CO 81502	(970) 242-7491	(970) 242-9189
XCEL	BRENDA BOES	UNIT MANAGER	ELECTRIC	2538 BLICHMANN AVE	2538 BLICHMANN AVE	GRAND JCT., CO 81506	(970) 244-2664	(970) 244-2664
XCEL	SARAH DARRICAU	UNIT MANAGER	GAS	2538 BLICHMANN AVE	2538 BLICHMANN AVE	GRAND JCT., CO 81506	(970) 244-2656	(970) 244-2656
GRAND VALLEY POWER	MIKE GARDNER	SUPERVISOR	ELECTRIC	845 22 RD	845 22 RD	GRAND JCT., CO 81505	(970) 242-0040	
UNITE PRIVATE NETWORKS			COMMUNICATION	123 N 7TH ST., #100	123 N 7TH ST., #100	GRAND JCT., CO 81501	(866) 813-3608	

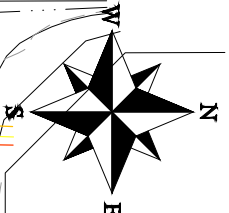
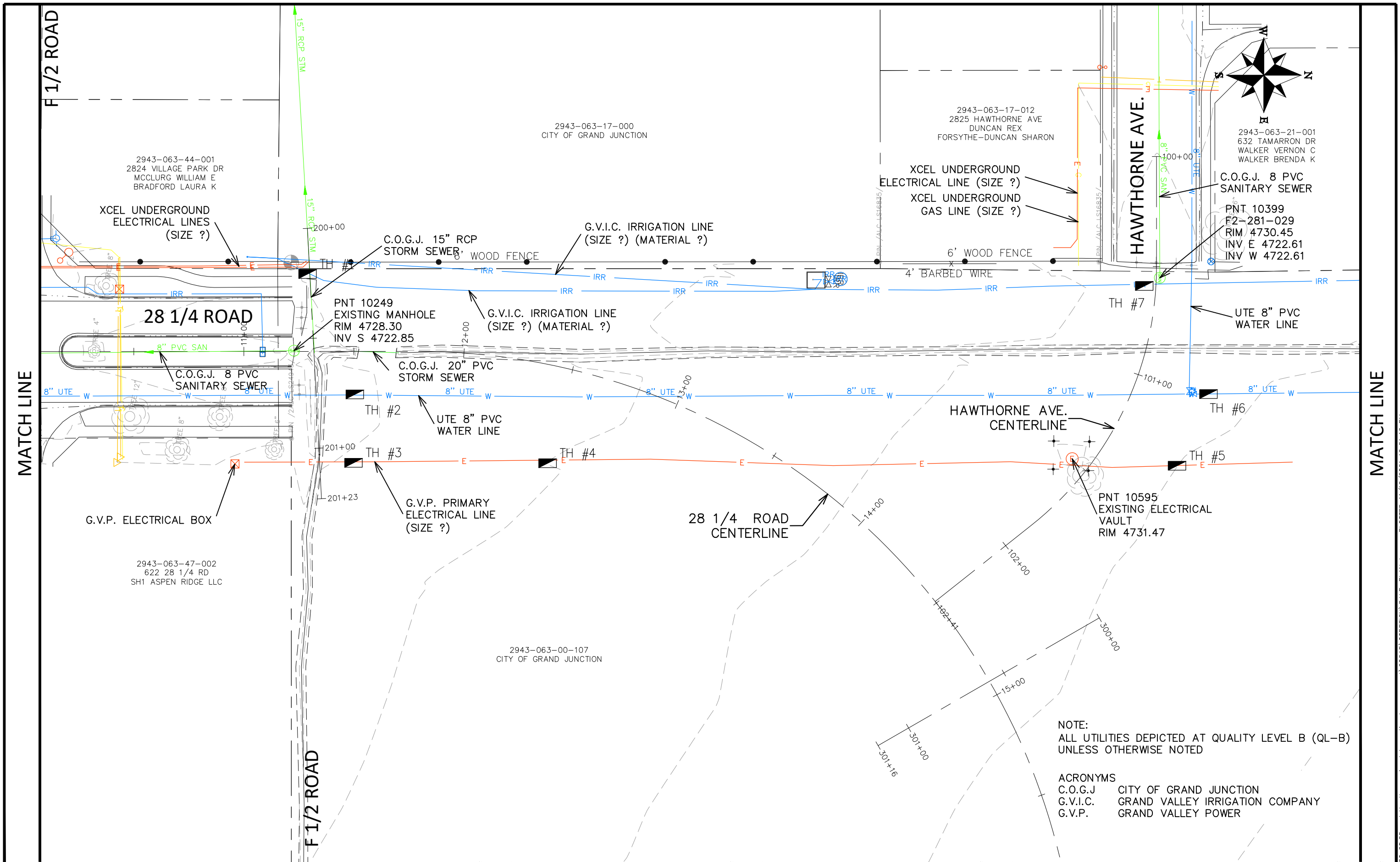
REVISION Δ REV 1	DESCRIPTION	DATE	DRAWN BY DJM	DATE 2021
REVISION Δ REV 2			DESIGNED BY DJM	DATE 2021
REVISION Δ REV 3			CHECKED BY KAH	DATE 2021
REVISION Δ REV 4			APPROVED BY KAH	DATE 2021

NO SCALE



PUBLIC WORKS
ENGINEERING DIVISION
PROJECT NO. F210201L

28 1/4 RD & HAWTHORNE AVE
SUE GENERAL NOTES
November 12, 2021



NOTE:
ALL UTILITIES DEPICTED AT QUALITY LEVEL B (QL-B)
UNLESS OTHERWISE NOTED

ACRONYMS
C.O.G.J. CITY OF GRAND JUNCTION
G.V.I.C. GRAND VALLEY IRRIGATION COMPANY
G.V.P. GRAND VALLEY POWER

REVISION	DESCRIPTION	DATE
REVISION Δ REV 1		
REVISION Δ REV 2		
REVISION Δ REV 3		
REVISION Δ REV 4		

DRAWN BY	DJM	DATE	2021
DESIGNED BY	DJM	DATE	2021
CHECKED BY	KAH	DATE	2021
APPROVED BY	KAH	DATE	2021

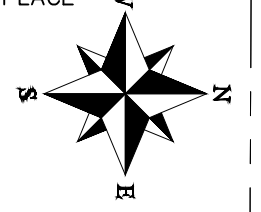


**PUBLIC WORKS
ENGINEERING DIVISION**
PROJECT NO. F210201L

**28 1/4 RD & HAWTHORNE AVE
SUBSURFACE UTILITY**
November 12, 2021

N:\landproj\2020 28.25 and Hawthorne Ave Intersection Improvement\60CAD\00DESIGN\S.U.E. PLAN.dwg - PLOTTED 11/12/2021 12:51:12 PM

2943-063-21-001
632 TAMARRON DR
WALKER VERNON C
WALKER BRENDA K



2943-063-17-000
CITY OF GRAND JUNCTION

2943-063-44-001
2824 VILLAGE PARK DR
MCCLURG WILLIAM E
BRADFORD LAURA K

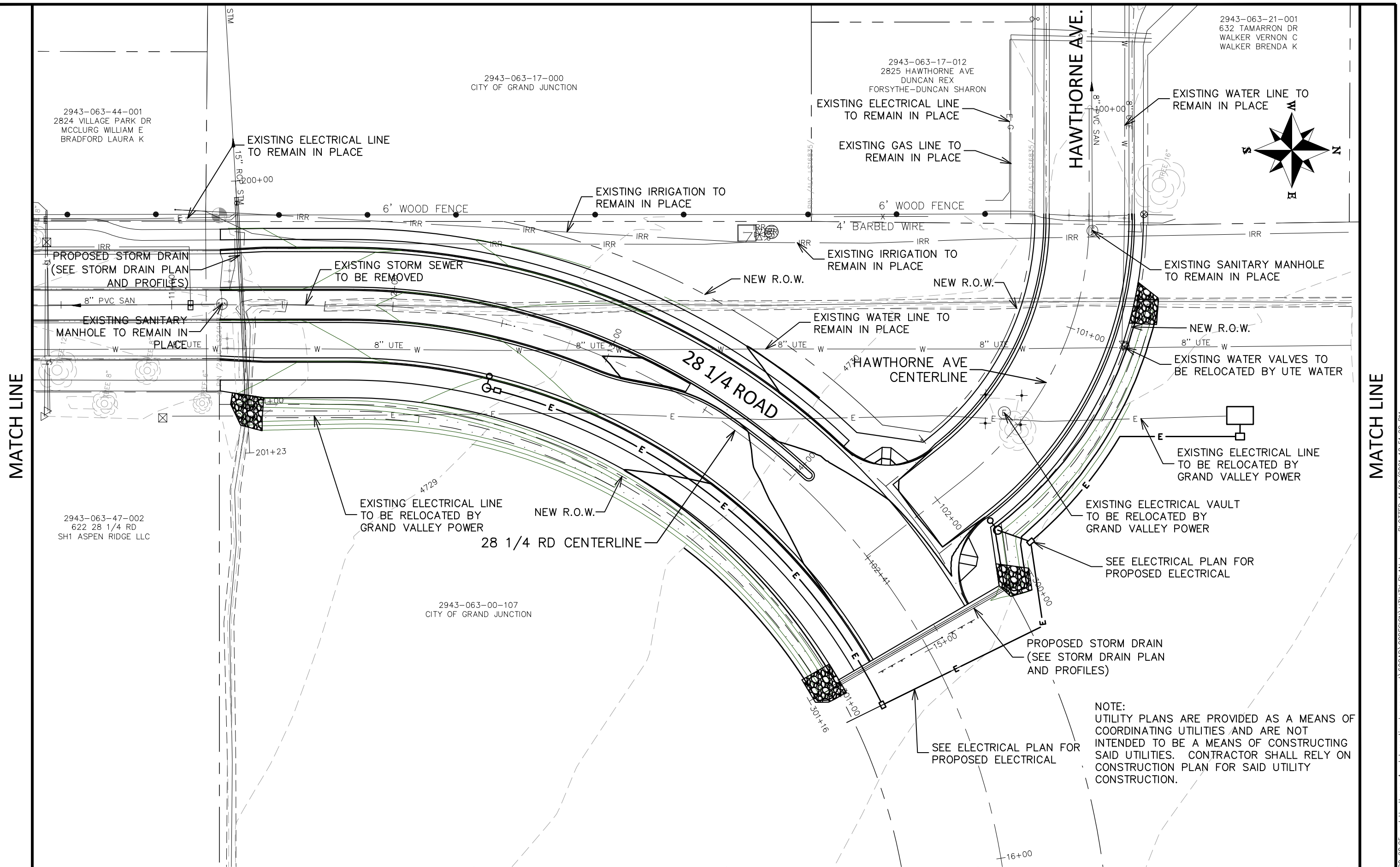
2943-063-17-012
2825 HAWTHORNE AVE
DUNCAN REX
FORSYTHE-DUNCAN SHARON

2943-063-47-002
622 28 1/4 RD
SH1 ASPEN RIDGE LLC

2943-063-00-107
CITY OF GRAND JUNCTION

MATCH LINE

MATCH LINE



NOTE:
UTILITY PLANS ARE PROVIDED AS A MEANS OF
COORDINATING UTILITIES AND ARE NOT
INTENDED TO BE A MEANS OF CONSTRUCTING
SAID UTILITIES. CONTRACTOR SHALL RELY ON
CONSTRUCTION PLAN FOR SAID UTILITY
CONSTRUCTION.

REVISION	DESCRIPTION	DATE
REVISION Δ REV 1		
REVISION Δ REV 2		
REVISION Δ REV 3		
REVISION Δ REV 4		

DRAWN BY DJM DATE 2021
DESIGNED BY DJM DATE 2021
CHECKED BY KAH DATE 2021
APPROVED BY KAH DATE 2021



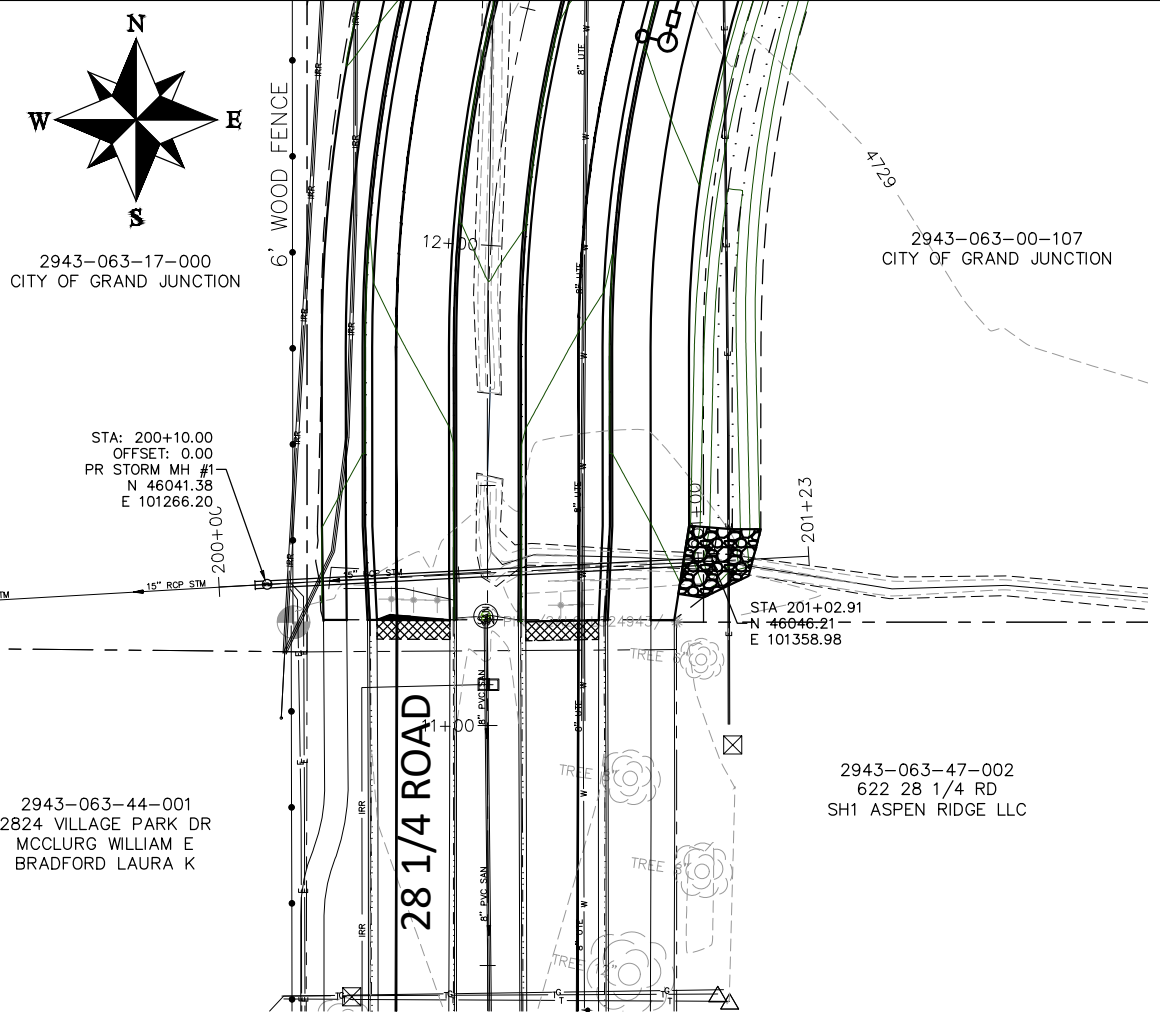
**PUBLIC WORKS
ENGINEERING DIVISION**
PROJECT NO. F210201L

**28 1/4 RD & HAWTHORNE AVE
UTILITY PLAN**
November 12, 2021

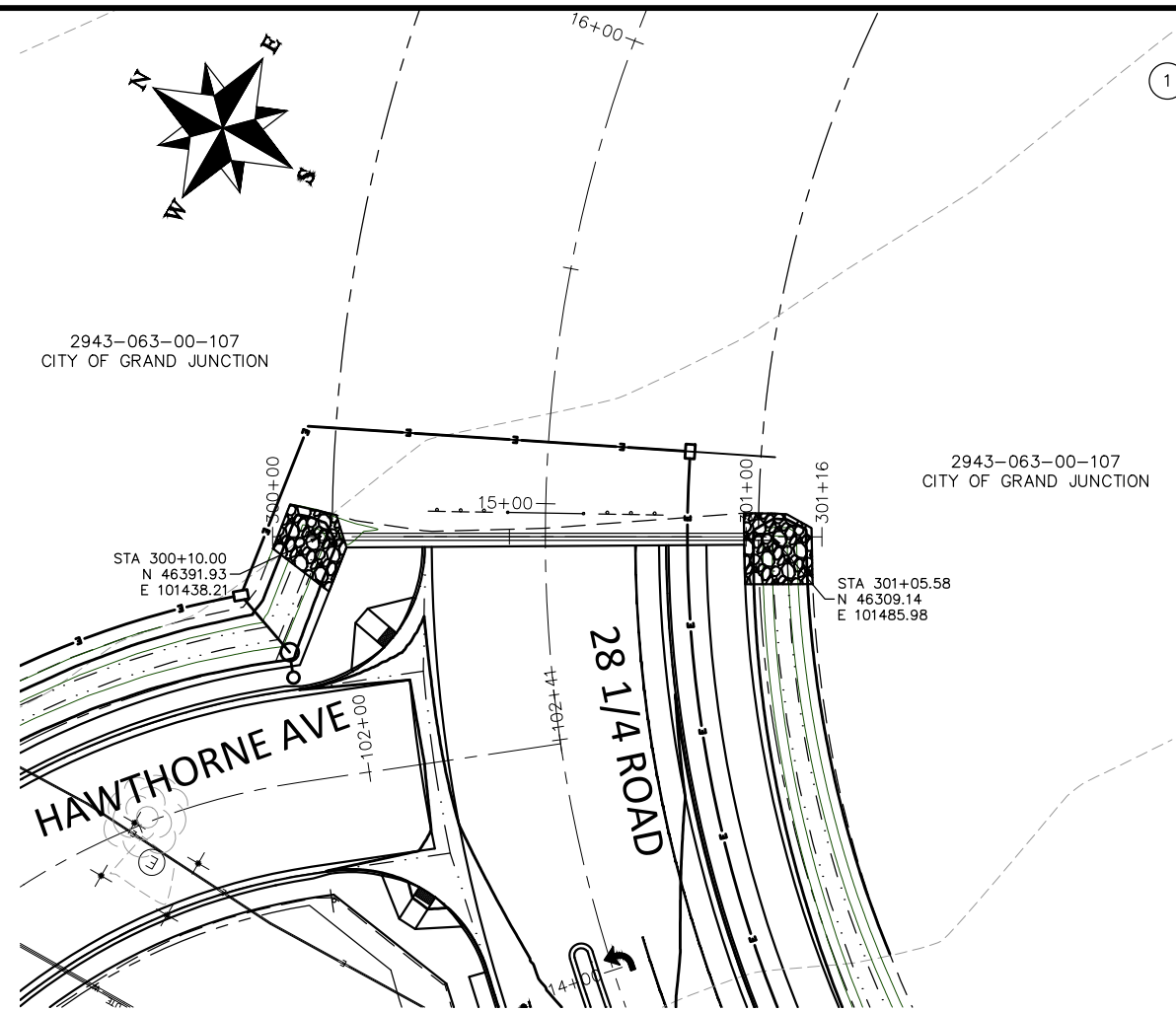
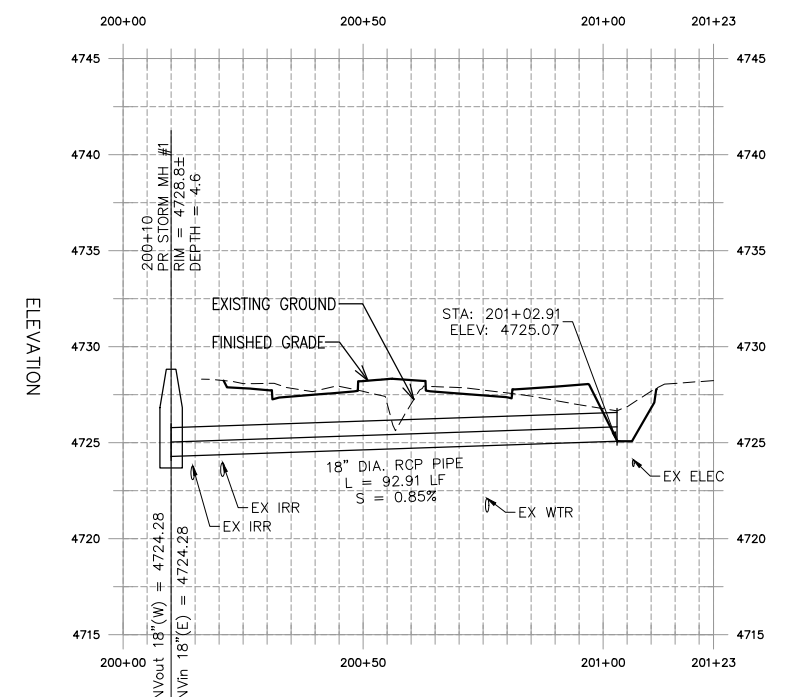
N:\landproj\2020 28.25 and Hawthorne Ave Intersection Improvement\60CAD\00DESIGN\UTILITY PLAN.dwg - PLOTTED 11/12/2021 12:51:28 PM

CONSTRUCTION NOTES

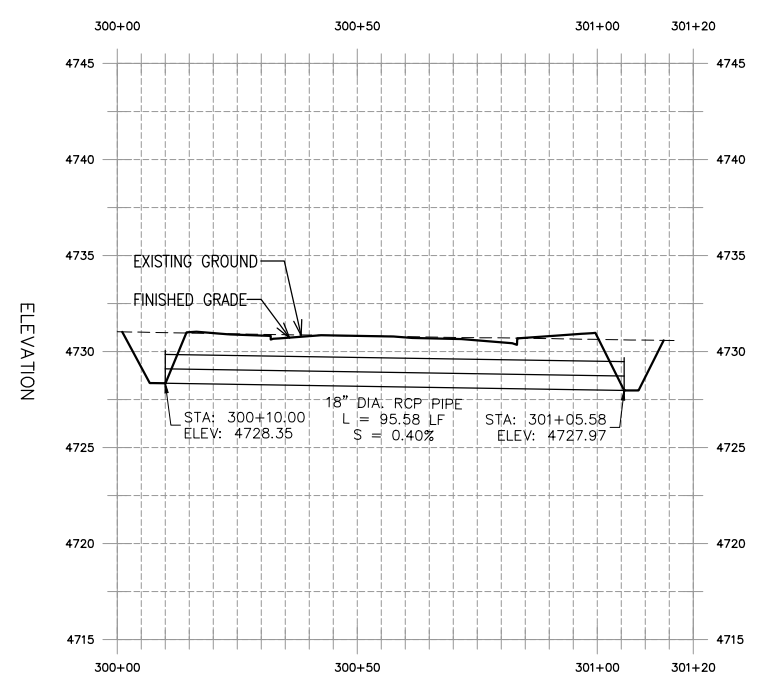
- 1 GENERATE CONSTRUCTION NOTES USING PROCESS AND SPREADSHEET



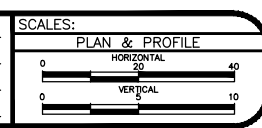
STATION



STATION



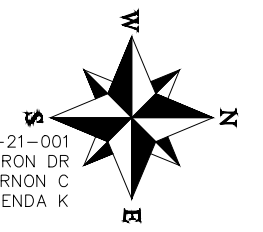
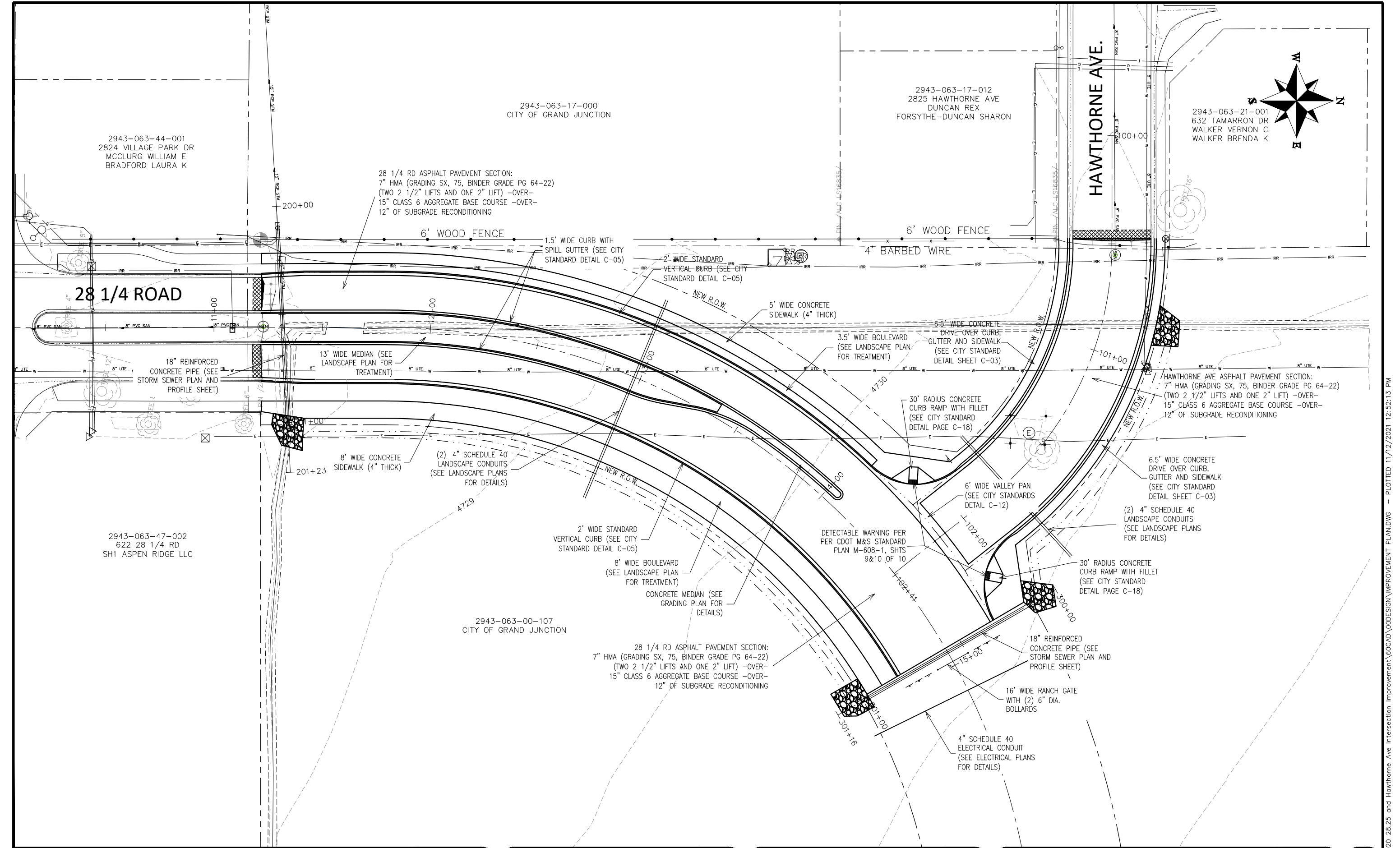
REVISION	DESCRIPTION	DATE	DRAWN BY	DATE	DESIGNED BY	DATE	CHECKED BY	DATE	APPROVED BY	DATE
REVISION Δ REV 1			DJM	2021	DJM	2021	KAH	2021	KAH	2021
REVISION Δ REV 2										
REVISION Δ REV 3										
REVISION Δ REV 4										



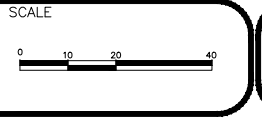
**PUBLIC WORKS
ENGINEERING DIVISION**
PROJECT NO. F210201L

**28 1/4 RD & HAWTHORNE AVE
STORM SEWER PLAN AND PROFILE**
November 12, 2021

N:\Landpro\2020 28.25 and Hawthorne Ave Intersection Improvement\60CAD\00DESIGN\XX STORM PLAN AND PROFILE XX.dwg - PLOTTED 11/12/2021 12:51:57 PM



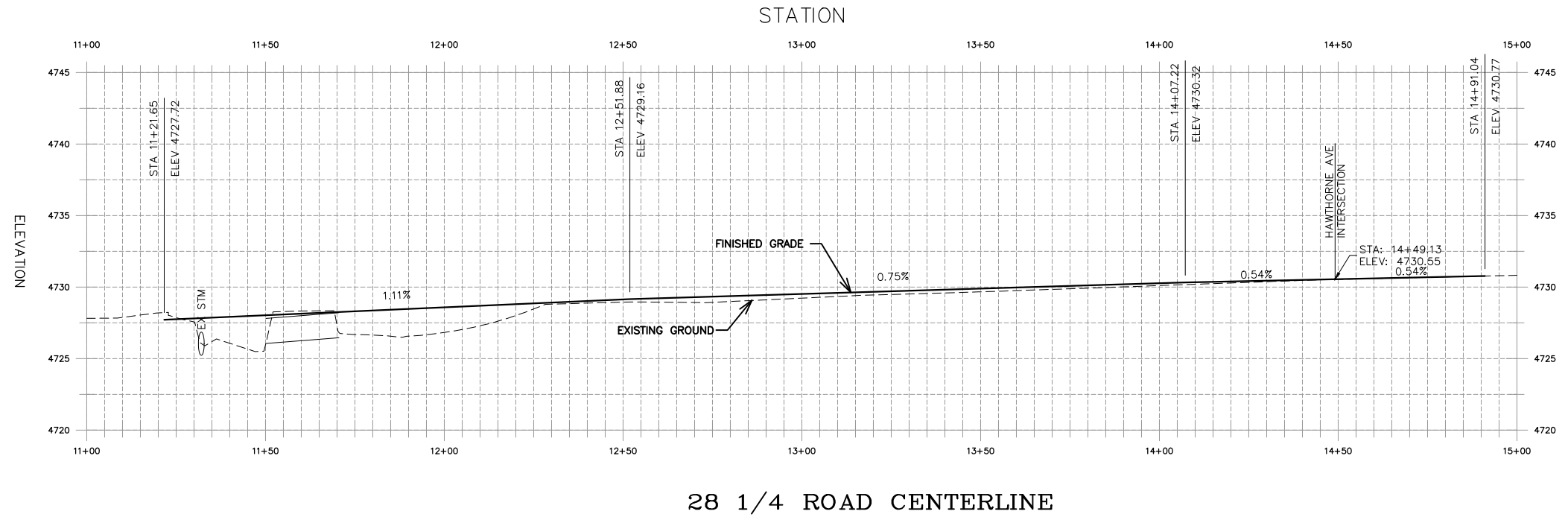
REVISION	DESCRIPTION	DATE	DRAWN BY	DATE
REVISION Δ REV 1			DJM	2021
REVISION Δ REV 2			DJM	2021
REVISION Δ REV 3			KAH	2021
REVISION Δ REV 4			KAH	2021



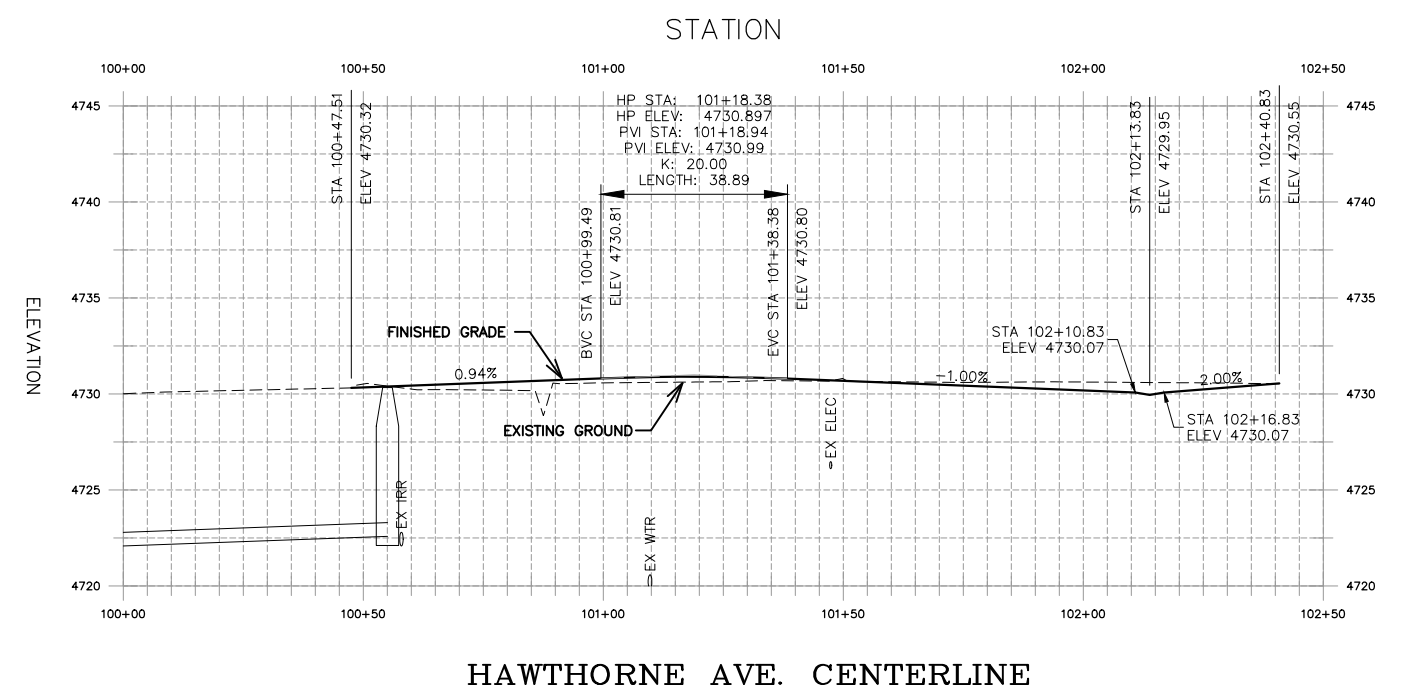
**PUBLIC WORKS
ENGINEERING DIVISION**
PROJECT NO. F210201L

**28 1/4 RD & HAWTHORNE AVE
IMPROVEMENT PLAN**
November 12, 2021

N:\landpro\2020_28.25 and Hawthorne Ave Intersection Improvement\60CAD\00DESIGN\IMPROVEMENT PLAN.DWG - PLOTTED 11/12/2021 12:52:13 PM



28 1/4 ROAD CENTERLINE



HAWTHORNE AVE. CENTERLINE

REVISION	DESCRIPTION	DATE	DRAWN BY	DATE
REVISION			DJM	2021
REVISION			DJM	2021
REVISION			KAH	2021
REVISION			KAH	2021

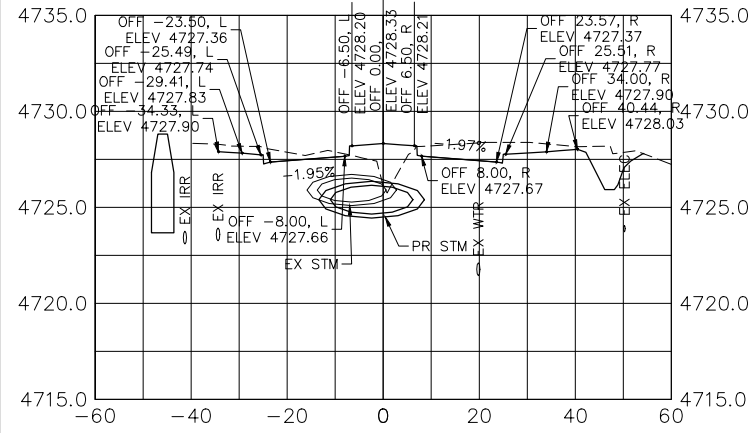
SCALES:	
PLAN & PROFILE	
HORIZONTAL	1" = 40'
VERTICAL	1" = 5'



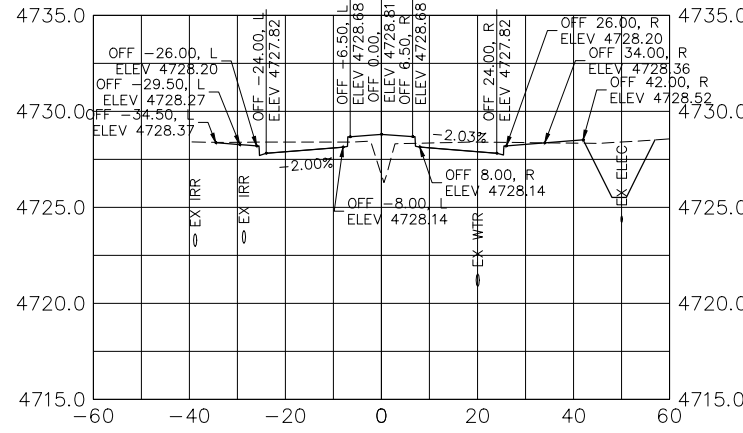
**PUBLIC WORKS
ENGINEERING DIVISION**
PROJECT NO. F210201L

**28 1/4 RD & HAWTHORNE AVE
ROAD PROFILES**
November 12, 2021

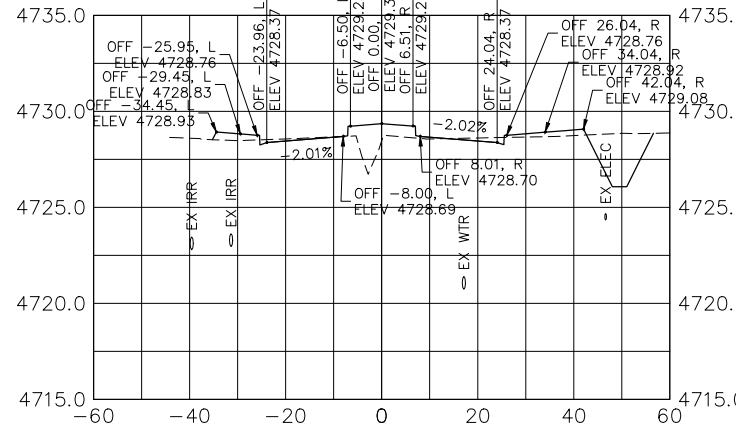
N:\landproj\2020 28.25 and Hawthorne Ave Intersection Improvement\60CAD\00DESIGN\ROAD PROFILE.dwg - PLOTTED 11/12/2021 12:52:31 PM



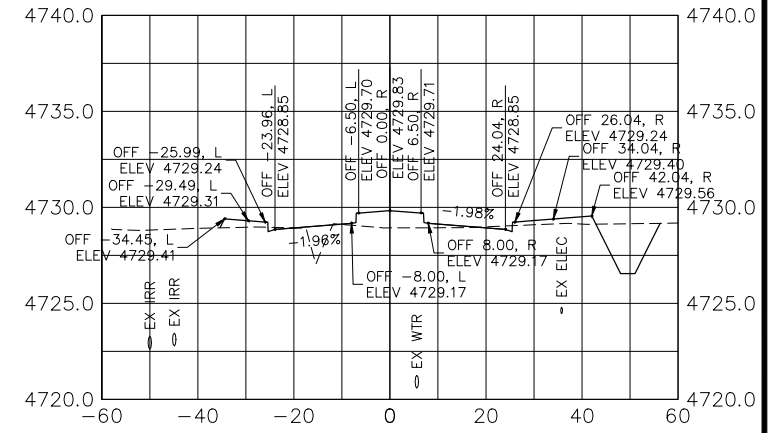
11+31.65



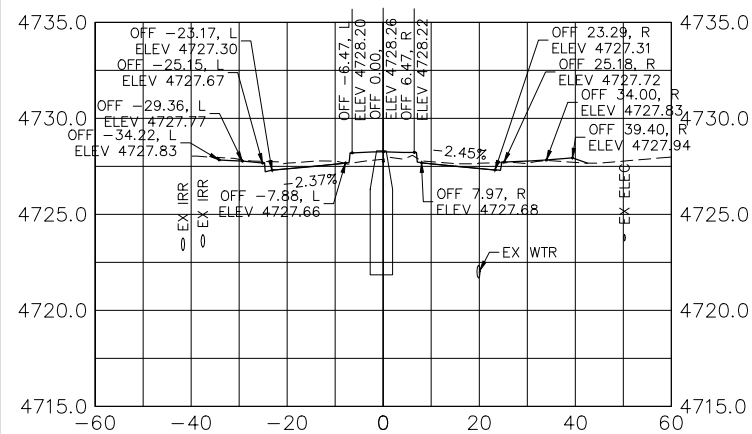
11+75.00



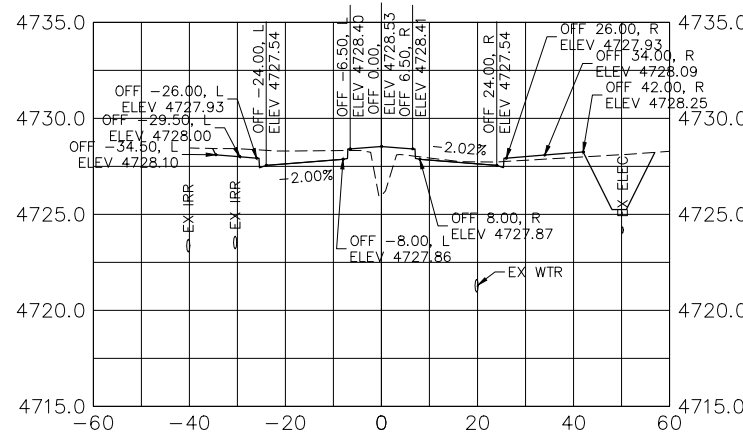
12+25.00



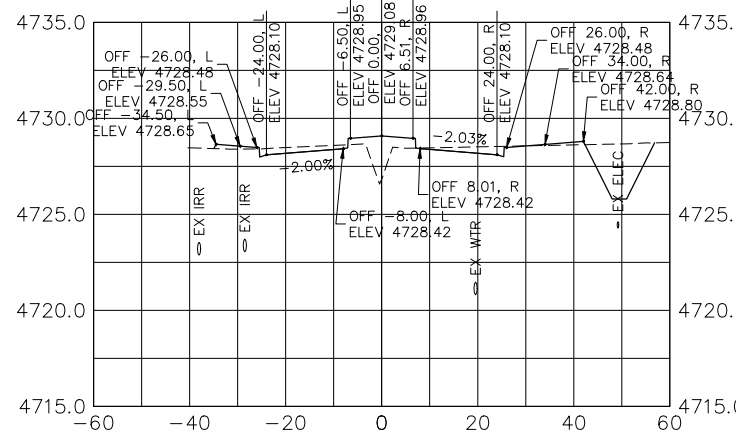
12+75.00



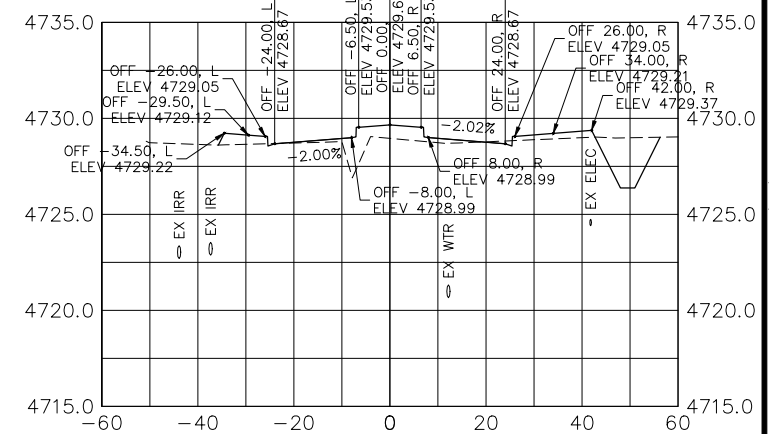
11+25.00



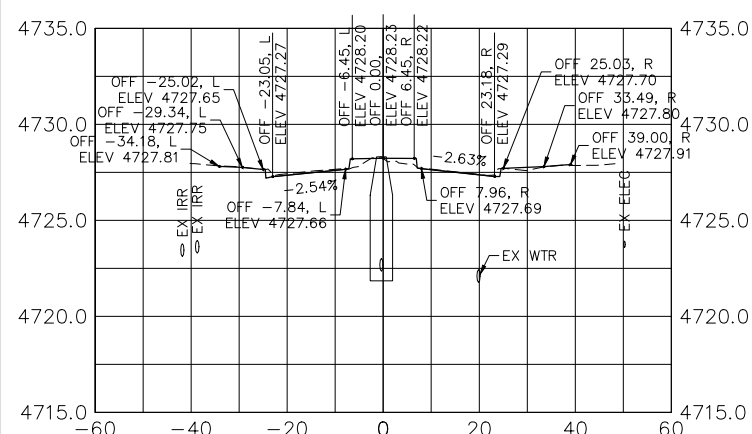
11+50.00



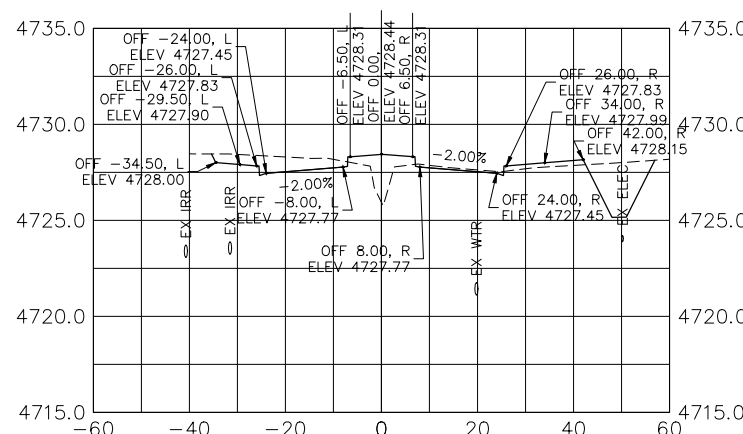
12+00.00



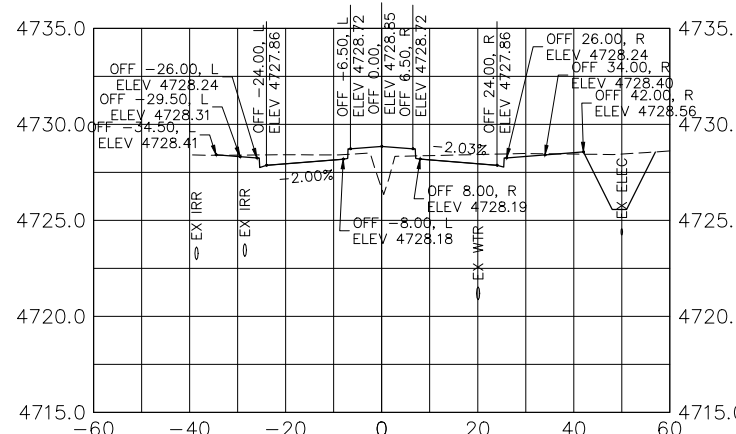
12+51.88



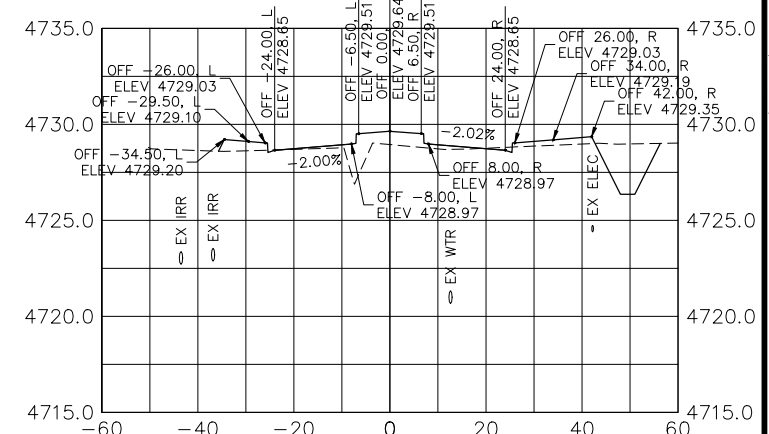
11+22.50



11+41.56



11+78.82

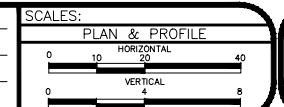


12+50.00

28 1/4 ROAD

REVISION	DESCRIPTION	DATE
REVISION A		
REVISION B		
REVISION C		
REVISION D		

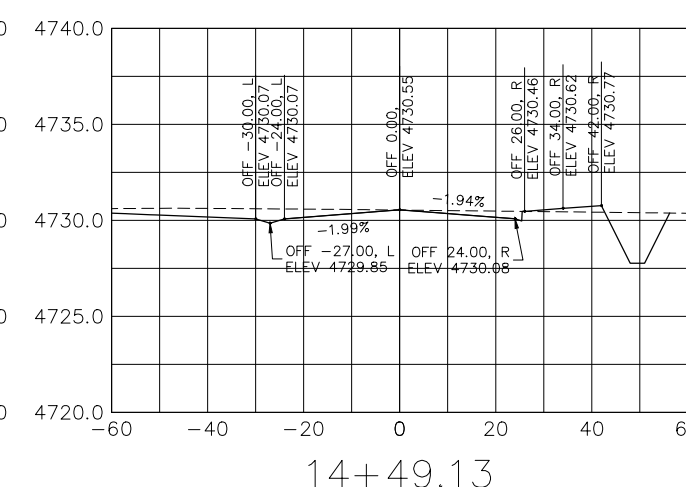
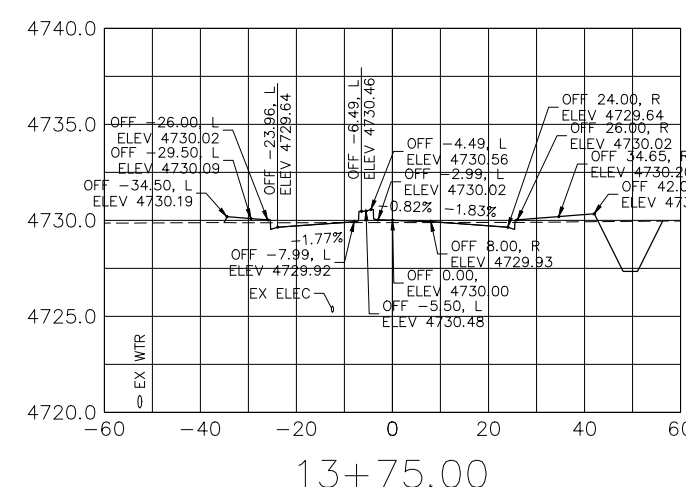
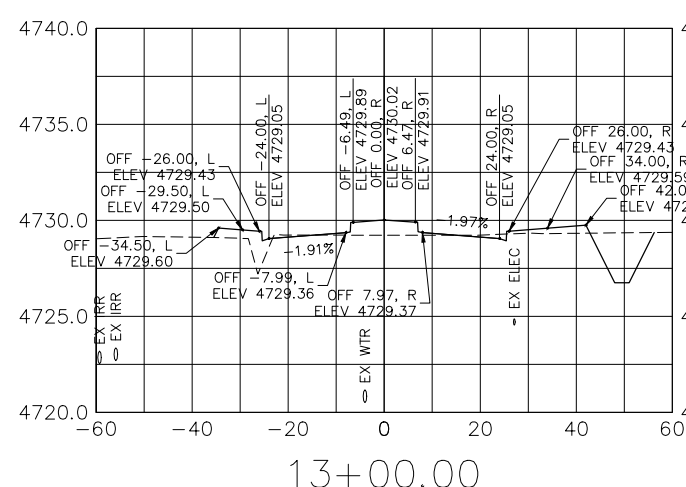
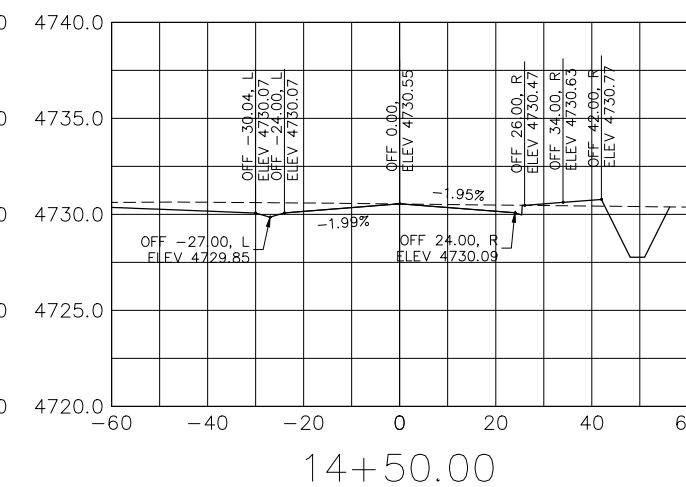
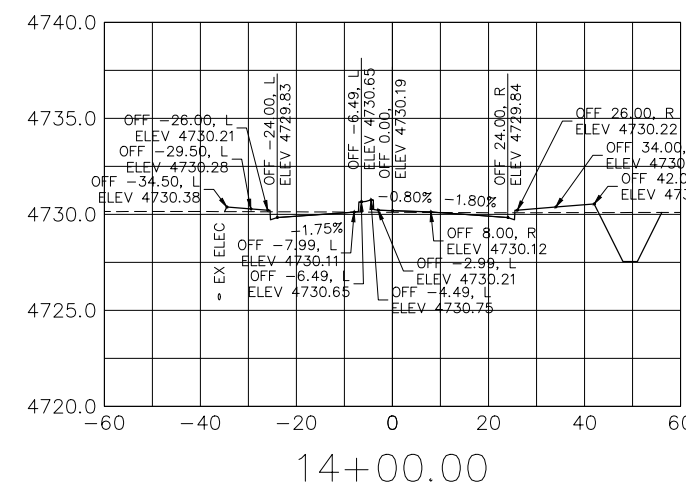
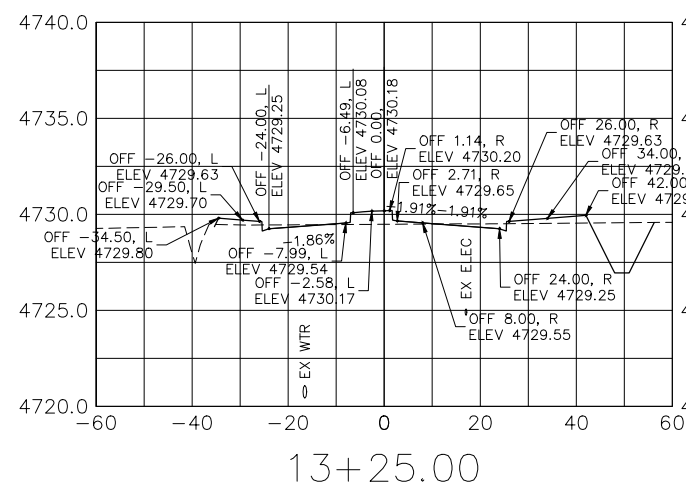
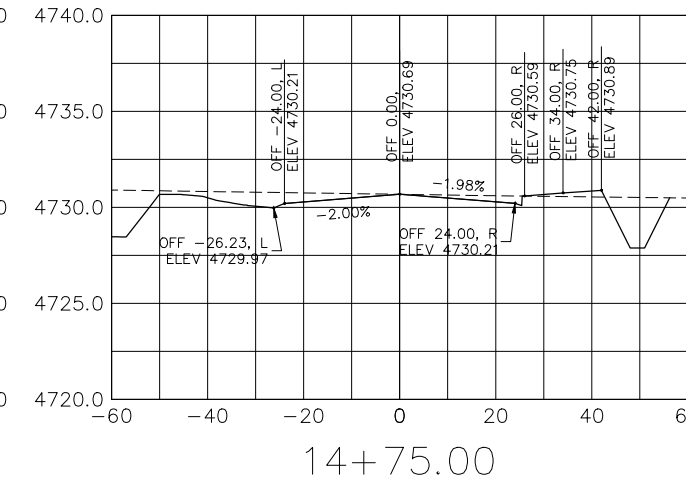
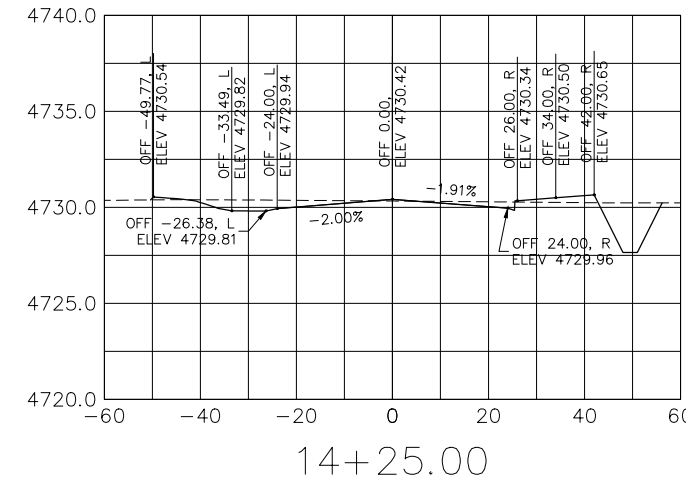
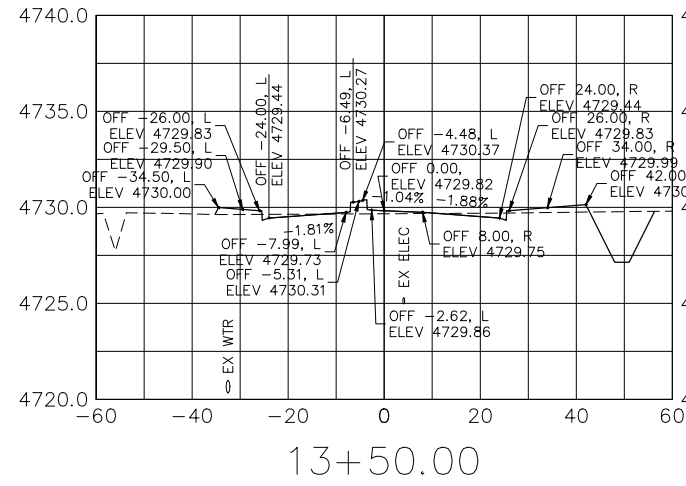
DRAWN BY	DJM	DATE	2021
DESIGNED BY	DJM	DATE	2021
CHECKED BY	KAH	DATE	2021
APPROVED BY	KAH	DATE	2021



PUBLIC WORKS
ENGINEERING DIVISION
PROJECT NO. F210201L

28 1/4 RD & HAWTHORNE AVE
ROAD CROSS SECTIONS
November 12, 2021

N:\landproj\2020 28.25 and Hawthorne Ave Intersection Improvement\60CAD\ODDESIGN\ROAD CROSS SECTION.dwg - PLOTTED 11/12/2021 12:53:34 PM



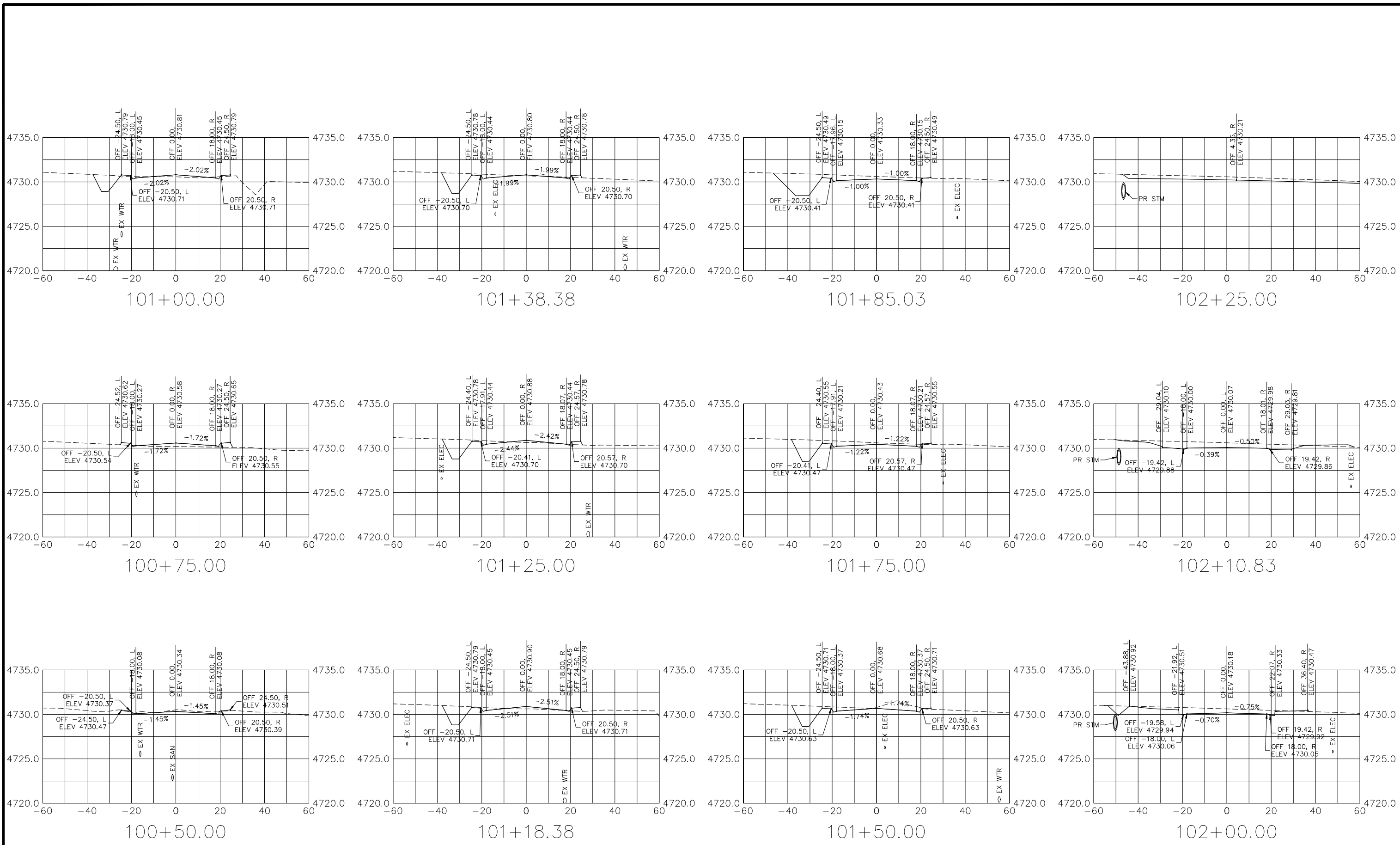
REVISION	DESCRIPTION	DATE	DRAWN BY	DATE	SCALES:
REVISION			DJM	2021	PLAN & PROFILE
REVISION			DJM	2021	HORIZONTAL 1"=40'
REVISION			KAH	2021	VERTICAL 1"=8'
REVISION			KAH	2021	



**PUBLIC WORKS
ENGINEERING DIVISION**
PROJECT NO. F210201L

**28 1/4 RD & HAWTHORNE AVE
ROAD CROSS SECTIONS**
November 12, 2021

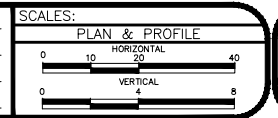
N:\landproj\2020 28.25 and Hawthorne Ave Intersection Improvement\60CAD\00DESIGN\ROAD CROSS SECTION.dwg - PLOTTED 11/12/2021 12:54:16 PM



HAWTHORNE AVENUE

REVISION	DESCRIPTION	DATE
REVISION		
REVISION		
REVISION		

DRAWN BY	DJM	DATE	2021
DESIGNED BY	DJM	DATE	2021
CHECKED BY	KAH	DATE	2021
APPROVED BY	KAH	DATE	2021



**PUBLIC WORKS
ENGINEERING DIVISION**
PROJECT NO. F210201L

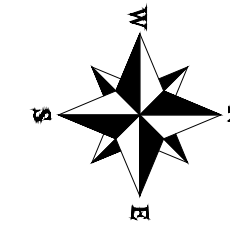
**28 1/4 RD & HAWTHORNE AVE
ROAD CROSS SECTIONS**
November 12, 2021

N:\Landproj\2020 28.25 and Hawthorne Ave Intersection Improvement\60CAD\00DESIGN\ROAD CROSS SECTION.dwg - PLOTTED 11/12/2021 12:55:09 PM

2943-063-17-000
CITY OF GRAND JUNCTION

2943-063-17-012
2825 HAWTHORNE AVE
DUNCAN REX
FORSYTHE-DUNCAN SHARON

2943-063-21-001
632 TAMARRON DR
WALKER VERNON C
WALKER BRENDA K



2943-063-00-107
CITY OF GRAND JUNCTION

2943-063-00-107
CITY OF GRAND JUNCTION

MATCH LINE

MATCH LINE

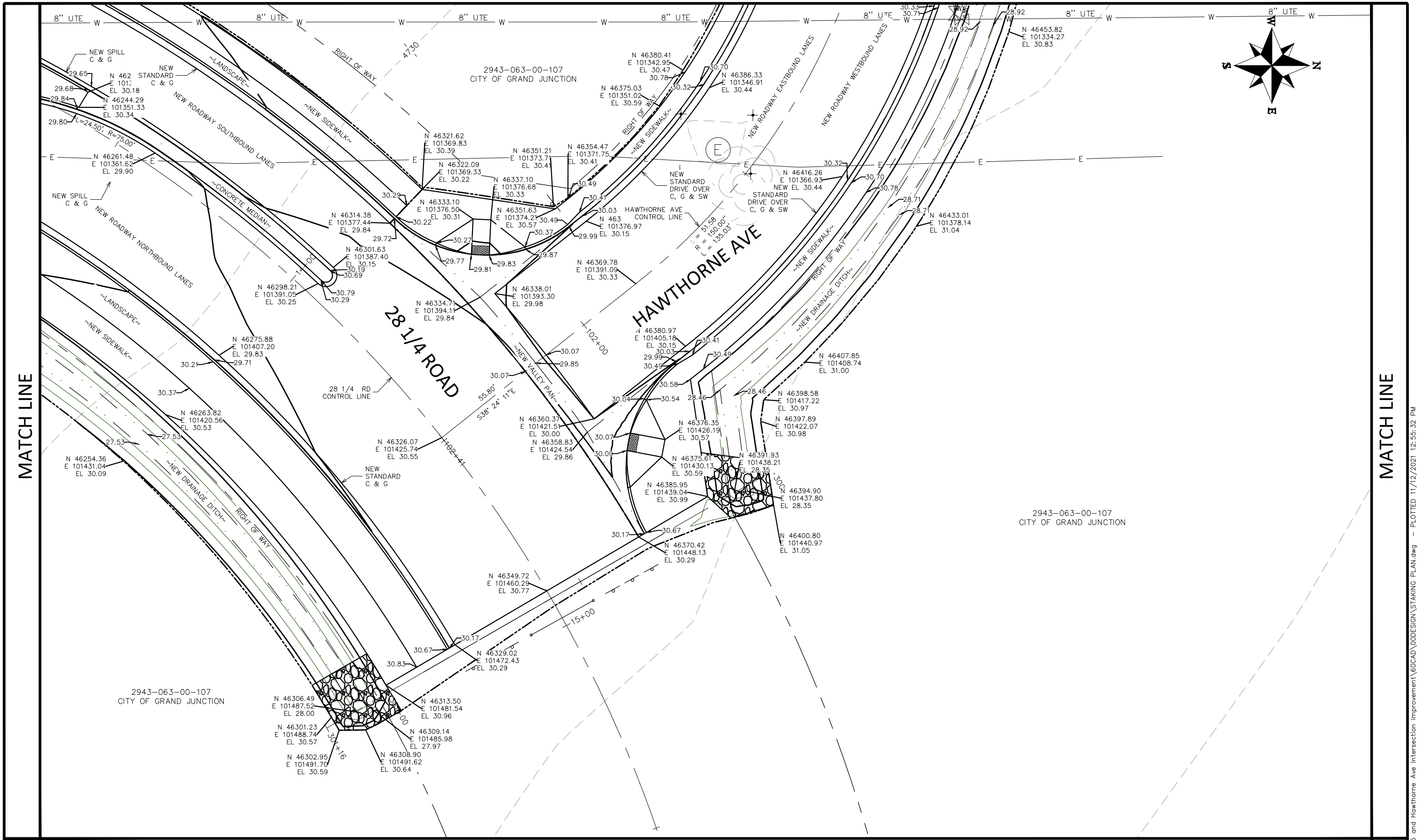
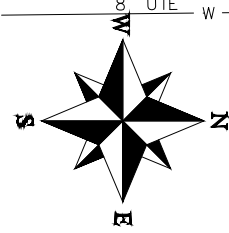
MATCH LINE

REVISION	DESCRIPTION	DATE	DRAWN BY	DATE	SCALE
REVISION Δ REV 1		- DATE	DJM	2021	
REVISION Δ REV 2		- DATE	DJM	2021	
REVISION Δ REV 3		- DATE	KAH	2021	
REVISION Δ REV 4		- DATE	KAH	2021	
		- DATE	KAH	2021	



PUBLIC WORKS
ENGINEERING DIVISION
PROJECT NO. F210201L

28 1/4 RD & HAWTHORNE AVE
STAKING PLAN
November 12, 2021

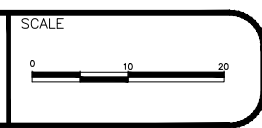


MATCH LINE

MATCH LINE

REVISION	DESCRIPTION	DATE
REVISION Δ REV 1		
REVISION Δ REV 2		
REVISION Δ REV 3		
REVISION Δ REV 4		

DRAWN BY	DJM	DATE	2021
DESIGNED BY	DJM	DATE	2021
CHECKED BY	KAH	DATE	2021
APPROVED BY	KAH	DATE	2021

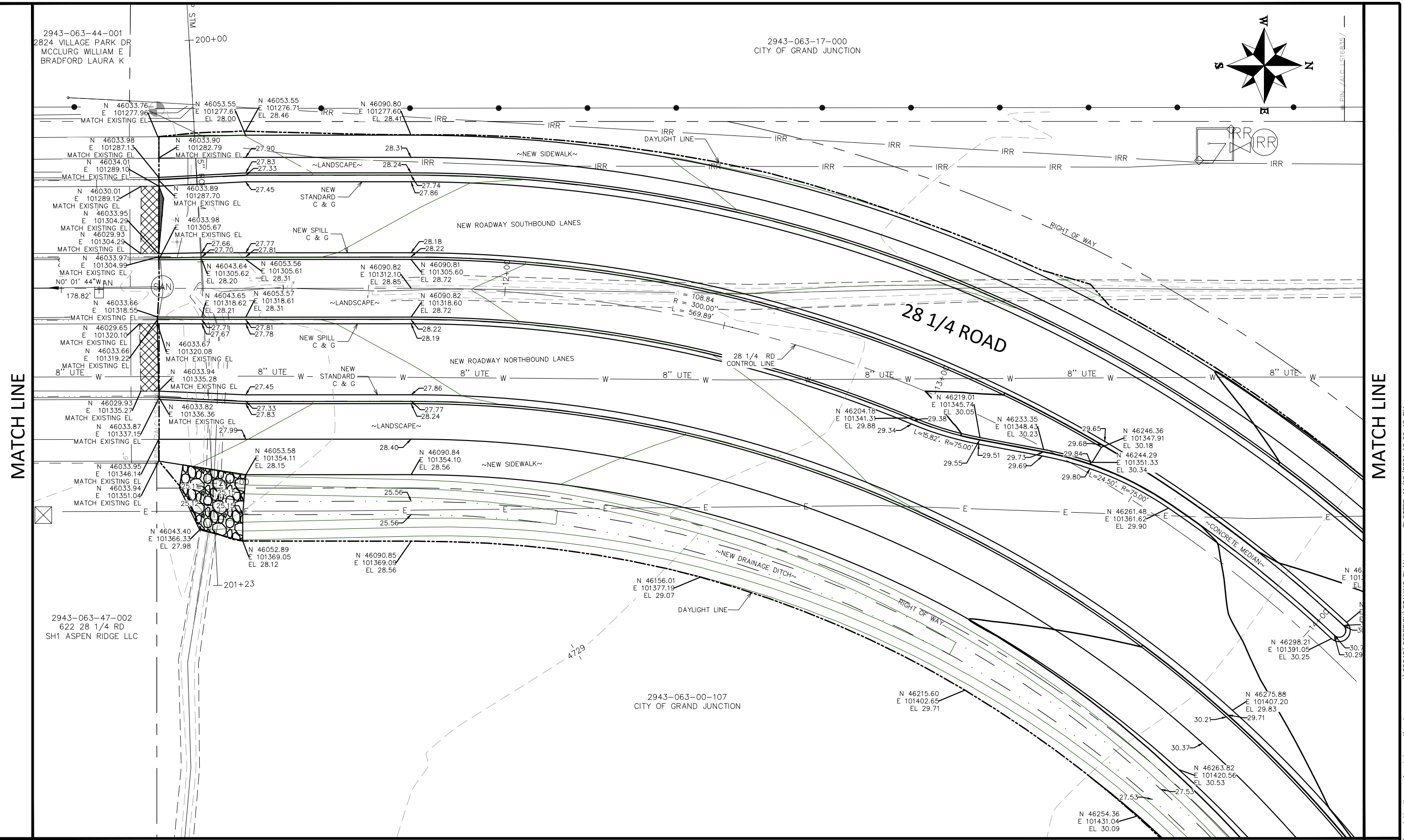
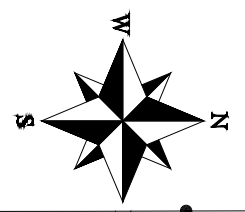


**PUBLIC WORKS
ENGINEERING DIVISION**
PROJECT NO. F210201L

**28 1/4 RD & HAWTHORNE AVE
STAKING PLAN**
November 12, 2021

2943-063-44-001
2824 VILLAGE PARK DR
MCCLURG WILLIAM E
BRADFORD LAURA K

2943-063-17-000
CITY OF GRAND JUNCTION

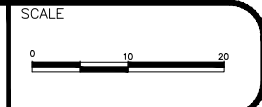


MATCH LINE

MATCH LINE

REVISION	DESCRIPTION	DATE
REVISION Δ REV 1		DATE
REVISION Δ REV 2		DATE
REVISION Δ REV 3		DATE
REVISION Δ REV 4		DATE

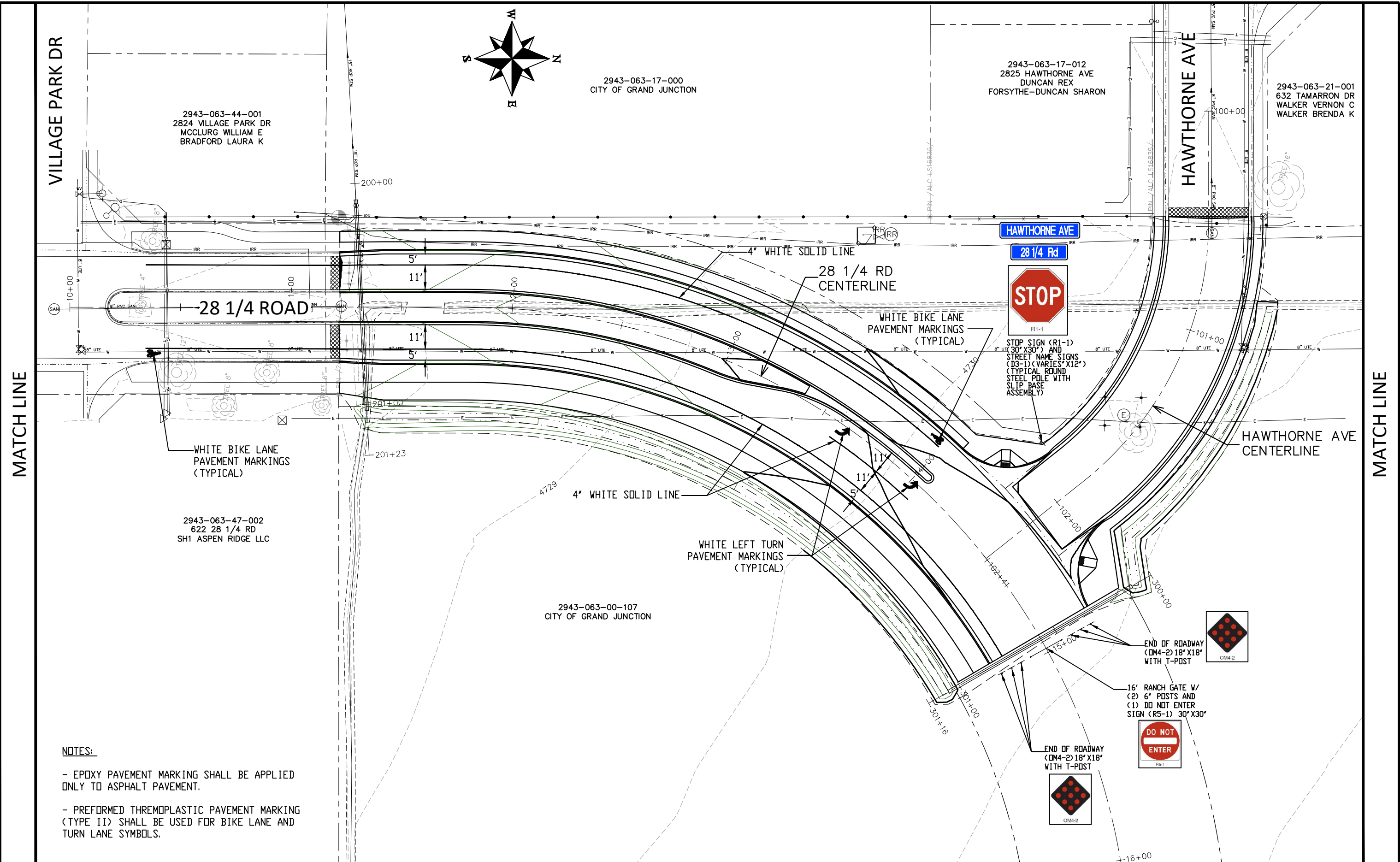
DRAWN BY	DJM	DATE	2021
DESIGNED BY	DJM	DATE	2021
CHECKED BY	KAH	DATE	2021
APPROVED BY	KAH	DATE	2021



**PUBLIC WORKS
ENGINEERING DIVISION**
PROJECT NO. F210201L

**28 1/4 RD & HAWTHORNE AVE
STAKING PLAN**
November 12, 2021

N:\landproj\2020 28.25 and Hawthorne Ave Intersection Improvement\60CAD\DDDESIGN\STAKING PLAN.dwg -- PLOTTED 11/12/2021 12:55:42 PM



2943-063-44-001
2824 VILLAGE PARK DR
MCCLURG WILLIAM E
BRADFORD LAURA K

2943-063-17-000
CITY OF GRAND JUNCTION

2943-063-17-012
2825 HAWTHORNE AVE
DUNCAN REX
FORSYTHE-DUNCAN SHARON

2943-063-21-001
632 TAMARRON DR
WALKER VERNON C
WALKER BRENDA K

2943-063-47-002
622 28 1/4 RD
SH1 ASPEN RIDGE LLC

2943-063-00-107
CITY OF GRAND JUNCTION

- NOTES:**
- EPOXY PAVEMENT MARKING SHALL BE APPLIED ONLY TO ASPHALT PAVEMENT.
 - PREFORMED THERMOPLASTIC PAVEMENT MARKING (TYPE II) SHALL BE USED FOR BIKE LANE AND TURN LANE SYMBOLS.

REVISION	DESCRIPTION	DATE	DRAWN BY	DATE	SCALE
REVISION Δ REV 1			DJM	2021	
REVISION Δ REV 2			DJM	2021	
REVISION Δ REV 3			KAH	2021	
REVISION Δ REV 4			KAH	2021	



**PUBLIC WORKS
ENGINEERING DIVISION**
PROJECT NO. F210201L

**28 1/4 RD & HAWTHORNE AVE
STRIPING AND SIGNAGE PLAN**
November 12, 2021

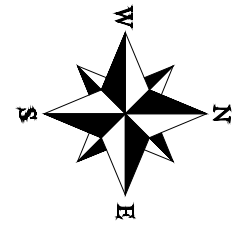
N:\landproj\2020 28.25 and Hawthorne Ave Intersection Improvement\60CAD\00DESIGN\STRIPING PLAN.dwg - PLOTTED 11/12/2021 12:55:58 PM

2943-063-21-001
632 TAMARRON DR
WALKER VERNON C
WALKER BRENDA K

2943-063-17-012
2825 HAWTHORNE AVE
DUNCAN REX
FORSYTHE-DUNCAN SHARON

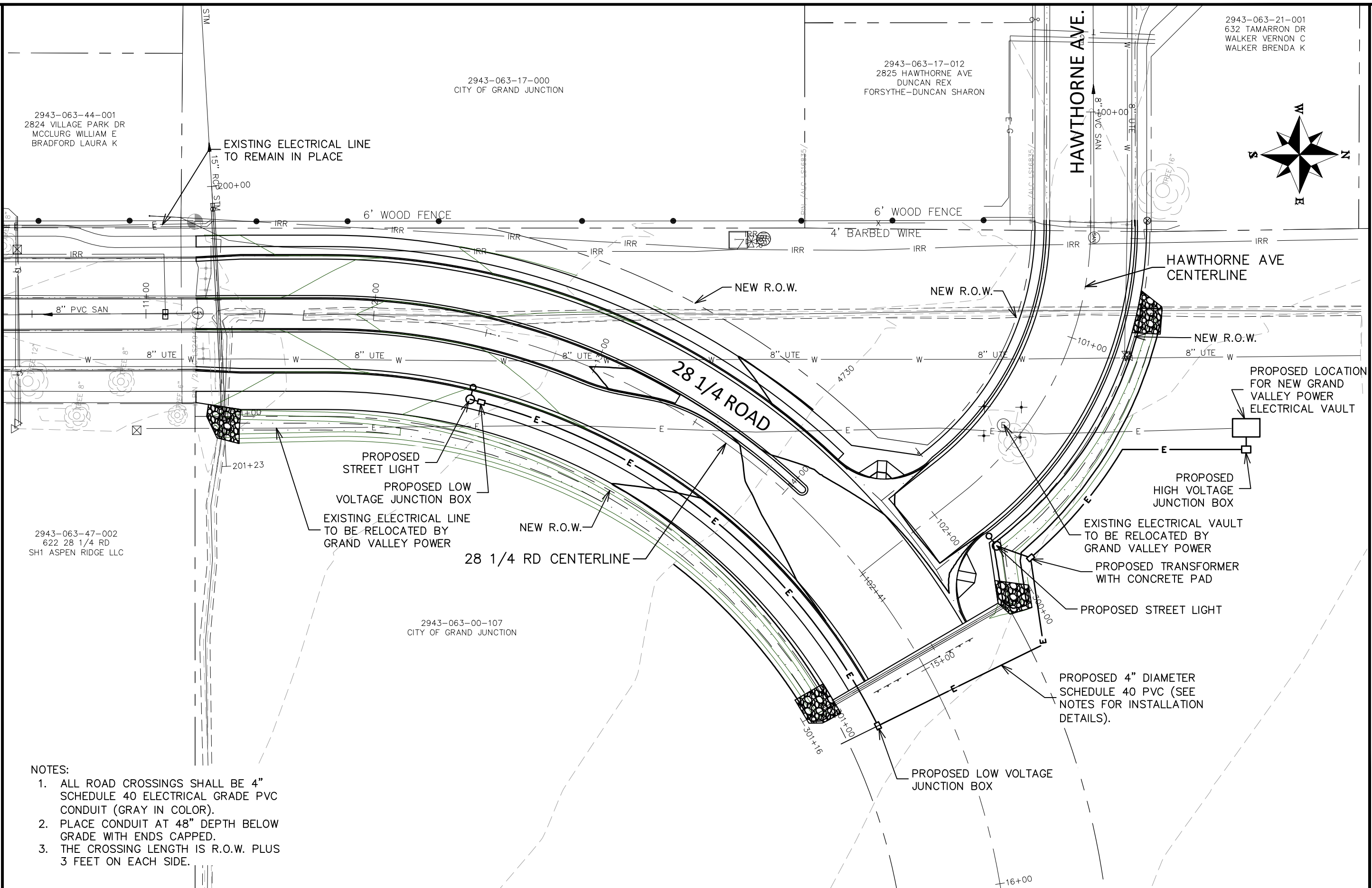
2943-063-17-000
CITY OF GRAND JUNCTION

2943-063-44-001
2824 VILLAGE PARK DR
MCCLURG WILLIAM E
BRADFORD LAURA K



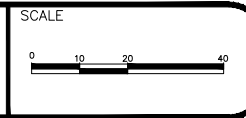
MATCH LINE

MATCH LINE



- NOTES:
1. ALL ROAD CROSSINGS SHALL BE 4" SCHEDULE 40 ELECTRICAL GRADE PVC CONDUIT (GRAY IN COLOR).
 2. PLACE CONDUIT AT 48" DEPTH BELOW GRADE WITH ENDS CAPPED.
 3. THE CROSSING LENGTH IS R.O.W. PLUS 3 FEET ON EACH SIDE.

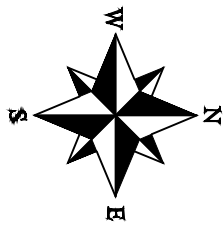
REVISION	DESCRIPTION	DATE	DRAWN BY	DATE
REVISION Δ REV 1			DJM	2021
REVISION Δ REV 2			DJM	2021
REVISION Δ REV 3			KAH	2021
REVISION Δ REV 4			KAH	2021



**PUBLIC WORKS
ENGINEERING DIVISION**
PROJECT NO. F210201L

**28 1/4 RD & HAWTHORNE AVE
ELECTRICAL PLAN**
November 12, 2021

N:\Lendproj\2020 28.25 and Hawthorne Ave Intersection Improvement\60CAD\ODESIGN\ELECTRICAL PLAN.dwg - PLOTTED 11/12/2021 12:56:13 PM



2943-063-17-000
CITY OF GRAND JUNCTION

2943-063-17-012
2825 HAWTHORNE AVE
DUNCAN REX
FORSYTHE-DUNCAN SHARON

2943-063-21-001
632 TAMARRON DR
WALKER VERNON C
WALKER BRENDA K

2943-063-44-001
2824 VILLAGE PARK DR
MCCLURG WILLIAM E
BRADFORD LAURA K

28 1/4 ROAD

28 1/4 RD
CENTERLINE

HAWTHORNE AVE

HAWTHORNE AVE
CENTERLINE

1 1/2" ROCK GRANITE
(COLOR: TAN)

(2) 4" DIA. SCHEDULE
40 PVC LANDSCAPE
CONDUITS

(2) 4" DIA. SCHEDULE
40 PVC LANDSCAPE
CONDUITS

9" RIPRAP

9" RIPRAP

9" RIPRAP

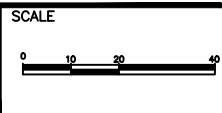
2943-063-47-002
622 28 1/4 RD
SH1 ASPEN RIDGE LLC

2943-063-00-107
CITY OF GRAND JUNCTION

MATCH LINE

MATCH LINE

REVISION	DESCRIPTION	DATE	DRAWN BY	DATE
REVISION Δ REV 1			DJM	2021
REVISION Δ REV 2			DJM	2021
REVISION Δ REV 3			KAH	2021
REVISION Δ REV 4			KAH	2021



**PUBLIC WORKS
ENGINEERING DIVISION**
PROJECT NO. F210201L

**28 1/4 RD & HAWTHORNE AVE
LANDSCAPE PLAN**
November 12, 2021

1. SITE DESCRIPTION

The Contractor shall comply with all City contractual requirements and all requirements associated with the SWMP on this project. The SWMP Administrator for Construction shall update to reflect current project site conditions.

- A. **PROJECT SITE LOCATION:** New construction of a roadway connecting 28 1/4 Rd and Hawthorne Ave. Location or address of construction office: Latitude: 39.096697, Longitude: -108.528084

PROJECT SITE DESCRIPTION: The 28 1/4 Road to Hawthorne Avenue project is a transportation capacity improvement, to provide connectivity between the two roads. 28 1/4 Road will include the continuation of a center median, curb, gutter, and landscape boulevard, and a sidewalk on both sides. Hawthorne Avenue will include curb, gutter, landscape boulevard, and a walk on both sides of the road. This project includes unclassified excavation, aggregate base course, riprap, concrete pavement, asphalt pavement, curb, gutter, walk, retaining wall, utility relocations, pedestrian lighting, landscaping, and revegetation. The improvements drain to the City of Grand Junction Storm Sewer System and a detention pond at 610 28 Road which eventually discharges to the Colorado River. Erosion log slope protection is proposed at the toe banks of 28 1/4 Road and Hawthorne Avenue. Storm Drain inlet protection is proposed ahead of storm drainpipe conveyance into the City of Grand Junction Storm Sewer System. Final landscaping will be furnished per the landscaping plans in most areas of disturbance immediately following construction efforts; other small pockets of disturbance not covered with paving or landscaping will be hydroseeded with a native seed mix.

- C. **PROPOSED SEQUENCING FOR MAJOR CONSTRUCTION ACTIVITIES:** The project will begin with installation of tracking pad, concrete washout structure, and perimeter sediment controls, clearing and grubbing, utility relocation, all needed removals, grading of the construction area, construction of 28 1/4 Road and Hawthorne Avenue, final landscaping. Disturbed areas not otherwise covered with paving, revegetation, or landscaping will receive hydroseeding.

- D. **ACRES OF DISTURBANCE:**
 1. Total area of construction site (LOC (PERMITTED AREA)): 2.11 acres
 2. Total area of proposed disturbance (LDA): 2.11 acres
 3. Total area of seeding: 1.35 acres
 4. Total area of pre-project impervious surface: 0.0 acres
 5. Total area of final impervious surface: 0.68 acres

- E. **EXISTING SOIL DATA:** The project site area is mapped as being alluvium and colluvium, undivided, (Holocene and late Pleistocene) (Qac), as well as at the immediate surrounding areas. Alluvium generally consists of silt, sand and gravels and the colluvium generally consists of sandy silt, silty to clayey sand, and sandy clay.

- F. **EXISTING VEGETATION, INCLUDING PERCENT COVER:**

Pre-Construction Date of survey: x/xx/xxxx %Density: xx%
 Description of existing vegetation: xxxxxx

Post-Construction Date of survey: %Density:
 Description of existing vegetation: **Date of Permit Closure:**

- G. **POTENTIAL POLLUTANTS SOURCES:** Sediment from ground disturbance and stockpiled soils, vehicle tracking of sediments, construction worker trash, both liquid and solid construction wastes, paints, solvents, adhesives, concrete washout water, asphalt waste, or any other material that could conceivably be dissolved in or carried by stormwater.

- H. **RECEIVING WATER:**
 1. Outfall locations: See site map
 2. Names of immediate receiving water(s) on site:
 3. Ultimate receiving water(s): Colorado River
 4. Horizontal distance to nearest ultimate receiving water from project: 3.6 miles
 5. Description of all stream crossings located within the Construction Site Boundary:

Location	Stream Name	Description Of Any Disturbed Upland Areas

I. NON-STORMWATER DISCHARGES:

Discharge Description	Location (Site Map #)	Method Statement (Location)
Dewatering*		
Concrete Wash Water (in-ground washout structure)	See site map	A Concrete Washout Structure shall be provided by the contractor
Landscape Irrigation Return Flows		
Emergency Fire Fighting		
Concrete Saw Water		

ALLOWABLE: Refer to CDPHE Low Risk Discharge Guidance Document of Uncontaminated Groundwater to Land.
<https://www.colorado.gov/pacific/sites/default/files/WQ%20LOW%20RISK%20GW.pdf>

*If ground water does not meet water quality standards for receiving water a separate CDPD Dewatering Permit shall be obtained by the Contractor from CDPHE.

2. SITE MAP COMPONENTS:

Pre-construction

- A. **PROJECT CONSTRUCTION POTENTIAL SITE BOUNDARIES** See SWMP Site Map
- B. **ALL AREAS OF GROUND SURFACE DISTURBANCE** See SWMP Site Map
- C. **AREAS OF CUT AND FILL** See SWMP Site Map
- D. **LOCATION OF ALL STRUCTURAL CONTROL MEASURES IDENTIFIED IN THE SWMP** See SWMP Site Map
- E. **LOCATION OF NON-STRUCTURAL CONTROL MEASURES AS APPLICABLE IN THE SWMP** See SWMP Site Map
- F. **STREAMS, SPRINGS, WETLANDS AND OTHER STATE WATERS, INCLUDING AREAS THAT REQUIRE PRE-EXISTING VEGETATION BE MAINTAINED WITHIN 50 FEET OF A RECEIVING WATER** See SWMP Site Map
- G. **PROTECTION OF TREES, SHRUBS AND CULTURAL RESOURCES** N/A
- H. **Flow arrows that depict stormwater flow directions on-site and runoff direction** See SWMP Site Map
- I. **AREAS USED FOR STORING AND STOCKPILING OF MATERIALS, STAGING AREAS (field trailer, fueling, etc.) WASTE ACCUMULATION and BATCH PLANTS INCLUDING MASONRY MIXING STATIONS** See Staging Area Plan
- J. **LOCATIONS OF ALL STREAM CROSSINGS LOCATED WITHIN THE CONSTRUCTION SITE BOUNDARY** See SWMP Site Map

REVISION	DESCRIPTION	DATE	DRAWN BY	DATE
REVISION Δ REV 1			DJM	2021
REVISION Δ REV 2			DJM	2021
REVISION Δ REV 3			KAH	2021
REVISION Δ REV 4			KAH	2021

NO SCALE



**PUBLIC WORKS
ENGINEERING DIVISION**
PROJECT NO. F210201L

28 1/4 RD & HAWTHORNE AVE
22 NOTES
November 12, 2021

N:\LandProj\2020 28.25 and Hawthorne Ave Intersection Improvement\60CAD\00DESIGN\SWMP.dwg - PLOTTED 11/12/2021 12:56:38 PM

3. QUALIFIED STORMWATER MANAGERS:

A. SWMP ADMINISTRATOR FOR DESIGN:

Name/Title	Contact Information	Certification #
Eric Rink, Project Manager	970-244-1585 ericr@gjcity.org	

B. SWMP Administrator for Construction: The Contractor shall designate a SWMP Administrator for Construction upon co-permittee of the permit. The SWMP Administrator for Construction shall become the operator for the SWMP and assume responsibility for all design changes to the SWMP implementation and maintenance. The SWMP Administrator for Construction shall be responsible for implementing, maintaining and revising SWMP, including the title and contact information. The activities and responsibilities of the SWMP Administrator for Construction shall address all aspects of the project's SWMP. (Update the information below for each new SWMP Administrator for Construction)

Name/Title	Contact Information (phone & email)	Certification #	Start Date	Engineer Approval
XXXXX XXXXXXXX, Owner	970-XXX-XXXX XXXconstruction@gmail.com		XX/XX/20XX	

C. EROSION CONTROL INSPECTOR: The Contractor may designate an Erosion Control Inspector. The Erosion Control Inspector shall complete duties in accordance with CDPHE and Mesa County MS4. An inspection of the site shall be performed every 7 calendar days.

Name/Title	Contact Information (phone & email)	Certification #	Start Date	Engineer Approval

4. STORMWATER MANAGEMENT CONTROLS FIRST CONSTRUCTION ACTIVITIES

THE CONTRACTOR SHALL PERFORM THE FOLLOWING:

A. POTENTIAL POLLUTANT SOURCES

Evaluate, identify, locate, and describe all potential sources of pollutants at the site in accordance with and place in the SWMP. All control measures related to potential pollutants shall be shown on the SWMP Site Map by the Contractor's SWMP Administrator for Construction.

B. OFFSITE DRAINAGE (RUN ON WATER)

1. Describe and record control measures on the SWMP Site Map that have been implemented to address off site run-on water.

C. VEHICLE TRACKING PAD/VEHICLE TRACKING CONTROL

1. Control measures shall be implemented.

D. PERIMETER CONTROL

1. Perimeter control shall be established as the first item on the SWMP to prevent the potential for pollutants leaving the construction site boundaries, entering the stormwater drainage system, or discharging to state waters.
2. Perimeter control may consist of berms, silt fence, erosion logs, existing landforms, or other control measures as approved.

5. DURING CONSTRUCTION

RESPONSIBILITIES OF THE SWMP Administrator for Construction

The SWMP is a "living document" that is continuously reviewed and modified throughout the construction phasing. During construction, the following items shall be added, updated, or amended as needed by the SWMP Administrator for Construction.

During construction, indicate how items that have not been addressed during design are being handled in construction. If items are covered in the template or other sections of the SWMP, indicate below what section the discussion takes place.

A. SPILL PREVENTION AND RESPONSE PLAN (SPCC): Prior to project startup, the awarded contractor's personnel have been trained in the following spill control procedures:

- Spill control;
- Containment, vessel, tank, and piping inspection and maintenance;
- Spill response, containment, and clean-up;
- Company policies on reporting and responding to spills.

Environmentally Sensitive Areas:

All spillways, channels, and storm drainage that lead directly or indirectly to the receiving waters and/or pose a threat to ground water are identified as being environmentally sensitive. Extra care and preventative measures will be taken to minimize the risk of contamination to these areas.

Identification of Spill Cleanup Coordinators:

Responsibility	Name/Title	Contact Information (phone)
Primary SPCC	XXXX XXXXX, Owner	970-XXX-XXXX
Secondary SPCC		
On-site Spill Responder		
City Inspector	XXX XXXX	970-XXX-XXXX
City Project Engineer	Eric Rink, Project Engineer	970-244-1585

Location of Clean-up Kits:

Type of Spill Kit	Location(s)
Large Spill Kit	
Vehicle Kit	

Notification Procedures to be used in the event of an accident:

The Qualified Stormwater Manager shall be notified immediately after a spill on the project site. For **non-hazardous** materials which may endanger health or the environment, and for spills or discharge of hazardous substance or oil (which may cause pollution of the waters of the State), the following measures shall be implemented:

- Contact the CDPHE Environmental Emergency Spill Reporting Line (1-877-518-5608) and Mesa County Stormwater Division Hotline (970-263-8201) within 24 hours of the spill event. A written notification to the CDPHE-EMP is necessary within 5 days.
- Report spill to the City Inspector and the City Project Engineer.

For spills involving **hazardous** materials the following measures shall be implemented:

- Contact the local emergency response team by dialing 911.
- Contact the CDPHE Environmental Emergency Spill Reporting Line (1-877-518-5608) and Mesa County Stormwater Division Hotline (970-263-8201) within 24 hours of the spill event. A written notification to the CDPHE-EMP is necessary within 5 days.
- Report spill to the City Inspector and the City Project Engineer.

REVISION	DESCRIPTION	DATE	DRAWN BY	DATE
REVISION Δ REV 1			DJM	2021
REVISION Δ REV 2			DJM	2021
REVISION Δ REV 3			KAH	2021
REVISION Δ REV 4			KAH	2021

NO SCALE



PUBLIC WORKS
ENGINEERING DIVISION
PROJECT NO. F210201L

28 1/4 RD & HAWTHORNE AVE
23 NOTES
November 12, 2021

B. MATERIALS HANDLING:

Quantities of Chemicals and Locations Stored on Site Chemical storage shall be at least 50 horizontal feet from the ordinary high-water line of any State water.

Material	Quantity	Staging/Storage Location(s)

Any products/chemicals that are located or stored onsite shall be properly labeled as to the contents of the material. The Safety Data Sheets (SDS) for all products/chemicals utilized onsite can be found in a notebook at the project trailer.

All chemicals and stockpiled materials stored on site shall be stored within berms or other secondary containment devices to prevent leaks and spills from contacting stormwater runoff.

- C. **STOCKPILE MANAGEMENT:** Shall be done in accordance with subsection 107.25 and 208.07
- D. **CONCRETE WASHOUT:** Concrete wash out water or waste from field laboratories and paving equipment shall be contained in accordance with subsection 208.05.
- E. **SAW CUTTING:** Shall be done in accordance with subsection 107.25, 208.04, 208.05
- D. **VEHICLE TRACKING:** Vehicle tracking pad(s) shall be constructed to the minimum dimensions shown in the contract prior to any earth disturbance of the area in accordance with control measures to be implemented in accordance with subsection 208.05.
- E. **STREET SWEEPING:** Street sweeping to be completed if observed tracking of materials onto impervious pavements in accordance with subsection 208.04.
- F. **PERIMETER SEDIMENT CONTROL:** Erosion logs shall be installed as shown on the SWMP Site Map. Erosion logs shall be embedded 2 inches into the soil and staked in accordance with subsection 208.05.
- G. **CONTAMINATED SOILS:** This work consists of protection of the environment, persons, and property from contaminants that may be encountered on the Project. If suspected soil and groundwater contaminants are encountered, the contractor shall follow notification, monitoring, testing, hauling, and disposal procedures in accordance with subsection 205.
- H. **VEHICLE/EQUIPMENT MAINTENANCE:** Equipment fueling and servicing shall occur only within approved designated areas. The Contractor shall inspect equipment, vehicles, and repair areas daily to ensure petroleum, oils, and lubricants (POL) are not leaking onto the soil or pavement. Control, cleanup, and removal of by-products resulting from POL leaks shall be completed in accordance with subsection 208.06.
- I. **ASPHALT WASTE:** Batching of asphalt shall not be allowed on-site and recycled asphalt shall not be used for vehicle tracking pads. Removed asphalt shall be disposed of off-site and may only be recycled on-site in accordance with subsections 202.09 & 203.03 if approved by the Engineer.

WASTE MANAGEMENT: Routine maintenance of dumpsters, portable toilets, and other non-industrial wastes shall be performed on a regular basis as necessary to prevent such wastes from discharging to waterways.

6. INSPECTIONS

- A. Inspections shall be performed every 7 calendar days in accordance with subsection 208.03(c).

7. CONTROL MEASURE MAINTENANCE

- A. Maintenance shall be in accordance with subsection 208.04(f).

8. RECORD KEEPING

- A. Records shall be kept in accordance with subsection 208.03(d).

9. INTERIM, PERMANENT STABILIZATION and LONG-TERM STORMWATER MANAGEMENT

The Contractor shall comply with all interim stabilization and permanent stabilization requirements in accordance with subsection 208.04(e).

A. SEEDING PLAN

Seeding will be required for an estimated 1.35 acres of disturbed area within the construction limits which are not surfaced, permanently landscaped, or revegetated. The following types and rates shall be used:

COMMON NAME	BOTANICAL NAME	LBS. PLS PER ACRE
Western wheatgrass		7.5
Bluebunch wheatgrass		2.3
Indian ricegrass		1.0
Thickspike wheatgrass		2.3
Slender wheatgrass		9.5
Red Mexican Hat		0.5
Blanket flower		1.5
Western yarrow		0.5
TOTAL		25.00

- B. **SEEDING APPLICATION:** Hydroseed all disturbed areas at the construction site per subsection 212. Soil compaction shall be minimized for areas where permanent stabilization will be achieved through vegetative cover.

C. LONG TERM STORMWATER MANAGEMENT

In addition to the seeding plan noted in item 9.A, a detention pond will be constructed control pollutants in stormwater discharges that will occur after construction operations are completed.

10. PRIOR TO PROJECT FINAL ACCEPTANCE

- A. Partial Acceptance shall be in accordance with subsection 107.25 (d), 208.10 and 214.04. At the Partial Acceptance of the project, it shall be determined by the SWMP Administrator for Construction and the Engineer which temporary control measures shall remain until 70% revegetation is established or which shall be removed.
- B. At the end of the project, all ditch checks shall either consist of temporary erosion logs (or equivalent) or permanent riprap.
- C. All storm drains shall be cleaned prior to the Final Acceptance of the project.

REVISION	DESCRIPTION	DATE
REVISION Δ REV 1		
REVISION Δ REV 2		
REVISION Δ REV 3		
REVISION Δ REV 4		

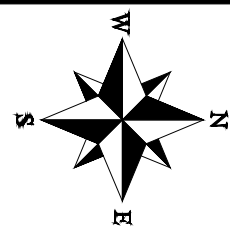
DRAWN BY	DJM	DATE	2021
DESIGNED BY	DJM	DATE	2021
CHECKED BY	KAH	DATE	2021
APPROVED BY	KAH	DATE	2021

NO SCALE



**PUBLIC WORKS
ENGINEERING DIVISION**
PROJECT NO. F210201L

28 1/4 RD & HAWTHORNE AVE
24 NOTES
November 12, 2021



2943-063-17-000
CITY OF GRAND JUNCTION

STORM DRAIN INLET PROTECTION
TYPE II PER CDOT M STANDARD
PLAN M-208-1 SHT 5 OF 11
(NOT SHOWN, AT EXISTING INLETS
AT INTERSECTION OF HAWTHORNE
AVE. AND E PAGOSA DR.)

STORM DRAIN INLET PROTECTION
TYPE II PER CDOT M STANDARD
PLAN M-208-1 SHT 5 OF 11
(NOT SHOWN, AT EXISTING INLET
VILLAGE PARK DR. AND MEADE
CT.)

2943-063-44-001
2824 VILLAGE PARK DR
MCCLURG WILLIAM E
BRADFORD LAURA K

2943-063-17-012
2825 HAWTHORNE AVE
DUNCAN REX
FORSYTHE-DUNCAN SHARON

AGGREGATE BAG PER CDOT M
STANDARD PLAN M-208-1 SHT
4 OF 11 (1 EA)

2943-063-21-001
632 TAMARRON DR
WALKER VERNON C
WALKER BRENDA K

STA: 200+10.00
OFFSET: 0.00
PR. STORM MH #1
N 46041.38
E 101266.20

EROSION LOG TOE OF SLOPE
PROTECTION PER CDOT M
STANDARD PLAN M-208-1
SHT 3 OF 11

6' WOOD FENCE

6' WOOD FENCE

AGGREGATE BAG PER CDOT M
STANDARD PLAN M-208-1 SHT
4 OF 11 (1 EA)

PRE-FABRICATED VEHICLE
TRACKING PAD

EROSION LOG DRAINAGE DITCH
APPLICATION PER CDOT M
STANDARD PLAN M-208-1
SHT 6 OF 11

28 1/4 ROAD

AGGREGATE BAG PER CDOT M
STANDARD PLAN M-208-1 SHT
4 OF 11 (1 EA)

STORM DRAIN INLET PROTECTION
TYPE II PER CDOT M STANDARD
PLAN M-208-1 SHT 5 OF 11
(NOT SHOWN, AT EXISTING INLET
ABOUT 300-FT. SOUTH OF
INTERSECTION OF 28 1/4 RD
AND VILLAGE PARK DR.)

2943-063-47-002
622 28 1/4 RD
SH1 ASPEN RIDGE LLC

EROSION LOG TOE OF SLOPE
PROTECTION PER CDOT M
STANDARD PLAN M-208-1
SHT 3 OF 11

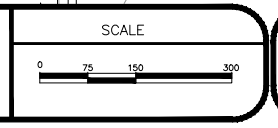
EROSION CONTROL BLANKET
TO BE INSTALLED ON THE
BOTTOM OF DITCH

2943-063-00-107
CITY OF GRAND JUNCTION

EROSION CONTROL BLANKET
TO BE INSTALLED ON THE
BOTTOM OF DITCH

PRE-FABRICATED
CONCRETE WASHOUT
STRUCTURE (TYPE 1)

REVISION	DESCRIPTION	DATE	DRAWN BY	DATE
REVISION Δ REV 1			DJM	2021
REVISION Δ REV 2			DJM	2021
REVISION Δ REV 3			KAH	2021
REVISION Δ REV 4			KAH	2021



**PUBLIC WORKS
ENGINEERING DIVISION**
PROJECT NO. F210201L

**28 1/4 RD & HAWTHORNE AVE
25-SWMP**
November 12, 2021

N:\landproj\2020 28.25 and Hawthorne Ave Intersection Improvement\60CAD\00DESIGN\SWMP.dwg - PLOTTED 11/12/2021 12:56:57 PM