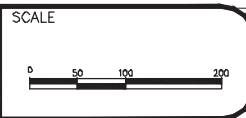


REVISION	DESCRIPTION	DATE	DRAWN BY	DATE
△			JCS	2019
△			JCS	2019
△			BH	2019
△			TCP	2019

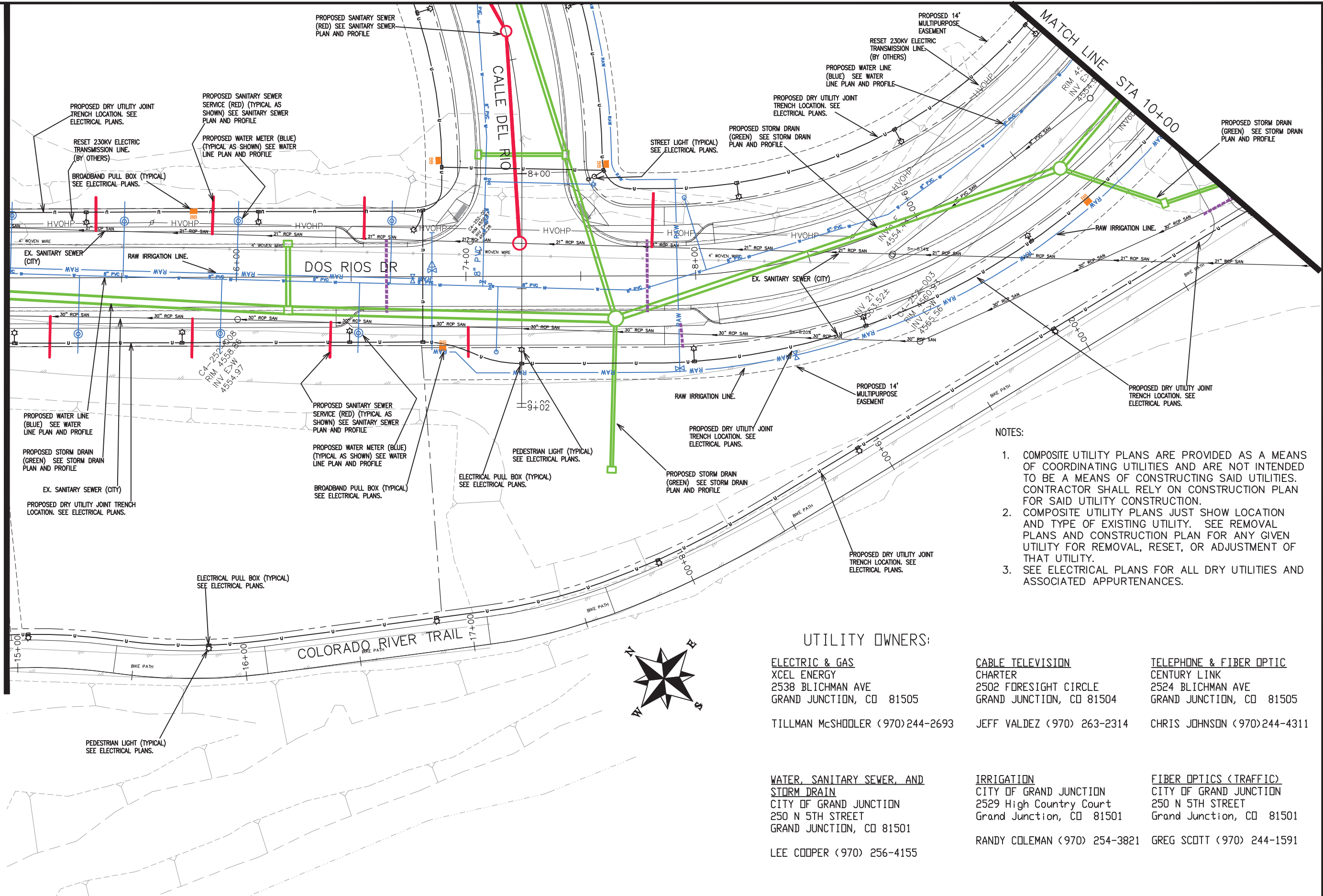


**PUBLIC WORKS
ENGINEERING DIVISION**

**THE RIVERFRONT AT DOS RIOS
COMPOSITE UTILITY PLAN SHEET INDEX - 1
June 18, 2020**

MATCH LINE STA 5+00

MATCH LINE STA 10+00



NOTES:

1. COMPOSITE UTILITY PLANS ARE PROVIDED AS A MEANS OF COORDINATING UTILITIES AND ARE NOT INTENDED TO BE A MEANS OF CONSTRUCTING SAID UTILITIES. CONTRACTOR SHALL RELY ON CONSTRUCTION PLAN FOR SAID UTILITY CONSTRUCTION.
2. COMPOSITE UTILITY PLANS JUST SHOW LOCATION AND TYPE OF EXISTING UTILITY. SEE REMOVAL PLANS AND CONSTRUCTION PLAN FOR ANY GIVEN UTILITY FOR REMOVAL, RESET, OR ADJUSTMENT OF THAT UTILITY.
3. SEE ELECTRICAL PLANS FOR ALL DRY UTILITIES AND ASSOCIATED APPURTENANCES.

UTILITY OWNERS:

ELECTRIC & GAS XCEL ENERGY 2538 BLICHMAN AVE GRAND JUNCTION, CO 81505 TILLMAN McSHOOLER (970)244-2693	CABLE TELEVISION CHARTER 2502 FORESIGHT CIRCLE GRAND JUNCTION, CO 81504 JEFF VALDEZ (970) 263-2314	TELEPHONE & FIBER OPTIC CENTURY LINK 2524 BLICHMAN AVE GRAND JUNCTION, CO 81505 CHRIS JOHNSON (970)244-4311
WATER, SANITARY SEWER, AND STORM DRAIN CITY OF GRAND JUNCTION 250 N 5TH STREET GRAND JUNCTION, CO 81501 LEE COOPER (970) 256-4155	IRRIGATION CITY OF GRAND JUNCTION 2529 High Country Court Grand Junction, CO 81501 RANDY COLEMAN (970) 254-3821	FIBER OPTICS (TRAFFIC) CITY OF GRAND JUNCTION 250 N 5TH STREET Grand Junction, CO 81501 GREG SCOTT (970) 244-1591



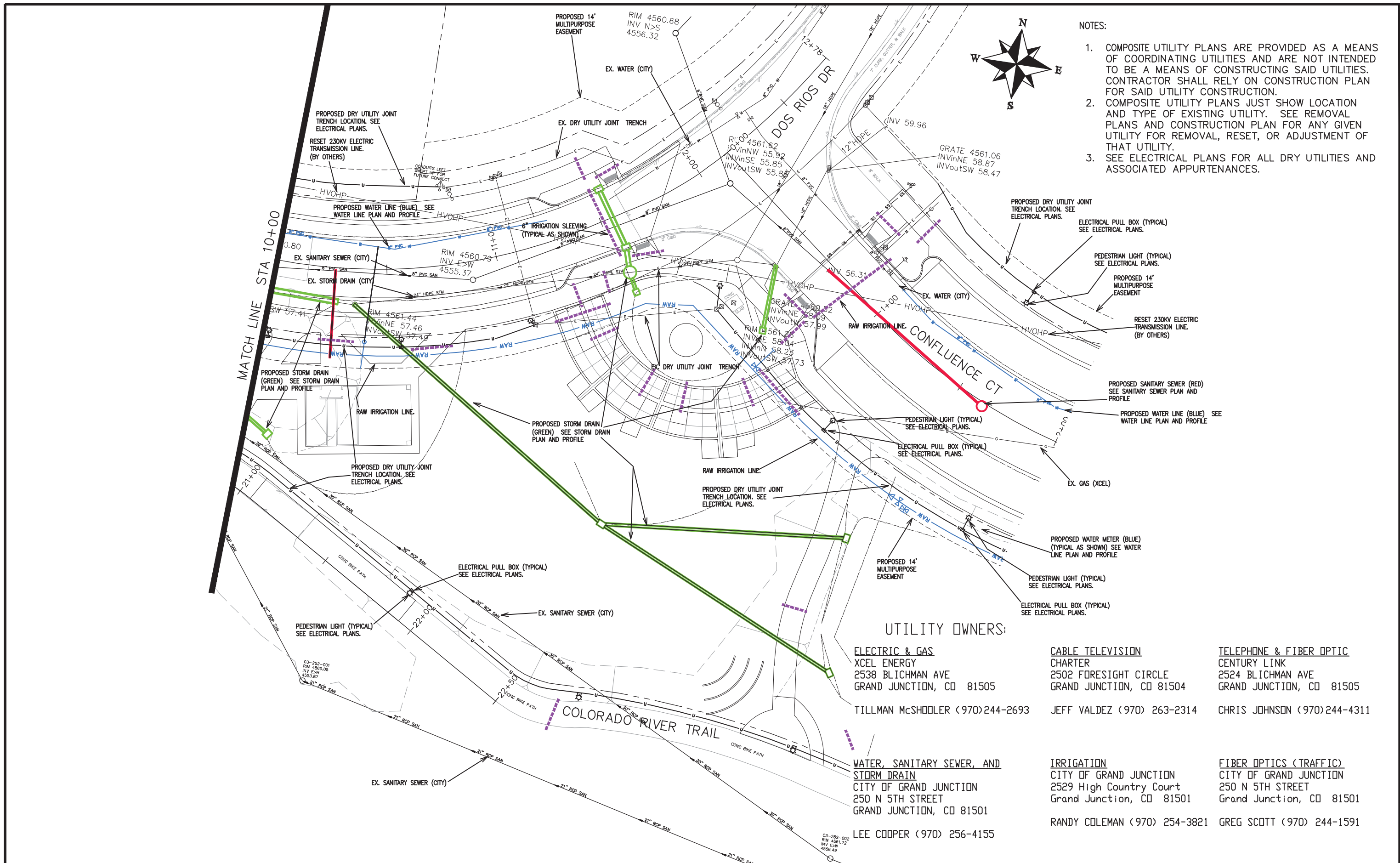
REVISION	DESCRIPTION	DATE	DRAWN BY	DATE	SCALES:
REVISION			JCS	2019	PLAN & PROFILE
REVISION			JCS	2019	0 10 HORIZONTAL 20 40
REVISION			BH	2019	0 NA VERTICAL NA
REVISION			JCP	2019	



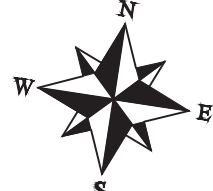
**PUBLIC WORKS
ENGINEERING DIVISION**

**THE RIVERFRONT AT DOS RIOS
COMPOSITE UTILITY PLAN - C-6
June 19, 2020**

N:\Landproj\2019 Riverfront at Dos Rios\dwg\00 design\Composite Utility Plan.dwg, 6/19/2020 7:53:56 AM



- NOTES:
1. COMPOSITE UTILITY PLANS ARE PROVIDED AS A MEANS OF COORDINATING UTILITIES AND ARE NOT INTENDED TO BE A MEANS OF CONSTRUCTING SAID UTILITIES. CONTRACTOR SHALL RELY ON CONSTRUCTION PLAN FOR SAID UTILITY CONSTRUCTION.
 2. COMPOSITE UTILITY PLANS JUST SHOW LOCATION AND TYPE OF EXISTING UTILITY. SEE REMOVAL PLANS AND CONSTRUCTION PLAN FOR ANY GIVEN UTILITY FOR REMOVAL, RESET, OR ADJUSTMENT OF THAT UTILITY.
 3. SEE ELECTRICAL PLANS FOR ALL DRY UTILITIES AND ASSOCIATED APPURTENANCES.



UTILITY OWNERS:

- | | | |
|--|--|--|
| ELECTRIC & GAS
XCEL ENERGY
2538 Blichman Ave
Grand Junction, CO 81505
TILLMAN McSHODLER (970) 244-2693 | CABLE TELEVISION
CHARTER
2502 FORESIGHT CIRCLE
Grand Junction, CO 81504
JEFF VALDEZ (970) 263-2314 | TELEPHONE & FIBER OPTIC
CENTURY LINK
2524 Blichman Ave
Grand Junction, CO 81505
CHRIS JOHNSON (970) 244-4311 |
| WATER, SANITARY SEWER, AND STORM DRAIN
CITY OF GRAND JUNCTION
250 N 5TH STREET
Grand Junction, CO 81501
LEE COOPER (970) 256-4155 | IRRIGATION
CITY OF GRAND JUNCTION
2529 High Country Court
Grand Junction, CO 81501
RANDY COLEMAN (970) 254-3821 | FIBER OPTICS (TRAFFIC)
CITY OF GRAND JUNCTION
250 N 5TH STREET
Grand Junction, CO 81501
GREG SCOTT (970) 244-1591 |

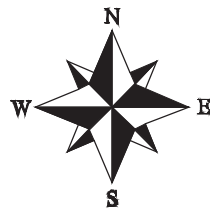
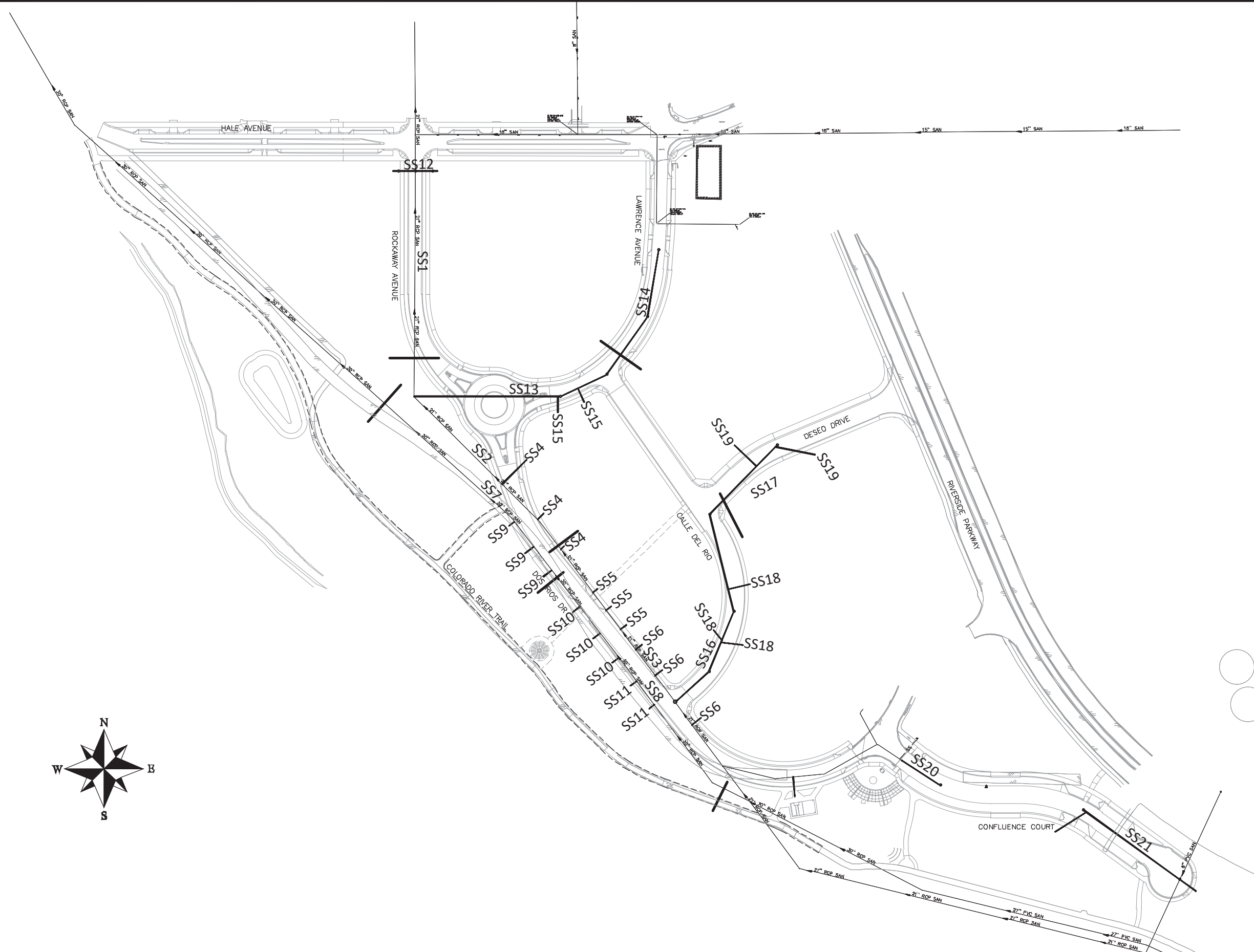
REVISION	DESCRIPTION	DATE	DRAWN BY	DATE	SCALES:
REVISION			JCS	2019	PLAN & PROFILE
REVISION			JCS	2019	0 10 20 40 HORIZONTAL
REVISION			BH	2019	0 NA 1/4" = 1'-0" VERTICAL
REVISION			TCP	2019	



**PUBLIC WORKS
ENGINEERING DIVISION**

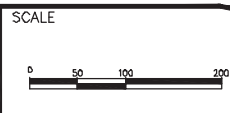
**THE RIVERFRONT AT DOS RIOS
COMPOSITE UTILITY PLAN - C-7
June 19, 2020**

N:\Landproj\2019 Riverfront at Dos Rios\dwg\00 design\Composite Utility Plan.dwg, 6/19/2020 7:54:09 AM



REVISION	DESCRIPTION	DATE
△		
△		
△		
△		

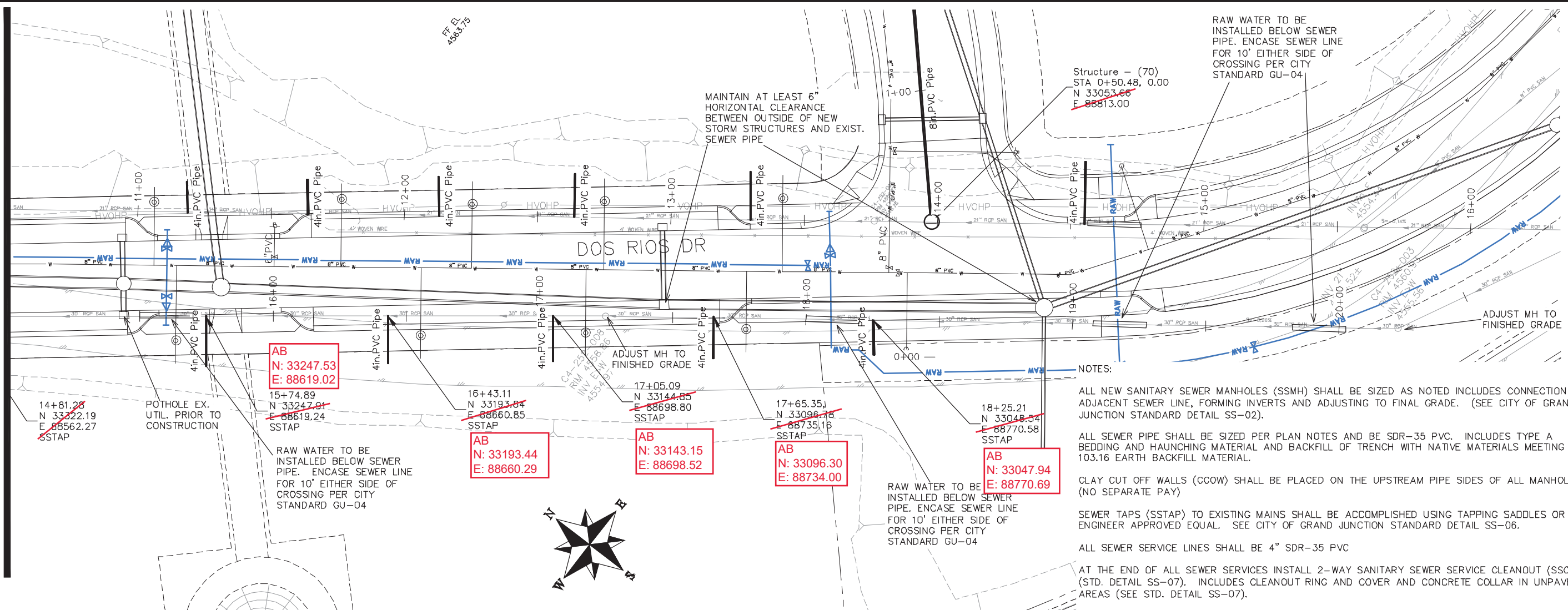
DRAWN BY	JCS	DATE	2019
DESIGNED BY	JCS	DATE	2019
CHECKED BY	BH	DATE	2019
APPROVED BY	TCP	DATE	2019



PUBLIC WORKS
ENGINEERING DIVISION

THE RIVERFRONT AT DOS RIOS
SANITARY SEWER SHEET INDEX
June 18, 2020

MATCH LINE STA 15+00



RAW WATER TO BE INSTALLED BELOW SEWER PIPE. ENCASE SEWER LINE FOR 10' EITHER SIDE OF CROSSING PER CITY STANDARD GU-04

MAINTAIN AT LEAST 6" HORIZONTAL CLEARANCE BETWEEN OUTSIDE OF NEW STORM STRUCTURES AND EXIST. SEWER PIPE

Structure - (70)
STA 0+50.48, 0.00
N 33053.66
E 88813.00

AB
N: 33247.53
E: 88619.02

AB
N: 33193.44
E: 88660.29

AB
N: 33143.15
E: 88698.52

AB
N: 33096.30
E: 88734.00

AB
N: 33047.94
E: 88770.69

NOTES:

ALL NEW SANITARY SEWER MANHOLES (SSMH) SHALL BE SIZED AS NOTED INCLUDES CONNECTION OF ADJACENT SEWER LINE, FORMING INVERTS AND ADJUSTING TO FINAL GRADE. (SEE CITY OF GRAND JUNCTION STANDARD DETAIL SS-02).

ALL SEWER PIPE SHALL BE SIZED PER PLAN NOTES AND BE SDR-35 PVC. INCLUDES TYPE A BEDDING AND HAUNCHING MATERIAL AND BACKFILL OF TRENCH WITH NATIVE MATERIALS MEETING 103.16 EARTH BACKFILL MATERIAL.

CLAY CUT OFF WALLS (CCOW) SHALL BE PLACED ON THE UPSTREAM PIPE SIDES OF ALL MANHOLES. (NO SEPARATE PAY)

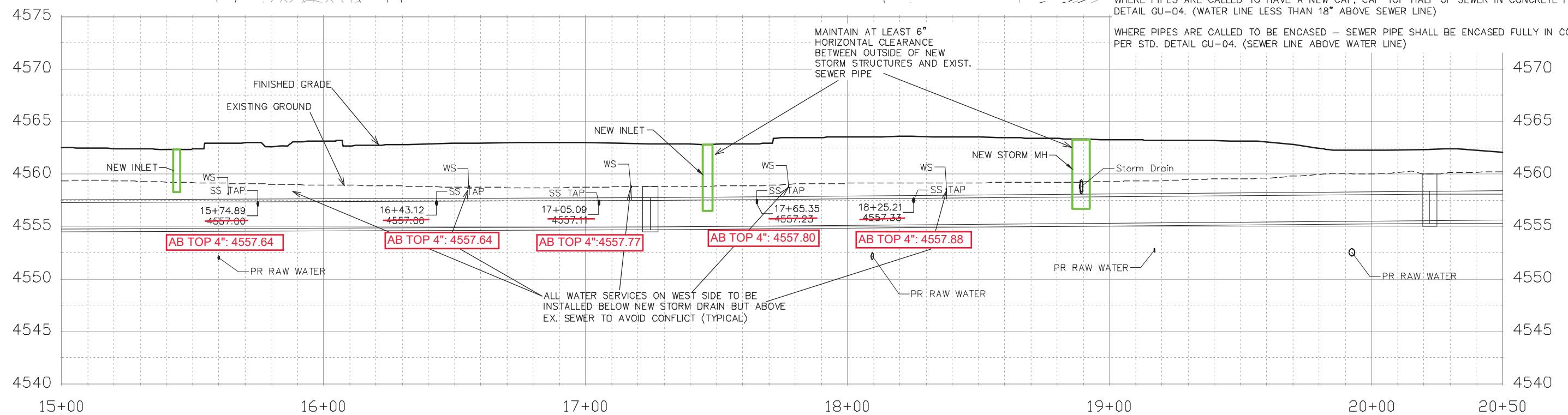
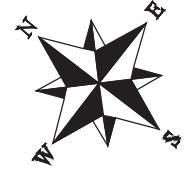
SEWER TAPS (SSTAP) TO EXISTING MAINS SHALL BE ACCOMPLISHED USING TAPPING SADDLES OR ENGINEER APPROVED EQUAL. SEE CITY OF GRAND JUNCTION STANDARD DETAIL SS-06.

ALL SEWER SERVICE LINES SHALL BE 4" SDR-35 PVC

AT THE END OF ALL SEWER SERVICES INSTALL 2-WAY SANITARY SEWER SERVICE CLEANOUT (SSCO) (STD. DETAIL SS-07). INCLUDES CLEANOUT RING AND COVER AND CONCRETE COLLAR IN UNPAVED AREAS (SEE STD. DETAIL SS-07).

WHERE PIPES ARE CALLED TO HAVE A NEW CAP, CAP TOP HALF OF SEWER IN CONCRETE PER STD. DETAIL GU-04. (WATER LINE LESS THAN 18" ABOVE SEWER LINE)

WHERE PIPES ARE CALLED TO BE ENCASED - SEWER PIPE SHALL BE ENCASED FULLY IN CONCRETE PER STD. DETAIL GU-04. (SEWER LINE ABOVE WATER LINE)



REVISION	DESCRIPTION	DATE	DRAWN BY	DATE
△			JCS	2019
△			JCS	2019
△			BH	2019
△			TOP	2019

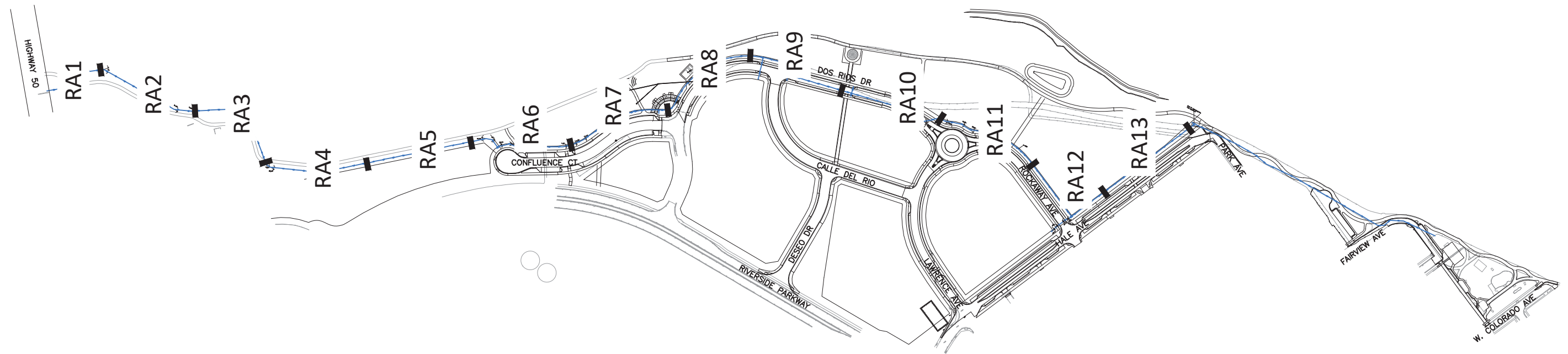
SCALES:	
0	40
0	10



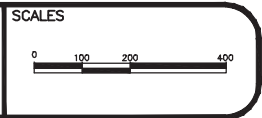
PUBLIC WORKS
ENGINEERING DIVISION

THE RIVERFRONT AT DOS RIOS
SANITARY SEWER PH 2 - SSB
June 18, 2020

N:\Landproj\2019 Riverfront at Dos Rios\dwg\00 design\Sanitary Sewer Ph 2.dwg, 6/18/2020 1:32:22 PM



REVISION	DESCRIPTION	DATE	DRAWN BY	DATE
△			JCS	2020
△			BH/JCS	2020
△			BH	2020
△			ICP	2020

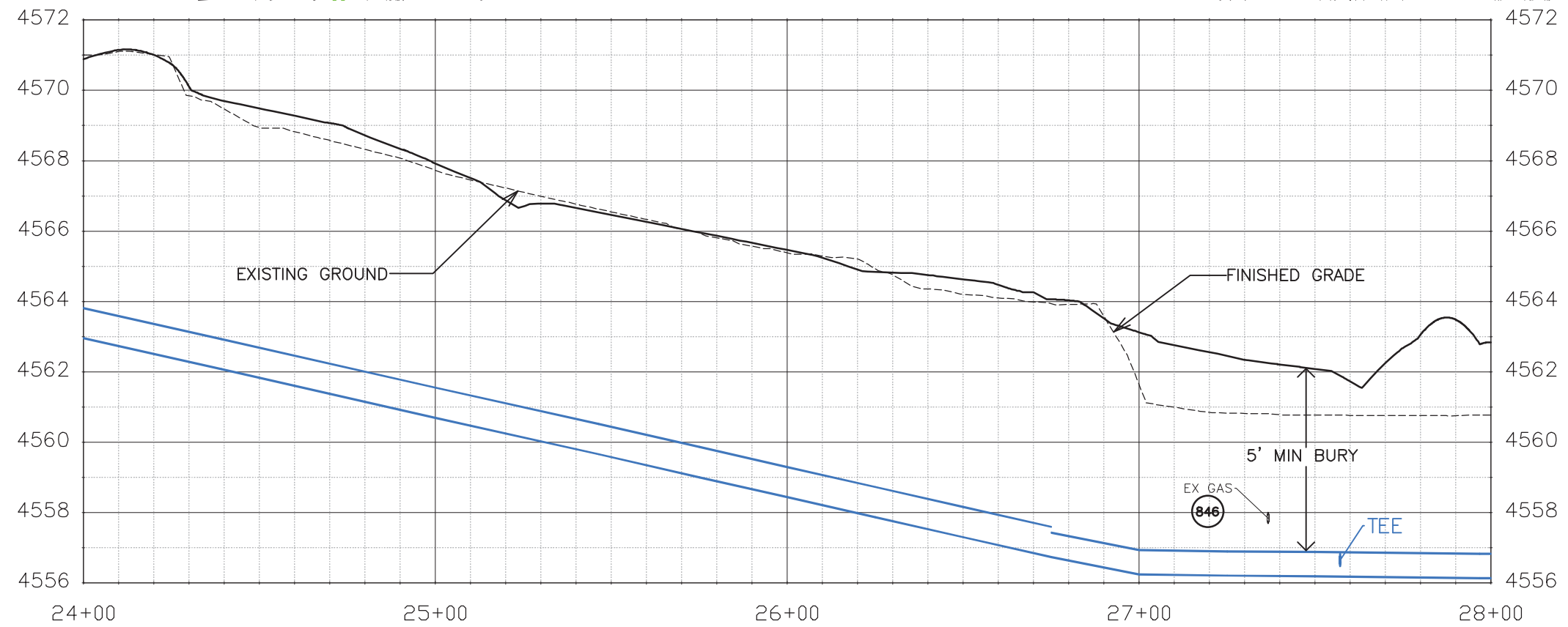
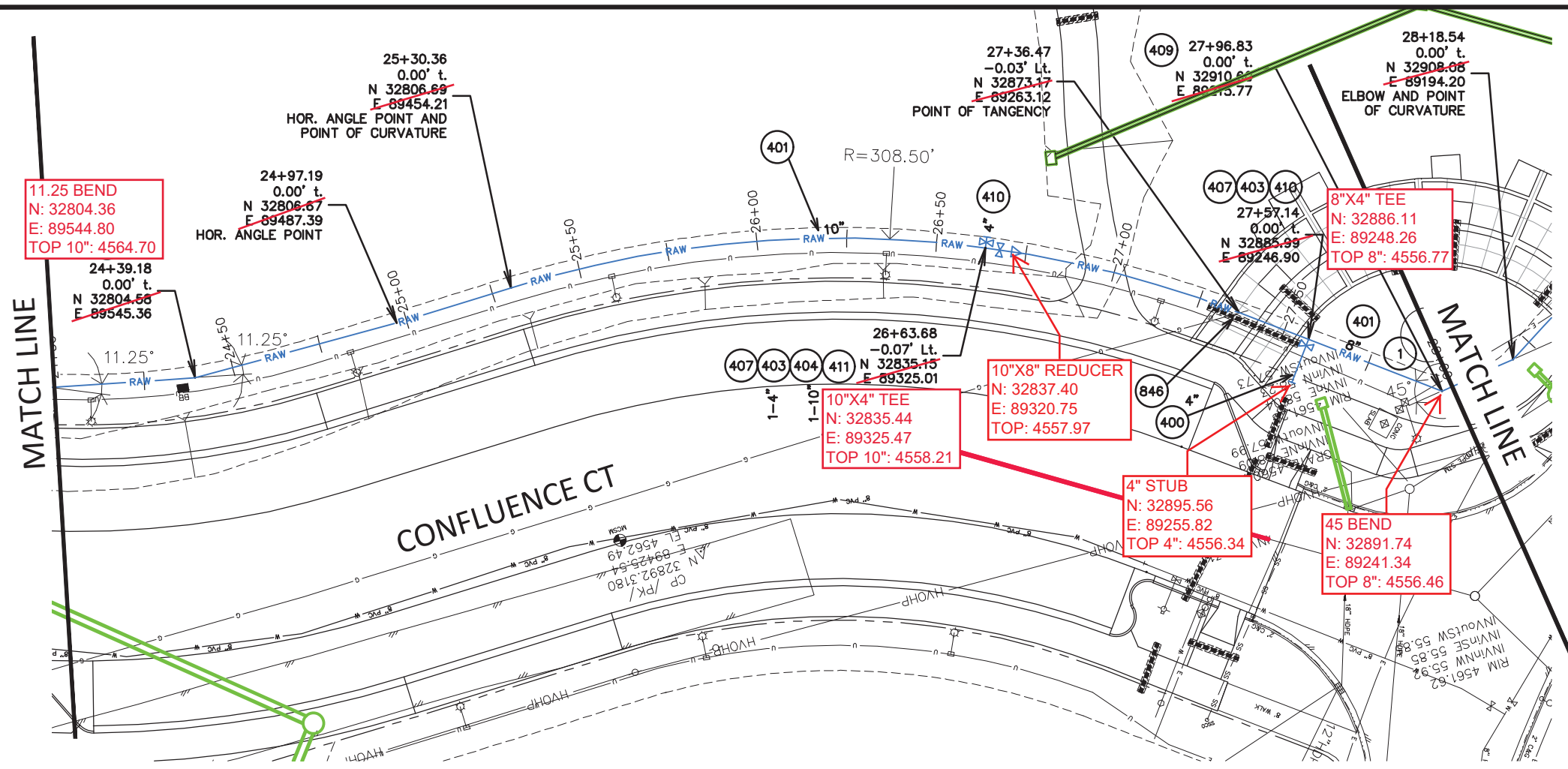
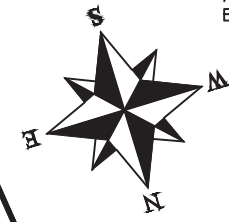


PUBLIC WORKS
ENGINEERING DIVISION

THE RIVERFRONT AT DOS RIOS
RAW WATER LINE – KEYMAP
June 19, 2020

CONSTRUCTION NOTES

- 1) 202 - REMOVAL OF ASPHALT MAT. CUT AND REMOVE ASPHALT AS NEEDED FOR PIPE INSTALLATION.
- 400 102.7/108.2 - WATER MAIN PIPE (C-900 PVC) (SIZE AS SHOWN). INCLUDES TYPE A BEDDING AND HAUNCHING MATERIAL AND BACKFILL OF TRENCH WITH NATIVE MATERIALS MEETING 103.16 EARTH BACKFILL MATERIAL.
- 401 102.7/108.2 - WATER MAIN PIPE (DR-25 PVC) (SIZE AS SHOWN). INCLUDES TYPE A BEDDING AND HAUNCHING MATERIAL AND BACKFILL OF TRENCH WITH NATIVE MATERIALS MEETING 103.16 EARTH BACKFILL MATERIAL.
- 403 102.8b/108.3 - GATE VALVE. (SIZE AS SHOWN)
- 407 102.8/108.3 - TEE (SIZE AS SHOWN).
- 409 102.8/108.3 - ELBOW (SIZE AND ANGLE AS SHOWN)
- 410 102.8/108.3 - END CAP / PLUG (SIZE AS SHOWN).
- 411 102.8/108.3 - REDUCER (SIZE AS SHOWN).
- 846 POT HOLE EXISTING UTILITY AHEAD OF CONSTRUCTION. TRANSITION WATER PIPE AS NEEDED TO MAINTAIN 18" CLEARANCE MINIMUM ABOVE SEWER PIPES AND 6" CLEARANCE MINIMUM ABOVE OR BELOW OTHER UTILITY LINES.



Know what's below.
Call before you dig.

NOTE: NOTIFY AFFECTED UTILITY VENDOR 48 HOURS PRIOR TO EXCAVATIONS THAT WILL EXPOSE UTILITY LINES. THE UTILITY PLAN WILL HAVE A LISTING OF UTILITY VENDORS AND TELEPHONE NUMBERS.

REVISION	DESCRIPTION	DATE	DRAWN BY	DATE	SCALES:
REVISION			JCS	2020	PLAN & PROFILE
REVISION			BH/JCS	2020	HORIZONTAL 1"=40'
REVISION			BH	2020	VERTICAL 1"=4'
REVISION			ICP	2020	



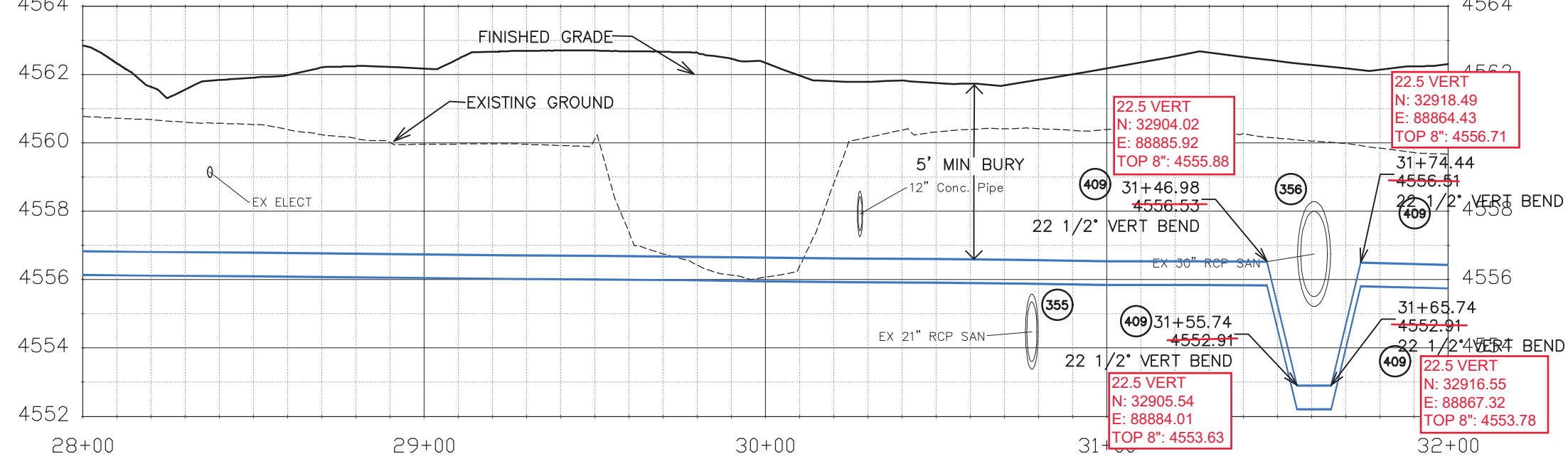
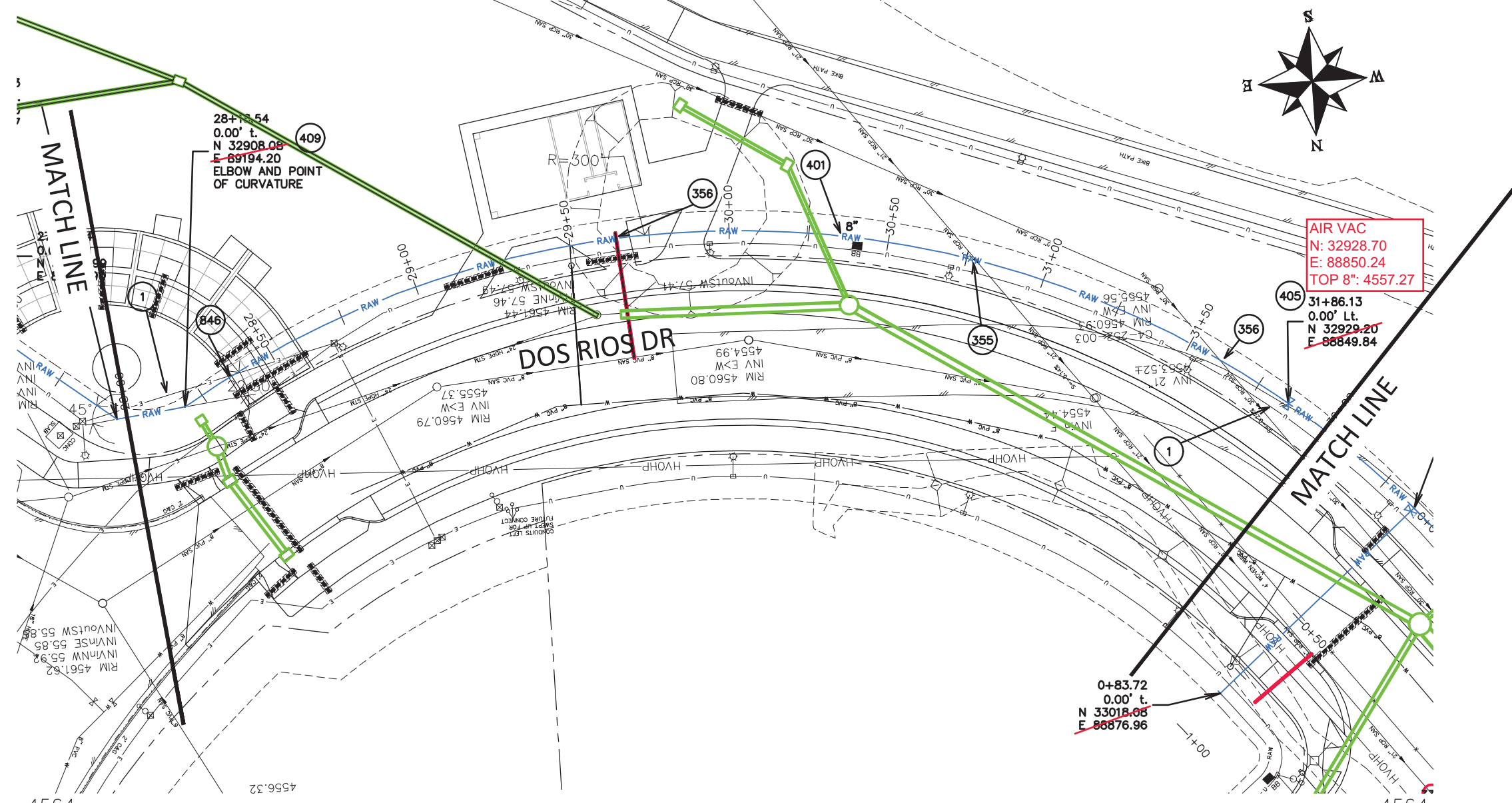
PUBLIC WORKS
ENGINEERING DIVISION

THE RIVERFRONT AT DOS RIOS
RAW WATER LINE - RA7
June 19, 2020

N:\Landproj\2020 RAW IRRIGATION LINE\60CAD\DWG100 DESIGN\RAW WATER LINE.dwg, 6/19/2020 7:42:37 AM

CONSTRUCTION NOTES

- 1 202 - REMOVAL OF ASPHALT MAT. CUT AND REMOVE ASPHALT AS NEEDED FOR PIPE INSTALLATION.
- 355 104.40 - CAP TOP HALF OF SEWER IN CONCRETE PER STD. DETAIL GU-04. (WATER LINE LESS THAN 18" ABOVE SEWER LINE)
- 356 104.40 - ENCASE ENTIRE SEWER IN REINFORCED CONCRETE PER STD. DETAIL GU-04. (ALL CASES WHERE WATER LINE BELOW SEWER LINE OR AT WATERWAY CROSSING)
- 401 102.7/108.2 - WATER MAIN PIPE (DR-25 PVC) (SIZE AS SHOWN). INCLUDES TYPE A BEDDING AND HAUNCHING MATERIAL AND BACKFILL OF TRENCH WITH NATIVE MATERIALS MEETING 103.16 EARTH BACKFILL MATERIAL.
- 405 102.8g/102.8h/108.3 - AIR VALVE AND VAULT (SIZE AS SHOWN).
- 409 102.8/108.3 - ELBOW (SIZE AND ANGLE AS SHOWN)
- 846 POT HOLE EXISTING UTILITY AHEAD OF CONSTRUCTION. TRANSITION WATER PIPE AS NEEDED TO MAINTAIN 18" CLEARANCE MINIMUM ABOVE SEWER PIPES AND 6" CLEARANCE MINIMUM ABOVE OR BELOW OTHER UTILITY LINES.



NOTE: NOTIFY AFFECTED UTILITY VENDOR 48 HOURS PRIOR TO EXCAVATIONS THAT WILL EXPOSE UTILITY LINES. THE UTILITY PLAN WILL HAVE A LISTING OF UTILITY VENDORS AND TELEPHONE NUMBERS.

REVISION	DESCRIPTION	DATE	DRAWN BY	DATE	SCALES:
REVISION			JCS	2020	PLAN & PROFILE
REVISION			BH/JCS	2020	0" = 10' HORIZONTAL
REVISION			BH	2020	0" = 1' VERTICAL
REVISION			ICP	2020	



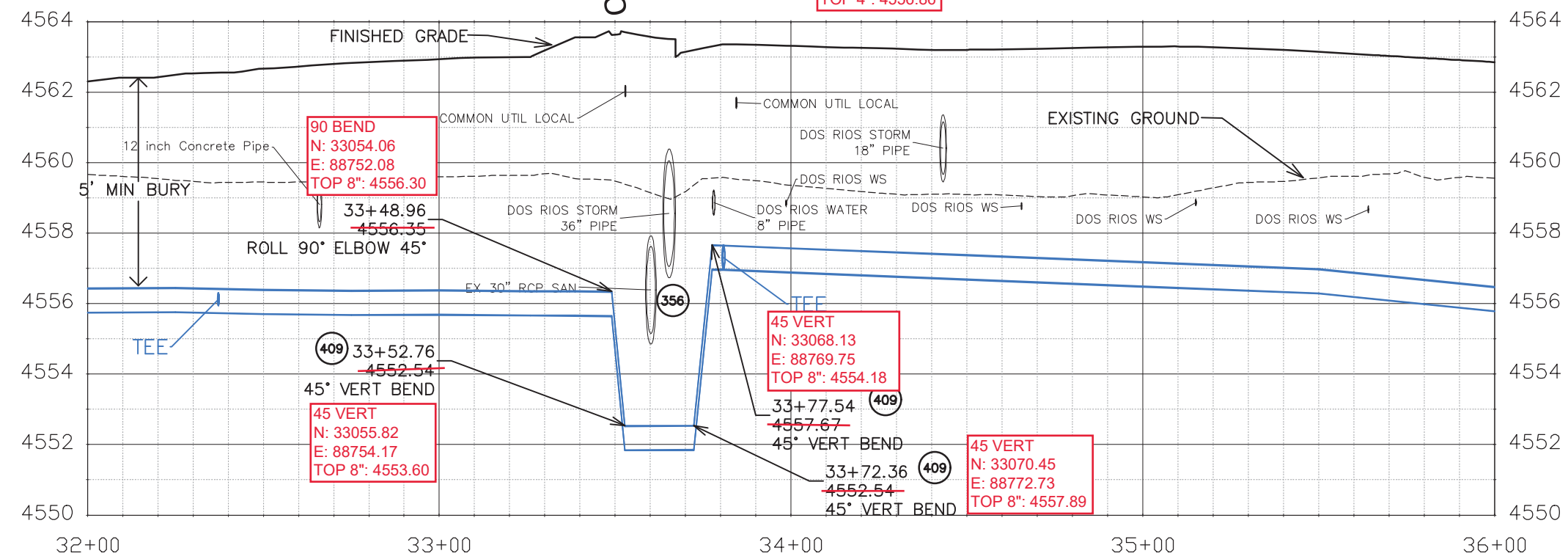
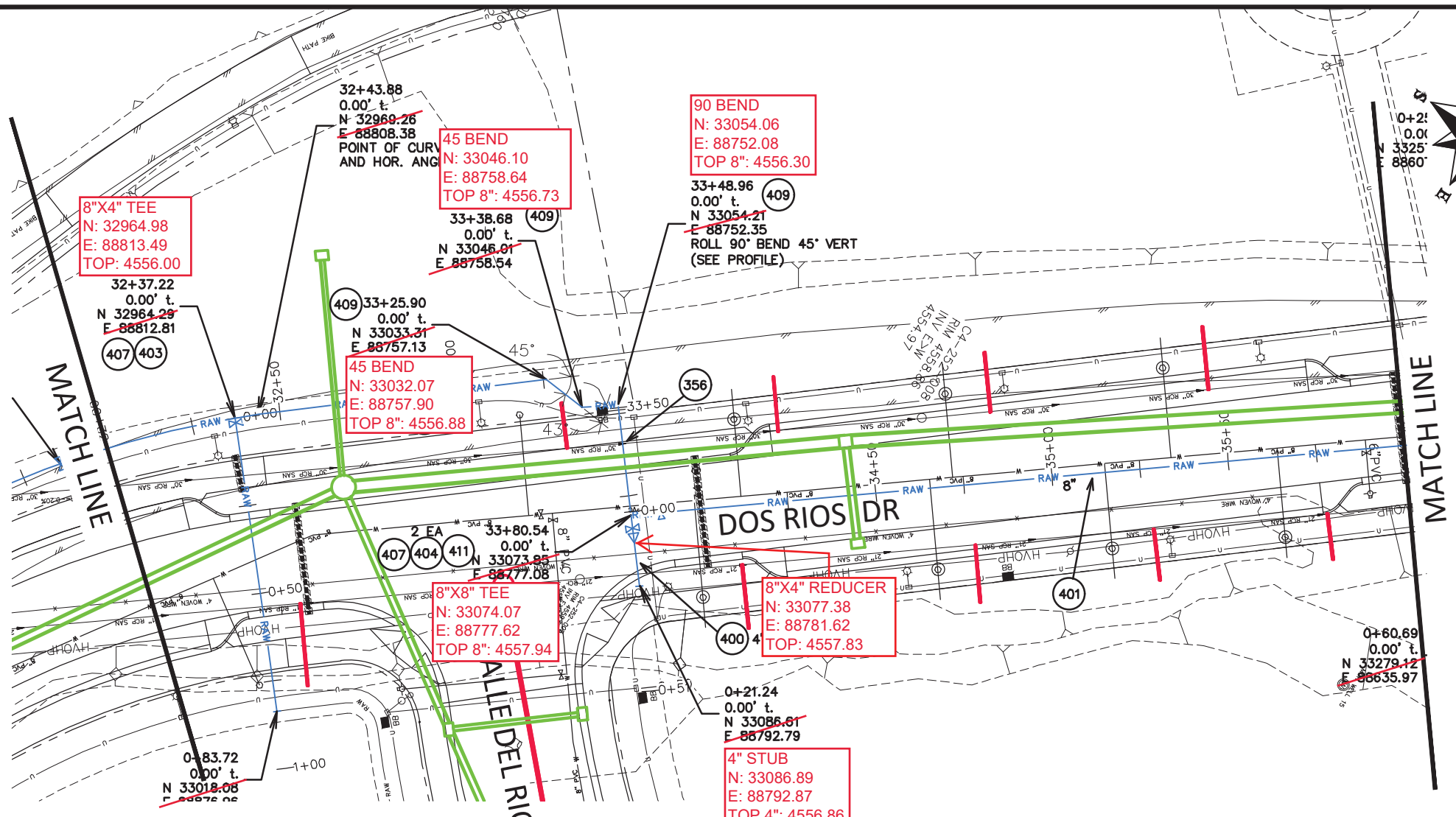
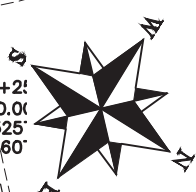
PUBLIC WORKS ENGINEERING DIVISION

**THE RIVERFRONT AT DOS RIOS
RAW WATER LINE - RAS
June 19, 2020**

N:\Landproj\2020 RAW IRRIGATION LINE\60CAD\DWG\00 DESIGN\RAW WATER LINE.dwg, 6/19/2020 7:43:04 AM

CONSTRUCTION NOTES

- 1 202 - REMOVAL OF ASPHALT MAT. CUT AND REMOVE ASPHALT AS NEEDED FOR PIPE INSTALLATION.
- 356 104.40 - ENCASE ENTIRE SEWER IN REINFORCED CONCRETE PER STD. DETAIL GU-04. (ALL CASES WHERE WATER LINE BELOW SEWER LINE OR AT WATERWAY CROSSING)
- 400 102.7/108.2 - WATER MAIN PIPE (C-900 PVC) (SIZE AS SHOWN). INCLUDES TYPE A BEDDING AND HAUNCHING MATERIAL AND BACKFILL OF TRENCH WITH NATIVE MATERIALS MEETING 103.16 EARTH BACKFILL MATERIAL.
- 401 102.7/108.2 - WATER MAIN PIPE (DR-25 PVC) (SIZE AS SHOWN). INCLUDES TYPE A BEDDING AND HAUNCHING MATERIAL AND BACKFILL OF TRENCH WITH NATIVE MATERIALS MEETING 103.16 EARTH BACKFILL MATERIAL.
- 403 102.8b/108.3 - GATE VALVE. (SIZE AS SHOWN)
- 404 BUTTERFLY VALVE (SIZE AS SHOWN).
- 407 102.8/108.3 - TEE (SIZE AS SHOWN).
- 409 102.8/108.3 - ELBOW (SIZE AND ANGLE AS SHOWN)
- 411 102.8/108.3 - REDUCER (SIZE AS SHOWN).



Know what's below.
Call before you dig.

NOTE: NOTIFY AFFECTED UTILITY VENDOR 48 HOURS PRIOR TO EXCAVATIONS THAT WILL EXPOSE UTILITY LINES. THE UTILITY PLAN WILL HAVE A LISTING OF UTILITY VENDORS AND TELEPHONE NUMBERS.

REVISION	DESCRIPTION	DATE	DRAWN BY	DATE
REVISION			JCS	2020
REVISION			BH/JCS	2020
REVISION			BH	2020
REVISION			ICP	2020

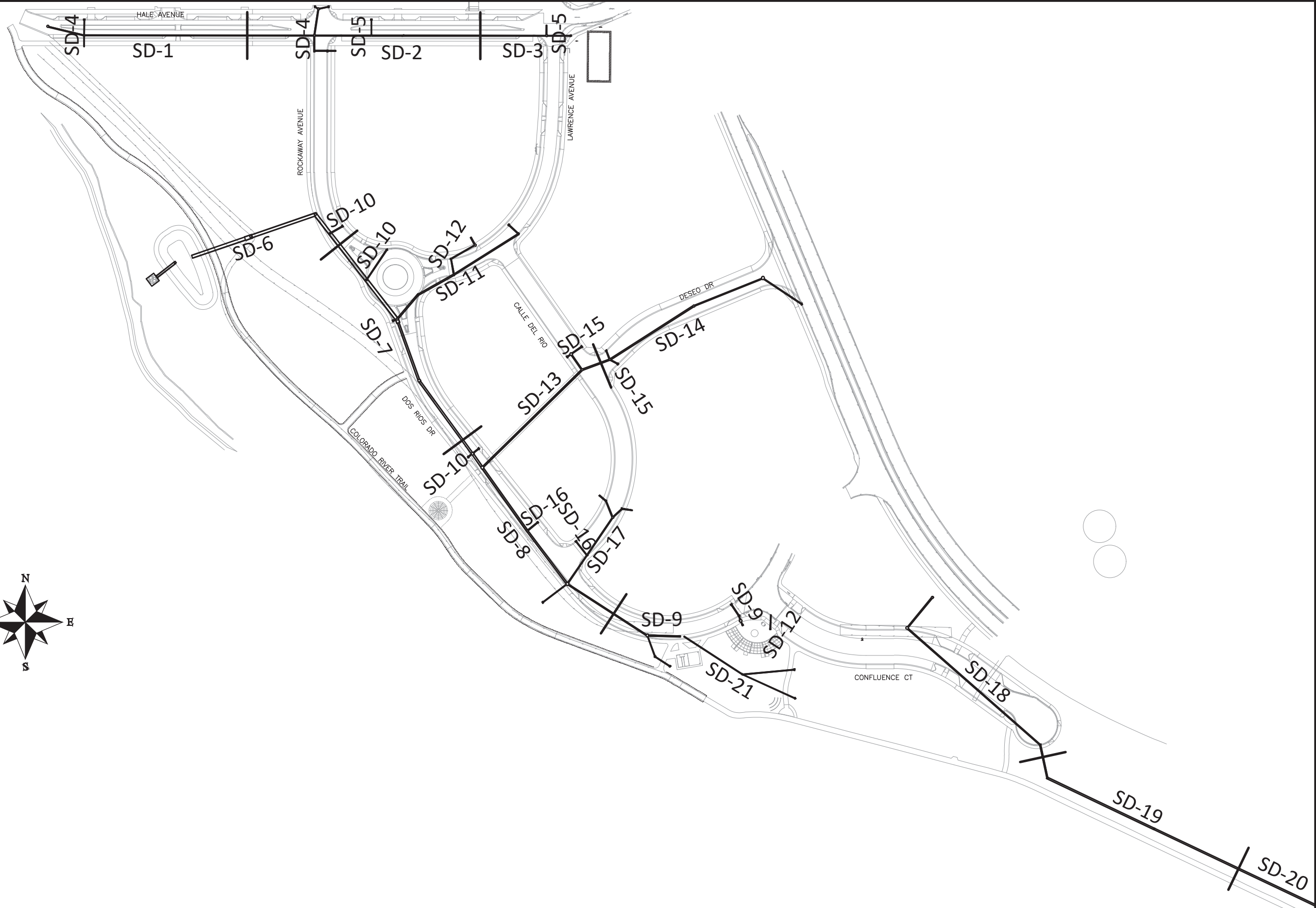
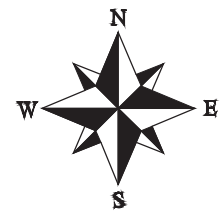
SCALES:
PLAN & PROFILE 0 10 20 40
0 1 2 4



PUBLIC WORKS
ENGINEERING DIVISION

THE RIVERFRONT AT DOS RIOS
RAW WATER LINE - RA9
June 19, 2020

N:\Landproj\2020 RAW IRRIGATION LINE\60CAD\DWG\00 DESIGN\RAW WATER LINE.dwg, 6/19/2020 7:43:32 AM

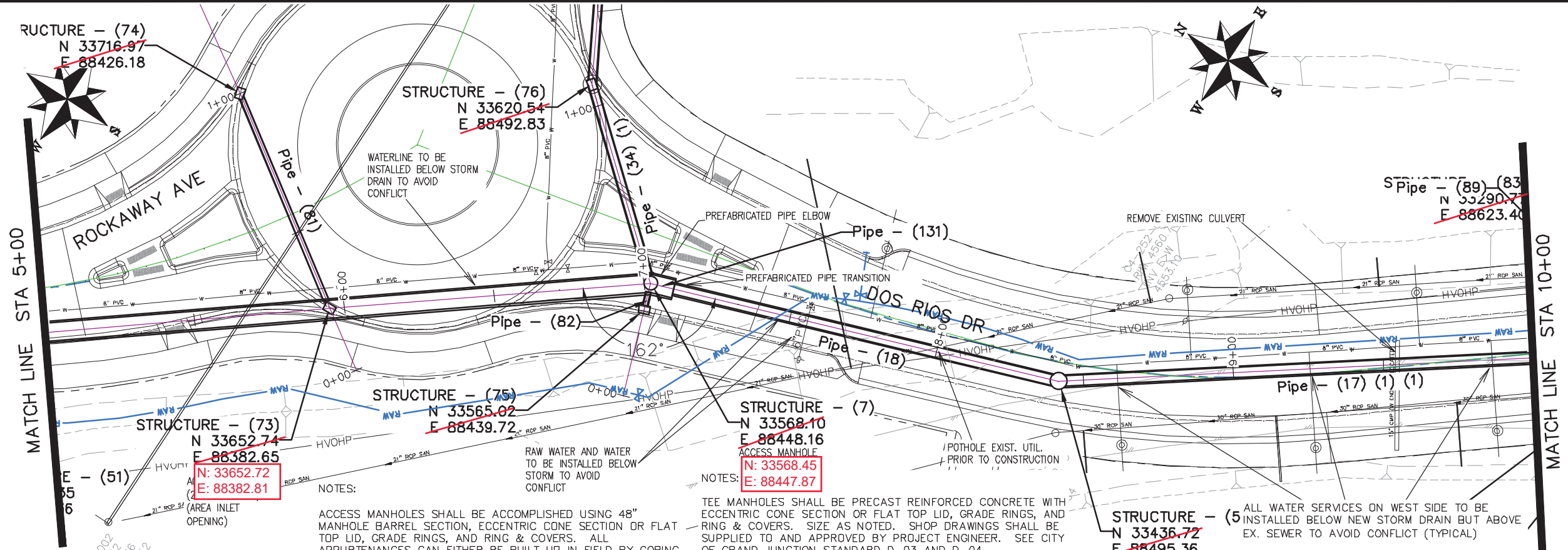


REVISION	DESCRIPTION	DATE	DRAWN BY	DATE	SCALE
△			JCS	2019	
△			JCS	2019	
△			BH	2019	
△			TCP	2019	
△					



PUBLIC WORKS
ENGINEERING DIVISION

THE RIVERFRONT AT DOS RIOS
STORM DRAIN SHEET INDEX
June 19, 2020



NOTES:
 ACCESS INLETS SHALL BE ACCOMPLISHED USING 24" X 36" I.D. CONCRETE BOX, AND EITHER VERTICAL CURB OPENING OR AREA INLET FRAME AND GRATE AS NOTED. ALL APPURTENANCES CAN EITHER BE BUILT UP IN FIELD BY CORING AND CONNECTING TO PIPE OR BE PRECAST. SHOP DRAWINGS SHALL BE SUPPLIED TO AND APPROVED BY PROJECT ENGINEER IF PRECAST. SEE CITY OF GRAND JUNCTION STANDARD D-02, D-07, D-10 AND D-12 FOR ADDITIONAL INFORMATION

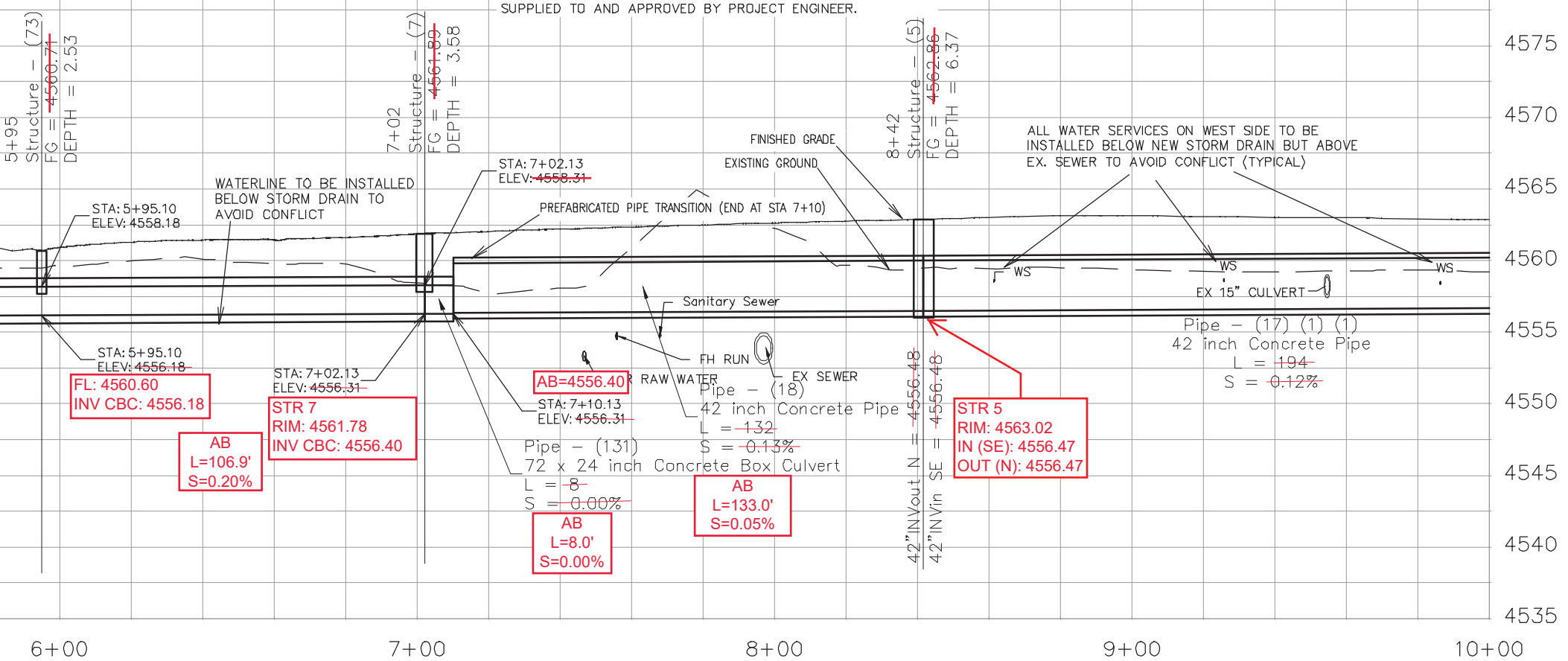
NOTES:
 ACCESS MANHOLES SHALL BE ACCOMPLISHED USING 48" MANHOLE BARREL SECTION, ECCENTRIC CONE SECTION OR FLAT TOP LID, GRADE RINGS, AND RING & COVERS. ALL APPURTENANCES CAN EITHER BE BUILT UP IN FIELD BY CORING AND CONNECTING TO PIPE OR BE PRECAST. SHOP DRAWINGS SHALL BE SUPPLIED TO AND APPROVED BY PROJECT ENGINEER IF PRECAST. SEE CITY OF GRAND JUNCTION STANDARD D-03, D-04, AND D-12 FOR ADDITIONAL INFORMATION

NOTES:
 TEE MANHOLES SHALL BE PRECAST REINFORCED CONCRETE WITH ECCENTRIC CONE SECTION OR FLAT TOP LID, GRADE RINGS, AND RING & COVERS. SIZE AS NOTED. SHOP DRAWINGS SHALL BE SUPPLIED TO AND APPROVED BY PROJECT ENGINEER. SEE CITY OF GRAND JUNCTION STANDARD D-03 AND D-04.

NOTES:
 PREFABRICATED PIPE ELBOWS - SHOP DRAWINGS SHALL BE SUPPLIED TO AND APPROVED BY PROJECT ENGINEER.

NOTES:
 ALL WATER SERVICES ON WEST SIDE TO BE INSTALLED BELOW NEW STORM DRAIN BUT ABOVE EX. SEWER TO AVOID CONFLICT (TYPICAL)

ALL STORM DRAIN PIPE SHALL BE SIZED PER PLAN NOTES AND BE REINFORCED CONCRETE PIPE OR ENGINEER APPROVED EQUAL. INCLUDES TYPE A BEDDING AND HAUNCHING MATERIAL AND BACKFILL OF TRENCH WITH NATIVE MATERIALS MEETING 103.16 EARTH BACKFILL MATERIAL.



REVISION	DESCRIPTION	DATE	DRAWN BY	DATE
△			JCS	2019
△			JCS	2019
△			BH	2019
△			TCP	2019

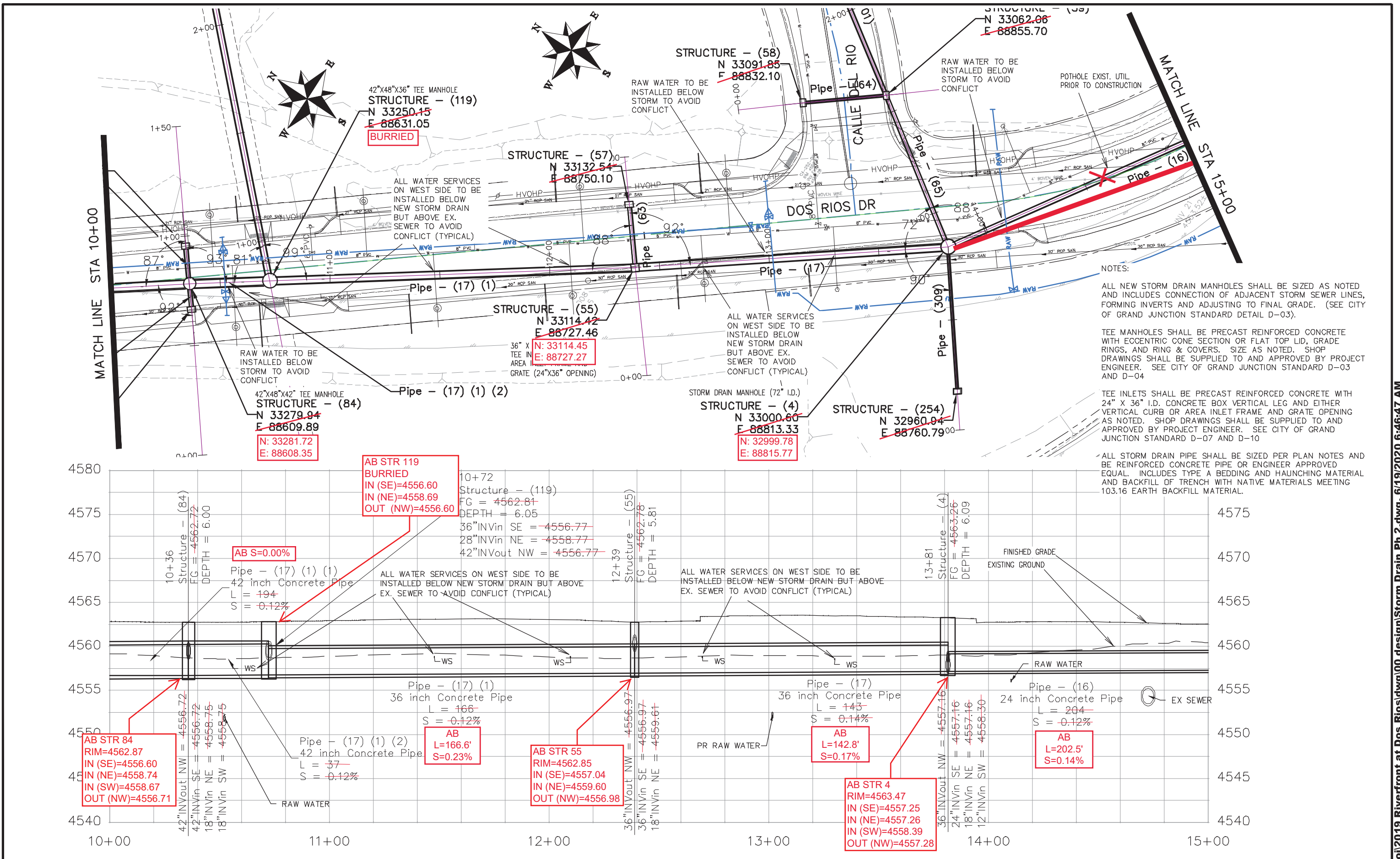
SCALE	PLAN & PROFILE
0 10 20 40	HORIZONTAL
0 2.5 5 10	VERTICAL



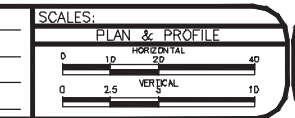
**PUBLIC WORKS
ENGINEERING DIVISION**

**THE RIVERFRONT AT DOS RIOS
STORM DRAIN PH 2 - SD-7
June 19, 2020**

N:\Landproj\2019 Riverfront at Dos Rios\dwg\00 design\Storm Drain Ph 2.dwg, 6/19/2020 6:45:59 AM



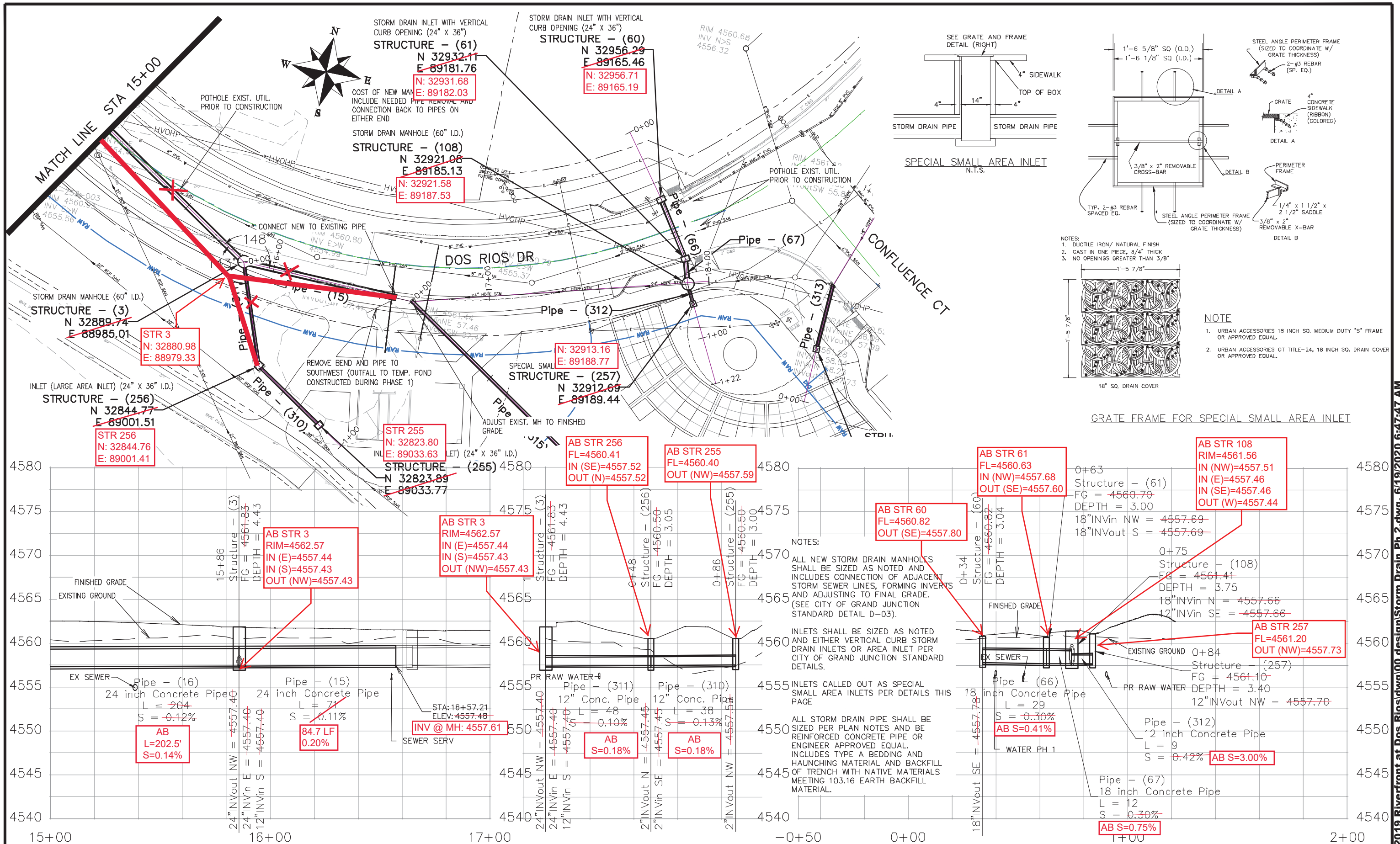
REVISION	DESCRIPTION	DATE	DRAWN BY	DATE
△			JCS	2019
△			JCS	2019
△			BH	2019
△			TCP	2019



PUBLIC WORKS
ENGINEERING DIVISION

THE RIVERFRONT AT DOS RIOS
STORM DRAIN PH 2 - SD-8
June 19, 2020

N:\Landproj\2019 Riverfront at Dos Rios\dwg\00 design\Storm Drain Ph 2.dwg, 6/19/2020 6:46:47 AM



REVISION	DESCRIPTION	DATE
△		
△		
△		
△		

DRAWN BY	JCS	DATE	2019
DESIGNED BY	JCS	DATE	2019
CHECKED BY	BH	DATE	2019
APPROVED BY	TCP	DATE	2019

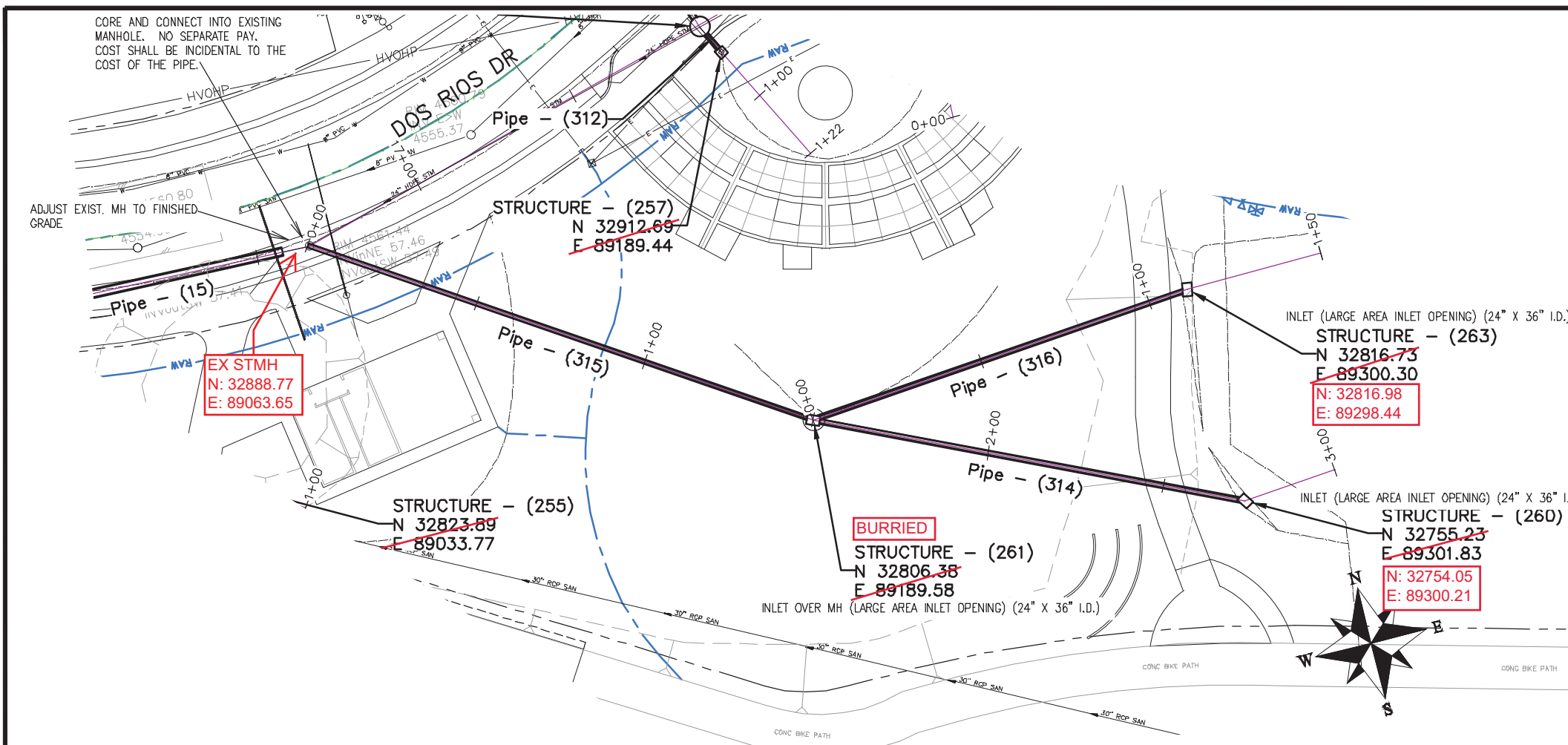
SCALES:
PLAN & PROFILE
0 10 20 40 HORIZONTAL
0 2.5 5 10 VERTICAL



**PUBLIC WORKS
ENGINEERING DIVISION**

**THE RIVERFRONT AT DOS RIOS
STORM DRAIN PH 2 - SD-9
June 19, 2020**

N:\Landproj\2019 Riverfront at Dos Rios\dwg\100 design\Storm Drain Ph 2.dwg, 6/19/2020 6:47:47 AM

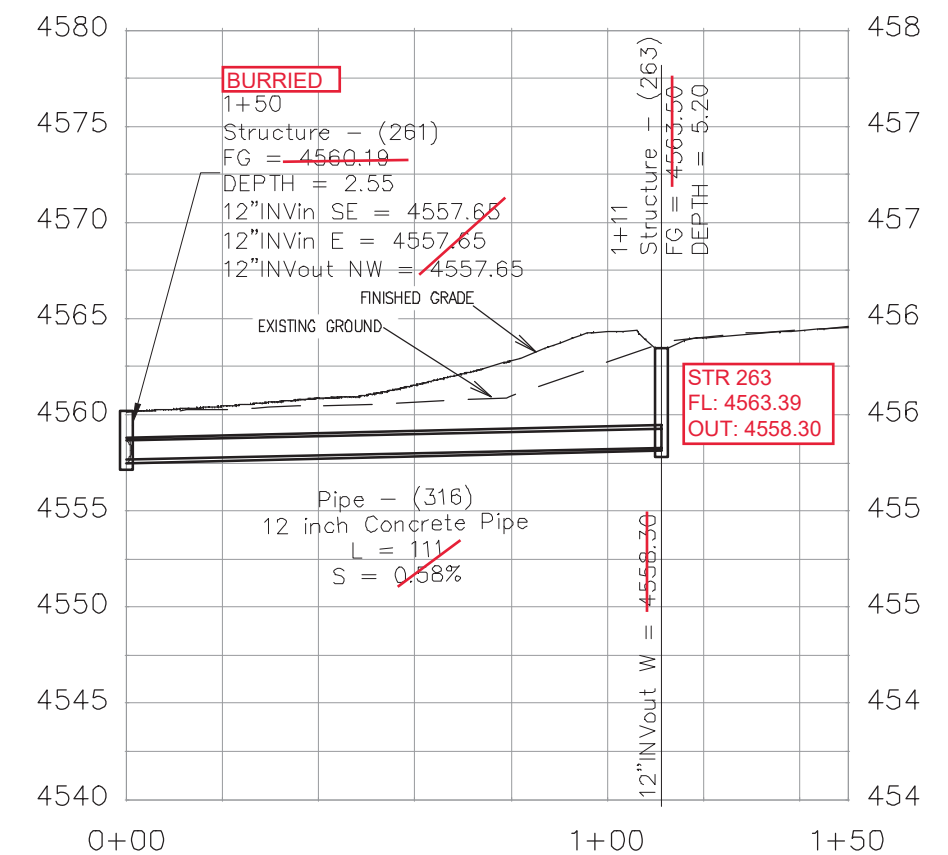
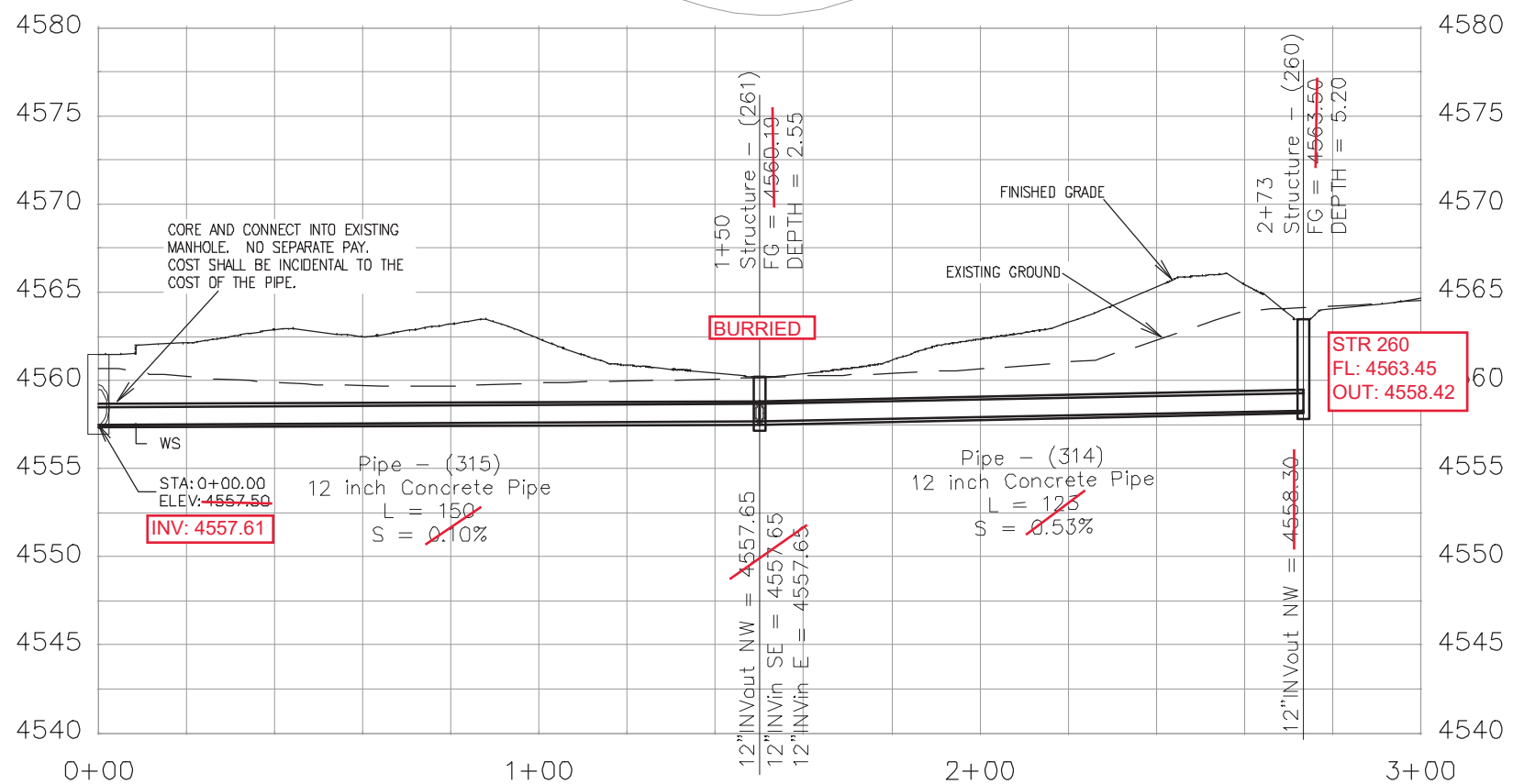


NOTES:

INLET OVER MH SHALL BE ACCOMPLISHED USING 24" X 36" I.D. CONCRETE BOX WITH EITHER VERTICAL CURB OPENING OR AREA INLET FRAME AND GRATE AS NOTED PLACED UPON AN 8" THICK FLAT TOP MH LID (84" O.D.) WITH 24" X 36" SQUARE OPENING AND THAT PLACED UPON 72" MANHOLE BARRELL SECTION. SHOP DRAWINGS SHALL BE SUPPLIED TO AND APPROVED BY PROJECT ENGINEER. SEE CITY OF GRAND JUNCTION STANDARD D-03, D-07, AND D-10 FOR ADDITIONAL INFORMATION

INLETS SHALL BE SIZED AS NOTED AND EITHER VERTICAL CURB STORM DRAIN INLETS OR AREA INLET PER CITY OF GRAND JUNCTION STANDARD DETAILS.

ALL STORM DRAIN PIPE SHALL BE SIZED PER PLAN NOTES AND BE REINFORCED CONCRETE PIPE OR ENGINEER APPROVED EQUAL. INCLUDES TYPE A BEDDING AND HAUNCHING MATERIAL AND BACKFILL OF TRENCH WITH NATIVE MATERIALS MEETING 103.16 EARTH BACKFILL MATERIAL.



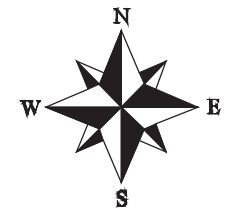
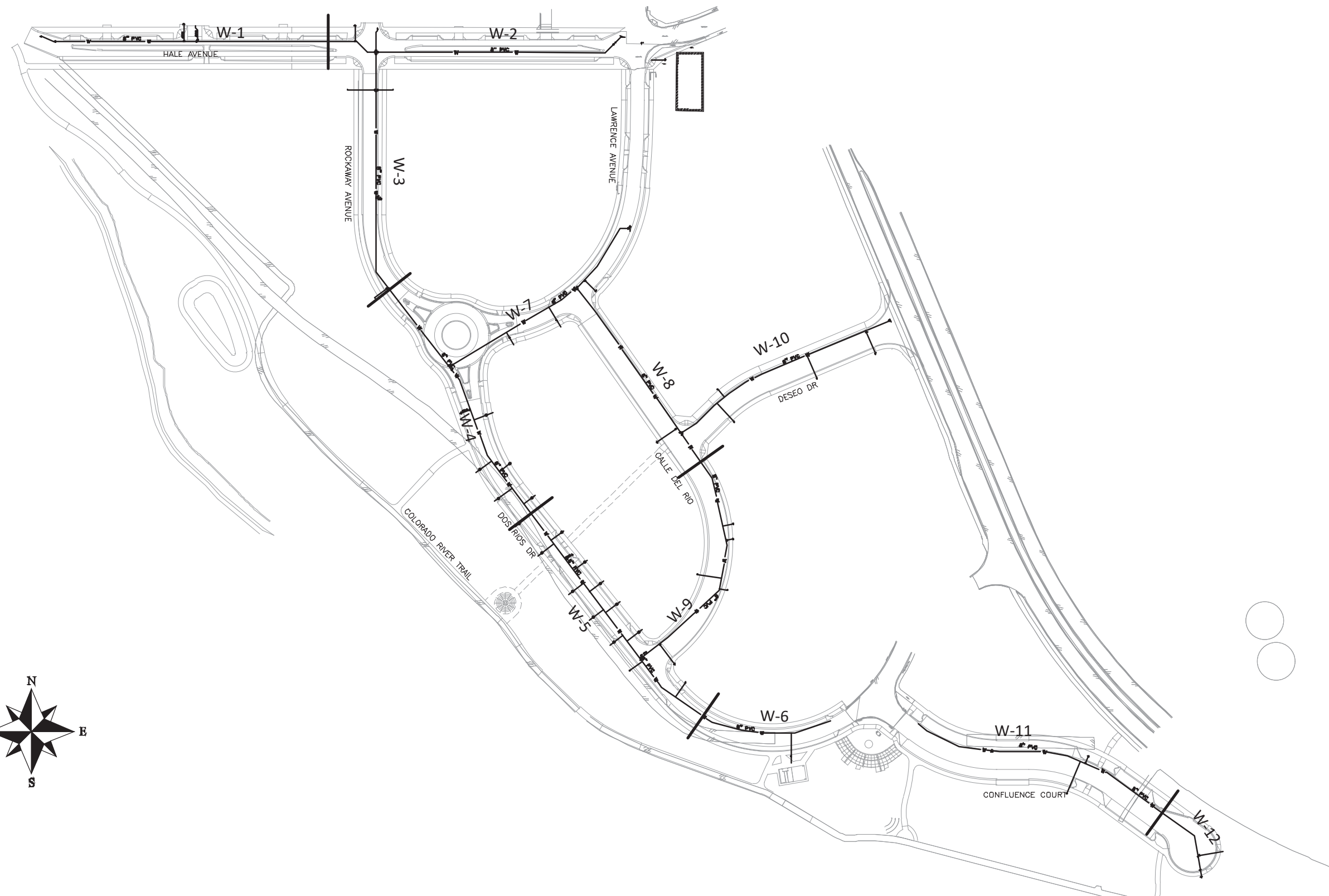
REVISION	DESCRIPTION	DATE	DRAWN BY	DATE	SCALES:
REVISION			JCS	2019	PLAN & PROFILE
REVISION			JCS	2019	0 10 20 30 40 HORIZONTAL
REVISION			BH	2019	0 2.5 5 10 VERTICAL
REVISION			TCP	2019	



PUBLIC WORKS
ENGINEERING DIVISION

THE RIVERFRONT AT DOS RIOS
STORM DRAIN PH 2 - SD-21
June 19, 2020

N:\Landproj\2019 Riverfront at Dos Rios\dwg\100 design\Storm Drain Ph 2.dwg, 6/19/2020 7:01:19 AM

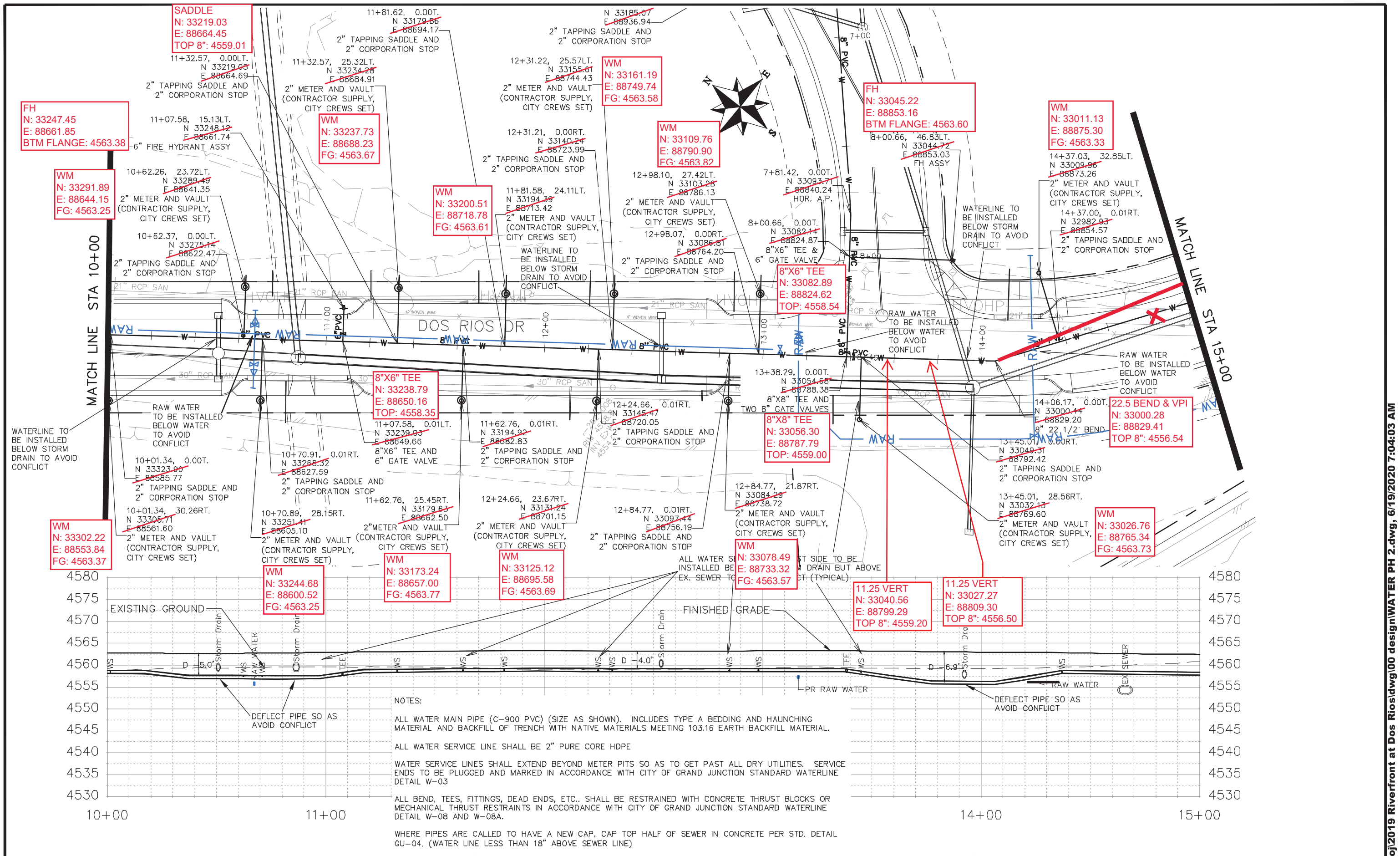


REVISION	DESCRIPTION	DATE	DRAWN BY	DATE	SCALE
△			JCS	2019	
△			JCS	2019	
△			BH	2019	
△			TCP	2019	



**PUBLIC WORKS
ENGINEERING DIVISION**

**THE RIVERFRONT AT DOS RIOS
WATER SHEET INDEX
June 19, 2020**



FH
N: 33247.45
E: 88661.85
BTM FLANGE: 4563.38

SADDLE
N: 33219.03
E: 88664.45
TOP 8": 4559.01

WM
N: 33291.89
E: 88644.15
FG: 4563.25

WM
N: 33237.73
E: 88688.23
FG: 4563.67

WM
N: 33200.51
E: 88718.78
FG: 4563.61

WM
N: 33161.19
E: 88749.74
FG: 4563.58

WM
N: 33109.76
E: 88790.90
FG: 4563.82

FH
N: 33045.22
E: 88853.16
BTM FLANGE: 4563.60

WM
N: 33011.13
E: 88875.30
FG: 4563.33

8"X6" TEE
N: 33082.89
E: 88824.62
TOP: 4558.54

8"X6" TEE
N: 33238.79
E: 88650.16
TOP: 4558.35

8"X8" TEE
N: 33056.30
E: 88787.79
TOP: 4559.00

22.5 BEND & VPI
N: 33000.28
E: 88829.41
TOP 8": 4556.54

WM
N: 33302.22
E: 88553.84
FG: 4563.37

WM
N: 33244.68
E: 88600.52
FG: 4563.25

WM
N: 33173.24
E: 88657.00
FG: 4563.77

WM
N: 33125.12
E: 88695.58
FG: 4563.69

WM
N: 33078.49
E: 88733.32
FG: 4563.57

WM
N: 33026.76
E: 88765.34
FG: 4563.73

REVISION	DESCRIPTION	DATE	DRAWN BY	DATE
REVISION			JCS	2018
REVISION			JCS	2018
REVISION			TCP	2018
REVISION			TCP	2018

SCALES:
PLAN & PROFILE
0" = 10'
0" = 25'



PUBLIC WORKS ENGINEERING DIVISION

THE RIVERFRONT AT DOS RIOS WATER PH 2 - W-5
June 19, 2020

N:\Landproj\2019 Riverfront at Dos Rios\dwg\00 design\WATER PH 2.dwg, 6/19/2020 7:04:03 AM

NOTES:

ALL WATER MAIN PIPE (C-900 PVC) (SIZE AS SHOWN). INCLUDES TYPE A BEDDING AND HAUNCHING MATERIAL AND BACKFILL OF TRENCH WITH NATIVE MATERIALS MEETING 103.16 EARTH BACKFILL MATERIAL.

ALL WATER SERVICE LINE SHALL BE 2" PURE CORE HDPE

WATER SERVICE LINES SHALL EXTEND BEYOND METER PITS SO AS TO GET PAST ALL DRY UTILITIES. SERVICE ENDS TO BE PLUGGED AND MARKED IN ACCORDANCE WITH CITY OF GRAND JUNCTION STANDARD WATERLINE DETAIL W-03

ALL BEND, TEES, FITTINGS, DEAD ENDS, ETC.. SHALL BE RESTRAINED WITH CONCRETE THRUST BLOCKS OR MECHANICAL THRUST RESTRAINTS IN ACCORDANCE WITH CITY OF GRAND JUNCTION STANDARD WATERLINE DETAIL W-08 AND W-08A.

WHERE PIPES ARE CALLED TO HAVE A NEW CONNECTION TO EXISTING SEWER IN CONCRETE PER STD. DETAIL CU-04. (WATER LINE LESS THAN 18" ABOVE EXISTING SEWER)

AB WL
N: 32947.77
E: 88918.84
TOP 8": 4558.35

AB WL
N: 32930.02
E: 88951.28
TOP 8": 4558.21

11.25 BEND
N: 32920.72
E: 88976.75
TOP 8": 4558.05

15+19.87, 0.00LT.
N 32935.89
E 88922.80
8" 22 1/4' BEND

15+76.55, 0.01LT.
N 32920.66
E 88977.39
8" 11 1/4' BEND

SADDLE
N: 32916.11
E: 89070.41
TOP 8": 4557.54

16+19.31, 0.00RT.
N 32915.00
E 89019.77
8" 11 1/4' BEND

16+70.11, 0.00T.
N 32915.36
E 89070.57
2" TAPPING SADDLE AND
2" CORPORATION STOP

WV
N: 32938.45
E: 89145.35
TOP NUT: 4558.05

17+47.77, 0.00T.
N 32938.68
E 89144.25
CONNECT NEW TO EXIST
PIPE (NO SEPARATE PAY)

0+00.00, 0.00T.
N 32932.45
E 89308.21
CONNECT TO EX PIPE
(NO SEPARATE PAY)

16+77.77, 0.01RT.
N 32915.41
E 89078.24
8" 11 1/4' BEND

11.25 VERT
N: 32926.53
E: 89114.38
TOP 8": 4556.66

11.25 VERT
N: 32929.52
E: 89121.88
TOP 8": 4555.35

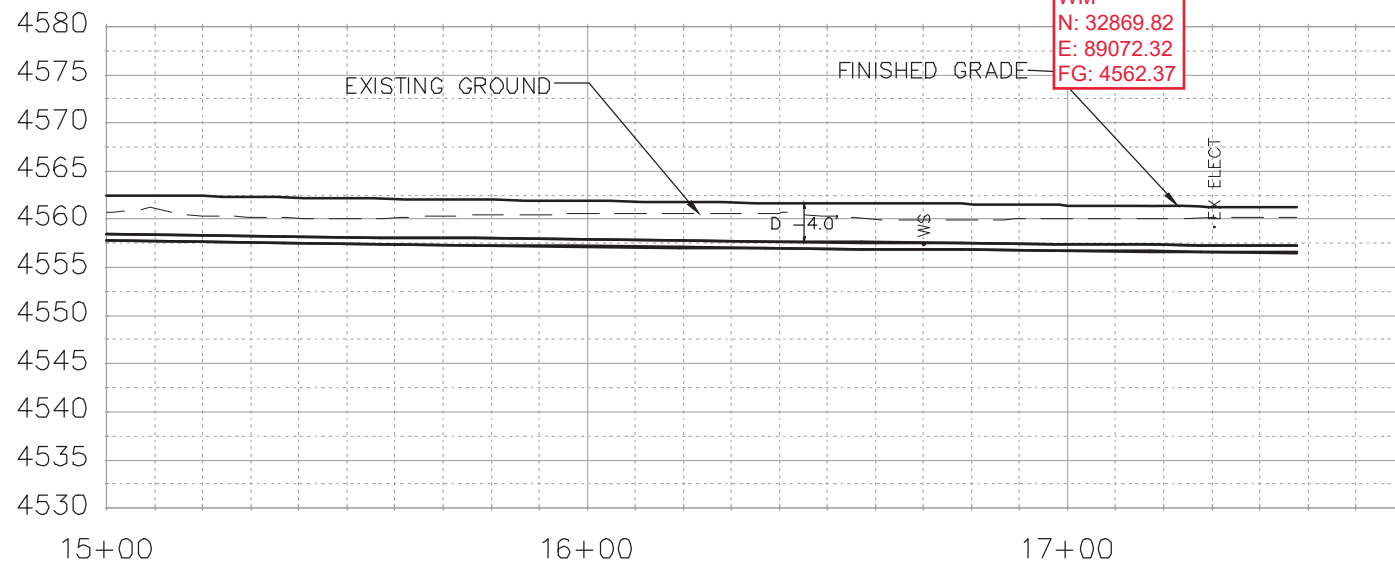
16+70.11, 43.58RT.
N 32871.78
E 89070.88
2" METER AND VAULT
(CONTRACTOR SUPPLY,
CITY CREWS SET)

11.25 BEND
N: 32915.86
E: 89078.39
TOP 8": 4557.52

SOLID SLEEVE
N: 32923.77
E: 89106.84
TOP 8": 4557.24

WM
N: 32869.82
E: 89072.37
FG: 4562.32

WATER SERVICE TO BE INSTALLED BELOW NEW STORM DRAIN BUT ABOVE EX. SEWER TO AVOID CONFLICT



REVISION	DESCRIPTION	DATE	DRAWN BY	DATE
△			JCS	2018
△			JCS	2018
△			TCP	2018
△			TCP	2018

SCALES:
PLAN & PROFILE 0 10 20 40 HORIZONTAL
0 2.5 5 10 VERTICAL



PUBLIC WORKS
ENGINEERING DIVISION

THE RIVERFRONT AT DOS RIOS
WATER PH 2 - W-6
June 19, 2020