

APRIL 15, 2022  
3:00 PM

# RFP-5035-22-KH

## Design/Build Destination Playground Equipment and Installation for Dos Rios Park

Prepared by  
Rocky Mountain Recreation, Inc  
PO Box 620411  
Littleton, CO 80162  
303.783.1452 / [info@rmrec.com](mailto:info@rmrec.com)

Prepared for  
City of Grand Junction

ROCKY MOUNTAIN



RECREATION<sub>INC</sub>

# A. COVER LETTER

Rocky Mountain Recreation would like to thank you for the opportunity to provide a proposal for a new destination playground at Dos Rios Park. We pride ourselves in providing a turnkey playground design that meets or exceeds all Federal, United States Consumer Product Safety Commission (CPSC), American Society of Testing and Materials (ASTM), and International Playground Equipment Manufacturers Association (IPEMA) requirements and guidelines.

It is a top priority of Rocky Mountain Recreation and Landscape Structures to provide a user-friendly play experience to children and family members with a variety of abilities and limitations. The highlight of our work is seeing the smile on the face of a child that gets to swing, climb, and interact with other kids on the playground in a way they haven't been able to before. We want to bring this type of playground environment to the community of Grand Junction.

This proposal includes 3 design concepts aimed at creating excitement and adventure for all. Each design is unique in its own way and showcases the superior equipment and design ability that Rocky Mountain Rec and Landscape Structures is able to provide.

We're proud to offer the most comprehensive long-term warranty on the market, offering a 3-year warranty on moving parts compared to a standard 1-year warranty. Using Landscape Structures equipment with the most robust and comprehensive playground warranty on the market, we can guarantee the citizens of Grand Junction will be enjoying Dos Rios Playground for generations to come.

With nearly 28 years of experience building playgrounds, Rocky Mountain Recreation brings a dedicated Project Team comprised of highly trained Sales Consultants, a designer with over 15 years of landscape designing experience, and a post sale Project Manager who is solely dedicated to the thorough understanding and successful execution of each project's Scope of Work.

Thank you for your consideration and review of Rocky Mountain Recreation's proposal.

*Evan Baer*

Evan Baer  
COO

# WHO WE REPRESENT

Rocky Mountain Recreation has been the manufacturers' reps for **Landscape Structures**, an employee-owned company, since 1994. Rocky Mountain Recreation offers turn key solutions throughout Colorado for playground projects, splash pad and aquatic play in addition to shading, surfacing and seating solutions. From initial design conception to installation, our team offers outstanding service to complete all aspects of your project.

Over recent years, Landscape Structures has branched out into the play equipment market subcategories of large-scale shade and water play.

From small shade to big shade and decorative shade to themed shade, our **SkyWays**<sup>®</sup> shade structures by Landscape Structures offer flexible and stylish options to make everywhere that people gather outside more comfortable.

With nearly 35 years experience, **Aquatix**<sup>®</sup> has been a pioneer of experiential water feature and spray park design, fabrication and construction. In joining forces with Landscape Structures, our imaginative designs will continue to advance the world of dynamic water events – achieving new levels of chilling thrills, challenging interactive games and inventive water-based activities. Aquatix<sup>®</sup> visionary aqua play areas are designed to help you create a dynamic destination that welcomes people of all abilities.

**DuMor Site Furnishings** a proud U.S. manufacturer of site furnishings, was founded over 30 years ago based on the steadfast belief in providing the best quality product. This tradition of attention to quality along with DuMor's commitment to providing superior customer service continues today and makes DuMor one of the leading names in the site furnishings industry. Our extensive selection of site furnishings includes commercial outdoor benches, waste and recycling receptacles, tables, chairs, bike racks, planters, bollards, and custom site furniture.



# ABOUT US

Rocky Mountain Recreation offers turnkey innovative commercial playground, water play and splash pad design and installation services throughout Colorado. Additionally, we provide outdoor fitness equipment and obstacle courses along with custom shading solutions, surfacing and site furnishings. Our extensive selection of site furnishings includes commercial outdoor benches, waste and recycling receptacles, tables, chairs, bike racks, planters, bollards, and custom site furniture.

The company has been family owned since it was founded in 1994 and still remains family owned to this day. We have chosen to represent companies that carry a family or employee ownership, offering the most innovative and durable products on the market.

With a diverse group of clients including landscape architects, schools, churches, HOA's, municipalities, day care/preschool centers, camps, private clubs, military bases and much more, we aim to create space for ALL children to be kids, where they can explore, play and challenge themselves. Whether you have a dream or a plan that needs to be brought to life, we are here to help you make those dreams and ideas come true.



## Experienced

*Bringing over 27 years of experience to construct over 1,000 play spaces*



## Durable

*Our playground equipment carries a 3 year warranty on moving parts, going beyond the industry standard 1 year!*



## Customer Satisfaction

*Our playgrounds consistently receive 5-star ratings on Google; click the 5- star icon on our reference pages to access reviews!*



# QUALIFICATIONS & EXPERIENCE

Rocky Mountain Recreation has 28 years of experience providing turnkey playground solutions throughout Colorado. In this time, we have completed over 1,000 playground installations that include inclusive play with pour-in-place surfacing. The following pages highlight our experience and provide references. Our team would be honored to provide additional references upon your request.

Our references include not only the playground buyer/operator, but we also connect you with reviews of playground users. By clicking the blue box or stars within the Google Review, you can access the full list of reviews for each playground location!

The stats below share why so many park operators choose to invest in Rocky Mountain Recreation for their next playground!!

---

**1250**

Play spaces built

**3**

Year warranty on  
moving parts

**5-STAR**

Reviews on  
Google for our  
playground builds

---

# PROJECT TEAM

Rocky Mountain Recreation offers turn key solutions throughout Colorado for playground projects, splash pad and aquatic play in addition to shading, surfacing and seating solutions. From initial design conception to installation, our team offers outstanding service to complete all aspects of your project.

Everyone in our office will be involved in this playground project from beginning to end. Having a small office gives us the advantageous ability to provide all hands-on deck for each project with unique, dedicated attention. See below for each project team members roles and responsibilities within Rocky Mountain Recreation.

**Evan Baer**  
COO  
CPSI

Evan has been with Rocky Mountain Recreation since 2010, working her way up to COO since her entry-level position as an installation assistant out in the field. Evan's thorough knowledge of the product and installation process, along with her enthusiastic personality ensure that her customers receive nothing but the finest playground environments.

**Jarett Baer**  
Project Manager  
CPSI

Jarett has been with Rocky Mountain Recreation since 2018 assisting clients from sales to project completion. In his current role as the Project Manager, Jarett ensures that all trades and scope of the project install seamlessly within the required schedule.

**Isabel Keegan**  
Office Manager

Isabel has been with Rocky Mountain Recreation since 2014. She is the friendly, reliable voice on the other end of your phone calls to ensure the playground buying experience runs smoothly. She is available to assist all departments in the long paperwork trail of the project from beginning to end.

# PROJECT TEAM

...continued!

**Leslie Amico**  
Sales Consultant  
&  
Aquatic  
Play Manger

Leslie has been with Rocky Mountain Recreation since 2020 and has over 10 years of sales and marketing experience in the AEC industry with a focus on recreation. In addition to working on playground projects throughout Colorado, Leslie leads the water play solutions for Rocky Mountain Recreation. Her educational background is a B.S. in Recreation, Parks and Tourism Sciences.

**Amanda Castelli**  
Designer

Amanda brings over 15 years of landscape design experience to Rocky Mountain Recreation. As our in-house designer, Amanda is a liaison between our clients and our Landscape Structures design team. She works closely throughout the design process to ensure our client's playground space achieves the project goals, design requirements and overall budget. She has a demonstrated history of working in community and neighborhood park design, as well as school and playground design. Her certifications include CPSI and LEED AP. Additionally, she has Planning and Geographical Information Systems (GIS) experience.

**Caroline Owen**  
Sales Consultant

Caroline has been with Rocky Mountain Recreation since 2021. With professional experience ranging from education to office management, Caroline brings a diverse and versatile set of tools to the table. She assists in the office, answering phone calls, working on various administrative projects, as well as customer playground projects. With a customer service focused attitude, Caroline works hard to ensure that all customers' needs are fulfilled properly and timely.

## B. Qualifications/Experience/Credentials

# PLAYGROUND EXPERIENCE AND CAPABILITIES

Rocky Mountain Recreation has been creating innovative play spaces in Colorado for almost 30 years and we cover all aspects of playground design/build experience right here in our office.

The team for this project is being led by Caroline Owen with the assistance of Evan Baer. Caroline in sales put these three designs together with the help of our in-house playground designer, Amanda Castelli. Evan is always at the ready to assist with technical information and 11 years of experience helping customers make their Landscape Structures playground purchases.

Most LSI playgrounds are 'Design/Build' in nature, we contrast with other play equipment vendors by offering a second-to-none custom design and fabrication team and every playground is unique. This knowledge, innovation and experience go hand in hand with the best installation crew around for a successful design and planning process all the way through installation.

Landscape Structures has a well rounded team of architects, engineers, and designers who we work in partnership with to ensure the playgrounds we design meet all codes and safety requirements while looking awesome and providing adventurous and inclusive play experiences for all.

The 'feather in our cap' when it comes to design/build is Paco Sanchez Park in Denver, CO. Truly a partnership between the owner, landscape architect, general contractor, Landscape Structures, and Rocky Mountain Rec, this playground design is one of a kind and pushes the boundaries of traditional play.

See playground reference pages for examples for projects of varying complexity, size and scope. Rocky Mountain Recreation is capable of taking on just about any playground project and always excited for a challenge!

## B. Qualifications/Experience/Credentials

# COMMISSIONING, PERFORMANCE VERIFICATION, AND TRAINING

a/b- The three proposed designs have been created by RMR's in-house landscape designer with previously engineered play equipment products by Landscape Structures. RMR has been the sole vendor in Colorado for Landscape Structures since 1994 which gives us a thorough understanding of the products and processes by which our playgrounds are designed and installed. Installation is arguably the most crucial part of the execution of a playground project and we see our installer as a partner in achieving a successful outcome. If selected, our installer, Redwoods Precision Landscaping will be responsible for the construction of the playground and they are the best in the industry. They have been installing primarily Landscape Structures equipment in partnership with RMR for about 10 years. Scott Humphrey, the owner of Redwoods, is the hands-on crew lead on every project which is guarantees top notch performance and presentation throughout the process. He, and all of our backup installers, are Landscape Structures manufacturer certified installers.

c- Landscape Structures provides an O&M kit with every order which includes a binder with complete installation instructions, certification info, touch up paint that coordinates with the playground colors, specifications, contact info for maintenance questions, etc.

## B. Qualifications/Experience/Credentials

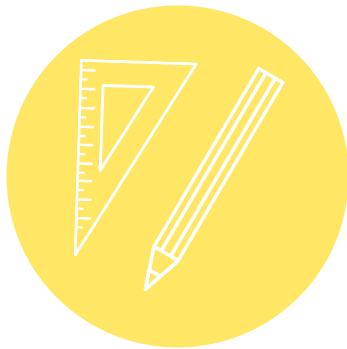
### WHY ROCKY MOUNTAIN REC?

Outstanding customer service, industry leading warranty support, innovative design, low cost of ownership, are just some of the reasons customers choose to invest in Landscape Structures equipment with Rocky Mountain Recreation.

But don't just hear it from us! We provide an extensive list of references and connect to Google Reviews of our playground builds. Click the five stars on each reference sheet to link to Google Reviews of our builds.

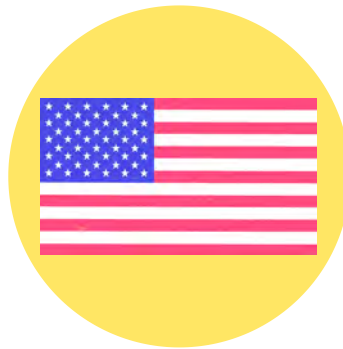


Clients and park goers will confirm, Rocky Mountain Recreation provides outstanding equipment and services!



#### INNOVATIVE DESIGN

Expert designs that meet or exceed ADA standards, provided by Rocky Mountain Recreation, the Colorado Representative for Landscape Structures, Inc., the industry leader in innovative and inclusive commercial playground equipment.



#### USA MADE

From site furnishings, to shade and playground solutions, our products are USA made by USA companies. Support local family owned businesses with a purchase from Rocky Mountain Recreation.



#### COST OF OWNERSHIP

Investing in a Rocky Mountain Rec playground provides the most economical cost of ownership. High quality equipment combined with industry leading warranty provides durable playgrounds that stand the test of time and weather.



# A Solid Investment In Fun!

A true value of a well-crafted playground is realized over time - lower operational costs, fewer headaches and countless hours of safer fun. To ensure that you get the most out of your investment, we build proprietary products using only the finest materials. Our unique combination of unprecedented design experience and precision manufacturing capabilities results in playgrounds that last a lifetime. And, of course, we stand behind everything we make.

## Insightful Product Design

We perform all of our designs engineering & manufacturing in-house, so each step is carefully followed-through under our watchful eye as we inspire, innovate and evolve ideas together.

## Unique Design

Ready to create a playground unlike any other? No one offers more design expertise, material options, advanced manufacturing capabilities or guidance to bring to your unique destination to life. Our design teams are ready when you are.

## Unparalleled Quality

Superior materials, fit and finishes ensure our playgrounds are built to last decades instead of years. We proudly manufacture nearly all of our products in the U.S.A.

## Dedicated to Customer Satisfaction

Expect a great experience. Continuous improvement is at the heart of our industry-best order accuracy, on-time delivery record and flexibility. And it's how we say with confidence - if you're not happy, we'll make things right - right away.

## Industry Leading Warranty Support

Landscape Structures is an employee-owned company, we take great pride in the quality of everything we make. We back our products with the most comprehensive long-term warranties in the industry.



Investment Example

## Total Cost of Ownership

### Ysleta Independent School District

### Landscape Structures Playgrounds Purchases

### Ysleta Independent School District

Purchase Year Playgrounds	2005 31
Total Purchases Years of Service	\$2,043,521 16 (2021)
Total Replace/Repair Cost to Customer Per Year	\$4,370 \$312.16
% Cost to Customer	0.21%

## C. Strategy and Implementation Plan

### Overview of Project Design and Elements

# Option 1 - Hedra Hive Theme

Rocky Mountain Recreation is pleased to present the unique and adventurous Hedra Hive Theme playground design for Dos Rios Playground!

This design features LSI's Hedra collection of play structures. The tessellated shapes of the Hedra creates playful pods that link together, forming a fascinating interconnected matrix of three-dimensional play. With multiple options at any given point, the Hedra playstructures encourage improvisation, sparking cognitive and imaginative exploration.

The Hedra (5-12 ages) and Hedra Scout (2-5 ages) offer a wide range of play events and play possibilities for children of any ability.

# \$300,000.00



**3 freestanding spinning elements:** Curva Spinner, ReviWhirl Spinner, and Saddle Spinner

Rocky Mountain Recreation also carefully selected each freestanding play element to accompany the Hedra structures.

**2-5 Age Swing Sets:**  
2 Full Bucket Seats

**5-12 Age Swing Sets:**  
4 Belt Swings and 2 ADA Accessible Molded Bucket Seats with Harnesses

**2 DigiFused riders:**  
DigiRider Bear and DigiRider Butterfly



# HEDRA HIVE THEME



Hedra  
Play Structure  
Age 5-12



Curva

Scout  
Play Structure  
Age 2-5



Saddle  
Spinner



Butterfly  
DigiRider

Bear  
DigiRider



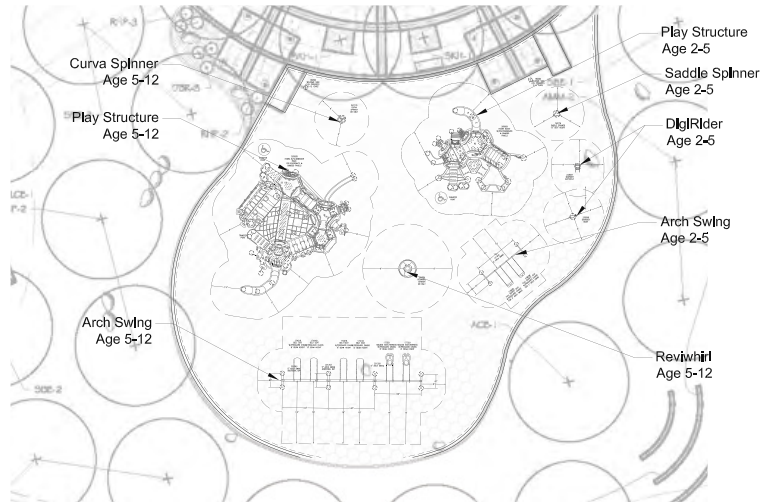
ReviWhirl



Arch  
Tot  
Swings



Arch Swings





Playground Cross Section



Reviwhirl

Arch Swings

Hedra

Play Components Age 5-12



DigiRiders

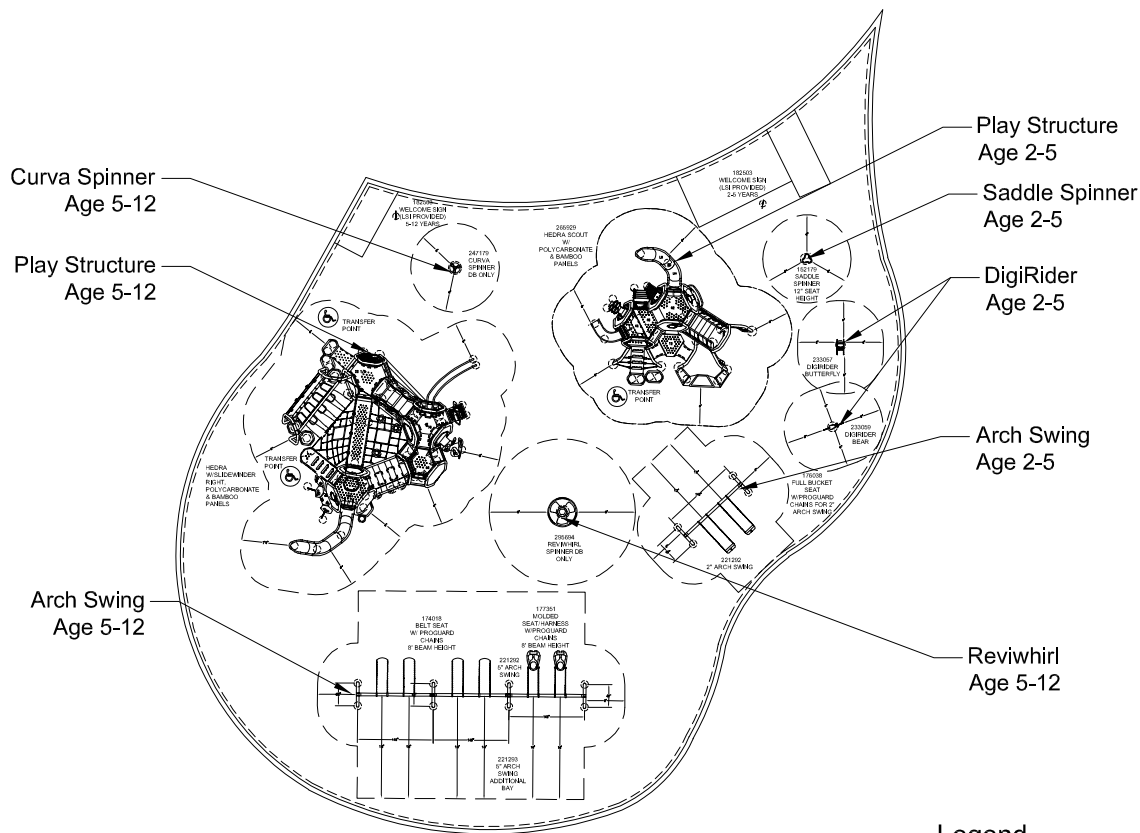
Tot Swings

Saddle Spinner

Hedra Scout

Play Components Age 2-5





**Age 2-5**

TOTAL ELEVATED PLAY COMPONENTS	12		
TOTAL ELEVATED COMPONENTS ACCESSIBLE BY RAMP		REQUIRED	0
TOTAL ELEVATED COMPONENTS ACCESSIBLE BY TRANSFER	7	REQUIRED	6
TOTAL ACCESSIBLE GROUND LEVEL COMPONENTS SHOWN	9	REQUIRED	4
TOTAL DIFFERENT TYPES OF GROUND LEVEL COMPONENTS	6	REQUIRED	3

**Age 5-12**

TOTAL ELEVATED PLAY COMPONENTS	14		
TOTAL ELEVATED COMPONENTS ACCESSIBLE BY RAMP	0	REQUIRED	0
TOTAL ELEVATED COMPONENTS ACCESSIBLE BY TRANSFER	10	REQUIRED	7
TOTAL ACCESSIBLE GROUND LEVEL COMPONENTS SHOWN	14	REQUIRED	5
TOTAL DIFFERENT TYPES OF GROUND LEVEL COMPONENTS	7	REQUIRED	4

**Legend**

- ADA Transfer Point/Station
- 6" Offset



The play components identified on this plan are IPEMA certified. (Unless model number is preceded with \*) The use and layout of these components conform to the requirements of ASTM F1487. To verify product certification, visit [www.ipema.org](http://www.ipema.org)

THIS PLAY AREA & PLAY EQUIPMENT IS DESIGNED FOR AGES 2-5, 5-12 YEARS UNLESS OTHERWISE NOTED ON PLAN.

IT IS THE MANUFACTURER'S OPINION THAT THIS PLAY AREA DOES CONFORM TO THE A.D.A. ACCESSIBILITY STANDARDS, ASSUMING AN ACCESSIBLE PROTECTIVE SURFACING IS PROVIDED, AS INDICATED, OR WITHIN THE ENTIRE USE ZONE.

THIS CONCEPTUAL PLAN WAS BASED ON INFORMATION AVAILABLE TO US. PRIOR TO CONSTRUCTION, DETAILED SITE INFORMATION INCLUDING SITE DIMENSIONS, TOPOGRAPHY, EXISTING UTILITIES, SOIL CONDITIONS, AND DRAINAGE SOLUTIONS SHOULD BE OBTAINED, EVALUATED, & UTILIZED IN THE FINAL DESIGN. PLEASE VERIFY ALL DIMENSIONS OF PLAY AREA, SIZE, ORIENTATION, AND LOCATION OF ALL EXISTING UTILITIES, EQUIPMENT, AND SITE FURNISHINGS PRIOR TO ORDERING. SLIDES SHOULD NOT FACE THE HOT AFTERNOON SUN.

CHOOSE A PROTECTIVE SURFACING MATERIAL THAT HAS A CRITICAL HEIGHT VALUE TO MEET THE MAXIMUM FALL HEIGHT FOR THE EQUIPMENT (REF. ASTM F1487 STANDARD CONSUMER SAFETY PERFORMANCE SPECIFICATION FOR PLAYGROUND EQUIPMENT FOR PUBLIC USE, SECTION 8 CURRENT REVISION). THE SUBSURFACE MUST BE WELL DRAINED. IF THE SOIL DOES NOT DRAIN NATURALLY IT MUST BE TILED OR SLOPED 1/8" TO 1/4" PER FOOT TO A STORM SEWER OR A "TRENCH DRAW".

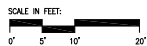
ACCESSIBLE/PROTECTIVE LOOSE FILL MATERIAL (ENGINEERED WOOD FIBER SUGGESTED) 8634 SF

IT IS THE MANUFACTURER'S OPINION AND INTENT THAT THE LAYOUT OF THESE COMPONENTS CONFORM WITH THE U.S. CONSUMER PRODUCT SAFETY COMMISSION'S (CPSC) "HANDBOOK FOR PUBLIC PLAYGROUND SAFETY".

DESIGNED BY:

COPYRIGHT: 03-14-2022  
 LANDSCAPE STRUCTURES, INC.  
 601 7th STREET SOUTH - P.O. BOX 196  
 DELAND, MINNESOTA 55328  
 PH: 1-800-328-0035 FAX: 1-763-972-6091

Date	Previous Drawing #	Initials
------	--------------------	----------



Dos Rios Playground  
 Option A  
 Grand Junction, CO



SYSTEM TYPE:  
**Hedra**

DRAWING #:  
**01**



Overview of Project Design and Elements

# Option A - Hedra Hive Theme





Overview of Project Design and Elements

# Option A - Hedra Hive Theme

In this design process Rocky Mountain Recreation kept in focus the specific desired elements expressed by the City. You will see a natural but fun and fresh color palette to accompany surrounding landscape. **Hedra** includes 2 material options for panels—bamboo and polycarbonate. Not only is bamboo a rapidly renewable and sustainable resource, this engineered, laminated natural material adds texture and a warm aesthetic to the Hedra. The polycarbonate panels, which are translucent, provide visibility into the structure as well as light and color play.



# Option A - Hedra Hive Theme

## Hedra for 5-12 Ages



**ADA compliant with  
Multiple entry  
points and  
interconnected  
experiences**





## Option A - Hedra Hive Theme

### Hedra for Ages 5-12

Click [HERE](#) to see the  
*Hedra in action!*



## Option A - Hedra Hive Theme

### Hedra for Ages 5-12

#### Developmental Benefits

##### **Sensory**

Proprioception, Tactile, Vestibular+, Visual

##### **Motor Skills**

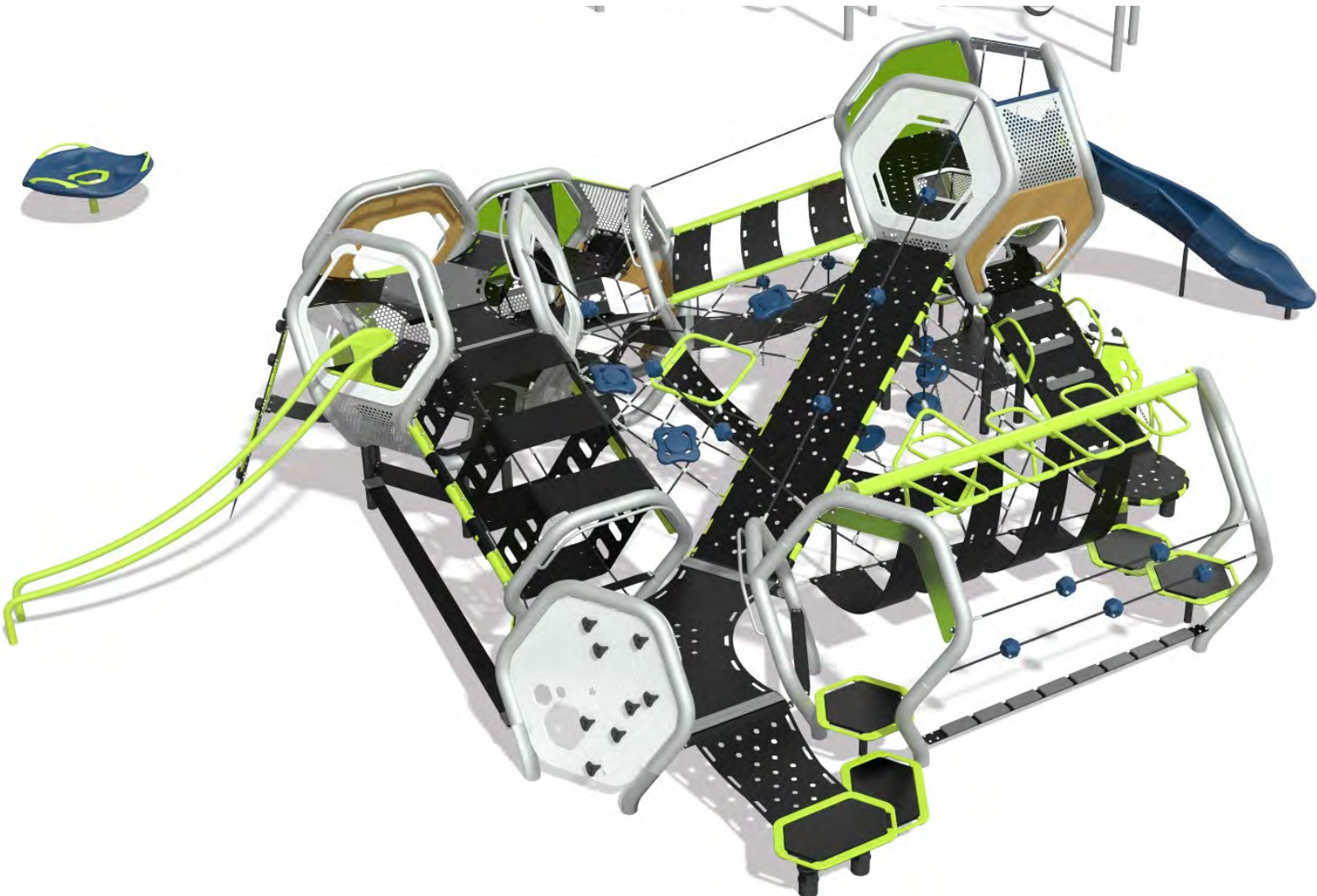
Agility, Balance, Cardiovascular, Coordination, Core Body Strength, Endurance, Eye-Hand Coordination, Fine Motor, Flexibility, Lower Body Strength, Motor Planning, Upper Body Strength

##### **Cognitive Skills**

Problem Solving, Strategic Thinking

##### **Social/Emotional Skills**

Cooperation, Imaginative Play, Social Skill Development





C. Strategy and Implementation Plan  
Overview of Project Design and Elements  
**Option A - Hedra Hive Theme**

**Hedra Scout for Ages 2-5**



**Introduce young players to the many benefits of dynamic play on the Hedra Scout. Developmentally appropriate activities populate this geometric circuit of continuous exploration.**





## C. Strategy and Implementation Plan

### Overview of Project Design and Elements

#### Option A - Hedra Hive Theme

## Hedra Scout for Ages 2-5



A climber with a wide variety of challenging play events!

An integrated transfer point supports access for those who are able to leave their mobility device.

Children can experience sliding and engage in a variety of fine motor play experiences.



Click [HERE](#) to see the Hedra Scout in action!



## C. Strategy and Implementation Plan

### Overview of Project Design and Elements

## Option A - Hedra Hive Theme

# Hedra Scout for Ages 2-5

### Developmental Benefits

#### **Sensory**

Proprioception, Tactile, Vestibular+, Visual

#### **Motor Skills**

Agility, Balance, Cardiovascular, Coordination, Core Body Strength, Endurance, Eye-Hand Coordination, Fine Motor, Flexibility, Lower Body Strength, Motor Planning, Upper Body Strength

#### **Cognitive Skills**

Problem Solving, Strategic Thinking

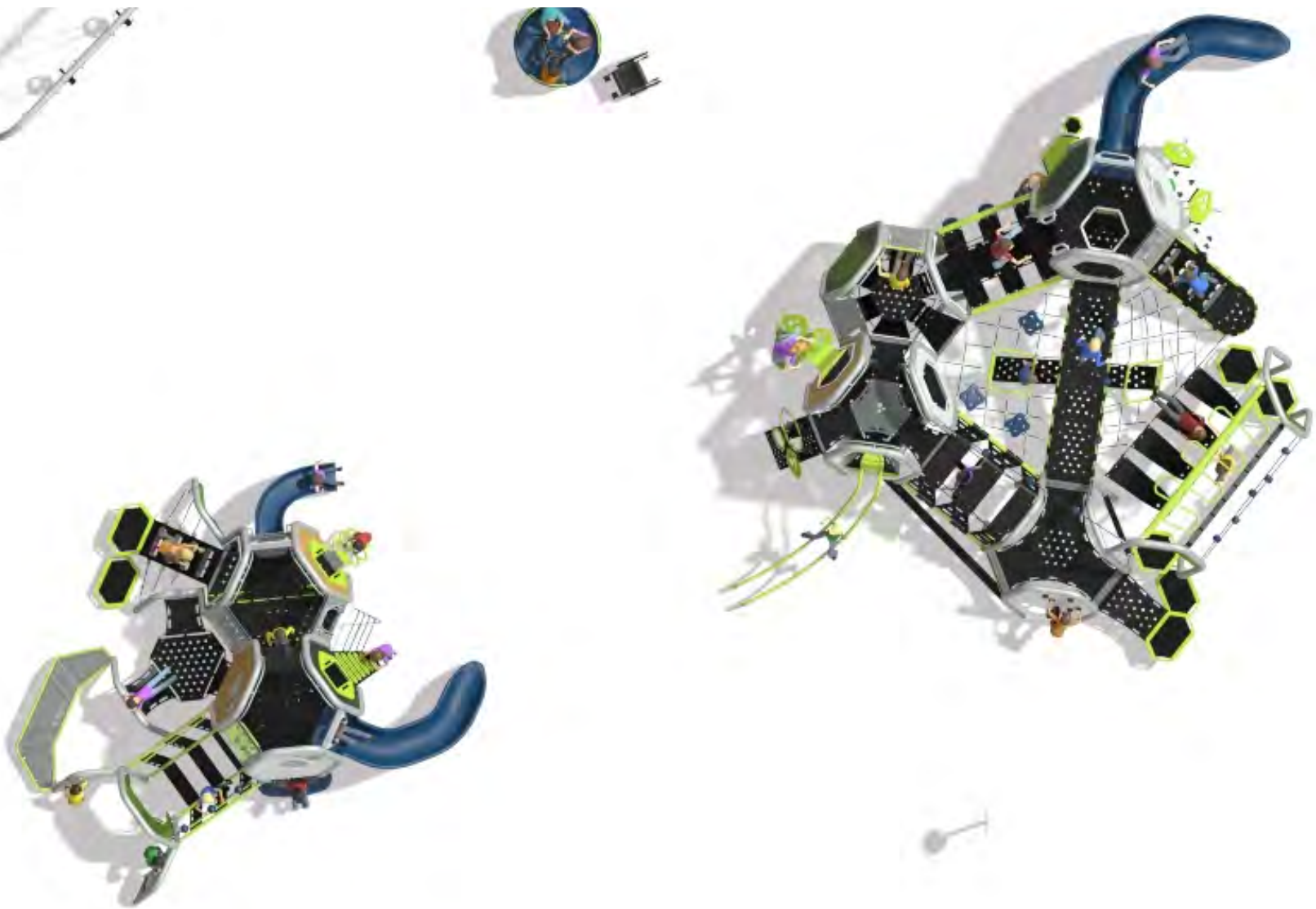
#### **Social/Emotional Skills**

Cooperation, Imaginative Play, Social Skill Development



Overview of Project Design and Elements

# Option A - Hedra Hive Theme



## C. Strategy and Implementation Plan

### Overview of Project Design and Elements

## Option A - Hedra Hive Theme

### Freestanding Play - Spinners

Click [HERE](#)  
to see the **Saddle Spinner**  
in action!

#### Saddle Spinner

The Saddle Spinner helps kids learn about cause-and-effect as they use their body weight to spin. Allows kids to spin the day away as their body weight shifts and they develop better depth perception and balance.



#### Curva Spinner

The Curva Spinner is a beautiful and fun addition to any play space. One child or multiple kids can ride around and around. The spinning motion offers vestibular stimulation and promotes experimentation with centrifugal force and cause-and-effect.

Click [HERE](#)  
to see the **Curva Spinner**  
in action!

Click [HERE](#)  
to see the **ReviWhirl**  
in action!

#### ReviWhirl Spinner

The ReviWhirl Spinner is an adventure in physics offering spinning through perpetual motion or a push from the outside. We've designed this piece with inclusion in mind with space for one or many kids riding in various positions. ReviWhirl's sculptural form adds an eye-catching flair to any play experience.





## C. Strategy and Implementation Plan

### Overview of Project Design and Elements

#### Option A - Hedra Hive Theme

#### Freestanding Play - Swings

##### 2-5 Age Swing Set:

**2 Full Bucket Seats** with no S-hooks to pinch small fingers, made of high-performing EPDM to resist cracking, and rounded top edge and stainless steel spring inserts to add extra durability and softness



##### 5-12 Age Swing Set:

**4 Belt Swings and 2 ADA Accessible Molded Bucket Seats with Harnesses**

The **Molded Bucket Seat** with Harness and Chains provides greater stability for kids with limited upper-body strength.



## C. Strategy and Implementation Plan

### Overview of Project Design and Elements

#### Option A - Hedra Hive Theme

#### Freestanding Play - DigiRiders

Bounce away with the colorful DigiRider Bear and Butterfly!

Durable, low maintenance, and pinch-point-free, these spring rider lasts for years of rough-riding fun!



Click [HERE](#) to see the DigiRider in action!

#### **Developmental Benefits**

##### **Sensory**

Proprioception, Tactile, Vestibular+, Visual

##### **Motor Skills**

Balance, Coordination, Core Body Strength, Flexibility, Lower Body Strength, Motor Planning, Upper Body Strength

##### **Cognitive Skills**

Problem Solving

##### **Social/Emotional Skills**

Cooperation, Imaginative Play, Social Skill Development





## C. Strategy and Implementation Plan

### Overview of Project Design and Elements

# Alternate Proposal: Option B - Alpha Tower Theme

Rocky Mountain Recreation is pleased to present an alternate proposal with the Alpha Towers Theme.

Two towers double the climbing challenges and are linked by an elevated crawl tunnel for an exhilarating scramble from one tower to the other. It's a physical and social wonderland where imaginations can soar. To accompany the Alpha Towers we have included the SmartPLay Cube playstructure for ages 2-5. With 14 activities addressing developmentally-appropriate skills, the Cube has a unique look, bringing a sculptural, modernistic feel to your play space.

# \$300,000.00



**Eclipse Net Climber**

**ZipKrooz Assisted 50'**

**Rocky Mountain Recreation also carefully selected each freestanding play element to accompany the play structures.**

**3 Spinning elements: 2 Curva Spinners, 1 Saddle Spinner**

**5-12 Age Swing Sets:**

**1 ADA Friendship Swing, 2 Full Bucket Seats, 2 Belt Seats**

**1 DigiFused riders: DigiRider Bear**



# ALPHA TOWER THEME



ZipKrooz



Curva

Play Structure  
Age 5-12



Saddle  
Spinner

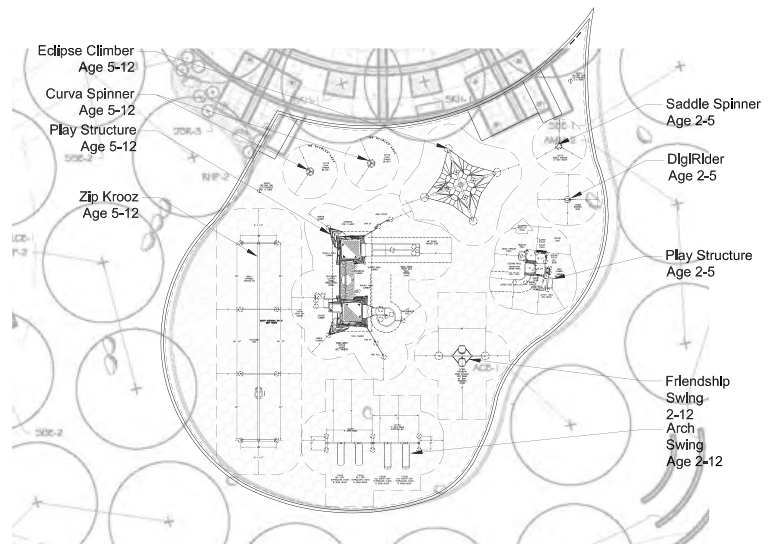
Bear  
DigiRider

Eclipse  
Climber

Play  
Structure  
Age 2-5

Friendship  
Swings

Arch Swings





Playground Cross Section



Eclipse Climber

Curva

Alpha Tower Link

Swings

Zip Krooz

Play Components Age 5-12



Tot Swings

Friendship Swings

Cube Play Structure

DigiRider

Play Components Age 2-5

Eclipse Climber  
Age 5-12

Curva Spinner  
Age 5-12

Play Structure  
Age 5-12

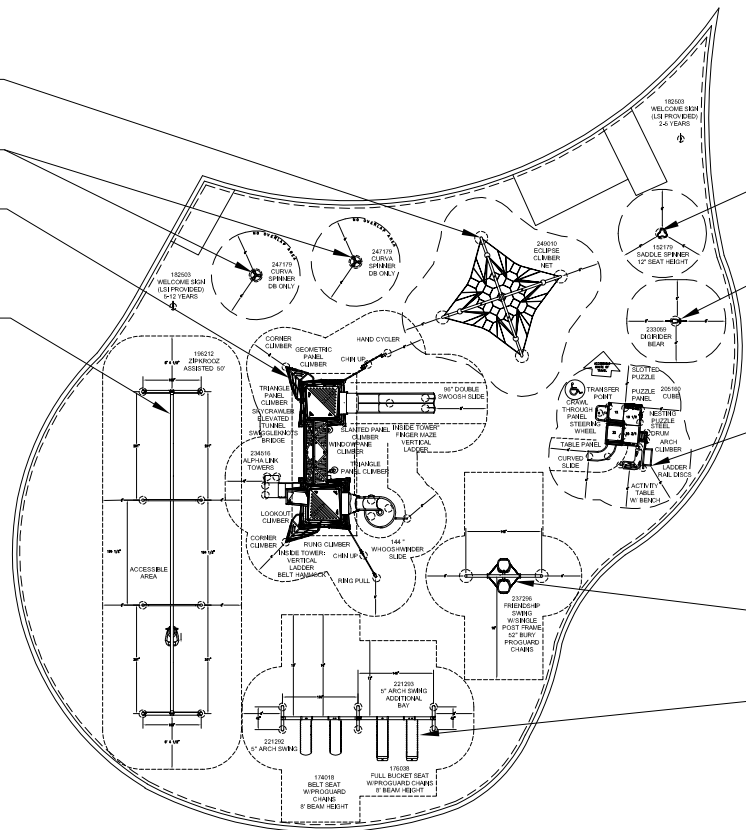
Zip Krooz  
Age 5-12

Saddle Spinner  
Age 2-5

DigiRider  
Age 2-5

Play Structure  
Age 2-5

Friendship  
Swing  
2-12  
Arch  
Swing  
Age 2-12



Age 2-5

TOTAL ELEVATED PLAY COMPONENTS	9		
TOTAL ELEVATED COMPONENTS ACCESSIBLE BY RAMP	0	REQUIRED	0
TOTAL ELEVATED COMPONENTS ACCESSIBLE BY TRANSFER	9	REQUIRED	5
TOTAL ACCESSIBLE GROUND LEVEL COMPONENTS SHOWN	6	REQUIRED	3
TOTAL DIFFERENT TYPES OF GROUND LEVEL COMPONENTS	6	REQUIRED	4

Age 5-12

TOTAL ELEVATED PLAY COMPONENTS	16		
TOTAL ELEVATED COMPONENTS ACCESSIBLE BY RAMP	0	REQUIRED	0
TOTAL ELEVATED COMPONENTS ACCESSIBLE BY TRANSFER	8	REQUIRED	8
TOTAL ACCESSIBLE GROUND LEVEL COMPONENTS SHOWN	14	REQUIRED	5
TOTAL DIFFERENT TYPES OF GROUND LEVEL COMPONENTS	8	REQUIRED	3

Legend

- ADA Transfer Point/Station
- 6" Offset



The play components identified on this plan are IPEMA certified. (Unless model number is preceded with \*) The use and layout of these components conform to the requirements of ASTM F1487. To verify product certification, visit [www.ipema.org](http://www.ipema.org)

THIS PLAY AREA & PLAY EQUIPMENT IS DESIGNED FOR AGES 5-5, 5-12 YEARS UNLESS OTHERWISE NOTED ON PLAN.

IT IS THE MANUFACTURER'S OPINION THAT THIS PLAY AREA DOES CONFORM TO THE A.D.A. ACCESSIBILITY STANDARDS, ASSUMING AN ACCESSIBLE PROTECTIVE SURFACING IS PROVIDED, AS INDICATED, OR WITHIN THE ENTIRE USE ZONE.

THIS CONCEPTUAL PLAN WAS BASED ON INFORMATION AVAILABLE TO US PRIOR TO CONSTRUCTION. DETAILED SITE INFORMATION INCLUDING SITE DIMENSIONS, TOPOGRAPHY, EXISTING UTILITIES, SOIL CONDITIONS, AND DRAINAGE SOLUTIONS SHOULD BE OBTAINED, EVALUATED, & UTILIZED IN THE FINAL DESIGN. PLEASE VERIFY ALL DIMENSIONS OF PLAY AREA, SIZE, ORIENTATION, AND LOCATION OF ALL EXISTING UTILITIES, EQUIPMENT, AND SITE FURNISHINGS PRIOR TO ORDERING. SLIDES SHOULD NOT FACE THE HOT AFTERNOON SUN.

CHOOSE A PROTECTIVE SURFACING MATERIAL THAT HAS A CRITICAL HEIGHT VALUE TO MEET THE MAXIMUM FALL HEIGHT FOR THE EQUIPMENT (REF. ASTM F1487 STANDARD CONSUMER SAFETY PERFORMANCE SPECIFICATION FOR PLAYGROUND EQUIPMENT FOR PUBLIC USE, SECTION 8 CURRENT REVISION). THE SUBSURFACE MUST BE WELL DRAINED. IF THE SOIL DOES NOT DRAIN NATURALLY IT MUST BE TILED OR SLOPED 1/8" TO 1/4" PER FOOT TO A STORM SEWER OR A "TRENCH DRAW".

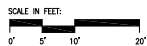
ACCESSIBLE/PROTECTIVE  
LOOSE FILL MATERIAL  
(ENGINEERED WOOD FIBER SUGGESTED)  
8634 SF

IT IS THE MANUFACTURER'S OPINION AND INTENT THAT THE LAYOUT OF THESE COMPONENTS CONFORM WITH THE U.S. CONSUMER PRODUCT SAFETY COMMISSION'S (CPSC) "HANDBOOK FOR PUBLIC PLAYGROUND SAFETY".

DESIGNED BY:

COPYRIGHT: 03-14-2022  
LANDSCAPE STRUCTURES, INC.  
601 7th STREET SOUTH - P.O. BOX 196  
DELANO, MINNESOTA 55328  
PH 1-800-328-0035 FAX 1-763-972-6091

Date Previous Drawing # Initials



Dos Rios Playground  
Option B  
Grand Junction, CO



SYSTEM TYPE:  
Freestanding

DRAWING #:  
01





## C. Strategy and Implementation Plan

### Overview of Project Design and Elements

# Alternate Proposal: Option B - Alpha Tower Theme



## Alternate Proposal: Option B - Alpha Tower Theme

### Alpha Link Towers for Ages 5-12

**Alpha Link Towers** let kids experience heights in a safe way. Multiple climbers offer different routes up the outsides of both towers to the 4' and 8' level. Kids can climb all the way to the fully enclosed 12' deck on the inside of the largest tower. Two of our most fun slides – the Double Swoosh Slide and the WhooshWinder Slide – bring them back down to earth.



Click [HERE](#) to see a detailed look at the Alpha Link Tower design!



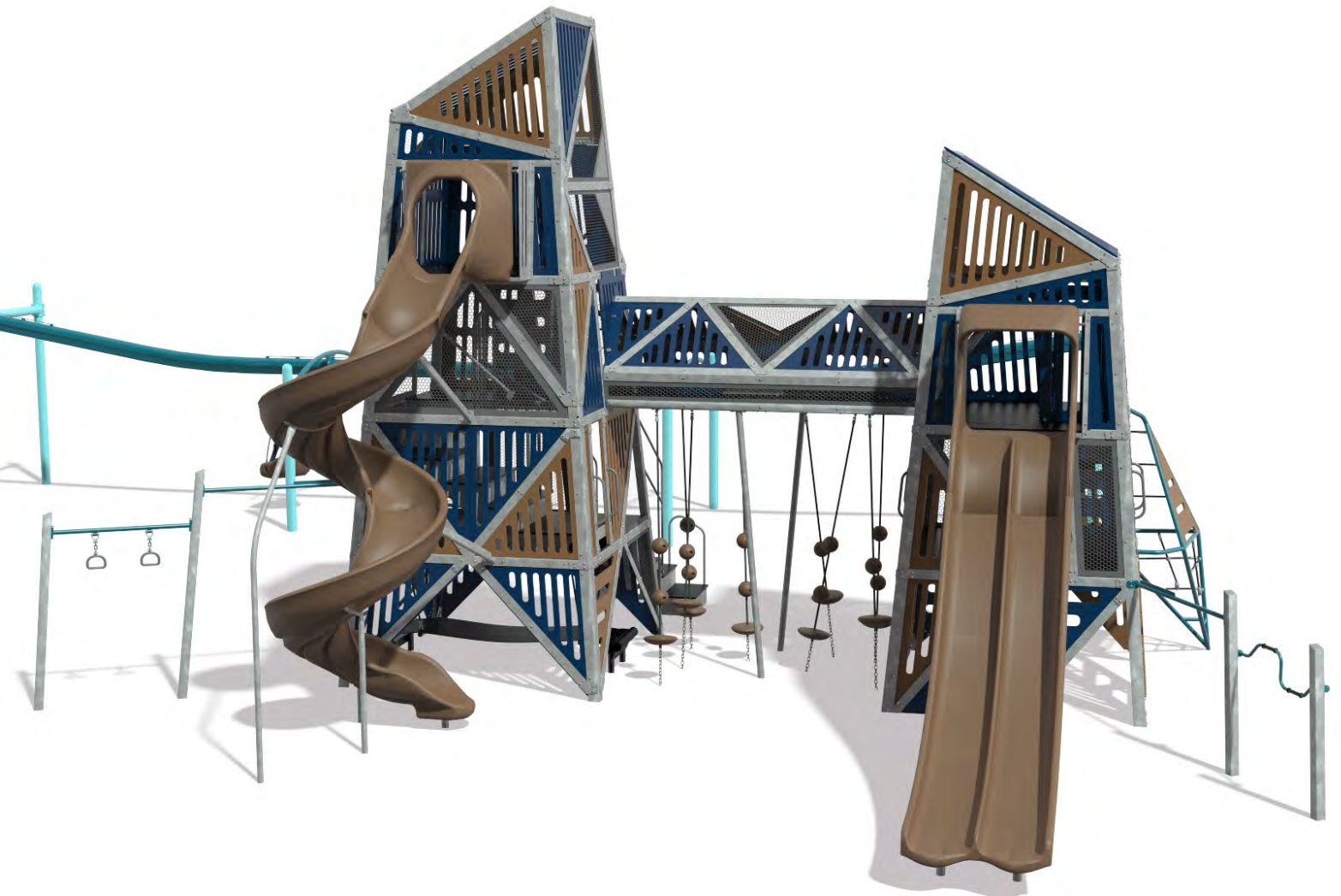
## C. Strategy and Implementation Plan

### Overview of Project Design and Elements

# Alternate Proposal: Option B - Alpha Tower Theme

## Alpha Link Towers for Ages 5-12

The funky geometric design of the playstructure and contemporary patina of the Hot Dip Galvanized (HDG) steel frame will turn any playspace into a destination playground. Kids will love finding all the unique lookout spots along with the shaded spaces inside for relaxing and socializing. Parents and supervisors will appreciate the perforated and slotted panels that offer clear sightlines.



Double towers with overall height of 20 feet and towers connected at the 8' deck level by an elevated crawl tunnel



## C. Strategy and Implementation Plan

### Overview of Project Design and Elements

# Alternate Proposal: Option B - Alpha Tower Theme

## Alpha Link Towers for Ages 5-12



### Developmental Benefits

#### **Sensory**

Proprioception, Tactile, Vestibular+, Visual

#### **Motor Skills**

Agility, Balance, Coordination, Core Body Strength, Endurance, Eye-Hand Coordination, Flexibility, Lower Body Strength, Motor Planning, Upper Body Strength

#### **Cognitive Skills**

Problem Solving, Strategic Thinking

#### **Social/Emotional Skills**

Cooperation, Imaginative Play, Social Skill Development



## C. Strategy and Implementation Plan

### Overview of Project Design and Elements

## Alternate Proposal: Option B - Alpha Tower Theme

### Alpha Link Towers for Ages 5-12



The combination of towers provides children with multiple ways to climb into the world of their imagination and be rewarded with multiple views of the world beyond them!





## Alternate Proposal: Option B - Alpha Tower Theme

### Smart Play Cube for Ages 2-5

The Smart Play Cube has 14 activities addressing developmentally-appropriate skills: Steel Drum, Nesting Puzzle, Slotted Puzzle, Puzzle Panel, Manipulative Arrow Panel, Slide, Table Panel, Activity Table with Bench, Mirror Panel, Magnet Stack, Arch Climber, Ladder Rail Disk, Steering Wheel, and a Crawl-through Panel.



Click [HERE](#) to see the Smart Play Cube in action!

## C. Strategy and Implementation Plan

### Overview of Project Design and Elements

# Alternate Proposal: Option B - Alpha Tower Theme

## Smart Play Cube for Ages 2-5



The Smart Play Cube will keep children engaged for hours as they explore through play, developing their mind and social skills.





## C. Strategy and Implementation Plan

### Overview of Project Design and Elements

## Alternate Proposal: Option B - Alpha Tower Theme

### Eclipse Net Climber

The Eclipse Net Climber is an exclusive Landscape Structures design. It challenges children to constantly respond to their own movements as well as the movement of other children climbing on the net. This improves their balance, flexibility and motor coordination. Children are challenged to climb in an infinite number of ways as they move all around this unique net climber.



With the tensioning system located in the cast-aluminum ball connectors and only four footers required, installation and maintenance is hassle-free! It

### Features

- Climbing cables are abrasion resistant, color stable, durable and vandal resistant
- Polyester-wrapped, steel-core climbing cables
- Tensioning system in ball connectors

Click [HERE](#)  
to see the **Eclipse Net  
Climber** in action!

## C. Strategy and Implementation Plan

### Overview of Project Design and Elements

## Alternate Proposal: Option 2 - Alpha Tower

### ZipKrooz Assisted 50'

Kids of all abilities can experience the thrill of flying with ZipKrooz! The molded bucket seat with lock-in-place harness provides stability and security for kids with limited core strength. ZipKrooz was engineered for exceptional quality, comfort and safety. Kids are lining up for ZipKrooz!



Click [HERE](#)  
to see the **ZipKrooz**  
**Assisted 50'** in action!



## C. Strategy and Implementation Plan

### Overview of Project Design and Elements

## Alternate Proposal: Option 2 - Alpha Tower

### ZipKrooz Assisted 50'

#### Features

- Rotationally molded bucket seat with lock-in-place harness keeps kids with limited upper- or lower-body strength secure
- 4-wheel trolley glides easily to each end and back; will never jolt or stop mid-glide
- 2-way ride
- Elevation built in; can be installed on level ground with no embankments needed
- Inclined ends help rider gain momentum at the beginning, and slow down at the end





## C. Strategy and Implementation Plan

### Overview of Project Design and Elements

# Alternate Proposal: Option C - Riverscape Clouds Theme

Rocky Mountain Recreation is pleased to present a third proposal customized on complementing the river and natural landscape seen in Grand Junction.

Topped with the 4-Layer Cloud Roof, this 10' PlayOdyssey Tower structure provides kids an adventurous voyage of new proportions. Explorers **ages 5-12** journey to the top for the best view, finding treasured play and activities all along the way, and then coast down the never-ending slides.

For **ages 2-5** we have selected a PlayBooster structure packed full of play elements and accented with recycled wood-grain lumber panels.

# \$375,421.34



**Hillscape Wave Climbers**

Rocky Mountain Recreation also carefully selected each freestanding play element to accompany the play structures theme.

**Spinning elements: 1 ReviWheel Spinner, 1 Curva Spinners**

**5-12 Age 3-Bay Swing Set:**  
1 ADA Friendship Swing, 4 Belt Seats

**2-5 Age Oodle Swing Frame with 2 Full Bucket Seats**

**2 Canoe DigiFused riders**

# RIVERSCAPE CLOUD THEME



Play Structure  
Age 5-12

Canoe  
DigiRiders

Play Structure  
Age 2-5

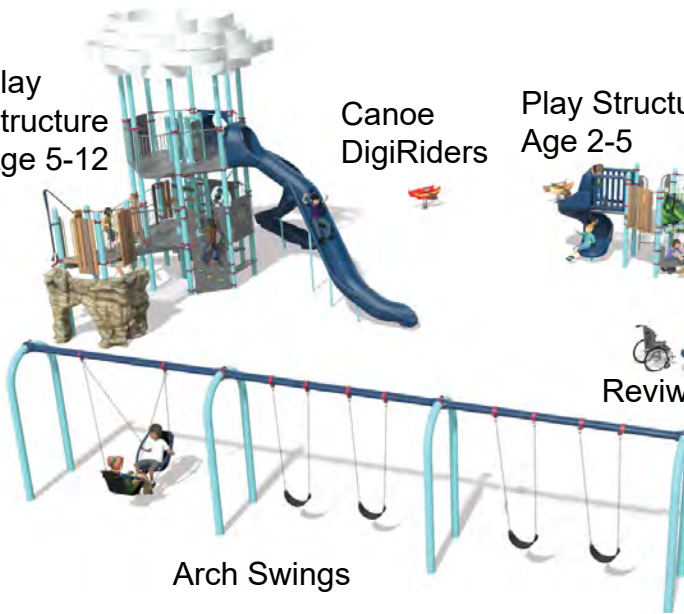


Hillscapes

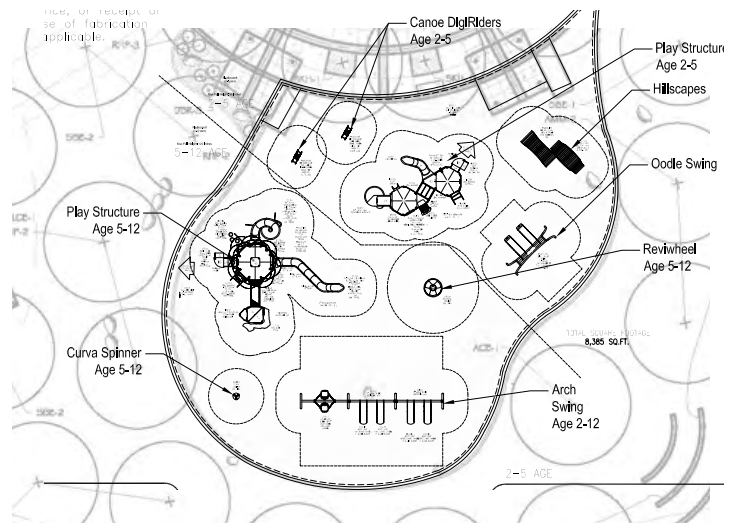
Curva

Reviwheel

Tot Swings



Arch Swings



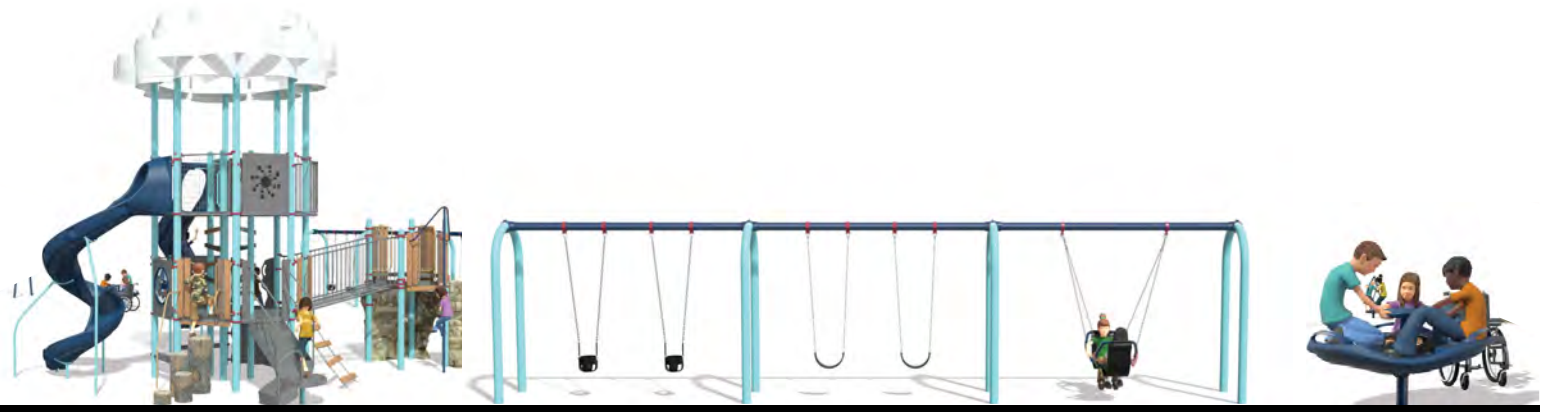
Dos Rios Playground - Option C

Grand Junction, CO





Playground Cross Section



Play Structure Age 5-12  
Play Components Age 5-12

Arch Swings

Reviwheel



Canoe DigiRiders  
Play Components Age 2-5

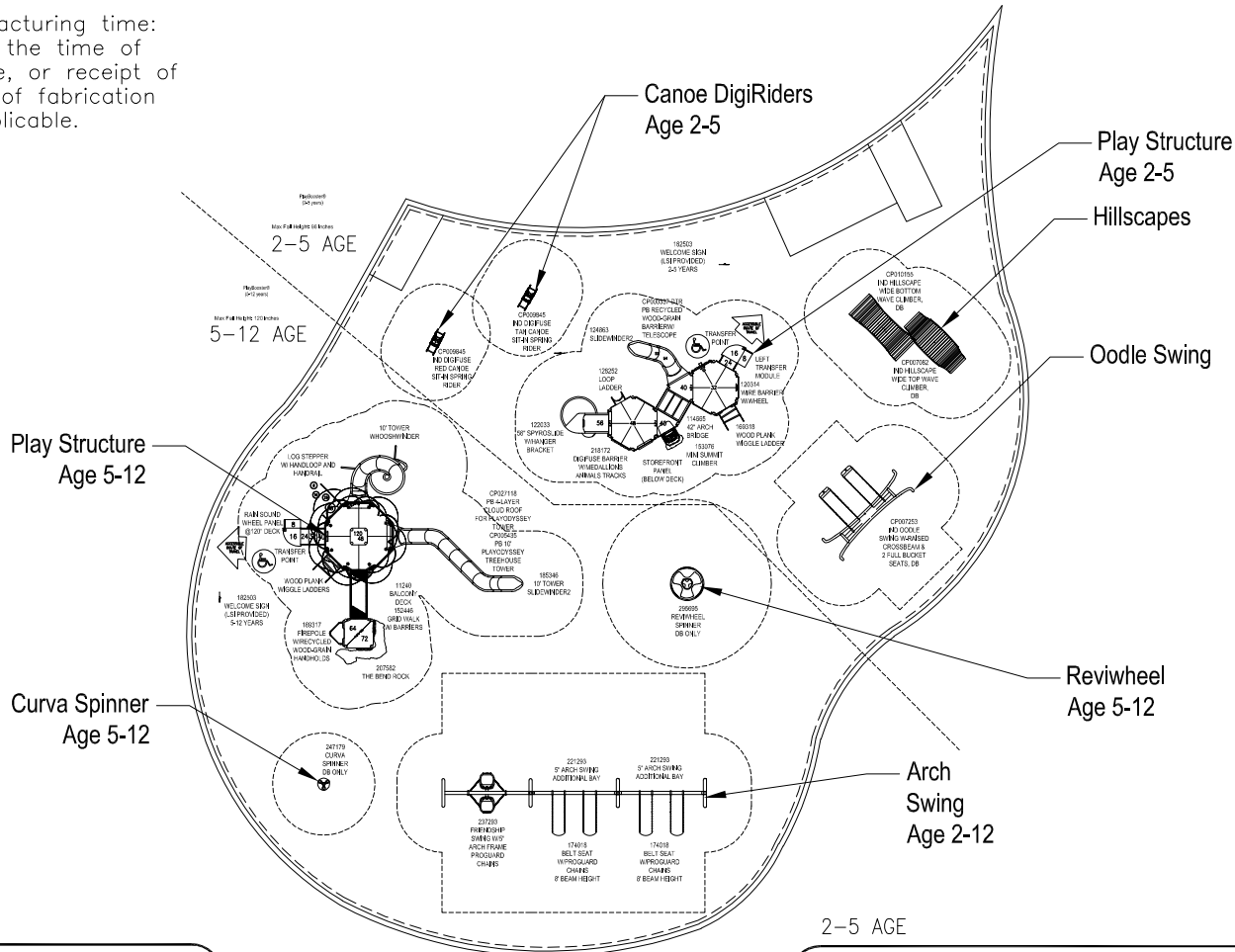
Play Structure 2-5

Tot Swing

“River” Hillscapes



Estimated manufacturing time:  
10 weeks from the time of  
LSI order acceptance, or receipt of  
SkyWays release of fabrication  
form if applicable.

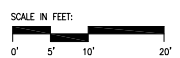


5-12 AGE

TOTAL ELEVATED PLAY COMPONENTS	12		
TOTAL ELEVATED COMPONENTS ACCESSIBLE BY RAMP	0	REQUIRED	0
TOTAL ELEVATED COMPONENTS ACCESSIBLE BY TRANSFER	8	REQUIRED	6
TOTAL ACCESSIBLE GROUND LEVEL COMPONENTS SHOWN	8	REQUIRED	4
TOTAL DIFFERENT TYPES OF GROUND LEVEL COMPONENTS	4	REQUIRED	4

2-5 AGE

TOTAL ELEVATED PLAY COMPONENTS	9		
TOTAL ELEVATED COMPONENTS ACCESSIBLE BY RAMP	0	REQUIRED	0
TOTAL ELEVATED COMPONENTS ACCESSIBLE BY TRANSFER	9	REQUIRED	5
TOTAL ACCESSIBLE GROUND LEVEL COMPONENTS SHOWN	6	REQUIRED	3
TOTAL DIFFERENT TYPES OF GROUND LEVEL COMPONENTS	4	REQUIRED	4



Dos Rios  
Playground  
Grand Junction, CO

Rocky Mountain  
Recreation Inc.  
Amanda Castelli

SYSTEM TYPE:  
PlayBooster  
  
DRAWING #:  
1163228-01-03

**landscape structures**

The play components identified on this plan are IPEMA certified. (Unless model number is preceded with \*) The use and layout of these components conform to the requirements of ASTM F1487. To verify product certification, visit [www.ipema.org](http://www.ipema.org).

THIS PLAY AREA & PLAY EQUIPMENT IS DESIGNED FOR AGES 2-12 YEARS UNLESS OTHERWISE NOTED ON PLAN.

IT IS THE MANUFACTURERS OPINION THAT THIS PLAY AREA DOES CONFORM TO THE A.D.A. ACCESSIBILITY STANDARDS, ASSUMING AN ACCESSIBLE PROTECTIVE SURFACING IS PROVIDED, AS INDICATED, OR WITHIN THE ENTIRE USE ZONE.

THIS CONCEPTUAL PLAN WAS BASED ON INFORMATION AVAILABLE TO US, PRIOR TO CONSTRUCTION. DETAILED SITE INFORMATION INCLUDING SITE DIMENSIONS, TOPOGRAPHY, EXISTING UTILITIES, SOIL CONDITIONS, AND DRAINAGE SOLUTIONS SHOULD BE OBTAINED, EVALUATED, & UTILIZED IN THE FINAL DESIGN. PLEASE VERIFY ALL DIMENSIONS OF PLAY AREA, SIZE, ORIENTATION, AND LOCATION OF ALL EXISTING UTILITIES, EQUIPMENT, AND SITE FURNISHINGS PRIOR TO ORDERING. SLIDES SHOULD NOT FACE THE HOT AFTERNOON SUN.

CHOOSE A PROTECTIVE SURFACING MATERIAL THAT HAS A CRITICAL HEIGHT VALUE TO MEET THE MAXIMUM FALL HEIGHT FOR THE EQUIPMENT (REF. ASTM F1487 STANDARD CONSUMER SAFETY PERFORMANCE SPECIFICATION FOR PLAYGROUND EQUIPMENT FOR PUBLIC USE, SECTION 8 CURRENT REVISION). THE SUBSURFACE MUST BE WELL DRAINED IF THE SOIL DOES NOT DRAIN NATURALLY IT MUST BE TILED OR SLOPED 1/8" TO 1/4" PER FOOT TO A STORM SEWER OR A "FRENCH DRAIN".

ACCESSIBLE/PROTECTIVE  
LOOSE FILL MATERIAL  
(ENGINEERED WOOD FIBER SUGGESTED)  
8,385 SQ.FT.

DESIGNED BY:  
KAA  
COPYRIGHT: 4/13/22  
LANDSCAPE STRUCTURES, INC.  
601 7th STREET SOUTH - P.O. BOX 198  
BEAUMONT, MINNESOTA 55008  
PH: 1-800-328-0035 FAX: 1-763-972-6091

4/8/22	1163228-01-02	KAA
3/25/22	1163228-01-01	KAA
Date	Previous Drawing #	Initials

Overview of Project Design and Elements

# Alternate Proposal: Option C - Riverscape Clouds Theme



Dos Rios Playground

1163228-01-03-07 • 04.13.2022



Dos Rios Playground

1163228-01-03-01 • 04.13.2022



## Alternate Proposal: Option C - Riverscape Clouds Theme

### PlayOdyssey with Cloud Roof for Ages 5-12

This 10' PlayOdyssey Tower with 4-Layer Cloud Roof custom designed structure includes:

2 large slides - the SlideWinder2 and WhooshWinder Slide, Rain Sound Wheel, Optigear, and Marble Panels, slidable Firepole, and the Bend Rock climber





## Alternate Proposal: Option C - Riverscape Clouds Theme

### PlayOdyssey with Cloud Roof for Ages 5-12



Click [HERE](#) to see a  
*PlayOdyssey Tower in  
action!*

## C. Strategy and Implementation Plan

### Overview of Project Design and Elements

# Alternate Proposal: Option 3 - Riverscape in the Clouds



## C. Strategy and Implementation Plan

### Overview of Project Design and Elements

# Alternate Proposal: Option 3 - Riverscape in the Clouds

## PlayBooster for Ages 2-5

This structure includes a Slidewinder2 and SpyroSlide for all the sliding action, Mini Summit Climber and Wood Plank Wiggle Ladder for climbing thrills, and a DigiFuse Barrier Panel with "Seek and Find" Medallions located on posts and panels provide extra fun and challenge. It also includes 2 Hillscape Wave Climbers and to spark kids imagination





## C. Strategy and Implementation Plan

### Overview of Project Design and Elements

# Alternate Proposal: Option 3 - Riverscape in the Clouds

## PlayBooster for Ages 2-5



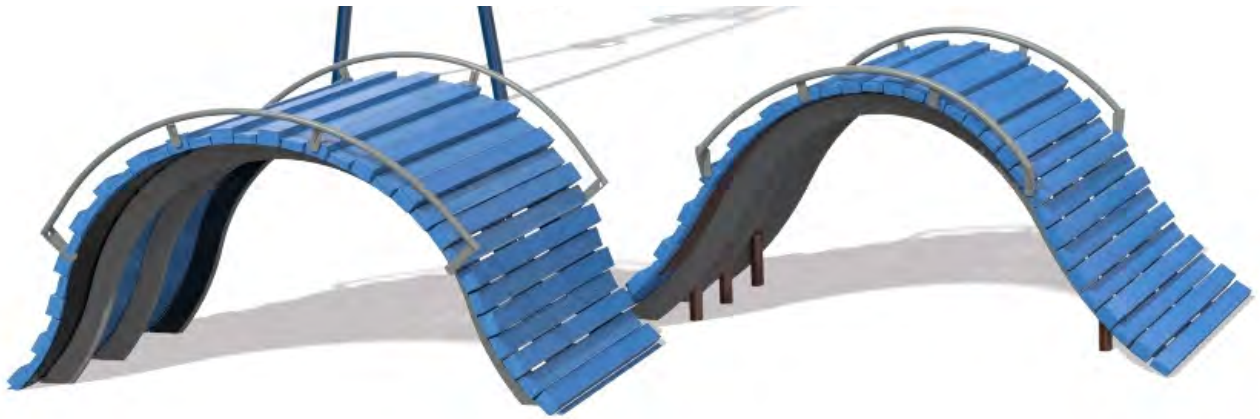
## C. Strategy and Implementation Plan

### Overview of Project Design and Elements

# Alternate Proposal: Option 3 - Riverscape in the Clouds

## Custom Freestanding Play

Hillscape Wave Climbers



Custom Canoe DigiRiders





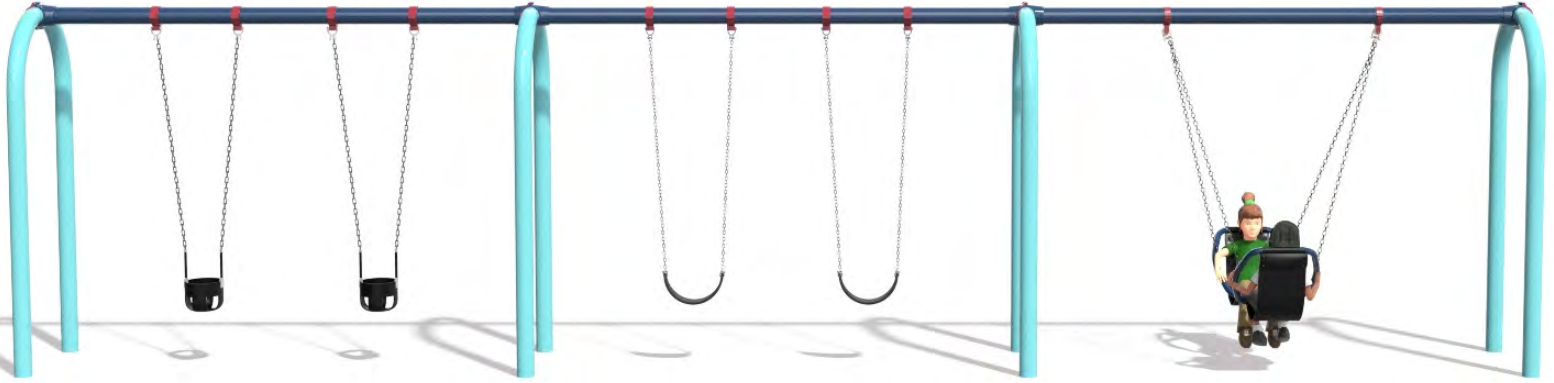
## C. Strategy and Implementation Plan

### Overview of Project Design and Elements

# Alternate Proposal: Option 3 - Riverscape in the Clouds

## Freestanding Play

**3-Bay Arch Swing set with 2 Full Bucket Seats, 2 Belt Seats, and a Friendship Swing**



This multi-user commercial playground swing is one size fits all, from two kids to a multigenerational family. The **Friendship Swing** is a great way for siblings, parents and grandparents to enjoy time together.



Overview of Project Design and Elements

Alternate Proposal: Option C - Riverscape Clouds Theme



Dos Rios Playground

1163228-01-03-04 • 04.13.2022



©2022 Landscape Structures. All Rights Reserved.

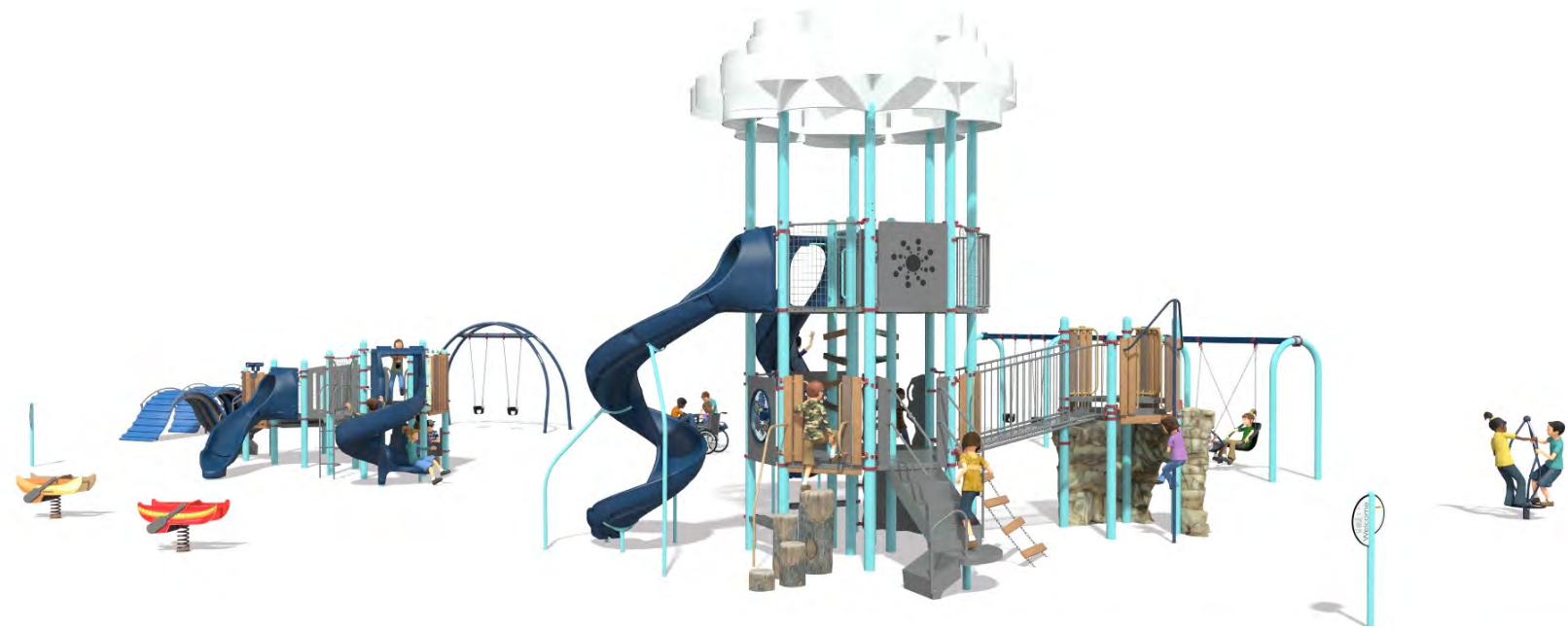




## C. Strategy and Implementation Plan

### Overview of Project Design and Elements

# Alternate Proposal: Option C - Riverscape Clouds Theme





## C. Strategy and Implementation Plan

# Sub-contracted Suppliers

## Playground Install

### **Redwoods Precision Landscaping**

720-384-5253

10630 Pronghorn Place

Franktown, CO 80116

Rocky Mountain Recreation has a longstanding relationship with Redwood's Precision Landscaping to install playground equipment. Scott and Heather Humphrey of Redwood's have extensive experience and strong attention to detail. They will ensure that the new equipment will be installed to specifications, within the proposed timeline. They are a certified Landscape Structures playground equipment installer and CPSI. Rocky Mountain Recreation remain the primary contact throughout the duration of the project.

## Contractors Warranty

A 1 year workmanship warranty will be honored and letter provided upon project completion.

# Color Selection

From subtle statements to bold impacts, we have the colors to suit your space! We offer over 60 distinct color palettes and hundreds of playground color combinations that come together perfectly to match your play personality. These palettes are inspired by nature, science, art and everything in between to make your playground stand apart from the others. Every color meets our rigorous standards for fade-resistance, gloss retention and durability.

Below is our industry-leading variety of super durable ProShield (powder-coated metal) colors.

Click [HERE](#) to access our digital color brochure to view the full color offerings by material and curated color palettes we have available.





## Preliminary Construction Schedule

The Rocky Mountain Recreation team provides superior customer service through project completion. Design possibilities are numerous and we offer no-cost redesigns post-award within proposed budget. We offer a wide range of color choices that can be customized to your playground design. Our current lead time on standard equipment is an industry leading 8-10 weeks with a slight increase during the summer months; actual lead time on equipment will be provided upon ordering through Landscape Structures, as the market continues to fluctuate based on commodity and labor shortages.

### **Proposed project schedule:**

- 5/19/2022 - Project Awarded to RMR
- 5/19-24/2022 - Fine tune designs and finalize color selection
- 5/27/2022 - Contract executed and order placed
- 5/27/2022 - Manufacturing lead time begins
- 9/26/2022 - Onsite prep work and installation begin
- 10/14/2022 - Project is completed and inspected

\*\*Schedule based on maximum anticipated lead time and latest window to complete installation before deadline of 10/14. Assigned ship date at time of order may allow us to complete project sooner.

With the uncertainty and volatility in the market we encourage ordering at earliest opportunity to guarantee timelines.

### **Onsite installation schedule:**

Construction is estimated to take 2 weeks. The following is a breakout of the installation phases estimated to begin on agreed upon date.

- Day 1: Move EWF, layout and transit footings.
- Day 2: Play equipment is delivered to site and installation begins.
- Playground installation should take about 2 weeks, City can order EWF week of 10th of October and playground is ready to enjoy!



# D. References

## City of Greeley

Clint Anders, Park Planner

970-336-4180

clint.anders@greeleygov.com

## Aven's Village at Island Grove Regional Park

Fully inclusive Western theme playground

Poured-in-place surfacing

Approximate budget of \$900,000

Located at 501 N 14th Avenue, Greeley, CO 80631

Project Completed: Summer of 2016

Designed in cooperation with Shane's Inspiration



*Coolest playground ever. Wheelchair accessible and disability inclusive. Has Braille and sign language charts for kids to learn from. Many learning activities.*

*-GoogleReview user Danielle Baker*

# D. References

## City of Denver Parks and Recreation

Heather Runkel, Park Planner

720-232-7675

Heather.Runkel@DenverGov.org

Microphone and Radio Themed Tower Structure

Approximate budget of \$1.5 million

Colfax & Knox Ct., Denver

Project Completed: June 2018

Landscape Architect: Laurel Raines & Gretchen Wilson, Dig Studio



*The park is such a beautiful and nice paradise for kids to explore. I would say even adults can have a great time there too. It's a pretty park for all ages! Love it!*

- GoogleReview user Xingju Hang



# D. References

## City of Denver Parks and Recreation

Heather Runkel, Park Planner

720-232-7675

Heather.Runkel@DenverGov.org

Castle and Village Themed Playground

Approximate budget of \$500,000

City Park, Denver - Approx York & 23rd

Project Completed: October 2021

Landscape Architect: Rachel Scarborough - Mundus Bishop



*Amazing park with so many activities and structures to play on! Along with a wheelchair swing! With all the spacious areas with a little lake you would never think this park was in Denver!*

- GoogleReview user Heidi Gohl



# D. References

## City of Fort Collins

Jill Wuertz, Park Planner

970.416.2062

jwuertz@fcgov.com

Custom playground tower and associated play structures

Approximate budget: \$280,000

Location: 207 Peterson Street, Fort Collins, CO

Project Completed: Summer 2020



*Such a cool park for the kids! The equipment was awesome and clean, the floor of the playground feels great on the feet especially after hiking!*

*- GoogleReview user*



# D. References

## Foothills Park and Recreation

Sean Kitners, Park Planner

303.409.2303

seank@fhprd.org

## Clement Park

Fully inclusive performing arts themed playground

Approximate budget of \$1,000,000 (Play equipment, installation and surfacing)

Located at Bowles & Wadsworth in Littleton, CO 80123

Project Completed: Summer 2019

Landscape Architect: Kelley Savage, Context Workshop



*One of the best playground structures (5-12 year-olds) I've ever seen.*

- GoogleReview user Tyler Meldrum

## D. References



PO Box 620411  
Littleton CO 80162  
Phone: 303.783.1452  
Toll Free: 800.636.0199  
[www.rmrec.com](http://www.rmrec.com)

## ROCKY MOUNTAIN RECREATION, INC.

### COMPLETED PROJECTS / REFERENCES

#### **City of Fort Collins – Library Park**

Jill Wuertz, Park Planner

970.416.2062

[jwuertz@fcgov.com](mailto:jwuertz@fcgov.com)

Custom playground tower and associated play structures

Approximate budget of \$280,000

Located at 207 Peterson St., Fort Collins, CO

Project Completed: Summer 2020

#### **City of Greeley - Greeley Youth Sports Complex**

Sarah Boyd, Park Planner

970.336.4180

[sarah.boyd@greeleygov.com](mailto:sarah.boyd@greeleygov.com)

Baseball themed playground structures and SkyWays by LSI custom shade over playground and ballfield bleachers, synthetic turf surfacing, demolition, excavation, grading, layout, concrete curbing and flatwork, landscape reclamation

Approximate budget of \$800,000

Located at 1850 65th Ave, Greeley, CO

Project Completed: Spring 2020

#### **City of Thornton – HealthBeat Fitness Zone**

Diane Van Fossen, Deputy Director

303.255.7843

[diane.vanfossen@ThorntonCO.gov](mailto:diane.vanfossen@ThorntonCO.gov)

HealthBeat Fitness components, associated site work (incl. curb) and landscape reclamation

Approximate budget of \$50,000

Located at 84<sup>th</sup> & Huron in Thornton

Project Completed: Spring 2020

#### **Foothills Parks and Recreation – Clement Park**

Sean Kitners, Park Planner (Context Workshop LA)

303.409.2303

[seank@fhprd.org](mailto:seank@fhprd.org)

Fully inclusive performing arts themed playground

Approximate budget of \$800,000

Located at Bowles & Wadsworth in Littleton, CO 80123

Project Completed: Summer 2019





## D. References



PO Box 620411  
Littleton CO 80162  
Phone: 303.783.1452  
Toll Free: 800.636.0199  
[www.rmrec.com](http://www.rmrec.com)

### **Englewood Public Schools – Bishop K-5**

Craig Stoffel, Hord Coplan Macht LA  
303.607.0977  
[cstoffel@hcm2.com](mailto:cstoffel@hcm2.com)  
Intermediate playground structure with poured-in-place surfacing  
Approximate budget of \$250,000  
Located at Dartmouth and Elati in Englewood, CO 80113  
Completed Summer 2019

### **City of Lafayette - Silver Creek Neighborhood Park**

Ben Mazal, Assistant to the Director (Munding Design LA)  
303.661.1306  
[ben.mazal@cityoflafayette.com](mailto:ben.mazal@cityoflafayette.com)  
Farm themed playground equipment  
Approximate budget \$123,000  
Cristo Lane & San Juan Dr. Lafayette, CO 80026  
Project Completed: August 2018

### **Denver Parks and Recreation – Paco Sanchez Park**

Heather Runkel, Park Planner (Dig Studio LA)  
720.913.0629  
[heather.runkel@denvergov.org](mailto:heather.runkel@denvergov.org)  
Fully custom Microphone tower structure and bridge  
Approximate budget of \$1,500,000  
Located at 1290 Knox Ct, Denver, CO 80204  
Project Completed: Summer 2018

### **City of Thornton – Northern Lights Ballfield Complex**

Suzann Cox, Parks and Open Space Project Manager  
303.255.7834  
[suzann.cox@ThorntonCO.gov](mailto:suzann.cox@ThorntonCO.gov)  
Fully inclusive, baseball themed playground with integrated fabric shade and poured-in-place surfacing over concrete base, associated landscape and irrigation work/repairs  
Approximate budget of \$500,000  
Located at 4500 E 122<sup>nd</sup> Ave Thornton, CO 80241  
Project Completed: Summer 2017





ALL PURCHASE ORDERS, CONTRACTS, AND  
CHECKS TO BE MADE OUT TO:  
ROCKY MOUNTAIN RECREATION INC.  
P.O. BOX 620411  
LITTLETON, CO 80162  
**303-783-1452 800-636-0199**

# PROPOSAL

April 15, 2022  
DATE

**CONTACT:** Duane Hoff Jr.  
**PHONE:** 970-244-1545  
**EMAIL:** [duaneh@gjcity.org](mailto:duaneh@gjcity.org)

Grand Junction, CO  
F.O.B.

FREIGHT  Prepaid  Collect

**SHIP TO:**  
750 Calle Rios Dr.  
Grand Junction, CO 81501

50% Down, Remaining Balance Net 30;  
1.5% Monthly Finance Charge Thereafter  
TERMS (Subject to Credit Approval by RMR)

**BILL TO:** City of Grand Junction  
1340 Gunnison Ave  
Grand Junction, CO 81501

Apx 10-12 Weeks. A.R.O  
SHIPPING TIME

5/15/2022  
PROPOSAL GOOD UNTIL

**We are pleased to submit this proposal to supply the following items:**

QTY	ITEM NO.	DESCRIPTION	UNIT WT	UNIT PRICE	WEIGHT	EXTENDED AMT
		 <b>Option A - Hedra Hive Theme</b>				
1	265929A	Hedra Scout Playstructure w/Polycarbonate & Bamboo for Ages 2-5		\$74,676.00		\$ 74,676.00
1	265928I	Hedra Playstructure w/ Polycarbonate & Bamboo for Ages 5-12		\$99,571.00		\$ 99,571.00
1	247179A	Curva Spinner		\$2,168.00		\$ 2,168.00
1	295694A	ReviWhirl Spinner		\$5,244.00		\$ 5,244.00
1	152179A	Saddle Spinner		\$1,186.00		\$ 1,186.00
1	233059B	DigiRider Bear		\$1,585.00		\$ 1,585.00
1	233057B	DigiRider Butterfly		\$1,585.00		\$ 1,585.00
1	177340A+	Single Bay 2" Arch Swing Frame w/ 2 Full Tot Bucket Seats and Chains		\$2,913.00		\$ 2,913.00
1	221292A	3-Bay 5" Arch Swing Frame w/ 4 Belt Swings and 2 ADA Molded Bucket Seats		\$9,948.00		\$ 9,948.00
1	BOND	<b>Insurance &amp; Bond</b> Payment & Performance Bond, 3% Rate		\$9,051.00		\$ 9,051.00
1	P & L	Professional Liability Insurance**		\$5,000.00		\$ 5,000.00

**Comments:** *Please provide a copy of your tax exempt certificate to avoid applicable charges. Thank you!!*

*\*\*Will be obtained once project awarded.*

SUBTOTAL MATERIALS	\$212,927.00
INSTALLATION	\$73,800.00
FREIGHT	\$13,273.00
SALES TAX *	Exempt
<b>TOTAL</b>	<b>\$300,000.00</b>

ACCEPTED BY CUSTOMER \_\_\_\_\_ DATE \_\_\_\_\_

PRINT NAME \_\_\_\_\_

Caroline Owen 4/15/22

PROPOSED BY RMR REPRESENTATIVE \_\_\_\_\_ DATE \_\_\_\_\_

Caroline Owen  
PRINT NAME \_\_\_\_\_



## E. Fee Proposal

Alternate Proposal: Option A - Hedra Hive Theme

### SECTION 7.0: SOLICITATION RESPONSE FORM RFP-5035-22-KH Design/Build Destination Playground Equipment and Installation for Dos Rios Park

*Offeror must submit entire Form completed, dated and signed.*

- 1) All-inclusive Guaranteed Maximum Price to design, provide, and install playground equipment for Dos Rios Park, as per the solicitation documents:

Guaranteed Maximum Price \$ 300,000.00

WRITTEN: Three hundred thousand and 00/100 dollars.

-----  
*The Owner reserves the right to accept any portion of the services to be performed at its discretion*  
-----

The undersigned has thoroughly examined the entire Request for Proposals and therefore submits the proposal and schedule of fees and services attached hereto.

This offer is Contractor and irrevocable for sixty (60) days after the time and date set for receipt of proposals.

The undersigned Offeror agrees to provide services and products in accordance with the terms and conditions contained in this Request for Proposal and as described in the Offeror's proposal attached hereto; as accepted by the Owner.

Prices in the proposal have not knowingly been disclosed with another provider and will not be prior to award.

- Prices in this proposal have been arrived at independently, without consultation, communication or agreement for the purpose of restricting competition.
- No attempt has been made nor will be to induce any other person or Contractor to submit a proposal for the purpose of restricting competition.
- The individual signing this proposal certifies they are a legal agent of the offeror, authorized to represent the offeror and is legally responsible for the offer with regard to supporting documentation and prices provided.
- Direct purchases by the City of Grand Junction are tax exempt from Colorado Sales or Use Tax. Tax exempt No. 98-903544. The undersigned certifies that no Federal, State, County or Municipal tax will be added to the above quoted prices.
- City of Grand Junction payment terms shall be Net 30 days.
- Prompt payment discount of n/a percent of the net dollar will be offered to the Owner if the invoice is paid within n/a days after the receipt of the invoice. The Owner reserves the right to take into account any such discounts when determining the bid award that are no less than Net 10 days.

RECEIPT OF ADDENDA: the undersigned Contractor acknowledges receipt of Addenda to the Solicitation, Specifications, and other Contract Documents. State number of Addenda received: 2

It is the responsibility of the Proposer to ensure all Addenda have been received and acknowledged.

Rocky Mountain Recreation

Company Name – (Typed or Printed)

Evan Baer, COO

Authorized Agent Signature

PO Box 620411

Address of Offeror

Littleton, Colorado 80162

City, State, and Zip Code

Evan Baer

Authorized Agent – (Typed or Printed)

303.783.1452

Phone Number

info@rmrec.com

E-mail Address of Agent

April 15, 2022

Date



ALL PURCHASE ORDERS, CONTRACTS, AND  
CHECKS TO BE MADE OUT TO:  
ROCKY MOUNTAIN RECREATION INC.  
P.O. BOX 620411  
LITTLETON, CO 80162  
**303-783-1452 800-636-0199**

# PROPOSAL

April 15, 2022

DATE

**CONTACT:** Duane Hoff Jr.  
**PHONE:** 970-244-1545  
**EMAIL:** [duaneh@gjcity.org](mailto:duaneh@gjcity.org)

Grand Junction, CO  
F.O.B.

FREIGHT  Prepaid  Collect

**SHIP TO:**  
750 Calle Rios Dr.  
Grand Junction, CO 81501

50% Down, Remaining Balance Net 30;  
1.5% Monthly Finance Charge Thereafter  
TERMS (Subject to Credit Approval by RMR)

**BILL TO:** City of Grand Junction  
1340 Gunnison Ave  
Grand Junction, CO 81501

Apx 10-12 Weeks. A.R.O  
SHIPPING TIME

5/15/2022  
PROPOSAL GOOD UNTIL

**We are pleased to submit this proposal to supply the following items:**

QTY	ITEM NO.	DESCRIPTION	UNIT WT	UNIT PRICE	WEIGHT	EXTENDED AMT
		 <b>landscape structures™ landscape structures™ landscape structures™</b> <b>Additional Proposal: Option B - Alpha Tower Theme</b>				
1	234516A	Alpha Link Towers Playstrucutre for Ages 5-12		\$121,695.00		\$ 121,695.00
1	205160A	SmartPlay Cube Playstrucutre for Ages 2-5		\$17,377.00		\$ 17,377.00
1	249010A	Eclipse Net Climber		\$26,817.00		\$ 26,817.00
1	196212B	ZipKrooz Assisted 50'		\$14,899.00		\$ 14,899.00
1	221292A+	2-Bay 5" Arch Swing Frame w/ 2 Belt Swings and 2 Full Bucket Seats		\$6,452.00		\$ 6,452.00
1	237296A	1-Bay Single Post Frame w/		\$3,748.00		\$ 3,748.00
2	247179A	Curva Spinner		\$2,168.00		\$ 4,336.00
1	233059B	DigiRider Bear		\$1,585.00		\$ 1,585.00
1	152179A	Saddle Spinner		\$1,186.00		\$ 1,186.00
		<b>Insurance &amp; Bond</b>				
1	BOND	Payment & Performance Bond, 3% Rate		\$9,015.00		\$ 9,015.00
1	P & L	Professional Liability Insurance**		\$5,000.00		\$ 5,000.00

**Comments:** *Please provide a copy of your tax exempt certificate to avoid applicable charges. Thank you!! \*\**

*\*\*Will be obtained once project awarded.*

ACCEPTED BY CUSTOMER \_\_\_\_\_ DATE \_\_\_\_\_

PRINT NAME \_\_\_\_\_

Caroline Owen \_\_\_\_\_ 4/15/22

PROPOSED BY RMR REPRESENTATIVE \_\_\_\_\_ DATE \_\_\_\_\_

Caroline Owen \_\_\_\_\_

PRINT NAME \_\_\_\_\_

SUBTOTAL MATERIALS	\$212,110.00
INSTALLATION	\$74,684.00
FREIGHT	\$13,206.00
SALES TAX	Exempt
<b>TOTAL*</b>	<b>\$300,000.00</b>



## E. Fee Proposal

Alternate Proposal: Option B - Alpha Tower Theme

**SECTION 7.0: SOLICITATION RESPONSE FORM**  
**RFP-5035-22-KH Design/Build Destination Playground Equipment and Installation**  
**for Dos Rios Park**

*Offeror must submit entire Form completed, dated and signed.*

- 1) **All-inclusive Guaranteed Maximum Price to design, provide, and install playground equipment for Dos Rios Park, as per the solicitation documents:**

Guaranteed Maximum Price \$ 300,000.00

WRITTEN: Three hundred thousand and 00/100 dollars.

-----  
*The Owner reserves the right to accept any portion of the services to be performed at its discretion*  
-----

The undersigned has thoroughly examined the entire Request for Proposals and therefore submits the proposal and schedule of fees and services attached hereto.

This offer is Contractor and irrevocable for sixty (60) days after the time and date set for receipt of proposals.

The undersigned Offeror agrees to provide services and products in accordance with the terms and conditions contained in this Request for Proposal and as described in the Offeror's proposal attached hereto; as accepted by the Owner.

Prices in the proposal have not knowingly been disclosed with another provider and will not be prior to award.

- Prices in this proposal have been arrived at independently, without consultation, communication or agreement for the purpose of restricting competition.
- No attempt has been made nor will be to induce any other person or Contractor to submit a proposal for the purpose of restricting competition.
- The individual signing this proposal certifies they are a legal agent of the offeror, authorized to represent the offeror and is legally responsible for the offer with regard to supporting documentation and prices provided.
- Direct purchases by the City of Grand Junction are tax exempt from Colorado Sales or Use Tax. Tax exempt No. 98-903544. The undersigned certifies that no Federal, State, County or Municipal tax will be added to the above quoted prices.
- City of Grand Junction payment terms shall be Net 30 days.
- Prompt payment discount of n/a percent of the net dollar will be offered to the Owner if the invoice is paid within n/a days after the receipt of the invoice. The Owner reserves the right to take into account any such discounts when determining the bid award that are no less than Net 10 days.

RECEIPT OF ADDENDA: the undersigned Contractor acknowledges receipt of Addenda to the Solicitation, Specifications, and other Contract Documents. State number of Addenda received: 2

It is the responsibility of the Proposer to ensure all Addenda have been received and acknowledged.

Rocky Mountain Recreation

Company Name – (Typed or Printed)

Evan Baer, COO

Authorized Agent Signature

PO Box 620411

Address of Offeror

Littleton, Colorado 80162

City, State, and Zip Code

Evan Baer

Authorized Agent – (Typed or Printed)

303.783.1452

Phone Number

info@rmrec.com

E-mail Address of Agent

April 15, 2022

Date



ALL PURCHASE ORDERS, CONTRACTS, AND  
CHECKS TO BE MADE OUT TO:  
ROCKY MOUNTAIN RECREATION INC.  
P.O. BOX 620411  
LITTLETON, CO 80162  
**303-783-1452 800-636-0199**

# PROPOSAL

April 15, 2022  
DATE

**CONTACT:** Duane Hoff Jr.  
**PHONE:** 970-244-1545  
**EMAIL:** [duaneh@gjcity.org](mailto:duaneh@gjcity.org)

Grand Junction, CO  
F.O.B.  Prepaid  Collect  
FREIGHT

**SHIP TO:**  
750 Calle Rios Dr.  
Grand Junction, CO 81501

50% Down, Remaining Balance Net 30;  
1.5% Monthly Finance Charge Thereafter  
TERMS (Subject to Credit Approval by RMR)

**BILL TO:** City of Grand Junction  
1340 Gunnison Ave  
Grand Junction, CO 81501

Apx 10-12 Weeks. A.R.O  
SHIPPING TIME  
5/15/2022  
PROPOSAL GOOD UNTIL

**We are pleased to submit this proposal to supply the following items:**

QTY	ITEM NO.	DESCRIPTION	UNIT WT	UNIT PRICE	WEIGHT	EXTENDED AMT
		 landscape structures™ landscape structures™ landscape structures™ Alternate Proposal: Option C - Riverscape Clouds Theme				
1	CP005435+	10' PlayOdyssey Tower w/ 4-Layer Cloud Roof and Play Elements for Ages 5-12		\$149,787.00		\$ 149,787.00
1	CP005435+	PlayBooster Playstrucutre for Ages 2-5		\$46,614.00		\$ 46,614.00
1	221293A+	5" Arch Swing Frame w/ 2 Belt Swings, 1 Friendship Swing, and 2 Full Bucket Seats		\$10,699.00		\$ 10,699.00
1	CP009846	DigiFuse Red Canoe Spring Rider		\$4,415.00		\$ 4,415.00
1	CP009845	DigiFuse Tan Canoe Spring Rider		\$4,415.00		\$ 4,415.00
1	247179A	Curva Spinner		\$2,168.00		\$ 2,168.00
1	CP000250A	Cedar Hillscapes Wide Top & Bottom Climber		\$22,438.00		\$ 22,438.00
1	CP007253	Oodle Swing Frame w/ Rasied Crossbeam & 2 Full Bucket Seats		\$8,688.00		\$ 8,688.00
1	295695A	Reviwheel Spinner		\$5,769.00		\$ 5,769.00
		<b>Insurance &amp; Bond</b>				
1	BOND	Payment & Performance Bond, 3% Rate		\$10,625.59		\$ 10,625.59
1	P & L	Professional Liability Insurance**		\$5,000.00		\$ 5,000.00

**Comments:** \*Please provide a copy of your tax exempt certificate to avoid applicable charges. Thank you!!  
\*\*Will be obtained once project awarded.

SUBTOTAL MATERIALS	\$270,618.59
INSTALLATION	\$85,897.25
FREIGHT	\$18,905.50
SALES TAX*	Exempt
<b>TOTAL</b>	<b>\$375,421.34</b>

ACCEPTED BY CUSTOMER \_\_\_\_\_ DATE \_\_\_\_\_  
PRINT NAME \_\_\_\_\_  
*Caroline Owen* 4/15/22  
PROPOSED BY RMR REPRESENTATIVE \_\_\_\_\_ DATE \_\_\_\_\_  
Caroline Owen  
PRINT NAME \_\_\_\_\_

# E. Fee Proposal

Alternate Proposal: Option C - Riverscape Clouds Theme

## SECTION 7.0: SOLICITATION RESPONSE FORM RFP-5035-22-KH Design/Build Destination Playground Equipment and Installation for Dos Rios Park

Offeror must submit entire Form completed, dated and signed.

1) All-inclusive Guaranteed Maximum Price to design, provide, and install playground equipment for Dos Rios Park, as per the solicitation documents:

Guaranteed Maximum Price \$ 375,421.34

**WRITTEN: three hundred seventy-five thousand four hundred twenty-one dollars and 34/100 dollars.**

-----  
*The Owner reserves the right to accept any portion of the services to be performed at its discretion*  
-----

The undersigned has thoroughly examined the entire Request for Proposals and therefore submits the proposal and schedule fees and services attached hereto.

This offer is Contractor and irrevocable for sixty (60) days after the time and date set for receipt of proposals.

The undersigned Offeror agrees to provide services and products in accordance with the terms and conditions contained in the Request for Proposal and as described in the Offeror's proposal attached hereto; as accepted by the Owner.

Prices in the proposal have not knowingly been disclosed with another provider and will not be prior to award.

- Prices in this proposal have been arrived at independently, without consultation, communication or agreement for the purpose of restricting competition.
- No attempt has been made nor will be to induce any other person or Contractor to submit a proposal for the purpose of restricting competition.
- The individual signing this proposal certifies they are a legal agent of the offeror, authorized to represent the offeror and is legally responsible for the offer with regard to supporting documentation and prices provided.
- Direct purchases by the City of Grand Junction are tax exempt from Colorado Sales or Use Tax. Tax exempt No. 98-903544. The undersigned certifies that no Federal, State, County or Municipal tax will be added to the above quoted prices.
- City of Grand Junction payment terms shall be Net 30 days.
- Prompt payment discount of n/a percent of the net dollar will be offered to the Owner if the invoice is paid within n/a days after the receipt of the invoice. The Owner reserves the right to take into account any such discounts when determining the bid award that are no less than Net 10 days.

RECEIPT OF ADDENDA: the undersigned Contractor acknowledges receipt of Addenda to the Solicitation, Specifications, and other Contract Documents. State number of Addenda received: 2

It is the responsibility of the Proposer to ensure all Addenda have been received and acknowledged.

Rocky Mountain Recreation

Company Name – (Typed or Printed)

Evan Baer, COO

Authorized Agent Signature

PO Box 620411

Address of Offeror

Littleton, Colorado 80162

City, State, and Zip Code

Evan Baer

Authorized Agent – (Typed or Printed)

303.783.1452

Phone Number

info@rmrec.com

E-mail Address of Agent

April 15, 2022

Date





# AIA Document A310™ – 2010

## Bid Bond

**CONTRACTOR:**

(Name, legal status and address)  
Rocky Mountain Recreation, Inc.

P.O. Box 620411

Littleton, CO 80162

**OWNER:**

(Name, legal status and address)  
City of Grand Junction

333 West Avenue, Building C, Grand Junction, CO 81501

**BOND AMOUNT:**

5% Amount Bid

**PROJECT:**

(Name, location or address, and Project number, if any)

Design/Build Destination Playground Equipment and Installation for Dos Rios Park

RFP-5035-22-KH

The Contractor and Surety are bound to the Owner in the amount set forth above, for the payment of which the Contractor and Surety bind themselves, their heirs, executors, administrators, successors and assigns, jointly and severally, as provided herein. The conditions of this Bond are such that if the Owner accepts the bid of the Contractor within the time specified in the bid documents, or within such time period as may be agreed to by the Owner and Contractor, and the Contractor either (1) enters into a contract with the Owner in accordance with the terms of such bid, and gives such bond or bonds as may be specified in the bidding or Contract Documents, with a surety admitted in the jurisdiction of the Project and otherwise acceptable to the Owner, for the faithful performance of such Contract and for the prompt payment of labor and material furnished in the prosecution thereof; or (2) pays to the Owner the difference, not to exceed the amount of this Bond, between the amount specified in said bid and such larger amount for which the Owner may in good faith contract with another party to perform the work covered by said bid, then this obligation shall be null and void, otherwise to remain in full force and effect. The Surety hereby waives any notice of an agreement between the Owner and Contractor to extend the time in which the Owner may accept the bid. Waiver of notice by the Surety shall not apply to any extension exceeding sixty (60) days in the aggregate beyond the time for acceptance of bids specified in the bid documents, and the Owner and Contractor shall obtain the Surety's consent for an extension beyond sixty (60) days.

If this Bond is issued in connection with a subcontractor's bid to a Contractor, the term Contractor in this Bond shall be deemed to be Subcontractor and the term Owner shall be deemed to be Contractor.

When this Bond has been furnished to comply with a statutory or other legal requirement in the location of the Project, any provision in this Bond conflicting with said statutory or legal requirement shall be deemed deleted herefrom and provisions conforming to such statutory or other legal requirement shall be deemed incorporated herein. When so furnished, the intent is that this Bond shall be construed as a statutory bond and not as a common law bond.


Signed and sealed this 12th day of April, 2022

  
(Witness)

  
(Witness)

Rocky Mountain Recreation, Inc.

(Principal) \_\_\_\_\_ (Seal)

  
(Title)

Old Republic Surety Company

(Surety) \_\_\_\_\_ (Seal)

  
(Title) Jennifer Naber, Attorney-in-Fact

This document has important legal consequences. Consultation with an attorney is encouraged with respect to its completion or modification.  
Any singular reference to Contractor, Surety, Owner or other party shall be considered plural where applicable.

**CAUTION: You should sign an original AIA Contract Document, on which this text appears in RED. An original assures that changes will not be obscured.**

Init.



F. Additional Data



OLD REPUBLIC SURETY COMPANY

POWER OF ATTORNEY

KNOW ALL MEN BY THESE PRESENTS: That OLD REPUBLIC SURETY COMPANY, a Wisconsin stock insurance corporation, does make, constitute and appoint: J. DOUGLAS ENGERMAN, RICHARD M. FORSBERG, SARAH K. FORSBERG, JENNIFER NABER of CRAIG, CO

its true and lawful Attorney(s)-in-Fact, with full power and authority for and on behalf of the company as surety, to execute and deliver and affix the seal of the company thereto (if a seal is required), bonds, undertakings, recognizances or other written obligations in the nature thereof, (other than bail bonds, bank depository bonds, mortgage deficiency bonds, mortgage guaranty bonds, guarantees of installment paper and note guaranty bonds, self-insurance workers compensation bonds guaranteeing payment of benefits, or black lung bonds), as follows:

ALL WRITTEN INSTRUMENTS

and to bind OLD REPUBLIC SURETY COMPANY thereby, and all of the acts of said Attorneys-in-Fact, pursuant to these presents, are ratified and confirmed. This appointment is made under and by authority of the board of directors at a special meeting held on February 18, 1982.

This Power of Attorney is signed and sealed by facsimile under and by the authority of the following resolutions adopted by the board of directors of the OLD REPUBLIC SURETY COMPANY on February 18, 1982.

RESOLVED that, the president, any vice-president or assistant vice president, in conjunction with the secretary or any assistant secretary, may appoint attorneys-in-fact or agents with authority as defined or limited in the instrument evidencing the appointment in each case, for and on behalf of the company to execute and deliver and affix the seal of the company to bonds, undertakings, recognizances, and suretyship obligations of all kinds; and said officers may remove any such attorney-in-fact or agent and revoke any Power of Attorney previously granted to such person.

- RESOLVED FURTHER, that any bond, undertaking, recognizance, or suretyship obligation shall be valid and binding upon the Company (i) when signed by the president, any vice president or assistant vice president, and attested and sealed (if a seal be required) by any secretary or assistant secretary; or (ii) when signed by the president, any vice president or assistant vice president, secretary or assistant secretary, and countersigned and sealed (if a seal be required) by a duly authorized attorney-in-fact or agent; or (iii) when duly executed and sealed (if a seal be required) by one or more attorneys-in-fact or agents pursuant to and within the limits of the authority evidenced by the Power of Attorney issued by the company to such person or persons.

RESOLVED FURTHER that the signature of any authorized officer and the seal of the company may be affixed by facsimile to any Power of Attorney or certification thereof authorizing the execution and delivery of any bond, undertaking, recognizance, or other suretyship obligations of the company; and such signature and seal when so used shall have the same force and effect as though manually affixed.

IN WITNESS WHEREOF, OLD REPUBLIC SURETY COMPANY has caused these presents to be signed by its proper officer, and its corporate seal to be affixed this 25th day of March, 2021

[Signature of Karen J. Haffner]

Assistant Secretary



OLD REPUBLIC SURETY COMPANY

[Signature of Alan Pavlic]

President

STATE OF WISCONSIN, COUNTY OF WAUKESHA - SS

On this 25th day of March, 2021, personally came before me, Alan Pavlic and Karen J Haffner, to me known to be the individuals and officers of the OLD REPUBLIC SURETY COMPANY who executed the above instrument, and they each acknowledged the execution of the same, and being by me duly sworn, did severally depose and say: that they are the said officers of the corporation aforesaid, and that the seal affixed to the above instrument is the seal of the corporation, and that said corporate seal and their signatures as such officers were duly affixed and subscribed to the said instrument by the authority of the board of directors of said corporation.



[Signature of Kathryn R. Pearson]

Notary Public

My Commission Expires: September 28, 2022

(Expiration of notary's commission does not invalidate this instrument)

CERTIFICATE

I, the undersigned, assistant secretary of the OLD REPUBLIC SURETY COMPANY, a Wisconsin corporation, CERTIFY that the foregoing and attached Power of Attorney remains in full force and has not been revoked; and furthermore, that the Resolutions of the board of directors set forth in the Power of Attorney, are now in force.



40-5546

Signed and sealed at the City of Brookfield, WI this 12th day of April, 2022

[Signature of Karen J. Haffner]

Assistant Secretary

ORSC 22262 (3-06)





## Financial Statement

Rocky Mountain Recreation Inc is a Corporation in Arapahoe County, incorporated in the State of Colorado in August 1994.

The Officers of the Corporation are Nancy Christie, president, and Peter Christie, vice president.

There is not at this time, nor has there been since the start up of the corporation any major claims, lawsuits or significant outstanding liabilities against the company, or its' current employees, as related to the firm.

No Bankruptcy or Corporate Protection Actions are associated with the company at this time, or at any time since its inception.

FEIN 84-1270650

DUNS No. 879691871

We are a privately held company and do not release financial information. We can provide a letter from our Surety Advisor confirming that Rocky Mountain Recreation, Inc.'s present bonding capacity is available up to \$500,000 single project and \$750,000 aggregate work on hand through a surety company with an AM Best Rating of A+ (Superior) and financial size category of XV (\$2 Billion or greater). It is listed on the Federal Department of Treasury Certified Companies List. Bonding capacity is based on the contractor's present financial position and, should there be a significant change, the surety reserves the right to re-evaluate the contractor. Rocky Mountain Recreation, Inc.'s bond rate is 3%.

Please contact the office if you have questions.



Landscape Structures Inc. ("Manufacturer") warrants that all playstructures and/or equipment sold will conform in kind and in quality to the specifications manual for the products identified in the Acknowledgment of Order and will be free of defects in manufacturing and material. Manufacturer further warrants:

**100-Year Limited Warranty** On all PlayBooster® and PlayShaper® aluminum posts, stainless steel fasteners, clamps, beams and caps against structural failure due to corrosion/natural deterioration or manufacturing defects, and on PlayBooster steel posts against structural failure due to material or manufacturing defects.

**15-Year Limited Warranty** On all Evos® and Weevos® steel arches, all plastic components (including TuffTimbers™ edging), all aluminum and steel components not covered above, Mobius® climbers, Rhapsody® Outdoor Musical Instruments, decks and TenderTuff™ coatings (except Wiggle Ladders, Chain Ladders and Swing Chain) against structural failure due to material or manufacturing defects.

**10-Year Limited Warranty** On concrete products against structural failure due to natural deterioration or manufacturing defects. Does not cover minor chips, hairline cracks or efflorescence.

**8-Year Limited Warranty** On Aeronet® climbers and climbing cables against defects in materials or manufacturing defects.

**5-Year Limited Warranty** On Rhapsody® cables and mallets against defects in materials or manufacturing defects, on polycarbonate panels against defects in materials or manufacturing defects, and on bamboo panels against delamination due to defects in materials or manufacturing defects. Does not cover damage which may be associated with the natural characteristics of bamboo aging, including but not limited to discoloration, splitting, cracking, warping or twisting, nor the formation of algae, mold and other forms of fungal-type bodies on bamboo.

**3-Year Limited Warranty** On all other parts, i.e.: Pulse® products, all swing seats and hangers, Mobius climber handholds, Wiggle Ladders, Chain Ladders and ProGuard™ Swing Chain, Track Ride trolleys and bumpers, all rocking equipment including Sway Fun® gliders, belting material, HealthBeat® resistance mechanisms, Seesaws, etc., against failure due to corrosion/ natural deterioration or manufacturing defects.

The environment near a saltwater coast can be extremely corrosive. Some corrosion and/or deterioration is considered "normal wear" in this environment. Product installed within 500 yards (457 meters) of a saltwater shoreline will only be covered for half the period of the standard product warranty, up to a maximum of five years, for defects caused by corrosion. Products installed in direct contact with saltwater or that are subjected to salt spray are not covered by the standard warranty for any defects caused by corrosion.

This warranty does not include any cosmetic issues or wear and tear from normal use of the product, or misuse or abuse of the product. It is valid only if the playstructures and/or equipment are erected to conform with Landscape Structures' installation instructions and maintained according to the maintenance procedures furnished by Landscape Structures Inc.



## 2022 Play Equipment Warranty

You have our word.

All the warranties commence on date of Manufacturer's invoice. Should any failure to conform to the above express warranties appear within the applicable warranty period, Manufacturer shall, upon being notified in writing promptly after discovery of the defect and within the applicable warranty period, correct such nonconformity either by repairing any defective part or parts, or by making available a replacement part within 60 days of written notification. Manufacturer shall deliver the repaired or replacement part or parts to the site free of charge, but will not be responsible for providing labor or the cost of labor for the removal of the defective part or parts, the installation of any replacement part or parts or for disposal costs of any part or parts. Replacement parts will be warranted for the balance of the original warranty.

THIS WARRANTY IS EXCLUSIVE AND IN LIEU OF ALL OTHER WARRANTIES, WHETHER EXPRESSED OR IMPLIED, INCLUDING BUT NOT LIMITED TO ANY WARRANTY OF MERCHANTABILITY OR OF FITNESS FOR A PARTICULAR PURPOSE.

The remedies hereby provided shall be the exclusive and sole remedies of the purchaser. Manufacturer shall not be liable for any direct, indirect, special, incidental or consequential damages.

Manufacturer neither assumes nor authorizes any employee, representative or any other person to assume for Manufacturer any other liability in connection with the sale or use of the structures sold, and there are no oral agreements or warranties collateral to or affecting this agreement. The warranties stated above are valid only if the structures and/or equipment are erected in conformance with Landscape Structures' installation instructions and maintained according to the maintenance procedures furnished by Landscape Structures Inc.; have been subjected to normal use for the purpose for which the goods were designed; have not been exposed to saltwater or salt spray; have not been subject to misuse, negligence, vandalism, or accident; have not been subjected to addition or substitution of parts; and have not been modified, altered, or repaired by persons other than Manufacturer or Manufacturer's designees in any respect which, in the judgement of Manufacturer, affects the condition or operation of the structures.

To make a claim, send your written statement of claim, along with the original job number or invoice number to: Landscape Structures Inc. 601 7th Street South, Delano, Minnesota, 55328-8605.

Signed:  President Date: 01/01/2022





## Terms of Sale

**PRICING:** Landscape Structures' list prices do not include delivery and handling charges. Prices are subject to change without notice.

**TERMS:** To tax-supported institutions and those with established credit: net 30 days from the date of the invoice. 1.5% per month thereafter; freight charges are prepaid and applied to the invoice.

**TAXES:** Landscape Structures' list prices do not include applicable taxes, if any.

**WEIGHTS:** Weights are approximate and may vary.

**DELIVERY:** If delivery of the equipment is by common carrier, and there is damage or a shortage, notify the carrier at once and sign delivery documents provided by the carrier noting the damage or shortage. Most products are delivered on large pallets and will require a forklift or similar equipment to unload as a unit on the site.

**INSTALLATION:** All playstructures and/or equipment are delivered unassembled and packaged with recyclable materials. For a list of factory-certified installers in your area, please contact your Landscape Structures playground consultant.

**SERVICE:** We have knowledgeable, qualified playground consultants throughout the world who are available to help you before, during and after the sale. Landscape Structures has exclusive design software that features all of our parts and pieces in pull-down menus. With this software, your playground consultant can design a playground layout that meets not only your needs, but ASTM and CPSC standards as well. In addition, we have a full staff of CPSI-certified designers, along with 2D and 3D drawing capabilities and custom capabilities to assist you with your playground plans.

**RETURN POLICY:** As an indication of our commitment to our customers, Landscape Structures will accept returns of new structures and/or new equipment purchased within 60 days of the original invoice date. Advance notification is necessary to ensure proper credit. Parts not included in this return policy are custom parts (including PlayShaper® posts), as well as used or damaged parts. A 20% restock fee plus all return freight charges will apply to all product returns. NOTE: All parts are subject to inspection upon return. Parts returned damaged may not receive a full credit. For this reason, it is important that all returned parts are properly packaged to prevent damage while in transit. Please contact your Landscape Structures playground consultant for the shipping address.

**PRODUCT CHANGES:** Because of our commitment to safety, innovation, and value, we reserve the right to change specifications at any time.

**PLEASE CONTACT US AT:**

Landscape Structures Inc.  
601 7th St. South  
Delano, MN 55328-8605  
888.438.6574 (inside the U.S.A.)  
763.972.5200 (outside the U.S.A.)  
playlsi.com





## F. Additional Data

### Minimum Playground Design/Build Contractor Requirements

At least five years in the industry, with experience directly related to playground projects of facilities similar in size and scope. Rocky Mountain Recreation has over 28 years of experience providing turnkey playground solutions throughout Colorado.

Each design/build Contractor must show:

(a) complete disclosure of any incidents of default on projects where the Contractor or related entity acted as project sponsor and the current status of such incidents;

Not applicable, no incidents of default on projects.

(b) complete disclosure of any liabilities, contingent liabilities, obligations, charges and liens, covenants, off-balance sheet financing arrangements, defaults, legal action pending, or other matters that might prevent the Contractor from implementing the Project; and

Not applicable, no incidents.

(c) the Contractor's or related entity's latest audited financial statements available as at the date of the RFP Submission.

See attached financial statement.

Ability to meet the bonding and insurance requirements of the City of Grand Junction. Submit a Bid Bond and COI with this response. Yes, we have the ability to meet the bonding and insurance requirements. Rocky Mountain Rec has attached a sample insurance certificate. Upon contract award and execution, Rocky Mountain Recreation will obtain a single project policy for Professional Liability Insurance to bring us to full compliance of bonding and insurance requirements. We have included the required bid bond with this RFP response and have the ability to obtain a Performance and Payment Bond upon award.

Architect and engineers retained to design/construct facility are to be licensed/registered to practice in Colorado. We have an in-house designer as well as access to our manufacturer Landscape Structures teams of designers that are able to practice within the state of Colorado.

Qualified and permitted by law to perform the services provided for this project. All personnel engaged in this work for this project shall likewise be qualified and permitted to perform necessary duties. Rocky Mountain Recreation has qualified personnel that are legally permitted to execute a turnkey playground installation for the Dos Rios project.

Ensure compliance with all applicable environmental regulations related to the project.

Our team has the ability to comply with any disclosed environmental regulations that are applicable to this project.

## F. Additional Data

### Minimum Playground Design/Build Contractor Requirements

The ability to develop value engineered option that fit within the \$300,000 budget, plans, drawings, designs, and to obtain and manage permitting, scheduling and any other typical building construction task.

Project management and supervision.

We have an in-house project manager that oversees all installations to ensure a successful installation.

Coordination of construction, scheduling of construction meetings and resolving discrepancies or disputes with sub-contractors or other supply or services vendors. Rocky Mountain Recreation has a longstanding relationship with Redwood's Precision Landscaping to install playground equipment. Scott and Heather Humphrey of Redwood's have extensive experience and strong attention to detail. They will ensure that the new equipment will be installed to specifications, within the proposed timeline. They are a certified Landscape Structures playground equipment installer and CPSI. Rocky Mountain Recreation remain the primary contact throughout the duration of the project.

Preparation of all plans, schematics, drawings, scope, specifications, and all other related documents and requirements associated with the successful completion of this project.

We include installation drawings, schematic 2D and 3D renderings of the playground design, specifications as a standard offering with our turnkey playground installations.

Providing a time frame for completion of total design development, and each construction phase as well as a schedule for total completion of the project.

A timeline has been provided in this RFP under section C.

Scheduling inspections and meeting applicable National, State and local building and Aquatic code requirements to achieve approval of work. The selected Contractor will be responsible for obtaining all building permits and will be responsible for permit related fees.

Rocky Mountain Recreation will schedule according to what is required to achieve approval of work.

## F. Additional Data

# Terms & Conditions

While Rocky Mountain Recreation, Inc attempts to evaluate all aspects of the project to provide turnkey pricing, please note that the follow terms and conditions apply unless stated otherwise in our price proposal.

1. Pricing does not include prevailing wage or Davis Bacon Wage rates.
2. Pricing is based on one mobilization.
3. Pricing is based on good access and access by bobcat.
4. Pricing is based on installation into dirt surfacing; we will move existing EWF aside.
5. Layout based on footing area clear of in ground drains.
6. Additional EWF provided by the City after RMR's completion.
7. Prices are valid for 90 days only. Terms: Net 30 days. With Approved Credit. No retainage shall be held, and all invoices will be paid in full within terms aforementioned.
8. Pricing based on equipment shipping to site and being installed immediately. No storage or transportation except from LSI to Grand Junction has been accounted for in this proposal.