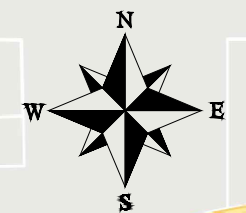


# CITY OF GRAND JUNCTION REDLANDS PARKWAY OVERLAY IMPROVEMENTS

April 30, 2022

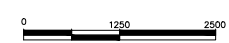


Sheet Index

- 1 Cover Sheet
- 2 Standard Abbreviations, Legend, & Symbols
- 3 Summary of Earthwork Quantities
- 4 Summary of Approximate Quantities
- 5-6 Typical Cross Sections
- 7-10 Removal Plan
- 11-17 Improvement Plan
- Road Profile
- Road Cross Sections
- Staking Plan
- Striping Plan
- Signing Plan
- Storm Water Management Plan

PROJECT LOCATION

VICINITY MAP



*Public Works  
Engineering Division*

NOTE: NOTIFY AFFECTED UTILITY VENDOR 48 HOURS PRIOR TO EXCAVATIONS THAT WILL EXPOSE UTILITY LINES. THE COVER SHEET WILL HAVE A LISTING OF UTILITY VENDORS AND TELEPHONE NUMBERS.

REVISION	DESCRIPTION	DATE
REVISION Δ REV. 1		DATE
REVISION Δ REV. 2		DATE
REVISION Δ REV. 3		DATE
REVISION Δ REV. 4		DATE



Know what's below.  
Call before you dig.

**ABBREVIATIONS**

AASHTO	AMERICAN ASSOCIATION OF STATE HIGHWAY & TRANSPORTATION OFFICIALS
ABC	AGGREGATE BASE COURSE
AC	ASBESTOS CEMENT
AP	ANGLE POINT
ASB	ANCHORED STRAW BALES
ASP	ALUMINIZED STEEL PIPE
ASTM	AMERICAN SOCIETY FOR TESTING MATERIALS
AWWA	AMERICAN WATER WORKS ASSOCIATION
BC	BACK OF CURB
BF	BUTTERFLY VALVE
BOW	BACK OF WALK
BCR	BEGIN CURB RETURN
BOT	BOTTOM
BSWMP	BETTER STORM WATER MANAGEMENT PRACTICES
CH	CHORD
CAP	CORRUGATED ALUMINUM PIPE
CDOT	COLORADO DEPARTMENT OF TRANSPORTATION
CI	CAST IRON
C, G, & SW	CURB, GUTTER & SIDEWALK
C	CENTER LINE
CL	CLEAR
CMP	CORRUGATED METAL PIPE
CO	CLEAN OUT
COMB	COMBINATION (AS IN STORM SEWER AND SANITARY SEWER)
CONC	CONCRETE
CSM	CITY SURVEY MONUMENT
CSP	CORRUGATED STEEL PIPE
CU	COPPER
DI	DUCTILE IRON
DWY	DRIVEWAY
E	ELECTRIC
ECR	END CURB RETURN
EG	EDGE OF GUTTER
EL	ELEVATION
EP	EDGE OF PAVEMENT
EX	EXISTING
FB	FULL BODY
FC	FACE OF CURB
FG	FINISHED GRADE
F	FLOW LINE
FL	FLANGE
FM	FORCE MAIN
FO	FIBER OPTICS
FS	FAR SIDE
FTG	FOOTING
G	GAS
GB	GRADE BREAK
GM	GAS METER
GV	GATE VALVE
HBP	HOT BITUMINOUS PAVEMENT
HDPE	HIGH DENSITY POLYETHYLENE
INV	INVERT
IRR	IRRIGATION
L	LENGTH OF ARC
LC	LONG CHORD
LF	LINEAR FEET
LL	LONG ARC
LS	SHORT ARC
LT	LEFT
MB	MAILBOX
MCSM	MESA COUNTY SURVEY MONUMENT
MH	MANHOLE
MJ	MECHANICAL JOINT
MW	MILL WRAP
N/A	NOT APPLICABLE
NIC	NOT IN CONTRACT
NOP	NO ONE PERSON
NRCP	NON-REINFORCED CONCRETE PIPE
NS	NEAR SIDE
NTS	NOT TO SCALE
OHP	OVERHEAD POWER
OHT	OVERHEAD TELEPHONE
PC	POINT OF CURVATURE
PCC	POINT OF COMPOUND CURVATURE
PE	POLYETHYLENE
PERF	PERFORATED
PI	POINT OF INTERSECTION
PIP	PLASTIC IRRIGATION PIPE
POC	POINT ON CURVE
POT	POINT ON TANGENT
PR	PROPOSED
PRC	POINT OF REVERSE CURVATURE
PT	POINT OF TANGENCY
PVC	POLYVINYL CHLORIDE
R	RADIUS
RCP	REINFORCED CONCRETE PIPE
REQ'D	REQUIRED
RG	RESTRAINED GLANDS
RL	LONG RADIUS
ROW	RIGHT OF WAY
RP	RADIUS POINT
RR	RAIL ROAD
RS	SHORT RADIUS
RT	RIGHT
S	SLOPE
SAN	SANITARY
SC	SHORT CHORD
SCD	STANDARD CONTRACT DOCUMENTS
SCH	SCHEDULE
SF	SILT FENCE
SL	SECTION LINE
SSRB	STANDARD SPECIFICATIONS FOR ROAD & BRIDGE CONSTRUCTION
SSUJ	STANDARD SPECIFICATIONS FOR CONSTRUCTION OF UNDERGROUND UTILITIES
STA	STATION
STL	STEEL
STM	STORM
T	TELEPHONE
TAN	LENGTH OF TANGENT
TC	TOP OF CURB
TH	TEST HOLE
TV	TELEVISION
(TYP)	TYPICAL
UU	UNDERGROUND UTILITIES
VC	VERTICAL CURVE
VCP	VITRIFIED CLAY PIPE
VPC	VERTICAL POINT OF CURVATURE
VPCC	VERTICAL POINT OF COMPOUND CURVATURE
VPRC	VERTICAL POINT OF REVERSE CURVATURE
VPI	VERTICAL POINT OF INTERSECTION
VPT	VERTICAL POINT OF TANGENCY
W	WATER
Δ	DELTA ANGLE

**LEGEND**

BSWMP DRAINAGE BASIN BOUNDARY		PROPOSED CONCRETE CURB AND GUTTER	
BSWMP ANCHORED STRAW BALES		PROPOSED CONCRETE CURB, GUTTER, & SIDEWALK	
BSWMP SILT FENCE		PROPOSED CONCRETE SIDEWALK	
BUILDING		PROPOSED "WET" UTILITIES (CONSTRUCTION NOTE WILL INDICATE TYPE, SIZE, AND MATERIAL OF NEW MAIN)	
CONCRETE CURB AND GUTTER		ALL PROPOSED FEATURES NOT SHOWN IN LEGEND WILL BE SHOWN THE SAME AS THEIR EXISTING COUNTERPART, BUT INDICATED BY BOLDER LINETYPE	
CONCRETE CURB, GUTTER, & SIDEWALK		RAIL ROAD	
CONCRETE DITCH		RETAINING WALL	
CONCRETE SIDEWALK		STRIPING (CONTINUOUS WHITE)	
CULVERT		STRIPING (DASHED WHITE)	
EARTH DITCH		STRIPING (CONTINUOUS YELLOW)	
EDGE OF GRAVEL		STRIPING (DASHED YELLOW)	
EDGE OF PAVEMENT		TOP OF SLOPE	
FENCE (HT & MATL NOTED)		CONTOUR LINES (SHOWN BETWEEN TOP & TOE)	
GUARD RAIL		TOE OF SLOPE	
HATCHING: INDICATES ASPHALT REMOVAL		TRAFFIC DETECTOR LOOP	
HATCHING: INDICATES CONCRETE REMOVAL		UTILITY LINE (ABANDON) (THIS CASE A WATER LINE)	
HATCHING: INDICATES STAGING AREA		UTILITY LINE (CABLE TV)	
LINE (CENTER OF IMPROVEMENTS)		UTILITY LINE (ELECTRIC)	
LINE (CITY LIMITS)		UTILITY LINE (FIBER OPTIC)	
LINE (CONTROL)		UTILITY LINE (GAS)	
LINE (EASEMENT)		UTILITY LINE (HIGH VOLTAGE OVERHEAD POWER)	
LINE (MONUMENT/SECTION)		UTILITY LINE (OVERHEAD POWER)	
LINE (PROPERTY)		UTILITY LINE (OVERHEAD TELEPHONE)	
LINE (RIGHT OF WAY)		UTILITY LINE (SANITARY SEWER)	
MATCH LINE		UTILITY LINE (SANITARY SEWER FORCE MAIN)	
PIPE (IRRIGATION)		UTILITY LINE (SANITARY SEWER SERVICE)	
PIPE (SIPHON)		UTILITY LINE (STORM SEWER)	
		UTILITY LINE (STORM SEWER, PERFORATED)	
		UTILITY LINE (STORM/SANITARY SEWER SEWER COMBINATION)	
		UTILITY LINE (TELEPHONE)	
		UTILITY LINE (WATER)	

**SYMBOLS**

BENCH MARK	
CATCH BASIN	
CLEAN OUT	
CURB STOP	
FIRE HYDRANT	
GUY WIRE ANCHOR	
HEADGATE	
IRRIGATION PUMP	
MAILBOX	
MANHOLE (ELECTRIC)	
MANHOLE (GAS)	
MANHOLE (SANITARY/STORM)	
MANHOLE (TELEPHONE)	
MANHOLE (TV)	
MANHOLE (WATER)	
METER (GAS)	
METER (WATER)	
PEDESTAL (TELEPHONE)	
PEDESTAL (TV)	
PROPERTY PIN	
PULL BOX	
REDUCER FITTING	
SIGN OR POST (SIGN TYPE NOTED)	
SPRINKLER HEAD	
STREET LIGHT	
SURVEY MONUMENT (CITY)	
SURVEY MONUMENT (TYPE NOTED)	
TEST HOLE	
TRAFFIC PAINT MARKING	
TRAFFIC SIGNAL POLE AND MAST ARM	
UTILITY POLE	
VALVE (GAS)	
VALVE (IRRIGATION)	
VALVE (WATER)	
VEGETATION (HEDGE OR BUSH)	
VEGETATION (TREE STUMP)	
VEGETATION (TREE) (CALIPER SIZE NOTED)	
WATER HYDRANT	
WEIR	
YARD LIGHT	

BAR SCALE:

GRAPHIC SCALE

( IN FEET )  
1 inch = 20 ft.

NORTH ARROW:

REVISION	DESCRIPTION	DATE	DRAWN BY	DATE
REVISION Δ REV 1			JOE	2030
REVISION Δ REV 2			JOE	2030
REVISION Δ REV 3			JOE	2030
REVISION Δ REV 4			JOE	2030

SEE PLAN FOR SCALE INFO



PUBLIC WORKS  
ENGINEERING DIVISION  
PROJECT NO. F000133

REDLANDS PARKWAY OVERLAY IMPROVEMENTS  
STD ABBREV LEGEND  
May 13, 2022

N:\EngProj\F000133 (Redlands Parkway)\60CAD\DESIGN\STANDARD ABBREVIATIONS\LEGENDS AND SYMBOLS.dwg - PLOTTED 5/13/2022 11:29:32 AM

DESCRIPTION	DATE	DRAWN BY	DATE
REVISION $\Delta$ REV 1	— DATE	JOE	2030
REVISION $\Delta$ REV 2	— DATE	DESIGNED BY JOE	DATE 2030
REVISION $\Delta$ REV 3	— DATE	CHECKED BY JOE	DATE 2030
REVISION $\Delta$ REV 4	— DATE	APPROVED BY JOE	DATE 2030

NO SCALE



PUBLIC WORKS  
ENGINEERING DIVISION  
PROJECT NO.-----

REDLANDS PARKWAY OVERLAY IMPROVEMENTS  
EARTHWORK QUANTITIES  
May 13, 2022



REVISION	DESCRIPTION	DATE
△ REV 1		
△ REV 2		
△ REV 3		
△ REV 4		

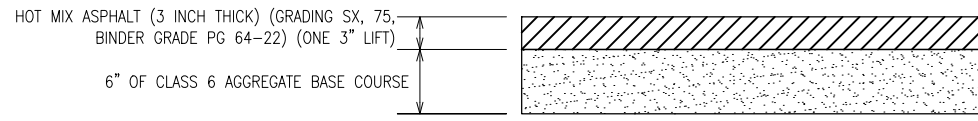
DRAWN BY	JOE	DATE	2030
DESIGNED BY	JOE	DATE	2030
CHECKED BY	JOE	DATE	2030
APPROVED BY	JOE	DATE	2030

NO SCALE

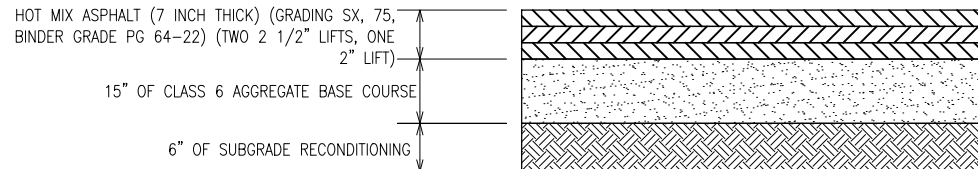


PUBLIC WORKS  
ENGINEERING DIVISION  
PROJECT NO.-----

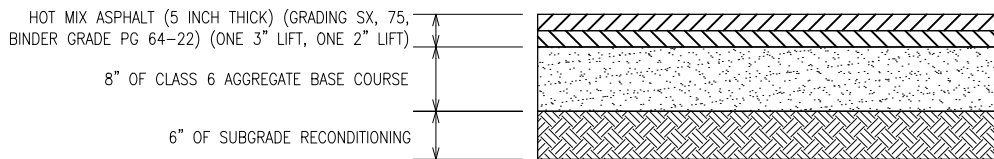
REDLANDS PARKWAY OVERLAY IMPROVEMENTS  
SUMMARY OF QUANTITIES  
May 13, 2022



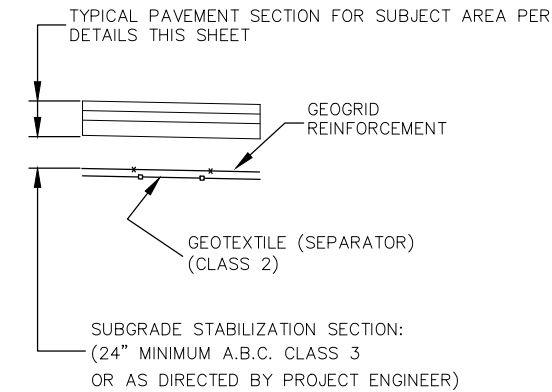
**BIKE PATH ASPHALT PAVEMENT SECTION**  
(SEE IMPROVEMENT PLAN FOR EXTENTS OF THIS ASPHALT PAVEMENT DETAIL)



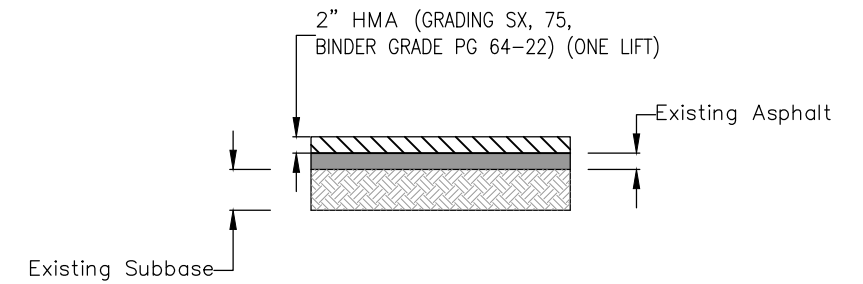
**REDLANDS PARKWAY ASPHALT PAVEMENT SECTION**  
(SEE IMPROVEMENT PLAN FOR EXTENTS OF THIS ASPHALT PAVEMENT DETAIL)



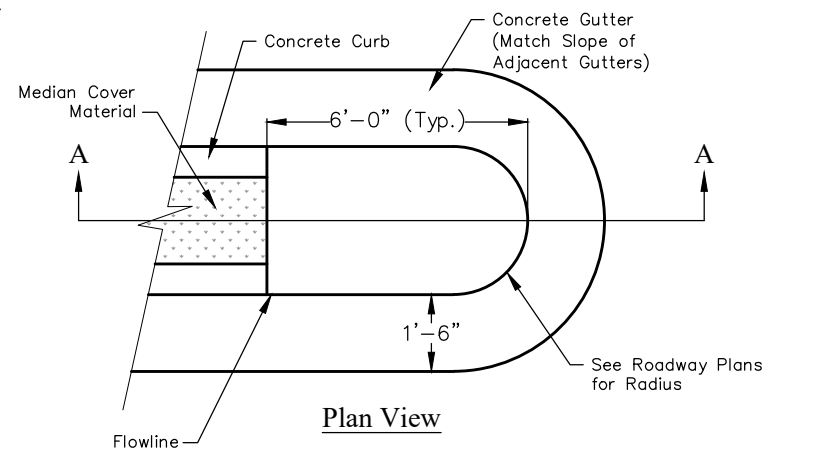
**SOUTH RIM DRIVE ASPHALT PAVEMENT SECTION**  
(SEE IMPROVEMENT PLAN FOR EXTENTS OF THIS ASPHALT PAVEMENT DETAIL)



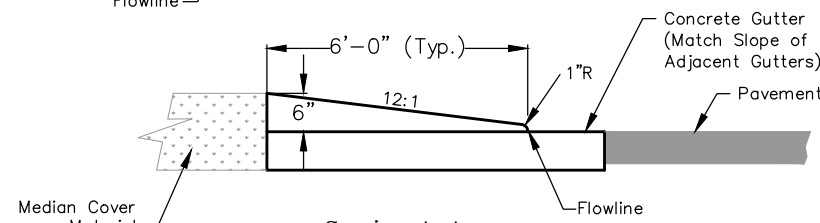
**SUBGRADE STABILIZATION**  
(REQUIRED IN SOFT SPOTS AS DIRECTED BY PROJECT ENGINEER)



**PAVEMENT "MILL AND FILL" SECTION**  
**2" MILL AND HOT MIX ASPHALT OVERLAY**  
(SEE IMPROVEMENT PLAN FOR EXTENTS OF THIS ASPHALT PAVEMENT DETAIL)



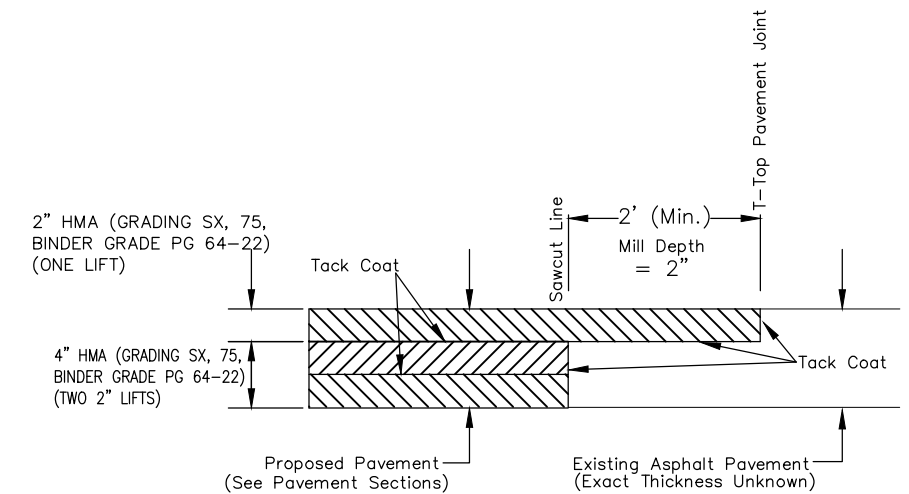
**Plan View**



**Section A-A**

**MEDIAN ISLAND NOSE DETAIL**

**Notes:**  
- Median Nose will be included in the cost of curb and gutter and is measured at flow-line.  
- Thickness of curb and gutter section shall match concrete pavement thickness.



**T-TOP DETAIL**

**T-TOP NOTES**

1. THE MINIMUM T-TOP ASPHALT THICKNESS SHALL BE 2-INCH AND THE MINIMUM WIDTH SHALL BE 2- FEET.
2. THE T-TOP PAVEMENT JOINT SHALL NOT BE LOCATED IN A VEHICLE WHEEL PATH. THE CONTRACTOR SHALL ADJUST THE T-TOP PAVEMENT JOINT ACCORDINGLY.

**Note:**

- The Contractor shall account for up to 25% of the total roadway reconstruction areas (requiring base course and surfacing) requiring subgrade stabilization, as detailed in the Subgrade Stabilization detail, in coming up with his schedule. No adjustment in allowable working time will be considered if the amount of subgrade stabilization is less than 25% of the total roadway reconstruction areas. The work for subgrade stabilization will be paid for separately as Muck Excavation, Aggregate Base Course (Class 3), Geotextile (Separator) (Class 2), and Geogrid Reinforcement.

REVISION	DESCRIPTION	DATE	DRAWN BY	DATE
REVISION A REV 1			JOE	2030
REVISION A REV 2			JOE	2030
REVISION A REV 3			JOE	2030
REVISION A REV 4			JOE	2030

NO SCALE



**PUBLIC WORKS  
ENGINEERING DIVISION**  
PROJECT NO. ----

**REDLANDS PARKWAY OVERLAY IMPROVEMENTS  
PAVEMENT**  
May 13, 2022

REVISION	DESCRIPTION	DATE	DRAWN BY	DATE
△ REV 1			JOE	2030
△ REV 2			JOE	2030
△ REV 3			JOE	2030
△ REV 4			JOE	2030

NO SCALE

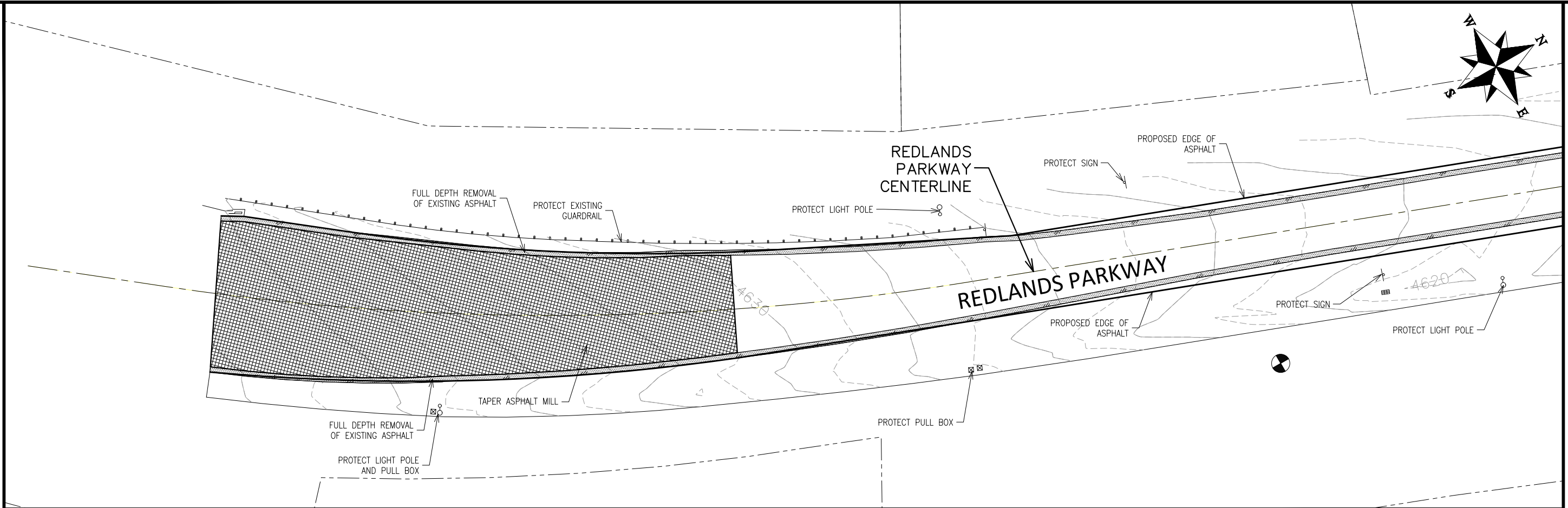
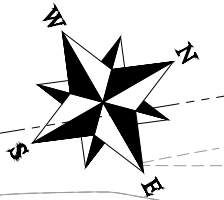


PUBLIC WORKS  
ENGINEERING DIVISION  
PROJECT NO.----

REDLAND PARKWAY OVERLAY IMPROVEMENTS  
XX RD  
May 13, 2022

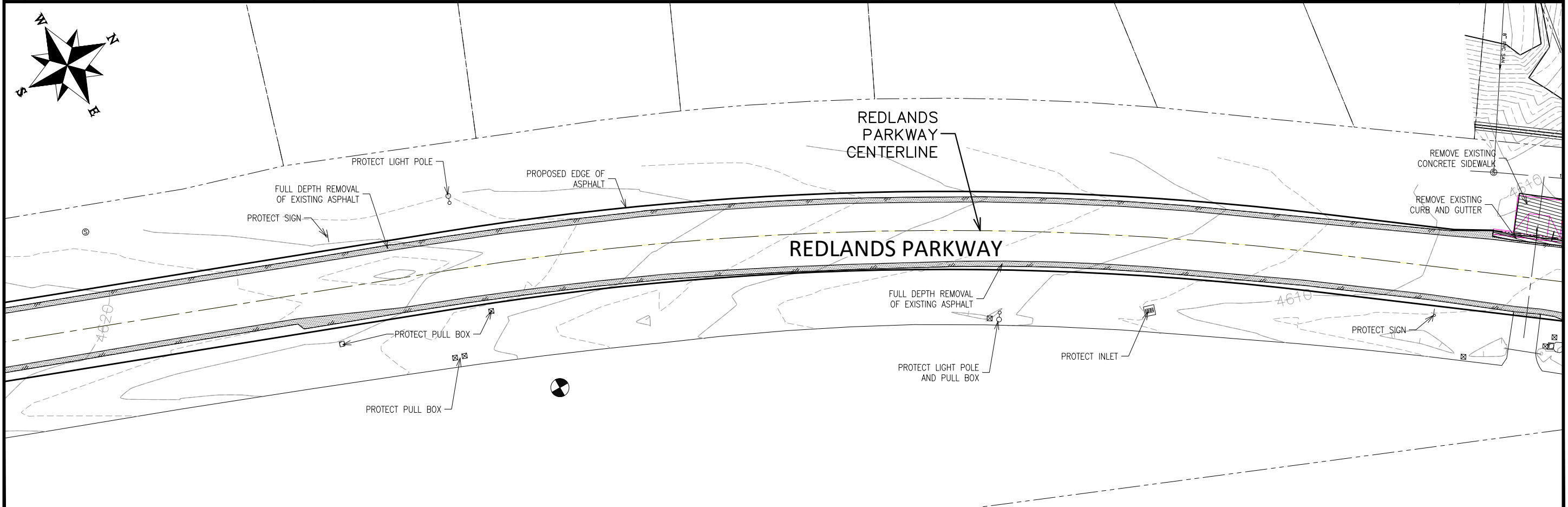
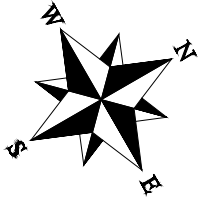
MATCH LINE

MATCH LINE



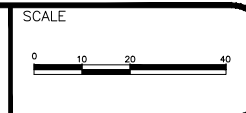
MATCH LINE

MATCH LINE



REVISION	DESCRIPTION	DATE
REVISION Δ REV 1		
REVISION Δ REV 2		
REVISION Δ REV 3		
REVISION Δ REV 4		

DRAWN BY	JOE	DATE	2030
DESIGNED BY	JOE	DATE	2030
CHECKED BY	JOE	DATE	2030
APPROVED BY	JOE	DATE	2030



PUBLIC WORKS  
ENGINEERING DIVISION  
PROJECT NO. F000133

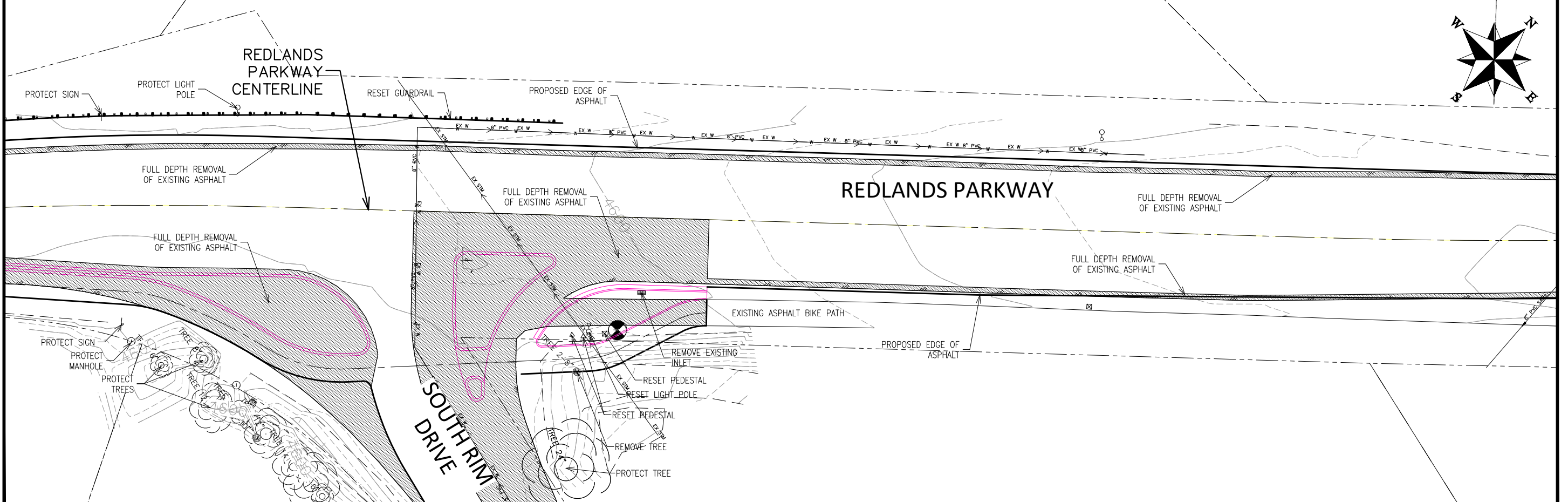
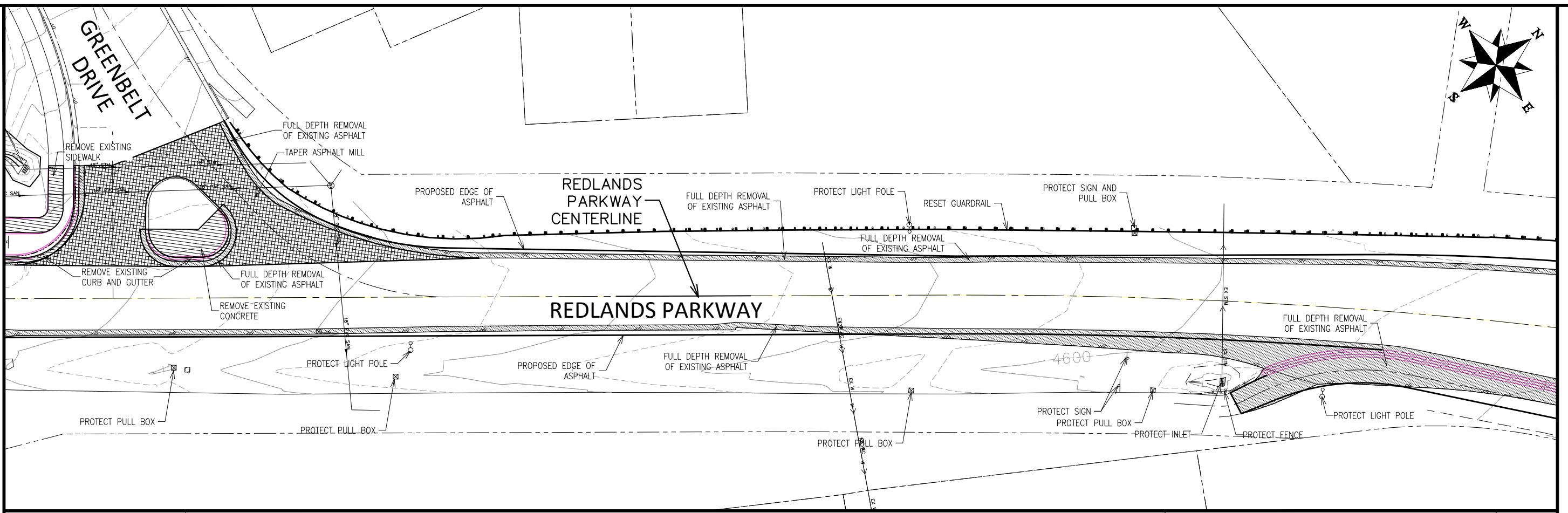
REDLANDS PARKWAY OVERLAY IMPROVEMENTS  
REMOVAL PLAN 1  
May 13, 2022

MATCH LINE

MATCH LINE

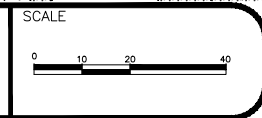
MATCH LINE

MATCH LINE



REVISION	DESCRIPTION	DATE
REVISION Δ REV 1		
REVISION Δ REV 2		
REVISION Δ REV 3		
REVISION Δ REV 4		

DRAWN BY	JOE	DATE	2030
DESIGNED BY	JOE	DATE	2030
CHECKED BY	JOE	DATE	2030
APPROVED BY	JOE	DATE	2030



**PUBLIC WORKS  
ENGINEERING DIVISION**  
PROJECT NO. F000133

**REDLANDS PARKWAY OVERLAY IMPROVEMENTS  
REMOVAL PLAN 2**  
May 13, 2022

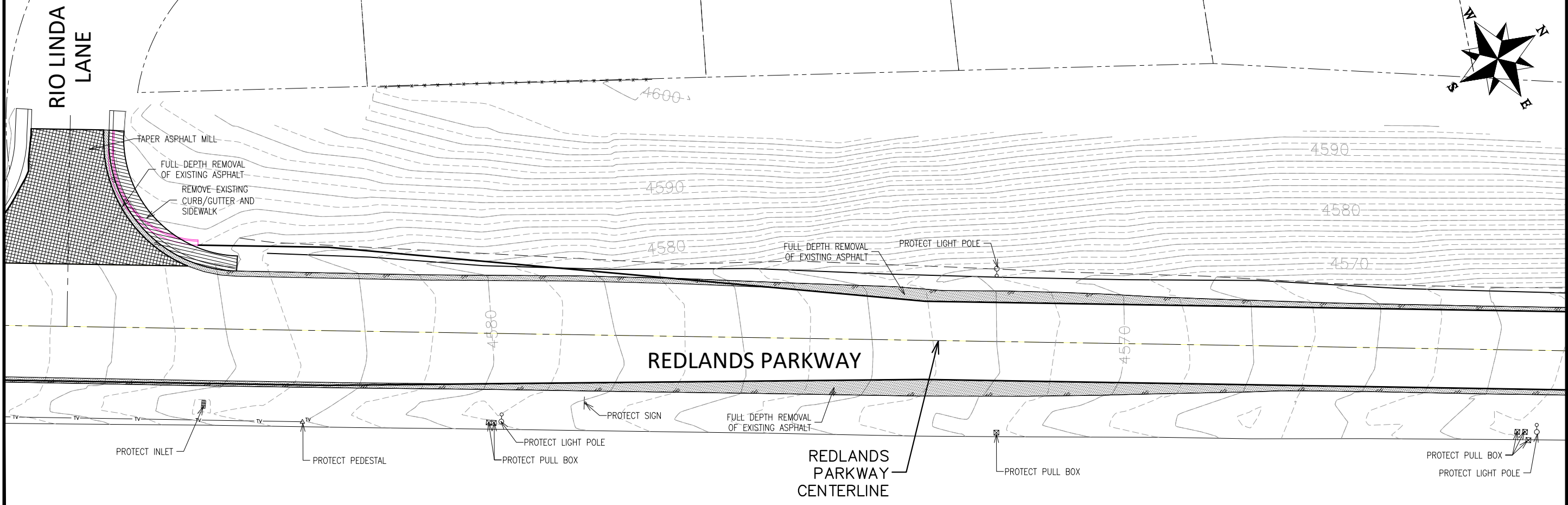
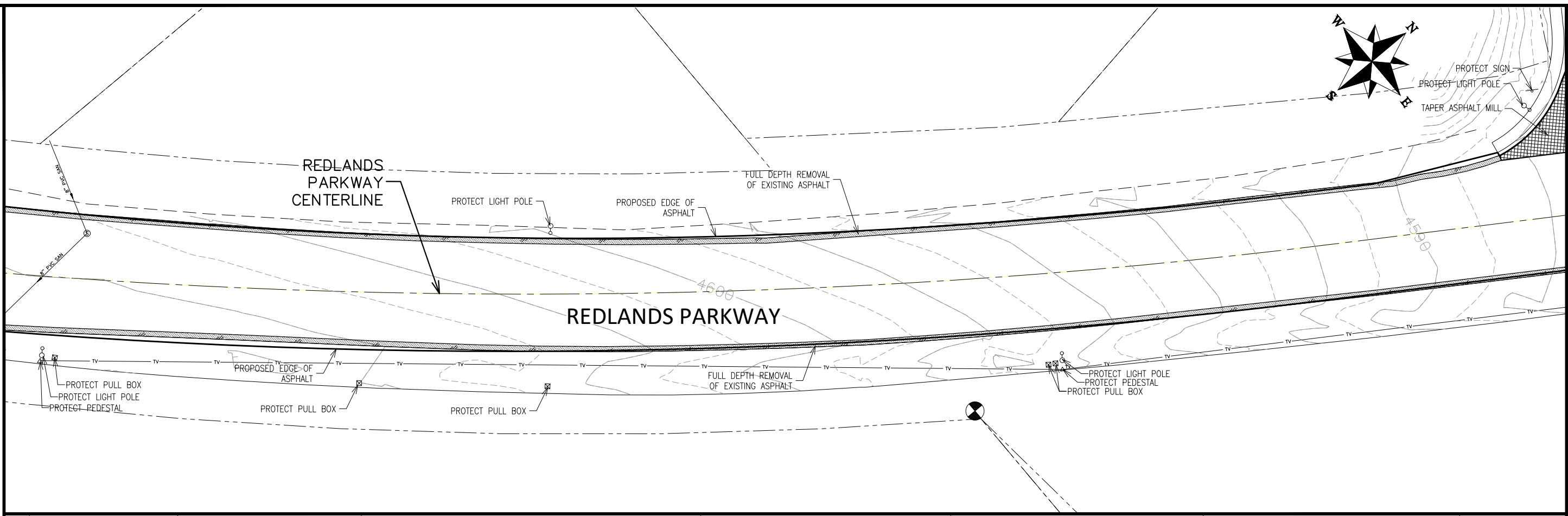


MATCH LINE

MATCH LINE

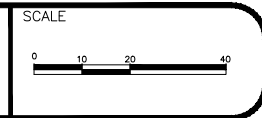
MATCH LINE

MATCH LINE



REVISION	DESCRIPTION	DATE

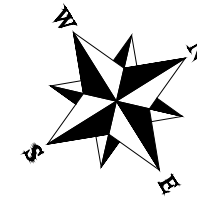
DRAWN BY	JOE	DATE	2030
DESIGNED BY	JOE	DATE	2030
CHECKED BY	JOE	DATE	2030
APPROVED BY	JOE	DATE	2030



PUBLIC WORKS  
ENGINEERING DIVISION  
PROJECT NO. F000133

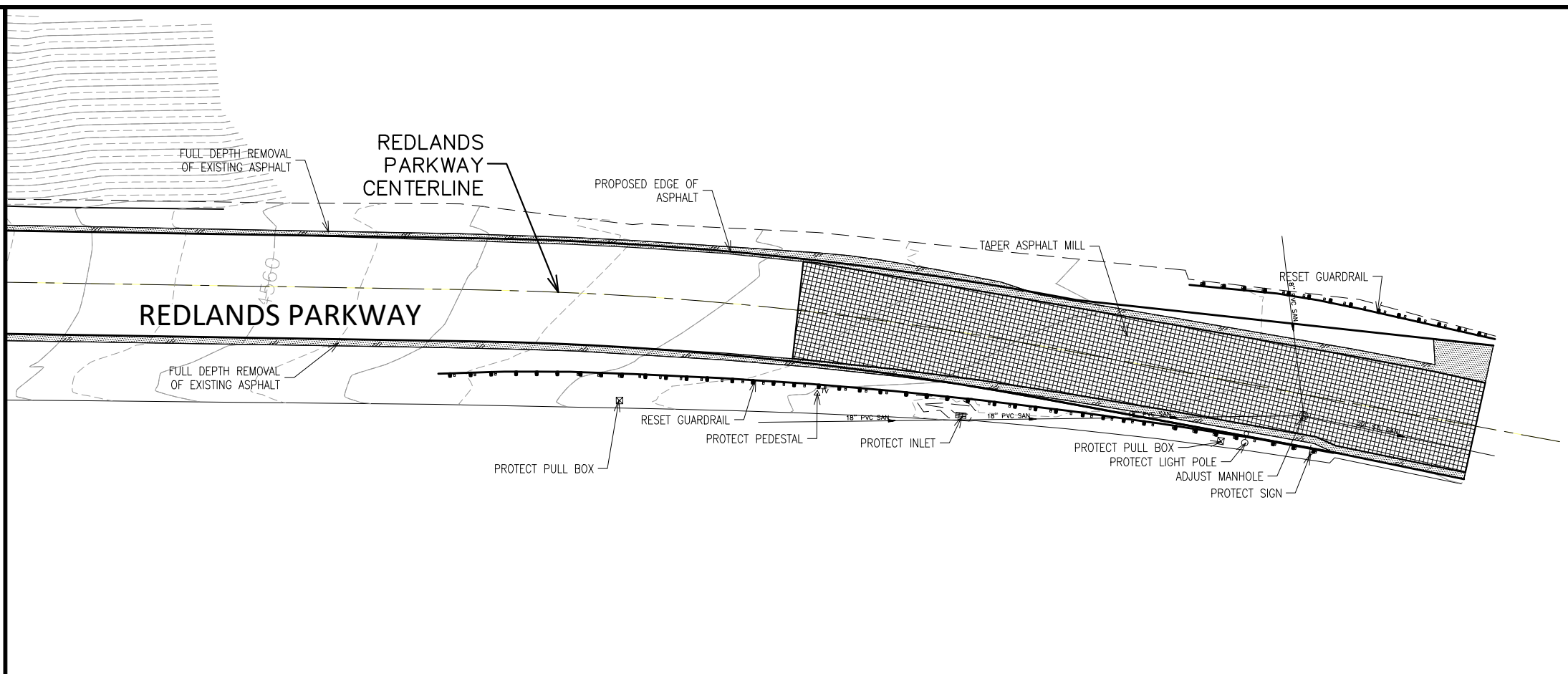
REDLANDS PARKWAY OVERLAY IMPROVEMENTS  
REMOVAL PLAN 3  
May 13, 2022

N:\EngProj\F000133 (Redlands Parkway)\60CAD\DESIGN\REMOVAL PLAN.dwg -- PLOTTED 5/13/2022 11:30:31 AM



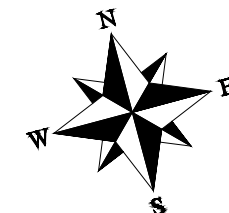
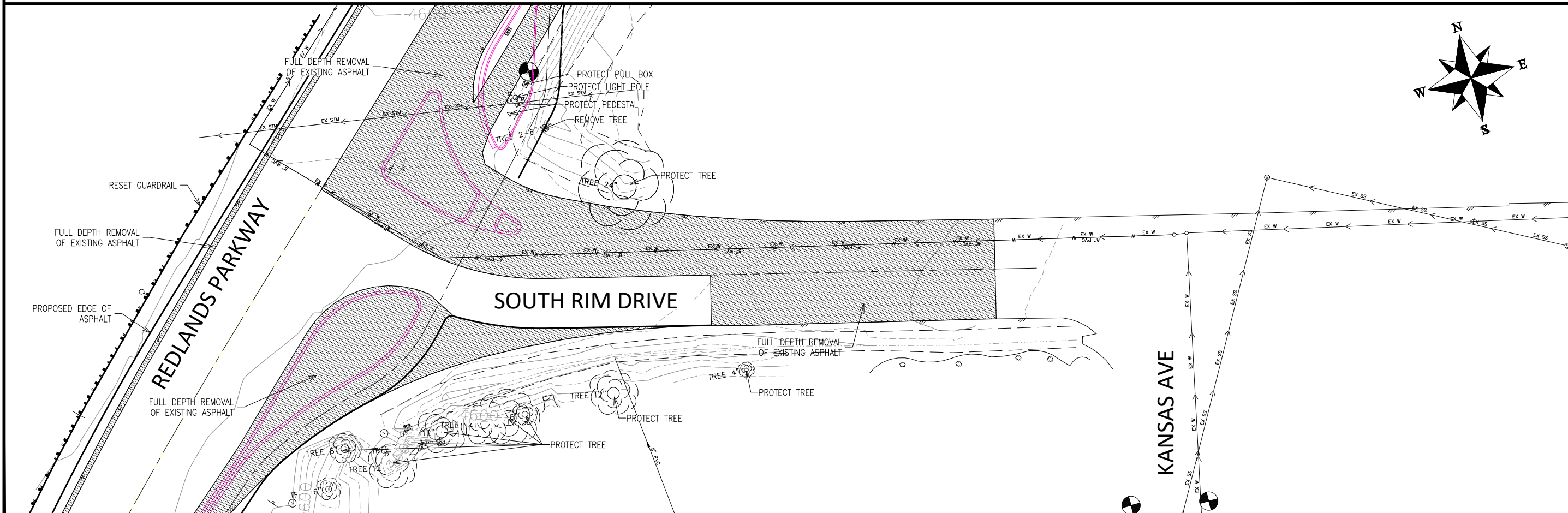
MATCH LINE

MATCH LINE



MATCH LINE

MATCH LINE

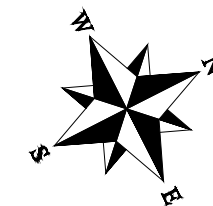


REVISION	DESCRIPTION	DATE	DRAWN BY	DATE	SCALE
REVISION			JOE	2030	
REVISION			JOE	2030	
REVISION			JOE	2030	
REVISION			JOE	2030	



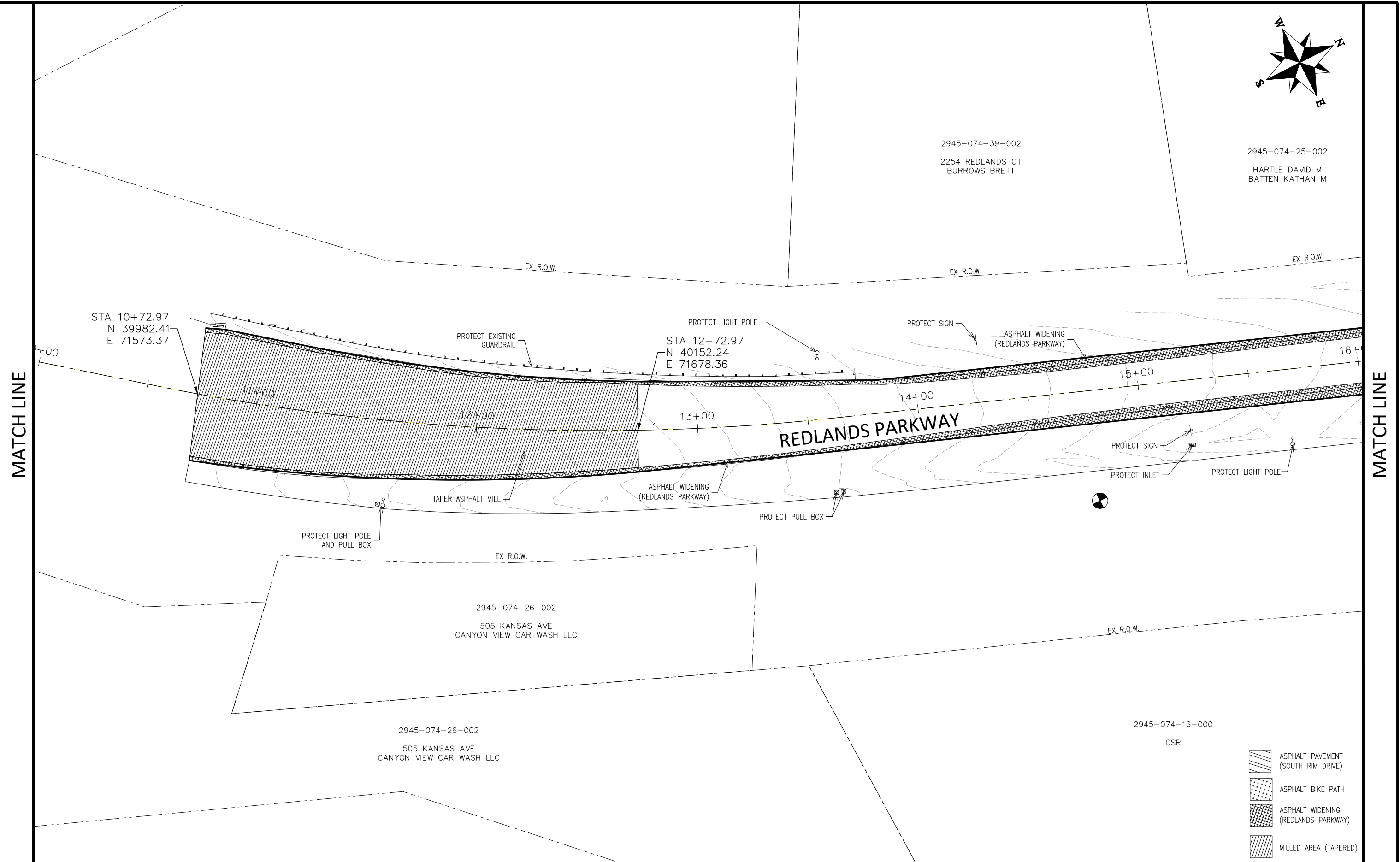
**PUBLIC WORKS  
ENGINEERING DIVISION**  
PROJECT NO. F000133

**REDLANDS PARKWAY OVERLAY IMPROVEMENTS  
REMOVAL PLAN 4**  
May 13, 2022



2945-074-39-002  
2254 REDLANDS CT  
BURROWS BRETT

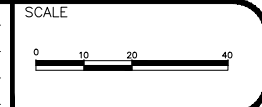
2945-074-25-002  
HARTLE DAVID M  
BATTEN KATHAN M



MATCH LINE

MATCH LINE

REVISION	DESCRIPTION	DATE	DRAWN BY	DATE
REV 1			JOE	2030
REV 2			JOE	2030
REV 3			JOE	2030
REV 4			JOE	2030



**PUBLIC WORKS  
ENGINEERING DIVISION**  
PROJECT NO. ----

**REDLANDS PARKWAY OVERLAY IMPROVEMENTS  
IMPROVEMENT PLAN**  
May 13, 2022

N:\Eng\Proj\F000133 (Redlands Parkway)\60CAD\DESIGN\IMPROVEMENT PLAN.DWG - PLOTTED 5/13/2022 11:30:59 AM

2945-074-25-002  
HARTLE DAVID M  
BATTEN KATHAN M

2945-074-37-006  
528 MILENA WAY  
JONES KARLA L  
JONES PRESTON

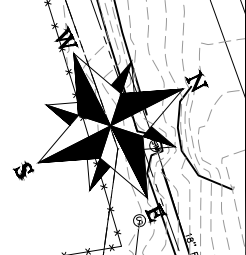
2945-074-37-005  
530 MILENA WAY  
SMITH BRYAN  
SMITH WANDA CARLSON

2945-074-37-004  
532 MILENA WAY  
PERRY RICKY JAMES  
PERRY SONYA

2945-074-37-003  
534 MILENA WAY  
LEDESMA IRENE D

2945-074-37-002  
536 MILENA WAY  
BRANTLEY JEFFREY S  
BRANTLEY ROBIN L

2945-074-37-001  
538 MILENA WAY  
WENZLAFF TERRI L



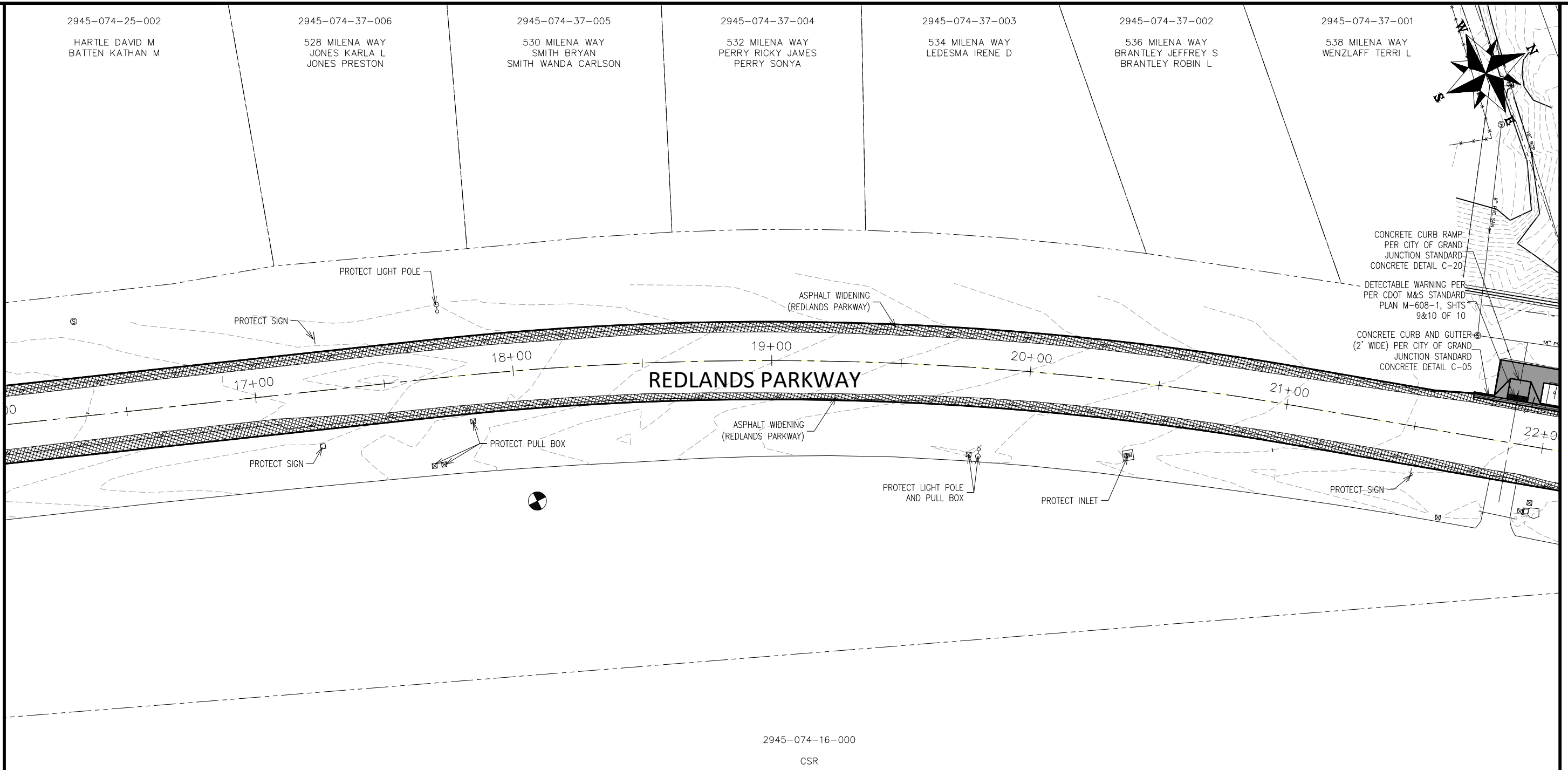
CONCRETE CURB RAMP  
PER CITY OF GRAND  
JUNCTION STANDARD  
CONCRETE DETAIL C-20

DETECTABLE WARNING PER  
PER CDOT M&S STANDARD  
PLAN M-608-1, SHTS  
9&10 OF 10

CONCRETE CURB AND GUTTER  
(2' WIDE) PER CITY OF GRAND  
JUNCTION STANDARD  
CONCRETE DETAIL C-05

MATCH LINE

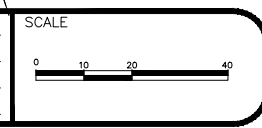
MATCH LINE



2945-074-16-000  
CSR

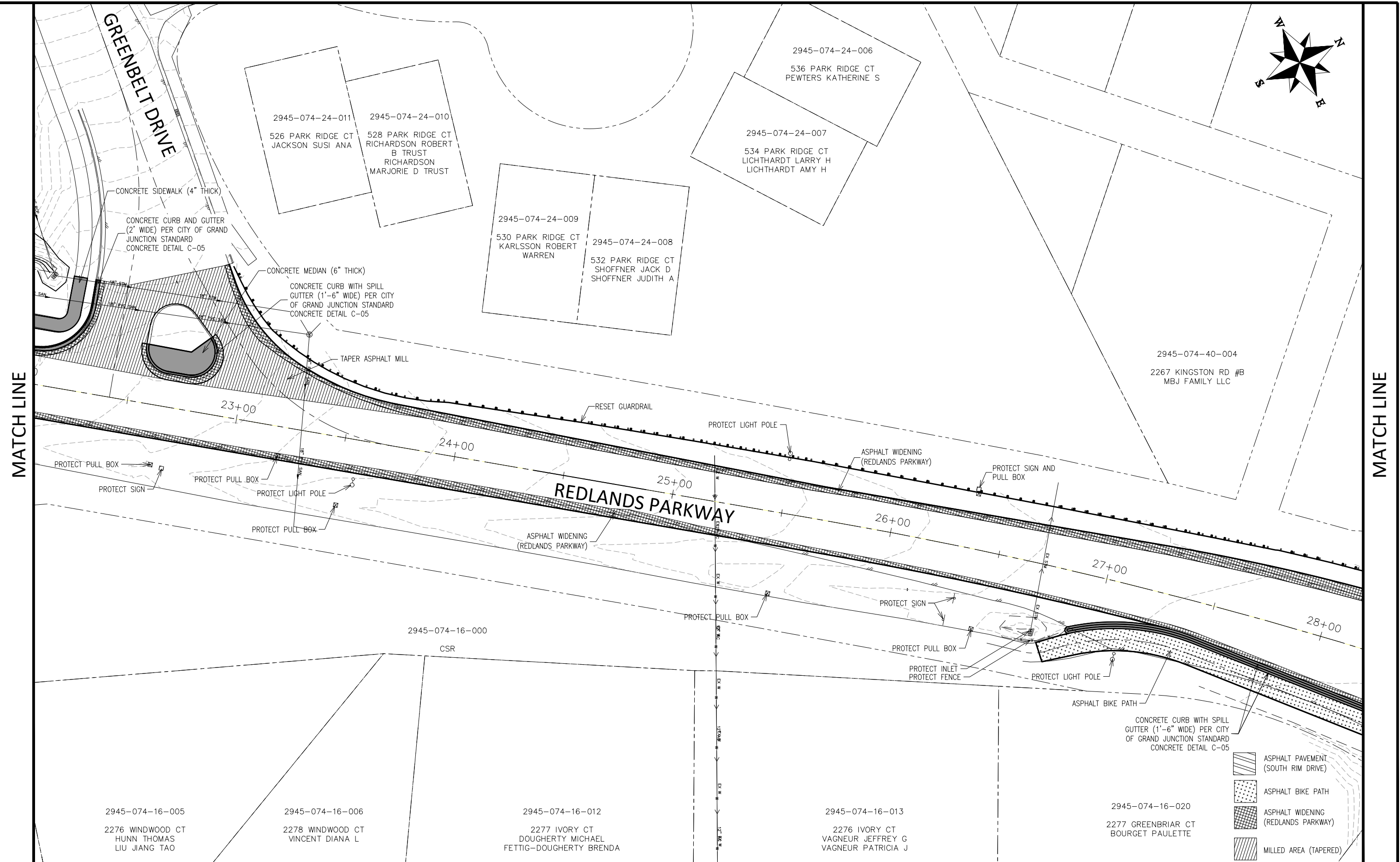
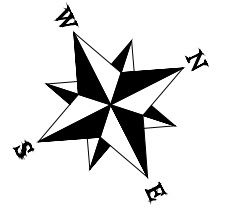
- ASPHALT PAVEMENT (SOUTH RIM DRIVE)
- ASPHALT BIKE PATH
- ASPHALT WIDENING (REDLANDS PARKWAY)
- MILLED AREA (TAPERED)

REVISION	DESCRIPTION	DATE	DRAWN BY	DATE
REVISION $\Delta$ REV 1			JOE	2030
REVISION $\Delta$ REV 2			JOE	2030
REVISION $\Delta$ REV 3			JOE	2030
REVISION $\Delta$ REV 4			JOE	2030



**PUBLIC WORKS  
ENGINEERING DIVISION**  
PROJECT NO. -----

**REDLANDS PARKWAY OVERLAY IMPROVEMENTS  
IMPROVEMENT PLAN**  
May 13, 2022



REVISION	DESCRIPTION	DATE	DRAWN BY	DATE	SCALE
REVISION A REV 1			JOE	2030	
REVISION B REV 2			JOE	2030	
REVISION C REV 3			JOE	2030	
REVISION D REV 4			JOE	2030	



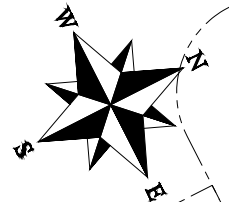
**PUBLIC WORKS  
ENGINEERING DIVISION**  
PROJECT NO. ---

**REDLANDS PARKWAY OVERLAY IMPROVEMENTS  
IMPROVEMENT PLAN**  
May 13, 2022

N:\Eng\Proj\F000133 (Redlands Parkway)\60CAD\DESIGN\IMPROVEMENT PLAN.DWG - PLOTTED 5/13/2022 11:31:08 AM

2945-074-22-025

BLUFFS WEST EST  
PROPERTY OWNERS  
ASSOC INC

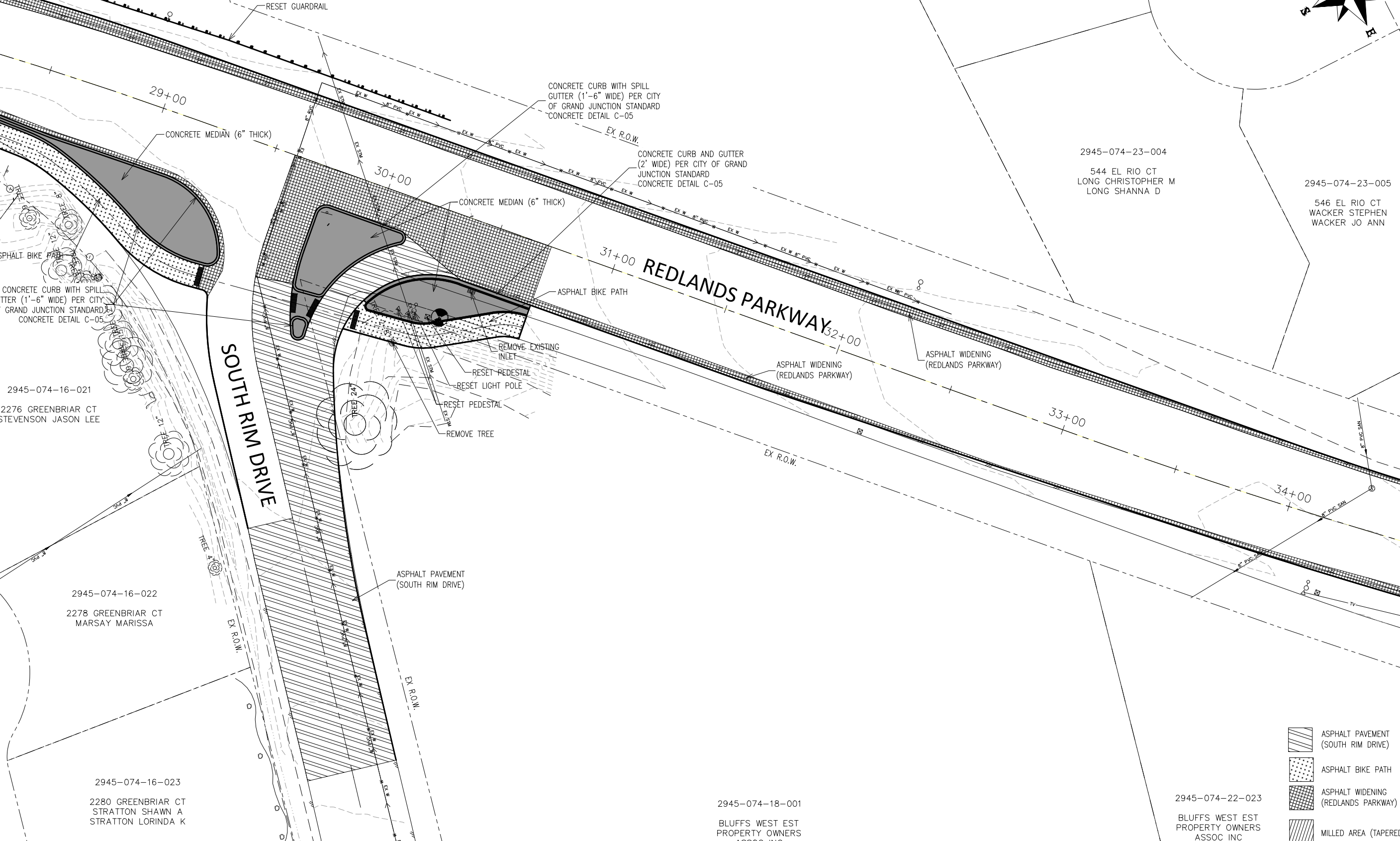


2945-074-23-004

544 EL RIO CT  
LONG CHRISTOPHER M  
LONG SHANNA D

2945-074-23-005

546 EL RIO CT  
WACKER STEPHEN  
WACKER JO ANN



MATCH LINE

MATCH LINE

2945-074-16-021

2276 GREENBRIAR CT  
STEVENSON JASON LEE

2945-074-16-022

2278 GREENBRIAR CT  
MARSAY MARISSA

2945-074-16-023





2280 GREENBRIAR CT  
STRATTON SHAWN A  
STRATTON LORINDA K

2945-074-18-001

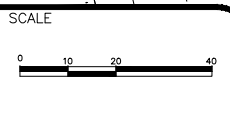
BLUFFS WEST EST  
PROPERTY OWNERS  
ASSOC INC

2945-074-22-023

BLUFFS WEST EST  
PROPERTY OWNERS  
ASSOC INC

-  ASPHALT PAVEMENT (SOUTH RIM DRIVE)
-  ASPHALT BIKE PATH
-  ASPHALT WIDENING (REDLANDS PARKWAY)
-  MILLED AREA (TAPERED)

REVISION	DESCRIPTION	DATE	DRAWN BY	DATE
REVISION Δ REV 1			JOE	2030
REVISION Δ REV 2			JOE	2030
REVISION Δ REV 3			JOE	2030
REVISION Δ REV 4			JOE	2030



PUBLIC WORKS  
ENGINEERING DIVISION  
PROJECT NO. ----

REDLANDS PARKWAY OVERLAY IMPROVEMENTS  
IMPROVEMENT PLAN  
May 13, 2022

N:\Eng\Proj\F000133 (Redlands Parkway)\60CAD\DESIGN\IMPROVEMENT PLAN.DWG - PLOTTED 5/13/2022 11:31:13 AM

2945-074-23-005

546 EL RIO CT  
WACKER STEPHEN G  
WACKER JO ANN

2945-074-22-026

2285 EL RIO DR  
MCCAW DOUGLAS C II  
MCCAW MELINDA R

2945-071-33-009

553 RIO BORDE CT  
JEPSON KIMMER L  
JEPSON PETER L

2945-071-33-000

CONCRETE CURB AND GUTTER  
(2' WIDE) PER CITY OF GRAND  
JUNCTION STANDARD  
CONCRETE DETAIL C-05

TAPER ASPHALT MILL

RIO LINDA LANE

MATCH LINE

MATCH LINE

35+00

36+00

37+00

REDLANDS PARKWAY

38+00

39+00





40+00

ASPHALT WIDENING  
(REDLANDS PARKWAY)

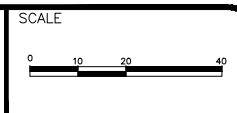
ASPHALT WIDENING  
(REDLANDS PARKWAY)

2945-074-22-023

BLUFFS WEST EST PROPERTY  
OWNERS ASSOC INC

-  ASPHALT PAVEMENT  
(SOUTH RIM DRIVE)
-  ASPHALT BIKE PATH
-  ASPHALT WIDENING  
(REDLANDS PARKWAY)
-  MILLED AREA (TAPERED)

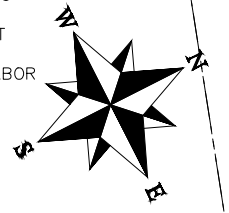
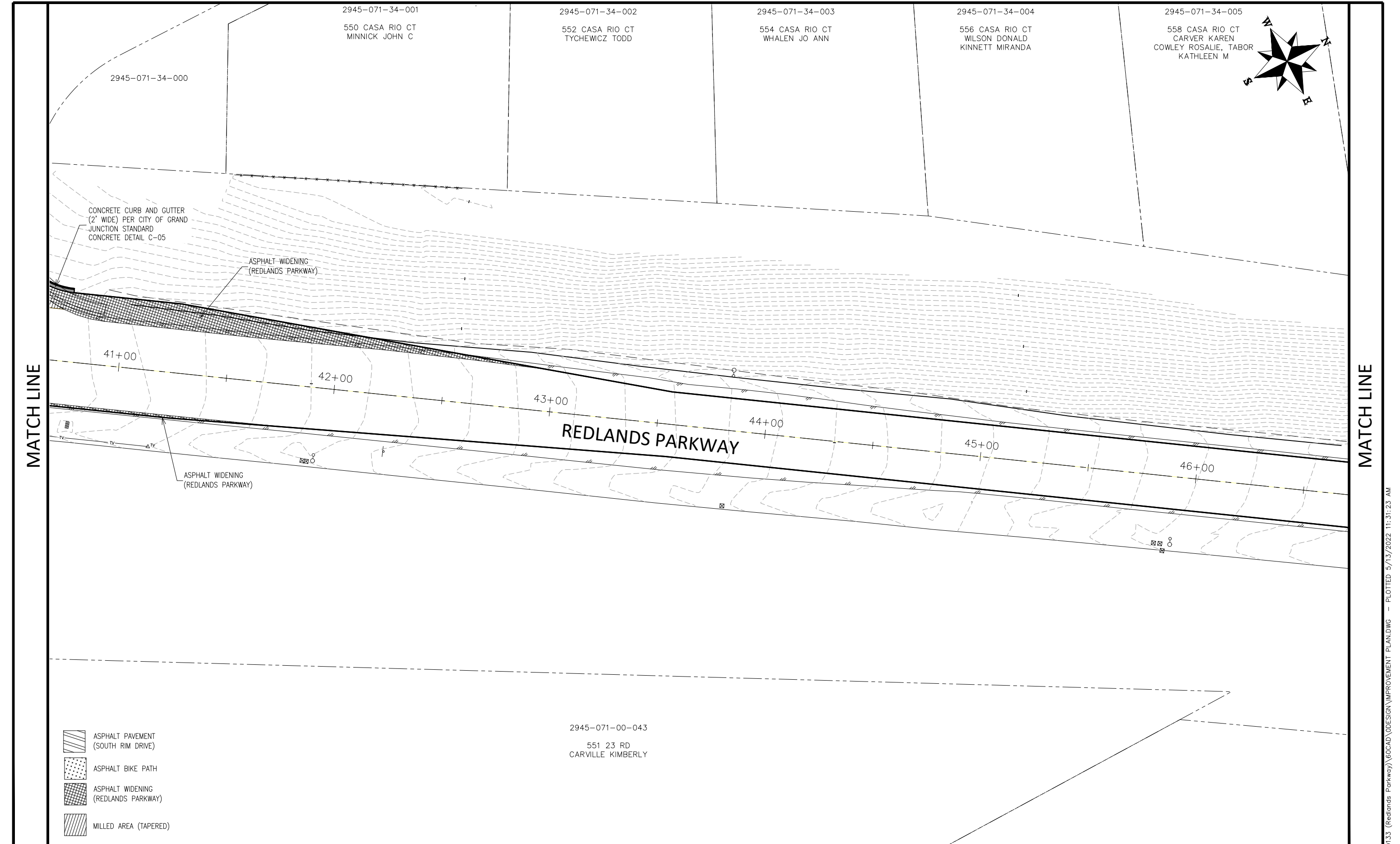
REVISION	DESCRIPTION	DATE	DRAWN BY	DATE
REVISION $\Delta$ REV 1			JOE	2030
REVISION $\Delta$ REV 2			JOE	2030
REVISION $\Delta$ REV 3			JOE	2030
REVISION $\Delta$ REV 4			JOE	2030



PUBLIC WORKS  
ENGINEERING DIVISION  
PROJECT NO. ----

REDLANDS PARKWAY OVERLAY IMPROVEMENTS  
IMPROVEMENT PLAN  
May 13, 2022

N:\Eng\Proj\F000133 (Redlands Parkway)\60CAD\DESIGN\IMPROVEMENT PLAN.DWG - PLOTTED 5/13/2022 11:31:18 AM

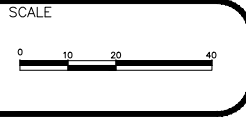


MATCH LINE

MATCH LINE

- ASPHALT PAVEMENT  
(SOUTH RIM DRIVE)
- ASPHALT BIKE PATH
- ASPHALT WIDENING  
(REDLANDS PARKWAY)
- MILLED AREA (TAPERED)

REVISION	DESCRIPTION	DATE	DRAWN BY	DATE
REVISION $\Delta$ REV 1			JOE	2030
REVISION $\Delta$ REV 2			JOE	2030
REVISION $\Delta$ REV 3			JOE	2030
REVISION $\Delta$ REV 4			JOE	2030



**PUBLIC WORKS  
ENGINEERING DIVISION**  
PROJECT NO. -----

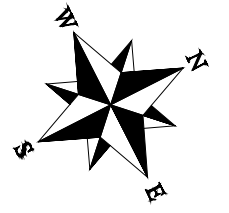
**REDLANDS PARKWAY OVERLAY IMPROVEMENTS  
IMPROVEMENT PLAN**  
May 13, 2022

N:\Eng\Proj\F000133 (Redlands Parkway)\60CAD\DESIGN\IMPROVEMENT PLAN.DWG - PLOTTED 5/13/2022 11:31:23 AM



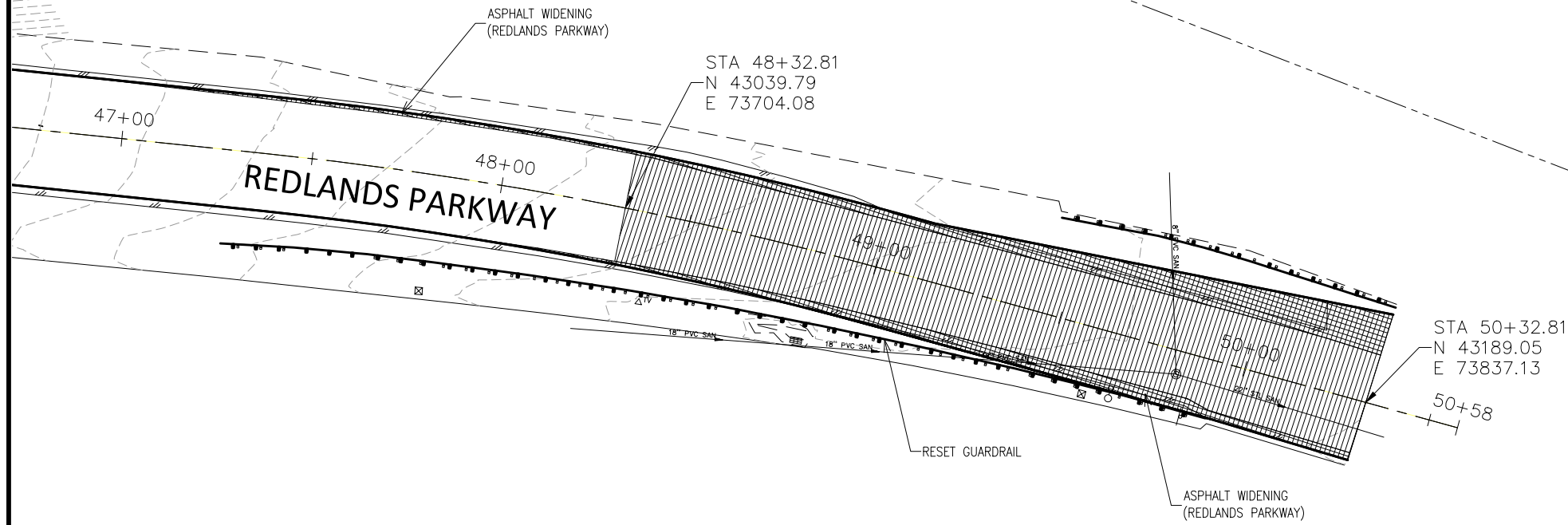
2945-071-34-006  
560 CASA RIO CT  
CHRISTIANSON JULIE A

2945-071-34-024  
564 CASA RIO CT  
NOURSE V K  
NOURSE JULIE A







MATCH LINE

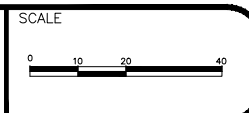
MATCH LINE



2945-082-00-070  
562 BLUFF CT  
RAMONA L OSBORN LIVING TRUST

-  ASPHALT PAVEMENT (SOUTH RIM DRIVE)
-  ASPHALT BIKE PATH
-  ASPHALT WIDENING (REDLANDS PARKWAY)
-  MILLED AREA (TAPERED)

REVISION	DESCRIPTION	DATE	DRAWN BY	DATE
REV 1			JOE	2030
REV 2			JOE	2030
REV 3			JOE	2030
REV 4			JOE	2030



**PUBLIC WORKS  
ENGINEERING DIVISION**  
PROJECT NO. -----

**REDLANDS PARKWAY OVERLAY IMPROVEMENTS  
IMPROVEMENT PLAN**  
May 13, 2022