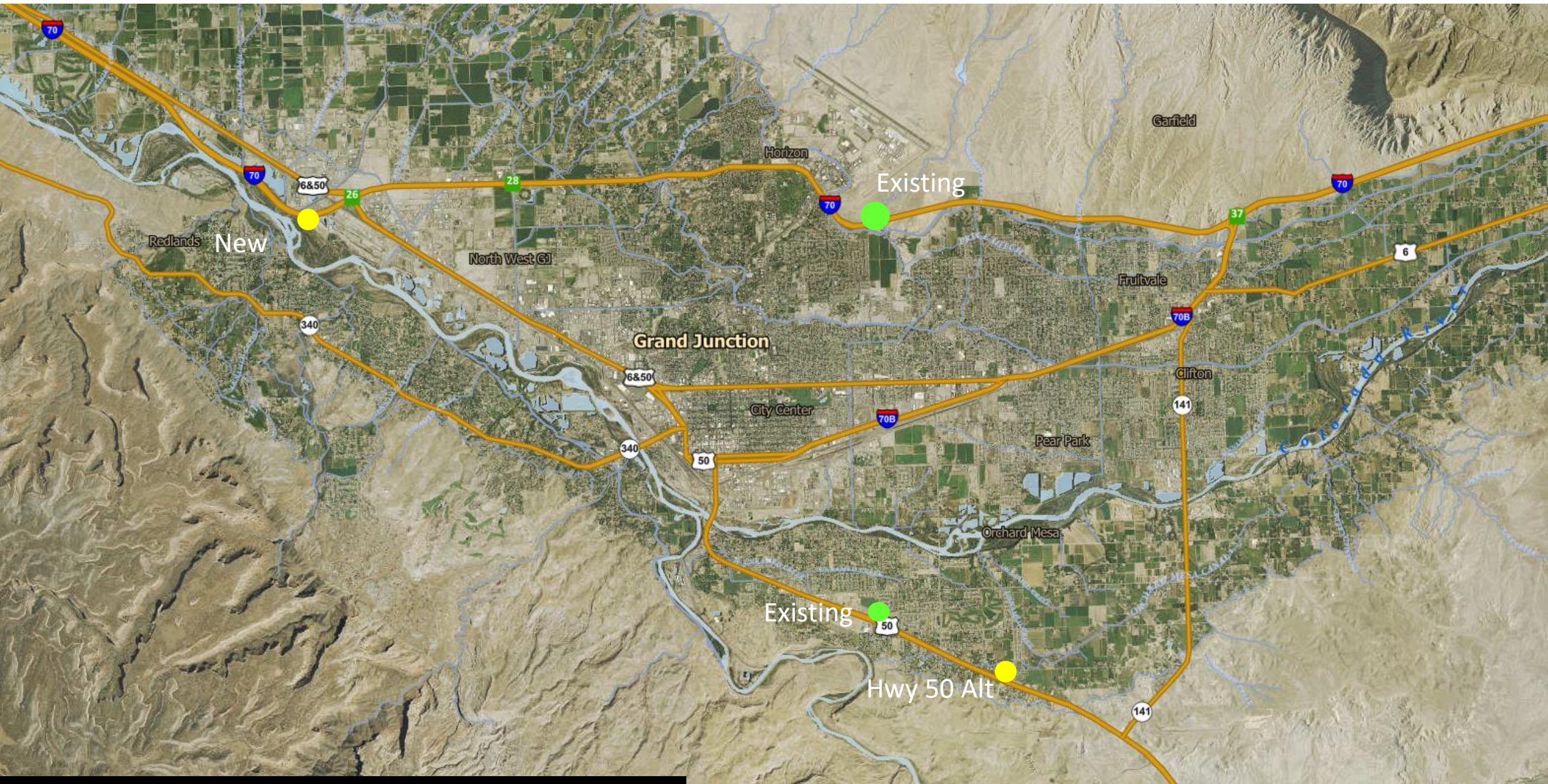


# Grand Junction Welcome Sign

SPECS

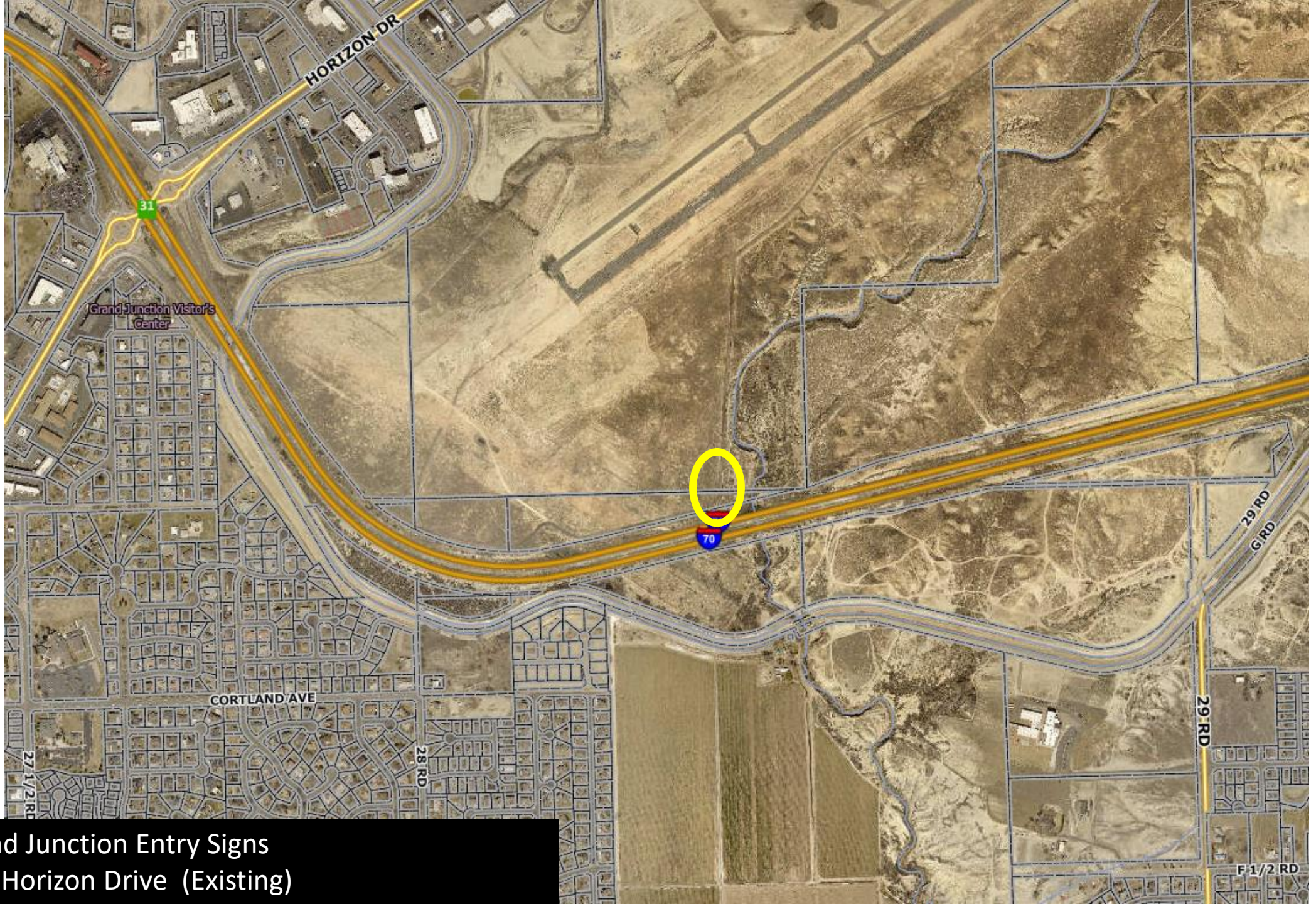






City of Grand Junction Entry Signs





City of Grand Junction Entry Signs  
I-70 East of Horizon Drive (Existing)





City of Grand Junction Entry Signs  
I-70 East of Horizon Drive (Existing)



City of Grand Junction Entry Signs  
I-70 East of Horizon Drive (Existing)





Access via Gate #13  
Grand Junction Regional Airport

City of Grand Junction Entry Signs  
I-70 East of Horizon Drive (Existing) - Site #1



### Design Narrative

- Nod to our railroad and industrial history
- Two rivers converging is represented by the railroad tracks
- They will be lit with a light blue at night to add a pop of color and further nod to rivers
- The font is not our destination brand font, but similar
- It's meant to be avant-garde, look like it's floating, and be very original



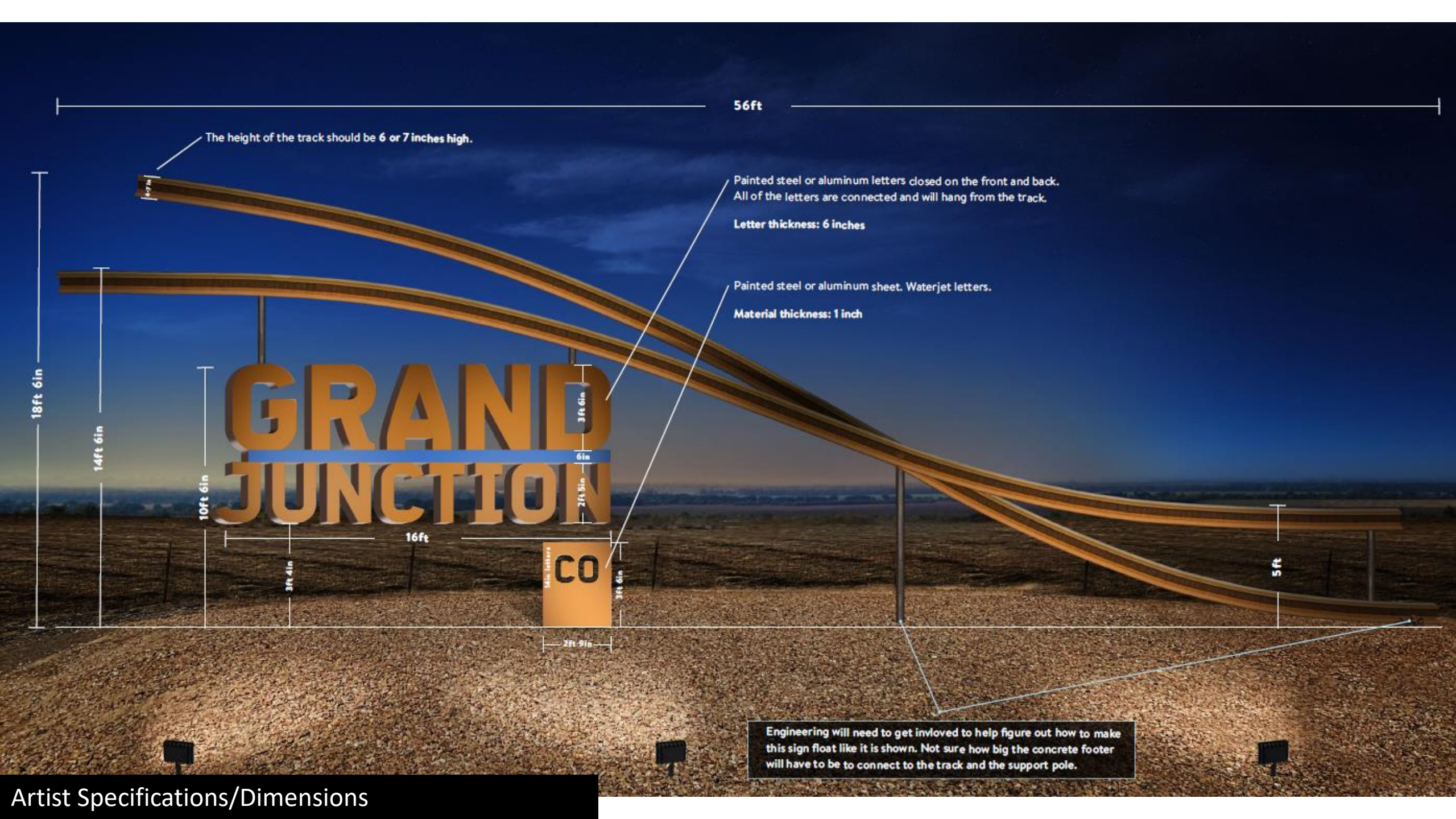
Artist Rendering





Artist Rendering – size comparison to existing





56ft

The height of the track should be 6 or 7 inches high.

Painted steel or aluminum letters closed on the front and back. All of the letters are connected and will hang from the track.

Letter thickness: 6 inches

Painted steel or aluminum sheet. Waterjet letters.

Material thickness: 1 inch

18ft 6in

14ft 6in

10ft 6in

3ft 4in

16ft

3ft 6in

6in

2ft 5in


3ft 6in

2ft 9in

5ft

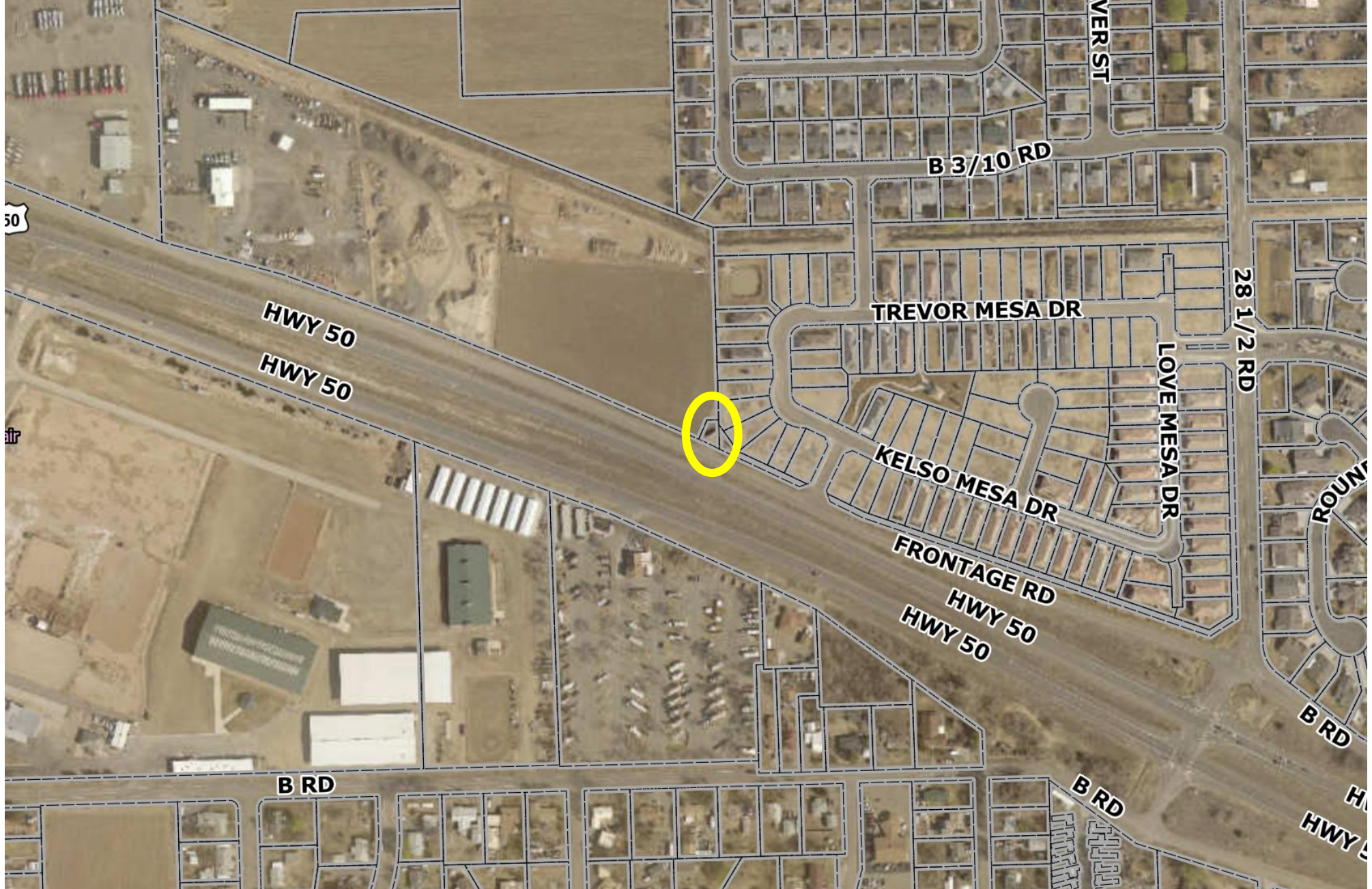
Engineering will need to get involved to help figure out how to make this sign float like it is shown. Not sure how big the concrete footer will have to be to connect to the track and the support pole.



An artist rendering of a sign for Grand Junction, CO. The sign consists of two curved tracks, one above the other, that meet at a junction. The tracks are illuminated with a soft blue LED light. The text "GRAND JUNCTION" is displayed in large, bold, orange letters, and "CO" is displayed in a smaller orange box below it. The sign is set against a dark blue sky and a landscape of dry, brown earth. A text box in the upper right corner provides details about the lighting design.

A soft blue LED light running the length of both tracks symbolizing the junction of the two rivers. LED to be placed just under the top track in the gap. Frontside only. LED spot lights on the ground will light the rest of the sign.





City of Grand Junction Entry Signs  
Orchard Mesa west of 28 ½ Rd (North of fairgrounds) – Westbound Highway 50 (Existing)





City of Grand Junction Entry Signs  
Orchard Mesa west of 28 ½ Rd (North of fairgrounds) – Westbound Highway 50 (Existing)



With subdivision to the east – sign seems less prominent than when originally constructed



City of Grand Junction Entry Signs  
Orchard Mesa west of 28 ½ Rd (North of fairgrounds) – Westbound Highway 50 (Existing)



Alternative Hwy 50 Location – 30 Road



City of Grand Junction Entry Signs – Orchard Mesa at 31 Road – Westbound Highway 50 - Orchard Mesa Potential Alternative Site – 30 Road



Alternative Hwy 50 Location – 30 Road



City of Grand Junction Entry Signs –  
Orchard Mesa at 31 Road – Westbound Highway 50 - Orchard Mesa Potential Alternative Site – 30 Road





City of Grand Junction Entry Signs – potential site  
West side of Exit 26– Eastbound I-70 (NEW)





City of Grand Junction Entry Signs – potential site  
West side of Exit 26– Eastbound I-70 (NEW)



## Schedule

- Design/Build RFP available 6/17
- Proposals Due - 7/18
- Final Negotiations - 8/2
- Council Award 8/17
- Construction complete 12/16/22

