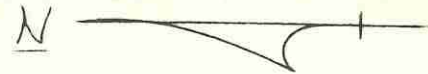


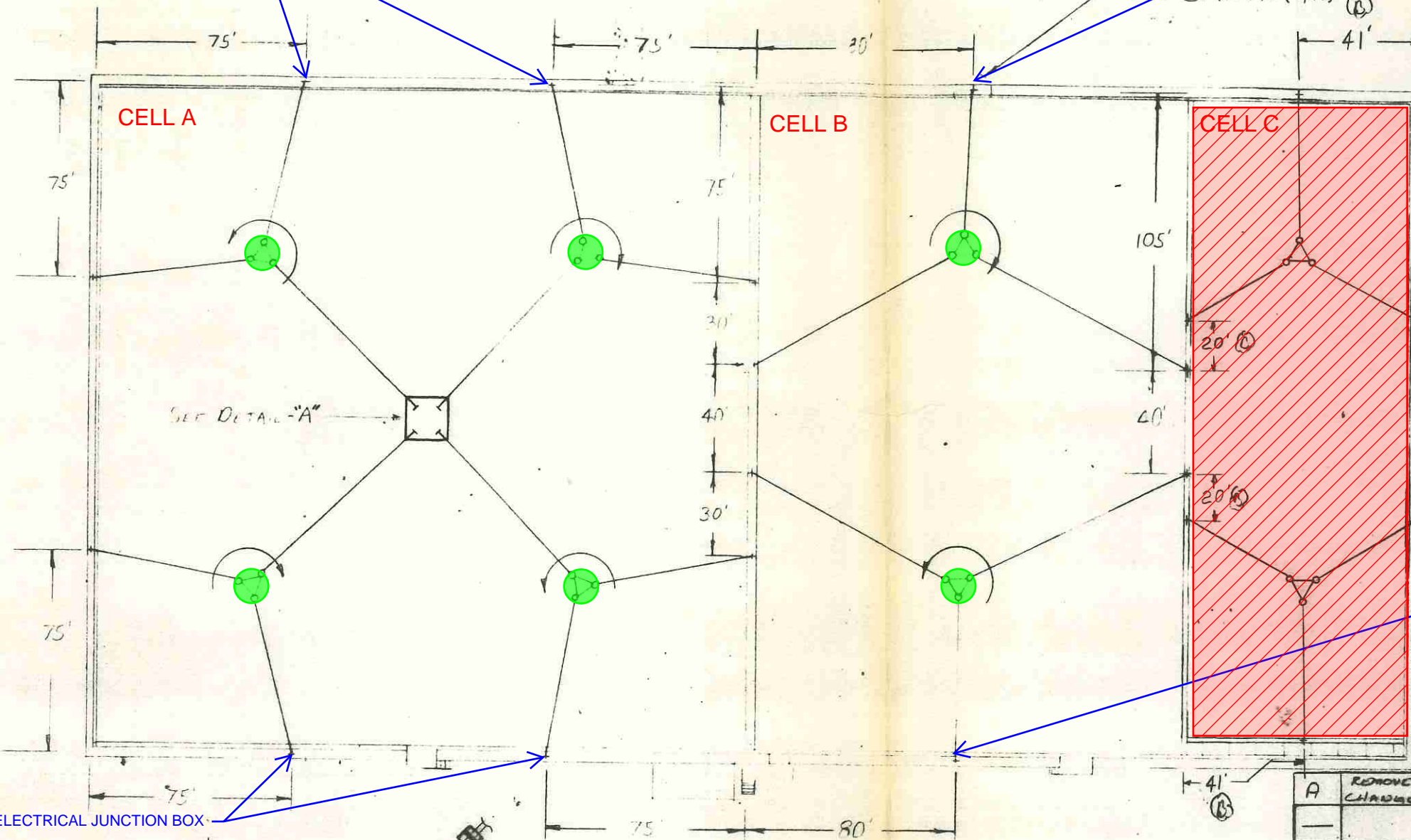
SYMBOL 741-057

ITEM	QTY.	MATERIAL	DESCRIPTION	MAT'L. WT.	VENDOR WT.
------	------	----------	-------------	------------	------------



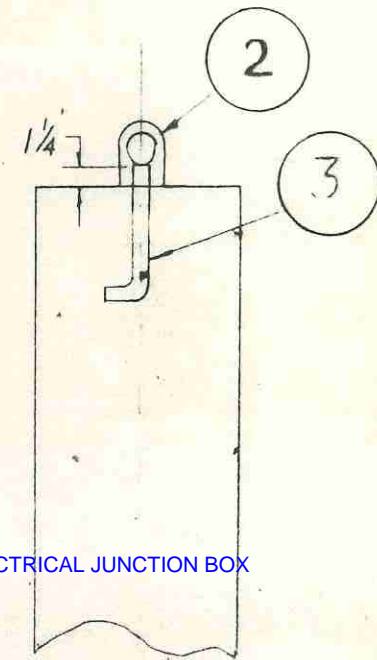
ELECTRICAL JUNCTION BOX

ELECTRICAL JUNCTION BOX



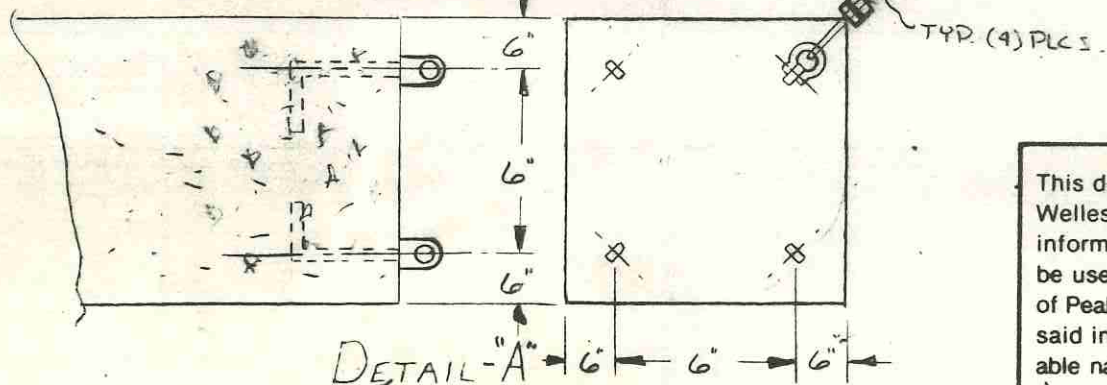
**NOTES:**

- ● TO BE REPLACED
- AERATOR/MIXERS ARE TO BE REPLACED IN CELLS A & B
- AERATOR/MIXERS WILL NOT BE REPLACED IN THE FURTHEST SOUTH BASIN, CELL C



DETAIL-B

ELECTRICAL JUNCTION BOX



DETAIL-A

REF.	ADDED ANCHORAGE DIM.	OGG 97	DLS	RHM 3-16-81
A	REMOVED DIM'S & CHANGED VIEW "A"	06511	TLB	RHM 1/20/81
	ISSUED	ER-3238	DLS	RHM 1/24/80
	REVISION	CHANGE ORDER NO.	BY	APP. DATE

APPROX. MATL. WEIGHT	74	LBS.
APPROX. NET WEIGHT	74	LBS.

FRACTIONAL DIMENSIONS ALL TO BE ± UNLESS OTHERWISE SPEC.		
TOLERANCES APPLY TO MACHINED SURFACES		
DIM. SHOWN AS		TOL.
0.0	0.000	± .060
0.00	0.000	± .015
0.000	0.000	± .003

TITLE MODEL 62-56 (20HP) FLOATING SIMCAR AERATOR		SCALE	JOB NO.
MAT'L SEE B/M		DRWN. BY DLS	W-110004-1
Peabody Welles ROSCOE, ILLINOIS		APP. BY DLS	DATE 11-12-80
SYMBOL 741-057		DATE 11-12-80	
		2 OF 2	

This document is the exclusive property of Peabody Welles and may not be reproduced, nor may the information contained therein or derivable therefrom be used in any manner, except by written permission of Peabody Welles. The proprietary rights to the aforesaid information, both of a patentable and unpatentable nature, are expressly reserved to Peabody Welles.