

# Attachment C Construction Drawings

## CITY OF GRAND JUNCTION 2022 WATERLINE REPLACEMENT - PHASE 1 GRAND JUNCTION, COLORADO BID DOCUMENTS

### CONTACTS

OWNER:	CITY OF GRAND JUNCTION 333 WEST AVENUE, BUILDING C GRAND JUNCTION, CO 81501	JOHN EKLAND, P.E. 970-224-1558 JOHNE@CITY.ORG
ENGINEER:	JVA, INC. 817 COLORADO AVENUE, SUITE 301 GLENWOOD SPRINGS, CO 81601	COOPER BEST, P.E. 970-404-3003 CBEST@JVA.JVA.COM
SURVEYOR:	CITY OF GRAND JUNCTION 333 WEST AVENUE, BUILDING C GRAND JUNCTION, CO 81505	RENEE PARENT, P.E. PLS, CFedS 970-256-4003 RENEEP@CITY.ORG



JVA, Inc. 817 Colorado Ave., Suite 301  
Glenwood Springs, CO Zip 81601  
970.404.3100  
www.jvajva.com  
Boulder • Fort Collins • Winter Park  
Glenwood Springs • Denver

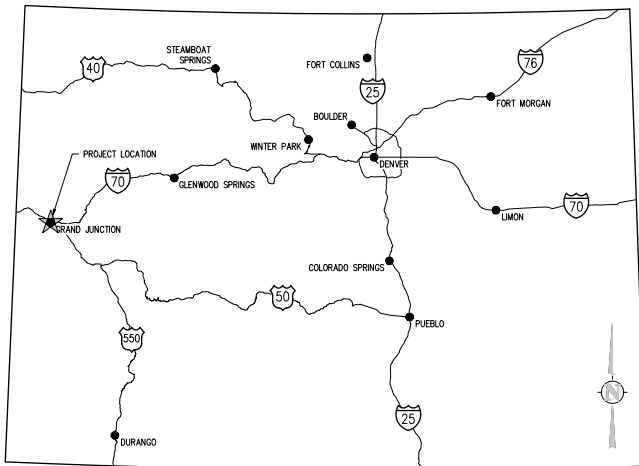
AUGUST 2022

PREPARED UNDER THE SUPERVISION OF

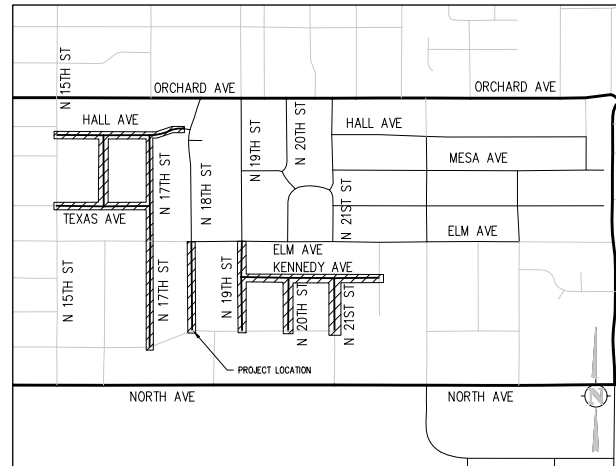
JVA, Inc.

### DRAWING INDEX

SHEET NO.	TITLE
G0.0	COVER SHEET
G0.1	NOTES, LEGENDS, AND ABBREVIATIONS
CE1.0	EROSION CONTROL NOTES
CE1.1	EROSION CONTROL NOTES
CE1.2	EROSION CONTROL NOTES
C0.0	OVERALL UTILITY PLAN
C1.0	HALL AVE WATER PLAN & PROFILE
C1.1	HALL AVE WATER PLAN & PROFILE
C1.2	HALL AVE WATER PLAN & PROFILE
C2.0	TEXAS AVE WATER PLAN & PROFILE
C2.1	TEXAS AVE WATER PLAN & PROFILE
C3.0	KENNEDY AVE WATER PLAN & PROFILE
C3.1	KENNEDY AVE WATER PLAN & PROFILE
C3.2	KENNEDY AVE WATER PLAN & PROFILE
C4.0	N 16TH ST WATER PLAN & PROFILE
C4.1	N 16TH ST WATER PLAN & PROFILE
C5.0	N 17TH ST WATER PLAN & PROFILE
C5.1	N 17TH ST WATER PLAN & PROFILE
C5.2	N 17TH ST WATER PLAN & PROFILE
C5.3	N 17TH ST WATER PLAN & PROFILE
C5.4	N 17TH ST WATER PLAN & PROFILE
C6.0	N 18TH ST WATER PLAN & PROFILE
C6.1	N 18TH ST WATER PLAN & PROFILE
C7.0	N 19TH ST WATER PLAN & PROFILE
C7.1	N 19TH ST WATER PLAN & PROFILE
C8.0	N 20TH ST WATER PLAN & PROFILE
C8.1	N 20TH ST WATER PLAN & PROFILE
C9.0	N 21ST ST WATER PLAN & PROFILE
C9.1	N 21ST ST WATER PLAN & PROFILE



VICINITY MAP  
NTS



PROJECT LOCATION MAP  
NTS





**EC-8 Temporary Outlet Protection (TOP)**

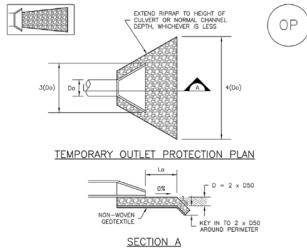


TABLE OF-1. TEMPORARY OUTLET PROTECTION SIZING TABLE

PIPE DIAMETER, D (INCHES)	DISCHARGE Q (CFS)	APPROX. LENGTH, L (FT)	RRIPRAP ROCK DIAMETER, B (INCHES)
8	2.5	10	6
12	10	10	4
18	10	10	6
	20	15	12
	40	25	16
24	40	25	9
	60	30	12
	80	30	16

OP-1. TEMPORARY OUTLET PROTECTION

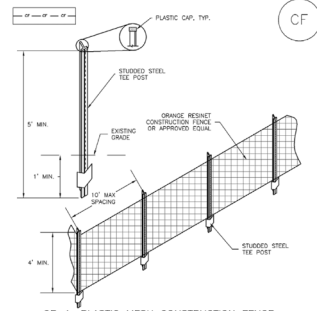
TOP-2 Urban Drainage and Flood Control District Urban Storm Drainage Criteria Manual Volume 3 November 2010

**Temporary Outlet Protection (TOP) EC-8**

- TEMPORARY OUTLET PROTECTION INSTALLATION NOTES**
1. SEE PLAN VIEW FOR LOCATION OF OUTLET PROTECTION.
  2. DETAIL IS INTENDED FOR PIPES WITH SLOPE < 1%. ADDITIONAL EVALUATION OF RIPRAP SIZES AND OUTLET PROTECTION DIMENSIONS REQUIRED FOR STEEPER SLOPES.
  3. TEMPORARY OUTLET PROTECTION INFORMATION IS FOR OUTLETS INTENDED TO BE UTILIZED LESS THAN 2 HOURS.
- TEMPORARY OUTLET PROTECTION INSPECTION AND MAINTENANCE NOTES**
1. INSPECT BMPs EACH WORKDAY AND MAINTAIN THEM IN EFFECTIVE OPERATING CONDITION. MAINTENANCE OF BMPs SHOULD BE PRACTICE, NOT REACTIVE. INSPECT BMPs AS SOON AS POSSIBLE (AND ALWAYS WITHIN 24 HOURS) FOLLOWING A STORM THAT CAUSES SURFACE EROSION, AND PERFORM NECESSARY MAINTENANCE.
  2. FREQUENT OBSERVATIONS AND MAINTENANCE ARE NECESSARY TO MAINTAIN BMPs IN EFFECTIVE OPERATING CONDITION. INSPECTIONS AND CORRECTIVE MEASURES SHOULD BE DOCUMENTED THOROUGHLY.
  3. WHERE BMPs HAVE FAILED, REPAIR OR REPLACEMENT SHOULD BE INITIATED UPON DISCOVERY OF THE FAILURE.
- NOTE: MANY JURISDICTIONS HAVE BMP DETAILS THAT VARY FROM IUDCD STANDARD DETAILS. CONSULT WITH LOCAL JURISDICTIONS AS TO WHICH DETAIL SHOULD BE USED WHEN DIFFERENCES ARE NOTED.
- DETAILS ADAPTED FROM MANUAL, COLORADO AND PROVIDED THROUGH COURTESY OF IUDCD.

November 2010 Urban Drainage and Flood Control District Urban Storm Drainage Criteria Manual Volume 3 TOP-3

**SM-3 Construction Fence (CF)**



CF-1. PLASTIC MESH CONSTRUCTION FENCE

- CONSTRUCTION FENCE INSTALLATION NOTES**
1. SEE PLAN VIEW FOR LOCATION OF CONSTRUCTION FENCE.
  2. CONSTRUCTION FENCE SHOWN SHALL BE INSTALLED PRIOR TO ANY LAND DISTURBING ACTIVITIES.
  3. CONSTRUCTION FENCE SHALL BE COMPOSED OF ORANGE, CONTRACTOR-GRADE MATERIAL THAT IS AT LEAST 4' HIGH. METAL POSTS SHOULD HAVE A PLASTIC CAP FOR SAFETY.
  4. STUCCO STEEL SEE POSTS SHALL BE UTILIZED TO SUPPORT THE CONSTRUCTION FENCE. MAXIMUM SPACING FOR STEEL POSTS SHALL BE 10'.
  5. CONSTRUCTION FENCE SHALL BE SECURELY FASTENED TO THE TOP, MIDDLE, AND BOTTOM OF EACH POST.

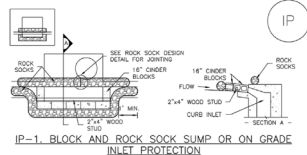
CF-2 Urban Drainage and Flood Control District Urban Storm Drainage Criteria Manual Volume 3 November 2010

**Construction Fence (CF) SM-3**

- CONSTRUCTION FENCE MAINTENANCE NOTES**
1. INSPECT BMPs EACH WORKDAY AND MAINTAIN THEM IN EFFECTIVE OPERATING CONDITION. MAINTENANCE OF BMPs SHOULD BE PRACTICE, NOT REACTIVE. INSPECT BMPs AS SOON AS POSSIBLE (AND ALWAYS WITHIN 24 HOURS) FOLLOWING A STORM THAT CAUSES SURFACE EROSION, AND PERFORM NECESSARY MAINTENANCE.
  2. FREQUENT OBSERVATIONS AND MAINTENANCE ARE NECESSARY TO MAINTAIN BMPs IN EFFECTIVE OPERATING CONDITION. INSPECTIONS AND CORRECTIVE MEASURES SHOULD BE DOCUMENTED THOROUGHLY.
  3. WHERE BMPs HAVE FAILED, REPAIR OR REPLACEMENT SHOULD BE INITIATED UPON DISCOVERY OF THE FAILURE.
  4. CONSTRUCTION FENCE SHALL BE REPAIRED OR REPLACED WHEN THERE ARE SIGNS OF DAMAGE SUCH AS RIPS OR SAGS. CONSTRUCTION FENCE IS TO REMAIN IN PLACE UNTIL THE UPSTREAM DISTURBED AREA IS STABILIZED AND APPROVED BY THE LOCAL JURISDICTION.
  5. WHEN CONSTRUCTION FENCES ARE REMOVED, ALL DISTURBED AREAS ASSOCIATED WITH THE INSTALLATION, MAINTENANCE, AND/OR REMOVAL OF THE FENCE SHALL BE COVERED WITH TOPSOIL, SEEDING AND MULCHED, OR OTHERWISE STABILIZED AS APPROVED BY LOCAL JURISDICTIONS.
- NOTE: MANY JURISDICTIONS HAVE BMP DETAILS THAT VARY FROM IUDCD STANDARD DETAILS. CONSULT WITH LOCAL JURISDICTIONS AS TO WHICH DETAIL SHOULD BE USED WHEN DIFFERENCES ARE NOTED.
- DETAILS ADAPTED FROM MANUAL, COLORADO, NOT AVAILABLE IN AUTOCAD.

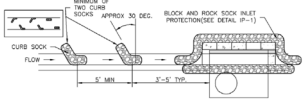
November 2010 Urban Drainage and Flood Control District Urban Storm Drainage Criteria Manual Volume 3 CF-3

**SC-6 Inlet Protection (IP)**



IP-1. BLOCK AND ROCK SOCK SUMP OR ON GRADE INLET PROTECTION

- BLOCK AND CURB SOCK INLET PROTECTION INSTALLATION NOTES**
1. SEE ROCK SOCK DESIGN DETAIL FOR INSTALLATION REQUIREMENTS.
  2. CONCRETE "TOE" BLOCKS SHALL BE Laid ON THEIR SIDES AROUND THE INLET IN A SINGLE ROW, ABUTTING ONE ANOTHER WITH THE OPEN END FACING AWAY FROM THE CURB.
  3. ORANGE BARS SHALL BE PLACED AROUND CONCRETE BLOCKS, CLOSELY ABUTTING ONE ANOTHER AND JOINED TOGETHER IN ACCORDANCE WITH ROCK SOCK DESIGN DETAIL.

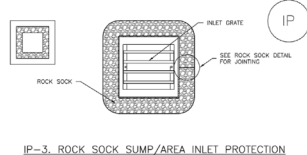


IP-2. CURB SOCK SOCKS UPSTREAM OF INLET PROTECTION

- CURB SOCK SOCK INLET PROTECTION INSTALLATION NOTES**
1. SEE ROCK SOCK DESIGN DETAIL INSTALLATION REQUIREMENTS.
  2. PLACEMENT OF THE SOCK SHALL BE APPROXIMATELY 30 DEGREES FROM PERPENDICULAR IN THE OPPOSITE DIRECTION OF FLOW.
  3. SOCKS ARE TO BE FLUSH WITH THE CURB AND SPACED A MINIMUM OF 3 FEET APART.
  4. AT LEAST TWO CURB SOCKS IN SERIES ARE REQUIRED UPSTREAM OF ON-GRADE INLETS.

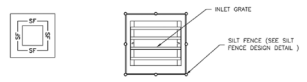
IP-4 Urban Drainage and Flood Control District Urban Storm Drainage Criteria Manual Volume 3 August 2013

**Inlet Protection (IP) SC-6**



IP-3. ROCK SOCK SUMP/AREA INLET PROTECTION

- ROCK SOCK SUMP/AREA INLET PROTECTION INSTALLATION NOTES**
1. SEE ROCK SOCK DESIGN DETAIL FOR INSTALLATION REQUIREMENTS.
  2. STRAIN WATLES/SEDIMENT CONTROL LOSS MAY BE USED IN PLACE OF ROCK SOCKS FOR INLETS IN PERVIOUS AREAS. INSTALL PER SEDIMENT CONTROL LOG DETAIL.



IP-4. SILT FENCE FOR SUMP INLET PROTECTION

- SILT FENCE INLET PROTECTION INSTALLATION NOTES**
1. SEE SILT FENCE DESIGN DETAIL FOR INSTALLATION REQUIREMENTS.
  2. SOCKS SHALL BE PLACED AT EACH CORNER OF THE INLET AND AROUND THE EDGES AT A MAXIMUM SPACING OF 3 FEET.
  3. STRAIN WATLES/SEDIMENT CONTROL LOSS MAY BE USED IN PLACE OF SILT FENCE FOR INLETS IN PERVIOUS AREAS. INSTALL PER SEDIMENT CONTROL LOG DETAIL.

August 2013 Urban Drainage and Flood Control District Urban Storm Drainage Criteria Manual Volume 3 IP-5

**SC-6 Inlet Protection (IP)**

- GENERAL INLET PROTECTION INSTALLATION NOTES**
1. SEE PLAN VIEW FOR LOCATION OF INLET PROTECTION.
  - TYPE OF INLET PROTECTION (IP-1, IP-2, IP-3, IP-4, IP-5, IP-6)
  3. INLET PROTECTION SHALL BE INSTALLED IMMEDIATELY AFTER INLET CONSTRUCTION OR PAVING IS COMPLETE (TYPICALLY WITHIN 48 HOURS) IF A RAINFALL/STORM EVENT IS FORECAST. INSTALL INLET PROTECTION PRIOR TO STREET OF TRAFFIC.
  4. MANY JURISDICTIONS HAVE BMP DETAILS THAT VARY FROM IUDCD STANDARD DETAILS. CONSULT WITH LOCAL JURISDICTIONS AS TO WHICH DETAIL SHOULD BE USED WHEN DIFFERENCES ARE NOTED.
- INLET PROTECTION MAINTENANCE NOTES**
1. INSPECT BMPs EACH WORKDAY AND MAINTAIN THEM IN EFFECTIVE OPERATING CONDITION. MAINTENANCE OF BMPs SHOULD BE PRACTICE, NOT REACTIVE. INSPECT BMPs AS SOON AS POSSIBLE (AND ALWAYS WITHIN 24 HOURS) FOLLOWING A STORM THAT CAUSES SURFACE EROSION, AND PERFORM NECESSARY MAINTENANCE.
  2. FREQUENT OBSERVATIONS AND MAINTENANCE ARE NECESSARY TO MAINTAIN BMPs IN EFFECTIVE OPERATING CONDITION. INSPECTIONS AND CORRECTIVE MEASURES SHOULD BE DOCUMENTED THOROUGHLY.
  3. WHERE BMPs HAVE FAILED, REPAIR OR REPLACEMENT SHOULD BE INITIATED UPON DISCOVERY OF THE FAILURE.
  4. SEDIMENT ACCUMULATED UPSTREAM OF INLET PROTECTION SHALL BE REMOVED AS NECESSARY TO MAINTAIN BMP EFFECTIVENESS. TYPICALLY WHEN STORAGE VOLUME REACHES 50% OF CAPACITY, A DEPTH OF 6" WHEN SILT FENCE IS USED, OR 4" OF THE HEIGHT FOR STRAW BALES.
  5. INLET PROTECTION IS TO REMAIN IN PLACE UNTIL THE UPSTREAM DISTURBED AREA IS PERMANENTLY STABILIZED, UNLESS THE LOCAL JURISDICTION APPROVES EARLIER REMOVAL OF INLET PROTECTION IN STREETS.
  6. WHEN INLET PROTECTION AT AREA INLETS IS REMOVED, THE DISTURBED AREA SHALL BE COVERED WITH TOP SOIL, SEEDING AND MULCHED, OR OTHERWISE STABILIZED IN A MANNER APPROVED BY THE LOCAL JURISDICTION.
- NOTE: MANY JURISDICTIONS HAVE BMP DETAILS THAT VARY FROM IUDCD STANDARD DETAILS. CONSULT WITH LOCAL JURISDICTIONS AS TO WHICH DETAIL SHOULD BE USED WHEN DIFFERENCES ARE NOTED.
- NOTE: THE DETAILS ILLUSTRATED WITH THIS FACT SHEET SHOW CONSERVATIVE, CONVENTIONAL METHODS OF INLET PROTECTION IN THE DENVER METROPOLITAN AREA. THERE ARE MANY PROPRIETARY INLET PROTECTION METHODS ON THE MARKET. LOCAL JURISDICTIONS SHOULD DISSEMINATE USE OF PROPRIETARY INLET PROTECTION METHODS, IN THE EVENT PROPRIETARY METHODS ARE USED, TO THE APPROVED DETAIL FROM THE MANUFACTURER MUST BE USED. THE BMP MUST BE INSTALLED AND MAINTAINED AS SHOWN IN THE MANUFACTURER'S DETAILS.
- NOTE: SOME MUNICIPALITIES DISALLOW OR PROHIBIT THE USE OF STRAW BALES FOR INLET PROTECTION. CONSULT WITH LOCAL JURISDICTION TO DETERMINE IF STRAW BALE INLET PROTECTION IS ACCEPTABLE.

IP-8 Urban Drainage and Flood Control District Urban Storm Drainage Criteria Manual Volume 3 August 2013

N:\VTD\10\10\10\Phase 1 - Erosion\2013-08-01\IP-06.dwg, 8/29/2013, 8:24 AM, WJ

REVISION	DESCRIPTION	DATE	DRAWN BY	DATE
REVISION A			ZCF	07.18.2022
REVISION B			LAL/ZCF	07.18.2022
REVISION C			JJM	07.18.2022
REVISION D				

SCALES: PLAN & PROFILE

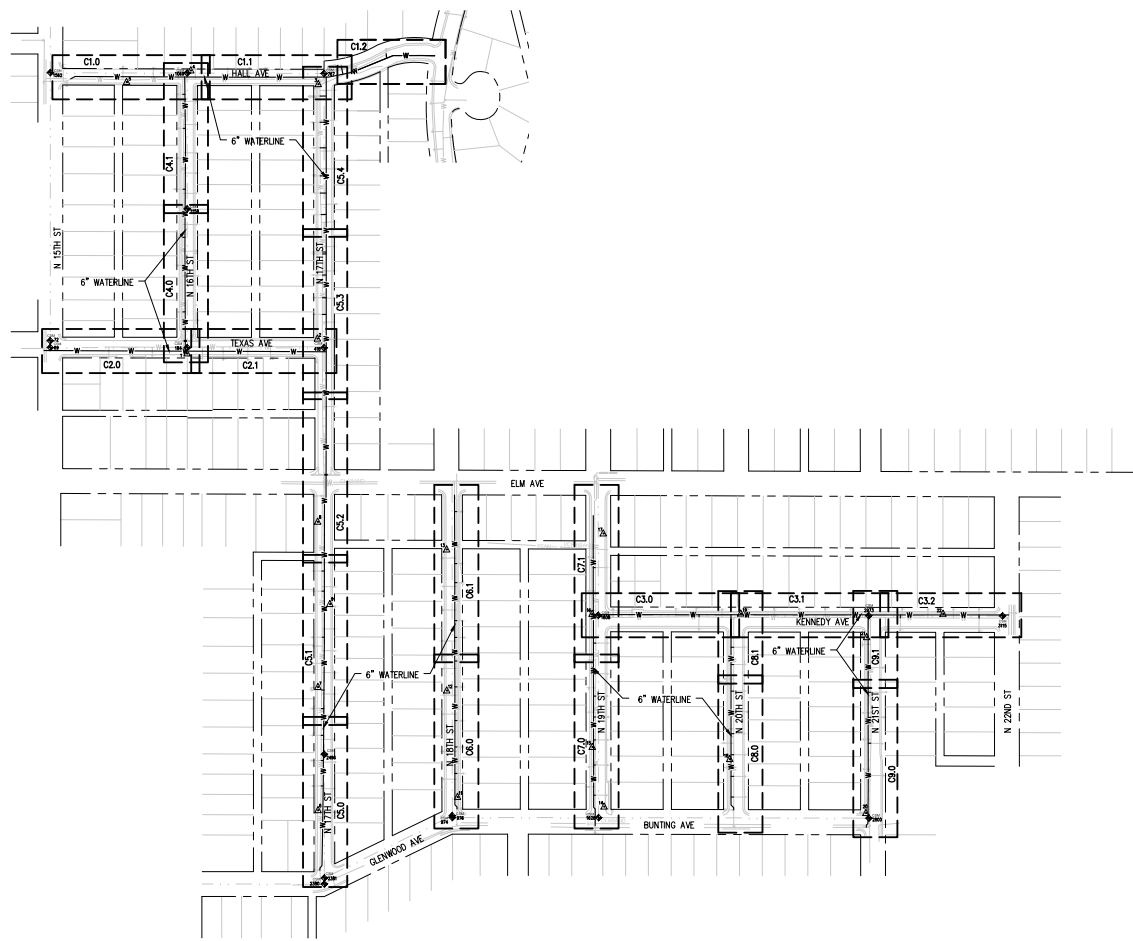


**2022 WATERLINE REPLACEMENT PROJECT - PHASE 1**

**EROSION CONTROL NOTES**

CE1.1





CONTROL POINT TABLE				
CONTROL POINT	DESCRIPTION	NORTHING	EASTING	ELEVATION
1	CP/16TH	41086.21	96354.86	4634.00
2	CP/17TH	41122.02	96669.27	4635.94
3	CP/17TH	41736.43	96671.37	4639.00
4	CP/16TH	41769.52	96363.59	4638.46
5	CP/ALLEY	41741.67	96208.48	4638.35
6	CP/CHURCH	39983.25	96670.86	4626.72
7	CP/1353	40280.74	96670.61	4629.78
8	CP/5 ELM	40678.82	96669.92	4631.65
9	CP/1400	40481.04	96699.47	4630.34
11	CP/18TH&BUNTING	40015.26	97007.59	4625.86
12	CP/1343 18TH	40272.37	96981.69	4626.96
13	CP/1421 18TH	40612.94	96981.33	4628.54
14	CP/19TH&BUNTING	39992.11	97361.61	4623.41
15	CP/1323 19TH	40136.04	97333.17	4624.55
16	CP/19TH&KENNEDY	40457.54	97332.80	4626.76
17	CP/19TH&ELM	40651.49	97359.69	4628.43
18	CP/1313 20TH	40106.92	97665.17	4623.25
19	CP/20TH&KENNEDY	40458.05	97691.67	4625.30
20	CP/21ST&BUNTING	39976.42	97993.81	4621.06
21	CP/21ST&KENNEDY	40401.02	97995.68	4623.62
22	CP/2150 KENNEDY	40457.65	98180.15	4623.07
69	CSM	41100.83	96023.92	4634.23
72	CSM	41117.32	96023.83	4634.36
184	CSM	41100.45	96354.70	4633.88
418	CSM	41099.97	96684.94	4635.99
767	CSM	41762.35	96685.10	4640.14
974	CSM	39965.78	96994.72	4626.08
976	CSM	39970.26	96994.54	4626.07
1069	CSM	41763.41	96354.42	4638.87
1158	CSM	41435.61	96354.58	4636.62
1562	CSM	41764.48	96024.02	4639.11
1626	CSM	39965.65	97347.98	4623.66
1808	CSM	40454.24	97347.33	4627.11
2380	CSM	39805.17	96685.85	4626.00
2381	CSM	39819.85	96685.82	4626.12
2496	CSM	40118.66	96685.71	4628.53
2800	CSM	39964.32	98000.77	4621.35
2973	CSM	40453.33	98000.37	4624.17
3115	CSM	40452.80	98323.46	4622.33

N:\2022\10\10\2022\Phase 1 - Bunting\100115 - 01-CSP-00.dwg, 5/29/2022, 8:54 AM, JCF

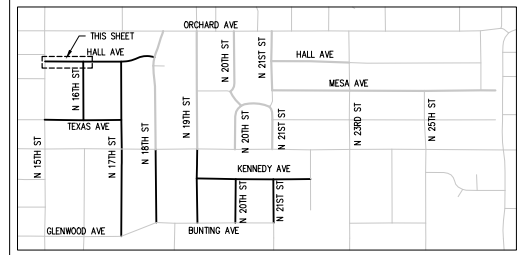
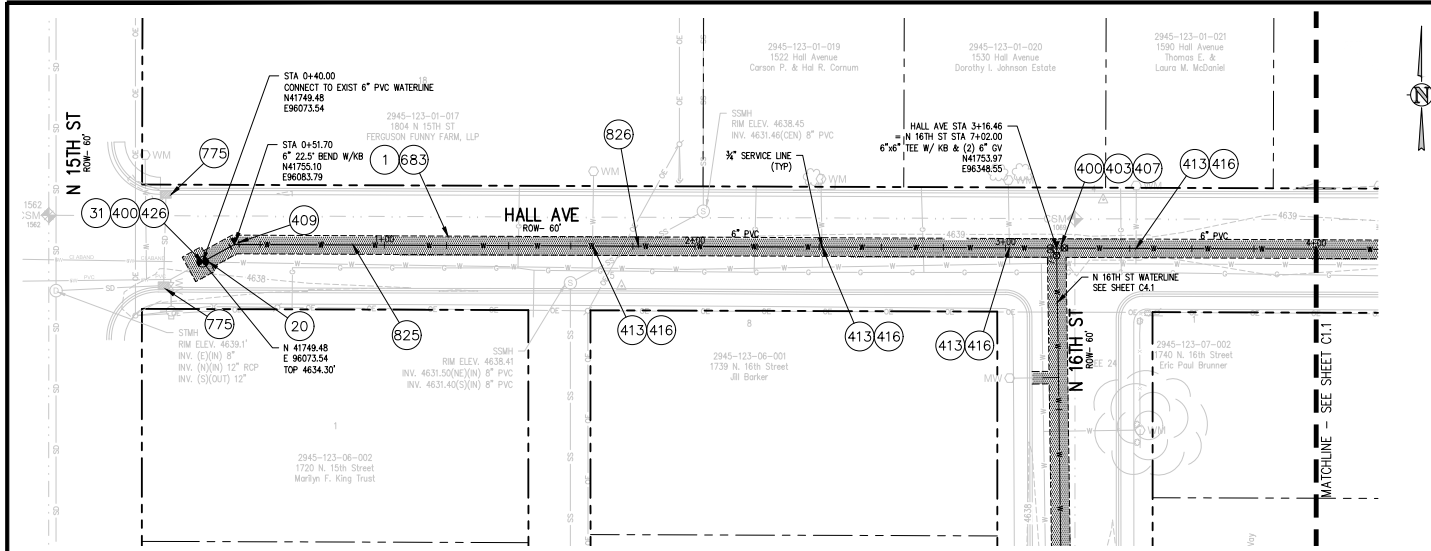
REVISION	DESCRIPTION	DATE	DRAWN BY	DATE
1			ZCF	07.18.2022
2			LAL/ZCF	07.18.2022
3			JJM	07.18.2022
4				

SCALES:



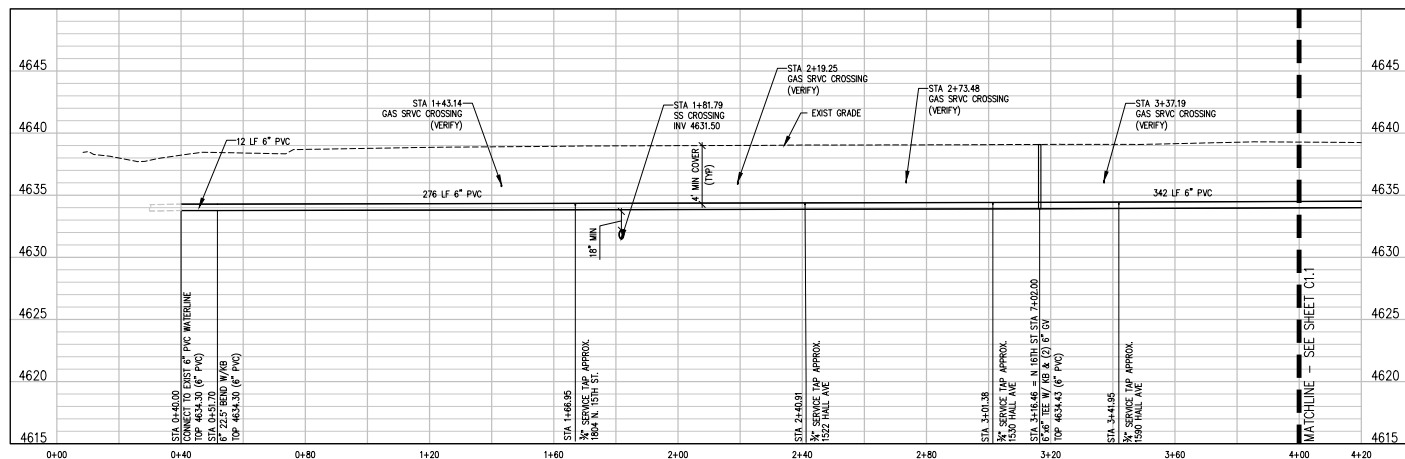
**2022 WATERLINE REPLACEMENT  
PROJECT - PHASE 1  
OVERALL UTILITY PLAN**

CO.0



**CONSTRUCTION NOTES**

- 1 202 - REMOVAL OF ASPHALT MAT. SAW CUT AND REMOVE ASPHALT AS SHOWN. (INDICATED BY DOT HATCH PATTERN).
- 20 202 - ABANDON PIPE. ABANDONED BY PLUGGING REMAINING ENDS WITH CONCRETE.
- 31 REMOVE EXISTING ELBOW. SALVAGE AND DELIVER TO CITY SHOPS.
- 400 102.7/108.2 - WATER MAIN PIPE (C-900 DR-18 PVC) (SIZE AS SHOWN). INCLUDES TYPE A BEDDING AND HAUNCHING MATERIAL AND BACKFILL OF TRENCH WITH NATIVE MATERIALS MEETING 103.16 EARTH BACKFILL MATERIAL.
- 403 102.8b/108.3 - GATE VALVE. (SIZE AS SHOWN)
- 407 102.8/108.3 - TEE (SIZE AS SHOWN)
- 409 102.8/108.3 - ELBOW (SIZE AND ANGLE AS SHOWN)
- 413 102.7C/108.4 - WATER SERVICE LINE (TYPE K COPPER) (SIZE AS SHOWN ON PLAN) THE CONTRACT UNIT PRICE FOR WATER SERVICE PIPE SHALL INCLUDE THE COST OF CONNECTION TO WATERLINE INCLUDING ALL MATERIALS TO MAKE THE CONNECTION AND CLOSING ORIGINAL CORPORATION STOP.
- 416 102.8/108.4 CORPORATION STOP (SIZE AS SHOWN ON PLAN)
- 426 CONNECT TO EXISTING WATER PIPE/VALVE/FITTING. THE CONTRACT UNIT PRICE FOR WATER PIPE SHALL INCLUDE THE COST OF CONNECTION TO EXISTING PIPELINE.
- 683 401.08 - HOT BITUMINOUS PAVEMENT (PATCHING) (4" THICK ON TOP OF 6" ABC) (GRADING SX, BINDER GRADE PG 64-22, GYR 75) (TWO 2" LIFTS)
- 775 208 - STORM DRAIN INLET PROTECTION (EROSION CONTROL LOG) (AS SHOWN AND PER DETAIL)
- 825 CONTRACTOR IS RESPONSIBLE FOR REPAIR COSTS ASSOCIATED WITH ANY/ALL DAMAGE TO PRIVATE PROPERTY BEHIND ROW LINE OR EASEMENT LIMITS.
- 826 PROTECT EXISTING UTILITY LINE IN PLACE.



- NOTES:**
1. CONNECT TO EXISTING SERVICE LINES OR EXTEND SERVICE LINES TO NEW 6" WATERLINE
  2. ALL CURB STOP AND SERVICE LINE LOCATIONS ARE APPROXIMATE AND SHALL BE VERIFIED IN THE FIELD PRIOR TO CONSTRUCTION
  3. IF CURB STOP WAS NOT LOCATED FIELD LOCATE CURB STOP AND REPLACE EXIST SRVC CONNECTION WITH NEW CONNECTION TO NEW 6" WATERLINE

N:\2022\10\10\2022\Phase 1 - Building\2022-08-09-02.dwg, 8/29/2022, 8:35 AM, jcf

REVISION	DESCRIPTION	DATE	DRAWN BY	DATE
1			ZCF	07.18.2022
2			LAL/ZCF	07.18.2022
3			JJM	07.18.2022
4				

**SCALES:**

PLAN & PROFILE	1" = 40'
VERTICAL	1" = 4'



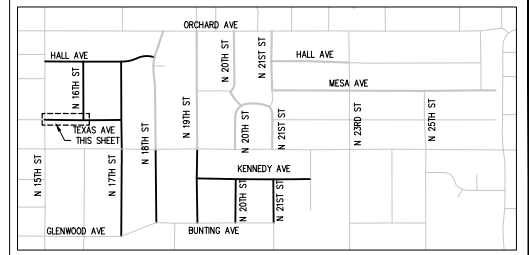
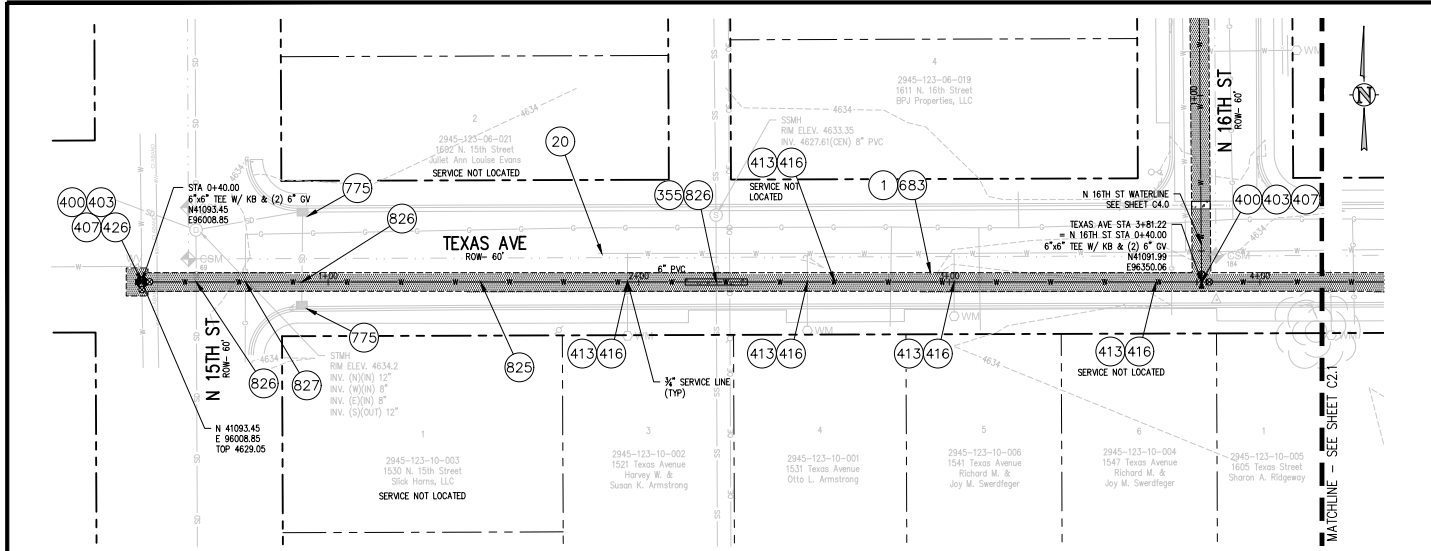
**2022 WATERLINE REPLACEMENT PROJECT - PHASE 1**  
**HALL AVE WATER PLAN & PROFILE**

C1.0



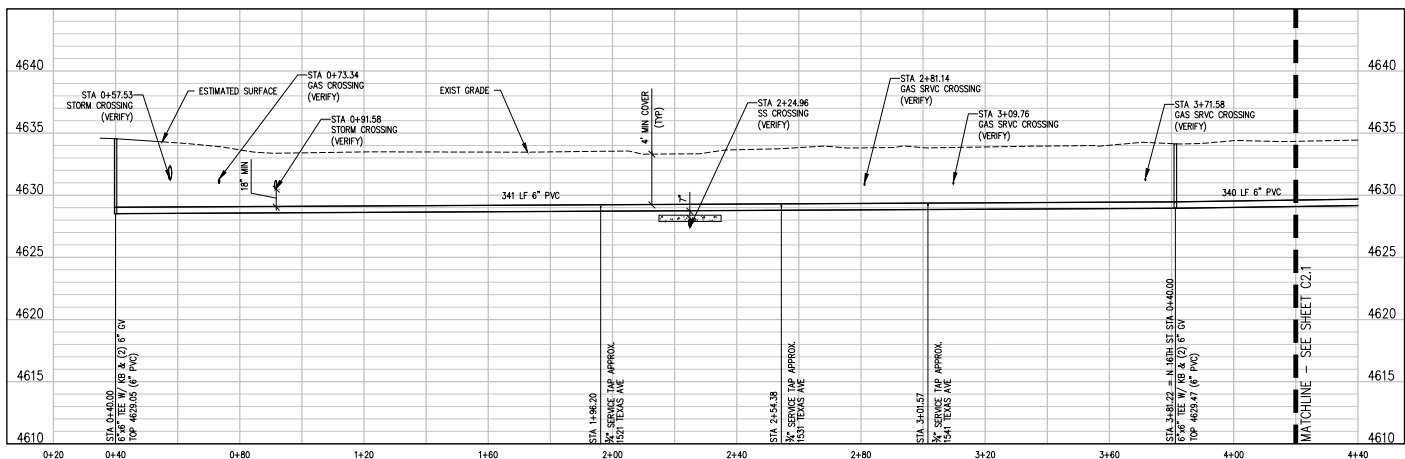






**CONSTRUCTION NOTES**

- 1 202 - REMOVAL OF ASPHALT MAT, SAW CUT AND REMOVE ASPHALT AS SHOWN. (INDICATED BY DOT HATCH PATTERN).
- 20 202 - ABANDON PIPE. ABANDONED BY PLUGGING REMAINING ENDS WITH CONCRETE.
- 355 104.40 - CAP TOP HALF OF SEWER IN CONCRETE PER STD. DETAIL GU-04. (WATER LINE LESS THAN 18" ABOVE SEWER LINE)
- 400 102.7/108.2 - WATER MAIN PIPE (C-900 DR-18 PVC) (SIZE AS SHOWN). INCLUDES TYPE A BEDDING AND HAUNCHING MATERIAL AND BACKFILL OF TRENCH WITH NATIVE MATERIALS MEETING 103.16 EARTH BACKFILL MATERIAL.
- 403 102.8b/108.3 - GATE VALVE. (SIZE AS SHOWN)
- 407 102.8/108.3 - TEE (SIZE AS SHOWN)
- 413 102.7c/108.4 - WATER SERVICE LINE (TYPE K COPPER) (SIZE AS SHOWN ON PLAN) THE CONTRACT UNIT PRICE FOR WATER SERVICE PIPE SHALL INCLUDE THE COST OF CONNECTION TO WATERLINE INCLUDING ALL MATERIALS TO MAKE THE CONNECTION AND CLOSING ORIGINAL CORPORATION STOP.
- 416 102.8/108.4 CORPORATION STOP (SIZE AS SHOWN ON PLAN)
- 426 CONNECT TO EXISTING WATER PIPE/VALVE/FITTING. THE CONTRACT UNIT PRICE FOR WATER PIPE SHALL INCLUDE THE COST OF CONNECTION TO EXISTING PIPELINE.
- 683 401.08 - HOT BITUMINOUS PAVEMENT (PATCHING) (4" THICK ON TOP OF 6" ABC) (GRADING SX, BINDER GRADE PG 64-22, GYR 75) (TWO 2" LIFTS)
- 775 208 - STORM DRAIN INLET PROTECTION (EROSION CONTROL LOG) (AS SHOWN AND PER DETAIL).
- 825 CONTRACTOR IS RESPONSIBLE FOR REPAIR COSTS ASSOCIATED WITH ANY/ALL DAMAGE TO PRIVATE PROPERTY BEHIND ROW LINE OR EASEMENT LIMITS.
- 826 PROTECT EXISTING UTILITY LINE IN PLACE.
- 827 PROTECT EXISTING GAS.



**NOTES:**

- CONNECT TO EXISTING SERVICE LINES OR EXTEND SERVICE LINES TO NEW 6" WATERLINE
- ALL CURB STOP AND SERVICE LINE LOCATIONS ARE APPROXIMATE AND SHALL BE VERIFIED IN THE FIELD PRIOR TO CONSTRUCTION
- IF CURB STOP WAS NOT LOCATED FIELD LOCATE CURB STOP AND REPLACE EXIST SRVC CONNECTION WITH NEW CONNECTION TO NEW 6" WATERLINE

N:\2022\10\10\2022\Phase 1 - 2022\10\10\2022 - 02.dwg, 07/20/2022, 9:05 AM, JCF

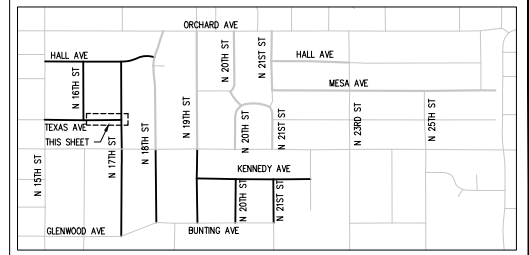
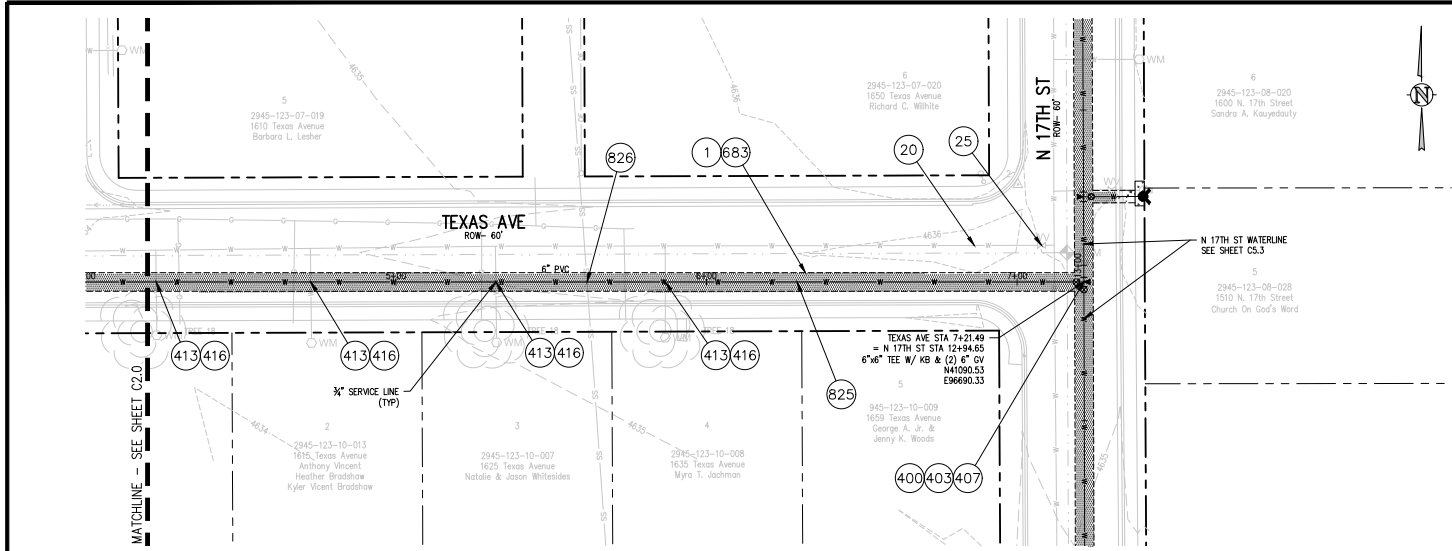
REVISION	DESCRIPTION	DATE	DRAWN BY	DATE
REVISION A			JCF	07.18.2022
REVISION B			LAL/ZCF	07.18.2022
REVISION C			JIM	07.18.2022
REVISION D				

SCALES:

PLAN & PROFILE	1" = 40'
VERTICAL	1" = 4'

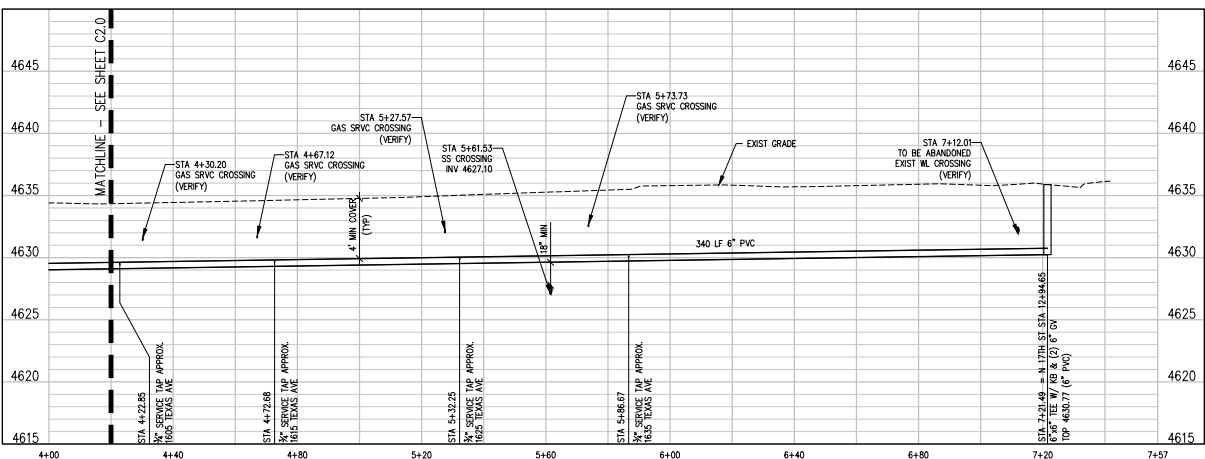


**2022 WATERLINE REPLACEMENT PROJECT - PHASE 1**  
**TEXAS AVE WATER PLAN & PROFILE**



**CONSTRUCTION NOTES**

- 1 - 202 - REMOVAL OF ASPHALT MAT. SAW CUT AND REMOVE ASPHALT AS SHOWN, (INDICATED BY DOT HATCH PATTERN).
- 20 - 202 - ABANDON PIPE. ABANDONED BY PLUGGING REMAINING ENDS WITH CONCRETE.
- 25 - 202 - ABANDON EXISTING WATER VALVE. CLOSE VALVE, REMOVE TOP HALF OF EXISTING VALVE BOX, FILL CAVITY TO FINISHED SUBGRADE WITH FLOW FILL MATERIAL.
- 400 - 102.7/108.2 - WATER MAIN PIPE (C-900 DR-18 PVC) (SIZE AS SHOWN), INCLUDES TYPE A BEDDING AND HAUNCHING MATERIAL AND BACKFILL OF TRENCH WITH NATIVE MATERIALS MEETING 103.16 EARTH BACKFILL MATERIAL.
- 403 - 102.8b/108.3 - GATE VALVE, (SIZE AS SHOWN)
- 407 - 102.8/108.3 - TEE (SIZE AS SHOWN)
- 413 - 102.7C/108.4 - WATER SERVICE LINE (TYPE K COPPER) (SIZE AS SHOWN ON PLAN) THE CONTRACT UNIT PRICE FOR WATER SERVICE PIPE SHALL INCLUDE THE COST OF CONNECTION TO WATERLINE INCLUDING ALL MATERIALS TO MAKE THE CONNECTION AND CLOSING ORIGINAL CORPORATION STOP.
- 416 - 102.8/108.4 CORPORATION STOP (SIZE AS SHOWN ON PLAN)
- 683 - 401.08 - HOT BITUMINOUS PAVEMENT (PATCHING) (4" THICK ON TOP OF 6" ABC) (GRADING SX, BINDER GRADE PG 64-22, GYR 75) (TWO 2' LIFTS)
- 825 - CONTRACTOR IS RESPONSIBLE FOR REPAIR COSTS ASSOCIATED WITH ANY/ALL DAMAGE TO PRIVATE PROPERTY BEHIND ROW LINE OR EASEMENT LIMITS.
- 826 - PROTECT EXISTING UTILITY LINE IN PLACE.



- NOTES:**
- CONNECT TO EXISTING SERVICE LINES OR EXTEND SERVICE LINES TO NEW 6" WATERLINE
  - ALL CURB STOP AND SERVICE LINE LOCATIONS ARE APPROXIMATE AND SHALL BE VERIFIED IN THE FIELD PRIOR TO CONSTRUCTION
  - IF CURB STOP WAS NOT LOCATED FIELD LOCATE CURB STOP AND REPLACE EXIST SRVC CONNECTION WITH NEW CONNECTION TO NEW 6" WATERLINE

N:\2022\10\10\2022\Phase 1 - 2022\10\10\2022 - 02.dwg, 07/20/2022, 8:04 AM, JCF

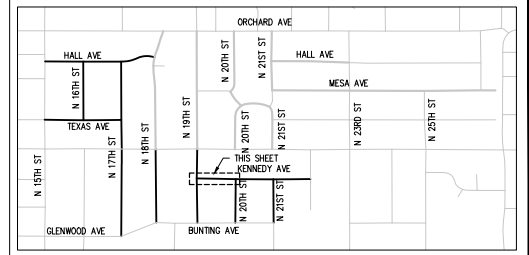
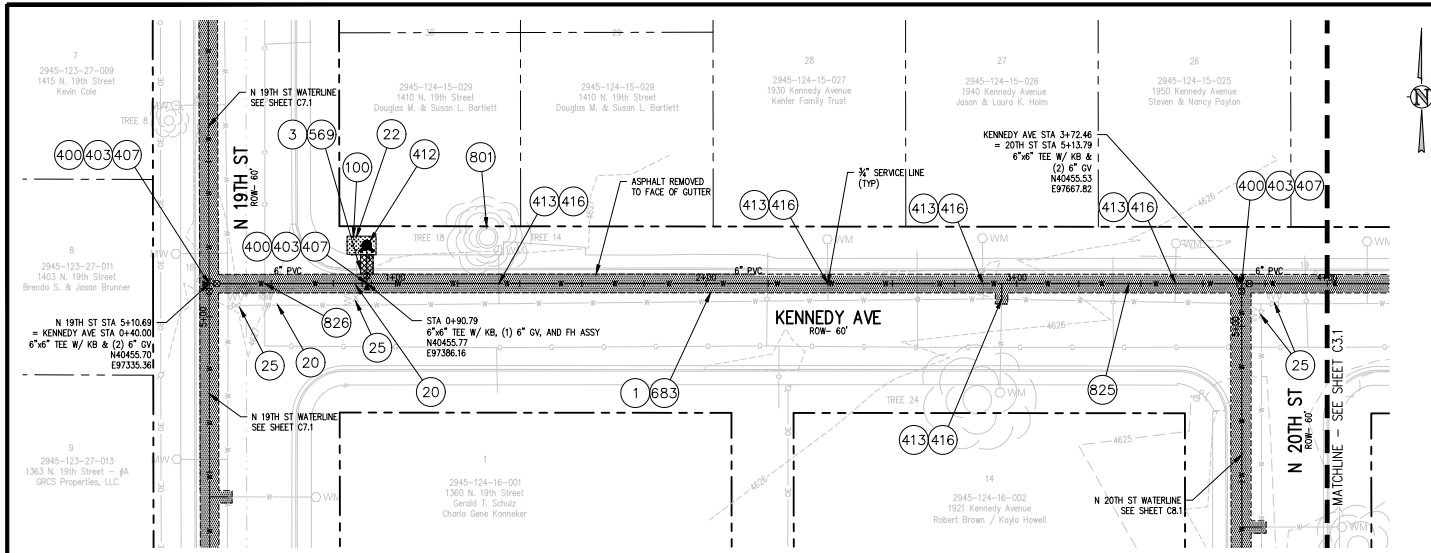
REVISION	DESCRIPTION	DATE	DRAWN BY	DATE
1			JCF	07.18.2022
2			LAL/JCF	07.18.2022
3			JIM	07.18.2022
4				

**SCALES:**

PLAN	1" = 40'
PROFILE	1" = 4'



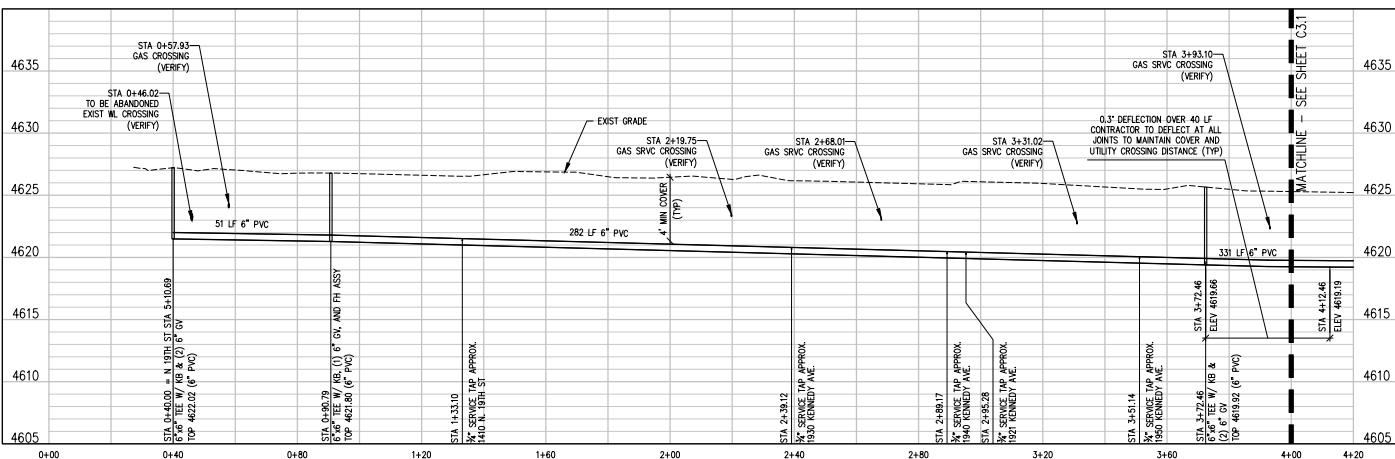
**2022 WATERLINE REPLACEMENT PROJECT - PHASE 1**  
**TEXAS AVE WATER PLAN & PROFILE**
C2.1



KEY MAP  
NTS

**CONSTRUCTION NOTES**

- 1 202 - REMOVAL OF ASPHALT MAT. SAW CUT AND REMOVE ASPHALT AS SHOWN. (INDICATED BY DOT HATCH PATTERN).
- 3 202 - REMOVAL OF CONCRETE. SAW CUT AND REMOVE CONCRETE AS SHOWN. (INDICATED BY CROSS HATCH PATTERN) INCLUDES BUT NOT LIMITED TO CURB, GUTTER, SIDEWALK, DRIVEWAY, SLABS, V-PAN, CURB RAMPS, INTERSECTION CORNERS, APRONS, AND LANDSCAPE BORDERS.
- 20 202 - ABANDON PIPE. ABANDONED BY PLUGGING REMAINING ENDS WITH CONCRETE.
- 22 202 - REMOVE EXISTING FIRE HYDRANT AND RETURN TO CITY SHOPS.
- 25 202 - ABANDON EXISTING WATER VALVE. CLOSE VALVE, REMOVE TOP HALF OF EXISTING VALVE BOX, FILL CAVITY TO FINISHED SUBGRADE WITH FLOW FILL MATERIAL.
- 100 210 - RESET LANDSCAPE GROUND COVER. CONTRACTOR SHALL REMOVE GROUND COVER AND ANY UNDERLYING WEED BARRIER AS NEEDED AND STOCKPILE MATERIALS. CONTRACTOR SHALL RESET THESE MATERIALS AND PROVIDE ADDITIONAL MATERIALS AS NEEDED TO RESTORE LANDSCAPING.
- 400 102.7/108.2 - WATER MAIN PIPE (C-900 DR-18 PVC) (SIZE AS SHOWN). INCLUDES TYPE A BEDDING AND HAUNCHING MATERIAL AND BACKFILL OF TRENCH WITH NATIVE MATERIALS MEETING 103.16 EARTH BACKFILL MATERIAL.
- 403 102.8/108.3 - GATE VALVE. (SIZE AS SHOWN)
- 407 102.8/108.3 - TEE (SIZE AS SHOWN)
- 412 102.8/108.3 - FIRE HYDRANT
- 413 102.7/108.4 - WATER SERVICE LINE (TYPE K COPPER) (SIZE AS SHOWN ON PLAN) THE CONTRACT UNIT PRICE FOR WATER SERVICE PIPE SHALL INCLUDE THE COST OF CONNECTION TO WATERLINE INCLUDING ALL MATERIALS TO MAKE THE CONNECTION AND CLOSING ORIGINAL CORPORATION STOP.
- 416 102.8/108.4 CORPORATION STOP (SIZE AS SHOWN ON PLAN)
- 569 608.06 - MONOLITHIC CURB, GUTTER AND SIDEWALK (5' WIDE)
- 683 401.08 - HOT BITUMINOUS PAVEMENT (PATCHING) (4" THICK ON TOP OF 6" ABC) (GRADING SX, BINDER GRADE PG 64-22, GYR 75) (TWO 2" LIFTS)
- 801 PROTECT TREE
- 825 CONTRACTOR IS RESPONSIBLE FOR REPAIR COSTS ASSOCIATED WITH ANY/ALL DAMAGE TO PRIVATE PROPERTY BEHIND ROW LINE OR EASEMENT LIMITS.
- 827 PROTECT EXISTING GAS.



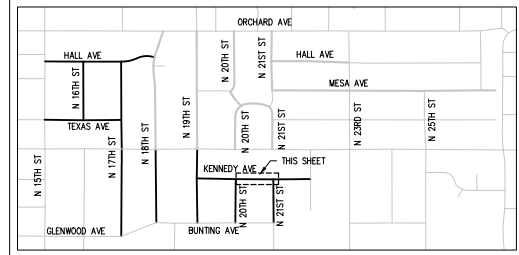
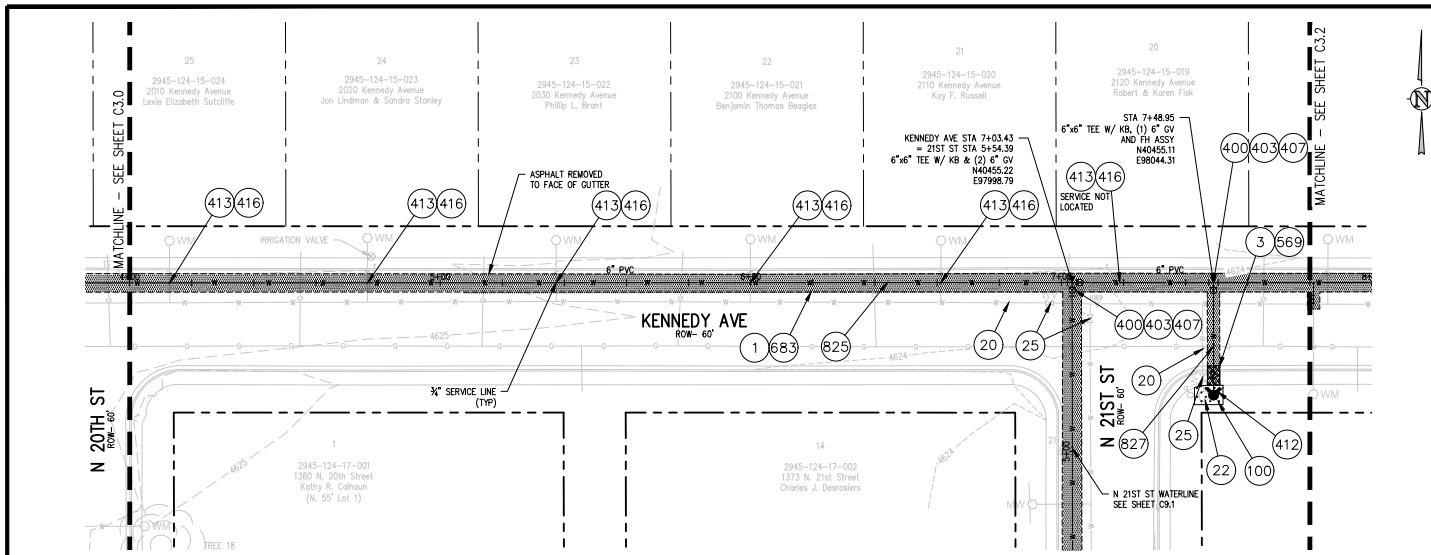
N:\2022\10\10\2022\Phase 1 - Kennedy\102115 - 02.dwg (2/20/2022 - 8:36 AM) .rvt

REVISION	DESCRIPTION	DATE	DRAWN BY	DATE
1			ZCF	07.18.2022
2			LAL/ZCF	07.18.2022
3			JIM	07.18.2022
4				

SCALE:
PLAN & PROFILE
1" = 40'
1" = 20'
1" = 10'



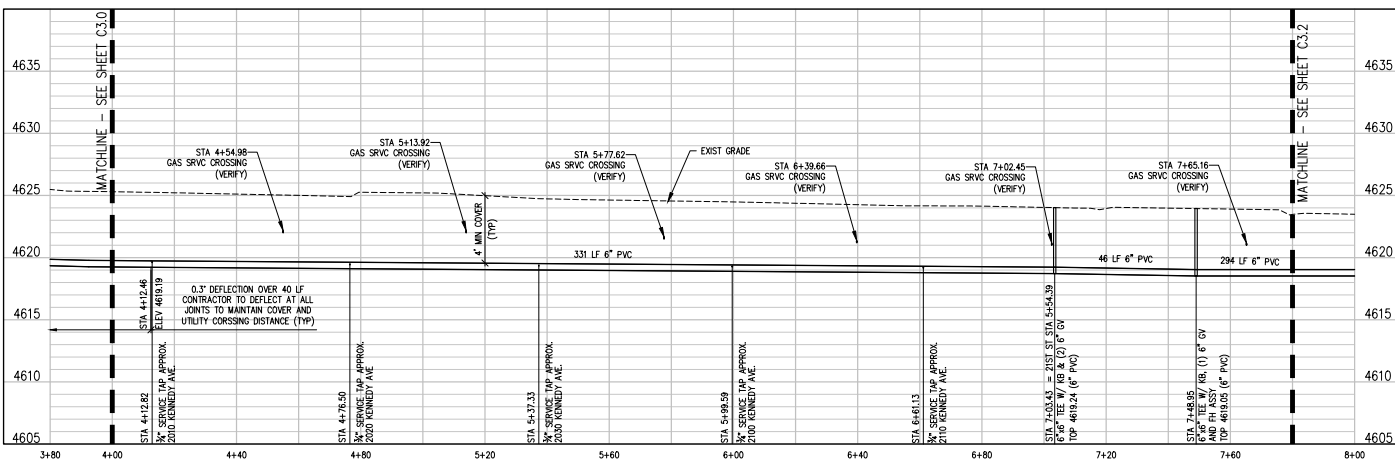
**2022 WATERLINE REPLACEMENT PROJECT - PHASE 1**  
**KENNEDY AVE WATER PLAN & PROFILE**



KEY MAP  
NTS

**CONSTRUCTION NOTES**

- 1 202 - REMOVAL OF ASPHALT MAT. SAW CUT AND REMOVE ASPHALT AS SHOWN, (INDICATED BY DOT HATCH PATTERN).
- 3 202 - REMOVAL OF CONCRETE. SAW CUT AND REMOVE CONCRETE AS SHOWN, (INDICATED BY CROSS HATCH PATTERN) INCLUDES BUT NOT LIMITED TO CURB, GUTTER, SIDEWALK, DRIVEWAY, SLABS, V-PAN, CURB RAMPS, INTERSECTION CORNERS, APRONS, AND LANDSCAPE BORDERS.
- 20 202 - ABANDON PIPE. ABANDON BY PLUGGING REMAINING ENDS WITH CONCRETE.
- 22 202 - REMOVE EXISTING FIRE HYDRANT AND RETURN TO CITY SHOPS.
- 25 202 - ABANDON EXISTING WATER VALVE. CLOSE VALVE, REMOVE TOP HALF OF EXISTING VALVE BOX, FILL CAVITY TO FINISHED SUBGRADE WITH FLOW FILL MATERIAL.
- 100 210 - RESET LANDSCAPE GROUND COVER. CONTRACTOR SHALL REMOVE GROUND COVER AND ANY UNDERLYING WEED BARRIER AS NEEDED AND STOCKPILE MATERIALS. CONTRACTOR SHALL RESET THESE MATERIALS AND PROVIDE ADDITIONAL MATERIALS AS NEEDED TO RESTORE LANDSCAPING.
- 400 102.7/108.2 - WATER MAIN PIPE (C-900 DR-18 PVC) (SIZE AS SHOWN), INCLUDES TYPE A BEDDING AND HAUNCHING MATERIAL AND BACKFILL OF TRENCH WITH NATIVE MATERIALS MEETING 103.16 EARTH BACKFILL MATERIAL.
- 403 102.8b/108.3 - GATE VALVE. (SIZE AS SHOWN)
- 407 102.8/108.3 - TEE (SIZE AS SHOWN)
- 412 102.8a/108.3 - FIRE HYDRANT
- 413 102.7/108.4 - WATER SERVICE LINE (TYPE K COPPER) (SIZE AS SHOWN ON PLAN) THE CONTRACT UNIT PRICE FOR WATER SERVICE PIPE SHALL INCLUDE THE COST OF CONNECTION TO WATERLINE INCLUDING ALL MATERIALS TO MAKE THE CONNECTION AND CLOSING ORIGINAL CORPORATION STOP.
- 416 102.8/108.4 CORPORATION STOP (SIZE AS SHOWN ON PLAN)
- 569 608.06 - MONOLITHIC CURB, GUTTER AND SIDEWALK (5' WIDE)
- 683 401.08 - HOT BITUMINOUS PAVEMENT (PATCHING) (4" THICK ON TOP OF 6" ABC) (GRADING SX, BINDER GRADE PG 64-22, GYR 75) (TWO 2" LIFTS)
- 825 CONTRACTOR IS RESPONSIBLE FOR REPAIR COSTS ASSOCIATED WITH ANY/ALL DAMAGE TO PRIVATE PROPERTY BEHIND ROW LINE OR EASEMENT LIMITS.
- 827 PROTECT EXISTING GAS.



- NOTES:**
1. CONNECT TO EXISTING SERVICE LINES OR EXTEND SERVICE LINES TO NEW 6" WATERLINE
  2. ALL CURB STOP AND SERVICE LINE LOCATIONS ARE APPROXIMATE AND SHALL BE VERIFIED IN THE FIELD PRIOR TO CONSTRUCTION
  3. IF CURB STOP WAS NOT LOCATED FIELD LOCATE CURB STOP AND REPLACE EXIST SRVC CONNECTION WITH NEW CONNECTION TO NEW 6" WATERLINE

N:\2022\10\10\2022\Phase 1 - Kennedy\102115 - 02.dwg (2/20/2022) - 8:36 AM, JCF

REVISION	DESCRIPTION	DATE	DRAWN BY	DATE
1			JCF	07.18.2022
2			LAL/ZCF	07.18.2022
3			JIM	07.18.2022

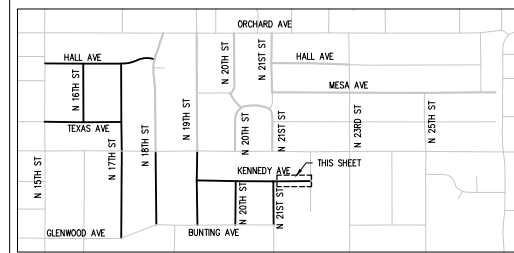
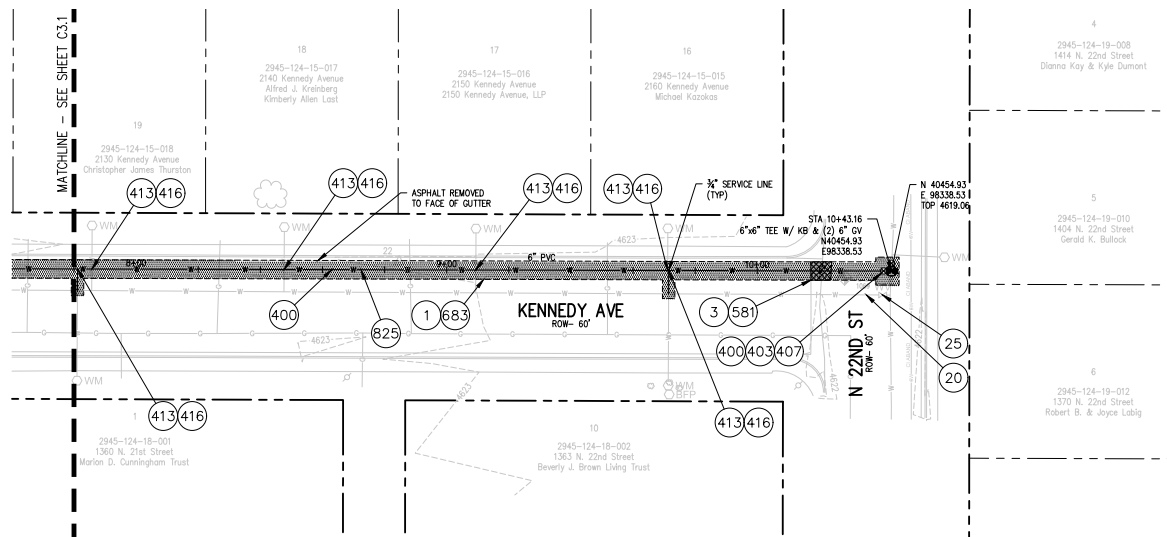
SCALES:

PLAN & PROFILE	1" = 40'
SECTION	1" = 4'
DETAIL	1" = 1'



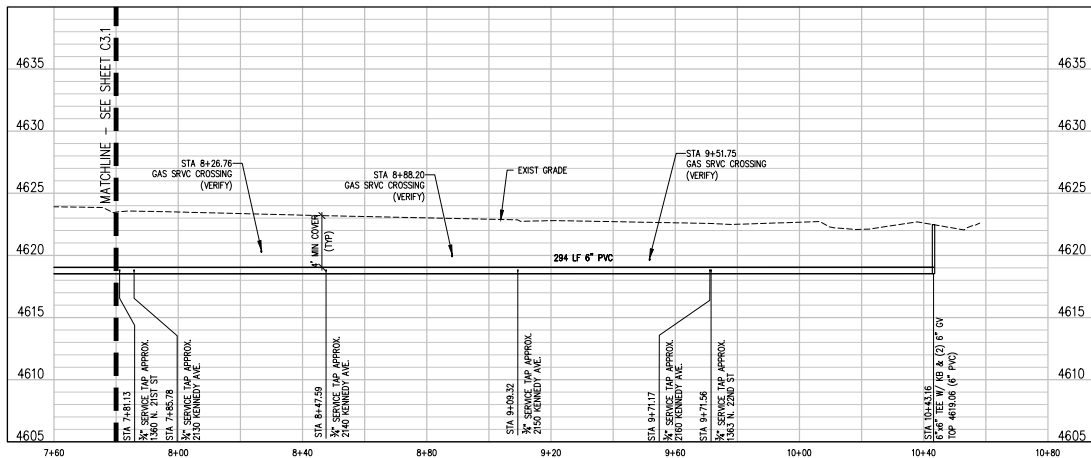
**2022 WATERLINE REPLACEMENT PROJECT - PHASE 1**  
**KENNEDY AVE WATER PLAN & PROFILE**

C3.1



**CONSTRUCTION NOTES**

- 1 202 - REMOVAL OF ASPHALT MAT. SAW CUT AND REMOVE ASPHALT AS SHOWN. (INDICATED BY DOT HATCH PATTERN).
- 3 202 - REMOVAL OF CONCRETE. SAW CUT AND REMOVE CONCRETE AS SHOWN. (INDICATED BY CROSS HATCH PATTERN) INCLUDES BUT NOT LIMITED TO CURB, GUTTER, SIDEWALK, DRIVEWAY, SLABS, V-PAN, CURB RAMPS, INTERSECTION CORNERS, APRONS, AND LANDSCAPE BORDERS.
- 20 202 - ABANDON PIPE. ABANDONED BY PLUGGING REMAINING ENDS WITH CONCRETE.
- 25 202 - ABANDON EXISTING WATER VALVE. CLOSE VALVE, REMOVE TOP HALF OF EXISTING VALVE BOX. FILL CAVITY TO FINISHED SUBGRADE WITH FLOW FILL MATERIAL.
- 400 102.7/108.2 - WATER MAIN PIPE (C-900 DR-18 PVC) (SIZE AS SHOWN). INCLUDES TYPE A BEDDING AND HAUNCHING MATERIAL AND BACKFILL OF TRENCH WITH NATIVE MATERIALS MEETING 103.16 EARTH BACKFILL MATERIAL.
- 403 102.8b/108.3 - GATE VALVE. (SIZE AS SHOWN)
- 407 102.8/108.3 - TEE (SIZE AS SHOWN)
- 413 102.7C/108.4 - WATER SERVICE LINE (TYPE K COPPER) (SIZE AS SHOWN ON PLAN) THE CONTRACT UNIT PRICE FOR WATER SERVICE PIPE SHALL INCLUDE THE COST OF CONNECTION TO WATERLINE INCLUDING ALL MATERIALS TO MAKE THE CONNECTION AND CLOSING ORIGINAL CONNECTION STOP.
- 416 102.8j/108.4 CORPORATION STOP (SIZE AS SHOWN ON PLAN)
- 581 608.06 - CONCRETE DRAINAGE PAN (6" WIDE)
- 683 401.05 - HOT BITUMINOUS PAVEMENT (PATCHING) (4" THICK ON TOP OF 6" ABC) (GRADING SX, BINDER GRADE PG 64-22, GYR 75) (TWO 2' LIFTS)
- 825 CONTRACTOR IS RESPONSIBLE FOR REPAIR COSTS ASSOCIATED WITH ANY/ALL DAMAGE TO PRIVATE PROPERTY BEHIND ROW LINE OR EASEMENT LIMITS.



- NOTES:**
- 1. CONNECT TO EXISTING SERVICE LINES OR EXTEND SERVICE LINES TO NEW 6" WATERLINE
  - 2. ALL CURB STOP AND SERVICE LINE LOCATIONS ARE APPROXIMATE AND SHALL BE VERIFIED IN THE FIELD PRIOR TO CONSTRUCTION
  - 3. IF CURB STOP WAS NOT LOCATED FIELD LOCATE CURB STOP AND REPLACE EXIST SRVC CONNECTION WITH NEW CONNECTION TO NEW 6" WATERLINE

N:\VOTD\10\mch\Phase 1 - Kennedy\1001101 - CD - 08-02.dwg, 8/29/2022, 8:56 AM, zcf

REVISION	DESCRIPTION	DATE	DRAWN BY	DATE
1			ZCF	07.18.2022
2			LAL/ZCF	07.18.2022
3			JJM	07.18.2022
4				

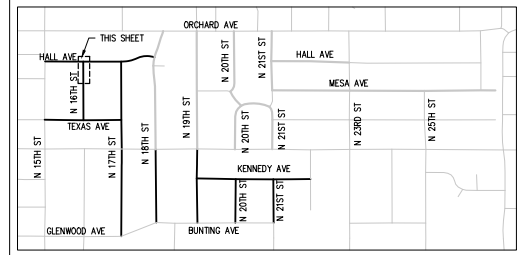
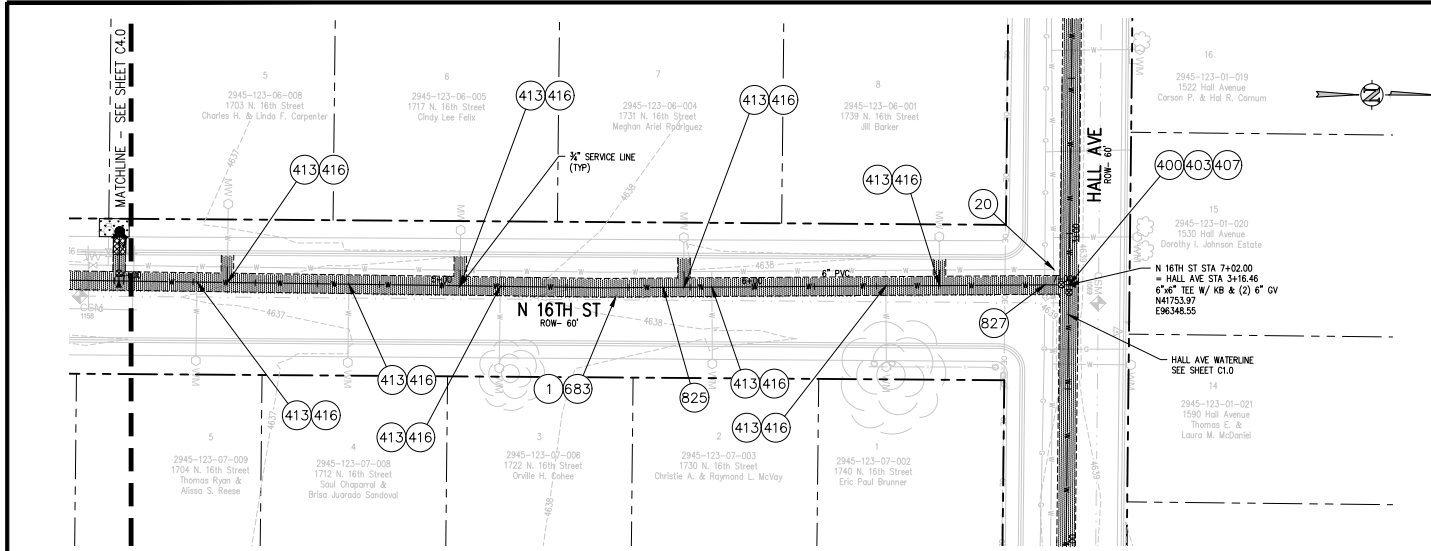
**SCALES:**

PLAN & PROFILE	1" = 40'
	1" = 20'
	1" = 10'



**2022 WATERLINE REPLACEMENT PROJECT - PHASE 1**  
**KENNEDY AVE WATER PLAN & PROFILE**

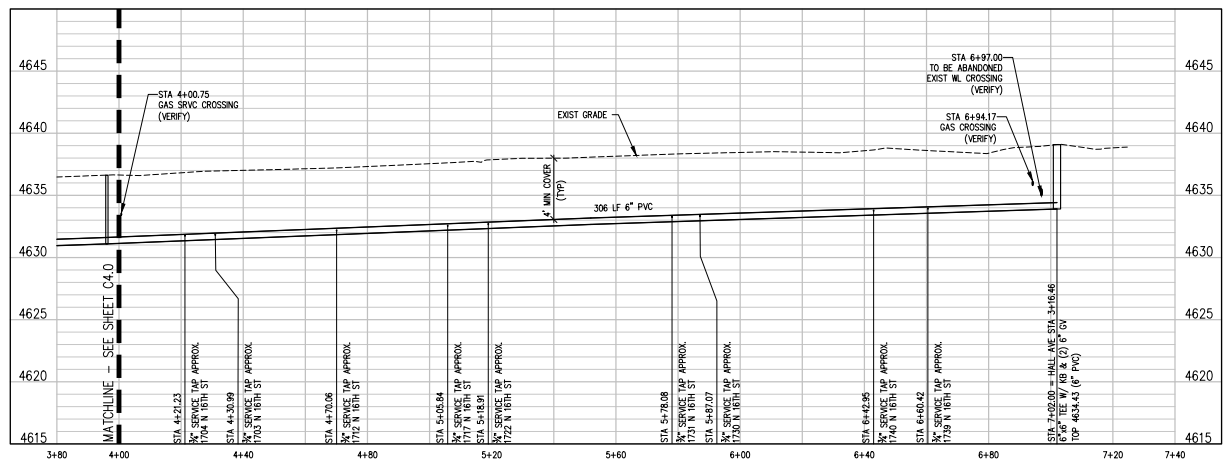




KEY MAP  
NTS

**CONSTRUCTION NOTES**

- 1 202 - REMOVAL OF ASPHALT MAT. SAW CUT AND REMOVE ASPHALT AS SHOWN. (INDICATED BY DOT HATCH PATTERN).
- 20 202 - ABANDON PIPE. ABANDONED BY PLUGGING REMAINING ENDS WITH CONCRETE.
- 400 102.7/108.2 - WATER MAIN PIPE (C-900 PVC DR-18) (SIZE AS SHOWN). INCLUDES TYPE A BEDDING AND HAUNCHING MATERIAL AND BACKFILL OF TRENCH WITH NATIVE MATERIALS MEETING 103.16 EARTH BACKFILL MATERIAL.
- 403 102.8/108.3 - GATE VALVE. (SIZE AS SHOWN)
- 407 102.8/108.3 - TEE (SIZE AS SHOWN)
- 413 102.7/108.4 - WATER SERVICE LINE (TYPE K COPPER) (SIZE AS SHOWN ON PLAN) THE CONTRACT UNIT PRICE FOR WATER SERVICE PIPE SHALL INCLUDE THE COST OF CONNECTION TO WATERLINE INCLUDING ALL MATERIALS TO MAKE THE CONNECTION AND CLOSING ORIGINAL CORPORATION STOP.
- 416 102.8/108.4 - CORPORATION STOP (SIZE AS SHOWN ON PLAN)
- 683 401.08 - HOT BITUMINOUS PAVEMENT (PATCHING) (4" THICK ON TOP OF 6" ABC) (GRADING SX, BINDER GRADE PG 64-22, GYR 75) (TWO 2' LIFTS)
- 825 CONTRACTOR IS RESPONSIBLE FOR REPAIR COSTS ASSOCIATED WITH ANY/ALL DAMAGES TO PRIVATE PROPERTY BEHIND ROW LINE OR EASEMENT LIMITS.
- 827 PROTECT EXISTING GAS.



- NOTES:**
1. CONNECT TO EXISTING SERVICE LINES OR EXTEND SERVICE LINES TO NEW 6" WATERLINE
  2. ALL CURB STOP AND SERVICE LINE LOCATIONS ARE APPROXIMATE AND SHALL BE VERIFIED IN THE FIELD PRIOR TO CONSTRUCTION
  3. IF CURB STOP WAS NOT LOCATED FIELD LOCATE CURB STOP AND REPLACE EXIST SRVC CONNECTION WITH NEW CONNECTION TO NEW 6" WATERLINE

N:\0710\0710\0710\Phase 1 - 2022\0710-01-02-000-01.dwg, 8/20/2022, 8:37 AM, zcf

REVISION	DESCRIPTION	DATE	DRAWN BY	DATE
1			ZCF	07.18.2022
2			LAL/ZCF	07.18.2022
3			JIM	07.18.2022
4				

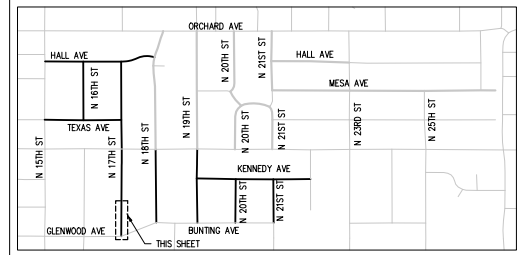
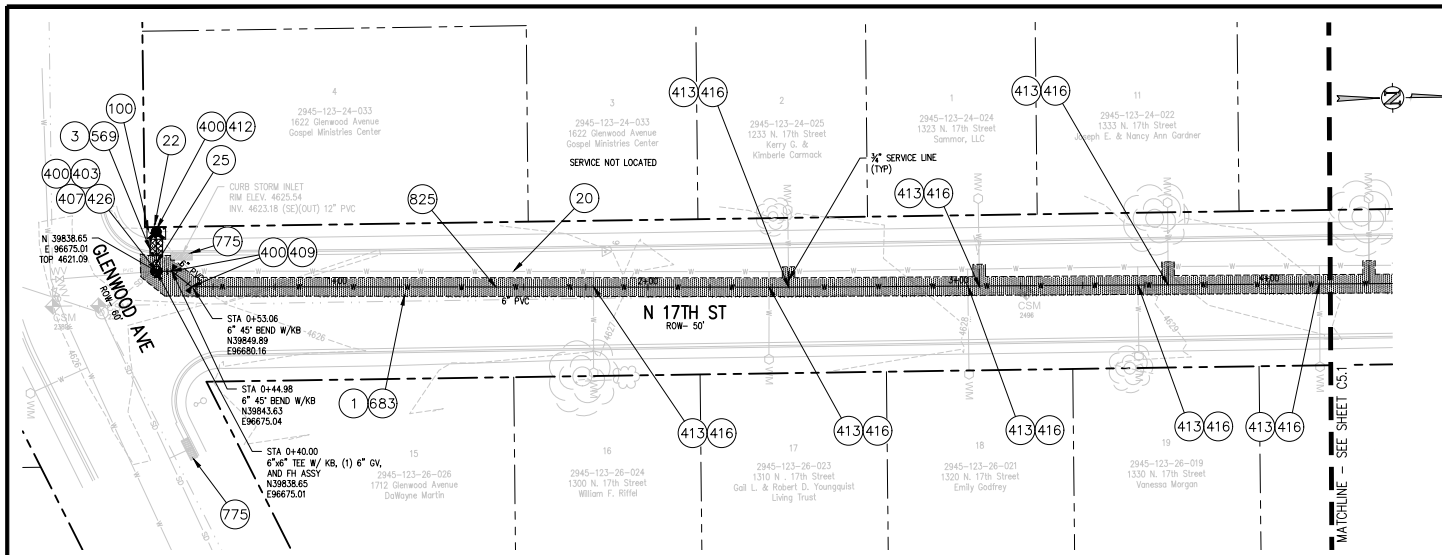
SCALES:

PLAN & PROFILE	1" = 40'
SECTION	1" = 10'
DETAIL	1" = 2'



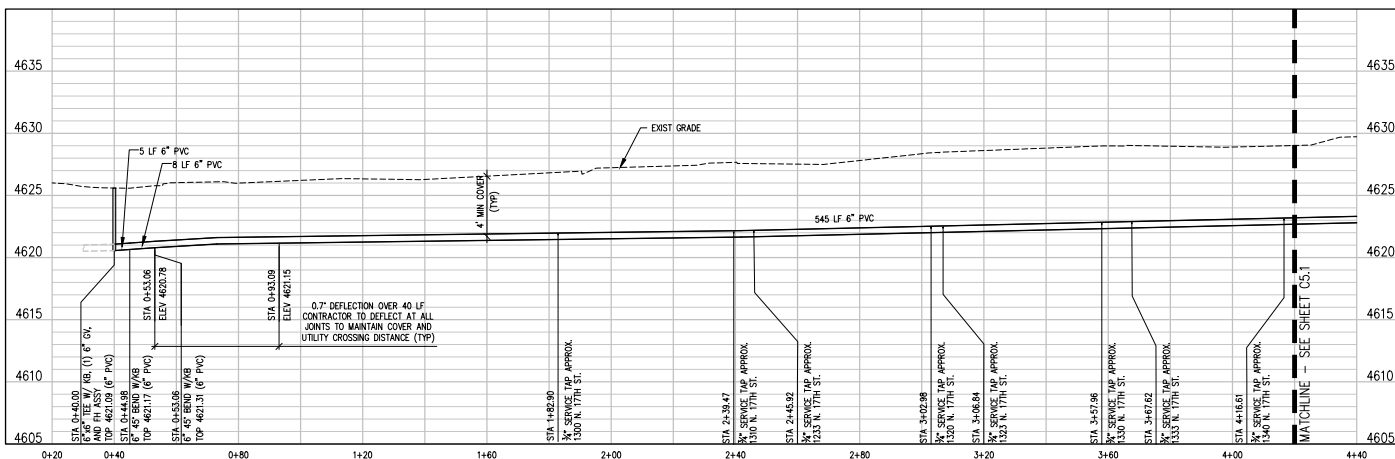
**2022 WATERLINE REPLACEMENT PROJECT - PHASE 1**  
**N 16TH ST WATER PLAN & PROFILE**





**CONSTRUCTION NOTES**

- 1 202 - REMOVAL OF ASPHALT MAT. SAW CUT AND REMOVE ASPHALT AS SHOWN. (INDICATED BY DOT HATCH PATTERN).
- 3 202 - REMOVAL OF CONCRETE. SAW CUT AND REMOVE CONCRETE AS SHOWN. (INDICATED BY CROSS HATCH PATTERN) INCLUDES BUT NOT LIMITED TO CURB, GUTTER, SIDEWALK, DRIVEWAY, SLABS, V-PAN, CURB RAMPS, INTERSECTION CORNERS, APRONS, AND LANDSCAPE BORDERS.
- 20 202 - ABANDON PIPE. ABANDONED BY PLUGGING REMAINING ENDS WITH CONCRETE.
- 22 202 - REMOVE EXISTING FIRE HYDRANT AND RETURN TO CITY SHOPS.
- 25 202 - ABANDON EXISTING WATER VALVE. CLOSE VALVE. REMOVE TOP HALF OF EXISTING VALVE BOX. FILL CAVITY TO FINISHED SUBGRADE WITH FLOW FILL MATERIAL.
- 100 210 - RESET LANDSCAPE GROUND COVER. CONTRACTOR SHALL REMOVE GROUND COVER AND ANY UNDERLYING WEED BARRIER AS NEEDED AND STOCKPILE MATERIALS. CONTRACTOR SHALL RESET THESE MATERIALS AND PROVIDE ADDITIONAL MATERIALS AS NEEDED TO RESTORE LANDSCAPING.
- 400 102.7/108.2 - WATER MAIN PIPE (C-900 DR-18 PVC) (SIZE AS SHOWN). INCLUDES TYPE A BEDDING AND HAUNCHING MATERIAL AND BACKFILL OF TRENCH WITH NATIVE MATERIALS MEETING 103.16 EARTH BACKFILL MATERIAL.
- 403 102.8B/108.3 - GATE VALVE. (SIZE AS SHOWN)
- 407 102.8/108.3 - TEE (SIZE AS SHOWN)
- 409 102.8/108.3 - ELBOW (SIZE AND ANGLE AS SHOWN)
- 412 102.8A/108.3 - FIRE HYDRANT
- 413 102.7C/108.4 - WATER SERVICE LINE (TYPE K COPPER) (SIZE AS SHOWN ON PLAN) THE CONTRACT UNIT PRICE FOR WATER SERVICE PIPE SHALL INCLUDE THE COST OF CONNECTION TO WATERLINE INCLUDING ALL MATERIALS TO MAKE THE CONNECTION AND CLOSING ORIGINAL CORPORATION STOP.
- 416 102.8J/108.4 - CORPORATION STOP (INSTALL ONLY) (SIZE AS SHOWN ON PLAN)
- 426 CONNECT TO EXISTING WATER PIPE/VALVE/FITTING. THE CONTRACT UNIT PRICE FOR WATER PIPE SHALL INCLUDE THE COST OF CONNECTION TO EXISTING PIPELINE
- 569 608.06 - MONOLITHIC CURB, GUTTER AND SIDEWALK (5' WIDE)
- 683 401.08 - HOT BITUMINOUS PAVEMENT (PATCHING) (4" THICK ON TOP OF 6" ABC) (GRADING SIX, BINDER GRADE PG 64-22, GYR 75) (TWO 2" LIFTS)
- 775 208 - STORM DRAIN INLET PROTECTION (EROSION CONTROL LOG) (AS SHOWN AND PER DETAIL)
- 825 CONTRACTOR IS RESPONSIBLE FOR REPAIR COSTS ASSOCIATED WITH ANY/ALL DAMAGE TO PRIVATE PROPERTY BEHIND ROW LINE OR EASEMENT LIMITS.



N:\VTD\10\10\10\Phase 1 - 2022\102.7C-108.4.dwg, 8/20/2022, 8:57 AM, zcf

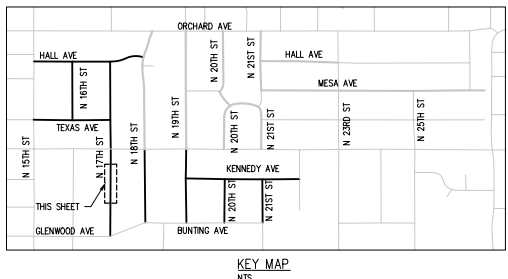
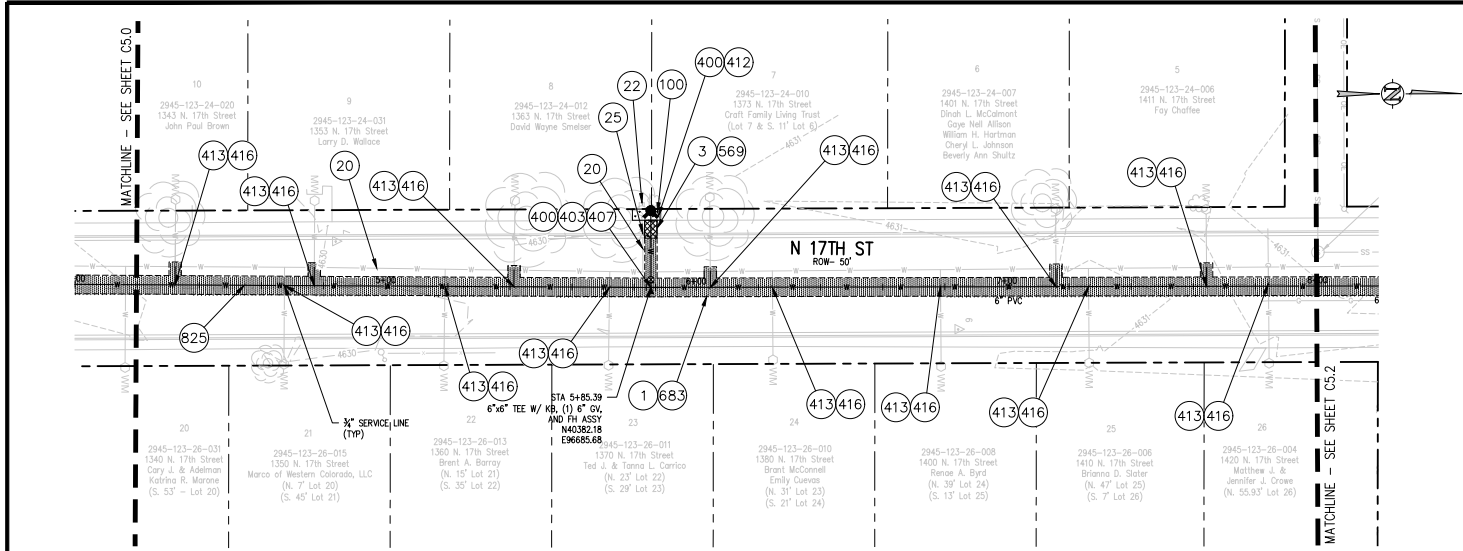
REVISION	DESCRIPTION	DATE	DRAWN BY	DATE
REVISION A			ZCF	07.18.2022
REVISION B			LAL/ZCF	07.18.2022
REVISION C			JIM	07.18.2022
REVISION D				

SCALES:

PLAN & PROFILE	1" = 40'
VERTICAL	1" = 4'

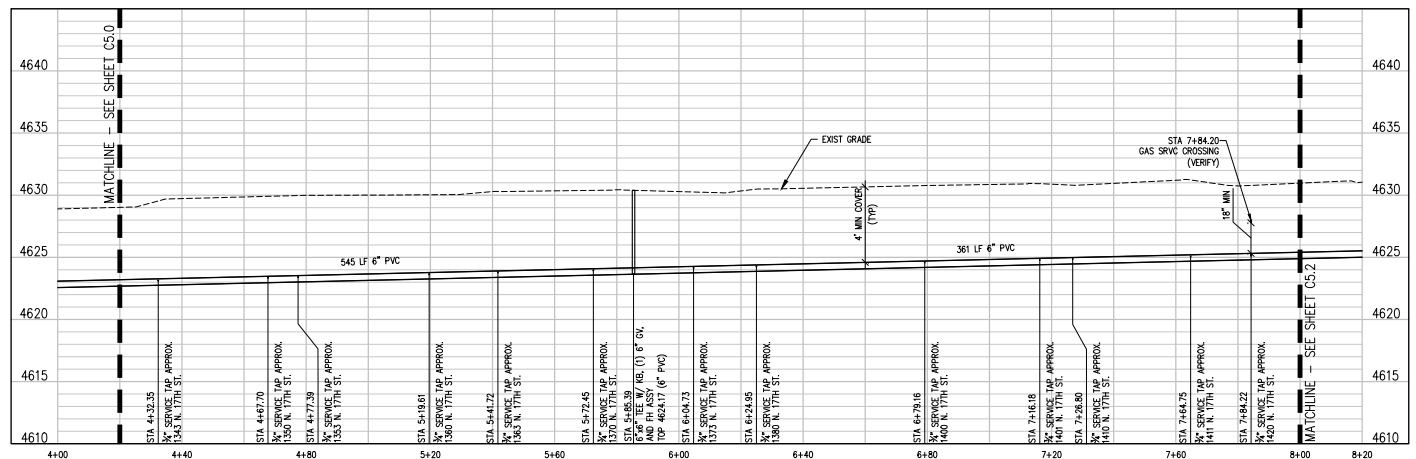


**2022 WATERLINE REPLACEMENT PROJECT - PHASE 1**  
**N 17TH ST WATER PLAN & PROFILE**
C5.0



**CONSTRUCTION NOTES**

- ① 202 - REMOVAL OF ASPHALT MAT. SAW CUT AND REMOVE ASPHALT AS SHOWN. (INDICATED BY DOT HATCH PATTERN).
- ③ 202 - REMOVAL OF CONCRETE. SAW CUT AND REMOVE CONCRETE AS SHOWN. (INDICATED BY CROSS HATCH PATTERN) INCLUDES BUT NOT LIMITED TO CURB, GUTTER, SIDEWALK, DRIVEWAY, SLABS, V-PAN, CURB RAMPS, INTERSECTION CORNERS, APRONS, AND LANDSCAPE BORDERS.
- ②0 202 - ABANDON PIPE. ABANDONED BY PLUGGING REMAINING ENDS WITH CONCRETE.
- ②2 202 - REMOVE EXISTING FIRE HYDRANT AND RETURN TO CITY SHOPS.
- ②5 202 - ABANDON EXISTING WATER VALVE. CLOSE VALVE. REMOVE TOP HALF OF EXISTING VALVE BOX. FILL CAVITY TO FINISHED SUBGRADE WITH FLOW FILL MATERIAL.
- ①00 210 - RESET LANDSCAPE GROUND COVER. CONTRACTOR SHALL REMOVE GROUND COVER AND ANY UNDERLYING WEED BARRIER AS NEEDED AND STOCKPILE MATERIALS. CONTRACTOR SHALL RESET THESE MATERIALS AND PROVIDE ADDITIONAL MATERIALS AS NEEDED TO RESTORE LANDSCAPING.
- ④00 102.7/108.2 - WATER MAIN PIPE (C-900 DR-18 PVC) (SIZE AS SHOWN). INCLUDES TYPE A BEDDING AND HAUNCHING MATERIAL AND BACKFILL OF TRENCH WITH NATIVE MATERIALS MEETING 103.16 EARTH BACKFILL MATERIAL.
- ④03 102.8b/108.3 - GATE VALVE. (SIZE AS SHOWN)
- ④07 102.8/108.3 - TEE (SIZE AS SHOWN)
- ④12 102.8A/108.3 - FIRE HYDRANT
- ④13 102.7C/108.4 - WATER SERVICE LINE (TYPE K COPPER) (SIZE AS SHOWN ON PLAN) THE CONTRACT UNIT PRICE FOR WATER SERVICE PIPE SHALL INCLUDE THE COST OF CONNECTION TO WATERLINE INCLUDING ALL MATERIALS TO MAKE THE CONNECTION AND CLOSING ORIGINAL CORPORATION STOP.
- ④16 102.8J/108.4 - CORPORATION STOP (INSTALL ONLY) (SIZE AS SHOWN ON PLAN)
- ⑤69 608.06 - MONOLITHIC CURB, GUTTER AND SIDEWALK (5' WIDE)
- ⑤83 401.08 - HOT BITUMINOUS PAVEMENT (PATCHING) (4" THICK ON TOP OF 6" ABC) (GRADING SX, BINDER GRADE PG 64-22, GYR 75) (TWO 2" LIFTS)
- ⑧25 CONTRACTOR IS RESPONSIBLE FOR REPAIR COSTS ASSOCIATED WITH ANY ALL DAMAGE TO PRIVATE PROPERTY BEHIND ROW LINE OR EASEMENT LIMITS.



N:\071010\071010.dwg - 2022-04-08 09:20:22 - 8:37 AM. rjt

REVISION	DESCRIPTION	DATE	DRAWN BY	DATE
REVISION A			ZCF	07.18.2022
REVISION B			LAL/ZCF	07.18.2022
REVISION C			JJM	07.18.2022
REVISION D				

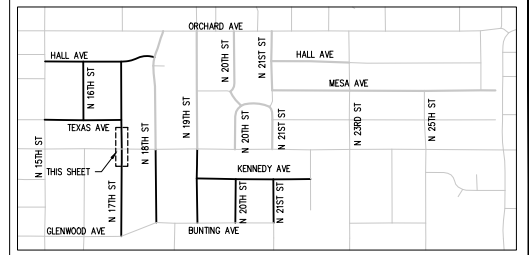
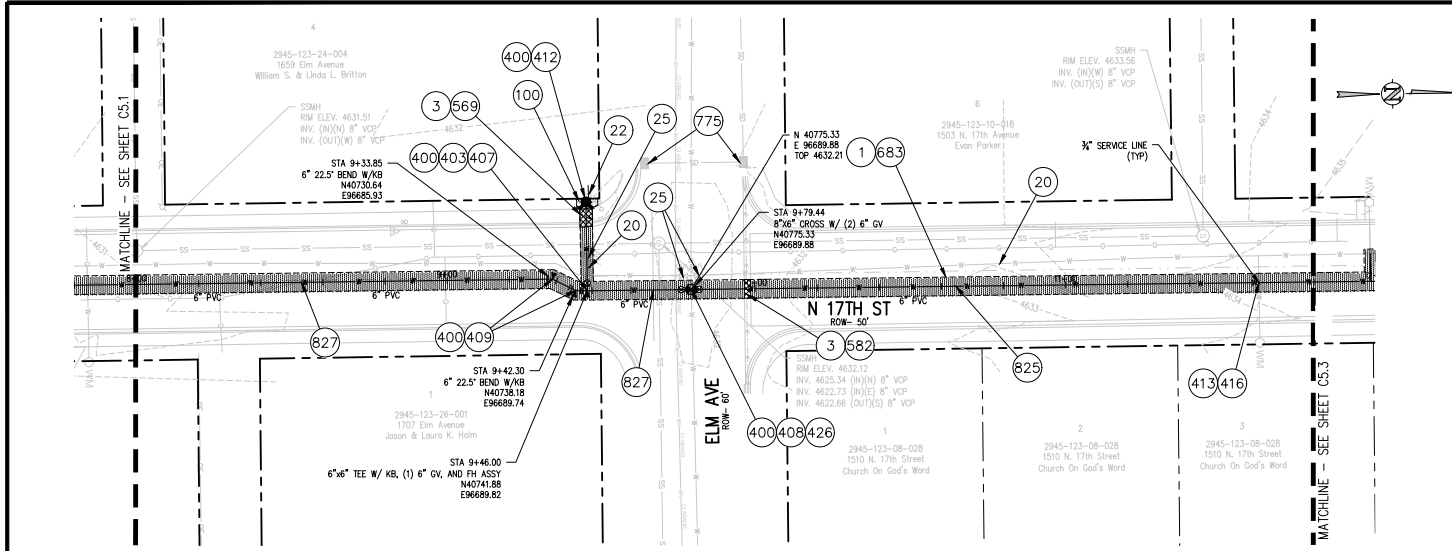
SCALES:

PLAN & PROFILE	1" = 40'
VERTICAL	1" = 4'
HYDRAULIC	1" = 10'



**2022 WATERLINE REPLACEMENT PROJECT - PHASE 1**  
**N 17TH ST WATER PLAN & PROFILE**

C5.1

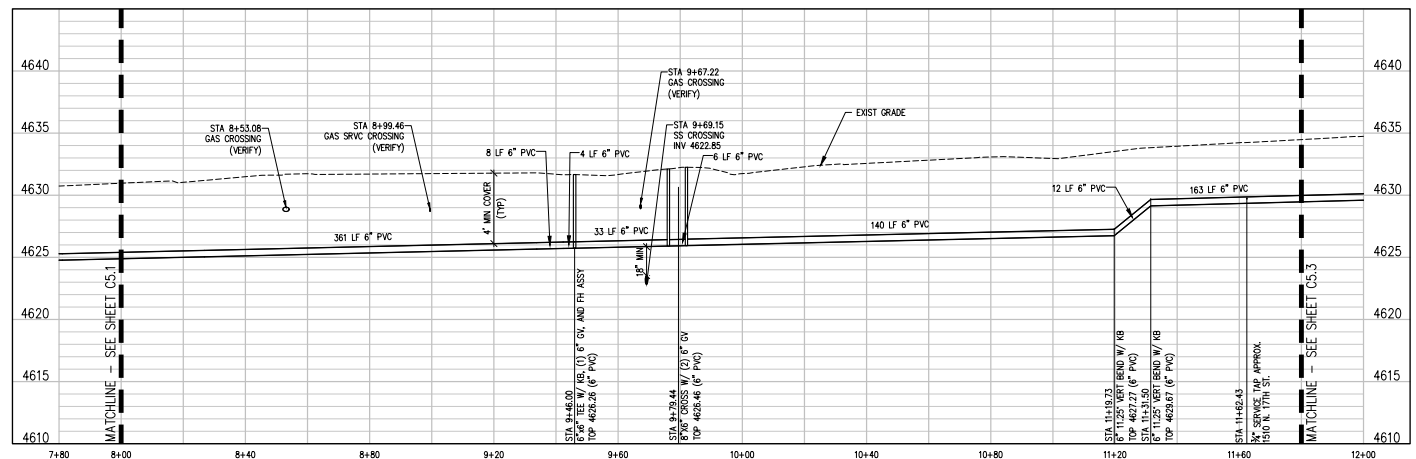


**CONSTRUCTION NOTES**

- 1 202 - REMOVAL OF ASPHALT MAT. SAW CUT AND REMOVE ASPHALT AS SHOWN. (INDICATED BY DOT HATCH PATTERN).
- 3 202 - REMOVAL OF CONCRETE. SAW CUT AND REMOVE CONCRETE AS SHOWN. (INDICATED BY CROSS HATCH PATTERN) INCLUDES BUT NOT LIMITED TO CURB, GUTTER, SIDEWALK, DRIVEWAY, SLABS, V-PAN, CURB RAMPS, INTERSECTION CORNERS, APRONS, AND LANDSCAPE BORDERS.
- 20 202 - ABANDON PIPE. ABANDONED BY PLUGGING REMAINING ENDS WITH CONCRETE.
- 22 202 - REMOVE EXISTING FIRE HYDRANT AND RETURN TO CITY SHOPS.
- 25 202 - ABANDON EXISTING WATER VALVE. CLOSE VALVE, REMOVE TOP HALF OF EXISTING VALVE BOX, FILL CAVITY TO FINISHED SUBGRADE WITH FLOW FILL MATERIAL.
- 100 210 - RESET LANDSCAPE GROUND COVER. CONTRACTOR SHALL REMOVE GROUND COVER AND ANY UNDERLYING WEED BARRIER AS NEEDED AND STOCKPILE MATERIALS. CONTRACTOR SHALL RESET THESE MATERIALS AND PROVIDE ADDITIONAL MATERIALS AS NEEDED TO RESTORE LANDSCAPING.
- 400 102.7/108.2 - WATER MAIN PIPE (C-900 DR-18 PVC) (SIZE AS SHOWN), INCLUDES TYPE A BEDDING AND HAUNCHING MATERIAL AND BACKFILL OF TRENCH WITH NATIVE MATERIALS MEETING 103-16 EARTH BACKFILL MATERIAL.
- 403 102.8b/108.3 - GATE VALVE. (SIZE AS SHOWN)
- 407 102.8/108.3 - TEE (SIZE AS SHOWN)
- 408 102.8/108.3 - CROSS (SIZE AS SHOWN)
- 409 102.8/108.3 - ELBOW (SIZE AND ANGLE AS SHOWN)
- 412 102.8A/108.3 - FIRE HYDRANT
- 413 102.7C/108.4 - WATER SERVICE LINE (TYPE K COPPER) (SIZE AS SHOWN ON PLAN) THE CONTRACT UNIT PRICE FOR WATER SERVICE PIPE SHALL INCLUDE THE COST OF CONNECTION TO WATERLINE INCLUDING ALL MATERIALS TO MAKE THE CONNECTION AND CLOSING ORIGINAL CORPORATION STOP.
- 416 102.8J/108.4 - CORPORATION STOP (INSTALL ONLY) (SIZE AS SHOWN ON PLAN)
- 426 CONNECT TO EXISTING WATER PIPE/VALVE/FITTING. THE CONTRACT UNIT PRICE FOR WATER PIPE SHALL INCLUDE THE COST OF CONNECTION TO EXISTING PIPELINE
- 569 608.06 - MONOLITHIC CURB, GUTTER AND SIDEWALK (5' WIDE)
- 582 608.06 - CONCRETE DRAINAGE PAN (3' WIDE)
- 683 401.08 - HOT BITUMINOUS PAVEMENT (PATCHING) (4" THICK ON TOP OF 6" ABC) (GRADING SX, BINDER GRADE PG 64-22, GYR 75) (TWO 2' LIFTS)
- 775 208 - STORM DRAIN INLET PROTECTION (EROSION CONTROL LOG) (AS SHOWN AND PER DETAIL)
- 825 CONTRACTOR IS RESPONSIBLE FOR REPAIR COSTS ASSOCIATED WITH ANY/ALL DAMAGE TO PRIVATE PROPERTY BEHIND ROW LINE OR EASEMENT LIMITS.
- 827 PROTECT EXISTING GAS.

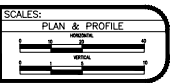
**NOTES:**

- CONNECT TO EXISTING SERVICE LINES OR EXTEND SERVICE LINES TO NEW 6" WATERLINE
- ALL CURB STOP AND SERVICE LINE LOCATIONS ARE APPROXIMATE AND SHALL BE VERIFIED IN THE FIELD PRIOR TO CONSTRUCTION
- IF CURB STOP WAS NOT LOCATED FIELD LOCATE CURB STOP AND REPLACE EXIST SRVC CONNECTION WITH NEW CONNECTION TO NEW 6" WATERLINE



N:\2022\10\10\2022\Phase 1 - 2022\10\10\2022 - 827.dwg, 8/20/2022, 8:37 AM, zcf

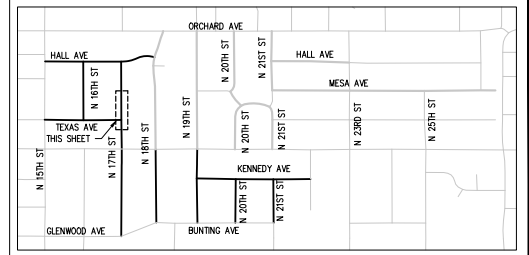
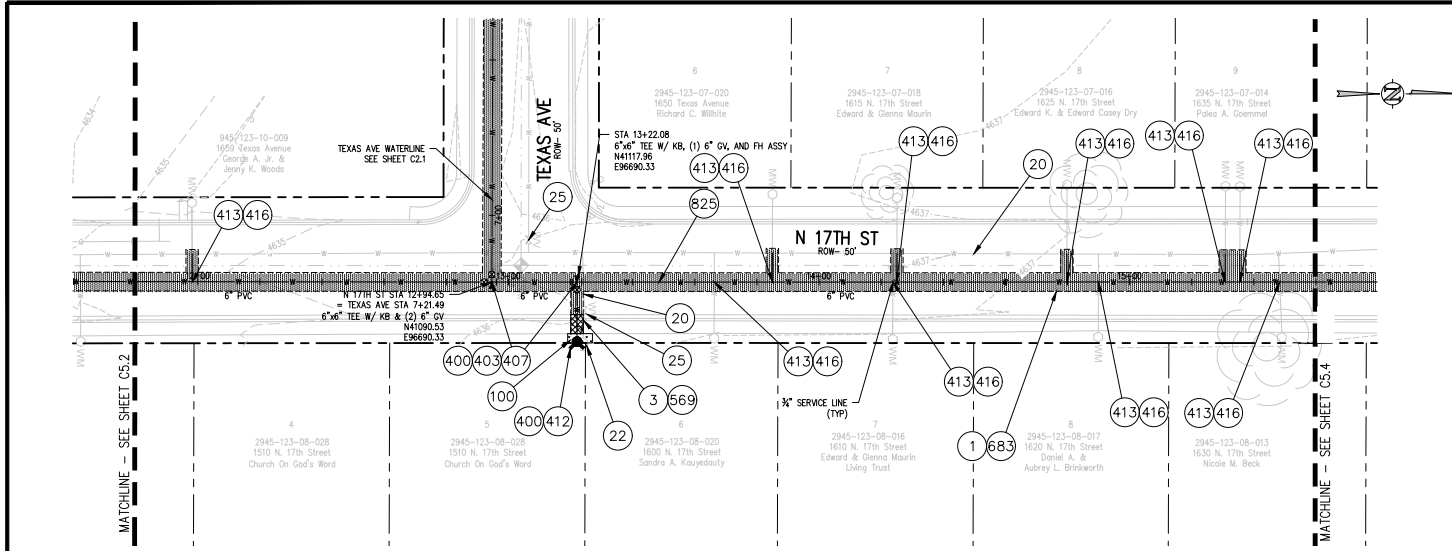
REVISION	DESCRIPTION	DATE	DRAWN BY	DATE
1			ZCF	07.18.2022
2			LAL/ZCF	07.18.2022
3			JJM	07.18.2022
4				



**2022 WATERLINE REPLACEMENT PROJECT - PHASE 1**

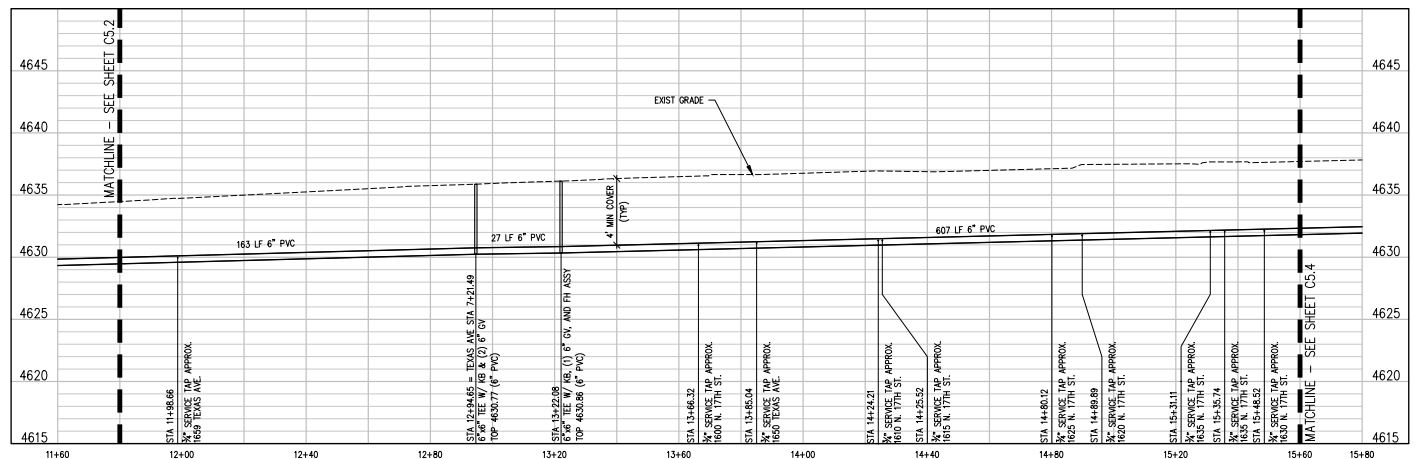
**N 17TH ST WATER PLAN & PROFILE**

**C5.2**



**CONSTRUCTION NOTES**

- ① 202 - REMOVAL OF ASPHALT MAT. SAW CUT AND REMOVE ASPHALT AS SHOWN. (INDICATED BY DOT HATCH PATTERN).
- ③ 202 - REMOVAL OF CONCRETE. SAW CUT AND REMOVE CONCRETE AS SHOWN. (INDICATED BY CROSS HATCH PATTERN) INCLUDES BUT NOT LIMITED TO CURB, GUTTER, SIDEWALK, DRIVEWAY, SLABS, V-PAN, CURB RAMPS, INTERSECTION CORNERS, APRONS, AND LANDSCAPE BORDERS.
- ②0 202 - ABANDON PIPE. ABANDONED BY PLUGGING REMAINING ENDS WITH CONCRETE.
- ②2 202 - REMOVE EXISTING FIRE HYDRANT AND RETURN TO CITY SHOPS.
- ②5 202 - ABANDON EXISTING WATER VALVE. CLOSE VALVE, CLOSE CORP STOPS, REMOVE TOP HALF OF EXISTING VALVE BOX, FILL CAVITY TO FINISHED SUBGRADE WITH FLOW FILL MATERIAL.
- ①00 210 - RESET LANDSCAPE GROUND COVER. CONTRACTOR SHALL REMOVE GROUND COVER AND ANY UNDERLYING WEED BARRIER AS NEEDED AND STOCKPILE MATERIALS. CONTRACTOR SHALL RESET THESE MATERIALS AND PROVIDE ADDITIONAL MATERIALS AS NEEDED TO RESTORE LANDSCAPING.
- ④00 102.7/108.2 - WATER MAIN PIPE (C-900 DR-18 PVC) (SIZE AS SHOWN). INCLUDES TYPE A BEDDING AND HAUNCHING MATERIAL AND BACKFILL OF TRENCH WITH NATIVE MATERIALS MEETING 103.16 EARTH BACKFILL MATERIAL.
- ④03 102.8b/108.3 - GATE VALVE. (SIZE AS SHOWN)
- ④07 102.8/108.3 - TEE (SIZE AS SHOWN)
- ④12 102.8A/108.3 - FIRE HYDRANT
- ④13 102.7C/108.4 - WATER SERVICE LINE (TYPE K COPPER) (SIZE AS SHOWN ON PLAN) THE CONTRACT UNIT PRICE FOR WATER SERVICE PIPE SHALL INCLUDE THE COST OF CONNECTION TO WATERLINE INCLUDING ALL MATERIALS TO MAKE THE CONNECTION AND CLOSING ORIGINAL CORPORATION STOP.
- ④18 102.8J/108.4 - CORPORATION STOP (INSTALL ONLY) (SIZE AS SHOWN ON PLAN)
- ⑤69 608.06 - MONOLITHIC CURB, GUTTER AND SIDEWALK (5' WIDE)
- ⑥83 401.08 - HOT BITUMINOUS PAVEMENT (PATCHING) (4" THICK ON TOP OF 6" ABC) (GRADING 6X, BINDER GRADE PG 64-22, GYR 75) (TWO 2' LIFTS)
- ⑧26 CONTRACTOR IS RESPONSIBLE FOR REPAIR COSTS ASSOCIATED WITH ANY/ALL DAMAGE TO PRIVATE PROPERTY BEHIND ROW LINE OR EASEMENT LIMITS.



**NOTES:**

1. CONNECT TO EXISTING SERVICE LINES OR EXTEND SERVICE LINES TO NEW 6" WATERLINE
2. ALL CURB STOP AND SERVICE LINE LOCATIONS ARE APPROXIMATE AND SHALL BE VERIFIED IN THE FIELD PRIOR TO CONSTRUCTION
3. IF CURB STOP WAS NOT LOCATED FIELD LOCATE CURB STOP AND REPLACE EXIST SWIC CONNECTION WITH NEW CONNECTION TO NEW 6" WATERLINE

N:\2022\10\10\2022\Phase 1 - 2022\10\10\2022 - 02-09-24.dwg, 8/20/2022, 8:37 AM, zcf

REVISION	DESCRIPTION	DATE	DRAWN BY	DATE
1			ZCF	07.18.2022
2			LAL/ZCF	07.18.2022
3			JIM	07.18.2022
4				

**SCALES:**

PLAN & PROFILE	1" = 40'
SECTION	1" = 4'
DETAIL	1" = 1'

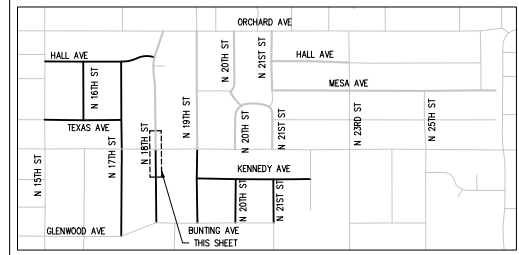
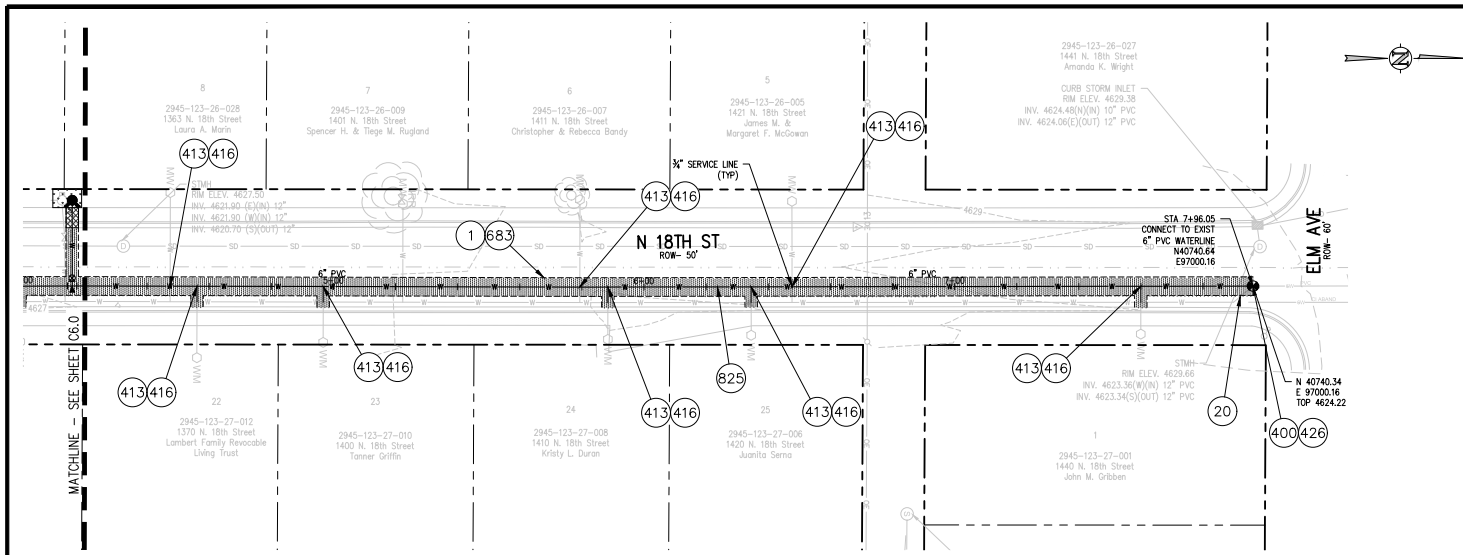


**2022 WATERLINE REPLACEMENT PROJECT - PHASE 1**  
**N 17TH ST WATER PLAN & PROFILE**

**C5.3**

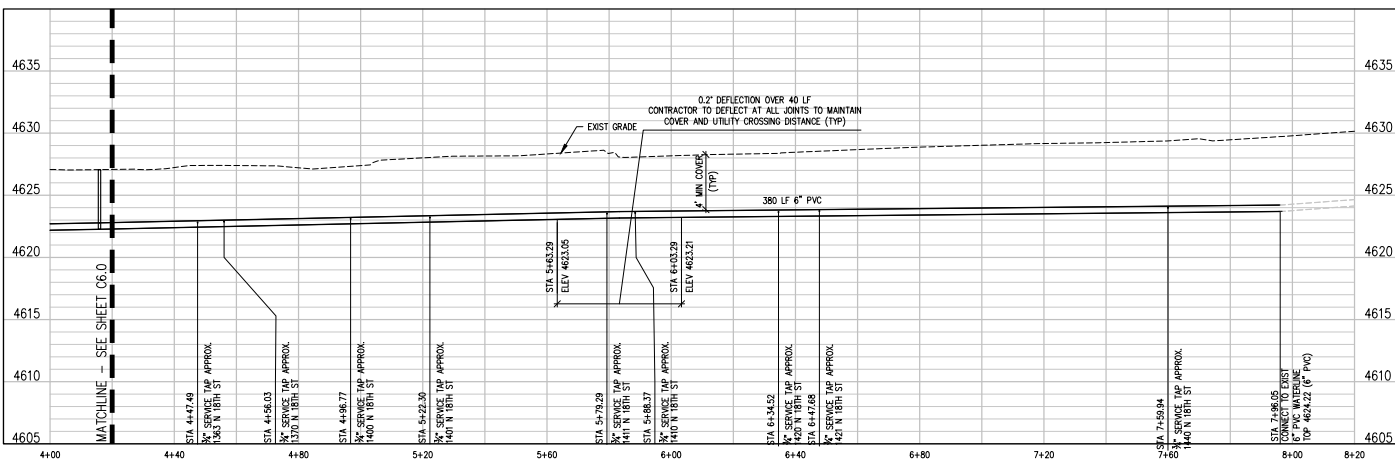






**CONSTRUCTION NOTES**

- 1 202 - REMOVAL OF ASPHALT MAT. SAW CUT AND REMOVE ASPHALT AS SHOWN, (INDICATED BY DOT HATCH PATTERN).
- 20 202 - ABANDON PIPE. ABANDONED BY PLUGGING REMAINING ENDS WITH CONCRETE.
- 400 102.7/108.2 - WATER MAIN PIPE (C-900 DR-18 PVC) (SIZE AS SHOWN). INCLUDES TYPE A BEDDING AND HAUNCHING MATERIAL AND BACKFILL OF TRENCH WITH NATIVE MATERIALS MEETING 103.16 EARTH BACKFILL MATERIAL.
- 413 102.7/108.4 - WATER SERVICE LINE (TYPE K COPPER) (SIZE AS SHOWN ON PLAN) THE CONTRACT UNIT PRICE FOR WATER SERVICE PIPE SHALL INCLUDE THE COST OF CONNECTION TO WATERLINE INCLUDING ALL MATERIALS TO MAKE THE CONNECTION AND CLOSING ORIGINAL CORPORATION STOP.
- 416 102.8J/108.4 - CORPORATION STOP (INSTALL ONLY) (SIZE AS SHOWN ON PLAN)
- 426 CONNECT TO EXISTING WATER PIPE/VALVE/FITTING. THE CONTRACT UNIT PRICE FOR WATER PIPE SHALL INCLUDE THE COST OF CONNECTION TO EXISTING PIPELINE
- 683 401.08 - HOT BITUMINOUS PAVEMENT (PATCHING) (4" THICK ON TOP OF 6" ABC) (GRADING SX, BINDER GRADE PG 64-22, GYR 75) (TWO 2" LIFTS)
- 825 CONTRACTOR IS RESPONSIBLE FOR REPAIR COSTS ASSOCIATED WITH ANY/ALL DAMAGE TO PRIVATE PROPERTY BEHIND ROW LINE OR EASEMENT LIMITS.



- NOTES:**
- CONNECT TO EXISTING SERVICE LINES OR EXTEND SERVICE LINES TO NEW 6" WATERLINE
  - ALL CURB STOP AND SERVICE LINE LOCATIONS ARE APPROXIMATE AND SHALL BE VERIFIED IN THE FIELD PRIOR TO CONSTRUCTION
  - IF CURB STOP WAS NOT LOCATED FIELD LOCATE CURB STOP AND REPLACE EXIST SWIC CONNECTION WITH NEW CONNECTION TO NEW 6" WATERLINE

N:\0710\10\10\10\Phase 1 - 2022\101101 - 02.dwg, 07/20/2022, 8:38 AM, zcf

REVISION	DESCRIPTION	DATE	DRAWN BY	DATE
REVISION			ZCF	07.18.2022
REVISION			LAL/ZCF	07.18.2022
REVISION			JJM	07.18.2022
REVISION				

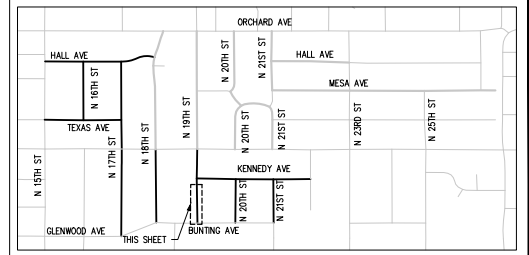
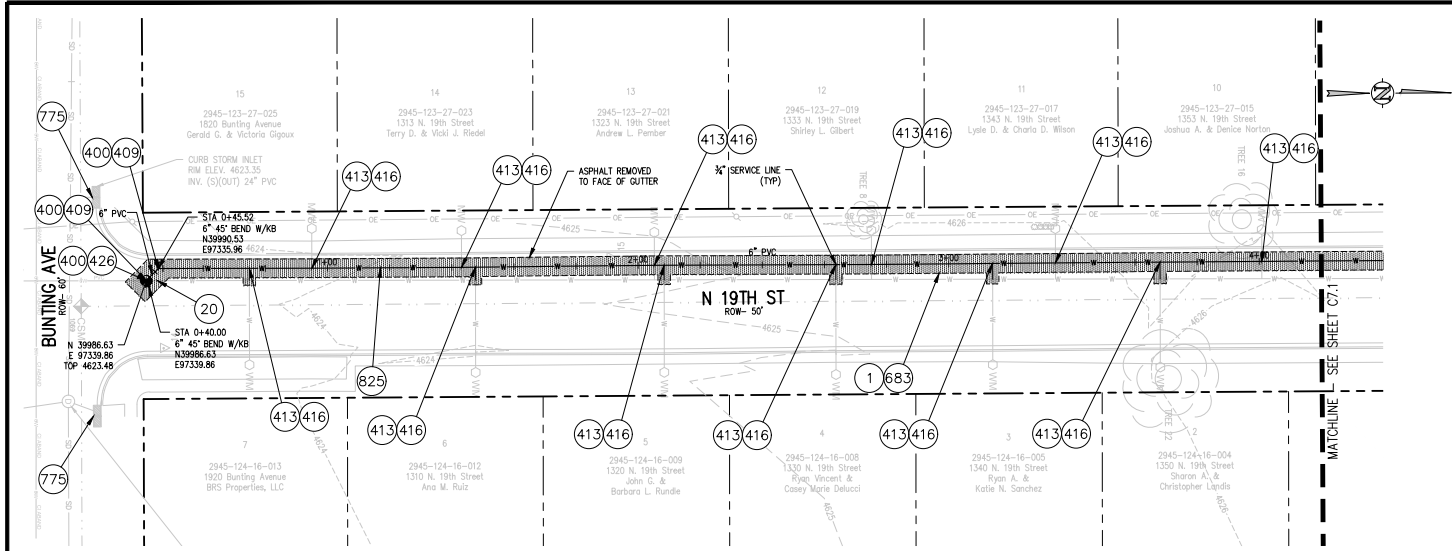
**SCALES:**

PLAN & PROFILE	1" = 40'
SECTION	1" = 10'
DETAIL	1" = 2'



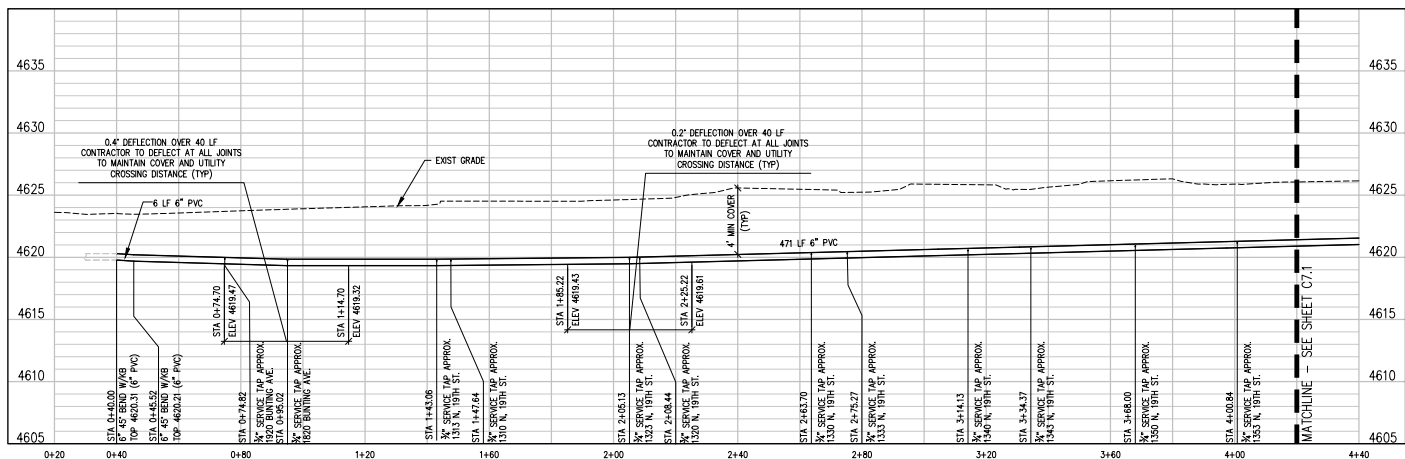
**2022 WATERLINE REPLACEMENT PROJECT - PHASE 1**  
**N 18TH ST WATER PLAN & PROFILE**

C6.1



**CONSTRUCTION NOTES**

- 1 202 - REMOVAL OF ASPHALT MAT. SAW CUT AND REMOVE ASPHALT AS SHOWN. (INDICATED BY DOT HATCH PATTERN).
- 20 202 - ABANDON PIPE. ABANDONED BY PLUGGING REMAINING ENDS WITH CONCRETE.
- 400 102.7/108.2 - WATER MAIN PIPE (C-90 DR-18 PVC) (SIZE AS SHOWN). INCLUDES TYPE A BEDDING AND HAUNCHING MATERIAL AND BACKFILL OF TRENCH WITH NATIVE MATERIALS MEETING 103.16 EARTH BACKFILL MATERIAL.
- 409 102.8/108.3 - ELBOW (SIZE AND ANGLE AS SHOWN)
- 413 102.7C/108.4 - WATER SERVICE LINE (TYPE K COPPER) (SIZE AS SHOWN ON PLAN) THE CONTRACT UNIT PRICE FOR WATER SERVICE PIPE SHALL INCLUDE THE COST OF CONNECTION TO WATERLINE INCLUDING ALL MATERIALS TO MAKE THE CONNECTION AND CLOSING ORIGINAL CORPORATION STOP.
- 416 102.8J/108.4 - CORPORATION STOP (INSTALL ONLY) (SIZE AS SHOWN ON PLAN)
- 426 CONNECT TO EXISTING WATER PIPE/VALVE/FITTING. THE CONTRACT UNIT PRICE FOR WATER PIPE SHALL INCLUDE THE COST OF CONNECTION TO EXISTING PIPELINE
- 683 401.08 - HOT BITUMINOUS PAVEMENT (PATCHING) (4" THICK ON TOP OF 6" ABC) (GRADING SX, BINDER PG 64-22, GYR 75) (TWO 2" LIFTS)
- 775 208 - STORM DRAIN INLET PROTECTION (EROSION CONTROL LOG) (AS SHOWN AND PER DETAIL)
- 825 CONTRACTOR IS RESPONSIBLE FOR REPAIR COSTS ASSOCIATED WITH ANY/ALL DAMAGE TO PRIVATE PROPERTY BEHIND ROW LINE OR EASEMENT LIMITS.



- NOTES:**
1. CONNECT TO EXISTING SERVICE LINES OR EXTEND SERVICE LINES TO NEW 6" WATERLINE
  2. ALL CURB STOP AND SERVICE LINE LOCATIONS ARE APPROXIMATE AND SHALL BE VERIFIED IN THE FIELD PRIOR TO CONSTRUCTION
  3. IF CURB STOP WAS NOT LOCATED FIELD LOCATE CURB STOP AND REPLACE EXIST SWIC CONNECTION WITH NEW CONNECTION TO NEW 6" WATERLINE

N:\2022\10\10\2022\Phase 1 - Bunting\100115 - 02.dwg - 10/10/2022 - 8:38 AM .dwt

REVISION	DESCRIPTION	DATE	DRAWN BY	DATE
1			ZCF	07.18.2022
2			LAL/ZCF	07.18.2022
3			JIM	07.18.2022
4				

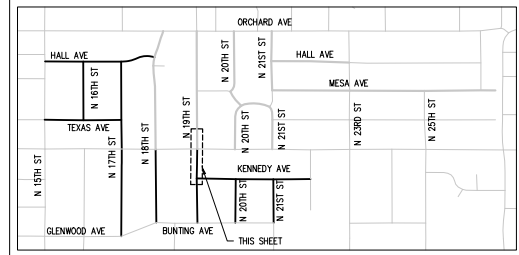
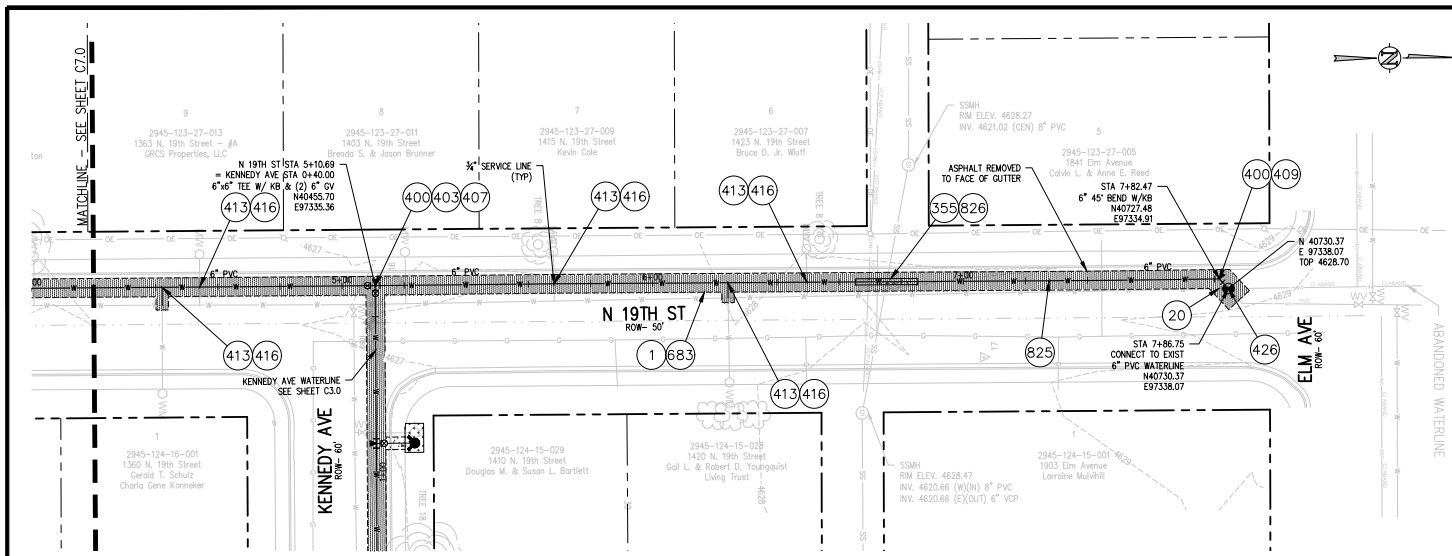
**SCALES:**

PLAN & PROFILE	1" = 40'
VERTICAL	1" = 4'



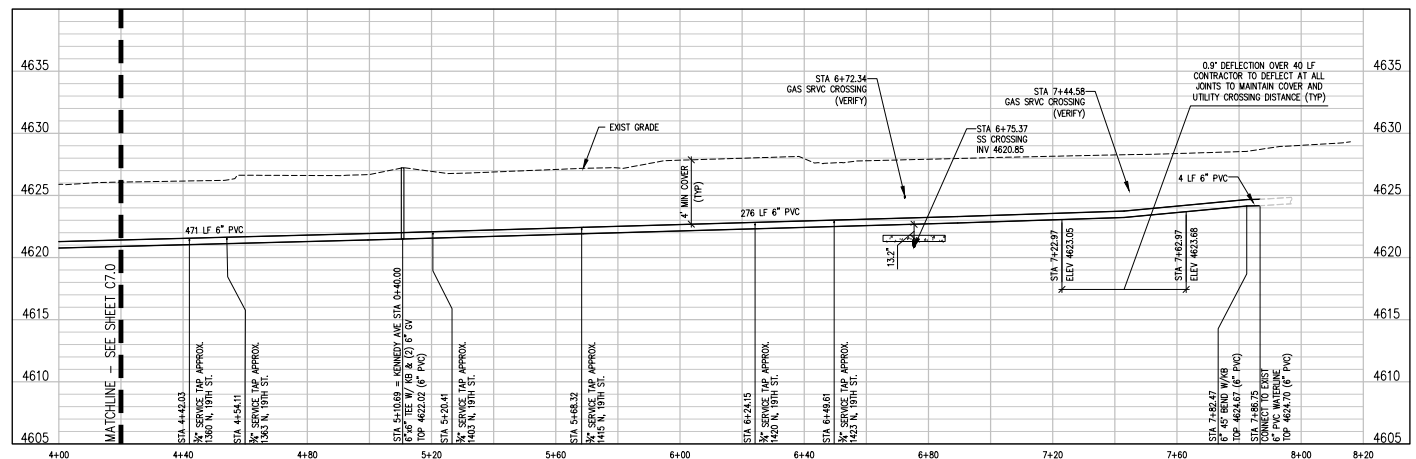
**2022 WATERLINE REPLACEMENT PROJECT - PHASE 1**  
**N 19TH ST WATER PLAN & PROFILE**





**CONSTRUCTION NOTES**

- 1 202 - REMOVAL OF ASPHALT MAT. SAW CUT AND REMOVE ASPHALT AS SHOWN. (INDICATED BY DOT HATCH PATTERN).
- 20 202 - ABANDON PIPE. ABANDONED BY PLUGGING REMAINING ENDS WITH CONCRETE.
- 355 104.40 - CAP TOP HALF OF SEWER IN CONCRETE PER STD. DETAIL GU-04. (WATER LINE LESS THAN 18" ABOVE SEWER LINE)
- 400 102.7/108.2 - WATER MAIN PIPE (C-900 DR-18 PVC) (SIZE AS SHOWN). INCLUDES TYPE A BEDDING AND HAUNCHING MATERIAL AND BACKFILL OF TRENCH WITH NATIVE MATERIALS MEETING 103.16 EARTH BACKFILL MATERIAL.
- 403 102.8b/108.3 - GATE VALVE. (SIZE AS SHOWN)
- 407 102.8/108.3 - TEE (SIZE AS SHOWN)
- 409 102.8/108.3 - ELBOW (SIZE AND ANGLE AS SHOWN)
- 413 102.7c/108.4 - WATER SERVICE LINE (TYPE K COPPER) (SIZE AS SHOWN ON PLAN) THE CONTRACT UNIT PRICE FOR WATER SERVICE PIPE SHALL INCLUDE THE COST OF CONNECTION TO WATERLINE INCLUDING ALL MATERIALS TO MAKE THE CONNECTION AND CLOSING ORIGINAL CORPORATION STOP.
- 416 102.8j/108.4 - CORPORATION STOP (INSTALL ONLY) (SIZE AS SHOWN ON PLAN)
- 426 CONNECT TO EXISTING WATER PIPE/VALVE/FITTING. THE CONTRACT UNIT PRICE FOR WATER PIPE SHALL INCLUDE THE COST OF CONNECTION TO EXISTING PIPELINE
- 683 401.08 - HOT BITUMINOUS PAVEMENT (PATCHING) (4" THICK ON TOP OF 6" ABC) (GRADING SX, BINDER GRADE PG 64-22, GYR 75) (TWO 2" LIFTS)
- 825 CONTRACTOR IS RESPONSIBLE FOR REPAIR COSTS ASSOCIATED WITH ANY/ALL DAMAGE TO PRIVATE PROPERTY BEHIND ROW LINE OR EASEMENT LIMITS.
- 826 PROTECT EXISTING UTILITY LINE IN PLACE.



**NOTES:**

- CONNECT TO EXISTING SERVICE LINES OR EXTEND SERVICE LINES TO NEW 6" WATERLINE
- ALL CURB STOP AND SERVICE LINE LOCATIONS ARE APPROXIMATE AND SHALL BE VERIFIED IN THE FIELD PRIOR TO CONSTRUCTION
- IF CURB STOP WAS NOT LOCATED FIELD LOCATE CURB STOP AND REPLACE EXIST SRVC CONNECTION WITH NEW CONNECTION TO NEW 6" WATERLINE

N:\0718\2022\Phase 1 - Waterline\2022-01-20\DWG\2022-01-20.dwg - 8:38 AM, 8/20/2022

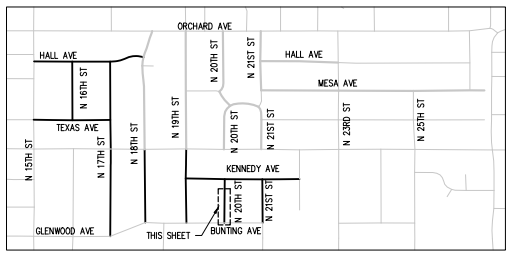
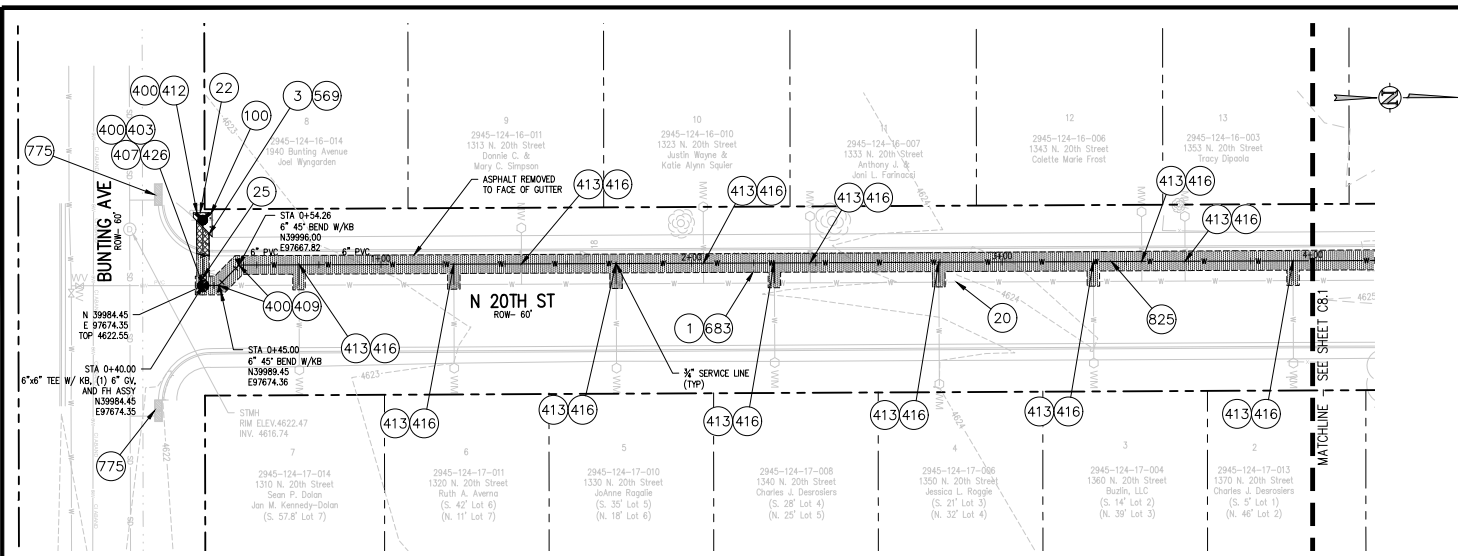
REVISION	DESCRIPTION	DATE	DRAWN BY	DATE
REVISION A			JCF	07.18.2022
REVISION B			LAL/JCF	07.18.2022
REVISION C			JIM	07.18.2022
REVISION D				

**SCALES:**

PLAN & PROFILE	1" = 40'
VERTICAL	1" = 4'
HYDRAULIC	1" = 100'

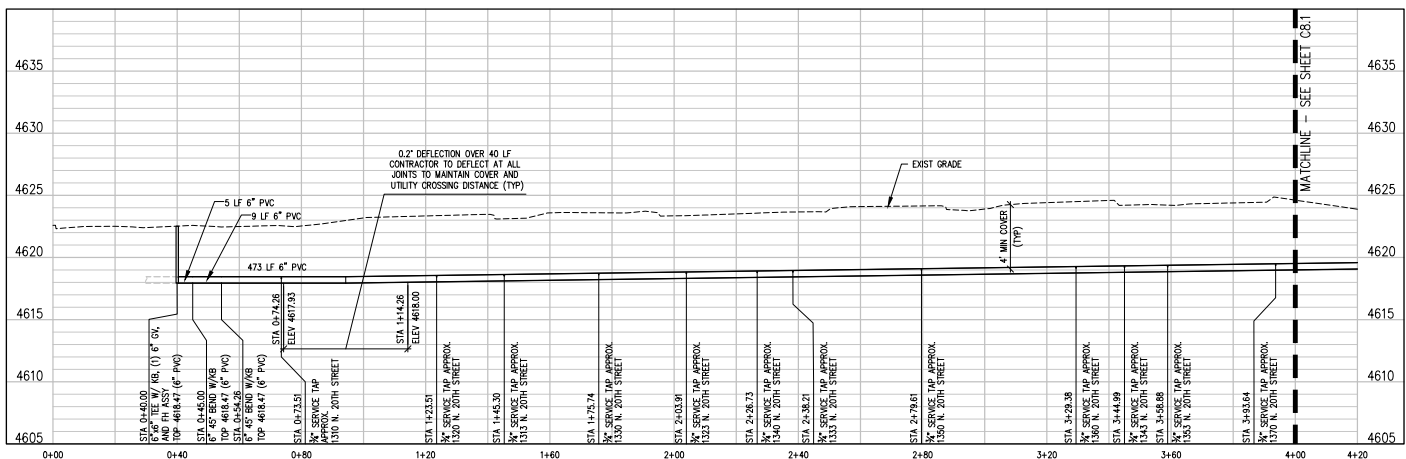


**2022 WATERLINE REPLACEMENT PROJECT - PHASE 1**  
**N 19TH ST WATER PLAN & PROFILE**



**CONSTRUCTION NOTES**

- 1 202 - REMOVAL OF ASPHALT MAT. SAW CUT AND REMOVE ASPHALT AS SHOWN. (INDICATED BY DOT HATCH PATTERN).
- 3 202 - REMOVAL OF CONCRETE. SAW CUT AND REMOVE CONCRETE AS SHOWN. (INDICATED BY CROSS HATCH PATTERN) INCLUDES BUT NOT LIMITED TO CURB, GUTTER, SIDEWALK, DRIVEWAY, SLABS, V-PAN, CURB RAMPS, INTERSECTION CORNERS, APRONS, AND LANDSCAPE BORDERS
- 20 202 - ABANDON PIPE. ABANDONED BY PLUGGING REMAINING ENDS WITH CONCRETE.
- 22 202 - REMOVE EXISTING FIRE HYDRANT AND RETURN TO CITY SHOPS.
- 25 202 - ABANDON EXISTING WATER VALVE. CLOSE VALVE, REMOVE TOP HALF OF EXISTING VALVE BOX, FILL CAVITY TO FINISHED SUBGRADE WITH FLOW FILL MATERIAL.
- 100 210 - RESET LANDSCAPE GROUND COVER. CONTRACTOR SHALL REMOVE GROUND COVER AND ANY UNDERLYING WEED BARRIER AS NEEDED AND STOCKPILE MATERIALS. CONTRACTOR SHALL RESET THESE MATERIALS AND PROVIDE ADDITIONAL MATERIALS AS NEEDED TO RESTORE LANDSCAPING.
- 400 102.7/108.2 - WATER MAIN PIPE (C-900 DR-18 PVC) (SIZE AS SHOWN). INCLUDES TYPE A BEDDING AND HAUNCHING MATERIAL AND BACKFILL OF TRENCH WITH NATIVE MATERIALS MEETING 103.16 EARTH BACKFILL MATERIAL.
- 403 102.8b/108.3 - GATE VALVE. (SIZE AS SHOWN)
- 407 102.8/108.3 - TEE (SIZE AS SHOWN)
- 409 102.8/108.3 - ELBOW (SIZE AND ANGLE AS SHOWN)
- 412 102.8a/108.3 - FIRE HYDRANT
- 413 102.7C/108.4 - WATER SERVICE LINE (TYPE K COPPER) (SIZE AS SHOWN ON PLAN) THE CONTRACT UNIT PRICE FOR WATER SERVICE PIPE SHALL INCLUDE THE COST OF CONNECTION TO WATERLINE INCLUDING ALL MATERIALS TO MAKE THE CONNECTION AND CLOSING ORIGINAL CORPORATION STOP.
- 416 102.8J/108.4 - CORPORATION STOP (INSTALL ONLY) (SIZE AS SHOWN ON PLAN)
- 426 CONNECT TO EXISTING WATER PIPE/VALVE/FITTING. THE CONTRACT UNIT PRICE FOR WATER PIPE SHALL INCLUDE THE COST OF CONNECTION TO EXISTING PIPELINE
- 569 608.06 - MONOLITHIC CURB, GUTTER AND SIDEWALK (5' WIDE
- 683 401.08 - HOT BITUMINOUS PAVEMENT (PATCHING) (4" THICK ON TOP OF 6" ABC) (GRADING SX, BINDER GRADE PG 64-22, GYR 75) (TWO 2" LIFTS)
- 775 208 - STORM DRAIN INLET PROTECTION (EROSION CONTROL LOG) (AS SHOWN AND PER DETAIL)
- 825 CONTRACTOR IS RESPONSIBLE FOR REPAIR COSTS ASSOCIATED WITH ANY/ALL DAMAGE TO PRIVATE PROPERTY BEHIND ROW LINE OR EASEMENT LIMITS.



- NOTES:**
1. CONNECT TO EXISTING SERVICE LINES OR EXTEND SERVICE LINES TO NEW 6\"/>

N:\2024\20240718\Phase 1 - Bunting\20240718 - 02.dwg (7/18/2024) - 8:59 AM, rjf

REVISION	DESCRIPTION	DATE	DRAWN BY	DATE
REVISION A			ZCF	07.18.2022
REVISION B			LAL/ZCF	07.18.2022
REVISION C			JJM	07.18.2022
REVISION D				

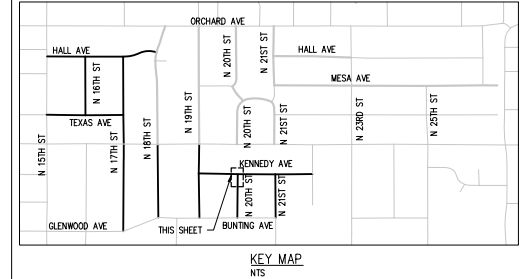
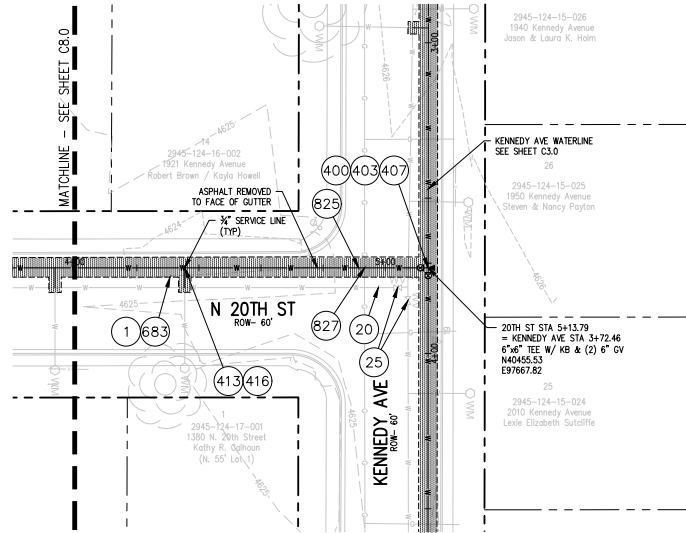
**SCALES:**

PLAN & PROFILE	1" = 40'
VERTICAL	1" = 4'
HYDROLOGICAL	1" = 10'



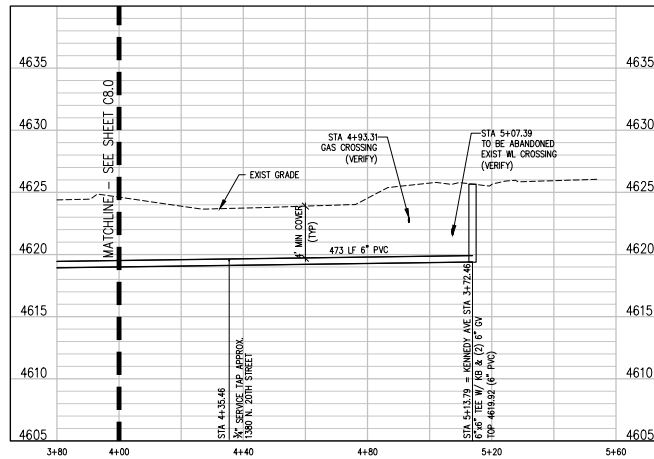
**2022 WATERLINE REPLACEMENT PROJECT - PHASE 1**  
**N 20TH ST WATER PLAN & PROFILE**

**C8.0**



**CONSTRUCTION NOTES**

- 1 202 - REMOVAL OF ASPHALT MAT. SAW CUT AND REMOVE ASPHALT AS SHOWN. (INDICATED BY DOT HATCH PATTERN).
- 20 202 - ABANDON PIPE. ABANDONED BY PLUGGING REMAINING ENDS WITH CONCRETE.
- 25 202 - ABANDON EXISTING WATER VALVE. CLOSE VALVE, REMOVE TOP HALF OF EXISTING VALVE BOX, FILL CAVITY TO FINISHED SUBGRADE WITH FLOW FILL MATERIAL.
- 400 102.7/108.2 - WATER MAIN PIPE (C-900 DR-18 PVC) (SIZE AS SHOWN). INCLUDES TYPE A BEDDING AND HAUNCHING MATERIAL AND BACKFILL OF TRENCH WITH NATIVE MATERIALS MEETING 103.16 EARTH BACKFILL MATERIAL.
- 403 102.8/108.3 - GATE VALVE. (SIZE AS SHOWN)
- 407 102.8/108.3 - TEE (SIZE AS SHOWN)
- 413 102.7C/108.4 - WATER SERVICE LINE (TYPE K COPPER) (SIZE AS SHOWN ON PLAN) THE CONTRACT UNIT PRICE FOR WATER SERVICE PIPE SHALL INCLUDE THE COST OF CONNECTION TO WATERLINE INCLUDING ALL MATERIALS TO MAKE THE CONNECTION AND CLOSING ORIGINAL CORPORATION STOP.
- 416 102.8J/108.4 - CORPORATION STOP (INSTALL ONLY) (SIZE AS SHOWN ON PLAN)
- 683 401.08 - HOT BITUMINOUS PAVEMENT (PATCHING) (4" THICK ON TOP OF 6" ABC) (GRADING SX, BINDER GRADE PG 64-22, GYR 75) (TWO 2" LIFTS)
- 825 CONTRACTOR IS RESPONSIBLE FOR REPAIR COSTS ASSOCIATED WITH ANY/ALL DAMAGE TO PRIVATE PROPERTY BEHIND ROW LINE OR EASEMENT LIMITS.
- 827 PROTECT EXISTING GAS.



- NOTES:**
1. CONNECT TO EXISTING SERVICE LINES OR EXTEND SERVICE LINES TO NEW 6" WATERLINE
  2. ALL CURB STOP AND SERVICE LINE LOCATIONS ARE APPROXIMATE AND SHALL BE VERIFIED IN THE FIELD PRIOR TO CONSTRUCTION
  3. IF CURB STOP WAS NOT LOCATED FIELD LOCATE CURB STOP AND REPLACE EXIST SRVC CONNECTION WITH NEW CONNECTION TO NEW 6" WATERLINE

REVISION	DESCRIPTION	DATE	DRAWN BY	DATE
1			ZCF	07.18.2022
2			LAL/ZCF	07.18.2022
3			JJM	07.18.2022
4				

**SCALES:**

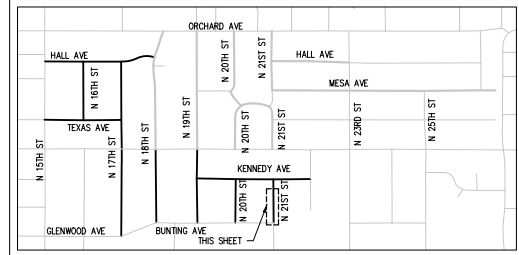
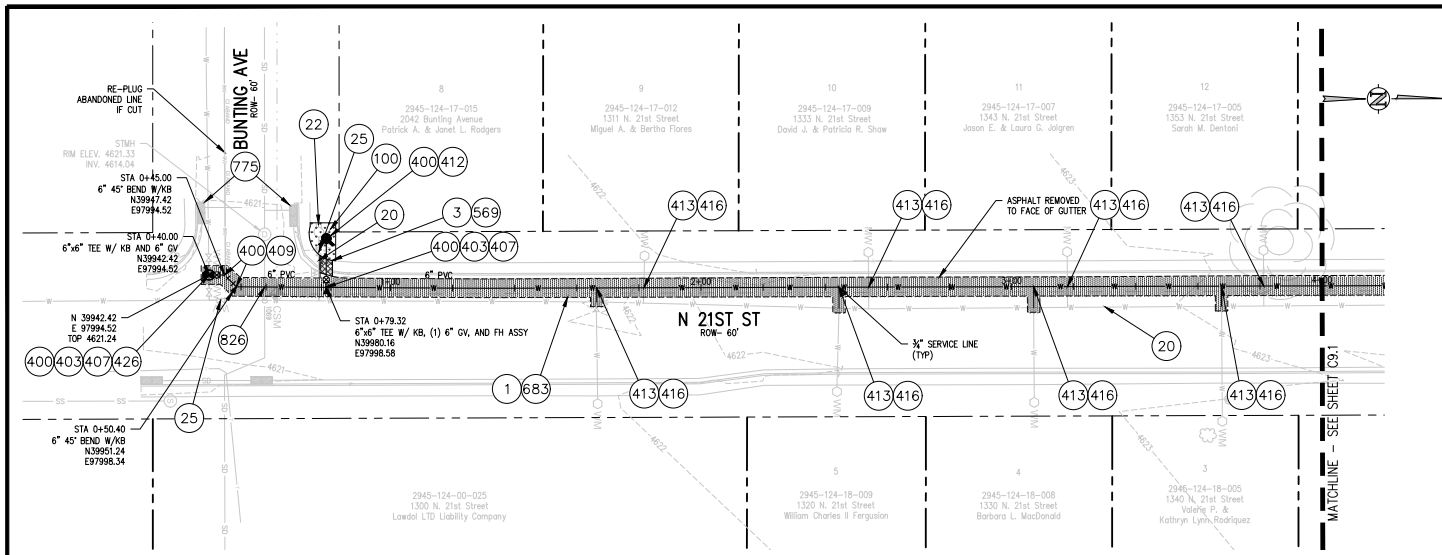
PLAN & PROFILE	1" = 40'
VERTICAL	1" = 4'
HYDRAULIC	1" = 100'



**2022 WATERLINE REPLACEMENT PROJECT - PHASE 1**  
**N 20TH ST WATER PLAN & PROFILE**

C8.1

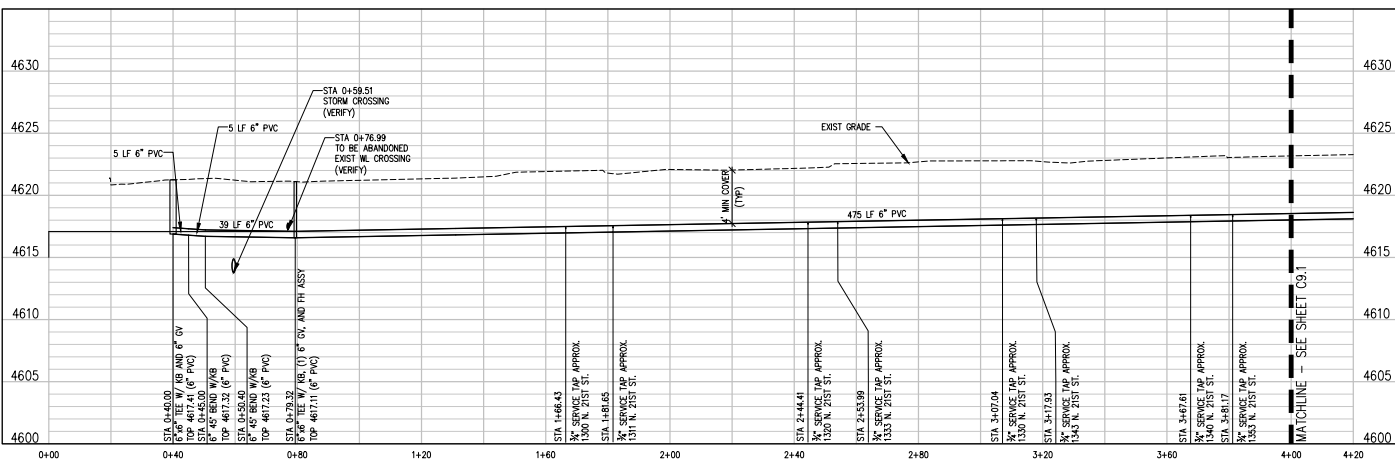
N:\2022\10\10\2022\Phase 1 - 2022\10\10\2022 - 02-2022-07.rvt - 07/20/2022 - 8:39 AM.rvt



**CONSTRUCTION NOTES**

- ① 202 - REMOVAL OF ASPHALT MAT. SAW CUT AND REMOVE ASPHALT AS SHOWN. (INDICATED BY DOT HATCH PATTERN).
- ③ 202 - REMOVAL OF CONCRETE. SAW CUT AND REMOVE CONCRETE AS SHOWN. (INDICATED BY CROSS HATCH PATTERN) INCLUDES BUT NOT LIMITED TO CURB, GUTTER, SIDEWALK, DRIVEWAY, SLABS, V-PAN, CURB RAMPS, INTERSECTION CORNERS, APRONS, AND LANDSCAPE BORDERS.
- ②0 202 - ABANDON PIPE. ABANDONED BY PLUGGING REMAINING ENDS WITH CONCRETE.
- ②② 202 - REMOVE EXISTING FIRE HYDRANT AND RETURN TO CITY SHOPS.
- ②⑤ 202 - ABANDON EXISTING WATER VALVE. CLOSE VALVE, REMOVE TOP HALF OF EXISTING VALVE BOX, FILL CAVITY TO FINISHED SUBGRADE WITH FLOW FILL MATERIAL.
- ①00 210 - RESET LANDSCAPE GROUND COVER. CONTRACTOR SHALL REMOVE GROUND COVER AND ANY UNDERLYING WEED BARRIER AS NEEDED AND STOCKPILE MATERIALS. CONTRACTOR SHALL RESET THESE MATERIALS AND PROVIDE ADDITIONAL MATERIALS AS NEEDED TO RESTORE LANDSCAPING.
- ④00 102.7/108.2 - WATER MAIN PIPE (C-900 DR-18 PVC) (SIZE AS SHOWN), INCLUDES TYPE A BEDDING AND HAUNCHING MATERIAL AND BACKFILL OF TRENCH WITH NATIVE MATERIALS MEETING 103.16 EARTH BACKFILL MATERIAL.
- ④03 102.8b/108.3 - GATE VALVE. (SIZE AS SHOWN)
- ④07 102.8/108.3 - TEE (SIZE AS SHOWN)
- ④09 102.8/108.3 - ELBOW (SIZE AND ANGLE AS SHOWN)
- ④12 102.8a/108.3 - FIRE HYDRANT
- ④13 102.7C/108.4 - WATER SERVICE LINE (TYPE K COPPER) (SIZE AS SHOWN ON PLAN) THE CONTRACT UNIT PRICE FOR WATER SERVICE PIPE SHALL INCLUDE THE COST OF CONNECTION TO WATERLINE INCLUDING ALL MATERIALS TO MAKE THE CONNECTION AND CLOSING ORIGINAL CORPORATION STOP.
- ④16 102.8J/108.4 - CORPORATION STOP (INSTALL ONLY) (SIZE AS SHOWN ON PLAN)
- ④26 CONNECT TO EXISTING WATER PIPE/VALVE/FITTING. THE CONTRACT UNIT PRICE FOR WATER PIPE SHALL INCLUDE THE COST OF CONNECTION TO EXISTING PIPELINE
- ⑤69 608.06 - MONOLITHIC CURB, GUTTER AND SIDEWALK (5' WIDE)
- ⑥83 401.08 - HOT BITUMINOUS PAVEMENT (PATCHING) (4" THICK ON TOP OF 6" ABC) (GRADING SX, BINDER GRADE PG 64-22, GYR 75) (TWO 2" LIFTS)
- ⑦75 208 - STORM DRAIN INLET PROTECTION (EROSION CONTROL LOG) (AS SHOWN AND PER DETAIL)
- ⑧25 CONTRACTOR IS RESPONSIBLE FOR REPAIR COSTS ASSOCIATED WITH ANYALL DAMAGE TO PRIVATE PROPERTY BEHIND ROW LINE OR EASEMENT LIMITS.
- ⑧26 PROTECT EXISTING UTILITY LINE IN PLACE.

- NOTES:**
1. CONNECT TO EXISTING SERVICE LINES OR EXTEND SERVICE LINES TO NEW 6" WATERLINE
  2. ALL CURB STOP AND SERVICE LINE LOCATIONS ARE APPROXIMATE AND SHALL BE VERIFIED IN THE FIELD PRIOR TO CONSTRUCTION
  3. IF CURB STOP WAS NOT LOCATED FIELD LOCATE CURB STOP AND REPLACE EXIST SRVC CONNECTION WITH NEW CONNECTION TO NEW 6" WATERLINE



N:\2022\10\10\2022\Phase 1 - Bunting\1112 - 02-09-2022 - 8:59 AM.dwg

REVISION	DESCRIPTION	DATE	DRAWN BY	DATE
REVISION A			ZCF	07.18.2022
REVISION B			LAL/ZCF	07.18.2022
REVISION C			JIM	07.18.2022
REVISION D				

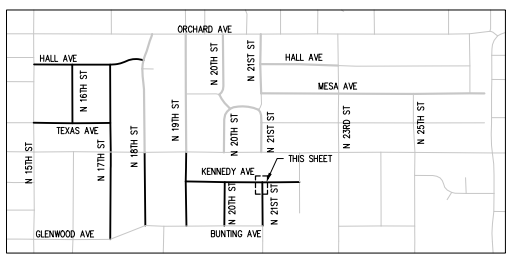
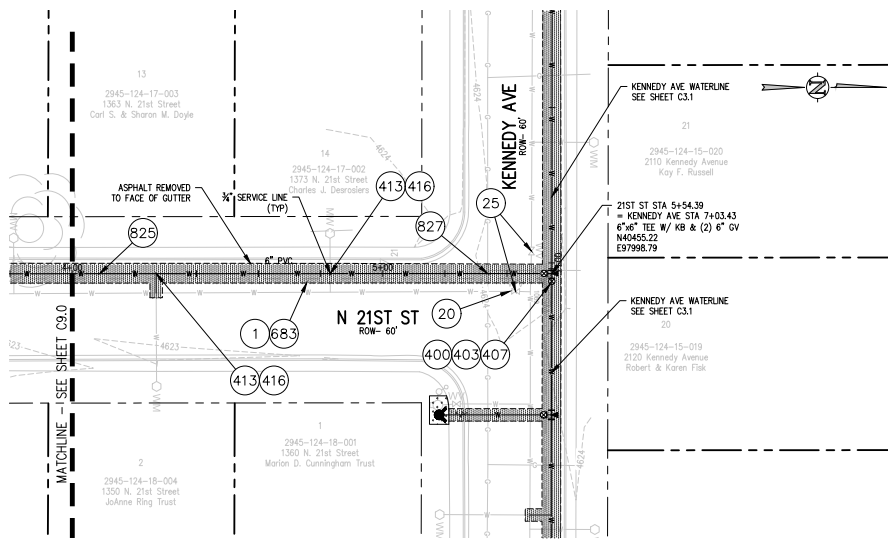
SCALES:

PLAN & PROFILE	1" = 40'
VERTICAL	1" = 4'



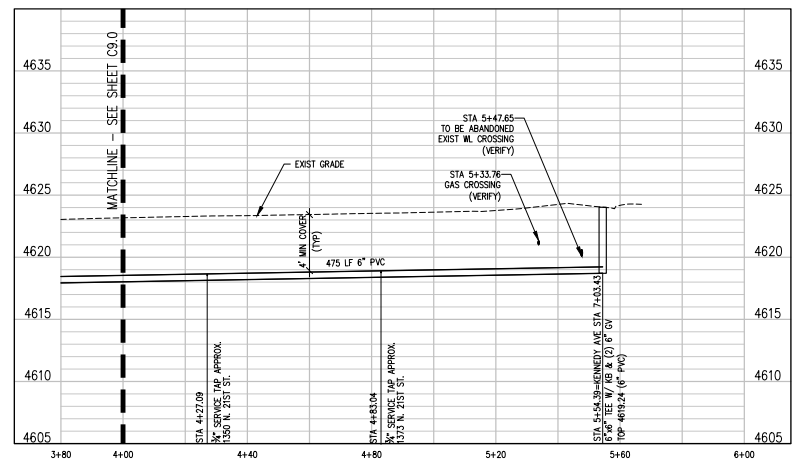
**2022 WATERLINE REPLACEMENT PROJECT - PHASE 1**  
**N 21ST ST WATER PLAN & PROFILE**

**C9.0**



**CONSTRUCTION NOTES**

- 1 202 - REMOVAL OF ASPHALT MAT. SAW CUT AND REMOVE ASPHALT AS SHOWN. (INDICATED BY DOT HATCH PATTERN).
- 202 - ABANDON PIPE. ABANDONED BY PLUGGING REMAINING ENDS WITH CONCRETE.
- 25 202 - ABANDON EXISTING WATER VALVE. CLOSE VALVE. REMOVE TOP HALF OF EXISTING VALVE BOX. FILL CAVITY TO FINISHED SUBGRADE WITH FLOW FILL MATERIAL.
- 400 102.7/108.2 - WATER MAIN PIPE (C-900 DR-18 PVC) (SIZE AS SHOWN). INCLUDES TYPE A BEDDING AND HAUNCHING MATERIAL AND BACKFILL OF TRENCH WITH NATIVE MATERIALS MEETING 103.16 EARTH BACKFILL MATERIAL.
- 403 102.8b/108.3 - GATE VALVE. (SIZE AS SHOWN)
- 407 102.8/108.3 - TEE (SIZE AS SHOWN)
- 413 102.7c/108.4 - WATER SERVICE LINE (TYPE K COPPER) (SIZE AS SHOWN ON PLAN) THE CONTRACT UNIT PRICE FOR WATER SERVICE PIPE SHALL INCLUDE THE COST OF CONNECTION TO WATERLINE INCLUDING ALL MATERIALS TO MAKE THE CONNECTION AND CLOSING ORIGINAL CORPORATION STOP.
- 416 102.8j/108.4 - CORPORATION STOP (INSTALL ONLY) (SIZE AS SHOWN ON PLAN)
- 683 401.08 - HOT BITUMINOUS PAVEMENT (PATCHING) (4" THICK ON TOP OF 6" ABC) (GRADING SX, BINDER GRADE PG 64-22, GYR 75) (TWO 2' LIFTS)
- 825 CONTRACTOR IS RESPONSIBLE FOR REPAIR COSTS ASSOCIATED WITH ANY/ALL DAMAGE TO PRIVATE PROPERTY BEHIND ROW LINE OR EASEMENT LIMITS.
- 827 PROTECT EXISTING GAS.



- NOTES:**
1. CONNECT TO EXISTING SERVICE LINES OR EXTEND SERVICE LINES TO NEW 6" WATERLINE (TYP)
  2. ALL CURB STOP AND SERVICE LINE LOCATIONS ARE APPROXIMATE AND SHALL BE VERIFIED IN THE FIELD PRIOR TO CONSTRUCTION
  3. IF CURB STOP WAS NOT LOCATED FIELD LOCATE CURB STOP AND REPLACE EXIST SRVC CONNECTION WITH NEW CONNECTION TO NEW 6" WATERLINE

N:\0710\071000\Phase 1 - Bunting\1112 - 02-09-2022 - 8:59 AM.dwg

REVISION	DESCRIPTION	DATE	DRAWN BY	DATE
1			ZCF	07.18.2022
2			LAL/ZCF	07.18.2022
3			JJM	07.18.2022

**SCALES:**

PLAN & PROFILE	AS SHOWN
VERTICAL	AS SHOWN



**2022 WATERLINE REPLACEMENT PROJECT - PHASE 1**  
**N 21ST ST WATER PLAN & PROFILE**

**C9.1**