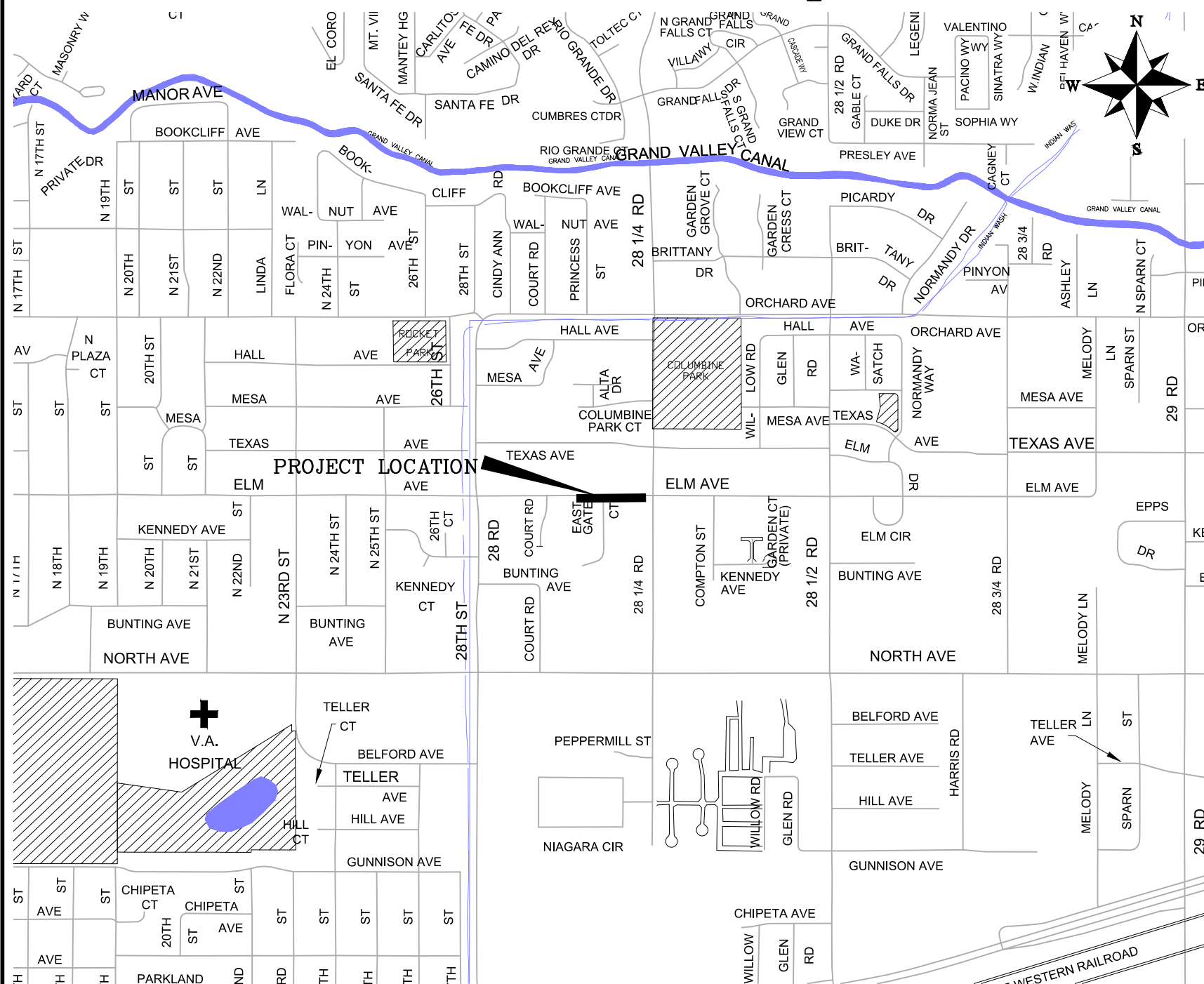


# CITY OF GRAND JUNCTION 2022 SIDEWALKS FOR SAFE ROUTES TO SCHOOL – ELM AVENUE

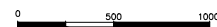
## September 8, 2022



### Sheet Index

- 1 COVER
- 2 STANDARD ABBREVIATIONS LEGENDS AND SYMBOLS
- 3 SUMMARY OF APPROXIMATE QUANTITIES
- 4 PARCEL MAP
- 5 REMOVAL PLAN
- 6 IMPROVEMENT PLAN
- 7 FL PROFILE
- 8 STAKING PLAN - 1
- 9 STAKING PLAN - 2
- 10 STAKING PLAN - 3
- 11 SECTION VIEWS - 1
- 12 SECTION VIEWS - 2

### VICINITY MAP



*Public Works  
Engineering Division*

NOTE: NOTIFY AFFECTED UTILITY VENDOR 48 HOURS PRIOR TO EXCAVATIONS THAT WILL EXPOSE UTILITY LINES. THE COVER SHEET WILL HAVE A LISTING OF UTILITY VENDORS AND TELEPHONE NUMBERS.

REVISION	DESCRIPTION	DATE
REVISION		
REVISION		
REVISION		
REVISION		



Know what's below.  
Call before you dig.

**ABBREVIATIONS**

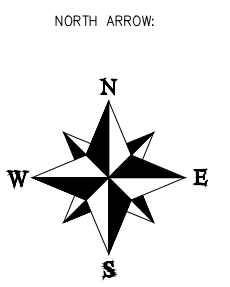
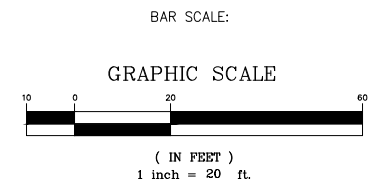
AASHTO	AMERICAN ASSOCIATION OF STATE HIGHWAY & TRANSPORTATION OFFICIALS
ABC	AGGREGATE BASE COURSE
AC	ASBESTOS CEMENT
AP	ANGLE POINT
ASB	ANCHORED STRAW BALES
ASP	ALUMINIZED STEEL PIPE
ASTM	AMERICAN SOCIETY FOR TESTING MATERIALS
AWWA	AMERICAN WATER WORKS ASSOCIATION
BC	BACK OF CURB
BF	BUTTERFLY VALVE
BOW	BACK OF WALK
BCR	BEGIN CURB RETURN
BOT	BOTTOM
BSWMP	BETTER STORM WATER MANAGEMENT PRACTICES
CH	CHORD
CAP	CORRUGATED ALUMINUM PIPE
CDOT	COLORADO DEPARTMENT OF TRANSPORTATION
CI	CAST IRON
C.G.& SW	CURB, GUTTER & SIDEWALK
CL	CENTER LINE
CL	CLEAR
CMP	CORRUGATED METAL PIPE
CO	CLEAN OUT
COMB	COMBINATION (AS IN STORM SEWER AND SANITARY SEWER)
CONC	CONCRETE
CSM	CITY SURVEY MONUMENT
CSP	CORRUGATED STEEL PIPE
CU	COPPER
DI	DUCTILE IRON
DWY	DRIVEWAY
E	ELECTRIC
ECR	END CURB RETURN
EG	EDGE OF GUTTER
EL	ELEVATION
EP	EDGE OF PAVEMENT
EX	EXISTING
FB	FULL BODY
FC	FACE OF CURB
FG	FINISHED GRADE
E	FLOW LINE
FL	FLANGE
FM	FORCE MAIN
FO	FIBER OPTICS
FS	FAR SIDE
FTG	FOOTING
G	GAS
GB	GRADE BREAK
GM	GAS METER
GV	GATE VALVE
HBP	HOT BITUMINOUS PAVEMENT
HDPE	HIGH DENSITY POLYETHYLENE
INV	INVERT
IRR	IRRIGATION
L	LENGTH OF ARC
LC	LONG CHORD
LF	LINEAR FEET
LL	LONG ARC
LS	SHORT ARC
LT	LEFT
MB	MAILBOX
MCSM	MESA COUNTY SURVEY MONUMENT
MH	MANHOLE
MJ	MECHANICAL JOINT
MW	MILL WRAP
N/A	NOT APPLICABLE
NIC	NOT IN CONTRACT
NRP	NO ONE PERSON
NRCP	NON-REINFORCED CONCRETE PIPE
NS	NEAR SIDE
NTS	NOT TO SCALE
OHP	OVERHEAD POWER
OHT	OVERHEAD TELEPHONE
PC	POINT OF CURVATURE
PCC	POINT OF COMPOUND CURVATURE
PE	POLYETHYLENE
PERF	PERFORATED
PI	POINT OF INTERSECTION
PIP	PLASTIC IRRIGATION PIPE
POC	POINT ON CURVE
POT	POINT ON TANGENT
PR	PROPOSED
PRC	POINT OF REVERSE CURVATURE
PT	POINT OF TANGENCY
PVC	POLYVINYL CHLORIDE
R	RADIUS
RCP	REINFORCED CONCRETE PIPE
REQ'D	REQUIRED
RG	RESTRAINED GLANDS
RL	LONG RADIUS
ROW	RIGHT OF WAY
RP	RADIUS POINT
RR	RAIL ROAD
RS	SHORT RADIUS
RT	RIGHT
S	SLOPE
SAN	SANITARY
SC	SHORT CHORD
SCD	STANDARD CONTRACT DOCUMENTS
SCH	SCHEDULE
SF	SILT FENCE
SL	SECTION LINE
SSRB	STANDARD SPECIFICATIONS FOR ROAD & BRIDGE CONSTRUCTION
SSUU	STANDARD SPECIFICATIONS FOR CONSTRUCTION OF UNDERGROUND UTILITIES
STA	STATION
STL	STEEL
STM	STORM
T	TELEPHONE
TAN	LENGTH OF TANGENT
TC	TOP OF CURB
TH	TEST HOLE
TV	TELEVISION
(TYP)	TYPICAL
UU	UNDERGROUND UTILITIES
VC	VERTICAL CURVE
VCP	VITRIFIED CLAY PIPE
VPC	VERTICAL POINT OF CURVATURE
VPCC	VERTICAL POINT OF COMPOUND CURVATURE
VPRC	VERTICAL POINT OF REVERSE CURVATURE
VPI	VERTICAL POINT OF INTERSECTION
VPT	VERTICAL POINT OF TANGENCY
W	WATER
Δ	DELTA ANGLE

**LEGEND**

BSWMP DRAINAGE BASIN BOUNDARY		PROPOSED CONCRETE CURB AND GUTTER	
BSWMP ANCHORED STRAW BALES		PROPOSED CONCRETE CURB, GUTTER, & SIDEWALK	
BSWMP SILT FENCE		PROPOSED CONCRETE SIDEWALK	
BUILDING		PROPOSED "WET" UTILITIES (CONSTRUCTION NOTE WILL INDICATE TYPE, SIZE, AND MATERIAL OF NEW MAIN)	
CONCRETE CURB AND GUTTER		ALL PROPOSED FEATURES NOT SHOWN IN LEGEND WILL BE SHOWN THE SAME AS THEIR EXISTING COUNTERPART, BUT INDICATED BY BOLDER LINETYPE	
CONCRETE CURB, GUTTER, & SIDEWALK			
CONCRETE DITCH			
CONCRETE SIDEWALK			
CULVERT		RAIL ROAD	
EARTH DITCH		RETAINING WALL	
EDGE OF GRAVEL		STRIPING (CONTINUOUS WHITE)	
EDGE OF PAVEMENT		STRIPING (DASHED WHITE)	
FENCE (HT & MATL NOTED)		STRIPING (CONTINUOUS YELLOW)	
GUARD RAIL		STRIPING (DASHED YELLOW)	
HATCHING: INDICATES ASPHALT REMOVAL		TOP OF SLOPE	
HATCHING: INDICATES CONCRETE REMOVAL		CONTOUR LINES (SHOWN BETWEEN TOP & TOE)	
HATCHING: INDICATES STAGING AREA		TOE OF SLOPE	
LINE (CENTER OF IMPROVEMENTS)		TRAFFIC DETECTOR LOOP	
LINE (CITY LIMITS)		UTILITY LINE (ABANDON) (THIS CASE A WATER LINE)	
LINE (CONTROL)		UTILITY LINE (CABLE TV)	
LINE (EASEMENT)		UTILITY LINE (ELECTRIC)	
LINE (MONUMENT/SECTION)		UTILITY LINE (FIBER OPTIC)	
LINE (PROPERTY)		UTILITY LINE (GAS)	
LINE (RIGHT OF WAY)		UTILITY LINE (HIGH VOLTAGE OVERHEAD POWER)	
MATCH LINE		UTILITY LINE (OVERHEAD POWER)	
PIPE (IRRIGATION)		UTILITY LINE (OVERHEAD TELEPHONE)	
PIPE (SIPHON)		UTILITY LINE (SANITARY SEWER)	
		UTILITY LINE (SANITARY SEWER FORCE MAIN)	
		UTILITY LINE (SANITARY SEWER SERVICE)	
		UTILITY LINE (STORM SEWER)	
		UTILITY LINE (STORM SEWER, PERFORATED)	
		UTILITY LINE (STORM/SANITARY SEWER SEWER COMBINATION)	
		UTILITY LINE (TELEPHONE)	
		UTILITY LINE (WATER)	

**SYMBOLS**

BENCH MARK	
CATCH BASIN	
CLEAN OUT	
CURB STOP	
FIRE HYDRANT	
GUY WIRE ANCHOR	
HEADGATE	
IRRIGATION PUMP	
MAILBOX	
MANHOLE (ELECTRIC)	
MANHOLE (GAS)	
MANHOLE (SANITARY/STORM)	
MANHOLE (TELEPHONE)	
MANHOLE (TV)	
MANHOLE (WATER)	
METER (GAS)	
METER (WATER)	
PEDESTAL (TELEPHONE)	
PEDESTAL (TV)	
PROPERTY PIN	
PULL BOX	
REDUCER FITTING	
SIGN OR POST (SIGN TYPE NOTED)	
SPRINKLER HEAD	
STREET LIGHT	
SURVEY MONUMENT (CITY)	
SURVEY MONUMENT (TYPE NOTED)	
TEST HOLE	
TRAFFIC PAINT MARKING	
TRAFFIC SIGNAL POLE AND MAST ARM	
UTILITY POLE	
VALVE (GAS)	
VALVE (IRRIGATION)	
VALVE (WATER)	
VEGETATION (HEDGE OR BUSH)	
VEGETATION (TREE STUMP)	
VEGETATION (TREE) (CALIPER SIZE NOTED)	
WATER HYDRANT	
WEIR	
YARD LIGHT	



REVISION Δ	DESCRIPTION	DATE	DRAWN BY HMC	DATE 2022
REVISION Δ			DESIGNED BY LMF	DATE 2022
REVISION Δ			CHECKED BY LMF	DATE 2022
REVISION Δ			APPROVED BY LMF	DATE 2022

SCALES:

NO SCALE



**PUBLIC WORKS ENGINEERING DIVISION**

PROJECT NO. F200404

**2022 SIDEWALKS FOR SAFE ROUTES TO SCHOOL**

**STANDARD ABBREVIATIONS LEGENDS AND SYMBOLS**

September 8, 2022

N:\Landproj\2022 Sidewalks for Safe Routes to School\60CAD\00DESIGN\STANDARD ABBREVIATIONS LEGENDS AND SYMBOLS.dwg - PLOTTED 9/8/2022 8:53:48 AM

**Bid Schedule: 2022 Safe Routes to School - Elm Avenue Project**

Item No.	CDOT, City Ref.	Description	Quantity	Units	Unit Price	Total Price
1	202	Tree Trimming	1.	LS		
2	202	Removal of Concrete (Includes, but not limited to, curb, gutter, sidewalk, driveway, slabs, V-pans, curb ramps, intersection corners, aprons, and landscape borders)	38.91	SY		
3	202	Removal of Asphalt Mat	169.55	SY		
4	202	Remove, Maintain, and Reset Sod (Parcel 1-4)	62.76	SY		
5	202	Removal of Fence	16.15	LF		
6	202	Removal of Gate	1.	EACH		
7	202	Removal of Ground Sign	2.	EACH		
8	208	Inlet Protection (Silt-Sack) (Includes Maintenance & Removal of Debris, & Removal of Inlet Protection)	1.	EACH		
9	208	Concrete Washout Facility	1.	EACH		
10	210	Reset Ground Sign	1.	EACH		
11	210	Reset Chain Link Fence	124.4	LF		
12	210	Reset Landscape Ground Cover (Parcel 5)	1.	LS		
13	210	Reset Sprinkler System (Parcel 1-4) (Complete in Place)	1.	LS		
14	304	Aggregate Base Course (Class 6) (6" Thick) (Under concrete)	46.45	CY		
15	304	Aggregate Base Course (Class 6) (12" Thick) (Under asphalt)	100.95	CY		
16	306	Reconditioning (6" Deep)	50.47	SY		

17	401	Hot Bituminous Pavement (Patching) (4" Thick) (Grading SX, PG 64-22) (GYR.=75)(Two 2" Lifts)	308.75	SY		
18	607	Gate (Chain Link) (6'x 10')	2.	EACH		
19	xx	Privacy Screen (6' Tall) (Green) (Parcel 5)	145.	LF		
20	608	Vertical Concrete Curb, Gutter and Sidewalk	157.84	SY		
21	608	Concrete Driveway Section (6" Thick)	71.36	SY		
22	608	Concrete Curb Ramp (8" Thick)	23.02	SY		
23	608	Detectable Warnings (Wet Set)	1.	LS		
24	620	Sanitary Facility	1.	EACH		
25	625	Construction Surveying (Includes As-Built Drawings)	1.	LS		
26	626	Mobilization	1.	LS		
27	630	Traffic Control (Complete in Place)	1.	LS		
28	630	Traffic Control Plan	1.	LS		
29	630	Flagging	40.	HOUR		
MCR		Minor Contract Revisions	---	---		\$ 15,000.00

**Bid Amount:** \$ \_\_\_\_\_

**Bid Amount:** \_\_\_\_\_ dollars

REVISION	DESCRIPTION	DATE	DRAWN BY	HMC	DATE	2022	SCALES:
REVISION			DESIGNED BY	LMF	DATE	2022	NO SCALE
REVISION			CHECKED BY	LMF	DATE	2022	
REVISION			APPROVED BY	LMF	DATE	2022	

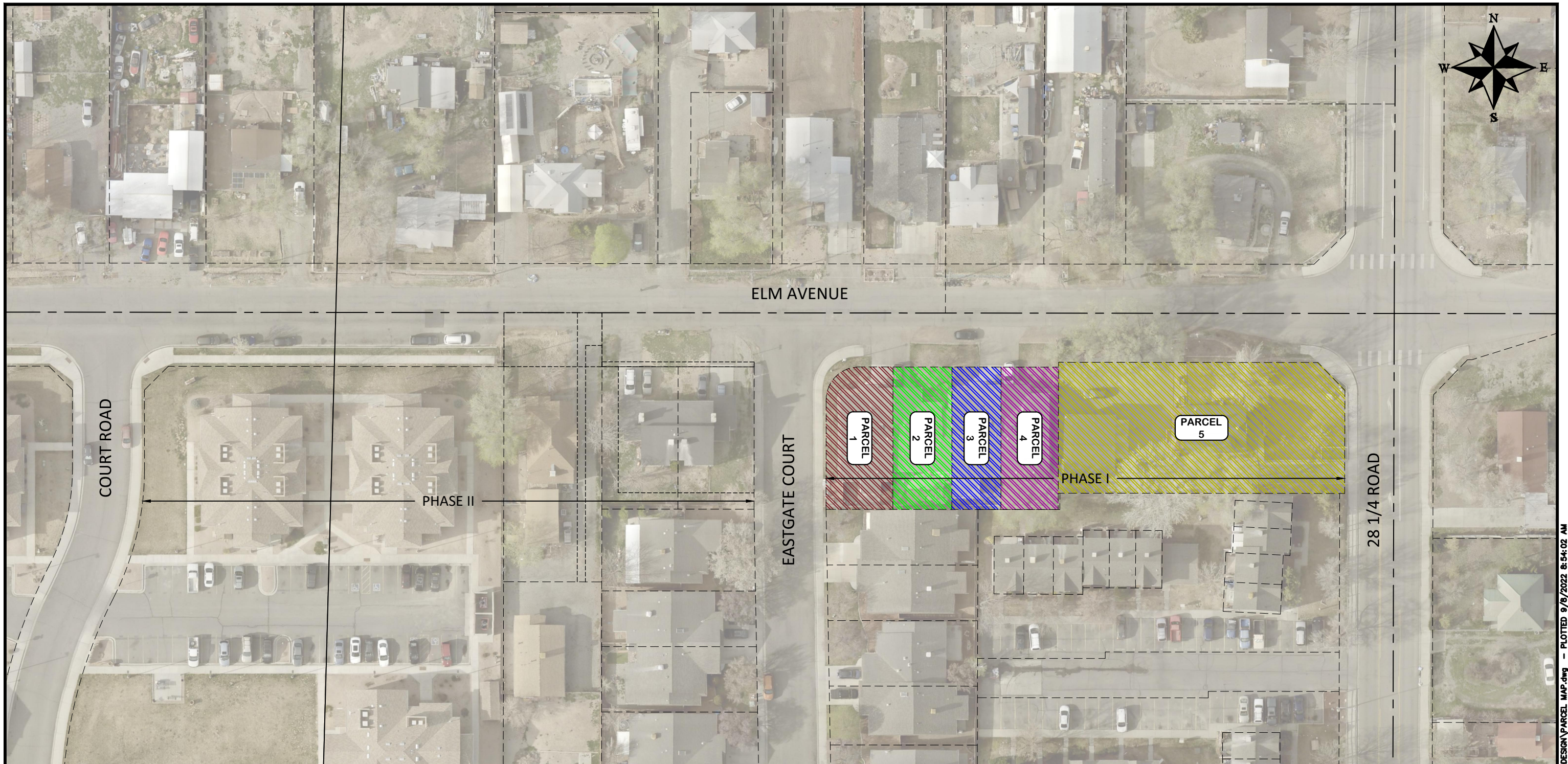


**PUBLIC WORKS  
ENGINEERING DIVISION**  
PROJECT NO. F200404

**2022 SIDEWALKS FOR SAFE ROUTES TO SCHOOL  
SUMMARY OF APPROXIMATE QUANTITIES**  
September 8, 2022

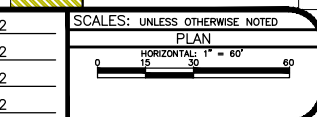
N:\Lampiro\2022 Sidewalks for Safe Routes to School\60CAD\00DESIGN\SUMMARY OF APPROXIMATE QUANTITIES.dwg - PLOTTED 9/8/2022 9:06:00 AM





	Parcel Number	Location Address	Owner	Mailing Address
	2943-073-22-007	2821 ELM AVE GRAND JUNCTION, CO 81501	SMITH FAMILY REVOCABLE TRUST DATED OCTOBER 14 1994	21477 VACA DR ECKERT, CO 81418
	2943-073-22-008	2821 1/2 ELM AVE GRAND JUNCTION, CO 81501	MARG HEDDA A MARG KLAUS OSTRICK CHRISTINA M MARG ROBERT M	
	2943-073-22-009	2823 ELM AVE GRAND JUNCTION, CO 81501	DAY LOUISE DAY ERIC MICHAEL MCALEESE GRANTEE BENEFICIARY	
	2943-073-22-010	2823 1/2 ELM AVE GRAND JUNCTION, CO 81501	LAUDERBACH AMANDA	
	2943-073-00-084	525 28 1/4 RD GRAND JUNCTION, CO 81501	CRAIG KATELYN M CRAIG MARK ANDREW	937 GREENBRIAR TRCE NASHVILLE, TN 37214-4824

REVISION	DESCRIPTION	DATE	DRAWN BY	HMC	DATE	2022
REVISION			DESIGNED BY	LMF	DATE	2022
REVISION			CHECKED BY	LMF	DATE	2022
REVISION			APPROVED BY	LMF	DATE	2022

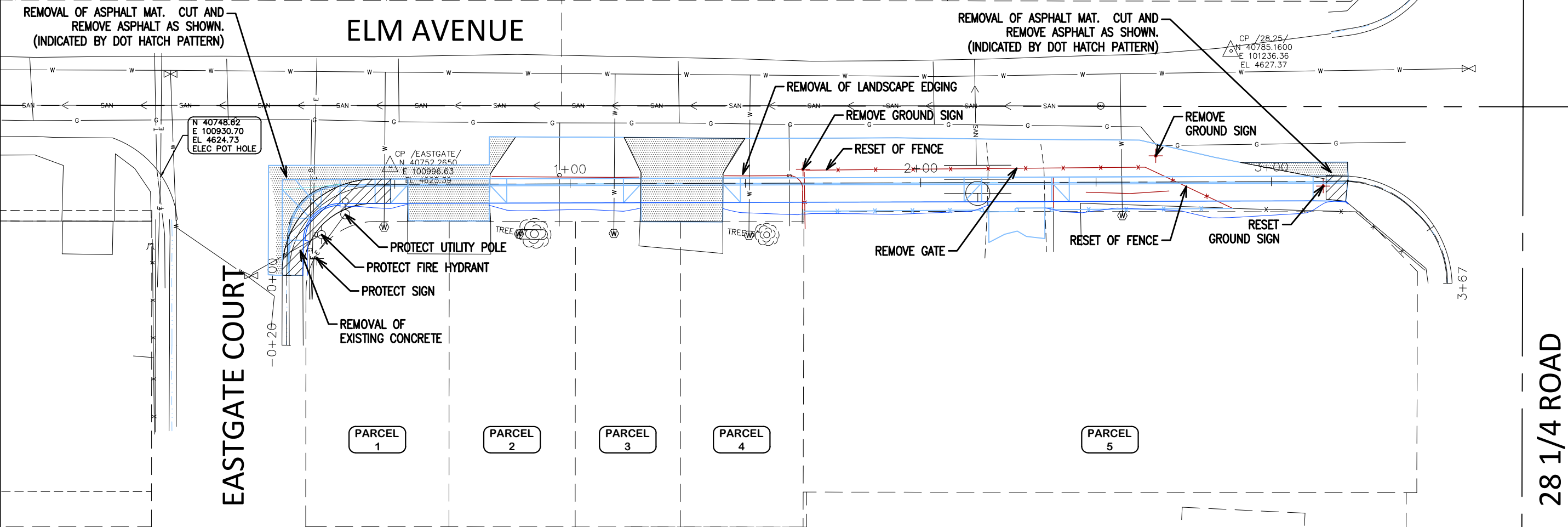
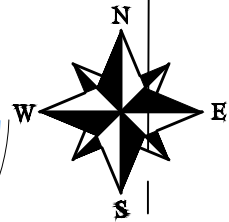


**PUBLIC WORKS  
ENGINEERING DIVISION**  
PROJECT NO. F200404

**2022 SIDEWALKS FOR SAFE ROUTES TO SCHOOL  
PARCEL MAP**  
September 8, 2022

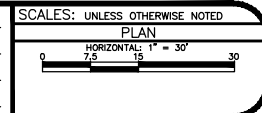


<b>1</b> 2943-073-22-007 2821 ELM AVE GRAND JUNCTION, CO 81501 SMITH FAMILY REVOCABLE TRUST DATED OCTOBER 14 1994 21477 VACA DR ECKERT, CO 81418	<b>3</b> 2943-073-22-009 2823 ELM AVE GRAND JUNCTION, CO 81501 DAY LOUISE DAY ERIC MICHAEL MCALEESE GRANTEE BENEFICIARY c/o PATRICIA LOUISE DAY	<b>5</b> 2943-073-00-084 525 28 1/4 RD GRAND JUNCTION, CO 81501 CRAIG KATELYN M CRAIG MARK ANDREW 937 GREENBRIAR TRCE NASHVILLE, TN 37214-4824
<b>2</b> 2943-073-22-008 2821 1/2 ELM AVE GRAND JUNCTION, CO 81501 MARG HEDDA A MARG KLAUS OSTRICK CHRISTINA M MARG ROBERT M	<b>4</b> 2943-073-22-010 2823 1/2 ELM AVE GRAND JUNCTION, CO 81501 LAUDERBACH AMANDA	



REVISION	DESCRIPTION	DATE
REVISION		
REVISION		
REVISION		

DRAWN BY	HMC	DATE	2022
DESIGNED BY	LMF	DATE	2022
CHECKED BY	LMF	DATE	2022
APPROVED BY	LMF	DATE	2022

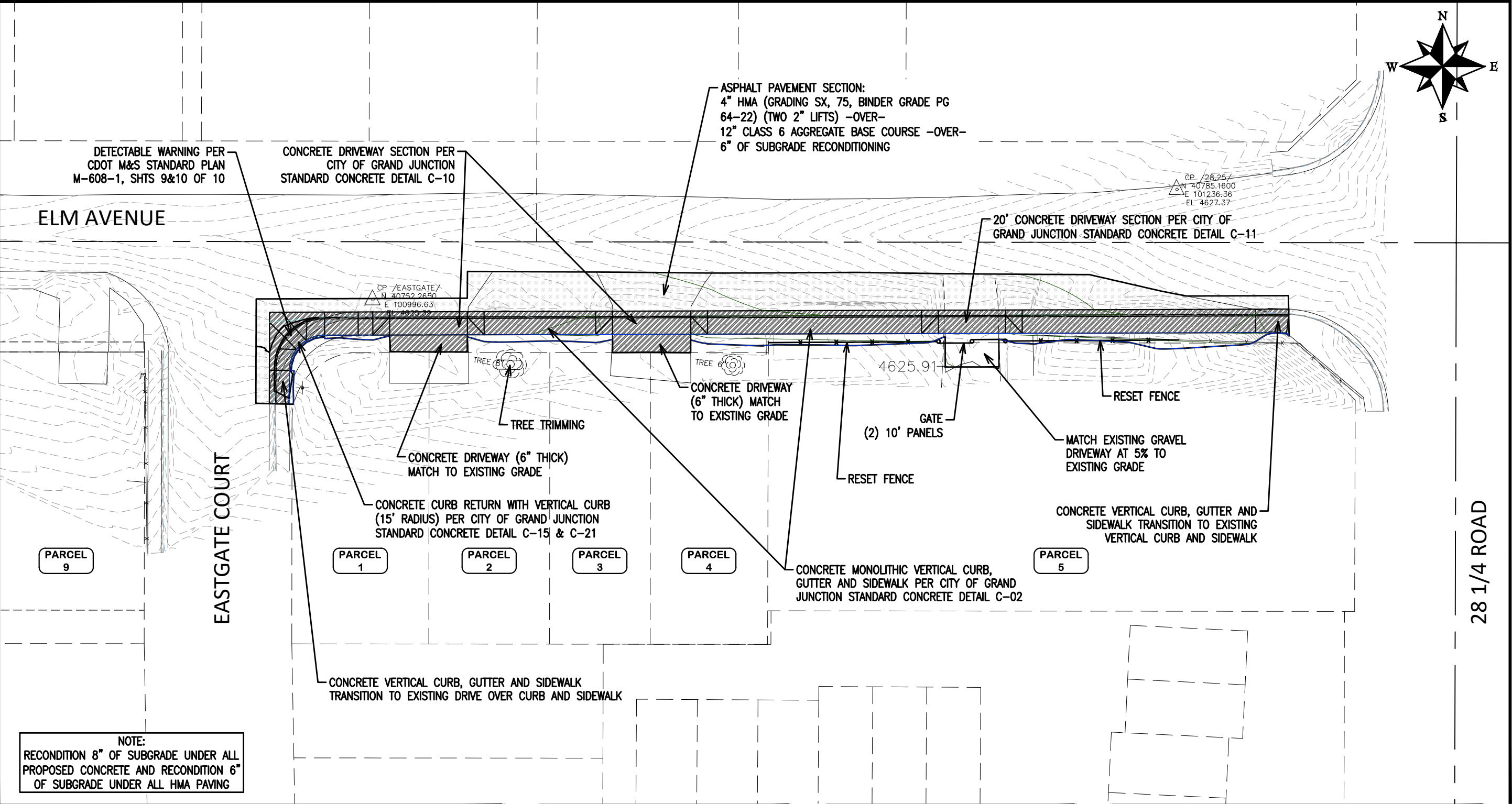
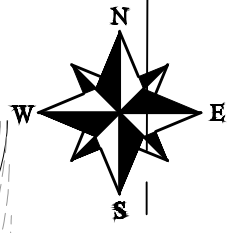


**PUBLIC WORKS  
ENGINEERING DIVISION**  
PROJECT NO. F200404

**2022 SIDEWALKS FOR SAFE ROUTES TO SCHOOL  
REMOVAL PLAN**  
September 8, 2022

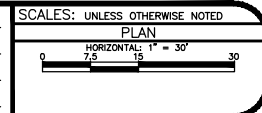
N:\Landscape\2022 Sidewalks for Safe Routes to School\60CAD\00DESIGN\REMOVAL PLAN.dwg - PLOTTED 9/8/2022 8:54:12 AM

<p>1</p> <p>2943-073-22-007 2821 ELM AVE GRAND JUNCTION, CO 81501 SMITH FAMILY REVOCABLE TRUST DATED OCTOBER 14 1994 21477 VACA DR ECKERT, CO 81418</p>	<p>3</p> <p>2943-073-22-009 2823 ELM AVE GRAND JUNCTION, CO 81501 DAY LOUISE DAY ERIC MICHAEL MCALEESE GRANTEE BENEFICIARY c/o PATRICIA LOUISE DAY</p>	<p>5</p> <p>2943-073-00-084 525 28 1/4 RD GRAND JUNCTION, CO 81501 CRAIG KATELYN M CRAIG MARK ANDREW 937 GREENBRIAR TRCE NASHVILLE, TN 37214-4824</p>
<p>2</p> <p>2943-073-22-008 2821 1/2 ELM AVE GRAND JUNCTION, CO 81501 MARG HEDDA A MARG KLAUS OSTRICK CHRISTINA M MARG ROBERT M</p>	<p>4</p> <p>2943-073-22-010 2823 1/2 ELM AVE GRAND JUNCTION, CO 81501 LAUDERBACH AMANDA</p>	



NOTE:  
RECONDITION 8" OF SUBGRADE UNDER ALL PROPOSED CONCRETE AND RECONDITION 6" OF SUBGRADE UNDER ALL HMA PAVING

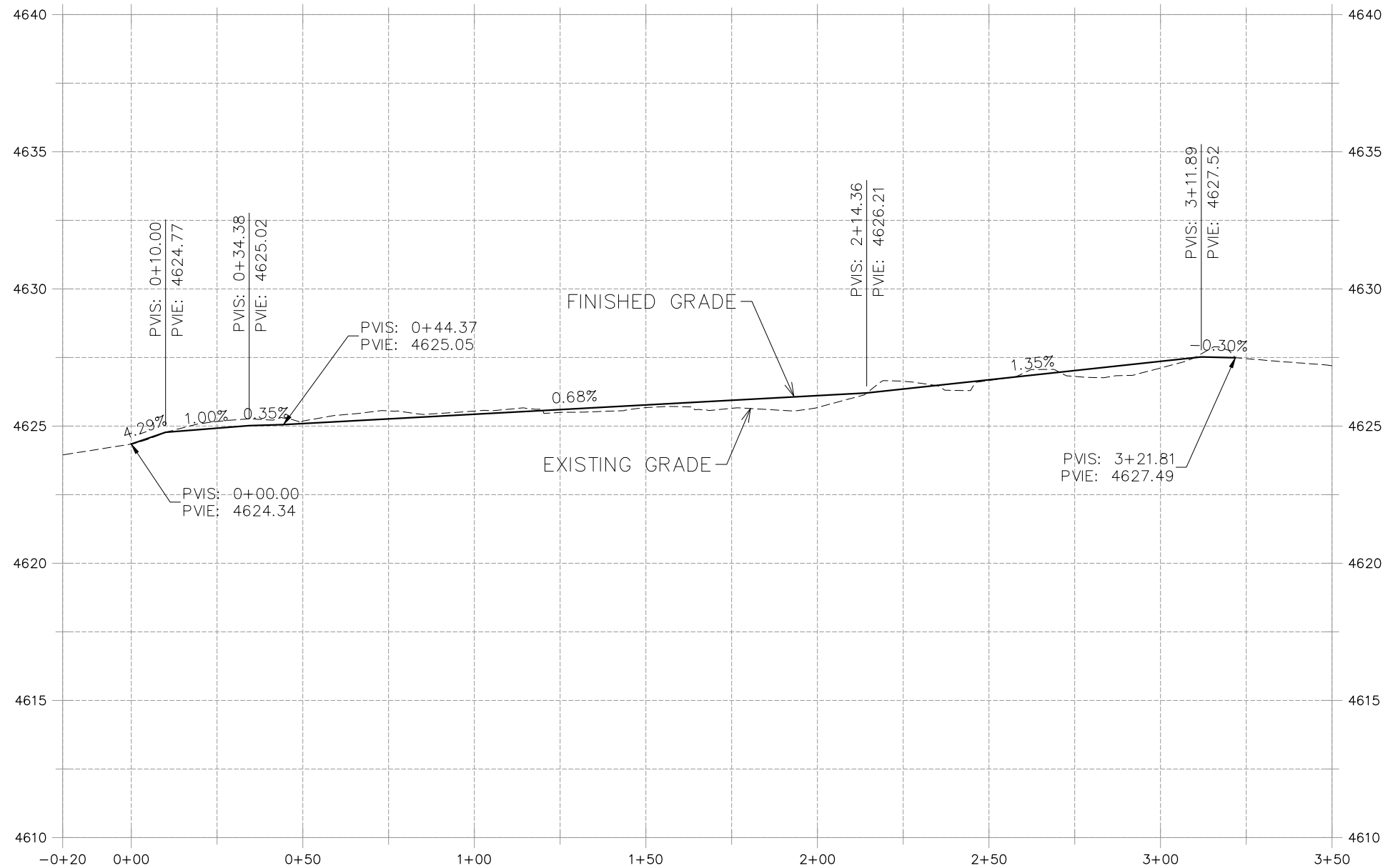
REVISION	DESCRIPTION	DATE	DRAWN BY	HMC	DATE	2022
REVISION			DESIGNED BY	LMF	DATE	2022
REVISION			CHECKED BY	LMF	DATE	2022
REVISION			APPROVED BY	LMF	DATE	2022



PUBLIC WORKS  
ENGINEERING DIVISION  
PROJECT NO. F200404

2022 SIDEWALKS FOR SAFE ROUTES TO SCHOOL  
IMPROVEMENT PLAN  
September 8, 2022

N:\landpro\2022 Sidewalks for Safe Routes to School\60CAD\00DESIGN\IMPROVEMENT PLAN.DWG - PLOTTED 9/8/2022 8:54:24 AM



FLOWLINE - EASTGATE COURT TO EXISTING 28 1/4 RD

REVISION	DESCRIPTION	DATE
REVISION		
REVISION		
REVISION		

DRAWN BY	HMC	DATE	2022
DESIGNED BY	LMF	DATE	2022
CHECKED BY	LMF	DATE	2022
APPROVED BY	LMF	DATE	2022

SCALES: UNLESS OTHERWISE NOTED

PLAN & PROFILE  
 HORIZONTAL: 1" = 40'  
 VERTICAL: 1" = 5'

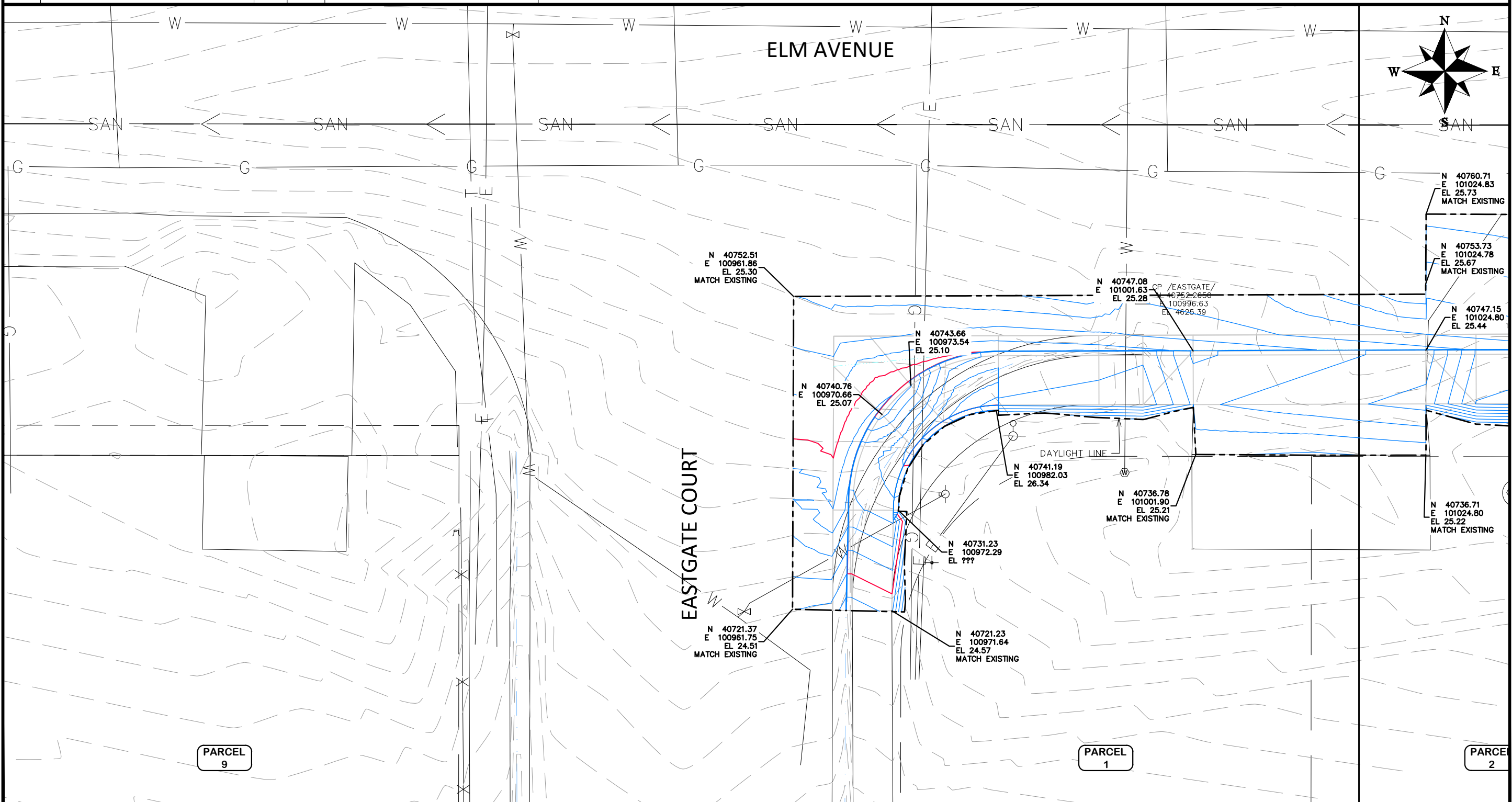


PUBLIC WORKS  
 ENGINEERING DIVISION  
 PROJECT NO. F200404

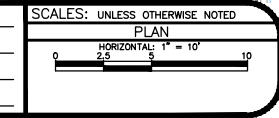
2022 SIDEWALKS FOR SAFE ROUTES TO SCHOOL  
 FL PROFILE  
 September 8, 2022

N:\Lamp\proj\2022 Sidewalks for Safe Routes to School\60CAD\00DESIGN\ROAD PROFILE.dwg - PLOTTED 9/8/2022 8:54:31 AM

<b>1</b> 2943-073-22-007 2821 ELM AVE GRAND JUNCTION, CO 81501 SMITH FAMILY REVOCABLE TRUST DATED OCTOBER 14 1994 21477 VACA DR ECKERT, CO 81418	<b>3</b> 2943-073-22-009 2823 ELM AVE GRAND JUNCTION, CO 81501 DAY LOUISE DAY ERIC MICHAEL MCALEESE GRANTEE BENEFICIARY c/o PATRICIA LOUISE DAY	<b>5</b> 2943-073-00-084 525 28 1/4 RD GRAND JUNCTION, CO 81501 CRAIG KATELYN M CRAIG MARK ANDREW 937 GREENBRIAR TRCE NASHVILLE, TN 37214-4824
<b>2</b> 2943-073-22-008 2821 1/2 ELM AVE GRAND JUNCTION, CO 81501 MARG HEDDA A MARG KLAUS OSTRICK CHRISTINA M MARG ROBERT M	<b>4</b> 2943-073-22-010 2823 1/2 ELM AVE GRAND JUNCTION, CO 81501 LAUDERBACH AMANDA	



REVISION	DESCRIPTION	DATE	DRAWN BY	HMC	DATE	2022
REVISION			DESIGNED BY	LMF	DATE	2022
REVISION			CHECKED BY	LMF	DATE	2022
REVISION			APPROVED BY	LMF	DATE	2022



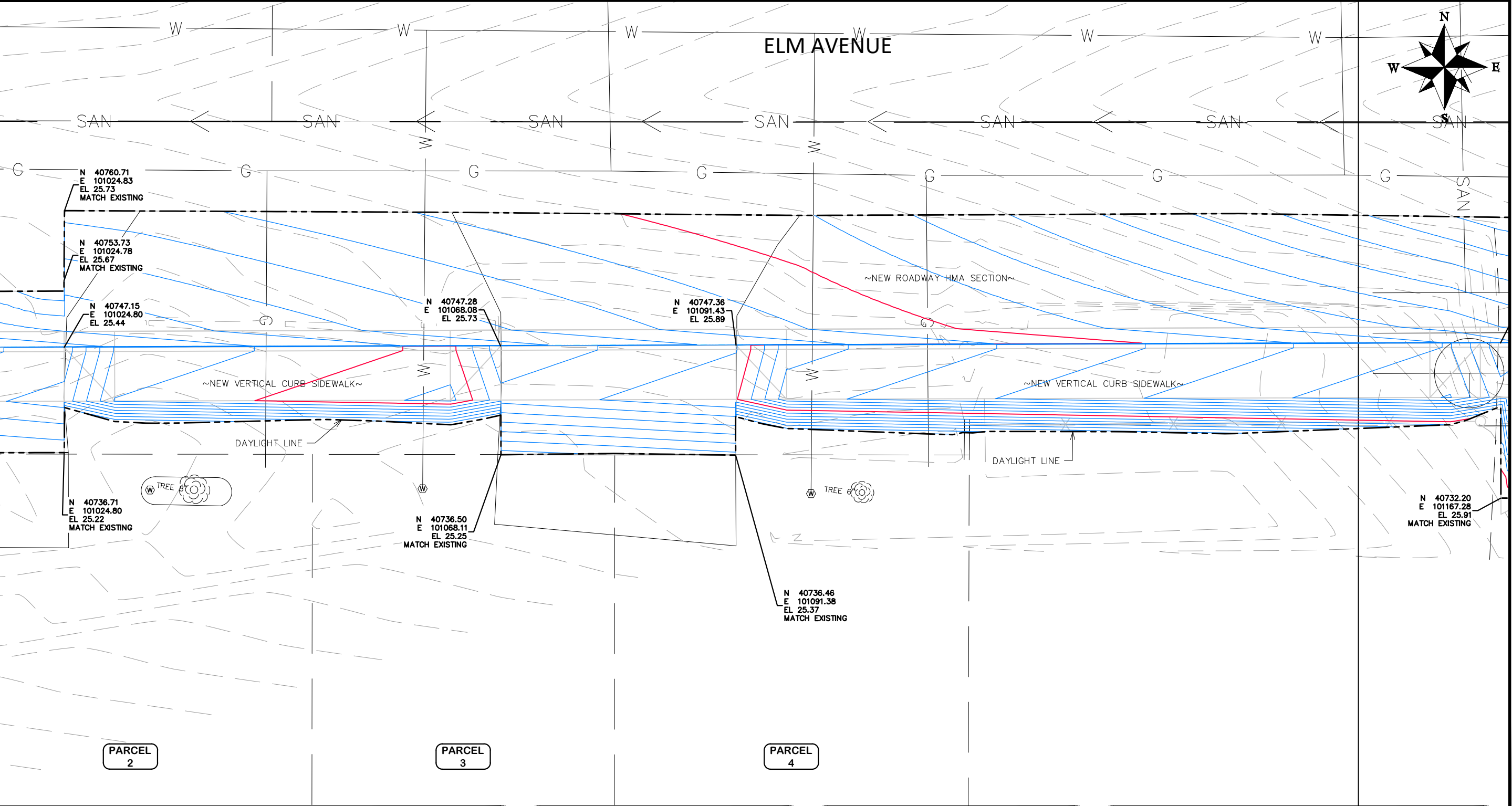
**PUBLIC WORKS**  
**ENGINEERING DIVISION**  
 PROJECT NO. F200404

**2022 SIDEWALKS FOR SAFE ROUTES TO SCHOOL**  
**STAKING PLAN - 1**  
 September 8, 2022

N:\landproj\2022 Sidewalks for Safe Routes to School\60CAD\00DESIGN\STAKING PLAN.dwg - PLOTTED 9/8/2022 8:54:44 AM

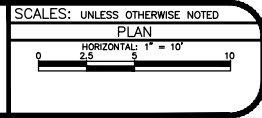


<b>1</b> 2943-073-22-007 2821 ELM AVE GRAND JUNCTION, CO 81501 SMITH FAMILY REVOCABLE TRUST DATED OCTOBER 14 1994 21477 VACA DR ECKERT, CO 81418	<b>3</b> 2943-073-22-009 2823 ELM AVE GRAND JUNCTION, CO 81501 DAY LOUISE DAY ERIC MICHAEL MCALEESE GRANTEE BENEFICIARY c/o PATRICIA LOUISE DAY	<b>5</b> 2943-073-00-084 525 28 1/4 RD GRAND JUNCTION, CO 81501 CRAIG KATELYN M CRAIG MARK ANDREW 937 GREENBRIAR TRCE NASHVILLE, TN 37214-4824
<b>2</b> 2943-073-22-008 2821 1/2 ELM AVE GRAND JUNCTION, CO 81501 MARG HEDDA A MARG KLAUS OSTRICK CHRISTINA M MARG ROBERT M	<b>4</b> 2943-073-22-010 2823 1/2 ELM AVE GRAND JUNCTION, CO 81501 LAUDERBACH AMANDA	



REVISION	DESCRIPTION	DATE
REVISION		
REVISION		
REVISION		

DRAWN BY	HMC	DATE	2022
DESIGNED BY	LMF	DATE	2022
CHECKED BY	LMF	DATE	2022
APPROVED BY	LMF	DATE	2022

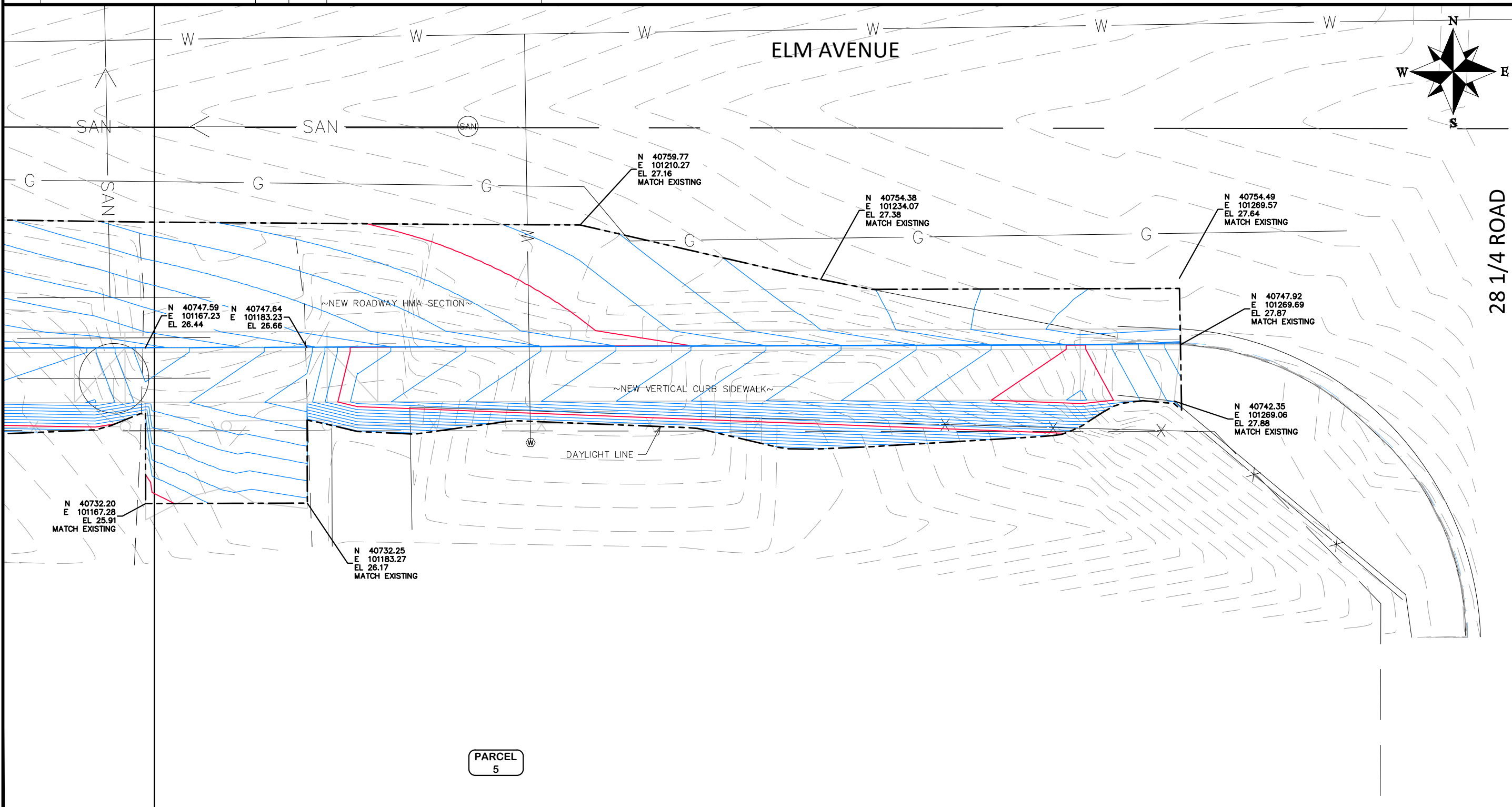


**PUBLIC WORKS**  
**ENGINEERING DIVISION**  
 PROJECT NO. F200404

**2022 SIDEWALKS FOR SAFE ROUTES TO SCHOOL**  
**STAKING PLAN - 2**  
 September 8, 2022

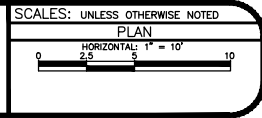
N:\landproj\2022 Sidewalks for Safe Routes to School\60CAD\00DESIGN\STAKING PLAN.dwg - PLOTTED 9/8/2022 8:54:49 AM

<p>1</p> <p>2943-073-22-007 2821 ELM AVE GRAND JUNCTION, CO 81501 SMITH FAMILY REVOCABLE TRUST DATED OCTOBER 14 1994 21477 VACA DR ECKERT, CO 81418</p>	<p>3</p> <p>2943-073-22-009 2823 ELM AVE GRAND JUNCTION, CO 81501 DAY LOUISE DAY ERIC MICHAEL MCALEESE GRANTEE BENEFICIARY c/o PATRICIA LOUISE DAY</p>	<p>5</p> <p>2943-073-00-084 525 28 1/4 RD GRAND JUNCTION, CO 81501 CRAIG KATELYN M CRAIG MARK ANDREW 937 GREENBRIAR TRCE NASHVILLE, TN 37214-4824</p>
<p>2</p> <p>2943-073-22-008 2821 1/2 ELM AVE GRAND JUNCTION, CO 81501 MARG HEDDA A MARG KLAUS OSTRICK CHRISTINA M MARG ROBERT M</p>	<p>4</p> <p>2943-073-22-010 2823 1/2 ELM AVE GRAND JUNCTION, CO 81501 LAUDERBACH AMANDA</p>	



PARCEL  
5

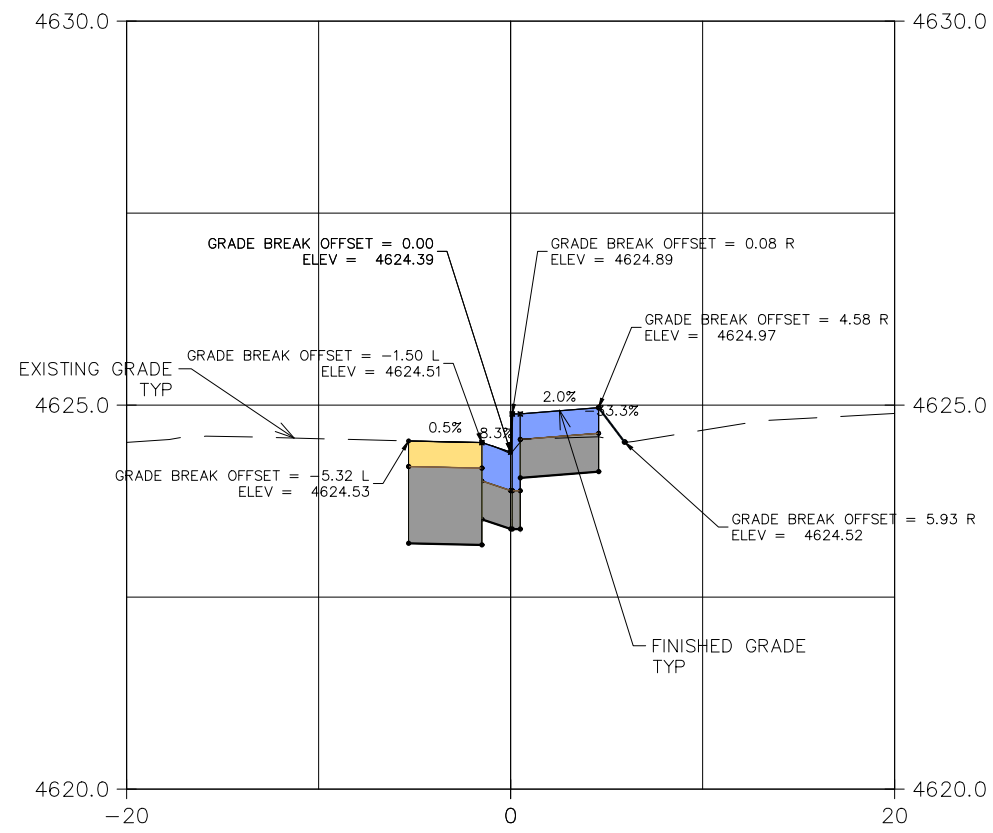
REVISION	DESCRIPTION	DATE	DRAWN BY	HMC	DATE	2022
REVISION			DESIGNED BY	LMF	DATE	2022
REVISION			CHECKED BY	LMF	DATE	2022
REVISION			APPROVED BY	LMF	DATE	2022



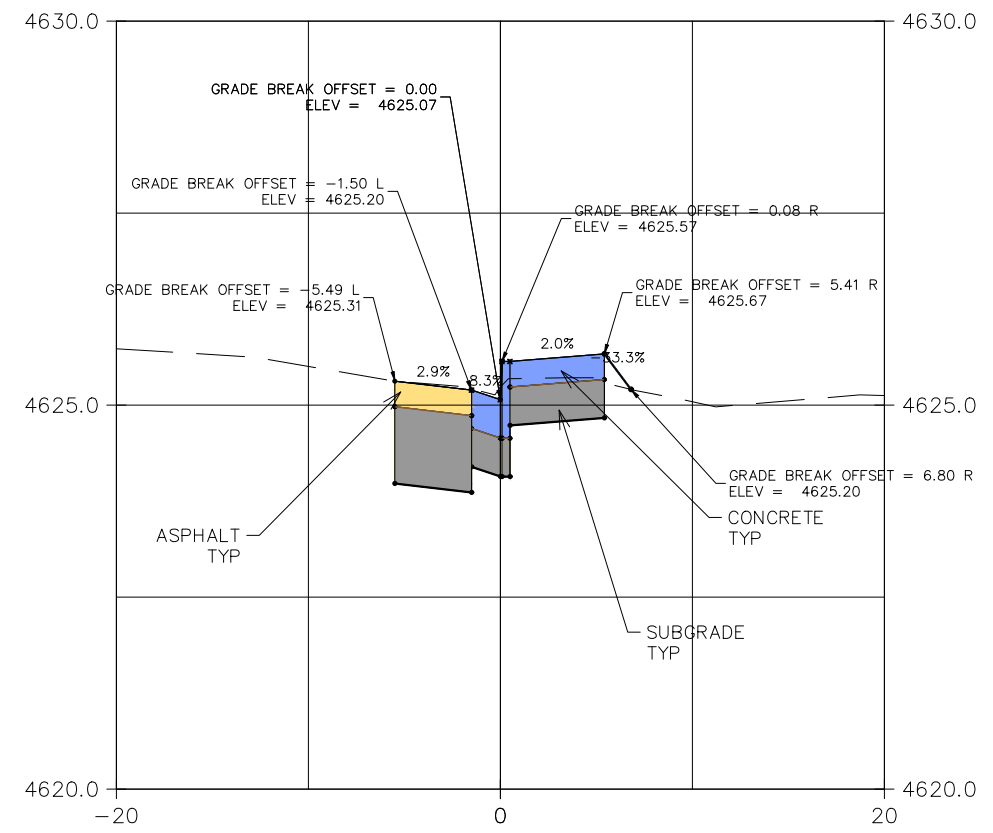
PUBLIC WORKS  
ENGINEERING DIVISION  
PROJECT NO. F200404

2022 SIDEWALKS FOR SAFE ROUTES TO SCHOOL  
STAKING PLAN - 3  
September 8, 2022

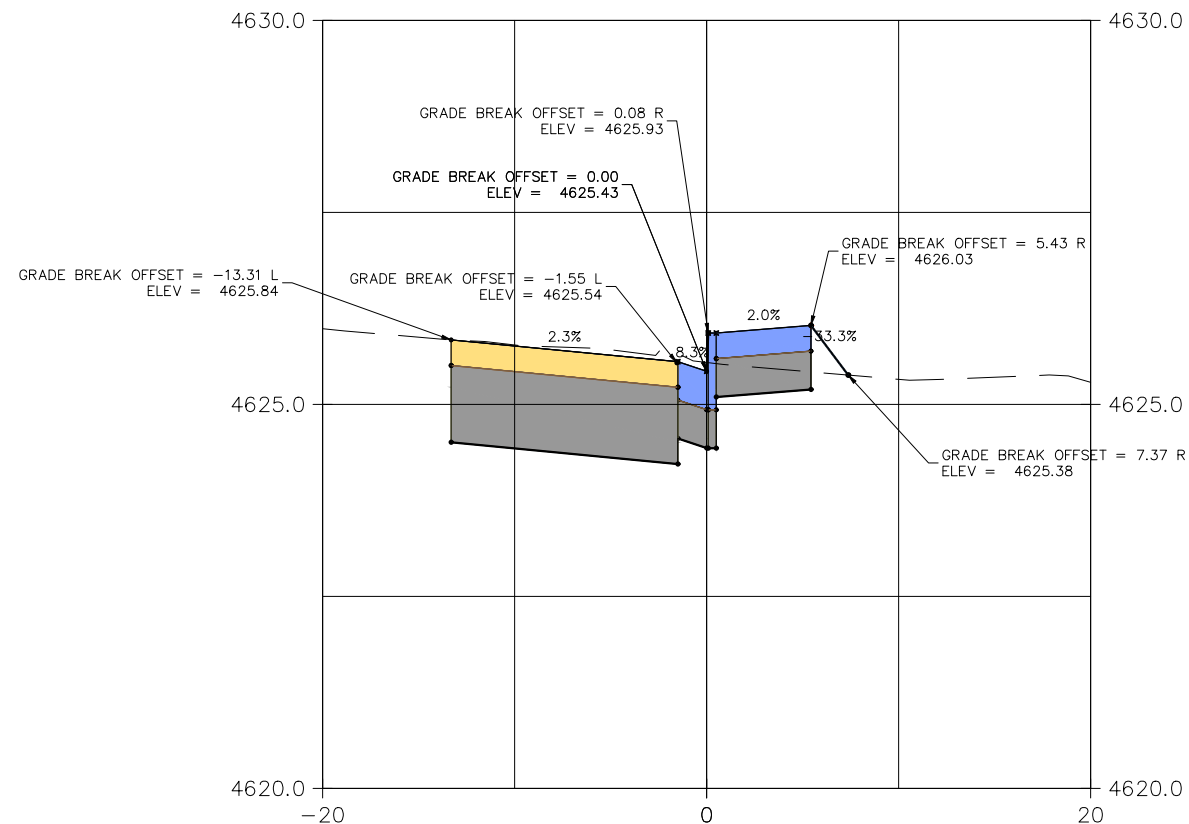
N:\Lundproj\2022 Sidewalks for Safe Routes to School\GOCAD\GODESIGN\STAKING PLAN.dwg - PLOTTED 9/8/2022 8:54:54 AM



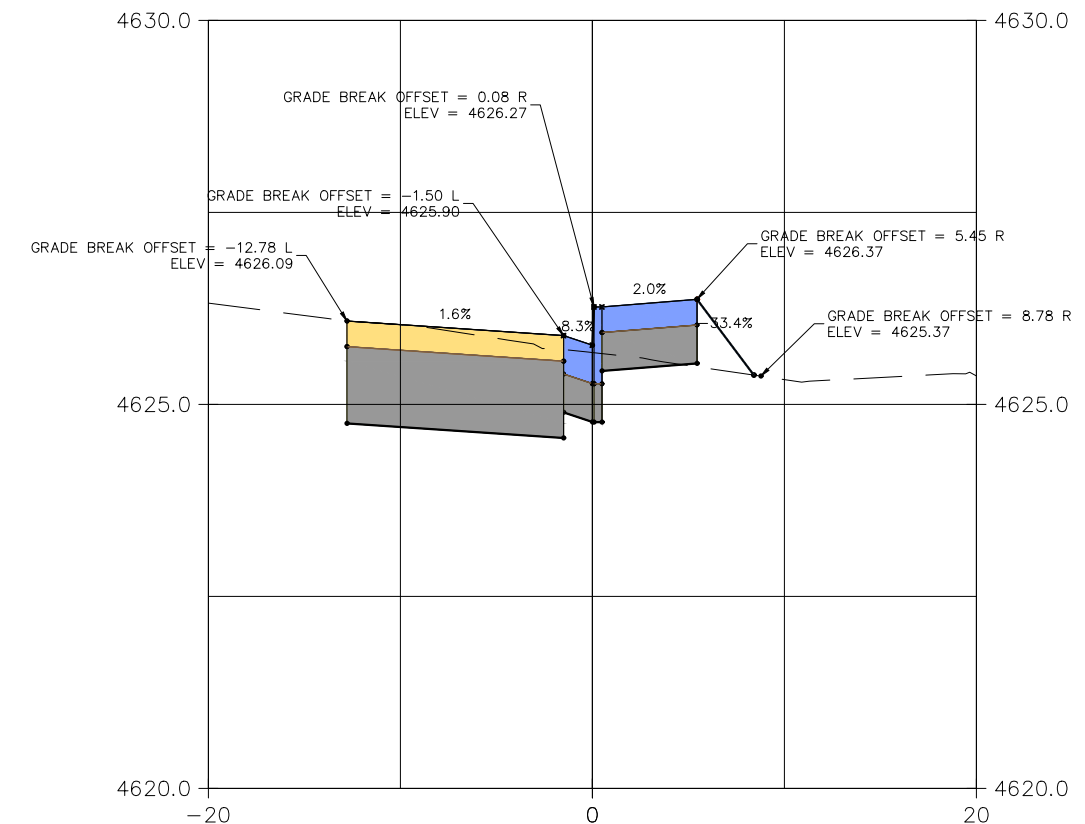
STA 0+01.00



STA 0+47.00



STA 1+00.00



STA 1+50.00

FLOWLINE - EASTGATE COURT TO EXISTING 28 1/4 RD

REVISION	DESCRIPTION	DATE
REVISION		
REVISION		
REVISION		

DRAWN BY	HMC	DATE	2022
DESIGNED BY	LMF	DATE	2022
CHECKED BY	LMF	DATE	2022
APPROVED BY	LMF	DATE	2022

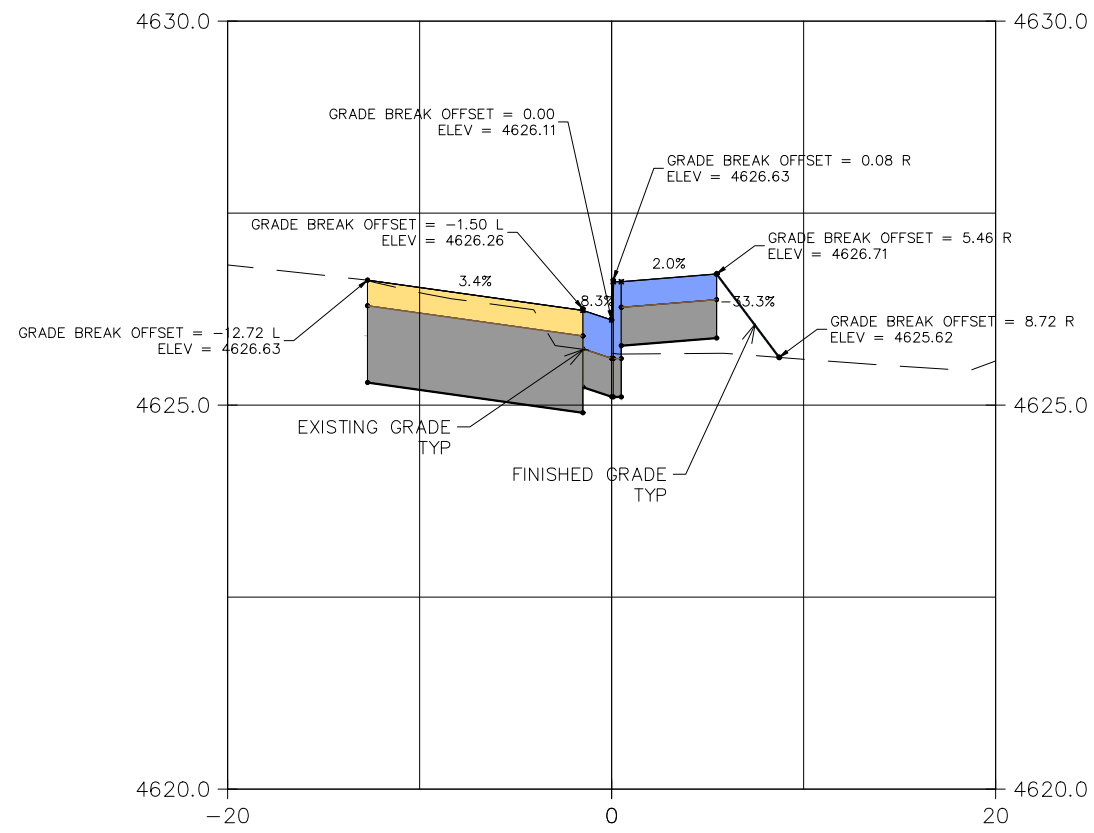
SCALES: UNLESS OTHERWISE NOTED	
HORIZONTAL	1" = 10'
VERTICAL	1" = 1.25'



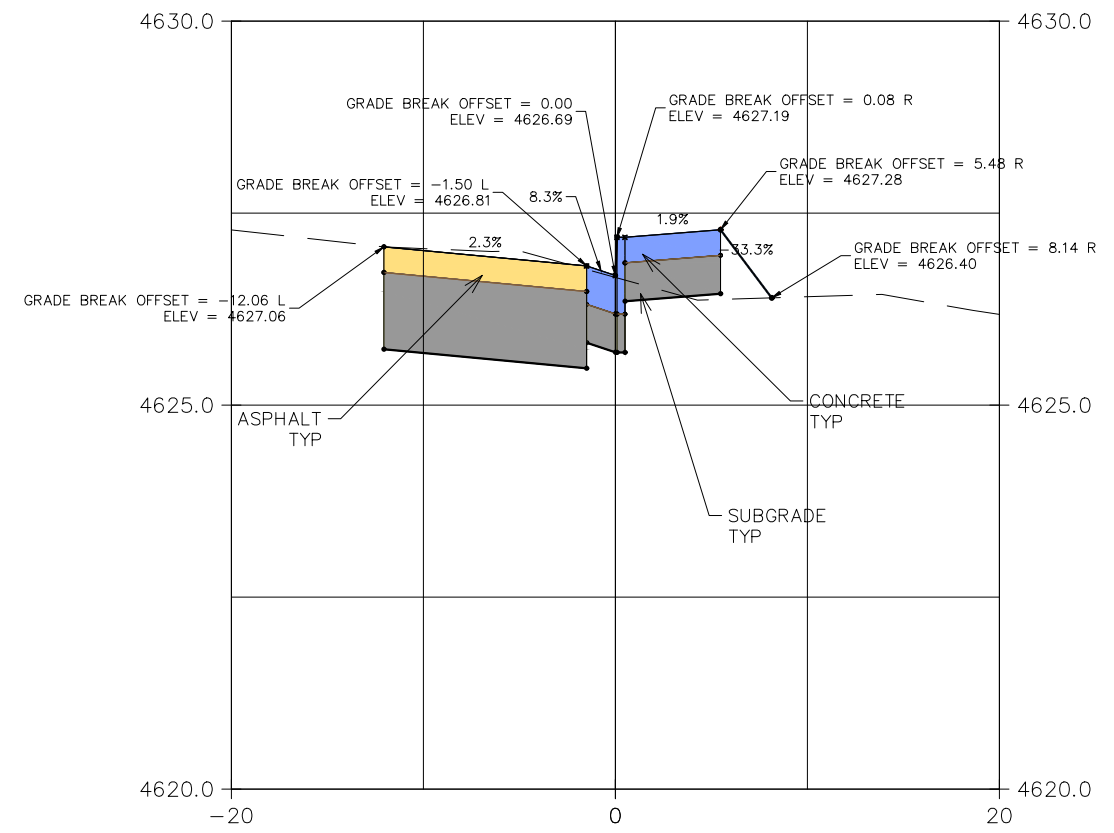
PUBLIC WORKS  
ENGINEERING DIVISION  
PROJECT NO. F200404

2022 SIDEWALKS FOR SAFE ROUTES TO SCHOOL  
SECTION VIEWS - 1  
September 8, 2022

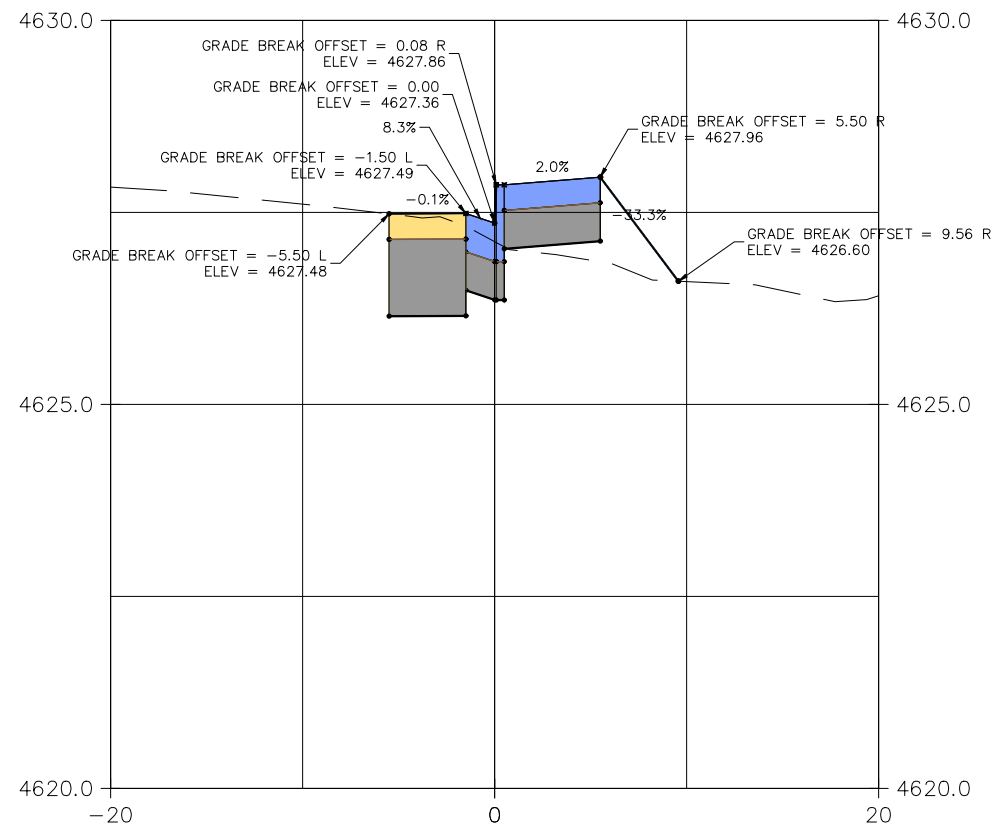




STA 2+00.00



STA 2+50.00



STA 3+00.00

FLOWLINE - EASTGATE COURT TO EXISTING 28 1/4 RD

REVISION	DESCRIPTION	DATE
REVISION		
REVISION		
REVISION		

DRAWN BY	HMC	DATE	2022
DESIGNED BY	LMF	DATE	2022
CHECKED BY	LMF	DATE	2022
APPROVED BY	LMF	DATE	2022

SCALES: UNLESS OTHERWISE NOTED	
PLAN & PROFILE	
HORIZONTAL: 1" = 10'	
VERTICAL: 1" = 1.25'	



PUBLIC WORKS  
ENGINEERING DIVISION  
PROJECT NO. F200404

2022 SIDEWALKS FOR SAFE ROUTES TO SCHOOL  
SECTION VIEWS - 2  
September 8, 2022