



Purchasing Division

ADDENDUM NO. 2

DATE: November 9, 2022
FROM: City of Grand Junction Purchasing Division
TO: All Offerors
RE: IFB-5145-22-DD 2022 Sewer Replacement UnawEEP Avenue Project

Offerors responding to the above referenced solicitation are hereby instructed that the requirements have been clarified, modified, superseded, and supplemented as to this date as hereinafter described.

Please make note of the following clarifications:

1. **Update Section 3.2 of the Solicitation:**

PROJECT DESCRIPTION: The Project primarily includes replacement of sanitary sewer pipe at various locations that will include both open trench and trenchless construction methods. The trenchless pipe replacements will include pipe bursting approximately **9,433** linear feet (LF) of 8" diameter sewer main, replacement of 35 manholes and reconnection of approximately 165 active sewer services along various streets crossing UnawEEP Avenue between Pinion Street and 27 3/8 Road. One section of Holly Lane will include **350'** open trench of Ø8" Sanitary Sewer Main in conjunction with a new 12-inch diameter RCP storm drainpipe on the south side of UnawEEP Avenue. This project also includes removal and replacement of approximately 619 linear feet of 8" diameter sewer pipe parallel to the Grand Valley Canal from Lakeside Court to Horizon Drive. The utility work included in this project will require traffic control, bypass pumping, and restoration of disturbed areas with approximately 9,733 square yards of asphalt patching.

2. Incorporate Revision 1 of Bid Schedule: 2022 Sewer Replacements – UnawEEP Ave. (Attached)

<http://trimview.gjcity.org/?=SOLDOC/25023>

3. **Question:** Item #5 Sewer SDR35- Bid Schedule has 609 ft, plans show 982 ft

Answer: The area under storm sewer in Holly was corrected and added to the 958' length of Ø8" SDR 35 PVC.

4. **Question:** Item #13 8X6 (full body wye) service – Bid Schedule has 3, plans have 1.

Answer: This line item has been deleted. Manhole at STA 6+51.03 will be moved to STA 6+84 if Ø6" sewer service is verified to be live.

5. **Question:** Item #20 Fernco – Bid Schedule has 3. Please clarify this item. There are a lot of Fernco's on this project so not sure what this is supposed to be.

Answer: This line item is deleted. It was for connections to manhole replacements. Put price of coupler connections in the manhole replacement cost Line Item.

6. **Question:** Construction note for the 4" service has to include "end-of-service-cap". Please clarify. Isn't the Contractor connecting to each existing service and not capping?
Answer: Line Item #3 is corrected. "End-of-Service-Cap" is corrected to be "Connection to Active Sewer Service".
7. **Question:** Would the City consider adding pay items for traffic plates to provide temporary access on dead end streets during off hours of construction?
Answer: Traffic control plans will be discussed once the contract has been awarded and while access for all the residents is extremely important, this will be up to the Contractor to price in the Lump Sum of Traffic Control line item.
8. **Question:** The allowed closures may require flaggers during certain hours of operation. Can the City provide a pay item for flagging hours separate from the lump sum Traffic Control item?
Answer: Traffic control plans will be discussed once the contract has been awarded and while access for all the residents is extremely important, this will be up to the Contractor to price in the Lump Sum of Traffic Control line item.
9. **Question:** Does the City have a dewatering location identified for the Lakeside Sewer?
Answer: The City has coordinated with the Lakeside HOA to drain the irrigation pond (Lake Lenore) to assist in mitigating the amount of dewatering needed. Any dewatering can be discharged to Storm Drain (and associated downstream channel near Station 8+11 as long as the appropriate dewatering permits are obtained by the Contractor. Permission was also granted to discharge into the Grand Valley Irrigation Canal.
10. **Question:** Does the City have any flow data that can be used for purposes of preparing bypass pumping plans?
Answer: The 12" line in Unawep Avenue has been observed to flow at approximately 1/3 full during average flow conditions. The Lakeside Sewer has been observed to flow at approximately 1/3 full during average flow conditions. The City does not have peak flow data in these areas.
11. **Question:** Is the City Forestry Department available to assist in trimming trees along the ROW if necessary, or does the Contractor need to include this in their bid?
Answer: Licensed arborist must trim trees. Assume City Arborist is not available.
12. **Question:** It does not appear that there is a pay item for storm drain manholes on Holly Lane.
Answer: Line item for manholes has been separated to be Storm Sewer Manholes and Sanitary Sewer Manholes. See updated Bid Item Sheet.
13. **Question:** Does the pay item for pipe include import backfill material needed for open trench section on Holly Lane?
Answer: Material for backfill of Storm Sewer is to be included with Sanitary Sewer quantity.
14. **Question:** Please clarify how the City prefers to connect 6" service tap at STA. 6+84.90 to Lakeside Sewer if active?
Answer: Upon verification of an active Ø6" service line, the Manhole downstream will be relocated to meet this intersection. If Ø6" line is found to be abandoned, then Manhole at STA 6+51 remains at the location as in drawings and Ø6" line is to be abandoned.

15. **Question:** The proposed alignment of the Lakeside sewer is not located entirely within the 30-foot easement shown on the plan sheets. Please clarify if Contractor will be required to stay within the existing easement.

Answer: The City has secured additional easements from the Grand Valley Irrigation Company that are reflected by the dashed lines on Sheet 55 of the Construction Drawings and shown on the Exhibit B included with this addendum. <http://trimview.gjcity.org/?=SOLDOC/25022>

16. **Question:** Please clarify which product specification intended for Manhole Interior Corrosion Protection and which manholes are included in this pay item.

Answer: Manholes that are for Sanitary Sewer will require interior epoxy coating per 102.11 using Sherwin Williams Cor-Cote SC, Tnemec Perma-Glase Series 435 or another approved equal. Manholes which are for Storm Sewer (Holly Lane) do not coat. Only coat Sanitary Sewer Manholes in Unawep Avenue and Drop Manholes. Many manholes are having the epoxy fail prematurely due to lack of concrete preparation before application of epoxy. It is extremely important that a thorough prep job is performed before applying the product.

Other Items

1. ADS HP Storm Dual Wall Pipe will be an acceptable alternative for 12" Gravity Storm Sewer (RCP)
2. Allowable staging areas: Contractor is able to stage within ROW as shown on approved MHT's. City has stockpile areas at Cemetery off 26 ¼ Road available for use. Any other staging areas need to be secured by Contractor.
3. Protecting Power Poles: City has added a pay item for temporary support of utility poles that may be required adjacent to excavation areas.
4. Geotech Information: The City has not performed geotechnical borings specific to the project sewer lines.
 - Lakeside Sewer: Saturated soils heavily influenced by canal and irrigation pond. City has coordinated with Lakeside HOA to drain pond.
 - Unawep Area: Based on previous work in this area, soils are classified as silty soils (A4) with groundwater encountered at depths between 8 to 10 feet.

The original solicitation for the project noted above is amended as noted.

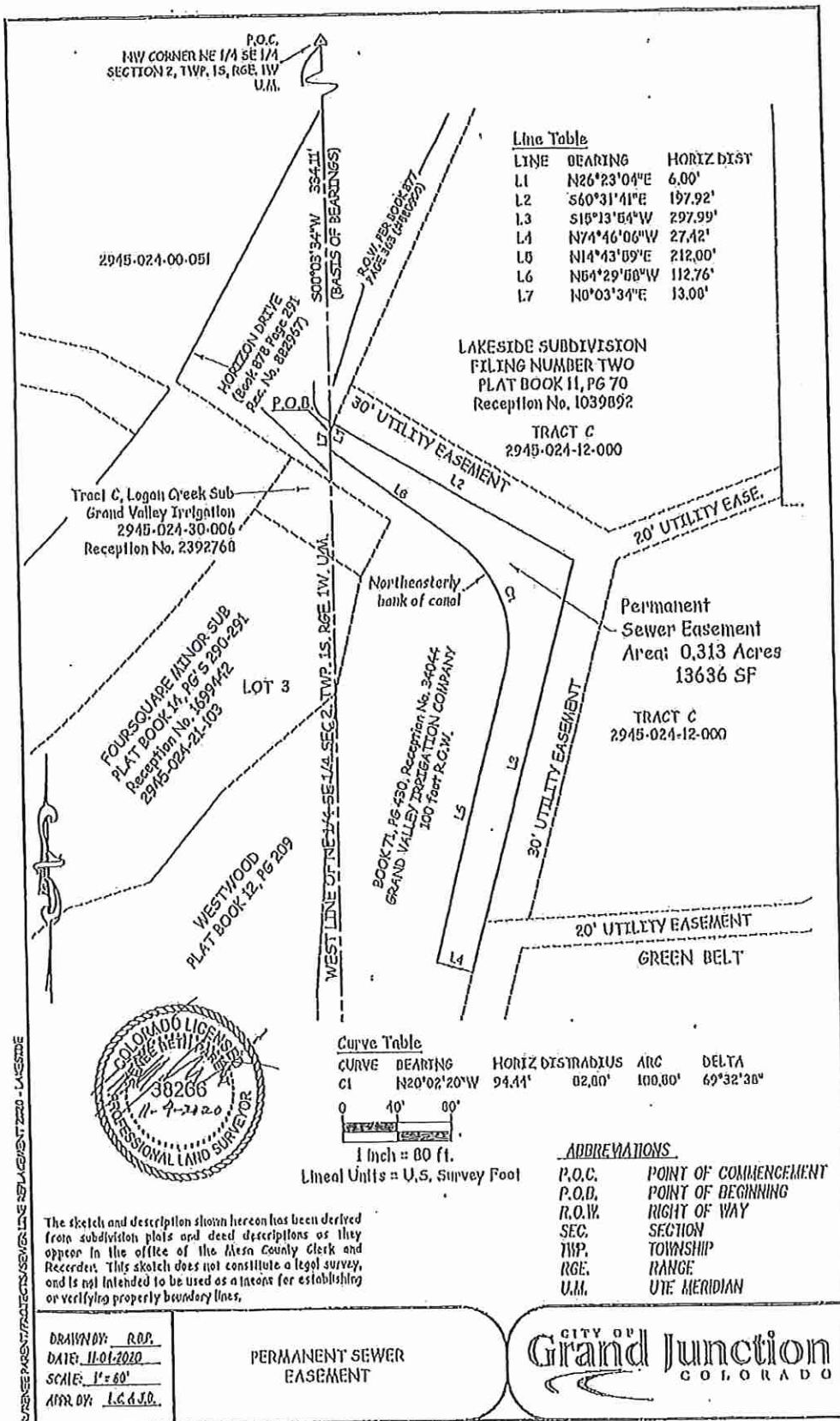
All other conditions of subject remain the same.

Respectfully,



Dolly Daniels, Senior Buyer
City of Grand Junction, Colorado

EXHIBIT B

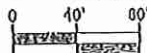


Line Table

LINE	BEARING	HORIZ DIST
L1	N26°23'04"E	6.00'
L2	S60°31'41"E	197.92'
L3	S15°13'54"W	297.99'
L4	N74°46'06"W	27.42'
L5	N14°43'09"E	212.00'
L6	N64°29'58"W	112.76'
L7	N0°03'34"E	13.00'

Curve Table

CURVE	BEARING	HORIZ DIST	RADIUS	ARC	DELTA
C1	N20°02'20"W	94.41'	62.00'	100.80'	69°32'38"



1 inch = 80 ft.
Lineal Units = U.S. Survey Foot

ABBREVIATIONS

- P.O.C. POINT OF COMMENCEMENT
- P.O.B. POINT OF BEGINNING
- R.O.W. RIGHT OF WAY
- SEC. SECTION
- TWP. TOWNSHIP
- RGE. RANGE
- U.M. UTE MERIDIAN

The sketch and description shown hereon has been derived from subdivision plats and deed descriptions as they appear in the office of the Mesa County Clerk and Recorder. This sketch does not constitute a legal survey, and is not intended to be used as a basis for establishing or verifying property boundary lines.

DRAWN BY: R.D.
DATE: 11-01-2020
SCALE: 1" = 80'
APP. BY: I.C. & J.B.

PERMANENT SEWER EASEMENT

CITY OF
Grand Junction
COLORADO



HARBEE PART/STRATEGIC/SEWER LINE REPLACEMENT 2200 - LAKESIDE

Bid Schedule: 2022 Sewer Replacements - Unawweep Ave

CONTRACTOR:

Item No.	CDOT, City Ref.	Description	Quantity	Units	Unit Price	Total Price
1	101.1	Quality Control testing and inspection as required in table 101 to ensure Work conforms to the Construction Plans and Contract Documents	72	EA	\$ _____	\$ _____
2	102.1	24" Corrugated Metal Pipe (CMP) includes backfill of trench with native materials meeting 103.16 earth backfill materials. Pipe is not to be bedded with Type A bedding material	20	LF	\$ _____	\$ _____
3	102.1	Strom Sewer Basic Manhole (48" I.D.) (Includes connection of adjacent sewer line, forming inverts and adjusting to final grade. See City Std. Detail SS-02) (Includes Type A Bedding and Haunching Material and Backfill of Trench with Class 3 Imported Trench Backfill Material)	2	EA	\$ _____	\$ _____
4	102.10a	12" Gravity Storm Sewer Pipe (RCP) (Includes cost of connection to the existing sewer pipe and Type A Bedding and Haunching Material and Backfill of Trench with Class 3 Imported Trench Backfill Material)	346	LF	\$ _____	\$ _____
5	103.3	Temporary Support of Utility Pole during open trench work nearby.	23	EA	\$ _____	\$ _____
6	104.2	2-Way Sanitary Sewer Service Cleanout (Includes Cleanout Ring and Cover and Concrete Collar in unpaved areas) (See Std Detail SS-07)	167	EA	\$ _____	\$ _____
7	104.4	Encase Sanitary Sewer Pipe in Concrete per City Specification GU-04 (20' long) (if necessary)	2	EA	\$ _____	\$ _____
8	108.2	4" Sewer Service Pipe (SDR-35 PVC) (Includes Type A Bedding and Haunching Material, Backfill of Trench with Native Materials meeting 103.16 Earth Backfill material and End-of-Service Cap)	4244	LF	\$ _____	\$ _____

9	108.2	8" Gravity Sewer Pipe (SDR-35 PVC)(Includes cost of connection to the existing sewer pipe and Type A Bedding and Haunching Material and Backfill of Trench with Class 3 imported Trench Backfill Material)	959	LF	\$ _____	\$ _____
10	108.2	8" Gravity Sewer Pipe (Certa-Flo Pipe) (Certa-Flo PVC Gravity Sewer Pipe) (SDR-21) (ASTM D-2241) (20-ft Joints) (Joint Type: Certa-Lok Restrained Joint Integral Bell) (Includes all necessary Pipe-Bursting Installation Equipment) (Pipe Bursting)	9433	LF		
11	108.3	8" x 4" Sewer Service Tap, Insert-A-Tee (To be used on the Certa-Flo PVC pipe) (Includes gasket, drilling of hole, bedding material, clean-out and all fittings required to align and connect the sewer service pipe to the sewer tap) (Contractor must properly support the service with crushed pipe bedding material to avoid added stress on the service during backfilling and compaction)	165	EA		
12	108.5	Sanitary Sewer Basic Manhole (48" I.D.) (Includes connection of adjacent sewer line, forming inverts and adjusting to final grade. See City Std. Detail SS-02) (Includes Type A Bedding and Haunching Material and Backfill of Trench with Class 3 Imported Trench Backfill Material)	33	EA	\$ _____	\$ _____
13	108.5	Manhole Barrel Section (D>5') (48" I.D.)	73	Vert. Ft.	\$ _____	\$ _____
14	108.5	Sanitary Sewer Basic Drop Manhole (48" I.D.) (Includes connection of adjacent sewer line, forming inverts and adjusting to final grade. See City Std. Detail SS-04) (Includes Type A Bedding and Haunching Material and Backfill of Trench with Class 3 Imported Trench Backfill Material)	2	EA	\$ _____	\$ _____
15	108.5	Manhole Interior Corrosion Protection (100 mils Dry Film Thickness, min.) (includes manhole surface preparation and filling in bugholes and imperfections prior to coating)	74	Vert. Ft.	\$ _____	\$ _____

16	202	Removal of Manhole (Remove Manhole Cone Section, Ring, and Cover and deliver to City Shops. Contractor shall fill remaining barrel sections with flow fill material)	3	EA	\$ _____	\$ _____
17	202	Removal of Asphalt Mat (Full Depth)	4388	SY	\$ _____	\$ _____
18	202	Asphalt Removal (Planing) (Thickness Varies)	2628	SY	\$ _____	\$ _____
19	202	Removal of Concrete (Includes, but not limited to, curb, gutter, sidewalk, driveway, slabs, V-pans, curb ramps, intersection corners, aprons, landscape borders, and concrete walls)	870	SY	\$ _____	\$ _____
20	202	Removal of Tree (size shown on plans) (Must be removed by licensed arborist, per City Municipal Code 8.32.110)	5	EA	\$ _____	\$ _____
21	208	Storm Drain Inlet Protection (Silt-Sack Style or Approved Equal) (Includes Maintenance & Removal of Debris, & Removal of Inlet Protection)	23	EA	\$ _____	\$ _____
22	208	Erosion Control Log	100	LF	\$ _____	\$ _____
23	210	Reset Fence (Height and Material Shown on Plan)	428	LF	\$ _____	\$ _____
24	210	Reset Irrigation Pipe (PVC Irrigation Pipe) (Includes pipe, fittings, equipment, materials, and labor to relocate irrigation pipe)	3	Lump Sum	\$ _____	\$ _____
25	211	Dewatering (Includes acquiring a CDPHE Dewatering Permit and adhering to the discharge requirements of the State Permit) (if needed)	1	Lump Sum	\$ _____	\$ _____
26	212	Re-Sod Area as Shown (Includes 6" Thick Imported Topsoil placed prior to sod placement)	4100	SF	\$ _____	\$ _____
27	214	Deciduous Tree (1 Inch Caliper) (Match in kind)	2	EA	\$ _____	\$ _____
28	304	Aggregate Base Course (Class 6) (12" thick)	50	SY	\$ _____	\$ _____
29	304	Aggregate Base Course (Class 6) (6" thick)	5228	SY	\$ _____	\$ _____

30	304	Aggregate Base Course (Class 6) - Shoulder Edging Gravel	250	Tons	\$ _____	\$ _____
31	401	Hot Bituminous Pavement (4" Thick) (Grading SX, Binder Grade PG 64- 22)(GYR.=75) (Two 2" Lifts)	6235	SY	\$ _____	\$ _____
32	401	Hot Bituminous Pavement (Patching)(2" Thick) (Grading SX, Binder Grade PG 64-22, GYR.=75) (One 2" Lift Top Mat) (T-Top Patch) (See City Std. Detail GU-03)	3552	SY	\$ _____	\$ _____
33	608/304	Monolithic Vertical Curb, Gutter, and Sidewalk (7-ft wide)	30	SY		\$ _____
34	608.06	Concrete Drainage Pan (6' Wide)	20	SY	\$ _____	\$ _____
35	620	Portable Sanitary Facility	1	Lump Sum	\$ _____	\$ _____
36	625	Construction Surveying (Includes As- Built Drawings)	1	Lump Sum	\$ _____	\$ _____
37	626	Mobilization	1	Lump Sum	\$ _____	\$ _____
38	630	Traffic Control (Complete in Place)	1	Lump Sum	\$ _____	\$ _____
39	Pump	Bypass Sewage Pumping (As deemed necessary by City or Contractor)	6	Lump Sum	\$ _____	\$ _____
MCR		Minor Contract Revisions	---	---	---	\$ <u>100,000.00</u>
Bid Amount:					\$ _____	

Bid Amount: _____