

INDEX			CONTRACT ITEM NO.	CONTRACT ITEM	UNIT	TRAIL		BRIDGE		PROJECT TOTAL	
BOOK	PAGE	SHEET				PLAN	AS CONST.	PLAN	AS CONST.	PLAN	AS CONST.
			201-00000	Clearing and Grubbing	LS	1		0		1	
			202-00035	Removal of Pipe	LF	16		0		16	
			202-01000	Removal of Fence	LF	1100		0		1100	
			203-00060	Embankment Material (Complete in Place)	CY	423		0		423	
			206-00000	Structural Excavation	CY	0		30		30	
			206-00100	Structure Backfill (Class 1)	CY	0		40		40	
			206-00200	Structure Backfill (Class 2)	CY	0		10		10	
			207-00206	Topsoil (Including Stockpile)	CY	130		0		130	
			208-00012	Erosion Log Type 1 (9 Inch)	LF	3300		0		3300	
			208-00045	Concrete Washout Structure	EA	2		0		2	
			208-00070	Vehicle Tracking Pad	EA	2		0		2	
			208-00400	Water Control	LS	1		0		1	
			212-00007	Seeding (Native) (Hydroseed)	ACRE	0.51		0		0.51	
			240-00015	Wildlife Biologist	HOUR	40		0		40	
			304-03000	Aggregate Base Course (Class 3)	TONS	810		0		810	
			304-06000	Aggregate Base Course (Class 6)	TONS	990		0		990	
			306-01000	Reconditioning (12" Deep)	SY	2630		0		2630	
			420-00132	Geotextile (Separator)(Class 1)	SY	2630		0		2630	
			502-00460	Pile Tip	EA	0		4		4	
			502-00500	Complete Joint Penetration (CJP) Splice	EA	0		4		4	
			502-11253	Steel Piling (HP 12x53)	LF	0		200		200	
			506-00206	Riprap (6 Inch)	CY	0		50		50	
			514-00042	Pedestrian Railing (Steel) (Special)	LF	0		20		20	
			601-03040	Concrete Class D (Bridge)	CY	0		16		16	
			601-40300	Structural Concrete Coating	SY	0		20		20	
			602-00000	Reinforcing Steel (Epoxy Coated)	LB	0		2200		2200	
			603-01185	18 Inch Reinforced Concrete Pipe (Complete In Place)	LF	72		0		72	
			603-50008	8" PVC Pipe (SDR-35) (Complete in Place)	LF	35		0		35	
			604-30010	Manhole Slab Base (10 Foot)	EA	1		0		1	
			607-01055	Fence Wire with Treated Wooden Posts	LF	1060		0		1060	
			608-00026	Concrete Bikeway (6 Inch)	SY	1792		0		1792	
			613-01200	2 Inch Electrical Conduit (Plastic)	LF	1868		0		1868	
			613-07001	Type One Pull Box	EA	22		0		22	
			613-10000	Wiring	LS	1		0		1	
			613-30005	Light Standard and Luminaire (Pedestrian)	EA	19		0		19	
			613-40012	Light Standard Foundation (Special)	EA	19		0		19	
			613-30006	Light Standard and Luminaire (Pedestrian BRIDGE)	EA	0		18		18	
			620-00020	Sanitary Facility	LS	1		0		1	
			625-00000	Construction Surveying	LS	1		0		1	
			626-00000	Mobilization	LS	1		0		1	
			628-00045	Bridge Girder and Deck Unit (45 Feet to 50 Feet)	EA	0		1		1	
			630	Traffic Control (Complete In Place)	LS	1		0		1	
			630	Traffic Control Plan	LS	1		0		1	

REVISION Δ REV 1	DESCRIPTION	DATE	DRAWN BY	JCS	DATE	2021
REVISION Δ REV 2			DESIGNED BY	JCS	DATE	2021
REVISION Δ REV 3			CHECKED BY	KA	DATE	OCTOBER 2022
REVISION Δ REV 4			APPROVED BY	KH	DATE	OCTOBER 2022

NO SCALE



PUBLIC WORKS
ENGINEERING DIVISION
PROJECT NO. MTF M555-035

24 ROAD BIKE PATH
SUMMARY OF APPROXIMATE QUANTITIES
December 5, 2022

SUMMARY OF EARTHWORK QUANTITIES

INDEX			PROJECT TOTAL
Book	Page	Sheet	
			203-00060 EMBANKMENT MATERIAL (CIP) QUANTITY CALCULATED FROM CIVIL3D - TIN SUBTRACTION MINUS CONCRETE BIKE PATH AND ASSOCIATED CL. 6 PRISM TOTAL FOR PAY QUANTITIES
			CU. YD. 1250 -827 423
			UNCLASSIFIED EXCAVATION (CIP) (FOR INFORMATION ONLY) (QUANTITY CALCULATED FROM CIVIL3D - TIN SUBTRACTION) UNCLASSIFIED EXCAVATION (INCLUDES TAILWATER DITCH) TOTAL
			CU. YD. 42 42

INDEX			EARTHWORK QUANTITIES BALANCE (FOR INFORMATION ONLY)	PROJECT TOTAL	
Book	Page	Sheet		CU. YD.	As Const.
			EMBANKMENT MATERIAL EXPANDED EMBANKMENT TIMES FACTOR 1.15 BALANCE Import Material Required	486 444	

NOTES

- HAULING WILL NOT BE PAID FOR SEPARATELY, BUT SHALL BE INCLUDED IN THE WORK.
- THERE IS NO DESIGNATED BORROW SITE. THE CONTRACTOR IS RESPONSIBLE FOR OBTAINING THE EMBANKMENT BORROW SOURCE.
- ONSITE TOPSOIL SHALL BE STRIPPED, STOCKPILED AND PLACED ON FINISHED SLOPES. ALL EXCESS TOPSOIL SHALL BE PLACED AS EMBANKMENT OUTSIDE OF THE TRAIL PRISM.

TABULATION OF SURFACING

STATION	LENGTH (FEET)	AVERAGE WIDTH (FEET)	CONCRETE BIKEWAY (6 INCH)		AGGREGATE BASE COURSE (CLASS 6)		AGGREGATE BASE COURSE (CLASS 3)		RECONDITIONING (12" DEEP)	GEOTEXTILE (SEPARATOR) (CLASS 1)	TOPSOIL (INCLUDING STOCKPILE)		REMARKS
			DEPTH (IN)	SY	DEPTH (IN)	TON	DEPTH (IN)	TON	SY	SY	DEPTH (IN)	CY	
25+46 - 32+41.50	695.5	10	6	780	6	240	9	360					Trail
25+46 - 32+41.50	695.5	4			12	190					6	60	Shoulders
25+46 - 32+41.50	695.5	15							1160	1160			Subgrade
32+93.50 - 41+70.30	876.8	10	6	980	6	300	9	450					Trail
32+93.50 - 41+70.30	876.8	4			12	240					6	70	Shoulders
32+93.50 - 41+70.30	876.8	15							1470	1470			Subgrade
34+41.47	18	8	6	16	6	10							Bench Pad
40+71.26	18	8	6	16	6	10							Bench Pad
TOTAL				1792		990		810	2630	2630		130	

TABULATION OF FENCING & PIPE STRUCTURES

STATION	SIDE	REMOVAL OF FENCE	FENCE WIRE WITH TREATED WOODEN POSTS	REMOVAL OF PIPE	18 INCH REINFORCED CONCRETE PIPE	8 INCH PVC PIPE (SDR-35)	MANHOLE SLAB BASE (10 FOOT)
			LF		LF	LF	LF
26+00					40		
30+55 - 32+41.50	RT	1100	192				
32+93.50 - 41+70.30	RT		868				
30+63.50				16	32		
30+55						35	
30+53.77	RT						1
TOTAL		1100	1060	16	72	35	1

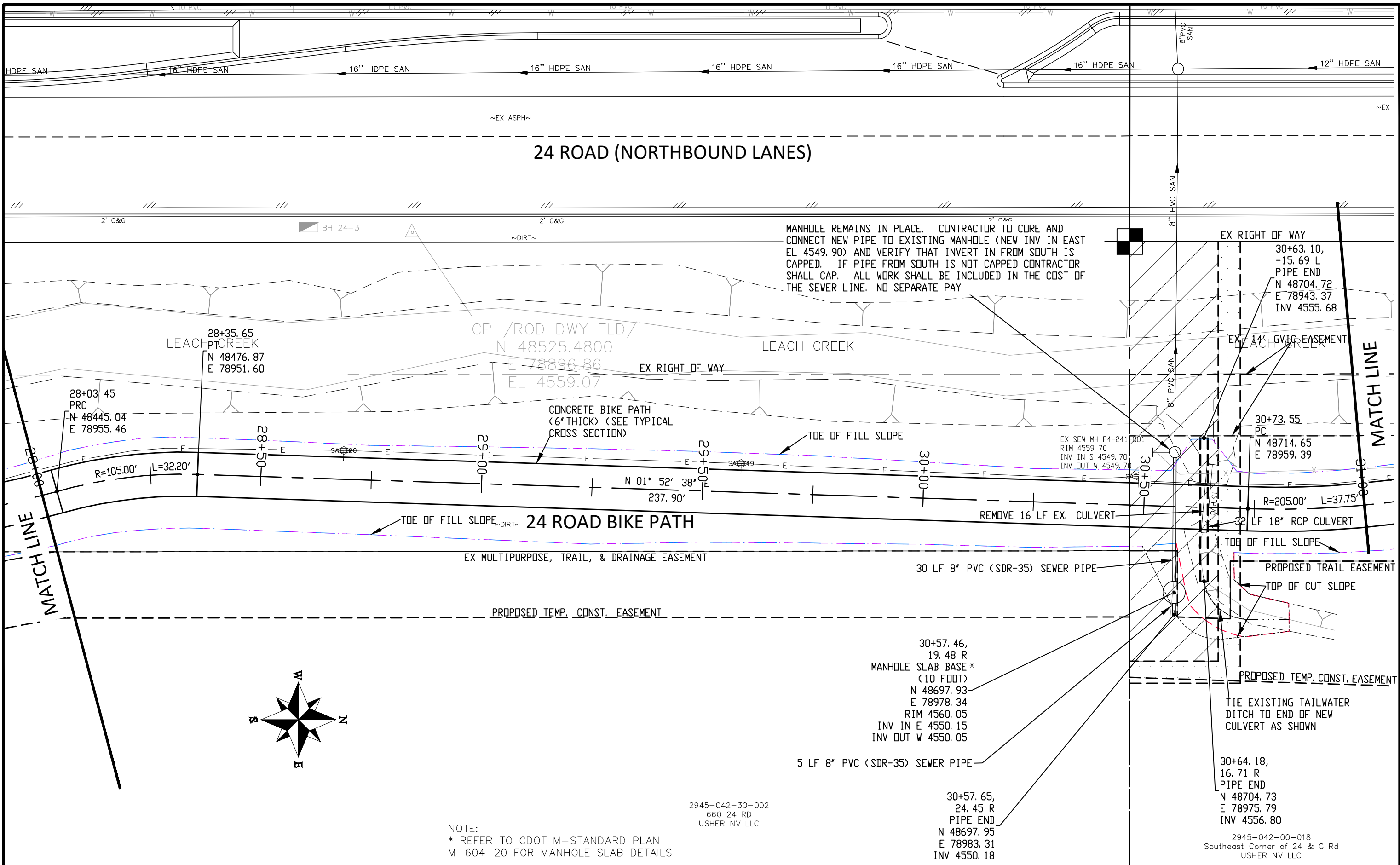
REVISION Δ REV 1	DESCRIPTION	DATE	DRAWN BY JCS	DATE 2021
REVISION Δ REV 2			DESIGNED BY JCS	DATE 2021
REVISION Δ REV 3			CHECKED BY KA	DATE OCTOBER 2022
REVISION Δ REV 4			APPROVED BY KH	DATE OCTOBER 2022

SEE PLAN FOR SCALE INFO



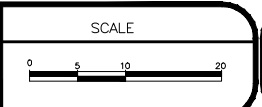
PUBLIC WORKS
ENGINEERING DIVISION
PROJECT NO. MTF M555-035

24 ROAD BIKE PATH
TABULATION OF QUANTITIES
December 5, 2022



REVISION	DESCRIPTION	DATE
REVISION Δ REV 1		
REVISION Δ REV 2		
REVISION Δ REV 3		
REVISION Δ REV 4		

DRAWN BY JCS DATE 2021
 DESIGNED BY JCS DATE 2021
 CHECKED BY KA DATE OCTOBER 2022
 APPROVED BY KH DATE OCTOBER 2022



PUBLIC WORKS
ENGINEERING DIVISION
 PROJECT NO. MTF M555-035

24 ROAD BIKE PATH
BIKE PATH PLAN - 2
 December 5, 2022

NOTE:
 * REFER TO CDOT M-STANDARD PLAN
 M-604-20 FOR MANHOLE SLAB DETAILS

2945-042-30-002
 660 24 RD
 USHER NV LLC

30+57.46,
 19.48 R
 MANHOLE
 SLAB BASE *
 (10 FOOT)
 N 48697.93
 E 78978.34
 RIM 4560.05
 INV IN E 4550.15
 INV OUT W 4550.05

30+57.65,
 24.45 R
 PIPE END
 N 48697.95
 E 78983.31
 INV 4550.18

2945-042-00-018
 Southeast Corner of 24 & G Rd
 USHER NV LLC