

604 & 616
WALNUT AVE.

tree roots

12' SAWCUT
60 LF / 6' WIDE
DO. C, G & SW.
4' x 60'
ASPHALT

#1

#2

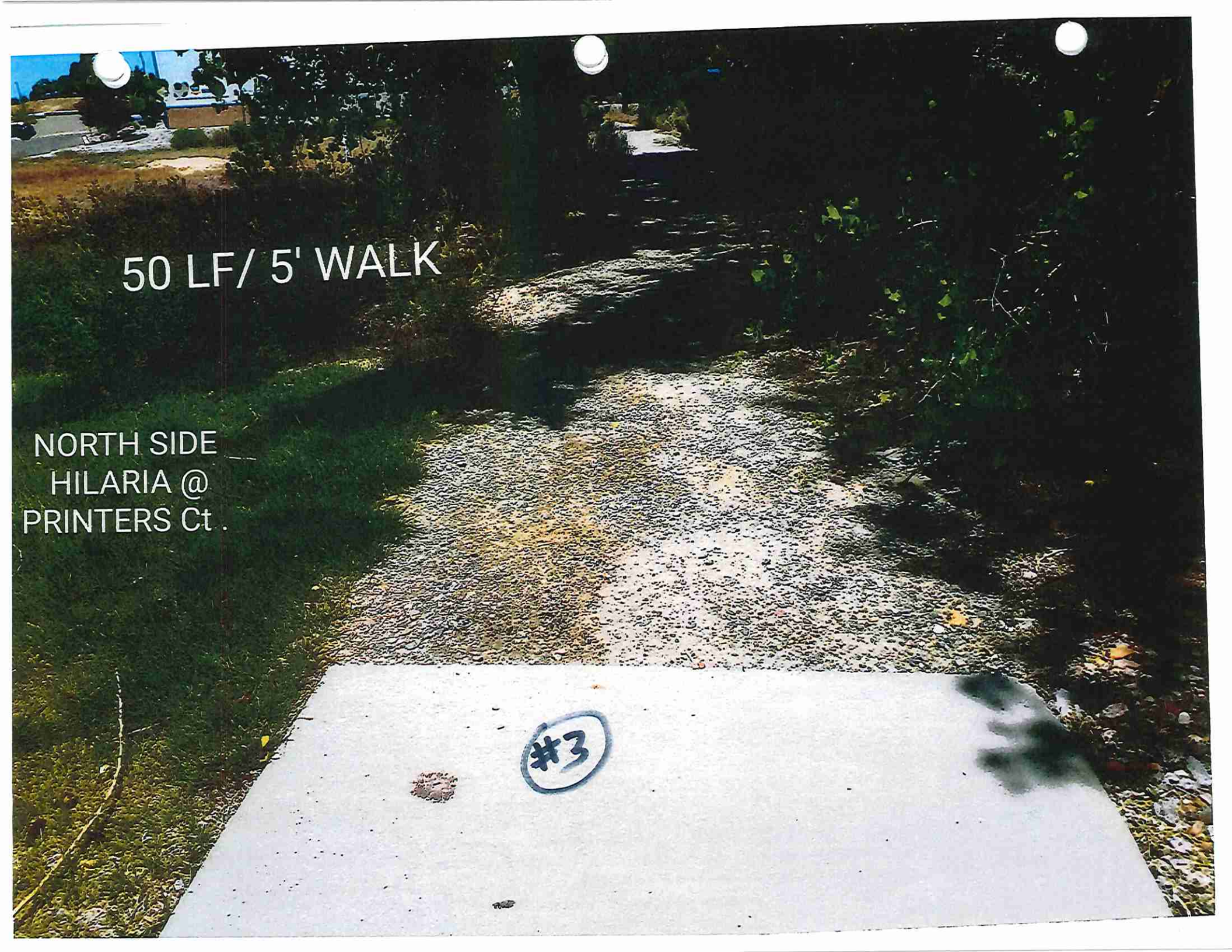
35 LF / 5' WALK

NE COR.
PRINTERS WY.
& HILARIA

50 LF/ 5' WALK

NORTH SIDE
HILARIA @
PRINTERS Ct.

#3





5' Saw-cut

10 LF / 2.5'
CURB & GUTTER

4

2308 W Ridges
Blvd.

478 GLEN RD.

#5

30'x 6'
DRIVEWAY
6" THICK
25' SAWCUT
30'x 2' ASPHALT



40 LF/ 6.3' WIDE
D.O. C,G & SW.

40'x 4' ASPHALT

20 LF/ SAWCUT

604 ARAPAHOE
WAY

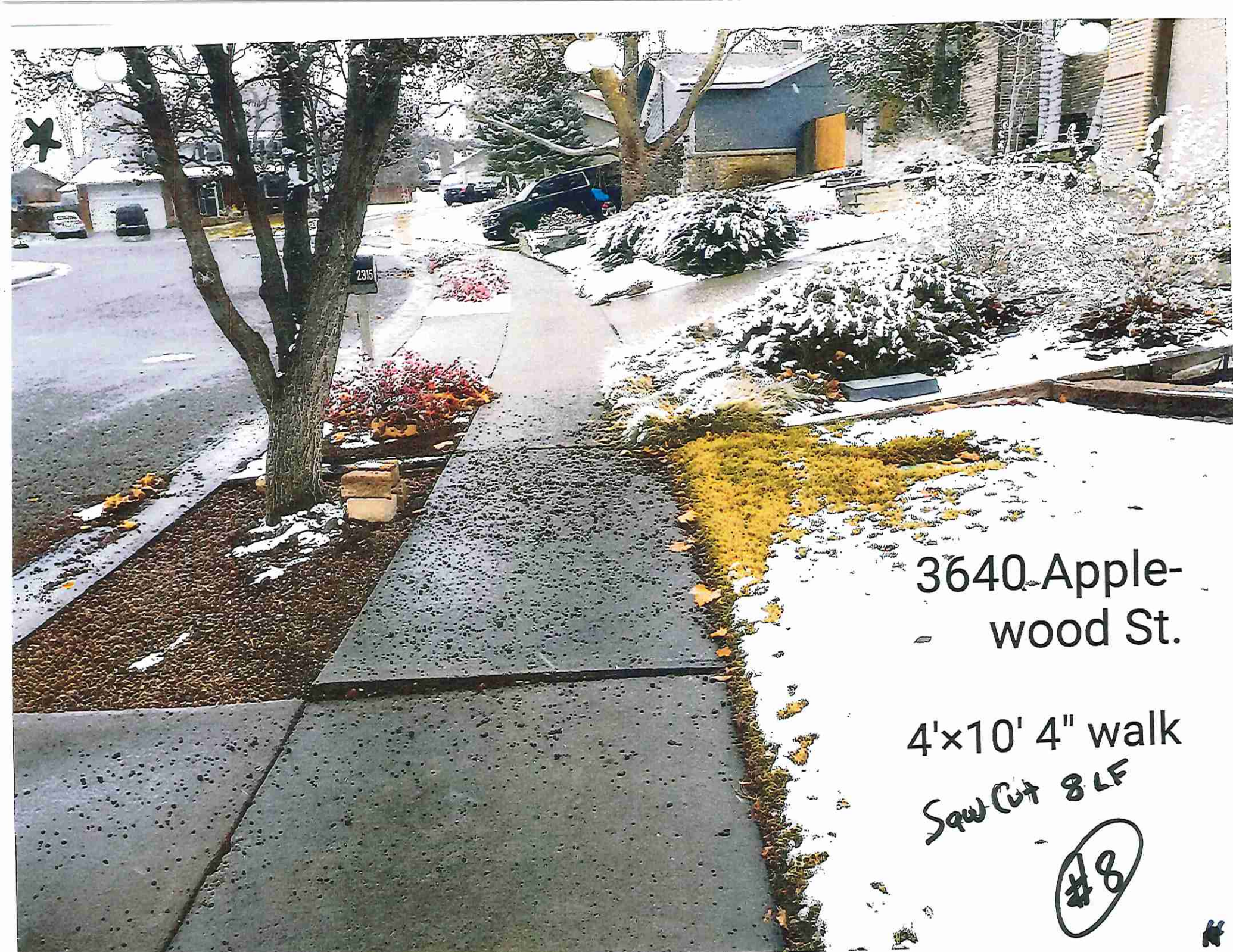
#6

#7

2335 Cypress Ct.

- 8'x 9' (4" walk)
- 19'x 10.5' driveway (6" thick)
- 10' sawcut

3



3640 Applewood St.

4'x10' 4" walk

Saw Cut 8 LF

#8

#

2990
2990
SUMMERBROOK
DRIVE

#9

6" Driveway
Section

20×6.5
 $= 14.5 \text{ SY}$

20' x 6.5'
S/E & S/W
= 14.5 SY

14.5 LF SAVOUT

5

10

8" THICK WALK
21' x 5'

(SIDEWALK
ACROSS
ALLEY)

EAST SIDE 14th
BETWEEN MAIN
& COLORADO

5

12

11

400 BLOCK
BELFORD AVE .

BOTH SIDES
OF STREET

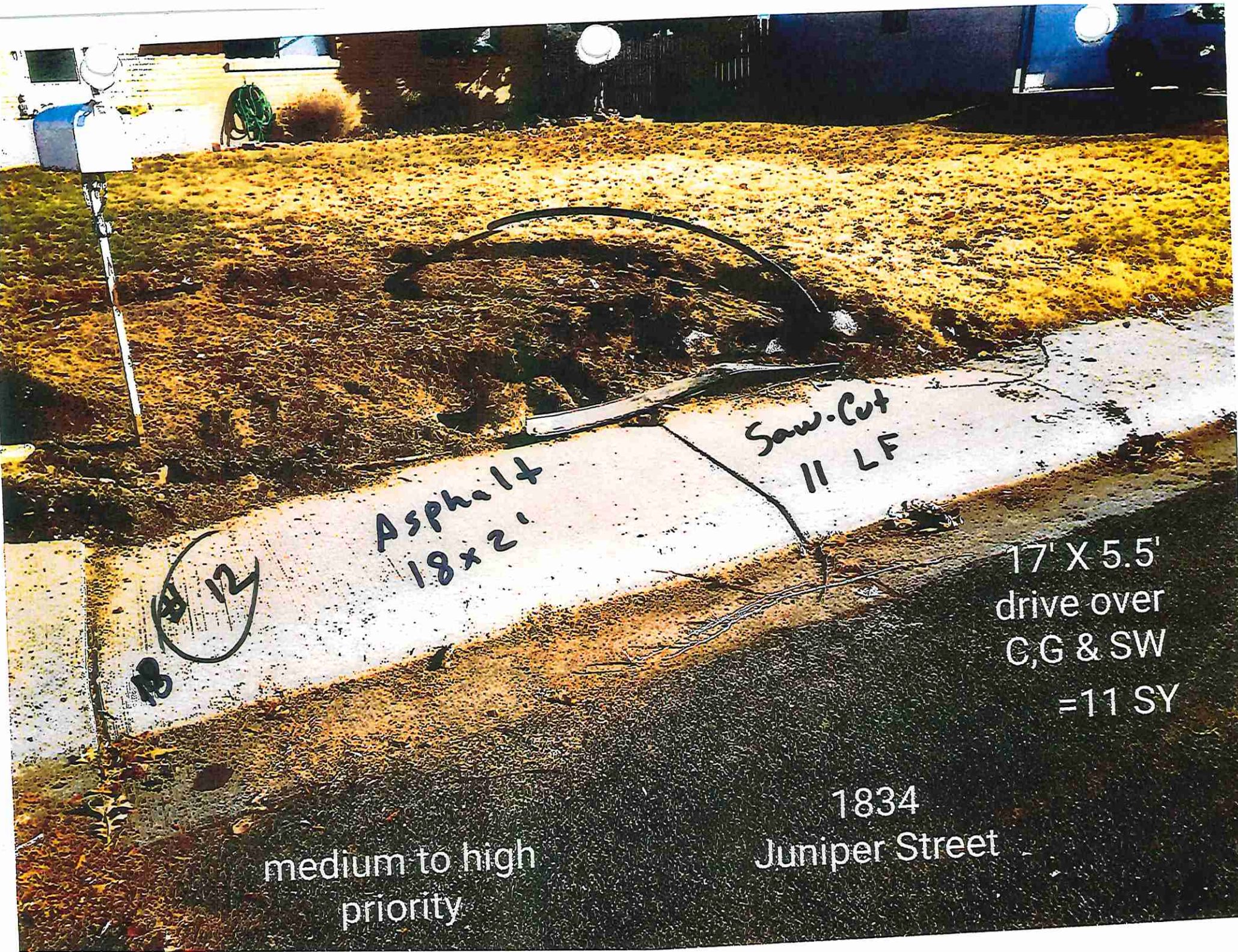
VARIOUS
LOCATIONS

300 LF / 5' WALK
4" THICK

50 LF / 5' WALK
6" THICK

60' SAWCUT





12

Asphalt
18 x 2'

Saw. Cut
11 LF

17' X 5.5'
drive over
C, G & SW
= 11 SY

medium to high
priority

1834
Juniper Street

10LF/5' WALK
(4" THICK)

DRIVEWAY
APRON
(8" THICK)
25' x 30'

25' x 2'
ASPHALT

20' SAWCUT

ALLEY
APPROACH
WEST SIDE
2ND STREET
BETWEEN
CHIPETA AVE. &
GUNNISON AVE.

(8" walk)
5 x 20

13

1026 MAIN ST.

20LF / 5' WALK
(6" THICK)

50' SAWCUT

#14

124

520 WALNUT
AVENUE

15

20 LF / 5' WIDE
DO. C, G & SW

ASPHALT
50' x 4'

SAWCUT
40 LF

30 LF / 5' WIDE
DRIVEWAY
(6" THICK)

2315
DOG WOOD
COURT

16

Spring
Valley

DRIVEWAY
(6" THICK)
25' x 6.5'

ASPHALT
25' x 2'

SAWCUT
= 30'

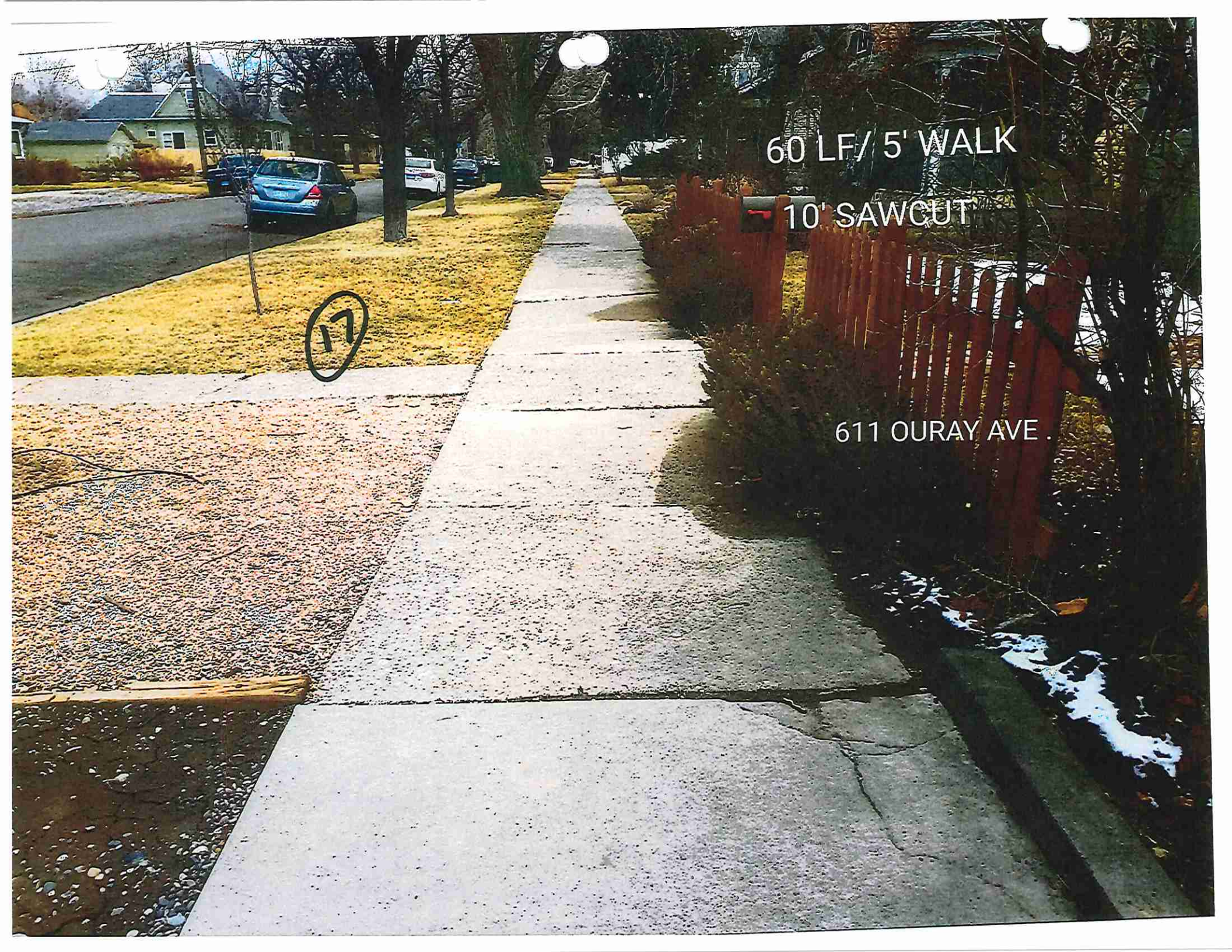
4

60 LF/ 5' WALK

10' SAWCUT

17

611 OURAY AVE .



240 & 230
N. 11TH ST.

15 LF/ 5' WALK
(6" THICK)

45 LF/ 5' WALK
(4" THICK)

10' SAWCUT



1405 ROOD AVE .

150 LF/ 5' WALK
(4" THICK)

30' SAWCUT

19



1414,1410&1404
ROOD AVE .

40LF / 5' WALK
(6" THICK)

100LF / 5' WALK
(4" THICK)

40' SAWCUT

618 W COLO AVE.

21

600 BLOCK
W. COLO. AVE.
(VARIOUS
LOCATIONS)

200 LF / 5' WALK
(4" THICK)

100 LF / 5' WALK
(6" THICK)

SAWCUT = 75 LF



25 LF /
6.5' DRIVEWAY

25 LF/6.5'
D.O. C,G & SW.

50' SAWCUT

40'x2'
ASPHALT

ACROSS THE
STREET FROM
340 SHADOW
LAKE RD.

340 SHADOW
LAKE DRIVE

PRIVATE
PROPERTY
NO
TRESPASSING

23

35 LF/ 6.5' DRIVE-
WAY (6" THICK)

28' x 2' ASPHALT

25' SAWCUT

5

2345 HALL
AVENUE

65 LF/ 5.2' WIDE
D.O. C, G&SW
11' SAWCUT

new private drive-
way

24

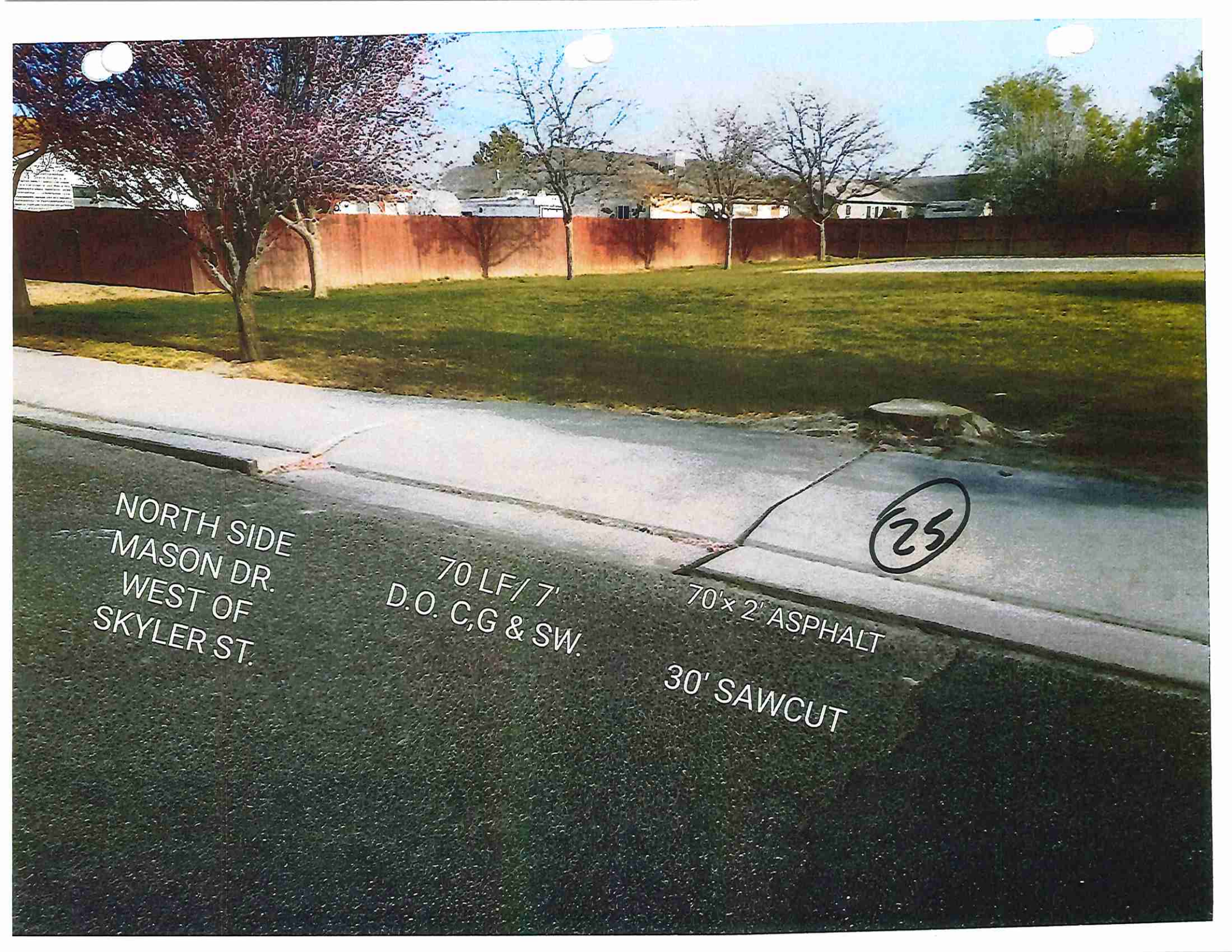
it looks like a
concrete mixer-
broke the walk

NORTH SIDE
MASON DR.
WEST OF
SKYLER ST.

70 LF / 7'
D.O. C, G & SW.

70' x 2' ASPHALT
30' SAWCUT

25



1129
COLORADO AVE.

100 LF/2'
CURB & GUTTER

15' SAWCUT

2' x 100
ASPHALT

10' x 10'
ADA
RAMP

(2) DETECTABLE
WARNING MATS

26

27

519 LIGRANI LN.
(brakes plus)

35 LF/ 7' MONO.

30' SAWCUT

2'x 40' ASPHALT

**brakes
plus**
Complete Auto Service

LOWE'S

Gas

Tire



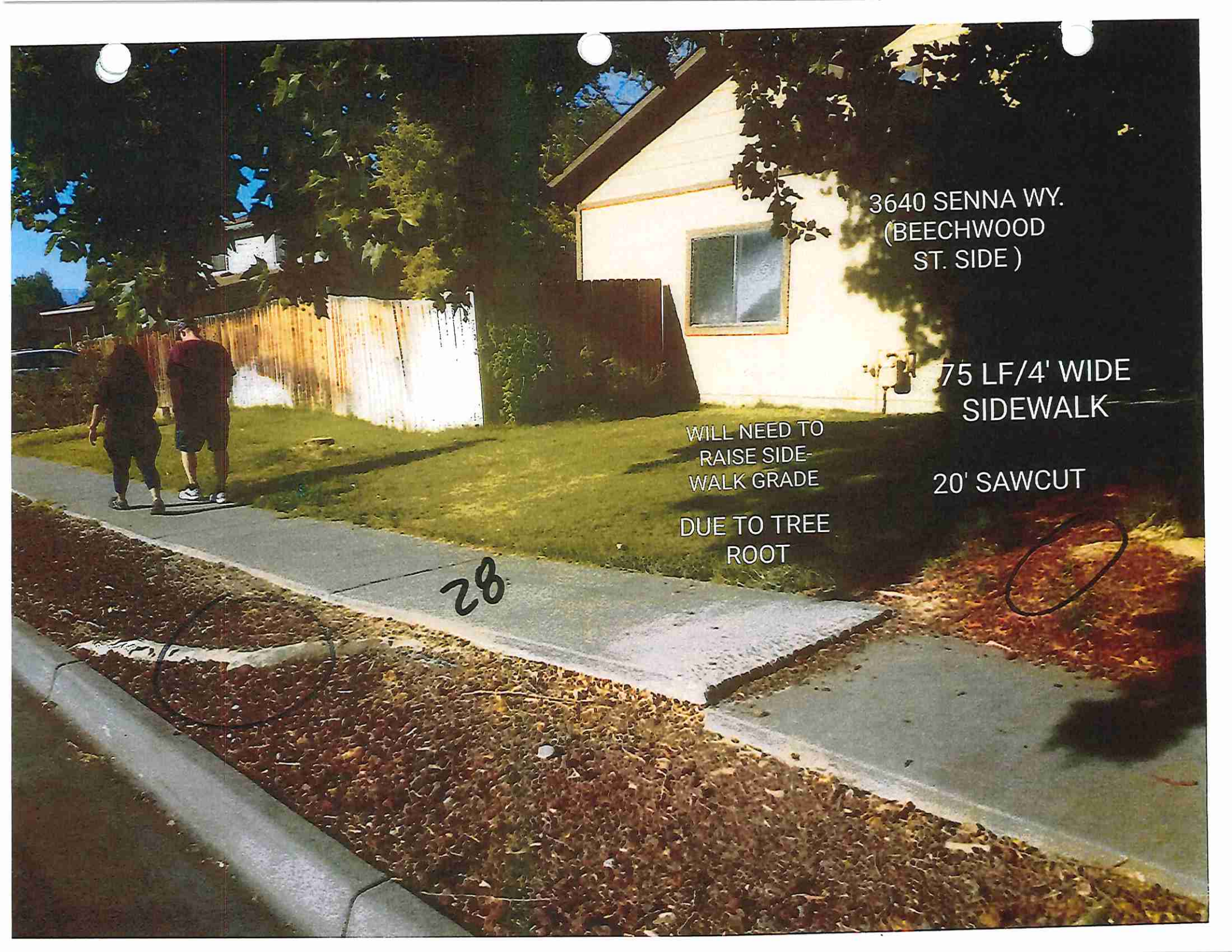
3640 SENNA WY.
(BEECHWOOD
ST. SIDE)

75 LF/4' WIDE
SIDEWALK

WILL NEED TO
RAISE SIDE-
WALK GRADE
DUE TO TREE
ROOT

20' SAWCUT

28



2037 F 3/4 ROAD

29

20' x 2'
ASPHALT

10LF / 7'
6" THICK DW.

10LF / 7'
C,G& SW

28 LF
SAWCUT

20 LF/ 7' MONO
C,G & SW

14, SAWCUT

2606
PARTRIDGE CT .

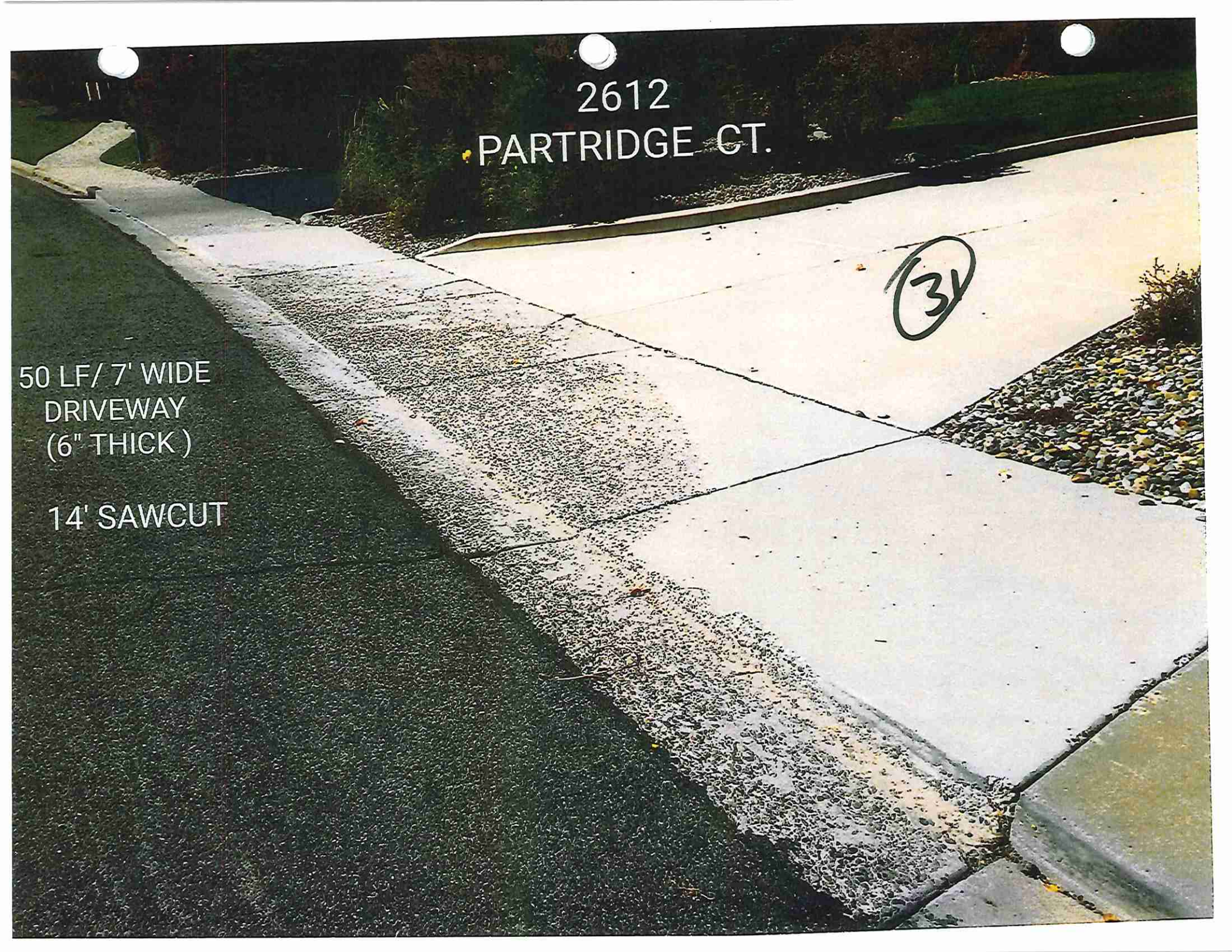
30

2612
PARTRIDGE CT.

31

50 LF/ 7' WIDE
DRIVEWAY
(6" THICK)

14' SAWCUT





20 LF / 7' MONO
C,G & SW.

REMOVE TOP 12"
ABANDON
POLE BASE

CONCRETE
Fillet (8") 45' SAWCUT
17 SY

HANDCAP
RAMP
9 SY
12' LONG x
6" WIDE
CURB @
BACK OF RAMP

(2) TRUNCATED
DOMES

32
Pole
base

575 24 1/2 RD.

RED
LOBSTER
ENTRANCE

Ranch Rd

2558 RANCH RD.

(WILSON DR.
SIDE OF
PROPERTY.)

150 LF/2'
DRAIN PAN
(8" THICK)
35 SY

200' x 3'
ASPHALT
(4" THICK)
70 SY

11' x 12'
FILLET
(8" THICK)
15 SY

20' SAWCUT

33



SPEED
LIMIT
35

250 LF/ 7' MONO.
C,G & SW

300' SAWCUT

270'x 2'
ASPHALT

3A

SOUTH SIDE
27 1/2 RD.
BETWEEN
PATTERSON RD
& HORIZON DR
(numerous
locations)

2385
PHEASANT
TRAIL
COURT

35

Pheasa

15' SAWCUT
2 TRUNCATED
DOMES
40'x 2' ASPHALT

CONCRETE
CORNER, FILLET
& RAMP
(8" THICK)
=
45 SY

2305

2305
SPRINGSIDE
COURT

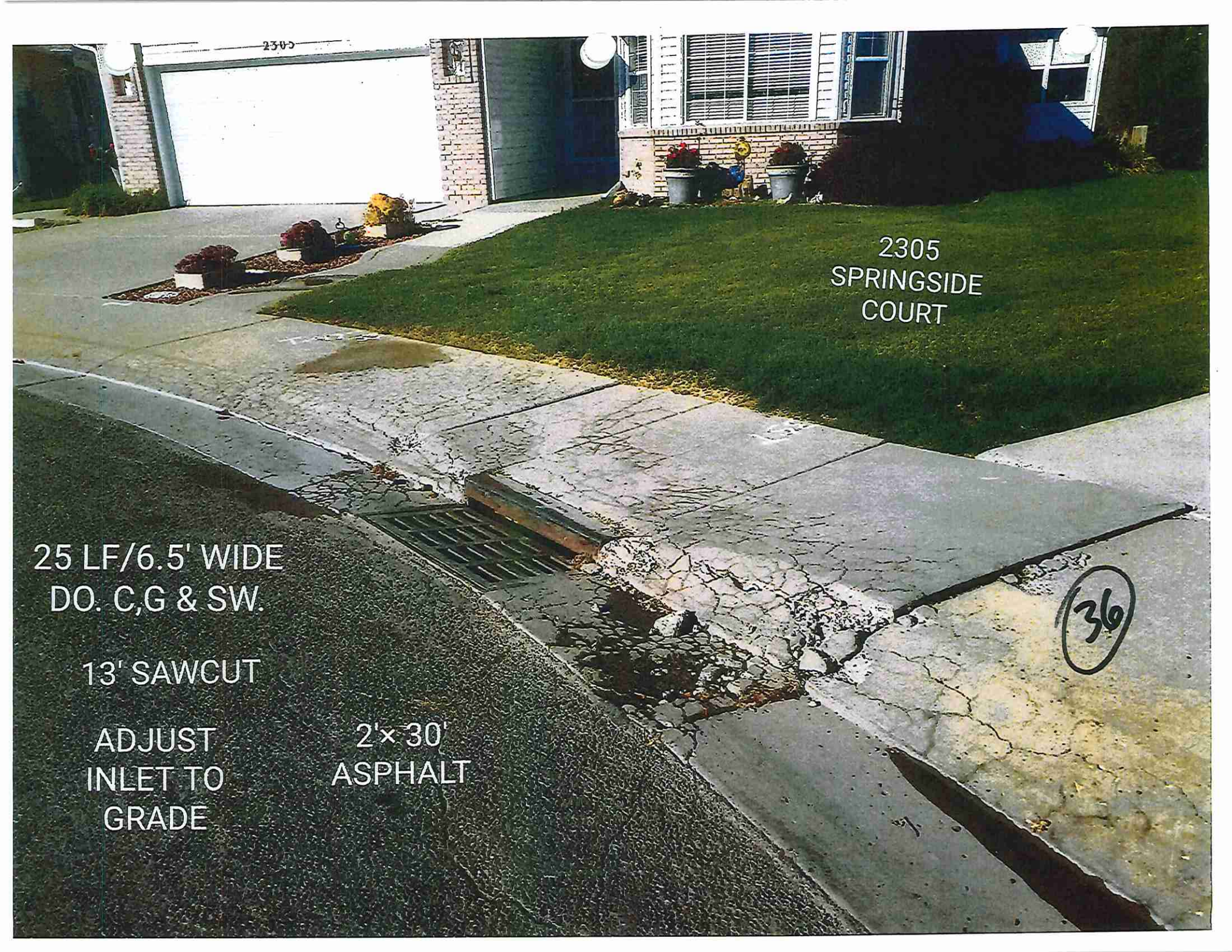
25 LF/6.5' WIDE
DO. C,G & SW.

13' SAWCUT

ADJUST
INLET TO
GRADE

2'x 30'
ASPHALT

36

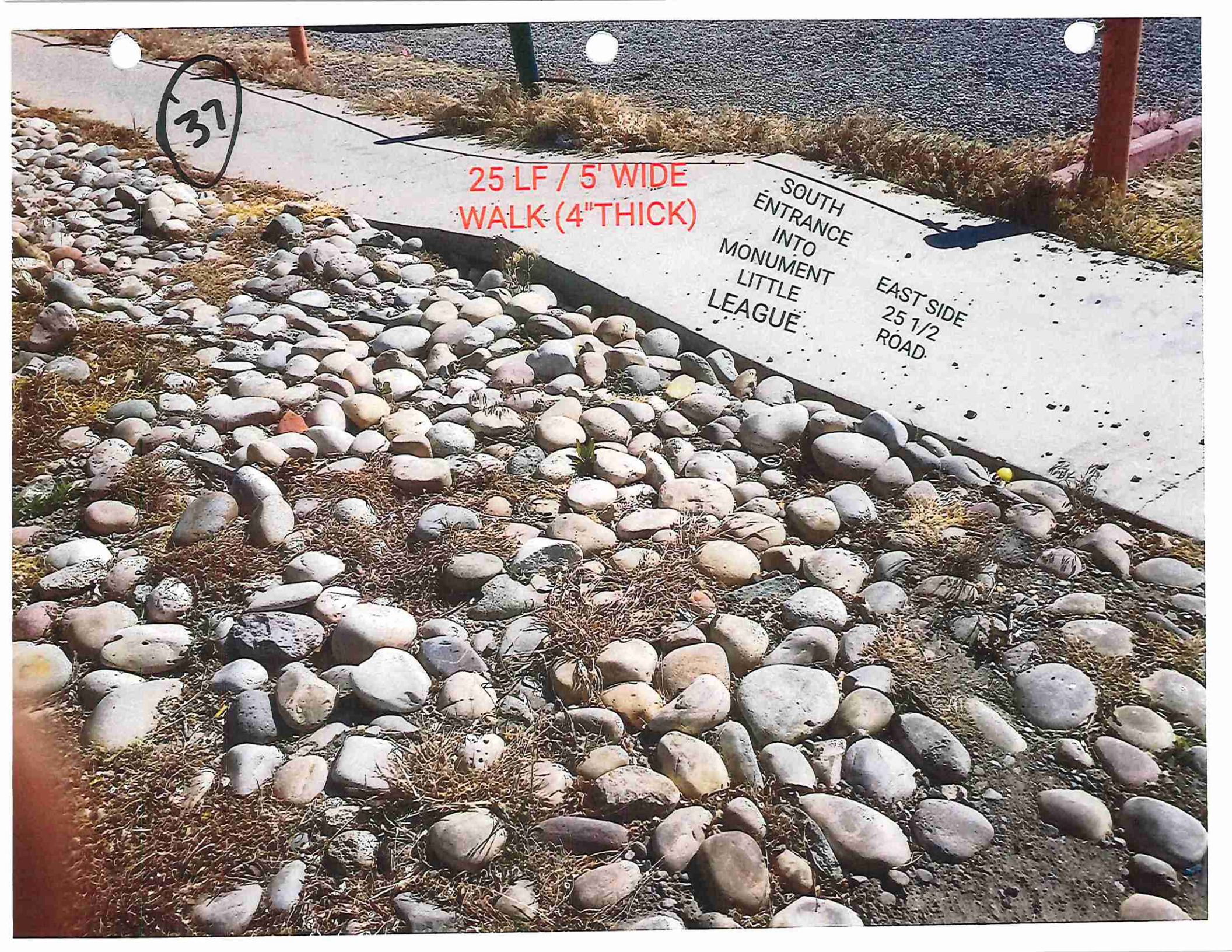


37

25 LF / 5' WIDE
WALK (4" THICK)

SOUTH
ENTRANCE
INTO
MONUMENT
LITTLE
LEAGUE

EAST SIDE
25 1/2
ROAD



38

2155 Broadway
Fire Station #5

8" thick
concrete
7 sy

to include
rebar

6" thick
asphalt
20 sy

8" thick
concrete
7 sy

to include
rebar

25' sawcut

961 MAIN ST.
(10TH ST. SIDE)

150LF/ 4' WALK
(4" THICK)

30' SAWCUT

39



2921 Bookcliff
Avenue

40

80 LF / 6' WIDE
D.O. C, G & SW

12' SAWCUT

80'x 2' (4" THICK)
ASPHALT