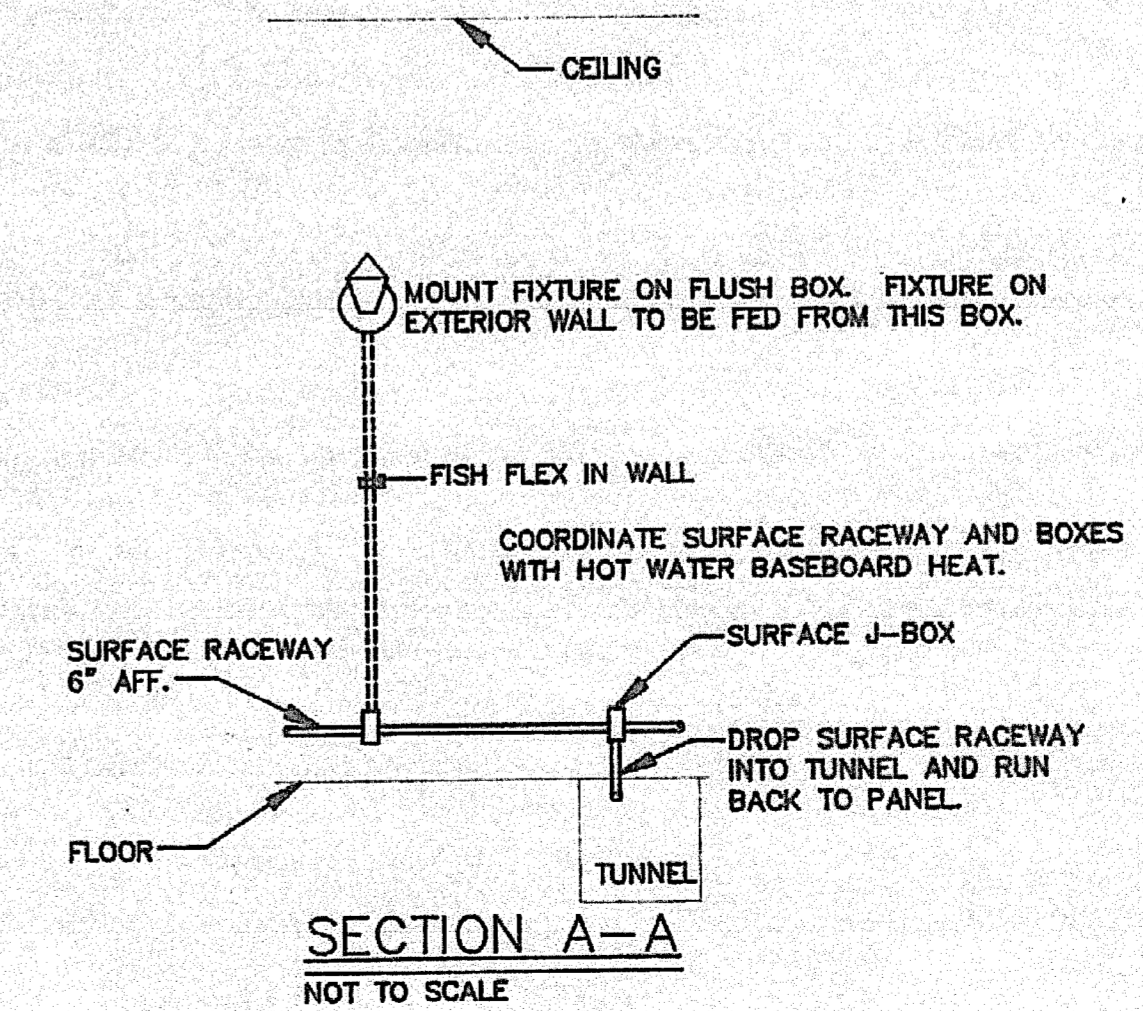


FLAG NOTES:

- 1 REPLACE EXISTING LIGHT WITH NEW FIXTURE. WIRE TO EXISTING CIRCUIT AND SWITCH.
- 2 EXISTING LIGHT FIXTURES AND DEVICES TO REMAIN AS THEY ARE.
- 3 DROP WIRING DOWN IN FURRED AREA OF WALL AND INTO TUNNEL.
- 4 REMOVE EXISTING SURFACE STRIPS. EXTEND WIRING FROM EXISTING CEILING BOX TO NEW FIXTURE WITH SURFACE RACEWAY.
- 5 REMOVE EXISTING LIGHT FIXTURES, SWITCHES AND SURFACE RACEWAY. INSTALL BLANK BLANK COVERPLATE ON DEVICE BOXES NOT REUSED.
- 6 ROUTE WIRING THROUGH FURRED WALL AREA IN MEETING ROOM.
- 7 CEILING BEING DROPPED IN THIS AREA. REMOVE AND INSTALL EXISTING FIXTURE ON NEW CEILING.
- 8 REMOVE EXISTING COVE LIGHT AND REPLACE WITH FIXTURE TYPE S. CONNECT TO SWITCH AND CIRCUIT SERVING EXISTING. RELOCATE 1 SWITCH AS REQUIRED FOR WALL DEMOLITION.
- 9 REFER TO ARCHITECTURAL DRAWINGS FOR MOUNTING DETAILS ON TYPE E LIGHT FIXTURES.
- 10 ROUTE WIRING AS SURFACE RACEWAY ALONG WALL AT CEILING. CUT INTO WALL AND DROP WIRE TO NEW FIXTURE.
- 11 MOUNT SWITCHES IN LINE BELOW LIGHT FIXTURE. FISH WIRING UP IN WALL FROM SURFACE RACEWAY BOX AT FLOOR. CONTINUE WIRING IN WALL ABOVE LIGHT FIXTURE TO ELEVATION OF EXIT SIGN. MOUNT SURFACE BOX EXTING WALL AND EXTEND SURFACE RACEWAY TO NEW EXIT LIGHT.
- 12 REPLACE EXISTING LIGHT WITH NEW FIXTURE AND CONNECT TO NEW SWITCH. REMOVE EXISTING WIRING AND SWITCH. INSTALL BLANK COVERPLATE ON EXISTING SWITCH BOX.



LIGHTING PLAN
SCALE: 1/4" = 1'-0"
NORTH