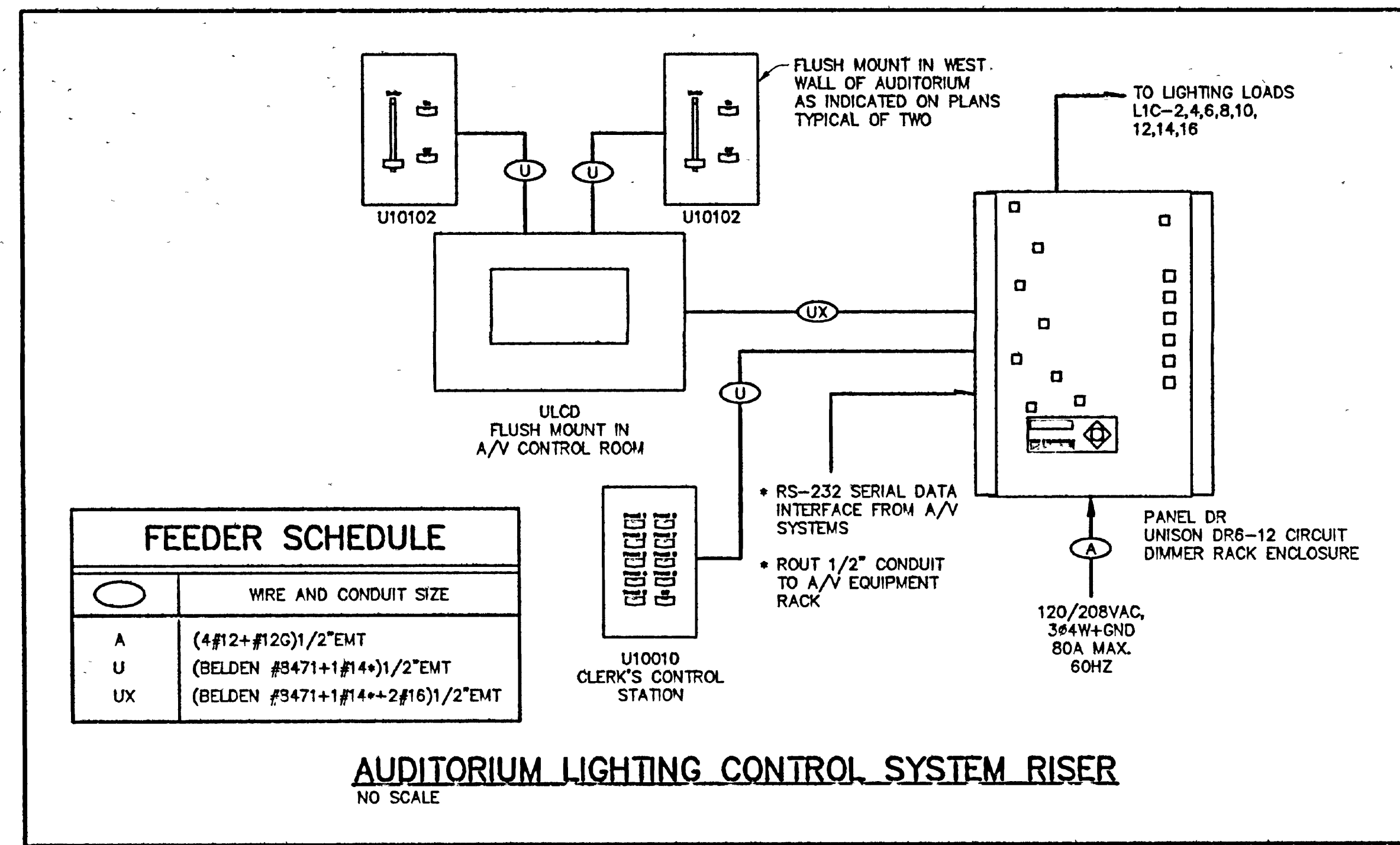


LIGHTING FIXTURE SCHEDULE				
D E S	MANUFACTURER CATALOG NUMBER	VOLTAGE MOUNTING # OF LAMPS	BALLAST CATALOG NUMBER LAMP TYPE LAMP CATALOG NUMBER	DESCRIPTION
A	LITHONIA 2943 OB 332 18LS 277 GEB10	277 CEILING RECESS 3	ELECTRONIC FLUORESCENT F032/835/ECO	23-3/4" W X 48" L X 8-15/16" H TROFFER WITH 3" 18 CELL NON RECESSED SPECULAR SILVER LOUVER, ELECTRONIC BALLAST & 3500K LAMPS.
A1	LITHONIA 2943 OB 332 18LS 277 GEB10	277 CEILING RECESS 3	(2) ELECTRONIC FLUORESCENT F032/835/ECO	SIMILAR TO TYPE "A" EXCEPT THIS FIXTURE SHALL CONTAIN 1 SINGLE LAMP BALLAST AND 1 2 LAMP BALLAST FOR MULTI-LEVEL CONTROL.
B	LITHONIA 2943 OB 232 18LS 277 GEB10	277 CEILING RECESS 2	ELECTRONIC FLUORESCENT F032/835/ECO	23-3/4" W X 48" L X 8-15/16" H TROFFER WITH 3" 18 CELL NON RECESSED SPECULAR SILVER LOUVER, ELECTRONIC BALLAST & 3500K LAMPS.
C	PRESCOLITE CFR828UEB-ST492A 277V	277 CEILING RECESS 2	ELECTRONIC COMPACT FLUORESCENT CP2600/E/835	8" DIA X 7-1/8" D RECESSED DOWNLIGHT WITH CLEAR ALZAK REFLECTOR AND WHITE TRIM, 3500K LAMPS AND ELECTRONIC BALLAST.
CI	PRESCOLITE CFR828UEB-ST492A 277V	277 CEILING RECESS 2	ELECTRONIC COMPACT FLUORESCENT CP2600/E/835	SIMILAR TO FIXTURE TYPE "C" EXCEPT WITH DIMMING BALLAST.
C2	PRESCOLITE CFR828UEB-ST492A EM 277V	277 CEILING RECESS 2	ELECTRONIC COMPACT FLUORESCENT CP2600/E/835	SIMILAR TO FIXTURE TYPE "C" EXCEPT WITH BATTERY BACKED EMERGENCY BALLAST.
D	LUMINIS CUSTOM FIXTURE ALLOW \$1280 EACH	120 24" PENDANT 3	ELECTRONIC COMPACT FLUORESCENT FT400L/835/RS	36" DIA X 5" H PENDANT MOUNTED BOWL WITH PERFORATED METAL SURROUNDED WHITE ACRYLIC DIFFUSER, ALUMINUM CROSS BAFFLES.
D1	LUMINIS CUSTOM FIXTURE ALLOW \$418 EACH	277 WALL 2	ELECTRONIC COMPACT FLUORESCENT FT400L/835/RS	14" W X 6" H X 8" D QUARTER SPHERE WITH PERFORATED METAL SHIELD, WHITE ACRYLIC DIFFUSER, AND ALUMINUM CROSS BAFFLES.
D2	LUMINIS CUSTOM FIXTURE ALLOW \$1790 EACH	277 PENDANT 4	ELECTRONIC COMPACT FLUORESCENT FT400L/835/RS	48" DIA X 5" H PENDANT MOUNTED BOWL WITH 36" PERFORATED METAL SURROUNDED BY 12" ACRYLIC DIFFUSER, ALUMINUM CROSS BLADES.
E	LITHONIA 2943 POL12125V 277 GEB10	277 WALL 8'-0" AFF 2	ELECTRONIC FLUORESCENT F032/835/ECO	4-5/8" W X 48" L X 4-9/16" H WALL BRACKET W/ TOP & BOTTOM ACRYLIC DIFFUSERS, 3500K LAMPS AND ELECTRONIC BALLAST.
E1	LITHONIA 2943 POL12125V 277 PS1400	277 WALL 8'-0" AFF 2	ELECTRONIC FLUORESCENT F032/835/ECO	SIMILAR TO TYPE "E" EXCEPT THIS FIXTURE SHALL CONTAIN A SINGLE LAMP BATTERY BACKED BALLAST CAPABLE OF 1400 LUMENS.
F	LITHONIA 26T 232 A12125 277 GEB10	277 RECESSED 2	ELECTRONIC FLUORESCENT F032/835/ECO	24" W X 48" L X 4-1/2" H LAY-IN TROFFER; 125 ACRYLIC PRISMATIC LENS; FLAT STL DR & 3500 K LAMPS & ELECTRONIC BALLAST.
F1	LITHONIA 26T 232 A12125 277 PS3000	277 RECESSED 2	ELECTRONIC FLUORESCENT F032/835/ECO	SIMILAR TO TYPE "F" EXCEPT THIS FIXTURE SHALL CONTAIN AN EMERGENCY BATTERY BACKED BALLAST CAPABLE OF 3000 LUMENS.
G	COOPER LIGHTING 7007 7700 C TRM-1	120 CEILING RECESS 1	NONE INCANDESCENT 150W A21	8" DIA X 11" H DOWNLIGHT WITH SEGULAR CLEAR ALZAK REFLECTOR, WHITE METAL TRIM RING, 150W LAMP.
H	LITHONIA C 232 277 GEB10	277 CEILING SURF 2	ELECTRONIC FLUORESCENT F032/835/ECO	4-3/16" W X 48" L X 3-3/4" H STRIP WITH ELECTRONIC BALLAST AND 3500K LAMPS.
H1	LITHONIA C 232 120 GEB10	120 CEILING SURF 2	ELECTRONIC FLUORESCENT F032/835/ECO	SIMILAR TO FIXTURE TYPE "H" EXCEPT 120V.
K	ARTMEDE 813028	12 CEILING RECESS 1	NONE HALOGEN INCANDESCENT 50W/18/T/FL/40	4" DIA X 5/8"-RECESSED EYEBALL (1" PROTRUSION FROM CEILING) WITH WHITE FINISH, WP16 40 DEGREE FLOOD LAMP.
K1	ARTMEDE 813028	12 CEILING RECESS 1	NONE HALOGEN INCANDESCENT 50W/18/T/FL/40	SIMILAR TO FIXTURE TYPE "K" EXCEPT WITH WP16 60 DEGREE WIDE FLOOD LAMP.
K2	ARTMEDE 813028	12 CEILING RECESS 1	NONE HALOGEN INCANDESCENT 50W/18/T/FL/25	SIMILAR TO FIXTURE TYPE "K" EXCEPT WITH WP16 25 DEGREE NARROW FLOOD LAMP.
L	LITHONIA 2943 OB 2 CF40 9ND 277 GEB10	277 CEILING RECESS 2	ELECTRONIC FLUORESCENT FT400L/835/RS	24" SQ X 3-11/16" H LAY-IN TROFFER WITH 125" ACRYLIC PRISMATIC LENS, FLAT STEEL DOOR, 3500K TB LAMPS & ELECTRONIC BALLAST
L1	LITHONIA 2943 OB 2 CF40 9ND 277 GEB10	277 RECESSED 2	ELECTRONIC FLUORESCENT FT400L/835/RS	SIMILAR TO TYPE "L" EXCEPT THIS FIXTURE SHALL CONTAIN A SINGLE LAMP BATTERY BACKED EMERGENCY BALLAST.
LR	NATIONAL SPECIAL LIGHTING NL SERIES	120 SURFACE 0	NONE HALOGEN STANDARD WITH FIXTURE	1/2" DIA LIGHT ROPE, 120 VOLT, 1" BULB SPACING, CLEAR BULBS, TRIM ROPE TO LENGTH ON SITE. PROVIDE REQUIRED ACCESSORIES.
M	LITHONIA SP F 232 FW A12125 277 GEB10	277 CEILING RECESS 2	ELECTRONIC FLUORESCENT F032/835/ECO	12" W X 48" L X 4-7/8" H FLANGED TROFFER W/WHITE PAINTED ALUMINUM DOOR, 125" LENS ELECTRONIC BALLAST AND 3500K LAMPS
M1	LITHONIA SP F 232 FW A12- A12125 277 GEB10	277 CEILING RECESS 2	ELECTRONIC FLUORESCENT F032/835/ECO	SIMILAR TO TYPE "M" EXCEPT THIS FIXTURE SHALL CONTAIN A SINGLE LAMP BATTERY BACKED BALLAST CAPABLE OF 2250 LUMENS.
N	LITHONIA SRT F 232 FW A12125V 277 GEB	277 CEILING RECESS 2	ELECTRONIC FLUORESCENT F032/835/ECO	12" W X 48" L X 4-7/8" H FLANGED TROFFER W/WHITE PAINTED ALUMINUM DOOR, 125" LENS ELECTRONIC BALLAST, 3500K LAMPS, WET LOC.
O	PRESCOLITE CFR828UEB-B492 277V	277 CEILING RECESS 2	ELECTRONIC COMPACT FLUORESCENT CP2600/E/835	8" DIA X 7-1/8" D RECESSED DOWNLIGHT WITH STEPPED BLACK BAFFLE AND WHITE TRIM, 3500K LAMPS AND ELECTRONIC BALLAST.
O1	PRESCOLITE CFR828UEBDM- B492 EM 277V	277 CEILING RECESS 2	ELECTRONIC COMPACT FLUORESCENT CP2600/E/835	SIMILAR TO FIXTURE TYPE "O" EXCEPT WITH EMERGENCY BALLAST. W/RE 24 HOUR (HL) OPERATION.
O2	PRESCOLITE CFR828UEBDM- B492 RF 277V	277 CEILING RECESS 2	ELECTRONIC COMPACT FLUORESCENT CP2600/E/835	SIMILAR TO FIXTURE TYPE "O" EXCEPT WITH DIMMING BALLAST AND RADIO INTERFERENCE FILTER.
P	ULTECONTROL 18-55478- ELB10-277	277 PENDANT 2	ELECTRONIC FLUORESCENT F032/835/ECO	13" W X 5 1/2" X 3-1/4" H PENDANT FIXTURE, WHITE STEEL BODY W/PERFORATED SIDES, AIR-CRAFT CABLE PENDANTS 4" O.C., 3500K LMPs.
P1	ULTECONTROL 18-55478- ELB10-277	277 18" PENDANT 4	ELECTRONIC DIMMING FLUORESCENT F032/835/ECO	SIMILAR TO TYPE "P" EXCEPT THIS FIXTURE IS 10" LONG WITH 4 LAMPS. TWO CABLE PENDANTS PER FIXTURE.
Q	LITHONIA 1 FB FBW2 2/260T 277 GEB	277 CEILING RECESS 2	ELECTRONIC COMPACT FLUORESCENT CP2600/E/835	8" DIA X 7-1/8" D RECESSED WALL WASH WITH BLACK BAFFLE AND WHITE EYELID, 3500K LAMPS AND ELECTRONIC BALLAST.
R	JUNO G2405-14B	120 CEILING RECESS 1	NONE INCANDESCENT	4-1/2" DIA X 5-1/4" H SMALL APERTURE DOWNLIGHT WITH WHITE TRIM AND BLACK CROCKET BAFFLE.
S	STAFF CLUB-20FT32W/G20 52-9930-FAC-C-	277 CEILING RECESS 2	STANDARD WITH FIXTURE COMPACT FLUORESCENT CP20T/E/IN/835	9-7/8" DIA X 10-1/4" H DOWNLIGHT WITH FACETED REFLECTOR, AND ROUND, CENTER SANDBLASTED LIME GREEN GLASS ACCENT.
T	ELLIPTIPAR M135-070G-W-P1-B-2810	120 WALL 15'-0" CL	STANDARD WITH FIXTURE METAL HALIDE MP50/C/U/AFD	13" W X 7-3/4" D X 6-1/8" H CYLINDRICAL WALL MOUNT; PERFORATED ALU HOUSING, CLEAR CRACKLED ALU REFLECTOR, REMOTE BALLAST.
U	PRUDENTIAL P-15-11-04-277	277 SURFACE 1	ELECTRONIC FLUORESCENT FP28/835	48-3/8" L X 1-7/8" W X 2-3/8" H STRIP WITH WHITE STEEL BODY, 3500K TS LAMPS, AND ELECTRONIC BALLASTS.
UC	LITHONIA UC 24 277 LPIW	277 UNDER CABINET 1	ELECTRONIC FLUORESCENT F032/835/ECO	24-1/2" L X 5" W X 1-3/16" H UNDER CABINET LIGHT WITH WHITE SHATTER RESISTANT LENS AND WARM WHITE LAMPS.
V	CAPRI MHLR10/50/R14P/V2F	277 CEILING RECESS 1	STANDARD WITH FIXTURE METAL HALIDE MP50/C/U/AFD	8" OD X 7-1/2" H RECESSED DOWNLIGHT WITH RECESSED FRESHEN LENS AND STEEL FRAME. DAMP LOCATION LABEL.
W	HYDRELL 4842-3	12 UNDERWATER 1	NONE INCANDESCENT Q71M18/E/FL40 (G.E.)	6-1/4" DIA X 6-7/8" H FIXTURE WITH CLEAR GLASS LENS, GASKETED, LABELED FOR UNDER WATER USE.
X	LITHONIA AH 50MH 7AR 277	277 CEILING RECESS 1	STANDARD WITH FIXTURE METAL HALIDE MP50/C/U/AFD	7" DIA X 10-5/8" H DOWNLIGHT WITH CLEAR SPECULAR REFLECTOR.
Y	VSA C85120-05-10F26-RU-277	277 WALL SURFACE 1	ELECTRONIC COMPACT FLUORESCENT CP2600/E/835	14-1/4" H X 8" W X 4" D FIXTURE WITH SOLID POLISHED COPPER FACE AND TRIM, 3500K LAMPS AND ELECTRONIC BALLAST.
Z1	A.A.L. SPI ND-5 100MH COP	277 POLE 1	STANDARD WITH FIXTURE METAL HALIDE MP100/C/U/AFD	31 5/8" DIA X 29 1/2" H INDIRECT POST TOP WITH CLEAR GLASS LENS, COPPER HOOD, TYPE V, BODY COLOR BY ARCH. POLE: A.A.L. #SP2
Z2	A.A.L. SP2 ND-3 70MH COP	277 WALL 1	STANDARD WITH FIXTURE METAL HALIDE MP70/C/U/AFD	23 5/8" DIA X 23 1/2" H INDIRECT WALL MOUNTING TYPE "Z1" EXCEPT WALL BRACKET MOUNT, TYPE III WALL BRACKET: A.A.L. #AMW2
Z3	A.A.L. SPB 50MH COP	277 BOLLARD 1	STANDARD WITH FIXTURE METAL HALIDE MP50/C/U/AFD	42" TALL X 6" DIA. BOLLARD TO MATCH TYPE "Z1". COPPER HOOD. BODY COLOR TO BE SELECTED BY ARCHITECT.
Z4	RIJLD WQH07407-D-M-N	277 CEILING SURF. 1	STANDARD WITH FIXTURE METAL HALIDE MP70/C/U/AFD	12 5/8" X 5" D PARKING STRUCTURE LUMINAIRE WITH ALUMINUM HOUSING, IMPACT RESISTANT LENS.
Z5	HYDREL 7100A-M450/277/ TS/MK	277 WALL 1	STANDARD WITH FIXTURE METAL HALIDE MP50/C/U/AFD	15-3/4" W X 9-1/4" H X 8-3/4" D SPOT LIGHT, DE-CAST ALUMINUM HOUSING, TEMPERED GLASS LENS, INBUCKLE MOUNTING.
Z6	KM LTV10 SP 70M/277 H510	277 FLUSH IN GRADE 1	STANDARD WITH FIXTURE METAL HALIDE MP70/U/AFD	12-3/4" DIA X 16-1/4" H SPOT LIGHT MOUNTED IN GRADE, FIBERGLASS BODY, GASKETED GLASS LENS W/ BRONZE RING HALF SHIELD.
Z7	KM LTV10 NF 70M/277 H510	277 FLUSH IN GRADE 1	STANDARD WITH FIXTURE METAL HALIDE MP70/U/AFD	SIMILAR TO FIXTURE TYPE "Z6" EXCEPT WITH NARROW FLOOD DISTRIBUTION.
Z8	KM LTV52 WW 50M/277 H550	277 FLUSH IN GRADE 1	STANDARD WITH FIXTURE METAL HALIDE MP50/U/AFD	SIMILAR TO FIXTURE TYPE "Z6" EXCEPT WITH WALL WASH DISTRIBUTION.
Z9	HYDREL 7100A-M475/277/ TS/MK	277 STANCHION 1	STANDARD WITH FIXTURE METAL HALIDE MP100/C/U/AFD	SIMILAR TO FIXTURE TYPE "Z5" EXCEPT WITH WIDE FLOOD DISTRIBUTION AND 18" STANCHION MOUNTING.
3	LITHONIA LRP 1 GC 120/277 FLN	277 SURFACE 1	STANDARD WITH FIXTURE LED	EXIT, EDOGLIT, SINGLE FACE, GREEN LETTERS ON CLEAR FACE, BRUSHED ALUMINUM MOUNTING CANOPY, ARROWS & NICAD BATTERY.
4	LITHONIA LRP 2 GR 120/277 ELN	277 SURFACE 2	STANDARD WITH FIXTURE LED	EXIT, EDOGLIT, DOUBLE FACE, GREEN LETTERS ON IMPROVED FACE, BRUSHED ALUMINUM MOUNTING CANOPY, ARROWS & NICAD BATTERY.

FLAG NOTES THIS SHEET.

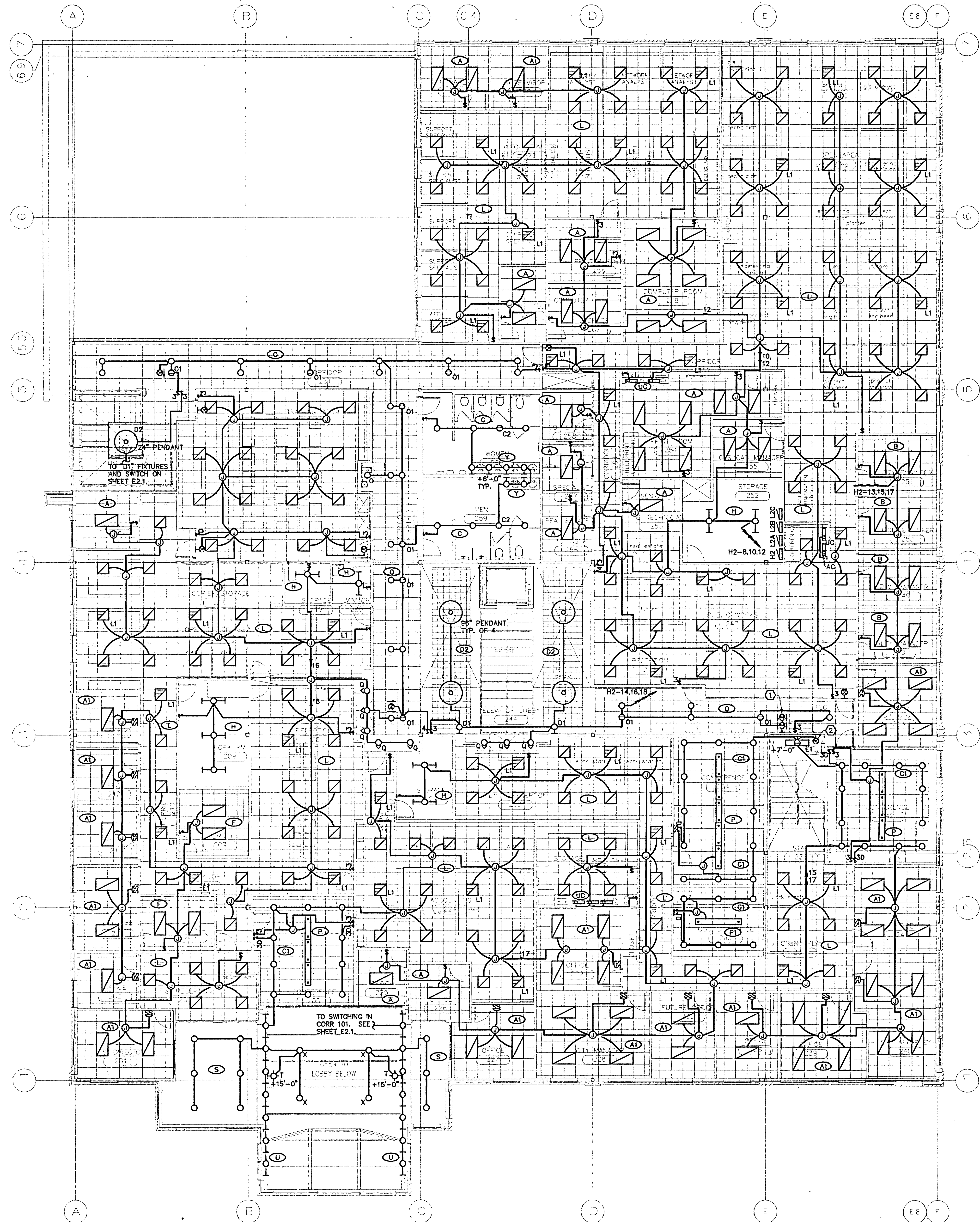
- DIMMING CONTROL MASTER STATION. REFER TO RISER DIAGRAM ON SHEET E2.2.
- MOUNT FIXTURE ON "ROOF" SURFACE OF AUDITORIUM SOFFIT APPROXIMATELY 8" WEST OF THE WALL.
- AUDITORIUM LIGHTING CONTROL PANEL. LITHONIA SEQUEL SYSTEM OR APPROVED EQUIVALENT.
- EXTEND BRANCH CIRCUIT TO SERVICE RECEPTACLE IN ELEVATOR MACHINE ROOM #143. SEE SHEET E3.1.
- MOUNT OUTLET BOX IN BOTTOM OF COVE (9" AFF) FOR ACCENT LIGHTING. PROVIDE 30' OF LIGHT ROPE, FIXTURE TYPE "LR", LAID ALONG THE LENGTH OF THE COVE. SECURE LIGHT ROPE AT 5' INTERVALS. REFER TO AUDITORIUM ELEVATIONS, SHEET A5-5, AND AUDITORIUM WALL DETAILS, SHEET A5-7.
- EXTEND BRANCH CIRCUIT TO EXTERIOR LIGHT FIXTURES SHOWN ON SHEET E1.1.
- FIXTURES ARE TO BE AIMED AT THE PODIUM IN FRONT OF THE DIAS IN SUCH A MANNER THAT THE PODIUM AND THE SPEAKER ARE ILLUMINATED.
- FIXTURE IS TO BE AIMED AT THE DOCUMENT TABLE TO ILLUMINATE ANY DOCUMENT ON THE TABLE.



AUDITORIUM #115 DIMMER RACK (LCP) SCHEDULE

ZONE	ZONE DESCRIPTION	DIMMER RACK CIRCUIT	LOAD TYP	PHASE A LOAD (W)	PHASE B LOAD (W)	PHASE C LOAD (W)
1	NW PARTITIONED AREA	DR-1	INCANDESCENT	1200		
2	SW PARTITIONED AREA	DR-2	INCANDESCENT	900		
3	CITY SEAL WALL WASH	DR-3	INCANDESCENT		100	
4	SOUTH CENTRAL	DR-4	INCANDESCENT		1500	
5	NORTH CENTRAL	DR-5	INCANDESCENT			1500
6	BEHIND DIAS	DR-6	INCANDESCENT			900
7	SPARE	DR-7	INCANDESCENT	0		
8	DOCUMENT TABLE SPOT	DR-8	INCANDESCENT	50		
9	SPARE	DR-9	INCANDESCENT		0	
10	PODIUM FLOODS	DR-10	INCANDESCENT		100	
11	SPARE	DR-11	INCANDESCENT			0
12	SPARE	DR-12	INCANDESCENT			0
TOTAL LOADS				2150	1700	2400

- FLAG NOTES THIS SHEET:**
1. FIXTURE INDICATED IS SIMILAR TO 2-SIDED EXIT SIGNAGE EXCEPT WITH SPECIAL WORDING. SIGN IS TO READ "AREA OF RESCUE ASSISTANCE" WITH HANDICAP SYMBOL. LITHONIA CATALOG #RP 2 GR DA 120/277 EL N.
 2. FIXTURE INDICATED IS SIMILAR TO 1-SIDED EXIT SIGNAGE EXCEPT WITH SPECIAL WORDING. SIGN IS TO READ "AREA OF RESCUE ASSISTANCE" WITH HANDICAP SYMBOL. LITHONIA CATALOG #RP 1 CC 120/277 EL N.



Fawhaus Architects, Inc.
115 N. 5th Street, Suite 410
Grand Junction, CO 81501
(970) 243-3122 • fax (970) 243-1157 • e-mail: fawhaus@aol.com

MKK CONSULTING ENGINEERS, INC.
Mechanical, Electrical & Energy Consultants
827 Road Avenue
Grand Junction, Colorado 81501
(970) 243-5177 • fax (970) 243-4400

CITY HALL
CITY OF GRAND JUNCTION
250 North Fifth Street
Grand Junction, Colorado

SECOND FLOOR
LIGHTING PLAN

Project No: 9951
Date: 9/17/99
Drawn by: DDD
Revisions:

Sheet No:
E2.2

