



Purchasing Division

ADDENDUM NO. 1

DATE: April 13, 2023
FROM: City of Grand Junction Purchasing Division
TO: All Offerors
RE: 2023 Sewer Replacement – 27 Road – Unawep Ave to B ¾ Road IFB-5218-23-DD

Offerors responding to the above referenced solicitation are hereby instructed that the requirements have been clarified, modified, superseded, and supplemented as to this date as hereinafter described.

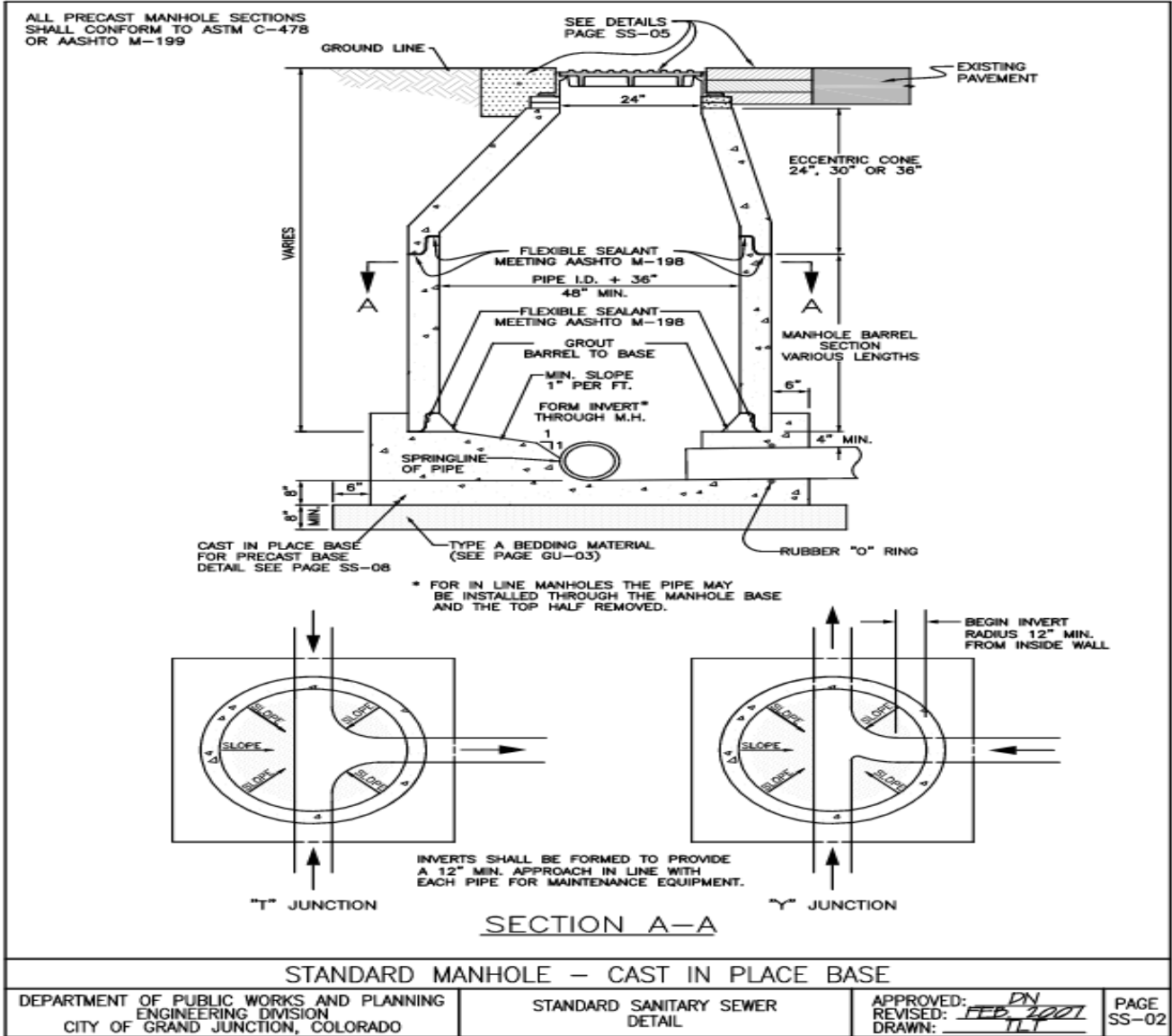
Please make note of the following clarifications:

- Question:** I see in the plans that they are calling out 48" Diameter manhole for the 15" PVC sewer pipe. According to your City Standards the biggest sewer pipe allowed to be installed in a 48" Manhole is 12" Pipe per Detail S02. Just wanted to let you know that following the City standards the manholes should be 60" Diameter sewer manholes and not 48". Please advise.

Answer: Manholes on 27 Road sanitary sewer replacement need to be all Ø60" per SS-02. See below and attached/linked revised Bid Schedule and Construction Drawings.

[Revised Construction Drawings for Addendum 1](#)

[Revised Bid Schedule for Addendum 1](#)



The original solicitation for the project noted above is amended as noted.

All other conditions of subject remain the same.

Respectfully,

Dolly Daniels

Dolly Daniels, Senior Buyer
City of Grand Junction, Colorado

Addendum No. 1

Appendix C

Bid Schedule 2023 Sewer Replacements – 27 Road – UnawEEP Avenue to B ³/₄ Road

Contractor: _____

Item No.	CDOT, City Ref.	Description	Quantity	Units	Unit Price	Total Price
1	104.2	Ø4" PVC Sanitary Sewer Service Connection to edge of easement (See Std Detail SS-07) (Cleanout not installed)	12	EA	\$ _____	\$ _____
2	108.2	15" Gravity Sewer Pipe (SDR-35 PVC) (Includes cost of connection to the existing sewer pipe and Type A Bedding and Haunching Material and Backfill of Trench with Class 3 Imported Trench Backfill Material)	999	LF	\$ _____	\$ _____
3	108.2	6" Irrigation pipe (PVC PIP) includes backfill of trench with native materials meeting 103.16 earth backfill materials. Pipe is not to be bedded with Type A material, includes connection at ends.	160	LF	\$ _____	\$ _____
4	108.2	8" Irrigation pipe (PVC PIP) includes backfill of trench with native materials meeting 103.16 earth backfill materials. Pipe is not to be bedded with Type A material, includes connections at ends.	135	LF	\$ _____	\$ _____
5	108.2	15" Irrigation pipe (PVC PIP) includes backfill of trench with native materials meeting 103.16 earth backfill materials. Pipe is not to be bedded with Type A material, includes connections at ends.	52	LF	\$ _____	\$ _____

6	108.3	15" x 4" Sewer Service Tap, Full Body WYE (See St. Detail SS-06)	12	EA	\$ _____	\$ _____
7	108.5	Manhole Interior Corrosion Protection (100 mils Dry Film Thickness, min.) (includes manhole surface preparation and filling in bug holes and imperfections prior to coating)	58	Vert. Ft.	\$ _____	\$ _____
8	108.5	Sewer Basic Manhole (60" I.D.) (Includes connection of adjacent sewer line, forming inverts and adjusting to final grade. See City Std. Detail SS-02) (Includes Type A Bedding and Haunching Material and Backfill of Trench with Class 3 Imported Trench Backfill Material)	4	EA	\$ _____	\$ _____
9	108.5	Manhole Barrel Section (D>5') (60" I.D.)	38	Vert. Ft.	\$ _____	\$ _____
10	202	Removal of Existing Pipe (Size & type as shown on plans)	999	LF	\$ _____	\$ _____
11	202	Removal of Asphalt Mat (Full Depth)	1123	SY	\$ _____	\$ _____
12	202	Asphalt Removal (Planing) (Thickness Varies)	451	SY	\$ _____	\$ _____
13	202	Removal of Manhole (Price to include plugging existing abandoned pipes and removal and disposal of concrete sections)	4	EA	\$ _____	\$ _____
14	208	Storm Drain Inlet Protection (Silt-Sack Style or Approved Equal) (Includes Maintenance & Removal of Debris, & Removal of Inlet Protection)	10	EA	\$ _____	\$ _____
15	208	Erosion Control Log	400	LF	\$ _____	\$ _____
16	210	Reset Fence (Height and Material Shown on Plan)	60	LF	\$ _____	\$ _____

17	210	Reset/Repair Sprinkler System (Complete in Place)	1	Lump Sum	\$ _____	\$ _____
18	210	Reset Irrigation Pipe (PVC Irrigation Pipe) (Includes pipe, fittings, equipment, materials, and labor to relocate irrigation pipe)	1	Lump Sum	\$ _____	\$ _____
19	210	Reset Mailbox to new 4" x 4" Treated Post	3	LF	\$ _____	\$ _____
20	211	Dewatering (Includes acquiring a CDPHE Dewatering Permit and adhering to the discharge requirements of the State Permit) (if needed)	1	Lump Sum	\$ _____	\$ _____
21	304	Aggregate Base Course (Class 6) (12" thick)	1123	SY	\$ _____	\$ _____
22	304	Aggregate Base Course (Class 6) (6" thick)	113	SY	\$ _____	\$ _____
23	401	Hot Bituminous Pavement (2" Thick) (Grading SX, Binder Grade PG 64-22) (GYR. = 75) (One 2" Lift Bottom Mat)	1810	SY	\$ _____	\$ _____
24	401	Hot Bituminous Pavement (Patching) (2" Thick) (Grading SX, Binder Grade PG 64-22, GYR.=75) (One 2" Lift Top Mat) (T-Top Patch) (See City Std. Detail GU-03)	1123	SY	\$ _____	\$ _____
25	620	Portable Sanitary Facility	1	Lump Sum	\$ _____	\$ _____
26	625	Construction Surveying (Includes As-Built Drawings)	1	Lump Sum	\$ _____	\$ _____
27	626	Mobilization	1	Lump Sum	\$ _____	\$ _____
28	630	Traffic Control (Complete in Place)	1	Lump Sum	\$ _____	\$ _____

29	Pump	Bypass Sewage Pumping (As deemed necessary by City or Contractor)	1	Lump Sum	\$ _____	\$ _____
MCR		Minor Contract Revisions	---	---	---	\$ 100,000.00

Total Bid Amount \$ _____

Bid Amount: _____ **Dollars**