

ROOFTOP A/C UNIT SCHEDULE

DESIG.	AREA SERVED	CFM @ 4850FT	EXT S.P. @ S.L.	MAX. FLA.	COMPRESSOR			CONDENSER			EVAP FAN			UNIT	MANUFACTURE & MODEL NO.	HTG. INPUT MBH @ S.L.	COOLING CAP. MBH.	NOTES				
					NO.	RLA	#	VOLT	NO.	RLA	#	VOLT	RLA						#	VOLT	HP	#
AC-1	OFFICES	2200	5"	32.6	1	18.6	3	208	1	2.7	1	208	6.6	1	208	.75	3	208	TRANE YCDO60C3L	90	57.3	1
AC-2	SHOP AREA	900	5"	18.6	1	18.6	3	208	1	2.0	1	208	2.4	1	208	.33	3	208	TRANE YCDO36C3L	80	32.2	1

NOTES:
 1. COOLING BASED ON 80°DB/61°WB ENTERING COIL AND 95° AMBIENT. PROVIDE WITH ROOF CURB, DOWNFLOW ECONOMIZER, BAROMETRIC RELIEF DAMPER, COIL GUARDS, AND 7 DAY PROGRAMMABLE THERMOSTAT. PROVIDE LEVELING BASE UNDER FACTORY CURB.

EXHAUST FAN SCHEDULE

DESIG	CFM	S.P.	DIA	RPM	WATTS	#	VOLT	MANUFACTURER & MODEL NUMBER	MOUNTING	POWERED BY	NOTES
EF-1	1870	25"	16"	1250	1/4hp	1	120	GREENHECK GB-180	ROOF	MANUAL	1
EF-2	903	25"	12"	1550	1/4hp	1	120	GREENHECK GB-120	ROOF	MANUAL	1
EF-3	74	25"	--	1500	40	1	120	GREENHECK SP-6	CEILING	LIGHT SWITCH	2
EF-4	74	25"	--	1500	40	1	120	GREENHECK SP-6	CEILING	LIGHT SWITCH	2

NOTES:
 1. PROVIDE WITH ROOF CURB, BACKDRAFT DAMPER.
 2. PROVIDE WITH RJ ROOF CAP, SOLID STATE SPEED CONTROLLER.

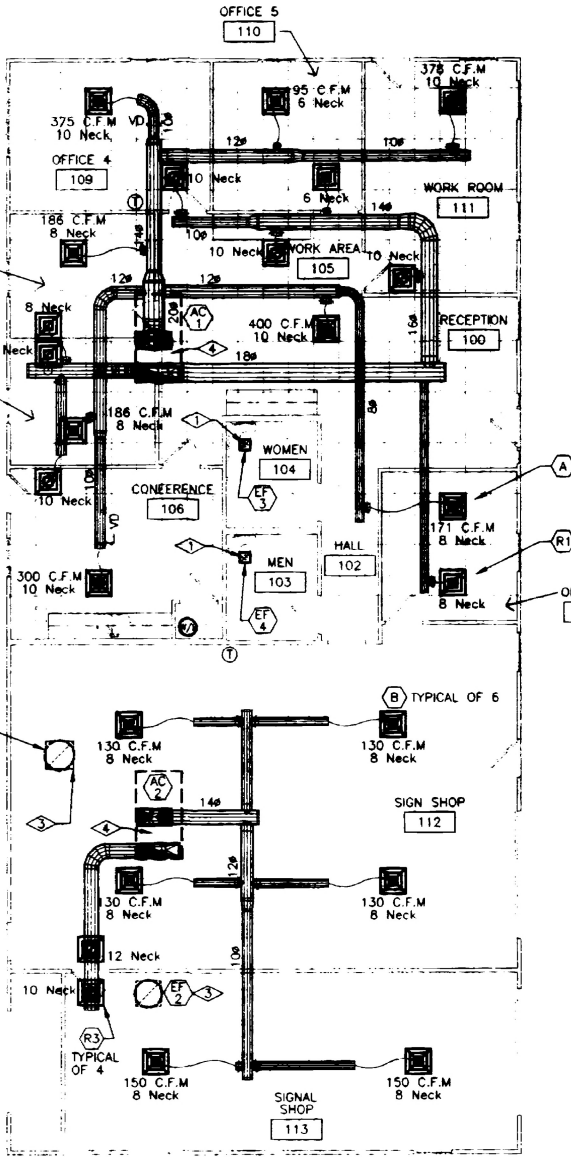
AIR DEVICE SCHEDULE

DESIG.	TYPE OF INSTALLATION	MANUFACTURER & MODEL NUMBER	CONNECTION SIZE	ACCESSORIES	PANEL OR FACE SIZE	NOTES
A	LAY-IN	TITUS MODEL TMS	AS SHOWN	---	24" x 24"	1
B	SURFACE	TITUS MODEL TMS	AS SHOWN	---	24" x 24"	1
R1	LAY-IN	TITUS MODEL 50F	AS SHOWN	---	24" x 24"	1
R2	SURFACE	TITUS MODEL 50F	AS SHOWN	---	24" x 24"	1

NOTES:
 1. WHITE FINISH.

SYMBOL LEGEND

—	CW DOMESTIC COLD WATER	⊕	THERMOSTAT
—	HW DOMESTIC HOT WATER	⊙	UNIVERSAL GAUGE TAPPING
—	S SANITARY SEWER	⊕	POINT OF CONNECTION NEW TO EXISTING
— HS —	HEATING WATER SUPPLY	V.T.R.	VENT THRU ROOF
— HR —	HEATING WATER RETURN	⊙	FIRE DAMPER
— CWS —	CHILLED WATER SUPPLY	⊙	COMBINATION SMOKE/FIRE DAMPER
— CWR —	CHILLED WATER RETURN	⊕	TURNING VANES—SHOWN IN 90° ELBOW
---	DOMESTIC HOT WATER RECIRC	⊕	FLEXIBLE CONNECTION
---	PLUMBING VENT	⊕	MANUAL VOLUME DAMPER
— G —	NATURAL GAS	— RL —	RAIN LEADER
⊕	GATE VALVE	— —	PIPE UNION
⊕	BALL VALVE	— X —	PIPE ANCHOR
⊕	AUTOMATIC FLOW CONTROL VALVE	— — ⊕	CLEAN-OUT
⊕	STRAINER	— C —	CONDENSATE LINE
⊕	TEMPERATURE CONTROL VALVE	⊕	THERMOMETER
⊕	PRESSURE RELIEF VALVE	— D —	DRAIN LINE
⊕	CHECK VALVE		



- FLAG NOTES:**
- ⊕ EXHAUST UP TO ROOF WITH 4" DUCT TO GREENHECK MODEL RJ PITCHED ROOF CAP.
 - ⊕ DUCT DOWN FROM EF-1 TO EXHAUST GRILLE WITH 18-1/2" x 18-1/2" DUCT.
 - ⊕ DUCT DOWN FROM EF-2 TO EXHAUST GRILLE WITH 14-1/2" x 14-1/2" DUCT.
 - ⊕ 32" x 15" SUPPLY & 38" x 12" RETURN DUCT DOWN THROUGH ROOF OPENING

MECHANICAL PLAN
 SCALE: 1/8" = 1'-0"

OFFICE BUILDING
TRANSPORTATION ENGINEERING

GCS16-030-90-3Y

S/N: 5600K 0431

HEATING DATA

INPUT: 90,000 BTUH MAX N/A BTUH MIN OUTPUT: 72,000 BTUH
 MANIFOLD PRESSURE: 3.5 IN. W.C.
 GAS SUPPLY LINE PRESS: 10.5 IN. W.C. MAX 4.5 IN. W.C. MIN.
 MAXIMUM OUTLET AIR TEMPERATURE: 170 °F
 TEMPERATURE RISE FROM: 40-70 °F
 MAX. STATIC PRESSURE: 0.5 IN. W.C. FOR ALTITUDES TO: 0-4500 FT.
 MANUFACTURER RECOMMENDED ORIFICE SIZE: 1.75mm
 SEE INSTALLATION INSTRUCTIONS FOR MORE INFORMATION.

CHAUFFAGE

POISSANCE CALORIFIQUE BRUTE MAX: 90,000 BTUH MIN: N/A BTUH
 POISSANCE CALORIFIQUE NOMINALE: 72,000 BTUH
 PRESS A LA TUBULURE D'ALIMENTATION: 3.5 POUCE COLONNE/EAU
 PRESSION ENTREE: MIN 4.5 MAX 10.5 POUCE COLONNE/EAU
 TEMP. MAXIMALE D'AIR DE SORTIE: 170 °F
 AUGMENTATION DE TEMPERATURE: 40-70 °F
 PRESSION STATIQUE MAX: 0.5 POUCE COLONNE/EAU POUR ALTITUDE JUSQU'A 0-4500 PIEDS.
 ORIFICE RECOMMANDE PAR MANUFACTURIER: 1.75mm
 CONSULTEZ LE MANUEL D'INSTALLATION POUR DE PLUS AMPLES DETAILS.

COOLING DATA / CLIMATISATION

ELECTRICAL RATING / CIRCUIT ELECTRIQUE

CONTAINS/CONTIENT DU: HCFC-22 TO BE OPERATED AT/ FAIRE FONCTIONNER
 FACTORY CHARGE/CHARGE A L'USINE VOLTS 208/230 HERTZ 60 PHASE 3
 EACH COMPRESSOR SYSTEM/ CONDUCTEURS AT 75°C MIN 197 VOLTS MAX 253 VOLTS
 CHAQUE ENSEMBLE DE COMPRESSEUR (187°F) AMPACITY MIN. UNIT 288/230V CKT.
 TOTAL 4 LBS 6 OZS MIN. CKT AMPACITY 18
 MIN DESIGN PRESSURE/PRESSION: 278 HIGH/HAUTE PSIG MAX FUSE OR CKT 25
 144 LOW/BASSE PSIG (BKR. (SHOCK PER NEC) FUSIBLE/CIRCUIT)

MOTOR RATINGS / MOTEURS ELECTRIQUES

RLA	HP	PH	FLA	LRA
EA	10.3	3		77
EA		1/2	3.9	
EA		1/8	1.1	
EA		1	.7	
EA		NONE/ AUCUN		

FORCED AIR FURNACE WITH COOLING. FOR OUTDOOR INSTALLATION ONLY.
 CLIMATISEUR/CHAUFFAGE. INSTALLATION A L'EXTERIEUR SEULEMENT.

MINIMUM AMBIENT TEMPERATURE IN WHICH UNIT MAY BE OPERATED/
 TEMPERATURE MINIMALE A LAQUELLE L'UNITE PEUT OPERER:
 □ -45 °F WITHOUT VESTIBULE NTR. / -45°C SANS CHAUFFE-VESTIBULE
 □ -65 °F WITH VESTIBULE NTR. KIT T22488 / -52°C AVEC CHAUFFE-VESTIBULE ENSEMBLE T22488
 MIN CLEARANCES TO COMBUSTIBLE CONSTRUCTION (IN.):
 DEGAGEMENT MIN ENTRE LES CONSTRUCTIONS COMBUSTIBLES. REAR/ARRIERE: 12,
 FRONT/DEVANT: 36, LEFT/GAUCHE: 36, RIGHT/DROIT: 36,
 TOP: UNOBSTRUCTED/DESSUS: SANS OBSTRUCTION

FOR INSTALLATION ON COMBUSTIBLE FLOORING AND CLASS A, CLASS B OR CLASS C ROOFING
 MATERIALS WITH HORIZONTAL DISCHARGE OR BOTTOM DISCHARGE WHEN INSTALLED ON
 BASE NO. RMF18-41. FOR INSTALLATION ON NONCOMBUSTIBLE FLOOR ONLY WITH BOTTOM
 DISCHARGE, WITHOUT RMF18-41. USE MODEL & SERIAL NUMBER WHEN ORDERING REPAIR PARTS.
 POUR INSTALLATION SUR UNE BASE INFLAMMABLE OU SUR UN TOIT DE CLASSE A, B OU C, POUR SORTIE
 D'AIR HORIZONTALE OU VERS LE BAS AVEC L'UTILISATION D'UN CADRE DE MONTAGE RMF18-41.
 POUR INSTALLATION SUR UNE BASE NON INFLAMMABLE AVEC SORTIE D'AIR VERS LE BAS, SANS CADRE
 DE MONTAGE, FOURNEZ MODELE ET NUMERO DE SERIE LORSQU' VOUS COMMANDEZ DES PIECES.
 UNIT EQUIPPED FOR NATURAL GAS. A CONVERSION KIT AS SUPPLIED BY THE
 MANUFACTURER, SHALL BE USED TO CONVERT THIS UNIT TO LIPROPANE.
 APPAREIL MONOBLOC UTILISATION AVEC GAZ NATUREL. UNE THOUCHE DE CONVERSION
 FOURNIE PAR LE FABRICANT DOIT ETRE UTILISEE POUR UTILISATION AVEC LIPROPANE.

CAN/CSA 2.2-88B
 AND Z21.47-05A-2.2-1990 CENTRAL FURN
 F8119270





9-1041AY

M/N: GCS16-060-120-21

S/N: 5600K 04274

HEATING DATA

INPUT: 120,000 BTUH MAX. N/A BTUH MIN. OUTPUT: 96,000 BTUH
MANIFOLD PRESSURE: 3.5 IN. W.C.
GAS SUPPLY LINE PRESS: 13.5 IN. W.C. MAX. 4.5 IN. W.C. MIN.
MAXIMUM OUTLET AIR TEMPERATURE: 170 °F
TEMPERATURE RISE FROM: 40-70 °F
MAX. STATIC PRESSURE: 0.5 IN. W.C. FOR ALTITUDES TO: 0-4500 FT.
MANUFACTURER RECOMMENDED DRIFICE SIZE: 40 DMS.
SEE INSTALLATION INSTRUCTIONS FOR MORE INFORMATION.

CHAUFFAGE

POISSANCE CALORIFIQUE BRUTE MAX: 120,000 BTUH MIN: N/A BTUH
POISSANCE CALORIFIQUE NOMINALE: 96,000 BTUH
PRESS A LA TUBULURE D'ALIMENTATION: 3.5 POUCES COLONNIALE/EA
PRESSION ENTREE: MIN 4.5 MAX 13.5 POUCES COLONNIALE/EA
TEMP MAXIMALE D'AIR DE SORTIE: 170 °F
AUGMENTATION DE TEMPERATURE: 40-70 °F
PRESSION STATIQUE MAX. 0.5 POUCES COLONNIALE/EA POUR ALTITUDE JUSQU'A 0-4500 PIEDS
DRIFICE RECOMMANDEES PAR MANUFACTURIER: 40 DMS
CONSULTEZ LE MANUEL D'INSTALLATION POUR DE PLUS AMPLES DETAIS.

COOLING DATA / CLIMATISATION	ELECTRICAL RATING / CIRCUIT ELECTRIQUE
CONTAINS/CONTIENT DU: HCFC-22	TO BE OPERATED AT / FAIRE FONCTIONNER:
FACTORY CHARGE/CHARGE A L'USINE	VOLTS 208/230 HERTZ 60 PHASE 3
EACH COMPRESSOR SYSTEM	USE 75°C (167°F) MIN 197 VOLTS MAX 265 VOLTS
CHARGE ENSEMBLE DE COMPRESSEUR	CONDUCTIONS AT 75°C
TOTAL	(127°F) AMPACITY MIN
7 LBS 0 OZS	MIN CWT AMPACITY
MIN DESIGN PRESSURE /PRESSION:	IMPERIAL THERM MIN
278 HIGHPRESS POU	MAX FUSE ON CWT
144 LOWPRESS POU	IMP. FUSE PER NEEL
	POUCES COLONNIALE/EA

MOTOR RATINGS / MOTEURS ELECTRIQUES	SLA	HP	PH	FLA	LRA
COMPRESSOR/COMPRESSEUR: EA	17.8	2	1	4.6	100
INDOOR BLOWER MOTOR/EVAPORATEUR: EA		3/4	1	4.6	
CONDENSER FAN/CONDENSEUR: EA		3/4	1	2.0	
COMBUSTION AIR BLD/COMBUSTION: CONDENSEUR				1	J
OPTIONAL EXHAUST FAN/VENTILATEUR D'EVACUATION: EA					NONE/AUCUN

FORCED AIR FURNACE WITH COOLING FOR OUTDOOR INSTALLATION ONLY
CLIMATISATION FORCED AIR FURNACE WITH COOLING POUR INSTALLATION A L'EXTERIEUR SEULEMENT
MINIMUM AMBIENT TEMPERATURE IN WHICH UNIT MAY BE OPERATED /
TEMPERATURE MINIMALE A LAQUELLE L'UNITE PEUT OPERER
0 - 40 °F MINIMUM AMBIENT MIN - 40 °F MINIMUM AMBIENT
0 - 40 °F MINIMUM AMBIENT MIN - 40 °F MINIMUM AMBIENT
MIN CLEARANCES TO COMBUSTIBLE CONSTRUCTION (IN) /
DESAISEMENT MIN ENTRE LES CONSTRUCTIONS COMBUSTIBLES
FRONT/DEVANT: 36, LEFT/DROITE: 24, REAR/ARRIERE: 12,
TOP: UNOBSTRUCTED DESOUS, SAME OBSTRUCTION
USE INSTALLATION OR COMBUSTIBLE CONSTRUCTION CLASS A, CLASS B OR CLASS C ROOMING
MATERIALS WITH NON-FLAMMABLE INSULATION ON BOTTOM SURFACE WHEN INSTALLED ON
SAFETY NO. 80112-02 FOR INSTALLATION ON NON-INSULATED FLOOR ONLY WITH BOTTOM
SURFACE WITHOUT 80112-02. USE MODEL AND SERIAL NUMBER WHEN ORDERING REPAIR PARTS.
POUR INSTALLATION SUR UN SOL NON ISOLEMENT AVEC UN ISOLANT DE CLASSE A, B OU C POUR SORTIE
D'AIR HORIZONTALE OU VERTICALE NON INFLAMMABLE AVEC ISOLANT DE CLASSE A, B OU C POUR SORTIE
DE MINIMALE POUR UN SOL NON ISOLEMENT AVEC ISOLANT DE CLASSE A, B OU C POUR SORTIE
MANUFACTURER SHALL BE HELD TO COMPLY THIS UNIT IS EQUIPPED FOR
APPAREIL EQUIPE POUR GAZ NATUREL ET A COMBUSTION EN AIR COMBUSTIBLE
L'APPAREIL DOIT ETRE UTILISE POUR UTILISATION AVEC UN ISOLANT
CONFORME POUR LE FABRICANT DOIT ETRE UTILISE POUR UTILISATION AVEC UN ISOLANT



CANADA 2.0 - 800
AND 221-4774-2.2-1989 CENTRAL FURNACE
PARTITION

