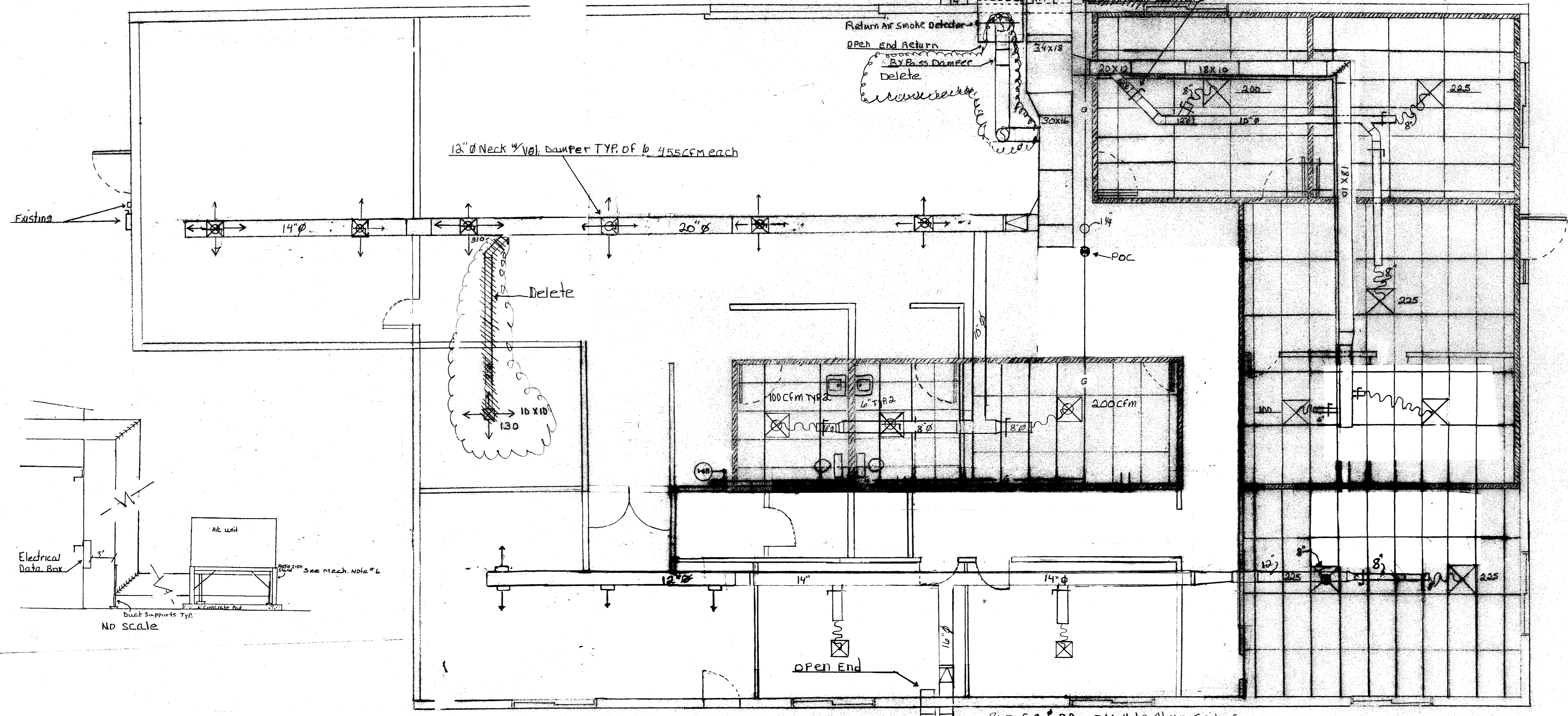


New Concrete Pad
12" Larger Than Unit Stand
New 96" Disconnect
New Phase Converter

owner supplied unit is side discharge

See Mech. Note #1

Delete Vari Track Damper & Replace w/ Manual Vol. Damper



Existing

12" Ø Neck 1/16" Damper TYP. OF 6 455CFM each

Delete

Electrical Data Box

A/C Unit

See Mech. Note #4

No scale

Open End

Run S.A. & RA UP Hall to Above Ceiling

3
Ton

owner supplied unit
New concrete pad 12" Larger Than unit stand

Mechanical Notes

- 1.) Maintain 3 ft. clearance between outside supply and return duct and electrical data box mounted on outside of wall.
- 2.) Line all exterior duct with 2" liner.
- 3.) Line all concealed duct with 1" liner.
- 4.) Wrap all concealed round pipe with R-value 6.0 insul sleeve.
- 5.) Clean and reuse as many existing office ceiling diffusers as possible
- 6.) Use 4" x 4" x 3/8" angle for unit support stand.
- 7.) Use 1/2" drop in anchors to anchor unit stand to concrete pad.
- 8.) Concrete pad for RTU 6" deep x 10'0" x 7'0".
- 9.) Concrete pad to be level.

Electrical Notes

- 1.) Existing electrical service to building is single phase. Owners RTU is three phase. Use phase converter to adapt existing electrical service.
- 2.) Demo existing 200 amp overhead electrical service.
- 3.) Supply and install a 400 amp single phase overhead service with 200 amp and 100 amp 2 pole breakers.
- 4.) Refore existing 200 amp panel inside building.
- 5.) Supply and install 100 amp single phase feeder to phase converter.
- 6.) Supply and install 20 kva phase converter in Nema 3R enclosure.
- 7.) Supply and install 100 amp 3 phase fused disconnect with 90 amp fuses next to phase converter.
- 8.) Supply and install feeders to disconnect and HVAC unit including final connections.
- 9.) Supply and install duct detector and indicator light as required by building code.
- 10.) Install power conv. Outlet for AC-1, powered separately from AC-1.

CITY OF GRAND JUNCTION
2529 HIGH COUNTRY COURT 81501

M-1

TEMPSTAR

WARNING

IMPROPER INSTALLATION, MAINTENANCE, OR REPAIR OF THIS UNIT CAN CAUSE PROPERTY DAMAGE OR INJURY. ALWAYS USE THE CORRECT TOOLS AND PROCEDURES. ALWAYS FOLLOW THE INSTRUCTIONS AND SAFETY WARNINGS. ALWAYS USE THE CORRECT TOOLS AND PROCEDURES. ALWAYS FOLLOW THE INSTRUCTIONS AND SAFETY WARNINGS. ALWAYS USE THE CORRECT TOOLS AND PROCEDURES. ALWAYS FOLLOW THE INSTRUCTIONS AND SAFETY WARNINGS.

1. Always use the correct tools and procedures. 2. Always use the correct tools and procedures. 3. Always use the correct tools and procedures. 4. Always use the correct tools and procedures. 5. Always use the correct tools and procedures. 6. Always use the correct tools and procedures. 7. Always use the correct tools and procedures. 8. Always use the correct tools and procedures. 9. Always use the correct tools and procedures. 10. Always use the correct tools and procedures.

WARNING
Always use the correct tools and procedures. Always use the correct tools and procedures. Always use the correct tools and procedures. Always use the correct tools and procedures. Always use the correct tools and procedures. Always use the correct tools and procedures. Always use the correct tools and procedures. Always use the correct tools and procedures. Always use the correct tools and procedures. Always use the correct tools and procedures.

FOR YOUR SAFETY

Always use the correct tools and procedures. Always use the correct tools and procedures. Always use the correct tools and procedures. Always use the correct tools and procedures. Always use the correct tools and procedures. Always use the correct tools and procedures. Always use the correct tools and procedures. Always use the correct tools and procedures. Always use the correct tools and procedures. Always use the correct tools and procedures.



