



Purchasing Division

## ADDENDUM NO. 4

**DATE:** May 4, 2023  
**FROM:** City of Grand Junction Purchasing Division  
**TO:** All Offerors  
**RE:** 2023 Sewer Replacement – 27 Road – Unawep Ave to B <sup>3</sup>/<sub>4</sub> Road IFB-5218-23-DD

Offerors responding to the above referenced solicitation are hereby instructed that the requirements have been clarified, modified, superseded, and supplemented as to this date as hereinafter described.

Please make note of the following clarifications:

1. **Question:** Bid Item #1 says (cleanout not installed) but on the plan sheets, Note #354 it says to install cleanout. Is the Contractor to supply and install cleanouts for all services? Is there another bid item # the cleanouts should be included in if actually needed?
- Answer:** See attached and linked revised drawing/plan sheets with the following corrections:  
#354 strikethrough on cleanout note and clarified  
#677 2" thick, one-2" lift on note  
[Revised Plans/Drawings Addendum 4 IFB-5218-23-DD](#)

No changes to the Bid Specification Sheets

The original solicitation for the project noted above is amended as noted.

All other conditions of subject remain the same.

Respectfully,

A handwritten signature in blue ink that reads "Dolly Daniels". The signature is written in a cursive, flowing style.

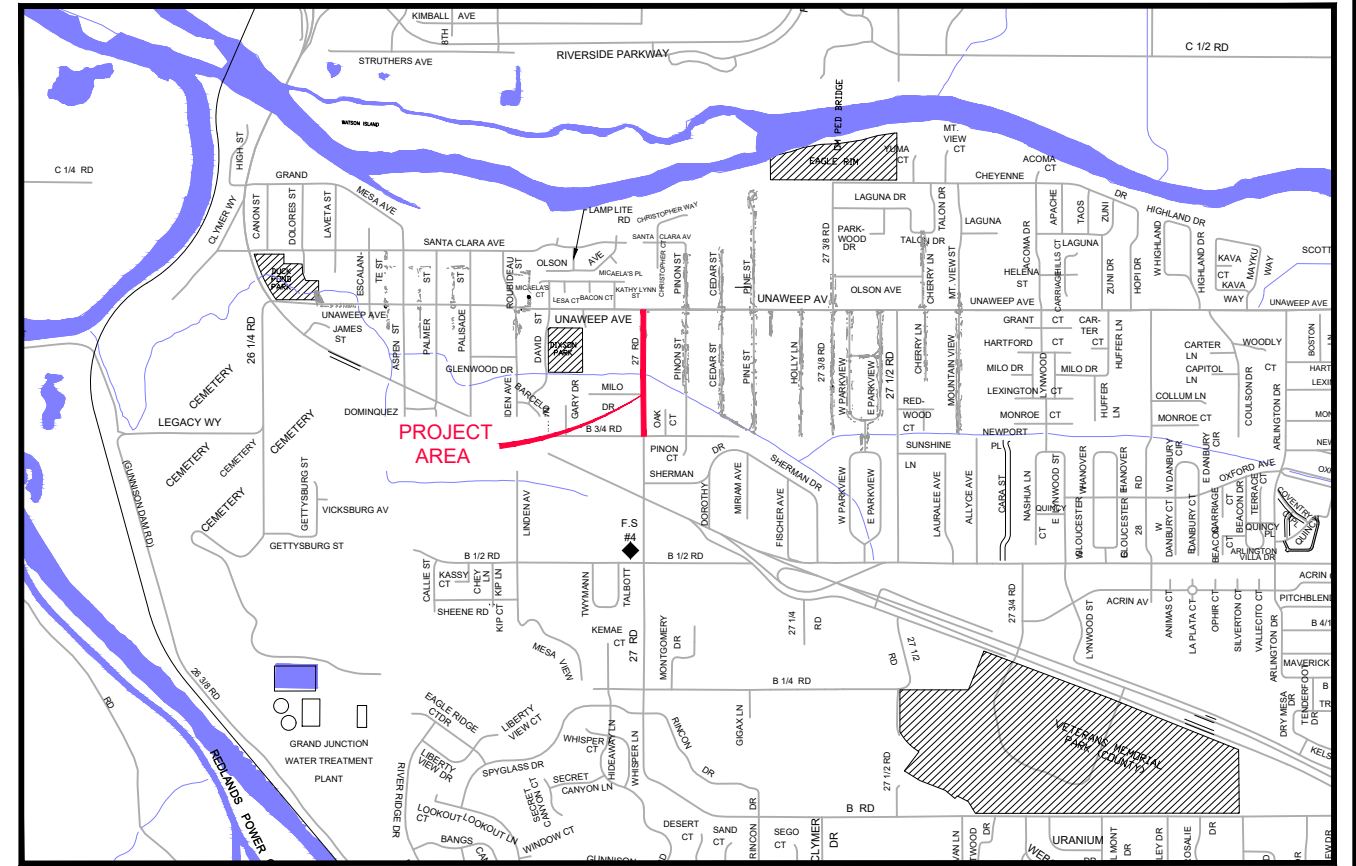
Dolly Daniels, Senior Buyer  
City of Grand Junction, Colorado

# 2022 Sewer Line Replacement

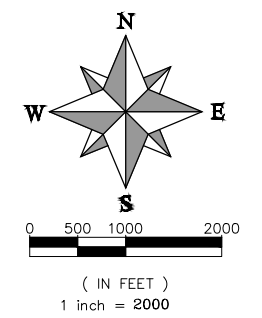
## 27 Rd – Unaweep Ave to B 3/4 Rd

- 1 — Cover Sheet
- 2 — Standard Abbreviations, Legend and Symbols
- 3 — Project Control Map
- 4 — 27 ROAD P&P Sta 10 + 00 — 12 + 00
- 5 — 27 ROAD P&P Sta 12 + 00 — 14 + 00
- 6 — 27 ROAD P&P Sta 14 + 00 — 16 + 00
- 7 — 27 ROAD Sta 16 + 00 — 18 + 00
- 8 — 27 ROAD P&P Sta 18 + 00 — 20 + 20

VICINITY MAP



UTILITIES AND AGENCIES								
AGENCY	NAME	POSITION	ROLE	MAILING ADDRESS	STREET ADDRESS	CITY, STATE	VOICE-WK	FAX
CITY OF GRAND JUNCTION	Toby Thieman	PROJECT ENGINEER	PROJECT ENGINEER	333 WEST AVE BLDG C	333 WEST AVE BLDG C	GRAND JCT., CO 81501	(970) 244-1559	(970) 256-4022
CITY OF GRAND JUNCTION	Toby Thieman	PROJECT ENGINEER	SANITARY SEWER	333 WEST AVE BLDG C	333 WEST AVE BLDG C	GRAND JCT., CO 81501	(970) 244-1559	(970) 256-4022
ORCHARD MESA IRRIGATION	MAX SCHMIDT	MANAGER	IRRIGATION	668 38 RD	668 38 RD	PALISADE, CO 81526	(970) 464-7885	(970) 464-5928
SPECTRUM	JEFF VALDEZ	MANAGER	CABLE TV	2502 FORESIGHT CIRCLE	2502 FORESIGHT CIRCLE	GRAND JCT., CO 81504	(970) 245-8750	(970) 245-6803
CENTURYLINK	CHRIS JOHNSON	ENGINEER	TELEPHONE	2524 BLICHMANN AVE	2524 BLICHMANN AVE	GRAND JCT., CO 81504	(970) 244-4311	(970) 240-4349
UTE WATER	JUSTIN BATES	SUPERVISOR	WATER	PO BOX 460	2190 H 1/4 RD	GRAND JCT., CO 81502	(970) 242-7491	(970) 242-9189
XCEL	STEVE PIBURN	UNIT MANAGER	ELECTRIC	2538 BLICHMANN AVE	2538 BLICHMANN AVE	GRAND JCT., CO 81506	(970) 244-2664	(970) 244-2664
XCEL	SARAH DARRICAU	UNIT MANAGER	GAS	2538 BLICHMANN AVE	2538 BLICHMANN AVE	GRAND JCT., CO 81506	(970) 244-2656	(970) 244-2656



PROJECT NO. F0016-F001642

NOTE: NOTIFY AFFECTED UTILITY VENDOR 48 HOURS PRIOR TO EXCAVATIONS THAT WILL EXPOSE UTILITY LINES. THE COVER SHEET WILL HAVE A LISTING OF UTILITY VENDORS AND TELEPHONE NUMBERS.

REVISION	DESCRIPTION	DATE
REVISION Δ NOTE	REVISION	5/4/2023
REVISION Δ XXX		201X
REVISION Δ XXX		201X
REVISION Δ XXX		201X

  
**Public Works**  
*Engineering Division*



DRAWING STATUS:	
●	PROGRESS
○	FINAL CONSTRUCTION DRAWINGS
○	ASBUILT
DESIGNED BY:	
TOBY THIEMAN	09/2022
REVIEWED BY:	
KEN HALEY, ENGINEERING MANAGER	09/2022
AUTHORIZED FOR CONSTRUCTION	
KEN HALEY, ENGINEERING MANAGER	09/2022
ACCEPTED AS CONSTRUCTED	
XXX, PROJECT ENGINEER	201X

### ABBREVIATIONS

AASHTO	AMERICAN ASSOCIATION OF STATE HIGHWAY & TRANSPORTATION OFFICIALS
ABC	AGGREGATE BASE COURSE
AC	ASBESTOS CEMENT
AP	ANGLE POINT
ASB	ANCHORED STRAW BALES
ASP	ALUMINIZED STEEL PIPE
ASTM	AMERICAN SOCIETY FOR TESTING MATERIALS
AWWA	AMERICAN WATER WORKS ASSOCIATION
BC	BACK OF CURB
BF	BUTTERFLY VALVE
BOW	BACK OF WALK
BCR	BEGIN CURB RETURN
BOT	BOTTOM
BSWMP	BETTER STORM WATER MANAGEMENT PRACTICES
CH	CHORD
CAP	CORRUGATED ALUMINUM PIPE
CDOT	COLORADO DEPARTMENT OF TRANSPORTATION
CI	CAST IRON
C,G,& SW	CURB, GUTTER & SIDEWALK
C	CENTER LINE
CL	CLEAR
OMP	CORRUGATED METAL PIPE
CO	CLEAN OUT
COMB	COMBINATION (AS IN STORM SEWER AND SANITARY SEWER)
CONC	CONCRETE
CSM	CITY SURVEY MONUMENT
CSP	CORRUGATED STEEL PIPE
CU	COPPER
DI	DUCTILE IRON
DWY	DRIVEWAY
E	ELECTRIC
ECR	END CURB RETURN
EG	EDGE OF GUTTER
EL	ELEVATION
EP	EDGE OF PAVEMENT
EX	EXISTING
FB	FULL BODY
FC	FACE OF CURB
FG	FINISHED GRADE
F	FLOW LINE
FL	FLANGE
FM	FORCE MAIN
FO	FIBER OPTICS
FS	FAR SIDE
FTG	FOOTING
G	GAS
GB	GRADE BREAK
GM	GAS METER
GV	GATE VALVE
HBP	HOT BITUMINOUS PAVEMENT
HDPE	HIGH DENSITY POLYETHYLENE
INV	INVERT
IRR	IRRIGATION
L	LENGTH OF ARC
LC	LONG CHORD
LF	LINEAR FEET
LL	LONG ARC
LS	SHORT ARC
LT	LEFT
MB	MAILBOX
MCSM	MESA COUNTY SURVEY MONUMENT
MH	MANHOLE
MJ	MECHANICAL JOINT
MW	MILL WRAP
N/A	NOT APPLICABLE
NIC	NOT IN CONTRACT
NOP	NO ONE PERSON
NRCP	NON-REINFORCED CONCRETE PIPE
NS	NEAR SIDE
NTS	NOT TO SCALE
OHP	OVERHEAD POWER
OHT	OVERHEAD TELEPHONE
PC	POINT OF CURVATURE
PCC	POINT OF COMPOUND CURVATURE
PE	POLYETHYLENE
PERF	PERFORATED
PI	POINT OF INTERSECTION
PIP	PLASTIC IRRIGATION PIPE
POC	POINT ON CURVE
POT	POINT ON TANGENT
PR	PROPOSED
PRC	POINT OF REVERSE CURVATURE
PT	POINT OF TANGENCY
PVC	POLYVINYL CHLORIDE
R	RADIUS
RCP	REINFORCED CONCRETE PIPE
REQ'D	REQUIRED
RG	RESTRAINED GLANDS
RL	LONG RADIUS
ROW	RIGHT OF WAY
RP	RADIUS POINT
RR	RAIL ROAD
RS	SHORT RADIUS
RT	RIGHT
S	SLOPE
SAN	SANITARY
SC	SHORT CHORD
SCD	STANDARD CONTRACT DOCUMENTS
SCH	SCHEDULE
SF	SILT FENCE
SL	SECTION LINE
SSRB	STANDARD SPECIFICATIONS FOR ROAD & BRIDGE CONSTRUCTION
SSUU	STANDARD SPECIFICATIONS FOR CONSTRUCTION OF UNDERGROUND UTILITIES
STA	STATION
STL	STEEL
STM	STORM
T	TELEPHONE
TAN	LENGTH OF TANGENT
TC	TOP OF CURB
TH	TEST HOLE
TV	TELEVISION
(TYP)	TYPICAL
UU	UNDERGROUND UTILITIES
VC	VERTICAL CURVE
VCP	VITRIFIED CLAY PIPE
VPC	VERTICAL POINT OF CURVATURE
VPCC	VERTICAL POINT OF COMPOUND CURVATURE
VPRC	VERTICAL POINT OF REVERSE CURVATURE
VPI	VERTICAL POINT OF INTERSECTION
VPT	VERTICAL POINT OF TANGENCY
W	WATER
Δ	DELTA ANGLE

### LEGEND

BSWMP	BSWMP	--- --- --- --- --- --- --- ---
DRAINAGE BASIN BOUNDARY		--- --- --- --- --- --- --- ---
BSWMP	BSWMP	--- --- --- --- --- --- --- ---
ANCHORED STRAW BALES	ASB ASB ASB ASB ASB ASB ASB ASB	
BSWMP	BSWMP	--- --- --- --- --- --- --- ---
SILT FENCE	SF SF SF SF SF SF SF SF	
BSWMP	BSWMP	--- --- --- --- --- --- --- ---
EROSION LOG	EL EL EL EL EL EL EL EL	
BUILDING		
CONCRETE CURB AND GUTTER		--- --- --- --- --- --- --- --- 2' CURB AND GUTTER
CONCRETE CURB, GUTTER, & SIDEWALK		--- --- --- --- --- --- --- --- 7' C. G. & SW
CONCRETE DITCH		--- --- --- --- --- --- --- --- CONCRETE
CONCRETE SIDEWALK		--- --- --- --- --- --- --- --- 4" SW
CULVERT		--- --- --- --- --- --- --- --- 18" RCP
EARTH DITCH		EARTH . . . EARTH . . . EARTH . . .
EDGE OF GRAVEL		-----
EDGE OF PAVEMENT		=====
FENCE (BARBED WIRE)		---x---x---x---x---x---x---x---
FENCE (CHAIN LINK)		---x---x---x---x---x---x---x---
FENCE (IRON)		---x---x---x---x---x---x---x---
FENCE (PLASTIC)		---x---x---x---x---x---x---x---
FENCE (WOOD)		---x---x---x---x---x---x---x---
FENCE (WOVEN WIRE)		---x---x---x---x---x---x---x---
GUARD RAIL		--- --- --- --- --- --- --- ---
HATCHING: INDICATES ASPHALT REMOVAL		
HATCHING: INDICATES CONCRETE REMOVAL		
HATCHING: INDICATES STAGING AREA		
LINE (CENTER OF IMPROVEMENTS)		----- CENTERLINE
LINE (CITY LIMITS)		----- CITY LIMITS
LINE (CONTROL)		----- CONTROL LINE
LINE (EASEMENT)		-----
LINE (MONUMENT/SECTION)		----- MONUMENT/SECTION LINE
LINE (PROPERTY)		-----
LINE (RIGHT OF WAY)		-----
MATCH LINE	MATCH LINE	--- --- --- --- --- --- --- ---
PIPE (IRRIGATION)		--- --- --- --- --- --- --- --- 4" IRR
PIPE (SIPHON)		--- --- --- --- --- --- --- --- 4" SIPHON

PROPOSED CONCRETE CURB AND GUTTER	=====
PROPOSED CONCRETE CURB, GUTTER, & SIDEWALK	=====
PROPOSED CONCRETE SIDEWALK	=====
PROPOSED "WET" UTILITIES (CONSTRUCTION NOTE WILL INDICATE TYPE, SIZE, AND MATERIAL OF NEW MAIN)	8" PVC SANITARY SEWER
ALL PROPOSED FEATURES NOT SHOWN IN LEGEND WILL BE SHOWN THE SAME AS THEIR EXISTING COUNTERPART, BUT INDICATED BY BOLDER LINETYPE	
RAIL ROAD	
RETAINING WALL	1' RETAINING WALL
STRIPING (CONTINUOUS WHITE)	WHITE
STRIPING (DASHED WHITE)	WHITE
STRIPING (CONTINUOUS YELLOW)	YELLOW
STRIPING (DASHED YELLOW)	YELLOW
TOP OF SLOPE	4570 4580
CONTOUR LINES (SHOWN BETWEEN TOP & TOE)	4570
TOE OF SLOPE	4570
TRAFFIC DETECTOR LOOP	
UTILITY LINE (ABANDON) (THIS CASE A WATER LINE)	W (ABANDON) 8" W
UTILITY LINE (CABLE TV)	TV TV TV
UTILITY LINE (ELECTRIC)	E E E
UTILITY LINE (FIBER OPTIC)	FO FO FO
UTILITY LINE (GAS)	G 1 1/4" M.W. G
UTILITY LINE (HIGH VOLTAGE OVERHEAD POWER)	HVHVP
UTILITY LINE (OVERHEAD POWER)	OHP
UTILITY LINE (OVERHEAD TELEPHONE)	OHT
UTILITY LINE (SANITARY SEWER)	8" SAN
UTILITY LINE (SANITARY SEWER FORCE MAIN)	8" SFM
UTILITY LINE (STORM SEWER)	8" STM
UTILITY LINE (STORM SEWER, PERFORATED)	8" PERF
UTILITY LINE (STORM/SANITARY SEWER SEWER COMBINATION)	18" COMB
UTILITY LINE (TELEPHONE)	T T T
UTILITY LINE (WATER)	W 8" W

### SYMBOLS

BENCH MARK	
CATCH BASIN	
CLEAN OUT	
CURB STOP	
FIRE HYDRANT	
GUY WIRE ANCHOR	
HEADGATE	
IRRIGATION PUMP	
MAILBOX	
MANHOLE (ELECTRIC)	
MANHOLE (GAS)	
MANHOLE (SANITARY/STORM)	
MANHOLE (TELEPHONE)	
MANHOLE (TV)	
MANHOLE (WATER)	
METER (GAS)	
METER (WATER)	
PEDESTAL (TELEPHONE)	
PEDESTAL (TV)	
PROPERTY PIN	
PULL BOX	
REDUCER FITTING	
SIGN OR POST (SIGN TYPE NOTED)	
SPRINKLER HEAD	
STREET LIGHT	
SURVEY MONUMENT (CITY)	
SURVEY MONUMENT (TYPE NOTED)	
TEST HOLE	
TRAFFIC PAINT MARKING	
TRAFFIC SIGNAL POLE AND MAST ARM	
UTILITY POLE	
VALVE (GAS)	
VALVE (IRRIGATION)	
VALVE (WATER)	
VEGETATION (HEDGE OR BUSH)	
VEGETATION (TREE STUMP)	
VEGETATION (TREE) (CALIPER SIZE NOTED)	
WATER HYDRANT	
WEIR	
YARD LIGHT	

NORTH ARROW:

BAR SCALE:

( IN FEET )  
1 inch = 20 feet

REVISION Δ	DESCRIPTION	DATE	PROJECT NO.
REVISION Δ			DRAWN BY JCS DATE 4-02
REVISION Δ			DESIGNED BY DATE
REVISION Δ			CHECKED BY DATE
REVISION Δ			APPROVED BY DATE

SCALES: PLAN & PROFILE



PUBLIC WORKS  
ENGINEERING DIVISION

CITY OF GRAND JUNCTION  
STANDARD ABBREVIATIONS, LEGEND,  
AND SYMBOLS



REVISION	DESCRIPTION	DATE	PROJECT NO. F001642
REVISION △			DRAWN BY DJM DATE 09/2022
REVISION △			DESIGNED BY DJM DATE 09/2022
REVISION △			CHECKED BY TRT DATE 09/2022
REVISION △			APPROVED BY KH DATE 08/2022

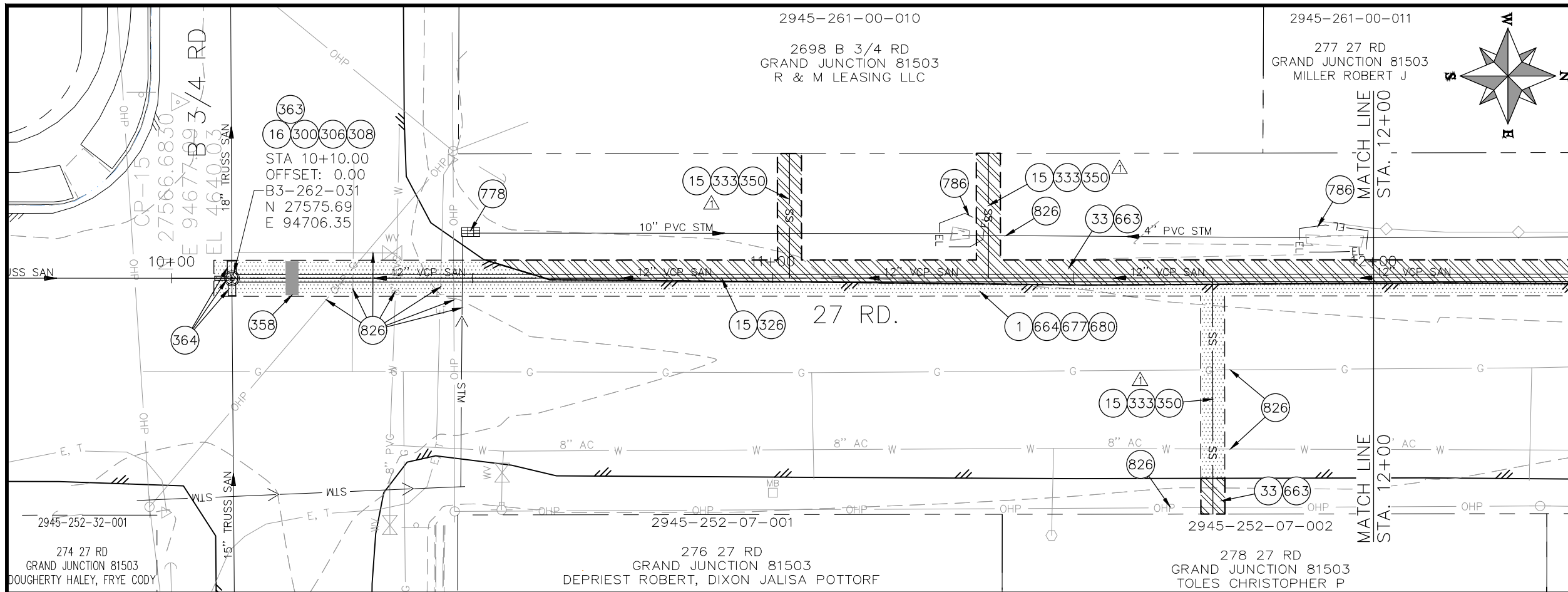
SCALES: PLAN & PROFILE



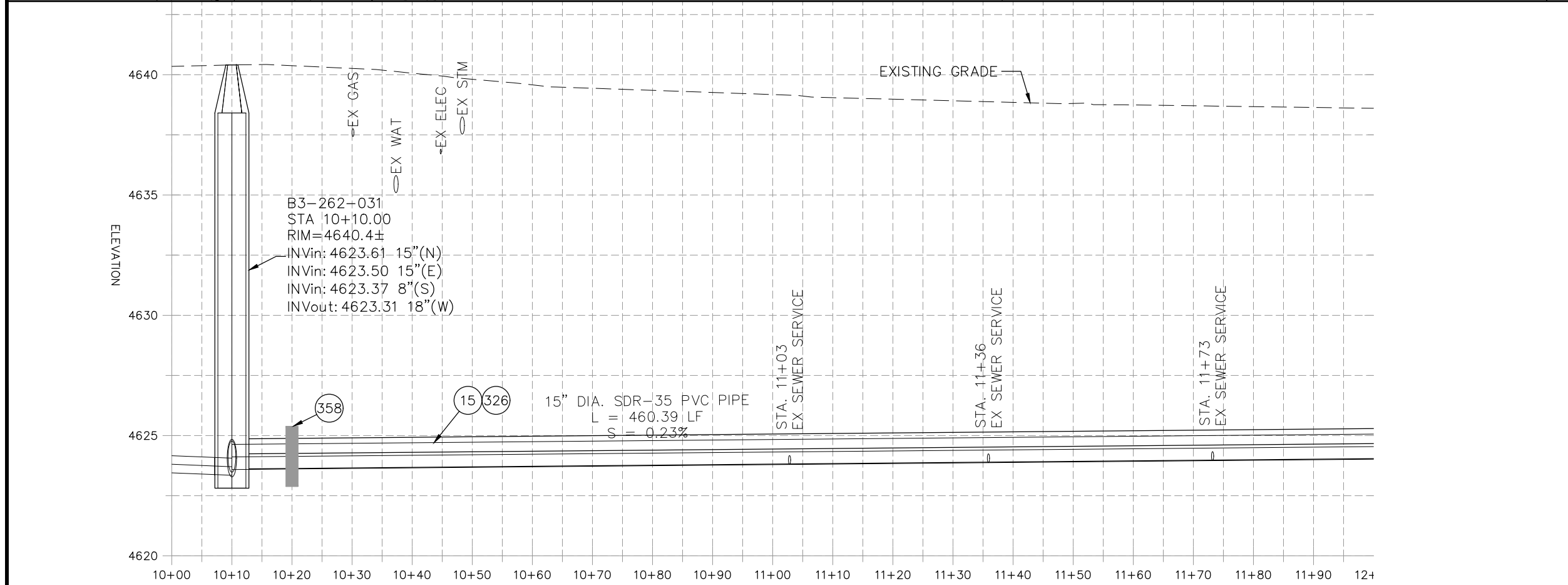
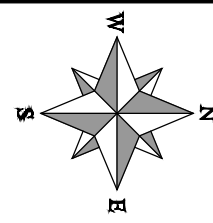
PUBLIC WORKS  
ENGINEERING DIVISION

2022 SEWER LINE REPLACEMENT  
27 RD - UNAWEEP AVE TO B 3/4 RD  
PROJECT CONTROL MAP





- CONSTRUCTION NOTES**
- ① 202 - REMOVAL OF ASPHALT MAT. CUT AND REMOVE ASPHALT AS SHOWN. (INDICATED BY DOT HATCH PATTERN)
  - 15 202 - REMOVAL OF PIPE AS SHOWN. (SIZE AND TYPE AS SHOWN ON PLAN)
  - 16 202 - REMOVAL OF MANHOLE. CONTRACTOR SHALL SALVAGE RING AND COVER AND DELIVER TO CITY SHOPS.
  - 33 202 - REMOVE EXISTING SURFACE MATERIAL.
  - 300 102.11/108.5 - SANITARY SEWER BASIC MANHOLE (60" I.D.). INCLUDES CONNECTION OF ADJACENT SEWER LINE, FORMING INVERTS AND ADJUSTING TO FINAL GRADE. (SEE CITY OF GRAND JUNCTION STANDARD DETAIL SS-02).
  - 306 102.11/108.5 - MANHOLE BARREL SECTION (D>5) (60" I.D.).
  - 308 102.11/108.5 - MANHOLE INTERIOR CORROSION PROTECTION (CASTAGRA ECODUR 201 PROTECTIVE COATING OR APPROVED EQUAL) (PROTECTIVE COATING SHALL BE APPLIED TO PREPARED MANHOLE INVERT, BENCH, BARRELS, AND CONE SECTIONS. MANHOLE INVERTS AND BENCHES SHALL BE COATED PRIOR TO WASTEWATER INTRODUCTION)
  - 326 102.9/108.2 - 15" GRAVITY SEWER PIPE (SDR 35 PVC). INCLUDES TYPE A BEDDING AND HAUNCHING MATERIAL AND BACKFILL OF TRENCH WITH NATIVE MATERIALS MEETING 103.16 EARTH BACKFILL MATERIAL.
  - 333 102.9/108.2 - 4" SEWER SERVICE PIPE (SDR 35 PVC). INCLUDES TYPE A BEDDING AND HAUNCHING MATERIAL AND BACKFILL OF TRENCH WITH NATIVE MATERIALS MEETING 103.16 EARTH BACKFILL MATERIAL.
  - 350 102.9/108.3 - 15" x 4" SEWER SERVICE TAP. FULL BODY WYE (SEE STD. DETAIL SS-06).
  - 354 104.20 - INSTALL 2-WAY SANITARY SEWER SERVICE CLEANOUT (STD. DETAIL SS-07). INCLUDES CLEANOUT RING AND COVER AND CONCRETE GOLLAR IN UNPAVED AREAS (SEE STD. DETAIL SS-07).
  - 358 103 - CLAY CUT-OFF WALL (INCIDENTAL TO SEWER INSTALLATION PAY ITEM)
  - 363 BYPASS PUMPING (AS DEEMED NECESSARY BY THE CITY OR CONTRACTOR)
  - 364 CONNECT TO EXISTING SEWER PIPE. THE CONTRACT PRICE FOR SEWER PIPE SHALL INCLUDE THE COST OF CONNECTION TO EXISTING PIPELINE.
  - 663 304 - AGGREGATE BASE COURSE (CLASS 6) (6" THICK)
  - 664 304 - AGGREGATE BASE COURSE (CLASS 6) (12" THICK)
  - 677 401.08 - HOT BITUMINOUS PAVEMENT (2" THICK) (GRADING SX, BINDER GRADE PG 64-22) (ONE 2" LIFTS).
  - 680 401.08 - HOT BITUMINOUS PAVEMENT (PATCHING) (2" THICK) (GRADING SX, BINDER GRADE PG 64-22, GYR = 75) (ONE 2" LIFT TOP MAT) (T-TOP PATCH) (SEE CITY STD. DETAIL GU-03)
  - 778 208 - STORM DRAIN INLET PROTECTION (SILT-SACK STYLE OR APPROVED EQUAL) (NO GRAVEL/ROCK BAG FILTERS ARE ALLOWED)
  - 786 EROSION CONTROL LOG
  - 826 PROTECT EXISTING UTILITY LINE IN PLACE.



NOTE:  
CONTRACTOR SHALL VERIFY SEWER SERVICE LOCATIONS BEFORE REPLACING PIPE.

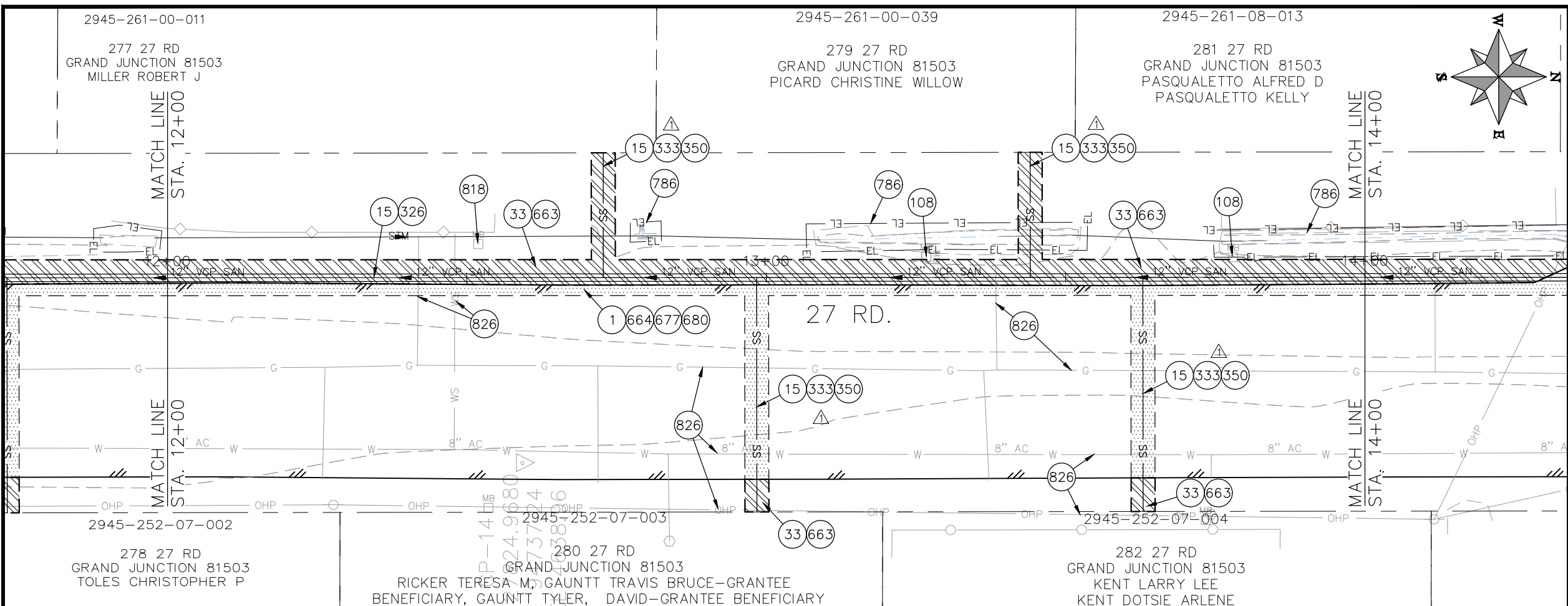
REVISION	NOTE	DATE	PROJECT NO.	DATE
REVISION Δ	NOTE REVISION	5/4/2023	F001642	09/2022
REVISION Δ	XXX	202X		09/2022
REVISION Δ	XXX	202X		09/2022
REVISION Δ	XXX	202X		09/2022

DESIGNED BY	DATE	CHECKED BY	DATE	APPROVED BY	DATE
DJM	09/2022	TRT	09/2022	KH	09/2022

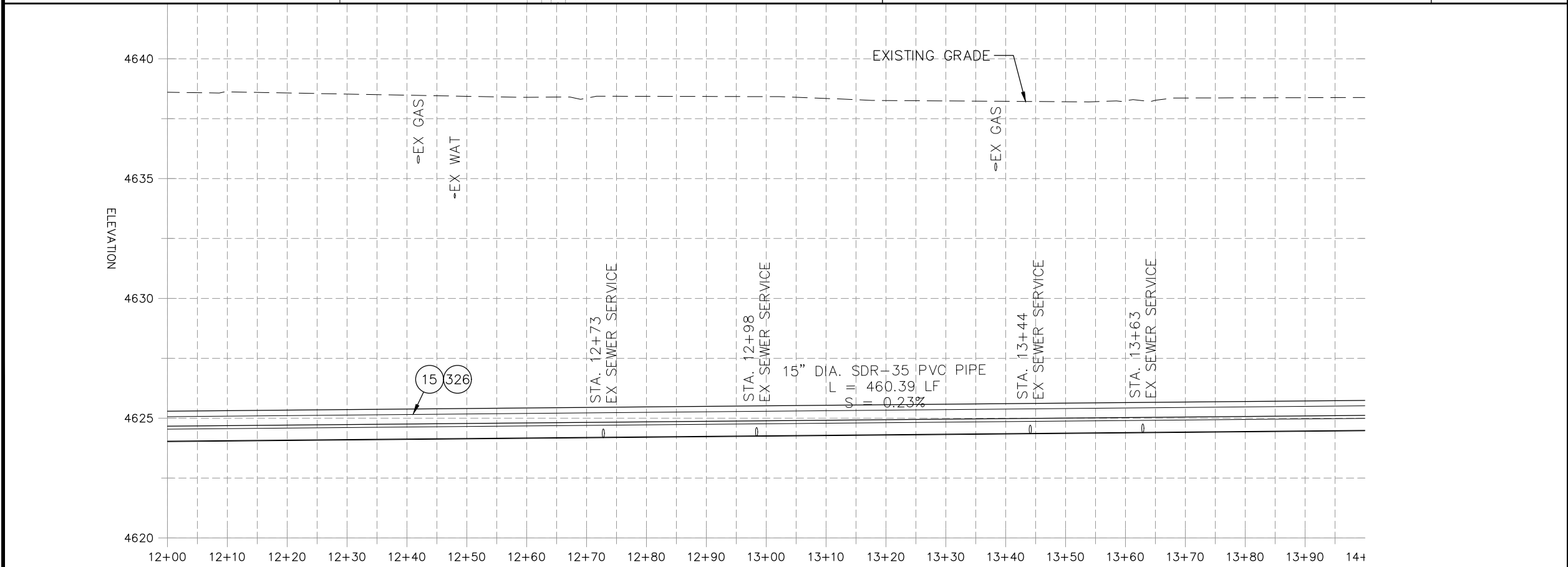
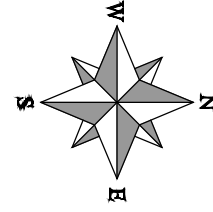
SCALES: PLAN & PROFILE  
 HORIZONTAL: 1" = 20'  
 0 5 10 20  
 VERTICAL: 1" = 5'  
 0 1.25 2.5 5

**CITY OF**  
**Grand Junction**  
 COLORADO  
**PUBLIC WORKS**  
**ENGINEERING DIVISION**

**2022 SEWER LINE REPLACEMENT**  
**27 ROAD PLAN AND PROFILE**  
**STA 10+00 TO STA 12+00**



- CONSTRUCTION NOTES**
- ① 202 - REMOVAL OF ASPHALT MAT. CUT AND REMOVE ASPHALT AS SHOWN. (INDICATED BY DOT HATCH PATTERN)
  - 15 202 - REMOVAL OF PIPE AS SHOWN. (SIZE AND TYPE AS SHOWN ON PLAN)
  - 33 202 - REMOVE EXISTING SURFACE MATERIAL.
  - 108 210 - RESET MAILBOX TO NEW 4X4 POST.
  - 326 102.9/108.2 - 15" GRAVITY SEWER PIPE (SDR 35 PVC). INCLUDES TYPE A BEDDING AND HAUNCHING MATERIAL AND BACKFILL OF TRENCH WITH NATIVE MATERIALS MEETING 103.16 EARTH BACKFILL MATERIAL.
  - 333 102.9/108.2 - 4" SEWER SERVICE PIPE (SDR 35 PVC). INCLUDES TYPE A BEDDING AND HAUNCHING MATERIAL. BACKFILL OF TRENCH WITH NATIVE MATERIALS MEETING 103.16 EARTH BACKFILL MATERIAL.
  - 663 304 - AGGREGATE BASE COURSE (CLASS 6) (6" THICK)
  - 350 102.9/108.3 - 15" x 4" SEWER SERVICE TAP. FULL BODY WYE (SEE STD. DETAIL SS-06).
  - 354 104.20 - INSTALL 2-WAY SANITARY SEWER SERVICE CLEANOUT (STD. DETAIL SS-07). INCLUDES CLEANOUT RING AND COVER AND CONCRETE COLLAR IN UNPAVED AREAS (SEE STD. DETAIL SS-07)
  - 664 304 - AGGREGATE BASE COURSE (CLASS 6) (12" THICK)
  - 677 401.08 - HOT BITUMINOUS PAVEMENT (2" THICK) (GRADING SX, BINDER GRADE PG 64-22) (ONE 2" LIFTS)
  - 680 401.08 - HOT BITUMINOUS PAVEMENT (PATCHING) (2" THICK) (GRADING SX, BINDER GRADE PG 64-22, GYR = 75) (ONE 2" LIFT TOP MAT) (T-TOP PATCH) (SEE CITY STD. DETAIL GU-03)
  - 786 EROSION CONTROL LOG
  - 818 PROTECT MAILBOX.
  - 826 PROTECT EXISTING UTILITY LINE IN PLACE.



NOTE:  
CONTRACTOR SHALL VERIFY SEWER SERVICE LOCATIONS BEFORE REPLACING PIPE.

REVISION	DESCRIPTION	DATE
REVISION Δ NOTE	REVISION	5/4/2023
REVISION Δ XXX		202X
REVISION Δ XXX		202X
REVISION Δ XXX		202X

PROJECT NO. F001642	DRAWN BY DJM	DATE 09/2022
DESIGNED BY DJM	DATE 09/2022	
CHECKED BY IRT	DATE 09/2022	
APPROVED BY KH	DATE 09/2022	

SCALES: PLAN & PROFILE	
HORIZONTAL: 1" = 20'	0 5 10 20
VERTICAL: 1" = 5'	0 1.25 2.5 5



**PUBLIC WORKS  
ENGINEERING DIVISION**

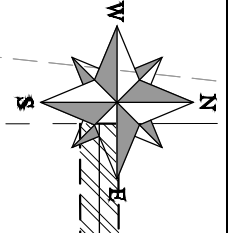
**2022 SEWER LINE REPLACEMENT  
27 ROAD PLAN AND PROFILE  
STA 12+00 TO STA 14+00**

2945-261-08-013

281 27 RD  
GRAND JUNCTION 81503  
PASQUALETTO ALFRED D  
PASQUALETTO KELLYE

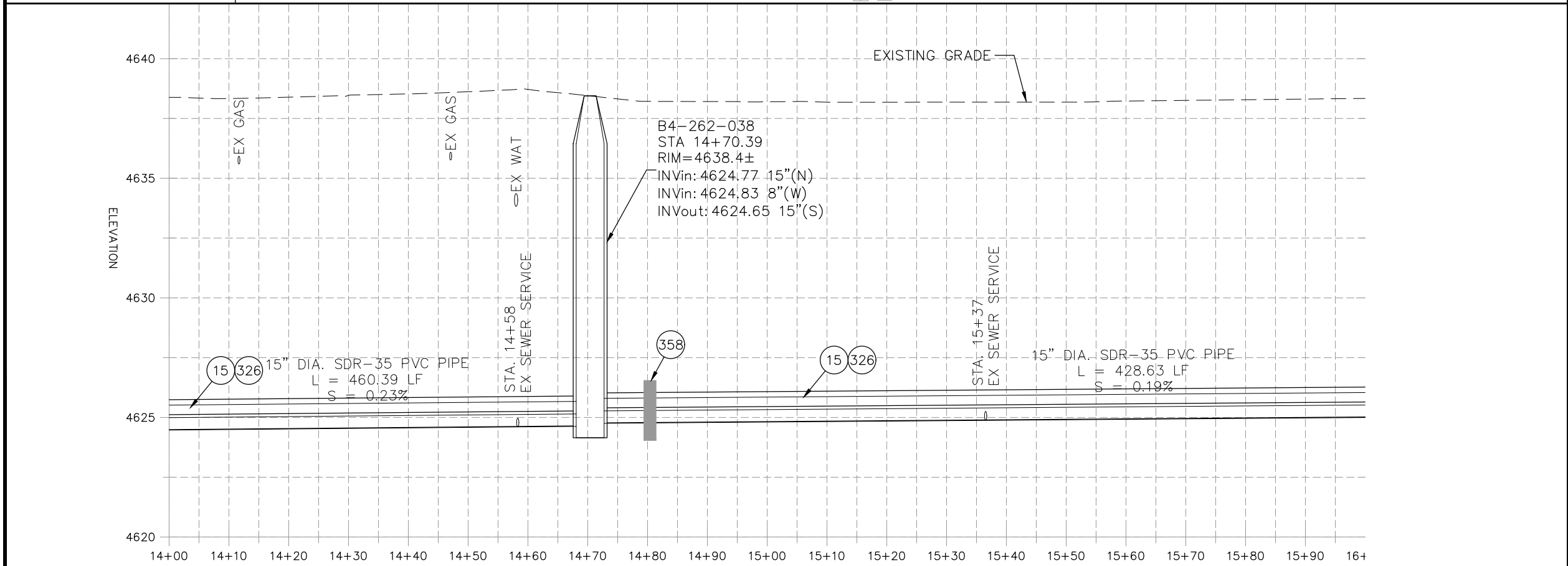
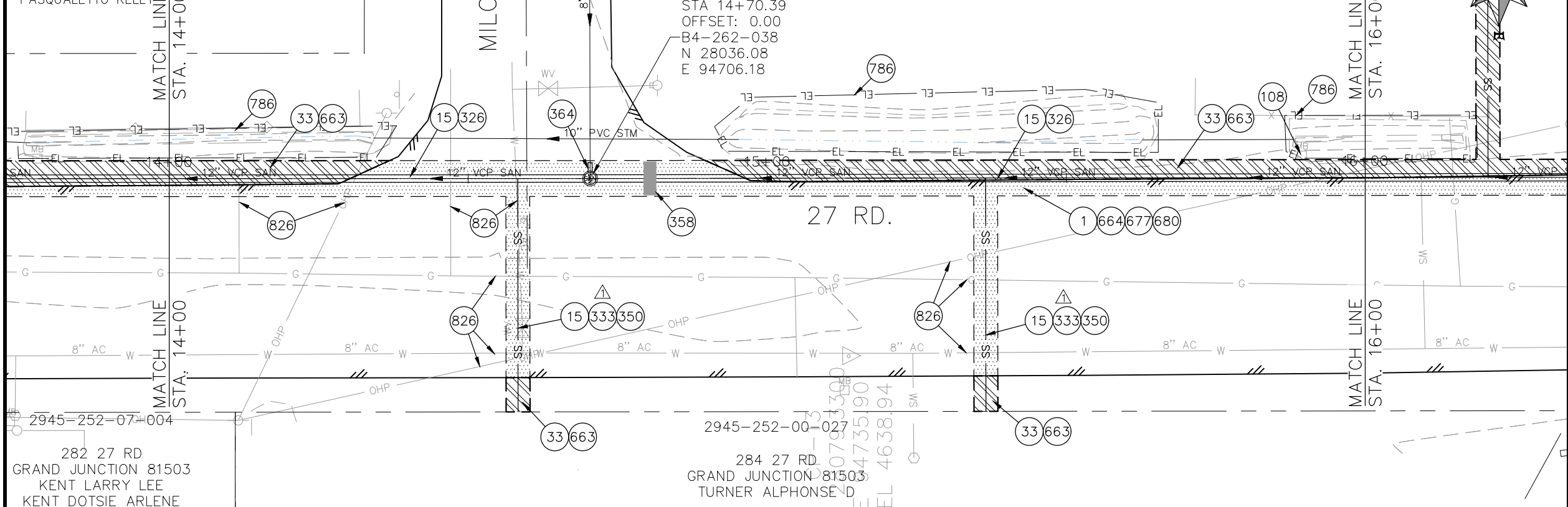
MILO DR.

363  
16 300 306 308  
STA 14+70.39  
OFFSET: 0.00  
B4-262-038  
N 28036.08  
E 94706.18



CONSTRUCTION NOTES

- 1 202 - REMOVAL OF ASPHALT MAT. CUT AND REMOVE ASPHALT AS SHOWN. (INDICATED BY DOT HATCH PATTERN)
- 15 202 - REMOVAL OF PIPE AS SHOWN. (SIZE AND TYPE AS SHOWN ON PLAN)
- 16 202 - REMOVAL OF MANHOLE. CONTRACTOR SHALL SALVAGE RING AND COVER AND DELIVER TO CITY SHOPS.
- 33 202 - REMOVE EXISTING SURFACE MATERIAL.
- 108 210 - RESET MAILBOX TO NEW 4X4 POST.
- 300 102.11/108.5 - SANITARY SEWER BASIC MANHOLE (60" I.D.). INCLUDES CONNECTION OF ADJACENT SEWER LINE, FORMING INVERTS AND ADJUSTING TO FINAL GRADE. (SEE CITY OF GRAND JUNCTION STANDARD DETAIL SS-02).
- 306 102.11/108.5 - MANHOLE BARREL SECTION (D>5') (60" I.D.).
- 308 102.11/108.5 - MANHOLE INTERIOR CORROSION PROTECTION (CASTAGRA ECODUR 201 PROTECTIVE COATING OR APPROVED EQUAL) (PROTECTIVE COATING SHALL BE APPLIED TO PREPARED MANHOLE INVERT, BENCH, BARRELS, AND CONE SECTIONS. MANHOLE INVERTS AND BENCHES SHALL BE COATED PRIOR TO WASTEWATER INTRODUCTION)
- 326 102.9/108.2 - 15" GRAVITY SEWER PIPE (SDR 35 PVC). INCLUDES TYPE A BEDDING AND HAUNCHING MATERIAL AND BACKFILL OF TRENCH WITH NATIVE MATERIALS MEETING 103.16 EARTH BACKFILL MATERIAL.
- 333 102.9/108.2 - 4" SEWER SERVICE PIPE (SDR 35 PVC). INCLUDES TYPE A BEDDING AND HAUNCHING MATERIAL. BACKFILL OF TRENCH WITH NATIVE MATERIALS MEETING 103.16 EARTH BACKFILL MATERIAL.
- 350 102.9/108.3 - 15" x 4" SEWER SERVICE TAP. FULL BODY WYE (SEE STD. DETAIL SS-06).
- 354 104.20 - INSTALL 2-WAY SANITARY SEWER SERVICE CLEANOUT (STD. DETAIL SS-07). INCLUDES CLEANOUT RING AND COVER AND CONCRETE COLLAR IN UNPAVED AREAS (SEE STD. DETAIL SS-07).
- 358 103 - CLAY CUT-OFF WALL (INCIDENTAL TO SEWER INSTALLATION PAY ITEM)
- 363 BYPASS PUMPING (AS DEEMED NECESSARY BY THE CITY OR CONTRACTOR)
- 364 CONNECT TO EXISTING SEWER PIPE. THE CONTRACT PRICE FOR SEWER PIPE SHALL INCLUDE THE COST OF CONNECTION TO EXISTING PIPELINE.
- 365 CONNECT TO EXISTING SEWER MANHOLE. THE CONTRACT PRICE FOR SEWER PIPE SHALL INCLUDE THE COST OF CONNECTION TO EXISTING MANHOLE.
- 663 304 - AGGREGATE BASE COURSE (CLASS 6) (6" THICK)
- 664 304 - AGGREGATE BASE COURSE (CLASS 6) (12" THICK)
- 677 401.08 - HOT BITUMINOUS PAVEMENT (2" THICK) (GRADING SX, BINDER GRADE PG 64-22) (ONE 2" LIFTS)
- 680 401.08 - HOT BITUMINOUS PAVEMENT (PATCHING) (2" THICK) (GRADING SX, BINDER GRADE PG 64-22, GYR = 75) (ONE 2" LIFT TOP MAT) (T-TOP PATCH) (SEE CITY STD. DETAIL GU-03)
- 786 EROSION CONTROL LOG
- 826 PROTECT EXISTING UTILITY LINE IN PLACE.



NOTE: CONTRACTOR SHALL VERIFY SEWER SERVICE LOCATIONS BEFORE REPLACING PIPE.

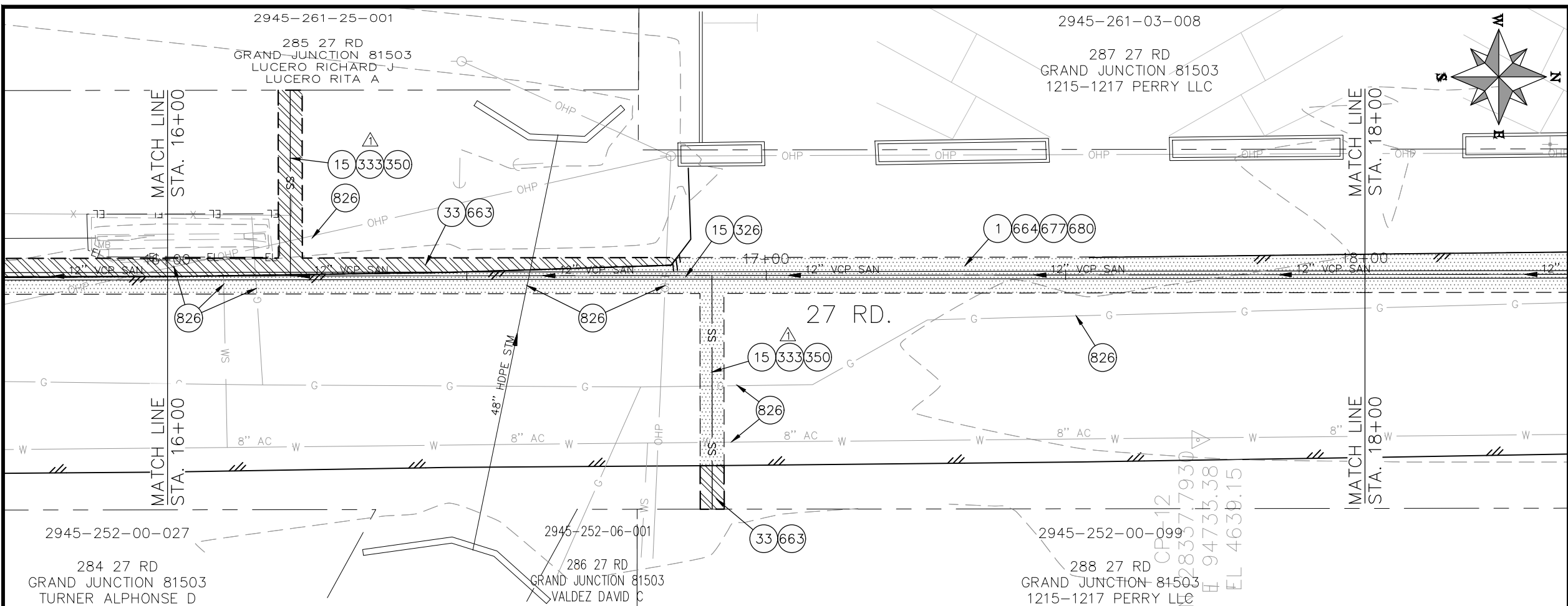
REVISION	NOTE	DATE	PROJECT NO.	DATE
REVISION Δ	NOTE REVISION	5/4/2023	F001642	09/2022
REVISION Δ	XXX	202X		09/2022
REVISION Δ	XXX	202X		09/2022
REVISION Δ	XXX	202X		09/2022

DESCRIPTION	DATE	SCALE
DRAWN BY DJM	09/2022	HORIZONTAL: 1" = 20'
DESIGNED BY DJM	09/2022	VERTICAL: 1" = 5'
CHECKED BY IRT	09/2022	
APPROVED BY KH	09/2022	

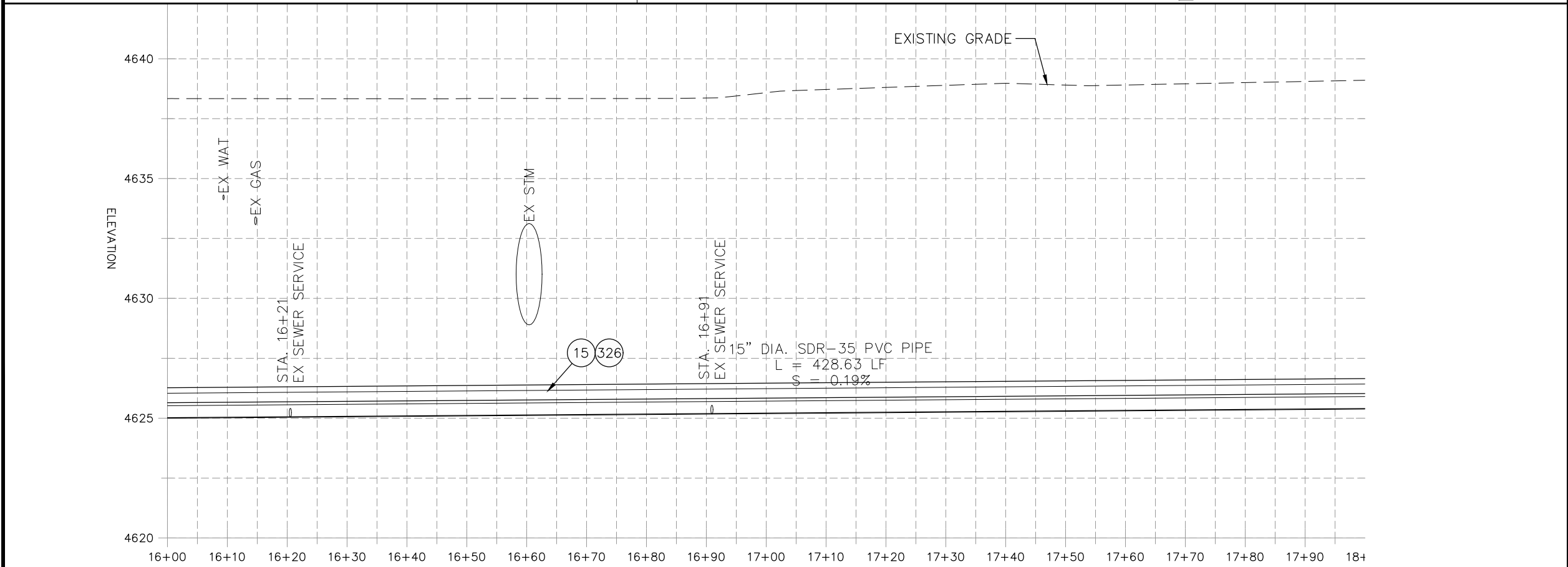


PUBLIC WORKS  
ENGINEERING DIVISION

2022 SEWER LINE REPLACEMENT  
27 ROAD PLAN AND PROFILE  
STA 14+00 TO STA 16+00



- CONSTRUCTION NOTES**
- ① 202 - REMOVAL OF ASPHALT MAT. CUT AND REMOVE ASPHALT AS SHOWN. (INDICATED BY DOT HATCH PATTERN)
  - 15 202 - REMOVAL OF PIPE AS SHOWN. (SIZE AND TYPE AS SHOWN ON PLAN)
  - 33 202 - REMOVE EXISTING SURFACE MATERIAL.
  - 326 102.9/108.2 - 15" GRAVITY SEWER PIPE (SDR 35 PVC). INCLUDES TYPE A BEDDING AND HAUNCHING MATERIAL AND BACKFILL OF TRENCH WITH NATIVE MATERIALS MEETING 103.16 EARTH BACKFILL MATERIAL.
  - 333 102.9/108.2 - 4" SEWER SERVICE PIPE (SDR 35 PVC). INCLUDES TYPE A BEDDING AND HAUNCHING MATERIAL, BACKFILL OF TRENCH WITH NATIVE MATERIALS MEETING 103.16 EARTH BACKFILL MATERIAL.
  - 350 102.9/108.3 - 15" x 4" SEWER SERVICE TAP. FULL BODY WYE (SEE STD. DETAIL SS-06).
  - 354 104.20 - INSTALL 2-WAY SANITARY SEWER SERVICE CLEANOUT (STD. DETAIL SS-07). INCLUDES CLEANOUT RING AND COVER AND CONCRETE COLLAR IN UNPAVED AREAS (SEE STD. DETAIL SS-07).
  - 663 304 - AGGREGATE BASE COURSE (CLASS 6) (6" THICK)
  - 664 304 - AGGREGATE BASE COURSE (CLASS 6) (12" THICK)
  - 677 401.08 - HOT BITUMINOUS PAVEMENT (2" THICK) (GRADING SX, BINDER GRADE PG 64-22) (ONE 2" LIFTS)
  - 680 401.08 - HOT BITUMINOUS PAVEMENT (PATCHING) (2" THICK) (GRADING SX, BINDER GRADE PG 64-22, GYR = 75) (ONE 2" LIFT TOP MAT) (T-TOP PATCH) (SEE CITY STD. DETAIL GU-03)
  - 826 PROTECT EXISTING UTILITY LINE IN PLACE.



EXISTING GRADE

NEW 15" DIA. SDR-35 PVC PIPE  
L = 428.63 LF  
S = 0.19%

NOTE:  
CONTRACTOR SHALL VERIFY SEWER SERVICE LOCATIONS BEFORE REPLACING PIPE.

REVISION	NOTE	DATE
REVISION Δ	NOTE REVISION	5/4/2023
REVISION Δ	XXX	202X
REVISION Δ	XXX	202X
REVISION Δ	XXX	202X

DESCRIPTION	DATE
PROJECT NO. F001642	
DRAWN BY DJM	DATE 09/2022
DESIGNED BY DJM	DATE 09/2022
CHECKED BY TRT	DATE 09/2022
APPROVED BY KH	DATE 09/2022

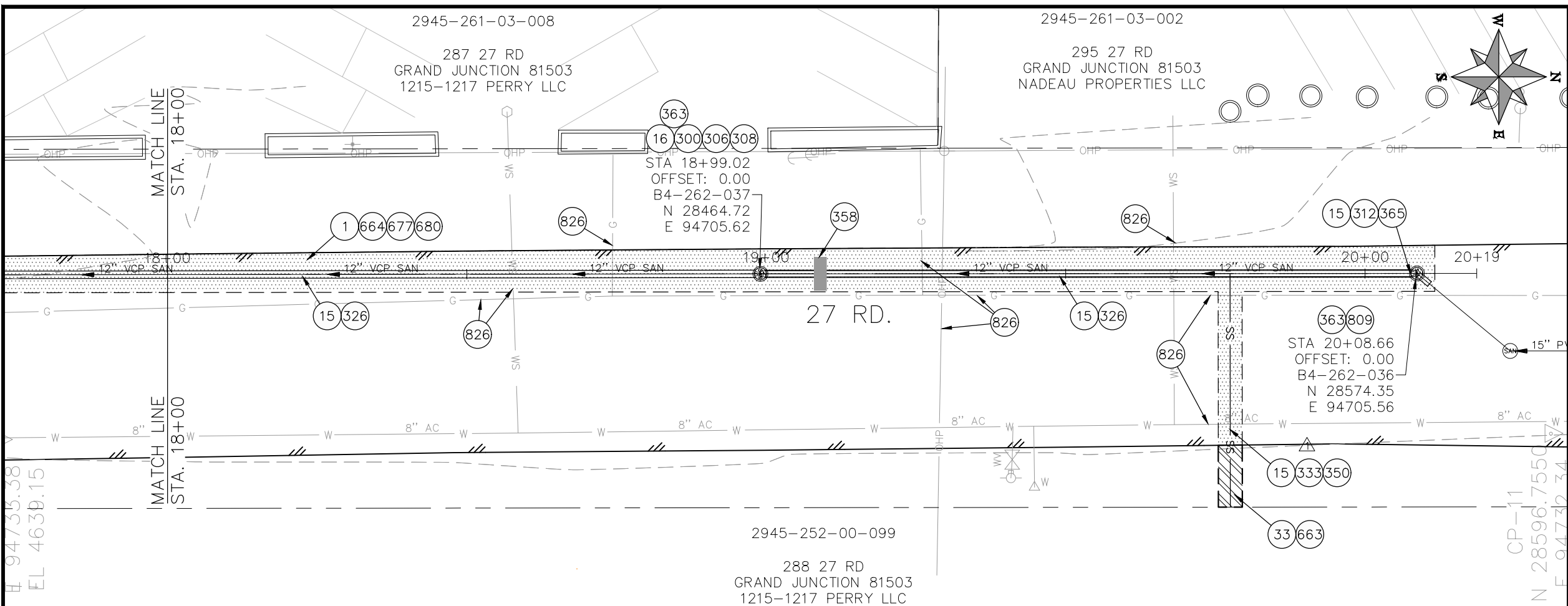
SCALES: PLAN & PROFILE	
HORIZONTAL: 1" = 20'	0 5 10 20
VERTICAL: 1" = 5'	0 1.25 2.5 5



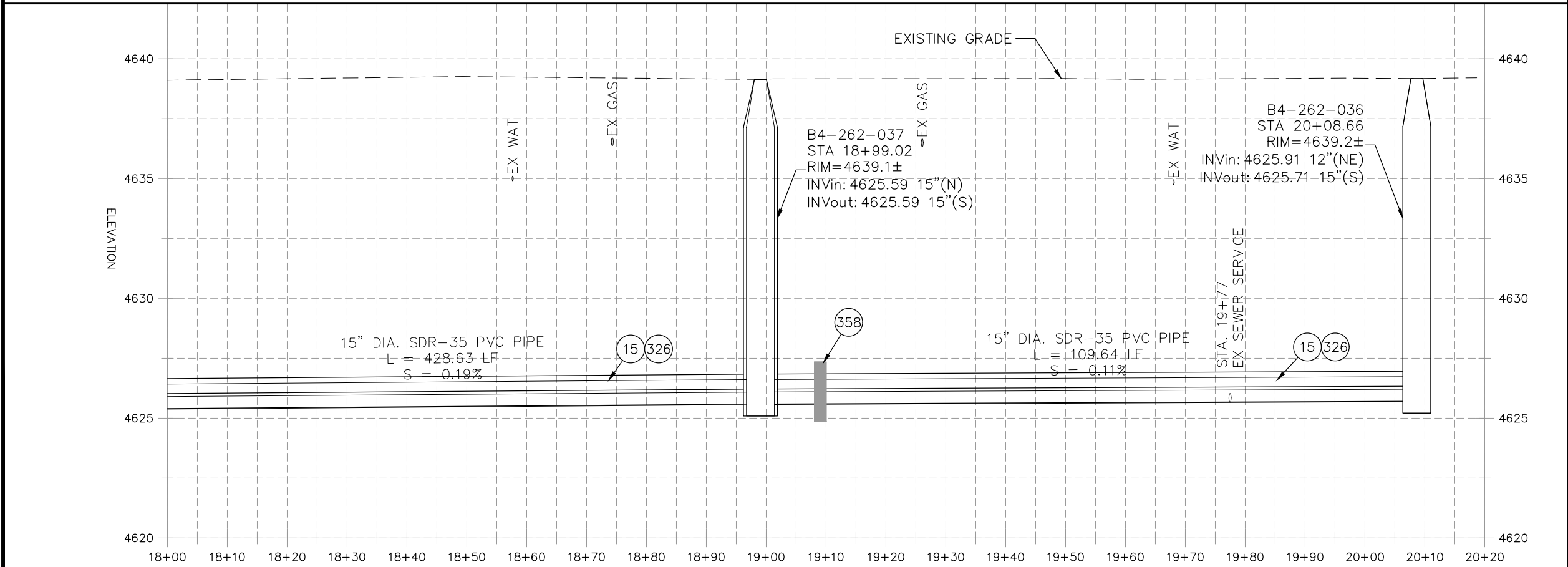
**PUBLIC WORKS  
ENGINEERING DIVISION**

**2022 SEWER LINE REPLACEMENT  
27 ROAD PLAN AND PROFILE  
STA 16+00 TO STA 18+00**





- CONSTRUCTION NOTES
- 1 202 - REMOVAL OF ASPHALT MAT. CUT AND REMOVE ASPHALT AS SHOWN. (INDICATED BY DOT HATCH PATTERN)
  - 15 202 - REMOVAL OF PIPE AS SHOWN. (SIZE AND TYPE AS SHOWN ON PLAN)
  - 16 202 - REMOVAL OF MANHOLE. CONTRACTOR SHALL SALVAGE RING AND COVER AND DELIVER TO CITY SHOPS
  - 300 102.11/108.5 - SANITARY SEWER BASIC MANHOLE (60" I.D.). INCLUDES CONNECTION OF ADJACENT SEWER LINE, FORMING INVERTS AND ADJUSTING TO FINAL GRADE. (SEE CITY OF GRAND JUNCTION STANDARD DETAIL SS-02).
  - 306 102.11/108.5 - MANHOLE BARREL SECTION (D>5) (60" I.D.).
  - 308 102.11/108.5 - MANHOLE INTERIOR CORROSION PROTECTION (CASTAGRA ECODUR 201 PROTECTIVE COATING OR APPROVED EQUAL) (PROTECTIVE COATING SHALL BE APPLIED TO PREPARED MANHOLE INVERT, BENCH, BARRELS, AND CONE SECTIONS. MANHOLE INVERTS AND BENCHES SHALL BE COATED PRIOR TO WASTEWATER INTRODUCTION)
  - 312 102.11/108.5 - CONNECT TO EXISTING MANHOLE (15" PIPE). (SEE CITY OF GRAND JUNCTION STANDARD DETAIL SS-08).
  - 326 102.9/108.2 - 15" GRAVITY SEWER PIPE (SDR 35 PVC). INCLUDES TYPE A BEDDING AND HAUNCHING MATERIAL AND BACKFILL OF TRENCH WITH NATIVE MATERIALS MEETING 103.16 EARTH BACKFILL MATERIAL.
  - 333 102.9/108.2 - 4" SEWER SERVICE PIPE (SDR 35 PVC). INCLUDES TYPE A BEDDING AND HAUNCHING MATERIAL. BACKFILL OF TRENCH WITH NATIVE MATERIALS MEETING 103.16 EARTH BACKFILL MATERIAL.
  - 350 102.9/108.3 - 15" x 4" SEWER SERVICE TAP. FULL BODY WYE (SEE STD. DETAIL SS-06).
  - 358 103 - CLAY CUT-OFF WALL (INCIDENTAL TO SEWER INSTALLATION PAY ITEM)
  - 363 BYPASS PUMPING (AS DEEMED NECESSARY BY THE CITY OR CONTRACTOR)
  - 365 CONNECT TO EXISTING SEWER MANHOLE. THE CONTRACT PRICE FOR SEWER PIPE SHALL INCLUDE THE COST OF CONNECTION TO EXISTING MANHOLE.
  - 664 304 - AGGREGATE BASE COURSE (CLASS 6) (12" THICK)
  - 677 401.08 - HOT BITUMINOUS PAVEMENT (2" THICK) (GRADING SX, BINDER GRADE PG 64-22) (One 2" LIFTS)
  - 680 401.08 - HOT BITUMINOUS PAVEMENT (PATCHING) (2" THICK) (GRADING SX, BINDER GRADE PG 64-22, GYR = 75) (ONE 2" LIFT TOP MAT) (T-TOP PATCH) (SEE CITY STD. DETAIL GU-03)
  - 809 PROTECT MANHOLE
  - 826 PROTECT EXISTING UTILITY LINE IN PLACE.
- NOTE: CONTRACTOR SHALL VERIFY SEWER SERVICE LOCATIONS BEFORE REPLACING PIPE..



REVISION	NOTE	DATE
REVISION Δ	NOTE REVISION	5/4/2023
REVISION Δ	XXX	202X
REVISION Δ	XXX	202X
REVISION Δ	XXX	202X

DESCRIPTION	DATE
PROJECT NO. F001642	
DRAWN BY DJM	09/2022
DESIGNED BY DJM	09/2022
CHECKED BY IRT	09/2022
APPROVED BY KH	09/2022

SCALES: PLAN & PROFILE	
HORIZONTAL: 1" = 20'	0 5 10 20
VERTICAL: 1" = 5'	0 1.25 2.5 5



PUBLIC WORKS  
ENGINEERING DIVISION

2022 SEWER LINE REPLACEMENT  
27 ROAD PLAN AND PROFILE  
STA 18+00 TO STA 20+20