

1962



BUDGET

CITY COUNCIL

Ed McCormick, President
District D

Harry O. Colescott
District A

Warren D. Lowe
District E

Ray A. Meacham
District B

Herbert M. Wright
At Large

Charles H. Love
District C

Arthur Hadden
At Large

ADMINISTRATIVE OFFICIALS

Joe M. Lacy,
City Manager

Gerald J. Ashby
City Attorney

John A. Burton
Utilities Director

Helen C. Tomlinson
City Clerk

Karl M. Johnson
Chief of Police

Fred E. Hagie
Finance Director

Frank Kreps
Fire Chief

Donald H. Warner
Development Director

Ralph Stocker
Parks Director

Carl A. Alstatt
Public Works Director

Paul H. Swoboda
Recreation Director

Jerome P. Fossenier
City Engineer

Louise Floyd
Head Librarian

CONTENTS

	<u>Subject</u>	<u>Account</u>	<u>Page</u>
PART I:	INTRODUCTION AND BUDGET MESSAGE (yellow pages)		
	Using the City Budget.....		1
	Budget Message.....		3
	Organization of G. J. City Gov't.....		7
	The 1962 Property Tax Dollar.....		8
	The 1962 Budget Dollar.....		9
	Comparative Totals for 1962.....		10
PART II:	REVENUE ESTIMATES (green pages)		
	Revenue Summary.....		11
	General Fund.....	100	12
	Water Fund.....	200	14
	Equipment Fund.....	300	14
	Sanitation Fund.....	400	15
	Sewer Fund.....	500	15
	Airport Fund.....	600	16
	Library Fund.....	700	17
	Cemetery Fund.....	800	17
	Lincoln Park Pool Fund.....	900	18
	Moyer Pool Fund.....	1000	18
	Park Improvement Fund.....	1100	19
	Land Fund.....	1200	19
	Stores Fund.....	1300	19
PART III:	EXPENDITURE ESTIMATES (white pages)		
	Department Summary.....		20
	Legislation & Counsel.....	10	21
	City Council.....	11	22
	City Attorney.....	12	23
	Planning & Zoning Commission.....	13	24
	Other Boards.....	14	25

CONTENTS (continued)

<u>Subject</u>	<u>Account</u>	<u>Page</u>
PART III: EXPENDITURE ESTIMATES (continued)		
Judiciary, Dept Summary.....	20	26
Municipal Court	21	27
Management, Dept Summary.....	30	28
Manager's Office	31	29
Records, Dept Summary.....	40	31
Administration & Personnel	41	32
Finance, Dept Summary.....	50	34
Administration & Finance	51	35
Purchasing & Property	52	37
Court Clerks	53	38
Stores Inventory	54	39
Development, Dept Summary.....	60	40
Administration & Planning	61	41
Inspection	62	43
Public Works, Dept Summary.....	70	44
Direction & Engineering	71	45
Streets & Drainage	72	47
Traffic Operations & Bldg Maint. (Inc. City Hall, General)	73	49
Equipment Shops	74	52
Sanitation	75	55
Airport	76	57
Utilities, Dept Summary.....	80	59
Direction & Billing	81	60
Utilities Systems	82	62
Water Supply	83	64
Water Plant	84	66
Sewer Plants	85	68
Police, Dept Summary.....	90	70
Direction & Traffic Engineering	91	71
Operations	92	72
Fire, Dept Summary.....	100	75
Direction	101	76
Operations	102	78

CONTENTS (continued)

	<u>Subject</u>	<u>Account</u>	<u>Page</u>
PART III: EXPENDITURE ESTIMATES (continued)			
	Parks & Recreation, Dept Summary.....	110	81
	Direction	111	82
	Parks	112	84
	Recreation	113	86
	Forestry	114	88
	Stadiums & Park Auditorium	115	89
	Golf Course	116	90
	Zoo	117	92
	Lincoln Park Pool	118	93
	Moyer Pool	119	95
	Cemeteries	120	97
	Park Improvement	121	99
	Library, Dept Summary.....	130	100
	Direction & Operations	131	101
	General Government, Dept Summary.....	140	103
	General Government	141	104
	Land Transactions	142	105
PART IV: SUPPORTING DATA (Blue pages)			
	Work Programs -- Public Works Dept.....		106
	Work Programs -- Utilities Dept.....		108
	Gen'l Obligation Bonds.....		110
	Water Bonds.....		111
	Other Revenue Bonds.....		112
	Mill Levy Comparison.....		113
	Budget Account Explanation.....		114
PART V: IMPLEMENTING DOCUMENTS (pink pages)			
	Salary Schedule Resolution.....		121
	Budget Adoption Resolution.....		124
	Tax Levying Resolution.....		125
	Tax Levy Certification.....		126
	Appropriation Ordinance.....		127

CITY OF GRAND JUNCTION, 1962 BUDGET

PART I

INTRODUCTION

and

BUDGET MESSAGE

USING THE CITY BUDGET

TOTALS AT THE TOP:

Totals of all columns appear at the top of the figures on the right side of the page opposite the title for each figure.

Figures underlined three times are the totals of those underlined twice; those underlined twice are totals of those underlined once, which in turn are totals of those not underlined at all. Underlining by broken lines indicates a sub-total. See example to the right.

Program Total	\$1,000.
Less adjustm't	- 200.
Sub-total	1,200.
	=====
Sub-Program	500.
Expenditure	50.
Item	40.
Item	10.
Expenditure	450.
Sub-Program	700.
Expenditure	300.
Expenditure	400.

THREE TYPES OF TRANSFERS:

Three types of transfers are used within the budget to be carried over into the accounting system. Each has particular characteristics and a definite purpose which cannot be served by either of the other two types of transfers.

General Transfers are transfers between funds annually to reimburse one fund for functions provided for its area of activity by a department financed from another fund. These transfers do not appear in the expenditure accounts but only in the REVENUE DETAIL estimates.

Example: Transfer of 10% of water revenues to the General Fund for general services such as accounting, purchasing, management, etc.

Special Transfers are transfers between funds for special purposes one year only OR annually according to a variable basis. Like General Transfers, special transfers do not appear in expenditure account but only in REVENUE DETAIL estimates.

Example: Transfer from the General Fund to the Airport Fund for capital improvement construction, or transfer from Sewer Fund to Water Fund for work by Utilities Systems Division on sewer lines.

Service Transfers are transfers between funds in the expenditure accounts for a specific service as it is rendered by one division to another. This transfer is used exclusively in handling the Stores and Equipment services and the transfers are made monthly according to stores activity and equipment use. Such service transfers do not appear in the revenue estimates, and are shown in the expenditure accounts preceded by a small "e" (for equipment) or "s" (for stores) in accounts from which they will be transferred. The totals of these transferable items are preceded by a capital "E" or "S", as appropriate, for further identification. These totals are clearly subtracted from the departments in which they appear since their component amounts have already been figured into the various using departments in which they appear.

PROGRAM SUMMARIES:

The summary at the beginning of each department is for comparison only and is not meant to be any part of the budgeting or accounting system. The figures shown in the Comparative Recap indicate the relationship of each department's expenditures as to proportion for personal services, operating expenses and capital outlay.

Personal Services is the total of all expenditure accounts beginning with .0, which includes all expenses connected with payroll.

Operating Expenses is the total of all expenditure accounts beginning with .1, which includes all expenses in the day-to-day operation of any department.

Capital Outlay is the total of all expenditure accounts beginning with .3, which includes special projects requiring large outlays for materials to be installed by City forces, capital improvements done normally by contract, and debt service which in all cases is the repayment for past capital improvements.

ILLEGAL TO SPEND IF NOT BUDGETED:

Section 82 of Article IX of the City Charter, page 23, prohibits the expenditure of City funds for any purpose not covered in the annual appropriation ordinance based on the annual City budget. The only exceptions to this provision are for expense, "the necessity of which is caused by any casualty accident or unforeseen contingency arising after the passage of the annual appropriation ordinance" and for special improvement districts. In either case, the unforeseen expenditure must be made by ordinance.

(SEE EXPLANATION OF BUDGET ACCOUNTS IN "SUPPORTING DATA" --
PAGES 114 - 120).

CITY OF GRAND JUNCTION, 1962 BUDGET

BUDGET MESSAGE

November 8, 1962

The Honorable Members of the City Council
Grand Junction, Colorado

Gentlemen:

Submitted herewith is the proposed budget for the City of Grand Junction for the calendar and fiscal year of 1962. This document has been prepared in compliance with Article VII, Section 59 of the City Charter.

THE COMING YEAR -- GENERALLY

The 1962 budget as proposed anticipates continuing the level of municipal services as they are at present. The level of service in the City of Grand Junction is somewhat above the average for cities of its size throughout the state and seems to be what the citizens demand.

The budget total of \$2,385,601.00 (assuming "Operation Foresight" is undertaken) reflects a drop from the total 1961 budget of \$2,441,509.00. It is also a substantial drop from the actual expenditures in 1960 of \$2,443,759.74.

The drop is due primarily to the using up of the final bond revenue for a micro-strainer plant in 1961 from the water bond issue in 1955. In addition, the money that the City and County both appropriated in 1959 and 1960 for airport construction which was carried over in 1961 caused the 1960-1961 figures to be higher than that proposed for 1962.

City operations in 1961 appear to be going substantially as budgeted. Department heads and accounting personnel have become familiar with the new budgeting system and, apart from some refinements, the budget format for 1962 will be substantially the same as that used in 1961.

REVENUE SOURCES

The only significant change in the general fund revenue picture is an estimated increase of approximately \$34,000.00 in property tax revenue. This is because the 160-acre Fruitvale annexation of 1960 begins to pay taxes for the first time in 1962. The sanitation fund shows an estimated drop in revenue of \$25,000.00 because of the lower rate structure adopted in 1961 and made possible by the many changes made in the system in order to provide a better service at the lower cost.

BUDGET MESSAGE (continued)

Operating revenue at the airport should increase substantially because of the new floor space rental structure possible with the completion of the airport tower. However the increase in revenue is equally off-set by additional expenses to care for and maintain the new tower building and the existing terminal building. Airport revenues, as usual, are not sufficient for capital improvements at the facility without additional assistance from City and County capital improvement funds.

PERSONAL SERVICES

The first annual committee of employee representatives met during the late summer of 1961 and reviewed existing and proposed personnel regulations. This effort was a great assistance to the Manager and Personnel Director in recommending an over-all personnel program for City employees. The following headings reflect the financial results of these meetings as well as additional recommendations by the Manager:

Longevity Increases. Of the total 175 permanent employees of the City, 114 of them will receive pay increases ranging from \$3.00 to \$13.00 per month because of the salary system inaugurated by the Council with the 1961 budget. The total additional amount of money budgeted because of these raises is \$8,688.00.

Reclassification. Position classification was put off by the employees' committee at the Manager's request pending a survey by the State Employment Department. This work is scheduled by early 1962 to be completed for consideration by the 1962 committee. Some very definite changes were obviously needed however, and therefore seven positions are recommended for reclassification based on the annual analysis of salaries and wages for comparable work in the Grand Junction area. The titles of these positions and the range change proposals are as follows and would cost a total of \$1,008.:

Field Engineer,	from	7	to	8
Office Engineer,	"	7	"	8
Equipment Supervisor,	"	11	"	12
Recreation Director,	"	13	"	14
Development Director,	"	13	"	14
City Engineer,	"	13	"	15
Parks Director,	"	14	"	15

BUDGET MESSAGE (continued)

New Personnel. Along with the reassignment of some personnel, there is proposed an addition of eight employees to the City payroll over the total number in 1961. (One of these, the Project Engineer, would not be added unless "Operation Foresight" is undertaken). The new positions needed are four firemen for a total increase of \$16,272., three police clerk-dispatchers for a total of \$10,908., and a project engineer for a total cost of \$6,000.

Fringe Benefits. The Employees Committee studied alternative benefits and recommended that the City pay for 25% of each employee's Blue Cross-Blue Shield monthly premium and a group life insurance policy in which the City would pay half of the monthly premium. These two items are estimated to cost \$6,142. for health insurance and \$3,374. for life insurance.

In addition, recommended changes for additional time worked in those departments which are not now entitled to any additional pay (police for court time, firemen for "call-back" time, and white collar employees for additional time) are scheduled for compensatory provisions amounting to approximately \$1,800.

The total financial budget increases because of personal services as noted above would be \$54,192.

OPERATING EXPENSES

Budget accounts in the area of operating expenses show a moderate increase caused primarily by each department doing a greater amount of work and the usual slight increase in costs for materials and supplies. Continued efforts of our purchasing department to buy most efficiently and frugal use by departments should be credited for keeping this increased cost quite moderate.

CAPITAL OUTLAY

You will note that certain departments have alternate "A" and "B" budgets included. All amounts followed by a capital "A" are those that would be in effect if "Operation Foresight" is set into motion by two improvement districts prior to December 31, 1961. Alternate "B" is the budget account that would be in effect if "Operation Foresight" is not undertaken.

Department heads have prepared initial forms estimating capital improvements needed in each department within the next six years. The development department will assist the planning commission in further refining these requests and placing them in a recommended priority order for Council consideration of a long-range capital improvement budget.

In 1961 the City budget procedure began setting aside capital funds in areas known to be most critical. Such items as replacement of water lines, new central fire station, future equipment purchases, sewer plant expansion, etc. were therefore budgeted for "accrual" in

BUDGET MESSAGE (continued)

1961. The same procedure is used in the 1962 budget. The inauguration of capital improvements long-range budgeting will clearly show whether the amounts being set aside are realistic or not. It is felt that they are quite inadequate for the improvements the public is beginning to demand.

ADMINISTRATIVE JOBS AHEAD

The reorganized finance department has not been able to undertake full property inventory procedures in 1961. However it is felt that this will be undertaken in early 1962. In addition, quarterly appropriation forms and controls will be inaugurated with the 1962 fiscal year. These were designed for use in 1961 but stress of other business, namely, inaugurating the budget and report system caused by it, required additional efforts.

Performance report forms will be designed in the fall of 1961 to go into effect on January 1, 1962. These forms will give the administration and the Council a month-to-month picture that is related directly to the budget showing what work is undertaken and what unit costs actually are.

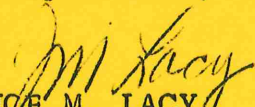
A LONG-RANGE LOOK

In comparison with other cities of our region, the City of Grand Junction is able to provide a relatively high level of service for its citizens. In exchange for this, the citizens have acquiesced in a financial structure which is felt to be relatively progressive. Notable is the charge for sanitation service on a fee basis rather than from the property tax and the use of parking meters to help lighten the property tax load. However Mesa County as a whole draws a higher percentage of the effective buying power from its citizens for taxation than other large population areas in the state, such as Denver, Jefferson, Arapahoe, Pueblo, and El Paso Counties.

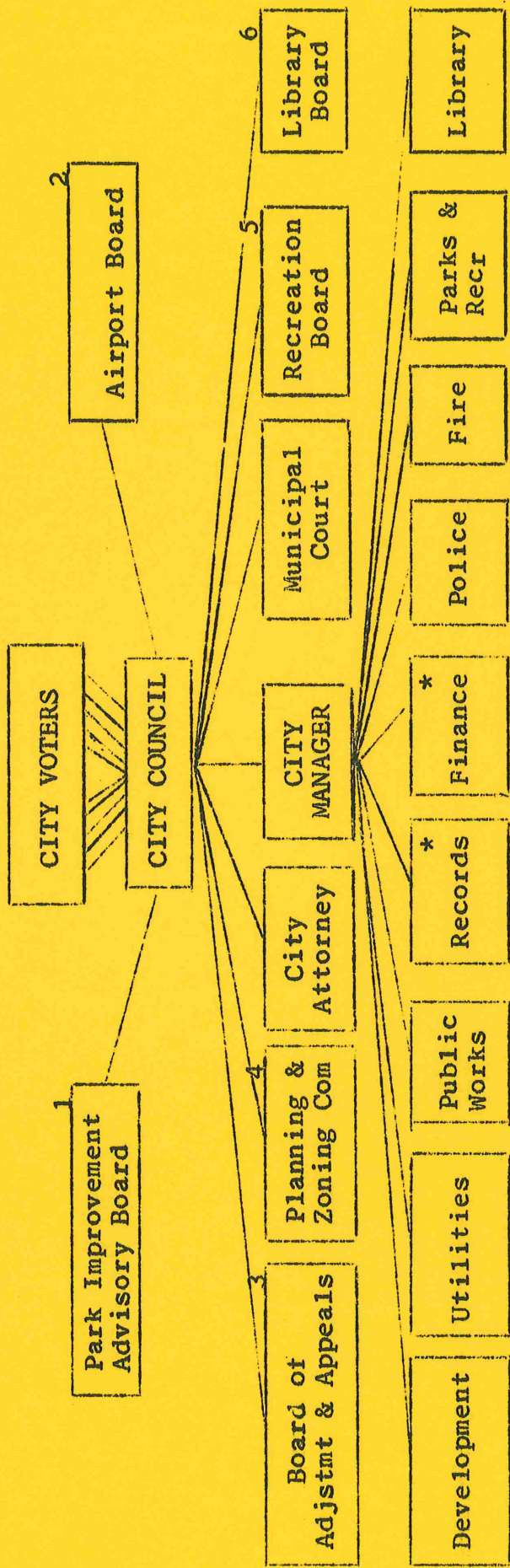
However it is most important to note that the City controls only 23% of this total mill levy, while education financing generates over 58% of the burden. With the advent of a metropolitan sales tax in the Denver area it would seem that City and County fathers should begin thinking of a similar move to lower both the City and County mill levy as well as provide money for increased capital improvements. Both of these areas would help make our region more attractive for industrial development as well as provide a measure of governmental tax relief to our citizens.

Another area of municipal activity which makes sound planning very difficult is the annexation law under which the state now operates. Efforts were made in the 1961 Legislature to change the annexation statute but were vetoed at the eleventh hour by the Governor. New efforts for a joint incorporation-annexation standard law are now underway, and full cooperation of City taxpayers and legislators is vital in formulating realistic legislation to provide for realistic planning.

Respectfully submitted,


JOE M. LACY
City Manager

ORGANIZATION OF GRAND JUNCTION CITY GOVERNMENT

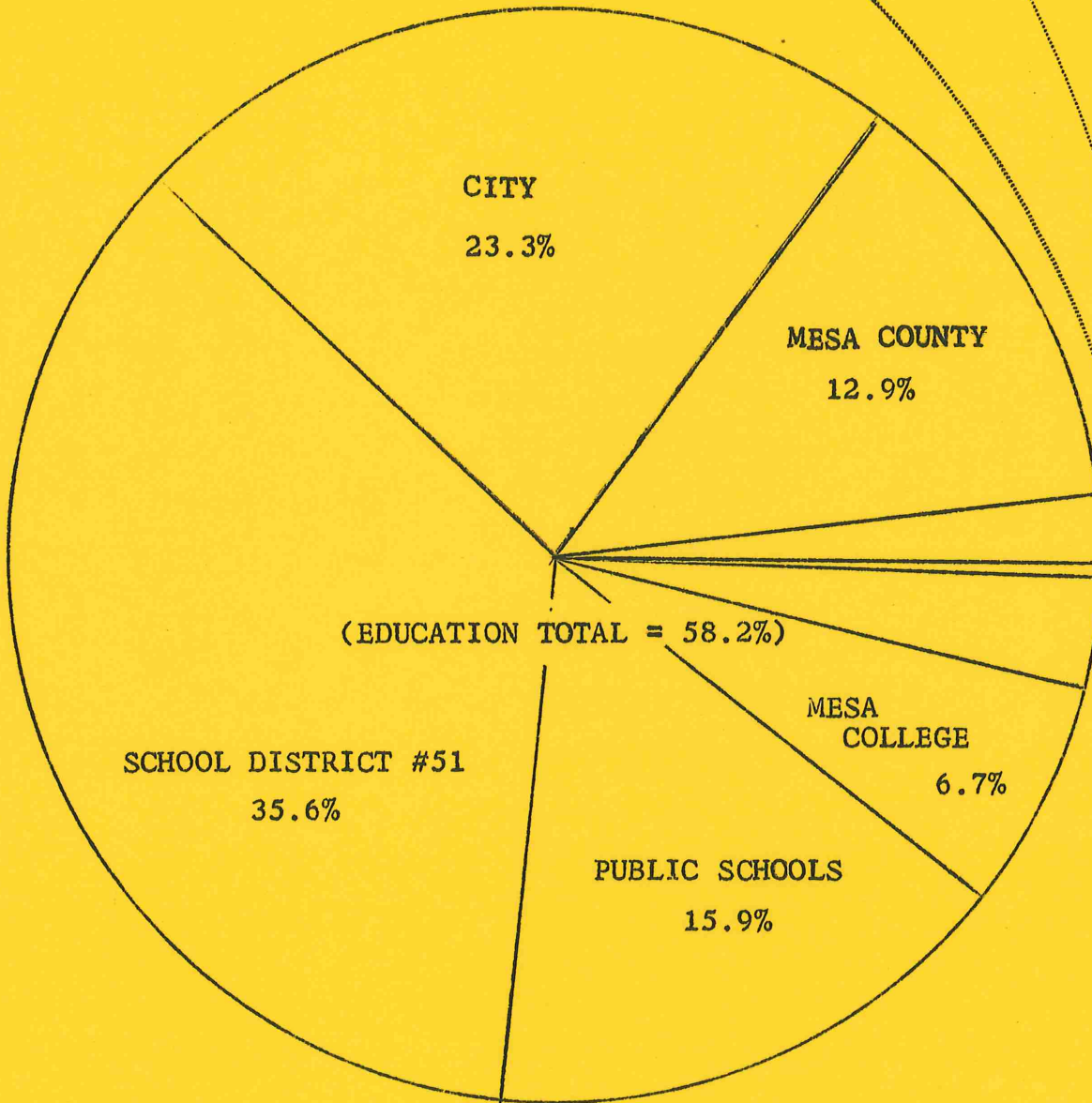


NOTES:

1. Cooperative Board including City, County, School Dist. 51, and Mesa College. One Councilman sits on five-man Board. City Manager is secretary.
 2. Cooperative Board including City and County. Three Councilmen serve as members with all other Councilmen as alternates.
 3. A five-member Board organized by the Zoning Ordinance. All members are "lay citizens". Further appeal is to Court of record only.
 4. A seven-member Commission organized by the Zoning Ordinance. Two Councilmen serve on the Commission which advises Council on all City development.
 5. A five-member Board including one Councilman to advise Council on Recreational matters.
 6. A five -member Board including one Councilman to advise Council on Library matters.
- * City Clerk and City Treasurer are appointed by the City Council.

THE 1962 PROPERTY TAX DOLLAR
for City Taxpayers

Grand Junction Drainage Dist. 3.4%
Colo. River Cons. Dist. .3%
State of Colo. 1.9%

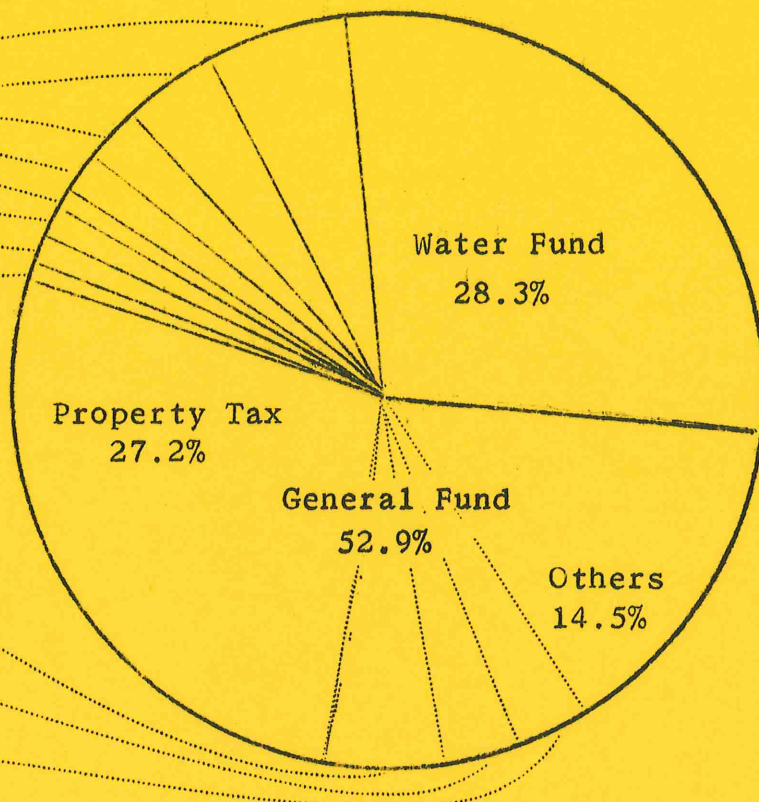


THE 1962 BUDGET DOLLAR

--- WHERE IT COMES FROM ---

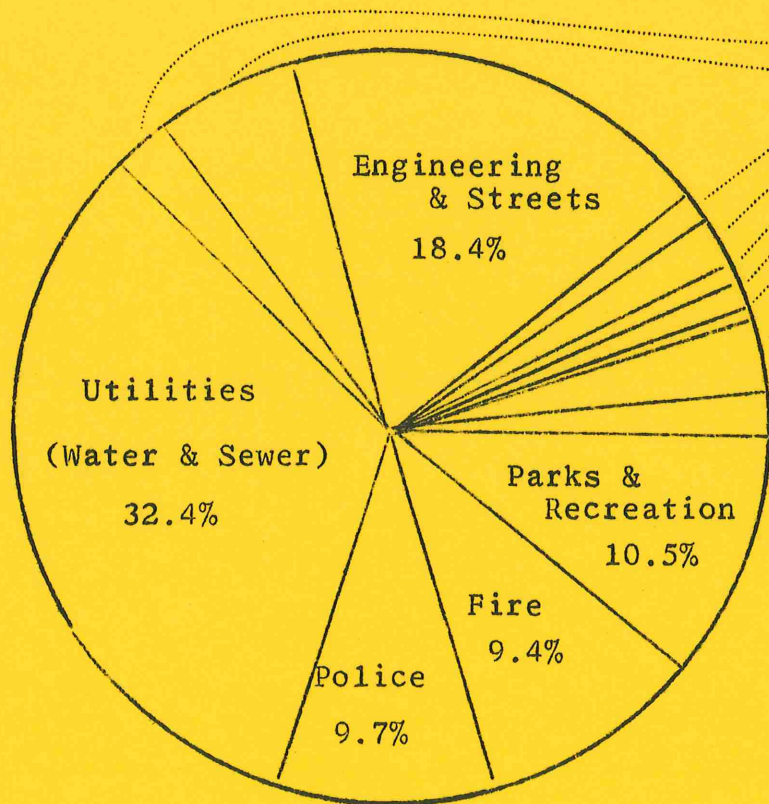
Sanitation Fund.....	6.1%
Sewer Fund.....	4.1%
Airport Fund.....	2.5%
Library Fund.....	1.9%
Cemetery Fund.....	1.0%
Swim Pool Funds.....	1.3%
Park Impr Funds.....	1.3%
Land Fund.....	0.6%

Carryover.....	5.1%
Hwy Users Tax.....	3.1%
Parking Meters.....	3.0%



--- WHERE IT GOES ---

Airport.....	2.5%
Sanitation.....	6.1%
Development.....	1.3%
Finance.....	2.1%
Records.....	0.9%
Management.....	0.8%
Legis & Judc'y...	0.9%
Gen'l Gov't.....	3.0%
Library.....	1.9%



CITY OF GRAND JUNCTION, 1962 BUDGET

PART II

REVENUE

ESTIMATES

CITY OF GRAND JUNCTION, 1962 BUDGET

COMPARATIVE SUMMARY

EXPLANATION:

This comparative summary presents a picture of the 1962 budget compared to the 1961 budget and actual expenses in 1960. It is interesting to note that in 1960, personal services accounted for 41.7% of the total budget. In the 1961 budget this figure was 37.7% and in 1962 is proposed at 40.7%.

<u>COMPARATIVE RECAP:</u>	Actual 1960	Budget 1961	Budget 1962
<u>Supporting Funds:</u>	\$2,069,684.96	\$2,411,509.	(\$2,385,601.)A (\$2,360,601.)B
General Fund	984,279.82	1,132,220	(1,261,864.)A (1,236,864.)B
Water Fund	683,505.45	708,050.	674,266.
Equipment Fund*	* 120,423.22	* 149,574.	* 201,637.
Sanitation Fund	141,146.97	155,372.	144,694.
Sewer Fund	103,861.09	93,120.	98,987.
Airport Fund	66,087.54	194,388.	60,327.
Library Fund	38,158.59	42,652.	45,854.
Cemetery Fund	19,282.22	20,979.	22,708.
L. P. Pool Fund	20,828.65	20,575.	20,970.
Moyer Pool Fund	10,394.21	10,953.	11,166.
Park Improve. Fund	none	19,200.	31,255.
Land Fund	2,140.42	14,000.	13,510.
Stores Fund*	*289,638.19	*unbudgeted	*69,171.
<u>Expenditures:</u>	\$2,069,684.96	\$2,411,509.	(\$2,385,601.)A (\$2,360,601.)B
Personal Services	887,115.93	943,419.	(1,013,409.)A (1,007,409.)B
Operating Exp*	506,982.92	*636,681.	* (675,889.)A * (681,589.)B
Capital Outlay	675,586.11	831,409.	(696,303.)A (671,603.)B

*Equipment & Stores Funds amounts are shown for comparison only. These two amounts are NOT included in the totals at the top since all revenues in those two funds come from other departments as service fees.

*These amounts include "Operating Capital" which for 1962 totals \$91,100. This money must be carried forward each year to finance the first two months' operation.

CITY OF GRAND JUNCTION, 1962 BUDGET

REVENUE SUMMARY

Account	Expenditure	Actual 1960	Estimate 1961	Budget 1962
TOTAL, ALL FUNDS		\$2,069,684.96	\$2,441,835.	(\$2,385,601.)A (\$2,360,601.)B
100	General Fund	984,279.82	1,186,287.	(1,261,864.)A (1,236,864.)B
200	Water Fund	683,505.45	710,654.	674,266.
300	Equipment Fund	* -0-	* -0-	* -0-
400	Sanitation "	141,146.97	178,435.	144,694.
500	Sewer Fund	103,861.09	102,907.	98,987.
600	Airport Fund	66,087.54	115,377.	60,327.
700	Library Fund	38,158.59	44,472.	45,854.
800	Cemetery Fund	19,282.22	28,616.	22,708.
900	L. P. Pool Fund	20,828.65	21,387.	20,970.
1000	Moyer Pool Fund	10,394.21	9,099.	11,166.
1100	Park Imp Fund	none	22,492.	31,255.
1200	Land Fund	2,140.42	22,109.	13,510.
1300	Stores Fund	* -0-	* -0-	* -0-

*All Revenues for the Equipment & Stores Funds are supplied by the other Funds in proportion to Equipment Services used.

CITY OF GRAND JUNCTION, 1962 BUDGET

REVENUE DETAIL

Account	SOURCE OF REVENUES	Actual 1960	Estimate 1961	Budget 1962
TOTAL REVENUES, ALL FUNDS		\$2,443,759.74	\$2,441,835.	(\$2,385,601.)A (\$2,360,601.)B
100	GENERAL FUND	1,175,478.34	1,186,287.	(\$1,261,864.)A (\$1,236,864.)B
	Less Gen Trans to Libr Fnd	-	- 40,652.	- 42,034.
	Less Spec Trans to Airtpt Fnd	-	- 31,500.	- 2,000.
	Less Spec Trans, Park Imp Fnd	-	- 6,000.	- 6,000.
	Less Spec Trans, Cemetery Fnd	3,241.00	-	-
##	TOTAL REVENUES	\$1,178,719.34	\$1,264,439.	(\$1,311,898.)A (\$1,286,898.)B
##	Est Carryover	55,186.43	119,852.	121,000.
100.1	Property Tax (17.5 mills on assessed value of \$38,163,370. less 2% County collec- tion fee and 1% uncollected)	536,680.11	613,950.	647,823.
100.2	Highway Users Tax (state)	74,166.63	70,000.	75,000.
100.3	Parking Meters	72,873.92	73,000.	70,500.
100.3-1	On-Street Meters	65,273.47	65,000.	61,000.
100.3-2	Off-Street Meters	7,600.45	8,000.	9,500.
100.4	Gen Transfer from Wtr Fund (#200)	54,000.00	50,000.	49,000.
100.5	Cigarette Occupat'l Tax	48,191.92	45,000.	42,000.
100.6	Park & Rec Services	45,101.45	43,050.	47,000.
100.6-1	Golf Fees	21,529.05	22,600.	27,000.
100.6-2	Recre'tn Programs	16,204.56	10,450.	10,600.
100.6-3	Misc Services	2,428.42	2,250.	2,000.
100.6-4	Football Stadium	2,933.61	3,200.	3,500.
100.6-5	Baseball Stadium (Less \$1000. credit for Eagles Baseball program)	1,066.81	3,450.	3,000.
106.6-6	Lincoln Park Aud.	939.00	1,100.	900.

CITY OF GRAND JUNCTION, 1962 BUDGET

REVENUE DETAIL

(Cont'd)

Account	SOURCE OF REVENUES	Actual 1960	Estimate 1961	Budget 1962
100.7	Municipal Ct Fines	\$ 44,808.05	\$ 45,500.	\$ 43,000.
100.8	Automobile Tax	38,794.20	37,800.	37,000.
100.9	Gas & Elec Franchise	32,617.19	40,000.	40,000.
100.10	Licenses & Permits	28,223.55	25,500.	25,000.
100.11	Telephone Franchise	21,264.62	22,200.	22,000.
100.12	Street Cut Repairs	15,937.75	5,500.	8,000.
100.13	Rural Fire Dist.	12,000.00	14,400.	15,100.
100.14	Gen'l Trans from Sanit'n Fund (#400)	13,000.00	13,000.	6,100.
100.15	Gen'l Trans from Sewer Fund (#500)	49,500.00	9,200.	9,175.
100.16	Beer & Liquor Occupational Tax	7,581.00	7,500.	7,500.
100.17	Spec Trans from Airport Fnd (#76.01)	-	7,067.	3,680.
100.18	Liquor Tax (state)	6,035.00	6,800.	6,600.
100.19	Misc Collections	8,567.80	4,100.	1,000.
100.20	Hwy Maintenance (state)	3,323.16	3,300.	3,300.
100.21	Int fr Investments	6,964.41	2,900.	2,500.
100.22	Prisoner care (County)	3,110.25	2,200.	2,000.
100.23	Weed Program collections	-	1,500.	1,500.
100.24	Rent on Old Shops Bldg	120.00	720.	720.
100.25	Dog Pound	671.90	400.	400.
100.26	Engineering Fees	-	-	(25,000.)A

CITY OF GRAND JUNCTION, 1962 BUDGET

REVENUE DETAIL

Account	SOURCE OF REVENUE	Actual 1960	Estimated 1961	Budget 1962
200	WATER FUND	\$278,815.41	\$710,654.	\$674,266.
	Less Gen'l Trans to General Fnd (10% of Water Sales)	- 54,000.00	- 50,000.	- 49,000.
##	TOTAL REVENUE	<u>\$782,815.41</u>	<u>\$760,654.</u>	<u>\$723,266.</u>
##	Bst Carryover	258,426.66	217,704.	188,816.
200.1	Water Sales inside City (496,089.80	354,000.	354,000.
200.2	Wtr Sales outside City (-	136,000.	136,000.
200.3	Spec Trans from Sewer Fund (#500)	-	27,600.	18,350.
200.4	Int on Invested Funds	13,915.13	6,000.	6,000.
200.5	Water Tap Charges	7,015.99	12,000.	7,500.
200.6	Water Bill Deposits	3,997.72	3,100.	3,000.
200.7	Water Meter & parts sales	3,089.75	3,800.	3,000.
200.8	Spec Transfer from Sanitation Fnd (#400)	-	-	6,100.
200.9	Miscellaneous	280.36	450.	500.
300	EQUIPMENT FUND	-0-	-0-	-0-
	Less Service transfers from Other Funds. (Via Equipment Rentals, 1962)	-\$129,938.47	-\$150,000.	-\$165,637
	Less Service transfers from Other Funds. (Via Equipment Rentals & misc carried over)	- 39,981.53	- 51,849.	- 36,000.
##	TOTAL REVENUES	<u>\$169,920.00</u>	<u>\$201,849.</u>	<u>\$201,637.</u>
##	Estimated Carryover	39,981.53	46,849.	35,000.
300.1	Equipment Rentals	129,938.47	150,000.	165,637.
300.2	Miscellaneous	-	5,000.	1,000.

CITY OF GRAND JUNCTION, 1962 BUDGET

REVENUE DETAIL

Account	SOURCE OF REVENUE	Actual 1960	Estimate 1961	Budget 1962
400	SANITATION FUND	\$184,844.26	\$178,435.	\$144,694.
	Less General Trans to Genl Fund (5% of Collection Charges)	-	- 13,000.	- 6,100.
	Less General Trans to Water Fund (5% of Collection Charges)	-	-	- 6,100.
##	TOTAL REVENUE	<u>\$184,844.26</u>	<u>\$191,435.</u>	<u>\$156,894.</u>
##	Estimated Carryover	43,632.35	44,435.	34,894.
400.1	Collection Charges	141,211.91	147,000.	122,000.
500	SEWER FUND	\$ 96,568.57	\$102,907.	\$ 98,987.
	Less Genl Trans to General Fund (10% of Sewer Use Charges)	- 49,500.00*	- 9,200.	- 8,800.
	Less Spec Transfer to Water Fnd (20% of Sewer Use Charges)	-	- 27,600.	- 17,600.
	(Approx percent of Materials & Labor by Utility Systems Division used for Sewer maint.)			
##	TOTAL REVENUE	<u>\$146,068.57</u>	<u>\$139,707.</u>	<u>\$125,387.</u>
##	Estimated Carryover	56,015.30	42,207.	33,637.
500.1	Sewer Use Charges	82,422.97	89,000.	88,000.
500.2	Sewer Tap Charges	2,473.11	2,200.	2,200.
500.3	Interest on Investments	1,476.60	1,500.	1,500.
500.4	Repayment for Construction	3,680.59	4,800.	50.
	*Included annual Sewer Bond payment.			

CITY OF GRAND JUNCTION, 1962 BUDGET

REVENUE DETAIL

Account	SOURCE OF REVENUE	Actual 1960	Estimate 1961	Budget 1962
600.	AIRPORT FUND	\$130,381.10	\$115,377.	\$ 60,327.
##	TOTAL REVENUE	130,381.10	115,377.	60,327.
##	Estimated Carryover	- 717.33	9,672.	700.
600.1	Spec Trans from Gen Fund (#100)	45,000.00	31,500.	2,000. (25,000. in work)
600.2	Mesa County	45,000.00	31,500.	2,000. (25,000. in work)
600.3	Monarch Aviation Lease	6,000.00	6,000.	6,000.
600.4	United Airline Fees	5,821.20	5,820.	6,276.
600.5	Frontier Airline Fees	6,285.50	4,950.	5,768.
600.6	Governmental Leases	3,900.43	11,785.	23,533.
600.6-1	Federal Aviation Agency	2,759.01	9,385.	19,859.
600.6-2	U. S. Weather Bureau	1,138.42	2,200.	3,671.
600.6-3	Civil Air Patrol	1.00	1.	1.
600.6-4	U. S. Navy	1.00	1.	1.
600.6-5	State Game & Fish Dept.	1.00	1.	1.
600.7	Gas Sales, Monarch Av.	3,900.80	3,500.	3,400.
600.8	Hertz Rent-A-Car Lease	3,447.90	3,000.	3,000.
600.9	Avis Car Rental Lease	2,968.56	2,500.	2,500.
600.10	Gr Vly Aircraft Lease	3,159.70	1,800.	1,800.
600.11	Aeroplane Restaurant Ls.	2,037.81	2,000.	2,000.
600.12	F.A.A. Electricity	-	200.	200.
600.13	Gas Sales, Gr Vly Aircrft	3,159.70	800.	800.
600.14	Associated Aviation Ins.	382.99	250.	250.
600.15	Misc Collections	34.04	100.	100.

CITY OF GRAND JUNCTION, 1962 BUDGET

REVENUE DETAIL

Account	SOURCE OF REVENUE	Actual 1960	Estimate 1961	Budget 1962
700	LIBRARY FUND	\$ 39,834.07	\$ 44,472.	\$ 45,854.
##	TOTAL REVENUE	39,834.07	44,472.	45,854.
##	Estimated Carryover	1,617.70	1,700.	1,800.
700.1	Genl Trans from Genl Fund (#100)	* 35,778.67	40,652.	42,034.
700.2	Book Fines & Fees	2,298.22	2,100.	2,000.
700.3	Pay Telephone	14.48	20.	20.
	Rent	125.00	-	-
800	CEMETERY FUND	\$ 25,469.14	\$ 28,616.	\$ 22,708.
##	TOTAL REVENUE	25,469.14	28,616.	22,708.
##	Estimated Carryover	1,487.99	6,186.	4,408.
800.1	Lot Sales, Orch Mesa Cem	5,328.36	5,607.	5,000.
800.2	Lot Sales Municipal Cem	2,265.00	3,157.	2,500.
800.3	Grave Openings	5,723.00	5,811.	4,000.
800.4	Int on Invested Funds	5,925.82	5,824.	5,500.
800.5	Grave Marker bases	1,497.97	2,031.	1,300.
800.6	Spec Trans from Gen Fund (#100)	3,241.00	-	-
* Tax Levy				

CITY OF GRAND JUNCTION, 1962 BUDGET

REVENUE DETAIL

Account	SOURCE OF REVENUE	Actual 1960	Estimate 1961	Budget 1962
900	LINCOLN PARK POOL	\$ 22,337.79	\$ 21,387.	\$ 20,970.
##	TOTAL REVENUE	22,337.79	21,387.	20,970.
##	Estimated Carryover	1,889.15	583.	1,144.
900.1	Admission Sales	20,384.89	20,634.	19,656.
900.2	Int on Invested Funds	63.75	170.	170.
1000	MOYER POOL FUND	\$ 10,681.06	\$ 9,099.	\$ 11,166.
##	TOTAL REVENUE	10,681.06	9,099.	11,166.
##	Estimated Carryover	1,111.57	287.	-0-
1000.1	Admission Sales	9,569.49	8,812.	10,066.
1000.2	Learn-to-Swim fees			1,100.

CITY OF GRAND JUNCTION, 1962 BUDGET

REVENUE DETAIL

Account	SOURCE OF REVENUE	Actual 1960	Estimate 1961	Budget 1962
1100	PARK IMPROVEMENT FUND	\$ 15,100.00	\$ 22,492.	\$ 31,255.
##	TOTAL REVENUE	15,100.00	22,492.	31,255.
##	Estimated Carryover	None	3,955.	15,255.
1100.1	Spec Trans from General Fund (#100)	-	6,000.	6,000.
1100.2	Other Taxing Bodies	15,100.00	9,000.	9,000.
1100.2-1	Mesa County	5,000.00	3,000.	3,000.
1100.2-2	School Dist #51	5,000.00	3,000.	3,000.
1100.2-3	Mesa College		3,000.	3,000.
1100.3	Other Contributions	5,100.00	3,537.	1,000.
1200	LAND FUND	\$ 14,250.00	\$ 22,109.	\$ 13,510.
##	TOTAL REVENUE	14,250.00	22,109.	13,510.
##	Estimated Carryover	None	12,109.	13,510.
1200.1	Land Sales	14,250.00	10,000.	-0-
1300	STORES FUND	-0-	-0-	-0-
	Less Trans from other Depts	-233,334.32	-318,516.	-12,000.
	Less Outside Sales & Misc	- 41,989.50	- 57,872.	-56,100.
##	TOTAL REVENUE	275,323.82	376,388.	68,100.
##	Estimated Carryover	37,398.22	54,273.	55,000.
1300.1	Sales to Other Depts	233,334.32	318,516.	12,000.
1300.2	Other Receipts	4,591.28	3,599.	1,100.

CITY OF GRAND JUNCTION, 1962 BUDGET

PART III

EXPENDITURE

ESTIMATES

CITY OF GRAND JUNCTION, 1962 BUDGET

EXPENDITURE SUMMARY

Account	Actual 1960	Estimate 1961	Budget 1962
TOTAL EXPENDITURES -- (All Departments)	\$2,069,684.96	\$1,957,729.*	(\$2,385,601.)A (\$2,360,601.)B
10 Legis & Counsel	23,994.98	24,105.	16,480.
20 Judiciary	5,428.93	5,216.	5,784.
30 Management	17,634.18	17,823.	19,270.
40 Records	16,717.16	22,501.	22,117.
50 Finance	46,348.08	48,861.	50,383.
60 Development	29,596.16	34,514.	31,380.
70 Public Works	525,536.04	681,013.	(643,641.)A (600,817.)B
80 Utilities	787,366.54	456,032.	773,253.
90 Police	213,433.07	214,973.	231,060.
100 Fire	146,373.23	148,198.	(223,344.)A (241,168.)B
110 Park & Recreation	184,821.35	218,556.	251,587.
130 Library	38,158.59	41,752.	45,854.
140 General Government	34,276.65	44,185.	71,448.

*The difference between this total and the total of estimated 1961 revenue is the estimated total carryover for 1962.

CITY OF GRAND JUNCTION, 1962 BUDGET

DEPARTMENT SUMMARY

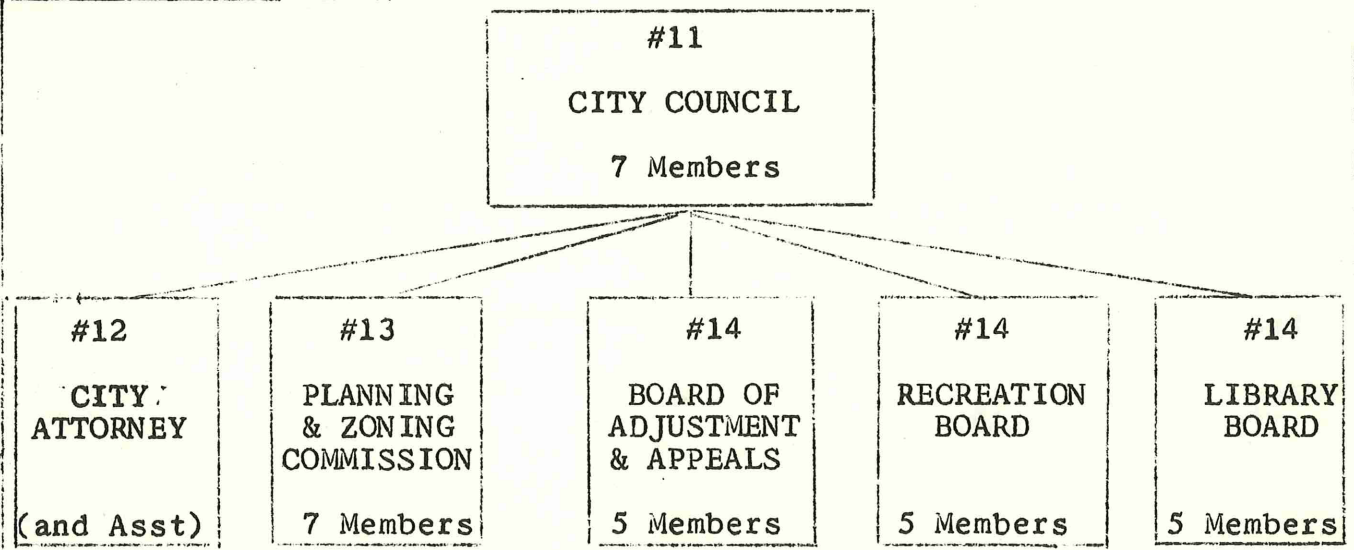
LEGISLATION AND COUNSEL DEPARTMENT

PURPOSE & JUSTIFICATION: The legislative, legal and policy-making affairs of the City are supported by this program. The City Council and its advisory boards and commissions guide all activities of the City according to the City Charter. Therefore these functions and the legal staff of the City Attorney's office must be considered a separate function.

The drop of \$8,339. proposed for 1962 over 1961 is due entirely to the changed arrangement between the City and County on Regional Planning. The City provides for City planning through its Development Department while the County plans to finance a County planning function. Both will be coordinated through the Regional Planning Commission although there will be no Regional staff as such.

<u>COMPARATIVE RECAP:</u>	Actual 1960	Budget 1961	Budget 1962
<u>Supporting Funds:</u>	\$ 23,994.98	\$24,819.	\$16,480.
General Fund.....	23,994.98	24,819.	16,480.
<u>Expenditures:</u>	\$ 23,994.98	\$24,819.	\$16,480.
Personal Services.....	12,456.50	12,714.	12,770.
Operating Expenses.....	11,538.48	12,105.	3,710.
Capital Outlay.....	none	none	none

DEPARTMENTAL ORGANIZATION:



CITY OF GRAND JUNCTION, 1962 BUDGET

DEPARTMENT DETAIL

Account	Expenditure	Actual 1960	Estimate 1961	Budget 1962
LEGISLATION & COUNSEL DEPARTMENT #10		\$ 23,994.98	\$ 24,105.	\$ 16,480.
CITY COUNCIL Division #11		7,137.46	5,075.	5,520.
Supported by General Fund.....\$5,520. (Revenue Acct No. 100, Pg 12)				
11.02	SALARIES & WAGES PART TIME	3,480.00	3,480.	3,480.
	Pres City Council 6 City Cnclmen			600. 2,880.
11.10	OFFICE SUPPLIES	139.05	195.	200.
11.10-1	Genl-Stores	131.05		s. 160.
11.10-2	Genl-Non-Stores			20.
11.10-3	Postage	8.00		20.
11.13	PRINTING	1,618.66	600.	700.
11.13-14	Advertising	1,618.66		
11.19	MISCELLANEOUS	1,899.75	800.	1,140.
11.19-2	Genl-Non-Stores	58.39		40.
11.19-10	Conf Exp Mun League Cnclmen Inst	1,841.36		600.
11.19-53	Business trips			500.

(continued)

CITY OF GRAND JUNCTION, 1962 BUDGET

DEPARTMENT DETAIL

Account	Expenditure	Actual 1960	Estimate 1961	Budget 1962
LEGISLATION & COUNSEL DEPARTMENT #10 (continued)				
CITY ATTORNEY Division #12		\$ 9,507.52	\$ 9,770.	\$ 10,135.
Supported by General Fund....\$10,135. (Revenue Acct No. 100, Pg 12)				
12.02	SALARIES & WAGES PART TIME	8,750.00	9,000.	9,000.
12.04	SOCIAL SECURITY	226.50	135.	244.
12.06	INSUR PARTIC			46.
12.06-105	Health Ins			46.
12.10	OFFICE SUPPLIES		100.	100.
12.10-2	Gen1-Non-Stores			100.
12.19	MISCELLANEOUS	531.02	435.	545.
12.19-2	Gen1-Non-Stores	167.10		170.
12.19-5	Dues & Pubctns	175.00		175.
12.19-10	Conf Exp	43.62		50.
12.19-18	Transportation	145.30		150.
12.30	SPECIAL PROJECTS		100.	200.
12.30-90	Spec Counsel		100.	200.

(continued)

CITY OF GRAND JUNCTION, 1962 BUDGET

DEPARTMENT DETAIL

Account	Expenditure	Actual 1960	Estimate 1961	Budget 1962
LEGISLATION & COUNSEL DEPARTMENT #10 (continued)				
PLANNING & ZONING COMMISSION Division #13		\$ 7,350.00	\$ 9,260.	\$ 825.
Supported by General Fund.....\$825. (Revenue Acct No. 100, Pg 12)				
13.13	PRINTING		160.	190.
13.13-14	Adv			190.
13.19	MISCELLANEOUS		9,100.	635.
13.19-2	Genl-Non-Stores			10.
13.19-10	Conf Exp (Plan Inst, Boulder)			125.
13.19-91	Regional Plan.	7,350.00		500.

(continued)

CITY OF GRAND JUNCTION, 1962 BUDGET

DEPARTMENT DETAIL

Account	Expenditure	Actual 1960	Estimate 1961	Budget 1962
LEGISLATION & COUNSEL DEPARTMENT #10	(continued)			
OTHER BOARDS Division #14		None	None	None
14.00	BOARD OF ADJ & APPEALS			
14.00	RECREATION BOARD			
14.00	LIBRARY BOARD			

CITY OF GRAND JUNCTION, 1962 BUDGET

DEPARTMENT SUMMARY

JUDICIARY DEPARTMENT

PURPOSE & JUSTIFICATION: The Municipal Court is supported by this program. The duty of the court is to hear and decide cases involving violations of City ordinances. Recent rulings by the Colorado Supreme Court require that such ordinance violations which are also violations of State Statutes must be heard in the State Courts.

The apparent drop of \$474. from this program is due entirely to a shifting of operating expense accounts to Division #53 which accounts in part for an increase in that Division. A total of \$350. for a "Driver School" has been added at the request of the Municipal Judge to help teach traffic violators correct driving habits. Almost all of this money would go for off-duty police officer teachers of this classroom school.

<u>COMPARATIVE RECAP:</u>	Actual 1960	Budget 1961	Budget 1962
<u>Supporting Funds:</u>	\$ 5,428.93	\$ 6,258.	\$ 5,784.
General Fund.....	5,428.93	6,258.	5,784.
<u>Expenditures:</u>	\$ 5,428.93	\$ 6,258.	\$ 5,784.
Personal Services.....	4,913.84	4,948.	4,954.
Operating Expenses.....	515.09	1,310.	830.
Capital Outlay.....	none	none	none

DEPARTMENTAL ORGANIZATION:

#21
MUNICIPAL COURT
Municipal Judge and his
Assistant serve part-time
(Court Clerks and office
expense are carried in
Sub-program #53)

CITY OF GRAND JUNCTION, 1962 BUDGET

DEPARTMENT DETAIL

Account	Expenditure	Actual 1960	Estimate 1961	Budget 1962
JUDICIARY DEPARTMENT #20		\$ 5,428.93	\$ 5,216.	\$ 5,784.
MUNICIPAL COURT Division #21		5,428.93	5,216.	5,784.
Supported by General Fund.....\$5,784. (Revenue Acct No. 100, Pg 12)				
21.02	SALARIES & WAGES PART TIME	4,759.65	4,800.	4,800.
	Municipal Judge & Assistant			
21.04	SOCIAL SECURITY	151.47	72.	150.
21.05	WORKMEN'S COMP	2.72	4.	4.
21.19	MISCELLANEOUS	515.09	340.	830.
21.19-2	Genl-Non-Stores	369.09	40.	210.
21.19-10	Conf Exp (Jdg Conf)			270.
21.19-92	Jury Expense	146.00	300.	
21.19-108	Driver School			350.

CITY OF GRAND JUNCTION, 1962 BUDGET

DEPARTMENT SUMMARY

MANAGEMENT DEPARTMENT

PURPOSE & JUSTIFICATION: The City Charter specifies the duties of the City Manager in Article VII, Section 59, page 19, as follows:

"The city manager shall see to the faithful execution of the laws and ordinances of the state and city; control and direct the several officers and departments of the city government; investigate at any time the affairs of any department; attend all meetings of the council and take part in its discussions but not vote; keep the council advised of all the needs of the municipality; recommend measures for its adoption; prepare the annual budget, and perform such other duties as may be imposed on him by this Charter or any ordinance."

Mgmt
30

The increase of \$1,469. for 1962 over the 1961 budget is caused by regular salary increments for the Manager and his secretary, a more realistic telephone budget, the need for a new typewriter and a change in the Manager's business transportation. During 1960 and 1961 the manager received \$35. per month as a car allowance for his private automobile. With the advent of radio communications in administrative vehicles, the Manager will be provided a City vehicle which will be put into police service the following year. This procedure was followed from the early 1940's to 1957 in Grand Junction and is commonly used in most Colorado Council-Manager cities.

<u>COMPARATIVE RECAP:</u>	Actual 1960	Budget 1961	Budget 1962
<u>Supporting Funds:</u>	\$ 17,634.18	\$17,831.	\$19,270.
General Fund.....	17,634.18	17,831.	19,270.
<u>Expenditures:</u>	\$ 17,634.18	\$17,831.	\$19,270.
Personal Services.....	13,743.19	15,238.	15,959.
Operating Expenses.....	3,890.99	2,593.	3,311.
Capital Outlay.....	none	none	none

DEPARTMENTAL ORGANIZATION:

#31 MANAGER'S OFFICE 2 employees
--

CITY OF GRAND JUNCTION, 1962 BUDGET

DEPARTMENT DETAIL

Account	Expenditure	Actual 1960	Estimate 1961	Budget 1962
MANAGEMENT DEPARTMENT #30		\$ 17,634.18	\$ 17,823.	\$ 19,270.
MANAGER'S OFFICE Division #31		17,634.18	17,823.	19,270.
Supported by General Fund.....\$19,270. (Revenue Acct No. 100, Pg 12)				
31.01	SALARIES & WAGES FULL TIME	13,462.92	14,964.	15,492.
	1 City Mgr R NA			11,460.
	1 Sec'y #1 4			4,032.
31.03	SALARY & WAGES OVERTIME			50.
31.04	SOCIAL SECURITY	272.27	204.	275.
31.05	WORKMEN'S COMP	8.00	5.	10.
31.06	INSUR PARTIC			132.
31.06-105	Health Ins			84.
31.06-106	Life Ins			48.
31.10	OFFICE SUPPLIES	2,386.02	400.	430.
31.10-1	Genl-Stores	2,024.34		270.
31.10-2	Genl-Non-Stores	361.68		40.
31.10-3	Postage			120.
31.11	OFFICE EQUIPMENT		20.	200.
	Elec Typewriter, net			200.
31.12	OFFICE EQUIP MAINT	63.91	30.	50.
31.12-16	Maint Contracts	37.30		
31.12-19	Maint Services	26.61		
31.13	PRINTING		70.	80.
31.13-12	Forms			

(continued)

CITY OF GRAND JUNCTION, 1962 BUDGET

DEPARTMENT DETAIL

Account	Expenditure	Actual 1960	Estimate 1961	Budget 1962
MANAGEMENT DEPARTMENT #30 (continued)				
MANAGER'S OFFICE Division #31 (continued)				
31.14	EQUIP-MOBILE			800.
31.14-4	Equip Rental			800.
	To purchase: One sedan....\$2,100.			
31.17	UTILITIES	338.80	830.	790.
31.17-6	Telephone	338.80		
31.19	MISCELLANEOUS	1,102.26	1,300.	961.
31.19-2	Genl-Non-Stores	321.81	15.	20.
31.19-5	Dues & Pubct'ns		105.	105.
	ICMA (\$30)	35.00		
	MIS (\$75)	150.00		
	Other	195.55		
31.19-10	Conference Exp		600.	561.
	Mun Lg (\$56)			
	ICMA (\$420)			
	Mgr Inst (\$85)			
31.19-18	Transportation	367.50	420.	-0-
31.19-20	Official Bond	32.40	35.	35.
31.19-53	Business trips		125.	240.

CITY OF GRAND JUNCTION, 1962 BUDGET

DEPARTMENT SUMMARY

RECORDS DEPARTMENT

PURPOSE & JUSTIFICATION: It is the function of this department to keep all City records as specified by the City Charter. Under the reorganization which went into effect in 1961, the City Clerk assists the City Manager in research activities and miscellaneous administration. She also serves as Personnel Director on a full-time basis and as Acting City Manager during the Manager's absence.

The budget for the coming year is virtually the same as that for last year. The decrease possible by the completed construction of the "Service Center" booth in 1961 is almost offset by normal salary increments, office supplies and some miscellaneous items.

Recds
40

<u>COMPARATIVE RECAP:</u>	Actual 1960	Budget 1961	Budget 1962
<u>Supporting Funds:</u>	\$ 16,717.16	\$22,574.	\$22,117.
General Fund.....	16,717.16	22,574.	22,117.
 <u>Expenditures:</u>	 \$ 16,717.16	 \$22,574.	 \$22,117.
Personal Services.....	14,725.15	18,980.	18,960.
Operating Expenses.....	1,992.01	2,894.	3,157.
Capital Outlay.....	none	700.	none

DEPARTMENTAL ORGANIZATION:

#41 ADMINISTRATION and PERSONNEL 4 employees
--

CITY OF GRAND JUNCTION, 1962 BUDGET

DEPARTMENT DETAIL

Account	Expenditure	Actual 1960	Estimate 1961	Budget 1962
RECORDS DEPARTMENT #40		\$ 16,717.16	\$ 22,501.	\$ 22,117.
ADMINISTRATION & PERSONNEL Division #41		16,717.16	22,501.	22,117.
Supported by General Fund.....\$22,117. (Revenue Acct No. 100, Pg 12)				
41.01	SALARIES & WAGES FULL TIME	14,301.00	18,049.	18,074.
	1 City Clerk ^R ₁₃			6,384.
	1 Deputy Clerk 3			4,284.
	1 Mchn Oper 3			3,972.
	1 Commtns Oper 3			3,434.
41.03	SALARIES & WAGES OVERTIME			100.
41.04	SOCIAL SECURITY	410.73	498.	515.
41.05	WORKMEN'S COMP	13.42	8.	13.
41.06	INSUR PARTIC			258.
41.06-105	Health Ins			180.
41.06-106	Life Ins.			78.
41.10	OFFICE SUPPLIES	1,278.69	700.	800.
41.10-1	Genl-Stores	938.09		s. 500.
41.10-2	Genl-Non-Stores			200.
41.10-3	Postage	340.60		100.
41.11	OFFICE EQUIP	181.02	582.	365.
41.11-A	Elec Typewrtr, net			250.
41.11-B	Tape Recorder access.			115.
41.12	OFFICE EQUIP MAINT	382.90	100.	300.
41.12-16	Maint Contract	295.90		200.
41.12-19	Maint Service	87.00		100.

(continued)

CITY OF GRAND JUNCTION, 1962 BUDGET

DEPARTMENT DETAIL

Account	Expenditure	Actual 1960	Estimate 1961	Budget 1962
RECORDS DEPARTMENT #40 (continued)				
ADMINISTRATION & PERSONNEL Division #41 (continued)				
41.13	PRINTING	139.40	704.	750.
41.13-12	Forms	121.05		
41.13-14	Adv	18.35		
41.17	UTILITIES		375.	375.
41.17-6	Telephone		375.	375.
41.19	MISCELLANEOUS	10.00	410.	567.
41.19-2	Genl-Non-Stores			150.
41.19-5	Dues & Pubct'ns Intl City Clk Assn "Office Girls"	10.00		182.
41.19-10	Conference Exp			100.
41.19-64	Employment Serv.			135.
41.30	SPECIAL PROJECTS		1,075.	

CITY OF GRAND JUNCTION, 1962 BUDGET

DEPARTMENT SUMMARY

FINANCE DEPARTMENT

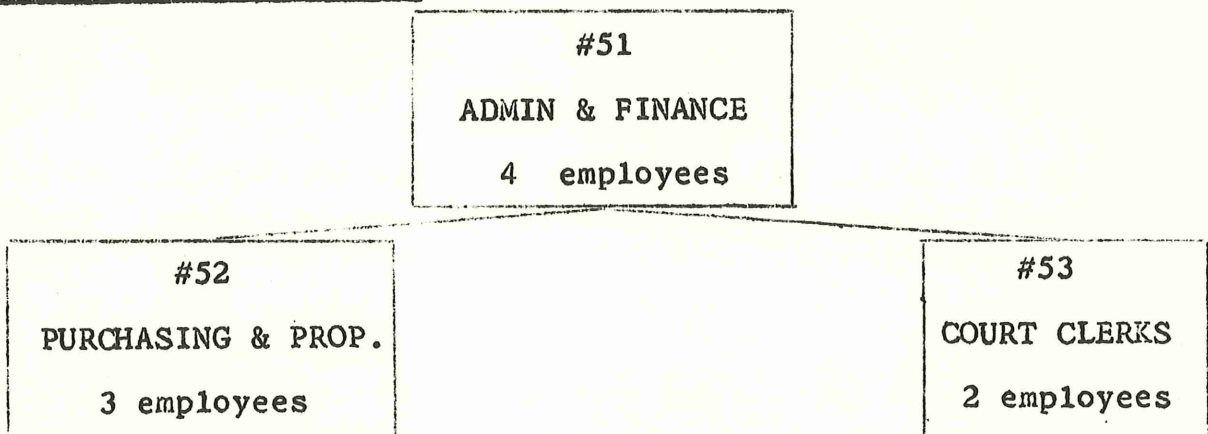
PURPOSE & JUSTIFICATION: The financial control and reporting of all City funds are the responsibility of the department. The investment of idle City funds is included in this function. Accounting procedures and reporting were altered in 1961 to bring all financial matters under the control of this department in compliance with recommendations of various City audits.

The budget increase in Division #51 is due to a part-time cashier to relieve the periodic overload in the Finance Director's office. This should assure the timeliness of regular financial reports for the Council and department heads. The decrease in Division #52 is due to the dropping back in longevity step for the Purchasing Agent position with pending personnel changes because of retirement. The increase in Division #53 is explained on page 26. Division #54, "Stores Inventory", has been added to ease accounting procedures by following the same system used in the Equipment Fund.

Fin
50

<u>COMPARATIVE RECAP:</u>	Actual 1960	Budget 1961	Budget 1962
<u>Supporting Funds.</u>	\$ 46,348.08	\$48,341.	\$50,383.
General Fund.....	46,348.08	48,341.	50,383.
<u>Expenditures:</u>	\$ 46,348.08	\$48,341.	\$50,383.
Personal Services.....	41,536.89	42,271.	42,729.
Operating Expenses.....	4,811.19	5,270.	7,584.
Capital Outlay.....	none	800.	70.

DEPARTMENTAL ORGANIZATION:



CITY OF GRAND JUNCTION, 1962 BUDGET

DEPARTMENT DETAIL

Account	Expenditure	Actual 1960	Estimate 1961	Budget 1962
FINANCE DEPARTMENT #50 (continued)				
ADMINISTRATION & FINANCE Division #51 (continued)				
51.12	OFFICE EQUIP MAINT	\$ 104.30	\$ 294.	\$ 393.
51.12-16	Maint Contracts			
	Natl Cash Reg	48.50	49.	49.
	2 Typewriters		37.	75.
	Diebold Safe	35.00	35.	35.
	Burroughs Ad Mchn			21.
	1/2 Burr Acct Mchn	20.80	113.	113.
51.12-19	Maint Services		60.	100.
51.13	PRINTING	386.52	1,510.	1,300.
51.13-12	Forms	386.52	865.	600.
51.13-14	Adv		645.	700.
51.17	UTILITIES		260.	250.
51.17-6	Telephone		260.	250.
51.19	MISCELLANEOUS	463.07	537.	870.
51.19-2	Genl-Non-Stores		100.	150.
51.19-5	Dues & Pubct'ns			
	MFOA	30.00	30.	30.
	Govt Fin Off Assn.	5.00	5.	5.
51.19-10	Conf Expense			
	Mun League		79.	50.
	Fin Off Inst		73.	--
	MFOA			385.
51.19-20	Official Bond & Ins.	428.07	250.	250.
51.30	SPECIAL PROJECTS		416.	70.
51.30-A	Acct Mchn Enclosure		56.	70.
51.30-B	Forms Analysis Study		360.	

(continued)

CITY OF GRAND JUNCTION, 1962 BUDGET

DEPARTMENT DETAIL

Account	Expenditure	Actual 1960	Estimate 1961	Budget 1962
FINANCE DEPARTMENT #50 (continued)				
PURCHASING & PROPERTY Division #52		\$ 17,095.29	\$ 16,107.	\$ 15,213.
Supported by General Fund.....\$15,213. (Revenue Acct No. 100, Pg 12)				
52.01	SALARIES & WAGES FULL TIME	14,214.83	14,160.	12,684.
	1 Pur Agt R 10			4,656.
	1 Pur Clk 5			3,636.
	1 Rec Clk 5			4,392.
52.04	SOCIAL SECURITY	410.22	405.	397.
52.05	WORKMEN'S COMP	72.04	79.	89.
52.06	INSUR PARTIC			180.
52.06-105	Health Ins.			120.
52.06-106	Life Ins.			60.
52.10	OFFICE SUPPLIES	922.30	100.	250.
52.10-1	Genl-Stores	922.30		s. 50.
52.10-2	Genl-Non-Stores			100.
52.10-3	Postage			100.
52.11	OFFICE EQUIP		25.	85.
52.12	OFFICE EQUIP MAINT	36.00	43.	111.
52.12-16	Maint Contracts	36.00	43.	36.
52.12-19	Maint Services			75.
52.13	PRINTING		350.	350.
52.13-12	Forms			
52.13-14	Adv			350
52.14	EQUIP-MOBILE	591.00	630.	630.
52.14-4	Equip Rent	591.00	630.	e. 630.
52.17	UTILITIES	773.90	190.	227.
52.17-6	Telephone			227.
52.19	MISCELLANEOUS	75.00	125.	210.
52.19-2	Genl-Non-Stores		50.	75.
52.19-5	Dues & Pubct'ns	75.00	75.	75.
52.19-10	Training Course			60.

(continued)

CITY OF GRAND JUNCTION, 1962 BUDGET

DEPARTMENT DETAIL

Account	Expenditure	Actual 1960	Estimate 1961	Budget 1962
FINANCE DEPARTMENT #50 (continued)				
COURT CLERKS Division #53		\$ 9,762.83	\$ 9,926.	\$ 10,419.
Supported by General Fund.....\$10,419. (Revenue Acct No. 100, Pg 12)				
53.01	SALARIES & WAGES FULL TIME	8,472.00	8,628.	8,736.
	1 Court Clk			4,596
	1 Asst Court Clk			4,140.
53.03	SALARIES & WAGES OVERTIME			100.
53.04	SOCIAL SECURITY	254.16	259.	273.
53.05	WORKMEN'S COMP	6.28	4.	6.
53.06	INSUR PARTIC			84.
53.06-105	Health Ins.			48.
53.06-106	Life Ins.			36.
53.10	OFFICE SUPPLIES	515.30	260.	330.
53.10-1	Genl-Stores	355.30	100.	s. 120.
53.10-2	Genl-Non-Stores			30.
53.10-3	Postage	160.00	160.	180.
53.12	OFFICE EQUIP MAINT (Inc in Misc)		80.	80.
53.12-19	2 Typewriters Cash Register Money Counter & Sorter			80.
53.13	PRINTING (Inc in Misc)		225.	225.
53.13-12	Forms			70.
	5 M Traffic Cards			85.
	15 M Whiz Tickets			70.
53.17	UTILITIES		135.	135.
53.17-6	Telephone			135.
53.19	MISCELLANEOUS	515.09	335.	450.
53.19-2	Genl-Non-Stores	369.09		50.
53.19-92	Jury Expense	146.00		400.

(continued)

CITY OF GRAND JUNCTION, 1962 BUDGET

DEPARTMENT DETAIL

Account	Expenditure	Actual 1960	Estimate 1961	Budget 1962
FINANCE DEPARTMENT #50 (continued)				
STORES INVENTORY Division #54		-0-	-0-	-0-
Less total of "Office Supplies, Stores" and "Materials and Supplies, Stores" in other accounts		-289,638.19	-59,000.	-69,171.
Supported by Stores Fund.....\$69,171. (Revenue Acct No. 1300, Pg 19)				
##	Sub-Total	<u>289,638.19</u>	<u>59,000.</u>	<u>69,171.</u>
54.16	MATERIALS & SUPPLY INVENTORY	289,638.19	9,700.	54,171.
54.16-93	Office Supplies			20,100.
54.16-23	Materials & Supplies			34,071.
54.19	MISCELLANEOUS		49,300.	15,000.
54.19-11	Oper Capital		49,300.	15,000.

CITY OF GRAND JUNCTION, 1962 BUDGET

DEPARTMENT SUMMARY

DEVELOPMENT DEPARTMENT

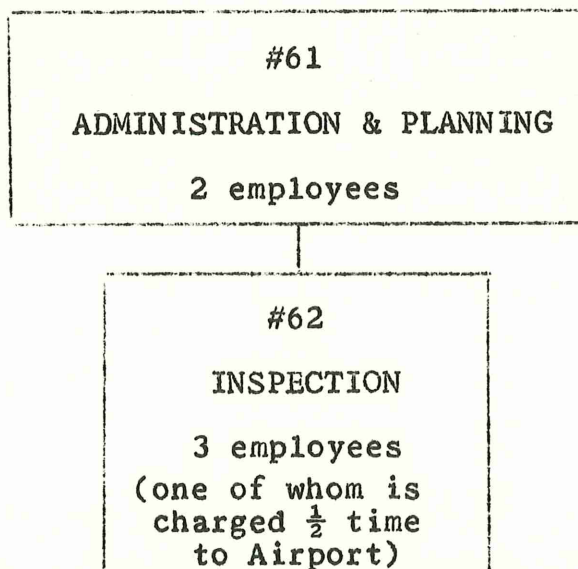
PURPOSE & JUSTIFICATION: Coordination of City development is the responsibility of this department. To accomplish this, City planning and administration of all ordinances which control building on private property are assigned here. Annexation evaluation and assistance to other City departments in developing public facilities are also duties of this department.

There is a \$3,405. drop for 1962 compared to 1961's budget. Division #61 is increased slightly because of a need for part-time drafting aid. Division #62 drops substantially because of the elimination of the "General Inspector" position and the assignment of the electrical inspector half-time to the Airport for Tower maintenance.

<u>COMPARATIVE RECAP:</u>	Actual 1960	Budget 1961	Budget 1962
<u>Supporting Funds</u>	\$ 29,596.16	\$34,785.	\$31,380.
General Fund.....	29,596.16	34,785.	31,380.
<u>Expenditures:</u>	\$ 29,596.16	\$34,785.	\$31,380.
Personal Services.....	26,709.61	29,658.	26,250.
Operating Expenses.....	2,886.55	4,507.	4,600.
Capital Outlay.....	none	620.	530.

Dev
60

DEPARTMENTAL ORGANIZATION:



CITY OF GRAND JUNCTION, 1962 BUDGET

DEPARTMENT DETAIL

Account	Expenditure	Actual 1960	Estimate 1961	Budget 1962
DEVELOPMENT DEPARTMENT #60		\$ 29,596.16	\$ 34,514.	\$ 31,380.
ADMINISTRATION & PLANNING Division #61		6,124.	14,336.	15,291.
Supported by General Fund.....\$15,291. (Revenue Acct No. 100, Pg 12)				
61.01	SALARIES & WAGES FULL TIME	6,000.00	11,912.	10,356.
	1 Dev. Director	6,000.00		6,384.
	1 Sec'y			3,972.
61.02	SALARIES & WAGES PART TIME			1,650.
61.03	SALARIES & WAGES OVERTIME			50.
61.04	SOCIAL SECURITY	120.00	320.	320.
61.05	WORKMEN'S COMP	4.00	10.	10.
61.06	INSUR PARTIC			120.
61.06-105	Health Ins			72.
61.06-106	Life Ins			48.
61.10	OFFICE SUPPLIES		750.	1,000.
61.10-1	Genl-Stores			s. 200.
61.10-2	Genl-Non-Stores			400.
61.10-3	Postage			50.
61.10-62	Maps & Code Bks			350.
61.11	OFFICE EQUIP			200.
61.11-1	Elec Typewriter			200.
61.16	MATERIAL & SUPPLIES		12.	-0-
61.17	UTILITIES		280.	280.
61.17-6	Telephone			

(continued)

CITY OF GRAND JUNCTION, 1962 BUDGET

DEPARTMENT DETAIL

Account	Expenditure	Actual 1960	Estimate 1961	Budget 1962
DEVELOPMENT DEPARTMENT #60 (continued)				
ADMINISTRATION & PLANNING Division #61 (continued)				
61.19	MISCELLANEOUS		900.	775.
61.19-2	Genl-Non-Stores			50.
61.19-5	Dues & Pubct'ns			55.
	Urban Land Inst (\$25)			
	Downtown Ideas (\$20)			
	Zoning Digest (\$10)			
61.19-10	Conference Exp. Planning Inst - Boulder			100.
61.19-18	Transportation			420.
61.19-61	Filing Fees			150.
61.30	SPECIAL PROJECTS		152.	530.
61.30-A	Door & Bookcase			30.
61.30-B	Special Plans			500.

(continued)

CITY OF GRAND JUNCTION, 1962 BUDGET

DEPARTMENT DETAIL

Account	Expenditure	Actual 1960	Estimate 1961	Budget 1962
DEVELOPMENT DEPARTMENT #60 (continued)				
INSPECTION Division #62		\$ 23,472.16	\$ 20,178.	\$ 16,089.
Supported by General Fund.....\$16,089. (Revenue Acct No. 100, Pg 12)				
62.01	SALARIES & WAGES FULL TIME	19,908.00	17,003.	13,032.
	Bldg Insp R	5,172.00	6,000.	6,000.
	Elec Insp ($\frac{1}{2}$ Salary, 9 other $\frac{1}{2}$ in #76 Airpt)	5,172.00	5,172.	2,640.
	Plbg Insp II	5,172.00	4,184.	4,392.
	General Insp 7	4,392.00	1,647.	
62.03	SALARIES & WAGES OVERTIME			100.
62.04	SOCIAL SECURITY	587.76	300.	370.
62.05	WORKMEN'S COMP	89.85	60.	80.
62.06	INSUR PARTIC			162.
62.06-105	Health Ins			108.
62.06-106	Life Ins			54.
62.10	OFFICE SUPPLIES	500.00	50.	300.
62.10-1	Genl-Stores	500.00		s. 150.
62.10-2	Genl-Non-Stores			150.
62.13	PRINTING	286.55	200.	300.
62.13-12	Forms	86.55		100.
62.13-94	Blue Prtg (outside)	200.00		200.
62.14	EQUIP-MOBILE	1,600.00	1,800.	1,200.
62.14-4	Equip Rent	1,600.00		e.1,200.
62.19	MISCELLANEOUS	500.00	750.	545.
62.19-2	Genl-Non-Stores			
62.19-5	Dues & Pubct'ns		110.	110.
62.19-10	Training School	200.00		135.
62.19-60	Abstract Serv.	300.00		300.
62.30	SPECIAL PROJECTS		15.	

CITY OF GRAND JUNCTION, 1962 BUDGET

DEPARTMENT SUMMARY

PUBLIC WORKS DEPARTMENT

PURPOSE & JUSTIFICATION: All improvements and maintenance in City rights-of-way and other City-owned property is coordinated through this department with the exception of parks. Construction and maintenance of such facilities, whether by City forces or Special Improvement Districts, come under this heading. The engineering functions in the program are designed to be used as necessary by other departments having need of these services from time to time.

If "Operation Foresight" is undertaken the budget total will be only \$352. ("A" figure) more than in 1961. If it is not activated by district formation, the budget figure for 1962 will be \$42,472. ("B" figure) less than 1961. The difference lies in the money budgeted in 1961 for Airport Tower construction which is included in the department. The Sanitation Division (#75) shows a drop of \$10,678. because of the lower sanitation rates now in effect. The Equipment Shops (#74) reflect an increase of \$52,063. because of more realistic budgeting of carryover and increased vehicle use, generating more equipment rental revenues from the using departments. The one definitely added position, "Office Engineer", is the reassignment of the draftsman assigned to Development in 1961 to Public Works.

<u>COMPARATIVE RECAP:</u>	Actual 1960	Budget 1961	Budget 1962
<u>Supporting Funds:</u>	\$645,959.26	\$844,926.	\$845,278(A) 802,454(B)
General Fund.....	318,301.53	345,592.	\$438,620(A) 395,796(B)
Equipment Fund.....	* 120,423.22	* 149,574.	* 201,637.
Sanitation Fund.....	141,146.97	155,372.	144,694.
Airport Fund.....	66,087.54	194,388.	60,327.
*Equipment Fund costs are shown in this Recap, but do not appear in Program Detail since money comes from other programs.			
Total 1962 Equipment = \$201,637.			

<u>Expenditures:</u>	* \$645,959.26	* \$844,926.	* \$845,278(A) 802,454(B)
Personal Services.....	\$240,276.90	277,404.	\$301,189(A) 295,189(B)
Operating Expenses.....	\$292,215.21	374,437.	\$445,049(A) 450,749(B)
Capital Outlay.....	\$113,467.15	193,085.	\$ 99,040(A) 56,516(B)

DEPARTMENTAL ORGANIZATION:

#71
DIR. & ENGINEERING
8 employees

#72 STREETS & DRAINAGE 19 Employees	#73 TRAFFIC & MAINTENANCE 4 Employees	#74 EQUIPMENT SHOPS 5 Employees	#75 SANITATION 20 Employees	#76 AIRPORT 2 Employees (plus 1/2 time of Elec Insp)
--	--	--	-----------------------------------	--

Pub
Wks
70

CITY OF GRAND JUNCTION, 1962 BUDGET

DEPARTMENT DETAIL

Account	Expenditure	Actual 1960	Estimate 1961	Budget 1962
PUBLIC WORKS DEPARTMENT #70		\$525,536.04	\$681,013.	(\$643,641)A (\$600,817)B
DIRECTION & ENGINEERING Division #71		36,590.60	43,109.	(57,937)A (51,937)B
Supported by General Fund...(\$57,937)A (\$51,937)B (Revenue Acct No. 100, Pg 12)				
71.01	SALARY & WAGES FULL TIME	28,560.48	30,571.	(42,387)A (36,387)B
	R			
	1 Pub Wk Director 16			7,896.
	1 City Engineer 15			6,888.
	1 Proj Engineer 13			(6,000)A
	2 Field Engr 8			9,288.
	1 Office Engr 8			4,752.
	1 Jr Drftman 7			4,167.
	1 Sec'y 3			3,396.
71.02	SALARY & WAGES PART TIME		625.	1,728.
71.03	SALARY & WAGES OVERTIME		400.	800.
71.04	SOCIAL SECURITY	790.80	808.	1,215.
71.05	WORKMEN'S COMP	102.76	200.	392.
71.06	INSUR PARTIC			376.
71.06-105	Health Ins			226.
71.06-106	Life Ins			150.
71.10	OFFICE SUPPLIES	94.05	739.	1,000.
71.10-1	Genl-Stores			s. 350.
71.10-2	Genl-Non-Stores			400.
71.10-3	Postage	94.05		100.
71.10-4	Photo Supplies			150.
71.11	OFFICE EQUIP	749.59	1,100.	749.
	Filing Cabinet			250.
	Adding Mach			309.
	Drafting Mach			190.
71.12	OFFICE EQUIP MAINT	83.00	200.	335.
71.12-13	Survey Equip Repair & Rep parts			200.
71.12-16	Maint Contr	83.00		85.
71.12-17	Maint Not Contr			50.

(continued)

CITY OF GRAND JUNCTION, 1962 BUDGET

DEPARTMENT DETAIL

Account	Expenditure	Actual 1960	Estimate 1961	Budget 1962
PUBLIC WORKS DEPARTMENT #70 (continued)				
DIRECTION & ENGINEERING Division #71 (continued)				
71.13	PRINTING	\$ 441.87	\$ 350.	\$ 550.
71.13-12	Forms	381.39		300.
71.13-14	Adv	60.48		50.
71.13-94	Blue Prtg			200.
71.14	EQUIP-MOBILE	3,429.12	2,900.	3,300.
71.14-4	Equip Rental To Purchase: One Sedan w/trade (\$1800) 2 Pickup w/trade (\$4000)	3,429.12	2,900.	e.3,300.
71.15	EQUIP-NON-MOBILE		50.	340.
71.15-26	Small Items			100.
71.15-26A	Testing Equip			240.
71.16	MATERIAL & SUPPLIES	2,113.44	1,200.	1,200.
71.16-1	Genl-Stores	2,113.44	600.	s. 600.
71.16-2	Genl-Non-Stores		600.	600.
71.17	UTILITIES		470.	470.
71.17-6	Telephone		470.	470.
71.19	MISCELLANEOUS	225.49	295.	295.
71.19-2	Genl-Non-Stores			50.
71.19-5	Dues & Pubct'ns	92.50		25.
71.19-10	Conf Expense (Pub Wk Inst, Boulder)	132.99		70.
71.19-53	Transportation			150.
71.30	SPECIAL PROJECTS		3,201.	2,800.
71.30-A	Partitions in Drafting Rm.		451.	
71.30-B	Weed Control Program		2,750.	2,800.

(continued)

CITY OF GRAND JUNCTION, 1962 BUDGET

DEPARTMENT DETAIL

Account	Expenditure	Actual 1960	Estimate 1961	Budget 1962
PUBLIC WORKS DEPARTMENT #70 (continued)				
STREETS & DRAINAGE				(\$294,613)A
Division #72		\$235,018.06	\$256,235.	(\$290,589)B
Supported by General Fund..(\$294,613)A				
(\$290,589)B				
(Revenue Acct No. 100, Pg 12)				
72.01	SALARY & WAGES FULL TIME	71,918.89	80,664.	81,204.
	<u>R</u>			
	1 Pub Wk Supervsr 12			5,328.
	12 Crewmen #1 5			52,464.
	3 Crewmen #2 4			11,988.
	3 Crewmen #3 3			11,424.
72.02	SALARY & WAGES PART TIME		3,800.	4,000.
72.03	SALARY & WAGES OVERTIME		5,500.	5,500.
72.04	SOCIAL SECURITY	2,126.80	2,749.	3,100.
72.05	WORKMEN'S COMP	944.00	1,759.	1,985.
72.06	INSUR PARTIC			784.
72.06-105	Health Ins			480.
72.06-106	Life Ins			304.
72.14	EQUIP-MOBILE	40,951.23	50,000.	48,000.
72.14-4	Equip Rental To Purchase: One Flusher Truck w/trade...\$ 3,200. Four Dump Trucks w/trade.....22,000.		50,000.	e.48,000.
72.15	EQUIP-NON-MOBILE		500.	1,800.
72.15-26	Small Items Boiler for Asphalt Tanks			600. 1,200.
72.16	MATERIAL & SUPPLIES	25,849.94	50,760.	(44,500)A (50,200)B
72.16-1	Genl-Stores	25,849.94	1,000.	s.1,000.
72.16-2	Genl-Non-Stores		1,000.	1,000.
72.16-33	Gravel		24,360.	20,000.
72.16-34	Asphalt		15,000.	15,000.
72.16-35	Concrete		9,000.	(7,000)A
72.16-36	Salt		400.	(12,700)B 500.

(continued)

CITY OF GRAND JUNCTION, 1962 BUDGET

DEPARTMENT DETAIL

Account	Expenditure	Actual 1960	Estimate 1961	Budget 1962
PUBLIC WORKS DEPARTMENT #70 (continued)				
STREETS & DRAINAGE Division #72 (continued)				
72.17	UTILITIES	\$ 46,550.83	\$ 51,300.	\$ 53,300.
72.17-7	Heating (Asphalt tanks)	425.94	1,300	1,300.
72.17-8	Street Lighting	46,124.89	50,000.	52,000.
72.19	MISCELLANEOUS	2,571.40	1,200.	1,200.
72.19-1	Genl-Non-Stores	2,571.40	1,200.	1,200.
72.30	SPECIAL PROJECTS		2,500.	(26,824)A (23,800)B
72.30-A	Indian Wash			1,000.
72.30-B	12th St. Widening (Teller to Belford)			(8,000)B
72.30-C	Rebuild 10 blks of alley paving			(2,800)B
72.30-D	S. 7th St. from 4th Ave to Struthers Ave.			(12,000)B
72.30-E	Part of Shopping Park planters contr			(25,824)A (17,200)A (10,500)B
72.31	CAPITAL IMPROVEMENTS			(17,200)A (10,500)B
72.31-A	Bridge at 28 Rd & Kennedy Ave.			12,000.*
72.31-B	Storm Sewer Street Surface			(17,200)A
72.31-C	Storm Sewer W. Colorado			(10,500)B
72.32	DEBT RETIREMENT	44,104.97	5,503.	5,216.
72.32-25	Debt Serv Intersection Bonds	5,503.10	5,503.	5,216.
	12th & North Paving	38,601.87		
*\$12,000. in bridge work to be done by County <u>not</u> included in totals, and charged against "1962 Credit" of \$37,000. in County Road & Bridge fund (See Div #76 for balance).				
(continued)				

CITY OF GRAND JUNCTION, 1962 BUDGET

DEPARTMENT DETAIL

Account	Expenditure	Actual 1960	Estimate 1961	Budget 1962
PUBLIC WORKS DEPARTMENT #70 (continued)				
TRAFFIC OPERATIONS & BUILDING MAINTENANCE Division #73		\$ 46,692.87	\$ 60,598.	(86,070)A (53,270)B
Supported by General Fund... (\$86,070)A (Revenue Acct No. 100, Pg 12) (\$53,270)B				
73.01	SALARY & WAGES FULL TIME	17,566.27	17,196.	17,424.
	1 Maint Supvrs ^R ₁₀			4,656.
	1 Custodian ₅			4,392.
	1 Maint Man #1 ₅			4,344.
	1 Maint Man #2 ₄			4,032.
73.02	SALARY & WAGES PART TIME		3,075.	1,075.
73.03	SALARY & WAGES OVERTIME		1,000.	1,000.
73.04	SOCIAL SECURITY	529.10	665.	672.
73.05	WORKMEN'S COMP	188.00	425.	430.
73.06	INSUR PARTIC			372.
73.06-105	Health Ins			264.
73.06-106	Life Ins			108.
73.14	EQUIP-MOBILE	2,673.11	2,200.	2,500.
73.14-4	Equip Rent To Purchase: One Pick-up w/trade\$2,000. One Power Wagon w/trade\$2,800.	2,673.11		2,500.
73.15	EQUIP-NON-MOBILE		400.	2,935.
73.15-26	Small Items			50.
73.15-26A	Amprobe			60.
73.15-26B	100 New Cones			350.
73.15-26C	Paint Striper			2,000.
73.15-26D	Power Auger			375.
73.15-26E	Filing Cabinet			100.

(continued)

CITY OF GRAND JUNCTION, 1962 BUDGET

DEPARTMENT DETAIL

Account	Expenditure	Actual 1960	Estimate 1961	Budget 1962
PUBLIC WORKS DEPARTMENT #70 (continued)				
TRAFFIC OPERATIONS & BUILDING MAINTENANCE Division #73 (continued)				
73.16	MATERIAL & SUPPLIES	\$ 11,166.04	\$ 8,830.	\$ 5,950.
73.16-1	Genl-Stores	9,591.58	250.	s. 250.
73.16-2	Genl-Non-Stores		600.	600.
73.16-25	Parking Mtr Pur Contr	1,574.46	1,780.	
73.16-43	Street Paint		2,500.	2,500.
73.16-44	Parking Mtr Repair			200.
73.16-45	Traffic Signs		1,200.	900.
73.16-46	St Name Signs		500.	500.
73.16-47	Street Lgt Repair		1,000.	500.
73.16-48	Traffic Lgt Repair		1,000.	500.
73.17	UTILITIES	8,427.82	7,995.	8,325.
73.17-7	Heat - City Hall		1,000.	1,200.
73.17-8A	Elec & Power, City Hall		1,900.	1,900.
73.17-8B	Light-Parking Lt		175.	225.
73.17-8C	Trf Signal Elec		4,920.	5,000.
73.18	FACILITY MAINT	778.53	1,100.	800.
73.18-13	Repairs & Replcmts (City Hall)		800.	500.
73.18-32	Janitor Supp (City Hall)		300.	300.
73.19	MISCELLANEOUS	5,364.00	8,912.	9,287.
73.19-2	Genl-Non-Stores		100.	100.
73.19-20	Fire Ins-City Hall		223.	223.
73.19-50A	4th & Rood Lot Rent	1,764.00	1,764.	1,764.
73.19-50B	6th & Rood Lot Rent	3,600.00	3,600.	3,600.
73.19-50C	400 Colo. Lot Rent		3,225	3,600.

(continued)

CITY OF GRAND JUNCTION, 1962 BUDGET

DEPARTMENT DETAIL

Account	Expenditure	Actual 1960	Estimate 1961	Budget 1962
PUBLIC WORKS DEPARTMENT #70 (continued)				
TRAFFIC OPERATIONS & BUILDING MAINTENANCE Division #73 (continued)				
73.30	SPECIAL PROJECTS		\$ 8,800.	(13,000)A (2,500)
	<u>Traffic:</u>			
73.30-A	Pedestrian Signals, 12th & Grand 12th & Main 5th & Grand			
73.30-B	Channelization @ 5th & Grand			
73.30-C	3 Downtown Signals			(10,500)A
	<u>Buildings:</u>			
73.30-D	Interior Painting, City Hall			1,900.
73.30-E	Partitions at City Shop			600.
73.30-F	Air Conditioning City Hall			
73.30-G	Paving City Hall Parking Lot			
73.31	CAPITAL IMPROVEMENTS			(22,300)A (-0-)B
73.31-A	Street Lights, downtown (net)			(22,300)A

(continued)

CITY OF GRAND JUNCTION, 1962 BUDGET

DEPARTMENT DETAIL

Account	Expenditure	Actual 1960	Estimate 1961	Budget 1962
PUBLIC WORKS DEPARTMENT #70 (continued)				
EQUIPMENT SHOPS Division #74		-0-	-0-	-0-
Supported by Equipment Fund.....\$201,637. (Revenue Acct No. 300, Pg 14)				
Less Total of Equip Rentals in other accounts and carry- over totals,		-120,423.22	-135,392.	-201,637.
##	Sub-Total	120,423.22	135,392.	201,637.
<hr/>				
74.01	SALARY & WAGES FULL TIME	\$ 25,114.30	\$ 22,300.	\$ 22,404.
	1 Shop Supv R			5,328.
	3 Mechanic 12			13,080.
	1 Lube Man 6			3,996.
	4			
74.02	SALARY & WAGES PART TIME (Inc Radio maint)		1,700.	3,700.
74.03	SALARY & WAGES OVERTIME		2,000.	2,000.
74.04	SOCIAL SECURITY	740.61	777.	816.
74.05	WORKMEN'S COMP	227.00	518.	522.
74.06	INSUR PARTIC			290.
74.06-105	Health Ins			218.
74.06-106	Life Ins.			72.
74.13	PRINTING		50.	50.
74.13-12	Forms		40.	40.
74.13-14	Adv		10.	10.

(continued)

CITY OF GRAND JUNCTION, 1962 BUDGET

DEPARTMENT DETAIL

Account	Expenditure	Actual 1960	Estimate 1961	Budget 1962
PUBLIC WORKS DEPARTMENT #70 (continued)				
EQUIPMENT SHOPS Division #74 (continued)				
74.14	EQUIP-MOBILE	\$ 49,361.50	\$ 50,780.	\$ 98,735.
74.14-1	Equip Rent	1,059.06	780.	e. 780.
74.14-13	Repairs--outside	1,751.34	2,000.	2,000.
74.14-59	<u>Equipment Purchases:</u>	46,551.10	48,000.	70,930.
	<u>Division</u> <u>Equipment</u>			
	<u>Number</u> <u>Cost</u>			
	31.....\$ 2,100.			
	71..... 5,800.			
	72..... 25,200.			
	73..... 4,800.			
	75..... 7,750.			
	82..... 3,000.			
	91..... 2,020.			
	92..... 9,260.			
	111..... 1,800.			
	112..... 1,200.			
	116..... 3,000.			
	Conting Purch 5,000.			
74.14-79	Radio Equip			12,638.
74.14-97	Future Equip Purchase			12,387.
74.15	EQUIP-NON-MOBILE	997.09	1,700.	2,500.
74.15-26	Small Items	997.09		125.
	Honing Machine			1,350.
	Alt. Kit			40.
	Mandrel Sets			100.
	Cyl. Guage			35.
	Replacements in			
	Die & Reamer Set			200.
	Transmission Jack			150.
	Air Compressor for			
	Paint Shop			500.

(continued)

CITY OF GRAND JUNCTION, 1962 BUDGET

DEPARTMENT DETAIL

Account	Expenditure	Actual 1960	Estimate 1961	Budget 1962
PUBLIC WORKS DEPARTMENT #70 (continued)				
EQUIPMENT SHOPS Division #74 (continued)				
74.16	MATERIAL & SUPPLIES	\$ 42,850.85	\$ 48,050.	\$ 51,900.
74.16-1	Genl-Stores	42,850.85	400.	s. 500.
74.16-2	Genl-Non-Stores		3,000.	3,500.
74.16-17	Outside Mnt		2,000.	2,000.
74.16-23	Parts & Mtl		18,000.	18,750.
74.16-37	Gasoline		15,000.	17,000.
74.16-38	Oil & Grease		1,500.	1,500.
74.16-39	Diesel Fuel		900.	900.
74.16-40	Anti Freeze		250.	250.
74.16-41	Tires		6,000.	6,000.
74.16-42	St Broom Mat'1		1,000.	1,500.
74.17	UTILITIES	1,020.14	2,320.	2,320.
74.17-6	Telephone	104.40	170.	170.
74.17-7	Heat		1,300.	1,300.
74.17-8	Elec	915.74	850.	850.
74.18	FACILITY MAINT	111.73	1,000.	1,000.
74.18-13	Repr & Replc	111.73	1,000.	1,000.
74.19	MISCELLANEOUS		3,697.	8,900.
74.19-1	Genl-Stores		400.	s. 400.
74.19-2	Genl-Non-Stores		800.	1,000.
74.19-11	Oper Cap (1963)			5,000.
74.19-17	Fire Ins		97.	100.
	Fleet Ins.		2,000.	1,900.
74.19-21	Laundry		400.	500.
74.30	SPECIAL PROJECTS		500.	6,500.
74.30-A	Gas Line from Sewer Plant			3,500.
74.30-B	Quonset Hut Move			3,000.

(continued)

CITY OF GRAND JUNCTION, 1962 BUDGET

DEPARTMENT DETAIL

Account	Expenditure	Actual 1960	Estimate 1961	Budget 1962
PUBLIC WORKS DEPARTMENT #70 (continued)				
SANITATION Division #75 (continued)				
75.16	MATERIAL & SUPPLIES	\$ 87.37	\$ 250.	\$ 199.
75.16-1	Genl-Stores	87.37		s. 100.
75.16-2	Genl-Non-Stores			99.
75.19	MISCELLANEOUS	300.00	4,295.	14,205.
75.19-2	Genl-Non-Stores		1,200.	800.
75.19-5	Dues & Pubct'ns		5.	5.
75.19-11	Oper Cap (1963)			10,000.
75.19-21	Laundry		1,290.	1,600.
75.19-103	Paper Baling	300.00	1,800.	1,800.
75.30	SPECIAL PROJECTS	31,000.00	4,000.	1,200.
	Trans to General Fund	13,000.00		
75.30-A	Garbage Contract	18,000.00	4,000.	1,200.

(continued)

CITY OF GRAND JUNCTION, 1962 BUDGET

DEPARTMENT DETAIL

Account	Expenditure	Actual 1960	Estimate 1961	Budget 1962
PUBLIC WORKS DEPARTMENT #70 (continued)				
AIRPORT Division #76		\$ 66,087.54	\$191,705.	\$ 60,327.*
Supported by Airport Fund....\$60,327. (Revenue Acct No. 600, Pg 16)		*Does not include \$50,000. in Special Projects con- tributed in work.		
76.01	SALARIES & WAGES FULL TIME	12,186.79	14,723.	14,000.
	2 Custodians $\frac{R}{4}$			7,680.
	Spec Trans to Gen Fund for Mgmt & Admn.			3,680.
	Elect Maint ($\frac{1}{2}$ salary, other $\frac{1}{2}$ in #62, Insp)			2,640.
76.02	SALARIES & WAGES PART TIME			4,000.
76.03	SALARIES & WAGES OVERTIME		100.	100.
76.04	SOCIAL SECURITY	338.84	460.	580.
76.05	WORKMEN'S COMP	213.00	147.	181.
76.06	INSUR PARTIC			132.
76.06-105	Health Ins			96.
76.06-106	Life Ins			36.
76.14	EQUIP-MOBILE	1,576.84	2,500.	4,500.
76.14-4	Equip Rental	1,576.84		e.4,500.
76.15	EQUIP-NON-MOBILE		650.	1,170.
76.15-26	Small Items			75.
76.15-26A	Fire Siren			550.
76.15-26B	Hose Reels for Crash Truck			240.
76.15-26C	150' of fire hose			145.
76.15-26D	4 Aluminized hoods			160.
76.16	MATERIAL & SUPPLIES	4,181.26	6,930.	5,800.
76.16-1	Genl-Stores	3,593.11	885.	s.1,000.
76.16-2	Genl-Non-Stores	588.15	5,735.	4,000.
76.16-15	Foam f/cr truck		310.	800.
(continued)				

CITY OF GRAND JUNCTION, 1962 BUDGET

DEPARTMENT DETAIL

Account	Expenditure	Actual 1960	Estimate 1961	Budget 1962
PUBLIC WORKS DEPARTMENT #70 (continued)				
AIRPORT Division #76 (continued)				
76.17	UTILITIES	\$ 7,769.60	\$ 10,470.	\$ 14,725.
76.17-6	Telephone	35.10	125.	125.
76.17-7	Heat		2,145.	3,800.
76.17-8	Elec	6,599.50	6,000.	8,000.
76.17-9	Water & Sewer	1,135.00	2,200.	2,800.
76.18	FACILITY MAINT		2,600.	5,614.
76.18-13	Rep & Maint		1,300.	2,800.
76.18-16	Maint-Contr			1,014.
76.18-32	Janitor Supp		1,300.	1,800.
76.19	MISCELLANEOUS	1,459.03	3,125.	5,525.
76.19-2	Genl-Non-Stores		1,075.	1,100.
76.19-5	Dues & Pubct'ns			50.
76.19-10	Conference Exp			175.
76.19-11	Oper Capital			1,000.
76.19-16	Sweeping Contr		345.	340.
76.19-18	Trans. (custodian)			
76.19-20	Insurance	859.03	1,180.	2,500.
76.19-28	Background Music		225.	360.
	Space for Fire Trk	600.00	300.	
76.30	SPECIAL PROJECTS			54,000.*
76.30-1	Reconst Ramp Area			6,000.
76.30-2	Taxiway Const			30,000.
76.30-3	Parking Lot Const			1,000.
76.30-4	Concr Surfacing of Turning Circle			4,000.
76.30-5	Sealcoat E-W Runway			13,000.
76.31	CAPITAL IMPROVEMENTS	38,362.18	150,000.	-0-
76.31-A	Airport Control Tower	38,362.18	150,000.	
76.31-B	Water line to Airprt			
<p>*\$50,000. of work to be done by County <u>not</u> included in totals; City half to be charged against "1962 Credit" of \$37,000. in County Road & Bridge Fund. (See Div #72 for balance.)</p>				

CITY OF GRAND JUNCTION, 1962 BUDGET

DEPARTMENT SUMMARY

UTILITIES DEPARTMENT

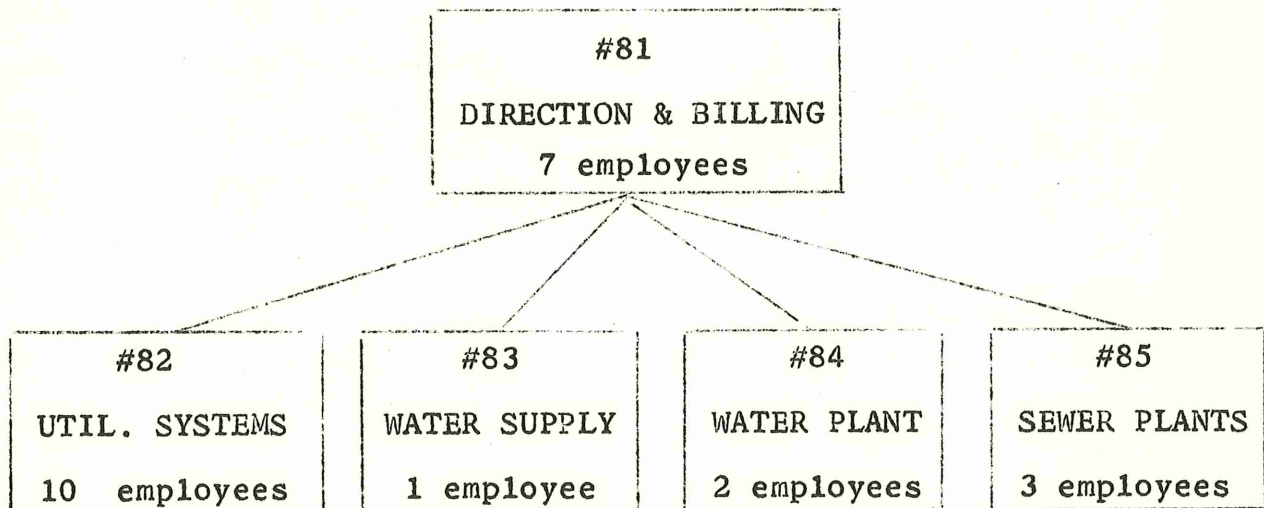
PURPOSE AND JUSTIFICATION: The Water and Sanitary Sewer utilities owned and operated by the City comprise this department. All activities involved in securing water supplies, building and maintaining water and sewer lines and filtering water or treating sewage, whether done by City forces or by contract, are covered within these accounts.

The 1962 budget reflects a true picture of costs versus revenues from the Water and Sewer Funds since all funds from outstanding bond issues have now been used up. The Capital Outlay heading below would have been \$60,000. less for 1962 had the anticipated reservoir improvements been undertaken as budgeted in 1961. Operation of the new microstrainer treatment plant is shown under the Water Supply division, #83.

<u>COMPARATIVE RECAP:</u>	Actual 1960	Budget 1961	Budget 1962
<u>Supporting Funds:</u>	\$787,366.54	\$801,170.	\$773,253.
Water Fund.....	683,505.45	708,050.	674,266.
Sewer Fund.....	103,861.09	93,120.	98,987.
<u>Expenditures:</u>	787,366.54	801,170.	773,253.
Personal Services.....	122,153.64	112,634.	123,560.
Operating Expenses.....	145,999.62	186,889.	193,938.
Capital Outlay.....	519,213.28	501,647.	455,755.

Util
80

DEPARTMENTAL ORGANIZATION:



CITY OF GRAND JUNCTION, 1962 BUDGET

DEPARTMENT DETAIL

Account	Expenditure	Actual 1960	Estimate 1961	Budget 1962
UTILITIES DEPARTMENT #80		\$787,366.54	\$456,032.	\$773,253.
DIRECTION & BILLING Division #81		23,140.95	45,284.	59,737.
Supported by Water Fund....\$59,737. (Revenue Acct No. 200, Pg 14)				
81.01	SALARIES & WAGES FULL TIME	16,631.28	33,384.	33,756.
	<u>R</u>			
	1 Utility Director	16		8,040.
	1 Utility Adm	11		5,280.
	1 Chief Mtr Reader	6		4,392.
	2 Mtr Readers	5		8,100.
	1 Clerk #1	3		3,972.
	1 Clerk #2	2		3,972.
81.03	SALARIES & WAGES OVERTIME			100.
81.04	SOCIAL SECURITY	474.05	896.	939.
81.05	WORKMEN'S COMP	65.00	175.	202.
81.06	INSUR PARTIC			330.
81.06-105	Health Ins			204.
81.06-106	Life Ins			126.
81.10	OFFICE SUPPLIES	2,062.73	3,250.	3,500.
81.10-1	Gen-Stores	262.73	100.	s. 250.
81.10-2	Gen-Non-Stores		150.	250.
81.10-3	Postage	1,800.00	3,000.	3,000.
81.11	OFFICE EQUIP			8,900.
	Replace 2 Bookkeeping Mach. 1 Typewriter, non-elec.			8,770. 130.
81.12	OFFICE EQUIP MAINT	392.35	500.	400.
81.12-16	Maint Contr			200.
81.12-19	Maint Serv			200.

(continued)

CITY OF GRAND JUNCTION, 1962 BUDGET

DEPARTMENT DETAIL

Account	Expenditure	Actual 1960	Estimate 1961	Budget 1962
UTILITIES DEPARTMENT #80 (continued)				
DIRECTION & BILLING Division #81 (continued)				
81.13	PRINTING		\$ 450.	\$ 700.
81.13-12	Forms		400.	600.
81.13-14	Adv		50.	100.
81.14	EQUIP-MOBILE	3,100.34	3,300.	3,600.
81.14-4	Equip Rental	3,100.34	3,300.	e.3,600.
81.15	EQUIP-NON-MOBILE		20.	200.
81.15-26	Small Items			200.
81.17	UTILITIES	390.20	420.	420.
81.17-6	Telephone	390.20		420.
81.19	MISCELLANEOUS	25.00	1,689.	6,690.
81.19-2	Genl-Non-Stores		40.	40.
81.19-5	Dues & Pubct'ns	25.00	39.	50.
81.19-10	Conference Exp		70.	100.
81.19-18	Trans.		40.	100.
81.19-65	Utility Engineering		1,500.	4,400.
81.19-71	Legal Fees			2,000.
81.30	SPECIAL PROJECTS		1,200.	

(continued)

CITY OF GRAND JUNCTION, 1962 BUDGET

DEPARTMENT DETAIL

Account	Expenditure	Actual 1960	Estimate 1961	Budget 1962
UTILITIES DEPARTMENT #80 (continued)				
UTILITIES SYSTEMS Division #82		\$573,052.12	\$300,046.	\$490,662.
Supported by Water Fund....\$490,662. (Revenue Acct No. 200, Pg 14)				
82.01	SALARIES & WAGES FULL TIME	56,031.22	43,134.	43,134.
				R
	1 Utility Supt			5,328.
	1 Utility Frman			4,752.
	4 Util'y Crmen #1			17,472.
	4 Util'y Crmen #2			15,582.
82.03	SALARIES & WAGES OVERTIME		8,000.	8,000.
82.04	SOCIAL SECURITY	1,410.93	1,460.	1,550.
82.05	WORKMEN'S COMP	240.00	325.	485.
82.06	INSUR PARTIC			531.
82.06-105	Health Ins			396.
82.06-106	Life Ins			135.
82.14	EQUIP-MOBILE	10,239.13	18,000.	18,380.
82.14-4	Equip Rent To Purchase: One tank truck w/trade\$3,000.	10,239.13		18,380.
82.15	EQUIP, NON-MOBILE		100.	500.
82.15-26	Small Items			
82.16	MATERIAL & SUPPLIES	72,106.68	42,482.	45,000.
82.16-1	Genl-Stores		390.	s. 500.
82.16-2	Genl-Non-Stores	53,859.47		500.
82.16-11	Meters & Yokes	18,247.21	10,364.	10,000.
82.16-58	Water Line Material		31,728.	33,000.
82.16-58A	Sewer Line Material			1,000.

(continued)

CITY OF GRAND JUNCTION, 1962 BUDGET

DEPARTMENT DETAIL

Account	Expenditure	Actual 1960	Estimate 1961	Budget 1962
UTILITIES DEPARTMENT #80 (continued)				
UTILITIES SYSTEMS Division #82 (continued)				
82.18	FACILITY MAINT	\$	\$ 1,200.	\$ 1,500.
82.18-44	Water Meter Repair			1,500.
82.19	MISCELLANEOUS	10,041.40	6,500.	56,700.
82.19-2	Genl-Non-Stores		300.	500.
82.19-11	Oper Capital (1963)			50,000.
82.19-22	Meals		200.	200.
82.19-96	Street Repairs	10,041.40	6,000.	6,000.
82.30	SPECIAL PROJECTS	54,000.00	10,000.	10,000.
82.30-54	Water Line Ext		4,489.	9,000.
82.30-55	Sewer Line Ext		5,511.	1,000.
82.31	CAPITAL IMPROVEMENTS	208,491.98	235.	161,107.
82.31-A	Water Main Ext			101,107.
82.31-B	Water Main Replacement			60,000.
82.32	DEBT RETIREMENT	160,490.78	168,610.	143,775.
82.32-25	Debt Serv Mtr & Lns	160,490.78	168,610.	143,775.

(continued)

CITY OF GRAND JUNCTION, 1962 BUDGET

DEPARTMENT DETAIL

Account	Expenditure	Actual 1960	Estimate 1961	Budget 1962
UTILITIES DEPARTMENT #80 (continued)				
WATER SUPPLY Division #83		\$ 62,052.23	\$ 20,187.	\$ 87,189.
Supported by Water Fund....\$87,189. (Revenue Acct No. 200, Pg 14)				
83.01	SALARIES & WAGES FULL TIME	8,573.85	5,150.	3,972.
		<u>R</u>		
	1 Intake Tender	7		3,972.
83.02	SALARIES & WAGES PART TIME			2,432.
	Resv Tndr (4 mo @ \$308.) Ditch Rider			1,832. 600.
83.03	SALARIES & WAGES OVERTIME		600.	200.
83.04	SOCIAL SECURITY	250.73	173.	188.
83.05	WORKMEN'S COMP	48.00	20.	56.
83.06	INSUR PARTIC			66.
83.06-105	Health Ins			48.
83.06-106	Life Ins.			18.
83.14	EQUIP-MOBILE	1,225.55	100.	200.
83.14-14	Equip Rental (Build Sno-Cat Trlr)	1,225.55		e. 200.
83.15	EQUIP, NON-MOBILE		200.	200.
83.15-26	Small Items			
83.16	MATERIAL & SUPPLIES	6,395.84	6,070.	6,200.
83.16-1	Genl-Stores	2,572.95	290.	s. 200.
83.16-2	Genl-Non-Stores			500.
83.16-5	Chemicals	3,822.89	5,780.	5,500.

(continued)

CITY OF GRAND JUNCTION, 1962 BUDGET

DEPARTMENT DETAIL

Account	Expenditure	Actual 1960	Estimate 1961	Budget 1962
UTILITIES DEPARTMENT #80 : (continued)				
WATER SUPPLY Division #83 (continued)				
83.17	UTILITIES	\$ 767.77	\$ 814.	\$ 1,665.
83.17-6	Telephone	58.20	65.	65.
83.17-7	Heat	334.44	335.	600.
83.17-8	Elec	375.13	414.	1,000.
83.18	FACILITY MAINT		100.	500.
83.18-13	Repairs & Replcmts			500.
83.19	MISCELLANEOUS	744.51	1,960.	2,410.
83.19-2	Cloud Seeding Genl-Non-Stores		1,000. 200.	1,100.
83.19-18	Trans	81.84	250.	550.
83.19-20	Fire Ins.		10.	10.
83.19-51	Fees & Assmts	662.67	500.	750.
83.31	CAPITAL IMPROVEMENT	44,045.98	5,000.	69,100.
83.31-A	Reservoir Improvements			60,000.
83.31-B	Water Rights Accrual			9,100.

(continued)

CITY OF GRAND JUNCTION, 1962 BUDGET

DEPARTMENT DETAIL

Account	Expenditure	Actual 1960	Estimate 1961	Budget 1962
UTILITIES DEPARTMENT #80 (continued)				
WATER PLANT Division #84		\$ 25,260.15	\$ 25,501.	\$ 36,678.
Supported by Water Fund....\$36,678. (Revenue Acct No. 200, Pg 14)				
84.01	SALARIES & WAGES FULL TIME	11,546.94	8,952.	9,240.
		R		
	1 Filter Pl Chief	10		4,896.
	1 Filter Pl Oper	5		4,344.
84.02	SALARIES & WAGES PART TIME		1,078.	1,400.
84.03	SALARIES & WAGES OVERTIME		370.	400.
84.04	SOCIAL SECURITY	346.38	312.	342.
84.05	WORKMEN'S COMP	80.00	40.	101.
84.06	INSUR PARTIC			96.
84.06-105	Health Ins.			60.
84.06-106	Life Ins.			36.
84.14	EQUIP-MOBILE	412.83	100.	100.
84.14-4	Equip Rental	412.83		e. 100.
84.15	EQUIP, NON-MOBILE		2,100.	350.
84.15-26	Small Items		110.	350.
84.15-A			1,990.	
84.16	MATERIAL & SUPPLIES	11,007.04	7,250.	10,800.
84.16-1	Genl-Stores	3,195.84		s. 300.
84.16-2	Genl-Non-Stores		400.	500.
84.16-15	Chemicals	7,811.20	6,850.	10,000.

(continued)

CITY OF GRAND JUNCTION, 1962 BUDGET

DEPARTMENT DETAIL

Account	Expenditure	Actual 1960	Estimate 1961	Budget 1962
UTILITIES DEPARTMENT #80 (continued)				
WATER PLANT Division #84 (continued)				
84.17	UTILITIES	\$ 1,601.41	\$ 2,870.	\$ 2,890.
84.17-6	Telephone	325.87	290.	290.
84.17-7	Heat	112.20	1,300.	1,300.
84.17-8	Elec.	1,163.34	1,280.	1,300.
84.18	FACILITY MAINT		500.	600.
84.18-13	Repair & Replacement (Bldg & Plant)		400.	300.
84.18-56	Reservoir Maint		100.	300.
84.19	MISCELLANEOUS	265.55	239.	359.
84.19-2	Genl-Non-Stores			50.
84.19-10	Training School	225.55	200.	250.
84.19-18	Trans	40.00		20.
84.19-20	Fire Ins.		39.	39.
84.31	CAPITAL IMPROVEMENTS		1,690.	10,000.
84.31-A	Plant Exp, 1st Accrual			10,000.

(continued)

CITY OF GRAND JUNCTION, 1962 BUDGET

DEPARTMENT DETAIL

Account	Expenditure	Actual 1960	Estimate 1961	Budget 1962
UTILITIES DEPARTMENT #80 (continued)				
SEWER PLANTS Division #85		\$103,861.09	\$ 65,014.	\$ 98,987.
Supported by Sewer Fund....\$98,987.) (Revenue Acct No. 500, Pg 15)				
85.01	SALARIES & WAGES FULL TIME	25,488.81	13,308.	13,488.
	<u>R</u>			
	1 Disp P1 Chief 9			4,752.
	2 Disp P1 Operators 5			4,392.
				4,344.
85.02	SALARIES & WAGES PART TIME			1,500.
85.03	SALARIES & WAGES OVERTIME		700.	300.
85.04	SOCIAL SECURITY	741.20	420.	477.
85.05	WORKMEN'S COMP	225.25	110.	113.
85.06	INSUR PARTIC			162.
85.06-105	Health Ins			108.
85.06-106	Life Ins.			54.
85.14	EQUIP-MOBILE	3,755.20	300.	480.
85.14-4	Equip Rental	3,755.20	300.	e. 480.
85.15	EQUIP, NON-MOBILE		50.	50.
85.15-26	Small Items			
85.16	MATERIAL & SUPPLIES	6,677.29	2,500.	4,000.
85.16-2	Genl-Non-Stores	5,411.93	1,600.	500.
85.16-15	Chemicals	1,265.36	900.	3,500.
85.17	UTILITIES	5,325.90	6,146.	6,324.
85.17-6	Telephone	317.95	324.	324.
85.17-7	Heat	225.33	509.	500.
85.17-8	Elec	4,782.62	5,313.	5,500.

(continued)

CITY OF GRAND JUNCTION, 1962 BUDGET

DEPARTMENT DETAIL

Account	Expenditure	Actual 1960	Estimate 1961	Budget 1962
UTILITIES DEPARTMENT #80 (continued)				
SEWER PLANTS Division #85 (continued)				
85.18	FACILITY MAINT	\$	\$ 200.	\$ 500.
85.18-13	Repair & Replacement		200.	500.
85.19	MISCELLANEOUS	9,462.90	670.	9,820.
85.19-2	Genl-Non-Stores			100.
85.19-5	Dues & Publict'ns	10.00		10.
85.19-10	Training School	92.00	110.	150.
85.19-11	Oper Capital (1963)			9,000.
85.19-18	Trans	360.00	360.	360.
85.19-20	Fire Ins.		200.	200.
	Trans Gen Fund	9,000.00		
85.30	SPECIAL PROJECTS		1,000.	500.
85.30-A	Odor Control Const			500.
85.31	CAPITAL IMPROVEMENTS	11,684.54		21,498.
85.32	DEBT RETIREMENT	40,500.00	39,610.	39,775.
85.32-25	Plant Improve	40,500.00	39,610.	39,775.

CITY OF GRAND JUNCTION, 1962 BUDGET

DEPARTMENT SUMMARY

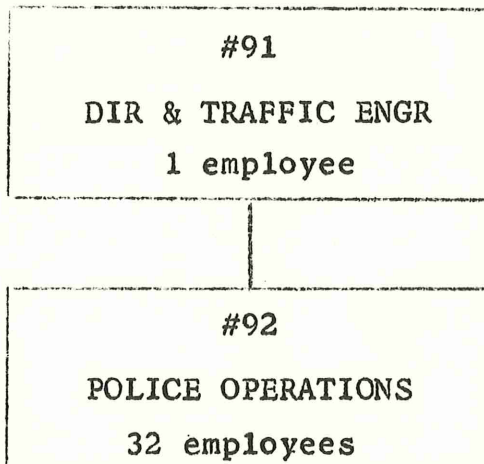
POLICE DEPARTMENT

PURPOSE & JUSTIFICATION: The maintenance of peace and order through the enforcement of State laws and City ordinances is the primary role of this department. Traffic control and regulation comprises the major share of departmental activity. The Chief of Police also acts as the City Traffic Engineer in determining what protective devices are needed throughout the City.

The only notable change from last year is the addition of three clerk-dispatcher positions. Similar positions were requested for 1961 but were deferred until a closer look at police operation was made. Although the Police Chief represents the City in Civil Defense and Community Disaster efforts, money for this is now budgeted under the General Government Department #140.

<u>COMPARATIVE RECAP:</u>	Actual 1960	Budget 1961	Budget 1962
<u>Supporting Funds:</u>	\$213,433.07	\$216,917.	\$231,060.
General Fund.....	213,433.07	216,917.	231,060.
<u>Expenditures:</u>	\$213,433.07	216,917.	\$231,060.
Personal Services.....	151,424.97	154,728.	166,643.
Operating Expenses.....	36,684.74	40,664.	42,807.
Capital Outlay.....	25,323.36	21,525.	21,610.

DEPARTMENTAL ORGANIZATION:



Pol
90

CITY OF GRAND JUNCTION, 1962 BUDGET

DEPARTMENT DETAIL

Account	Expenditure	Actual 1960	Estimate 1961	Budget 1962
POLICE DEPARTMENT #90		\$213,433.07	\$214,973.	\$231,060.
DIRECTION & TRAFFIC ENGINEERING Division #91		7,226.68	10,169.	11,085.
Supported by General Fund....\$231,060. (Revenue Acct No. 100, Pg 12)				
91.01	SALARIES & WAGES FULL TIME	6,840.00	6,960.	7,104.
	1 Chief <u>R</u> 14			7,104.
91.04	SOCIAL SECURITY (Police Pension)	120.00	144.	150.
91.05	WORKMEN'S COMP	100.00	40.	64.
91.06	INSUR PARTIC			30.
91.06-106	Life Ins			30.
91.10	OFFICE SUPPLIES		250.	350.
91.10-1	Genl-Stores			s. 250.
91.10-2	Genl-Non-Stores			25.
91.10-3	Postage			75.
91.12	OFFICE EQUIP MAINT		50.	50.
91.12-16	Maint Contract			
91.12-19	Maint Service		50.	50.
91.13	PRINTING		700.	725.
	Tickets			575.
91.13-12	Forms			100.
91.13-14	Adv			50.
91.14	EQUIP-MOBILE		1,800.	2,352.
91.14-4	Equip Rent To Purchase: One Sedan w/trade....\$2,020.			e. 2,352.
91.19	MISCELLANEOUS	166.68	225.	260.
91.19-2	Genl-Non-Stores			25.
91.19-5	Dues & Publicat'ns	20.00		35.
91.19-10	Conference Exp	146.68		200.

(continued)

CITY OF GRAND JUNCTION, 1962 BUDGET

DEPARTMENT DETAIL

Account	Expenditure	Actual 1960	Estimate 1961	Budget 1962
POLICE DEPARTMENT #90 (continued)				
OPERATIONS Division #92 (continued)				
92.14	EQUIP-MOBILE	\$ 21,186.28	\$ 24,000.	\$ 24,945.
92.14-4	Equip Rental <u>To Purchase:</u> Three sedans w/trade....\$6,060. One Pickup w/trade....\$2,000. One Mtrcycle (3-wheel) w/trade....\$1,200.	21,186.28	24,000.	e.24,945.
92.15	EQUIP, NON-MOBILE	2,678.78	3,000.	2,525.
92.15-26	Small Items		500.	25.
92.15-92	Uniforms & Clo Allow	2,678.78	2,500.	2,500.
92.16	MATERIALS & SUPPLIES	5,015.20	2,200.	2,500.
92.16-1	Genl-Stores	5,015.20	200.	s. 500.
92.16-2	Genl-Non-Stores			
92.16-66	Prisoner's Food & Exp		2,000.	2,000.
92.17	UTILITIES	4,990.21	4,800.	4,800.
92.17-6	Telephone	1,451.57	1,200.	1,200.
92.17-7	Heat		1,000.	1,000.
92.17-8	Elec	3,538.64	2,600.	2,600.
92.18	FACILITY MAINT		225.	250.
92.18-13	Repair & Replacement			100.
92.18-19	Maint Service			150.

(continued)

CITY OF GRAND JUNCTION, 1962 BUDGET

DEPARTMENT DETAIL

Account	Expenditure	Actual 1960	Estimate 1961	Budget 1962
POLICE DEPARTMENT #90 (continued)				
OPERATIONS Division #92 (continued)				
92.19	MISCELLANEOUS	\$ 2,647.59	\$ 4,200.	\$ 4,150.
92.19-2	Genl-Non-Stores		600.	100.
92.19-10	Training Schools	212.14		200.
92.19-20	Fire Ins.			-0-
92.19-49	Dog Pound Service	2,400.00	3,600.	3,600.
92.19-72	Medical & Hospital	35.45		200.
92.19-73	Evidence Costs			50.
92.30	SPECIAL PROJECTS		175.	-0-
92.30-A	Paving Parking Area			-0-
92.31	CAPITAL OUTLAY	4,633.36		-0-
92.32	DEBT RETIREMENT	20,690.00	21,075.	21,610.
92.32-25	Police Bldg	20,690.00	21,075.	21,610.

CITY OF GRAND JUNCTION, 1962 BUDGET

DEPARTMENT SUMMARY

FIRE DEPARTMENT

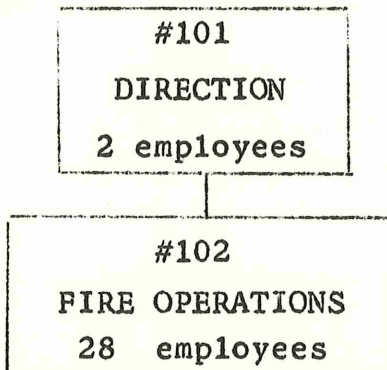
PURPOSE & JUSTIFICATION: Fire protection for all property within the City is the responsibility of this program. Emergency rescue also is a major function of the fire department. Fire prevention as a reliable means of reducing fire hazard and frequency is also a duty assigned to this program. The greater Grand Junction area is provided fire protection through the City Fire Department which fights all fire district fires in exchange for use of three pieces of fire apparatus provided by the district.

As anticipated in 1960, four more firemen have been added to the department for 1962, accounting for \$16,272. of the budgeted increase. Last year a total of \$37,488. was budgeted as a "first accrual" toward a new fire station. If Operation Foresight is undertaken, \$16,379. ("A" program) will be added to this in 1962. If Foresight is not initiated, \$34,203. ("B" program) will be added. In either case, construction of the new Fire Station is planned for 1963.

<u>COMPARATIVE RECAP:</u>	Actual 1960	Budget 1961	Budget 1962
<u>Supporting Funds:</u>	\$146,373.23	\$186,212.	\$223,344(A) 241,168(B)
General Fund.....	146,373.23	186,212.	\$209,809(A) 229,169(B)
<u>Expenditures:</u>	\$146,373.23	\$186,212.	\$223,344(A) 241,168(B)
Personal Services.....	127,676.10	131,641.	154,318.
Operating Expenses.....	13,822.13	13,883.	15,159.
Capital Outlay.....	4,875.00	40,688.	53,867(A) 71,691(B)

Fir
100

DEPARTMENTAL ORGANIZATION:



CITY OF GRAND JUNCTION, 1962 BUDGET

DEPARTMENT DETAIL

Account	Expenditure	Actual 1960	Estimate 1961	Budget 1962
FIRE DEPARTMENT #100		\$146,373.23	\$148,198.	(\$223,344)A (\$241,168)B
DIRECTION Division #101		12,920.00	14,083.	14,687.
Supported by General Fund....\$14,687. (Revenue Acct No. 100, Pg 12)				
101.01	SALARIES & WAGES FULL TIME	12,180.00	12,288.	12,528.
	1 Fire Chief	14	6,528.	6,672.
	1 Ass't Fire Chief	12	5,760.	5,856.
101.04	SOCIAL SECURITY & PENSION	240.00	288.	300.
101.05	WORKMEN'S COMP	200.00	25.	110.
101.06	INSUR PARTIC			114.
101.06-105	Health Ins			60.
101.06-106	Life Ins			54.
101.10	OFFICE SUPPLIES		20.	45.
101.10-1	Genl-Stores			s. 26.
101.10-2	Genl-Non-Stores			15.
101.10-3	Postage			4.
101.12	OFFICE EQUIP MAINT		25.	15.
101.12-19	Maint Services			
101.13	PRINTING		70.	70.
101.13-12	Forms			25.
101.13-14	Adv			45.
101.14	EQUIP-MOBILE		775.	780.
101.14-4	Equip Rental		775.	e. 780.
101.18	FACILITY MAINT		25.	75.
101.18-13	Repair & Replacements		25.	(roof) 65. 10.

(continued)

CITY OF GRAND JUNCTION, 1962 BUDGET

DEPARTMENT DETAIL

Account	Expenditure	Actual 1960	Estimate 1961	Budget 1962
FIRE DEPARTMENT #100 (continued)				
DIRECTION				
Division #101 (continued)				
101.19	MISCELLANEOUS	\$ 300.00	\$ 567.	\$ 650.
101.19-2	Genl-Non-Stores			16.
101.19-5	Dues & Publications			54.
	Fire Engineering	(\$ 8.)		
	Fire Sta Digest	(\$ 6.)		
	Nat'l Fire Prev.			
	Assoc.	(\$15.)		
	Internat'l Assoc			
	Fire Chiefs	(\$15.)		
	Others	(\$10.)		
101.19-10	Conference Expense			280.
	Fire Defense Inst	(\$100.)		
	Mo Valley Conf	(\$150.)		
	St Firemans Assn.	(\$ 30.)		
101.19-18	Transportation	300.00		300.

(continued)

CITY OF GRAND JUNCTION, 1962 BUDGET

DEPARTMENT DETAIL

Account	Expenditure	Actual 1960	Estimate 1961	Budget 1962
FIRE DEPARTMENT #100 (continued)				
OPERATIONS Division #102		\$133,453.23	\$134,115.	(\$208,657)A (\$226,481)B
Supported by General Fund....(\$208,657)A (\$226,481)B (Revenue Acct No. 100, Pg 12)				
102.01	SALARIES & WAGES FULL TIME	111,243.54	113,952.	132,360.
	R			
	2 Captains 11			11,328.
	4 Lieutenants 10			21,672.
	22 Firemen 8			99,360.
102.02	SALARIES & WAGES PART TIME		800.	800.
102.03	SALARIES & WAGES OVERTIME			1,200.
102.04	SOCIAL SECURITY & PENSION	3,269.56	3,400.	4,200.
102.05	WORKMEN'S COMP	543.00	675.	1,170.
102.06	INSUR PARTIC			1,536.
102.06-105	Health Ins			960.
102.96-106	Life Ins			576.
102.12	OFFICE EQUIP MAINT		21.	20.
102.12-19	Maint Services			20.
102.14	EQUIP-MOBILE	752.37	3,795.	4,310.
102.14-4	Equip Rental	752.37	3,795.	e. 4,310.

(continued)

CITY OF GRAND JUNCTION, 1962 BUDGET

DEPARTMENT DETAIL

Account	Expenditure	Actual 1960	Estimate 1961	Budget 1962
FIRE DEPARTMENT #100 (continued)				
OPERATIONS				
Division #102 (continued)				
102.15	EQUIP, NON-MOBILE	\$ 2,246.48	\$ 3,400.	\$ 4,709.
102.15-13	Repairs & Replacments	19.63	300.	150.
102.15-26	Small Items (Radio)		600.	100.
102.15-26A	Air Comp Sta #2			200.
102.15-74	Fire Hose Replacement			1,610.
102.15-95	Uniforms & Clothing Allowance	2,226.85	2,500.	2,649.
102.16	MATERIAL & SUPPLIES	7,143.70	580.	585.
102.16-1	Genl-Stores	7,125.18	450.	s. 450.
102.16-2	Genl-Non-Stores		100.	100.
102.16-63	First Aid Supp (Oxygen)	18.52	30.	35.
102.17	UTILITIES	2,781.33	2,910.	3,000.
102.17-6	Telephone	743.97	1,070.	1,070.
102.17-7	Heat	787.14	800.	800.
102.17-8	Elec	1,250.22	1,040.	1,040.
102.18	FACILITY MAINT	50.00	770.	450.
102.18-13	Repairs & Replacements		320.	
102.18-19	Maint Serv (mop)	50.00	450.	450.
102.19	MISCELLANEOUS	548.25	825.	450.
102.19-2	Genl-Non-Stores	2.50		100.
102.19-5	Dues & Sub	29.00		
102.19-10	Training Schools	172.21		300.
102.19-20	Ins - $\frac{1}{2}$ PL&PD	305.93		
102.19-21	Laundry	38.61		50.
(continued)				

CITY OF GRAND JUNCTION, 1962 BUDGET

DEPARTMENT DETAIL

Account	Expenditure	Actual 1960	Estimate 1961	Budget 1962
FIRE DEPARTMENT #100 (continued)				
OPERATIONS Division #102 (continued)				
102.31	CAPITAL IMPROVEMENTS	\$ 4,875.00	\$ 2,987.	(\$53,867)A (\$71,691)B
102.31-A	Fire Station #2	4,875.00	1,200.	
	New Fire Station #1 Prelim Plans		1,787.	
102.31-B	2nd Accrual, Fire Sta			(\$53,867)A (\$71,691)B

CITY OF GRAND JUNCTION, 1962 BUDGET

DEPARTMENT SUMMARY

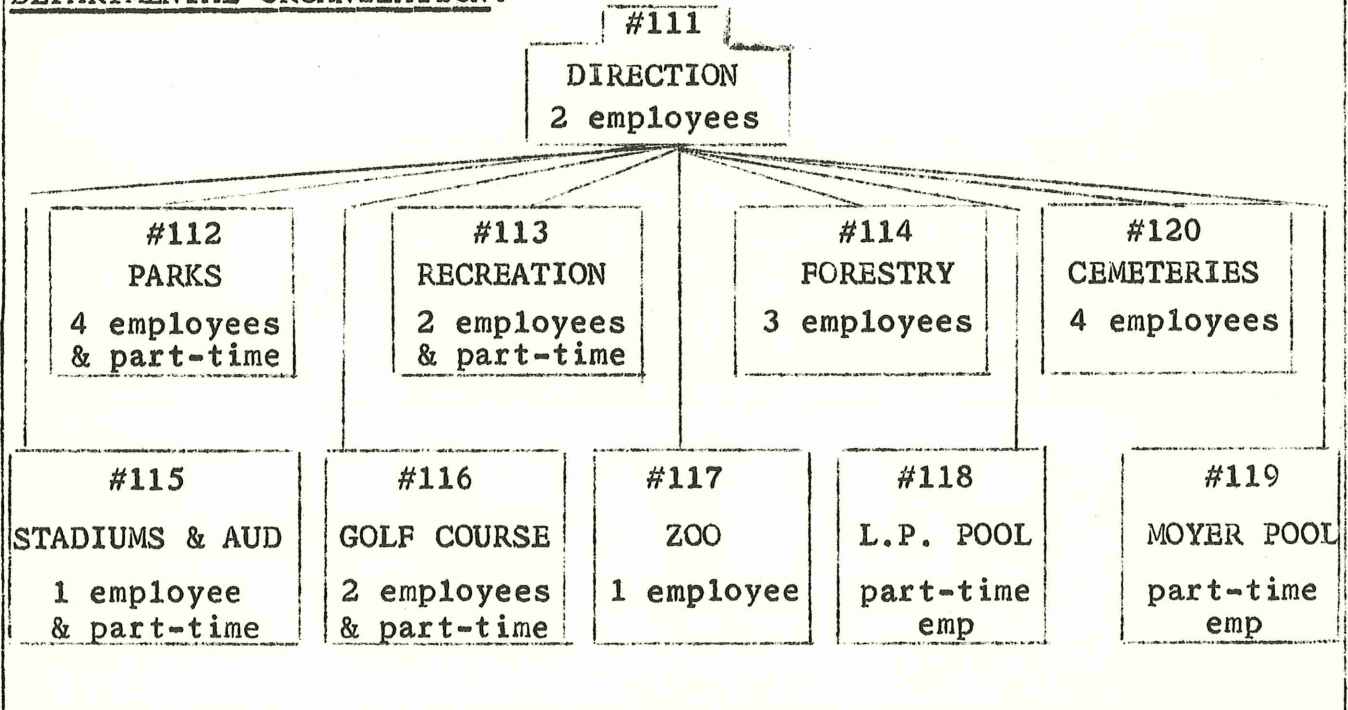
PARKS & RECREATION DEPARTMENT

PURPOSE & JUSTIFICATION: This program is designed to coordinate all City park and recreational facilities as to their construction, maintenance and use. In addition the Forestry function serves the purpose of maintaining trees in public parks and along public right-of-way throughout the City.

The largest amount of increase as shown below is due to the carry-over in the Park Improvement Fund and the anticipated revenues for this activity (See #121). Operation Foresight will affect only the Parks Division (#112) by altering the types of improvements planned. An additional fee of \$1.00 for each participant in the Learn-to-Swim program will be charged in 1962 to keep Moyer Pool self-supporting.

<u>COMPARATIVE RECAP:</u>	Actual 1960	Budget 1961	Budget 1962
<u>Supporting Funds:</u>	\$184,821.35	\$232,738.	\$251,587.
General Fund.....	134,316.27	161,031.	165,488.
Cemetery Fund.....	19,282.22	20,979.	22,708.
Lincoln Park Pool Fund...	20,828.65	20,575.	20,970.
Moyer Pool Fund.....	10,394.21	10,953.	11,166.
Park Improvement Fund....	none	19,200.	31,255.
<u>Expenditures:</u>	\$184,821.35	\$232,738.	\$251,587.
Personal Services.....	130,633.49	138,779.	147,500.
Operating Expenses.....	44,013.56	43,734.	46,288.
Capital Outlay.....	10,174.30	50,225.	57,799.

DEPARTMENTAL ORGANIZATION:



Pks
&
Rec
110

CITY OF GRAND JUNCTION, 1962 BUDGET

DEPARTMENT DETAIL

Account	Expenditure	Actual 1960	Estimate 1961	Budget 1962
PARKS & RECREATION DEPT #110		\$184,821.35	\$218,556.	\$251,587.
DIRECTION Division #111		9,363.30	13,784.	14,454.
Supported by General Fund....\$14,454. (Revenue Acct No. 100, Pg 12)				
111.01	SALARIES & WAGES FULL TIME	9,144.00	10,356.	10,872.
	1 Parks Director			6,888.
	1 Secretary			3,984.
111.03	SALARIES & WAGES OVERTIME			50.
111.04	SOCIAL SECURITY	219.30	242.	275.
111.05	WORKMEN'S COMP		30.	69.
111.06	INSUR PARTIC			144.
111.06-105	Health Ins			96.
111.06-106	Life Ins			48.
111.10	OFFICE SUPPLIES		310.	465.
111.10-1	Genl-Stores		157.	s. 300.
111.10-2	Genl-Non-Stores		153.	90.
111.10-3	Postage			75.
111.11	OFFICE EQUIP		160.	100.
111.12	OFFICE EQUIP MAINT		40.	60.
111.12-16	Maint Contr		20.	20.
111.12-19	Maint Serv		20.	40.
111.13	PRINTING			50.
111.13-12	Forms			
111.14	EQUIP-MOBILE		1,000.	1,000.
111.14-4	Equip Rental To Purchase: One Sedan w/trade\$1,800.			e.1,000.

(continued)

CITY OF GRAND JUNCTION, 1962 BUDGET

DEPARTMENT DETAIL

Account	Expenditure	Actual 1960	Estimate 1961	Budget 1962
PARKS & RECREATION DEPT #110 (continued)				
DIRECTION				
Division #111 (continued)				
111.17	UTILITIES		600.	710.
111.17-6	Telephone		300.	410.
111.17-7	Heat		175.	175.
111.17-8	Elec		125.	125.
111.18	FACILITY MAINT		35.	100.
111.18-13	Repairs & Replacements (Paint)		35.	100.
111.19	MISCELLANEOUS		40.	209.
111.19-2	Genl-Non-Stores			51.
111.19-5	Dues & Publicat'ns			48.
	Park & Rec Assoc	(\$24)		
	Park Maint	(\$15)		
	Am Nurseryman	(\$ 4)		
	Trees	(\$ 3)		
	Golfdom	(\$ 2)		
111.19-10	Conferences & Schools			100.
111.19-20	Fire Ins.			10.
111.30	SPECIAL PROJECTS			350.
111.30A	Air Conditioner for Park Office			350.

(continued)

CITY OF GRAND JUNCTION, 1962 BUDGET

DEPARTMENT DETAIL

Account	Expenditure	Actual 1960	Estimate 1961	Budget 1962
PARKS & RECREATION DEPT #110 (continued)				
PARKS Division #112		\$ 41,874.12	\$ 51,445.	\$ 53,961.
Supported by General Fund....\$53,961. (Revenue Acct No. 100, Pg 12)				
112.01	SALARIES & WAGES FULL TIME	29,788.44	17,028.	17,172.
	R			
	1 Foreman	8		4,752.
	1 Pk Mchnst	5		4,392.
	2 Pk Crewmen	4		8,028.
112.02	SALARIES & WAGES PART TIME		16,842.	18,920.
	1 Whitman Pk Caretaker			2,336.
	1 Emerson " "			2,528.
	1 Riverside " "			2,528.
	1 Hawthorne " "			2,560.
	1 Sherwood " "			2,376.
	1 Melrose " "			2,528.
	Gen'l gardening, etc.			1,504.
	Utility Man (8 months)			2,560.
112.03	SALARIES & WAGES OVERTIME		200.	300.
112.04	SOCIAL SECURITY	912.48	1,075.	1,120.
112.05	WORKMEN'S COMP	401.00	225.	341.
112.06	INSUR PARTIC			138.
112.06-105	Health Ins			84.
112.06-106	Life Ins.			54.
112.14	EQUIP-MOBILE	1,925.59	3,200.	3,260.
112.14-4	Equip Rental To Purchase: One Tractor w/trade\$1,200.	1,925.59	3,200.	e.3,260.
112.15	EQUIP, NON-MOBILE		1,500.	1,500.
112.15-13	Repair & Maint			600.
112.15-26	Small Items			500.
112.15-A	Power Mower			400.

(continued)

CITY OF GRAND JUNCTION, 1962 BUDGET

DEPARTMENT DETAIL

Account	Expenditure	Actual 1960	Estimate 1961	Budget 1962
PARKS & RECREATION DEPT #110 (continued)				
PARKS Division #112 (continued)				
112.16	MATERIAL & SUPPLIES	\$ 7,406.40	\$ 2,550.	\$ 2,550.
112.16-1	Genl-Stores			s. 150.
112.16-2	Genl-Non-Stores	7,406.40		500.
112.16-28	Fertilizer			400.
112.16-29	Nursery Stock, Seed, Plants			500.
112.16-74	Lawn Hose & Supplies			1,000.
112.17	UTILITIES	640.21	350.	350.
112.17-6	Telephone	116.50		
112.17-7	Heat			150.
112.17-8	Elec	523.71		200.
112.18	FACILITY MAINT		75.	150.
112.18-13	Repair & Replacement			150.
112.19	MISCELLANEOUS		600.	160.
112.19-2	Genl-Non-Stores			100.
112.19-20	Fire Ins.			60.
112.30	SPECIAL PROJECTS	800.00	7,800.	8,000.
112.30-A	Finish Rest Rooms, Emerson Park	800.00		(2,000)B
112.30-B	Light two Tennis Courts			
112.30-C	Finish Water System and Bldg, Sherwood Park			(4,000)B
112.30-D	Playground Equip			(2,000)B
112.30-E	Sherwood Park Drive (South end)			
112.30-F	Shopping Park Water System and Plants			(8,000)A
(continued)				

CITY OF GRAND JUNCTION, 1962 BUDGET

DEPARTMENT DETAIL

Account	Expenditure	Actual 1960	Estimate 1961	Budget 1962
PARKS & RECREATION DEPT #110 (continued)				
RECREATION Division #113		\$ 28,741.51	\$ 18,650.	\$ 28,613.
Supported by General Fund....\$28,613. (Revenue Acct No. 100, Pg 12)				
113.01	SALARIES & WAGES FULL TIME	15,247.86	8,572.	9,738.
				R
	1 Rec Director			14
	1 Rec Util'ty Man			3
	1 Rec Secretary			2
113.02	SALARIES & WAGES PART TIME		4,800.	11,284.
	Rec Supervisor			750.
	Learn-to-Swim			4,200.
	Rec Center Program			720.
	Jr. Rifle Club			432.
	Softball Program			1,296.
	Basketball Program			778.
	Volleyball Program			288.
	Jr. Tennis Program			600.
	Supervised Park Program			1,920.
	Ski Instruction			300.
113.04	SOCIAL SECURITY	490.86	418.	707.
113.05	WORKMEN'S COMP	13.00	80.	50.
113.06	INSUR PARTIC			114.
113.06-105	Health Ins			72.
113.06-106	Life Ins			42.
113.11	OFFICE EQUIP Desk	235.00		235.
113.12	OFFICE EQUIP MAINT	22.60		50.
113.13	PRINTING	15.00	130.	100.
113.14	EQUIP-MOBILE		400.	400.
113.14-4	Equip Rental			e. 400.

(continued)

CITY OF GRAND JUNCTION, 1962 BUDGET

DEPARTMENT DETAIL

Account	Expenditure	Actual 1960	Estimate 1961	Budget 1962
PARKS & RECREATION DEPT #110 (continued)				
RECREATION Division #113 (continued)				
113.16	MATERIAL & SUPPLIES	\$ 10,010.21	\$ 1,450.	\$ 3,100.
113.16-1	Genl-Stores			s. 150.
113.16-2	Genl-Non-Stores (forms)	1,197.11		250.
113.16-12	Learn-to-Swim Tags	148.43		200.
113.16-53	Athletic Equip			
	Rec Center Program			180.
	Softball Program			150.
	Basketball Program			100.
	Volleyball Program			40.
	Jr. Tennis Program			200.
	Supervised Park Prog.			430.
113.16-75	Food Stuffs for Resale	8,484.67		1,000.
113.16-76	Rifle ammunition	180.00		400.
113.17	UTILITIES	929.83	1,100.	956.
113.17-7	Heat) W. Side Recr Bldg.	929.83		350.
113.17-8	Elec)			606.
113.18	FACILITY MAINT		600.	462.
113.18-13	Repair & Replacement			
113.19	MISCELLANEOUS	1,777.15	600.	973.
113.19-2	Genl-Non-Stores	1,373.52		50.
113.19-5	Dues & Publications	25.00		25.
113.19-10	Conference Exp			-
113.19-18	Transportation	157.50		420.
113.19-20	Ins (Rifle Cl)	10.00		10.
113.19-20	Fire Ins.			138.
113.19-77	Sales Tax			30.
113.19-100	Space Rental			300.
113.30	SPECIAL PROJECTS		500.	444.
113.30-A	C.R.S. Spring Meeting			300.
113.30-B	Gate at West Side			144.

(continued)

CITY OF GRAND JUNCTION, 1962 BUDGET

DEPARTMENT DETAIL

Account	Expenditure	Actual 1960	Estimate 1961	Budget 1962
PARKS & RECREATION DEPT #110 (continued)				
FORESTRY Division #114		\$ 16,748.82	\$ 20,498.	\$ 22,331.
Supported by General Fund....\$22,331. (Revenue Acct No. 100, Pg 12)				
114.01	SALARIES & WAGES FULL TIME	13,666.40	13,032.	13,140.
		R		
	1 Forestry Foreman	7	4,692.	4,752.
	1 Tree Trimmer	5	4,344.	4,392.
	1 Forestry Crman	4	3,996.	3,996.
114.02	SALARIES & WAGES PART TIME		2,500.	2,844.
	1 Trimmer (9 mo)			2,844.
114.03	SALARIES & WAGES OVERTIME		125.	500.
114.04	SOCIAL SECURITY	410.36	430.	515.
114.05	WORKMEN'S COMP	143.00	85.	157.
114.06	INSUR PARTIC			144.
114.06-105	Health Ins			108.
114.06-106	Life Ins			36.
114.14	EQUIP-MOBILE	270.00	2,000.	2,550.
114.14-4	Equip Rent	270.00		e.2,550.
114.15	EQUIP, NON-MOBILE		145.	190.
114.15-26	Small Items			190.
114.16	MATERIAL & SUPPLIES	2,199.66	2,100.	2,175.
114.16-1	Genl-Stores	2,199.66	125.	s. 75.
114.16-2	Genl-Non-Stores		100.	200.
114.16-15	Chemicals (spray)		700.	700.
114.16-29	Nursery Stock		1,175.	1,200.
114.19	MISCELLANEOUS	59.40	81.	116.
114.19-2	Genl-Non-Stores		25.	60.
114.19-51	Water Assessments	59.40		
114.19-17	Fire Ins		56.	56.

(continued)

CITY OF GRAND JUNCTION, 1962 BUDGET

DEPARTMENT DETAIL

Account	Expenditure	Actual 1960	Estimate 1961	Budget 1962
PARKS & RECREATION DEPT #110 (continued)				
STADIUMS & PARK AUDITORIUM Division #115		\$ 9,113.04	\$ 20,938.	\$ 11,328.
Supported by General Fund....\$11,328. (Revenue Acct No. 100, Pg 12)				
115.01	SALARIES & WAGES FULL TIME	5,057.67	3,996.	4,032.
	1 Stadium Keeper $\frac{R}{4}$			4,032.
115.02	SALARIES & WAGES PART TIME		100.	200.
115.03	SALARIES & WAGES OVERTIME		800.	1,000.
115.04	SOCIAL SECURITY	138.46	160.	164.
115.05	WORKMEN'S COMP	82.00		50.
115.06	INSUR PARTIC			18.
115.06-105	Health Ins			
115.06-106	Life Ins			18.
115.14	EQUIP-MOBILE		300.	300.
115.14-4	Equip Rental			e. 300.
115.16	MATERIAL & SUPPLIES	606.96	600.	930.
115.16-1	Genl-Stores			s. 430.
115.16-2	Genl-Non-Stores	606.96		500.
115.17	UTILITIES	2,644.41	2,600.	2,700.
115.17-7	Heat			250.
115.17-8	Elec	2,644.41		2,450.
115.18	FACILITY MAINT		700.	1,030.
115.18-13	Repair & Replacement Paint for Fence & Seats			780. 250.
115.19	MISCELLANEOUS	5.00	800.	904.
115.19-2	Genl-Non-Stores		795.	50.
115.19-17	Boiler Insp	5.00	5.	5.
115.19-20	Fire Ins			849.
115.32	DEBT RETIRE	578.54	10,882.	--

(continued)

CITY OF GRAND JUNCTION, 1962 BUDGET

DEPARTMENT DETAIL

Account	Expenditure	Actual 1960	Estimate 1961	Budget 1962
PARKS & RECREATION DEPT #110 (continued)				
GOLF COURSE Division #116 (continued)				
116.17	UTILITIES	\$ 825.60	\$ 1,000.	\$ 1,170.
116.17-6	Telephone	16.75		120.
116.17-7	Heat			350.
116.17-8	Elec	808.85		700.
116.18	FACILITY MAINT		150.	275.
116.18-13	Repair & Replacement			275.
116.19-	MISCELLANEOUS		125.	106.
116.19-2	Gen1-Non-Stores			50.
116.19-20	Fire Ins			56.
116.30	SPECIAL PROJECTS		6,000.	8,000.
116.30-A	Extend Fencing			3,000.
116.30-B	Piping for Ditch			--
116.30-C	Rebuild Greens			5,000.

(continued)

CITY OF GRAND JUNCTION, 1962 BUDGET

DEPARTMENT DETAIL

Account	Expenditure	Actual 1960	Estimate 1961	Budget 1962
PARKS & RECREATION DEPT #110 (continued)				
ZOO Division #117		\$ 7,740.58	\$ 7,337.	\$ 8,127.
Supported by General Fund....\$8,127. (Revenue Acct No. 100, Pg 12)				
117.01	SALARIES & WAGES FULL TIME	5,290.22	3,996.	4,032.
	1 Zoo Keeper $\frac{R}{4}$		3,996.	4,032.
117.02	SALARIES & WAGES PART TIME			
117.03	SALARIES & WAGES OVERTIME		550.	750.
117.04	SOCIAL SECURITY	158.69	136.	158.
117.05	WORKMEN'S COMP	47.00	30.	46.
117.06	INSUR PARTIC			66.
117.06-105	Health Ins			48.
117.06-106	Life Ins			18.
117.16	MATERIAL & SUPPLIES	1,833.63	2,100.	2,200.
117.16-1	Genl-Stores			s. 100.
117.16-2	Genl-Non-Stores			100.
117.16-67	Animal Food	1,833.63		2,000.
117.17	UTILITIES	411.04	200.	200.
117.17-7	Heat			165.
117.17-8	Elec	411.04		35.
117.18	FACILITY MAINT		225.	225.
117.18-13	Repair & Replacement		225.	225.
117.19	MISCELLANEOUS		100.	100.
117.19-2	Genl-Non-Stores		100.	100.
117.30	SPECIAL PROJECTS			350.
117.30-1	Wiring for cages			250.
117.30-2	Painting cages			100.
117.31	CAPITAL IMPROVEMENTS			
117.31-A	1st accrual, Zoo Reloc			

(continued)

CITY OF GRAND JUNCTION, 1962 BUDGET

DEPARTMENT DETAIL

Account	Expenditure	Actual 1960	Estimate 1961	Budget 1962
PARKS & RECREATION DEPT #110 (continued)				
LINCOLN PARK POOL Division #118		\$ 20,828.65	\$ 20,208.	\$ 20,970.
Supported by L.P. Pool Fund....\$20,970. (Revenue Acct No. 900, Pg 18)				
118.01	SALARIES & WAGES FULL TIME	7,455.45	2,232.	2,268.
	1 Pool Oper ($\frac{1}{2}$ Sa1) $\frac{R}{6}$			2,268.
118.02	SALARIES & WAGES PART TIME		5,500.	5,509.
	4 Life Guards			2,667.
	2 Cashiers			1,333.
	2 Suit Rental Attend. Firemen			1,067. 442.
118.03	SALARIES & WAGES OVERTIME		50.	50.
118.04	SOCIAL SECURITY	223.67	241.	245.
118.05	WORKMEN'S COMP	72.75	85.	75.
118.06	INSUR PARTIC			33.
118.06-105	Health Ins			24.
118.06-106	Life Ins			9.
118.12	OFFICE EQUIP MAINT	35.00		35.
118.12-16	Maint Contr	35.00		35.
118.13	PRINTING		60.	65.
118.13-12	Forms (tickets)		60.	65.
118.15	EQUIP, NON-MOBILE		15.	225.
118.15-26	Small Items			225.
118.16	MATERIAL & SUPPLIES	2,340.60	2,300.	2,450.
118.16-1	Genl-Stores		50.	s. 100.
118.16-2	Genl-Non-Stores	1,169.55	700.	800.
118.16-15	Chemicals & Paints	981.03	1,050.	1,050.
118.16-30	Swim Suits & Towels	190.02	500.	500.

(continued)

CITY OF GRAND JUNCTION, 1962 BUDGET

DEPARTMENT DETAIL

Account	Expenditure	Actual 1960	Estimate 1961	Budget 1962
PARKS & RECREATION DEPT #110 (continued)				
LINCOLN PARK POOL Division #118 (continued)				
118.17	UTILITIES	\$ 1,241.39	\$ 1,500.	\$ 1,660.
118.17-6	Telephone	56.92		60.
118.17-7	Heat			600.
118.17-8	Elec	1,184.47		1,000.
118.18	FACILITY MAINT	921.90	800.	900.
118.18-13	Repair & Replacement (Inc painting)	921.90		600.
118.18-1	General (Gas Heat Units)			300.
118.19	MISCELLANEOUS	1,087.89	200.	355.
118.19-1	Genl-Stores			s. 50.
118.19-2	Genl-Non-Stores			50.
118.19-11	Oper Capital			
118.19-17	Boiler Insp			5.
118.19-20	Fire Ins	26.33		70.
118.19-21	Laundry	121.56		180.
	Cash Register	940.00		
118.32	DEBT RETIREMENT	7,450.00	7,225.	7,100.
118.32-25	Pool Const	7,450.00	7,225.	7,100.

(continued)

CITY OF GRAND JUNCTION, 1962 BUDGET

DEPARTMENT DETAIL

Account	Expenditure	Actual 1960	Estimate 1961	Budget 1962
PARKS & RECREATION DEPT #110 (continued)				
MOYER POOL Division 119		\$ 10,394.21	\$ 10,801.	\$ 11,166.
Supported by Moyer Pool Fund....\$11,166. (Revenue Acct No. 1000, Pg 18)				
119.01	SALARIES & WAGES FULL TIME	6,350.38	2,232.	2,268.
	1 Pool Oper ($\frac{1}{2}$ Sal)	$\frac{R}{6}$		2,268.
119.02	SALARIES & WAGES PART TIME		5,500.	5,509.
	3 Lifeguards			2,000.
	3 Cashiers			2,000.
	2 Suit Rental Attend Firemen			1,067. 442.
119.03	SALARIES & WAGES OVERTIME		50.	50.
119.04	SOCIAL SECURITY	191.00	241.	245.
119.05	WORKMEN'S COMP	72.00	85.	24.
119.06	INSUR PARTIC			33.
119.06-105	Health Ins			24.
119.06-106	Life Ins			9.
119.12	OFFICE EQUIP MAINT		35.	35.
119.12-16	Maint Contract (Cash Register)		35.	35.
119.13	PRINTING	45.40	28.	50.
119.13-12	Forms (tickets)	45.40	28.	50.
119.14	EQUIP-MOBILE	6.00	--	--
119.15	EQUIP, NON-MOBILE		178.	50.
119.15-26	Small Items			25.
119.15-74	Hose Vacuum		178.	25.

(continued)

CITY OF GRAND JUNCTION, 1962 BUDGET

DEPARTMENT DETAIL

Account	Expenditure	Actual 1960	Estimate 1961	Budget 1962
PARKS & RECREATION DEPT #110 (continued)				
MOYER POOL Division #119 (continued)				
119.16	MATERIAL & SUPPLIES	\$ 549.62	\$ 1,050.	\$ 1,050.
119.16-1	Genl-Stores			s. 50.
119.16-2	Genl-Non-Stores	176.44		375.
119.16-15	Chemicals	373.18		300.
119.16-30	Swim Suits & Towels			325.
119.17	UTILITIES	1,332.57	960.	960.
119.17-6	Telephone	53.91		60.
119.17-7	Heat			200.
119.17-8	Elec	1,278.66		700.
119.18	FACILITY MAINT	341.75	200.	325.
119.18-13	Repair & Replacement (inc painting)			325.
119.19	MISCELLANEOUS	159.73	242.	567.
119.19-2	Genl-Non-Stores			25.
119.19-11	Oper Capital			
119.19-17	Boiler Insp.	2.50		5.
119.19-20	Fire Ins	26.32		237.
119.19-21	Laundry	130.91		300.
119.31	CAPITAL OUTLAY	1,345.76		
119.31-A	Filter Mt1	1,345.76		
(continued)				

CITY OF GRAND JUNCTION, 1962 BUDGET

DEPARTMENT DETAIL

Account	Expenditure	Actual 1960	Estimate 1961	Budget 1962
PARKS & RECREATION DEPT #110 (continued)				
CEMETERIES				
Division #120		\$ 19,282.22	\$ 20,159.	\$ 22,708.
Supported by Cemetery Fund....\$22,708. (Revenue Acct No. 800, Pg 17)				
120.01	SALARIES & WAGES FULL TIME	17,167.68	16,680.	16,776.
	1 Cemetery Foreman	<u>R</u> 8	4,692.	4,752.
	3 Cemetery Crewmen	4	11,988.	12,024.
120.03	SALARIES & WAGES OVERTIME		1,000.	1,000.
120.04	SOCIAL SECURITY	515.05	550.	560.
120.05	WORKMEN'S COMP	185.00	83.	98.
120.06	INSUR PARTIC			174.
120.06-105	Health Ins			120.
120.06-106	Life Ins			54.
120.14	EQUIP-MOBILE		600.	600.
120.14-4	Equip Rent			e. 600.
120.15	EQUIP, NON-MOBILE		150.	350.
120.15-26	Small Items		150.	200.
120.15-26A	Trim Mower			150.
120.16	MATERIAL & SUPPLIES	1,414.49	600.	700.
120.16-2	Genl-Non-Stores	1,414.49		300.
120.16-29	Shrubs (Nursery Stock)			100.
120.16-35	Sand & Gravel (Concrete & Cement)			300.
120.19	MISCELLANEOUS			150.
120.19-2	Genl-Non-Stores			50.
120.19-11	Oper Capital			100.
(continued)				

CITY OF GRAND JUNCTION, 1962 BUDGET

DEPARTMENT DETAIL

Account	Expenditure	Actual 1960	Estimate 1961	Budget 1962
PARKS & RECREATION DEPT #110 (continued)				
CEMETERIES				
Division #120 (continued)				
120.30	SPECIAL PROJECTS	\$ --	\$ 346.	\$ 300.
120.30	Water Line Ext in Blk "E" O.M.C.			300.
120.31	CAPITAL IMPROVEMENTS			2,000.
	Future Expansion			2,000.
(continued)				

CITY OF GRAND JUNCTION, 1962 BUDGET

DEPARTMENT DETAIL

Account	Expenditure	Actual 1960	Estimate 1961	Budget 1962
PARKS & RECREATION DEPT #110 (continued)				
PARK IMPROVEMENT Division #121		\$ None	\$ 7,200.	\$ 31,255.
Supported by Park Improvement Fund...\$31,255. (Revenue Acct No. 1100, Pg 19)				
121.31	CAPITAL IMPROVEMENTS		7,200.	31,255.
	PIAB-Sponsored Projects			31,255.

CITY OF GRAND JUNCTION, 1962 BUDGET

DEPARTMENT SUMMARY

LIBRARY DEPARTMENT

PURPOSE & JUSTIFICATION: The providing of cultural and educational library facilities for the citizens of Greater Grand Junction is the primary function of this program. To this end numerous special activities are provided by the library program including activities for people of all ages and reading desires.

The increase in this program is due primarily to the normal increase in activity as patronage grows with the community. The increase is not as great as requested by the Library staff, but is in keeping with other tax-supported departments of the City. The reorganization of the Library Board in late 1961 should result in a thorough analysis of the City's Library program. It is to be expected that the new Board will then be in a position to recommend a more comprehensive spending program for this function including expanded quarters if necessary.

<u>COMPARATIVE RECAP:</u>	Actual 1960	Budget 1961	Budget 1962
<u>Supporting Funds:</u>	\$ 38,158.59	\$42,652.	\$45,854.
Library Fund.....	38,158.59	42,652.	45,854.
<u>Expenditures:</u>	\$ 38,158.59	42,652.	45,854.
Personal Services.....	26,947.56	27,643.	28,309.
Operating Expenses.....	10,818.43	14,579.	16,923.
Capital Outlay.....	392.60	430.	622.

DEPARTMENTAL ORGANIZATION:

#131
DIRECTION
and
OPERATION

4 employees plus
part-time help

CITY OF GRAND JUNCTION, 1962 BUDGET

DEPARTMENT DETAIL

Account	Expenditure	Actual 1960	Estimate 1961	Budget 1962
LIBRARY DEPARTMENT #130		\$ 38,158.59	\$ 41,752.	\$ 45,854.
DIRECTION & OPERATIONS Division #131		38,158.59	41,752.	45,854.
Supported by Library Fund...\$45,854. (Revenue Acct No. 700, Pg 17)				
131.01	SALARIES & WAGES FULL TIME	26,097.91	16,566.	\$ 17,436.
	R			
	1 Head Librarian	12		5,172.
	1 Librarian #2	7		4,284.
	1 Librarian #3	6		4,140.
	1 Librarian #5	4		3,840.
131.02	SALARIES & WAGES PART TIME		10,073.	9,896.
	2 Librarians (1/2 time)			2,196.
	Professional Assistant			1,000.
	Typist			2,000.
	Clerks & Pages			3,500.
	Custodian			1,200.
131.04	SOCIAL SECURITY	837.65	814.	820.
131.05	WORKMEN'S COMP	12.00	15.	19.
131.06	INSUR PARTIC			138.
131.06-105	Health Ins			60.
131.06-106	Life Ins			78.
131.10	OFFICE SUPPLIES	200.00	2,664.	2,506.
131.10-1	Genl-Stores	200.00		s. 500.
131.10-2	Genl-Non-Stores			1,800.
131.10-3	Postage			206.
131.11	OFFICE EQUIP	388.26	1,868.	1,961.
131.11-A	Machine Rental			100.
131.11-B	Steel Shelving			570.
131.11-C	Wood Shelving			300.
131.11-D	3 Verticle Files			270.
131.11-E	4 Storage Cabinets			296.
131.11-F	Catalogue legal file			310.
131.11-G	Wood charging tray			75.
131.11-H	Electric Clock			40.
131.11-I	Staff Lockers			

(continued)

CITY OF GRAND JUNCTION, 1962 BUDGET

DEPARTMENT DETAIL

Account	Expenditure	Actual 1960	Estimate 1961	Budget 1962
LIBRARY DEPARTMENT #130 (continued)				
DIRECTION & OPERATIONS Division #131 (continued)				
131.16	MATERIAL & SUPPLIES	\$ 6,454.95	\$ 5,423.	\$ 7,952.
131.16-1	Genl-Stores			s. 30.
131.16-2	Genl-Non-Stores	2,434.10		170.
131.16-80	Books	4,020.85		6,352.
131.16-81	Periodicals			600.
131.16-82	Records			500.
131.16-83	Pamphlets			100.
131.16-84	Documents			200.
131.17-	UTILITIES	1,817.78	2,017.	2,000.
131.17-6	Telephone	421.17		450.
131.17-7	Heat			750.
131.17-8	Elec	1,375.61		800.
131.17-79	Clock Serv (Western Union)	21.00		
131.18	FACILITY MAINT		757.	300.
131.18-13	Repair & Replacement			300.
131.19	MISCELLANEOUS	1,957.44	1,495.	2,204.
131.19-2	Genl-Non-Stores	845.02		100.
131.19-5	Dues & Publications			60.
131.19-10	Conference Expense (Dist & State Workshops, ALA)			100.
131.19-11	Operating Capital			1,000.
131.19-18	Transportation			50.
131.19-20	Fire Ins.	583.00		644.
131.19-53	Business Trips			-0-
131.19-78	Bibliographical Center	529.42		250.
131.30	SPECIAL PROJECTS	392.60	60.	622.
131.30-A	Fluorescent Lights			622.
131.30-B	Map Collection			
131.30-C	Picture file			

CITY OF GRAND JUNCTION, 1962 BUDGET

DEPARTMENT SUMMARY

GENERAL GOVERNMENT DEPARTMENT

PURPOSE & JUSTIFICATION: This program includes those expenses of City government which cannot logically fall under any of the other functions which are programmed in the budget. Most items are self-explanatory as to purpose.

The biggest single factor accounting for the drop in this program is the budgeting of less money for "Operating Capital" and "Miscellaneous, General". Other changes include the appropriation of \$2,500. for the County Civil Defense program and the addition of \$4,200. for General Liability insurance. The Land Transactions Division budget is determined entirely by the amount of money anticipated to be on hand at the close of the year.

<u>COMPARATIVE RECAP:</u>	Actual 1960	Budget 1961	Budget 1962
<u>Supporting Funds:</u>	\$ 34,276.65	\$81,860.	\$71,448.
General Fund.....	32,136.23	67,860.	57,938.
Land Fund.....	2,140.42	14,000.	13,510.
<u>Expenditures:</u>	\$ 34,276.65	\$81,860.	\$71,448.
Personal Services.....	none	none	none
Operating Expenses.....	32,136.23	59,010.	57,938.
Capital Outlay.....	2,140.42	22,850.	13,510.

DEPARTMENTAL ORGANIZATION:

None

CITY OF GRAND JUNCTION, 1962 BUDGET

DEPARTMENT DETAIL

Account	Expenditure	Actual 1960	Estimate 1961	Budget 1962
GENERAL GOVERNMENT DEPT #140		\$ 34,276.65	\$ 44,185.	\$ 71,448.
GENERAL FUND Division #141		32,136.23	35,585.	57,938.
Supported by General Fund....\$57,938. (Revenue Acct No. 100, Pg 12)				
141.13	PRINTING	1,113.54	1,975.	1,990.
141.13-101	Annual Report Adv (1960)	1,113.54		
141.19	MISCELLANEOUS	31,022.69	31,744.	55,948.
141.19-2	Genl-Non-Stores	2,459.14	4,225.	3,000.
141.19-5	Dues & Publications		949.	949.
	Colo. Mun Lg (\$850)	402.24		
	Am Mun Assoc (\$ 75)			
	Am City Mag (\$ 24)	24.00		
141.19-11	Operating Capital			20,000.
141.19-20	Fire Ins.	3,099.47	275.	275.
	General Liability		1,385.	4,200.
	Blanket Bond	375.03	100.	100.
141.19-52	Spec Assessment	7,430.06	7,275.	7,275.
141.19-68	Annual Audit	2,800.00	2,950.	2,949.
141.19-85	Civic Participation	234.50	435.	550.
	Member, Chamber (\$198)	198.00		
	Meetings, Chmbr (\$302)			
	City-County Day (\$ 50)	36.50		
141.19-86	Liquor Tax	6,463.75	6,650.	6,650.
141.19-87	Health Dept Support	7,500.00	7,500.	7,500.
141.19-109	Civil Defense Support			2,500.
141.30	SPECIAL PROJECTS		1,866.	-0-
141.30-A	Election			

(continued)

CITY OF GRAND JUNCTION, 1962 BUDGET

DEPARTMENT DETAIL

Account	Expenditure	Actual 1960	Estimate 1961	Budget 1962
GENERAL GOVERNMENT DEPT #140 (continued)				
LAND TRANSACTIONS Division #142		\$ 2,140.42	\$ 8,600.	\$ 13,510.
Supported by Land Fund....\$13,510. (Revenue Acct No. 1200, Pg 19)				
142.30	SPECIAL PROJECTS	2,140.42	8,600.	13,510.
142.30-A	Land Acq	2,140.42	8,600.	13,510.

CITY OF GRAND JUNCTION, 1962 BUDGET

PART IV

SUPPORTING DATA

CITY OF GRAND JUNCTION, 1962 BUDGET

SUPPORTING DATA

WORK PROGRAMS -- PUBLIC WORKS DEPARTMENT

The following work programs indicate the scope and nature of work to be performed by the Public Works Department apart from functions of that department which are otherwise laid out such as Administration, Sanitation, Equipment Shops and the Airport. The amounts shown include all labor, operating expenses and equipment rentals necessary to perform the work as planned.

1. Curb & Gutter Repair and Replacement.....\$9,600.(A), \$16,656.(B)

With the (A) Program we would plan only to do curb and gutter repair and replacement of the emergency nature and would not follow our repair program which we set up in 1960 and went into effect with our 1961 budget. The area that was scheduled for repair in 1962 under this program would then be deferred until 1963. Under the (B) Program, we would again plan to do work of the emergency nature and get into the area that was scheduled for 1962 but would be unable to finish it all. This work is necessary to provide good drainage on our streets before rebuilding or sealcoating.

(Labor: \$ 6,500. (A); Equip: \$ 3,100. (A);
11,000. (B); 5,156. (B).

2. Street Sealcoating.....\$6,000.(A), \$10,000.(B)

This is a part of a preventative maintenance program. When we have the curb and gutters repaired so streets have proper drainage and we can keep our streets sealed, cost of patching will drop to a small fraction of present costs. Cost of this program includes patching the street before sealing. These streets could all be sealed with the (B) Program. With the (A) Program, Grand Avenue would have to be eliminated:

- Main Street, 7th to 14th
- Orchard Avenue, 1st to 12th
- Second Street from North Avenue to Grand Avenue
- Grand Avenue from 2nd to 15th Street

(Labor: \$ 3,000. (A); Equip: \$ 3,000. (A);
5,000. (B); 5,000. (B).

3. Maintenance of Paved Streets and Alleys..\$36,000.(A), \$38,000.(B)

The only difference between the (A) and (B) Programs is \$2,000. in the (B) Program due to more curb and gutter to be done as shown in No. 1 above, causing a need for more paving replacement next to the increased curb and gutter.

(Labor: \$20,000. (A); Equip: \$16,000. (A);
22,000. (B); 16,000. (B).

CITY OF GRAND JUNCTION, 1962 BUDGET

SUPPORTING DATA

WORK PROGRAMS -- PUBLIC WORKS DEPARTMENT (continued)

4. Maintenance of Unpaved Streets and Alleys.....\$20,000.

This program consists of grading, sprinkling and placing gravel into holes on unpaved streets and alleys.

(Labor: \$10,000. (A); Equip: \$10,000. (A);
10,000. (B); 10,000. (B).)

5. Maintenance of State Highways.....\$ 3,300.

Each year we enter into a contract with the State for maintenance of some State Highway mileage within the City. This program has been split in the budget.

Streets and drainage, Division #72.....\$2,475.
Traffic and bldg maint, Division #73... 825.

(Labor: \$ 2,300. (A); Equip: \$ 1,000. (A);
2,300. (B); 1,000. (B).)

6. Street Flushing & Sweeping.....\$26,000.

The general cleaning of all improved streets is programmed here. Regular sweeping and flushing schedules are followed throughout the year as weather permits.

(Labor: \$11,500. (A); Equip: \$14,500. (A);
11,500. (B); 14,500. (B).)

7. Leaf Removal and Snow Removal.....\$10,000.

This program includes the removal of leaves in the fall, snow in the winter and spreading salt or other deicing procedures.

(Labor: \$ 5,500. (A); Equip: \$ 4,500. (A);
5,500. (B); 4,500. (B).)

8. Miscellaneous Work.....\$40,000.

This program includes everything done by the streets and drainage department not included in any other programs or special project. Examples are: Work that may be caused by floods, plugged irrigation pipes or other unforeseen work; cleaning catch basins; and many other small projects that are too small to be programmed separately.

(Labor: \$20,000. (A); Equip: \$20,000. (A);
20,000. (B); 20,000. (B).)

9. Operation Foresight.....\$37,000.(A)

This is work to be performed budgeted other than in Special Projects or Capital Improvement section of the (A) Program.

(Labor: \$20,000. (A); Equip: \$17,000. (A).)

CITY OF GRAND JUNCTION, 1962 BUDGET

SUPPORTING DATA

WORK PROGRAMS -- UTILITIES DEPARTMENT

The following work programs indicate the scope and nature of work to be performed by the Utilities Department apart from functions of that department which are otherwise laid out such as Administration and Billing, and Water and Sewer Plants. The amounts shown include all labor, operating expenses and equipment rentals necessary to perform the work as planned.

1. Repair of Water Main Breaks.....\$22,000.

Repair of water main breaks and leaks, fire hydrant repairs and replacements, valve repairs and replacements. Street damage caused by water line breaks, service installation, etc. is repaired by the Street Division. Approximately 80% of overtime budgeted under Division #82 is used in this program. Expenditures under this program vary from year to year, but over the period since 1950 a gradual increase has occurred due to increase in mileage of mains and aging of all mains.

(Labor: \$14,000.; Material, equipment, etc.: \$8,000.)

2. Service Line Connections and Maintenance.....\$14,000.

Installation of new service connections and maintenance and replacement of existing service lines.

(Labor: \$ 5,000.; Material, equipment, etc.: \$9,000.)

3. Water Meter Repair & Installation.....\$19,000.

Water meter repair, testing and installation. Includes meter parts, new meters, yokes, boxes and covers.

(Labor: \$ 9,000.; Material: \$10,000.)

4. Water Line Extensions.....\$ 9,000.

Extension of water lines to provide service for new water customers. Small extensions only are carried in this program with work to be done by City forces. Some small extensions will be needed in Fruitvale during 1962. Larger extensions carried in Special Projects and Capital Improvements accounts.

(Labor: \$ 2,000.; Material, equipment, etc.: \$7,000.)

5. Sewer Connections and Maintenance.....\$16,000.

Cleaning, flushing, repairs and all maintenance of sanitary sewer collector lines and manholes. New sewer taps also included in this item.

(Labor: \$11,000.; Material, equipment, etc.: \$5,000.)

CITY OF GRAND JUNCTION, 1962 BUDGET

SUPPORTING DATA

WORK PROGRAMS -- UTILITIES DEPARTMENT (continued)

6. Water Intake Operation.....\$12,000.

All activities concerned with taking water from Kannah Creek into City flowlines and the intake at Hallenbeck reservoir, including operation and maintenance of chlorine feeders and building and facility maintenance at points of intake. Operation of the new micro-strainer plant as well as control of reservoir filling during spring runoff is also included.

(Labor: \$6,000.; Material: \$6,000.)

7. Flowline Maintenance.....\$ 1,000.

Flowline patrol, repairs and betterments and some drainage crossings, including maintenance of airvalves, control boxes, and all other work on flowline from supply to Filter plant.

(Labor: \$ 500.; Material: \$ 500.)

8. Reservoir Maintenance & Operation.....\$ 3,000.

Filling of reservoirs on Grand Mesa, running of water during summer months, treating of stored water for algae control and minor improvements to measuring and control devices. Will include gravel surface road to Hallenbeck reservoir and clearing brush from high water line of Hallenbeck site.

(Labor: \$1,500.; Material, equipment, etc.: \$1,500.)

CITY OF GRAND JUNCTION, 1962 BUDGET

SUPPORTING DATA

	Principal	Interest	Total
TOTAL OUTSTANDING GEN OBLIGATION BONDS	\$578,000.00	\$ 95,237.50	\$673,237.50

General Obligation Paving Bonds

Total of \$40,000.00 : For purpose of paying street inter-
 Issued June 1, 1953 for 10 years : section costs in Spec Paving Dists

	Principal	Interest	Total
OUTSTANDING	\$ 10,000.00	\$ 287.50	\$ 10,287.50
1962	5,000.00	215.60	5,215.60
1963	5,000.00	71.90	5,071.90

Sewer Improvement Bonds

Total of \$460,000.00 : For purpose of construction of
 Issued March 1, 1957 for 15 years : South side disposal plant and re-
 modeling of West side plant.

	Principal	Interest	Total
OUTSTANDING	\$373,000.00	\$ 62,475.00	\$435,475.00
1962	29,000.00	10,755.00	39,755.00
1963	30,000.00	9,870.00	39,870.00
1964	34,000.00	8,910.00	42,910.00
1965	35,000.00	7,875.00	42,875.00
1966	36,000.00	6,810.00	42,810.00
1967	37,000.00	5,715.00	42,715.00
1968	38,000.00	4,590.00	42,590.00
1969	34,000.00	3,510.00	37,510.00
1970	34,000.00	2,490.00	36,490.00
1971	34,000.00	1,470.00	35,470.00
1972	32,000.00	480.00	32,480.00

Police Administration Bldg Bonds

Total of \$240,000.00 : For purpose of construction of
 Issued March 1957 for 15 years : a new Police Station.

	Principal	Interest	Total
OUTSTANDING	\$195,000.00	\$ 32,475.00	\$227,475.00
1962	16,000.00	5,610.00	21,610.00
1963	16,000.00	5,130.00	21,130.00
1964	18,000.00	4,620.00	22,620.00
1965	18,000.00	4,080.00	22,080.00
1966	19,000.00	3,525.00	22,525.00
1967	19,000.00	2,955.00	21,955.00
1968	20,000.00	2,370.00	22,370.00
1969	17,000.00	1,815.00	18,815.00
1970	17,000.00	1,305.00	18,305.00
1971	17,000.00	795.00	17,795.00
1972	18,000.00	270.00	18,270.00

CITY OF GRAND JUNCTION, 1962 BUDGET

SUPPORTING DATA

	Principal	Interest	Total
TOTAL OUTSTANDING WATER BONDS	\$1,515,000.00	\$165,325.00	\$1,680,325.00
<u>Total Water Bonds Per Year</u>			
Total of two issues shown below:			
	Principal	Interest	Total
OUTSTANDING	\$1,515,000.00	\$165,325.00	\$1,680,325.00
1962	110,000.00	33,775.00	143,775.00
1963	170,000.00	31,175.00	201,175.00
1964	185,000.00	27,375.00	212,375.00
1965	195,000.00	23,275.00	218,275.00
1966	205,000.00	18,900.00	223,900.00
1967	205,000.00	14,625.00	219,625.00
1968	205,000.00	10,012.50	215,012.50
1969	205,000.00	5,400.00	210,400.00
1970	35,000.00	787.50	35,787.50

Water Bonds Series 1955 : For the purpose of constructing a
 Total of \$1,500,000.00 : new flowline and other water
 Issued April 1, 1955 for 15 yrs : system expansion.

	Principal	Interest	Total
OUTSTANDING	\$1,310,000.00	\$149,650.00	\$1,459,650.00
1962	70,000.00	28,225.00	98,225.00
1963	130,000.00	26,825.00	156,825.00
1964	145,000.00	24,225.00	169,225.00
1965	155,000.00	21,325.00	176,325.00
1966	160,000.00	18,225.00	178,225.00
1967	205,000.00	14,625.00	219,625.00
1968	205,000.00	10,012.50	215,012.50
1969	205,000.00	5,400.00	210,400.00
1970	35,000.00	787.50	35,787.50

Water Revenue Bonds Series 1948
 Total of \$395,000.00 : For the purpose of metering all
 Issued Jan. 1, 1948 for 18 yrs : City water users

	Principal	Interest	Total
OUTSTANDING	\$ 205,000.00	\$ 15,675.00	\$ 220,675.00
1962	40,000.00	5,550.00	45,550.00
1963	40,000.00	4,350.00	44,350.00
1964	40,000.00	3,150.00	43,150.00
1965	40,000.00	1,950.00	41,950.00
1966	45,000.00	675.00	45,675.00

CITY OF GRAND JUNCTION, 1962 BUDGET

SUPPORTING DATA

	Principal	Interest	Total
TOTAL OUTSTANDING LINCOLN PARK POOL REVENUE BONDS	\$ 55,000.00	\$16,350.00	\$71,350.00

Lincoln Park Pool Revenue Bonds

Total of \$80,000.00 : For the purpose of constructing
 Issued April 1, 1956 for 15 hrs : a new swimming pool

	Principal	Interest	Total
OUTSTANDING	\$ 55,000.00	\$16,350.00	\$71,350.00
1962	5,000.00	2,100.00	7,100.00
1963	5,000.00	1,925.00	6,925.00
1964	5,000.00	1,750.00	6,750.00
1965	5,000.00	1,575.00	6,575.00
1966	5,000.00	1,400.00	6,400.00
1967	6,000.00	1,200.00	7,200.00
1968	6,000.00	1,960.00	7,960.00
1969	6,000.00	1,720.00	7,720.00
1970	6,000.00	1,480.00	7,480.00
1971	6,000.00	1,240.00	7,240.00

CITY OF GRAND JUNCTION, 1962 BUDGET

SUPPORTING DATA

PROPERTY TAX MILL LEVIES,
AFFECTING GRAND JUNCTION CITY TAX PAYERS, 1941-1961*

<u>Year*</u>	<u>City</u>	<u>Co.</u>	<u>Pub # School</u>	<u>School Dst 51</u>	<u>Mesa Clge</u>	<u>Colo State</u>	<u>GJ Drn Dist</u>	<u>C.Riv Cns Dst</u>	<u>Total</u>
1941	15.50	10.33	3.44	22.40	1.25	4.25	1.50	.20	\$58.87
1942	15.50	10.49	2.98	22.40	1.25	4.00	1.50	.15	58.27
1943	15.50	10.76	2.58	22.40	1.25	3.85	1.50	.15	57.99
1944	16.00	11.28	2.25	24.40	1.25	3.64	1.50	.15	60.47
1945	16.40	11.47	2.18	25.05	2.25	3.50	1.50	.15	62.50
1946	21.40	13.10	1.93	25.05	2.25	3.42	2.00	.15	69.30
1947	25.50	17.47	2.22	26.61	3.99	4.53	2.50	.15	82.97
1948	25.50	16.28	3.41	25.50	4.49	4.00	2.50	.15	81.83
1949	25.50	15.98	3.57	28.00	4.45	3.86	2.50	.15	84.01
1950	25.50	16.32	3.63	30.87	4.89	3.90	3.00	.20	88.31
1951	25.50	16.99	4.03	30.90	4.68	3.86	3.00	.20	89.16
1952	19.00	10.38	3.99	20.31	3.67	2.71	1.96	.14	62.16
1953	18.50	9.42	4.25	28.01	3.78	2.71	2.03	.15	68.85
1954	17.50	8.18	4.25	31.16	3.78	2.70	2.07	.16	69.80
1955	17.50	7.51	4.50	28.54	3.65	3.63	3.00	.15	68.48
1956	20.00	9.07	4.50	35.23	4.10	3.57	2.86	.20	79.53
1957	17.40	10.46	12.00	24.01	4.07	3.56	2.74	.20	74.44
1958	17.40	9.59	12.00	25.99	4.07	3.56	2.53	.20	75.34
1959	17.60	9.57	12.00	27.99	4.04	2.40	2.57	.20	76.37
1960	17.50	9.42	12.00	26.77	4.04	2.20	2.55	.22	74.70
1961	17.50	9.71	12.00	26.77	5.04	1.45	2.55	.23	75.25

*YEAR = Year of levy for taxes to be paid the following year.
 #Collected by the County and distributed to School Districts in Mesa County. This levy is required by State law in order for School Districts to receive State Aid.
 SOURCE: Mesa County Assessor.

CITY OF GRAND JUNCTION, 1962 BUDGET

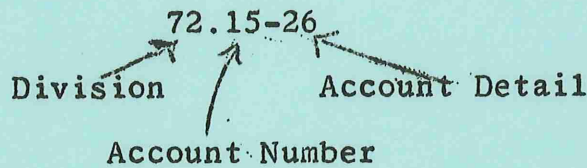
SUPPORTING DATA

BUDGET ACCOUNT EXPLANATION

The following three sections explain the budgeting system used by the City. The information contained herein should explain what types of items are included in any given account in order to clarify the proposed expenditure in detail.

BUDGET ACCOUNTS

This section lists in detail the budget accounts as they are to be used in the 1962 budget:



1. DEPARTMENTS

<u>Number</u>	<u>Divisions</u>
10.....	LEGISLATION & COUNSEL
11.....	City Council
12.....	City Attorney
13.....	Planning & Zoning Commission
14.....	Other Boards
20.....	JUDICIARY
21.....	Municipal Court
30.....	MANAGEMENT
31.....	Manager's Office
40.....	RECORDS
41.....	Administration & Personnel
50.....	FINANCE
51.....	Administration & Finance
52.....	Purchasing & Property
53.....	Court Clerks
54.....	Stores Inventory
60.....	DEVELOPMENT
61.....	Administration & Planning
62.....	Inspection

CITY OF GRAND JUNCTION, 1962 BUDGET

SUPPORTING DATA

DEPARTMENTS (continued)

<u>Number</u>	<u>Divisions</u>
70.....	PUBLIC WORKS
71.....	Engineering
72.....	Streets & Drainage
73.....	Traffic Operations & Building maintenance
74.....	Equipment Shops
75.....	Sanitation
76.....	Airport
80.....	UTILITIES
81.....	Direction & Billing
82.....	Utilities System.
83.....	Water Supply
84.....	Water Plant
85.....	Sewer Plants
90.....	POLICE
91.....	Direction
92.....	Operations
100.....	FIRE
101.....	Direction
102.....	Operations
110.....	PARKS & RECREATION
111.....	Direction
112.....	Parks
113.....	Recreation
114.....	Forestry
115.....	Stadiums & Park Auditorium
116.....	Golf Course
117.....	Zoo
118.....	Lincoln Park Pool
119.....	Moyer Pool
120.....	Cemeteries
121.....	Park Improvement Projects
130.....	LIBRARY
131.....	Direction & Operation
140.....	GENERAL GOVERNMENT
141.....	General Government
142.....	Land Transactions

CITY OF GRAND JUNCTION, 1962 BUDGET

SUPPORTING DATA

2. Account Numbers:

PERSONAL SERVICES

<u>Account</u>	<u>Expenditure</u>	<u>Explanation</u>
.01	SALARIES & WAGES--FULL TIME....	Only pay for full-time personnel appears here. The number, title, and job range are shown.
.02	SALARIES & WAGES--PART TIME....	Part time or seasonal help are paid from this account only.
.03	SALARIES & WAGES--OVERTIME....	All overtime, whether to full-time or part-time employees comes under this account.
.04	SOCIAL SECURITY.....	This represents the City's portion of the amount required. It is 3-1/8% of the first \$4,800. of each employee's salary.
.05	WORKMEN'S COMPENSATION.....	City contribution paid on the first \$3,000. of salary for all employees as required by state law.
.06	INSURANCE PARTICIPATION.....	City share of optional health and accident plan (City pay 25%) and/or optional group life plan (City pays half).

OPERATING EXPENSES

.10	OFFICE SUPPLIES.....	Such items as paper, pencils, reference items, books, typewriter ribbons, staplers, postage, and other office items appear in this account. List of items handled through Stores available from Purchasing Agent. Note that office equipment is <u>NOT</u> included here.
.10-1	General - Stores	
.10-2	General - Non-stores	
.10-3	Postage	
.10-?	(Other Headings as shown in Section 3 below)	
.11	OFFICE EQUIPMENT.....	Net cost of new or second-hand office machines, furniture and accessories are charged here. Items should be detailed in subs .11-A, .11-B, etc.

Account Numbers (Continued)

OPERATING EXPENSES (Continued)

<u>Account</u>	<u>Expenditure</u>	<u>Explanation</u>
.12	OFFICE EQUIPMENT MAINTENANCE.	Maintenance contracts and repairs to type of items in .11 above.
.13	PRINTING.....	Includes forms for departmental office use, circulars for distribution, and other items of printing used for normal administration. Legal and display advertising which is generated by a specific function is charged to this account, such as Planning Commission hearings, ads for bids by Public Works & Utilities Dept., and Council ordinances and hearings.
.13-12	Forms	
.13-14	Advertising	
.14	EQUIPMENT, MOBILE.....	Equipment financed and maintained in the Equipment function (all mobile equipment) is supported by the Equipment Fund which in turn is derived from equipment rentals charged monthly to this account.
.14-4	Equipment Rental (Items listed for purchase each year are illustrative only. Actual purchases are charged to <u>equipment sub-program only.</u>)	
.15	EQUIPMENT, NON-MOBILE.....	Items of non-mobile equipment used in various City functions. No items carried in the Equipment Fund appear here.
.15-26	Small Items - General (Each larger item should be detailed in subs .26-A, .26-B, etc.)	
.16	MATERIALS & SUPPLIES.....	Applies to basic items to be used by City personnel in normal maintenance and operational programs.
.16-1	General - Stores	Examples are: sand and gravel, asphalt, road oil, lumber, grass seed, fertilizer, building paint, etc. List of Stores items available from Purchasing Agent.
.16-2	General - Non-stores	
.16-?	(Other Headings as shown in Section 3 which follows)	

Account Numbers (Continued)

OPERATING EXPENSES (Continued)

<u>Account</u>	<u>Expenditures</u>	<u>Explanation</u>
.17	UTILITIES.....	Use by all City functions of utilities for various purposes appear here.
.17-6	Telephone	
.17-7	Heating	
.17-8	Electricity	
.17-9	Water & Sewer	
.18	FACILITY MAINTENANCE.....	Includes janitor supplies, routine building repairs and partial replacements, painting, redecorating, glass, furnace repairs, etc for all departmental building structures. <i>etc.</i>
.19	MISCELLANEOUS.....	Items under this heading are those departmental expenditures which cannot logically fit under any other heading. Generally, their total should be quite small.
.19-2	General-Non-stores	<u>Fire insurance</u> is that part the City blanket policy premium covering facilities in specific Departments.
.19-5	Dues & Publications	<u>Dues & Publications</u> heading is for Professional Organizations and periodicals authorized by the City Manager and requiring annual renewal.
.19-10	Conference Expense	<u>Conference expense</u> includes schools and must be itemized as to organization and total cost, including travel.
.19-17	Fire Insurance	<u>Transportation</u> includes payments for privately-owned vehicles on City business as authorized by the City Manager.
.19-18	Transportation	<u>Business Trips</u> are those other than conferences. They are normally required by unforeseen occurrences. Examples of causes are Mun. League committees, contract negotiations, etc.
.19-53	Business Trips	

Account Numbers (continued)

CAPITAL OUTLAY

<u>Account</u>	<u>Expenditures</u>	<u>Explanation</u>
.30	SPECIAL PROJECTS.....	Substantial jobs of an unusual nature are listed in this account. These are generally projects which are done by City forces but require substantial outlay for materials or partial assistance. Examples would be replacing parts of streets, toilet facilities in various parks, resurfacing alleys which have become too deteriorated to maintain, etc. These are substantial items but not to be confused with capital improvements which are major projects requiring particular attention as to financing and timing as well as planning.
.31	CAPITAL IMPROVEMENTS.....	Here appear such major items usually done by contract, such as additions of wings on to buildings, construction of airport control tower, new fire station or substation, reservoir, water plant, trunk line installation, etc.
.32	DEBT RETIREMENT.....	This heading reflects the funds to retire existing debts within programs which operate the facility originally financed by the bond issue.

CITY OF GRAND JUNCTION, 1962 BUDGET

SUPPORTING DATA

3. Account Detail:

-1	General - Stores	-56	Reservoir Maintenance
-2	General - Non-Stores	-57	General Liability Insurance
-3	Postage	-58	Sewer & Water Line Mat'l
-4	Equipment Rent	-59	Equipment Purchase
-5	Dues & Publications	-60	Abstract Services
-6	Telephone	-61	Filing Fees
-7	Heating	-62	Maps & Code Books
-8	Electricity	-63	First Aid Supplies
-9	Water & Sewer	-64	Employment Services
-10	Conferences & Schools	-65	Engineering
-11	Operating Capital	-66	Prisoner Food & Expense
-12	Printed Forms	-67	Animal Food
-13	Repairs & Replacements	-68	Audit
-14	Advertising	-69	Election
-15	Small Items - General	-70	Contingencies
-16	Maintenance Contracts	-71	Legal Fees
-17	Fire Insurance	-72	Medical Exam.
-18	Transportation	-73	Evidence Costs
-19	Maintenance Services	-74	Hose & Supplies
-20	Official Bonds	-75	Food stuffs for resale
-21	Laundry	-76	Ammunition
-22	Meals	-77	Sales Tax
-23	Parts & Materials	-78	Bibliographical Center
-24	Utility Transfers	-79	Radio Equipment
-25	Debt Retirement	-80	Books
-26	Chemicals	-81	Periodicals
-27	Radio Maintenance	-82	Records
-28	Fertilizer	-83	Pamphlets
-29	Nursery Stock - Seed	-84	Documents
-30	Swimming Suits & Towels	-85	Civic Participation
-31	Photo Supplies	-86	State Liquor Tax
-32	Janitor Supplies	-87	Health Dept. Support
-33	Gravel	-88	Land Acquisition
-34	Asphalt	-89	Athletic Equipment
-35	Concrete	-90	Special Counsel
-36	Salt	-91	Regional Planning
-37	Gasoline	-92	Jury Expense
-38	Oil & Grease	-93	Office Supply Inventory
-39	Diesel Fuel	-94	Blue Printing
-40	Anit-freeze	-95	Uniforms & Clothing Allow.
-41	Tires	-96	Street Repairs
-42	Street Broom Materials	-97	Future Equip Purchases
-43	Street Paint	-98	Boiler Inspection
-44	Meter Repairs	-99	Meters & Yokes
-45	Traffic Signs	-100	Space Rental
-46	Street Name Signs	-101	Annual Report
-47	Street Light Repairs	-102	Xmas Lights
-48	Signal Light Repairs	-103	Paper Baling
-49	Dog Pound Service	-104	Damage Repairs, Accidents
-50	Parking Lot Rental	-105	Health Insurance
-51	Water Fees & Assessm'ts	-106	Life Insurance
-52	Spec Impr Assessments	-107	Fleet Insurance
-53	Business Trips	-108	Driver School
-54	Extension of Water Lines	-109	Civil Defense Support
-55	Extension of Sewer Lines		

CITY OF GRAND JUNCTION, 1962 BUDGET

PART V

IMPLEMENTING

DOCUMENTS

CITY OF GRAND JUNCTION, 1962 BUDGET

IMPLEMENTING DOCUMENTS

R E S O L U T I O N

BE IT RESOLVED by the City Council of Grand Junction, Colorado, that all regular full-time positions are classified as to pay range in Section I of this resolution, and that the following salaries as indicated in Section II be paid for the year 1962, effective January 1, 1962, and thereafter until such time as the City Council shall make changes therein. Such salaries shall be paid twice each and every month at regular intervals, or other established pay period:

Section I: POSITION CLASSIFICATION

SALARY RANGE No. 1:

None

SALARY RANGE No. 2:

Clerk #2

Cashier

Secretary #3

SALARY RANGE No. 3:

Deputy City Clerk
Jr. Accountant
Machine Accountant

Secretary #2
Clerk #1
Recre'tn Utility Man

Street Crewman #3
Communtns Operator

SALARY RANGE No. 4:

Secretary #1
Librarian #2
Librarian #3
Librarian #5
Trash Crewman #2

Street Crewman #2
Maintenance Man #2
Utilities Crewman #2
Custodian #2
Zoo Keeper

Park Crewman
Stadium Keeper
Greens Keeper
Forestry Crewman
Cemetery Crewman
Lube Man

SALARY RANGE No. 5:

Trash Crewman #1
Street Crewman #1
Utilities Crewman #1
Filter Plant Operator
Disposal Pl Operator

Purchasing Clerk
Stock Clerk
Maintenance Man #1
Meter Reader
Meter Man

Golf Pro
Land Fill Operator
Custodian #1
Park Machinist
Tree Trimmer

SALARY RANGE No. 6:

Chief Meter Reader
Ass't Court Clerk

Mechanic
Pool Operator

Dog Warden
Gen'l Inspector

(Continued next page)

CITY OF GRAND JUNCTION, 1962 BUDGET

IMPLEMENTING DOCUMENTS

POSITION CLASSIFICATION (continued)

SALARY RANGE No. 7:

Jr. Draftsman
Forestry Foreman

Court Clerk
Intake Tender

Plbg Inspector

SALARY RANGE No. 8:

Utilities Foreman
Park Foreman
Cemetery Foreman

Patrolman
Fireman
Jail Warden

Office Engineer
Field Engineer

SALARY RANGE No. 9:

Disposal P1 Chief

Electrical Inspector

Police Sergeant

SALARY RANGE No. 10:

Purchasing Agent
Fire Lieutenant

Police Lieutenant
Police Detective

Filter P1 Chief
Maint. Supervisor

SALARY RANGE No. 11:

Police Captain
Fire Captain

Utilities Admin.

Bldg Inspector

SALARY RANGE No. 12:

Chief Librarian
Pub Wks Supervisor

Utilities Supervsr
Sanitation Supervsr

Ass't Fire Chief
Equip Supervsr

SALARY RANGE No. 13:

City Clerk

Finance Director

Project Engineer

SALARY RANGE No. 14:

Police Chief

Fire Chief

Recreat'n Director
Developm't Director

SALARY RANGE No. 15:

City Engineer

Parks Director

SALARY RANGE No. 16:

Public Works Director
Utilities Director

CITY OF GRAND JUNCTION, 1962 BUDGET

IMPLEMENTING DOCUMENTS

Section II:

SALARY SCHEDULE FOR PERMANENT POSITIONS

Job Range No.	A	B	C	D	E	F	G	H	I	J	K	L	M	N	O	P
1.	264	268	274	280	286	292	296	300	304	308	312	314	316	318	320	322
2.	272	276	282	288	294	300	304	308	312	316	320	322	324	326	328	331
3.	280	284	290	296	302	308	312	316	320	324	328	331	332	334	336	338
4.	288	292	298	304	310	316	320	324	328	333	336	338	340	342	344	346
5.	300	306	316	324	333	342	348	354	362	366	372	375	378	381	384	387
6.	312	318	327	336	345	354	362	366	372	378	384	387	390	393	396	399
7.	324	330	339	348	357	366	372	378	383	391	396	399	402	405	408	411
8.	336	342	351	361	369	378	385	391	396	402	408	411	415	417	420	425
9.	352	360	372	385	396	408	416	425	431	440	448	452	456	460	464	468
10.	368	376	388	400	412	424	431	440	450	456	464	468	472	476	480	484
11.	384	392	404	416	431	440	448	456	465	472	480	484	488	492	496	500
12.	400	408	420	431	444	456	464	472	480	488	496	500	504	508	512	516
13.	424	436	454	472	490	508	520	532	544	556	568	574	580	586	592	598
14.	448	460	478	496	514	532	544	556	568	580	592	598	604	610	616	622
15.	472	484	502	520	538	550	562	574	586	598	610	616	622	628	634	640
16.	496	508	526	544	562	580	592	604	616	628	640	646	652	658	664	670

NOTES: 1. To find hourly rate, divide monthly rate by 176.

ADOPTED AND APPROVED this day of 1961.

ATTEST:

APPROVED:

City Clerk

Ed McCormick, President of the City Council

CITY OF GRAND JUNCTION, 1962 BUDGET

IMPLEMENTING DOCUMENTS

R E S O L U T I O N

A RESOLUTION ADOPTING A BUDGET FOR DEFRAYING THE EXPENSES AND LIABILITIES FOR THE FISCAL YEAR ENDING DECEMBER 31, 1962

WHEREAS, in accordance with the provisions of Article VI, Section 59, of the Charter of the City of Grand Junction, the City Manager of said City has submitted to the City Council, a budget estimate of the revenues of said City and the expenses of conducting the affairs thereof for the fiscal year ending December 31, 1962; and

WHEREAS, after full and final consideration of the budget estimate the City Council is of the opinion that the budget should be approved and adopted;

NOW, THEREFORE, BE IT RESOLVED BY THE CITY COUNCIL OF THE CITY OF GRAND JUNCTION, COLORADO:

That the budget estimate of the revenues and expenses of conducting the affairs of said City for the fiscal year ending December 31, 1962, as submitted by the City Manager, be and the same is hereby adopted and approved as the budget estimate for defraying the expenses and liabilities against said City for the fiscal year ending December 31, 1962.

ADOPTED AND APPROVED this 15th day of November, 1961.

APPROVED:



President of the Council

ATTEST:



City Clerk

CITY OF GRAND JUNCTION, 1962 BUDGET

IMPLEMENTING DOCUMENTS

R E S O L U T I O N

LEVYING TAXES FOR THE YEAR 1961
IN THE CITY OF GRAND JUNCTION, COLORADO

BE IT RESOLVED by the City Council of the City of Grand Junction, Colorado:

Section 1. That there shall be and hereby is levied upon all taxable property within the limits of the City of Grand Junction, Colorado, for the year 1961 according to the assessed valuation of said property, a tax of seventeen and five-tenths (17.5) mills on the dollar (\$1.00) upon the total assessment of taxable property within the City of Grand Junction, Colorado for the purpose of paying the expenses of the municipal government of said City, and certain indebtedness, including interest upon indebtedness of the City, for the fiscal year ending December 31, 1962.

ADOPTED AND APPROVED this 20th day of September, 1961.

APPROVED:



President of the Council

ATTEST:



City Clerk

CITY OF GRAND JUNCTION, 1962 BUDGET

IMPLEMENTING DOCUMENTS

T A X L E V Y C E R T I F I C A T I O N

TO COUNTY COMMISSIONERS AND ASSESSOR

STATE OF COLORADO)
)
COUNTY OF M E S A) SS
)
CITY OF GRAND JUNCTION)

To the Commissioners of Mesa County, Colorado:

This is to certify that the tax levy to be assessed by you upon all property within the limits of the City of Grand Junction for the year 1961, as determined and fixed by the City Council by Resolution duly passed on the 20th day of September, 1961, is seventeen and five-tenths (17.5) mills, the revenue yield of said levy to be used for the purpose of paying the expenses of the municipal government and interest upon the principal of outstanding bonds, and you are authorized and directed to extend said levy upon your tax list.

IN WITNESS WHEREOF, I have hereunto set my hand and affixed the seal of the City of Grand Junction, Colorado, this 21st day of September, 1961.



Helen C. Tomlinson
City Clerk

CC - County Assessor

ORDINANCE NO. _____

AN ORDINANCE APPROPRIATING CERTAIN SUMS OF MONEY TO DEFRAY THE NECESSARY EXPENSES AND LIABILITIES OF THE CITY OF GRAND JUNCTION, COLORADO, FOR THE FISCAL YEAR BEGINNING JANUARY 1, 1962 AND ENDING DECEMBER 31, 1962 AND FIXING THE SALARY OF THE CITY MANAGER OF SAID CITY.

BE IT ORDAINED BY THE CITY COUNCIL OF THE CITY OF GRAND JUNCTION, COLORADO:

Section 1. That the following sums of money, or so much thereof as may be necessary, be and the same are hereby appropriated for the purpose of defraying the necessary expenses and liabilities of the City of Grand Junction, Colorado, for the fiscal year beginning January 1, 1962 and ending December 31, 1962, said sums to be derived from the various revenue funds as indicated:

For Legislation & Counsel Dept.....		\$ 16,480.
Revenue from General Fund:	\$ 16,480.	
For Judiciary Dept.....		5,784.
Revenue from General Fund:	5,784.	
For Management Dept.....		19,270.
Revenue from General Fund:	19,270.	
For Records Dept.....		22,117.
Revenue from General Fund:	22,117.	
For Finance Dept.....		50,383.
Revenue from General Fund:	50,383.	
For Development Dept.....		31,380.
Revenue from General Fund:	31,380.	
For Public Works Dept.....		(643,641.)A (600,817.)B
Revenue from General Fund:	(438,620)A (395,796)B	
Revenue from Sanitation Fund:	144,694.	
Revenue from Airport Fund:	60,327.	
For Utilities Dept.....		773,253.
Revenue from Water Fund:	674,266.	
Revenue from Sewer Fund:	98,987.	
For Police Dept.....		231,060.
Revenue from General Fund:	231,060.	
For Fire Dept.....		(223,344)A (241,168)B
Revenue from General Fund:	(223,344)A (241,168)B	
For Parks & Recreation Dept.....		251,587.
Revenue from General Fund:	165,488.	
Revenue from Linc Park Pool Fund:	20,970.	
Revenue from Moyer Pool Fund:	11,166.	
Revenue from Cemetery Fund:	22,708.	
Revenue from Park Improve Fund:	31,255.	
For Library Dept.....		45,854.
Revenue from Library Fund:	45,854.	
For General Government Dept.....		71,448.
Revenue from General Fund:	57,938.	
Revenue from Land Fund:	13,510.	
TOTAL DEPARTMENTAL BUDGET.....		(\$2,385,601.)A (\$2,360,601.)B
TOTAL REVENUE.....		(\$2,385,601.)A (\$2,360,601.)B

The following sum shall be appropriated to the Stores Division, said sum to be derived from charges to various departments using materials stocked in "Stores Inventory":

For Stores Division in the Finance Department.....\$ 69,171.
Revenue from Stores Fund.....\$69,171.

The following sum shall be appropriated to the Equipment Division, said sum to be derived from equipment rentals to be charged the various departments of the City for use of said equipment from the appropriations of their respective departments.

For Equipment Division in the Public Works Dept....\$201,637.
Revenue from Equipment Fund..\$201,637.

Section 2. That the following amounts are hereby levied for collection in the year 1962 and for the specific purpose indicated.

For General Fund (based on
General Fund appropriation)
Seventeen and one-half mills (17.5).....\$647,823.

Section 3. That commencing January 1, 1962, the salary of the City Manager of the City of Grand Junction, Colorado shall be eleven thousand four hundred sixty (\$11,460.) dollars per annum.

Section 4. By reason of the fact that this ordinance must be in effect on January 1st, 1962, a special emergency is declared to exist and the City Council finds and determines that the passage of this ordinance is immediately necessary for the preservation of the public peace, health and safety, and that it shall take effect upon its passage.

Passed and adopted this _____ day of _____ 1961.

President of the City Council

ATTEST:

City Clerk