

EXHIBIT 4: 2nd Street Promenade Concept

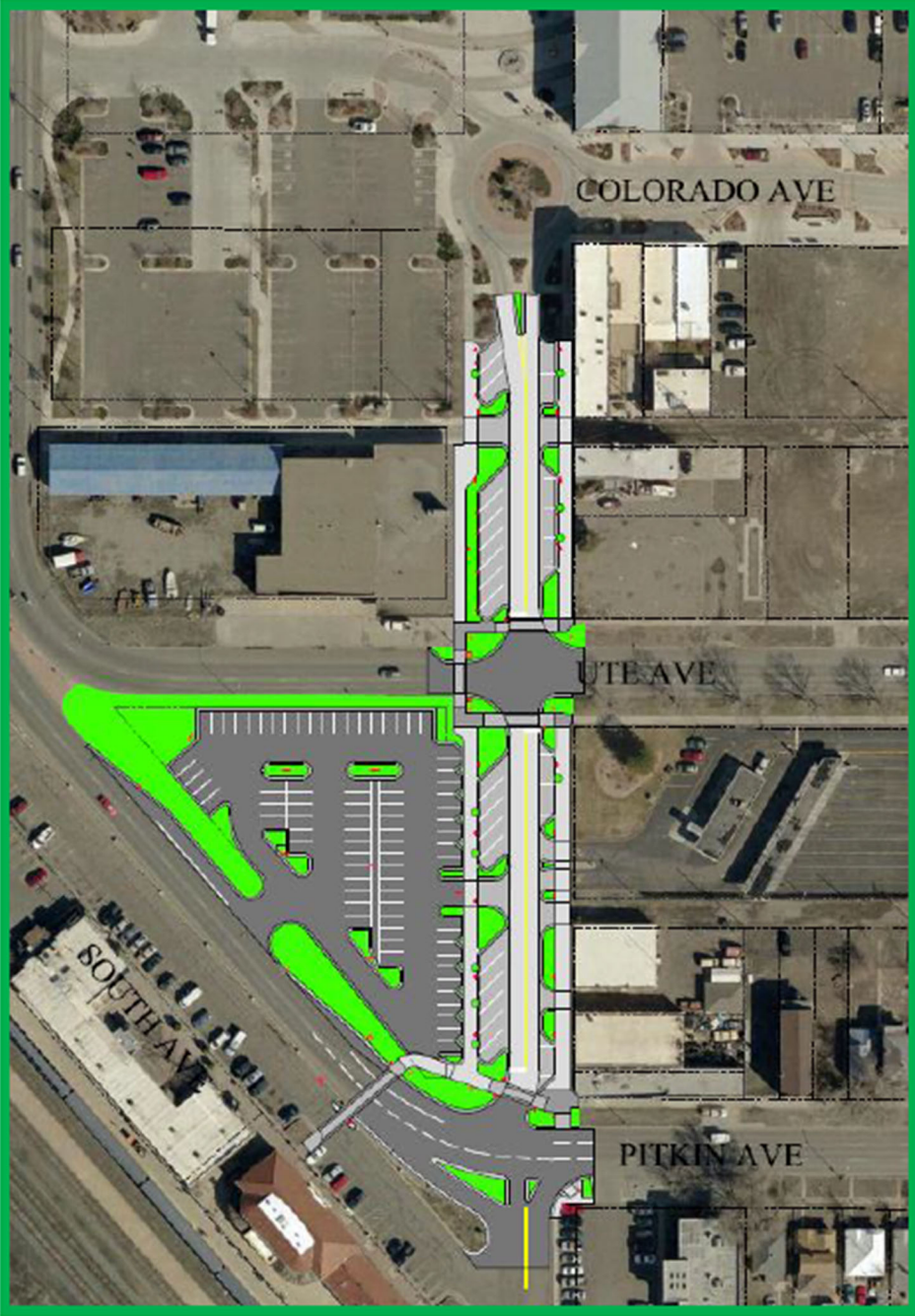


EXHIBIT 4: 2nd Street Promenade Concept (cont'd)



A road diet could allocate 20' of 2nd St. ROW to a pedestrian tree-lined promenade with signage, art, sidewalks, and street furnishings. A pedestrian crossing at South Street, a city-owned and maintained street, would provide safe access from the Train Depot to the 2nd Street promenade.

