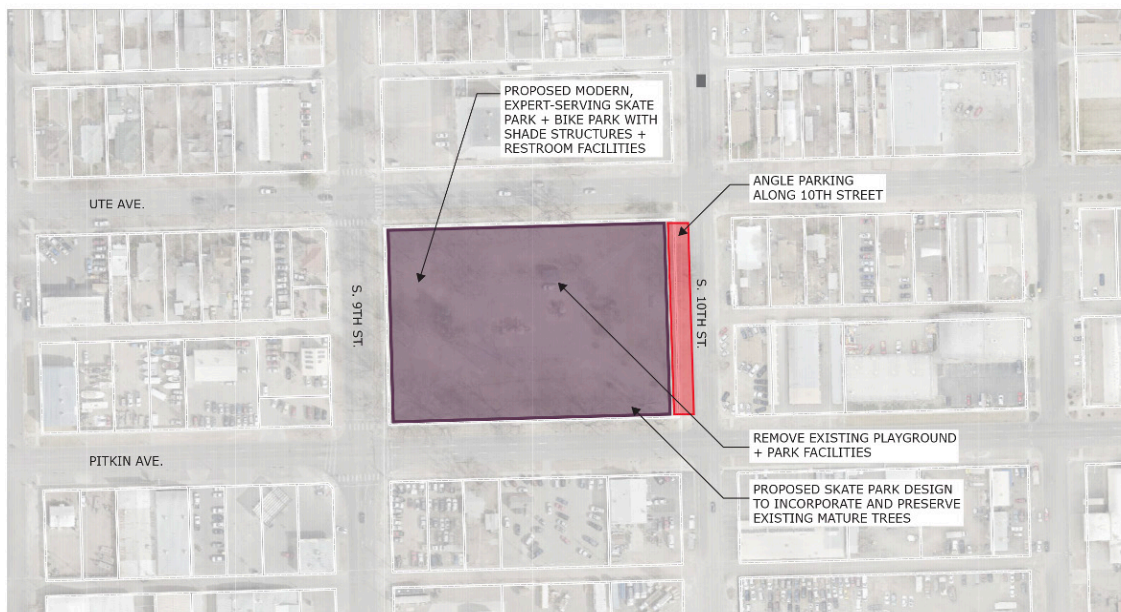


8.) Emerson Park Renovation

Long-term Priority	Emerson Park is located in an area above or at the service level for both walkable and neighborhood access. It is an ideal location for a destination bike and skate park that would draw youth and families from all over the Western slope.
--------------------	---

One of the four original historic parks along with Whitman, Hawthorn, and Washington Parks, Emerson is located in an area is challenged by limited parking and pedestrian access across Pitkin and Ute Avenues. The existing playground and supporting facilities are underused and dated. This park is an opportunity to add significant value to the local neighborhoods as a destination bike and skate park serving skilled users (including all wheel sports: skateboard, scooter, freestyle bike, skate). The addition of angle parking along 10th Street would improve access. There are many mature, legacy trees in this park that contribute highly to the urban canopy. These trees should be preserved; these trees and the large available area present an opportunity to design a unique skate park experience, with ‘flow’ and street-style elements winding through the existing trees and free-style terrain in the larger open space in the center of the park. As with any high-level skate park facility, a community process that includes a skate park designer should be implemented to develop the master plan for the renewal of this park space.

Figure 26: Emerson Park Concept Plan



EMERSON PARK - CONCEPT PLAN
 GRAND JUNCTION PROS
 NOVEMBER 2020