



Purchasing Division

ADDENDUM NO. 4

DATE: November 30, 2023
FROM: City of Grand Junction Purchasing Division
TO: All Offerors
RE: F ½ Road Parkway Phase 1

Offerors responding to the above referenced solicitation are hereby instructed that the requirements have been clarified, modified, superseded, and supplemented as to this date as hereinafter described.

Please make note of the following clarifications:

1. The attached **electrical plans** were omitted from the original solicitation be error. Please see attached.

The original solicitation for the project noted above is amended as noted.

All other conditions of subject remain the same.

Respectfully,



A handwritten signature in blue ink that reads "Dolly Daniels". The signature is written in a cursive, flowing style.

Dolly Daniels, Senior Buyer
City of Grand Junction, Colorado

PEDESTRIAN LIGHTING GENERAL NOTES:

1. THIS PROJECT WILL BE BID FOR THE INSTALLATION OF PEDESTRIAN LIGHTING, UNDERPASS LIGHTING, LIFT STATION POWER AND INSTALLATION OF POWER PEDESTAL PPI. BASE PROJECT: COMPLETE THE PEDESTRIAN LIGHTING AROUND THE F 1/2 RD PARKWAY (PHASE 1), PROJECT.
2. THIS PROJECT CONSISTS OF WORK TO INSTALL ALL WIRING, CONDUIT, PULL BOXES, AND POWER PANELS. REFERENCE SCHEDULE OF LIGHTING DEVICES AND SUMMARY OF QUANTITIES.
3. TYPES "SA" LIGHT STANDARD & LUMINARIES (PEDESTRIAN LIGHT), PAY ITEM 613-30003, SHALL INCLUDE THE FOLLOWING ITEMS FROM ILLUMINATION SYSTEMS LIGHTING LOCATED AT 5 SOUTH KALAMATH STREET, DENVER, CO 80223, 303.295.2900, OR EQUAL. THE ITEMS NUMBERS ARE AS FOLLOWS: TYPE "SA" 1A-1527LED-R-12L-40-T2-MDLO18-5V1-EZ-H55-OAPT/450P414-.125/BK
4. PROVIDE COLLISION BREAK AWAY CONNECTORS FOR TYPE "SA" FIXTURES. TYPE "SA" FIXTURES TO BE 12 FOOT ABOVE FINISHED GRADE TO BOTTOM OF LIGHT.
5. PROVIDE NEW MILBANK PANEL "PPI", 240V, 1ϕ, 3W 100A, 16 CIRCUITS SWITCHED AND 16 CIRCUITS NOT SWITCHED, MODEL #CP3B51C10A22C5XC5L16 LOCATED AS SHOWN IN DRAWINGS.
6. ALL PEDESTRIAN LIGHTING FIXTURES(TYPE "SA") INSTALLED ON THE PROJECT WILL BE CONTROLLED WITH A ELECTRICAL CONTRACTOR SUPPLIED PHOTOCELL TO BE LOCATED IN NEW MILBANK POWER PEDESTAL IN SWITCHED SECTION OF PANEL. ORIENT PANEL SO THAT PHOTOCELL WILL BE ORIENTED TO NORTH, TYPICAL.
7. PROVIDE 2" PVC SCHEDULE 80 CONDUIT BETWEEN EACH JUNCTION BOX LABELED "UB".
8. PROVIDE #10 THWN TRACER WIRE IN NEW CONDUIT TO FACILITATE LOCATION OF CONDUIT IN THE FUTURE.
9. ELEVATIONS SHOWN IN THE SCHEDULE OF LIGHTING DEVICES ON THE PLANS SHEETS REPRESENT THE DESIGN FINISHED GRADE OR THE EXISTING GROUND FINISHED GRADE. THESE ELEVATIONS DO NOT INDICATE THE TOP ELEVATION OF THE LUMINARIES (PEDESTRIAN) FOUNDATION. PEDESTRIAN LIGHTING FOUNDATIONS SHALL BE CONSTRUCTED PER THE MANUFACTURERS RECOMMENDATIONS.
10. PULL BOXES FOR LIGHT STANDARD (PEDESTRIAN AND STREET) WILL BE TYPE 1 CDOT PULL BOXES 11"X18"X12".
11. PULL BOXES WILL BE INSTALLED IN GRADES WITHOUT CONCRETE WHERE POSSIBLE.
12. ALL ELECTRICAL CONDUIT SHALL BE SCHEDULE 80 PVC UNLESS NOTED OTHERWISE, TYPICAL.
13. UNLESS OTHERWISE NOTED, THE WORK DESCRIBED ON THE PLANS SHALL INCLUDE PROVIDING ALL LABOR AND MATERIALS NECESSARY FOR A COMPLETE AND OPERATIONAL ELECTRICAL SYSTEM. FURNISH ALL REQUIRED ITEMS WHETHER SUCH ARE SPECIFICALLY SHOWN OR NOT.
14. INFORMATION SHOWN ON DRAWINGS IS DIAGRAMMATIC ONLY AND SHALL NOT BE SCALED. OBTAIN VERIFY EXACT LOCATIONS, MEASUREMENTS, LEVELS, SPACE REQUIREMENTS, POTENTIAL CONFLICTS AMONG TRADES AND FOR ADJUSTING THE WORK REQUIRED BY THE ACTUAL CONDITIONS OF THE PROJECT. CONTRACTOR IS RESPONSIBLE FOR LOCATING ALL UNDER GROUND OBSTRUCTIONS AND MAKING ALLOWANCES FOR FIELD ADJUSTMENT OF LOCATION OF LUMINARIES TO AVOID SHUT DOWN OF ANY SERVICES OR SYSTEMS THAT ARE TO REMAIN.
15. BEFORE SUBMITTING THE BID ELECTRICAL CONTRACTOR SHALL VISIT AND EXAMINE THE PREMISES AND/OR JOB SITE SO AS TO ASCERTAIN THE EXISTING CONDITIONS IN WHICH THE CONTRACTOR WILL BE OBLIGED TO OPERATE IN PERFORMING HIS PART OF THE CONTRACT TO ANTICIPATE ANY POSSIBLE SPACE RESTRICTIONS OR CONSTRAINTS THAT COULD AFFECT THE TIMELY COMPLETION OF THE ELECTRICAL WORK IN ACCORDANCE WITH THE INTENT OF THE SPECIFICATIONS AND DRAWINGS. THE ELECTRICAL CONTRACTOR SHALL REPORT TO THE THE PROJECT ENGINEER OR GENERAL CONTRACTOR ANY CONDITIONS THAT MIGHT PREVENT THE SPECIFIED ELECTRICAL WORK FROM BEING PERFORMED IN THE MANNER INTENDED. NO CONSIDERATION OR ALLOWANCE WILL BE GRANTED TO THE ELECTRICAL CONTRACTOR FOR FAILURE TO VISIT THE PROJECT SITE, OR FOR ANY ALLEGED MISUNDERSTANDING OF THE MATERIALS TO BE FURNISHED OR WORK TO BE DONE..
16. THE ELECTRICAL CONTRACTOR SHALL EXAMINE THE DRAWINGS OF ALL TRADES WHOSE WORK RELATES TO OR IS DEPENDENT ON ELECTRICAL WORK TO BECOME FULLY INFORMED OF THE EXTENT AND CHARACTER OF THEIR SPECIFIED WORK AND BE ABLE TO COORDINATE WITH OTHER TRADES WHILE AVOIDING POSSIBLE INTERFERENCE WITH THE ELECTRICAL WORK.
17. THE CONTRACTOR SHALL USE CONDUIT PLUGS AND SEALING PLUGS FOR SEALING ALL EMPTY CONDUITS AND CONDUITS OCCUPIED WITH CABLING, RESPECTIVELY, INSTALLED UNDER THIS CONTRACT. CONDUIT PLUGS SHALL BE MANUFACTURED FROM HIGH-IMPACT PLASTIC COMPONENTS, COMBINED WITH DURABLE ELASTIC GASKETS. THEY SHALL BE CORROSION PROOF AND APPROPRIATE FOR USE AS EITHER A LONG-TERM OR TEMPORARY SEAL. CONDUIT PLUGS SHALL BE REMOVABLE AND REUSABLE. THEY SHALL BE BOTH WATERTIGHT AND AIRTIGHT TO PREVENT THE FLOW OF WATER AND BUILDUP OF SEDIMENTATION WITHIN THE CONDUIT. EACH CONDUIT PLUG SHALL BE EQUIPPED WITH A ROPE TIE DEVICE TO ALLOW THE SECURING OF PULL ROPE TO THE PLUG'S BACK COMPRESSION PLATE. THE CONTRACTOR SHALL ATTACH THE PULL ROPE TO THE BACK COMPRESSION PLATE OF THE PLUG AND STORE EXCESS SLACK PULL ROPE BEHIND THE PLUG WITHIN THE CONDUIT FOR FUTURE USE.

PPI-X ELECTRICAL CIRCUIT NUMBER (REFER TO PANEL SCHEDULES)

- UB NEW HEAVY DUTY, TRAFFIC RATED, FLUSH-TO-GRADE POLYMER CONCRETE SPLICE BOX WITH HEAVY DUTY, TRAFFIC RATED, BOLTED COVER. 11"X18"X12" TYPE 1. NUMBER ASSOCIATED IS NOT THE QUANTITY BUT THE IDENTIFIER ONLY.
-  UNDER GROUND BURIED RACEWAY (2#4 THWN CU AND 1#8 GND) IN 2" PVC CONDUIT (UNLESS NOTED OTHERWISE ON PLANS) IN 24" DEEP TRENCH, BURY AND COMPACTED BACKFILL TO CITY STANDARDS.
-  INSTALL SINGLE ARM PEDESTRIAN STANDARD OR STREET STANDARD AS SPECIFIED. NUMBER ASSOCIATED IS NOT THE QUANTITY BUT THE IDENTIFIER ONLY.

REVISION	DESCRIPTION	DATE	DRAWN BY	DATE
REVISION Δ	_____	_____	AJM	10/27/23
REVISION Δ	_____	_____	AJM	10/27/23
REVISION Δ	_____	_____	AJM	10/27/23
REVISION Δ	_____	_____	BH	10/27/23



PUBLIC WORKS
ENGINEERING DIVISION

F 1/2 RD PARKWAY, PH 1
COVER SHEET PLAN

E1
of 16



Know what's below.
Call before you dig.



ACM CONSULTING
ELECTRICAL DESIGN, CONSULTING
ENGINEERS; PH: 970-245-7292
PO 3211 GRAND JCT., CO 81502
EMAIL: joelm@ACMengrs.com

Schedule of Lighting Devices

ITEM No.	613-3005			613-40012		
DESCRIPTION	LIGHT STANDARD AND LUMINAIRE LED (PEDESTRIAN)			LIGHT STANDARD FOUNDATION SPECIAL		NOTES
	EACH			EACH		
SHEET NO.	TYPE	EAST	NORTH	PLAN	PLAN	
E5	SA-1	78917.67	47491.17	1	1	1,2,3
E5	SA-2	79014.69	47491.34	1	1	1,2,3
E5	SA-3	79112.51	47491.51	1	1	1,2,3
E5	SA-4	79210.33	47491.68	1	1	1,2,3
E5	SA-5	79310.08	47491.86	1	1	1,2,3
E5	SA-6	79407.90	47492.03	1	1	1,2,3
E6	SA-7	79505.72	47492.20	1	1	1,2,3
E6	SA-8	79603.28	47492.38	1	1	1,2,3
E6	SA-9	79677.00	47492.48	1	1	1,2,3
E6	SA-10	79745.49	47492.63	1	1	1,2,3
E6	SA-11	79845.46	47492.80	1	1	1,2,3
E6	SA-12	79945.43	47492.98	1	1	1,2,3
E6	SA-37	79686.49	47334.53	1	1	1,2,3
E6	SA-38	79776.46	47334.68	1	1	1,2,3
E6	SA-39	79876.43	47334.86	1	1	1,2,3
E6	SA-40	79976.41	47334.63	1	1	1,2,3
E7	SA-13	80045.38	47488.19	1	1	1,2,3
E7	SA-14	80144.16	47472.10	1	1	1,2,3
E7	SA-15	80241.65	47450.28	1	1	1,2,3
E7	SA-16	80341.20	47441.69	1	1	1,2,3
E7	SA-17	80441.13	47440.54	1	1	1,2,3
E7	SA-18	80541.10	47440.68	1	1	1,2,3
E7	SA-41	80075.75	47324.58	1	1	1,2,3
E7	SA-42	80173.18	47302.60	1	1	1,2,3
E7	SA-43	80272.06	47286.88	1	1	1,2,3
E7	SA-44	80372.04	47282.45	1	1	1,2,3
E7	SA-45	80472.02	47282.59	1	1	1,2,3
E7	SA-46	80571.99	47282.73	1	1	1,2,3
E8	SA-19	80641.07	47440.83	1	1	1,2,3
E8	SA-20	80741.04	47440.97	1	1	1,2,3
TABLE TOTALS				30	30	

PEDESTRIAN LIGHTING GENERAL NOTES:
 1. EACH LIGHT TO HAVE A PULL BOX "UB", REFERENCE ELECTRICAL DRAWING SHEETS.

SCHEDULE OF LIGHTING DEVICES NOTES:
 1. FOUNDATION TOP HEIGHT EQUAL TO ADJACENT SIDEWALK
 2. LUMINAIRE LED(66 WATT) IS TO BE INCLUDED IN THE COST OF PAY ITEM 613-30005 LIGHT STANDARD AND LUMINIARE (PEDESTRIAN)
 3. FOUNDATION TOP HEIGHT AS SHOWN IN DETAIL.



Know what's below.
Call before you dig.

ACM CONSULTING
 ELECTRICAL DESIGN, CONSULTING ENGINEERS; PH: 970-245-7292
 PO 3211 GRAND JCT., CO 81502
 EMAIL: joelm@ACMengrs.com

REVISION Δ _____	DESCRIPTION _____	DATE _____	DRAWN BY <u>AJM</u> DATE <u>10/27/23</u>
REVISION Δ _____	DESIGNED BY <u>AJM</u> DATE <u>10/27/23</u>		
REVISION Δ _____	CHECKED BY <u>AJM</u> DATE <u>10/27/23</u>		
REVISION Δ _____	APPROVED BY <u>BH</u> DATE <u>10/27/23</u>		



PUBLIC WORKS
 ENGINEERING DIVISION

F 1/2 RD PARKWAY, PH 1
 LIGHTING SCHEDULES

Schedule of Lighting Devices

ITEM No.				613-3005	613-40012	
DESCRIPTION				LIGHT STANDARD AND LUMINAIRE LED (PEDESTRIAN)	LIGHT STANDARD FOUNDATION SPECIAL	NOTES
				EACH	EACH	
SHEET NO.	TYPE	EAST	NORTH	PLAN	PLAN	
E8	SA-21	80841.01	47441.11	1	1	1,2,3
E8	SA-22	80918.76	47451.05	1	1	1,2,3
E8	SA-23	81004.76	47441.29	1	1	1,2,3
E8	SA-24	81104.73	47441.48	1	1	1,2,3
E8	SA-25	81204.70	47441.62	1	1	1,2,3
E8	SA-47	80671.96	47282.87	1	1	1,2,3
E8	SA-48	80771.93	47283.01	1	1	1,2,3
E8	SA-49	80871.90	47283.15	1	1	1,2,3
E8	SA-50	80971.87	47283.29	1	1	1,2,3
E8	SA-51	81071.84	47283.44	1	1	1,2,3
E8	SA-52	81171.81	47283.58	1	1	1,2,3
E9	SA-26	81304.67	47441.77	1	1	1,2,3
E9	SA-27	81404.67	47441.91	1	1	1,2,3
E9	SA-28	81479.56	47510.71	1	1	1,2,3
E9	SA-35	81594.25	47498.43	1	1	1,2,3
E9	SA-36	81641.09	47424.61	1	1	1,2,3
E9	SA-53	81271.78	47283.72	1	1	1,2,3
E9	SA-54	81369.63	47283.67	1	1	1,2,3
E9	SA-58	81570.58	47244.65	1	1	1,2,3
E9	SA-59	81652.81	47292.33	1	1	1,2,3
E10	SA-55	81444.23	47226.13	1	1	1,2,3
E10	SA-56	81482.05	47144.46	1	1	1,2,3
E10	SA-57	81572.98	47145.94	1	1	1,2,3
E11	SA-29	81476.90	47610.84	1	1	1,2,3
E11	SA-30	81485.17	47709.59	1	1	1,2,3
E11	SA-31	81499.68	47808.50	1	1	1,2,3
E11	SA-32	81507.94	47919.86	1	1	1,2,3
E11	SA-33	81507.99	48006.78	1	1	1,2,3
E11	SA-34	81565.24	47593.81	1	1	1,2,3
TABLE TOTALS				29	29	

SCHEDULE OF LIGHTING DEVICES NOTES:
 1. FOUNDATION TOP HEIGHT EQUAL TO ADJACENT SIDEWALK
 2. LUMINAIRE LED(66 WATT) IS TO BE INCLUDED IN THE COST OF PAY ITEM 613-30005 LIGHT STANDARD AND LUMINAIRE (PEDESTRIAN)
 3. FOUNDATION TOP HEIGHT AS SHOWN IN DETAIL.

Tabulation of Approximate Quantities

Item No.	Ref. No.	Construction Note Description	Quantity	Unit	NOTES
		2 Inch Electrical Conduit (Plastic)	6684	LF	
		Type One Pull Box	67	EA	
		Wiring	1	LS	
		Light Standard and Luminaire (Pedestrian "SA")	59	EA	
		Light Standard Foundation (Special)	59	EA	
		Lighting Control Center (Special)	1	EA	
SUMMARY NOTES:					

PEDESTRIAN LIGHTING GENERAL NOTES:
 1. EACH LIGHT TO HAVE A PULL BOX "UB", REFERENCE ELECTRICAL DRAWING SHEETS.

REVISION Δ _____	DESCRIPTION _____	DATE _____	DRAWN BY <u>AJM</u>	DATE <u>10/27/23</u>
REVISION Δ _____			DESIGNED BY <u>AJM</u>	DATE <u>10/27/23</u>
REVISION Δ _____			CHECKED BY <u>AJM</u>	DATE <u>10/27/23</u>
REVISION Δ _____			APPROVED BY <u>BH</u>	DATE <u>10/27/23</u>



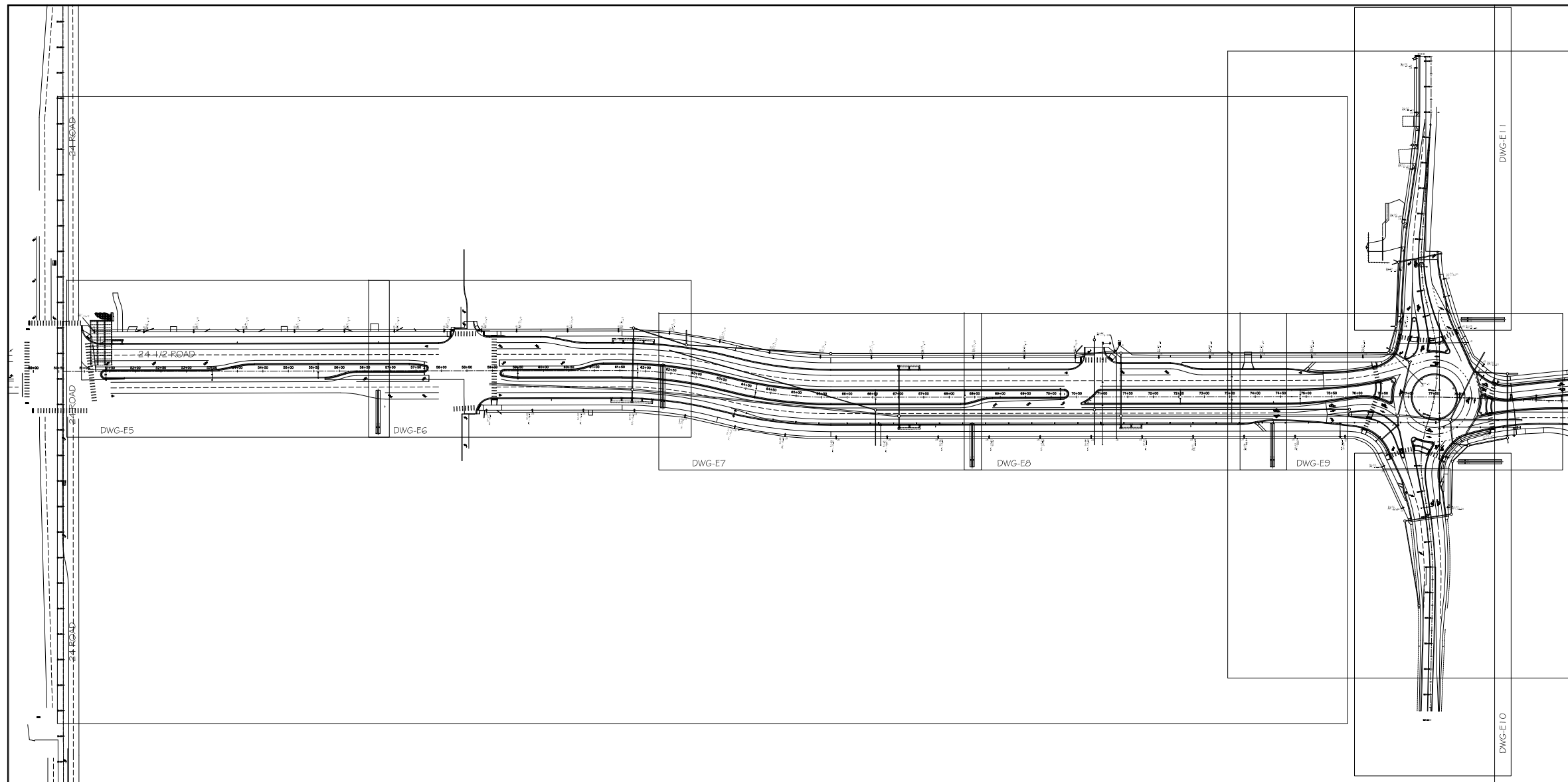
PUBLIC WORKS
ENGINEERING DIVISION

F 1/2 RD PARKWAY, PH 1
LIGHTING SCHEDULES

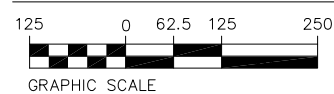


Know what's below.
Call before you dig.

ACM CONSULTING
 ELECTRICAL DESIGN, CONSULTING ENGINEERS; PH: 970-245-7292
 PO 3211 GRAND JCT., CO 81502
 EMAIL: joelm@ACMengrs.com



LIGHTING/ELECTRICAL PLAN KEY MAP PHASE 1



SCALE: 1"=250'



Know what's below.
Call before you dig.



ACM CONSULTING
ELECTRICAL DESIGN, CONSULTING
ENGINEERS; PH: 970-245-7292
PO 3211 GRAND JCT., CO 81502
EMAIL: joelm@ACMengrs.com

REVISION	DESCRIPTION	DATE	DRAWN BY	DATE
△			AJM	10/27/23
△			AJM	10/27/23
△			AJM	10/27/23
△			BH	10/27/23

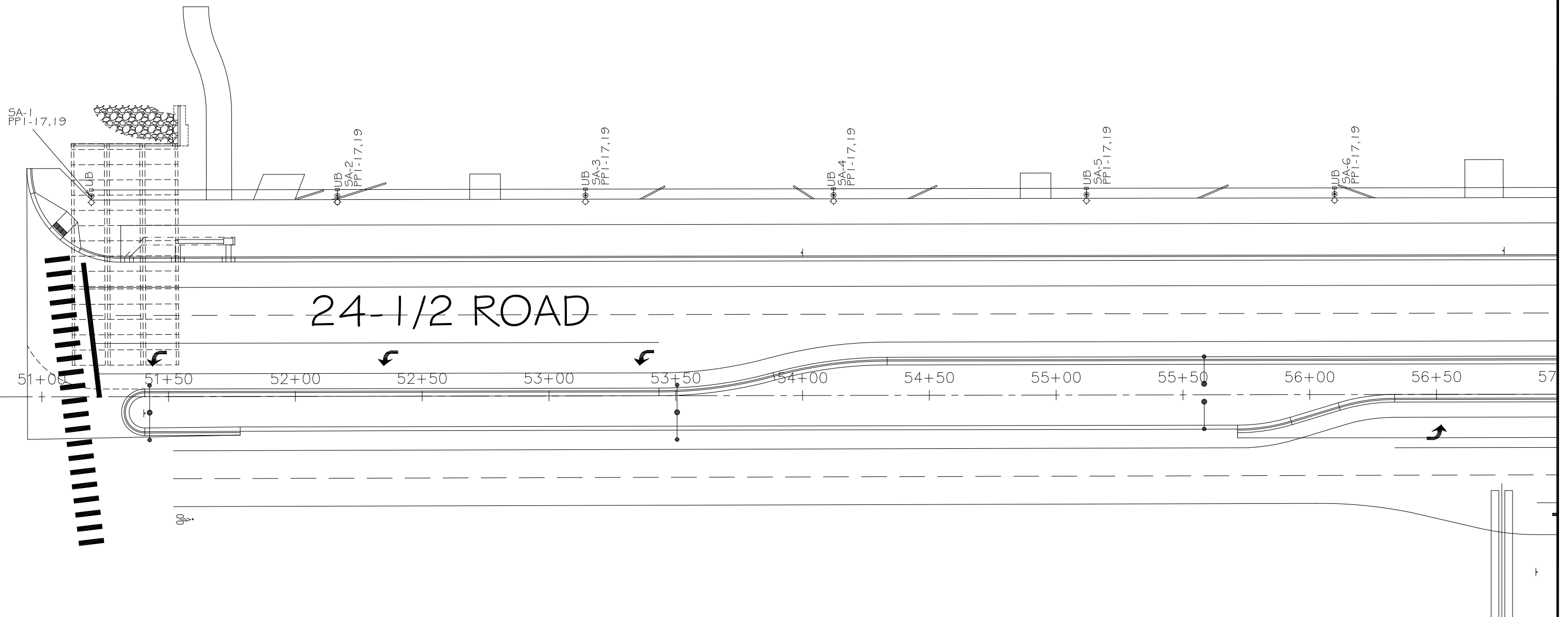


PUBLIC WORKS
ENGINEERING DIVISION

F 1/2 RD PARKWAY, PH 1
SITE LIGHTING PLAN

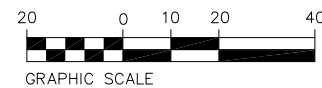
E4
of 16

24 ROAD



LIGHTING/ELECTRICAL PLAN PHASE 1

SCALE: 1"=40'



GENERAL NOTES:

1. POWER CIRCUIT AS SHOWN ON DRAWING, TYPICAL.
2. LIGHT TO BE ORIENTED TO BE PERPENDICULAR TO SIDEWALK AND SHINE ON SIDEWALK, TYPICAL.
3. PROVIDE 2-#4 THWN + #8GND IN 2" PVC SCHEDULE 80 CONDUIT BETWEEN PULL BOXES UNLESS SHOWN OTHERWISE, TYPICAL. WIRE LIGHTS IN PARALLEL NOT SERIES TO REDUCE VOLTAGE DROP.



Know what's below.
Call before you dig.



ACM CONSULTING
ELECTRICAL DESIGN, CONSULTING
ENGINEERS; PH: 970-245-7292
PO 3211 GRAND JCT., CO 81502
EMAIL: joelm@ACMengrs.com

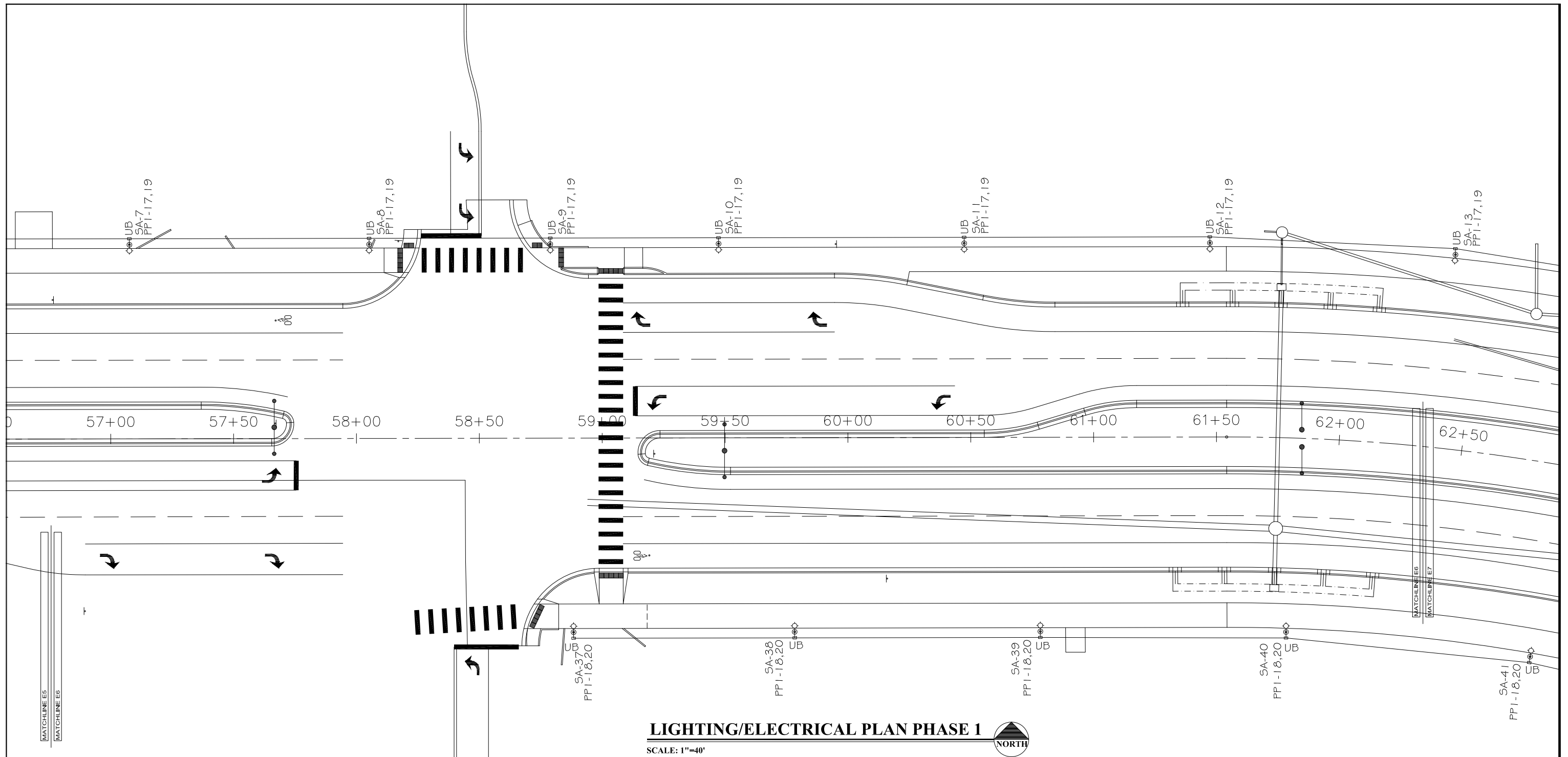
REVISION	DESCRIPTION	DATE	DRAWN BY	DATE
△			AJM	10/27/23
△			AJM	10/27/23
△			AJM	10/27/23
△			BH	10/27/23



PUBLIC WORKS
ENGINEERING DIVISION

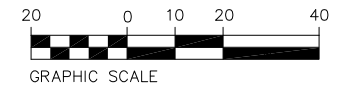
F 1/2 RD PARKWAY, PH 1
SITE LIGHTING PLAN

E5
of 16



LIGHTING/ELECTRICAL PLAN PHASE 1

SCALE: 1"=40'



GENERAL NOTES:

1. POWER CIRCUIT AS SHOWN ON DRAWING, TYPICAL.
2. LIGHT TO BE ORIENTED TO BE PERPENDICULAR TO SIDEWALK AND SHINE ON SIDEWALK, TYPICAL.
3. PROVIDE 2-#4 THWN + #8GND IN 2" PVC SCHEDULE 80 CONDUIT BETWEEN PULL BOXES UNLESS SHOWN OTHERWISE, TYPICAL. WIRE LIGHTS IN PARALLEL NOT SERIES TO REDUCE VOLTAGE DROP.



Know what's below.
Call before you dig.

ACM CONSULTING
ELECTRICAL DESIGN, CONSULTING
ENGINEERS; PH: 970-245-7292
PO 3211 GRAND JCT., CO 81502
EMAIL: joelm@ACMengrs.com

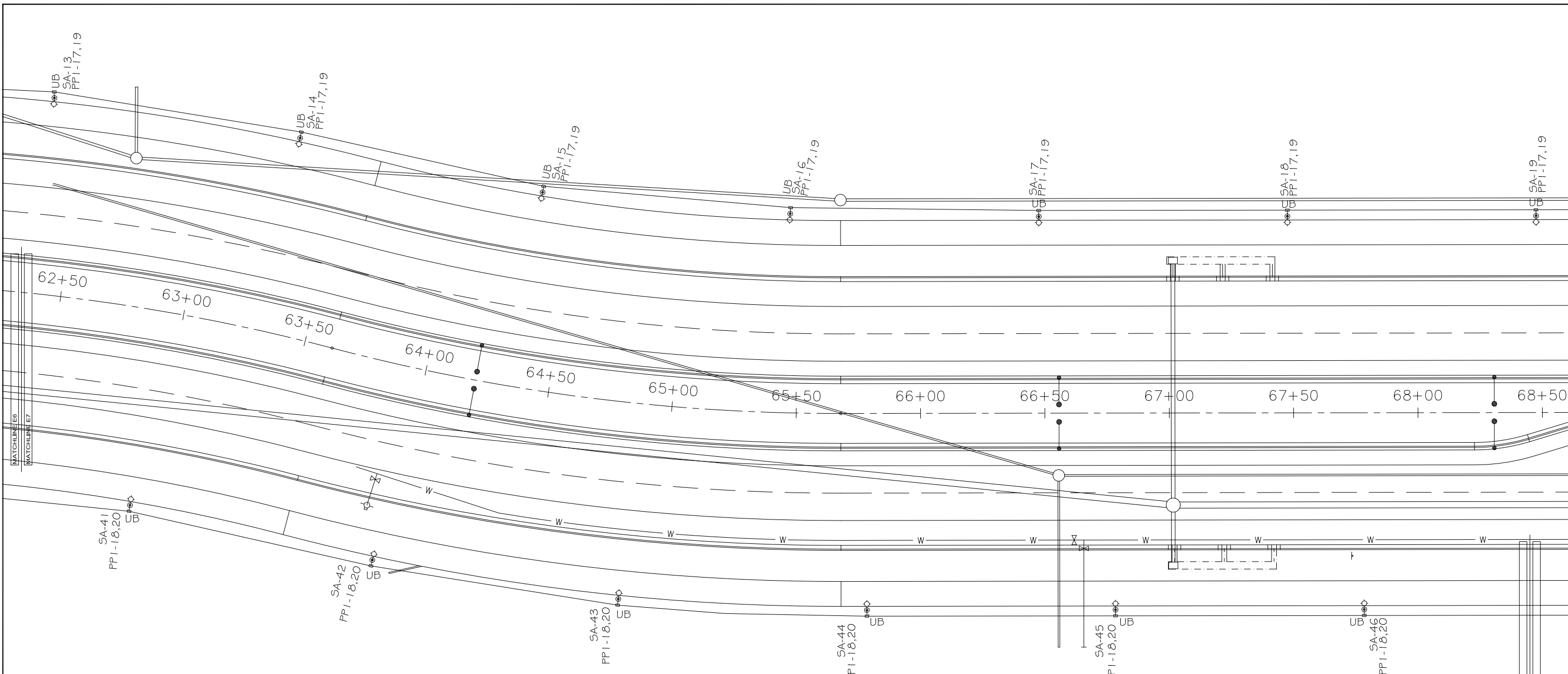
REVISION	DESCRIPTION	DATE	DRAWN BY	DATE
REVISION Δ			AJM	10/27/23
REVISION Δ			AJM	10/27/23
REVISION Δ			AJM	10/27/23
REVISION Δ			BH	10/27/23



PUBLIC WORKS
ENGINEERING DIVISION

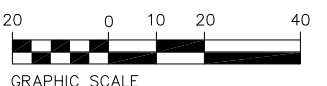
F 1/2 RD PARKWAY, PH 1
SITE LIGHTING PLAN

E6
of 16



LIGHTING/ELECTRICAL PLAN PHASE 1

SCALE: 1"=40'



GENERAL NOTES:

1. POWER CIRCUIT AS SHOWN ON DRAWING, TYPICAL.
2. LIGHT TO BE ORIENTED TO BE PERPENDICULAR TO SIDEWALK AND SHINE ON SIDEWALK, TYPICAL.
3. PROVIDE 2-#4 THWN + #8GND IN 2" PVC SCHEDULE 80 CONDUIT BETWEEN PULL BOXES UNLESS SHOWN OTHERWISE, TYPICAL. WIRE LIGHTS IN PARALLEL NOT SERIES TO REDUCE VOLTAGE DROP.



Know what's below.
Call before you dig.

ACM CONSULTING
ELECTRICAL DESIGN, CONSULTING
ENGINEERS; PH: 970-245-7292
PO 3211 GRAND JCT., CO 81502
EMAIL: joelm@ACMengrs.com

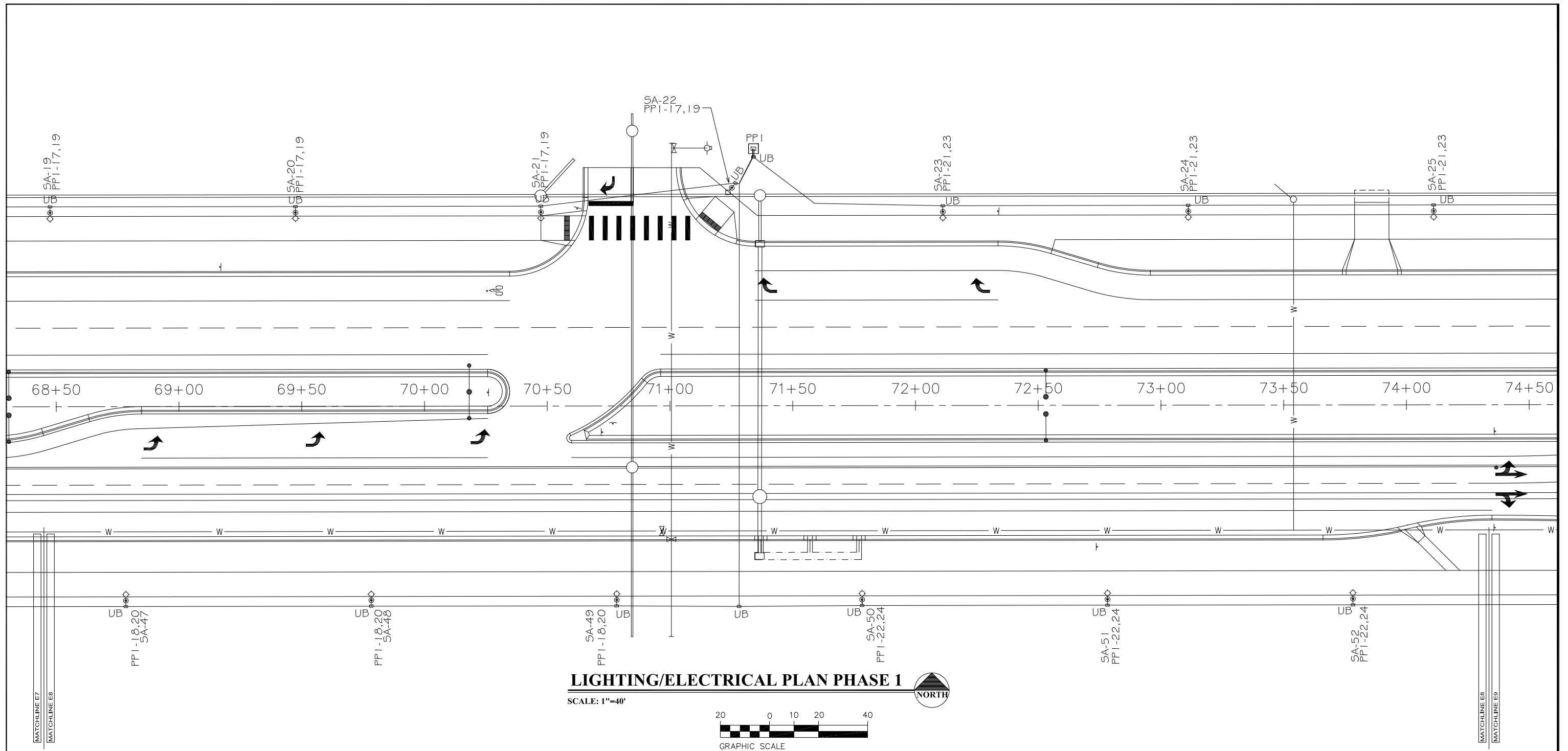
REVISION	DESCRIPTION	DATE	DRAWN BY	DATE
REVISION Δ			AJM	10/27/23
REVISION Δ			AJM	10/27/23
REVISION Δ			AJM	10/27/23
REVISION Δ			BH	10/27/23



PUBLIC WORKS
ENGINEERING DIVISION

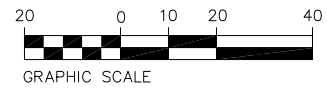
F 1/2 RD PARKWAY, PH 1
SITE LIGHTING PLAN

E7
of 16



LIGHTING/ELECTRICAL PLAN PHASE 1

SCALE: 1"=40'



GENERAL NOTES:

1. POWER CIRCUIT AS SHOWN ON DRAWING, TYPICAL.
2. LIGHT TO BE ORIENTED TO BE PERPENDICULAR TO SIDEWALK AND SHINE ON SIDEWALK, TYPICAL.
3. PROVIDE 2-#4 THWN + #8GND IN 2" PVC SCHEDULE 80 CONDUIT BETWEEN PULL BOXES UNLESS SHOWN OTHERWISE, TYPICAL. WIRE LIGHTS IN PARALLEL NOT SERIES TO REDUCE VOLTAGE DROP.

REVISION	DESCRIPTION	DATE	DRAWN BY	DATE
REVISION Δ			AJM	10/27/23
REVISION Δ			DESIGNED BY AJM	DATE 10/27/23
REVISION Δ			CHECKED BY AJM	DATE 10/27/23
REVISION Δ			APPROVED BY BH	DATE 10/27/23



PUBLIC WORKS
ENGINEERING DIVISION

F 1/2 RD PARKWAY, PH 1
SITE LIGHTING PLAN

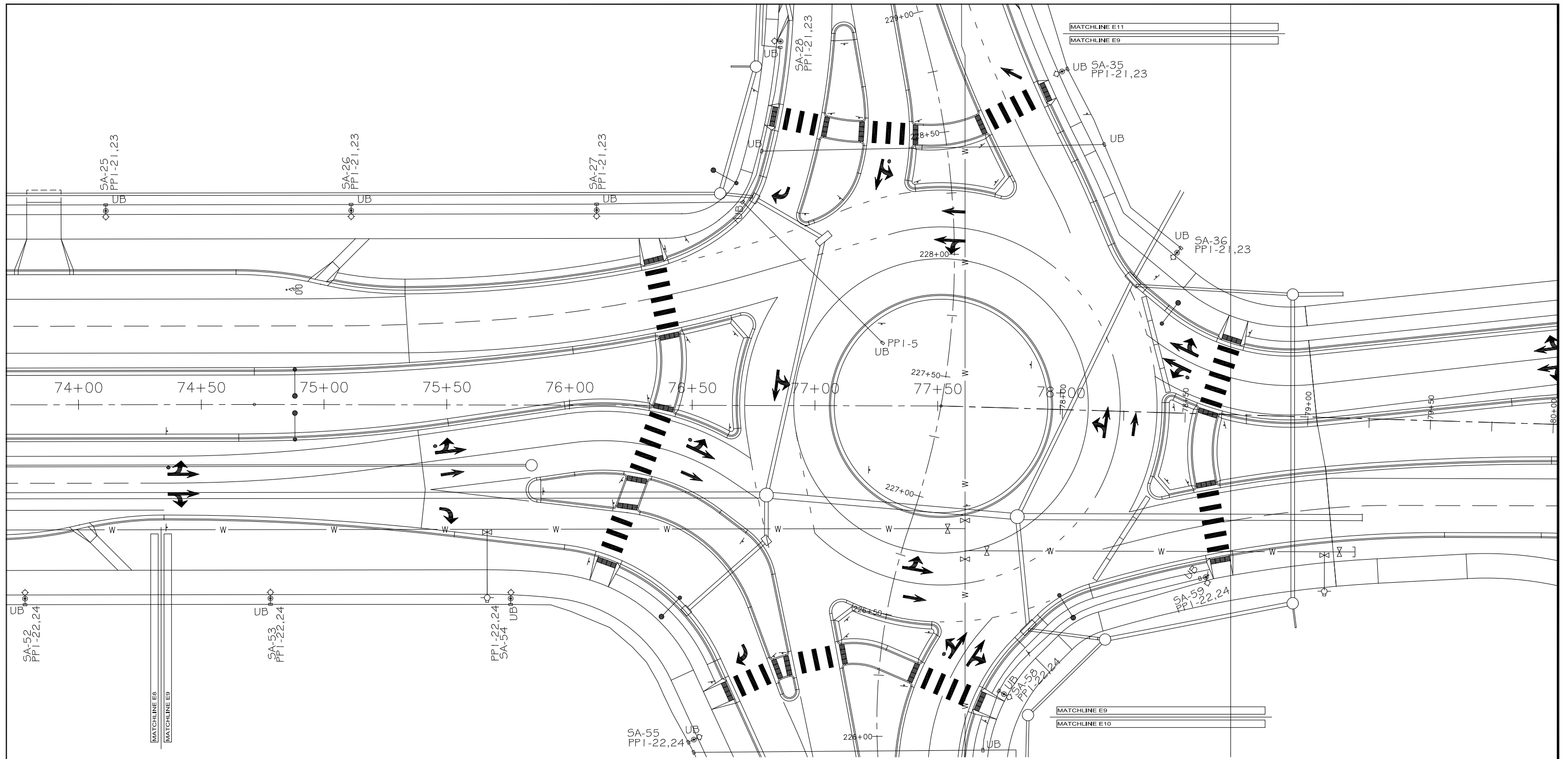
E8
of 16



Know what's below.
Call before you dig.

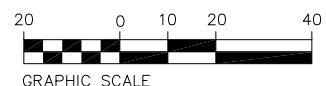


ACM CONSULTING
ELECTRICAL DESIGN, CONSULTING
ENGINEERS; PH: 970-245-7292
PO 3211 GRAND JCT., CO 81502
EMAIL: joelm@ACMengrs.com



LIGHTING/ELECTRICAL PLAN PHASE 1

SCALE: 1"=40'



GENERAL NOTES:

1. POWER CIRCUIT AS SHOWN ON DRAWING, TYPICAL.
2. LIGHT TO BE ORIENTED TO BE PERPENDICULAR TO SIDEWALK AND SHINE ON SIDEWALK, TYPICAL.
3. PROVIDE 2-#4 THWN + #8GND IN 2" PVC SCHEDULE 80 CONDUIT BETWEEN PULL BOXES UNLESS SHOWN OTHERWISE, TYPICAL. WIRE LIGHTS IN PARALLEL NOT SERIES TO REDUCE VOLTAGE DROP.



Know what's below.
Call before you dig.



ACM CONSULTING
ELECTRICAL DESIGN, CONSULTING
ENGINEERS; PH: 970-245-7292
PO 3211 GRAND JCT., CO 81502
EMAIL: joelm@ACMengrs.com

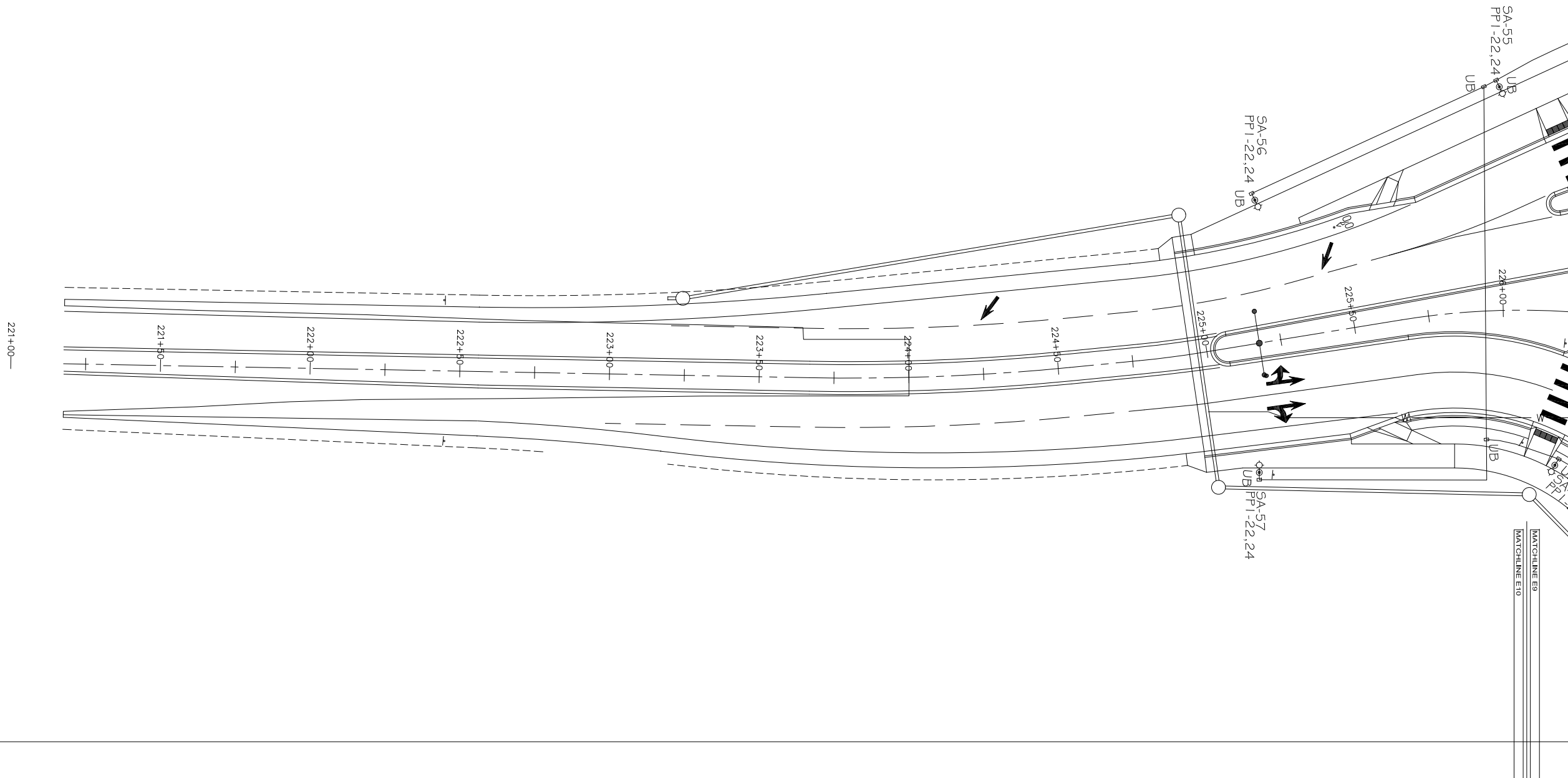
REVISION	DESCRIPTION	DATE	DRAWN BY	DATE
REVISION Δ			AJM	10/27/23
REVISION Δ			AJM	10/27/23
REVISION Δ			AJM	10/27/23
REVISION Δ			BH	10/27/23



PUBLIC WORKS
ENGINEERING DIVISION

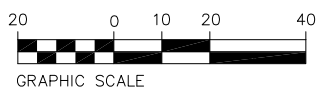
F 1/2 RD PARKWAY, PH 1
SITE LIGHTING PLAN

E9
of 16



LIGHTING/ELECTRICAL PLAN PHASE 1

SCALE: 1"=40'



GENERAL NOTES:

1. POWER CIRCUIT AS SHOWN ON DRAWING, TYPICAL.
2. LIGHT TO BE ORIENTED TO BE PERPENDICULAR TO SIDEWALK AND SHINE ON SIDEWALK, TYPICAL.
3. PROVIDE 2-#4 THWN + #8GND IN 2" PVC SCHEDULE 80 CONDUIT BETWEEN PULL BOXES UNLESS SHOWN OTHERWISE, TYPICAL. WIRE LIGHTS IN PARALLEL NOT SERIES TO REDUCE VOLTAGE DROP.



Know what's below.
Call before you dig.

ACM CONSULTING
ELECTRICAL DESIGN, CONSULTING
ENGINEERS; PH: 970-245-7292
PO 3211 GRAND JCT., CO 81502
EMAIL: joelm@ACMengrs.com

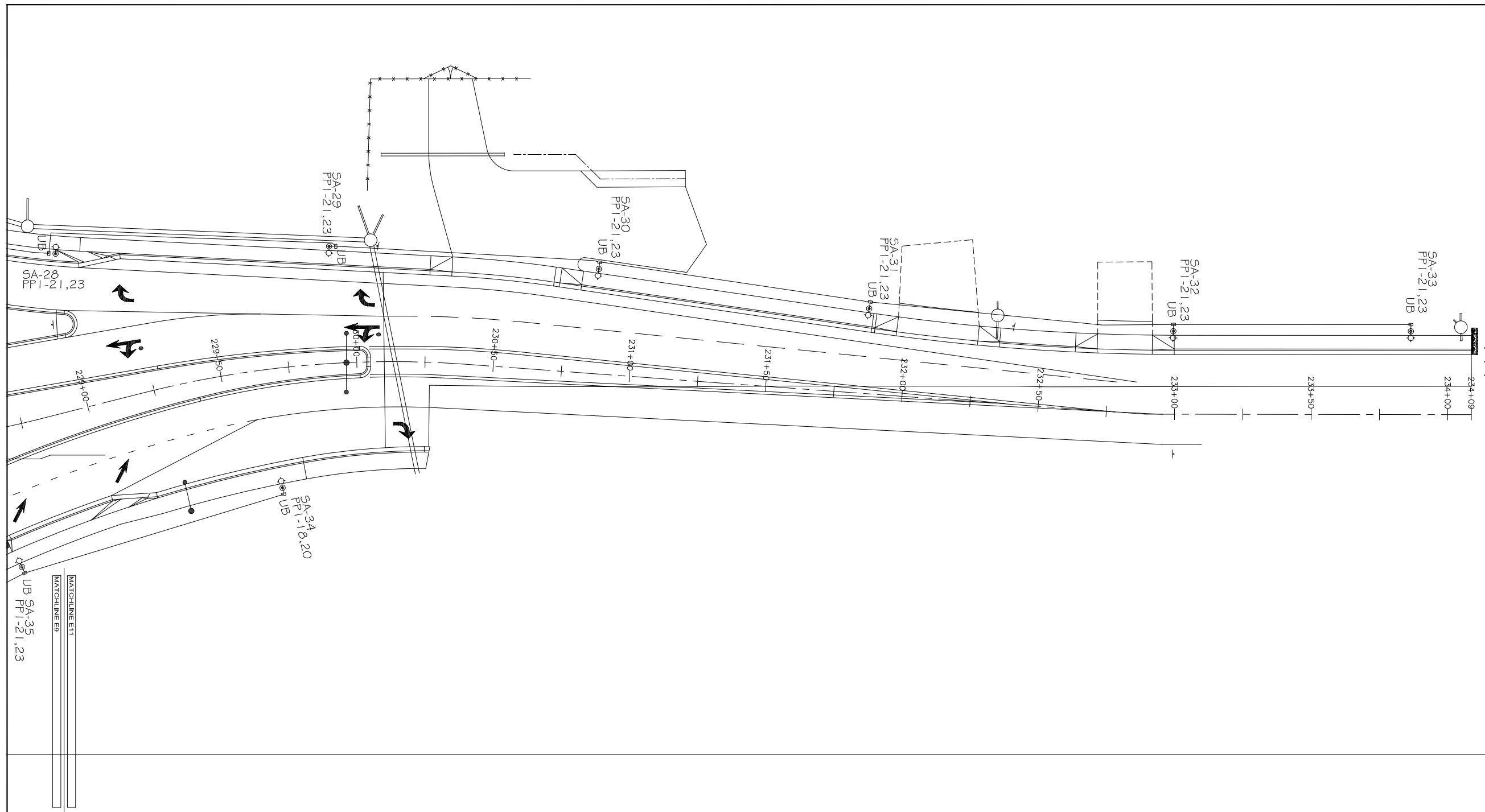
REVISION	DESCRIPTION	DATE	DRAWN BY	DATE
△			AJM	10/27/23
△			AJM	10/27/23
△			AJM	10/27/23
△			BH	10/27/23



PUBLIC WORKS
ENGINEERING DIVISION

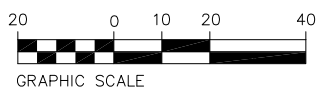
F 1/2 RD PARKWAY, PH 1
SITE LIGHTING PLAN

E10
of 16



LIGHTING/ELECTRICAL PLAN PHASE 1

SCALE: 1"=40'



GENERAL NOTES:

1. POWER CIRCUIT AS SHOWN ON DRAWING, TYPICAL.
2. LIGHT TO BE ORIENTED TO BE PERPENDICULAR TO SIDEWALK AND SHINE ON SIDEWALK, TYPICAL.
3. PROVIDE 2-#4 THWN + #8GND IN 2" PVC SCHEDULE 80 CONDUIT BETWEEN PULL BOXES UNLESS SHOWN OTHERWISE, TYPICAL. WIRE LIGHTS IN PARALLEL NOT SERIES TO REDUCE VOLTAGE DROP.

REVISION	DESCRIPTION	DATE	DRAWN BY	DATE
REVISION Δ			AJM	10/27/23
REVISION Δ			AJM	10/27/23
REVISION Δ			AJM	10/27/23
REVISION Δ			BH	10/27/23



PUBLIC WORKS
ENGINEERING DIVISION



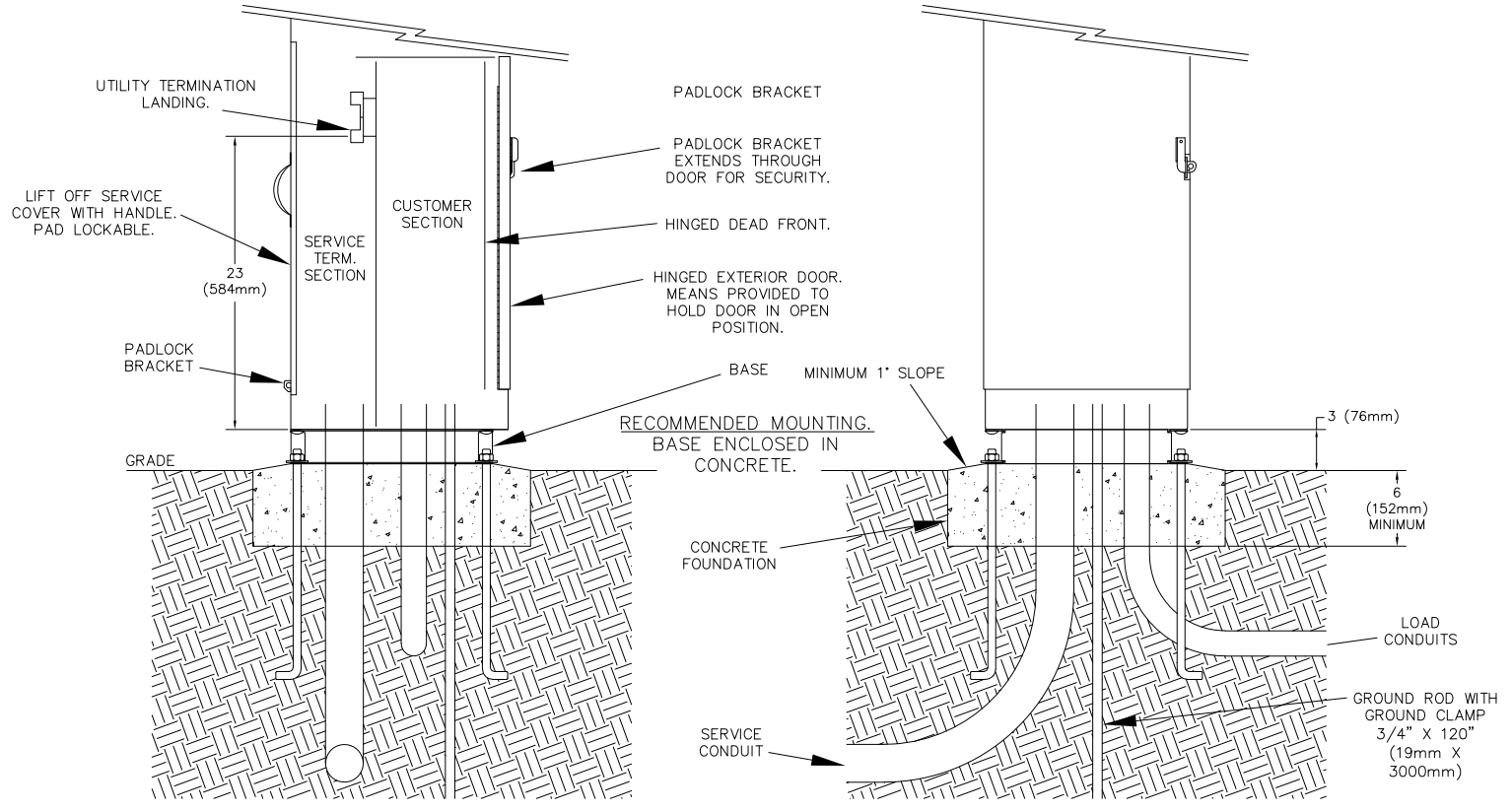
Know what's below.
Call before you dig.



ACM CONSULTING
ELECTRICAL DESIGN, CONSULTING
ENGINEERS; PH: 970-245-7292
PO 3211 GRAND JCT., CO 81502
EMAIL: joelm@ACMengrs.com

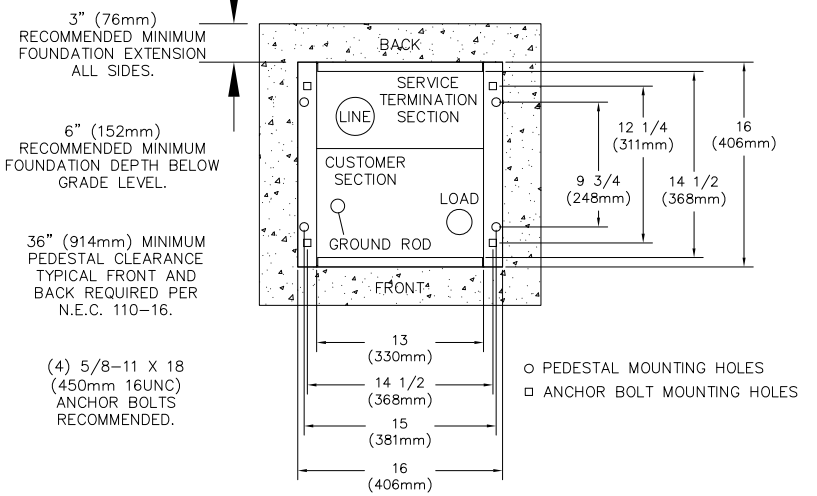
F 1/2 RD PARKWAY, PH 1
SITE LIGHTING PLAN

E11
of 16

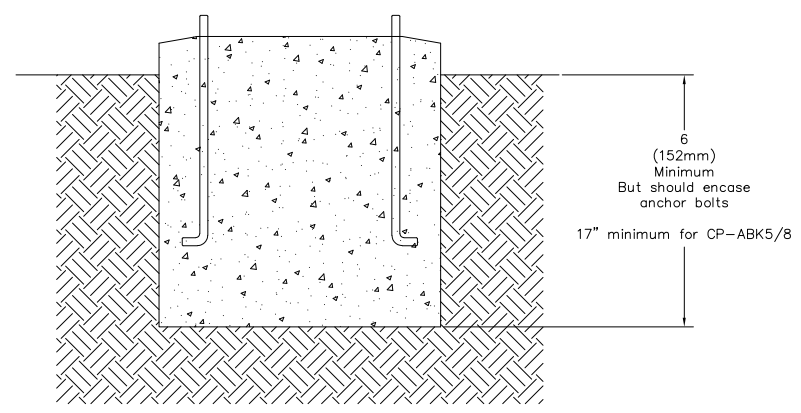


SIDE VIEW

FRONT VIEW



MOUNTING BASE DETAIL (TOP VIEW)



OPTIONAL MOUNTING NO BASE, MOUNT DIRECTLY ON FOUNDATION.

NOTES

1. DRAWING DEPICTS TYPICAL INSTALLATION, COORDINATE EXACT INSTALLATION FOR SPECIFIC MODEL WITH PROVIDER PRIOR TO PURCHASING. CONTROL CABINET SHALL BE U/L LISTED "INDUSTRIAL CONTROL PANEL" PER UL 508.
2. CONSTRUCTION SHALL BE NEMA 3R. 12 GA. A60 STEEL POWDER COATED MINT GREEN WITH PHOTO ELECTRIC CELL IN SERVICE CABINET. ELECTRICAL CONTRACTOR TO PROVIDE PHOTOCELL.
3. VOLTAGE RATINGS OF SERVICE EQUIPMENT SHALL CONFORM TO THE SERVICE VOLTAGES INDICATED ON THE PLANS.
4. SERVICE EQUIPMENT ENCLOSURE AND METERING EQUIPMENT SHALL MEET THE REQUIREMENTS OF THE SERVING UTILITY. WHEN THE SERVING UTILITY PROVIDES BOTH METERED AND UN-METERED CIRCUITS, A SEPARATE BUS SHALL BE PROVIDED FOR EACH CIRCUIT. THE METER AREA SHALL HAVE A SEALING, LOCKABLE, RAIN TIGHT COVER THAT CAN BE REMOVED WITHOUT THE USE OF TOOLS.
5. SERVICE EQUIPMENT SHALL BE FACTORY WIRED AND CONFORM TO NEMA STANDARDS.
6. THE EXTERIOR DOOR SHALL HAVE PROVISIONS FOR PADLOCKING. THE PADLOCK HOLE SHALL BE A MINIMUM DIAMETER OF 11mm.
7. ALL TERMINALS FOR INCOMING SERVICE CONDUCTORS SHALL BE COMPATIBLE WITH EITHER COPPER OR ALUMINUM CONDUCTORS SIZED TO SUIT THE CONDUCTORS SHOWN ON THE PLAN. TERMINAL LUGS SHALL BE COPPER OR TIN-PLATED ALUMINUM. SOLID NEUTRAL TERMINAL STRIP SHALL BE RATED 125A UNLESS OTHERWISE SPECIFIED AND FOR USE WITH COPPER OR ALUMINUM CONDUCTORS. THE TERMINAL SHOULD INCLUDE BUT NOT BE LIMITED TO:
 - A) INCOMING TERMINALS (LANDING LUGS)
 - B) NEUTRAL LUGS
 - C) SOLID NEUTRAL TERMINAL STRIP.
 - D) TERMINAL STRIPS FOR CONDUCTORS WITHIN THE ENCLOSURE.
8. AT LEAST 4 STANDARD SINGLE POLE 208V AND 1 SINGLE POLE 120 CIRCUIT BREAKER SPACES (20mm NOMINAL) SHALL BE PROVIDED FOR BRANCH CIRCUITS. CIRCUIT BREAKER INTERIORS SHALL BE COPPER. INTERIORS SHALL ACCEPT PLUG-IN OR CABLE-IN/ CABLE-OUT CIRCUIT BREAKERS.
9. PLUG-IN CIRCUIT BREAKERS MAY BE MOUNTED IN THE VERTICAL OR HORIZONTAL POSITION. CABLE-IN/ CABLE-OUT CIRCUIT BREAKERS SHALL BE MOUNTED IN THE VERTICAL POSITION.
10. FASTENERS ON THE EXTERIOR OF THE ENCLOSURE SHALL BE VANDAL RESISTANT AND SHALL NOT BE REMOVABLE FROM THE EXTERIOR. ALL NUTS, BOLTS, SCREWS, WASHERS, AND HINGES SHALL BE STAINLESS STEEL.
11. PHENOLIC NAME PLATES SHALL BE PROVIDED AS REQUIRED.
12. A PLASTIC COVERED WIRING DIAGRAM SHALL BE ATTACHED TO THE INSIDE OF THE FRONT DOOR.
13. FOUNDATION SHALL EXTEND 50mm MINIMUM BEYOND EDGE OF ENCLOSURE.

B TYPICAL POWER PEDESTAL/LIGHTING CONTROL CENTER (SPECIAL) PLAN
1 NOT TO SCALE



Know what's below.
Call before you dig.

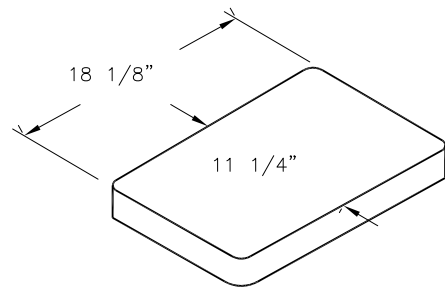
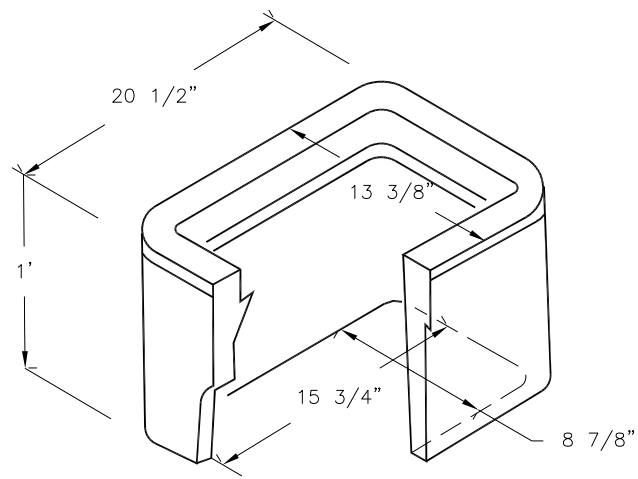
ACM CONSULTING
ELECTRICAL DESIGN, CONSULTING
ENGINEERS; PH: 970-245-7292
PO 3211 GRAND JCT., CO 81502
EMAIL: joelm@ACMengrs.com

REVISION	DESCRIPTION	DATE	DRAWN BY	DATE
REVISION Δ			AJM	10/27/23
REVISION Δ			AJM	10/27/23
REVISION Δ			AJM	10/27/23
REVISION Δ			BH	10/27/23



PUBLIC WORKS
ENGINEERING DIVISION

F 1/2 RD PARKWAY, PH 1
PEDESTAL DETAILS

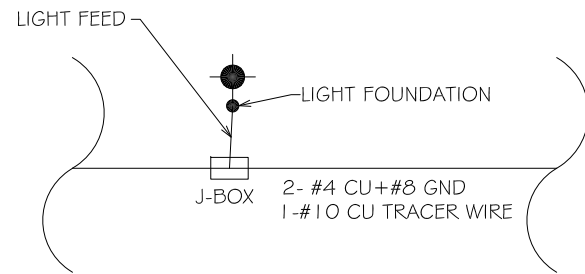


STREET LIGHT AND PEDESTRIAN LIGHT PULL BOX

DIMENSIONS SHOWN HERE FOR LAYOUT AND PLANNING PURPOSES. CONTRACTOR SHALL RELY ON MANUFACTURER DETAILS

- PULL BOXES, PULL BOX COVERS AND EXTENSIONS SHALL BE MADE OF FIBERGLASS REINFORCED POLYMER CONCRETE. PULL BOXES SHALL BE VERIFIED BY A 3RD PARTY NATIONALLY RECOGNIZED INDEPENDENT TESTING LABORATORY AS MEETING ALL TEST PROVISIONS OF THE LATEST ANSI/SCTE 77 SPECIFICATION FOR UNDERGROUND ENCLOSURE INTEGRITY, TIER 22 RATING. CERTIFICATION DOCUMENTS SHALL BE SUBMITTED WITH MATERIALS SUBMITTALS. THE PULL BOX SHALL HAVE A DETACHABLE COVER WITH A SKID RESISTANT SURFACE AND HAVE THE WORDS ELECTRICAL CAST INTO THE SURFACE. PAINTING THE WORDS SHALL NOT BE ACCEPTED. MARKINGS SHOWING THE TIER 22 RATING MUST BE LABELED OR STENCILED ON THE INSIDE AND OUTSIDE OF THE BOX AND ON THE UNDER SIDE OF THE COVER. THE COVER SHALL BE ATTACHED TO THE PULL BOX BODY BY MEANS OF A MINIMUM 3/8 - 7 UNIFIED NATIONAL COURSE (UNC) STAINLESS STEEL PENTA HEAD BOLTS AND SHALL HAVE TWO LIFT SLOTS TO AID IN THE REMOVAL OF THE LID.
- PULL SLOTS SHALL BE RATED FOR A MINIMUM PULL OUT OF 3,000 POUNDS. MAGNESIUM CHLORIDE TESTS SHOULD BE PERFORMED IN ACCORDANCE WITH THE LATEST ANSI/SCTE 77 SPECIFICATION FOR UNDERGROUND ENCLOSURE INTEGRITY, TIER 22 RATING.
- PROVIDE AT LEAST 6 INCHES OF PEA GRAVEL MEASURED FROM BOTTOM OF PULL BOX FOR DRAINAGE. PEA GRAVEL IS INCLUDED IN PULL BOX PAY ITEM.

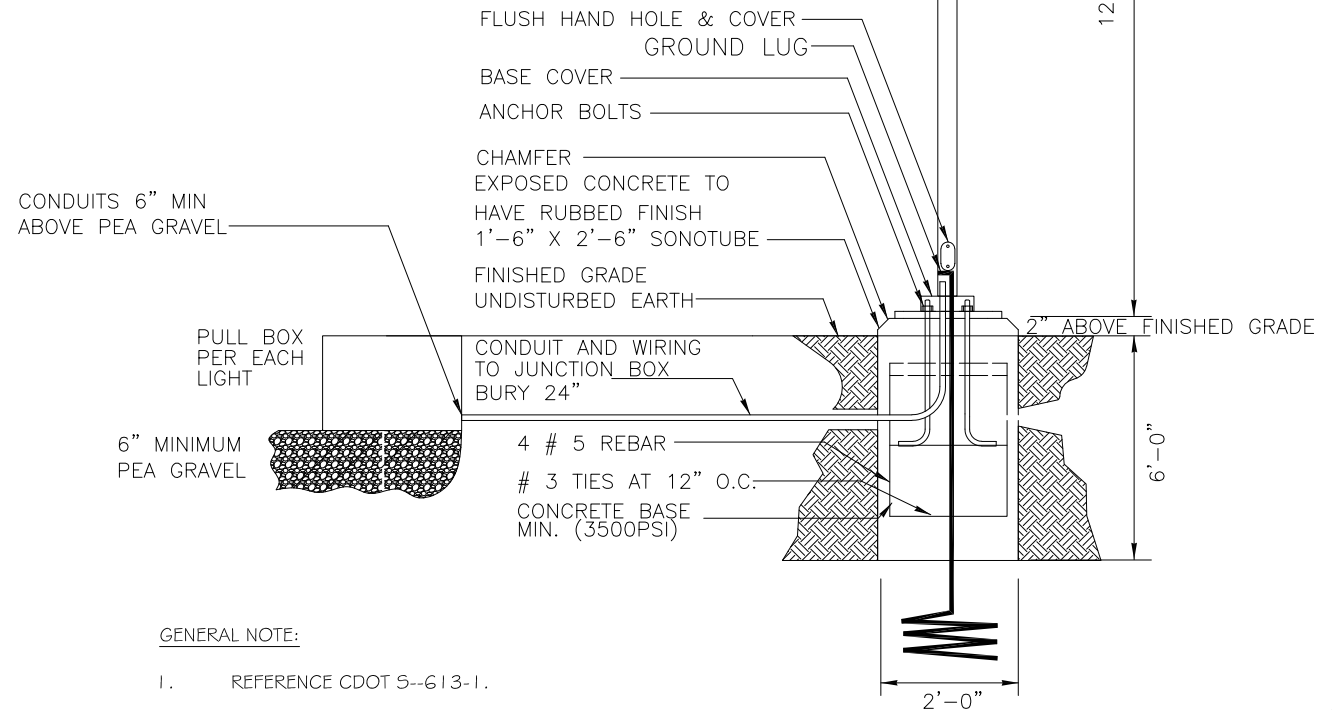
C UTILITY BOX DETAIL
1 NOT TO SCALE



C UTILITY BOX CONNECTION DETAIL
2 NOT TO SCALE

NOTES:

- ALL WIRING TO LIGHTS WILL BE WIRED IN PARALLEL NOT IN SERIES WITH #4 WIRE FEED TO REDUCE VOLTAGE DROP.
- PROVIDE #10 TRACER WIRE IN ALL NEW CONDUIT.



GENERAL NOTE:

- REFERENCE CDOT S--613-1.

C TYPICAL TYPE SA LIGHT DETAIL
3 NOT TO SCALE



Know what's below.
Call before you dig.

LUMINAIRE SCHEDULE					
TYPE	MANUFACTURER MODEL NUMBER	APPROVAL	VOLTAGE MOUNTING # OF LAMPS	BALLAST LAMPE TYPE LAMP CAT. #	DESCRIPTION
SA	STERNBERG LIGHTING 1A-1527FLED-SM-SV1-4ARC- 35(00)K-T2-F-MDL03-BK	OWNER REQUESTED	240 POLE 1	ELECTRONIC LED 66 W	PEDESTRIAN LUMINAIRE, ARM MOUNTED, LED, CUTOFF, ORDER POLE SO THAT LAMP HEIGHT IS 12' AFG MEASURED AT BOTTOM OF LUMINAIRE. ORDER WITH BRD ARM COLOR OF POLE AND ARM TO MATCH POLE.

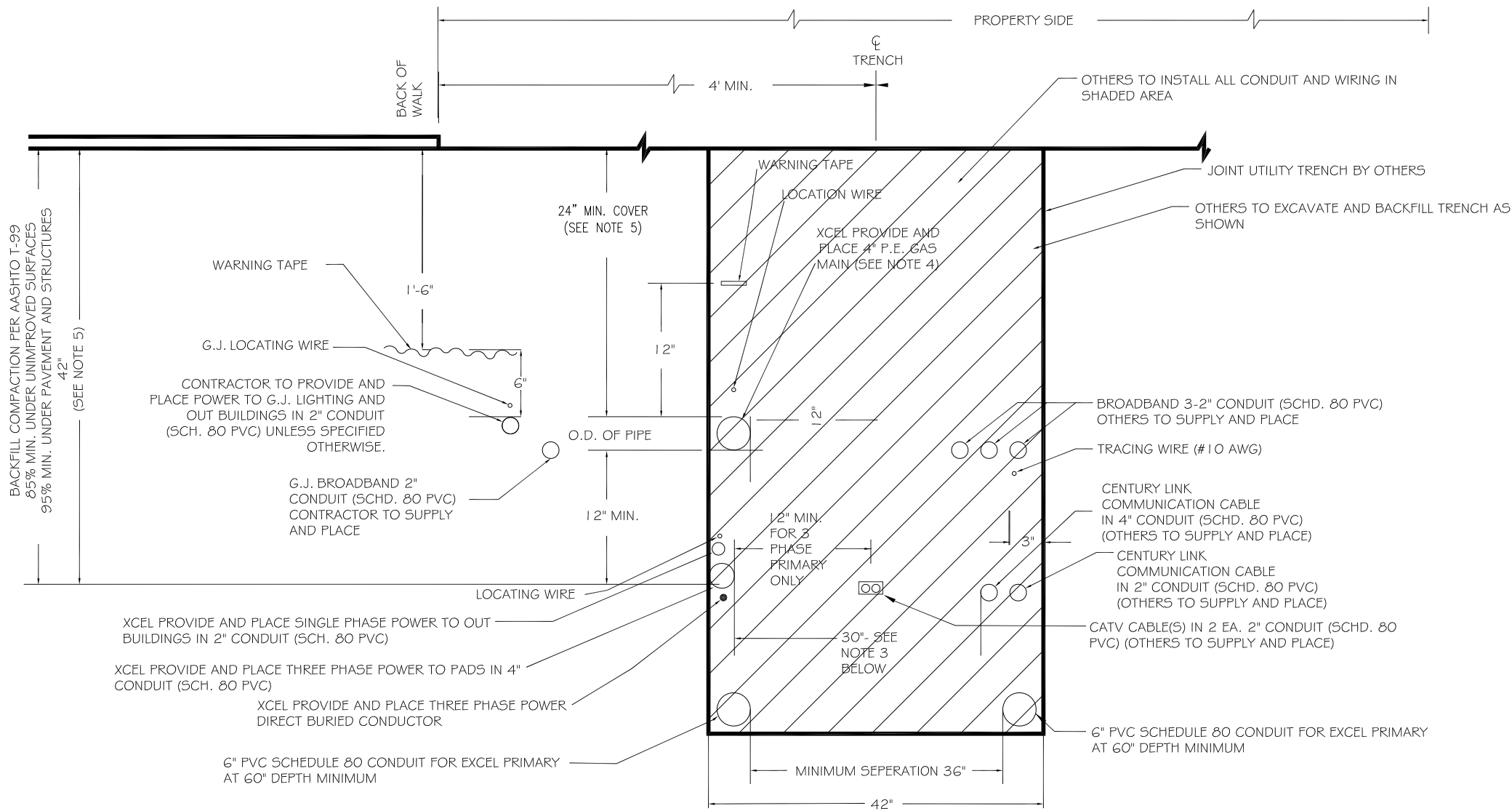
ACM CONSULTING
ELECTRICAL DESIGN, CONSULTING
ENGINEERS; PH: 970-245-7292
PO 3211 GRAND JCT., CO 81502
EMAIL: joelm@ACMengrs.com

REVISION	DESCRIPTION	DATE	DRAWN BY	DATE
REVISION Δ			AJM	10/27/23
REVISION Δ			AJM	10/27/23
REVISION Δ			AJM	10/27/23
REVISION Δ			BH	10/27/23



PUBLIC WORKS
ENGINEERING DIVISION

F 1/2 RD PARKWAY, PH 1
LIGHTING DETAILS



GENERAL NOTES:

1. FOR EASE OF CONSTRUCTION AND MAINTENANCE, PRIMARY CABLE SHOULD BE 12" TO 24" FROM COMMUNICATION CABLES. HOWEVER NESC REQUIREMENTS PERMIT "SUPPLY AND COMMUNICATION CABLES TO BE BURIED TOGETHER AT THE SAME DEPTH WITH NO DELIBERATE SEPARATIONS BETWEEN FACILITIES PROVIDED ALL PARTIES ARE IN AGREEMENT."
2. ONLY SINGLE PHASE SUPPLY CABLES CAN BE BURIED AT THE SAME DEPTH WITH NO DELIBERATE SEPARATION WITH COMMUNICATION CABLES. THREE PHASE CABLES MUST BE SEPARATED BY A MINIMUM OF 1 FOOT (REFERENCE NESC 354.D.3A).
3. 30" TRENCH WIDTH SHOULD BE USED WHEN ALL FOUR UTILITIES ARE INCLUDED.
4. STEEL GAS PIPE OR STEEL DUCT IS NOT ALLOWED FOR JOINT TRENCH CONSTRUCTION.
5. WHERE UNDERGROUND UTILITIES CROSS OR ENCROACH INTO CITY STREETS THEY SHALL BE INSTALLED TO A DEPTH PROVIDING 3' MINIMUM COVER BELOW FINISHED GRADE.
6. CITY CONTRACTOR TO INSTALL ONLY ELECTRICAL FOR PEDESTRIAN LIGHTING AND BROADBAND. ALL OTHER FRANCHISE UTILITIES TO BE INSTALLED BY XCEL ENERGY.

TYPICAL COMMON TRENCH DETAIL PROPERTY SIDE

NOT TO SCALE



Know what's below.
Call before you dig.



ACM CONSULTING
ELECTRICAL DESIGN, CONSULTING
ENGINEERS; PH: 970-245-7292
PO 3211 GRAND JCT., CO 81502
EMAIL: joelm@ACMengrs.com

REVISION	DESCRIPTION	DATE	DRAWN BY	DATE
REVISION Δ			AJM	10/27/23
REVISION Δ			AJM	10/27/23
REVISION Δ			AJM	10/27/23
REVISION Δ			BH	10/27/23

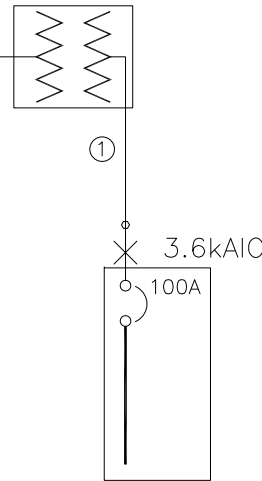


PUBLIC WORKS
ENGINEERING DIVISION

F 1/2 RD PARKWAY, PH 1
UTILITY DETAILS DETAILS

E14
of 16

NEW PAD MOUNTED
TRANSFORMER 50KVA
240/120 VOLT, 1PH
BY XCEL



NEW "PP1" 100A MCB MILBANK
PEDESTAL CP3B51C1HA22CSXCSL12,
12 UNSWITCHED/12 SWITCHED CKTS
240/120V 1PH, 3W
22 kAIC

① 1 SET(S)[2" PVC
SCHED. 80
(3#3(CU,THWN)+1#8(CU)GND)]

A
1 ONE-LINE DIAGRAM
NOT TO SCALE

GENERAL NOTES:

1. IN AS MUCH AS DESIGN REQUIRES THAT CERTAIN ASSUMPTIONS BE MADE REGARDING EXISTING CONDITIONS, AND BECAUSE SOME OF THESE ASSUMPTIONS CANNOT BE VERIFIED. FIELD COORDINATION DURING CONSTRUCTION SERVICES IS IMPERATIVE. CONTRACTORS BIDDING THIS WORK MUST MAKE REASONABLE ALLOWANCES FOR UNFORESEEN CONTINGENCIES.
2. THE SERVING ELECTRICAL ASSOCIATION SHALL ADVISE THE OWNER/ENGINEER PRIOR TO SERVICE MODIFICATION REQUIRING COST TO THE OWNER.
3. REFERENCE CIVIL, LANDSCAPE AND IRRIGATION DRAWING PLANS FOR COORDINATION AND LOCATION OF ALL UNDER GROUND SYSTEMS.
4. ALL WORK SHALL BE COORDINATED WITH OTHER TRADES AS REQUIRED: REFERENCE CIVIL LANDSCAPE AND IRRIGATION DRAWINGS.
5. ALL WIRING IS SHOWN DIAGRAMMATICALLY ON DRAWINGS, FIELD VERIFY ALL CONDITIONS PRIOR TO ROUGH-IN.
6. ALL ELECTRICAL WORK SHALL COMPLY WITH THE LATEST EDITION OF NATIONAL ELECTRICAL CODE AND ALL APPLICABLE LOCAL CODES.
7. ALL WIRE TO LIGHTING TO BE #4 UNLESS NOTED OTHERWISE.
8. CONDUCTOR COUNT IS SHOWN FOR REFERENCE ONLY. CONTRACTOR SHALL ENSURE THAT ANY AND ALL DEVICES AND EQUIPMENT ARE CIRCUITED PROPERLY. CONTRACTOR SHALL ENSURE THAT NO EQUIPMENT OR DEVICES ARE COMBINED OTHER THAN WHAT IS DEPICTED.
9. FIELD VERIFY ALL DIMENSIONS, DO NOT SCALE DRAWINGS.
10. COORDINATE INSTALLATION OF METER AND ELECTRICAL REQUIREMENTS WITH XCEL ENERGY.
11. NEW PEDESTAL MUST MEET ALL XCEL ENERGY REQUIREMENTS I.E. COLD SEQUENCE PADLOCK SLIP LATCH ON METER COVER, HOLD OPEN BAR ON METER HOOD.
12. COORDINATE WIRING TO SUMP PUMPS AND CONTROLLER WITH PROVIDERS PRIOR TO ROUGH-IN.



Know what's below.
Call before you dig.



ACM CONSULTING
ELECTRICAL DESIGN, CONSULTING
ENGINEERS; PH: 970-245-7292
PO 3211 GRAND JCT., CO 81502
EMAIL: joelm@ACMengrs.com

REVISION	DESCRIPTION	DATE	DRAWN BY	DATE
△			AJM	10/27/23
△			AJM	10/27/23
△			AJM	10/27/23
△			BH	10/27/23



PUBLIC WORKS
ENGINEERING DIVISION

F 1/2 RD PARKWAY, PH 1
ONE-LINE DIAGRAMS

E15
of 16

PANEL: PP1 DC DEVICE TYPE: Breaker ENCLOSURE: NEMA 3R MAINS(A): BKR CONTINUOUS(A): 100
 LOCATION: DEVICE FAMILY: Bolt On MOUNTING: Free Standing WIRING: Single-Phase 3-Wire BUS SC RATING(A): 12000
 FED FROM: BUS-Sec VOLTAGE: 240/120 FAULT CURRENT(A): 3597
 INCIDENT ENERGY: 2.52 Cal/cm2 @18.00(in) BOUNDARY: 28.60(in)

FLAG NOTES:

- ① CIRCUITS 1-16 ARE UNSWITCHED, CIRCUITS 17 TO 32 ARE SWITCHED AND CONTROLLED WITH THE CONTRACTOR SUPPLIED PHOTOCELL, TYPICAL.
- ② ROUND ABOUT RECEPTACLE CIRCUITS TO BE TERMINATED IN J-BOX FOR FUTURE. COORDINATE EXACT LOCATION OF J-BOX WITH OWNER PRIOR TO TRENCHING.

DC AMPS P	NOTES	DESCRIPTION	DEMAND CODE	VA	CKT	PHASE A	LOADS B	VA C	CKT	VA	DEMAND CODE	DESCRIPTION	NOTES	DC AMPS P
100 2		MAIN	GENERAL	0	1		180		2	180	GENERAL	CONTROL POWER	①	15 1
20 1		RECEPTACLE-RBT	GENERAL	960	5		960	0	4					
20 1		RECEPTACLE-RBT	GENERAL	960	7			960	6	0	SPARE	SPARE		20 1
					9		0	0	8	0	SPARE	SPARE		20 1
					11				10	0	SPARE	SPARE		20 1
20 2		LTS P1-LTS-NW	NONE	660	17		1050		12	390	NONE	LTS P1-LTS SW		20 2
20 2		LTS P1-LTS-NE	NONE	660	19		1050		14	390	NONE	LTS P1-LTS-SE		20 2
				420	21		720		16	300	NONE	LTS P1-LTS-SE		20 2
				420	23		720		18	300				20 2
ALL CONNECTED		KVA	3P AVE	AMPS	* PHASE	TOTALS	VA		AMPS		BUS TOTALS	KVA		
TOTAL CONNECTED		5.37		12.9	* A-N		2767.8		23.1		CONNECTED	6.54		
TOTAL DEMAND		5.37		12.9	* B-N		2602.5		21.7		DEMAND	6.54		
TOTAL DESIGN		5.37		12.9	* C-N		0.0		0.0		DESIGN	6.54		



Know what's below.
Call before you dig.

ACM CONSULTING
 ELECTRICAL DESIGN, CONSULTING
 ENGINEERS; PH: 970-245-7292
 PO 3211 GRAND JCT., CO 81502
 EMAIL: joelm@ACMengrs.com

REVISION Δ	DESCRIPTION	DATE	DRAWN BY	AJM	DATE	10/27/23
REVISION Δ			DESIGNED BY	AJM	DATE	10/27/23
REVISION Δ			CHECKED BY	AJM	DATE	10/27/23
REVISION Δ			APPROVED BY	BH	DATE	10/27/23



PUBLIC WORKS
ENGINEERING DIVISION

F 1/2 RD PARKWAY, PH 1
PANEL SCHEDULES