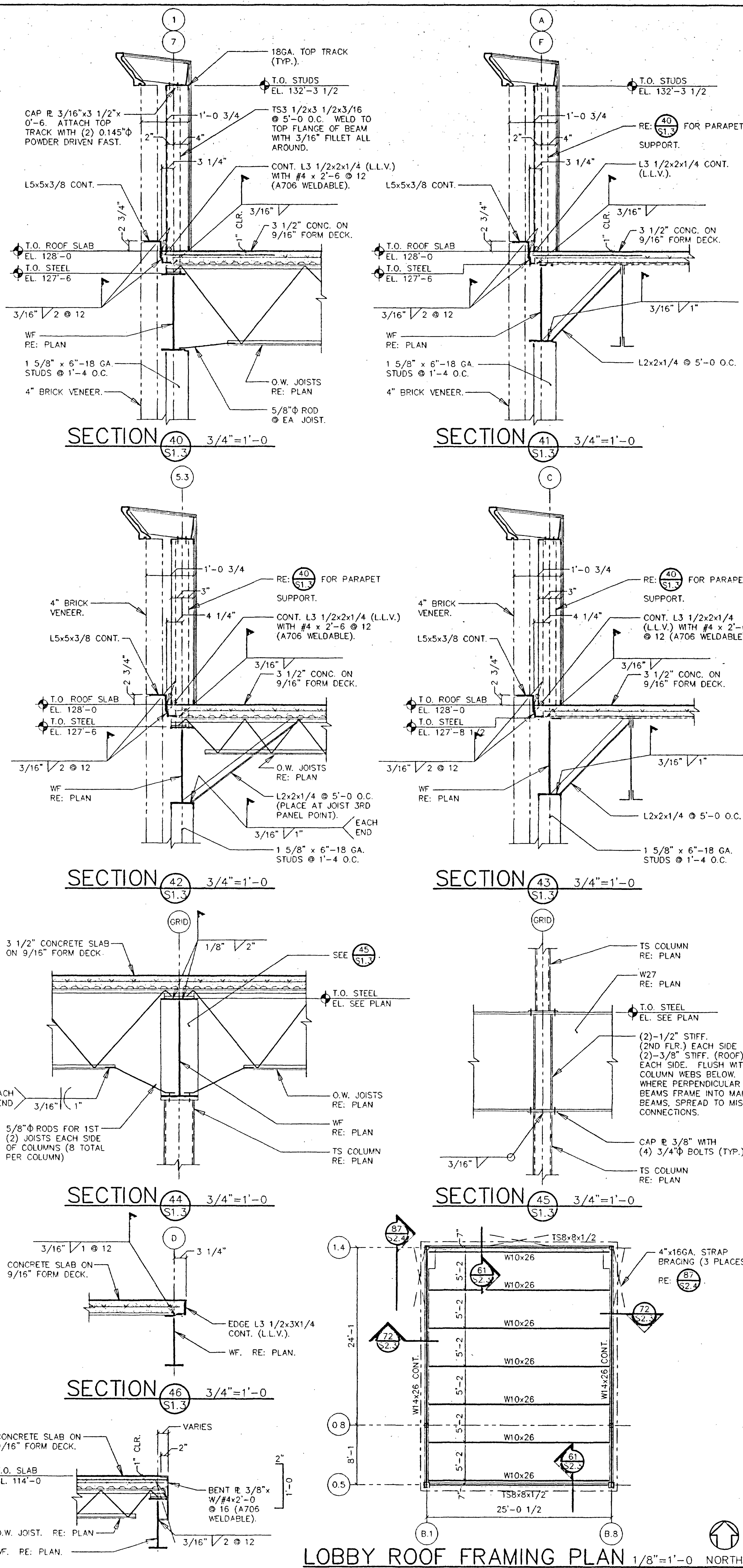


**ROOF FRAMING PLAN**  
1/8"=1'-0"

1. T.O. SLAB EL. 128'-0"
2. 2ND FLOOR TO BE 3 1/2" CONC. SLAB ON 9/16" x 28 GA. FORM DECK. REINFORCE W/ 6X6-W21W21 W.W.F. PLACE IN MIDDLE OF SLAB.
3. T.O. STEEL EL. 127'-6" (TYP. U.N.O.)
4. PROVIDE BRIDGING IN ACCORDANCE WITH S.J.I. SPECIFICATIONS.
5. JOIST MANUFACTURER TO PROVIDE FOR AN ADDITIONAL POINT LOAD = 175LB.
6. ROOF BEAM TO BE UTILIZED AS ELEVATOR HOIST BEAM (EN. LOAD CAPACITY = 5K).
7. PROVIDE (1) 1 5/8" x 6" - 18GA. STUDS AT EACH ELEVATOR SIDE RAIL. STUDS TO BE CONTINUOUS FROM 2ND FLOOR TO BOTTOM OF BEAM FLANGE AT SKYLIGHT. ATTACH TOP AND BOTTOM TRACK WITH (3) 0.145" POWDER DRIVEN FASTENERS EACH SIDE OF STUDS.



**LOBBY ROOF FRAMING PLAN**  
1/8"=1'-0" NORTH

**Fawhaus Architects, Inc.**  
Grand Junction, CO 81501  
15 S. 3rd Street, Suite 400 • Fax: (970) 245-1957 • Email: fawhaus@fawhaus.com  
970.245.2522

**CITY of GRAND JUNCTION  
CITY HALL**

**ROOF FRAMING PLAN**

Project No: 89220  
Date: 09/17/89  
Drawn by: KDN, LLA  
Revisions:

Sheet No. **S1.3**

09104158.tif