

ORF Trail Advancement Sub Committee 8/14/23

Summary since initiation of Committee until
today's date

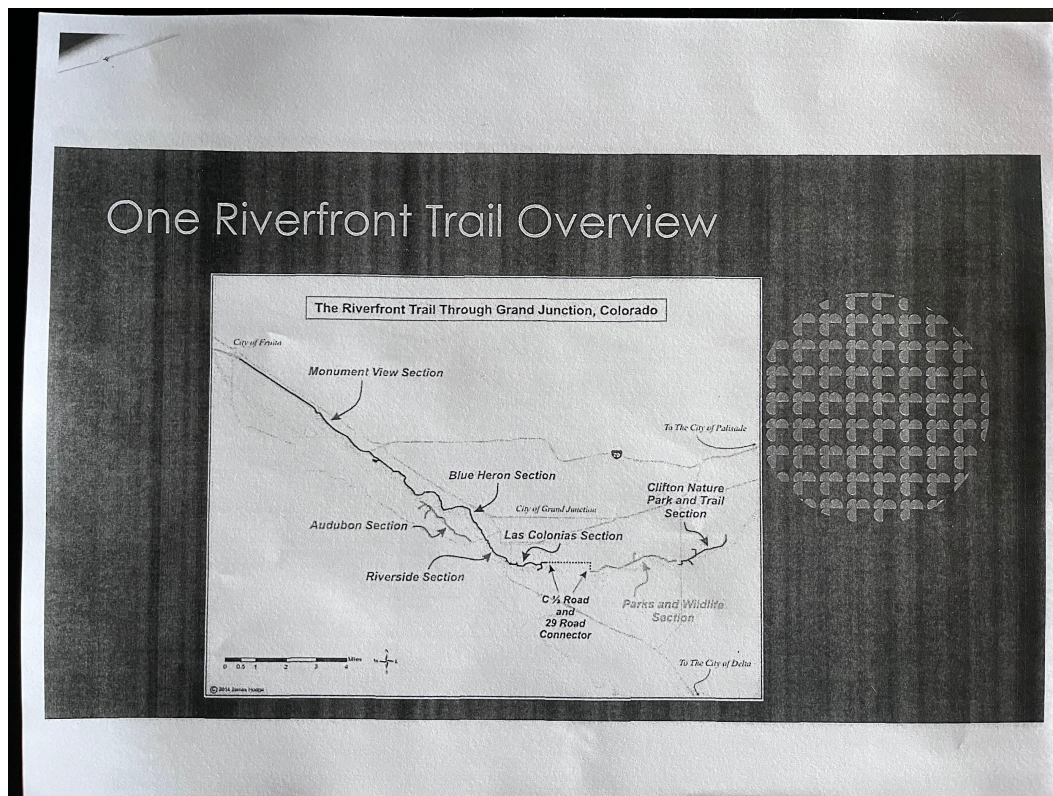
Final report of Committee chair

Members: Fred Barbero-chair
David Varner
Joel Sholtes
Rondo Buescheler

The Focus of this group is to continue the effort to complete the Riverfront Trail from Loma to Palisade. At this point completion has been accomplished from Loma through Fruita, through Mesa County (Monument View Section) through Grand Junction and to 33 ½ Road (Clifton). The current effort is to continue to push eastward to Riverbend Park in Palisade.

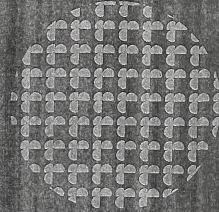
Approximately 1 ½ years ago a new effort to develop the unincorporated community of Clifton was initiated. This effort has resulted in a Mesa County associated group called the Clifton Community Commons. Their effort involves developing land in Clifton through which runs the Riverfront Trail. As a result the Trail advancement Committee was invited to join the

group working on developing the Clifton Community Commons effort. David Varner and myself have been attending their meetings. Thea Chase, a member of the Palisade Town Council and an ex-officio member of ORF has been involved in a peripheral manner. Also involved in the Clifton effort is the Mesa County Regional Transportation Office (RTPO). That group (RTPO) is currently working on securing funding for a professional study to determine viable options (routes) to advance the RFT (Riverfront Trail) from 33 1/2 Road (where the trail currently has reached) to Riverbend Park in Palisade. Members of ORF Trail advancement subcommittee continue to meet with the Clifton/Mesa County group in this effort.

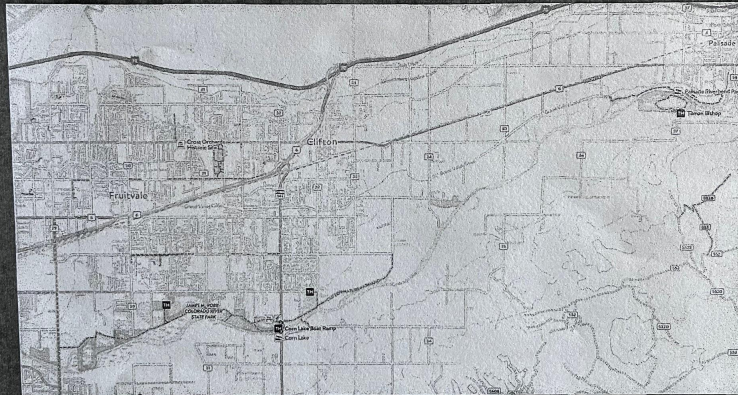


Project Partners

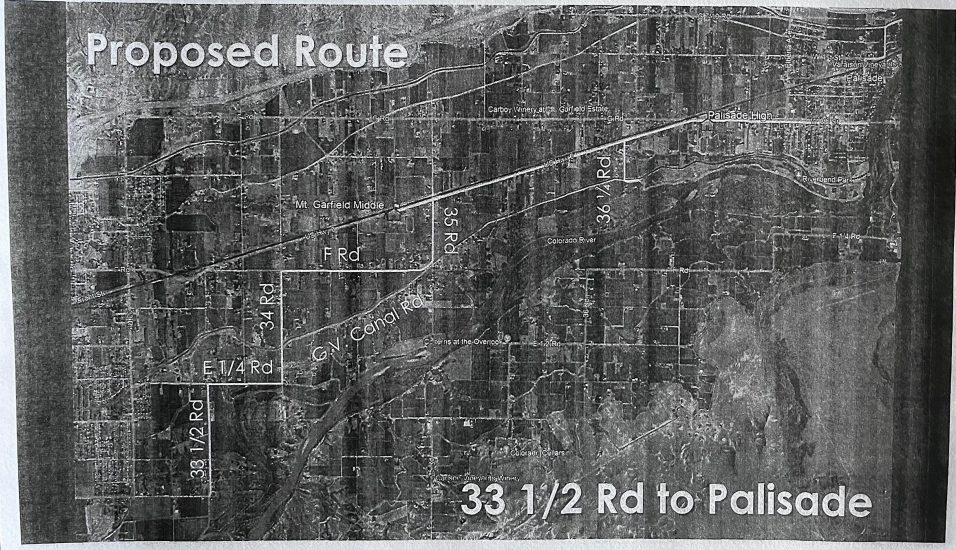
- ▶ One Riverfront
- ▶ Town of Palisade (Thea Chase)
- ▶ Mesa County (Ross Mittleman + Public Works)
- ▶ Clifton Transformation Initiative (Sarah Johnson)
- ▶ CDOT
- ▶ RTPO (?)
- ▶ D51 – Safe Routes to Schools
- ▶ Grand Valley Outdoor Recreation Coalition
- ▶ Others?



The Palisade Gap



Proposed Route



33 1/2 Rd to Palisade