

GENERAL NOTES:

1. THIS PROJECT WILL BE BID FOR THE INSTALLATION OF THE ELECTRIC SERVICE AND EQUIPMENT FOR THE NEW RECYCLING FACILITY .
2. THIS PROJECT CONSISTS OF WORK TO INSTALL ALL WIRING, CONDUIT, PULL BOXES, NEW METER, LIGHTING, AND POWER PANEL WITH SURGE PROTECTION LEVITON #32120 DY3 OR EQUAL. REFERENCE SUMMARY OF QUANTITIES.
3. ALL ELECTRICAL CONDUIT BELOW GROUND SHALL BE SCHEDULE 80 PVC UNLESS NOTED OTHERWISE, TYPICAL.
4. ALL CONDUIT TO LIGHTING, RECEPTACLES AND CONVEYORS TO BE 3/4" INTERMEDIATE METAL CONDUIT(IMC) UNLESS NOTED OTHERWISE.
5. UNLESS OTHERWISE NOTED, THE WORK DESCRIBED ON THE PLANS SHALL INCLUDE PROVIDING ALL LABOR AND MATERIALS NECESSARY FOR A COMPLETE AND OPERATIONAL ELECTRICAL SYSTEM. FURNISH ALL REQUIRED ITEMS WHETHER SUCH ARE SPECIFICALLY SHOWN OR NOT.
6. INFORMATION ON THE DRAWINGS HAS BEEN ASCERTAINED FROM EXISTING DRAWINGS AND FIELD OBSERVATIONS. THIS INFORMATION IS AS ACCURATE AS CONDITIONS WOULD ALLOW. PRIOR TO SUBMITTING BIDS, THE ELECTRICAL CONTRACTOR SHALL VISIT THE SITE TO VERIFY EXISTING ELECTRICAL EQUIPMENT AND OBSERVE ANY CONDITIONS AND DIFFICULTIES THAT WILL AFFECT THE EXECUTION OF THE WORK. NOTIFY THE ARCHITECT/ENGINEER OF ANY EXISTING CONDITIONS WHICH MODIFY THE SCOPE OF WORK AS SHOWN ON THE CONSTRUCTION DOCUMENTS. SUBMISSION OF A BID PROPOSAL WILL BE CONSTRUED AS EVIDENCE THAT SUCH AN EXAMINATION HAS BEEN MADE AND LATER CLAIMS FOR MOBILIZATION, LABOR, EQUIPMENT, AND/OR MATERIALS REQUIRED BECAUSE OF DIFFICULTIES ENCOUNTERED WILL NOT BE RECOGNIZED.
7. BEFORE SUBMITTING THE BID ELECTRICAL CONTRACTOR SHALL VISIT AND EXAMINE THE PREMISES AND/OR JOB SITE SO AS TO ASCERTAIN THE EXISTING CONDITIONS IN WHICH THE CONTRACTOR WILL BE OBLIGED TO OPERATE IN PERFORMING HIS PART OF THE CONTRACT TO ANTICIPATE ANY POSSIBLE SPACE RESTRICTIONS OR CONSTRAINTS THAT COULD AFFECT THE TIMELY COMPLETION OF THE ELECTRICAL WORK IN ACCORDANCE WITH THE INTENT OF THE SPECIFICATIONS AND DRAWINGS. THE ELECTRICAL CONTRACTOR SHALL REPORT TO THE THE PROJECT ENGINEER OR GENERAL CONTRACTOR ANY CONDITIONS THAT MIGHT PREVENT THE SPECIFIED ELECTRICAL WORK FROM BEING PERFORMED IN THE MANNER INTENDED. NO CONSIDERATION OR ALLOWANCE WILL BE GRANTED TO THE ELECTRICAL CONTRACTOR FOR FAILURE TO VISIT THE PROJECT SITE, OR FOR ANY ALLEGED MISUNDERSTANDING OF THE MATERIALS TO BE FURNISHED OR WORK TO BE DONE.
8. THE ELECTRICAL CONTRACTOR SHALL EXAMINE THE DRAWINGS OF ALL TRADES WHOSE WORK RELATES TO OR IS DEPENDENT ON ELECTRICAL WORK TO BECOME FULLY INFORMED OF THE EXTENT AND CHARACTER OF THEIR SPECIFIED WORK AND BE ABLE TO COORDINATE WITH OTHER TRADES WHILE AVOIDING POSSIBLE INTERFERENCE WITH THE ELECTRICAL WORK.
9. ELECTRICAL CONTRACTOR SHALL FULLY COORDINATE WITH OWNER REPRESENTATIVES. ALL ELECTRICAL WORK PERFORMED UNDER THIS CONTRACT SHALL CONFORM WITH LATEST EDITIONS OF THE NATIONAL ELECTRICAL CODE, UNIFORM BUILDING CODE OR INTERNATIONAL BUILDING CODE, LOCAL BUILDING AND FIRE DEPARTMENT REQUIREMENTS. PERFORM WORK IN ACCORDANCE WITH REQUIREMENTS OF OWNER REPRESENTATIVE.
10. ELECTRICAL CONTRACTOR SHALL MAINTAIN ON THE JOB AN UP TO DATE SET OF WORKING DRAWINGS, MARKED UP TO SHOW ELECTRICAL SYSTEMS AS INSTALLED. PROVIDE TENANT REPRESENTATIVES WITH ONE SET OF REPRODUCIBLE WITH "AS BUILT" PROJECT RECORD INFORMATION CLEARLY INDICATED. ELECTRICAL CONTRACTOR SHALL OBTAIN AND PAY FOR ALL LOCAL FEES, PERMITS, AND SERVICES OF INSPECTION AUTHORITIES REQUIRED BY ELECTRICAL WORK FOR THIS ELECTRICAL CONSTRUCTION.
11. COORDINATE EXACT EQUIPMENT LOCATIONS WITH OWNER/ARCHITECT PRIOR TO ROUGH-IN. COORDINATE THE WIRING DEVICE LOCATIONS WITH THE ARCHITECTURAL ELEVATIONS, CASEWORK SHOP DRAWINGS, AND EQUIPMENT INSTALLATION DRAWINGS. COORDINATE THE LOCATION OF THE MECHANICAL EQUIPMENT WITH THE MECHANICAL PLANS AND THE MECHANICAL CONTRACTOR PRIOR TO ROUGH-IN. COORDINATE THE LOCATION OF THE LUMINARIES WITH THE ARCHITECTURAL CEILING PLAN.
12. REFERENCE ARCHITECTURAL, STRUCTURAL AND MECHANICAL DRAWINGS. ALL WORK TO BE COORDINATED WITH OTHER TRADES AS REQUIRED.
13. ELECTRICAL CONTRACTOR SHALL VERIFY BRANCH CIRCUIT WIRING LENGTHS AND PROVIDE CONDUCTOR SIZED TO PREVENT VOLTAGE DROP EXCEEDING 3% AT THE FARTHEST OUTLET, AND ENSURE THE MAXIMUM VOLTAGE DROP ON BOTH FEEDERS AND BRANCH CIRCUITS TO THE FARTHEST POINT DOES NOT EXCEED 5%.
14. ELECTRIC UTILITY TO ADVISE OWNER AND/OR ENGINEER, PRIOR TO SERVICE MODIFICATION REQUIRING COST TO THE OWNER.
15. MINIMUM WORKING CLEARANCES PER THE LATEST EDITION OF THE NATIONAL ELECTRICAL CODE SHALL BE PROVIDED AROUND AND IN FRONT OF ALL ELECTRICAL EQUIPMENT.
16. ELECTRICAL CONTRACTOR TO PROVIDE TEMPORARY POWER AND WIRING FOR THE PERFORMANCE OF ALL TRADES FOR THE ENTIRE PERIOD OF CONSTRUCTION AND SHALL REMOVE ALL TEMPORARY WIRING AT THE COMPLETION OF CONSTRUCTION.
17. ALL JUNCTION BOX COVERS SHALL BE INDELIBLY LABELED WITH PANEL DESIGNATION AND BRANCH CIRCUIT NUMBER OF EACH WIRE WITHIN THE JUNCTION BOX. ALL HOME RUNS SHALL BE IN IMC CONDUIT, TYPICAL.

ELECTRICAL LEGEND

OUTLETS MH = 1'-6" TO CENTER

GFCI=GROUND FAULT CIRCUIT INTERRUPT

DUPLEX RECEPTACLE
 U = USB RECEPTACLE COMBINATION
 WP = WEATHERPROOF
 EM = EMERGENCY CIRCUIT

SWITCHES MH = 3'-10" TO CENTER

SINGLE POLE
 b = SWITCH DESIGNATION
 2 = TWO POLE
 3 = THREE POLE

LIGHTS

2X4 HIGH BAY LED

SERVICE ENTRANCE

METER
 MH = 5'-0" TO TOP

PAD MOUNTED TRANSFORMER

MAIN DISTRIBUTION CENTER

EQUIPMENT

FUSED DISCONNECT
 MH = 4'-6" TO TOP

UNFUSED DISCONNECT
 MH = 4'-6" TO TOP

MOTOR

PANELBOARD
 L1A L1A = DESIGNATION



Tabulation of Approximate Quantities					
Item No.	Ref. No.	Construction Note Description	Quantity	Unit	NOTES
1		2 Inch Electrical Conduit (Plastic)	35	LF	
2		Wiring	1	LS	
3		3/4" INTERMEDIATE METALLIC CONDUIT	300	LF	
4		200 AMP 3PH NEMA 3R POWER PANEL, 208/120V WITH BREAKERS AND SPD AS SHOWN IN PANEL SCHEDULE	1	EA	
5		TYPE A HIGH BAY LIGHT	6	EA	1
6		TYPE B WALL PACK	2	EA	1
SUMMARY NOTES:					
1. COORDINATE MOUNTING WITH MANUFACTURER PRIOR TO ORDERING.					

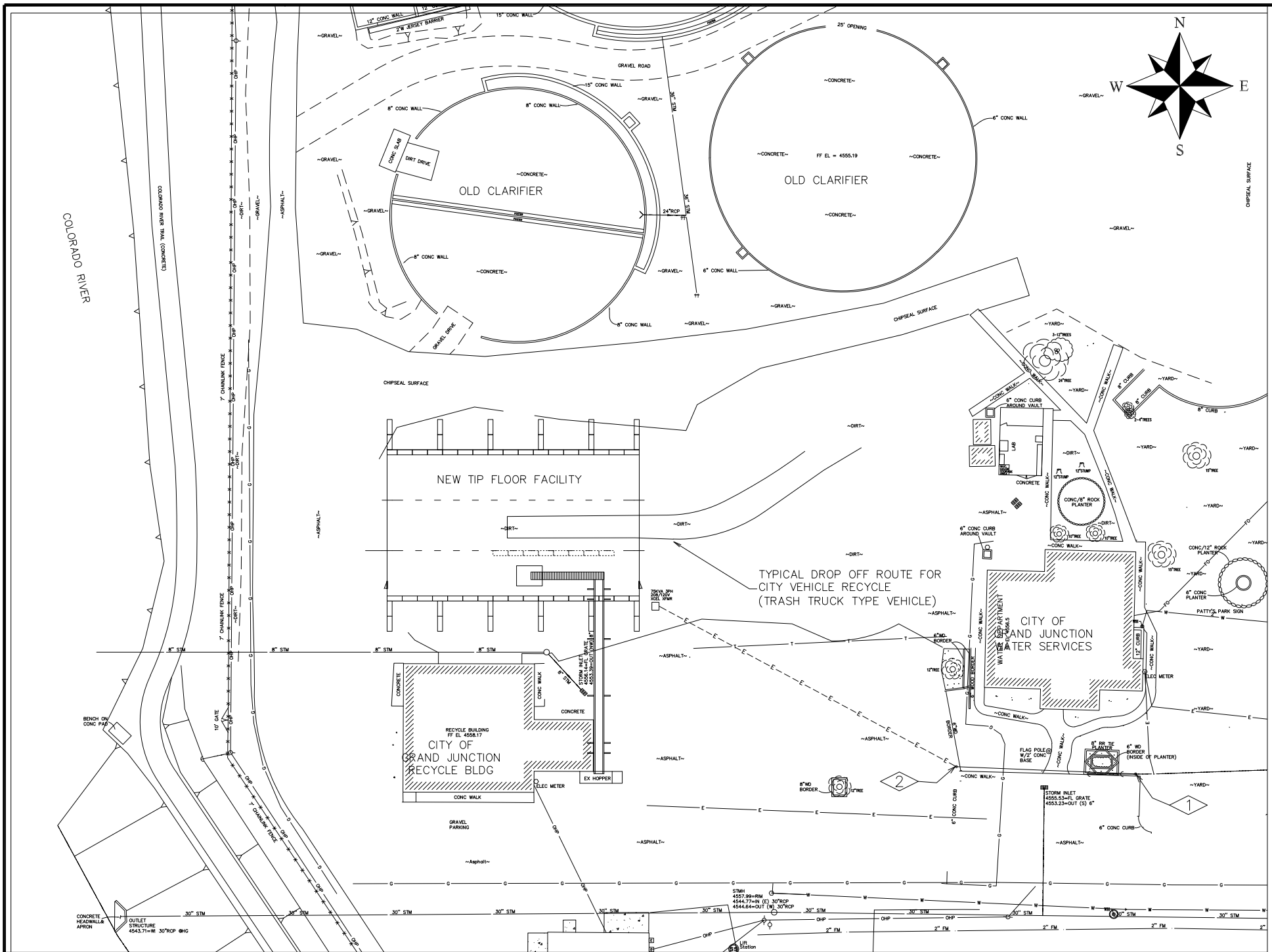
REVISION	DESCRIPTION	DATE	DRAWN BY <u>AJM</u>	DATE <u>2-28-2024</u>	SCALE
REVISION			DESIGNED BY <u>AJM</u>	DATE <u>2-28-2024</u>	N.T.S.
REVISION			CHECKED BY <u>JT</u>	DATE <u>2-28-2024</u>	
REVISION			APPROVED BY <u>JT</u>	DATE <u>2-28-2024</u>	



PUBLIC WORKS
 ENGINEERING DIVISION
 PROJECT NO. ZCDPH-RRE023

RECYCLING TIP FLOOR FACILITY
 COVER SHEET

E:\A\CM\24_236_City of GJ Recycling Building\Drawings\24_236_City of GJ New Recycling Building.dwg - PLOTTED 2/28/2024 1:32:56 PM

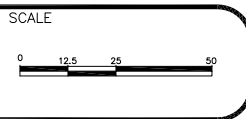


FLAG NOTES:

- ① EXISTING EXCEL POWER POLE AND TRANSFORMER.
- ② XCEL TO PROVIDE NEW POWER POLE AT THIS LOCATION AND EXTEND HIGH VOLTAGE WIRING UNDER GROUND FROM NEW POLE TO NEW NEW TRANSFORMER LOCATION.

REVISION	DESCRIPTION	DATE
REVISION A		
REVISION B		
REVISION C		
REVISION D		

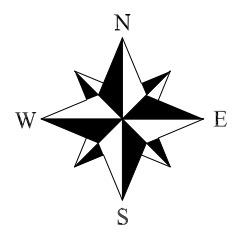
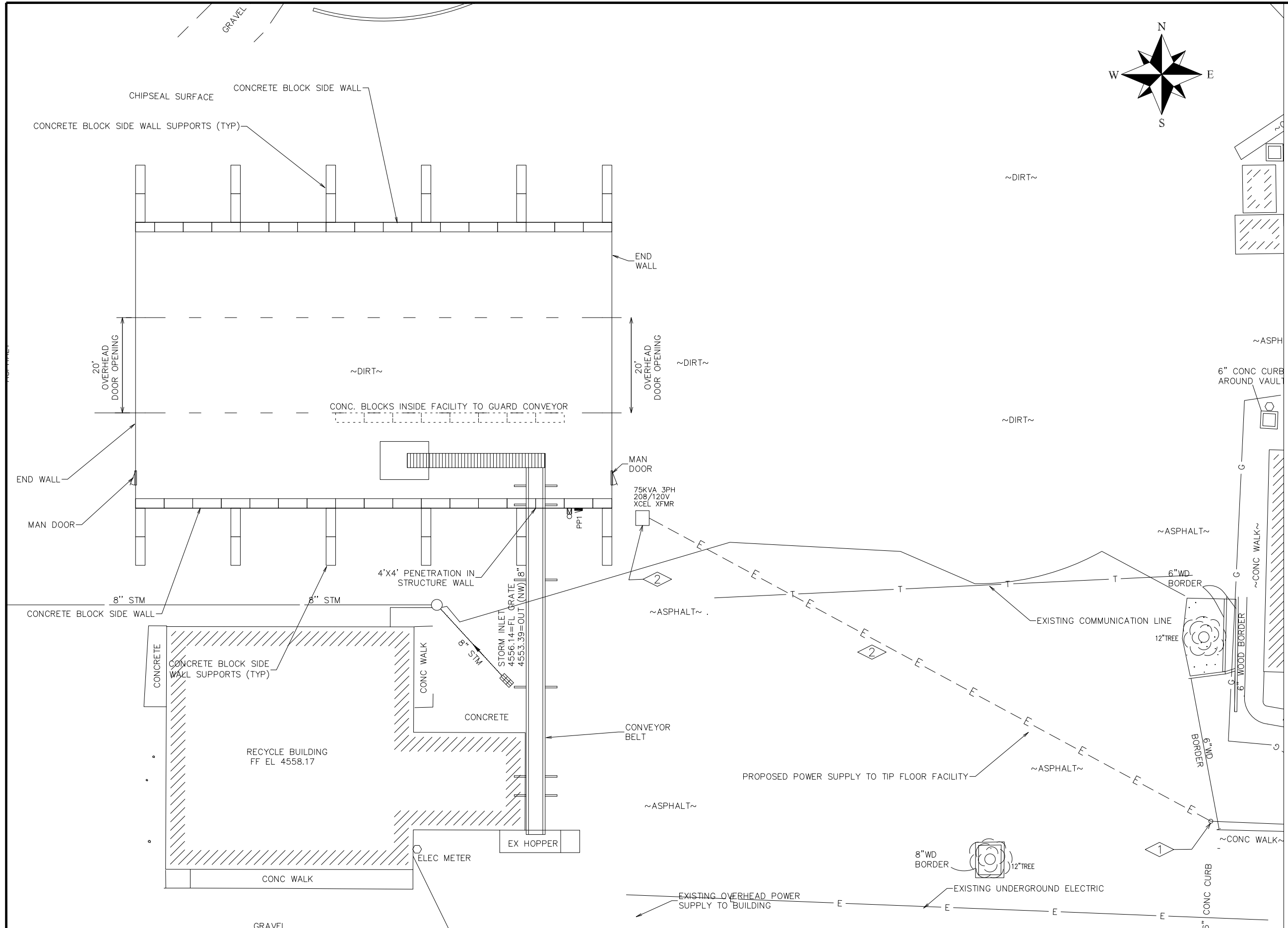
DRAWN BY	AJM	DATE	2-28-2024
DESIGNED BY	AJM	DATE	2-28-2024
CHECKED BY	JT	DATE	2-28-2024
APPROVED BY	JT	DATE	2-28-2024



PUBLIC WORKS
ENGINEERING DIVISION
PROJECT NO. ZCDPH-RRE023

RECYCLING TIP FLOOR FACILITY
SITE PLAN





FLAG NOTES:

- ① NEW POWER POLE INSTALLED BY XCEL.
- ② XCEL TO EXTEND HIGH VOLTAGE WIRING UNDER GROUND FROM NEW POLE TO NEW NEW 75KVA 208/120V 3PHASE TRANSFORMER.



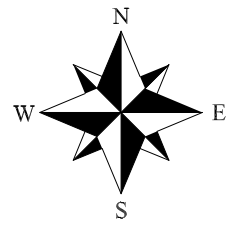
REVISION	DESCRIPTION	DATE	DRAWN BY	DATE	SCALE
REVISION A			AJM	2-28-2024	
REVISION B			AJM	2-28-2024	
REVISION C			JT	2-28-2024	
REVISION D			JT	2-28-2024	



PUBLIC WORKS
ENGINEERING DIVISION
PROJECT NO. ZCDPH-RRE023

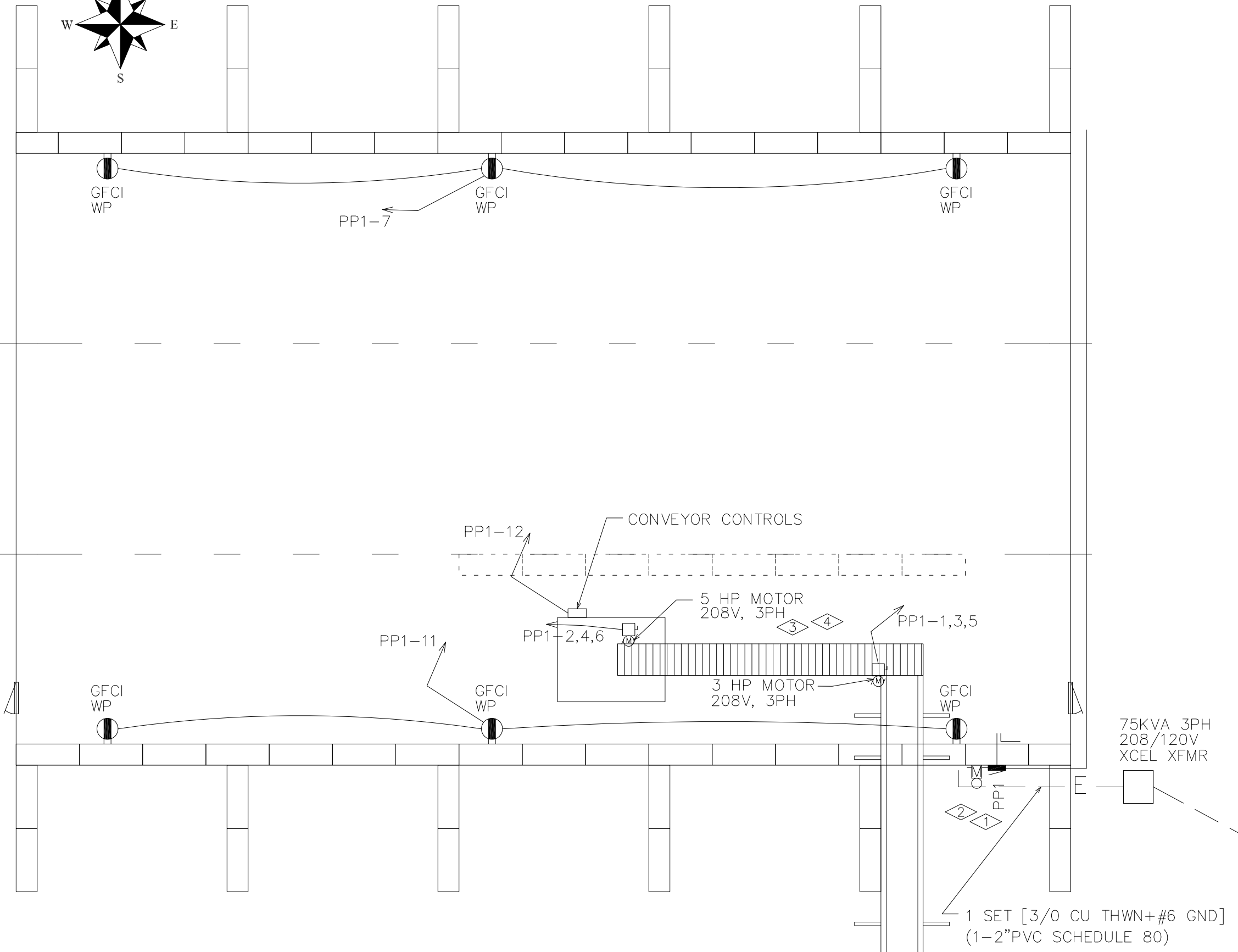
RECYCLING TIP FLOOR FACILITY
NEW SITE LAYOUT PLAN

E:\A\CM\24_236_City of GJ Recycling Building\Drawings\24_236_City of GJ New Recycling Building.dwg - PLOTTED 2/28/2024 1:33:26 PM



FLAG NOTES:

- 1 PROVIDE NEW PANEL "PP1" NEMA 3R 200 AMP 3 PH 208/120 VOLT 24 CIRCUIT NQOD OR EQUIVALENT POWER PANEL.
- 2 COORDINATE INSTALLATION OF NEW METER AND PANEL WITH XCEL ENERGY.
- 3 COORDINATE EXACT LOCATIONS AND WIRING, FOR CONVEYOR CONTROLS, MOTORS.
- 4 COORDINATE WIRING REQUIREMENTS WITH CONVEYOR PROVIDER PRIOR TO ROUGH-IN.



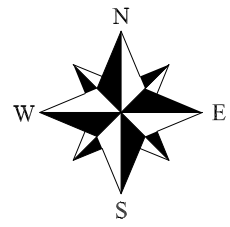
REVISION	DESCRIPTION	DATE	DRAWN BY	DATE	SCALE
REVISION			AJM	2-28-2024	
REVISION			AJM	2-28-2024	
REVISION			JT	2-28-2024	
REVISION			JT	2-28-2024	



PUBLIC WORKS
ENGINEERING DIVISION
PROJECT NO. ZCDPH-RRE023

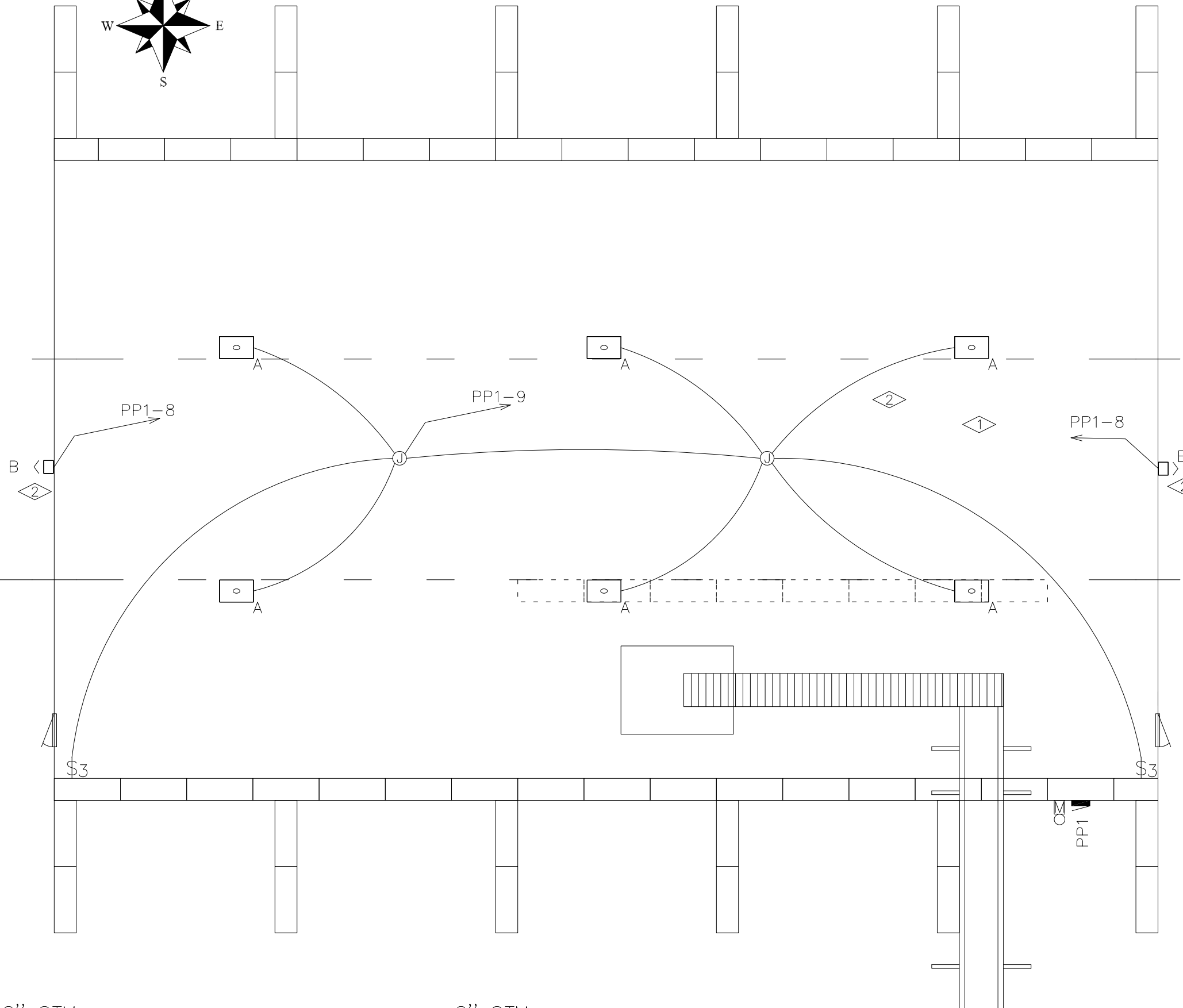
RECYCLING TIP FLOOR FACILITY
ELECTRICAL PLAN

E:\A\CM\24_236_City of GJ Recycling Building\Drawings\24_236_City of GJ New Recycling Building.dwg - PLOTTED 2/28/2024 1:33:40 PM



FLAG NOTES:

- ① COORDINATE THE MOUNTING OF EXTERIOR AND INTERIOR LIGHTING WITH BUILDING PROVIDER PRIOR TO ROUGH-IN, TYPICAL.
- ② ALL LIGHTING TO HAVE MOTION CONTROL FOR DIMMING TO 50%, AS REQUIRED BY ENERGY CODE, TYPICAL.



75KVA 3PH
208/120V
XCEL XFMR



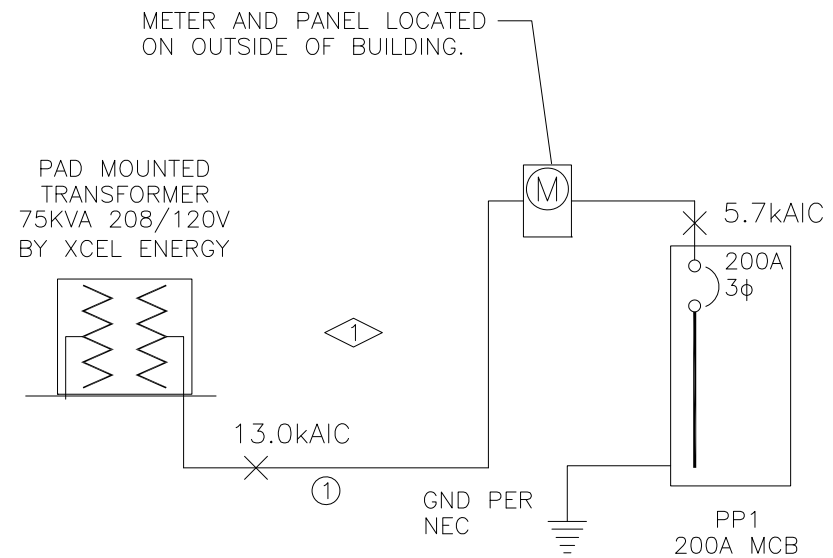
REVISION	DESCRIPTION	DATE	DRAWN BY	DATE	SCALE
REVISION			AJM	2-28-2024	
REVISION			AJM	2-28-2024	
REVISION			JT	2-28-2024	
REVISION			JT	2-28-2024	



PUBLIC WORKS
ENGINEERING DIVISION
PROJECT NO. ZCDPH-RRE023

RECYCLING TIP FLOOR FACILITY
LIGHTING PLAN

E:\A\CM\24_236_City of GJ Recycling Building\Drawings\24_236_City of GJ New Recycling Building.dwg - PLOTTED 2/28/2024 1:33:52 PM



FLAG NOTES:

- ① COORDINATE INSTALLATION AND CONNECTIONS OF NEW CT'S, CABINET AND METER WITH XCEL ENERGY, PRIOR TO ROUGH-IN.

WIRE SIZE LEGEND

- ① 1 SET(S)[2" PVC SCHED. 80
(3-#3/0(CU,THWN)+1#4(CU)GND)]



REVISION	DESCRIPTION	DATE	DRAWN BY	DATE	SCALE
REVISION			AJM	2-28-2024	N.T.S.
REVISION			AJM	2-28-2024	
REVISION			JT	2-28-2024	
REVISION			JT	2-28-2024	



PUBLIC WORKS
ENGINEERING DIVISION
PROJECT NO. ZCDPH-RRE023

RECYCLING TIP FLOOR FACILITY
ONE-LINE PLAN

PANEL: SCH-PP1 DC DEVICE TYPE: Breaker ENCLOSURE: NEMA 3R MAINS(A): BKR CONTINUOUS(A): 200
 LOCATION: DEVICE FAMILY: Plug In MOUNTING: Surface WIRING: 3-Phase 4-Wire BUS SC RATING(A): 10000
 FED FROM: VOLTAGE: 208/120 FAULT CURRENT(A): 5698
 INCIDENT ENERGY: 0.12 Cal/cm2 @18.00(in) BOUNDARY: 4.36(in)

DC AMPS P	NOTES	DESCRIPTION	DEMAND CODE	VA	CKT	PHASE A	LOADS B	VA C	CKT	VA	DEMAND CODE	DESCRIPTION	NOTES	DC AMPS P
20 3		CBL-3HP	NONE	3008	1	2674			2	5013	NONE	CBL-5HP		60 3
"		"		-	3		2674		4	-		"		"
"		"		-	5		2674		6	-		"		"
20 1		RECP N	RCPT	360	7	524			8	164	LTS	LTS EXTERIOR		20 1
20 1		LTS AREA	LTS	1800	9		1800		10	0	SPARE	SPARE		20 1
20 1		RECP S.	RCPT	360	11			914	12	600	SPARE	CONVEYOR CONTROLS		20 1
20 1		SPARE	SPARE	0	13	0			14	0	SPARE	SPARE		20 1
20 1		SPARE	SPARE	0	15		0		16	0	SPARE	SPARE		20 1
0 1		SPACE	SPACE	0	17			0	18	0	SPACE	SPACE		0 1
15 3	SPD	SPD	GENERAL	300	19	100			20	0	SPACE	SPACE		0 1
"		"		-	21		100		22	0	SPACE	SPACE		0 1
"		"		-	23			100	24	0	SPACE	SPACE		0 1
ALL CONNECTED		KVA	3P AVE	AMPS	* PHASE	TOTALS	VA		AMPS		BUS TOTALS	KVA		
TOTAL CONNECTED		11.15		31.0	* A-N		3195.0		26.6		CONNECTED	11.15		
TOTAL DEMAND		11.59		32.2	* B-N		4346.0		36.2		DESIGN	11.59		
TOTAL DESIGN		13.37		37.1	* C-N		3652.3		30.4			13.37		

LUMINAIRE SCHEDULE					
TYPE	MANUFACTURER	APPROVAL	VOLTAGE	BALLAST	DESCRIPTION
	MODEL NUMBER		MOUNTING	LAMPE TYPE	
			# OF LAMPS	LAMP CAT. #	
A	WESTGATE	APPROVED	120	ELECTRONIC	LED HIGH BAY, 50% MOTION DETECTOR DIMMING
	LLHB4-300W-50K-D-OPT-SEN-LLHB4-OPT-FWH-63	EQUIVALENT	SURFACE CEILING	LED	
			1	300 W	
B	LEOTEK	APPROVED	120	ELECTRONIC	LED WALL SCONCE, 50% MOTION DETECTOR DIMMING
	ES1-48H-MV-NW-W-BK-350-PC-MSL3-EM	EQUIVALENT	SURFACE WALL	LED	
			1	83 W	



REVISION Δ	DESCRIPTION	DATE	DRAWN BY AJM	DATE 2-28-2024	SCALE
REVISION Δ			DESIGNED BY AJM	DATE 2-28-2024	N.T.S.
REVISION Δ			CHECKED BY JT	DATE 2-28-2024	
REVISION Δ			APPROVED BY JT	DATE 2-28-2024	



PUBLIC WORKS
 ENGINEERING DIVISION
 PROJECT NO. ZCDPH-RRE023

RECYCLING TIP FLOOR FACILITY
 SCHEDULES