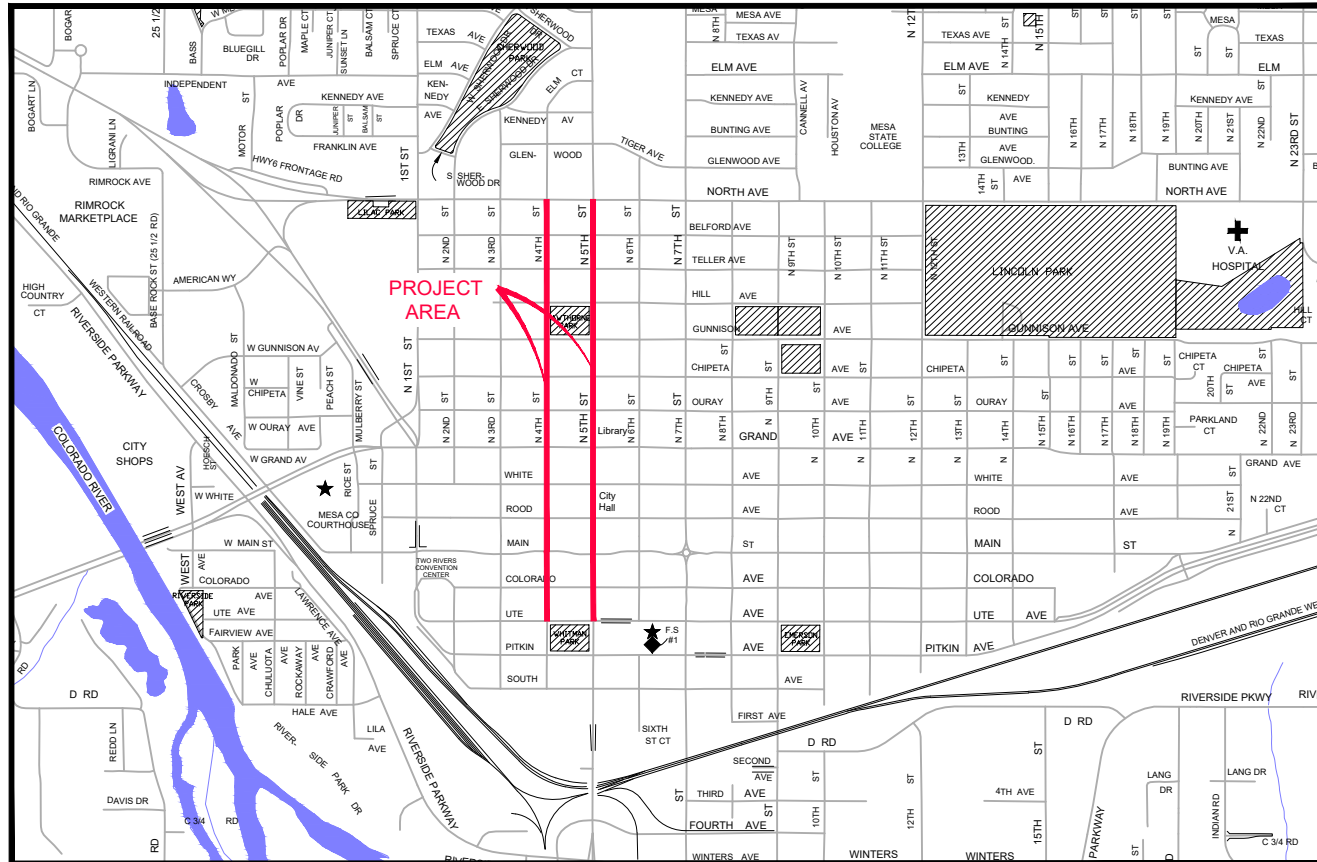


4th & 5th Streets Improvements

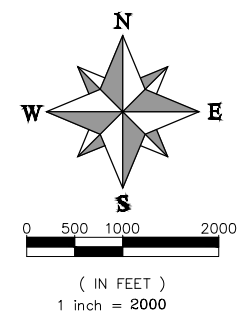
VICINITY MAP



- 1 ——— Cover Sheet
- 2 ——— Standard Abbreviations, Legend, and Symbols
- 3 ——— 4th Street (Pitkin Ave. to Main St.)
- 4 ——— 4th Street (Main St. to Grand Ave.)
- 5 ——— 4th Street (Grand Ave. to Gunnison Ave.)
- 6 ——— 4th Street (Gunnison Ave. to Belford Ave.)
- 7 ——— 4th Street (Belford Ave. to North Ave.)
- 8 ——— 5th Street (Ute Ave. to Rood Ave.)
- 9 ——— 5th Street (Rood Ave. to Ouray Ave.)
- 10 ——— 5th Street (Ouray Ave. to Hill Ave.)
- 11 ——— 5th Street (Hill Ave. to North Ave.)
- 12 ——— Belford Avenue (4th St. to 5th St)
- 13 ——— Utility Plan & Profile (4th St and Belford Ave)

UTILITIES AND AGENCIES

AGENCY	NAME	POSITION	ROLE	MAILING ADDRESS	STREET ADDRESS	CITY, STATE	VOICE-WK	FAX
CITY OF GRAND JUNCTION	Toby Thieman	PROJECT ENGINEER	PROJECT ENGINEER	333 WEST AVE BLDG C	333 WEST AVE BLDG C	GRAND JCT., CO 81501	(970) 244-1559	(970) 256-4022
CITY OF GRAND JUNCTION	Toby Thieman	PROJECT ENGINEER	SANITARY SEWER	333 WEST AVE BLDG C	333 WEST AVE BLDG C	GRAND JCT., CO 81501	(970) 244-1559	(970) 256-4022
ORCHARD MESA IRRIGATION	MAX SCHMIDT	MANAGER	IRRIGATION	668 38 RD	668 38 RD	PALISADE, CO 81526	(970) 464-7885	(970) 464-5928
SPECTRUM	JEFF VALDEZ	MANAGER	CABLE TV	2502 FORESIGHT CIRCLE	2502 FORESIGHT CIRCLE	GRAND JCT., CO 81504	(970) 245-8750	(970) 245-6803
CENTURYLINK	CHRIS JOHNSON	ENGINEER	TELEPHONE	2524 BLICHMANN AVE	2524 BLICHMANN AVE	GRAND JCT., CO 81504	(970) 244-4311	(970) 240-4349
UTE WATER	JUSTIN BATES	SUPERVISOR	WATER	PO BOX 460	2190 H 1/4 RD	GRAND JCT., CO 81502	(970) 242-7491	(970) 242-9189
XCEL	STEVE PIBURN	UNIT MANAGER	ELECTRIC	2538 BLICHMANN AVE	2538 BLICHMANN AVE	GRAND JCT., CO 81506	(970) 244-2664	(970) 244-2664
XCEL	SARAH DARRICAU	UNIT MANAGER	GAS	2538 BLICHMANN AVE	2538 BLICHMANN AVE	GRAND JCT., CO 81506	(970) 244-2656	(970) 244-2656



PROJECT NO. F2201

NOTE: NOTIFY AFFECTED UTILITY VENDOR 48 HOURS PRIOR TO EXCAVATIONS THAT WILL EXPOSE UTILITY LINES. THE COVER SHEET WILL HAVE A LISTING OF UTILITY VENDORS AND TELEPHONE NUMBERS.

REVISION	DESCRIPTION	DATE
REVISION Δ XXX		201X
REVISION Δ XXX		201X
REVISION Δ XXX		201X
REVISION Δ XXX		201X



*Public Works
Engineering Division*



Know what's below.
Call before you dig.

DRAWING STATUS:	
●	PROGRESS
○	FINAL CONSTRUCTION DRAWINGS
○	ASBUILT
DESIGNED BY:	
ERIC MOCKO, TRANSPORTATION ENGINEER	03/2024
REVIEWED BY:	
ERIC MOCKO, TRANSPORTATION ENGINEER	03/2024
AUTHORIZED FOR CONSTRUCTION	
KEN HALEY, ENGINEERING MANAGER	03/2024
ACCEPTED AS CONSTRUCTED	
ERIC MOCKO, TRANSPORTATION ENGINEER	03/2024

F2201 (4th-5th Street Improvements)

ABBREVIATIONS

AASHTO	AMERICAN ASSOCIATION OF STATE HIGHWAY & TRANSPORTATION OFFICIALS
ABC	AGGREGATE BASE COURSE
AC	ASBESTOS CEMENT
AP	ANGLE POINT
ASB	ANCHORED STRAW BALES
ASP	ALUMINIZED STEEL PIPE
ASTM	AMERICAN SOCIETY FOR TESTING MATERIALS
AWWA	AMERICAN WATER WORKS ASSOCIATION
BC	BACK OF CURB
BF	BUTTERFLY VALVE
BOW	BACK OF WALK
BCR	BEGIN CURB RETURN
BOT	BOTTOM
BSWMP	BETTER STORM WATER MANAGEMENT PRACTICES
CH	CHORD
CAP	CORRUGATED ALUMINUM PIPE
CDOT	COLORADO DEPARTMENT OF TRANSPORTATION
CI	CAST IRON
C,G,& SW	CURB, GUTTER & SIDEWALK
C	CENTER LINE
CL	CLEAR
CMP	CORRUGATED METAL PIPE
CO	CLEAN OUT
COMB	COMBINATION (AS IN STORM SEWER AND SANITARY SEWER)
CONC	CONCRETE
CSM	CITY SURVEY MONUMENT
CSP	CORRUGATED STEEL PIPE
CU	COPPER
DI	DUCTILE IRON
DWY	DRIVEWAY
E	ELECTRIC
ECR	END CURB RETURN
EG	EDGE OF GUTTER
EL	ELEVATION
EP	EDGE OF PAVEMENT
EX	EXISTING
FB	FULL BODY
FC	FACE OF CURB
FG	FINISHED GRADE
F	FLOW LINE
FL	FLANGE
FM	FORCE MAIN
FO	FIBER OPTICS
FS	FAR SIDE
FTG	FOOTING
G	GAS
GB	GRADE BREAK
GM	GAS METER
GV	GATE VALVE
HBP	HOT BITUMINOUS PAVEMENT
HDPE	HIGH DENSITY POLYETHYLENE
INV	INVERT
IRR	IRRIGATION
L	LENGTH OF ARC
LC	LONG CHORD
LF	LINEAR FEET
LL	LONG ARC
LS	SHORT ARC
LT	LEFT
MB	MAILBOX
MCSM	MESA COUNTY SURVEY MONUMENT
MH	MANHOLE
MJ	MECHANICAL JOINT
MW	MILL WRAP
N/A	NOT APPLICABLE
NIC	NOT IN CONTRACT
NOP	NO ONE PERSON
NRCP	NON-REINFORCED CONCRETE PIPE
NS	NEAR SIDE
NTS	NOT TO SCALE
OHP	OVERHEAD POWER
OHT	OVERHEAD TELEPHONE
PC	POINT OF CURVATURE
PCC	POINT OF COMPOUND CURVATURE
PE	POLYETHYLENE
PERF	PERFORATED
PI	POINT OF INTERSECTION
PIP	PLASTIC IRRIGATION PIPE
POC	POINT ON CURVE
POT	POINT ON TANGENT
PR	PROPOSED
PRC	POINT OF REVERSE CURVATURE
PT	POINT OF TANGENCY
PVC	POLYVINYL CHLORIDE
R	RADIUS
RCP	REINFORCED CONCRETE PIPE
REQ'D	REQUIRED
RG	RESTRAINED GLANDS
RL	LONG RADIUS
ROW	RIGHT OF WAY
RP	RADIUS POINT
RR	RAIL ROAD
RS	SHORT RADIUS
RT	RIGHT
S	SLOPE
SAN	SANITARY
SC	SHORT CHORD
SCD	STANDARD CONTRACT DOCUMENTS
SCH	SCHEDULE
SF	SILT FENCE
SL	SECTION LINE
SSRB	STANDARD SPECIFICATIONS FOR ROAD & BRIDGE CONSTRUCTION
SSUU	STANDARD SPECIFICATIONS FOR CONSTRUCTION OF UNDERGROUND UTILITIES
STA	STATION
STL	STEEL
STM	STORM
T	TELEPHONE
TAN	LENGTH OF TANGENT
TC	TOP OF CURB
TH	TEST HOLE
TV	TELEVISION
(TYP)	TYPICAL
UU	UNDERGROUND UTILITIES
VC	VERTICAL CURVE
VCP	VITRIFIED CLAY PIPE
VPC	VERTICAL POINT OF CURVATURE
VPCC	VERTICAL POINT OF COMPOUND CURVATURE
VPRC	VERTICAL POINT OF REVERSE CURVATURE
VPI	VERTICAL POINT OF INTERSECTION
VPT	VERTICAL POINT OF TANGENCY
W	WATER
Δ	DELTA ANGLE

LEGEND

BSWMP DRAINAGE BASIN BOUNDARY	
BSWMP ANCHORED STRAW BALES	
BSWMP SILT FENCE	
BSWMP EROSION LOG	
BUILDING	
CONCRETE CURB AND GUTTER	
CONCRETE CURB, GUTTER, & SIDEWALK	
CONCRETE DITCH	
CONCRETE SIDEWALK	
CULVERT	
EARTH DITCH	
EDGE OF GRAVEL	
EDGE OF PAVEMENT	
FENCE (BARBED WIRE)	
FENCE (CHAIN LINK)	
FENCE (IRON)	
FENCE (PLASTIC)	
FENCE (WOVEN WIRE)	
GUARD RAIL	
HATCHING: INDICATES ASPHALT REMOVAL	
HATCHING: INDICATES CONCRETE REMOVAL	
HATCHING: INDICATES STAGING AREA	
LINE (CENTER OF IMPROVEMENTS)	
LINE (CITY LIMITS)	
LINE (CONTROL)	
LINE (EASEMENT)	
LINE (MONUMENT/SECTION)	
LINE (PROPERTY)	
LINE (RIGHT OF WAY)	
MATCH LINE	
PIPE (IRRIGATION)	
PIPE (SIPHON)	

PROPOSED CONCRETE CURB AND GUTTER	
PROPOSED CONCRETE CURB, GUTTER, & SIDEWALK	
PROPOSED CONCRETE SIDEWALK	
PROPOSED "WET" UTILITIES (CONSTRUCTION NOTE WILL INDICATE TYPE, SIZE, AND MATERIAL OF NEW MAIN)	
ALL PROPOSED FEATURES NOT SHOWN IN LEGEND WILL BE SHOWN THE SAME AS THEIR EXISTING COUNTERPART, BUT INDICATED BY BOLDER LINETYPE	
RAIL ROAD	
RETAINING WALL	
STRIPING (CONTINUOUS WHITE)	
STRIPING (DASHED WHITE)	
STRIPING (CONTINUOUS YELLOW)	
STRIPING (DASHED YELLOW)	
TOP OF SLOPE	
CONTOUR LINES (SHOWN BETWEEN TOP & TOE)	
TOE OF SLOPE	
TRAFFIC DETECTOR LOOP	
UTILITY LINE (ABANDON) (THIS CASE A WATER LINE)	
UTILITY LINE (CABLE TV)	
UTILITY LINE (ELECTRIC)	
UTILITY LINE (FIBER OPTIC)	
UTILITY LINE (GAS)	
UTILITY LINE (HIGH VOLTAGE OVERHEAD POWER)	
UTILITY LINE (OVERHEAD POWER)	
UTILITY LINE (OVERHEAD TELEPHONE)	
UTILITY LINE (SANITARY SEWER)	
UTILITY LINE (SANITARY SEWER FORCE MAIN)	
UTILITY LINE (SANITARY SEWER SERVICE)	
UTILITY LINE (STORM SEWER)	
UTILITY LINE (STORM SEWER, PERFORATED)	
UTILITY LINE (STORM/SANITARY SEWER SEWER COMBINATION)	
UTILITY LINE (TELEPHONE)	
UTILITY LINE (WATER)	

SYMBOLS

BENCH MARK	
CATCH BASIN	
CLEAN OUT	
CURB STOP	
DELINEATOR (WHITE)	
DELINEATOR (YELLOW)	
FIRE HYDRANT	
GUY WIRE ANCHOR	
HEADGATE	
IRRIGATION PUMP	
MAILBOX	
MANHOLE (ELECTRIC)	
MANHOLE (GAS)	
MANHOLE (SANITARY/STORM)	
MANHOLE (TELEPHONE)	
MANHOLE (TV)	
MANHOLE (WATER)	
METER (GAS)	
METER (WATER)	
PEDESTAL (TELEPHONE)	
PEDESTAL (TV)	
PROPERTY PIN	
PULL BOX	
REDUCER FITTING	
SIGN OR POST (SIGN TYPE NOTED)	
SPRINKLER HEAD	
STREET LIGHT	
SURVEY MONUMENT (CITY)	
SURVEY MONUMENT (TYPE NOTED)	
TEST HOLE	
TRAFFIC PAINT MARKING	
TRAFFIC SIGNAL POLE AND MAST ARM	
UTILITY POLE	
VALVE (GAS)	
VALVE (IRRIGATION)	
VALVE (WATER)	
VEGETATION (HEDGE OR BUSH)	
VEGETATION (TREE STUMP)	
VEGETATION (TREE) (CALIPER SIZE NOTED)	
WATER HYDRANT	
WEIR	
YARD LIGHT	

NORTH ARROW:

BAR SCALE:

(IN FEET)
1 inch = 20 feet

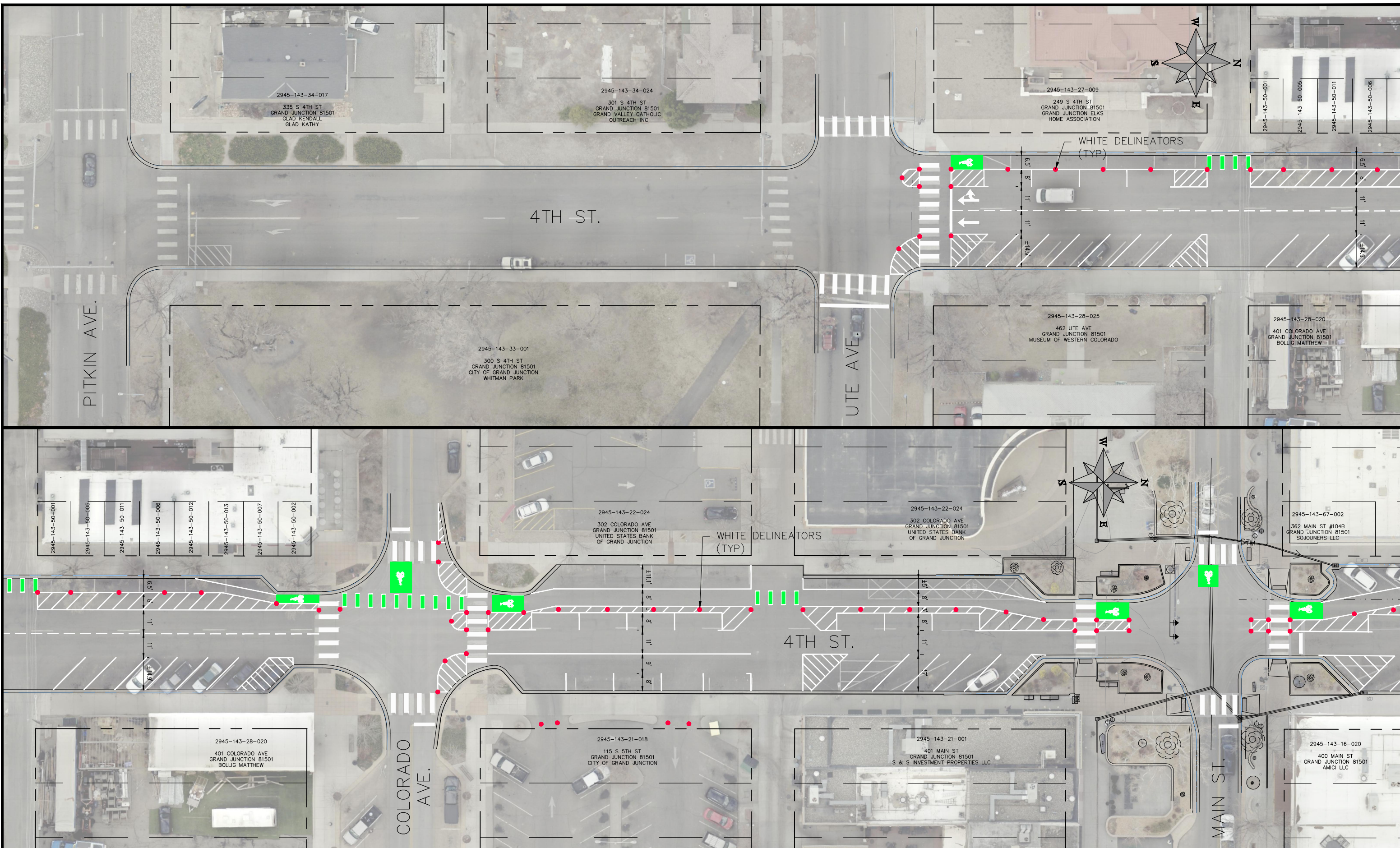
REVISION	DESCRIPTION	DATE	PROJECT NO.
REVISION Δ			DRAWN BY JCS DATE 4-02
REVISION Δ			DESIGNED BY DATE
REVISION Δ			CHECKED BY DATE
REVISION Δ			APPROVED BY DATE

SCALES: PLAN & PROFILE



PUBLIC WORKS
ENGINEERING DIVISION

4TH & 5TH STREET IMPROVEMENTS
STANDARD ABBREVIATIONS, LEGEND,
AND SYMBOLS



REVISION	DESCRIPTION	DATE	PROJECT NO. F2201
REVISION Δ XXX		202X	
REVISION Δ XXX		202X	
REVISION Δ XXX		202X	
REVISION Δ XXX		202X	

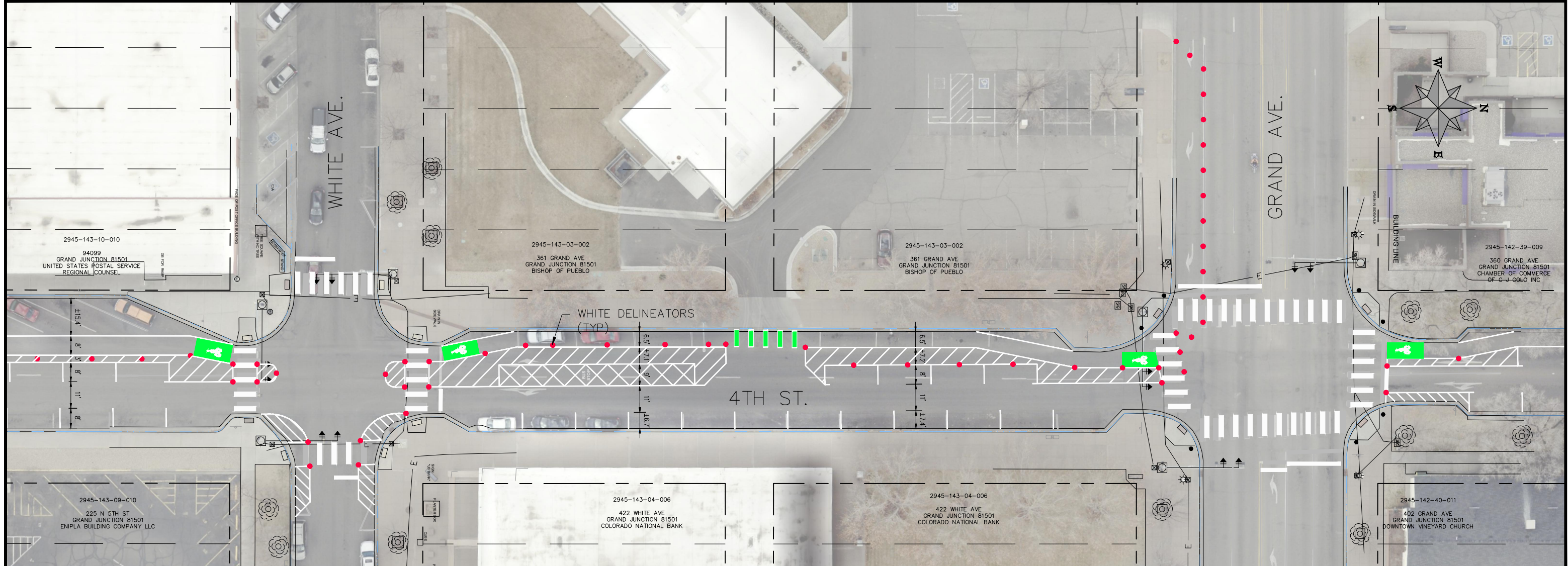
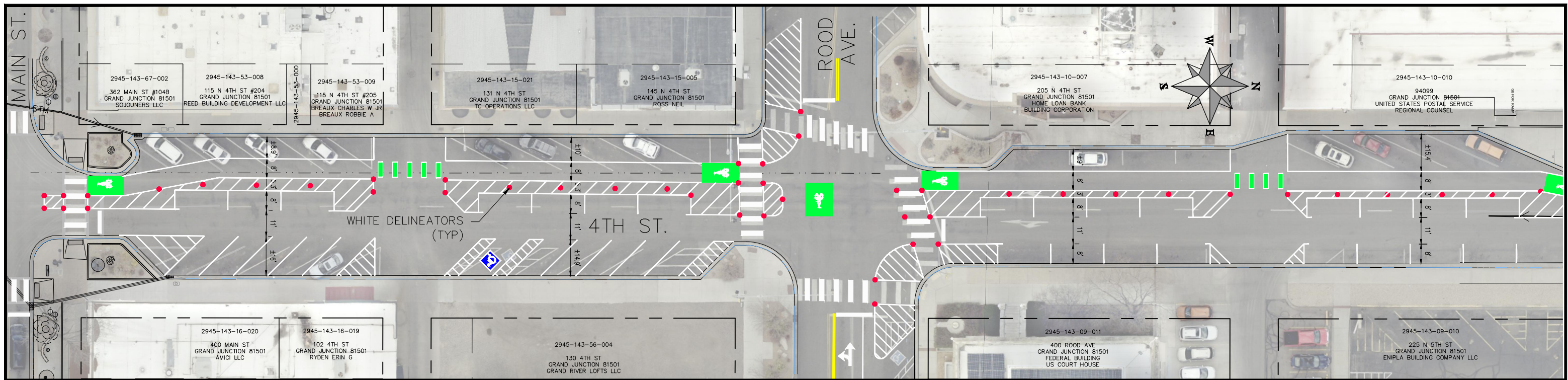
DATE	PROJECT NO. F2201
09/2022	
01/2023	
02/2023	
02/2023	

SCALES: PLAN & PROFILE
 HORIZONTAL: 1" = 40'
 0 10 20 40
 VERTICAL: 1" = N/A

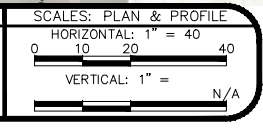
CITY OF Grand Junction COLORADO

PUBLIC WORKS ENGINEERING DIVISION

**4TH & 5TH STREETS IMPROVEMENTS
 4TH STREET (PITKIN AVE. TO MAIN ST.)
 IMPROVEMENT PLAN**

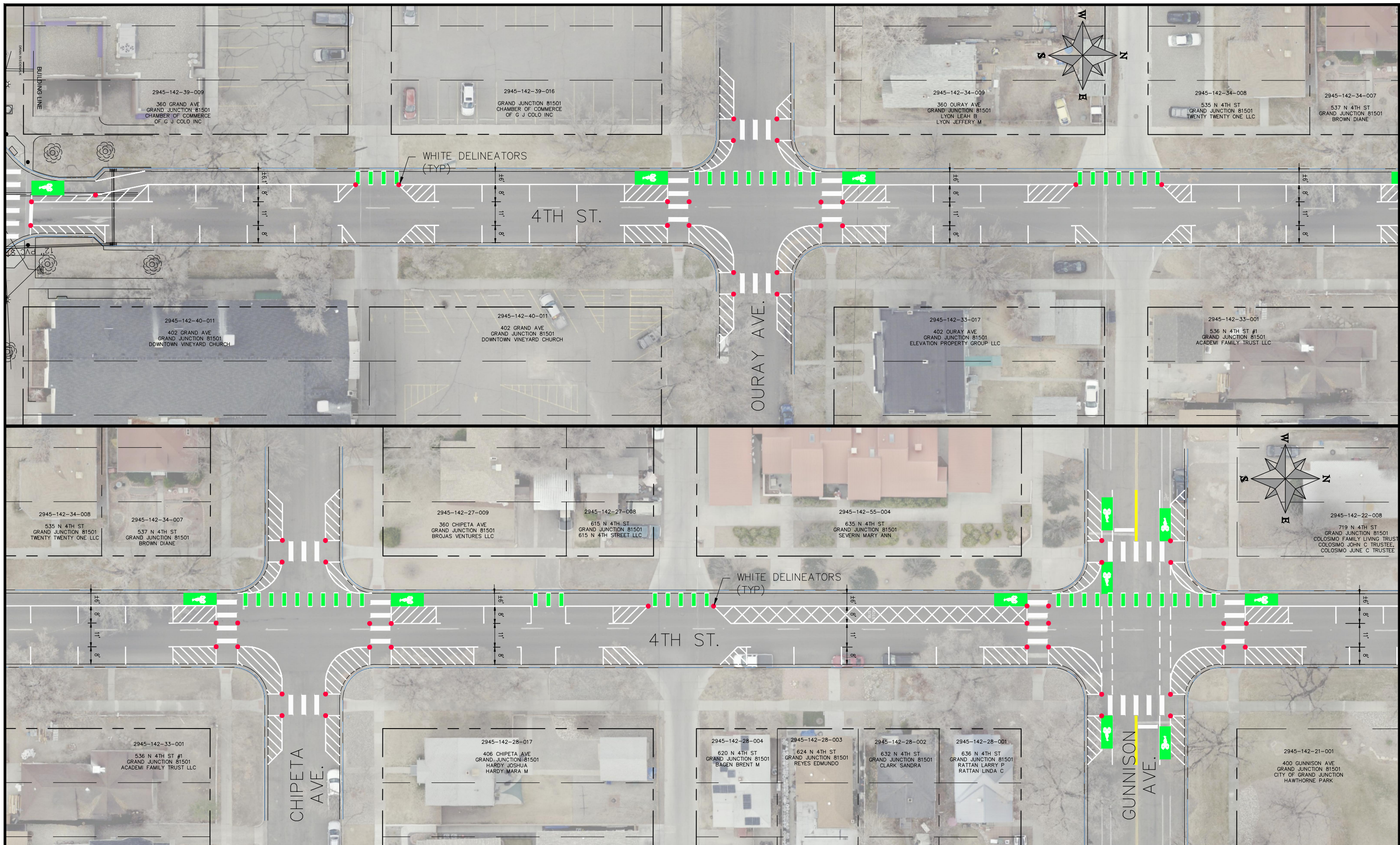


REVISION	DESCRIPTION	DATE	PROJECT NO. F2201
REVISION Δ XXX		202X	DRAWN BY DJM DATE 09/2022
REVISION Δ XXX		202X	DESIGNED BY DJM DATE 01/2023
REVISION Δ XXX		202X	CHECKED BY EM DATE 02/2023
REVISION Δ XXX		202X	APPROVED BY KH DATE 02/2023



PUBLIC WORKS
ENGINEERING DIVISION

4TH & 5TH STREETS IMPROVEMENTS
4TH STREET (MAIN ST. TO GRAND AVE.)
IMPROVEMENT PLAN



REVISION	DESCRIPTION	DATE
REVISION Δ XXX		202X
REVISION Δ XXX		202X
REVISION Δ XXX		202X
REVISION Δ XXX		202X

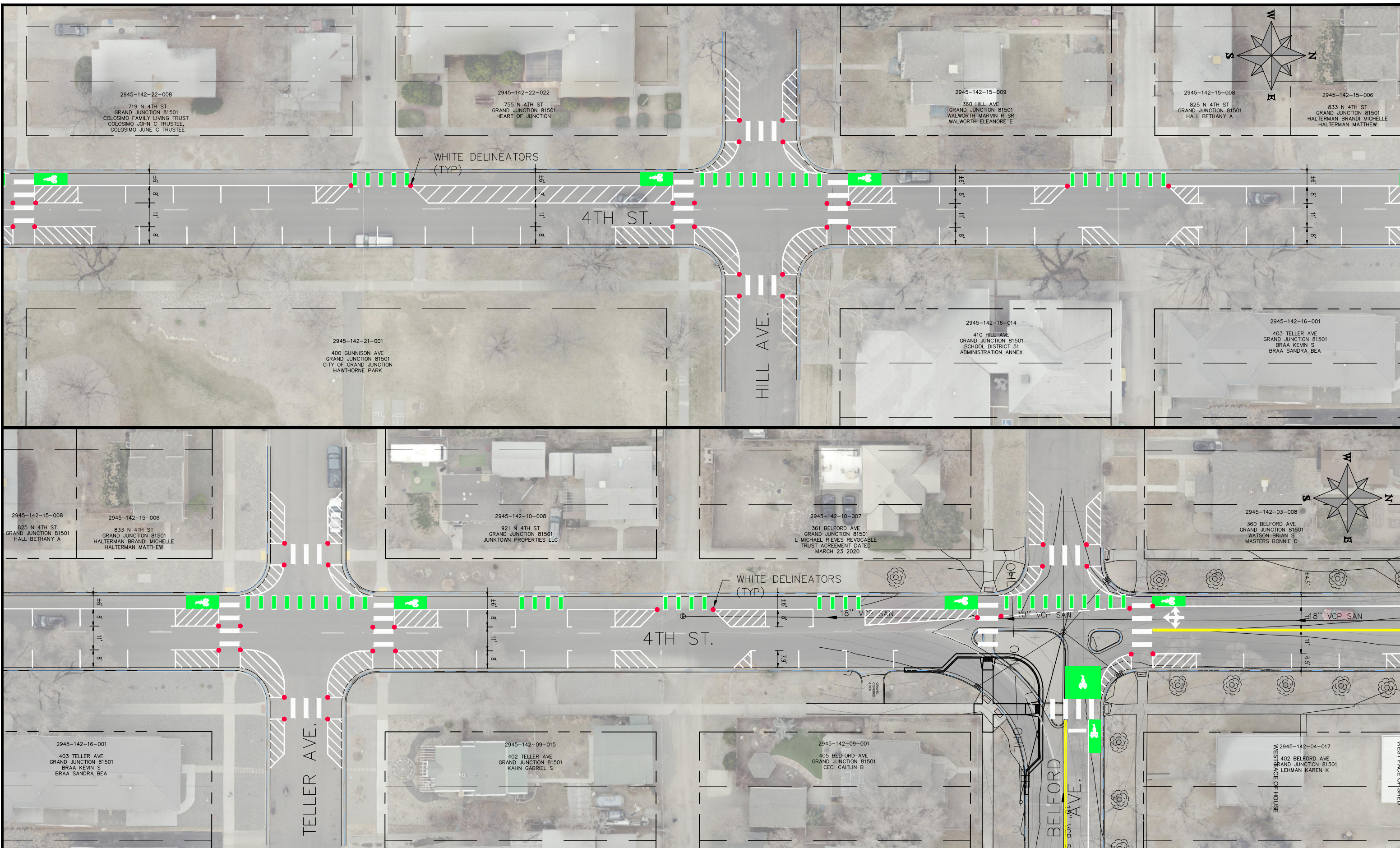
PROJECT NO. F2201
DRAWN BY DJM DATE 09/2022
DESIGNED BY DJM DATE 01/2023
CHECKED BY EM DATE 02/2023
APPROVED BY KH DATE 02/2023

SCALES: PLAN & PROFILE
HORIZONTAL: 1" = 40'
VERTICAL: 1" = N/A



**PUBLIC WORKS
ENGINEERING DIVISION**

**4TH & 5TH STREETS IMPROVEMENTS
4TH STREET (GRAND AVE. TO GUNNISON AVE.)
IMPROVEMENT PLAN**



REVISION	DESCRIPTION	DATE
REVISION Δ XXX		202X
REVISION Δ XXX		202X
REVISION Δ XXX		202X
REVISION Δ XXX		202X

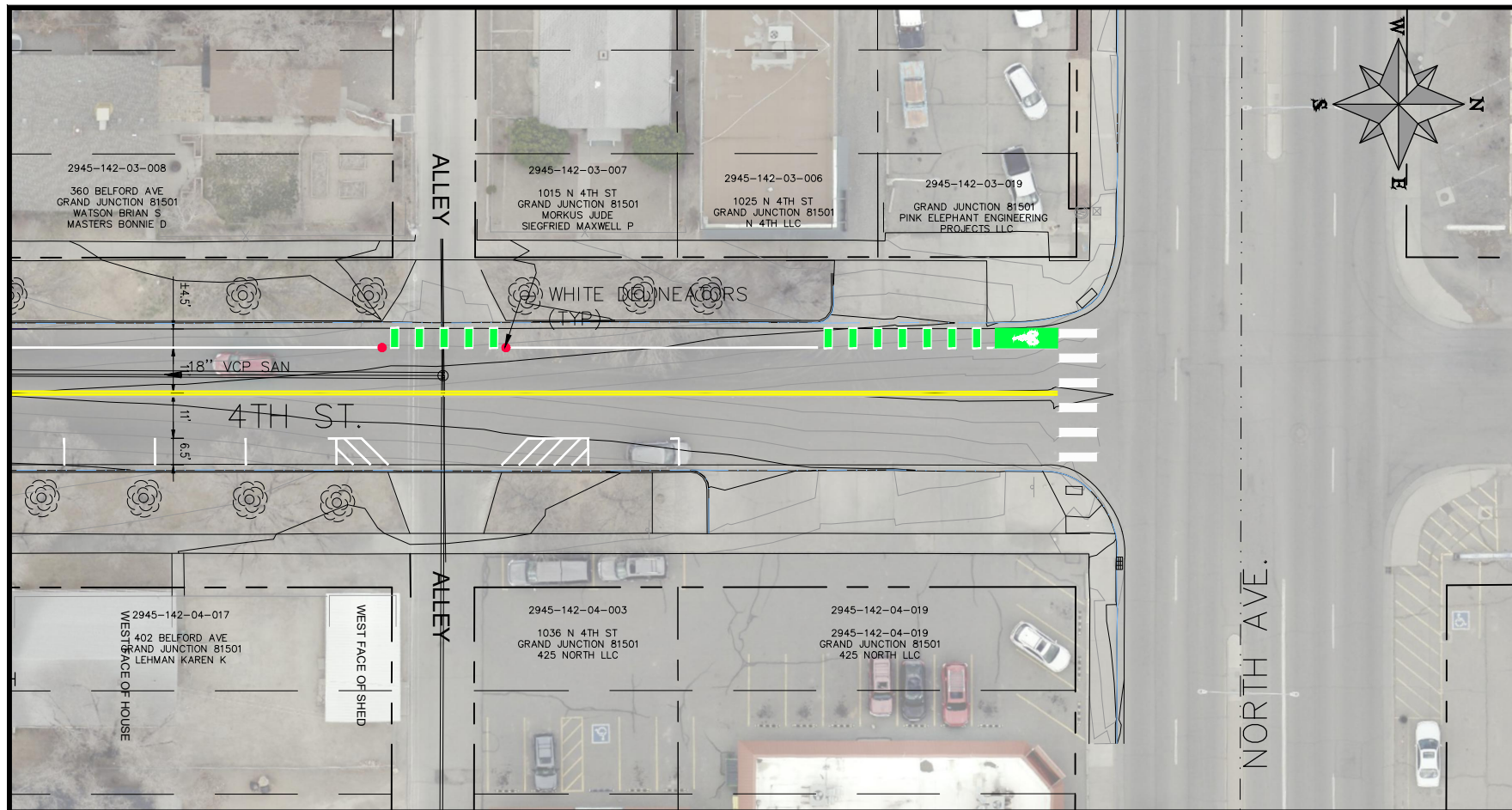
PROJECT NO. F2201	
DRAWN BY DJM	DATE 09/2022
DESIGNED BY DJM	DATE 01/2023
CHECKED BY EM	DATE 02/2023
APPROVED BY KH	DATE 02/2023

SCALES: PLAN & PROFILE	
HORIZONTAL: 1" = 40'	
VERTICAL: 1" = 10'	N/A



**PUBLIC WORKS
ENGINEERING DIVISION**

**4TH & 5TH STREETS IMPROVEMENTS
4TH STREET (GUNNISON AVE. TO BELFORD AVE.)
IMPROVEMENT PLAN**



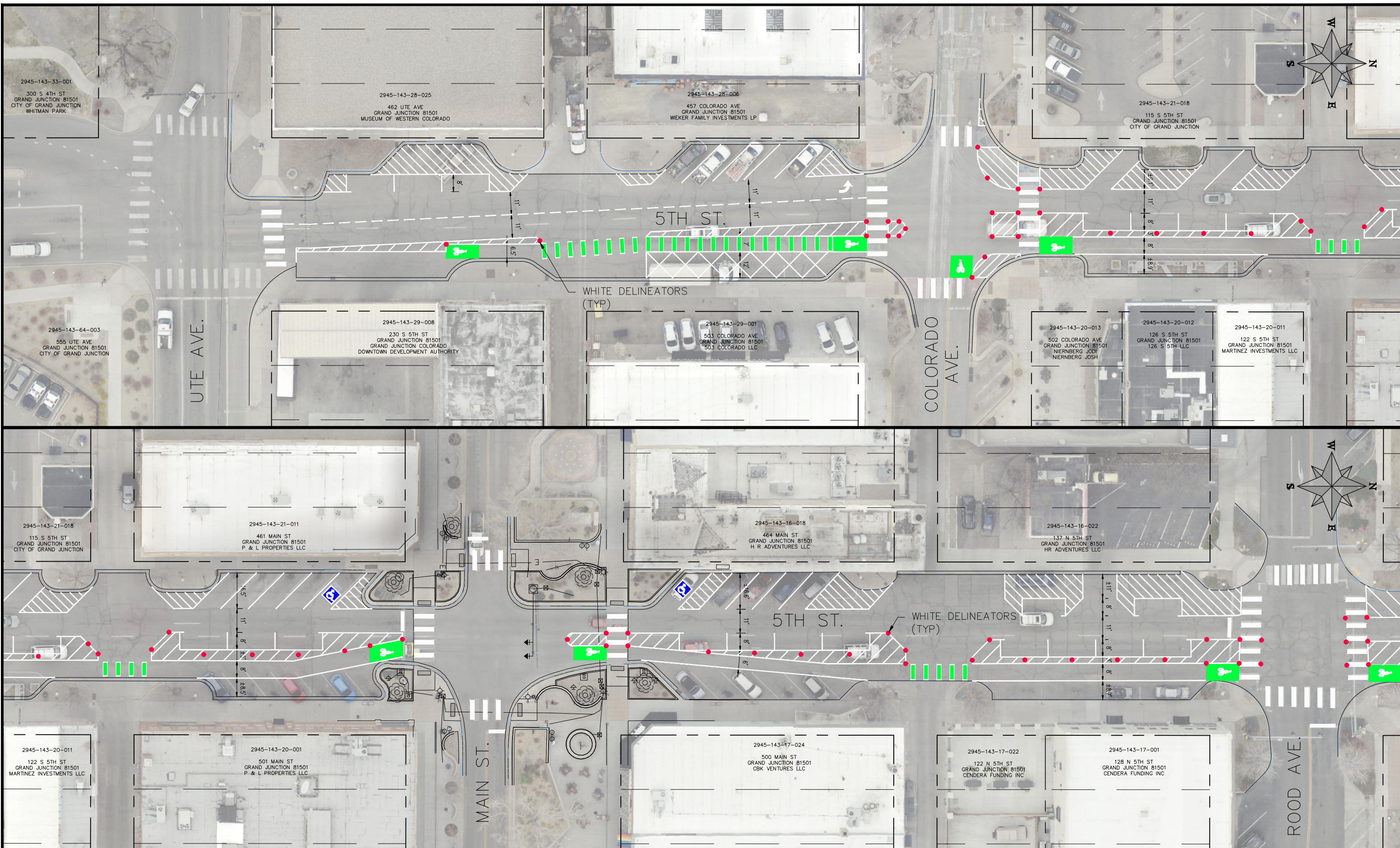
REVISION	DESCRIPTION	DATE	PROJECT NO. F2201
REVISION Δ XXX		- 202X	DRAWN BY DJM DATE 09/2022
REVISION Δ XXX		- 202X	DESIGNED BY DJM DATE 01/2023
REVISION Δ XXX		- 202X	CHECKED BY EM DATE 02/2023
REVISION Δ XXX		- 202X	APPROVED BY KH DATE 02/2023

SCALES: PLAN & PROFILE	
HORIZONTAL: 1" = 40'	0 10 20 40
VERTICAL: 1" =	N/A

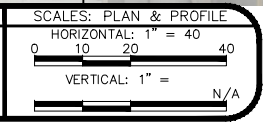


PUBLIC WORKS
ENGINEERING DIVISION

4TH & 5TH STREETS IMPROVEMENTS
4TH STREET (BELFORD AVE. TO NORTH AVE.)
IMPROVEMENT PLAN

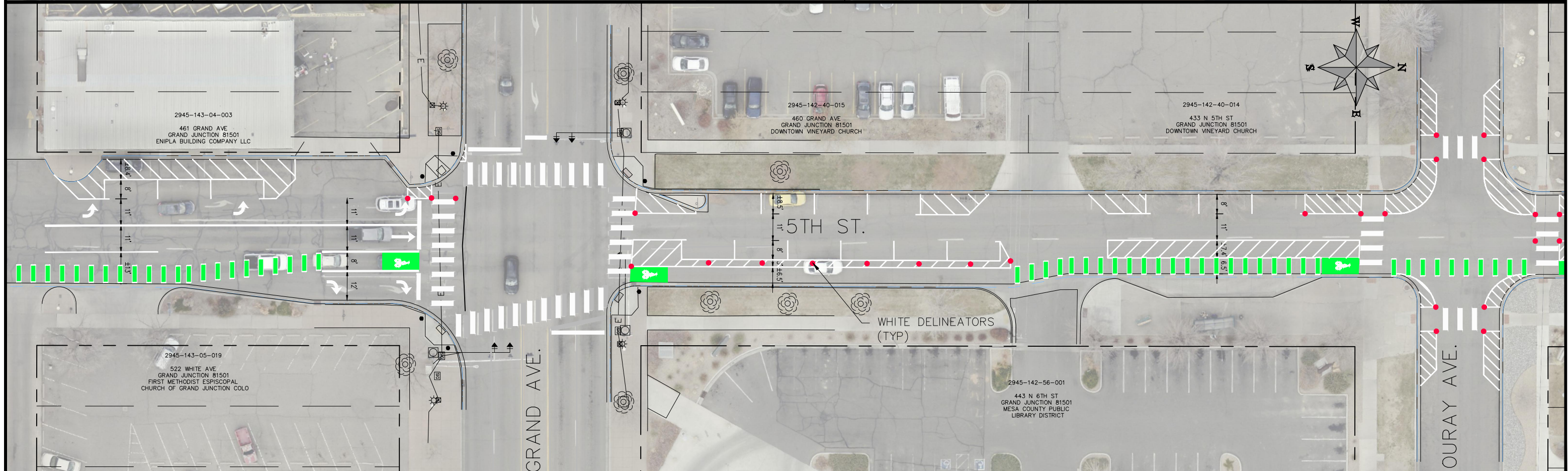
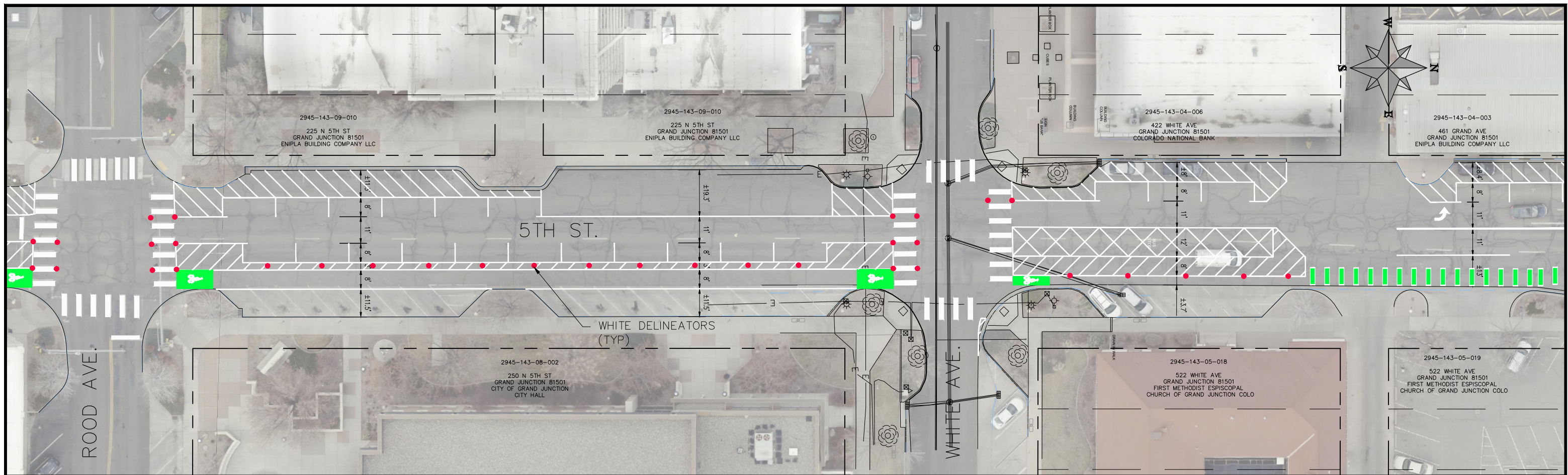


REVISION	DESCRIPTION	DATE	PROJECT NO. F2201
REVISION Δ XXX		202X	DRAWN BY DJM DATE 09/2022
REVISION Δ XXX		202X	DESIGNED BY DJM DATE 01/2023
REVISION Δ XXX		202X	CHECKED BY EM DATE 02/2023
REVISION Δ XXX		202X	APPROVED BY KH DATE 02/2023

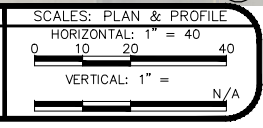


**PUBLIC WORKS
ENGINEERING DIVISION**

**4TH & 5TH STREETS IMPROVEMENTS
5TH STREET (UTE AVE. TO ROOD AVE.)
IMPROVEMENT PLAN**

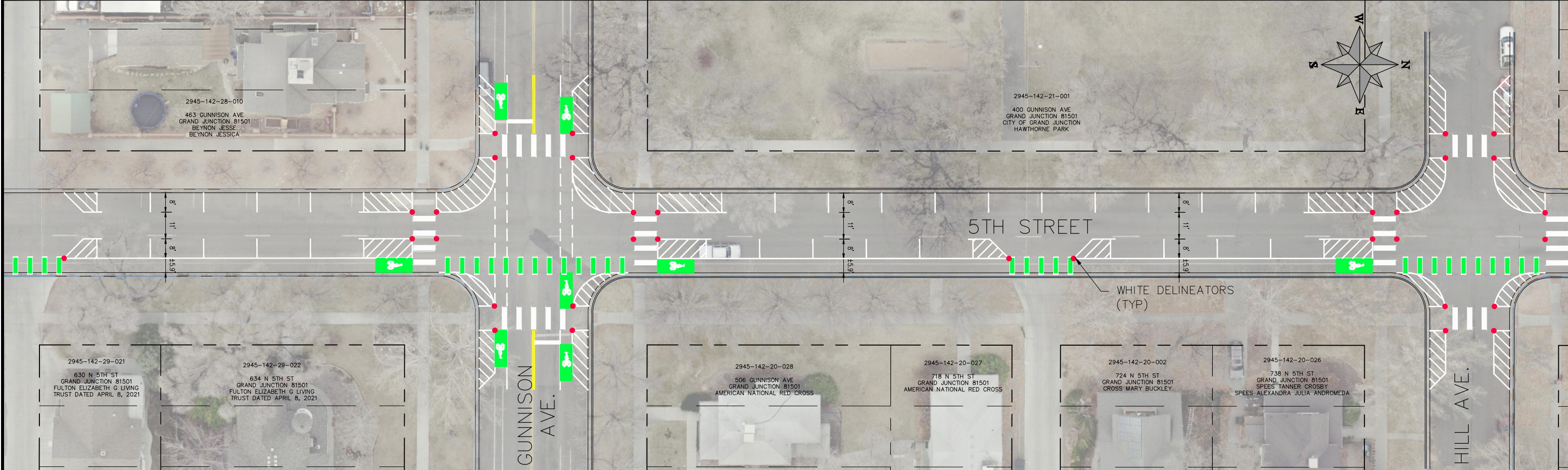
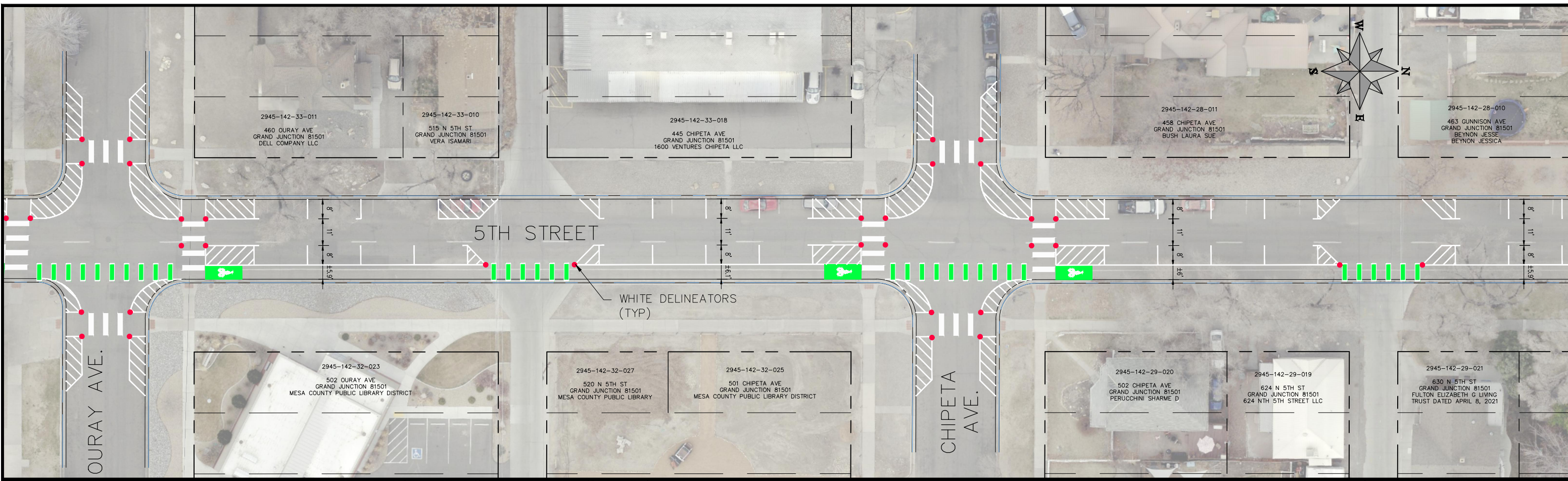


REVISION	DESCRIPTION	DATE	PROJECT NO. F2201
REVISION Δ XXX		202X	DRAWN BY DJM DATE 09/2022
REVISION Δ XXX		202X	DESIGNED BY DJM DATE 01/2023
REVISION Δ XXX		202X	CHECKED BY EM DATE 02/2023
REVISION Δ XXX		202X	APPROVED BY KH DATE 02/2023



PUBLIC WORKS
ENGINEERING DIVISION

4TH & 5TH STREETS IMPROVEMENTS
5TH STREET (ROOD AVE. TO OURAY AVE.)
IMPROVEMENT PLAN



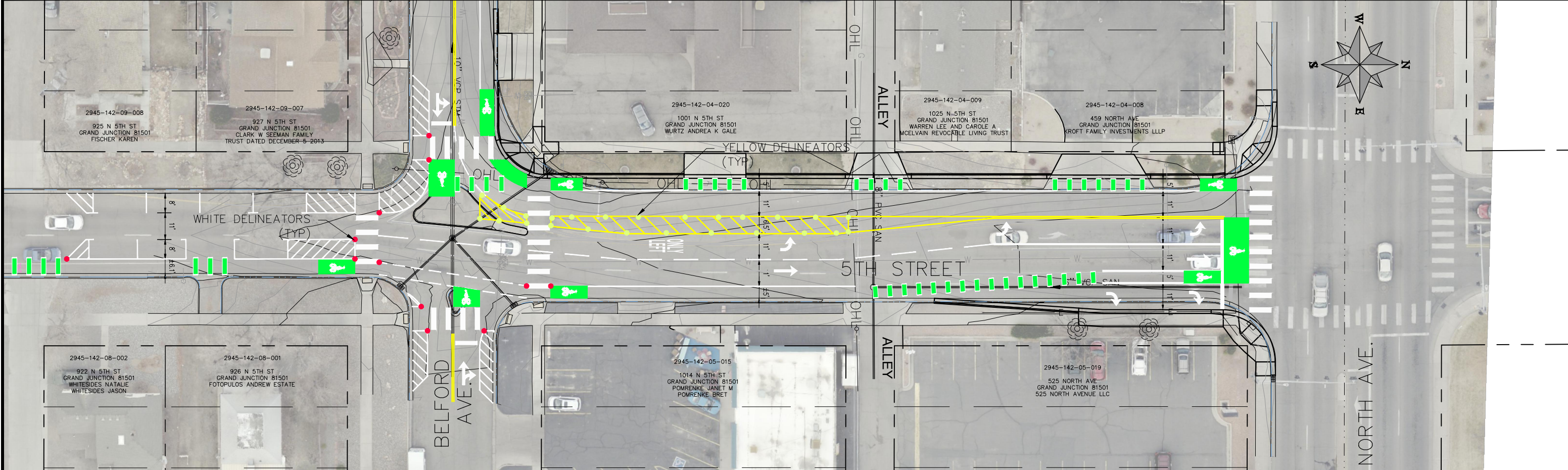
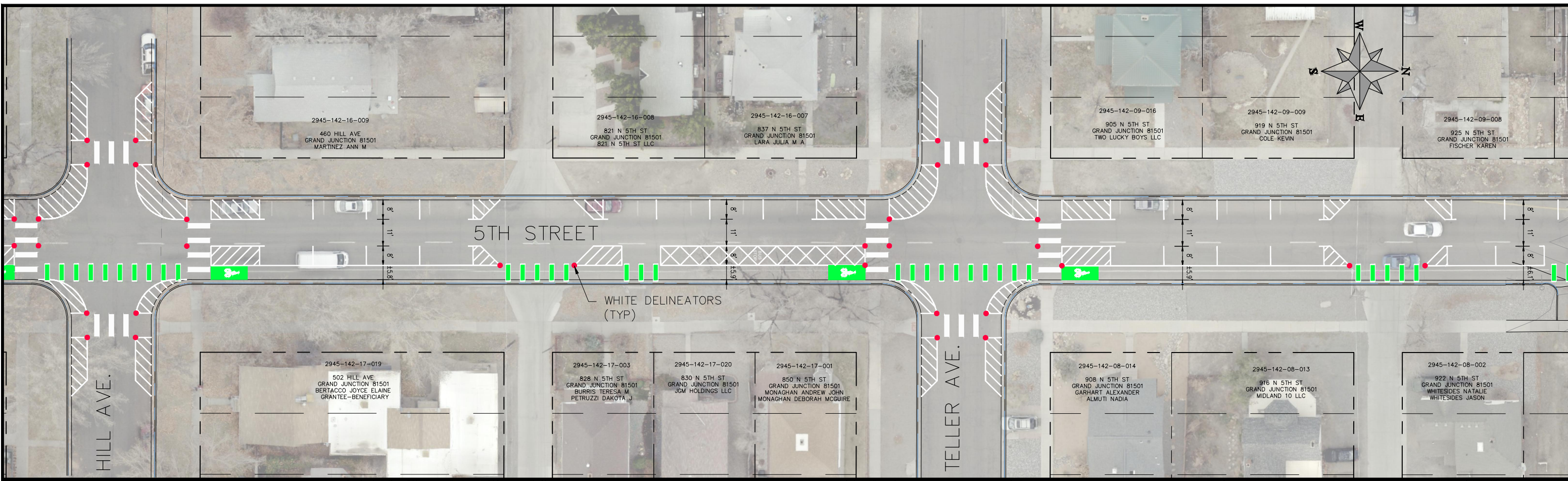
REVISION	DESCRIPTION	DATE	PROJECT NO. F2201
REVISION Δ XXX		202X	DRAWN BY DJM DATE 09/2022
REVISION Δ XXX		202X	DESIGNED BY DJM DATE 01/2023
REVISION Δ XXX		202X	CHECKED BY EM DATE 02/2023
REVISION Δ XXX		202X	APPROVED BY KH DATE 02/2023

SCALES: PLAN & PROFILE	
HORIZONTAL: 1" = 40'	0 10 20 40
VERTICAL: 1" = 10'	N/A

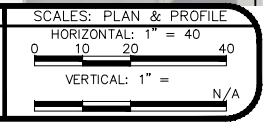


**PUBLIC WORKS
ENGINEERING DIVISION**

**4TH & 5TH STREETS IMPROVEMENTS
5TH STREET (OURAY AVE. TO HILL AVE.)
IMPROVEMENT PLAN**

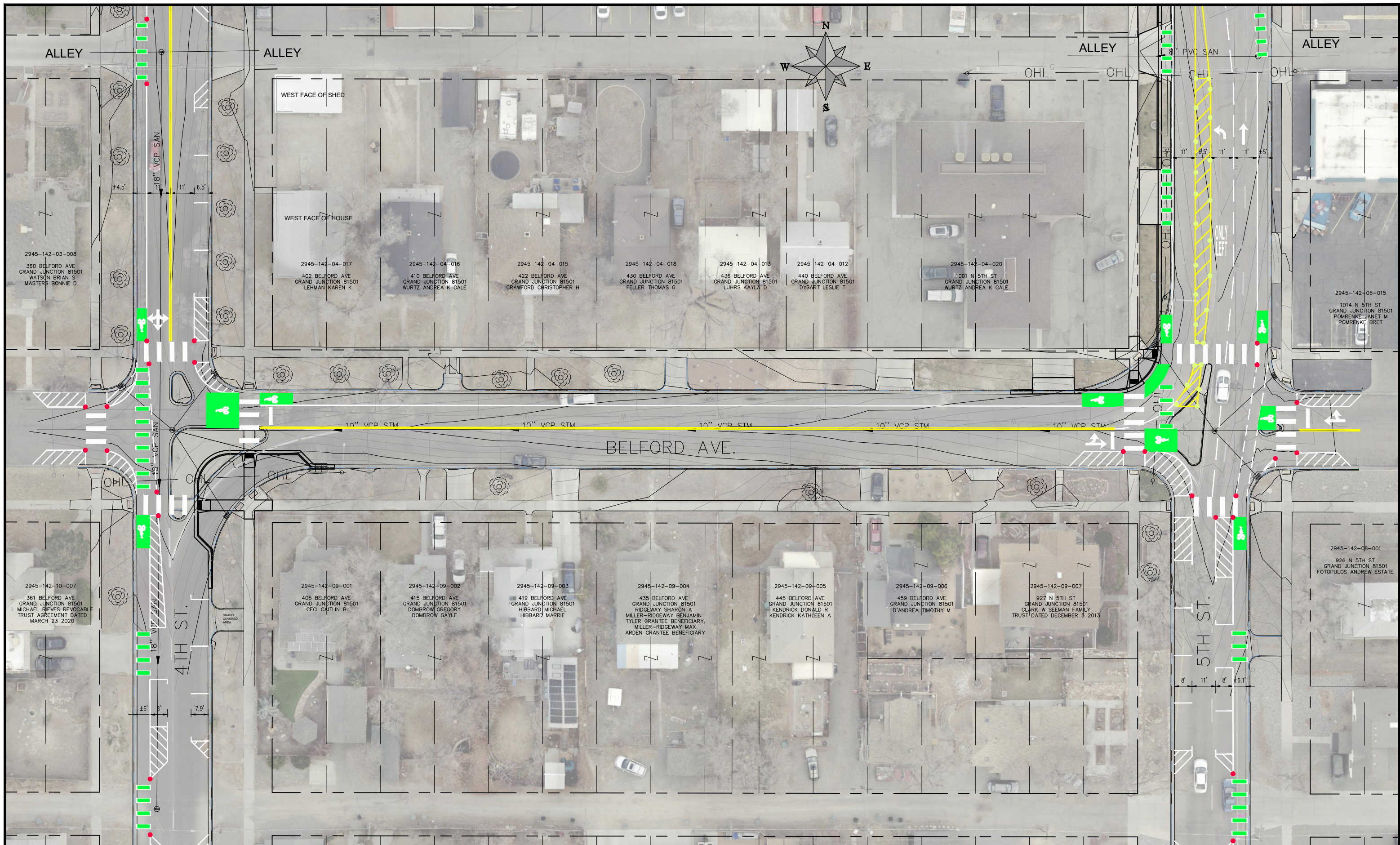


REVISION	DESCRIPTION	DATE	PROJECT NO. F2201
REVISION Δ XXX		202X	DRAWN BY DJM DATE 09/2022
REVISION Δ XXX		202X	DESIGNED BY DJM DATE 01/2023
REVISION Δ XXX		202X	CHECKED BY EM DATE 02/2023
REVISION Δ XXX		202X	APPROVED BY KH DATE 02/2023



PUBLIC WORKS
ENGINEERING DIVISION

4TH & 5TH STREETS IMPROVEMENTS
5TH STREET (HILL AVE. TO NORTH AVE.)
IMPROVEMENT PLAN



REVISION	DESCRIPTION	DATE
REVISION Δ XXX		202X
REVISION Δ XXX		202X
REVISION Δ XXX		202X
REVISION Δ XXX		202X

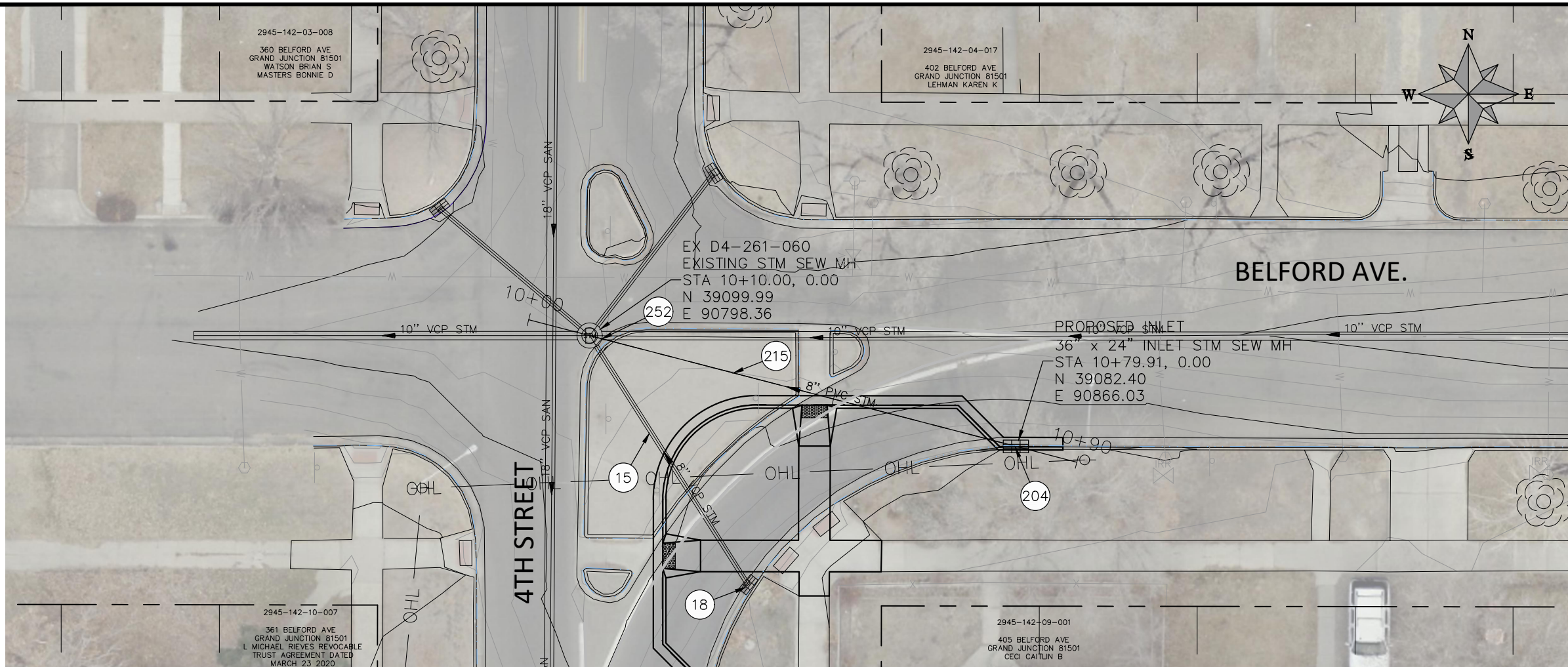
PROJECT NO.	DATE
F2201	09/2022
DESIGNED BY	01/2023
CHECKED BY	02/2023
APPROVED BY	02/2023

SCALE: PLAN & PROFILE
HORIZONTAL: 1" = 40'
VERTICAL: 1" = N/A



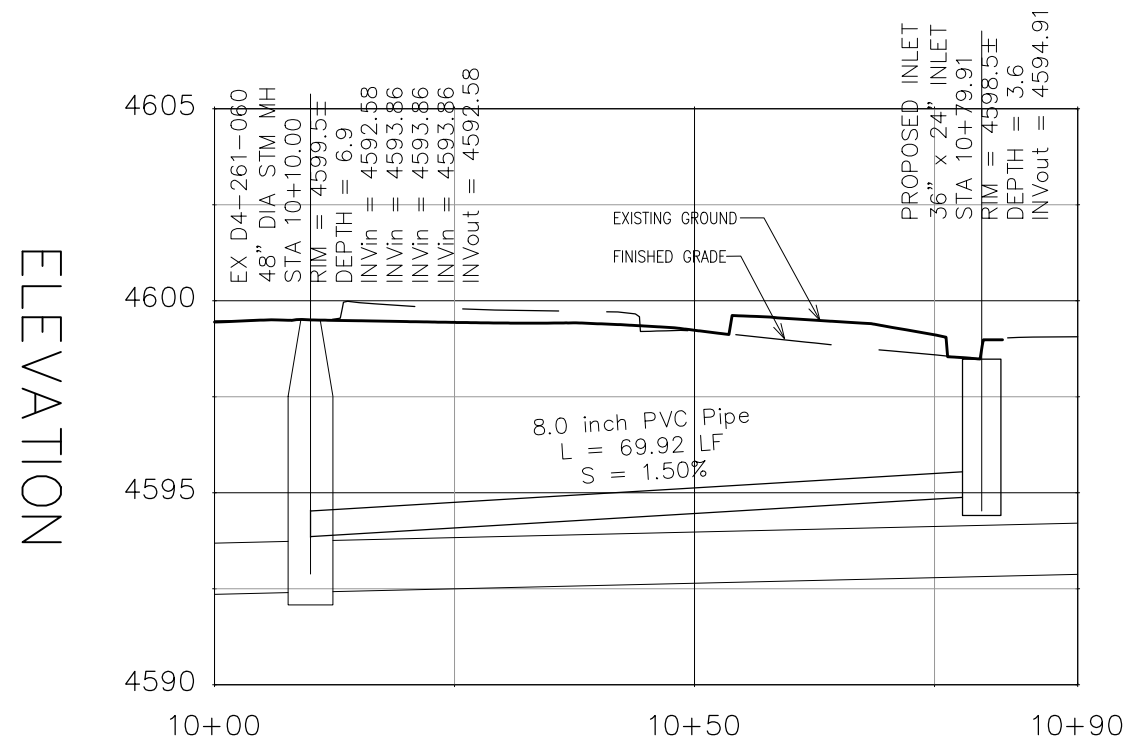
**PUBLIC WORKS
ENGINEERING DIVISION**

**4TH & 5TH STREETS IMPROVEMENTS
BELFORD AVE. (4TH ST. TO 5TH ST.)
IMPROVEMENT PLAN**



CONSTRUCTION NOTES

- 1 202 - REMOVAL OF ASPHALT MAT. CUT AND REMOVE ASPHALT AS SHOWN. (INDICATED BY DOT HATCH PATTERN)
- 15 202 - REMOVAL OF PIPE AS SHOWN. (SIZE AND TYPE AS SHOWN ON PLAN)
- 18 202 - REMOVE STORM DRAIN INLET. CONTRACTOR SHALL SALVAGE FRAME AND GRATE AND DELIVER TO CITY SHOPS.
- 204 102.13/108.6 - SINGLE STORM DRAIN INLET (VERTICAL CURB) (SEE CITY OF GRAND JUNCTION STANDARD DETAIL D-07).
- 215 102.10/108.2 - 8" STORM DRAIN PIPE (PVC). INCLUDES TYPE A BEDDING AND HAUNCHING MATERIAL AND BACKFILL OF TRENCH WITH NATIVE MATERIALS MEETING 103.16 EARTH BACKFILL MATERIAL.
- 252 102.10/108.2 - CONNECT TO EXISTING MANHOLE (8" PIPE). (SEE CITY OF GRAND JUNCTION STANDARD DETAIL D-12).



REVISION	DESCRIPTION	DATE	PROJECT NO. F2201
REVISION Δ XXX		202X	DRAWN BY DJM DATE 09/2022
REVISION Δ XXX		202X	DESIGNED BY DJM DATE 01/2023
REVISION Δ XXX		202X	CHECKED BY EM DATE 02/2023
REVISION Δ XXX		202X	APPROVED BY KH DATE 02/2023

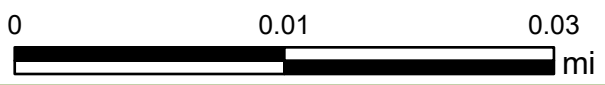
SCALES: PLAN & PROFILE	
HORIZONTAL: 1" = 20'	0 5 10 20
VERTICAL: 1" = 5'	0 1.25 2.5 5



**PUBLIC WORKS
ENGINEERING DIVISION**

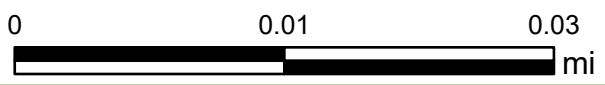
**4TH & 5TH STREETS IMPROVEMENTS
UTILITY PLAN & PROFILE - 1**

5th Street Asphalt - Belford to North



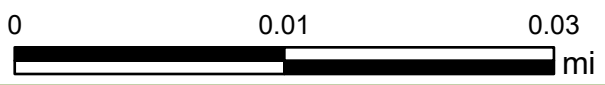
Printed: 3/21/2024
1 inch equals 47 feet
Scale: 1:564

5th Street Asphalt - Teller to Belford



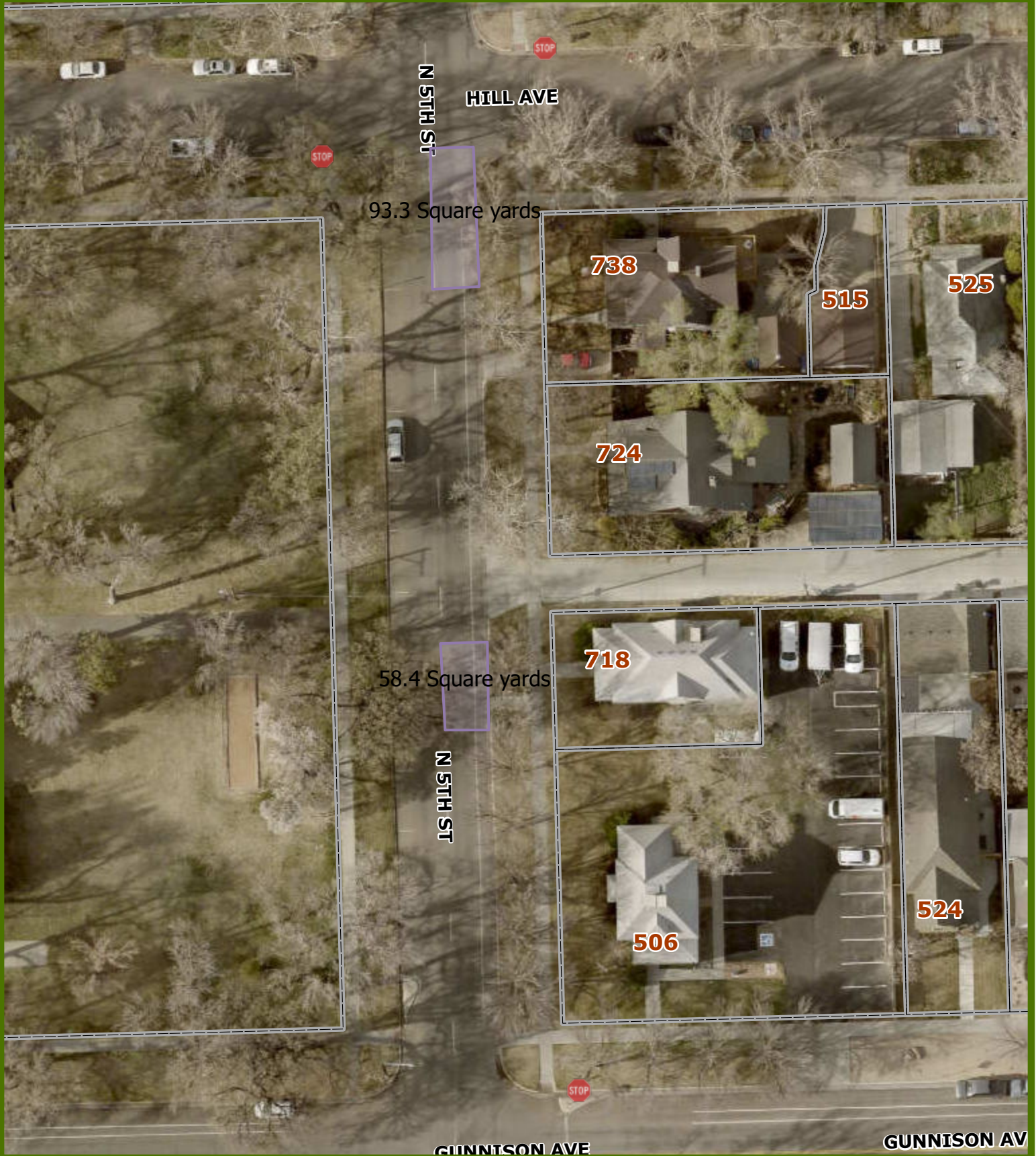
Printed: 3/21/2024
1 inch equals 47 feet
Scale: 1:564

5th Street Asphalt - Hill to Teller



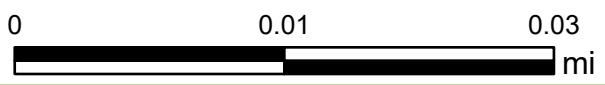
Printed: 3/21/2024
1 inch equals 47 feet
Scale: 1:564

5th Street Asphalt - Gunnison to Hill



Printed: 3/21/2024
1 inch equals 47 feet
Scale: 1:564

5th Street Asphalt - Chipeta to Gunnison



Printed: 3/21/2024
1 inch equals 47 feet
Scale: 1:564

5th Street Asphalt - Ouray to Chipeta



Printed: 3/21/2024
1 inch equals 47 feet
Scale: 1:564

5th Street Asphalt - Grand to Ouray



Printed: 3/21/2024
1 inch equals 47 feet
Scale: 1:564