



Purchasing Division

ADDENDUM NO. 1

DATE: April 11, 2024
FROM: City of Grand Junction Purchasing Division
TO: All Offerors
RE: Safe Routes to School – Sidewalk 27 Road IFB-5428-24-DD

Offerors responding to the above referenced solicitation are hereby instructed that the requirements have been clarified, modified, superseded, and supplemented as to this date as hereinafter described.

Please make note of the following clarifications:

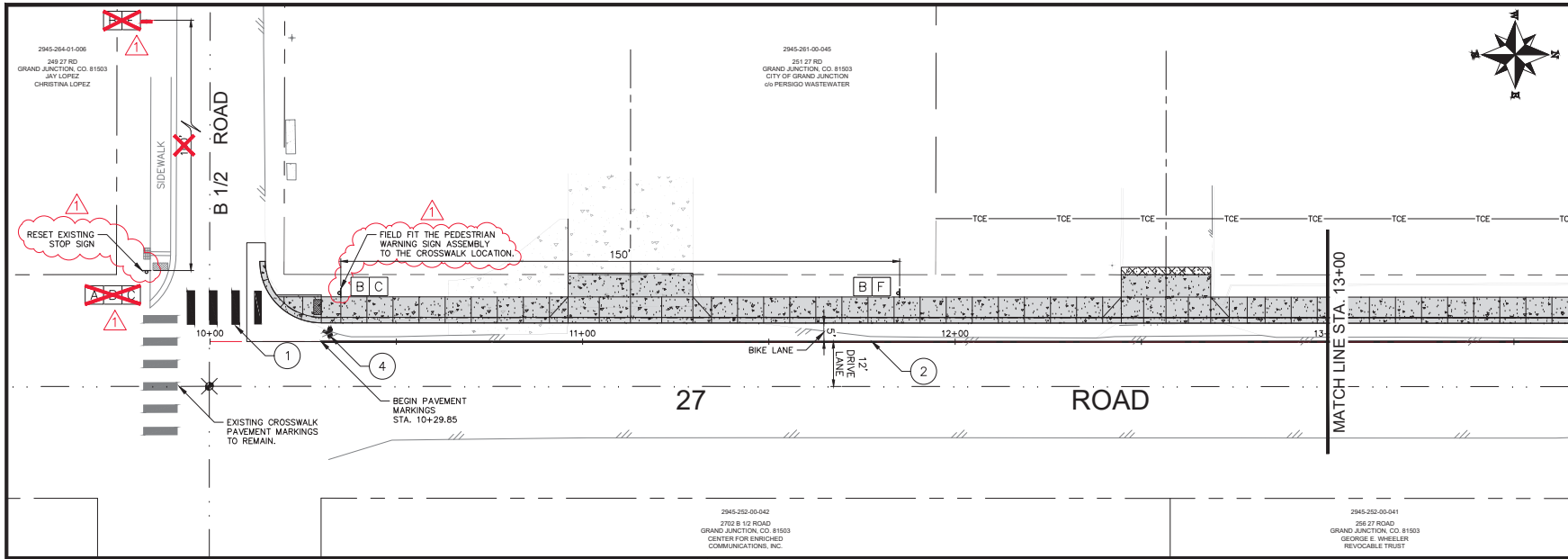
1. **Question:** Is it a requirement to keep one lane of traffic open at all times?
Answer: Yes, This is a requirement for both the north and south project segments. The project segment south of HWY 50 needs to maintain north bound traffic at all times. When possible, the Contractor should maintain two-way traffic.
2. **Question:** Can “Flagging be included as an individual line item to the Bid Schedule?
Answer: Yes, the bid schedule has been revised to include flagging (Attached)
3. **Question:** Will the City provide door hangers for the Contractor to complete public outreach?
Answer: Yes
4. **Question:** Will the City be completing the pavement striping in the Ametek parcel parking lot?
Answer: No, this work is to be performed by the Contractor.
5. **Question:** The project special in the solicitation states “Slump reads “mix design” =+/- 1.5%. Assume this was intended to read “mix design” +/- 1.5”?
Answer: This is correct, the slump can deviate by only +/- 1.5” from the mix design.
6. **Attachments**
 - Revised Pavement Markings Plan (Hwy 50 – B ½ Rd) {age 12 of Plan Set
 - Revised Pavement Markings Plan (UnawEEP – B ¾ Rd) Page 21 of Plan Set
 - Revised Pavement Markings Plan (UnawEEP – B ¾ Rd) Page 22 of Plan Set
 - Revised Bid Schedule **This must be used for submitting your bid**

The original solicitation for the project noted above is amended as noted. All other conditions of the subject remain the same.

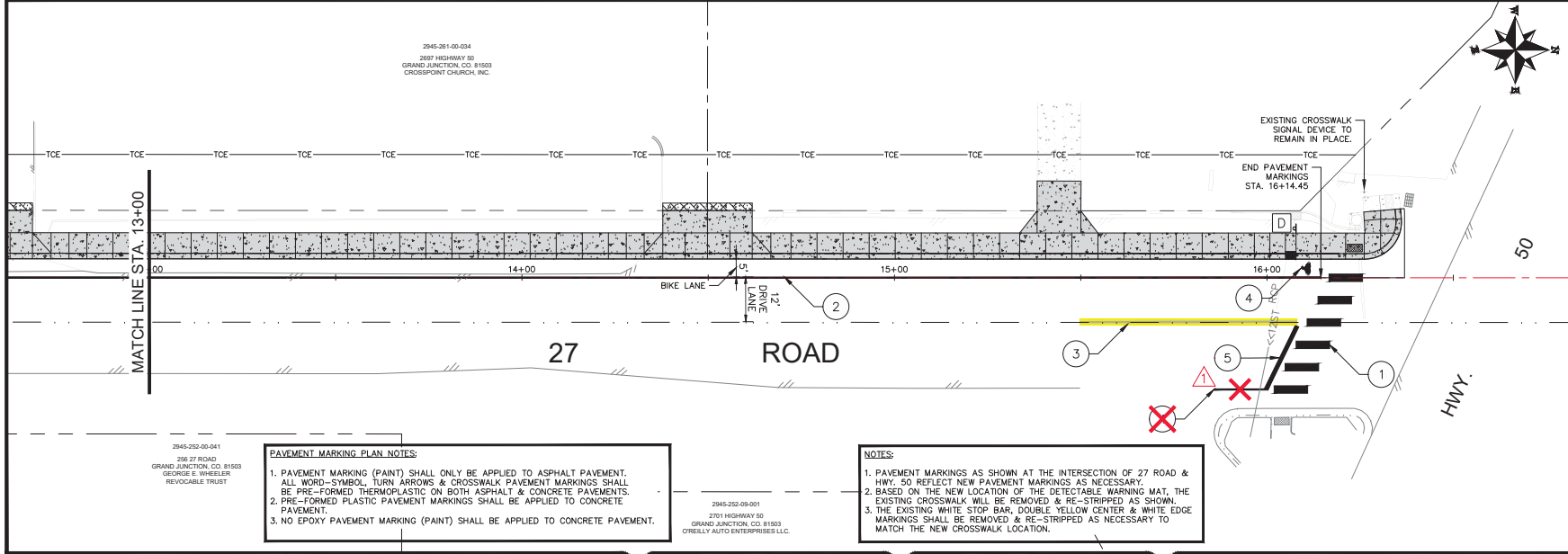
Respectfully,

A handwritten signature in blue ink that reads "Dolly Daniels".

Dolly Daniels, Senior Buyer
City of Grand Junction, Colorado



- PAVEMENT MARKINGS PLAN NOTES**
- 1 WHITE 2.5' x 9' CROSSWALK BAR PAVEMENT MARKINGS
 - 2 4" WIDE SOLID WHITE EDGE LINE PAVEMENT MARKING (BY CITY OF GRAND JUNCTION - CONTRACTOR TO COORDINATE WITH CITY CREWS)
 - 3 (2) - 4" WIDE SOLID YELLOW LINE (CENTERLINE) PAVEMENT MARKING (BY CITY OF GRAND JUNCTION - CONTRACTOR TO COORDINATE WITH CITY CREWS)
 - 4 WHITE BIKE LANE SYMBOL PAVEMENT MARKING
 - 5 12" WIDE SOLID WHITE LINE STOP BAR PAVEMENT MARKING



- SIGN LEGEND**
- A R1-1 "STOP" SIGN MOUNTED ON A STEEL SIGN POST (TYPICAL)
 - STOP
 - B MUTCD S1-1 SCHOOL ZONE SIGN MOUNTED ON A STEEL SIGN POST (TYPICAL)
 - C W16-7P DOWNWARD DIRECTIONAL ARROW SIGN MOUNTED ON A STEEL SIGN POST (TYPICAL)
 - D ~~W16-7P DOWNWARD DIRECTIONAL ARROW SIGN MOUNTED ON A STEEL SIGN POST (TYPICAL)~~
 - E ~~R1-17 BIKE LANE SIGN MOUNTED ON A STEEL SIGN POST (TYPICAL)~~
 - F W16-9P AHEAD SIGN MOUNTED ON A STEEL SIGN POST (TYPICAL)
 - AHEAD

PAVEMENT MARKING PLAN NOTES:

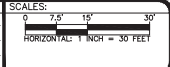
1. PAVEMENT MARKING (PAINT) SHALL ONLY BE APPLIED TO ASPHALT PAVEMENT. ALL WORD-SYMBOL, TURN ARROWS & CROSSWALK PAVEMENT MARKINGS SHALL BE PRE-FORMED THERMOPLASTIC ON BOTH ASPHALT & CONCRETE PAVEMENTS.
2. PRE-FORMED PLASTIC PAVEMENT MARKINGS SHALL BE APPLIED TO CONCRETE PAVEMENT.
3. NO EPOXY PAVEMENT MARKING (PAINT) SHALL BE APPLIED TO CONCRETE PAVEMENT.

NOTES:

1. PAVEMENT MARKINGS AS SHOWN AT THE INTERSECTION OF 27 ROAD & HWY. 50 REFLECT NEW PAVEMENT MARKINGS AS NECESSARY.
2. BASED ON THE NEW LOCATION OF THE DETECTABLE WARNING MAT, THE EXISTING CROSSWALK WILL BE REMOVED & RE-STRIPPED AS SHOWN.
3. THE EXISTING WHITE STOP BAR, DOUBLE YELLOW CENTER & WHITE EDGE MARKINGS SHALL BE REMOVED & RE-STRIPPED AS NECESSARY TO MATCH THE NEW CROSSWALK LOCATION.

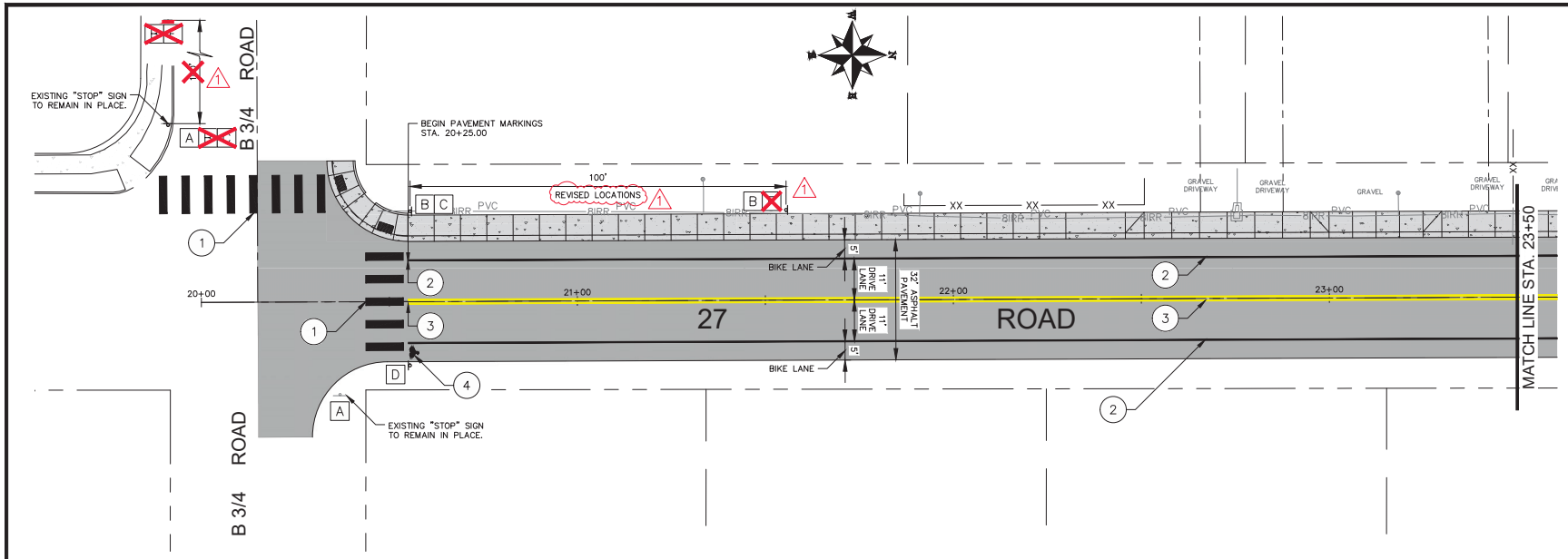
REVISION	DESCRIPTION	DATE
REVISION A	SIGN & STRIPPING REVISIONS	4/09/24
REVISION XXX		202X
REVISION XXX		202X
REVISION XXX		202X

PROJECT NO.	DATE
F200405 / F200406	03/2024
DRAWN BY: NCW	03/2024
DESIGNED BY: NCW	03/2024
CHECKED BY: LMF	03/2024
APPROVED BY: KAH	

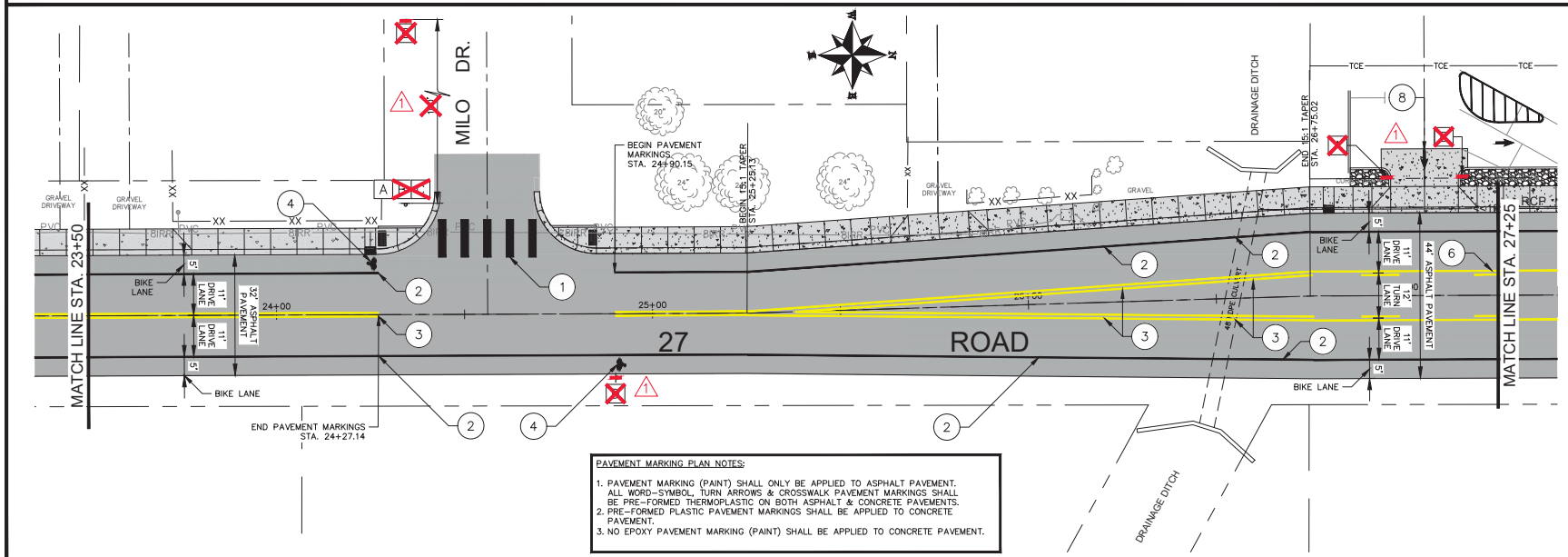


ENGINEERING & TRANSPORTATION DEPARTMENT
244 North 7th Street - Grand Junction, CO. 81501

PAVEMENT MARKINGS PLAN - STA. 10+00 TO STA. 16+50
SAFE ROUTES TO SCHOOL - 27 ROAD IMPROVEMENTS
Highway 50 - B 1/2 Road



- PAVEMENT MARKINGS PLAN NOTES**
- 1 WHITE 2' x 9' CROSSWALK BARS PAVEMENT MARKINGS
 - 2 4" WIDE SOLID WHITE EDGE LINE PAVEMENT MARKING (BY CITY OF GRAND JUNCTION - CONTRACTOR TO COORDINATE WITH CITY CREWS)
 - 3 (2) - 4" WIDE SOLID YELLOW LINE (CENTERLINE) PAVEMENT MARKING (BY CITY OF GRAND JUNCTION - CONTRACTOR TO COORDINATE WITH CITY CREWS)
 - 4 WHITE BIKE LANE SYMBOL PAVEMENT MARKING

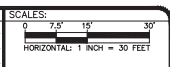


- SIGN LEGEND**
- A R1-1 STOP SIGN MOUNTED ON A STEEL SIGN POST (TYPICAL)
 - ~~STOP~~
 - B W11-2 PEDESTRIAN SIGN MOUNTED ON A STEEL SIGN POST (TYPICAL)
 - ~~W11-2~~
 - C W16-7P DOWNWARD DIRECTIONAL ARROW SIGN MOUNTED ON A STEEL SIGN POST (TYPICAL)
 - ~~W16-7P~~
 - D ~~W11-7 CROSSWALK SIGN MOUNTED ON A STEEL SIGN POST (TYPICAL)~~
 - ~~R4-17 BIKE LANE SIGN MOUNTED ON A STEEL SIGN POST (TYPICAL)~~
 - ~~R4-17 BIKE LANE SIGN MOUNTED ON A STEEL SIGN POST (TYPICAL)~~
 - ~~R4-17 BIKE LANE SIGN MOUNTED ON A STEEL SIGN POST (TYPICAL)~~
 - ~~R4-17 BIKE LANE SIGN MOUNTED ON A STEEL SIGN POST (TYPICAL)~~
 - ~~W16-9P HEAD SIGN MOUNTED ON A STEEL SIGN POST (TYPICAL)~~
 - ~~W16-9P HEAD SIGN MOUNTED ON A STEEL SIGN POST (TYPICAL)~~

- PAVEMENT MARKING PLAN NOTES:**
1. PAVEMENT MARKING (PAINT) SHALL ONLY BE APPLIED TO ASPHALT PAVEMENT. ALL WORD-SYMBOL, TURN ARROWS & CROSSWALK PAVEMENT MARKINGS SHALL BE PRE-FORMED THERMOPLASTIC ON BOTH ASPHALT & CONCRETE PAVEMENTS.
 2. PRE-FORMED PLASTIC PAVEMENT MARKINGS SHALL BE APPLIED TO CONCRETE PAVEMENT.
 3. NO EPOXY PAVEMENT MARKING (PAINT) SHALL BE APPLIED TO CONCRETE PAVEMENT.

REVISION	DESCRIPTION	DATE
REVISION A	SIGN & STRIPPING REVISIONS	4/09/24
REVISION XXX		202X
REVISION XXX		202X
REVISION XXX		202X

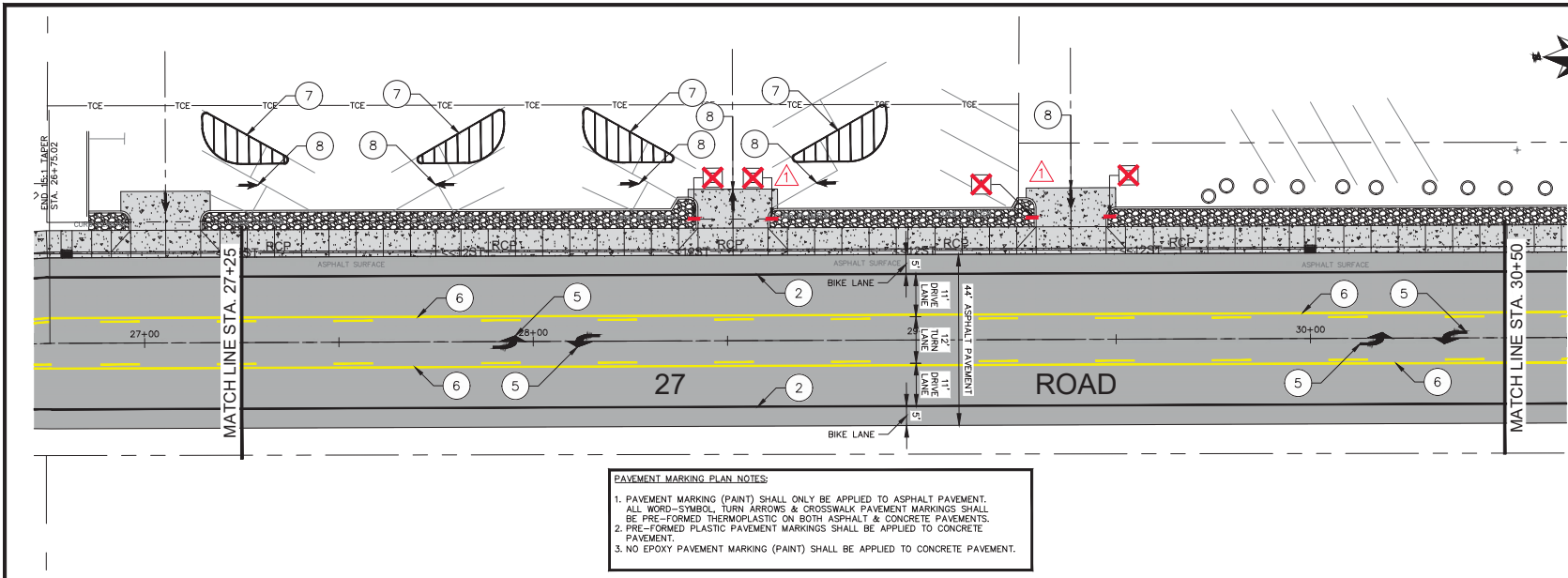
PROJECT NO.	DATE	DESIGNED BY	DATE	CHECKED BY	DATE	APPROVED BY	DATE
F200405 / F200406	03/2024	NCW	03/2024	LMF	03/2024	KAH	



ENGINEERING & TRANSPORTATION DEPARTMENT
 244 North 7th Street - Grand Junction, CO. 81501

PAVEMENT MARKINGS PLAN - STA. 20+00 TO STA. 27+25
SAFE ROUTES TO SCHOOL - 27 ROAD IMPROVEMENTS
 Unaweep Avenue - B 3/4 Road

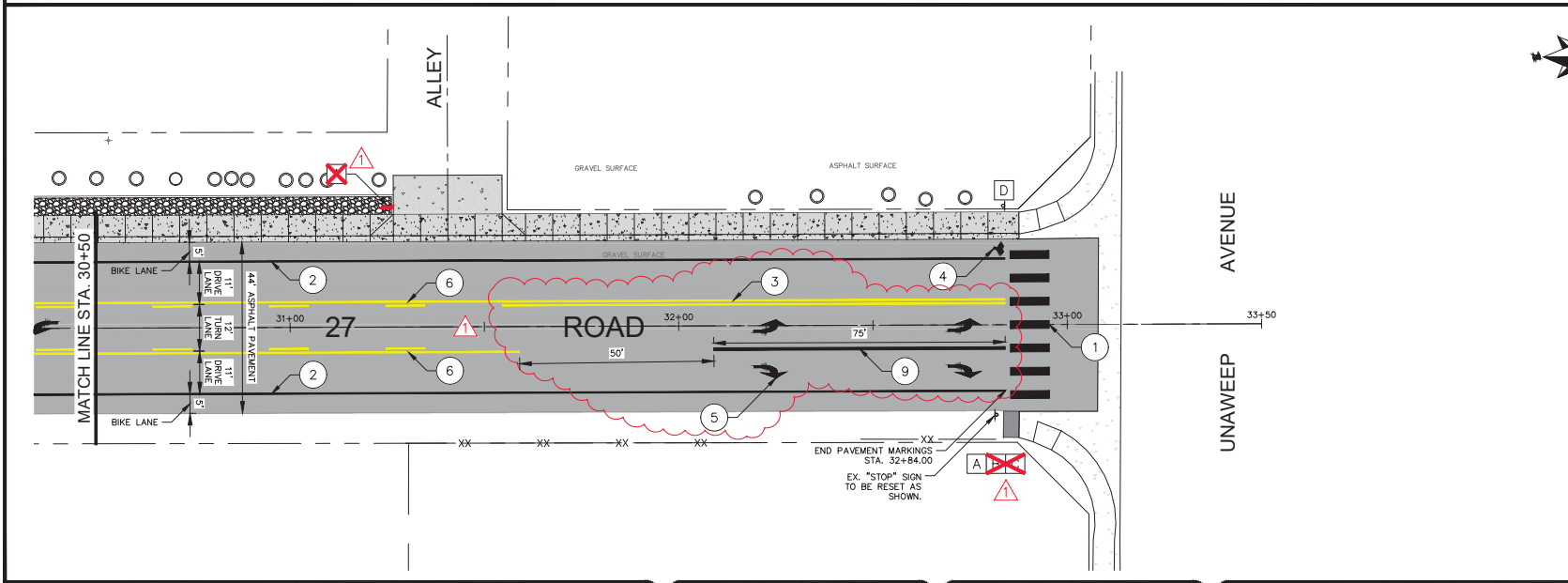
N:\EngPro\F200405-406 SRIS 27 ROAD (South of Unaweep)\South of Hwy 50\GOCAD\DESIGN\Addendum No. 1\Addendum No. 1 - Pavement Markings Plan (Unaweep - B.75).dwg - PLOTTED 4/9/2024 12:24:29 PM



PAVEMENT MARKING PLAN NOTES:

1. PAVEMENT MARKING (PAINT) SHALL ONLY BE APPLIED TO ASPHALT PAVEMENT. ALL WORD-SYMBOL, TURN ARROWS & CROSSWALK PAVEMENT MARKINGS SHALL BE PRE-FORMED THERMOPLASTIC ON BOTH ASPHALT & CONCRETE PAVEMENTS.
2. PRE-FORMED PLASTIC PAVEMENT MARKINGS SHALL BE APPLIED TO CONCRETE PAVEMENT.
3. NO EPOXY PAVEMENT MARKING (PAINT) SHALL BE APPLIED TO CONCRETE PAVEMENT.

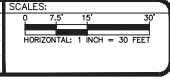
- PAVEMENT MARKINGS PLAN NOTES**
- 1 WHITE 2' x 9' CROSSWALK BARS PAVEMENT MARKINGS
 - 2 4" WIDE SOLID WHITE EDGE LINE PAVEMENT MARKING (BY CITY OF GRAND JUNCTION - CONTRACTOR TO COORDINATE WITH CITY CREWS)
 - 3 (2) - 4" WIDE SOLID YELLOW LINE (CENTERLINE) PAVEMENT MARKING (BY CITY OF GRAND JUNCTION - CONTRACTOR TO COORDINATE WITH CITY CREWS)
 - 4 WHITE BIKE LANE SYMBOL PAVEMENT MARKING
 - 5 WHITE TURN ARROW SYMBOL PAVEMENT MARKING
 - 6 (1) - 4" WIDE SOLID YELLOW LINE (1) - 4" WIDE BROKEN YELLOW LINE PAVEMENT MARKING
 - 7 3" WIDE SOLID PARKING ISLAND LINES PAVEMENT MARKINGS
 - 8 WHITE DIRECTIONAL ARROW PAVEMENT MARKING
 - 9 WHITE DIRECTIONAL ARROW PAVEMENT MARKING



- SIGN LEGEND**
- A R1-1 STOP SIGN MOUNTED ON A STEEL SIGN POST (TYPICAL)
 - STOP
 - B W11-2 PEDESTRIAN SIGN MOUNTED ON A STEEL SIGN POST (TYPICAL)
 - W11-2
 - C W16-7P DOWNWARD DIRECTIONAL ARROW SIGN MOUNTED ON A STEEL SIGN POST (TYPICAL)
 - W16-7P
 - D ~~W11-7 DIRECTIONAL SIGN MOUNTED ON A STEEL SIGN POST (TYPICAL)~~
 - ~~W11-7~~
 - ~~R4-17 BIKE LANE SIGN MOUNTED ON A STEEL SIGN POST (TYPICAL)~~
 - ~~R4-17~~
 - ~~STOP TO BE ENTER SIGN MOUNTED ON A STEEL SIGN POST (TYPICAL)~~
 - ~~STOP TO BE ENTER SIGN~~

DESCRIPTION	DATE
REVISION Δ SIGN & STRIPPING REVISIONS	4/09/24
REVISION XXX	202X
REVISION Δ XXX	202X
REVISION Δ XXX	202X

PROJECT NO. F200405 / F200406	
DRAWN BY: NCW	DATE 03/2024
DESIGNED BY: NCW	DATE 03/2024
CHECKED BY: LMF	DATE 03/2024
APPROVED BY: KAH	DATE



ENGINEERING & TRANSPORTATION DEPARTMENT
 244 North 7th Street - Grand Junction, CO. 81501

PAVEMENT MARKINGS PLAN - STA. 27+25 TO STA. 33+50
SAFE ROUTES TO SCHOOL - 27 ROAD IMPROVEMENTS
 Unaweep Avenue - B 3/4 Road

N:\EngPro\F200405-406 SRTS 27 ROAD (South of Unaweep)\South of Hwy 50\GOCAD\DESIGN\Addendum No. 1\Addendum No. 1 - Pavement Markings Plan (Unaweep - B.75).dwg - PLOTTED 4/9/2024 12:53:01 PM

Bid Schedule: Safe Routes to School (SRTS) - 27 Road Improvements Addendum No. 1

Item No.	CDOT, City Ref.	Description	Quantity	Units	Unit Price	Total Price
1	108.2	8" Storm Pipe (PVC SDR21)	8.	LF	\$ _____	\$ _____
2	108.2	12" Storm Pipe (HDPE)	18.	LF	\$ _____	\$ _____
3	108.2	12" Storm Pipe (RCP Class 3)	320.	LF	\$ _____	\$ _____
4	108.5	Single Storm Drain Inlet (Vertical Curb) (24"x36") City of Grand Junction Std. Detail D-07	4.	EA	\$ _____	\$ _____
5	108.2	Connection to Existing 8" Irrigation Line (Tee 8"x8"x8" - PVC SDR21)	1.	EA	\$ _____	\$ _____
6	108.2	Connection to Existing 48" HDPE Culvert	1.	EA	\$ _____	\$ _____
7	108.2	Adjust Existing Irrigation Structures (Provide ADA Compliant Cover & Frame.) (Adjust to Match New Sidewalk Elevations.)	2.	EA	\$ _____	\$ _____
8	108.2	Adjust Catch Basin Frame & Grate (Includes Elevation Adjustments)	1.	EA	\$ _____	\$ _____
9	202	Removal of Asphalt Mat (Full Depth)	3,933.	SY	\$ _____	\$ _____
10	202	Removal of Asphalt Mat (Planing)	2,745.	SY	\$ _____	\$ _____
11	202	Remove Existing Concrete (Includes Curb & Gutter, Sidewalk & Pavement)	130.	SY	\$ _____	\$ _____
12	202	Remove Existing Curb Storm Inlet (Remove Frame, Grate & Structure)	1.	EA	\$ _____	\$ _____
13	202	Remove Storm Inlet (Remove Frame, Grate & Structure Complete)	1.	EA	\$ _____	\$ _____
14	202	Removal of Existing Landscape Borders (Includes Concrete Curbing, Ground Cover & Underlying Barrier)	526.	SF	\$ _____	\$ _____
15	202	Removal of Existing Shrubs	1.	LS	\$ _____	\$ _____
16	202	Clear & Grub Existing Vegetation from Fence Line	1.	LS	\$ _____	\$ _____
17	203	Unclassified Excavation	1,780.	CY	\$ _____	\$ _____
18	203	Unclassified Embankment	211.	CY	\$ _____	\$ _____
19	203	Muck Excavation (Subgrade Stabilization as directed by Project Engineer)	446.	CY	\$ _____	\$ _____
20	208	Storm Drain Inlet Protection (Type II)	5.	EA	\$ _____	\$ _____
21	208	Concrete Washout Facility	1.	EA	\$ _____	\$ _____
22	210	Remove & Reset Fence	237.	LF	\$ _____	\$ _____
23	210	Remove & Reset Mailbox	5.	EA	\$ _____	\$ _____
24	210	Reset Sign	2.	EA	\$ _____	\$ _____
25	210	Reset Water Meter	2.	EA	\$ _____	\$ _____

Bid Schedule: Safe Routes to School (SRTS) - 27 Road Improvements

Item No.	CDOT, City Ref.	Description	Quantity	Units	Unit Price	Total Price
26	210	Reset Water Valve	5.	EA	\$ _____	\$ _____
27	210	Reset Sanitary Sewer Frame & Lid	2.	EA	\$ _____	\$ _____
28	212	Landscape Rock (1" Min. Size) (4" Thick)	287.	SY	\$ _____	\$ _____
29	304	Class 3 Aggregate Base Course	549.	TON	\$ _____	\$ _____
30	304	Class 6 Aggregate Base Course	2,336.	TON	\$ _____	\$ _____
31	306	Reconditioning (6" Deep) (Below HMA)	1,556.	SY	\$ _____	\$ _____
32	306	Reconditioning (12" Depth) (Areas below C-02 & C-11)	521.	SY	\$ _____	\$ _____
33	401	Hot Mix Asphalt (5" Thick) (Grading SX, 75 Binder Grade, PG 64-22) (One (1) - 3" Lift & One (1) - 2" Lift)	1,008	TON	\$ _____	\$ _____
34	401	Hot Mix Asphalt (2" & Variable Thickness) (Grading SX, 75 Binder Grade, PG 64-22) (One (1) - 2" Lift)	302	TON	\$ _____	\$ _____
35	420	Geotextile Separator (CI 2) (Subgrade Stabilization as directed by Project Engineer)	840.	SY	\$ _____	\$ _____
36	608	Monolithic Concrete Barrier Curb - (6" W x 18" D)	1,828.	LF	\$ _____	\$ _____
37	608	Concrete Curb Ramp (Type 2) (Small Radius with Vertical Curb) (15' Radius) for crossings in one direction Per CDOT Std. Plan No. M-608-1 (Std. Sht. 5)	30.7	SY	\$ _____	\$ _____
38	608	Concrete Curb Ramp (Type 2) (Large Radius with Vertical Curb) (20' Radius) (Per CDOT Std. Plan No. M-608-1, Std. Sht. 5)	9.	SY	\$ _____	\$ _____
39	608	Monolithic Vertical Concrete Curb, Gutter & Sidewalk (City of Grand Junction Std. C-02)	1,220.	SY	\$ _____	\$ _____
40	608	Driveway - Monolithic Vertical Concrete Curb, Gutter & Sidewalk (8" Thick) (Commercial Driveway / Alley) (City of Grand Junction Std. C-08 & C-11)	183.	SY	\$ _____	\$ _____
41	608	Concrete Pavement (Class GV-B) (8" Thick) (Commercial Driveways/Alley behind Sidewalk)	155.	SY	\$ _____	\$ _____
42	608	Concrete Sidewalk (4" Thick) (Replacement Sidewalk East Entrance - Crosspoint)	192.	SY	\$ _____	\$ _____

Bid Schedule: Safe Routes to School (SRTS) - 27 Road Improvements

Item No.	CDOT, City Ref.	Description	Quantity	Units	Unit Price	Total Price
43	608	Detectable Warnings (Per CDOT M&S Std. Plan M-608-1, Sht. 9)	6.	EA	\$ _____	\$ _____
44	614	W11-2 Pedestrian Sign (Include 10' 3# Channel Post & Installation Hardware)	1.	EA	\$ _____	\$ _____
45	614	W11-2 Pedestrian Sign / W16-7P Downward Directional Arrow Sign (Include 14' 3# Channel Post & Installation Hardware)	2.	EA	\$ _____	\$ _____
46	614	R3-17 Bicycle Sign (Include 10' 3# Channel Post & Installation Hardware)	3.	EA	\$ _____	\$ _____
47	620	Sanitary Facility	1.	EA	\$ _____	\$ _____
48	625	Construction Surveying (Includes As-Built Drawings)	1.	LS	\$ _____	\$ _____
49	626	Mobilization	1.	LS	\$ _____	\$ _____
50	627	Pavement Marking Paint - 3" Wide White Solid Line (Parking Lot Islands) (Includes removal of existing striping as directed by Project Engineer)	412.	LF	\$ _____	\$ _____
51	627	Pavement Marking Paint - White Directional Arrow Symbol (Parking Lot)	6.	EA	\$ _____	\$ _____
52	627	Preformed Thermoplastic Pavement Marking - White Left Turn Arrow Symbol	6.	EA	\$ _____	\$ _____
53	627	Preformed Thermoplastic Pavement Marking - Bike Lane Symbol	6.	EA	\$ _____	\$ _____
54	627	Pre-Formed Thermoplastic - 12" Wide White Stopbar Marking	19.	SF	\$ _____	\$ _____
55	627	Pre-Formed Thermoplastic - 24" Wide White Crosswalk Marking	630.	SF	\$ _____	\$ _____
56	630	Traffic Control (Complete in Place)	1.	LS	\$ _____	\$ _____
57	630	Flagging	60.	DAY	\$ _____	\$ _____
MCR		Minor Contract Revisions	---	---	---	\$ <u>30,000.00</u>

Bid Amount: \$ _____

Bid Amount: _____

dollars