

Basis of Bearings:

Bearings are based on a line between 2 survey control points. The southerly control point is a number 5 rebar in a pile of rocks and the northerly control point is a 60d nail. The bearing is N24°49'18"W with a distance of 1636.97 feet.

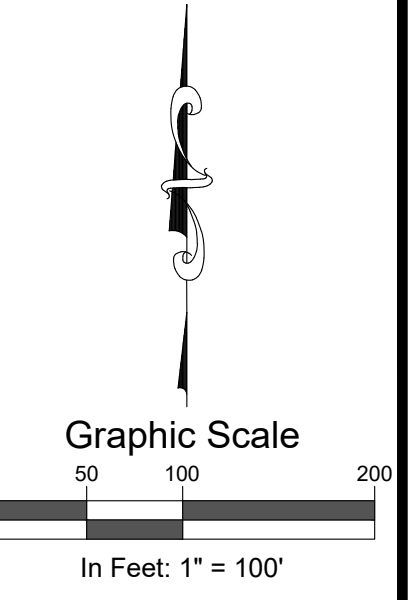
Coordinate System & Elevation:

The coordinate system is local and referred to as Juniata. Elevation benchmark is the 60d nail at the northerly end of the bearings line, 10243.2'.

Above information added 10-11-22 by Renee B. Parent.

Control Point Table

Point #	Elevation	Northing	Easting	Description
82	10243.20	23568.34	37612.20	CP-60D Nail
81	10245.90	22082.60	38299.39	CP-#5 Rebar in Rocks



SGM
 259 Grand Ave., Suite 200
 Grand Junction, CO 81501
 970.245.2571
 www.sgm-inc.com



Hallenbeck Reservoir #2
 Mesa County, CO
 Water Division No. 4, District 42
 Dam ID 420126

#	Revision	Date	By:
1			
2			
3			

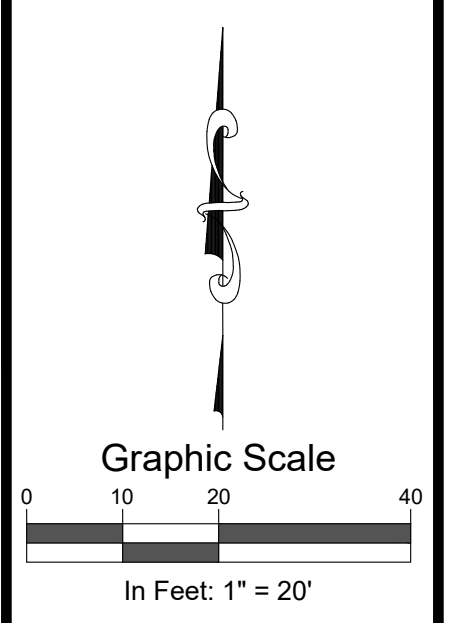
Project Milestone: For Construction

Job No: 2021-539.002
 Drawn by: [Signature]
 Print Date: 6.05.23
 QC: EK | PE: EK
 File: HB#2-ExCond

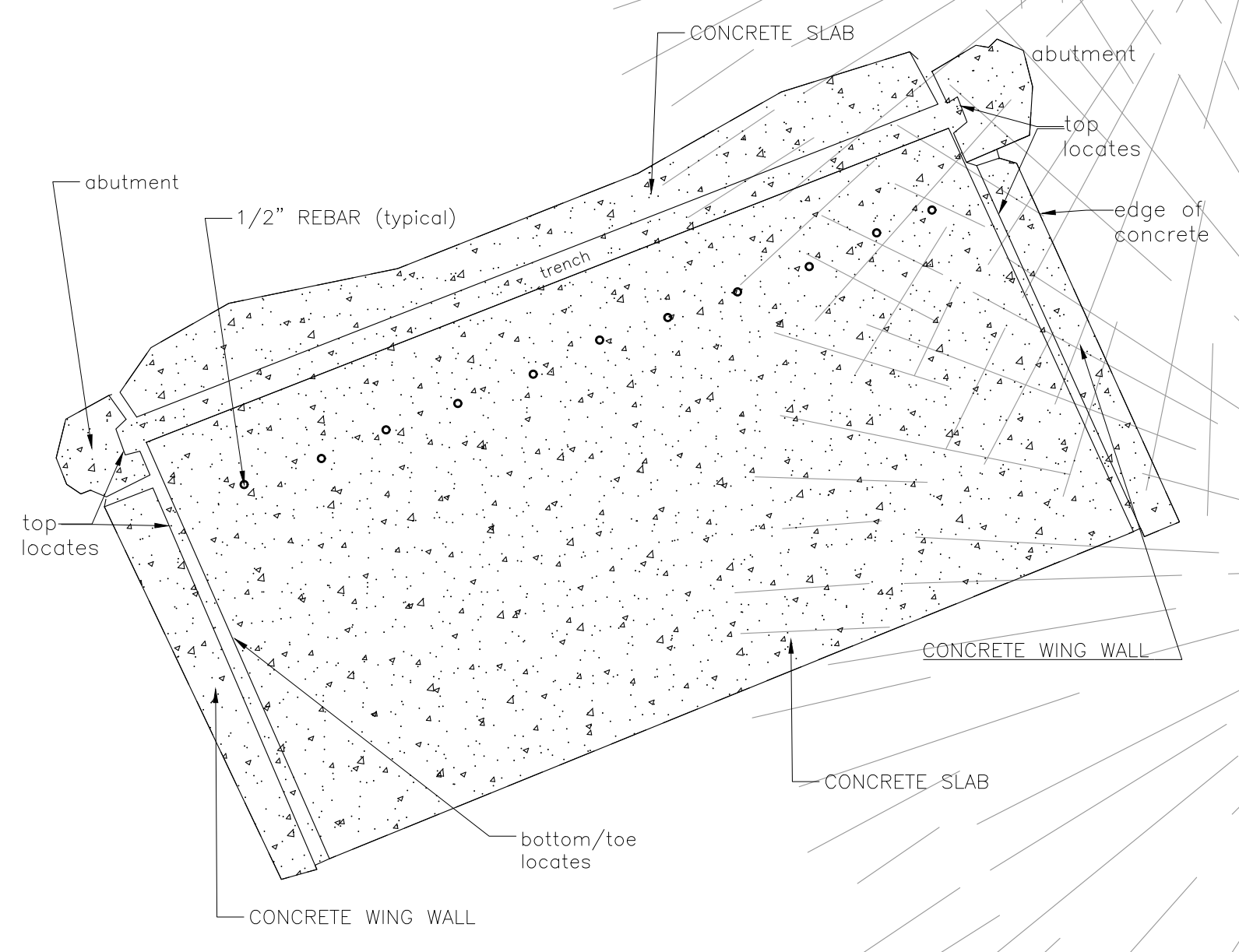
Title:
Overall Project Plan

Dwg No. **C-0402B**
 Of: 9
 3.0

I:\Grand Junction\2021\2021-539-Hallenbeckreservoir2\002SpillingDesign\1-Draws\Civil\PS-SheetSet\1\HB#2-ExCond.dwg Plotfile: 6/5/2023 4:16 PM By: Frances Blockwelder



- DEMOLITION KEY NOTES:
1. FULLY REMOVE AND PROPERLY DISPOSE OF EXISTING CONCRETE WALL AND FOUNDATION ELEMENTS.
 2. REMOVE AND STOCKPILE RIPRAP.
 3. FULLY REMOVE AND PROPERLY DISPOSE OF EXISTING CONCRETE SPILLWAY APRON.



SOUTH SPILLWAY INSET
SCALE: 1" = 2'



SGM
259 Grand Ave., Suite 200
Grand Junction, CO 81501
970.245.2571
www.sgm-inc.com



Hallenbeck Reservoir #2
Mesa County, CO
Water Division No. 4, District 42
Dam ID 420126

#	Revision	Date	By
1			
2			
3			

Project Milestone: For Construction

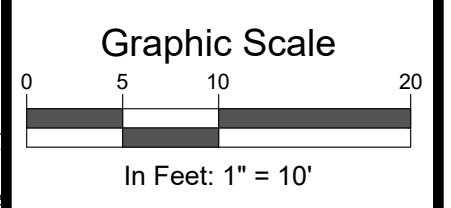
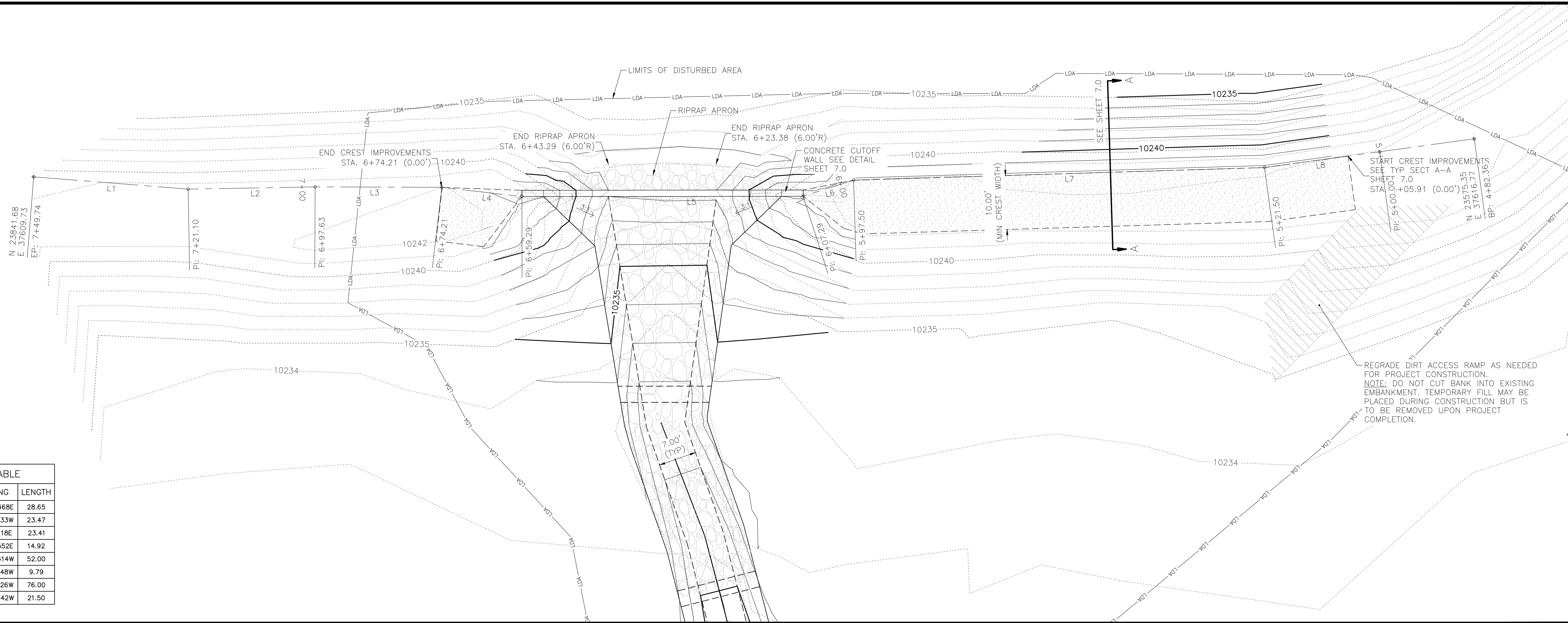
Job No. 2021-539.002
Drawn by: JS
Print Date: 6.05.23
QC: EK | PE: EK
File: HB#2-ExCond
Title:

Existing Conditions and Demolition Plan

Dwg No. **C-0402B** 4.0
Of: 9

I:\Grand Junction\2021\2021-539-HallenbeckReservoir2\002SpillingDesign\1-Draws\Civil\PS-SheetSet\1\HB#2-ExCond.dwg Plotfile: 6/5/2023 4:16 PM By: Frances Blockwelder

LINE #	BEARING	LENGTH
L1	N04.332468E	28.65
L2	N01.010533W	23.47
L3	N00.121118E	23.41
L4	N06.371552E	14.92
L5	N00.040414W	52.00
L6	N17.461948W	9.79
L7	N01.451926W	76.00
L8	N07.491842W	21.50



SGM
 259 Grand Ave., Suite 200
 Grand Junction, CO 81501
 970.245.2571
 www.sgm-inc.com



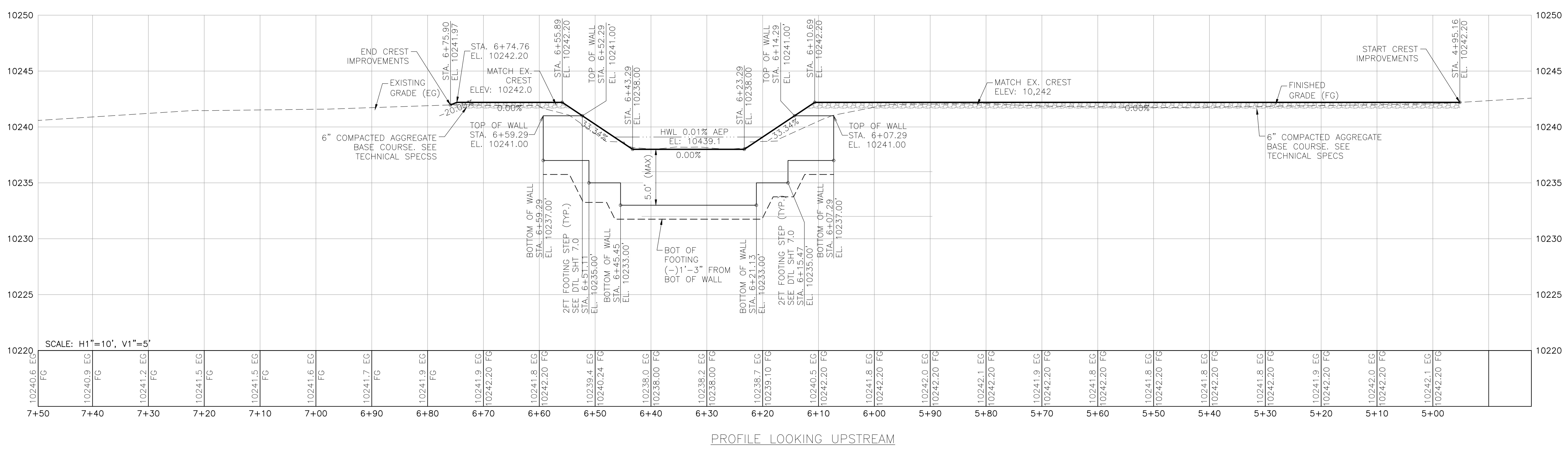
Hallenbeck Reservoir #2
 Mesa County, CO
 Water Division No. 4, District 42
 Dam ID 420126

#	Date	By	Revision
1			
2			
3			

Job No. 2021-539.002
 Drawn by: [Name]
 Print Date: 6.05.23
 QC: EK / PE / EK
 File: HB#2-SpillwayP&P

Title: Main Spillway Crest Plan and Profile

Dwg No. **5.0**
 Of: 9

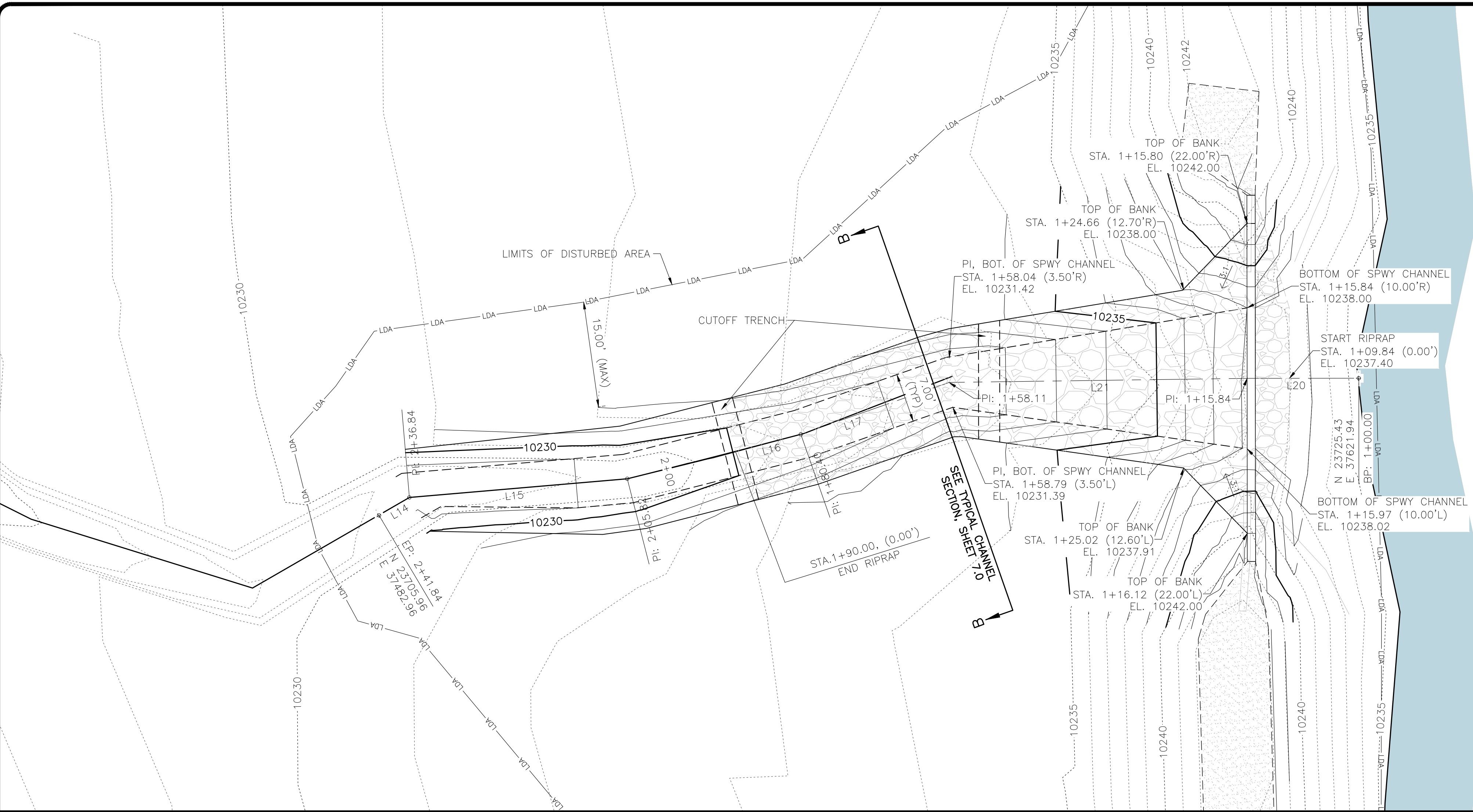


PROFILE LOOKING UPSTREAM

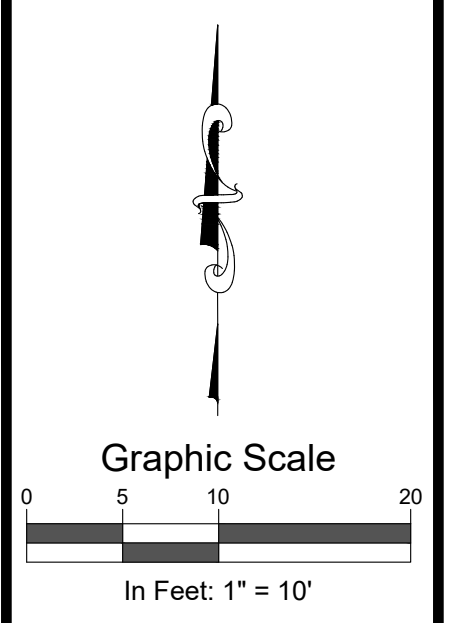
C-0402B **5.0**

I:\Grand_Junction\2021\539-HallenbeckReservoir2\0025SpillwayDesign\1-Dwg\Civil\PS-Sheet\539-SpillwayP&P.dwg, Plotted: 6/5/2023 4:16 PM By: Frances Blockwelder

I:\Grand_Junction\2021\2021-539-HallenbeckReservoir\Drawings\Spillway\SpillwayP&P.dwg Plotted: 6/5/2023 4:16 PM By: Frances Blackwelder



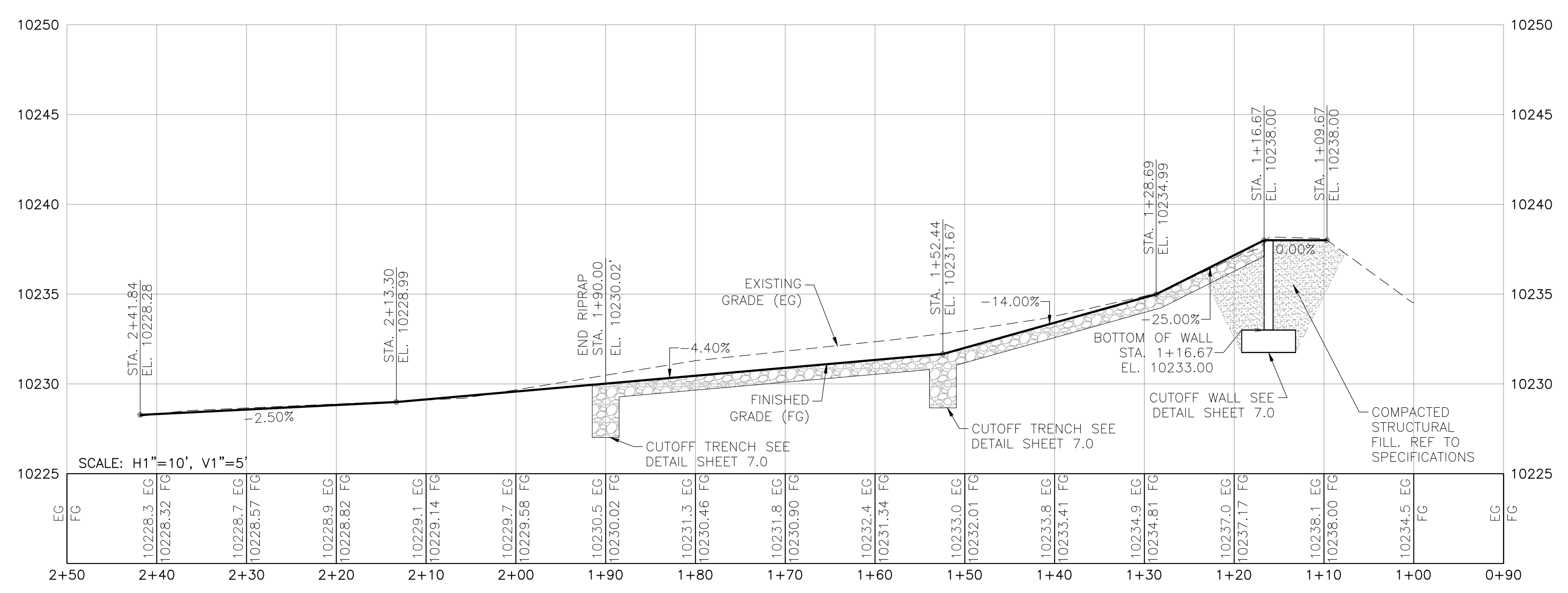
LINE TABLE		
LINE #	BEARING	LENGTH
L14	S89.192817W	5.00
L15	S85.055607W	31.02
L16	S75.365666W	25.42
L17	S70.430150W	22.29
L20	S89.565701W	15.84
L21	S89.124513W	42.27



SGM
 259 Grand Ave., Suite 200
 Grand Junction, CO 81501
 970.245.2571
 www.sgm-inc.com



Hallenbeck Reservoir #2
 Mesa County, CO
 Water Division No. 4, District 42
 Dam ID 420126



#	Revision	Date	By
1			
2			
3			

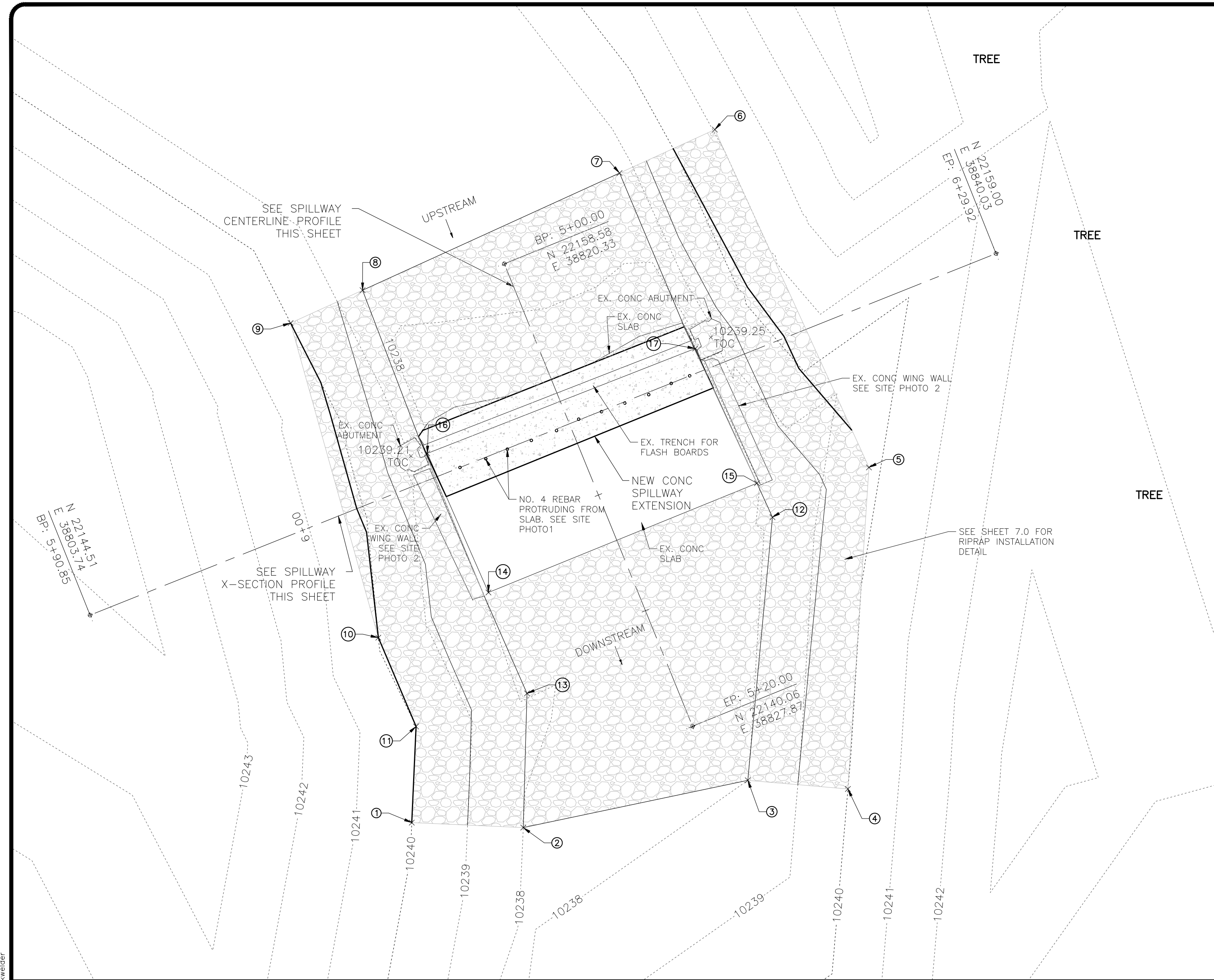
Job No. 2021-539.002
 Drawn by: [Signature]
 Print Date: 6.05.23
 QC: EK | PE: EK
 File: HB#2-SpillwayP&P

Title:
**Main Spillway
 Spillway Plan and
 Profile**

Dwg No. **6.0**
 Of: 9

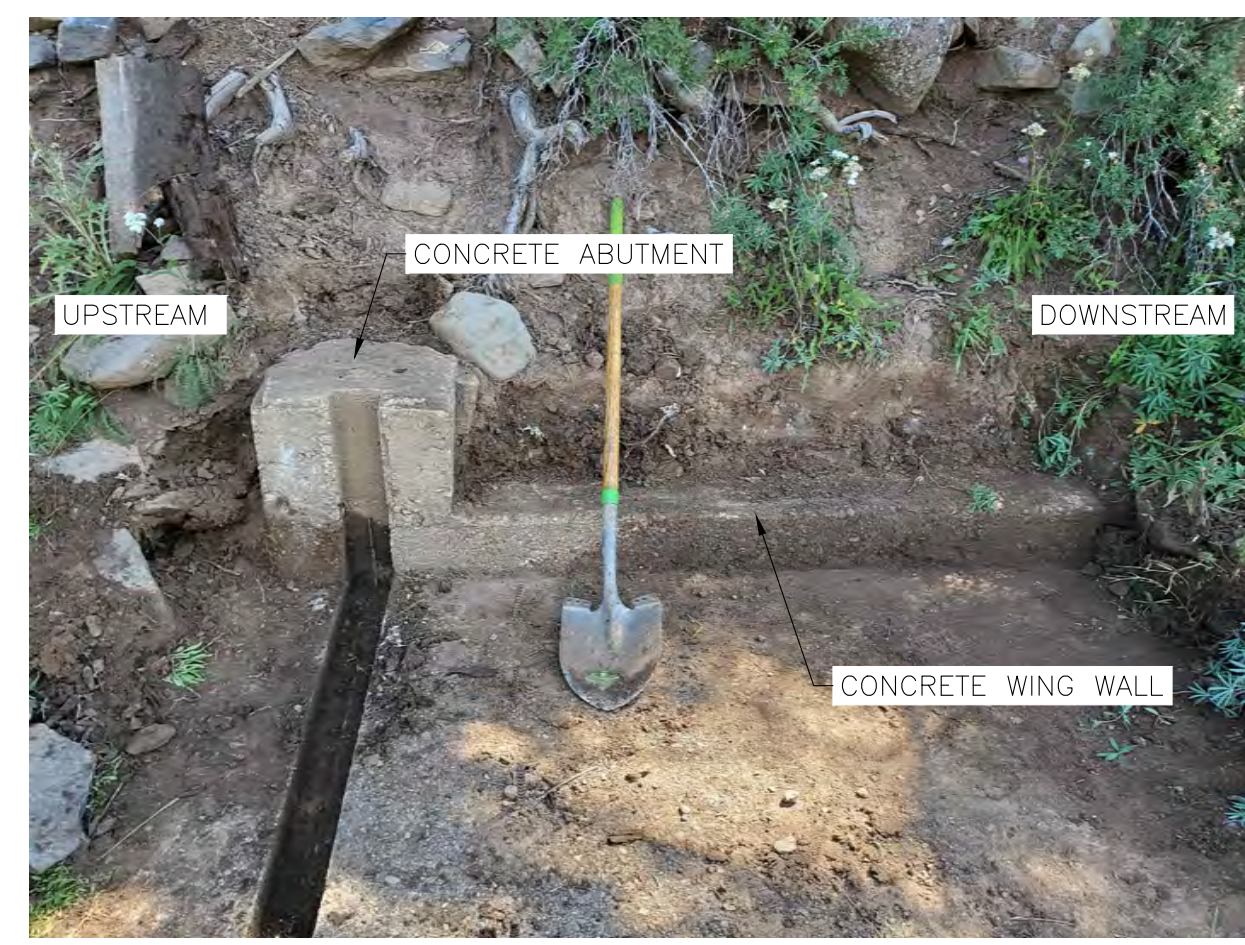
C-0402B

I:\Grand Junction\2021\539-Hallenbeckreservoir\002Spillway\Design\1-Draw\Civil\PS-Sheet\AUX-Draw\SpillwayP&P.dwg Plotted: 6/5/2023 4:17 PM By: Frances Blockwelder

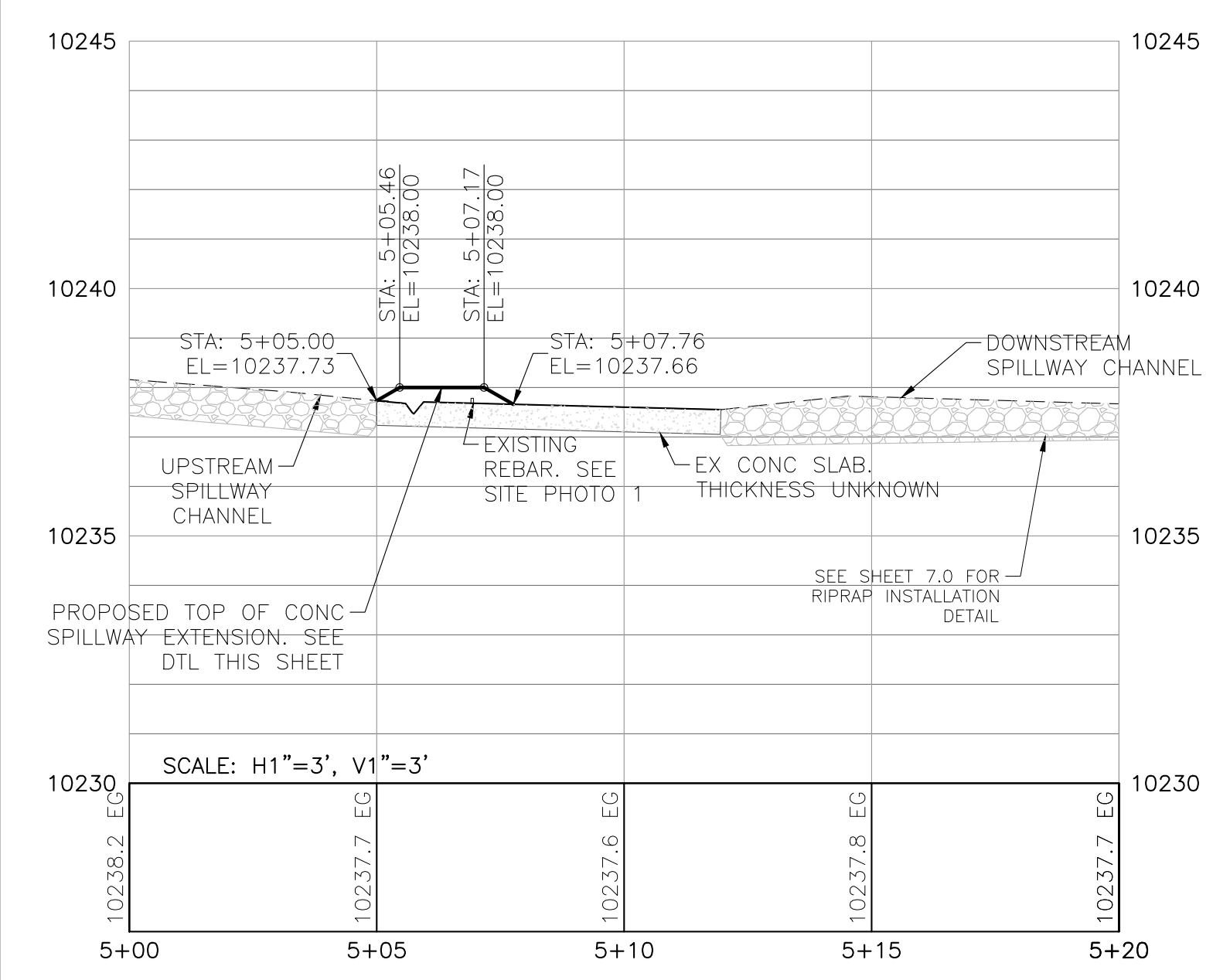


POINT TABLE

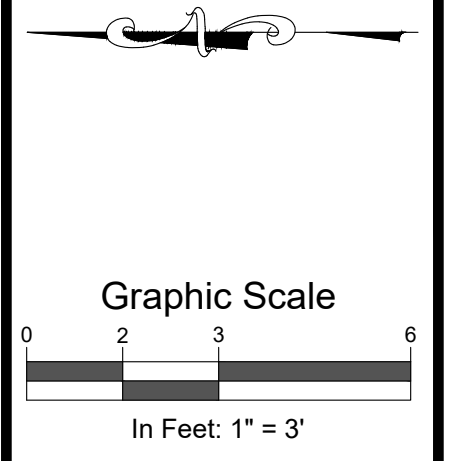
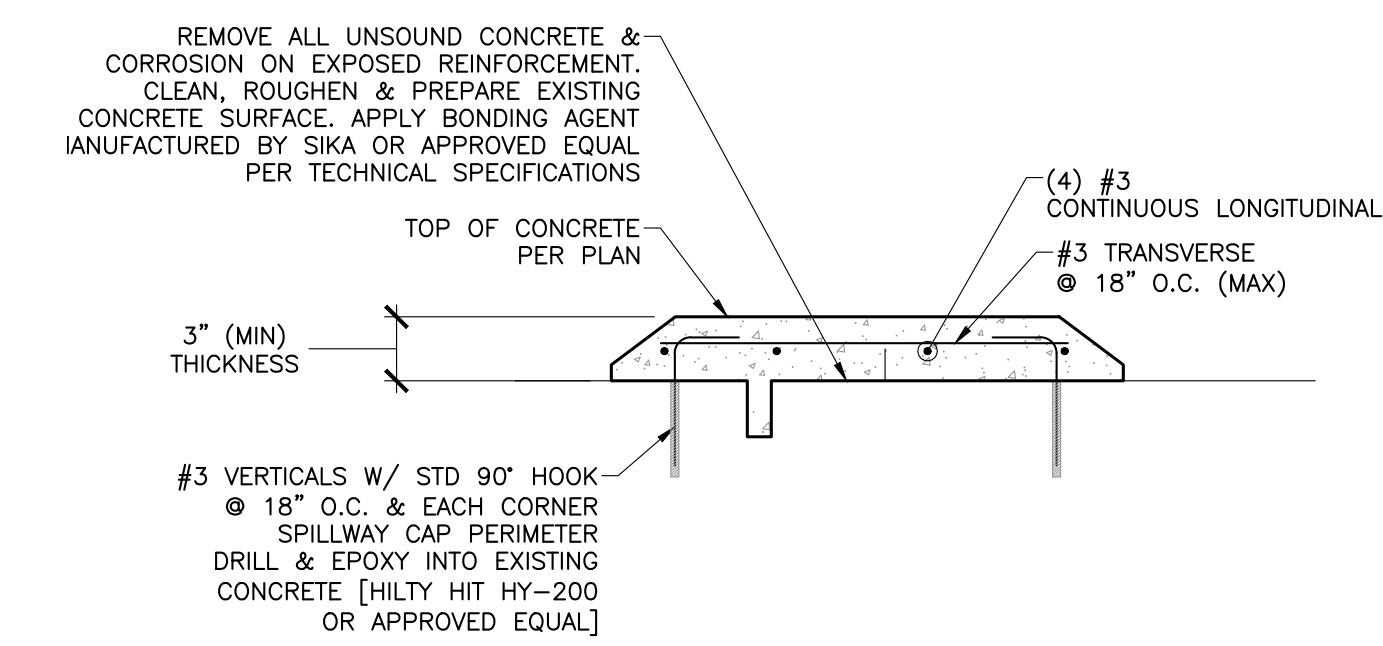
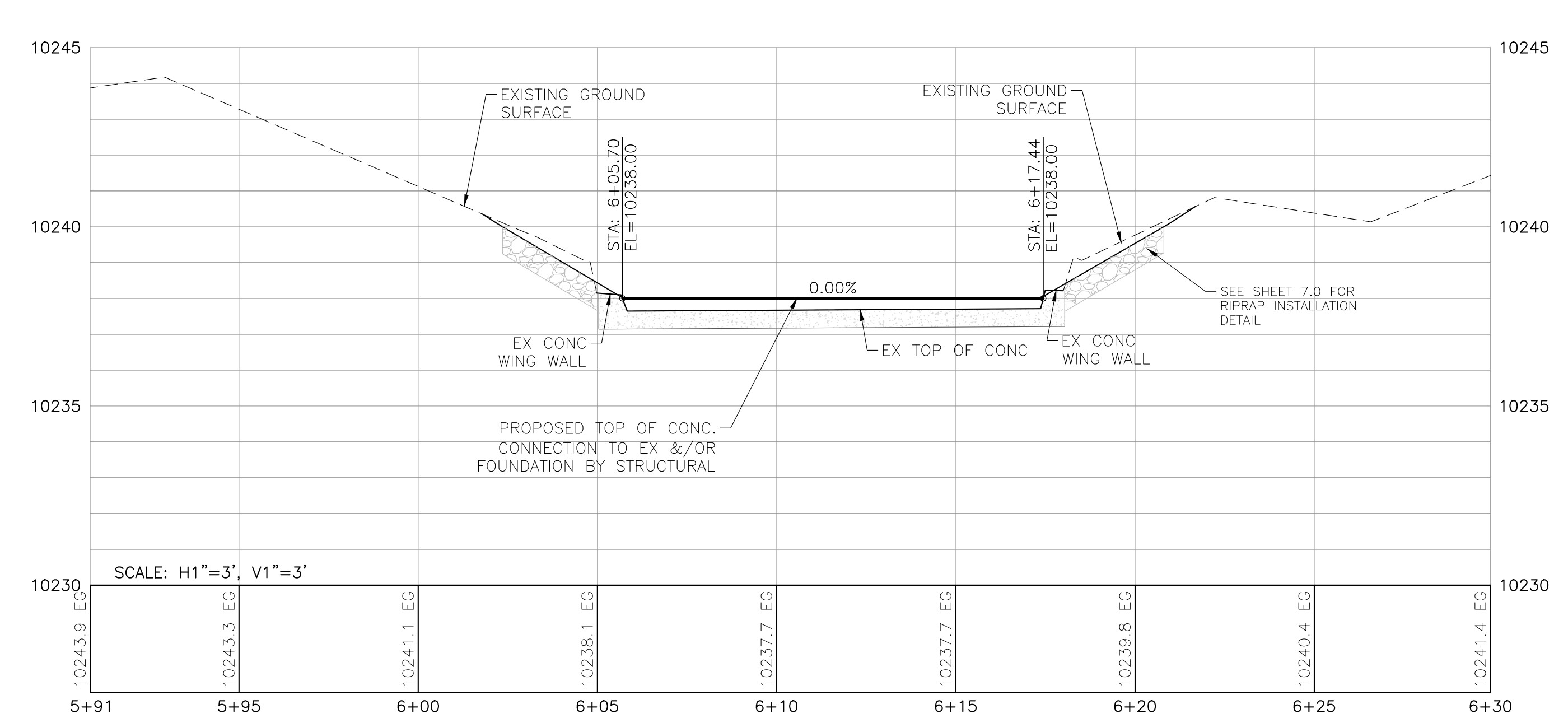
POINT #	NORTHING	EASTING	ELEVATION	DESCRIPTION
1	22136.20	38816.63	10240.00	AP ● RIPRAP
2	22136.00	38821.10	10238.00	AP ● RIPRAP
3	22137.90	38830.09	10238.00	AP ● RIPRAP
4	22137.55	38834.10	10240.00	AP ● RIPRAP
5	22150.43	38834.94	10239.79	AP ● RIPRAP
6	22163.96	38828.77	10241.04	AP ● RIPRAP
7	22162.22	38824.95	10238.00	AP ● RIPRAP
8	22157.53	38814.66	10238.00	AP ● RIPRAP
9	22156.21	38811.78	10240.00	AP ● RIPRAP
10	22143.61	38815.29	10240.00	AP ● RIPRAP
11	22140.05	38816.80	10240.00	AP ● RIPRAP
12	22148.44	38831.08	10238.00	AP ● RIPRAP
13	22141.38	38821.24	10238.00	AP ● RIPRAP
14	22145.42	38819.70	10238.00	AP ● CONC
15	22149.80	38830.45	10238.00	AP ● CONC
16	22150.99	38817.25	10238.00	AP ● CONC
17	22155.19	38827.98	10238.02	AP ● CONC



SPILLWAY CENTERLINE PROFILE



SPILLWAY X-SECTION PROFILE



SGM
259 Grand Ave., Suite 200
Grand Junction, CO 81501
970.245.2571
www.sgm-inc.com



Hallenbeck Reservoir #2
Mesa County, CO
Water Division No. 4, District 42
Dam ID 420126

#	Date	By	Revision
1			
2			
3			

Project Milestone: PRELIMINARY NOT FOR CONSTRUCTION

Job No. 2021-539.002
Drawn by: SGM
Print Date: 6.05.23
QC: EK / PE: EK
File: HB#2-AuxSpillwayP&P

South Spillway Rehabilitation

Dwg No. **C-0402B**
9.0
Of: 9