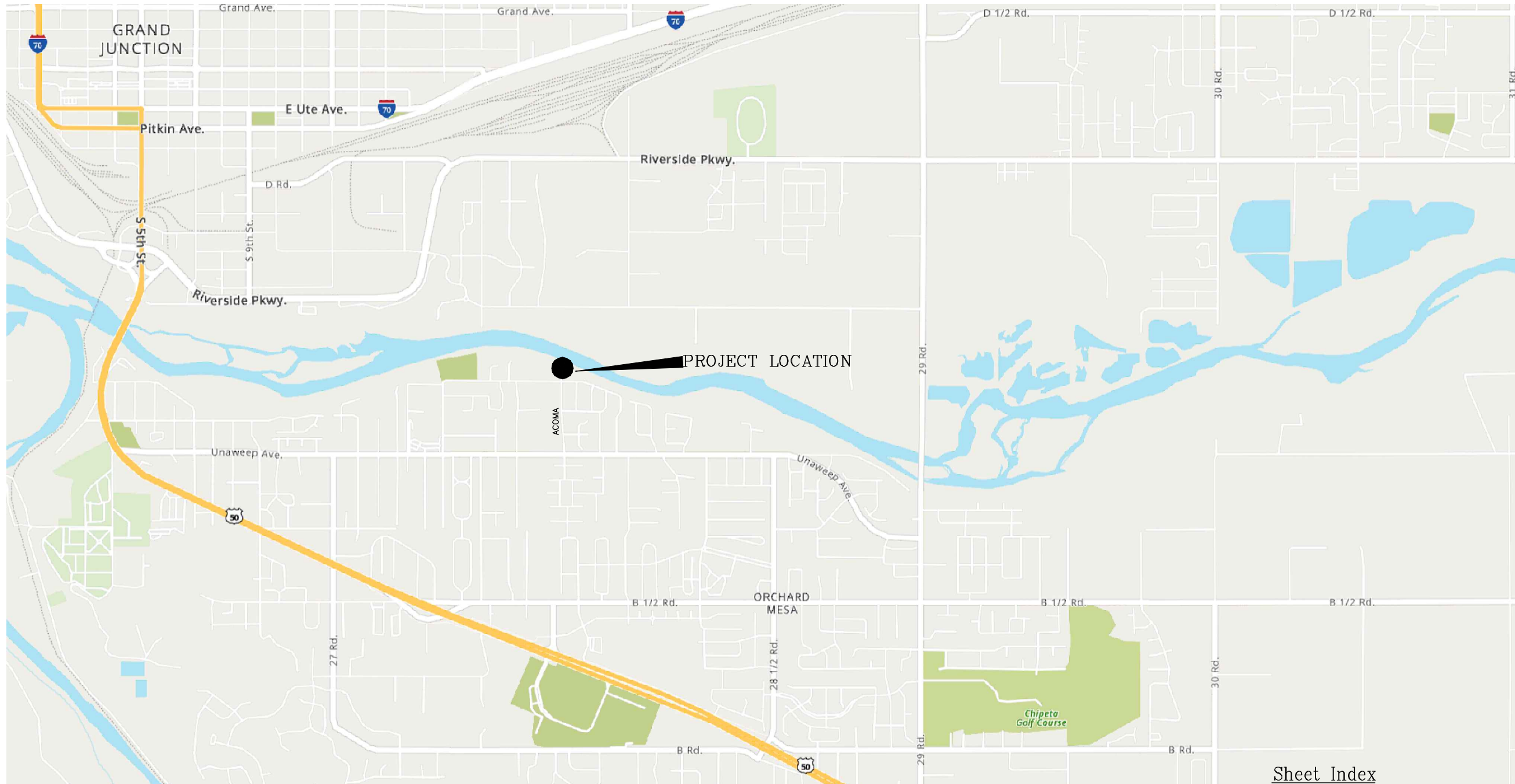


CITY OF GRAND JUNCTION ACOMA CT June 5, 2024

PROJECT NO. F00517



VICINITY MAP



Engineering and Transportation Department

Sheet Index

- 1 Cover Sheet
- 2 Standard Abbreviations, Legend, & Symbols
- 3 Summary of Earthwork Quantities
- 4 Summary of Approximate Quantities
- 5 Removal Plan
- 6 Storm Drain Plan and Profiles
- 7 Improvement Plan
- 8 Staking Plan
- 9 Gutter Profile
- 10-12 Gutter Cross Sections

NOTE: NOTIFY AFFECTED UTILITY VENDOR 48 HOURS PRIOR TO EXCAVATIONS THAT WILL EXPOSE UTILITY LINES. THE COVER SHEET WILL HAVE A LISTING OF UTILITY VENDORS AND TELEPHONE NUMBERS.

	DESCRIPTION	DATE
REVISION Δ REV 1		DATE
REVISION Δ REV 2		DATE
REVISION Δ REV 3		DATE
REVISION Δ REV 4		DATE



**Know what's below.
Call before you dig.**

N:\EngProj\F00517 (Acoma Ct)\60CAD\DESIGN\STANDARD ABBREVIATIONS LEGENDS AND SYMBOLS.dwg, 6/5/2024 12:16:00 PM

ABBREVIATIONS

AAASHTO	AMERICAN ASSOCIATION OF STATE HIGHWAY & TRANSPORTATION OFFICIALS
ABC	AGGREGATE BASE COURSE
AC	ASBESTOS CEMENT
AP	ANGLE POINT
ASB	ANCHORED STRAW BALES
ASP	ALUMINIZED STEEL PIPE
ASTM	AMERICAN SOCIETY FOR TESTING MATERIALS
AWWA	AMERICAN WATER WORKS ASSOCIATION
BC	BACK OF CURB
BF	BUTTERFLY VALVE
BOW	BACK OF WALK
BCR	BEGIN CURB RETURN
BOT	BOTTOM
BSWMP	BETTER STORM WATER MANAGEMENT PRACTICES
CH	CHORD
CAP	CORRUGATED ALUMINUM PIPE
CDOT	COLORADO DEPARTMENT OF TRANSPORTATION
CI	CAST IRON
C, G, & SW	CURB, GUTTER & SIDEWALK
CL	CENTER LINE
CL	CLEAR
CMP	CORRUGATED METAL PIPE
CO	CLEAN OUT
COMB	COMBINATION (AS IN STORM SEWER AND SANITARY SEWER)
CONC	CONCRETE
CONC	CITY SURVEY MONUMENT
CSP	CORRUGATED STEEL PIPE
CU	COPPER
DI	DUCTILE IRON
DWY	DRIVEWAY
E	ELECTRIC
ECR	END CURB RETURN
EG	EDGE OF GUTTER
EL	ELEVATION
EP	EDGE OF PAVEMENT
EX	EXISTING
FB	FULL BODY
FC	FACE OF CURB
FG	FINISHED GRADE
F	FLOW LINE
FL	FLANGE
FM	FORCE MAIN
FO	FIBER OPTICS
FS	FAR SIDE
FTG	FOOTING
G	GAS
GB	GRADE BREAK
GM	GAS METER
GV	GATE VALVE
HBP	HOT BITUMINOUS PAVEMENT
HDPE	HIGH DENSITY POLYETHYLENE
INV	INVERT
IRR	IRRIGATION
L	LENGTH OF ARC
LC	LONG CHORD
LF	LINEAR FEET
LL	LONG ARC
LS	SHORT ARC
LT	LEFT
MB	MAILBOX
MCSM	MESA COUNTY SURVEY MONUMENT
MH	MANHOLE
MJ	MECHANICAL JOINT
MW	MILL WRAP
N/A	NOT APPLICABLE
NIC	NOT IN CONTRACT
NOP	NO ONE PERSON
NRCP	NON-REINFORCED CONCRETE PIPE
NS	NEAR SIDE
NTS	NOT TO SCALE
OHP	OVERHEAD POWER
OHT	OVERHEAD TELEPHONE
PC	POINT OF CURVATURE
PCC	POINT OF COMPOUND CURVATURE
PE	POLYETHYLENE
PERF	PERFORATED
PI	POINT OF INTERSECTION
PIP	PLASTIC IRRIGATION PIPE
POC	POINT ON CURVE
POT	POINT ON TANGENT
PR	PROPOSED
PRC	POINT OF REVERSE CURVATURE
PT	POINT OF TANGENCY
PVC	POLYVINYL CHLORIDE
R	RADIUS
RCP	REINFORCED CONCRETE PIPE
REQ'D	REQUIRED
RG	RESTRAINED GLANDS
RL	LONG RADIUS
ROW	RIGHT OF WAY
RP	RADIUS POINT
RR	RAIL ROAD
RS	SHORT RADIUS
RT	RIGHT
S	SLOPE
SAN	SANITARY
SC	SHORT CHORD
SCD	STANDARD CONTRACT DOCUMENTS
SCH	SCHEDULE
SF	SILT FENCE
SL	SECTION LINE
SSRB	STANDARD SPECIFICATIONS FOR ROAD & BRIDGE CONSTRUCTION
SSUJ	STANDARD SPECIFICATIONS FOR CONSTRUCTION OF UNDERGROUND UTILITIES
STA	STATION
STL	STEEL
STM	STORM
T	TELEPHONE
TAN	LENGTH OF TANGENT
TC	TOP OF CURB
TH	TEST HOLE
TV	TELEVISION
(TYP)	TYPICAL
UU	UNDERGROUND UTILITIES
VC	VERTICAL CURVE
VCP	VITRIFIED CLAY PIPE
VPC	VERTICAL POINT OF CURVATURE
VPCC	VERTICAL POINT OF COMPOUND CURVATURE
VPRC	VERTICAL POINT OF REVERSE CURVATURE
VPI	VERTICAL POINT OF INTERSECTION
VPT	VERTICAL POINT OF TANGENCY
W	WATER
Δ	DELTA ANGLE

LEGEND

BSWMP DRAINAGE BASIN BOUNDARY		PROPOSED CONCRETE CURB AND GUTTER	
BSWMP ANCHORED STRAW BALES		PROPOSED CONCRETE CURB, GUTTER, & SIDEWALK	
BSWMP SILT FENCE		PROPOSED CONCRETE SIDEWALK	
BUILDING		PROPOSED "WET" UTILITIES (CONSTRUCTION NOTE WILL INDICATE TYPE, SIZE, AND MATERIAL OF NEW MAIN)	
CONCRETE CURB AND GUTTER		ALL PROPOSED FEATURES NOT SHOWN IN LEGEND WILL BE SHOWN THE SAME AS THEIR EXISTING COUNTERPART, BUT INDICATED BY BOLDER LINETYPE	
CONCRETE CURB, GUTTER, & SIDEWALK		RAIL ROAD	
CONCRETE DITCH		RETAINING WALL	
CONCRETE SIDEWALK		STRIPING (CONTINUOUS WHITE)	
CULVERT		STRIPING (DASHED WHITE)	
EARTH DITCH		STRIPING (CONTINUOUS YELLOW)	
EDGE OF GRAVEL		STRIPING (DASHED YELLOW)	
EDGE OF PAVEMENT		TOP OF SLOPE	
FENCE (HT & MATL NOTED)		CONTOUR LINES (SHOWN BETWEEN TOP & TOE)	
GUARD RAIL		TOE OF SLOPE	
HATCHING: INDICATES ASPHALT REMOVAL		TRAFFIC DETECTOR LOOP	
HATCHING: INDICATES CONCRETE REMOVAL		UTILITY LINE (ABANDON) (THIS CASE A WATER LINE)	
HATCHING: INDICATES STAGING AREA		UTILITY LINE (CABLE TV)	
LINE (CENTER OF IMPROVEMENTS)		UTILITY LINE (ELECTRIC)	
LINE (CITY LIMITS)		UTILITY LINE (FIBER OPTIC)	
LINE (CONTROL)		UTILITY LINE (GAS)	
LINE (EASEMENT)		UTILITY LINE (HIGH VOLTAGE OVERHEAD POWER)	
LINE (MONUMENT/SECTION)		UTILITY LINE (OVERHEAD POWER)	
LINE (PROPERTY)		UTILITY LINE (OVERHEAD TELEPHONE)	
LINE (RIGHT OF WAY)		UTILITY LINE (SANITARY SEWER)	
MATCH LINE		UTILITY LINE (SANITARY SEWER FORCE MAIN)	
PIPE (IRRIGATION)		UTILITY LINE (SANITARY SEWER SERVICE)	
PIPE (SIPHON)		UTILITY LINE (STORM SEWER)	

SYMBOLS

BENCH MARK	
CATCH BASIN	
CLEAN OUT	
CURB STOP	
FIRE HYDRANT	
GUY WIRE ANCHOR	
HEADGATE	
IRRIGATION PUMP	
MAILBOX	
MANHOLE (ELECTRIC)	
MANHOLE (GAS)	
MANHOLE (SANITARY/STORM)	
MANHOLE (TELEPHONE)	
MANHOLE (TV)	
MANHOLE (WATER)	
METER (GAS)	
METER (WATER)	
PEDESTAL (TELEPHONE)	
PEDESTAL (TV)	
PROPERTY PIN	
PULL BOX	
REDUCER FITTING	
SIGN OR POST (SIGN TYPE NOTED)	
SPRINKLER HEAD	
STREET LIGHT	
SURVEY MONUMENT (CITY)	
SURVEY MONUMENT (TYPE NOTED)	
TEST HOLE	
TRAFFIC PAINT MARKING	
TRAFFIC SIGNAL POLE AND MAST ARM	
UTILITY POLE	
VALVE (GAS)	
VALVE (IRRIGATION)	
VALVE (WATER)	
VEGETATION (HEDGE OR BUSH)	
VEGETATION (TREE STUMP)	
VEGETATION (TREE) (CALIPER SIZE NOTED)	
WATER HYDRANT	
WEIR	
YARD LIGHT	

BAR SCALE:

GRAPHIC SCALE

(IN FEET)
1 inch = 20 ft.

NORTH ARROW:

REVISION Δ	DESCRIPTION	DATE	DRAWN BY JCS	DATE 2024
REVISION Δ			DESIGNED BY JCS	DATE 2024
REVISION Δ			CHECKED BY ER	DATE 2024
REVISION Δ			APPROVED BY KH	DATE 2024

SEE PLAN FOR SCALE INFO



ENGINEERING AND TRANSPORTATION DEPARTMENT
PROJECT NO. F00517

ACOMA CT
STANDARD ABBREVIATIONS LEGENDS AND SYMBOLS
June 5, 2024

N:\EngProj\F00517 (Acoma Ct)\60CAD\DESIGN\STANDARD ABBREVIATIONS LEGENDS AND SYMBOLS.dwg - PLOTTED 6/5/2024 12:16:01 PM

N:\EngProj\F00517 (Acoma Ct)\60CAD\DESIGN\SUMMARY OF EARTHWORK QUANTITIES.dwg, 6/5/2024 12:16:01 PM

SUMMARY OF EARTHWORK QUANTITIES

INDEX				PROJECT TOTAL	
Book	Page	Sheet		CU. YD.	As Const.
			203-00010 UNCLASSIFIED EXCAVATION (CIP)		
			ON SITE (QUANTITY CALCULATED FROM CIVIL3D - TIN SUBTRACTION)		
			UNCLASSIFIED EXCAVATION	2	
			ADDITION OF PAVEMENT AND CONCRETE PAY ITEMS PRISM	24	
			DEDUCT ASPHALT AND CONCRETE REMOVAL ITEMS	7	
			TOTAL FOR PAY QUANTITIES	19	
			EMBANKMENT MATERIAL (CIP) (FOR INFORMATION ONLY)		
			QUANTITY CALCULATED FROM CIVIL3D - TIN SUBTRACTION		
			UNCLASSIFIED EMBANKMENT	0	
			TOTAL	0	

INDEX			EARTHWORK QUANTITIES BALANCE (FOR INFORMATION ONLY)	PROJECT TOTAL	
Book	Page	Sheet		CU. YD.	As Const.
			Total Unclassified Excavation	19	
			Total Embankment (net)	0	
			EMBANKMENT TIMES FACTOR 1.15 (compaction)	0	
			Excess Material leftover (Material to be hauled away from site by Contractor)	19	

REVISION Δ	DESCRIPTION	DATE	DRAWN BY <u>JCS</u>	DATE <u>2024</u>
REVISION Δ			DESIGNED BY <u>JCS</u>	DATE <u>2024</u>
REVISION Δ			CHECKED BY <u>ER</u>	DATE <u>2024</u>
REVISION Δ			APPROVED BY <u>KH</u>	DATE <u>2024</u>

NO SCALE



ENGINEERING AND
TRANSPORTATION DEPARTMENT
PROJECT NO. F00517

ACOMA CT
SUMMARY OF EARTHWORK QUANTITIES
June 5, 2024

N:\EngProj\F00517 (Acoma Ct)\60CAD\DESIGN\SUMMARY OF EARTHWORK QUANTITIES.dwg - PLOTTED 6/5/2024 12:16:02 PM

N:\EngProj\F00517 (Acoma Ct)\60CAD\DESIGN\SUMMARY OF APPROXIMATE QUANTITIES.dwg, 6/5/2024 12:16:02 PM

Item No.	CDOT, City Ref.	Description	Quantity	Units
1	108.2	Storm Drain Pipe - 8" HDPE	10.	LF
2	108.6	Storm Drain Inlet with vertical curb opening (24" x 36")	1.	EA
3	108.6	Storm Drain 8" 45 degree Elbow	1.	EA
4	202	Remove Asphalt Mat. Full Depth.	50.	SY
5	202	Remove Concrete	25.	SY
6	202	Remove Storm Drain Inlet	1.	EA
7	210	Reset Mail Box	1.	EA
8	203	Unclassified Excavation	19.	CY
9	203	Haul Earthwork Material	19.	CY
10	208	Storm Drain Inlet Protection (Type III)	1.	EA
11	208	Prefabricated Vehicle Tracking Pad	1.	EA
12	208	Prefabricated Concrete Washout Structure	1.	EA
13	304	Aggregate Base Course (Class 6) (8" Thick)	45.	SY
14	401	Hot Mix Asphalt (4" thick) (Grading SX 75, Binder Grade 64-22)	10.	TON
15	608	Concrete Curb and Gutter (2' Wide) to include 6" Class 6 Aggregate Base Course	26.	LF
16	608	Concrete Drive Over Curb and Gutter 3' wide include 6" Class 6 Aggregate Base Course	26.	LF
17	608	Concrete Driveway (6" Thick) to include 6" of Class 6 Aggregate Base Course.	12.	SY
18	620	Sanitary Facility	1.	EA
19	625	Construction Surveying (2% plus/minus Project Cost)	1.	SUM
20	626	Mobilization (7% plus/minus Project Cost)	1.	SUM
21	MCR	Minor Contract Revisions	1.	MCR

REVISION Δ	DESCRIPTION	DATE	DRAWN BY	JCS	DATE	2024
REVISION Δ			DESIGNED BY	JCS	DATE	2024
REVISION Δ			CHECKED BY	ER	DATE	2024
REVISION Δ			APPROVED BY	KH	DATE	2024

NO SCALE



ENGINEERING AND
TRANSPORTATION DEPARTMENT
PROJECT NO. F00517

ACOMA CT
SUMMARY OF APPROXIMATE QUANTITIES
June 5, 2024

N:\EngProj\F00517 (Acoma Ct)\60CAD\DESIGN\SUMMARY OF APPROXIMATE QUANTITIES.dwg - PLOTTED 6/5/2024 12:16:03 PM

333 ACOMA CT

331 ACOMA CT

334 ACOMA CT

PROTECT EXISTING WATER METER IN PLACE DURING CONSTRUCTION OF CURB AND GUTTER AND STORM DRAIN.

LANDSCAPE BOULDERS, MULCH, AND EXISTING IRRIGATION IF ENCOUNTERED MAY NEED TO BE ADJUSTED AND OR RESET TO CONSTRUCT NEW STORM DRAIN. ALL NECESSARY WORK SHALL BE INCLUDED IN THE COST OF THE STORM DRAIN. NO SEPARATE PAY.

PROTECT BUSH IN PLACE. MINOR ADJUSTMENT OF EXISTING IRRIGATION AND EXTENSION OF LANDSCAPING TO NEW BACK OF CURB MAY BE NEEDED. THIS WORK SHALL NOT BE PAID FOR SEPARATELY AND SHALL BE INCLUDED IN THE COST OF THE NEW CURB AND GUTTER. NO SEPARATE PAY.

REMOVE EXISTING PIPE JUST AS NEEDED TO CONNECT NEW STORM DRAIN PIPE TO EXISTING. EXISTING PIPE JUST NORTH OF EXISTING INLET MAY BE LEFT IN PLACE SO AS TO NOT DISTURB MAILBOX. ANY NECESSARY PIPE REMOVAL SHALL BE INCLUDED IN THE COST OF THE STORM DRAIN. NO SEPARATE PAY.

REMOVE CONCRETE AS INDICATED BY CROSS HATCHING. SEE STAKING PLAN FOR EXACT LIMIT OF CONCRETE REMOVAL.

PROTECT EXISTING MAILBOX IN PLACE.

RESET MAILBOX. RESET MAILBOX AFTER COMPLETION OF CONSTRUCTION.

N:\EngProj\F00517 (Acoma Ct)\60CAD\DESIGN\REMOVAL PLAN.dwg, 6/5/2024 12:16:03 PM

CONC DWY

2' C&G

~BUSH~

WM

MB

BRICK WALK

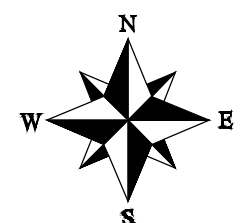
GRATE 4635.26
INVout 4633.20

REMOVE ASPHALT AS INDICATED BY DOT HATCHING. SEE STAKING PLAN FOR EXACT LIMIT OF ASPHALT REMOVAL.

REMOVE EXISTING STORM DRAIN INLET.

ACOMA CT

~ASPHALT~



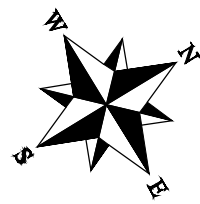
REVISION	DESCRIPTION	DATE	DRAWN BY	DATE	SCALE
REVISION			JCS	2024	
REVISION			JCS	2024	
REVISION			ER	2024	
REVISION			KH	2024	



ENGINEERING AND TRANSPORTATION DEPARTMENT
PROJECT NO. F00517

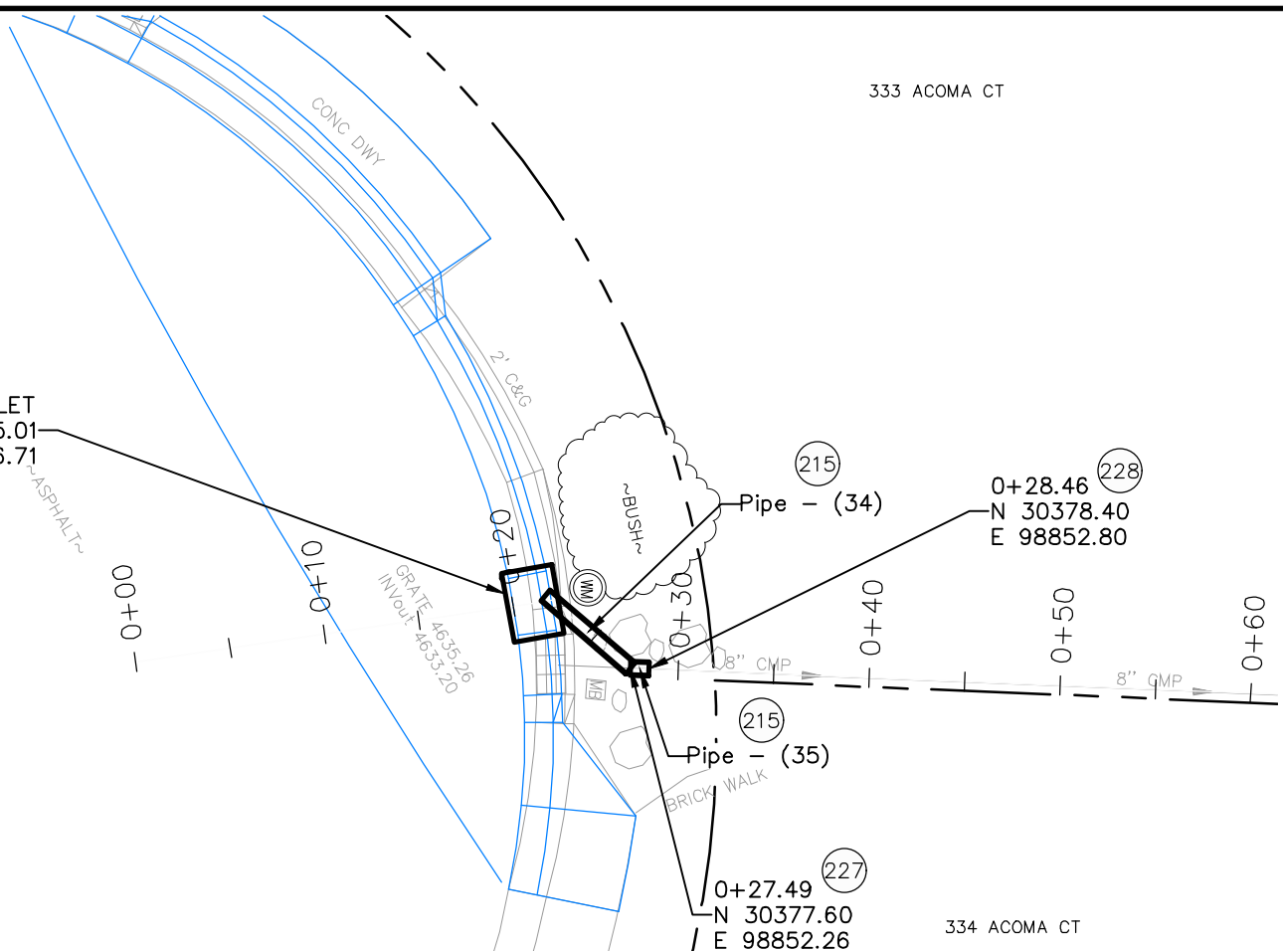
ACOMA CT
REMOVAL PLAN
June 5, 2024

N:\EngProj\F00517 (Acoma Ct)\60CAD\DESIGN\REMOVAL PLAN.dwg - PLOTTED 6/5/2024 12:16:04 PM



ACOMA CT

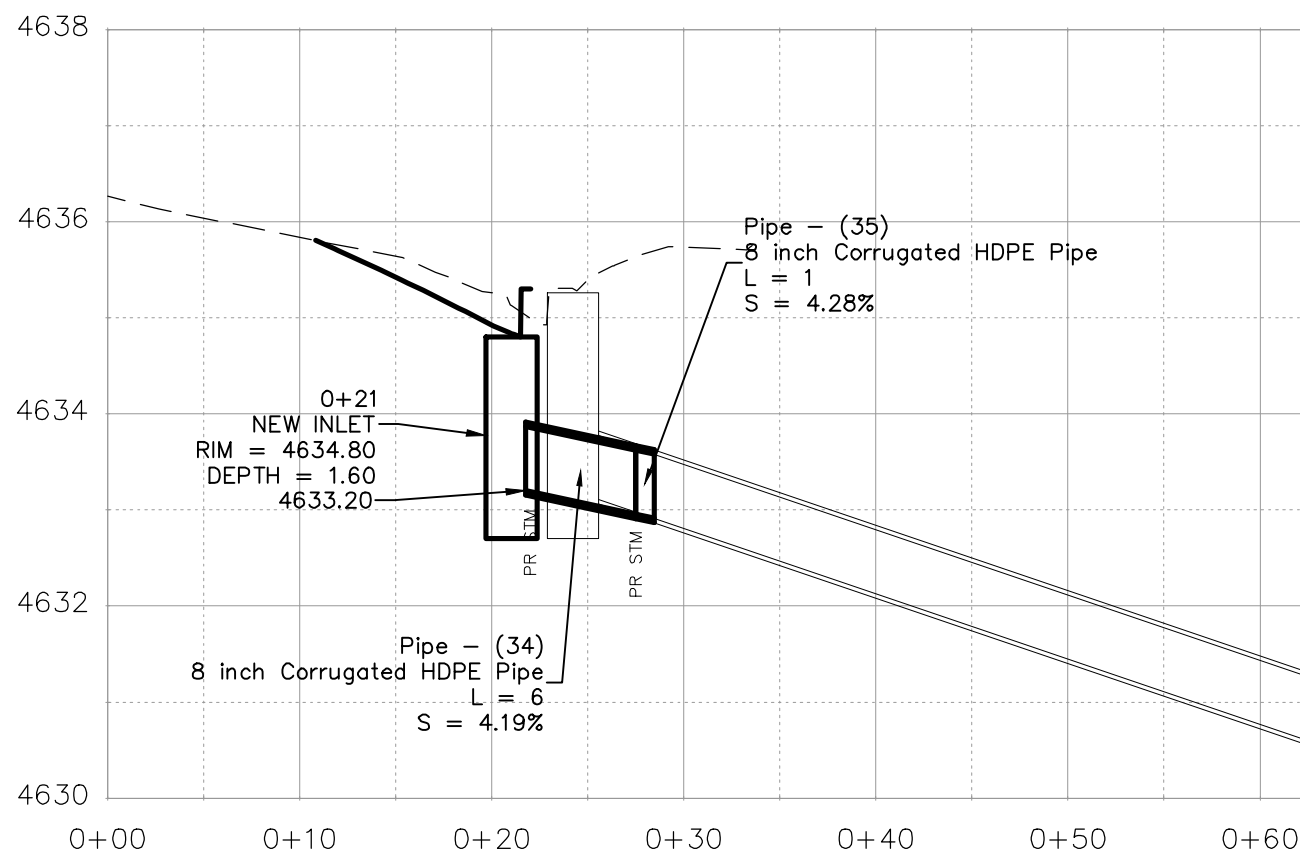
204
NEW INLET
N 30375.01
E 98846.71



CONSTRUCTION NOTES

- 204 102.13/108.6 – SINGLE STORM DRAIN INLET (VERTICAL CURB) (SEE CITY OF GRAND JUNCTION STANDARD DETAIL D-07).
- 215 102.10/108.2 – 8" STORM DRAIN PIPE (ADS SINGLE WALL HEAVY DUTY CORRUGATED HDPE PIPE OR ENGINEER APPROVED EQUAL). INCLUDES TYPE A BEDDING AND HAUNCHING MATERIAL AND BACKFILL OF TRENCH WITH NATIVE MATERIALS MEETING 103.16 EARTH BACKFILL MATERIAL.
- 227 108.2 – 8" 45 DEGREE ELBOW
- 228 CONNECT TO EXISTING PIPE. CONTRACTOR TO APPROVE MEANS OF CONNECTION WITH PROJECT ENGINEER PRIOR TO CONSTRUCTION. COST OF CONNECTION INCIDENTAL TO STORM DRAIN CONSTRUCTION. NO SEPARATE PAY.

NOTE:
SEE REMOVAL PLAN FOR REMOVALS OF OBSTRUCTION AND IMPROVEMENT
PLAN FOR GROUND RESTORATIONS AND NEW CURB, GUTTER, AND DRIVE.



N:\EngProj\F00517 (Acoma Ct)\60CAD\DESIGN\STORM DRAIN PLAN.dwg, 6/5/2024 12:16:04 PM

REVISION	DESCRIPTION	DATE	DRAWN BY	DATE
REVISION			JCS	2024
REVISION			JCS	2024
REVISION			ER	2024
REVISION			KH	2024

SCALES:	
PLAN & PROFILE	
HORIZONTAL	1" = 10'
VERTICAL	1" = 2'

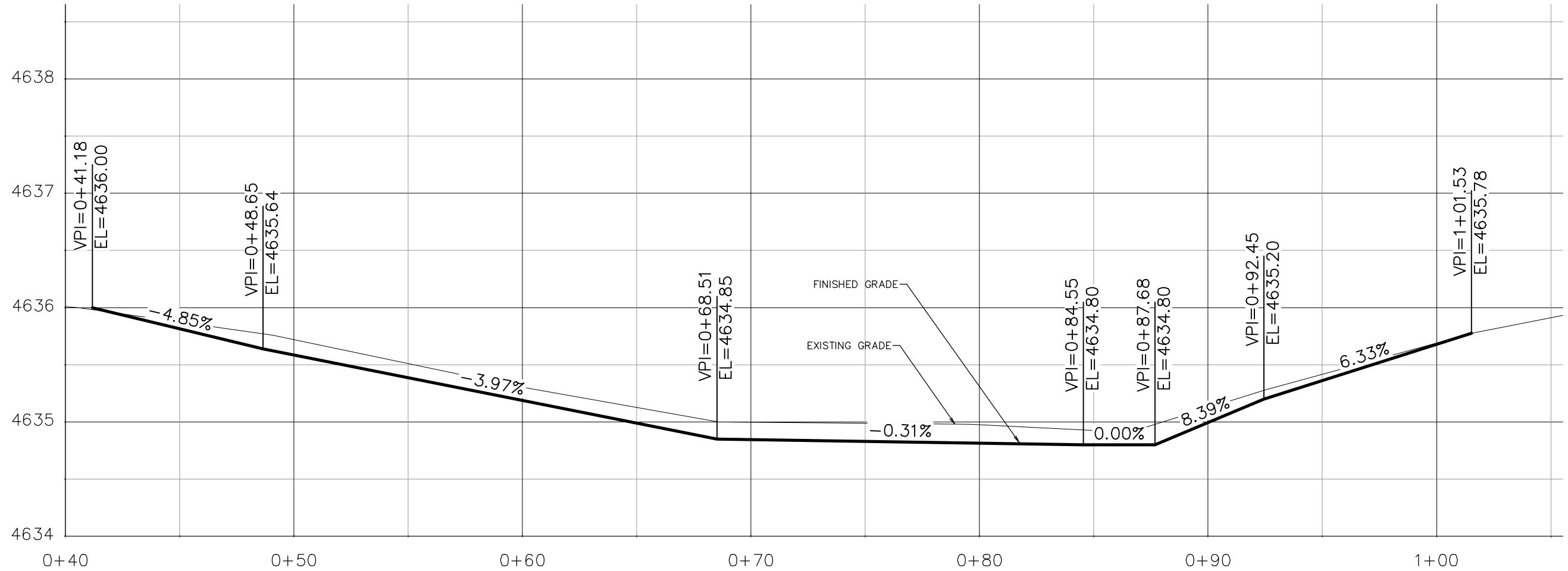


**ENGINEERING AND
TRANSPORTATION DEPARTMENT**
PROJECT NO. F00517

**ACOMA CT
STORM DRAIN PLAN**
June 5, 2024

N:\EngProj\F00517 (Acoma Ct)\60CAD\DESIGN\STORM DRAIN PLAN.dwg - PLOTTED 6/5/2024 12:16:05 PM

N:\EngProj\F00517 (Acoma Ct)\60CAD\0DESIGN\GUTTER PROFILE.dwg, 6/5/2024 12:16:07 PM



FLOWLINE OF GUTTER PROFILE GRADE LINE FOR ACOMA CT

SEE STAKING PLAN FOR STAKING DATA

REVISION	DESCRIPTION	DATE
REVISION		
REVISION		
REVISION		

DRAWN BY	JCS	DATE	2024
DESIGNED BY	JCS	DATE	2024
CHECKED BY	ER	DATE	2024
APPROVED BY	KH	DATE	2024

SCALES:	
PLAN & PROFILE	1" = 40'
HORIZONTAL	1" = 40'
VERTICAL	1" = 5'

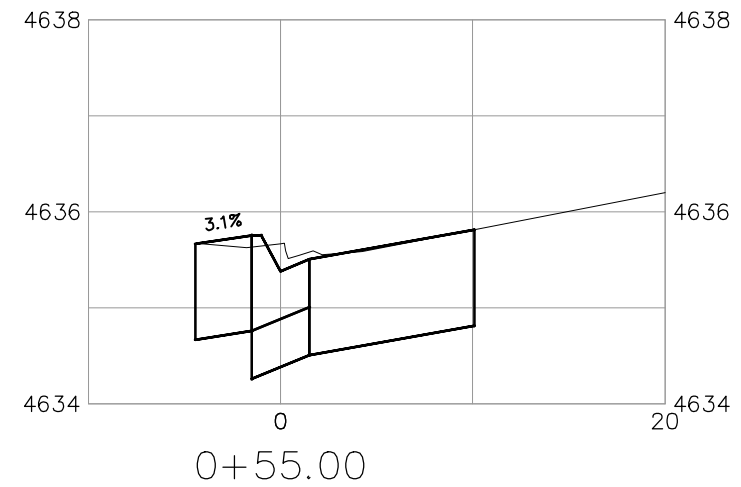
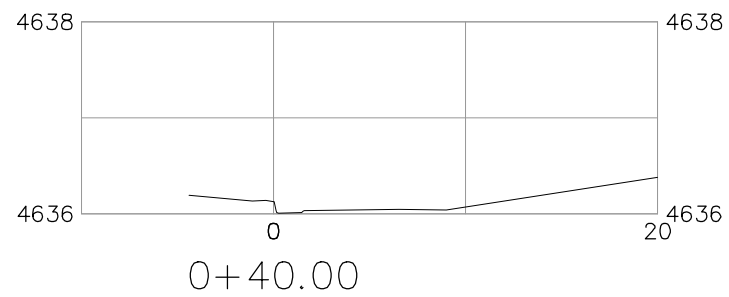
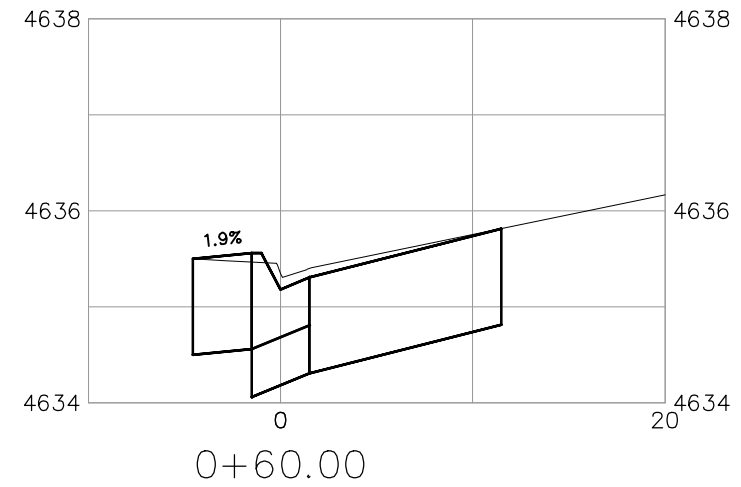
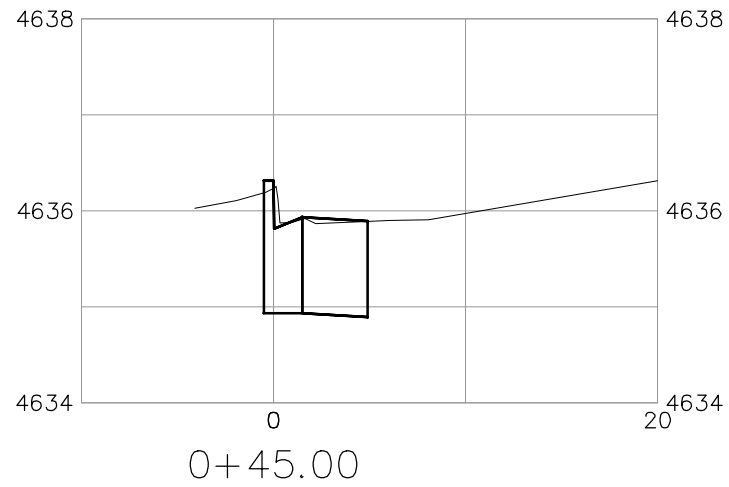
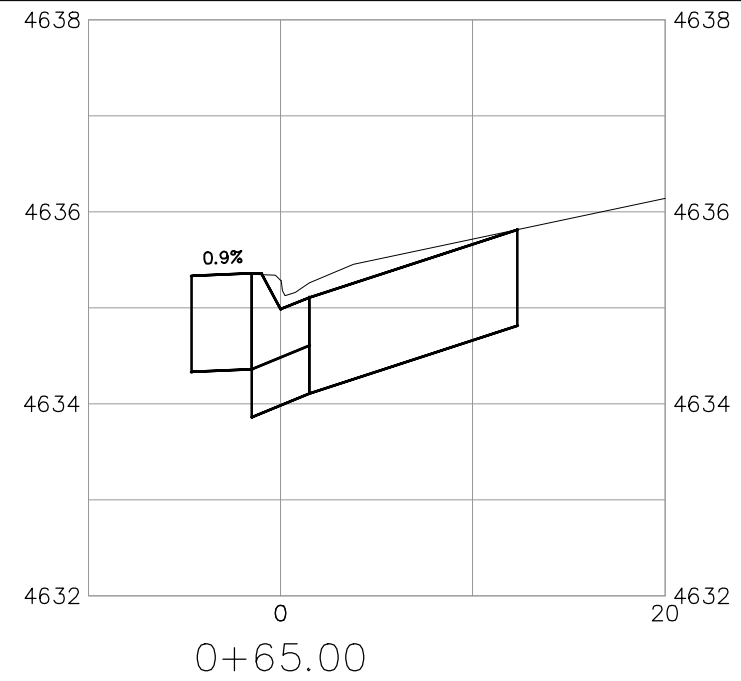
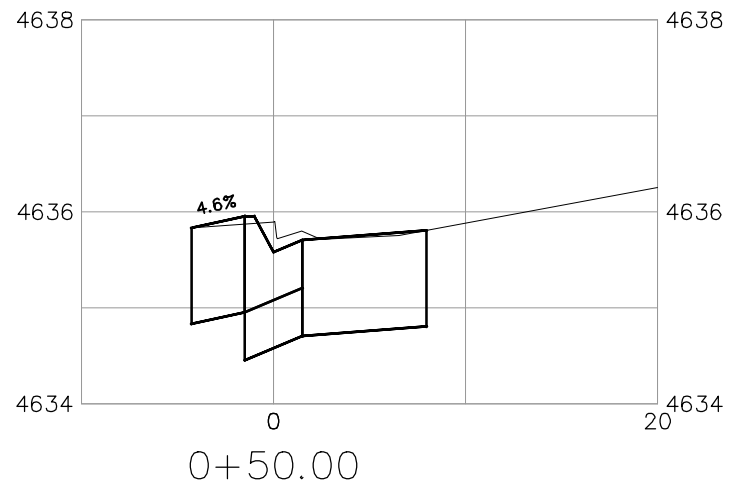


ENGINEERING AND
TRANSPORTATION DEPARTMENT
PROJECT NO. F00517

ACOMA CT
GUTTER PROFILE
June 5, 2024

N:\EngProj\F00517 (Acoma Ct)\60CAD\0DESIGN\GUTTER PROFILE.dwg - PLOTTED 6/5/2024 12:16:08 PM

N:\EngProj\F00517 (Acoma Ct)\60CAD\0DESIGN\GUTTER CROSS SECTIONS.dwg, 6/5/2024 12:16:09 PM



SEE STAKING PLAN FOR STAKING DATA

REVISION	DESCRIPTION	DATE
REVISION		
REVISION		
REVISION		

DRAWN BY	JCS	DATE	2024
DESIGNED BY	JCS	DATE	2024
CHECKED BY	ER	DATE	2024
APPROVED BY	KH	DATE	2024

SCALES:	
PLAN & PROFILE	1" = 10'
HORIZONTAL	1" = 10'
VERTICAL	1" = 2'

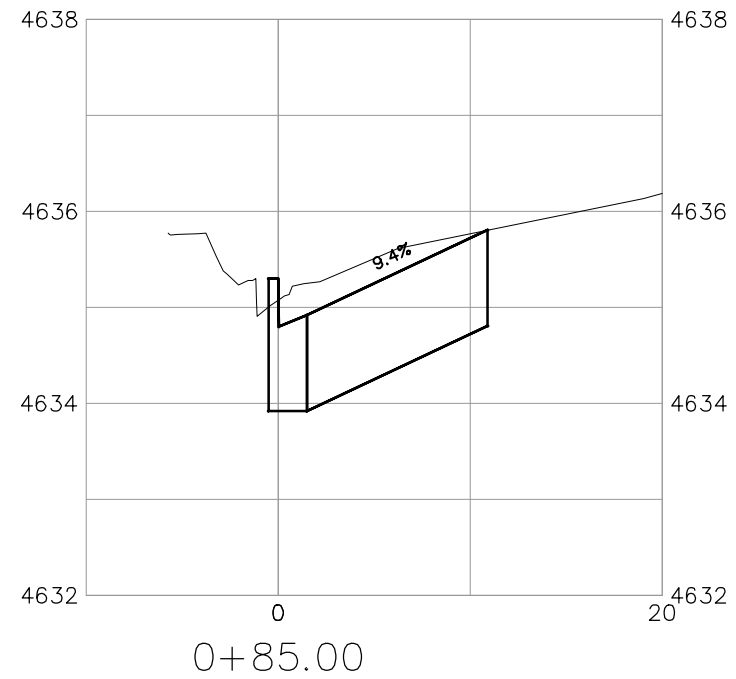
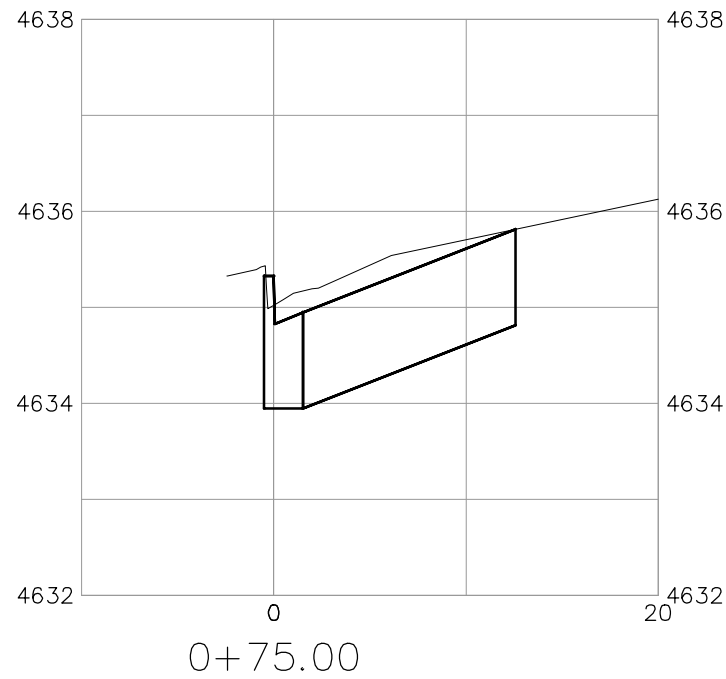
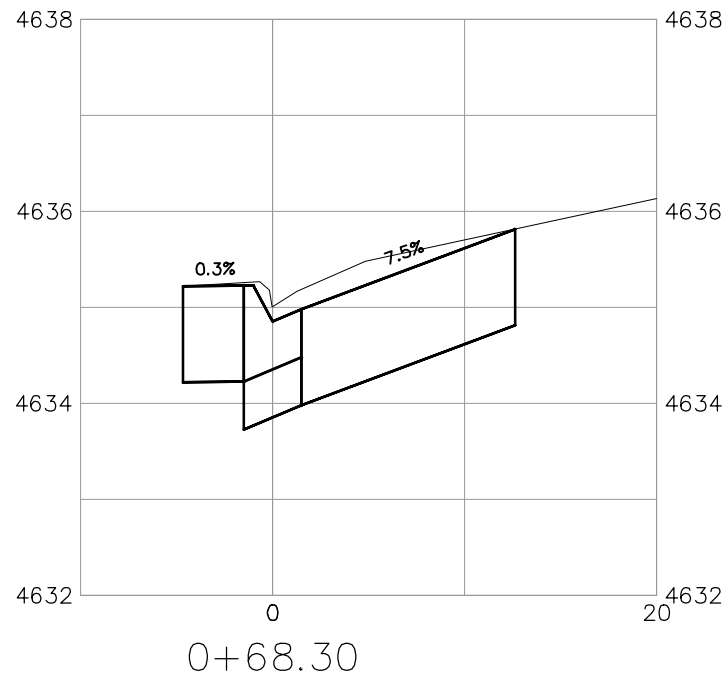
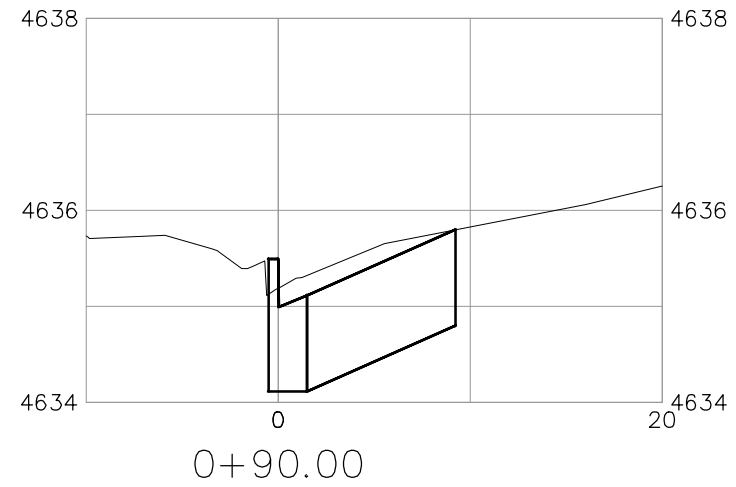
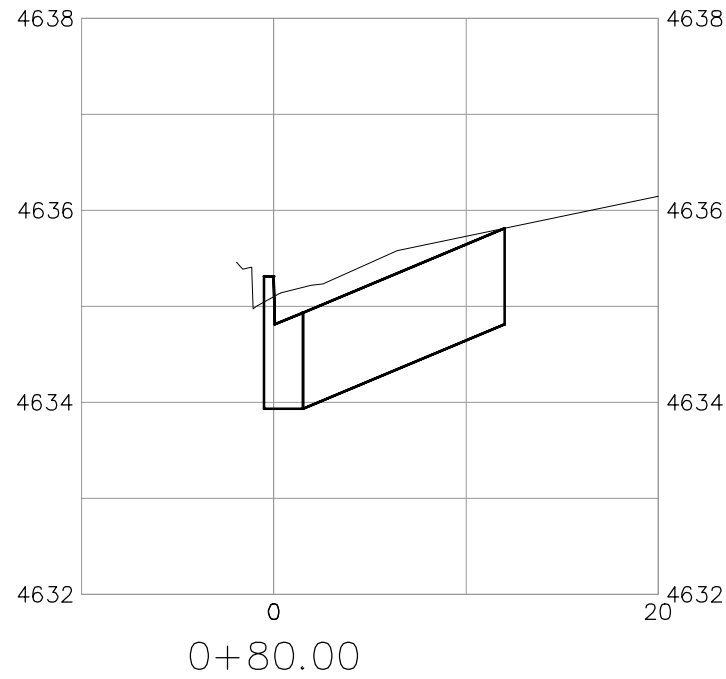
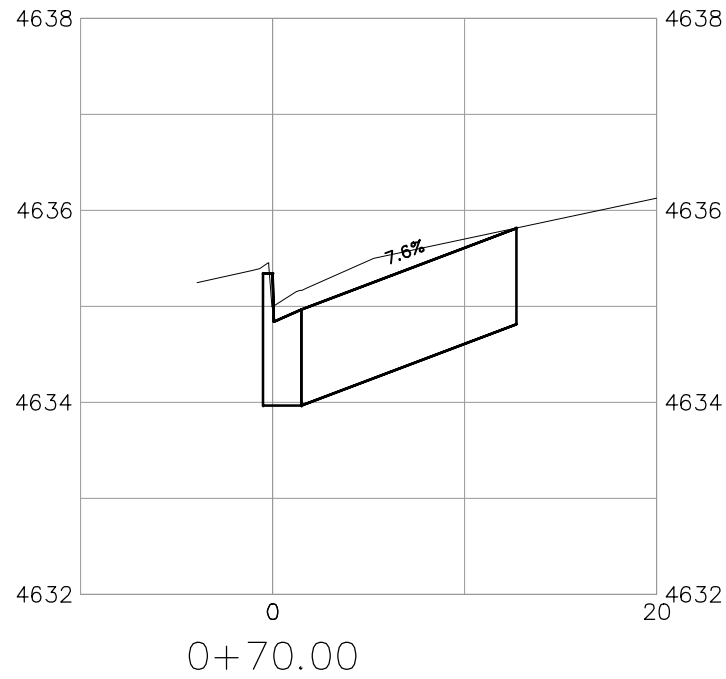


ENGINEERING AND TRANSPORTATION DEPARTMENT
PROJECT NO. F00517

ACOMA CT
GUTTER CROSS SECTIONS - 1
June 5, 2024

N:\EngProj\F00517 (Acoma Ct)\60CAD\0DESIGN\GUTTER CROSS SECTIONS.dwg - PLOTTED 6/5/2024 12:16:09 PM

N:\EngProj\F00517 (Acoma Ct)\60CAD\DESIGN\GUTTER CROSS SECTIONS.dwg, 6/5/2024 12:16:10 PM



SEE STAKING PLAN FOR STAKING DATA

REVISION	DESCRIPTION	DATE
REVISION		
REVISION		
REVISION		

DRAWN BY	JCS	DATE	2024
DESIGNED BY	JCS	DATE	2024
CHECKED BY	ER	DATE	2024
APPROVED BY	KH	DATE	2024

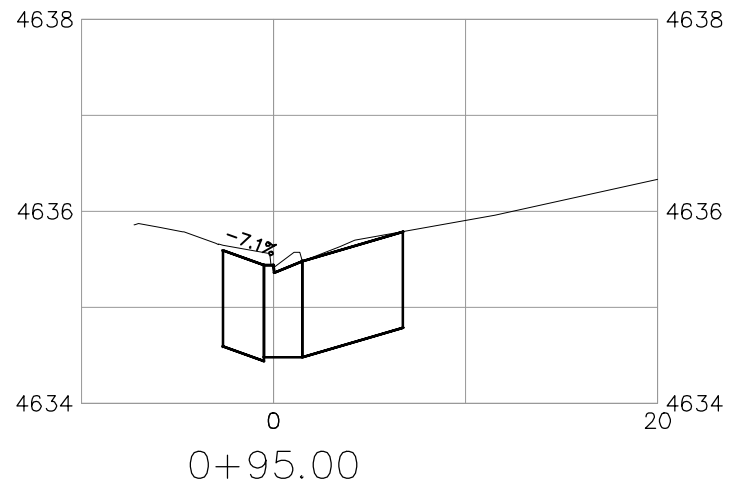
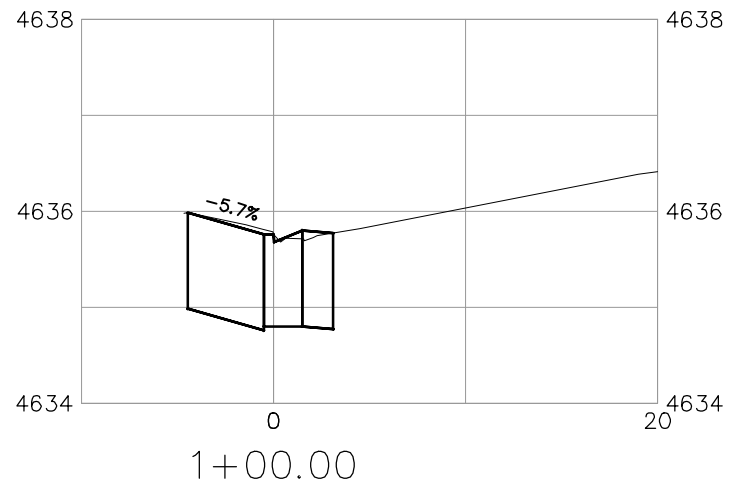
SCALES:	
PLAN & PROFILE	1" = 10'
HORIZONTAL	1" = 10'
VERTICAL	1" = 2'



**ENGINEERING AND
TRANSPORTATION DEPARTMENT**
PROJECT NO. F00517

ACOMA CT
GUTTER CROSS SECTIONS - 2
June 5, 2024

N:\EngProj\F00517 (Acoma Ct)\60CAD\DESIGN\GUTTER CROSS SECTIONS.dwg - PLOTTED 6/5/2024 12:16:10 PM



SEE STAKING PLAN FOR STAKING DATA

REVISION	DESCRIPTION	DATE
REVISION		
REVISION		
REVISION		

DRAWN BY	JCS	DATE	2024
DESIGNED BY	JCS	DATE	2024
CHECKED BY	ER	DATE	2024
APPROVED BY	KH	DATE	2024

SCALES:	
PLAN & PROFILE	1" = 10'
HORIZONTAL	1" = 10'
VERTICAL	1" = 2'



**ENGINEERING AND
TRANSPORTATION DEPARTMENT**
PROJECT NO. F00517

ACOMA CT
GUTTER CROSS SECTIONS - 3
June 5, 2024