



Purchasing Division

## ADDENDUM NO. 2

**DATE:** June 28, 2024  
**FROM:** City of Grand Junction Purchasing Division  
**TO:** All Offerors  
**RE:** 2024 Sewer Replacement – Bahamas Way and 22<sup>nd</sup> & Gunnison Ave IFB-5458-24-DD

Offerors responding to the above referenced solicitation are hereby instructed that the requirements have been clarified, modified, superseded, and supplemented as to this date as hereinafter described.

Please make note of the following clarifications:

1. **Question:** per addendum #1 you added line items #38-40, sewer spot repair...are you giving any more info on pipe size and type of repair? Can't really bid on something with no info.

**Answer:**

Line Item #38

- Ø8" diameter pipe main
- 2 - Max adapter couplings required
- Estimate PVC pipe length of 5' long

• Line Item #39

- Ø8" diameter pipe main
- 2 - Max adapter couplings required
- Estimate PVC pipe length of 30' long

• Line Item #40

- Ø8" diameter pipe main
- 2 - Max adapter couplings required
- Estimate PVC pipe length of 5' long

2. **Question:** I don't see any drop manhole, bid item #11?

**Answer:** Located at STA 25+36.65 See attached Drawing Updated.

The original solicitation for the project noted above is amended as noted. All other conditions of the subject remain the same.

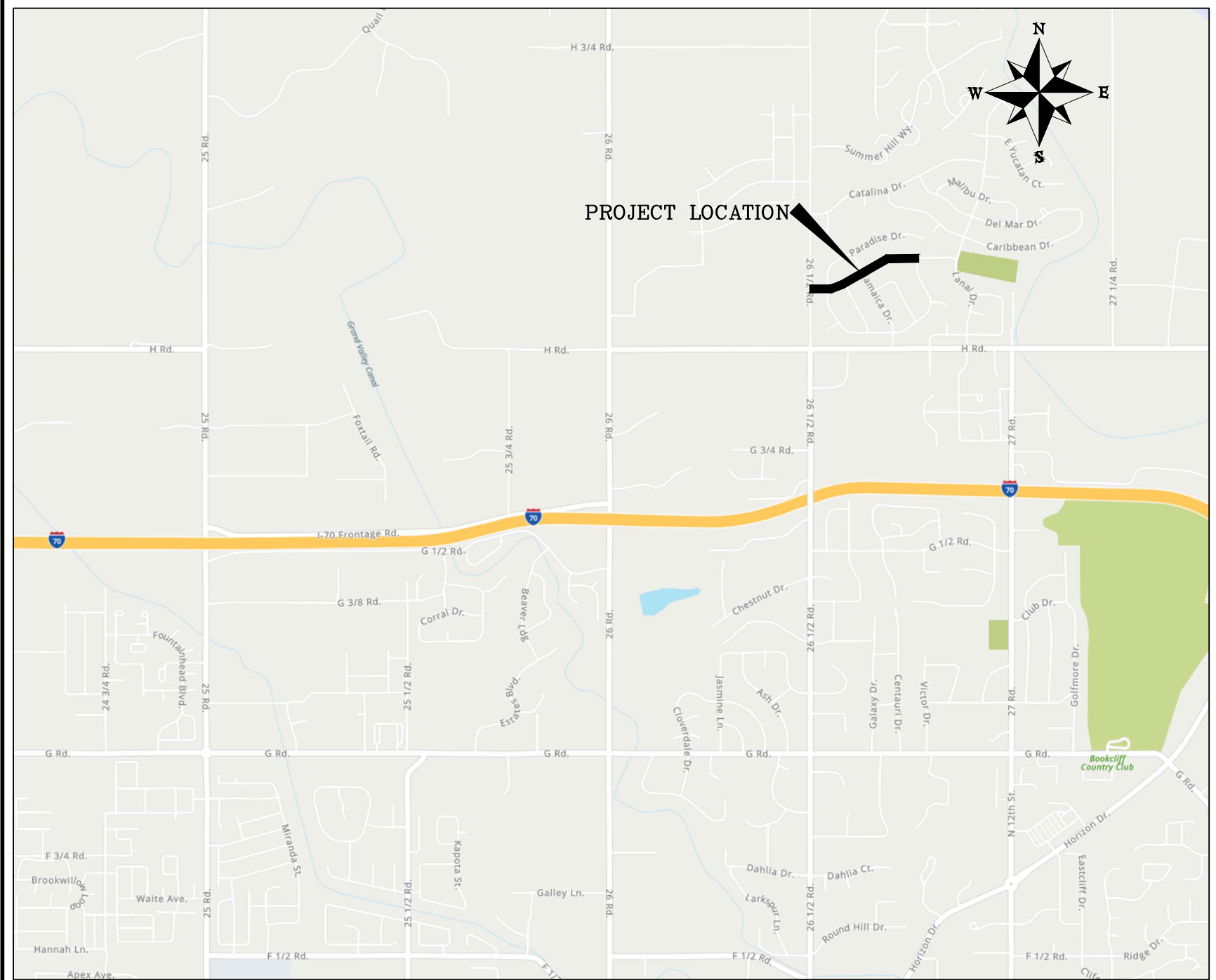
Respectfully,

A handwritten signature in blue ink that reads "Dolly Daniels".

Dolly Daniels, Senior Buyer  
City of Grand Junction, Colorado

# CITY OF GRAND JUNCTION SEWER LINE REPLACEMENT – PARADISE HILLS

## January 2, 2024



PROJECT LOCATION

### Sheet Index

- 1 Cover Sheet
- 2 Standard Abbreviations, Legend, & Symbols
- 3 Project Control
- 4-10 Utility Plan and Profile

VICINITY MAP



*Public Works  
Engineering Division*

NOTE: NOTIFY AFFECTED UTILITY VENDOR 48 HOURS PRIOR TO EXCAVATIONS THAT WILL EXPOSE UTILITY LINES. THE COVER SHEET WILL HAVE A LISTING OF UTILITY VENDORS AND TELEPHONE NUMBERS.

REVISION	DESCRIPTION	DATE
REVISION $\Delta$ REV 1	Drop MH @ STA 25+36.65	06.28.24
REVISION $\Delta$ REV 2		
REVISION $\Delta$ REV 3		
REVISION $\Delta$ REV 4		



Know what's below.  
Call before you dig.

**ABBREVIATIONS**

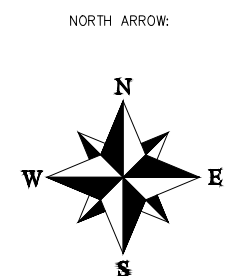
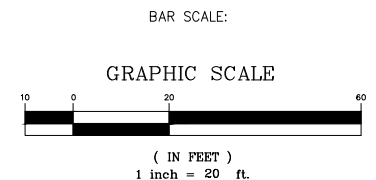
AASHTO	AMERICAN ASSOCIATION OF STATE HIGHWAY & TRANSPORTATION OFFICIALS
ABC	AGGREGATE BASE COURSE
AC	ASBESTOS CEMENT
AP	ANGLE POINT
ASB	ANCHORED STRAW BALES
ASP	ALUMINIZED STEEL PIPE
ASTM	AMERICAN SOCIETY FOR TESTING MATERIALS
AWWA	AMERICAN WATER WORKS ASSOCIATION
BC	BACK OF CURB
BF	BUTTERFLY VALVE
BOW	BACK OF WALK
BCR	BEGIN CURB RETURN
BOT	BOTTOM
BSWMP	BETTER STORM WATER MANAGEMENT PRACTICES
CH	CHORD
CAP	CORRUGATED ALUMINUM PIPE
CDOT	COLORADO DEPARTMENT OF TRANSPORTATION
CI	CAST IRON
C, G, & SW	CURB, GUTTER & SIDEWALK
C	CENTER LINE
CL	CLEAR
CMP	CORRUGATED METAL PIPE
CO	CLEAN OUT
COMB	COMBINATION (AS IN STORM SEWER AND SANITARY SEWER)
CONC	CONCRETE
CSM	CITY SURVEY MONUMENT
CSP	CORRUGATED STEEL PIPE
CU	COPPER
DI	DUCTILE IRON
DWY	DRIVEWAY
E	ELECTRIC
ECR	END CURB RETURN
EG	EDGE OF GUTTER
EL	ELEVATION
EP	EDGE OF PAVEMENT
EX	EXISTING
FB	FULL BODY
FC	FACE OF CURB
FG	FINISHED GRADE
F	FLOW LINE
FL	FLANGE
FM	FORCE MAIN
FO	FIBER OPTICS
FS	FAR SIDE
FTG	FOOTING
G	GAS
GB	GRADE BREAK
GM	GAS METER
GV	GATE VALVE
HBP	HOT BITUMINOUS PAVEMENT
HDPE	HIGH DENSITY POLYETHYLENE
INV	INVERT
IRR	IRRIGATION
L	LENGTH OF ARC
LC	LONG CHORD
LF	LINEAR FEET
LL	LONG ARC
LS	SHORT ARC
LT	LEFT
MB	MAILBOX
MCSM	MESA COUNTY SURVEY MONUMENT
MH	MANHOLE
MJ	MECHANICAL JOINT
MW	MILL WRAP
N/A	NOT APPLICABLE
NIC	NOT IN CONTRACT
NOP	NO ONE PERSON
NRCP	NON-REINFORCED CONCRETE PIPE
NS	NEAR SIDE
NTS	NOT TO SCALE
OHP	OVERHEAD POWER
OHT	OVERHEAD TELEPHONE
PC	POINT OF CURVATURE
PCC	POINT OF COMPOUND CURVATURE
PE	POLYETHYLENE
PERF	PERFORATED
PI	POINT OF INTERSECTION
PIP	PLASTIC IRRIGATION PIPE
POC	POINT ON CURVE
POT	POINT ON TANGENT
PR	PROPOSED
PRC	POINT OF REVERSE CURVATURE
PT	POINT OF TANGENCY
PVC	POLYVINYL CHLORIDE
R	RADIUS
RCP	REINFORCED CONCRETE PIPE
REQ'D	REQUIRED
RG	RESTRAINED GLANDS
RL	LONG RADIUS
ROW	RIGHT OF WAY
RP	RADIUS POINT
RR	RAIL ROAD
RS	SHORT RADIUS
RT	RIGHT
S	SLOPE
SAN	SANITARY
SC	SHORT CHORD
SCD	STANDARD CONTRACT DOCUMENTS
SCH	SCHEDULE
SF	SILT FENCE
SL	SECTION LINE
SSRB	STANDARD SPECIFICATIONS FOR ROAD & BRIDGE CONSTRUCTION
SSUJ	STANDARD SPECIFICATIONS FOR CONSTRUCTION OF UNDERGROUND UTILITIES
STA	STATION
STL	STEEL
STM	STORM
T	TELEPHONE
TAN	LENGTH OF TANGENT
TC	TOP OF CURB
TH	TEST HOLE
TV	TELEVISION
(TYP)	TYPICAL
UU	UNDERGROUND UTILITIES
VC	VERTICAL CURVE
VCP	VITRIFIED CLAY PIPE
VPC	VERTICAL POINT OF CURVATURE
VPCC	VERTICAL POINT OF COMPOUND CURVATURE
VPRC	VERTICAL POINT OF REVERSE CURVATURE
VPI	VERTICAL POINT OF INTERSECTION
VPT	VERTICAL POINT OF TANGENCY
W	WATER
Δ	DELTA ANGLE

**LEGEND**

BSWMP DRAINAGE BASIN BOUNDARY		PROPOSED CONCRETE CURB AND GUTTER	
BSWMP ANCHORED STRAW BALES		PROPOSED CONCRETE CURB, GUTTER, & SIDEWALK	
BSWMP SILT FENCE		PROPOSED CONCRETE SIDEWALK	
BUILDING		PROPOSED "WET" UTILITIES (CONSTRUCTION NOTE WILL INDICATE TYPE, SIZE, AND MATERIAL OF NEW MAIN)	
CONCRETE CURB AND GUTTER		ALL PROPOSED FEATURES NOT SHOWN IN LEGEND WILL BE SHOWN THE SAME AS THEIR EXISTING COUNTERPART, BUT INDICATED BY BOLDER LINETYPE	
CONCRETE CURB, GUTTER, & SIDEWALK		RAIL ROAD	
CONCRETE DITCH		RETAINING WALL	
CONCRETE SIDEWALK		STRIPING (CONTINUOUS WHITE)	
CULVERT		STRIPING (DASHED WHITE)	
EARTH DITCH		STRIPING (CONTINUOUS YELLOW)	
EDGE OF GRAVEL		STRIPING (DASHED YELLOW)	
EDGE OF PAVEMENT		TOP OF SLOPE	
FENCE (HT & MATL NOTED)		CONTOUR LINES (SHOWN BETWEEN TOP & TOE)	
GUARD RAIL		TOE OF SLOPE	
HATCHING: INDICATES ASPHALT REMOVAL		TRAFFIC DETECTOR LOOP	
HATCHING: INDICATES CONCRETE REMOVAL		UTILITY LINE (ABANDON) (THIS CASE A WATER LINE)	
HATCHING: INDICATES STAGING AREA		UTILITY LINE (CABLE TV)	
LINE (CENTER OF IMPROVEMENTS)		UTILITY LINE (ELECTRIC)	
LINE (CITY LIMITS)		UTILITY LINE (FIBER OPTIC)	
LINE (CONTROL)		UTILITY LINE (GAS)	
LINE (EASEMENT)		UTILITY LINE (HIGH VOLTAGE OVERHEAD POWER)	
LINE (MONUMENT/SECTION)		UTILITY LINE (OVERHEAD POWER)	
LINE (PROPERTY)		UTILITY LINE (OVERHEAD TELEPHONE)	
LINE (RIGHT OF WAY)		UTILITY LINE (SANITARY SEWER)	
MATCH LINE		UTILITY LINE (SANITARY SEWER FORCE MAIN)	
PIPE (IRRIGATION)		UTILITY LINE (SANITARY SEWER SERVICE)	
PIPE (SIPHON)		UTILITY LINE (STORM SEWER)	
		UTILITY LINE (STORM SEWER, PERFORATED)	
		UTILITY LINE (STORM/SANITARY SEWER SEWER COMBINATION)	
		UTILITY LINE (TELEPHONE)	
		UTILITY LINE (WATER)	

**SYMBOLS**

BENCH MARK	
CATCH BASIN	
CLEAN OUT	
CURB STOP	
FIRE HYDRANT	
GUY WIRE ANCHOR	
HEADGATE	
IRRIGATION PUMP	
MAILBOX	
MANHOLE (ELECTRIC)	
MANHOLE (GAS)	
MANHOLE (SANITARY/STORM)	
MANHOLE (TELEPHONE)	
MANHOLE (TV)	
MANHOLE (WATER)	
METER (GAS)	
METER (WATER)	
PEDESTAL (TELEPHONE)	
PEDESTAL (TV)	
PROPERTY PIN	
PULL BOX	
REDUCER FITTING	
SIGN OR POST (SIGN TYPE NOTED)	
SPRINKLER HEAD	
STREET LIGHT	
SURVEY MONUMENT (CITY)	
SURVEY MONUMENT (TYPE NOTED)	
TEST HOLE	
TRAFFIC PAINT MARKING	
TRAFFIC SIGNAL POLE AND MAST ARM	
UTILITY POLE	
VALVE (GAS)	
VALVE (IRRIGATION)	
VALVE (WATER)	
VEGETATION (HEDGE OR BUSH)	
VEGETATION (TREE STUMP)	
VEGETATION (TREE) (CALIPER SIZE NOTED)	
WATER HYDRANT	
WEIR	
YARD LIGHT	



REVISION	DESCRIPTION	DATE	DRAWN BY	DATE
REVISION Δ REV 1			D.J.M.	01/2024
REVISION Δ REV 2			D.J.M.	01/2024
REVISION Δ REV 3			I.I.	01/2024
REVISION Δ REV 4			I.I.	01/2024

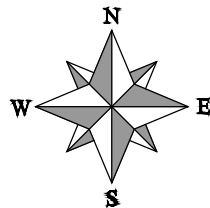
SEE PLAN FOR SCALE INFO



**PUBLIC WORKS ENGINEERING DIVISION**  
PROJECT NO. F001642

**SEWER LINE REPLACEMENT – PARADISE HILLS**  
**STANDARD ABBREVIATIONS LEGENDS AND SYMBOLS**  
January 2, 2024

N:\EngProj\F001642 (Sewer Line Replace - Paradise Hills)\60CAD\DESIGN\STANDARD ABBREVIATIONS LEGENDS AND SYMBOLS.dwg - PLOTTED 1/2/2024 3:10:57 PM

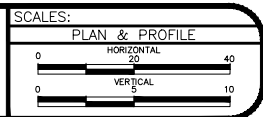


26 1/2 RD



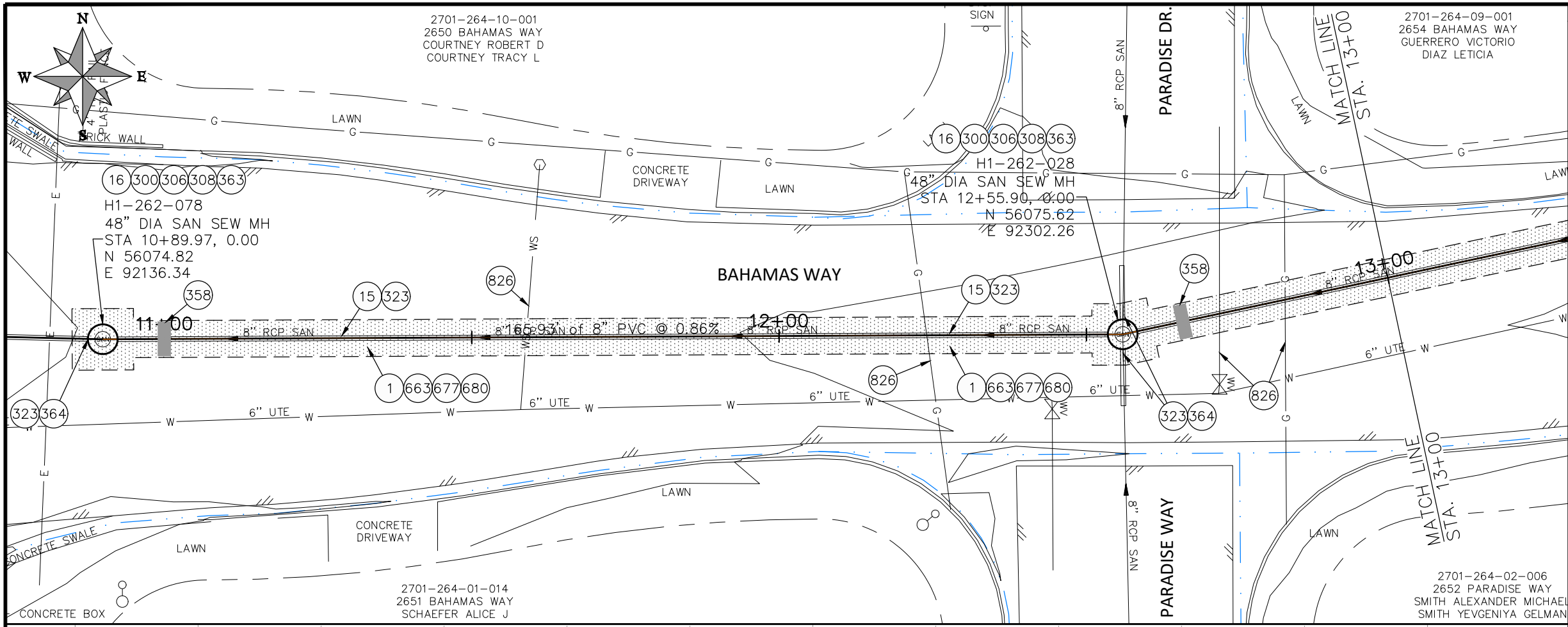
REVISION	DESCRIPTION	DATE
REVISION $\Delta$ REV 1		
REVISION $\Delta$ REV 2		
REVISION $\Delta$ REV 3		
REVISION $\Delta$ REV 4		

DRAWN BY D.J.M. DATE 01/2024  
 DESIGNED BY D.J.M. DATE 01/2024  
 CHECKED BY I.T. DATE 01/2024  
 APPROVED BY I.T. DATE 01/2024



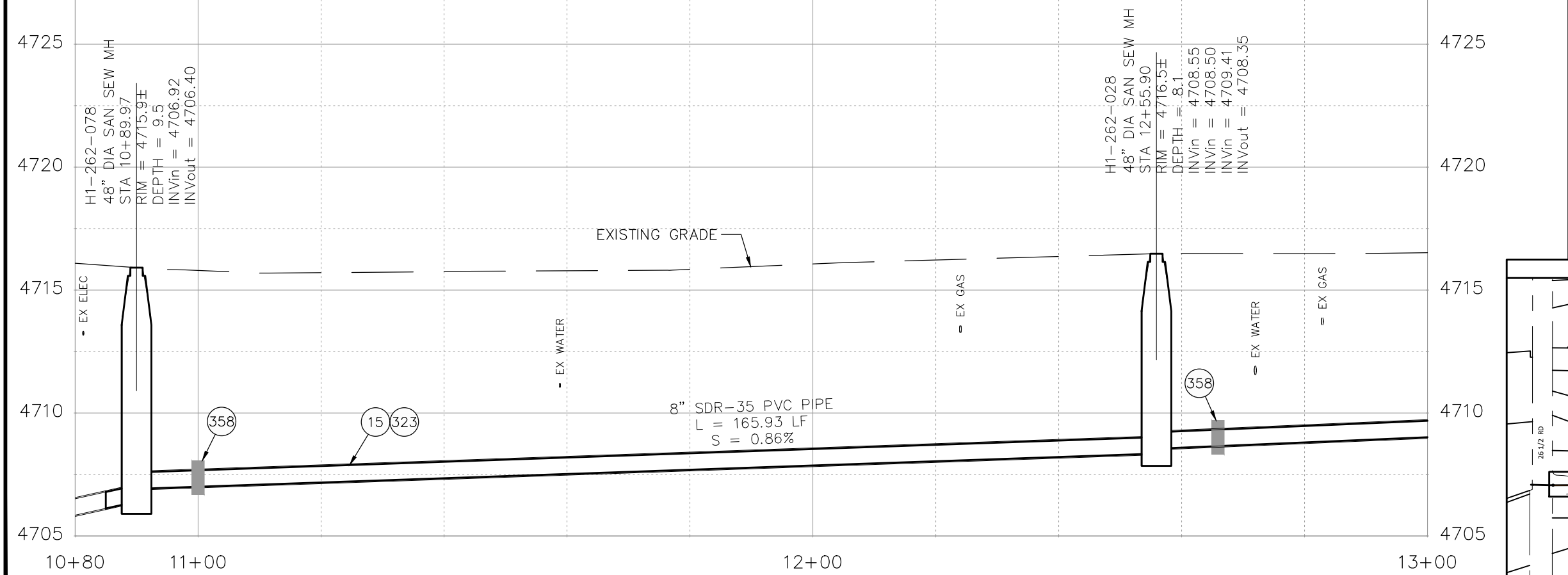
PUBLIC WORKS  
 ENGINEERING DIVISION  
 PROJECT NO. F001642

SEWER LINE REPLACEMENT - PARADISE HILLS  
 PROJECT CONTROL  
 January 2, 2024



**CONSTRUCTION NOTES**

- 1 202 - REMOVAL OF ASPHALT MAT. CUT AND REMOVE ASPHALT AS SHOWN. (INDICATED BY DOT HATCH PATTERN)
- 15 202 - REMOVAL OF PIPE AS SHOWN. (SIZE AND TYPE AS SHOWN ON PLAN)
- 16 202 - REMOVAL OF MANHOLE. CONTRACTOR SHALL SALVAGE RING AND COVER AND DELIVER TO CITY SHOPS.
- 300 102.11/108.5 - SANITARY SEWER BASIC MANHOLE (48" I.D.). INCLUDES CONNECTION OF ADJACENT SEWER LINE, FORMING INVERTS AND ADJUSTING TO FINAL GRADE. (SEE CITY OF GRAND JUNCTION STANDARD DETAIL SS-02).
- 306 102.11/108.5 - MANHOLE BARREL SECTION (D>5") (48" I.D.).
- 308 102.11/108.5 - MANHOLE INTERIOR CORROSION PROTECTION (CASTAGRA ECODUR 201 PROTECTIVE COATING OR APPROVED EQUAL) (PROTECTIVE COATING SHALL BE APPLIED TO PREPARED MANHOLE INVERT, BENCH, BARRELS, AND CONE SECTIONS. MANHOLE INVERTS AND BENCHES SHALL BE COATED PRIOR TO WASTEWATER INTRODUCTION)
- 323 102.9/108.2 - 8" GRAVITY SEWER PIPE (SDR 35 PVC). INCLUDES TYPE A BEDDING AND HAUNCHING MATERIAL AND BACKFILL OF TRENCH WITH NATIVE MATERIALS MEETING 103.16 EARTH BACKFILL MATERIAL.
- 358 103 - CLAY CUT-OFF WALL (INCIDENTAL TO SEWER INSTALLATION PAY ITEM)
- 363 BYPASS PUMPING (AS DEEMED NECESSARY BY THE CITY OR CONTRACTOR)
- 364 CONNECT TO EXISTING SEWER PIPE. THE CONTRACT PRICE FOR SEWER PIPE SHALL INCLUDE THE COST OF CONNECTION TO EXISTING PIPELINE.
- 663 304 - AGGREGATE BASE COURSE (CLASS 6) (6" THICK)
- 677 401.08 - HOT BITUMINOUS PAVEMENT (2" THICK) (GRADING SX, BINDER GRADE PG 64-22) (ONE 2" LIFTS)
- 680 401.08 - HOT BITUMINOUS PAVEMENT (PATCHING) (2" THICK) (GRADING SX, BINDER GRADE PG 64-22, GYR = 75) (ONE 2" LIFT TOP MAT) (T-TOP PATCH) (SEE CITY STD. DETAIL GU-03)
- 826 PROTECT EXISTING UTILITY LINE IN PLACE.



REVISION	DESCRIPTION	DATE	DRAWN BY	DATE
REV 1			D.J.M.	01/2024
REV 2			D.J.M.	01/2024
REV 3			I.T.	01/2024
REV 4			I.T.	01/2024

**CITY OF Grand Junction COLORADO**

**PUBLIC WORKS ENGINEERING DIVISION**

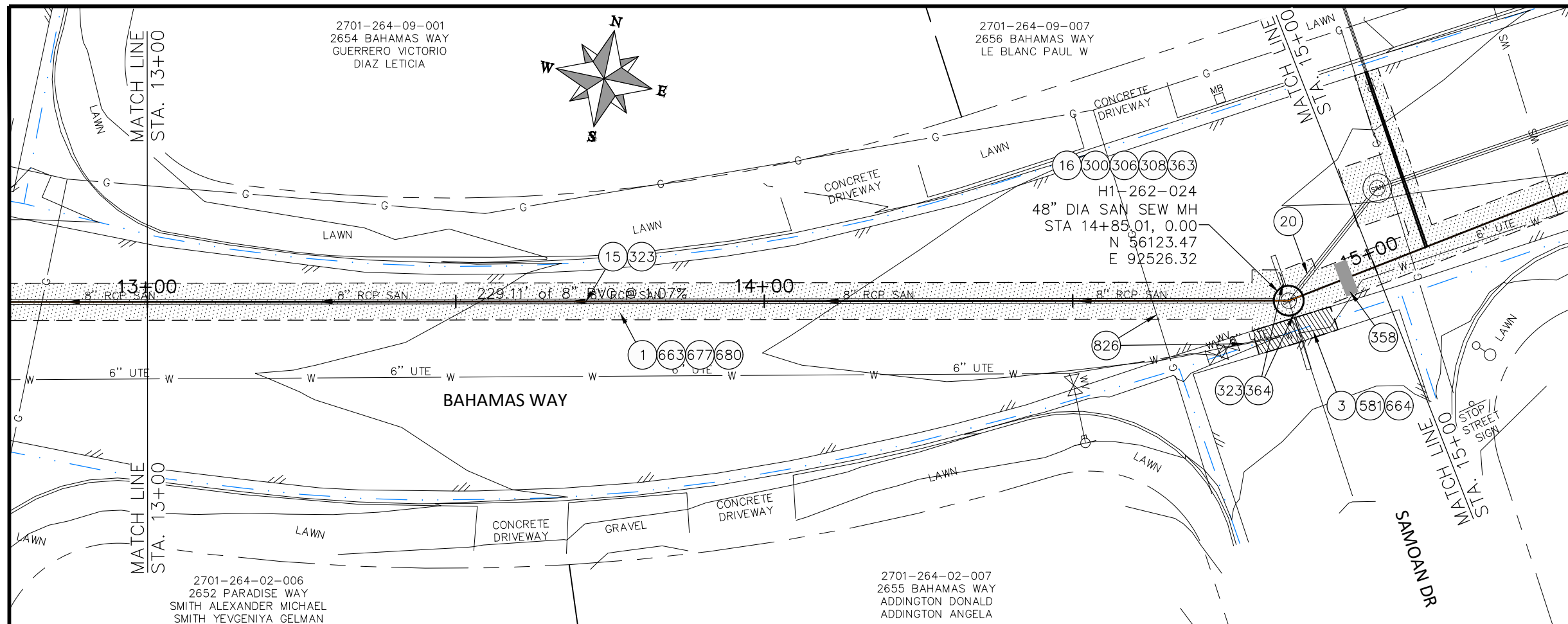
PROJECT NO. F001642

**SEWER LINE REPLACEMENT - PARADISE HILLS**

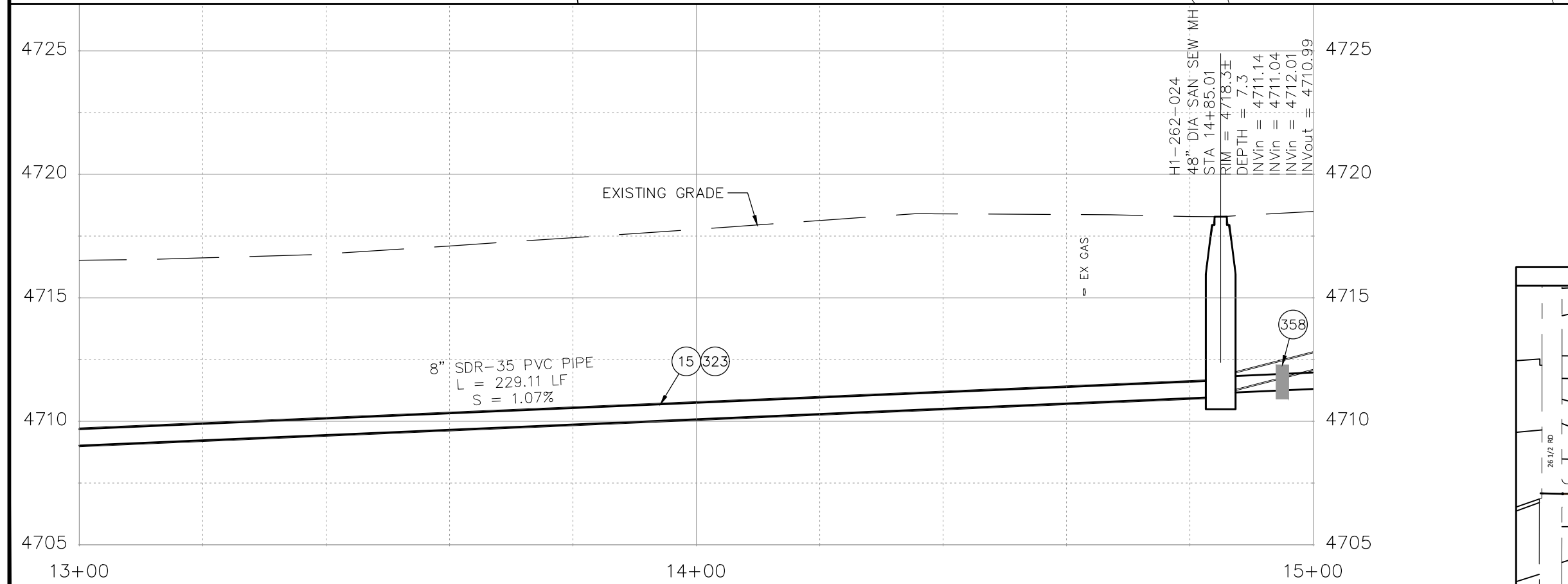
**UTILITY PLAN AND PROFILE - 1**

January 2, 2024

4



- ### CONSTRUCTION NOTES
- 1 202 - REMOVAL OF ASPHALT MAT. CUT AND REMOVE ASPHALT AS SHOWN. (INDICATED BY DOT HATCH PATTERN)
  - 3 202 - REMOVAL OF CONCRETE. SAW CUT AND REMOVE CONCRETE AS SHOWN. (INDICATED BY CROSS HATCH PATTERN) INCLUDES BUT NOT LIMITED TO CURB, GUTTER, SIDEWALK, DRIVEWAY, SLABS, V-PAN, CURB RAMPS, INTERSECTION CORNERS, APRONS, AND LANDSCAPE BORDERS
  - 15 202 - REMOVAL OF PIPE AS SHOWN. (SIZE AND TYPE AS SHOWN ON PLAN)
  - 16 202 - REMOVAL OF MANHOLE. CONTRACTOR SHALL SALVAGE RING AND COVER AND DELIVER TO CITY SHOPS.
  - 20 202 - ABANDON PIPE. ABANDON BY PLUGGING REMAINING ENDS WITH CONCRETE.
  - 300 102.11/108.5 - SANITARY SEWER BASIC MANHOLE (48" I.D.). INCLUDES CONNECTION OF ADJACENT SEWER LINE, FORMING INVERTS AND ADJUSTING TO FINAL GRADE. (SEE CITY OF GRAND JUNCTION STANDARD DETAIL SS-02).
  - 306 102.11/108.5 - MANHOLE BARREL SECTION (D>5') (48" I.D.).
  - 308 102.11/108.5 - MANHOLE INTERIOR CORROSION PROTECTION (CASTAGRA ECODUR 201 PROTECTIVE COATING OR APPROVED EQUAL) (PROTECTIVE COATING SHALL BE APPLIED TO PREPARED MANHOLE INVERT, BENCH, BARRELS, AND CONE SECTIONS. MANHOLE INVERTS AND BENCHES SHALL BE COATED PRIOR TO WASTEWATER INTRODUCTION)
  - 323 102.9/108.2 - 8" GRAVITY SEWER PIPE (SDR 35 PVC). INCLUDES TYPE A BEDDING AND HAUNCHING MATERIAL AND BACKFILL OF TRENCH WITH NATIVE MATERIALS MEETING 103.16 EARTH BACKFILL MATERIAL.
  - 358 103 - CLAY CUT-OFF WALL (INCIDENTAL TO SEWER INSTALLATION PAY ITEM)
  - 363 BYPASS PUMPING (AS DEEMED NECESSARY BY THE CITY OR CONTRACTOR)
  - 364 CONNECT TO EXISTING SEWER PIPE. THE CONTRACT PRICE FOR SEWER PIPE SHALL INCLUDE THE COST OF CONNECTION TO EXISTING PIPELINE.
  - 581 608.06 - CONCRETE DRAINAGE PAN (6' WIDE) (8" THICK MIN.)
  - 663 304 - AGGREGATE BASE COURSE (CLASS 6) (6" THICK)
  - 664 304 - AGGREGATE BASE COURSE (CLASS 6) (12" THICK)
  - 677 401.08 - HOT BITUMINOUS PAVEMENT (2" THICK) (GRADING SX, BINDER GRADE PG 64-22) (ONE 2" LIFTS)
  - 680 401.08 - HOT BITUMINOUS PAVEMENT (PATCHING) (2" THICK) (GRADING SX, BINDER GRADE PG 64-22, GYR = 75) (ONE 2" LIFT TOP MAT) (T-TOP PATCH) (SEE CITY STD. DETAIL GU-03)
  - 826 PROTECT EXISTING UTILITY LINE IN PLACE.

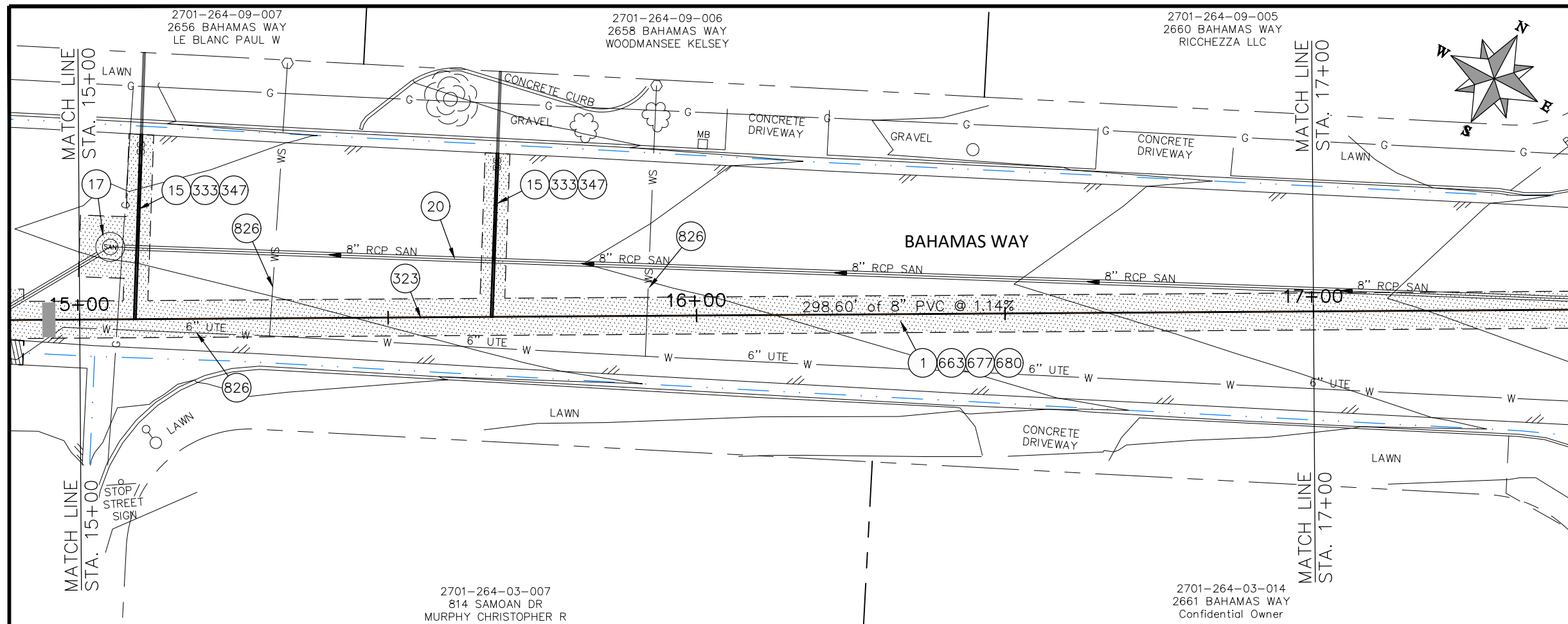


REVISION	DESCRIPTION	DATE	DRAWN BY	DATE
REV 1			D.J.M.	01/2024
REV 2			D.J.M.	01/2024
REV 3			I.I.	01/2024
REV 4			I.I.	01/2024

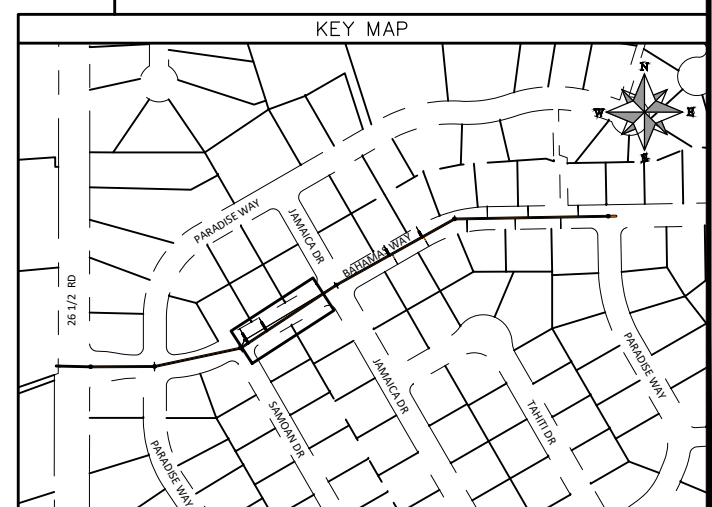
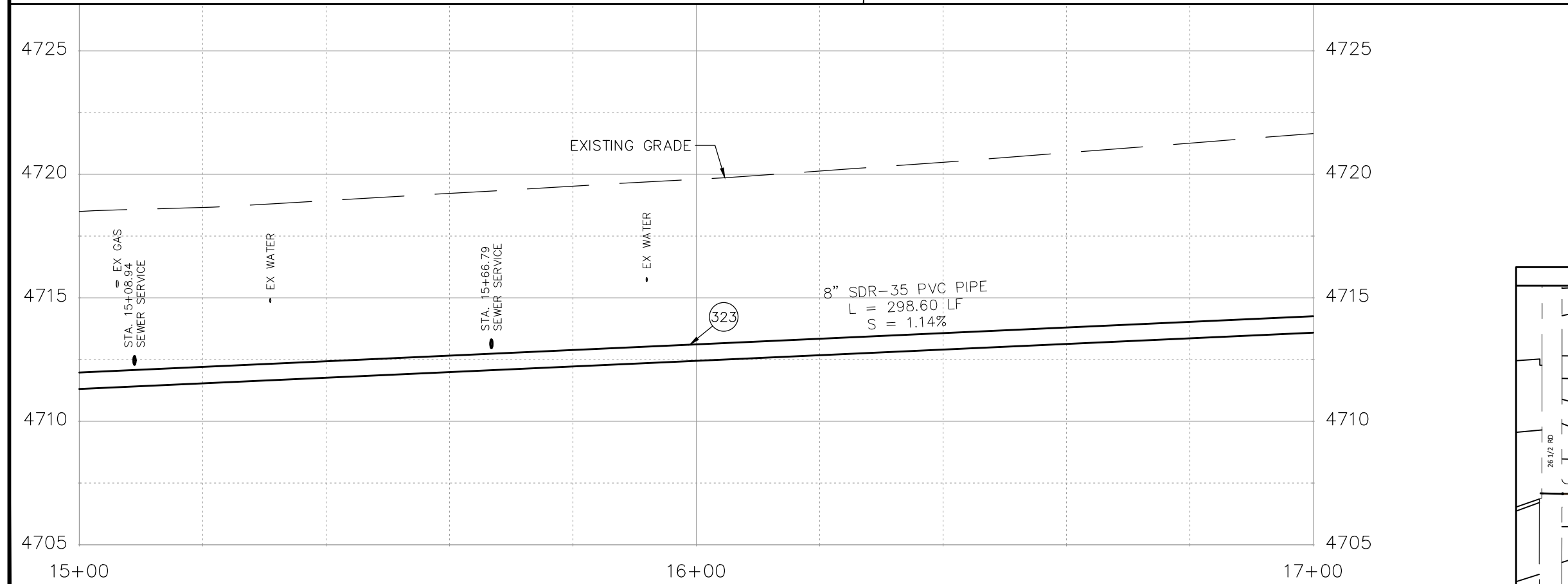
SCALES:  
 HORIZONTAL: 1" = 40'  
 VERTICAL: 1" = 10'

**PUBLIC WORKS  
ENGINEERING DIVISION**  
 PROJECT NO. F001642

**SEWER LINE REPLACEMENT - PARADISE HILLS**  
**UTILITY PLAN AND PROFILE - 2**  
 January 2, 2024



- ### CONSTRUCTION NOTES
- 1 202 - REMOVAL OF ASPHALT MAT. CUT AND REMOVE ASPHALT AS SHOWN. (INDICATED BY DOT HATCH PATTERN)
  - 3 202 - REMOVAL OF CONCRETE. SAW CUT AND REMOVE CONCRETE AS SHOWN. (INDICATED BY CROSS HATCH PATTERN) INCLUDES BUT NOT LIMITED TO CURB, GUTTER, SIDEWALK, DRIVEWAY, SLABS, V-PAN, CURB RAMPS, INTERSECTION CORNERS, APRONS, AND LANDSCAPE BORDERS
  - 15 202 - REMOVAL OF PIPE AS SHOWN. (SIZE AND TYPE AS SHOWN ON PLAN)
  - 16 202 - REMOVAL OF MANHOLE. CONTRACTOR SHALL SALVAGE RING AND COVER AND DELIVER TO CITY SHOPS.
  - 17 202 - REMOVE MANHOLE CONE SECTION, RING, AND COVER. CONTRACTOR SHALL SALVAGE RING AND COVER AND DELIVER TO CITY SHOPS. CONTRACTOR SHALL FILL REMAINING BARREL SECTIONS WITH FLOW FILL MATERIAL.
  - 20 202 - ABANDON PIPE. ABANDON BY PLUGGING REMAINING ENDS WITH CONCRETE.
  - 300 102.11/108.5 - SANITARY SEWER BASIC MANHOLE (48" I.D.). INCLUDES CONNECTION OF ADJACENT SEWER LINE, FORMING INVERTS AND ADJUSTING TO FINAL GRADE. (SEE CITY OF GRAND JUNCTION STANDARD DETAIL SS-02).
  - 306 102.11/108.5 - MANHOLE BARREL SECTION (D>5) (48" I.D.).
  - 308 102.11/108.5 - MANHOLE INTERIOR CORROSION PROTECTION (CASTAGRA ECODUR 201 PROTECTIVE COATING OR APPROVED EQUAL) (PROTECTIVE COATING SHALL BE APPLIED TO PREPARED MANHOLE INVERT, BENCH, BARRELS, AND CONE SECTIONS. MANHOLE INVERTS AND BENCHES SHALL BE COATED PRIOR TO WASTEWATER INTRODUCTION)
  - 323 102.9/108.2 - 8" GRAVITY SEWER PIPE (SDR 35 PVC). INCLUDES TYPE A BEDDING AND HAUNCHING MATERIAL AND BACKFILL OF TRENCH WITH NATIVE MATERIALS MEETING 103.16 EARTH BACKFILL MATERIAL.
  - 333 102.9/108.2 - 4" SEWER SERVICE PIPE (SDR 35 PVC). INCLUDES TYPE A BEDDING AND HAUNCHING MATERIAL, BACKFILL OF TRENCH WITH NATIVE MATERIALS MEETING 103.16 EARTH BACKFILL MATERIAL.
  - 347 102.9/108.3 - 8" x 4" SEWER SERVICE TAP. FULL BODY WYE (SEE STD. DETAIL SS-06).
  - 358 103 - CLAY CUT-OFF WALL (INCIDENTAL TO SEWER INSTALLATION PAY ITEM)
  - 363 BYPASS PUMPING (AS DEEMED NECESSARY BY THE CITY OR CONTRACTOR)
  - 364 CONNECT TO EXISTING SEWER PIPE. THE CONTRACT PRICE FOR SEWER PIPE SHALL INCLUDE THE COST OF CONNECTION TO EXISTING PIPELINE.
  - 581 608.06 - CONCRETE DRAINAGE PAN (6' WIDE) (8" THICK MIN.)
  - 663 304 - AGGREGATE BASE COURSE (CLASS 6) (6" THICK)
  - 664 304 - AGGREGATE BASE COURSE (CLASS 6) (12" THICK)
  - 677 401.08 - HOT BITUMINOUS PAVEMENT (2" THICK) (GRADING SX, BINDER GRADE PG 64-22) (ONE 2" LIFTS)
  - 680 401.08 - HOT BITUMINOUS PAVEMENT (PATCHING) (2" THICK) (GRADING SX, BINDER GRADE PG 64-22, GYR = 75) (ONE 2" LIFT TOP MAT) (T-TOP PATCH) (SEE CITY STD. DETAIL GU-03)
  - 826 PROTECT EXISTING UTILITY LINE IN PLACE.



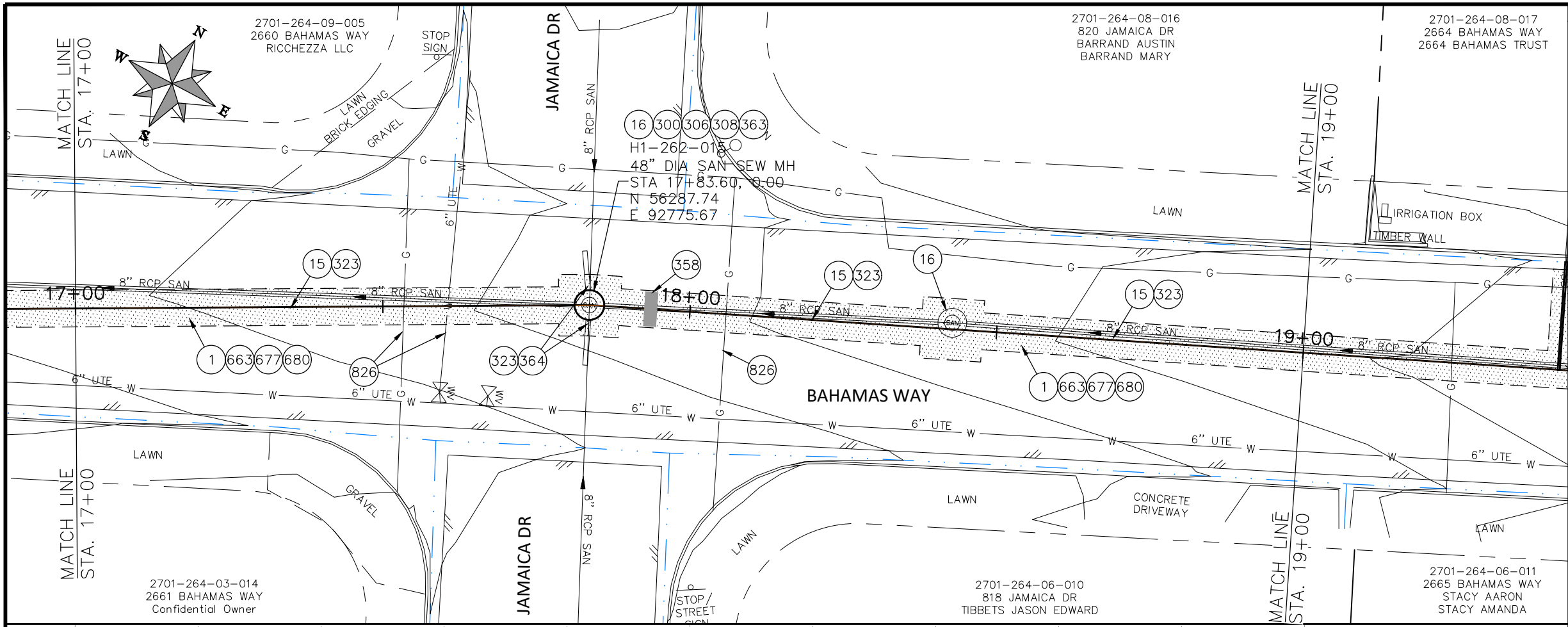
REVISION	DESCRIPTION	DATE	DRAWN BY	DATE
REVISION 1			D.J.M.	01/2024
REVISION 2			D.J.M.	01/2024
REVISION 3			I.I.	01/2024
REVISION 4			I.I.	01/2024

SCALES:  
 HORIZONTAL: 1" = 40'  
 VERTICAL: 1" = 10'

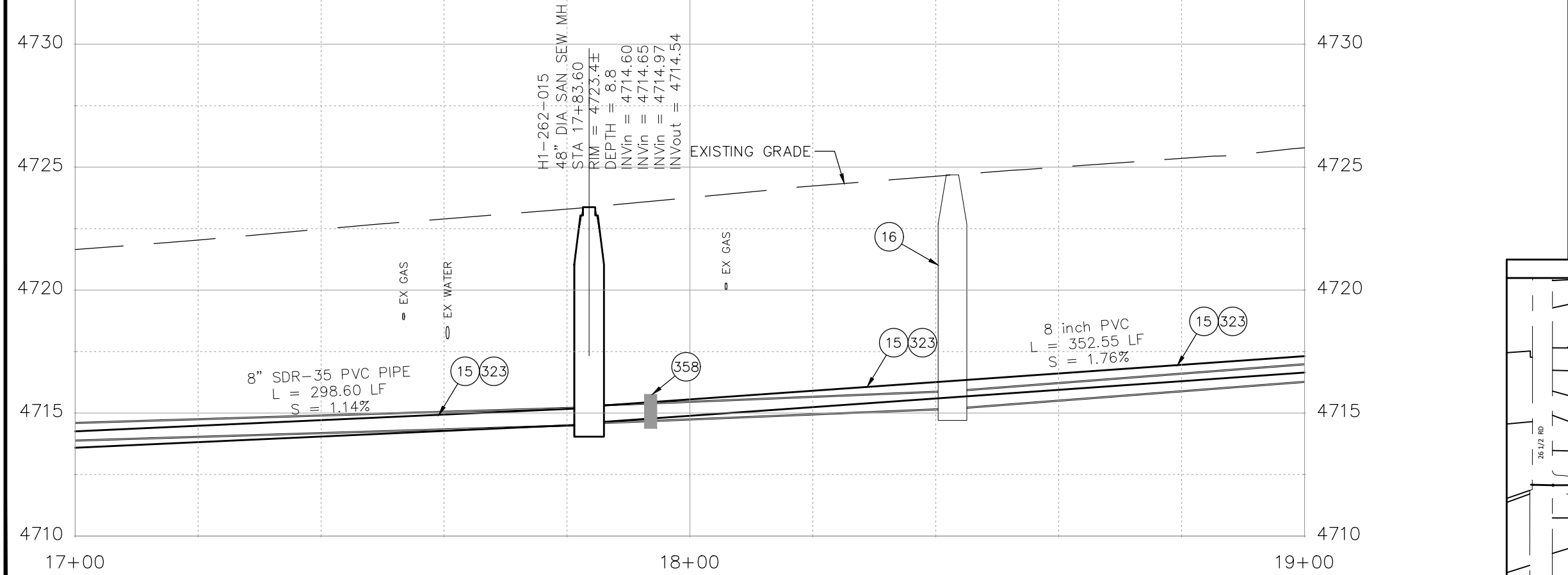
**PUBLIC WORKS  
 ENGINEERING DIVISION**  
 PROJECT NO. F001642

**SEWER LINE REPLACEMENT - PARADISE HILLS**  
 UTILITY PLAN AND PROFILE - 3  
 January 2, 2024

N:\Eng\Proj\F001642 (Sewer Line Replace - Paradise Hills)\60CAD\DESIGN\SANITARY SEWER PLAN AND PROFILE F001642.dwg - PLOTTED 1/2/2024 3:11:26 PM



- CONSTRUCTION NOTES**
- 1 202 - REMOVAL OF ASPHALT MAT. CUT AND REMOVE ASPHALT AS SHOWN. (INDICATED BY DOT HATCH PATTERN)
  - 3 202 - REMOVAL OF CONCRETE. SAW CUT AND REMOVE CONCRETE AS SHOWN. (INDICATED BY CROSS HATCH PATTERN) INCLUDES BUT NOT LIMITED TO CURB, GUTTER, SIDEWALK, DRIVEWAY, SLABS, V-PAN, CURB RAMPS, INTERSECTION CORNERS, APRONS, AND LANDSCAPE BORDERS
  - 15 202 - REMOVAL OF PIPE AS SHOWN. (SIZE AND TYPE AS SHOWN ON PLAN)
  - 16 202 - REMOVAL OF MANHOLE. CONTRACTOR SHALL SALVAGE RING AND COVER AND DELIVER TO CITY SHOPS.
  - 17 202 - REMOVE MANHOLE CONE SECTION, RING, AND COVER. CONTRACTOR SHALL SALVAGE RING AND COVER AND DELIVER TO CITY SHOPS. CONTRACTOR SHALL FILL REMAINING BARREL SECTIONS WITH FLOW FILL MATERIAL.
  - 20 202 - ABANDON PIPE. ABANDON BY PLUGGING REMAINING ENDS WITH CONCRETE.
  - 300 102.11/108.5 - SANITARY SEWER BASIC MANHOLE (48" I.D.). INCLUDES CONNECTION OF ADJACENT SEWER LINE, FORMING INVERTS AND ADJUSTING TO FINAL GRADE. (SEE CITY OF GRAND JUNCTION STANDARD DETAIL SS-02).
  - 306 102.11/108.5 - MANHOLE BARREL SECTION (D>5) (48" I.D.).
  - 308 102.11/108.5 - MANHOLE INTERIOR CORROSION PROTECTION (CASTAGRA ECODUR 201 PROTECTIVE COATING OR APPROVED EQUAL) (PROTECTIVE COATING SHALL BE APPLIED TO PREPARED MANHOLE INVERT, BENCH, BARRELS, AND CONE SECTIONS. MANHOLE INVERTS AND BENCHES SHALL BE COATED PRIOR TO WASTEWATER INTRODUCTION)
  - 323 102.9/108.2 - 8" GRAVITY SEWER PIPE (SDR 35 PVC). INCLUDES TYPE A BEDDING AND HAUNCHING MATERIAL AND BACKFILL OF TRENCH WITH NATIVE MATERIALS MEETING 103.16 EARTH BACKFILL MATERIAL.
  - 333 102.9/108.2 - 4" SEWER SERVICE PIPE (SDR 35 PVC). INCLUDES TYPE A BEDDING AND HAUNCHING MATERIAL, BACKFILL OF TRENCH WITH NATIVE MATERIALS MEETING 103.16 EARTH BACKFILL MATERIAL.
  - 347 102.9/108.3 - 8" x 4" SEWER SERVICE TAP. FULL BODY WYE (SEE STD. DETAIL SS-06).
  - 358 103 - CLAY CUT-OFF WALL (INCIDENTAL TO SEWER INSTALLATION PAY ITEM)
  - 363 BYPASS PUMPING (AS DEEMED NECESSARY BY THE CITY OR CONTRACTOR)
  - 364 CONNECT TO EXISTING SEWER PIPE. THE CONTRACT PRICE FOR SEWER PIPE SHALL INCLUDE THE COST OF CONNECTION TO EXISTING PIPELINE.
  - 581 608.06 - CONCRETE DRAINAGE PAN (6' WIDE) (8" THICK MIN.)
  - 663 304 - AGGREGATE BASE COURSE (CLASS 6) (6" THICK)
  - 664 304 - AGGREGATE BASE COURSE (CLASS 6) (12" THICK)
  - 677 401.08 - HOT BITUMINOUS PAVEMENT (2" THICK) (GRADING SX, BINDER GRADE PG 64-22) (ONE 2" LIFTS)
  - 680 401.08 - HOT BITUMINOUS PAVEMENT (PATCHING) (2" THICK) (GRADING SX, BINDER GRADE PG 64-22, GYR = 75) (ONE 2" LIFT TOP MAT) (T-TOP PATCH) (SEE CITY STD. DETAIL GU-03)
  - 826 PROTECT EXISTING UTILITY LINE IN PLACE.



REVISION	DESCRIPTION	DATE	DRAWN BY	DATE
REV 1			D.J.M.	01/2024
REV 2			D.J.M.	01/2024
REV 3			I.T.	01/2024
REV 4			I.T.	01/2024

**CITY OF Grand Junction COLORADO**

**PUBLIC WORKS ENGINEERING DIVISION**

PROJECT NO. F001642

**SEWER LINE REPLACEMENT - PARADISE HILLS**

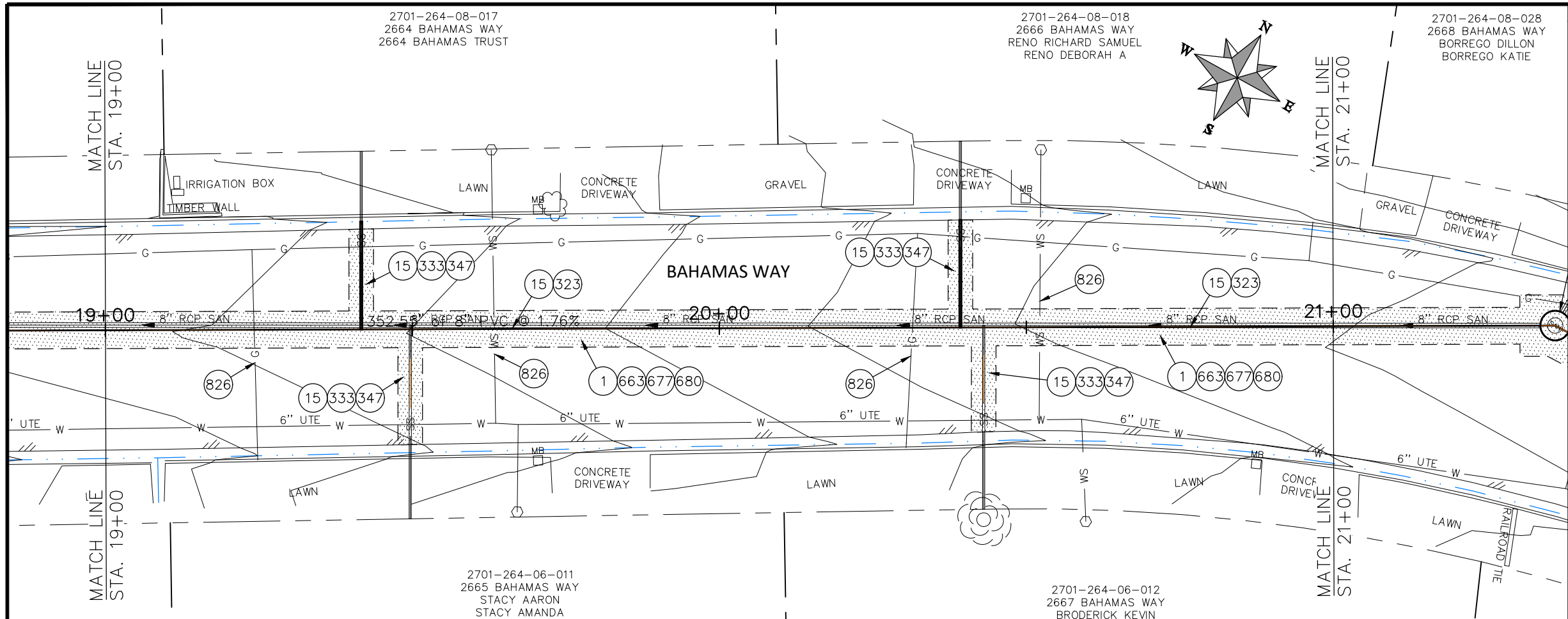
**UTILITY PLAN AND PROFILE - 4**

January 2, 2024

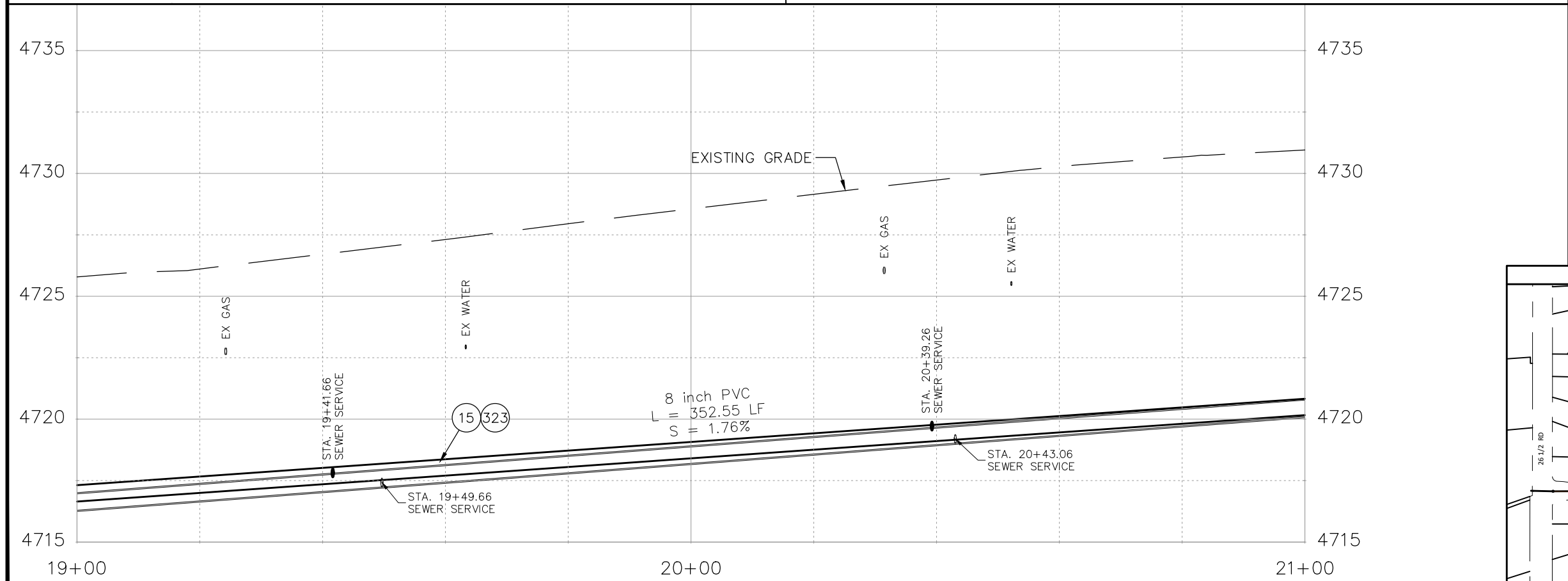
7

N:\EngProj\F001642 (Sewer Line Replace - Paradise Hills)\60CAD\DESIGN\SANITARY SEWER PLAN AND PROFILE F001642.dwg - PLOTTED 1/2/2024 3:11:31 PM





- ### CONSTRUCTION NOTES
- 1 202 - REMOVAL OF ASPHALT MAT. CUT AND REMOVE ASPHALT AS SHOWN. (INDICATED BY DOT HATCH PATTERN)
  - 3 202 - REMOVAL OF CONCRETE. SAW CUT AND REMOVE CONCRETE AS SHOWN. (INDICATED BY CROSS HATCH PATTERN) INCLUDES BUT NOT LIMITED TO CURB, GUTTER, SIDEWALK, DRIVEWAY, SLABS, V-PAN, CURB RAMPS, INTERSECTION CORNERS, APRONS, AND LANDSCAPE BORDERS
  - 15 202 - REMOVAL OF PIPE AS SHOWN. (SIZE AND TYPE AS SHOWN ON PLAN)
  - 16 202 - REMOVAL OF MANHOLE. CONTRACTOR SHALL SALVAGE RING AND COVER AND DELIVER TO CITY SHOPS.
  - 17 202 - REMOVE MANHOLE CONE SECTION, RING, AND COVER. CONTRACTOR SHALL SALVAGE RING AND COVER AND DELIVER TO CITY SHOPS. CONTRACTOR SHALL FILL REMAINING BARREL SECTIONS WITH FLOW FILL MATERIAL.
  - 20 202 - ABANDON PIPE. ABANDON BY PLUGGING REMAINING ENDS WITH CONCRETE.
  - 300 102.11/108.5 - SANITARY SEWER BASIC MANHOLE (48" I.D.). INCLUDES CONNECTION OF ADJACENT SEWER LINE, FORMING INVERTS AND ADJUSTING TO FINAL GRADE. (SEE CITY OF GRAND JUNCTION STANDARD DETAIL SS-02).
  - 306 102.11/108.5 - MANHOLE BARREL SECTION (D>5) (48" I.D.).
  - 308 102.11/108.5 - MANHOLE INTERIOR CORROSION PROTECTION (CASTAGRA ECODUR 201 PROTECTIVE COATING OR APPROVED EQUAL) (PROTECTIVE COATING SHALL BE APPLIED TO PREPARED MANHOLE INVERT, BENCH, BARRELS, AND CONE SECTIONS. MANHOLE INVERTS AND BENCHES SHALL BE COATED PRIOR TO WASTEWATER INTRODUCTION)
  - 323 102.9/108.2 - 8" GRAVITY SEWER PIPE (SDR 35 PVC). INCLUDES TYPE A BEDDING AND HAUNCHING MATERIAL AND BACKFILL OF TRENCH WITH NATIVE MATERIALS MEETING 103.16 EARTH BACKFILL MATERIAL.
  - 333 102.9/108.2 - 4" SEWER SERVICE PIPE (SDR 35 PVC). INCLUDES TYPE A BEDDING AND HAUNCHING MATERIAL, BACKFILL OF TRENCH WITH NATIVE MATERIALS MEETING 103.16 EARTH BACKFILL MATERIAL.
  - 347 102.9/108.3 - 8" x 4" SEWER SERVICE TAP. FULL BODY WYE (SEE STD. DETAIL SS-06).
  - 358 103 - CLAY CUT-OFF WALL (INCIDENTAL TO SEWER INSTALLATION PAY ITEM)
  - 363 BYPASS PUMPING (AS DEEMED NECESSARY BY THE CITY OR CONTRACTOR)
  - 364 CONNECT TO EXISTING SEWER PIPE. THE CONTRACT PRICE FOR SEWER PIPE SHALL INCLUDE THE COST OF CONNECTION TO EXISTING PIPELINE.
  - 581 608.06 - CONCRETE DRAINAGE PAN (6' WIDE) (8" THICK MIN.)
  - 663 304 - AGGREGATE BASE COURSE (CLASS 6) (6" THICK)
  - 664 304 - AGGREGATE BASE COURSE (CLASS 6) (12" THICK)
  - 677 401.08 - HOT BITUMINOUS PAVEMENT (2" THICK) (GRADING SX, BINDER GRADE PG 64-22) (ONE 2" LIFTS)
  - 680 401.08 - HOT BITUMINOUS PAVEMENT (PATCHING) (2" THICK) (GRADING SX, BINDER GRADE PG 64-22, GYR = 75) (ONE 2" LIFT TOP MAT) (T-TOP PATCH) (SEE CITY STD. DETAIL GU-03)
  - 826 PROTECT EXISTING UTILITY LINE IN PLACE.



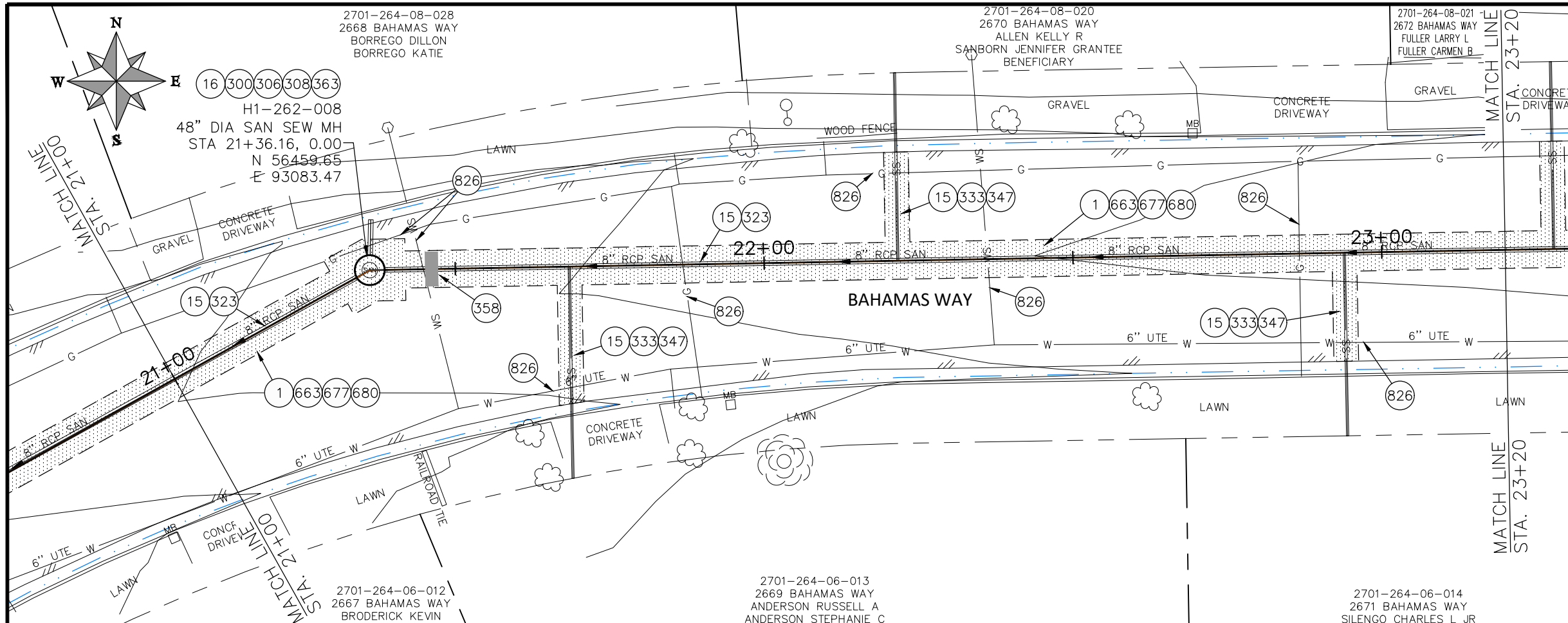
REVISION	DESCRIPTION	DATE	DRAWN BY	DATE
REVISION 1	REV 1		D.J.M.	01/2024
REVISION 2	REV 2		D.J.M.	01/2024
REVISION 3	REV 3		I.I.	01/2024
REVISION 4	REV 4		I.I.	01/2024

SCALES:  
 HORIZONTAL: 1" = 40'  
 VERTICAL: 1" = 10'

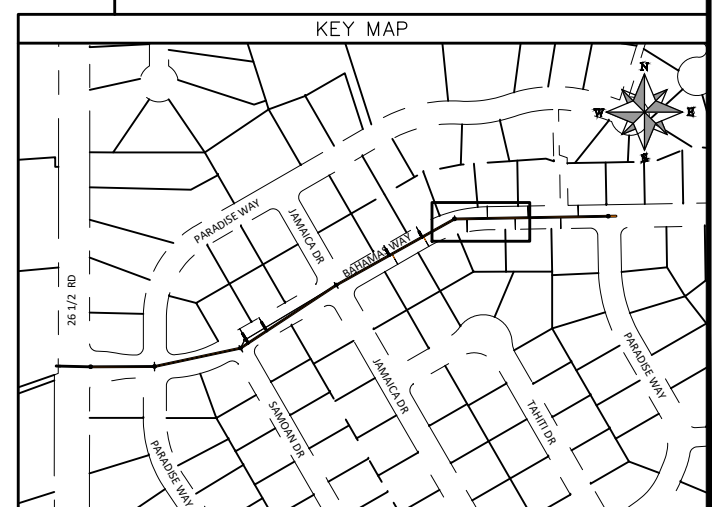
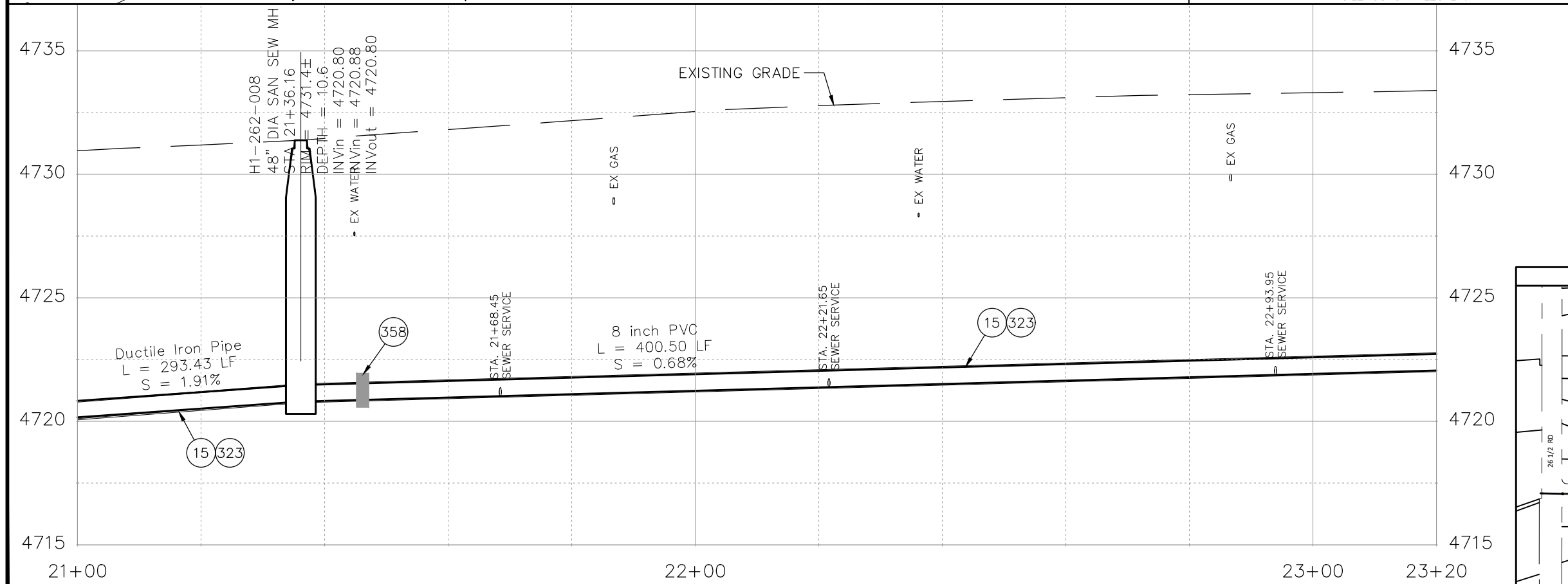
**CITY OF Grand Junction COLORADO**  
**PUBLIC WORKS ENGINEERING DIVISION**  
 PROJECT NO. F001642

**SEWER LINE REPLACEMENT - PARADISE HILLS**  
**UTILITY PLAN AND PROFILE - 5**  
 January 2, 2024

N:\EngProj\F001642 (Sewer Line Replace - Paradise Hills)\60CAD\DESIGN\SANITARY SEWER PLAN AND PROFILE\_F001642.dwg - PLOTTED 1/2/2024 3:11:36 PM



- ### CONSTRUCTION NOTES
- 1 202 - REMOVAL OF ASPHALT MAT. CUT AND REMOVE ASPHALT AS SHOWN. (INDICATED BY DOT HATCH PATTERN)
  - 3 202 - REMOVAL OF CONCRETE. SAW CUT AND REMOVE CONCRETE AS SHOWN. (INDICATED BY CROSS HATCH PATTERN) INCLUDES BUT NOT LIMITED TO CURB, GUTTER, SIDEWALK, DRIVEWAY, SLABS, V-PAN, CURB RAMPS, INTERSECTION CORNERS, APRONS, AND LANDSCAPE BORDERS
  - 15 202 - REMOVAL OF PIPE AS SHOWN. (SIZE AND TYPE AS SHOWN ON PLAN)
  - 16 202 - REMOVAL OF MANHOLE. CONTRACTOR SHALL SALVAGE RING AND COVER AND DELIVER TO CITY SHOPS.
  - 17 202 - REMOVE MANHOLE CONE SECTION, RING, AND COVER. CONTRACTOR SHALL SALVAGE RING AND COVER AND DELIVER TO CITY SHOPS. CONTRACTOR SHALL FILL REMAINING BARREL SECTIONS WITH FLOW FILL MATERIAL.
  - 20 202 - ABANDON PIPE. ABANDON BY PLUGGING REMAINING ENDS WITH CONCRETE.
  - 300 102.11/108.5 - SANITARY SEWER BASIC MANHOLE (48" I.D.). INCLUDES CONNECTION OF ADJACENT SEWER LINE, FORMING INVERTS AND ADJUSTING TO FINAL GRADE. (SEE CITY OF GRAND JUNCTION STANDARD DETAIL SS-02).
  - 306 102.11/108.5 - MANHOLE BARREL SECTION (D>5) (48" I.D.).
  - 308 102.11/108.5 - MANHOLE INTERIOR CORROSION PROTECTION (CASTAGRA ECODUR 201 PROTECTIVE COATING OR APPROVED EQUAL) (PROTECTIVE COATING SHALL BE APPLIED TO PREPARED MANHOLE INVERT, BENCH, BARRELS, AND CONE SECTIONS. MANHOLE INVERTS AND BENCHES SHALL BE COATED PRIOR TO WASTEWATER INTRODUCTION)
  - 323 102.9/108.2 - 8" GRAVITY SEWER PIPE (SDR 35 PVC). INCLUDES TYPE A BEDDING AND HAUNCHING MATERIAL AND BACKFILL OF TRENCH WITH NATIVE MATERIALS MEETING 103.16 EARTH BACKFILL MATERIAL.
  - 333 102.9/108.2 - 4" SEWER SERVICE PIPE (SDR 35 PVC). INCLUDES TYPE A BEDDING AND HAUNCHING MATERIAL, BACKFILL OF TRENCH WITH NATIVE MATERIALS MEETING 103.16 EARTH BACKFILL MATERIAL.
  - 347 102.9/108.3 - 8" x 4" SEWER SERVICE TAP. FULL BODY WYE (SEE STD. DETAIL SS-06).
  - 358 103 - CLAY CUT-OFF WALL (INCIDENTAL TO SEWER INSTALLATION PAY ITEM)
  - 363 BYPASS PUMPING (AS DEEMED NECESSARY BY THE CITY OR CONTRACTOR)
  - 364 CONNECT TO EXISTING SEWER PIPE. THE CONTRACT PRICE FOR SEWER PIPE SHALL INCLUDE THE COST OF CONNECTION TO EXISTING PIPELINE.
  - 581 608.06 - CONCRETE DRAINAGE PAN (6' WIDE) (8" THICK MIN.)
  - 663 304 - AGGREGATE BASE COURSE (CLASS 6) (6" THICK)
  - 664 304 - AGGREGATE BASE COURSE (CLASS 6) (12" THICK)
  - 677 401.08 - HOT BITUMINOUS PAVEMENT (2" THICK) (GRADING SX, BINDER GRADE PG 64-22) (ONE 2" LIFTS)
  - 680 401.08 - HOT BITUMINOUS PAVEMENT (PATCHING) (2" THICK) (GRADING SX, BINDER GRADE PG 64-22, GYR = 75) (ONE 2" LIFT TOP MAT) (T-TOP PATCH) (SEE CITY STD. DETAIL GU-03)
  - 826 PROTECT EXISTING UTILITY LINE IN PLACE.

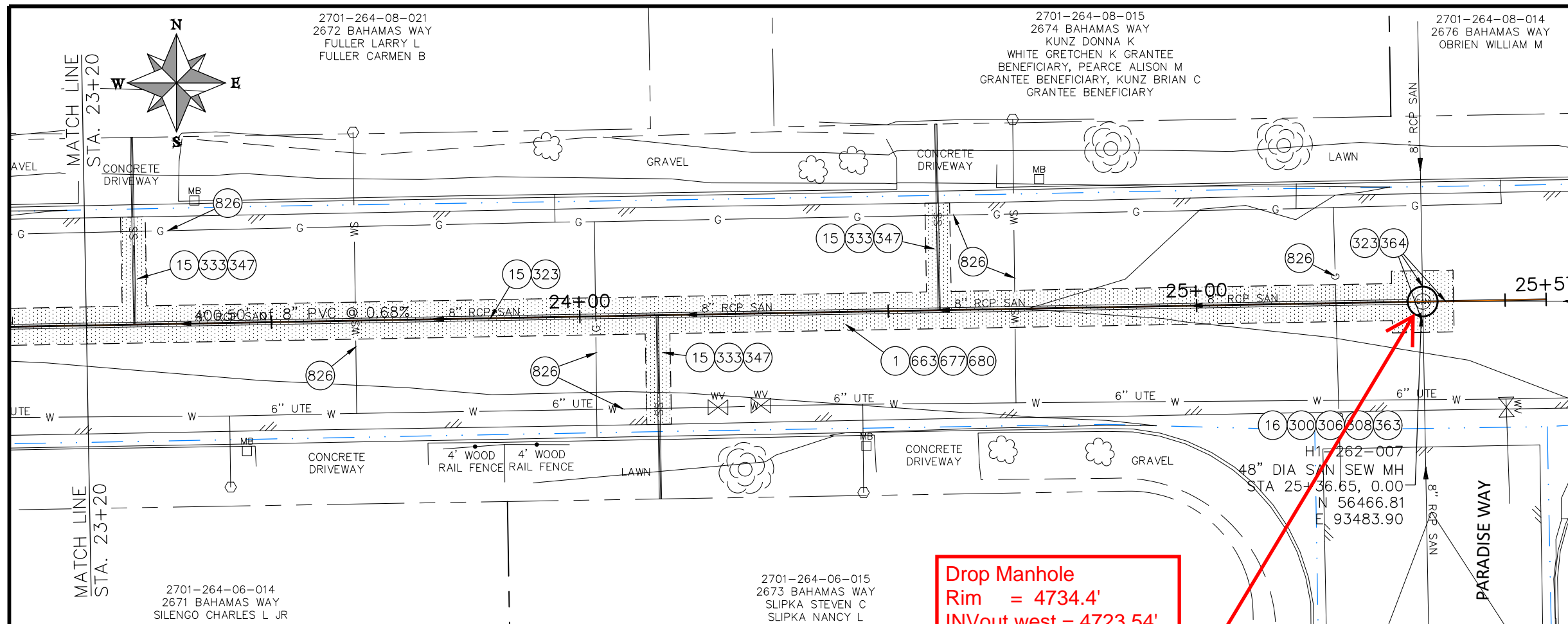


REVISION	DESCRIPTION	DATE	DRAWN BY	DATE
REVISION 1			D.J.M.	01/2024
REVISION 2			D.J.M.	01/2024
REVISION 3			I.T.	01/2024
REVISION 4			I.T.	01/2024

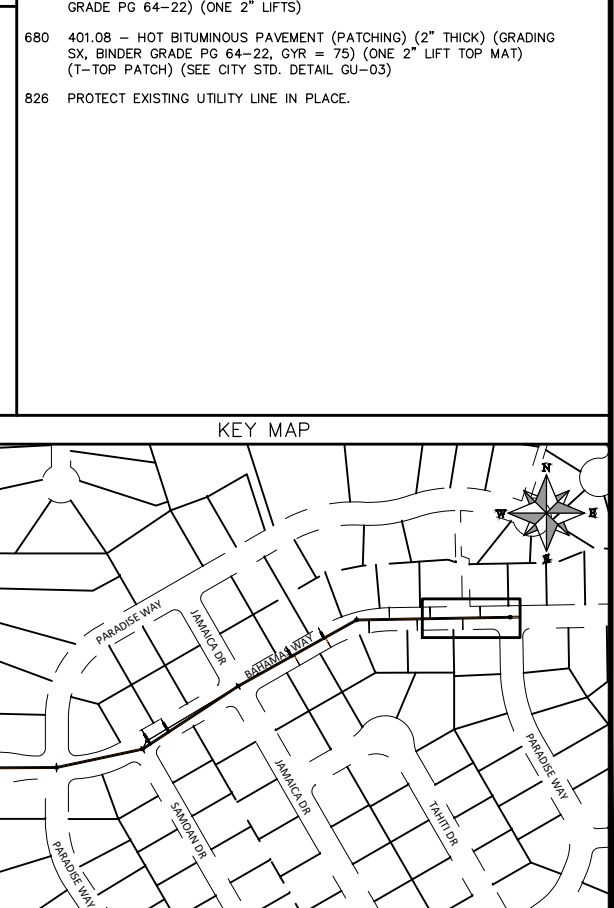
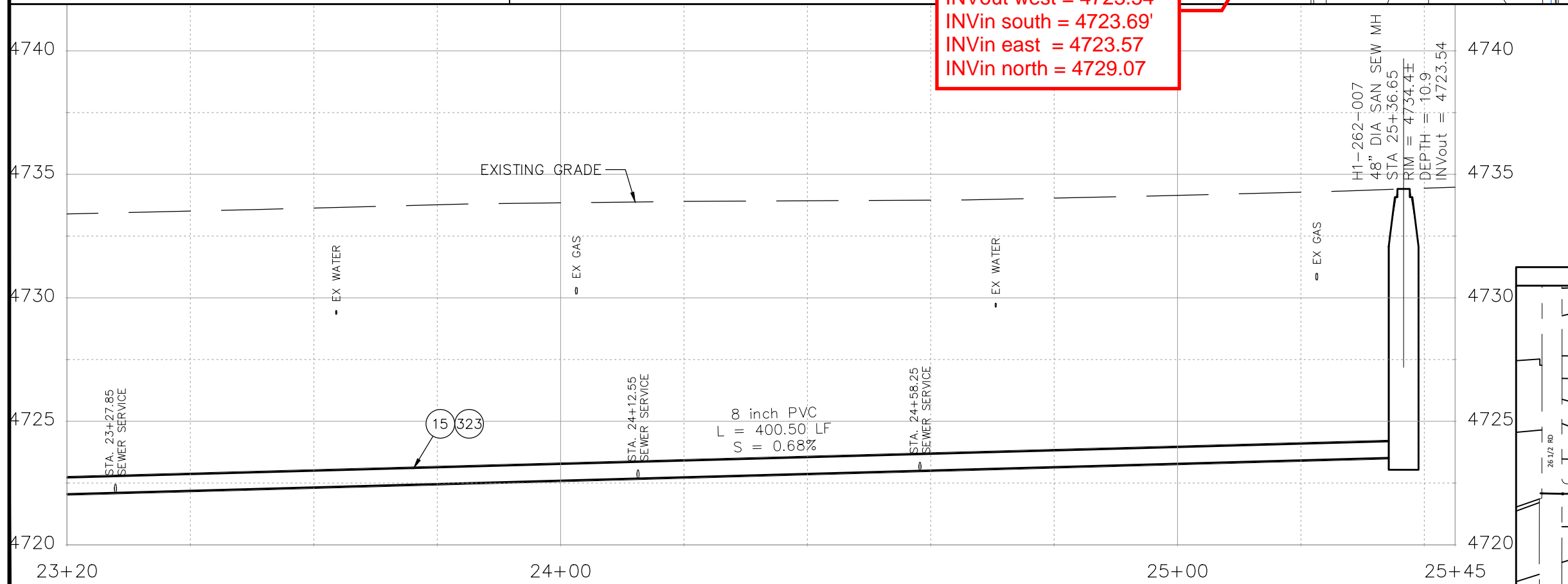
SCALES:  
 HORIZONTAL: 1" = 40'  
 VERTICAL: 1" = 10'

**PUBLIC WORKS  
ENGINEERING DIVISION**  
 PROJECT NO. F001642

**SEWER LINE REPLACEMENT - PARADISE HILLS**  
**UTILITY PLAN AND PROFILE - 6**  
 January 2, 2024



- CONSTRUCTION NOTES**
- 1 202 - REMOVAL OF ASPHALT MAT. CUT AND REMOVE ASPHALT AS SHOWN. (INDICATED BY DOT HATCH PATTERN)
  - 3 202 - REMOVAL OF CONCRETE. SAW CUT AND REMOVE CONCRETE AS SHOWN. (INDICATED BY CROSS HATCH PATTERN) INCLUDES BUT NOT LIMITED TO CURB, GUTTER, DRIVEWAY, SLABS, V-PAN, CURB RAMPS, INTERSECTION CORNERS, APRONS, AND LANDSCAPE BORDERS
  - 15 202 - REMOVAL OF PIPE AS SHOWN. (SIZE AND TYPE AS SHOWN ON PLAN)
  - 16 202 - REMOVAL OF MANHOLE. CONTRACTOR SHALL SALVAGE RING AND COVER AND DELIVER TO CITY SHOPS.
  - 17 202 - REMOVE MANHOLE CONE SECTION, RING, AND COVER. CONTRACTOR SHALL SALVAGE RING AND COVER AND DELIVER TO CITY SHOPS. CONTRACTOR SHALL FILL REMAINING BARREL SECTIONS WITH FLOW FILL MATERIAL.
  - 20 202 - ABANDON PIPE. ABANDON BY PLUGGING REMAINING ENDS WITH CONCRETE.
  - 300 102.11/108.5 - SANITARY SEWER BASIC MANHOLE (48" I.D.). INCLUDES CONNECTION OF ADJACENT SEWER LINE, FORMING INVERTS AND ADJUSTING TO FINAL GRADE. (SEE CITY OF GRAND JUNCTION STANDARD DETAIL SS-02).
  - 306 102.11/108.5 - MANHOLE BARREL SECTION (D>5) (48" I.D.).
  - 308 102.11/108.5 - MANHOLE INTERIOR CORROSION PROTECTION (CASTAGRA ECODUR 201 PROTECTIVE COATING OR APPROVED EQUAL) (PROTECTIVE COATING SHALL BE APPLIED TO PREPARED MANHOLE INVERT, BENCH, BARRELS, AND CONE SECTIONS. MANHOLE INVERTS AND BENCHES SHALL BE COATED PRIOR TO WASTEWATER INTRODUCTION)
  - 323 102.9/108.2 - 8" GRAVITY SEWER PIPE (SDR 35 PVC). INCLUDES TYPE A BEDDING AND HAUNCHING MATERIAL AND BACKFILL OF TRENCH WITH NATIVE MATERIALS MEETING 103.16 EARTH BACKFILL MATERIAL.
  - 333 102.9/108.2 - 4" SEWER SERVICE PIPE (SDR 35 PVC). INCLUDES TYPE A BEDDING AND HAUNCHING MATERIAL, BACKFILL OF TRENCH WITH NATIVE MATERIALS MEETING 103.16 EARTH BACKFILL MATERIAL.
  - 347 102.9/108.3 - 8" x 4" SEWER SERVICE TAP. FULL BODY WYE (SEE STD. DETAIL SS-06).
  - 358 103 - CLAY CUT-OFF WALL (INCIDENTAL TO SEWER INSTALLATION PAY ITEM)
  - 363 BYPASS PUMPING (AS DEEMED NECESSARY BY THE CITY OR CONTRACTOR)
  - 364 CONNECT TO EXISTING SEWER PIPE. THE CONTRACT PRICE FOR SEWER PIPE SHALL INCLUDE THE COST OF CONNECTION TO EXISTING PIPELINE.
  - 581 608.06 - CONCRETE DRAINAGE PAN (6' WIDE) (8" THICK MIN.)
  - 663 304 - AGGREGATE BASE COURSE (CLASS 6) (6" THICK)
  - 664 304 - AGGREGATE BASE COURSE (CLASS 6) (12" THICK)
  - 677 401.08 - HOT BITUMINOUS PAVEMENT (2" THICK) (GRADING SX, BINDER GRADE PG 64-22) (ONE 2" LIFTS)
  - 680 401.08 - HOT BITUMINOUS PAVEMENT (PATCHING) (2" THICK) (GRADING SX, BINDER GRADE PG 64-22, GYR = 75) (ONE 2" LIFT TOP MAT) (T-TOP PATCH) (SEE CITY STD. DETAIL GU-03)
  - 826 PROTECT EXISTING UTILITY LINE IN PLACE.



REVISION	DESCRIPTION	DATE	DRAWN BY	DATE
REVISION 1			D.J.M.	01/2024
REVISION 2			D.J.M.	01/2024
REVISION 3			I.I.	01/2024
REVISION 4			I.I.	01/2024



**PUBLIC WORKS  
ENGINEERING DIVISION**  
PROJECT NO. F001642

**SEWER LINE REPLACEMENT - PARADISE HILLS  
UTILITY PLAN AND PROFILE - 7**  
January 2, 2024

N:\EngProj\F001642 (Sewer Line Replace - Paradise Hills)\60CAD\DESIGN\SANITARY SEWER PLAN AND PROFILE F001642.dwg - PLOTTED 1/2/2024 3:11:46 PM