

DILLON-HUNT P.C.

ARCHITECTURE AND FACILITY MANAGEMENT

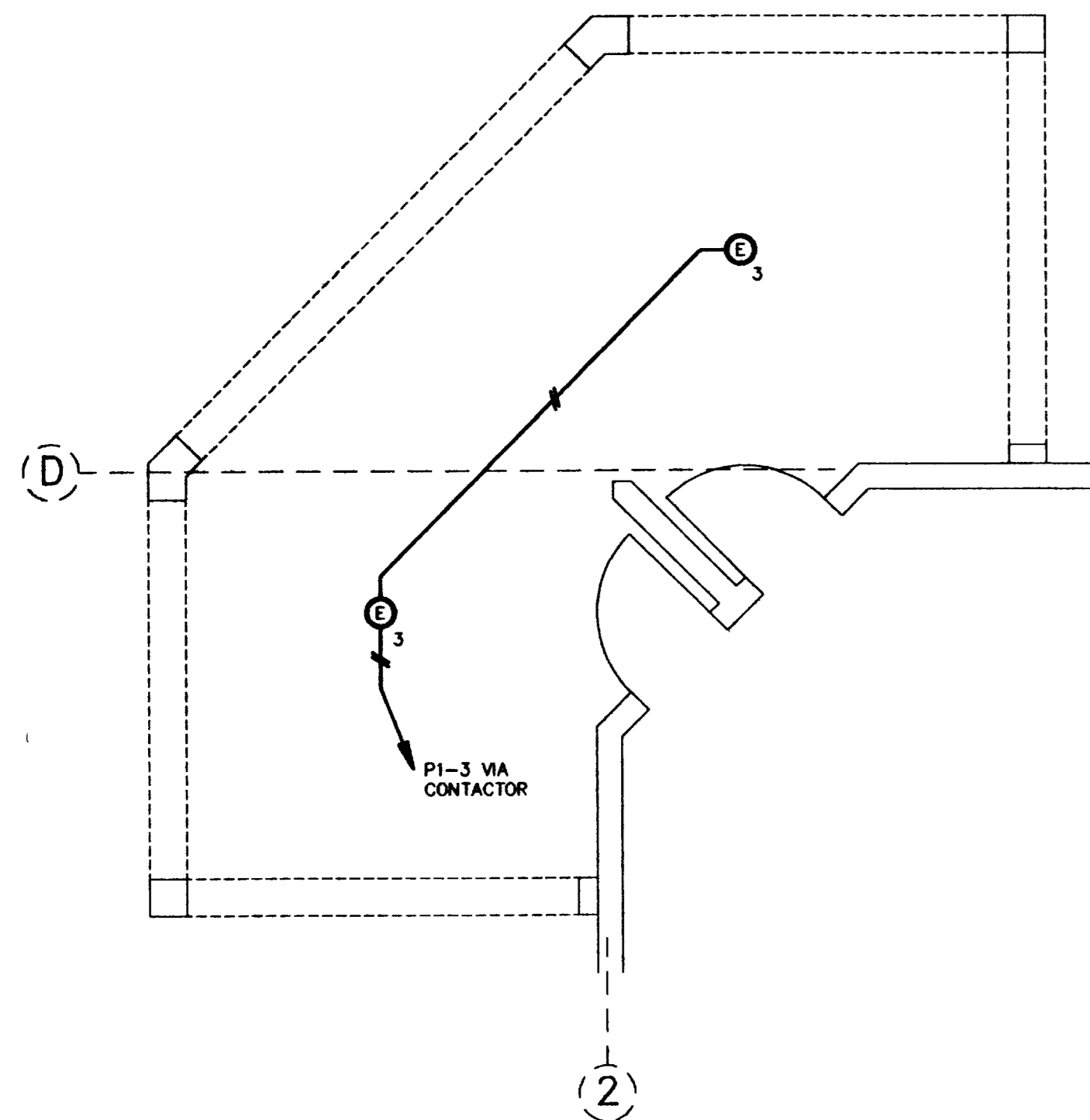
804 GRAND AVENUE
GRAND JUNCTION
CO 81501
(303) 245-7383
(303) 245-7437 (FA)

PROJECT PHASE
CD
APPROVED BY

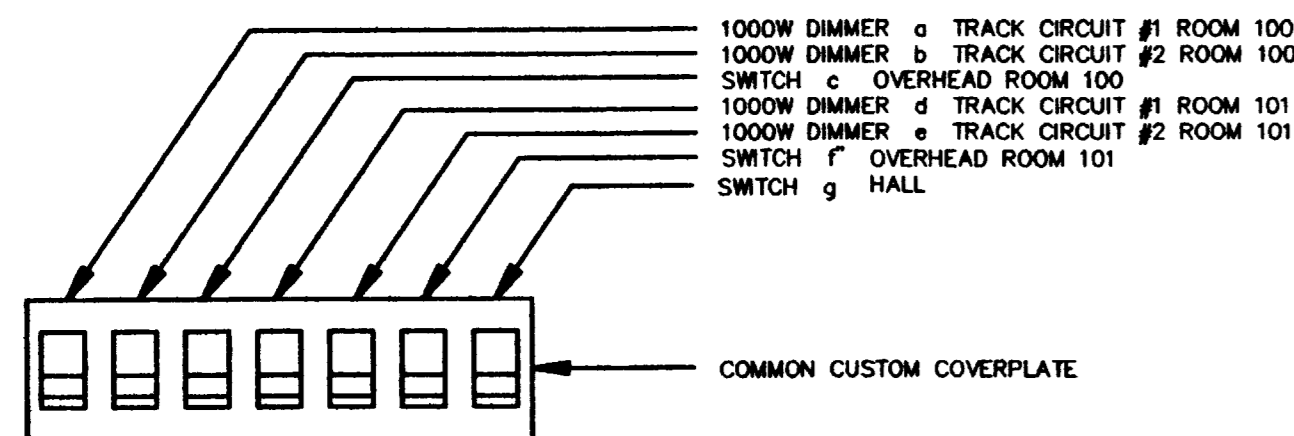
PROJECT NO. 920
DATE ISSUED: 7/2/
TIME ISSUED: RRJ
DRAWN BY: SCALE 1/4"=1'
SHEET SIZE:

VISITOR'S AND CONVENTION BUREAU
NEW VISITOR'S CENTER

SHEET NO
E2
OF 3



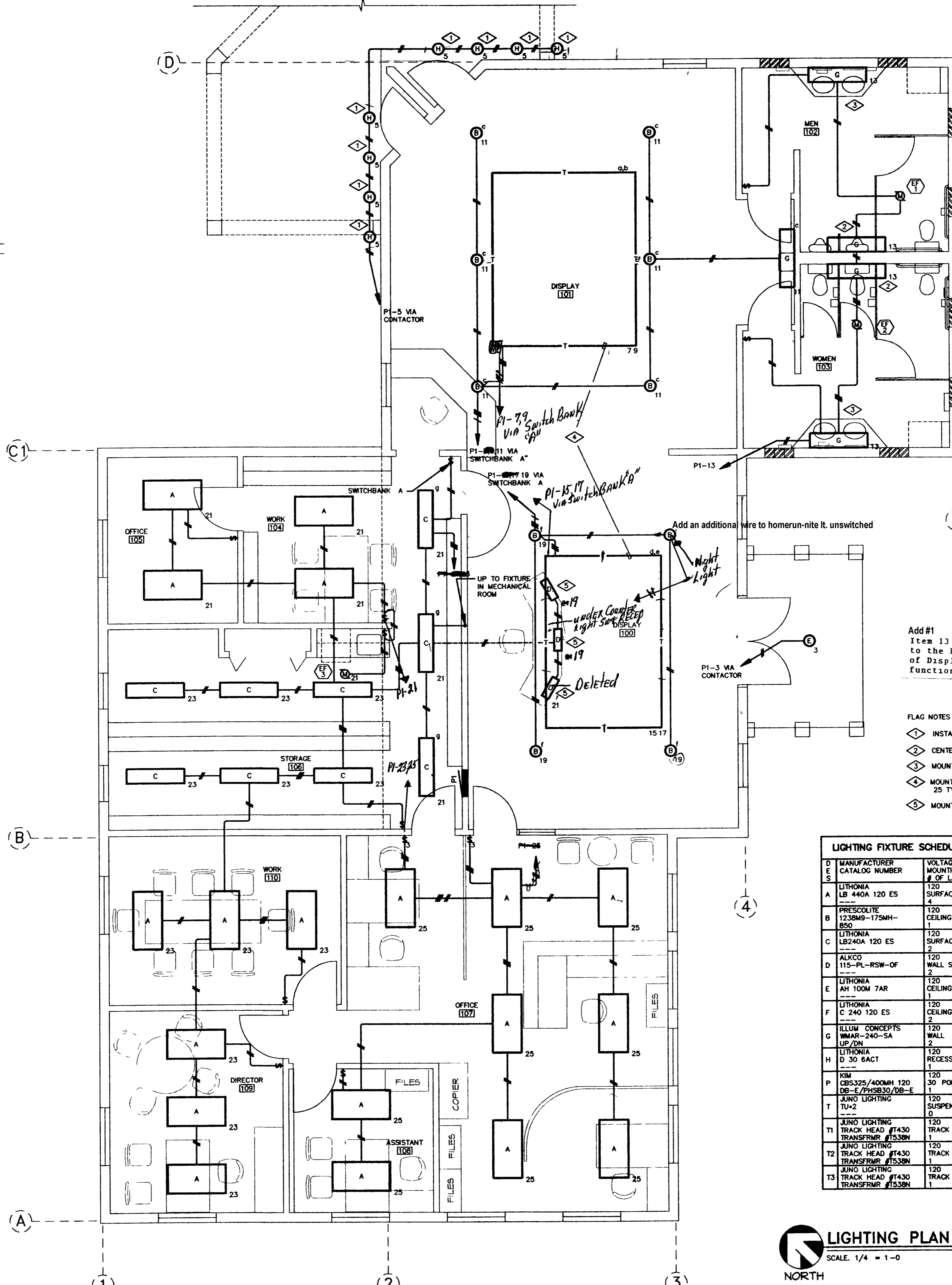
DECK LIGHTING PLAN
SCALE 1/4" = 1'-0"
ALTERNATE NO. 1
NORTH



SWITCHBANK "A"

NO SCALE

DIMMER RATINGS SHOWN ARE AFTER DERATING FOR MULTI-GANG INSTALLATION



ATTIC LIGHTING PLAN
SCALE 1/4" = 1'-0"
NORTH

ADD #1
Item 13 Drawing E2 Lighting Plan Add an additional wire to the home run from the Type B fixture in the north corner of Display Room 100. Use this wire to allow that fixture to function as a night-light (un-switched)

- FLAG NOTES
- ◇ INSTALL FIXTURES INDICATED IN HIGH SOFFIT TO LIGHT VISITOR CENTER SIGN
 - ◇ CENTER FIXTURES INDICATED IN SPACE BETWEEN THE TOP OF THE STALLS AND THE CEILING.
 - ◇ MOUNT FIXTURES INDICATED WITH BOTTOM OF FIXTURE AT THE TOP OF THE MIRROR
 - ◇ MOUNT TRACK AT 12" ABOVE FLOOR ON AIRCRAFT CABLE PROVIDE A TOTAL OF 25 TYPE T1 25 TYPE T2 AND 25 TYPE T3 HEADS DISTRIBUTE RANDOMLY ON TRACK
 - ◇ MOUNT TYPE D LIGHTING FIXTURES IN RECEPTION DESK BETWEEN UPPER AND LOWER COUNTERS.

LIGHTING FIXTURE SCHEDULE				
D E S	MANUFACTURER CATALOG NUMBER	VOLTAGE MOUNTING # OF LAMPS	BALLAST CATALOG NUMBER LAMP TYPE LAMP CATALOG NUMBER	DESCRIPTION
L	LITHONIA LB 440A 120 ES	120 SURFACE	446-L-SH-TC-P FLUORESCENT F40SP35	15-3/16" X 48" X 3" H SURFACE WRAPAROUND WITH ACRYLIC PRISMATIC LENS ENERGY EFFICIENT BALLASTS & 3500K LAMPS.
B	PRESCOLITE 1238MB-175MH-850	120 CEILING RECESS	120 METAL HALIDE M175/3K/BU-SYLVANIA	12 1/4" DIA X 17 1/8" H DOWNLIGHT WITH CLEAR ALZAK REFLECTOR 3000K LAMP
C	LITHONIA LB240A 120 ES	120 SURFACE	446-L-SH-TC-P FLUORESCENT F40SP35	10" W X 3" D X 48" L SURFACE MOUNTED WRAPAROUND WITH ACRYLIC PRISMATIC LENS 3500K LAMPS
D	ALCO 115-PL-RSW-OF	120 WALL SURFACE	STANDARD WITH FIXTURE F1381/SPX35	5 1/4" W X 18" L X 1 1/2" H UNDER CABINET WORK LIGHT WITH ACRYLIC LENS 3500K LAMPS, ROCKER SWITCH, AND OPAQUE FRONT
E	LITHONIA AH 100M 7AR	120 CEILING RECESS	120 METAL HALIDE MOR100/BU/BD	7 1/2" DIA X 10 7/8" H RECESSED DOWNLIGHT WITH SPECULAR CLEAR ALZAK REFLECTOR
F	LITHONIA C 240 120 ES	120 CEILING SURF.	446-L-SH-TC-P FLUORESCENT F40SP35	4 3/16" W X 48" L X 3 3/4" H STRIP WITH ENERGY EFFICIENT BALLAST AND A 3500K LAMP
G	ILLUM CONCEPTS WMAR-240-SA	120 WALL	446-L-SH-TC-P FLUORESCENT F40SP35	5 3/4" W X 48" L X 6" H COMB DIR/INDR WALL BRACKET W/ALUM CROSS LOUVER 3500K LAMPS & ENERGY BALLAST. COLOR SELECT BY ARCH
H	LITHONIA D 30 6ACT	120 RECESSED	NONE INCANDESCENT 75PAR30/CAP/FL (SYLV)	8" DIA X 9" H ADJUSTABLE DOWNLIGHT WITH SEMI-SPECULAR CLEAR ALZAK REFLECTOR AND DAMP LOCATION LABEL
P	KIM CBS325/400MH 120 DB-E/PHSB30/DB-E	120 POLE	STANDARD WITH FIXTURE METAL HALIDE MVR400/U	25" DIA BRONZE PAINTED CUT-OFF W/TYPE 3 DISTRIBUTION ON ROUND TAPERED BRONZE PAINTED STEEL POLE
T	JUNO LIGHTING TU+2	120 SUSPENDED	NONE INCANDESCENT	2"-CIRCUIT WHITE PAINTED TRACK SEE PLANS FOR LENGTH OF TRACK AND QUANTITY OF HEADS AIRCRAFT CABLE SUSPENSION
T1	JUNO LIGHTING TRACK HEAD #T430 TRANSFORMER #T538N	120 TRACK	NONE INCANDESCENT Q50MR16/FL/C 40#	2 1/2" L X 2 1/2" W X 5 1/2" H WHITE LOW VOLTAGE HEAD W/TRANSFORMER SEE PLANS FOR # OF HEADS CONSTANT COLOR LAMP
T2	JUNO LIGHTING TRACK HEAD #T430 TRANSFORMER #T538N	120 TRACK	NONE INCANDESCENT Q50MR16/NFL/C 25#	2 1/2" L X 2 1/2" W X 5 1/2" H WHITE LOW VOLTAGE HEAD W/TRANSFORMER SEE PLANS FOR # OF HEADS CONSTANT COLOR LAMP
T3	JUNO LIGHTING TRACK HEAD #T430 TRANSFORMER #T538N	120 TRACK	NONE INCANDESCENT Q50MR16/NSP/C 15#	2 1/2" L X 2 1/2" W X 5 1/2" H WHITE LOW VOLTAGE HEAD W/TRANSFORMER SEE PLANS FOR # OF HEADS CONSTANT COLOR LAMP

LIGHTING PLAN
SCALE 1/4" = 1'-0"
NORTH

09101021.tif

ELECTRICAL LEGEND

<p>SWITCHES: MH = 3'-10" TO CENTER</p> <p>○ SINGLE POLE SWITCH b = SWITCH DESIGNATION SEE DEVICE SCHEDULE FOR SPECIFICATION</p> <p>○ TWO POLE SWITCH</p> <p>○ THREE WAY SWITCH</p> <p>○ FOUR WAY SWITCH</p> <p>○ SINGLE PUSHBUTTON STATION</p> <p>○ SINGLE PUSHBUTTON STATION</p> <p>← EXTERIOR MOTION SWITCH</p> <p>LIGHTING FIXTURES:</p> <p>b FLUORESCENT - LENSED 1 = CIRCUIT DESIGNATION b = SWITCH DESIGNATION HALF SHADED = EMERGENCY</p> <p>○ FLUORESCENT - OPEN</p> <p>○ CEILING MOUNTED</p> <p>○ WALL BRACKET</p> <p>○ POLE MOUNTED - SINGLE</p> <p>○ POLE MOUNTED - DOUBLE</p> <p>○ TRACK</p> <p>○ EMERGENCY BATTERY UNIT</p>	<p>GENERAL SYMBOLS:</p> <p>AC 1 EQUIPMENT AC-1 = DESIGNATION - SEE SCHEDULE</p> <p>△ FLAG NOTE</p> <p>△ REVISION</p> <p>△ ROOM NUMBER</p> <p>△ SECTION MARK A = SECTION DESIGNATION E1 = REFERENCE DRAWING</p> <p>ABBREVIATIONS:</p> <p>A AMPERES</p> <p>AFB ABOVE FINISHED FLOOR</p> <p>AFG ABOVE FINISHED GRADE</p> <p>BC BELOW CEILING</p> <p>BKR BREAKER</p> <p>C CEILING</p> <p>DD DUSK TO DAWN</p> <p>DTO DUSK TO TIMED OFF</p> <p>EM SWITCHED EMERGENCY</p> <p>EMT ELECTRICAL METALLIC TUBING</p> <p>EN NON-SWITCHED EMERGENCY</p> <p>EX EXISTING</p> <p>G GROUND FAULT CURRENT INTERRUPTER</p> <p>GRC GALVANIZED RIGID CONDUIT</p> <p>GRD GROUND</p> <p>IG ISOLATED GROUND</p> <p>J JUNCTION BOX</p> <p>K KEY OPERATED SWITCH</p> <p>L SWITCH WITH PILOT LIGHT</p> <p>LA LIGHTING ARRESTOR</p> <p>NOT IN CONTRACT</p> <p>NL NIGHT LIGHT</p> <p>NTS NOT TO SCALE</p> <p>O OCCUPANCY SENSING SWITCH</p> <p>PVC POLYVINYL CHLORIDE</p> <p>R MOTOR RATED SWITCH</p> <p>W WEATHERPROOF</p> <p>WG WEATHERPROOF/GFC</p>
----------------------------------------------------------------------------------------------------------------------------------------------------------------------------------------------------------------------------------------------------------------------------------------------------------------------------------------------------------------------------------------------------------------------------------------------------------------------------------------------------------------------------------------------------------------------------------------------------------------------------------------------------------------------------	----------------------------------------------------------------------------------------------------------------------------------------------------------------------------------------------------------------------------------------------------------------------------------------------------------------------------------------------------------------------------------------------------------------------------------------------------------------------------------------------------------------------------------------------------------------------------------------------------------------------------------------------------------------------------------------------------------------------------------------------------------------------------------------------------------------------------------------------------------------------------------------------------------------------------------------------------------------------------------------------------------------------------------------------------

GENERAL LIGHTING NOTES:

PROVIDE A SEPARATE GREEN INSULATED GROUND WIRE SIZED PER NATIONAL ELECTRICAL CODE TABLE 250.122 IN ALL BRANCH CIRCUIT AND FEEDER RACEWAYS CONTAINING POWER CONDUCTORS. GROUND WIRE IS NOT INCLUDED IN HACHURE COUNT ON DRAWINGS.

REVIEW ARCHITECTURAL REFLECTED CEILING PLANS PRIOR TO INSTALLATION OF LIGHT FIXTURES. CALL ANY DISCREPANCIES TO THE ATTENTION OF THE ENGINEER.

FIXTURE MOUNTING HEIGHTS SHOWN ON THE PLANS TAKE PRECEDENCE OVER DEFAULT MOUNTING HEIGHTS SHOWN IN THE LEGEND.

REVIEW DOOR SWINGS ON ARCHITECTURAL PLANS PRIOR TO SWITCH ROUGH-IN. WHERE CONFLICT EXISTS BETWEEN THE ARCHITECTURAL PLANS AND THE ELECTRICAL PLANS, THE ARCHITECTURAL PLANS TAKE PRECEDENCE. RELOCATE ANY SWITCHES WHICH WOULD FALL ON THE HINGE SIDE OF DOORS.

PROVIDE AN UNSWITCHED CONDUCTOR TO ALL BATTERY BACKED EMERGENCY FIXTURES FOR CHARGING AND TRANSFER. EMERGENCY FIXTURES WITH A SWITCH DESIGNATION SHALL BE SWITCHED. EMERGENCY FIXTURES WITH A NIGHT LIGHT DESIGNATION (NL) AND EXIT SIGNS SHALL BE ON CONSTANTLY. FIXTURES USED SOLELY FOR EMERGENCY EGRESS (PROG EYES) SHALL ILLUMINATE ONLY ON POWER FAILURE. ALL EMERGENCY FIXTURES SHALL ILLUMINATE DURING UTILITY POWER FAILURES.

ALL LIGHT SWITCHES ARE TO BE INSTALLED FLUSH UNLESS OTHERWISE INDICATED.

THE MOUNTING HEIGHT OF DIRECT OR DIRECT/INDIRECT WALL MOUNTED LIGHTING FIXTURES IS THE DISTANCE FROM THE FINISHED FLOOR TO THE BOTTOM OF THE LIGHTING FIXTURE DIFFUSER OR REFLECTOR. DETERMINE THE BOX HEIGHT FROM THE LIGHTING FIXTURE MOUNTING HEIGHT AND THE LIGHTING FIXTURE DIMENSIONS.

THE MOUNTING HEIGHT OF INDIRECT WALL MOUNTED LIGHTING FIXTURES IS THE DISTANCE FROM THE FINISHED FLOOR TO THE TOP OF THE LIGHTING FIXTURE DIFFUSER OR REFLECTOR. DETERMINE THE BOX HEIGHT FROM THE LIGHTING FIXTURE MOUNTING HEIGHT AND THE LIGHTING FIXTURE DIMENSIONS.

THE MOUNTING HEIGHT OF INDIRECT OR DIRECT/INDIRECT CORD, CHAIN, PENDANT, OR AIRCRAFT CABLE SUPPORTED LIGHTING FIXTURES IS THE DISTANCE FROM THE FINISHED FLOOR TO THE TOP OF THE LIGHTING FIXTURE DIFFUSER OR REFLECTOR. DETERMINE CORD, CHAIN, PENDANT, OR AIRCRAFT CABLE LENGTH FROM THE LIGHTING FIXTURE MOUNTING HEIGHT, LIGHTING FIXTURE DIMENSIONS, AND THE CEILING HEIGHT.

THE FOLLOWING MAIN KEY DEFINES LIGHTING FIXTURES AND CONTROLS IN THE ROOM LISTED. ALL DEVICES IN THIS SPACE ARE TO COMPLY WITH THIS MAIN KEY UNLESS OVERRIDDEN BY A TAG.

ROOM NAME - SWITCH MOUNTING FLUSH OR SURFACE HEIGHT

SWITCH DESIGNATION - SEE WIRING DEVICE SCHEDULE - LIGHT FIXTURE MOUNTING FLUSH OR SURFACE HEIGHT

FIXTURE DESIGNATION - SEE LIGHTING FIXTURE SCHEDULE - ROOM NUMBER

PANEL DESIGNATION - ROOM NUMBER

THE FOLLOWING TAG DEFINES LIGHTING FIXTURES AND CONTROLS WHICH ARE DIFFERENT FROM THOSE DEFINED IN THE MAIN KEY. THIS TAG OVERRIDES THE MAIN KEY FOR THE SWITCH OR LIGHTING FIXTURE INDICATED AND SIMILARLY SHAPED LIGHTING FIXTURES IN THIS SPACE.

SWITCH OR FIXTURE DESIGNATION - SEE SCHEDULE - SWITCH OR FIXTURE MOUNTING FLUSH OR SURFACE HEIGHT

PANEL DESIGNATION - TYPICAL NUMBER OF THIS TYPE OF LIGHTING FIXTURE

SEE SPECIFICATIONS FOR ADDITIONAL CONSTRAINTS ON THE INSTALLATION OF THE LIGHTING SYSTEM.

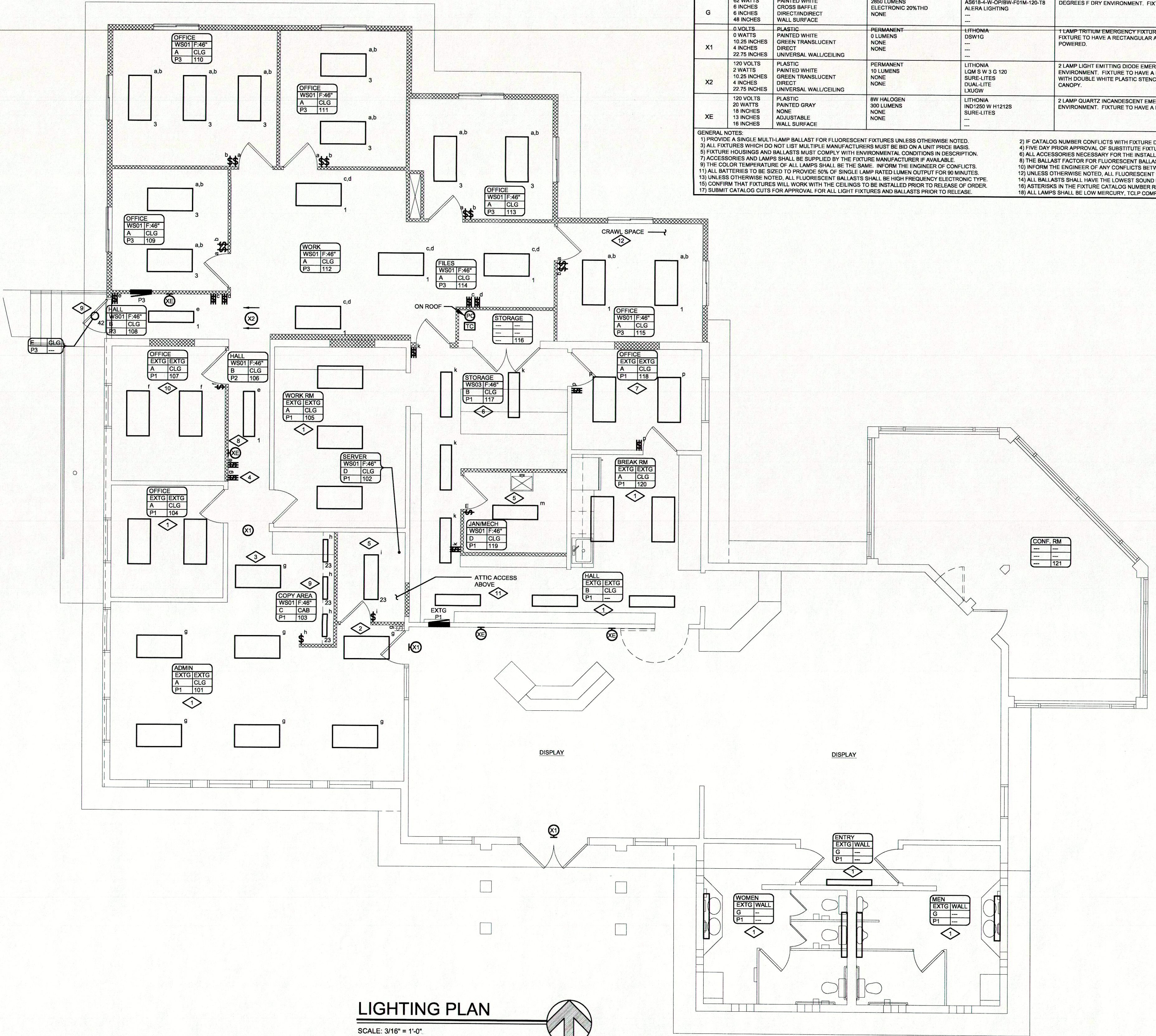
NOTES REFERENCED ON THE PLANS

- ◇ NEW LIGHTING FIXTURE(S) TO BE INSTALLED IN SAME LOCATION AS OLD LIGHTING FIXTURE(S). CIRCUITING AND SWITCHING TO REMAIN THE SAME.
- ◇ NEW LIGHTING FIXTURE TO BE INSTALLED 1'-0" TO EAST OF WHERE OLD LIGHTING FIXTURE WAS PATCH HOLE IN CEILING. CIRCUITING AND SWITCHING TO REMAIN THE SAME.
- ◇ NEW LIGHTING FIXTURE ADDED. EXTEND EXISTING CIRCUIT IN ADMINISTRATION AREA TO NEW FIXTURE. SWITCH WITH OTHER LIGHTING FIXTURES IN ADMINISTRATION AREA.
- ◇ NEW LOCATION FOR 3-WAY SWITCH FOR ADMINISTRATION LIGHTING FIXTURES. REVISE SWITCHING AS SHOWN. CIRCUITING TO REMAIN THE SAME.
- ◇ REUSE EXISTING LIGHTING CIRCUIT THAT SERVES THIS AREA.
- ◇ STORAGE ROOM HAS BEEN RECONFIGURED. ADD 3-WAY SWITCHES AS SHOWN. CIRCUITING TO REMAIN THE SAME.
- ◇ DOOR ADDED TO OFFICE. ADD 3-WAY SWITCHES AS SHOWN. CIRCUITING TO REMAIN THE SAME.
- ◇ NEW LIGHTING FIXTURE TO BE INSTALLED OVER EXISTING HOLE IN CEILING. REVISE CIRCUITING AND SWITCHING AS SHOWN ON PLAN.
- ◇ EXTEND EXISTING ADMINISTRATION LIGHTING CIRCUIT TO NEW CABINET LIGHTS.
- ◇ NEW LIGHTING FIXTURE(S) TO BE INSTALLED IN SAME LOCATION AS OLD LIGHTING FIXTURE(S). CIRCUITING TO REMAIN THE SAME. REVISE SWITCHING AS SHOWN ON PLAN.
- ◇ PROVIDE A TYPE "D" LIGHT IN THE ATTIC. PROVIDE 4 HOUR TORK TIMER SWITCH BY ATTIC DOOR (WITHOUT HOLD). PROVIDE A DUPLEX RECEPTACLE NEXT TO SWITCH. WIRE TO SPARE BREAKER IN PANEL A.
- ◇ PROVIDE A TYPE "D" LIGHT IN THE CRAWL SPACE NEAR MECHANICAL EQUIPMENT. PROVIDE A TORK TIMER BY CRAWL SPACE DOOR (WITHOUT HOLD). PROVIDE A DUPLEX RECEPTACLE NEXT TO SWITCH. WIRE TO P3-5.

DESIGNATION	VOLTAGE WATTS HEIGHT FINISH LAMP ARANG LENGTH	HOUSING MATERIAL FINISH DIFFUSER/REFLECTOR LAMP MOUNTING FIXTURE MOUNTING	LAMP DESCRIPTION LAMP LUMENS FIRST BALLAST SECOND BALLAST	MANUFACTURER CATALOG NUMBER OTHER APPROVED MANUFACTURERS	FIXTURE DESCRIPTION
A	120 VOLTS 62 WATTS 5.25 INCHES 24 INCHES 48 INCHES	STEEL PAINTED WHITE WHITE TRANSLUCENT DIRECT CEILING SURFACE	F3278XL/SPX35H/ECO 2800 LUMENS ELECTRONIC 20K/THD NONE	PRUDENTIAL P1124-278-SWA-YGW-DC-120- SUR-RISE HUBBELL, INC	3 LAMP RAPID START FLUORESCENT DECORATIVE/ARCHITECTURAL FIXTURE TO BE USED IN A 60° F DRY ENVIRONMENT. FIXTURE TO HAVE A RECTANGULAR APERTURE AND TWO BALLASTS FOR MULTI LEVEL SWITCHING. FIXTURE TO BE "CLOUD" TYPE WITH ROUNDED EDGES.
B	120 VOLTS 62 WATTS 5.25 INCHES 24 INCHES 48 INCHES	STEEL PAINTED WHITE WHITE TRANSLUCENT DIRECT CEILING SURFACE	F3278XL/SPX35H/ECO 2800 LUMENS ELECTRONIC 20K/THD NONE	PRUDENTIAL P1114-278-SWA-YGW-SC-120- SUR-RISE HUBBELL, INC OR 5 DAY PRIOR APPROVAL	2 LAMP RAPID START FLUORESCENT DECORATIVE/ARCHITECTURAL FIXTURE TO BE USED IN A 60 DEGREES F DRY ENVIRONMENT. FIXTURE TO HAVE A RECTANGULAR APERTURE. FIXTURE TO BE "CLOUD" TYPE WITH ROUNDED EDGES.
C	120 VOLTS 20 WATTS 1.125 INCHES 5 INCHES 24.5 INCHES	STEEL PAINTED WHITE WHITE TRANSLUCENT DIRECT UNDER CABINET	F875COW 400 LUMENS ELECTRONIC 20K/THD NONE	ALKCO HP180CF --- NALITE OR 5 DAY PRIOR APPROVAL	2 LAMP RAPID START FLUORESCENT ACCENT FIXTURE TO BE USED IN A 60 DEGREES F DRY ENVIRONMENT. FIXTURE TO HAVE A RECTANGULAR APERTURE. UNDER CABINET FIXTURE WITH OPAGUE FRONT LENS.
D	120 VOLTS 105 WATTS 3 INCHES 12 INCHES 48 INCHES	STEEL PAINTED WHITE ACRYLIC PRISMATIC DIRECT CEILING SURFACE	F3278XL/SPX35H/ECO 2800 LUMENS ELECTRONIC 20K/THD NONE	LITHONIA LB 3 32 120 GEB --- HUBBELL, INC OR 5 DAY PRIOR APPROVAL	3 LAMP RAPID START FLUORESCENT WRAPAROUND FIXTURE TO BE USED IN A 60 DEGREES F DRY ENVIRONMENT. FIXTURE TO HAVE A RECTANGULAR APERTURE.
E	120 VOLTS 62 WATTS 6.1 INCHES 8 INCHES 18 INCHES	STEEL PAINTED WHITE ACRYLIC PRISMATIC DIRECT CEILING RECESSED	F268X/SPX36 - SYLVANIA 1700 LUMENS ELECTRONIC 10K/THD ---	LITHONIA (GOTHAM) AF 22821T BAR A12 120 GEB10 SUR HUBBELL, INC OR 5 DAY PRIOR APPROVAL	2 LAMP COMPACT FLUORESCENT DOWNLIGHT FIXTURE TO BE USED IN A 4" DAMP ENVIRONMENT. FIXTURE TO HAVE A 8" ROUND APERTURE. PRISMATIC LENS AND WHITE SLAYED TRM AND REMOTE BATTERY PACK.
F	120 VOLTS 62 WATTS 6 INCHES 8 INCHES 18 INCHES	STEEL PAINTED BRONZE FLUOROCARBON DIRECT/INDIRECT GROUND	50 W MEDIUM BASE COATED 8000 LUMENS ENCASED AND POTTED ---	LITHONIA KBE8 50M RS *** KM JPL LIGHTING OR 5 DAY PRIOR APPROVAL	1 LAMP METAL HALIDE BOLLARD FIXTURE TO BE USED IN A 30 DEGREES F WET ENVIRONMENT. FIXTURE TO HAVE A SQUARE APERTURE. PROVIDE ANCHOR BOLTS, IF SQUARE.
G	120 VOLTS 62 WATTS 8 INCHES 6 INCHES 48 INCHES	STEEL PAINTED WHITE CROSS HATCH DIRECT/INDIRECT WALL SURFACE	32W T8 3600 DEG K 78 CRI 2800 LUMENS ELECTRONIC 20K/THD NONE	LITHONIA IND 250 W H 121S SURE-LITES ---	2 LAMP RAPID START FLUORESCENT WALL BRACKET/SCENE FIXTURE TO BE USED IN A 60 DEGREES F DRY ENVIRONMENT. FIXTURE TO HAVE A SQUARE APERTURE.
X1	0 VOLTS 0 WATTS 10.25 INCHES 4 INCHES 22.75 INCHES	PLASTIC PAINTED WHITE GREEN TRANSLUCENT DIRECT UNIVERSAL WALL/CEILING	PERMANENT 0 LUMENS NONE ---	LITHONIA R91YG ---	1 LAMP TRITUM EMERGENCY FIXTURE TO BE USED IN A 60 DEGREES F DRY ENVIRONMENT. FIXTURE TO HAVE A RECTANGULAR APERTURE. NON BATTERY BACKED 10 YEAR NUCLEAR NON POWERED.
X2	120 VOLTS 2 WATTS 10.25 INCHES 4 INCHES 22.75 INCHES	PLASTIC PAINTED WHITE GREEN TRANSLUCENT DIRECT UNIVERSAL WALL/CEILING	PERMANENT 10 LUMENS NONE ---	LITHONIA LOW S W 3 120 SURE-LITES DUAL-LIFE LXJ0W	2 LAMP LIGHT EMITTING DIODE EMERGENCY FIXTURE TO BE USED IN A 60 DEGREES F DRY ENVIRONMENT. FIXTURE TO HAVE A RECTANGULAR APERTURE. NON-BATTERY BACKED LED EXIT WITH DOUBLE WHITE PLASTIC STENCIL FACE, GREEN LETTERS, AND UNIVERSAL MOUNTING CANOPY.
XE	120 VOLTS 20 WATTS 18 INCHES 13 INCHES 18 INCHES	PLASTIC PAINTED GRAY NONE ADJUSTABLE WALL SURFACE	8W HALOGEN 800 LUMENS NONE ---	LITHONIA IND 250 W H 121S SURE-LITES ---	2 LAMP QUARTZ INCANDESCENT EMERGENCY FIXTURE TO BE USED IN A 60 DEGREES F DRY ENVIRONMENT. FIXTURE TO HAVE A ROUND APERTURE. LEAD CALCIUM BATTERY BACKED.

GENERAL NOTES:

- 1) PROVIDE A SINGLE LAMP BALLAST FOR FLUORESCENT FIXTURES UNLESS OTHERWISE NOTED.
- 2) IF CATALOG NUMBER CONFLICTS WITH FIXTURE DESCRIPTION, THEN DESCRIPTION TAKES PRECEDENCE.
- 3) ALL FIXTURES WHICH DO NOT LIST MULTIPLE MANUFACTURERS MUST BE BID ON A UNIT PRICE BASIS.
- 4) FIVE DAY PRIOR APPROVAL OF SUBSTITUTE FIXTURES IS REQUIRED FOR MANUFACTURERS NOT LISTED.
- 5) FIXTURE HOURS AND BALLASTS MUST COMPLY WITH ENVIRONMENTAL CONDITIONS IN DESCRIPTION.
- 6) ALL ACCESSORIES NECESSARY FOR THE INSTALLATION OF THE FIXTURES SHALL BE SUPPLIED.
- 7) ACCESSORIES AND LAMPS SHALL BE SUPPLIED BY THE FIXTURE MANUFACTURER IF AVAILABLE.
- 8) THE BALLAST FACTOR FOR FLUORESCENT BALLASTS SHALL BE THE CLOSEST TO UNITY IF AVAILABLE.
- 9) THE COLOR TEMPERATURE OF ALL LAMPS SHALL BE THE SAME. INFORM THE ENGINEER OF CONFLICTS.
- 10) UNLESS OTHERWISE NOTED, ALL FLUORESCENT BALLASTS SHALL BE HIGH FREQUENCY ELECTRONIC TYPE.
- 11) ALL BATTERIES TO BE SIZED TO PROVIDE 90% OF SINGLE LAMP RATED LUMEN OUTPUT FOR 90 MINUTES.
- 12) UNLESS OTHERWISE NOTED, ALL FLUORESCENT BALLASTS SHALL BE HIGH FREQUENCY ELECTRONIC TYPE.
- 13) UNLESS OTHERWISE NOTED, ALL FLUORESCENT BALLASTS SHALL BE HIGH FREQUENCY ELECTRONIC TYPE.
- 14) UNLESS OTHERWISE NOTED, ALL FLUORESCENT BALLASTS SHALL BE HIGH FREQUENCY ELECTRONIC TYPE.
- 15) UNLESS OTHERWISE NOTED, ALL FLUORESCENT BALLASTS SHALL BE HIGH FREQUENCY ELECTRONIC TYPE.
- 16) UNLESS OTHERWISE NOTED, ALL FLUORESCENT BALLASTS SHALL BE HIGH FREQUENCY ELECTRONIC TYPE.
- 17) SUBMIT CATALOG CUTS FOR APPROVAL FOR ALL LIGHT FIXTURES AND BALLASTS PRIOR TO RELEASE.
- 18) ALL BALLASTS SHALL HAVE THE LOWEST SOUND RATING AVAILABLE.
- 19) ALL BALLASTS SHALL HAVE THE LOWEST SOUND RATING AVAILABLE.
- 20) ALL BALLASTS SHALL HAVE THE LOWEST SOUND RATING AVAILABLE.
- 21) ALL BALLASTS SHALL HAVE THE LOWEST SOUND RATING AVAILABLE.
- 22) ALL BALLASTS SHALL HAVE THE LOWEST SOUND RATING AVAILABLE.
- 23) ALL BALLASTS SHALL HAVE THE LOWEST SOUND RATING AVAILABLE.
- 24) ALL BALLASTS SHALL HAVE THE LOWEST SOUND RATING AVAILABLE.
- 25) ALL BALLASTS SHALL HAVE THE LOWEST SOUND RATING AVAILABLE.
- 26) ALL BALLASTS SHALL HAVE THE LOWEST SOUND RATING AVAILABLE.
- 27) ALL BALLASTS SHALL HAVE THE LOWEST SOUND RATING AVAILABLE.
- 28) ALL BALLASTS SHALL HAVE THE LOWEST SOUND RATING AVAILABLE.
- 29) ALL BALLASTS SHALL HAVE THE LOWEST SOUND RATING AVAILABLE.
- 30) ALL BALLASTS SHALL HAVE THE LOWEST SOUND RATING AVAILABLE.



LIGHTING PLAN
SCALE: 3/16" = 1'-0"
NORTH

Revision/Date

GS ROBSON - ARCHITECTURE, INC.

529 25 1/2 Road, Suite B109, Grand Junction, Colorado 81505
970.257.7600 • 970.257.1031 (fax) • architect@gsr-architect.com

VISITORS CENTER
740 HORIZON DRIVE & I-70
GRAND JUNCTION, CO

issue date:
09/05/06

drawing: 6013EL01

E3
OF 5