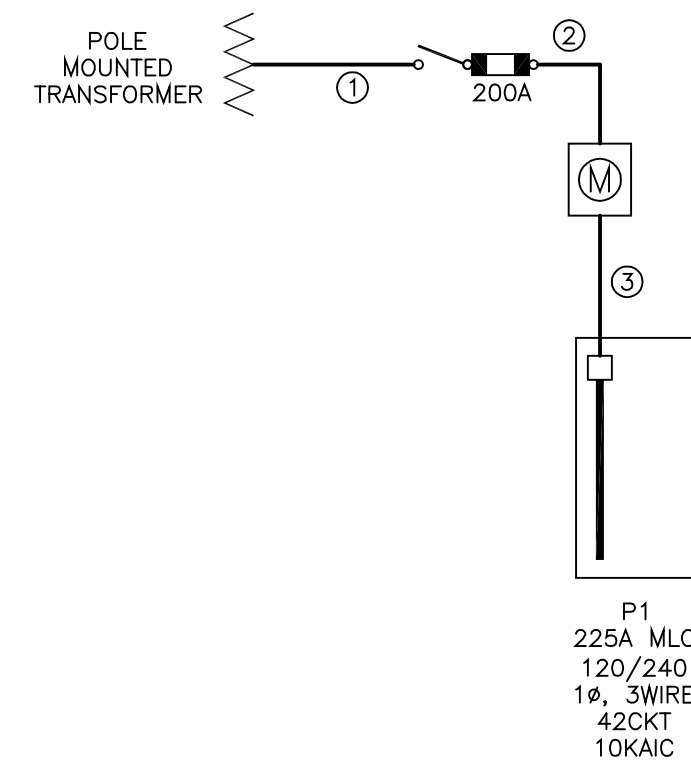


DRAWING GENERAL NOTES:
 1. CONDUCTORS IN EXPOSED AREAS SHALL BE RACEWAY, CONCEALED CONDUCTORS MAY BE ROMEX.



- CABLE LEGEND**
- ① 2-1/2" PVC, 3#4/0 (XHHW,CU)
 - ② 2-1/2" EMT, 3#4/0 (THHN,CU) 1#6 CU G
 - ③ 2-1/2" PVC, 3#4/0 (XHHW,CU) 1#6 CU G

- ONE-LINE DIAGRAM NOTES:**
1. SERVICE CONDUCTOR SIZE AND TYPE SHALL COMPLY WITH UTILITY REQUIREMENTS.
 2. GROUND TO WATER MAIN AND BUILDING STEEL USING #4.
 3. GROUND TO UFER USING #4.
 4. GROUND TO GROUND ROD USING #6.
 5. PANEL LABELS SHALL BE RIVETED OR SCREWED TO THE PANEL.

ONE LINE DIAGRAM
NO SCALE

MECHANICAL EQUIPMENT SCHEDULE

UNIT NO	FUNCTION (NOTES)	LOAD	VOLTS	Ø	FULL LOAD AMPS	BRANCH CONDUIT	CIRCUIT NO.	SIZE	BRKR SIZE	START	DISC FUSE
CD 1	CONDENSING UNIT #1	8.6KVA	240	1	36	1/2	2	8	40	NOTE 1	
EF 1	EXHAUST FAN #1	301W	120	1	2.5	1/2	2	12	15	NOTE 2,3	
IR 1	RADIANT HEATER #1	270W	120	1	2.25	1/2	2	12	15	NOTE 2	
F 1	FURNACE #1	3/4	120	1	13.8	1/2	2	12	20	NOTE 1,2	
WH 1	WATER HEATER #1	1440W	120	1	1.26	1/2	2	12	15	NOTE 2	
HD 1	HAND DRYER #1	2300W	120	1	20.0	1/2	2	10	20	NOTE 4	
HD 2	HAND DRYER #2	2300W	120	1	20.0	1/2	2	10	20	NOTE 4	
GD 1	GARAGE DOOR OPERATOR	1/2	120	1	9.8	1/2	2	12	20	NOTE 4	

MECHANICAL EQUIPMENT SCHEDULE NOTES:

1. ACTUAL OVERCURRENT PROTECTION UNKNOWN AT THE TIME OF DESIGN, COORDINATE EXACT REQUIREMENTS WITH MECHANICAL CONTRACTOR PRIOR TO ORDERING ANY EQUIPMENT.
2. INSTALL PER MANUFACTURER'S REQUIREMENTS.
3. CIRCUITED WITH LIGHTING IN THE SAME SPACE.
4. OR AS REQUIRED BY MANUFACTURER.

PANEL LD

ELECTRICAL LOAD TABLE

LOAD TYPE	CONNECTED KW ADDED
GENERAL LIGHTING (NEC)	11.1
RECEPTACLES	8.9
KITCHEN EQUIPMENT	3.0
MECHANICAL EQUIPMENT	11.1
LARGEST MOTOR	0.4
MISC EQUIPMENT	6.5
TOTAL KVA	41
FUTURE	10
TOTAL	51.1

LOAD TABLE NOTES:

1. LIGHTING LOADS BASED ON NEC TABLE 220.12 AND TABLE 220.42
2. KITCHEN LOADS BASED ON NEC TABLE 220.56
3. RECEPTACLE LOADS BASED ON NEC TABLE 220.44
4. DEMAND FACTORS APPLIED TO NONCOINCIDENT LOADS PER NEC 220.60

PANEL SCHEDULE: P1

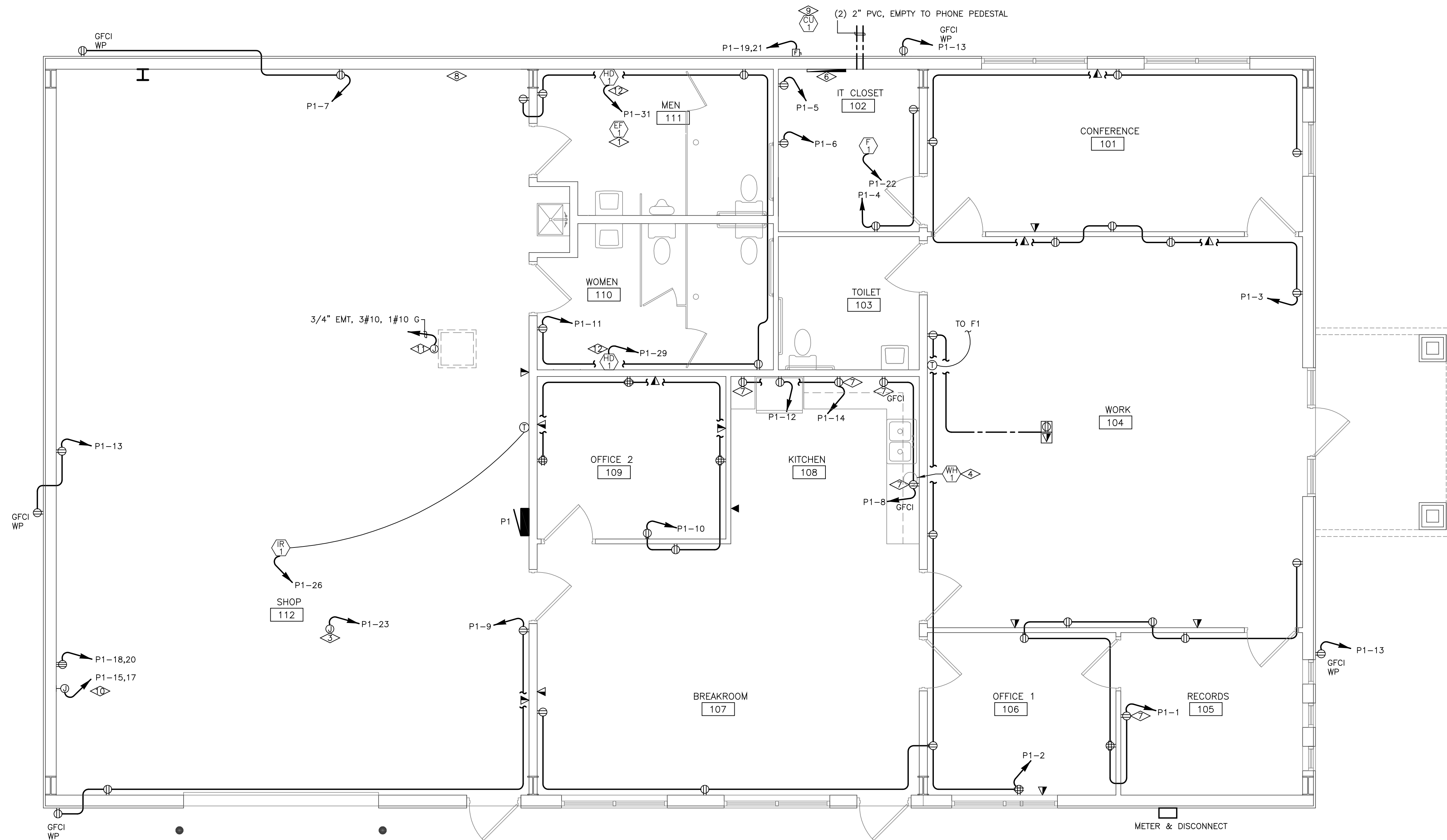
VOLTAGE: 120/240 PHASE: 1 WIRES: 3 MOUNTING: SURFACE	
MAIN BREAKER: 400 MAIN LUGS: BUS: 400	
CONNECTED LOAD: ØA: ØB: ØC: DEMAND LOAD:	
DESCRIPTION	DESCRIPTION
RECEPTS: 104, 105, 106	20 1 1 A 2 1 20 RECEPTS: 104, 106, 107
RECEPTS: 101, 104	20 1 3 B 4 1 20 RECEPTS: 102
RECEPTS: RACK	20 1 5 A 6 1 20 RECEPTS: RACK
RECEPTS: SHOP	20 1 7 B 8 1 20 RECEPTS: KITCHEN
RECEPTS: SHOP	20 1 9 A 10 1 20 RECEPTS: 107, 109
RECEPTS: RESTROOM	20 1 11 B 12 1 20 REFRIGERATOR
RECEPTS: EXTERIOR	20 1 13 A 14 1 20 RECEPTS: KITCHEN
AIR COMPRESSOR	20 2 15 B 16 1 20 SPARE
	-- 17 A 18 2 50 WELDER
CU 1	40 2 19 B 20 --
	-- 21 A 22 1 20 FURNACE
GARAGE DOOR OPERATOR	20 1 23 B 24 1 20 WH-1
LIGHTING, EF1	15 1 25 A 26 1 15 IR HEAT
LIGHTING	20 1 27 B 28 1 20 EXTERIOR LIGHTING
HAND DRYER #1 GFCI	20 1 29 A 30 1 20 LIGHTING
HAND DRYER #2 GFCI	20 1 31 B 32 1 20 SPARE
SPACE	20 1 33 A 34 1 20 SPARE
SPACE	-- 35 B 36 -- SPACE
SPACE	-- 37 A 38 -- SPACE
SPACE	-- 39 B 40 -- SPACE
SPACE	-- 41 A 42 -- SPACE

DRAWING FLAG NOTES:

- ① CIRCUIT FAN TO LIGHTING PER DETAIL ON E3.
- ② INFORMATION ABOUT THIS EQUIPMENT NOT KNOWN AT THE TIME OF DESIGN, COORDINATE EXACT REQUIREMENTS WITH OWNER PRIOR TO ORDERING ANY MATERIAL.
- ③ INSTALL ANY AND ALL CONTROL RACEWAY AND CONDUCTORS AS REQUIRED. COORDINATE PLACEMENT OF CONTROLS WITH OWNER.
- ④ CIRCUIT WATER HEATER #1 TO P1-24.
- ⑤ NOT USED.
- ⑥ INSTALL 3/4" FIREPROOF PLYWOOD, LABEL SIDE OUT FROM FLOOR TO CEILING ON THIS WALL. DO NOT PAINT.
- ⑦ COORDINATE MOUNTING HEIGHT WITH CASEWORK AND CABINERY. SEE ARCHITECTURAL DRAWINGS.
- ⑧ COLD WATER SERVICE IS LOCATED IN THIS AREA.
- ⑨ INSTALL ANY AND ALL RACEWAY, CONDUCTORS, AND EQUIPMENT REQUIRED TO PROVIDE A FULLY FUNCTIONAL SYSTEM.
- ⑩ VERIFY LOCATION WITH OWNER.
- ⑪ PROVIDE JUNCTION BOX FOR FUTURE EVAPORATIVE COOLER. SEE MECHANICAL PLAN FOR MORE DETAILS.
- ⑫ COORDINATE EXACT LOCATION WITH ARCHITECTURAL PLANS PRIOR TO INSTALLATION.

STRUCTURED CABLING NOTES:

1. ALL STRUCTURED CABLING SHALL BE CAT 5E POLONIUM RATED.
2. TERMINATE AND LABEL ALL CABLES.
3. INSTALL 6 FEET LOOP IN IT ROOM, ARRANGE PER OWNER'S DIRECTION.



POWER PLAN
1/4" = 1'-0"

P1: 2009 001 Rev. 028 08/21 Cemetery Building Final Bid Drawings 08/21/09 12:49:54 PM 11/03/09
 BURKE ASSOCIATES, INC. MECHANICAL & ELECTRICAL ENGINEERS
 2518 MONUMENT RD., SUITE A
 GRAND JUNCTION, CO 81507
 PHONE: (970) 242-5900
 FAX: (970) 242-5833
 PROJECT NO. 0903 PHASE CD
 ISSUE DATE 08/31/09

Copyright 2009
 All designs appearing herein shall not be duplicated, produced, or otherwise used without the written consent of DKO Architecture, PC.

DKO Architecture, PC
 1109 Gregory Place
 Colorado Springs, CO
 (719) 391-8762
 info@dkoarch.com

ORCHARD MESA CEMETERY
 263 26 1/4 Rd
 GRAND JUNCTION, CO

BA BURKE ASSOCIATES, INC.
 MECHANICAL & ELECTRICAL ENGINEERS
 2518 MONUMENT RD., SUITE A
 GRAND JUNCTION, CO 81507
 PHONE: (970) 242-5900
 FAX: (970) 242-5833

Project No. 0903 Phase CD
 Issue Date 08/31/09
E2

GENERAL DRAWING NOTES:

- THESE DRAWINGS ARE DIAGRAMMATIC. REFER TO THE ARCHITECTURAL, CIVIL, STRUCTURAL, AND MECHANICAL DRAWINGS FOR EXACT DIMENSIONS.
- REFER TO THE ARCHITECTURAL DRAWINGS, ELEVATIONS, DETAILS, AND DIAGRAMS FOR LOCATIONS OF THE FLOOR AND WALL DEVICES. IF DEVICES ARE NOT NOTED OTHERWISE THEY SHALL BE MOUNTED LONG AXIS VERTICAL AT THE FOLLOWING HEIGHTS AFF TO CENTER OF DEVICE: SWITCHES +48", RECEPTACLES +16", VOICE/DATA JACKS +16".
- COORDINATE ANY AND ALL EQUIPMENT LOCATIONS WITH THE OWNER PRIOR TO ROUGH-IN. COORDINATE ANY AND ALL WIRING DEVICE LOCATIONS WITH THE ARCHITECTURAL ELEVATIONS, CASEWORK, SHOP DRAWINGS, AND EQUIPMENT INSTALLATION DRAWINGS. COORDINATE THE LOCATION OF ANY AND ALL MECHANICAL EQUIPMENT WITH THE MECHANICAL DRAWINGS, MECHANICAL SUBMITTALS, AND THE MECHANICAL CONTRACTOR PRIOR TO ROUGH-IN. COORDINATE THE LOCATION OF ANY AND ALL LUMINAIRES WITH THE ARCHITECTURAL REFLECTED CEILING PLANS.
- ANY AND ALL ITEMS DAMAGED BY THE CONTRACTOR SHALL BE REPLACED BY THE CONTRACTOR AT NO ADDITIONAL COST TO THE OWNER.
- ALL BRANCH CIRCUITS AND FEEDERS SHALL HAVE AN EQUIPMENT GROUNDING CONDUCTOR. ALL CONDUCTORS SHALL BE SIZE #12 AWG UNLESS NOTED OTHERWISE. BRANCH CIRCUITS SHOWN AS A SINGLE HOMERUN SHALL NOT BE COMBINED WITH OTHER CIRCUITS.
- ELECTRICAL DEVICES PROJECTING FROM THE WALLS WITH THEIR LEADING EDGES BETWEEN 27" AND 80" AFF" SHALL PROTRUDE NO MORE THAN 4" INTO WALKWAYS OR CORRIDORS FOR ADA COMPLIANCE.
- REFER TO THE ELECTRICAL SPECIFICATIONS FOR ADDITIONAL INFORMATION.
- THE CONTRACTOR SHALL MAINTAIN FIRE-RATINGS FOR ALL CONDUIT PENETRATIONS THROUGH FIRE-RATED CONSTRUCTION.
- BACK TO BACK MOUNTING OF RECEPTACLES OR COMMUNICATION OUTLETS IS PROHIBITED. THE MINIMUM SEPARATION BETWEEN DEVICES SHALL BE 6" O.C. IN COMMON WALLS AND 24" O.C. IN SOUND-RATED WALLS.
- GFCI DEVICES SHALL BE PROVIDED AS REQUIRED BY NEC AND SHALL COMPLY WITH NEC AND LOCAL REQUIREMENTS. NO FEED-THRU GFCI PROTECTION SHALL BE PERMITTED FOR DOWNSTREAM DEVICES. ALL GFCI RECEPTACLES SHALL BE UL 943 2006 "LOCK-OUT" ACTION OR "NOTIFICATION" COMPLIANT.
- DUAL-LEVEL SWITCHING SHALL BE TWO SWITCHES PLACED IN A DOUBLE GANG BOX. THE SWITCH CLOSEST TO THE DOORWAY SHALL CONTROL THE OUTBOARD LAMP(S) AND THE OTHER SWITCH SHALL CONTROL THE INBOARD LAMP(S) UNLESS OTHERWISE DEPICTED ON THE DRAWINGS.
- LUMINAIRES SHOWN HALF SHADED SHALL HAVE THE OUTBOARD LAMPS CONNECTED TO THE LIFE SAFETY CIRCUIT OR THE EMERGENCY BATTERY PACK. FOR BATTERY PACK FIXTURES THAT DO NOT CONTAIN AN INTERNAL ILLUMINATED LED, PROVIDE A VISIBLE RED DOT FOR QUICK IDENTIFICATION OF THE FIXTURE.
- ALL LOW VOLTAGE AND SYSTEMS CABLING LOCATED ABOVE THE ACCESSIBLE CEILING SHALL BE PROPERLY RATED FOR THE APPLICATION. WITHOUT EXCEPTION, ALL CABLING SHALL BE HUNG FROM BRIDAL-TYPE RINGS OR PLACED IN CABLE TRAYS BY THE ELECTRICAL CONTRACTOR. ALL CONCEALED CABLING SHALL BE RUN IN 1" CONDUIT TO THE NEAREST ACCESSIBLE CEILING LOCATION. THE ELECTRICAL CONTRACTOR IS RESPONSIBLE FOR COORDINATING THE REQUIRED RACEWAYS WITH SYSTEMS SUBCONTRACTORS AND VENDORS (TELEPHONE, CABLE, TELE/DATA, PAGING, SECURITY, ETC).
- COORDINATE THE INSTALLATION OF COMMUNICATIONS CABLING, ROUTING, MOUNTING BOXES, AND TERMINATIONS WITH THE OWNER OR IT MANAGER PRIOR TO CONSTRUCTION.
- GENERAL PURPOSE OUTLETS IN STORAGE AND SHOP AREAS SHALL BE MOUNTED AT +42" AFF" UNLESS OTHERWISE DEPICTED. GENERAL PURPOSE OUTLETS ON THE EXTERIOR SHALL BE MOUNTED AT +24" AFF" UNLESS OTHERWISE DEPICTED. COORDINATE THE FINAL MOUNTING HEIGHT OF DEVICES SERVING EQUIPMENT WITH THE OWNER PRIOR TO ROUGH-IN.
- ALL 120V SINGLE PHASE GENERAL PURPOSE RECEPTACLES IN SHOP AND STORAGE AREAS SHALL BE GFCI TYPE.
- SEE SHEET E4 FOR MORE LIGHTING DETAILS.
- ALL EMERGENCY EXIT SIGNS AND EGRESS LIGHTING SHALL BE CIRCUITED TO NEAREST AVAILABLE LIGHTING CIRCUIT UNLESS OTHERWISE DEPICTED ON DRAWING.

DRAWING FLAG NOTES:

- CIRCUIT LIGHT FIXTURE IN THIS AREA TO P1-25.
- CIRCUIT LIGHT FIXTURE IN THIS AREA TO P1-27.
- CIRCUIT EXTERIOR LIGHT FIXTURE IN THIS AREA TP P1-28. EXTERIOR LIGHT FIXTURES ARE CONTROLLED BY PUSH BUTTON PHOTOCELL.
- CIRCUIT LIGHT FIXTURE IN THIS AREA TO P1-30.
- MOUNT EXTERIOR LIGHT FIXTURE IN THIS AREA @ 8'-10".
- MOUNT EXTERIOR LIGHT FIXTURE IN THIS AREA @ 13'-0".
- NOT USED.
- FIELD ADJUST LOCATIONS OF FIXTURES IN THIS AREA. EXACT LOCATION OF PERLINS IS UNAVAILABLE AT TIME OF DESIGN.
- THIS LIGHT FIXTURE SHALL BE CONTROLLED BY PHOTOELECTRIC UNIT. FIELD COORDINATE EXACT LOCATION OF PHOTOCELL SO THAT OPTIMAL SUNSHINE REACHS DEVICE OR WITH OWNER.

LUMINAIRE SCHEDULE

TYPE	MANUFACTURER CATALOG NO.	MANUFACTURER CATALOG NO.	VOLTAGE MOUNTING # OF LAMPS	BALLAST LAMP TYPE LAMP CAT. #	DESCRIPTION
A1	LITHONIA FSB 432L NDS MVOLT GE1010S E114 WGI BDP HSD36	ENGINEER APPROVED EQUIVALENT	120 SUSPENDED 4	ELECTRONIC FLUORESCENT F3218/741	48"X16"Wx4-1/2"D SPEC-BEAM FLUORESCENT HIGH BAY LIGHT FIXTURE WITH EMERGENCY BATTERY PACK, CHAIN HANG @ 13'-0" A.F.F.
A2	LITHONIA FSB 432L NDS MVOLT GE1010S E114 BDP HSD36	ENGINEER APPROVED EQUIVALENT	120 SUSPENDED 4	ELECTRONIC FLUORESCENT F3218/741	48"X16"Wx4-1/2"D SPEC-BEAM FLUORESCENT HIGH BAY LIGHT FIXTURE, 11 GAUGE WIRE GUARD, CHAIN HANG @ 13'-0" A.F.F.
A3	LITHONIA FSB 232L NDS MVOLT GE1010S BDP HSD36	ENGINEER APPROVED EQUIVALENT	MVOLT SUSPENDED 2	ELECTRONIC FLUORESCENT F3218/741	48"X16"Wx4-1/2"D SPEC-BEAM FLUORESCENT HIGH BAY LIGHT FIXTURE WITH EMERGENCY BATTERY PACK, CHAIN HANG PER OWNER.
A4	LITHONIA FSB 232L NDS MVOLT GE1010S BDP HSD36	ENGINEER APPROVED EQUIVALENT	MVOLT SUSPENDED 2	ELECTRONIC FLUORESCENT F3218/741	48"X16"Wx4-1/2"D SPEC-BEAM FLUORESCENT HIGH BAY LIGHT FIXTURE WITH EMERGENCY BATTERY PACK, CHAIN HANG PER OWNER.
C	HDR 70MH-120-81	ENGINEER APPROVED EQUIVALENT	120 CEILING RECESSED 1	ELECTRONIC CF70562/C/D	15-3/8" SQUARE RECESSED FIXTURE W/156" PRISMATIC POLYCARBONATE LENS AND ELECTRONIC BALLAST. DAMP LOCATION LISTED.
E1	LITHONIA 2G18 2 32 A12 120 GE1010S	ENGINEER APPROVED EQUIVALENT	120 CEILING GRID 2	ELECTRONIC FLUORESCENT F3218/741	2'X4' TROFFER FIXTURE, LOW-PROFILE, STATIC T8 LUMINAIRE, STANDARD STEEL DOOR FRAME. STANDARD LATCH PROVIDES SPRING ACTION.
E2	LITHONIA 2G18 F 2 32 A12 120 GE1010S	ENGINEER APPROVED EQUIVALENT	120 RECESSED 2	ELECTRONIC FLUORESCENT F3218/741	2'X4' TROFFER FIXTURE, LOW-PROFILE, STATIC T8 LUMINAIRE, STANDARD STEEL DOOR FRAME. STANDARD LATCH PROVIDES SPRING ACTION.
F	LITHONIA TWAC 50M 120 PE LPI DBL	ENGINEER APPROVED EQUIVALENT	120 BUILDING/WALL 1	METAL HALIDE 50W MH	10"X11-1/2"Wx8-15/16"D MINI WALL PACK. REAR HOUSING IS RUGGED, DIE-CAST ALUMINUM. MOUNT PER FLAG NOTE.
G	LITHONIA TWAC 70M 120 PE LPI DBL	ENGINEER APPROVED EQUIVALENT	120 BUILDING/WALL 1	METAL HALIDE 70W MH	10"X11-1/2"Wx8-15/16"D MINI WALL PACK. REAR HOUSING IS RUGGED, DIE-CAST ALUMINUM. MOUNT PER FLAG NOTE.
H0	LITHONIA LHM5M3S120/277 RO/ELN, SEE NOTE 4	ENGINEER APPROVED EQUIVALENT	120/277 WALL/CEILING N/A	NONE REQUIRED LED WITH UNIT	12-1/4"Wx7-1/2"Hx2"D, WHITE POLYCARB. HOUSING W/GREEN LETTERING, NICAD BATTERY W/NO REMOTE HEAD.
H0	LITHONIA ELA-W-H0806	ENGINEER APPROVED EQUIVALENT	120/277 WALL/CEILING 1	NONE REQUIRED INCANDESCENT WITH UNIT	4.75 Wx7.75 Hx4.5 D WHITE SEALED REMOTE MOUNTED FIXTURE, 6 VOLT, 8 WATT LAMP. VERIFY COMPATIBILITY WITH EMERGENCY FIXTURE.

- NOTES:**
- THE ELECTRONIC FLUORESCENT BALLAST SHALL HAVE A TOTAL HARMONIC DISTORTION OF LESS THAN 10% AND A BALLAST FACTOR EQUAL TO OR GREATER THAN 85%.
 - ALL LIGHTING FIXTURES DENOTED WITH "EM" OR HALF SHADED SHALL BE PROVIDED WITH A BATTERY PACK WITH A MINIMUM OF 1300 INITIAL LUMENS, AND 1000 LUMENS AT 90 MINUTES USING 32W-T8-4" LAMPS FOR OPERATION OF TWO LAMPS IN A 4 LAMP FIXTURE AND 1 LAMP IN A 2 OR 3 LAMP FIXTURE. BALLAST SHALL BE CONNECT TO THE UNSWITCHED SIDE OF THE LIGHTING CIRCUIT.
 - GRID TROFFER TYPE LIGHTING FIXTURES SHALL NOT BE SUPPORTED FROM THE T-BAR CEILING GRID.
 - THIS EXIT SIGN REQUIRES THE EXTRA BATTERY CAPACITY TO OPERATE THE REMOTELY LOCATED EMERGENCY HEAD FOR EGRESS AWAY FROM THE BUILDING.
 - DIMMER LOAD CAPACITY SHALL BE 125% OR MORE FOR INCANDESCENT LOADS, AND 200% OR MORE FOR FLUORESCENT LOADS. FAN SPEED CONTROL SHALL BE RATED AT 125% OR MORE OF THE TOTAL LOAD.
 - ALL FLUORESCENT LIGHTS CONTROLLED BY A MOTION SENSOR SHALL USE PROGRAM START BALLASTS.
 - IN THE EVENT OF A LIGHT FIXTURE IS SPECIFIED TO HAVE AN EMERGENCY BALLAST AND THE BALLAST WILL NOT FIT WITHIN THE FIXTURE HOUSING, THE BALLAST SHALL BE PROPERLY MOUNTED IN A REMOTE LOCATION.

ELECTRICAL LEGEND

- BRANCH CIRCUIT PANELBOARD
- TELEPHONE TERMINAL BOARD
- MOTOR
- FUSED SAFETY SWITCH / DISCONNECT
- VARIABLE FREQUENCY DRIVE
- CIRCUITRY HOMERUN: PANEL LA - CIR. #7
- CONDUIT OR WIRE CONCEALED IN WALL/CLG.
- CONDUIT OR WIRE UNDERFLOOR/UNDERGND.
- CEILING JUNCTION BOX - SURFACE/FLUSH
- WALL JUNCTION BOX - SURFACE/FLUSH
- DUPLEX RECEPTACLE
- SPLIT WIRED DUPLEX RECEPTACLE
- FOURPLEX RECEPTACLE
- APPLIANCE RECEPTACLE - 3 WIRE
- THERMOSTAT
- TELEPHONE OUTLET
- COMPUTER-DATA
- COMBINATION DATA/TELEPHONE
- TELEVISION OUTLET

SWITCHES

- \$ SINGLE POLE SWITCH
- \$2 TWO POLE SWITCH
- \$3 THREE-WAY SWITCH
- \$4 FOUR-WAY SWITCH
- \$D DIMMER SWITCH
- \$10 MANUAL MOTOR STARTER
- \$M OCCUPANCY/MOTION SENSOR

LIGHTING

- # FLUORESCENT FIXTURE # INDICATES FIXTURE TYPE
- FLUORESCENT FIXTURE WITH EMERGENCY BALLAST
- WALL BRACKET FLUORESCENT FIXTURE
- OPEN STRIP FLUORESCENT FIXTURE
- SURFACE CEILING INCANDESCENT OR H.I.D. FIXTURE
- WALL MOUNTED INCANDESCENT OR H.I.D. FIXTURE
- RECESSED CEILING DOWN LIGHT
- DOUBLE FACE EXIT SIGN, WALL AND CEILING MOUNTED
- SINGLE FACE EXIT SIGN, WALL AND CEILING MOUNTED
- WALL MOUNTED EMERGENCY LIGHT
- REMOTE MOUNTED EMERGENCY HEAD

DESIGNATIONS

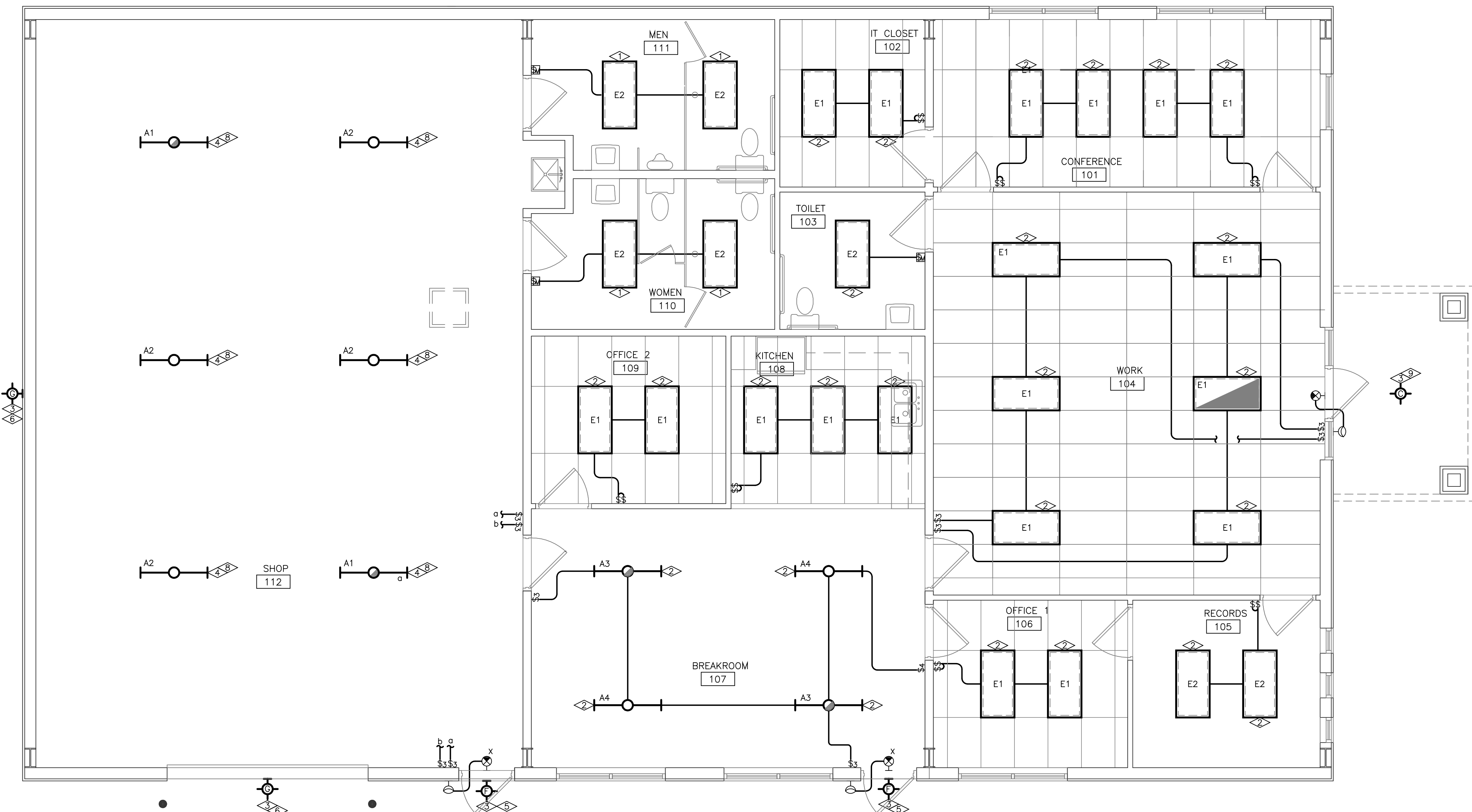
- MECHANICAL CONTRACTOR FURNISHED EQUIPMENT
- OWNER FURNISHED EQUIPMENT
- DRAWING FLAG NOTE
- ROOM DESIGNATION

ABBREVIATIONS

- NL EXISTING NIGHT/SECURITY LIGHT - DO NOT SWITCH
- WP WEATHERPROOF
- A.F.F. ABOVE FINISHED FLOOR
- A.F.G. ABOVE FINISHED GRADE
- GFCI GROUND FAULT CIRCUIT INTERRUPTER
- GP RECEPTACLE IS GFCI PROTECTED FROM AN UP STREAM GFCI RECEPTACLE
- EM EMERGENCY FUNCTION
- 42" MOUNTING HEIGHT - A.F.F. OR A.F.G. TO C.L. HIGH
- HID CB INTENSITY DISCHARGE LIGHTING TYPE CIRCUIT BREAKER
- SWD CB U.L. LISTED AS SWITCHING DUTY CIRCUIT BREAKER

LEGEND NOTES

NOTE: SYMBOLS SHOWN ARE STANDARD. VARIATION AND/OR COMBINATION MAY BE USED ON THE PLANS SUCH AS \$ (b: SWITCHING DESIGNATION), @ (4: CIRCUIT NO.), □ 30A-2P (30A-2P: 30 AMPERE-TWO POLE), ETC. THIS LIST SHOWS STANDARD SYMBOLS AND ALL MAY NOT APPEAR ON THE PROJECT DRAWINGS; HOWEVER, WHEREVER THE SYMBOL ON THE PROJECT DRAWINGS OCCUR, THE ITEM SHALL BE PROVIDED AND INSTALLED.



LIGHTING PLAN
1/4" = 1'-0"

P:\2009 001 Rev. 04/10/07 Cemetery_Restoration\001.dwg 11:49:54 AM 02/20/09 - 1:06pm
 BURKE ASSOCIATES, INC. MECHANICAL & ELECTRICAL ENGINEERS
 2518 MONUMENT RD., SUITE A
 GRAND JUNCTION, CO 81507
 PHONE (970) 243-9990
 FAX (970) 242-8833
 PROJECT NO. 0903
 DATE 08/31/09

Copyright 2009
All designs appearing herein shall not be duplicated, produced, or otherwise used without the written consent of DKO Architecture, PC.



ORCHARD MESA CEMETERY
 263 26 1/4 Rd
 GRAND JUNCTION, CO

