

CITY OF GRAND JUNCTION

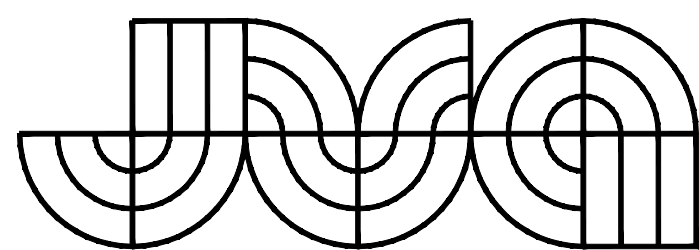
LINDEN AVE WATERLINE PHASE 1 IMPROVEMENTS

GRAND JUNCTION, COLORADO

BID SET

CONTACTS

OWNER:	CITY OF GRAND JUNCTION 333 WEST AVENUE, BUILDING C GRAND JUNCTION, CO 81501	MARK RITTERBUSH, P.E. (970) 256-4185 MARKI@GJ.CITY.ORG
ENGINEER:	JVA, INC 817 COLORADO AVENUE, SUITE 301 GLENWOOD SPRINGS, CO 81601	ADAM RACETTE, P.E. (303) 565-4949 ARACETTE@JVAJVA.COM
SURVEYOR:	WHS, INC 1048 INDEPENDENT AVE, SUITE A207 GRAND JUNCTION, CO 81505	ROB WHITSON (970) 257-9101 RWHITSON@WHSMITHPC.COM

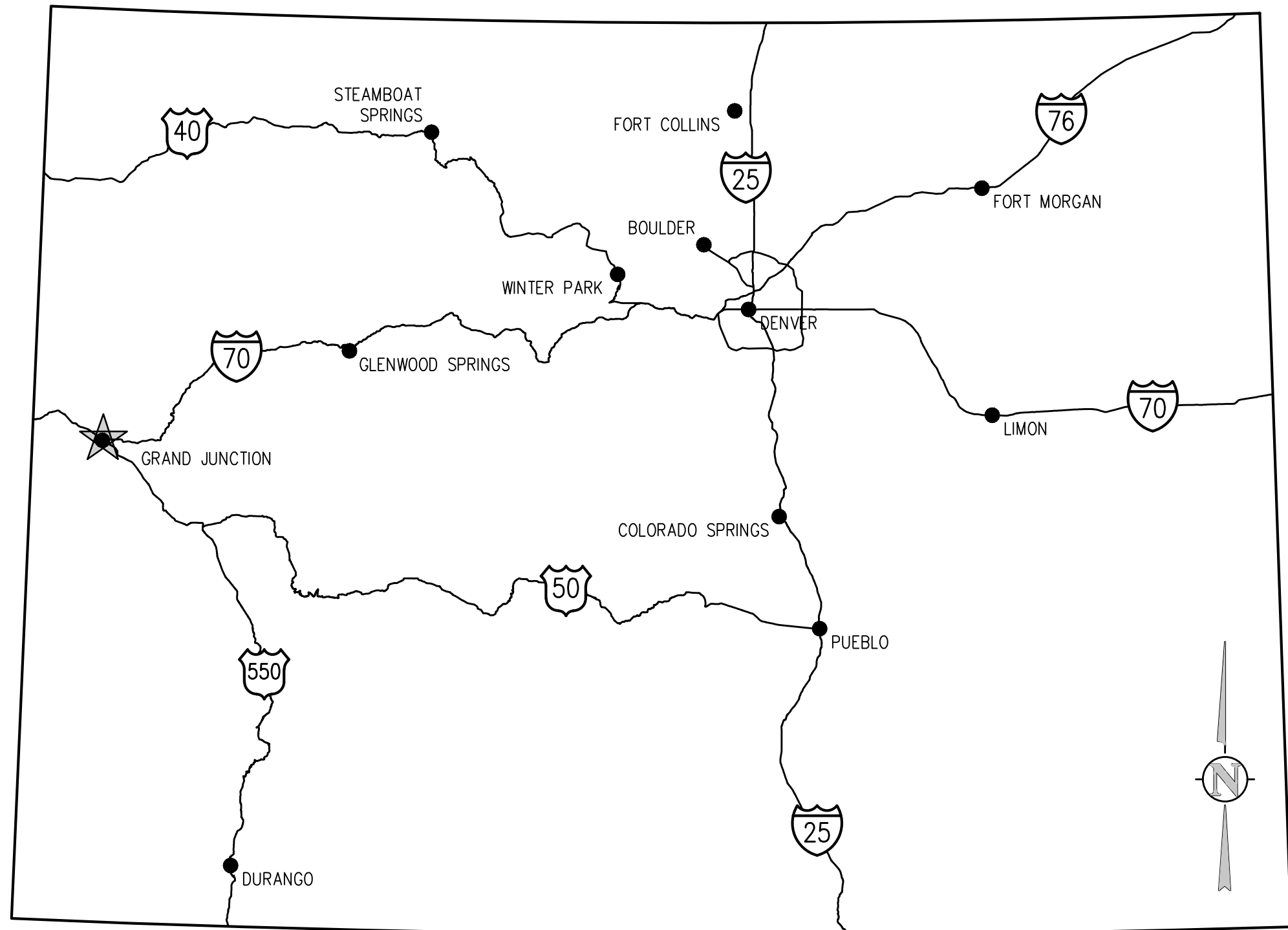


CONSULTING ENGINEERS
JVA, Inc. 817 Colorado Ave., Suite 301
Glenwood Springs, CO Zip 81601
970.404.3100
www.jvajva.com
 Boulder • Fort Collins • Winter Park
 Glenwood Springs • Denver

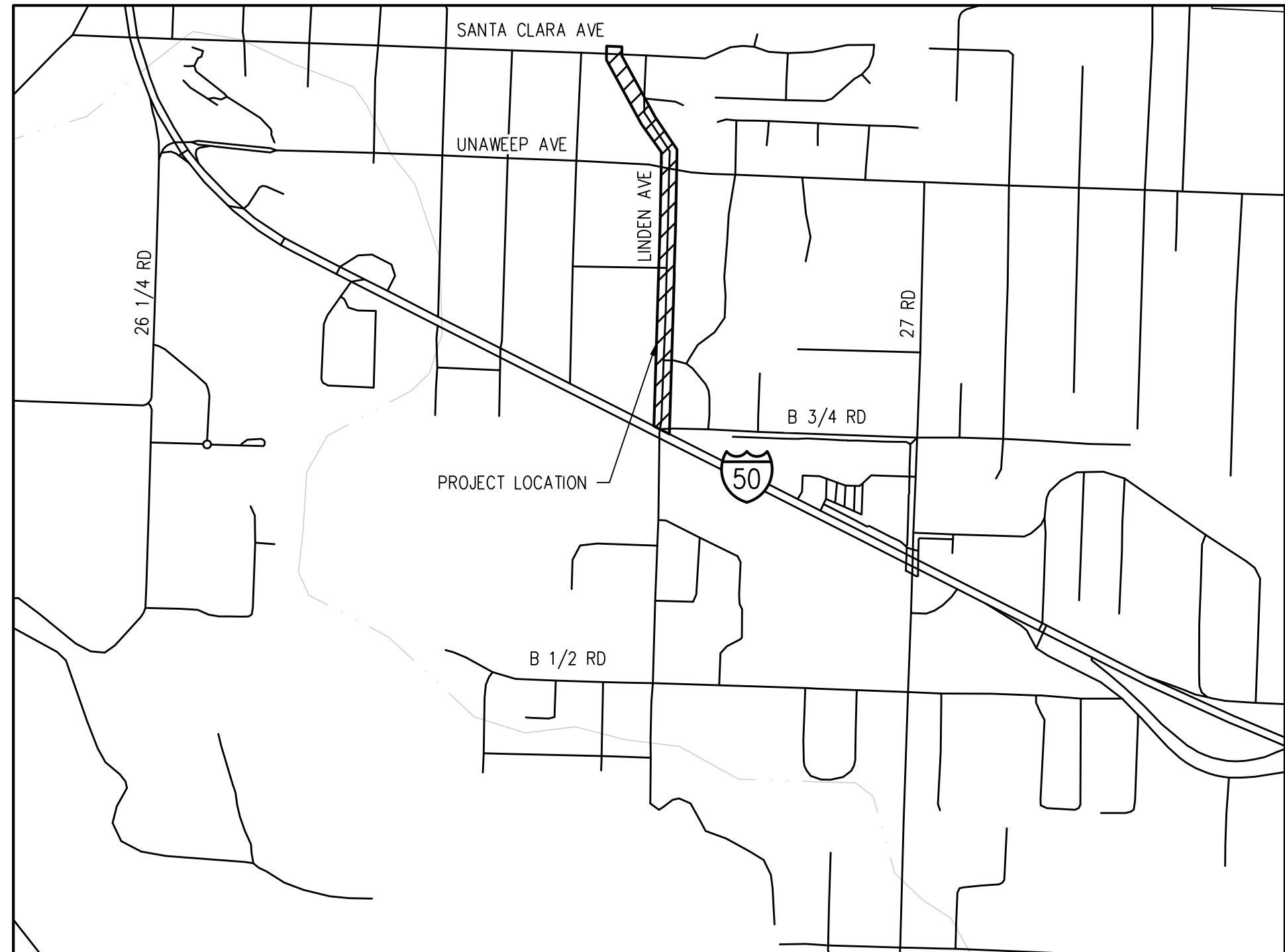
DRAWING INDEX

SHEET NO.	TITLE
G0.0	COVER SHEET
G0.1	LEGEND, NOTES, & ABBREVIATIONS
C1.0	OVERALL UTILITY PLAN
C2.0	LINDEN AVE WATERLINE PLAN AND PROFILE
C2.1	LINDEN AVE WATERLINE PLAN AND PROFILE
C2.2	LINDEN AVE WATERLINE PLAN AND PROFILE
C2.3	LINDEN AVE WATERLINE PLAN AND PROFILE
C2.4	LINDEN AVE WATERLINE PLAN AND PROFILE

OCTOBER 2024



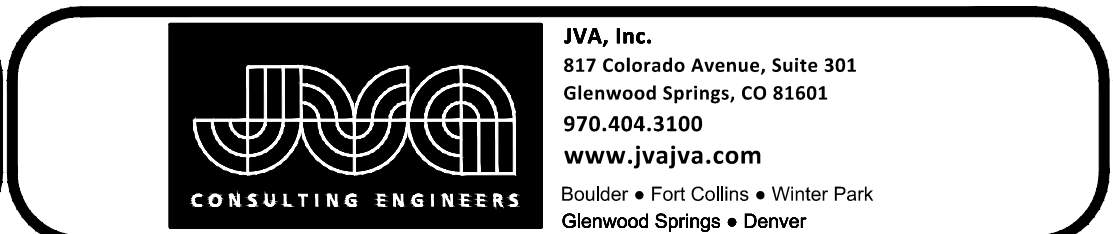
VICINITY MAP
NTS



LOCATION MAP
NTS

N:\107121\Drawings\North_Hdr\107121-02-C06-LA-00.dwg, 10/19/2024, 3:17 PM, AMF

REVISION Δ _____	DESCRIPTION _____	DATE _____	DRAWN BY ZCF/NLM	DATE 10/18/2024	SCALES: PLAN & PROFILE
REVISION Δ _____	DESIGNED BY ZCF/AMF	DATE 10/18/2024	CHECKED BY JUM	DATE 10/18/2024	
REVISION Δ _____	APPROVED BY _____	DATE _____			
REVISION Δ _____					



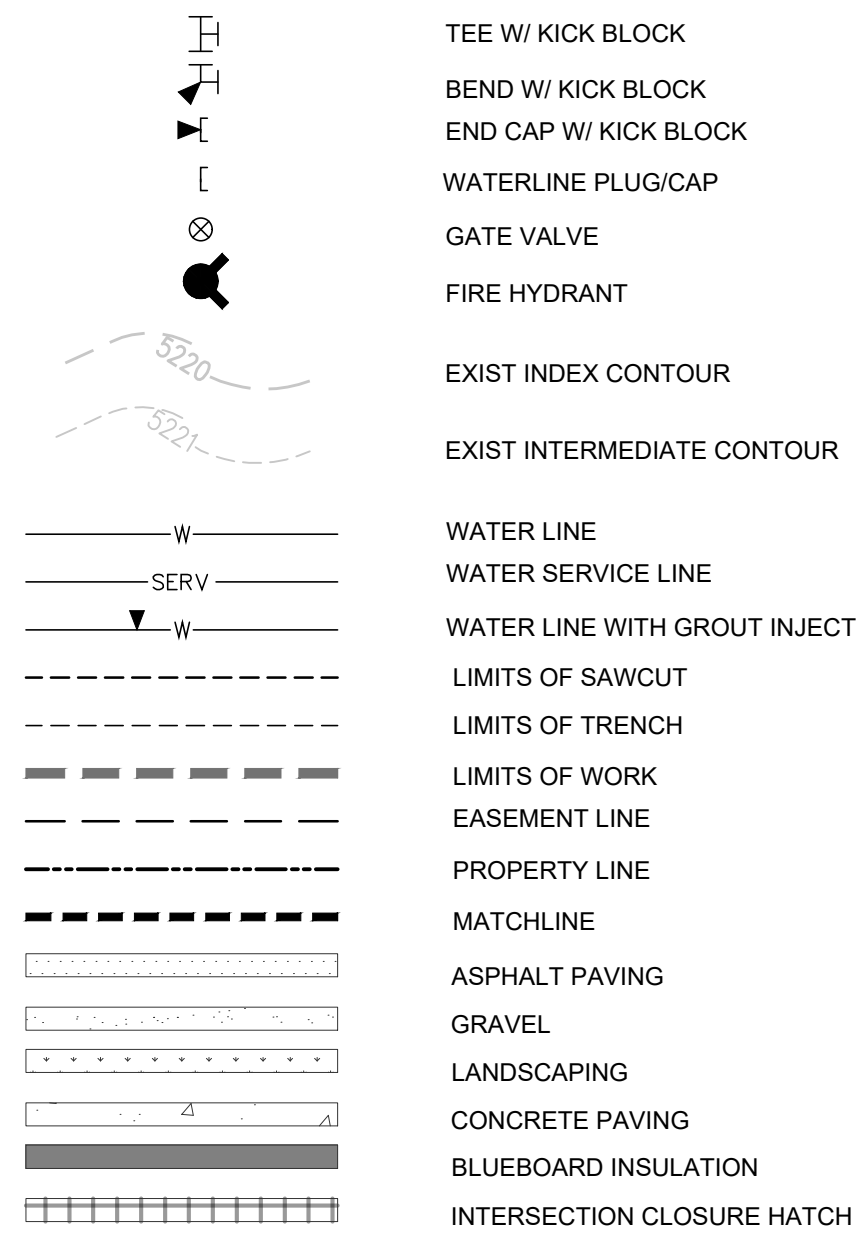
LINDEN AVE WATERLINE PHASE 1
IMPROVEMENTS
COVER SHEET

G0.0

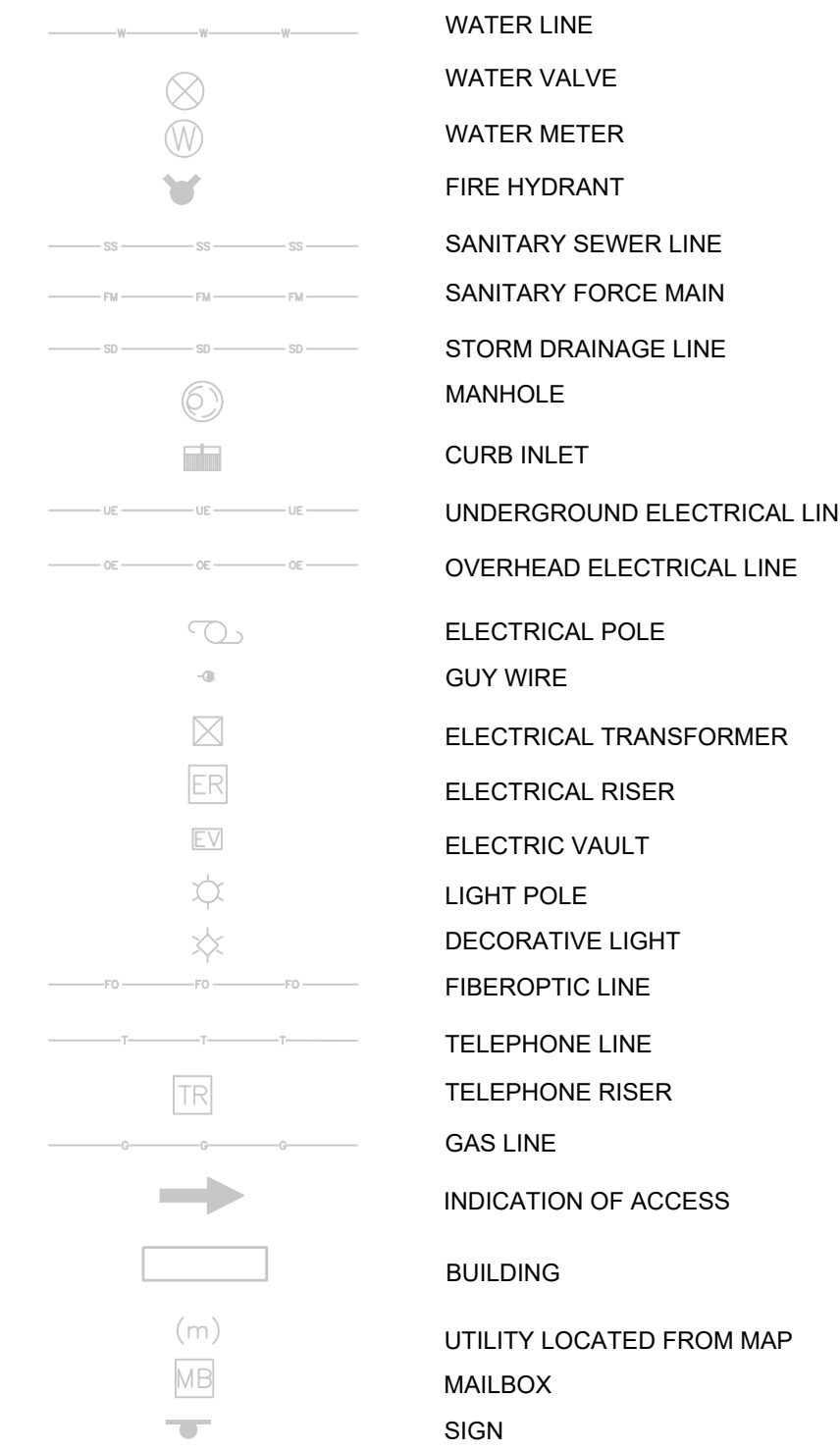
ABBREVIATIONS

Table of abbreviations for various engineering terms, including AASHTO, ABAN, AC, ADDL, ADDM, etc., and their corresponding full names.

DESIGN LEGEND



SURVEY LEGEND



NOTE: SHADED ITEMS REPRESENT EXIST FEATURES

GENERAL NOTES

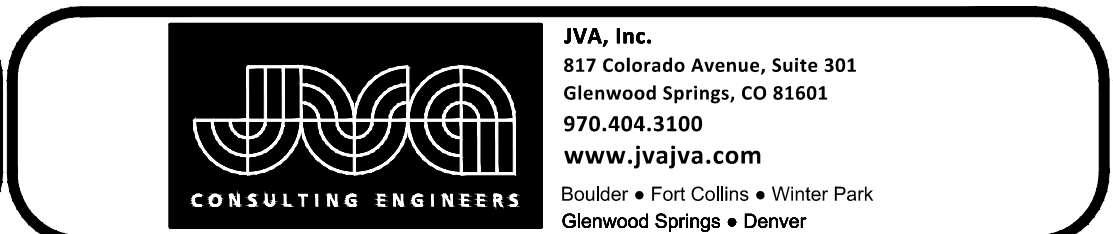
- 1. ALL MATERIALS AND WORKMANSHIP SHALL BE IN CONFORMANCE WITH THE LATEST STANDARDS AND SPECIFICATIONS OF THE CITY OF GRAND JUNCTION, COLORADO DEPARTMENT OF TRANSPORTATION, GRAND JUNCTION FIRE PROTECTION REQUIREMENTS, AND APPLICABLE STATE AND LOCAL STANDARDS AND SPECIFICATIONS. THE CONTRACTOR SHALL HAVE IN POSSESSION AT THE JOB SITE AT ALL TIMES ONE (1) SIGNED COPY OF APPROVED PLANS, STANDARDS AND SPECIFICATIONS. CONTRACTOR SHALL CONSTRUCT AND MAINTAIN EMERGENCY ACCESS ROUTES TO THE SITE AND STRUCTURE AT ALL TIMES PER THE APPLICABLE GRAND JUNCTION FIRE PROTECTION DISTRICT REQUIREMENTS. THE CONTRACTOR SHALL OBTAIN WRITTEN APPROVAL FOR ANY VARIANCE TO THE ABOVE DOCUMENTS. NOTIFY ENGINEER OF ANY CONFLICTING STANDARDS OR SPECIFICATIONS. IN THE EVENT OF ANY CONFLICTING STANDARD OR SPECIFICATION, THE MORE STRINGENT OR HIGHER QUALITY STANDARD, DETAIL OR SPECIFICATION SHALL APPLY.

Vertical text on the left margin: 10/19/2024 3:17 PM AMF

Table with columns for REVISION, DESCRIPTION, and DATE, containing revision details.

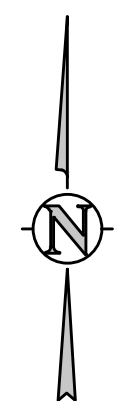
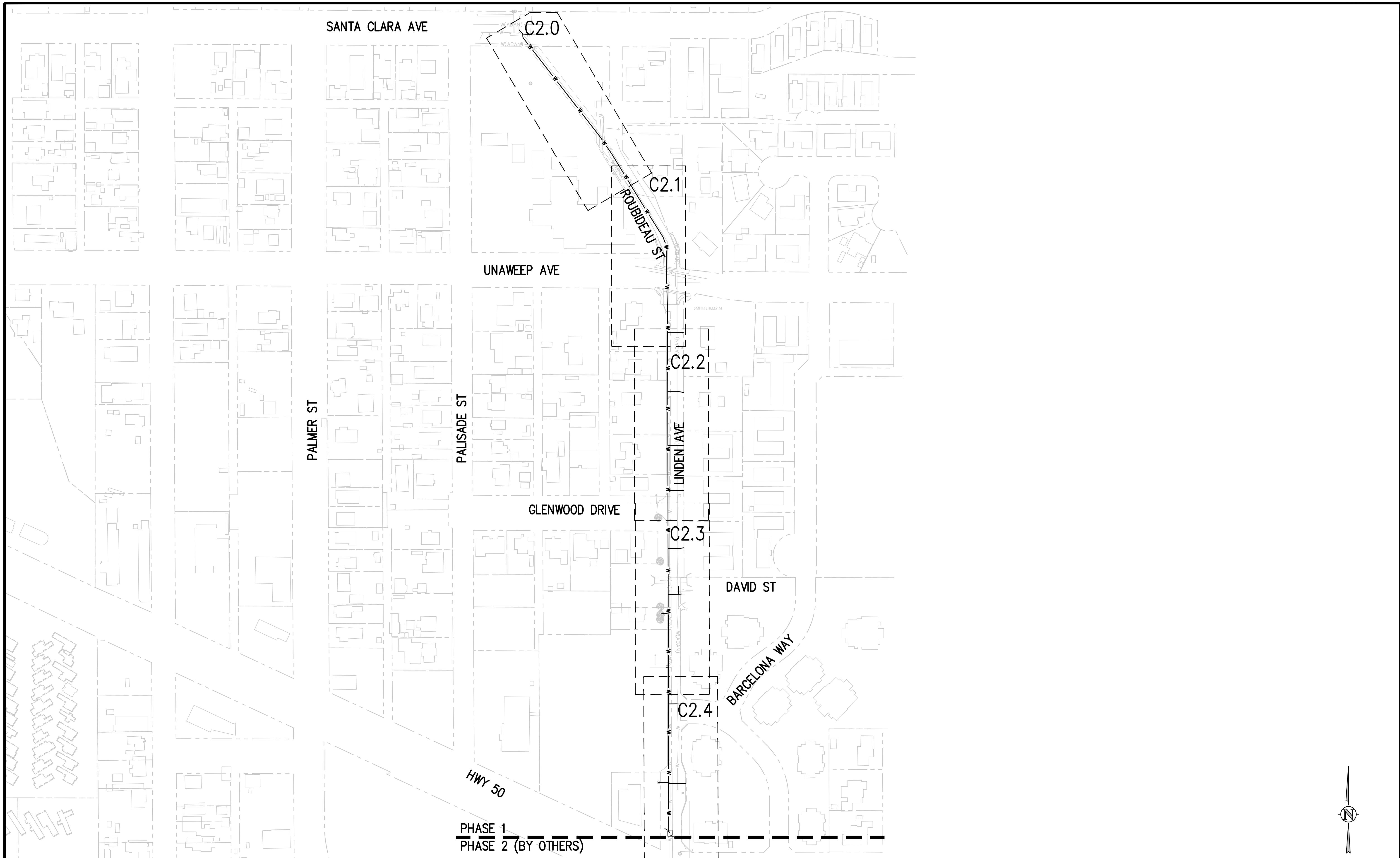
Table with columns for DRAWN BY, DESIGNED BY, CHECKED BY, APPROVED BY, and DATE, containing project personnel information.

Table with columns for SCALES and PLAN & PROFILE, containing scale information.



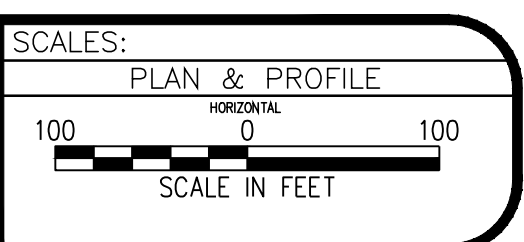
Project title: LINDEN AVE WATERLINE PHASE 1 IMPROVEMENTS. Legend, Notes, & Abbreviations.

G0.1



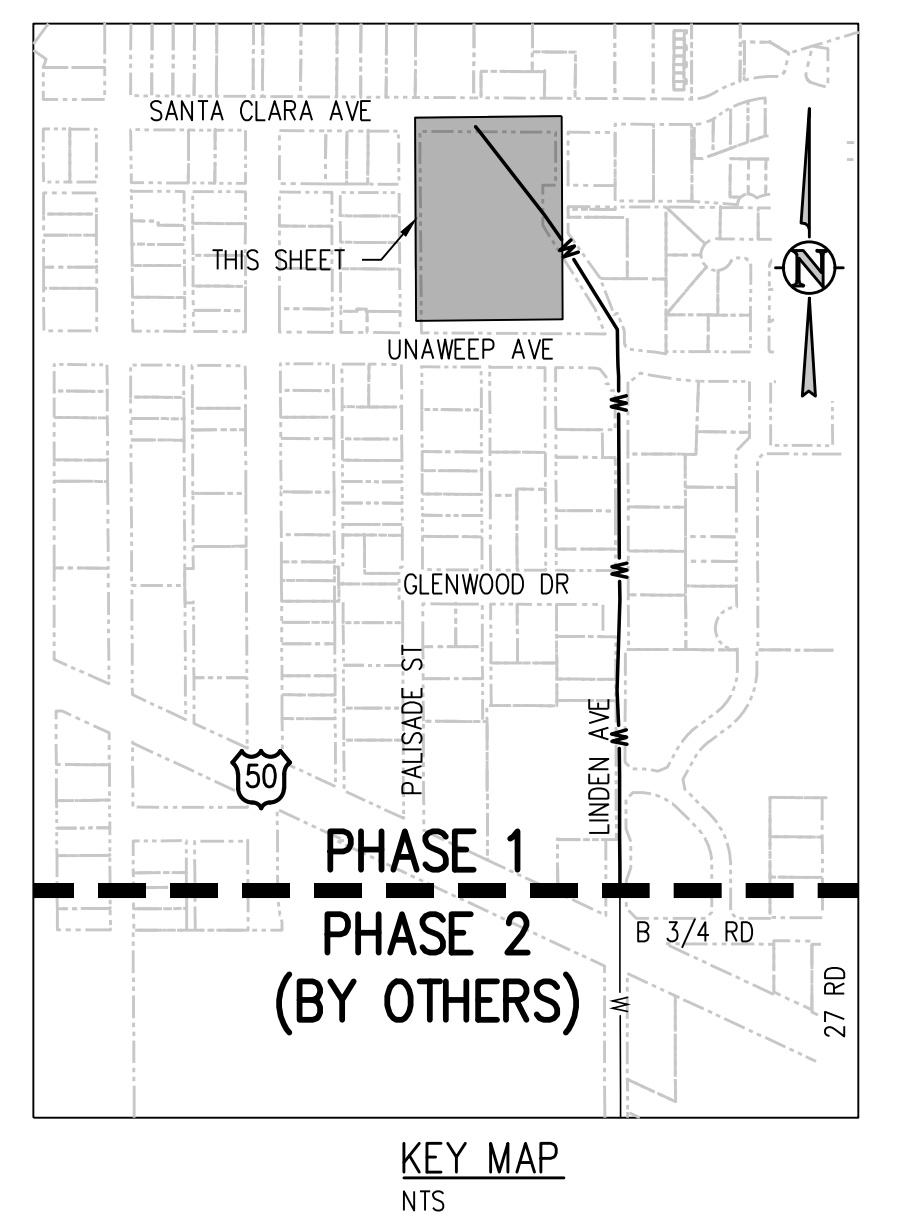
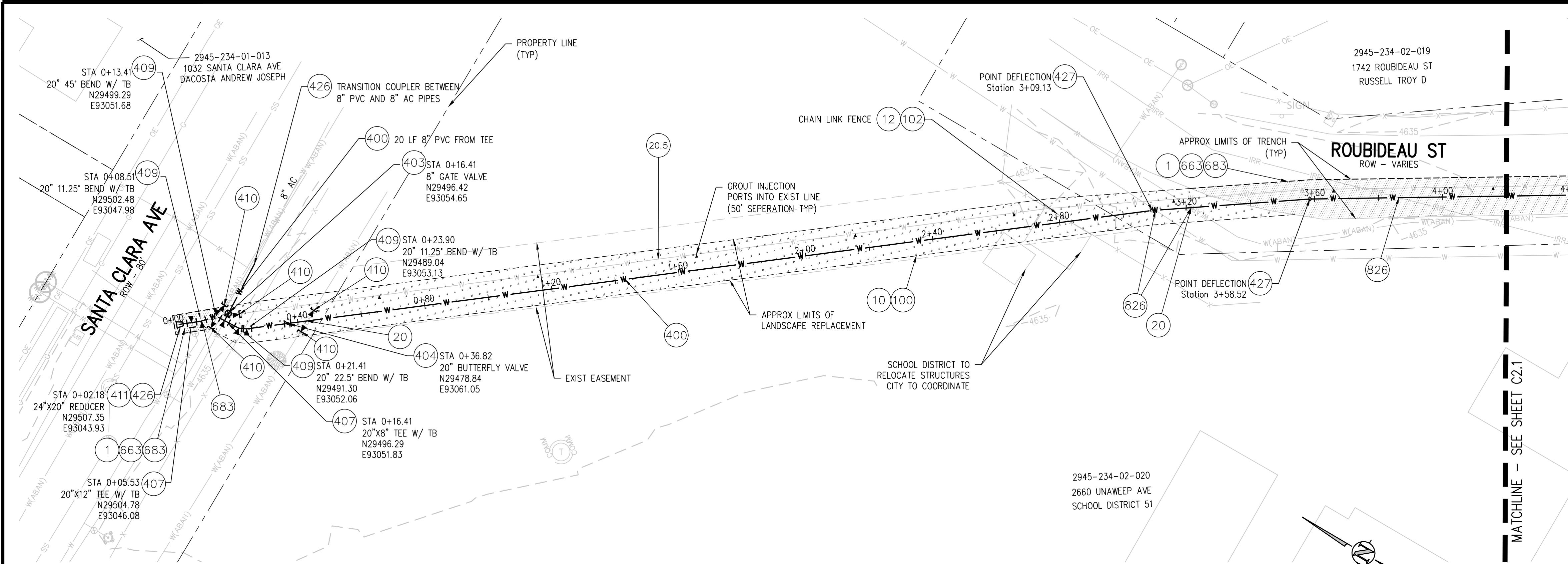
REVISION	DESCRIPTION	DATE
REVISION		
REVISION		
REVISION		
REVISION		

DRAWN BY	ZCF/NLM	DATE	10/18/2024
DESIGNED BY	ZCF/AMF	DATE	10/18/2024
CHECKED BY	JJM	DATE	10/18/2024
APPROVED BY		DATE	



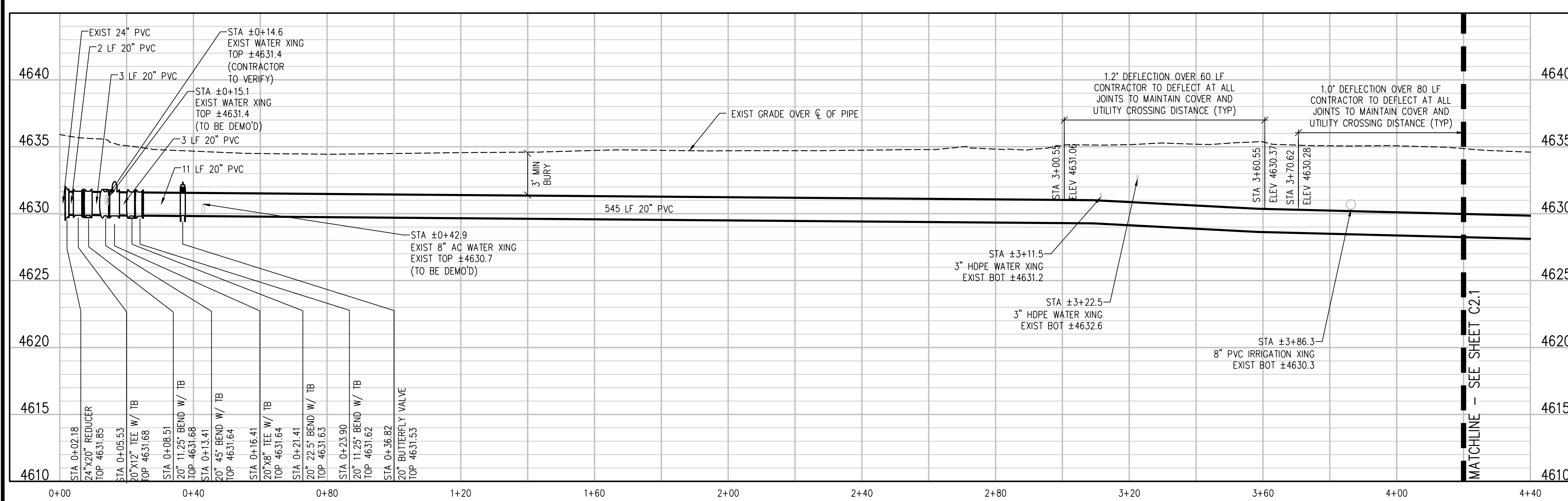
LINDEN AVE WATERLINE PHASE 1
IMPROVEMENTS
OVERALL UTILITY PLAN

C1.0



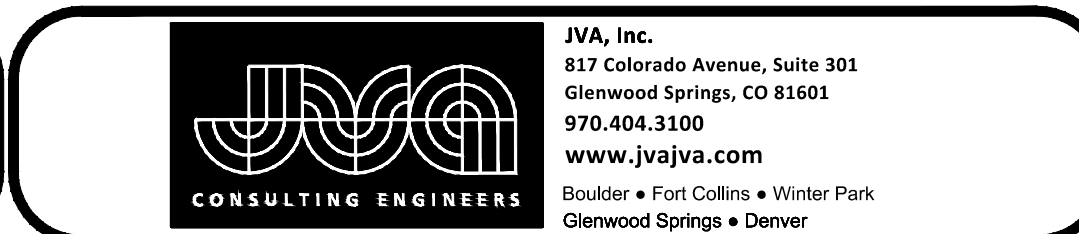
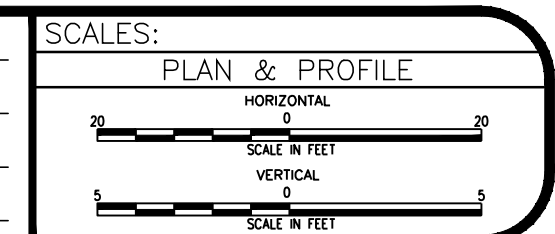
- CONSTRUCTION NOTES**
- 1 202 - REMOVAL OF ASPHALT MAT. CUT AND REMOVE ASPHALT AS SHOWN. (INDICATED BY DOT HATCH PATTERN)
 - 10 202 - REMOVAL OF LANDSCAPE GROUND COVER AND ANY UNDERLYING BARRIER. STOCKPILE PER PROPERTY OWNERS RECOMMENDATION.
 - 12 202 - REMOVAL OF FENCE AS SHOWN. (HEIGHT AND MATERIAL AS SHOW ON PLAN)
 - 20 202 - ABANDON PIPE. ABANDON BY PLUGGING REMAINING ENDS WITH CONCRETE.
 - 20.5 202 - ABANDON PIPE. ABANDON BY PLUGGING REMAINING ENDS WITH CONCRETE. GROUT INJECT EXIST PIPE AT 50' INTERVALS
 - 100 210 - RESET LANDSCAPE GROUND COVER. CONTRACTOR SHALL REMOVE GROUND COVER AND ANY UNDERLYING WEED BARRIER AS NEEDED AND STOCKPILE MATERIALS. CONTRACTOR SHALL RESET THESE MATERIALS AND PROVIDE ADDITIONAL MATERIALS AS NEEDED TO RESTORE LANDSCAPING.
 - 102 210 - RESET FENCE. (HEIGHT AND MATERIAL AS SHOW ON PLAN)
 - 400 102.7/108.2 - WATER MAIN PIPE (C-900 PVC) (SIZE AS SHOWN). INCLUDES TYPE A BEDDING AND HAUNCHING MATERIAL AND BACKFILL OF TRENCH WITH NATIVE MATERIALS MEETING 103.16 EARTH BACKFILL MATERIAL..
 - 403 102.8B/108.3 - GATE VALVE. (SIZE AS SHOWN)
 - 404 102.8E/108.3 - BUTTERFLY VALVE (SIZE AS SHOWN).
 - 407 102.8/108.3 - TEE (SIZE AS SHOWN).
 - 409 102.8/108.3 - ELBOW (SIZE AND ANGLE AS SHOWN)
 - 410 102.8/108.3 - END CAP / PLUG (SIZE AS SHOWN).
 - 426 CONNECT TO EXISTING WATER PIPE/VALVE/FITTING. THE CONTRACT UNIT PRICE FOR WATER PIPE SHALL INCLUDE THE COST OF CONNECTION TO EXISTING PIPELINE DEFLECT PIPE AS SHOWN.
 - 427 210 - RESET FENCE. (HEIGHT AND MATERIAL AS SHOW ON PLAN)
 - 663 304 - AGGREGATE BASE COURSE (CLASS 6) (6\"/>

- GROUT INJECTION NOTES:**
1. THE GROUT INJECTION PORT LOCATIONS ARE APPROXIMATE.
 2. CONTRACTOR TO SUBMIT GROUT INJECTION PLAN TO CITY FOR REVIEW AND APPROVAL. AT A MINIMUM THE PLAN SHOULD INCLUDE
 - APPROXIMATE SPACING AND LOCATIONS
 - MATERIAL SPECIFICATIONS
 - SCHEDULE AND GROUTING PLAN
 - SUBCONTRACTOR INFORMATION

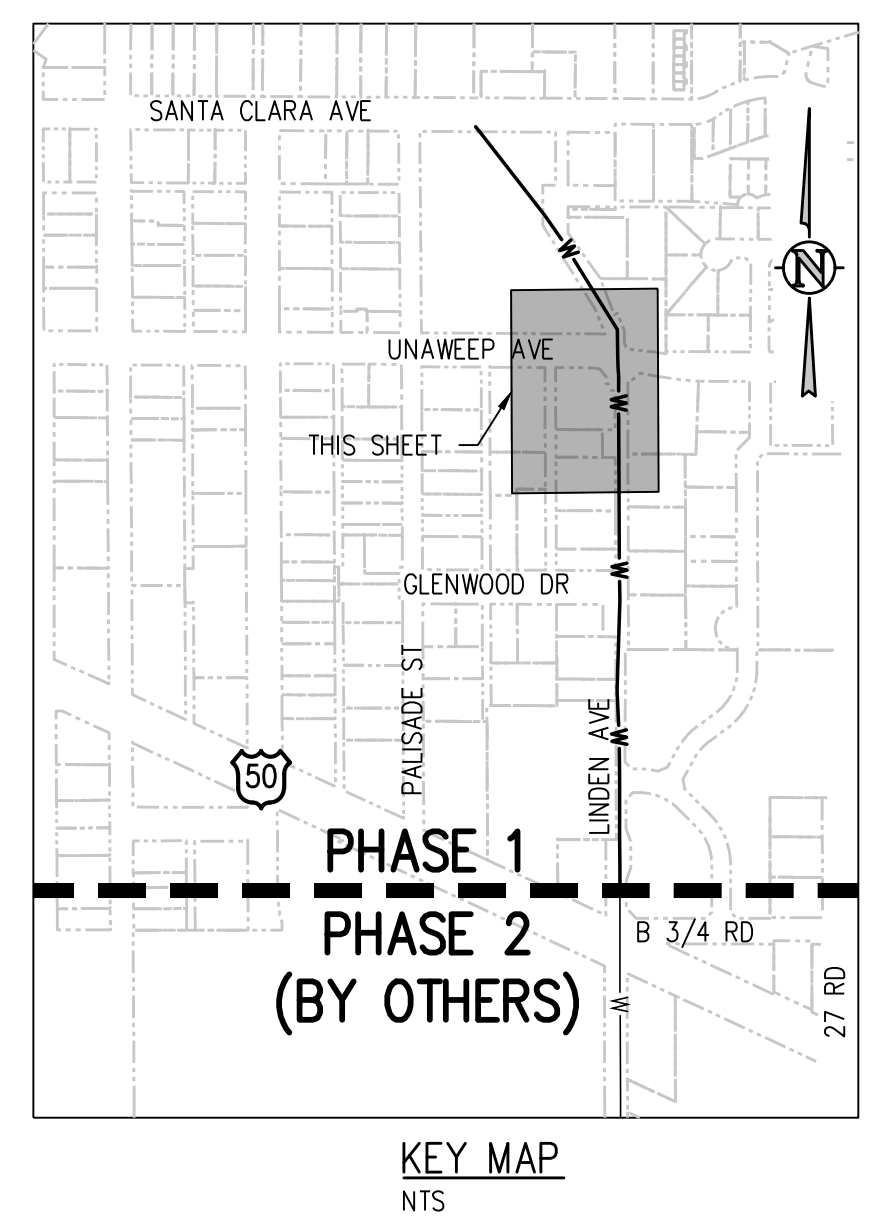
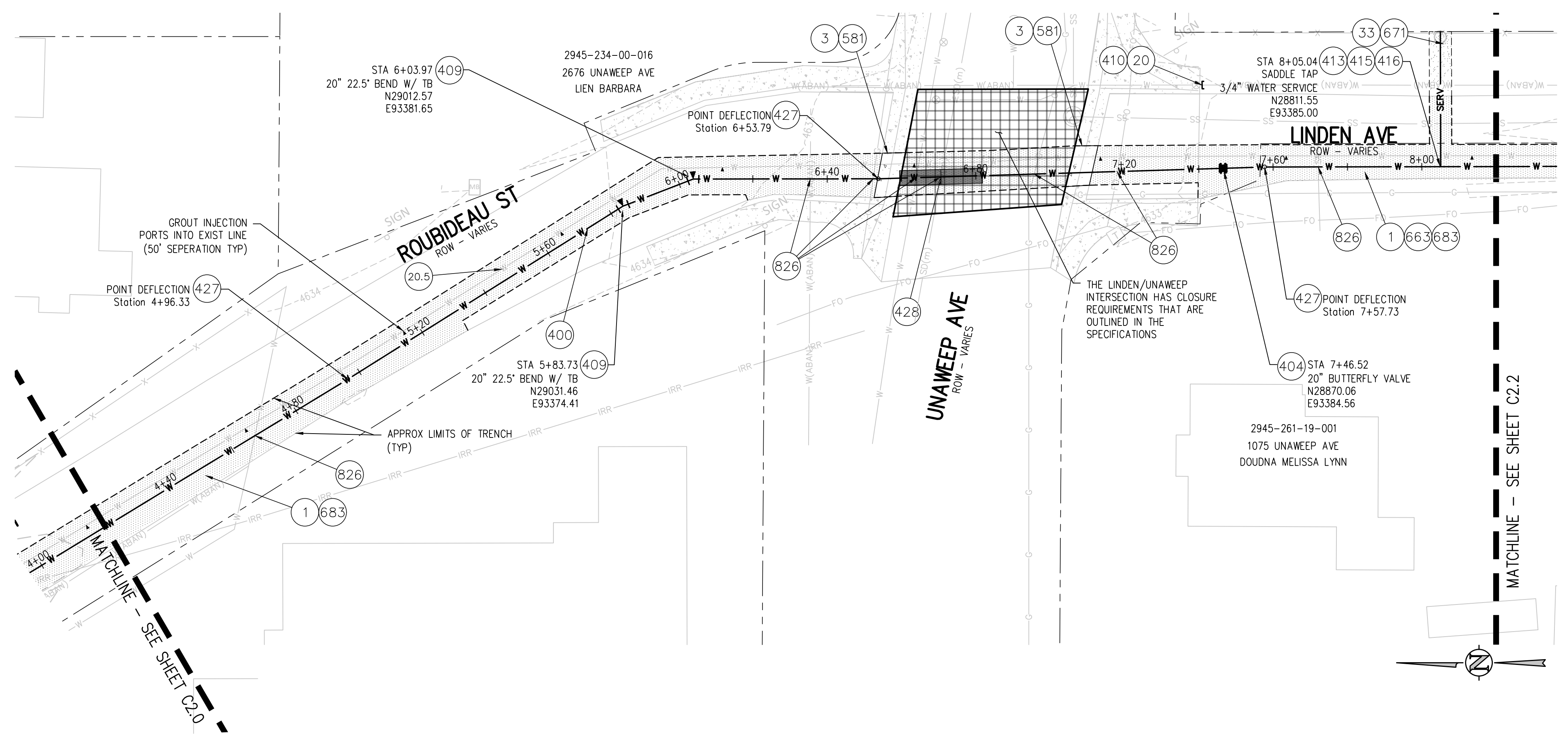


REVISION	DESCRIPTION	DATE

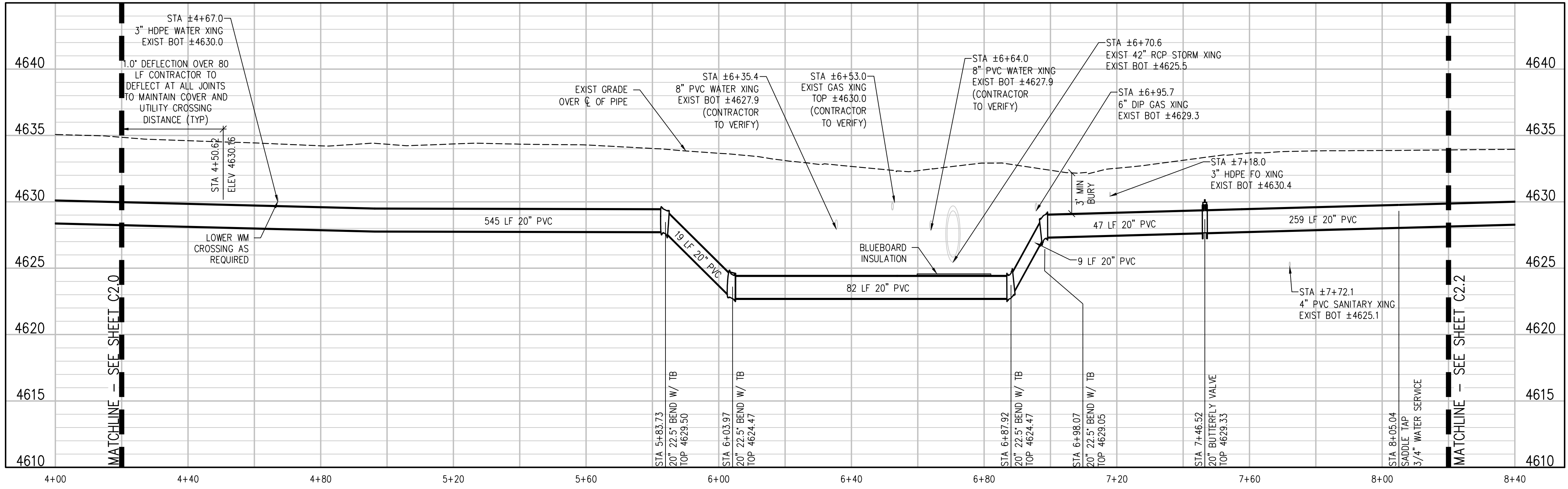
DRAWN BY	ZCF/NLM	DATE	
DESIGNED BY	ZCF/AMF	DATE	
CHECKED BY	JJM	DATE	
APPROVED BY		DATE	



LINDEN AVE TRANSMISSION LINE REPLACEMENT - PHASE 1
LINDEN AVE WATERLINE PLAN AND PROFILE



- CONSTRUCTION NOTES**
- 1 202 - REMOVAL OF ASPHALT MAT. CUT AND REMOVE ASPHALT AS SHOWN. (INDICATED BY DOT HATCH PATTERN)
 - 3 202 - REMOVAL OF CONCRETE. SAW CUT AND REMOVE CONCRETE AS SHOWN. (INDICATED BY CROSS HATCH PATTERN) INCLUDES BUT NOT LIMITED TO CURB, GUTTER, SIDEWALK, DRIVEWAY, SLABS, V-PAN, CURB RAMPS, INTERSECTION CORNERS, APRONS, AND LANDSCAPE BORDERS.
 - 20 202 - ABANDON PIPE. ABANDON BY PLUGGING REMAINING ENDS WITH CONCRETE.
 - 20.5 202 - ABANDON PIPE. ABANDON BY PLUGGING REMAINING ENDS WITH CONCRETE. GROUT INJECT EXIST PIPE AT 50' INTERVALS
 - 33 REMOVAL OF EXISTING GRAVEL. STOCKPILE PER PROPERTY OWNERS RECOMMENDATION
 - 400 102.7/108.2 - WATER MAIN PIPE (C-900 PVC) (SIZE AS SHOWN). INCLUDES TYPE A BEDDING AND HAUNCHING MATERIAL AND BACKFILL OF TRENCH WITH NATIVE MATERIALS MEETING 103.16 EARTH BACKFILL MATERIAL.
 - 404 102.8E/108.3 - BUTTERFLY VALVE (SIZE AS SHOWN).
 - 409 102.8/108.3 - ELBOW (SIZE AND ANGLE AS SHOWN)
 - 410 102.8/108.3 - END CAP / PLUG (SIZE AS SHOWN).
 - 413 102.7C/108.4 - WATER SERVICE LINE (TYPE K COPPER) (SIZE AS SHOWN ON PLAN)
 - 415 102.8K/108.4 - TAPPING SADDLE (SIZE AS SHOWN ON PLAN)
 - 416 102.8J/108.4 - CORPORATION STOP (SIZE AS SHOWN ON PLAN)
 - 427 DEFLECT PIPE AS SHOWN.
 - 428 02510 - BLUEBOARD INSULATION 10' ON EITHER SIDE OF CROSSING.
 - 581 608.06 - CONCRETE DRAINAGE PAN (6' WIDE)
 - 663 304 - AGGREGATE BASE COURSE (CLASS 6) (6" THICK)
 - 671 304 - WASHED ROCK SURFACE COURSE FOR GRAVEL DRIVEWAYS. MATCH EXISTING TYPE. THICKNESS IS 2" MIN. AND 3" MAX.
 - 683 401.08 - HOT BITUMINOUS PAVEMENT (PATCHING) (6" THICK) (GRADING SX, BINDER GRADE PG 64-22) (THREE 2" LIFTS)
 - 826 PROTECT EXISTING UTILITY LINE IN PLACE.

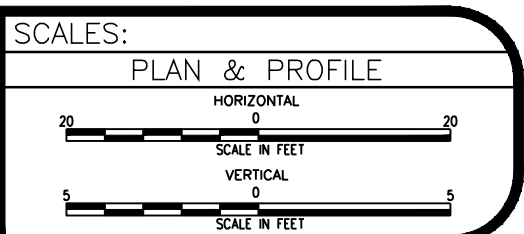


GROUT INJECTION NOTES:

1. THE GROUT INJECTION PORT LOCATIONS ARE APPROXIMATE.
2. CONTRACTOR TO SUBMIT GROUT INJECTION PLAN TO CITY FOR REVIEW AND APPROVAL. AT A MINIMUM THE PLAN SHOULD INCLUDE
 - APPROXIMATE SPACING AND LOCATIONS
 - MATERIAL SPECIFICATIONS
 - SCHEDULE AND GROUTING PLAN
 - SUBCONTRACTOR INFORMATION

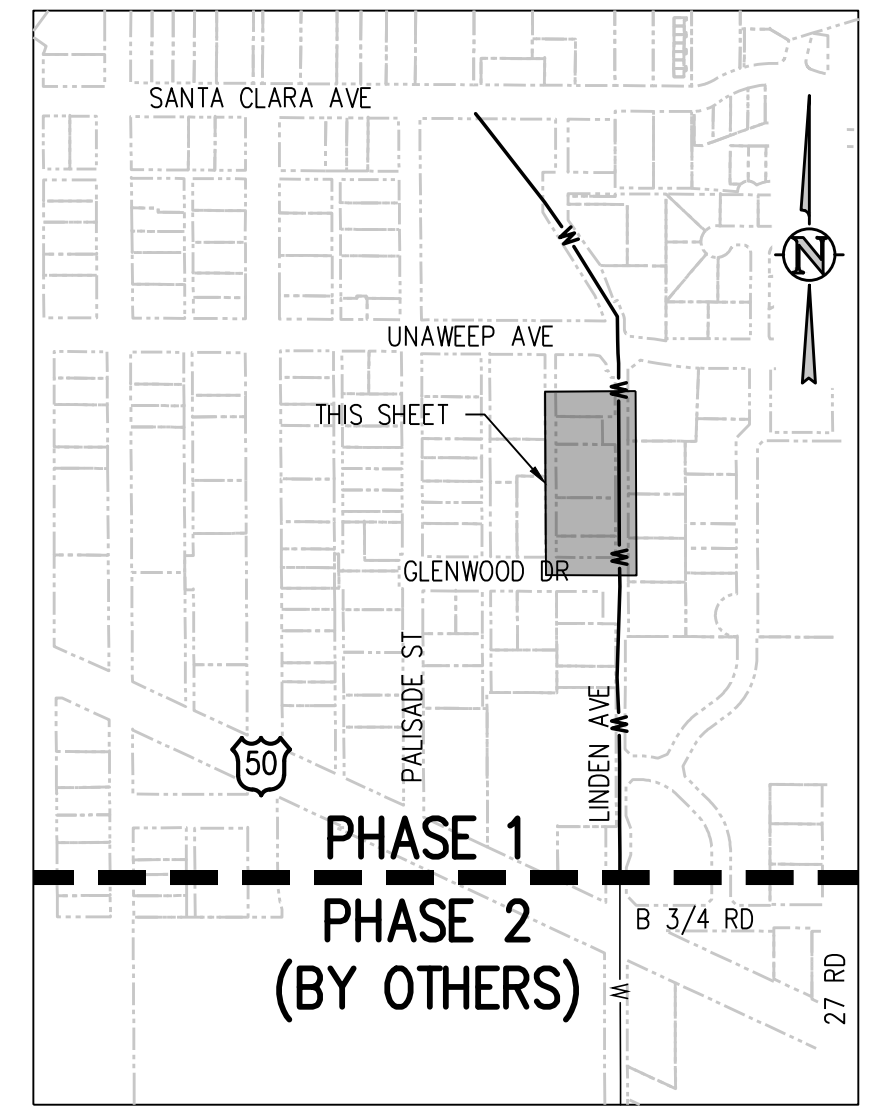
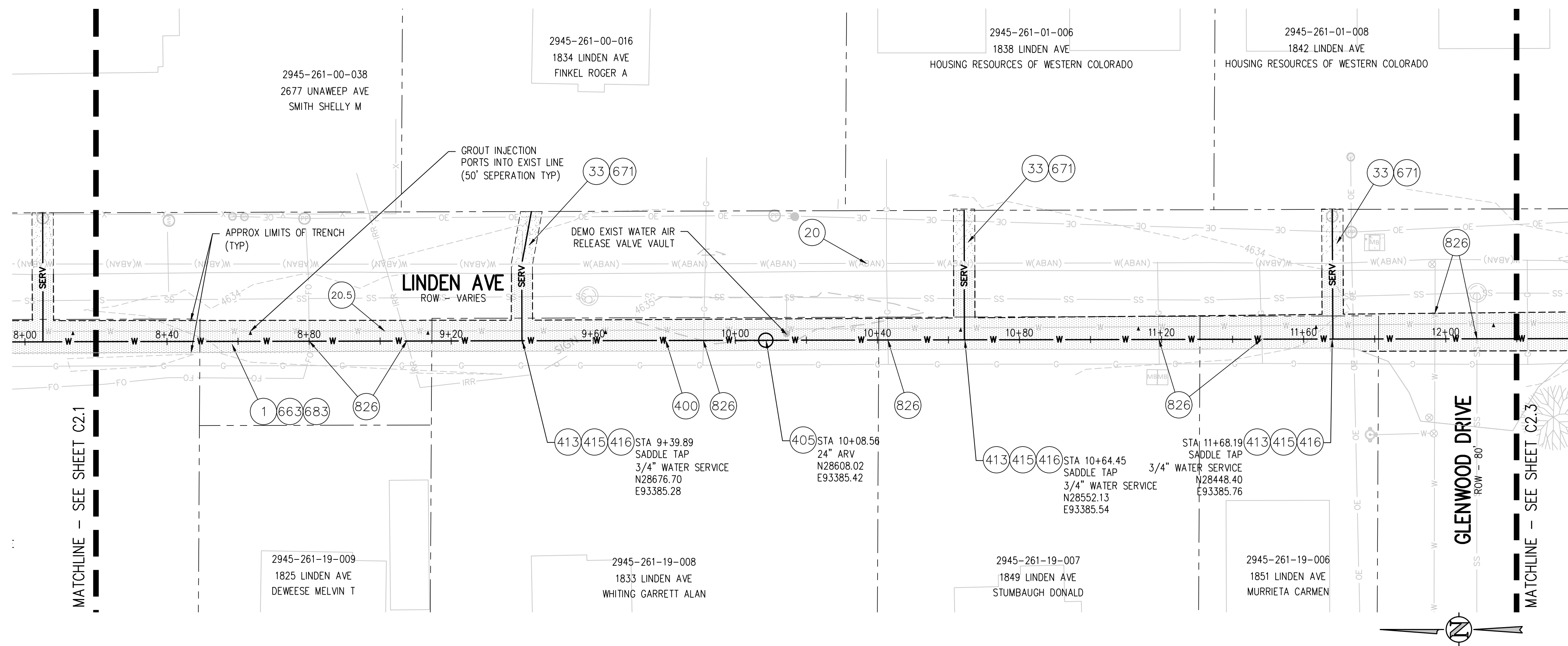
REVISION	DESCRIPTION	DATE

DRAWN BY ZCF/NLM DATE _____
 DESIGNED BY ZCF/AMF DATE _____
 CHECKED BY JJM DATE _____
 APPROVED BY _____ DATE _____



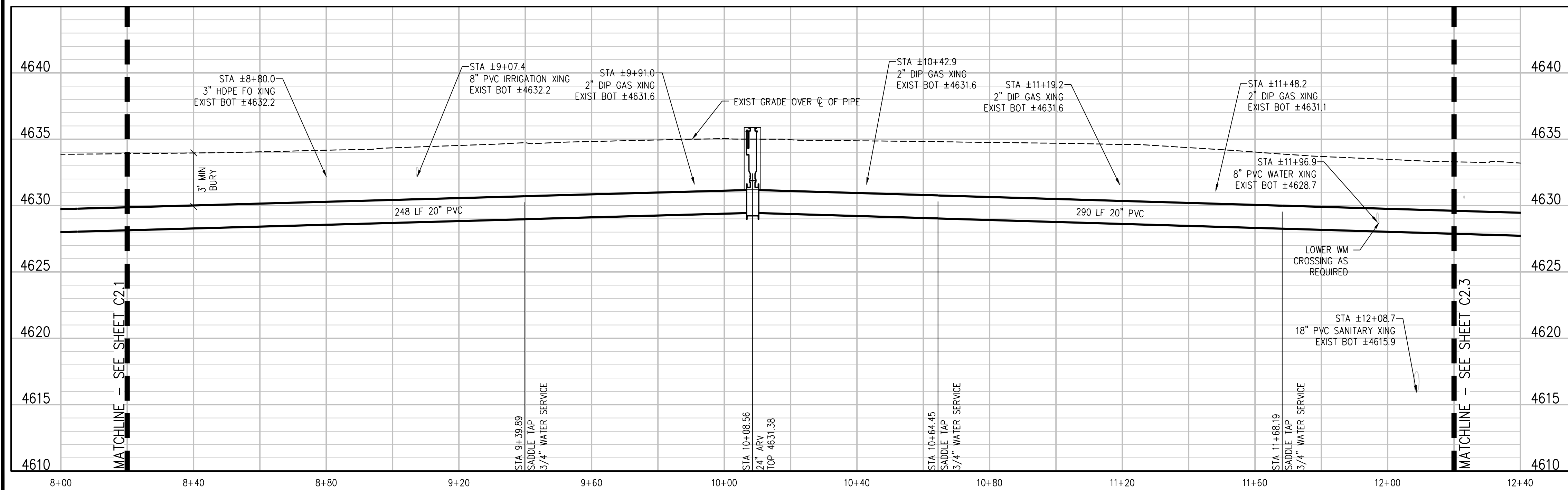
**LINDEN AVE TRANSMISSION LINE
 REPLACEMENT – PHASE 1
 LINDEN AVE WATERLINE PLAN AND PROFILE**

C2.1



CONSTRUCTION NOTES

- 1 202 - REMOVAL OF ASPHALT MAT. CUT AND REMOVE ASPHALT AS SHOWN. (INDICATED BY DOT HATCH PATTERN)
- 20 202 - ABANDON PIPE. ABANDON BY PLUGGING REMAINING ENDS WITH CONCRETE.
- 20.5 202 - ABANDON PIPE. ABANDON BY PLUGGING REMAINING ENDS WITH CONCRETE. GROUT INJECT EXIST PIPE AT 50' INTERVALS
- 33 REMOVAL OF EXISTING GRAVEL. STOCKPILE PER PROPERTY OWNERS RECOMMENDATION
- 400 102.7/108.2 - WATER MAIN PIPE (C-900 PVC) (SIZE AS SHOWN). INCLUDES TYPE A BEDDING AND HAUNCHING MATERIAL AND BACKFILL OF TRENCH WITH NATIVE MATERIALS MEETING 103.16 EARTH BACKFILL MATERIAL.
- 405 102.8G/102.8H/108.3 - AIR VALVE AND VAULT (SIZE AS SHOWN).
- 413 102.7C/108.4 - WATER SERVICE LINE (TYPE K COPPER) (SIZE AS SHOWN ON PLAN)
- 415 102.8K/108.4 - TAPPING SADDLE (SIZE AS SHOWN ON PLAN)
- 416 102.8J/108.4 - CORPORATION STOP (SIZE AS SHOWN ON PLAN)
- 663 304 - AGGREGATE BASE COURSE (CLASS 6) (6" THICK)
- 671 304 - WASHED ROCK SURFACE COURSE FOR GRAVEL DRIVEWAYS. MATCH EXISTING TYPE. THICKNESS IS 2" MIN. AND 3" MAX.
- 683 401.08 - HOT BITUMINOUS PAVEMENT (PATCHING) (6" THICK) (GRADING SX, BINDER GRADE PG 64-22) (THREE 2" LIFTS)
- 826 PROTECT EXISTING UTILITY LINE IN PLACE.

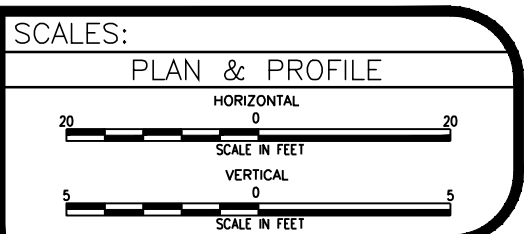


GROUT INJECTION NOTES:

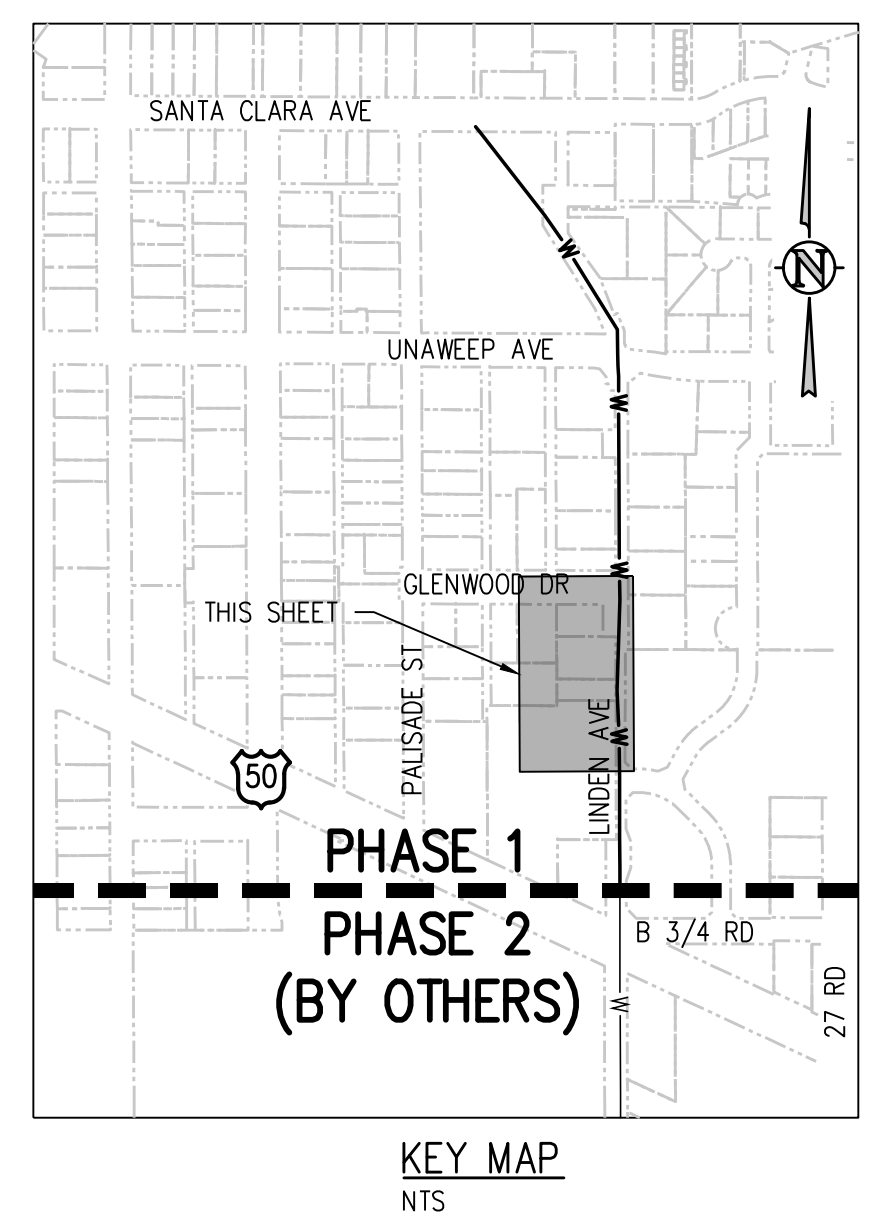
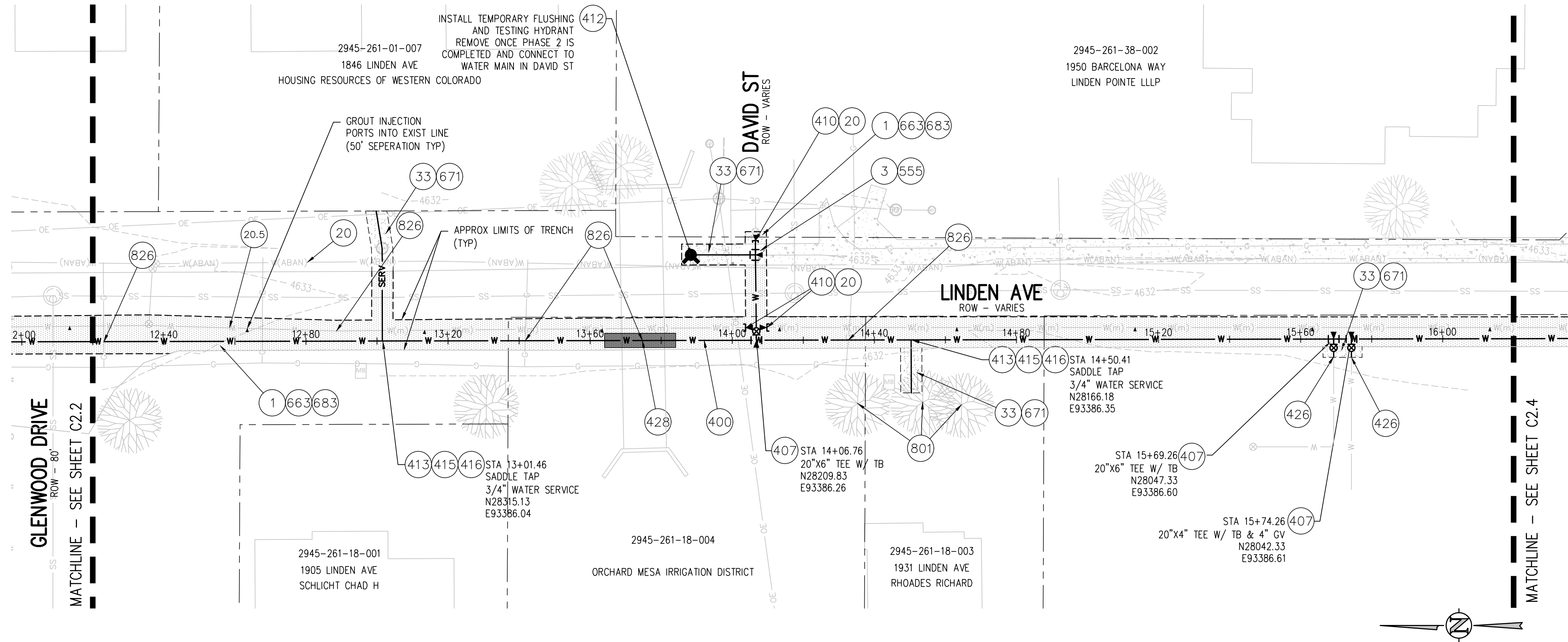
- THE GROUT INJECTION PORT LOCATIONS ARE APPROXIMATE.
- CONTRACTOR TO SUBMIT GROUT INJECTION PLAN TO CITY FOR REVIEW AND APPROVAL. AT A MINIMUM THE PLAN SHOULD INCLUDE
 - APPROXIMATE SPACING AND LOCATIONS
 - MATERIAL SPECIFICATIONS
 - SCHEDULE AND GROUTING PLAN
 - SUBCONTRACTOR INFORMATION

REVISION	DESCRIPTION	DATE

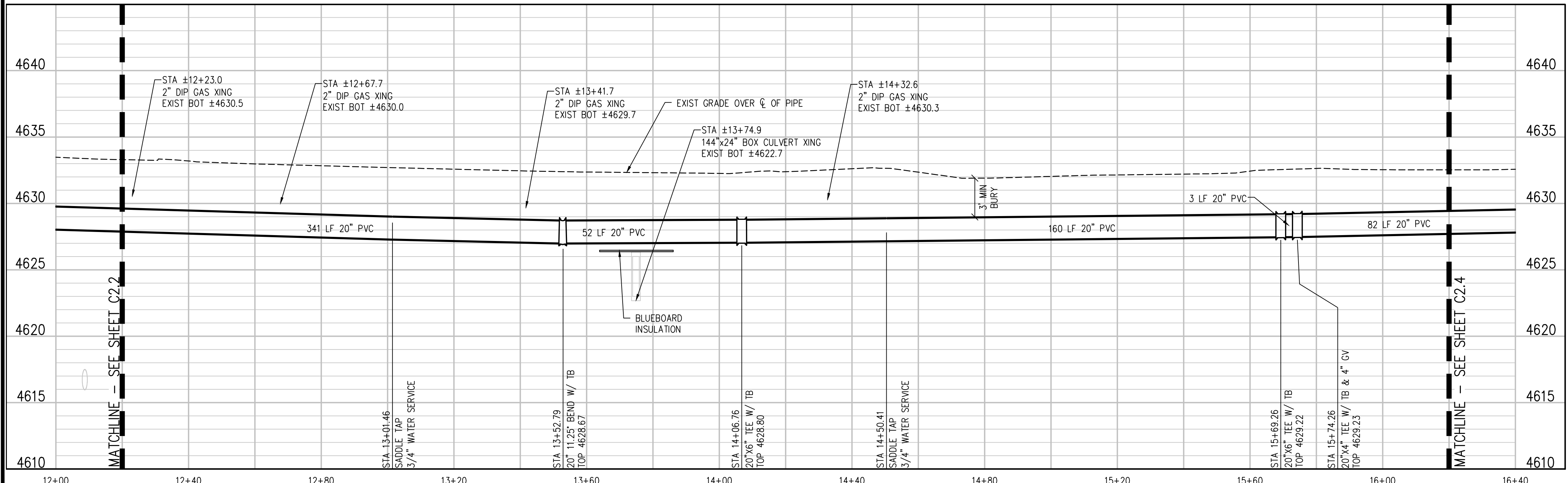
DRAWN BY ZCF/NLM DATE _____
 DESIGNED BY ZCF/AMF DATE _____
 CHECKED BY JJM DATE _____
 APPROVED BY _____ DATE _____



**LINDEN AVE TRANSMISSION LINE
 REPLACEMENT - PHASE 1
 LINDEN AVE WATERLINE PLAN AND PROFILE**



- CONSTRUCTION NOTES**
- 1 202 - REMOVAL OF ASPHALT MAT. CUT AND REMOVE ASPHALT AS SHOWN. (INDICATED BY DOT HATCH PATTERN)
 - 202 - REMOVAL OF CONCRETE. SAW CUT AND REMOVE CONCRETE AS SHOWN. (INDICATED BY CROSS HATCH PATTERN) INCLUDES BUT NOT LIMITED TO CURB, GUTTER, SIDEWALK, DRIVEWAY, SLABS, V-PAN, CURB RAMPS, INTERSECTION CORNERS, APRONS, AND LANDSCAPE BORDERS.
 - 20 202 - ABANDON PIPE. ABANDON BY PLUGGING REMAINING ENDS WITH CONCRETE.
 - 20.5 202 - ABANDON PIPE. ABANDON BY PLUGGING REMAINING ENDS WITH CONCRETE. GROUT INJECT EXIST PIPE AT 50' INTERVALS
 - 33 REMOVAL OF EXISTING GRAVEL. STOCKPILE PER PROPERTY OWNERS RECOMMENDATION
 - 400 102.7/108.2 - WATER MAIN PIPE (C-900 PVC) (SIZE AS SHOWN). INCLUDES TYPE A BEDDING AND HAUNCHING MATERIAL AND BACKFILL OF TRENCH WITH NATIVE MATERIALS MEETING 103.16 EARTH BACKFILL MATERIAL.
 - 410 102.8/108.3 - END CAP / PLUG (SIZE AS SHOWN).
 - 412 102.8A/108.3 - FIRE HYDRANT
 - 413 102.7C/108.4 - WATER SERVICE LINE (TYPE K COPPER) (SIZE AS SHOWN ON PLAN)
 - 415 102.8K/108.4 - TAPPING SADDLE (SIZE AS SHOWN ON PLAN)
 - 416 102.8J/108.4 - CORPORATION STOP (SIZE AS SHOWN ON PLAN)
 - 426 CONNECT TO EXISTING WATER PIPE/VALVE/FITTING. THE CONTRACT UNIT PRICE FOR WATER PIPE SHALL INCLUDE THE COST OF CONNECTION TO EXISTING PIPELINE
 - 428 02510 - BLUEBOARD INSULATION 10' ON EITHER SIDE OF CROSSING.
 - 663 304 - AGGREGATE BASE COURSE (CLASS 6) (6" THICK)
 - 671 304 - WASHED ROCK SURFACE COURSE FOR GRAVEL DRIVEWAYS. MATCH EXISTING TYPE. THICKNESS IS 2" MIN. AND 3" MAX.
 - 683 401.08 - HOT BITUMINOUS PAVEMENT (PATCHING) (6" THICK) (GRADING SX, BINDER GRADE PG 64-22) (THREE 2" LIFTS)
 - 801 PROTECT TREE.
 - 826 PROTECT EXISTING UTILITY LINE IN PLACE.



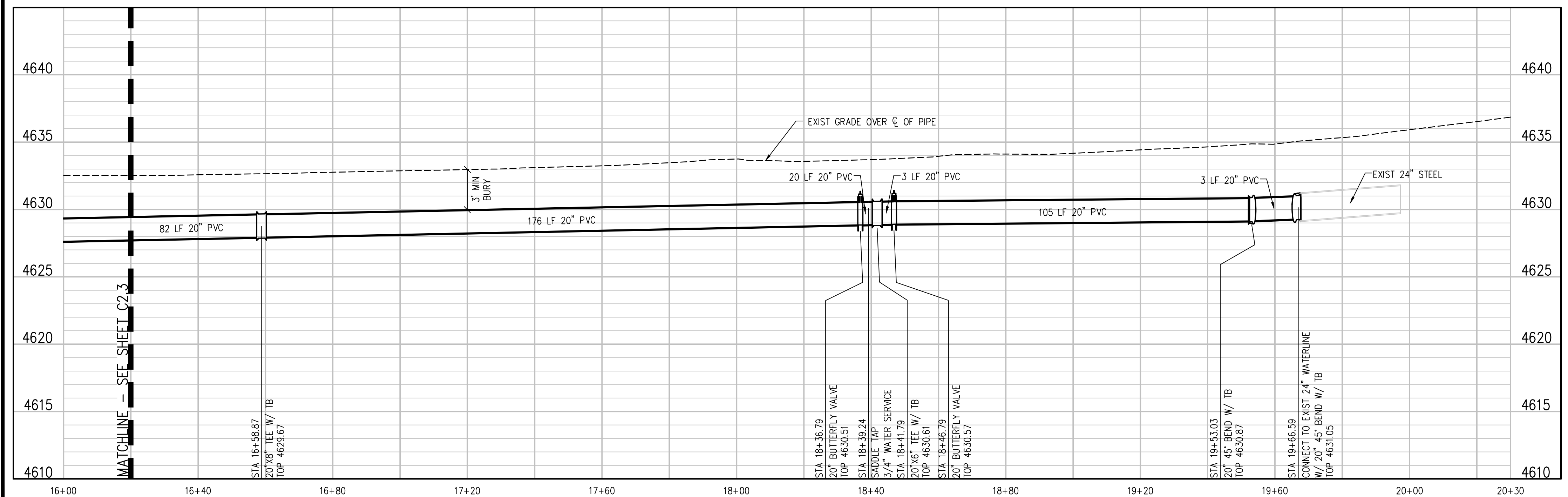
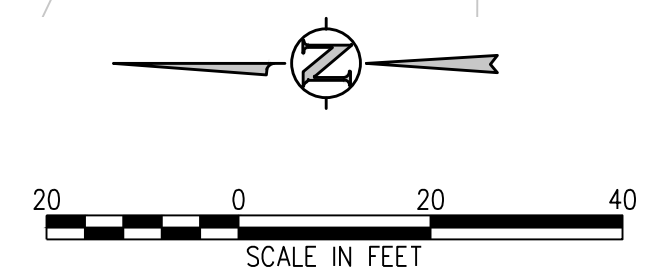
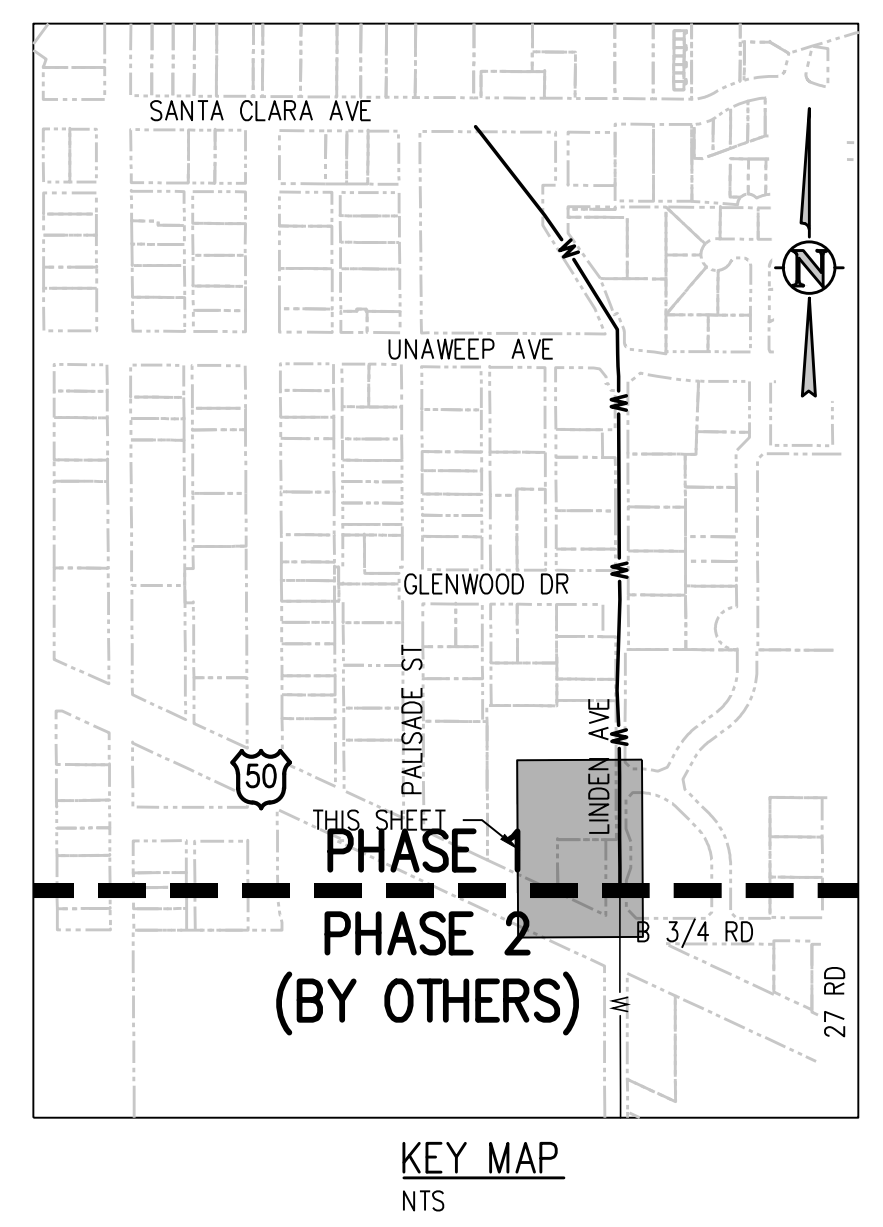
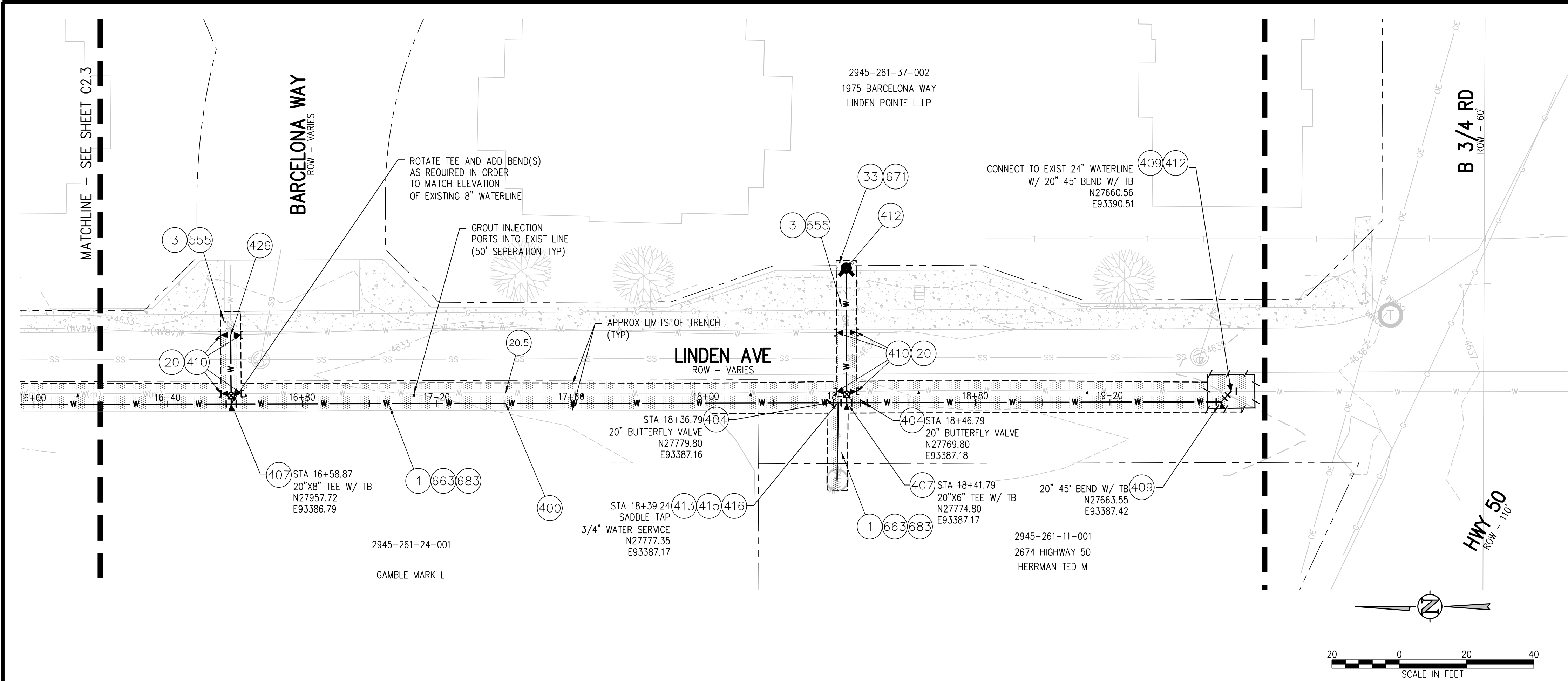
- GROUT INJECTION NOTES:**
1. THE GROUT INJECTION PORT LOCATIONS ARE APPROXIMATE.
 2. CONTRACTOR TO SUBMIT GROUT INJECTION PLAN TO CITY FOR REVIEW AND APPROVAL. AT A MINIMUM THE PLAN SHOULD INCLUDE:
 - APPROXIMATE SPACING AND LOCATIONS
 - MATERIAL SPECIFICATIONS
 - SCHEDULE AND GROUTING PLAN
 - SUBCONTRACTOR INFORMATION

REVISION	DESCRIPTION	DATE	DRAWN BY	DATE	DESIGNED BY	DATE	CHECKED BY	DATE	APPROVED BY	DATE
			ZCF/NLM		ZCF/AMF		JJM			

SCALES:
 PLAN & PROFILE
 HORIZONTAL: 1" = 40'
 VERTICAL: 1" = 10'

City of Grand Junction
 CONSULTING ENGINEERS
 JVA, Inc.
 817 Colorado Avenue, Suite 301
 Glenwood Springs, CO 81601
 970.404.3100
 www.jvajva.com
 Boulder • Fort Collins • Winter Park
 Glenwood Springs • Denver

LINDEN AVE TRANSMISSION LINE REPLACEMENT – PHASE 1
LINDEN AVE WATERLINE PLAN AND PROFILE
 C2.3



CONSTRUCTION NOTES

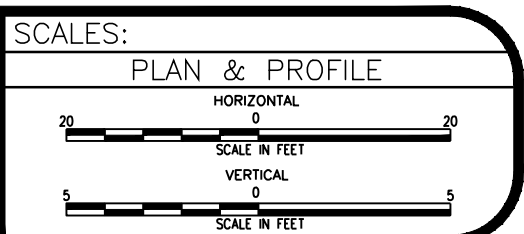
- 1 202 - REMOVAL OF ASPHALT MAT. CUT AND REMOVE ASPHALT AS SHOWN. (INDICATED BY DOT HATCH PATTERN)
- 3 202 - REMOVAL OF CONCRETE. SAW CUT AND REMOVE CONCRETE AS SHOWN. (INDICATED BY CROSS HATCH PATTERN) INCLUDES BUT NOT LIMITED TO CURB, GUTTER, SIDEWALK, DRIVEWAY, SLABS, V-PAN, CURB RAMPS, INTERSECTION CORNERS, APRONS, AND LANDSCAPE BORDERS.
- 20 202 - ABANDON PIPE. ABANDON BY PLUGGING REMAINING ENDS WITH CONCRETE.
- 20.5 202 - ABANDON PIPE. ABANDON BY PLUGGING REMAINING ENDS WITH CONCRETE. GROUT INJECT EXIST PIPE AT 50' INTERVALS
- 33 REMOVAL OF EXISTING GRAVEL. STOCKPILE PER PROPERTY OWNERS RECOMMENDATION
- 400 202.7/108.2 - WATER MAIN PIPE (C-900 PVC) (SIZE AS SHOWN). INCLUDES TYPE A BEDDING AND HAUNCHING MATERIAL AND BACKFILL OF TRENCH WITH NATIVE MATERIALS MEETING 103.16 EARTH BACKFILL MATERIAL.
- 404 102.8E/108.3 - BUTTERFLY VALVE (SIZE AS SHOWN).
- 410 102.8/108.3 - END CAP / PLUG (SIZE AS SHOWN).
- 412 102.8A/108.3 - FIRE HYDRANT
- 413 102.7C/108.4 - WATER SERVICE LINE (TYPE K COPPER) (SIZE AS SHOWN ON PLAN)
- 415 102.8K/108.4 - TAPPING SADDLE (SIZE AS SHOWN ON PLAN)
- 416 102.8J/108.4 - CORPORATION STOP (SIZE AS SHOWN ON PLAN)
- 426 CONNECT TO EXISTING WATER PIPE/VALVE/FITTING. THE CONTRACT UNIT PRICE FOR WATER PIPE SHALL INCLUDE THE COST OF CONNECTION TO EXISTING PIPELINE
- 663 304 - AGGREGATE BASE COURSE (CLASS 6) (6" THICK)
- 671 304 - WASHED ROCK SURFACE COURSE FOR GRAVEL DRIVEWAYS. MATCH EXISTING TYPE. THICKNESS IS 2" MIN. AND 3" MAX.
- 683 401.08 - HOT BITUMINOUS PAVEMENT (PATCHING) (6" THICK) (GRADING SX, BINDER GRADE PG 64-22) (THREE 2" LIFTS)
- 826 PROTECT EXISTING UTILITY LINE IN PLACE.

GROUT INJECTION NOTES:

1. THE GROUT INJECTION PORT LOCATIONS ARE APPROXIMATE.
2. CONTRACTOR TO SUBMIT GROUT INJECTION PLAN TO CITY FOR REVIEW AND APPROVAL. AT A MINIMUM THE PLAN SHOULD INCLUDE
 - APPROXIMATE SPACING AND LOCATIONS
 - MATERIAL SPECIFICATIONS
 - SCHEDULE AND GROUTING PLAN
 - SUBCONTRACTOR INFORMATION

REVISION	DESCRIPTION	DATE

DRAWN BY ZCF/NLM DATE _____
 DESIGNED BY ZCF/AMF DATE _____
 CHECKED BY JJM DATE _____
 APPROVED BY _____ DATE _____



LINDEN AVE TRANSMISSION LINE REPLACEMENT – PHASE 1
LINDEN AVE WATERLINE PLAN AND PROFILE