

IRRIGATION FACILITIES UTILITY CONFLICT RESOLUTION MATRIX

FACILITY OWNER	ID	IRR STA	TYPE	SIZE & MATERIAL	DESCRIPTION	QL	TEST HOLE	RECOMMENDED ACTION OR RESOLUTION	ESTIMATED RESOLUTION DATE	RESOLUTION STATUS
CITY OF GRAND JUNCTION	C1	17+47	SAN	8" PVC	EX SANITARY	D		PROTECT IN PLACE		
CITY OF GRAND JUNCTION	C2	17+66	W	8" AC	EX WATER	D		PROTECT IN PLACE		
CITY OF GRAND JUNCTION	C3	17+73	W	8" PVC	PR WATER			NO CONFLICT PER PLAN		
XCEL & CENTURY LINK	C4	17+96	E, FO	3Φ PRIMARY	EX ELEC, EX FIBER	D		PROTECT IN PLACE		
PRIVATE	C5	21+12	STM	8" PVC	EX STORM	D		PROTECT IN PLACE		
CITY OF GRAND JUNCTION	C6	21+19	W	8" AC	ABANDONED	D		PROTECT IN PLACE		
PRIVATE	C7	22+10	IRR	12" RCP	EX IRRIGATION	D		REMOVE		
CITY OF GRAND JUNCTION	C8	22+11	STM	54" RCP	EX STORM	D		PROTECT IN PLACE		
CITY OF GRAND JUNCTION	C9	22+24	STM	24" RCP	EX STORM	D		PROTECT IN PLACE		
PRIVATE	C10		SAN	SAN. SERVICE	EX SANITARY	D		PROTECT IN PLACE		
CITY OF GRAND JUNCTION	C11	24+41	W	3/4" SERVICE	EX WATER	D		RESET		
CITY OF GRAND JUNCTION	C12	26+64	W	8" PVC	PR WATER			OFFSET BELOW IRR		
XCEL	C13	26+72	E, G	1Φ PRIMARY, 4"	EX ELEC, EX GAS	D		PROTECT IN PLACE		
CENTURY LINK	C14	27+18	FO		EX FIBER	D		PROTECT IN PLACE		
XCEL	C15	27+37	E	1Φ	EX ELEC	D		PROTECT IN PLACE		
CITY OF GRAND JUNCTION	C16	27+45	SAN	8" PVC	EX SANITARY	D		PROTECT IN PLACE		
XCEL	C17	27+53	E	1Φ	EX ELEC	D		PROTECT IN PLACE		

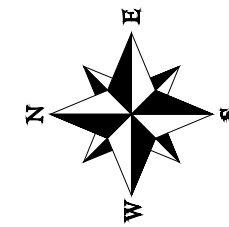
REVISION Δ	DESCRIPTION	DATE	DRAWN BY	HMC	DATE	2024
REVISION Δ			DESIGNED BY	WC	DATE	2024
REVISION Δ			CHECKED BY	WC	DATE	2024
REVISION Δ			APPROVED BY	WC	DATE	2024

SCALES:
NOT TO SCALE

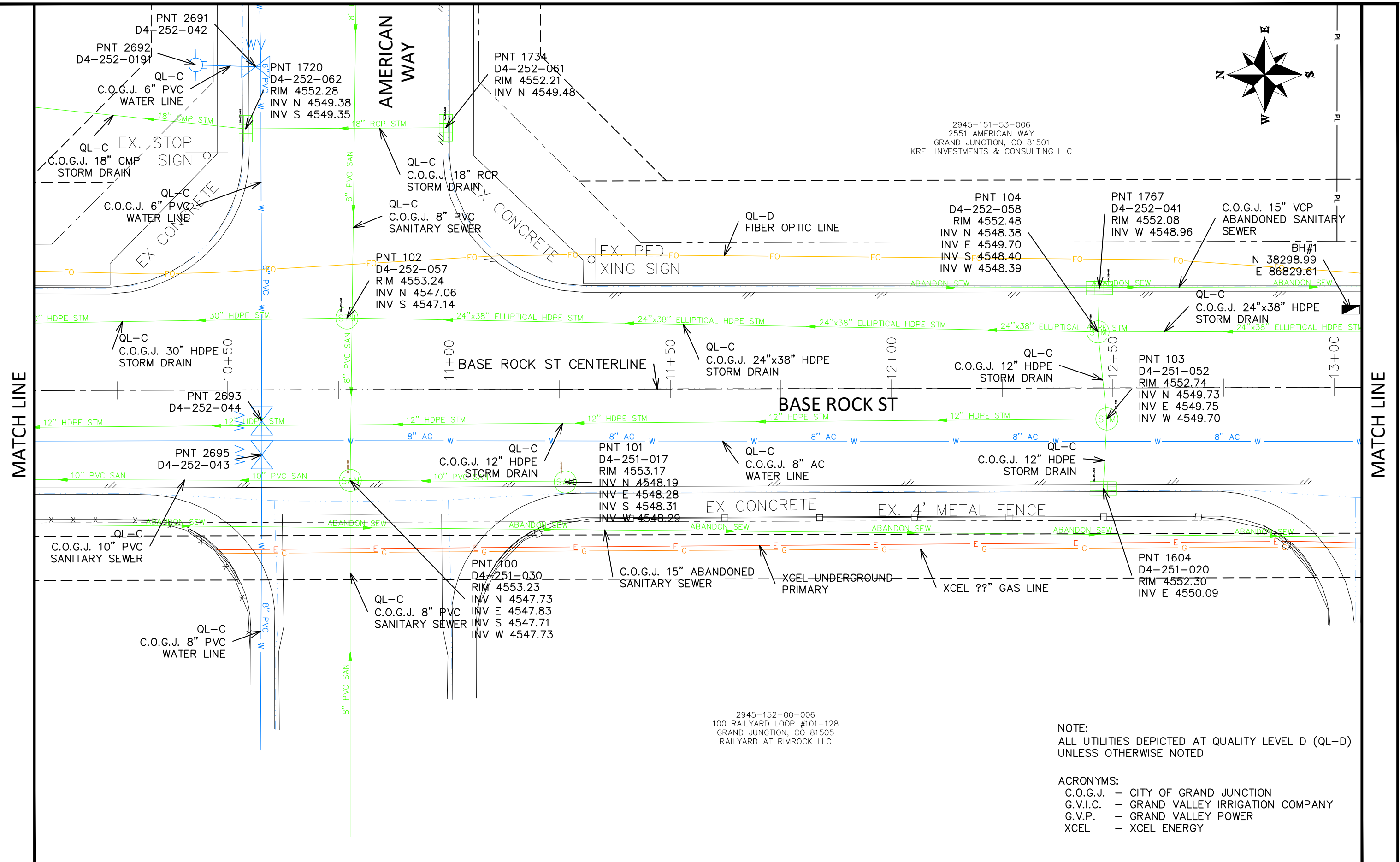


**PUBLIC WORKS
ENGINEERING DIVISION**
PROJECT NO. F0006-F000615

UTILITY CONFLICT RESOLUTION MATRIX



2945-151-53-006
2551 AMERICAN WAY
GRAND JUNCTION, CO 81501
KREL INVESTMENTS & CONSULTING LLC



PNT 104
D4-252-058
RIM 4552.48
INV N 4548.38
INV E 4549.70
INV S 4548.40
INV W 4548.39

PNT 1767
D4-252-041
RIM 4552.08
INV W 4548.96

C.O.G.J. 15" VCP
ABANDONED SANITARY
SEWER

BH#1
N 38298.99
E 86829.61

PNT 103
D4-251-052
RIM 4552.74
INV N 4549.73
INV E 4549.75
INV W 4549.70

PNT 101
D4-251-017
RIM 4553.17
INV N 4548.19
INV E 4548.28
INV S 4548.31
INV W 4548.29

PNT 1604
D4-251-020
RIM 4552.30
INV E 4550.09

PNT 100
D4-251-030
RIM 4553.23
INV N 4547.73
INV E 4547.83
INV S 4547.71
INV W 4547.73

2945-152-00-006
100 RAILYARD LOOP #101-128
GRAND JUNCTION, CO 81505
RAILYARD AT RIMROCK LLC

NOTE:
ALL UTILITIES DEPICTED AT QUALITY LEVEL D (QL-D)
UNLESS OTHERWISE NOTED

ACRONYMS:
C.O.G.J. - CITY OF GRAND JUNCTION
G.V.I.C. - GRAND VALLEY IRRIGATION COMPANY
G.V.P. - GRAND VALLEY POWER
XCEL - XCEL ENERGY

MATCH LINE

MATCH LINE

REVISION	DESCRIPTION	DATE	DRAWN BY	DATE	VALUE	SCALES:
REVISION			DJM	DATE	Value	PLAN HORIZONTAL: 1" = 20'
REVISION			DESIGNED BY	DATE	Value	
REVISION			CHECKED BY	DATE	Value	
REVISION			APPROVED BY	DATE	Value	



ENGINEERING AND
TRANSPORTATION DEPARTMENT
PROJECT NO. F210205

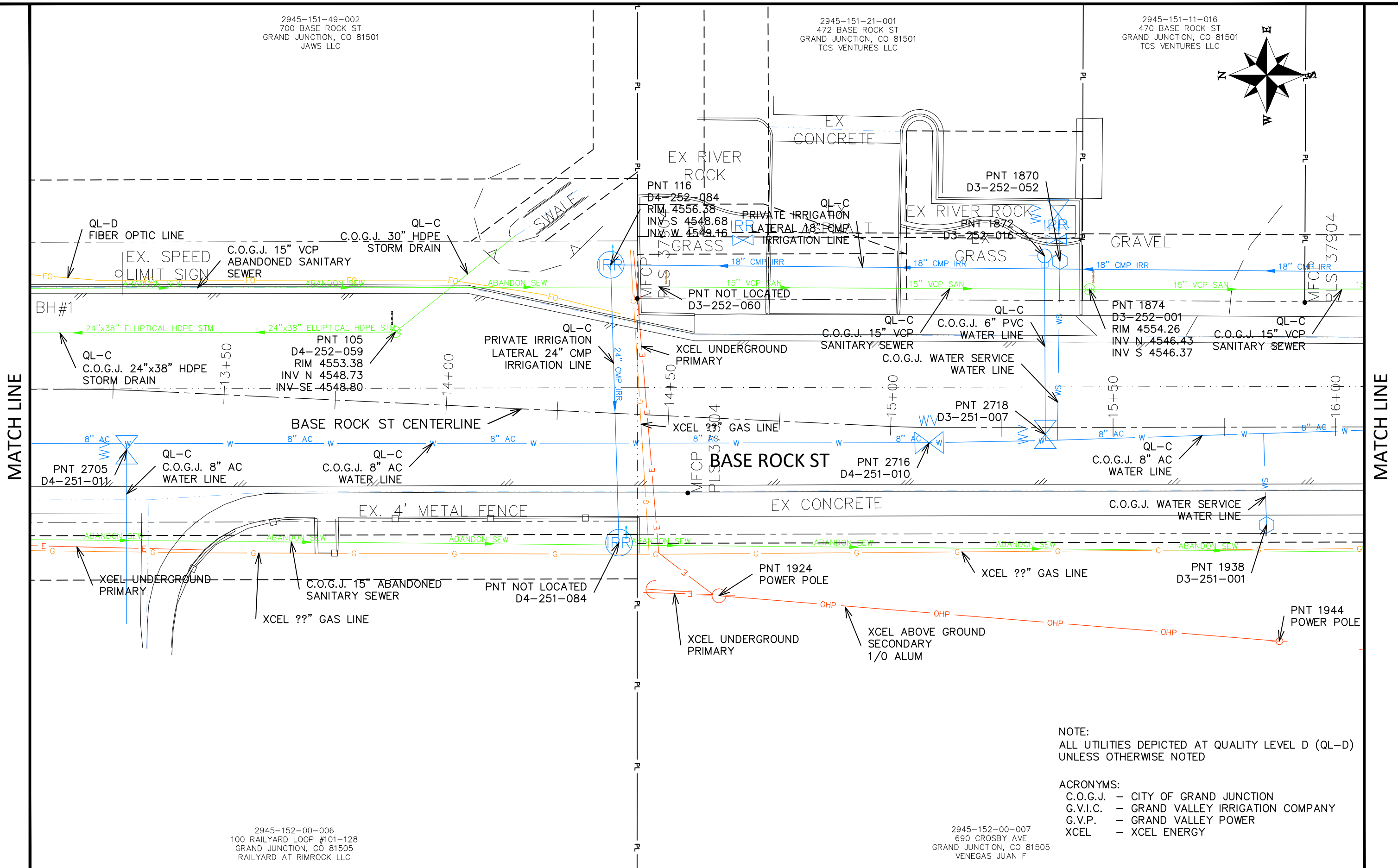
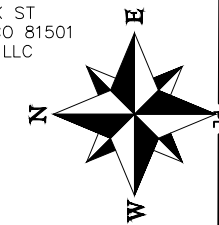
CROSBY AVE IMPROVEMENTS
S.U.E. PLAN - 01
October 11, 2024

N:\EngProj\F210205 (Crosby Ave Improvements)\60CAD\QDESIGN\Field Inspection Review (90%)\006 S.U.E. PLAN.dwg - PLOTTED 10/11/2024 4:10:33 PM

2945-151-49-002
700 BASE ROCK ST
GRAND JUNCTION, CO 81501
JAWS LLC

2945-151-21-001
472 BASE ROCK ST
GRAND JUNCTION, CO 81501
TCS VENTURES LLC

2945-151-11-016
470 BASE ROCK ST
GRAND JUNCTION, CO 81501
TCS VENTURES LLC



MATCH LINE

MATCH LINE

NOTE:
ALL UTILITIES DEPICTED AT QUALITY LEVEL D (QL-D)
UNLESS OTHERWISE NOTED

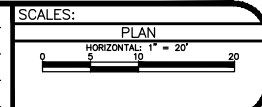
ACRONYMS:
C.O.G.J. - CITY OF GRAND JUNCTION
G.V.I.C. - GRAND VALLEY IRRIGATION COMPANY
G.V.P. - GRAND VALLEY POWER
XCEL - XCEL ENERGY

2945-152-00-006
100 RAILYARD LOOP #101-128
GRAND JUNCTION, CO 81505
RAILYARD AT RIMROCK LLC

2945-152-00-007
690 CROSBY AVE
GRAND JUNCTION, CO 81505
VENEGAS JUAN F

REVISION	DESCRIPTION	DATE

DRAWN BY	DJM	DATE	Value
DESIGNED BY	DJM	DATE	Value
CHECKED BY	WC	DATE	Value
APPROVED BY	WC	DATE	Value



ENGINEERING AND
TRANSPORTATION DEPARTMENT
PROJECT NO. F210205

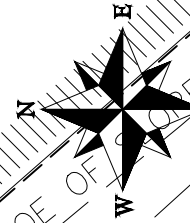
CROSBY AVE IMPROVEMENTS
S.U.E. PLAN - 02
October 11, 2024

N:\EngProj\F210205 (Crosby Ave Improvements)\60CAD\DESIGN\Field Inspection Review (90%)\006 S.U.E. PLAN.dwg - PLOTTED 10/11/2024 4:10:35 PM

2945-151-11-015
468 BASE ROCK ST
GRAND JUNCTION, CO 81501
TCS VENTURES LLC

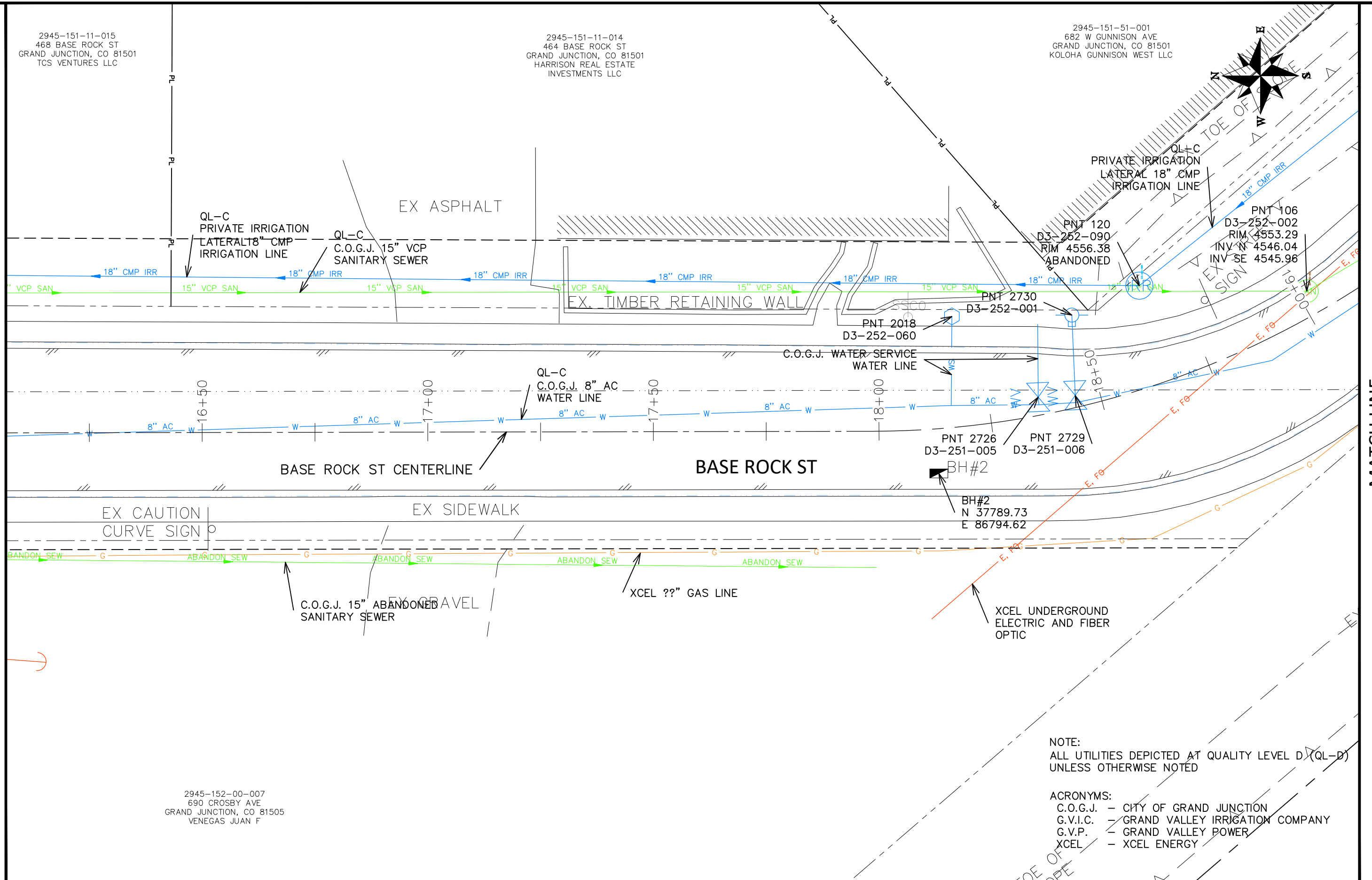
2945-151-11-014
464 BASE ROCK ST
GRAND JUNCTION, CO 81501
HARRISON REAL ESTATE
INVESTMENTS LLC

2945-151-51-001
682 W GUNNISON AVE
GRAND JUNCTION, CO 81501
KOLOHA GUNNISON WEST LLC



MATCH LINE

MATCH LINE

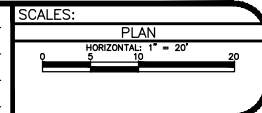


2945-152-00-007
690 CROSBY AVE
GRAND JUNCTION, CO 81505
VENEGAS JUAN F

NOTE:
ALL UTILITIES DEPICTED AT QUALITY LEVEL D (QL-D)
UNLESS OTHERWISE NOTED

ACRONYMS:
C.O.G.J. - CITY OF GRAND JUNCTION
G.V.I.C. - GRAND VALLEY IRRIGATION COMPANY
G.V.P. - GRAND VALLEY POWER
XCEL - XCEL ENERGY

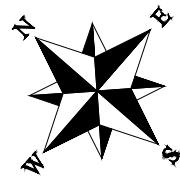
REVISION	DESCRIPTION	DATE	DRAWN BY	DATE	VALUE
REVISION			DJM		Value
REVISION			DJM		Value
REVISION			WC		Value
REVISION			WC		Value



ENGINEERING AND
TRANSPORTATION DEPARTMENT
PROJECT NO. F210205

CROSBY AVE IMPROVEMENTS
S.U.E. PLAN - 03
October 11, 2024

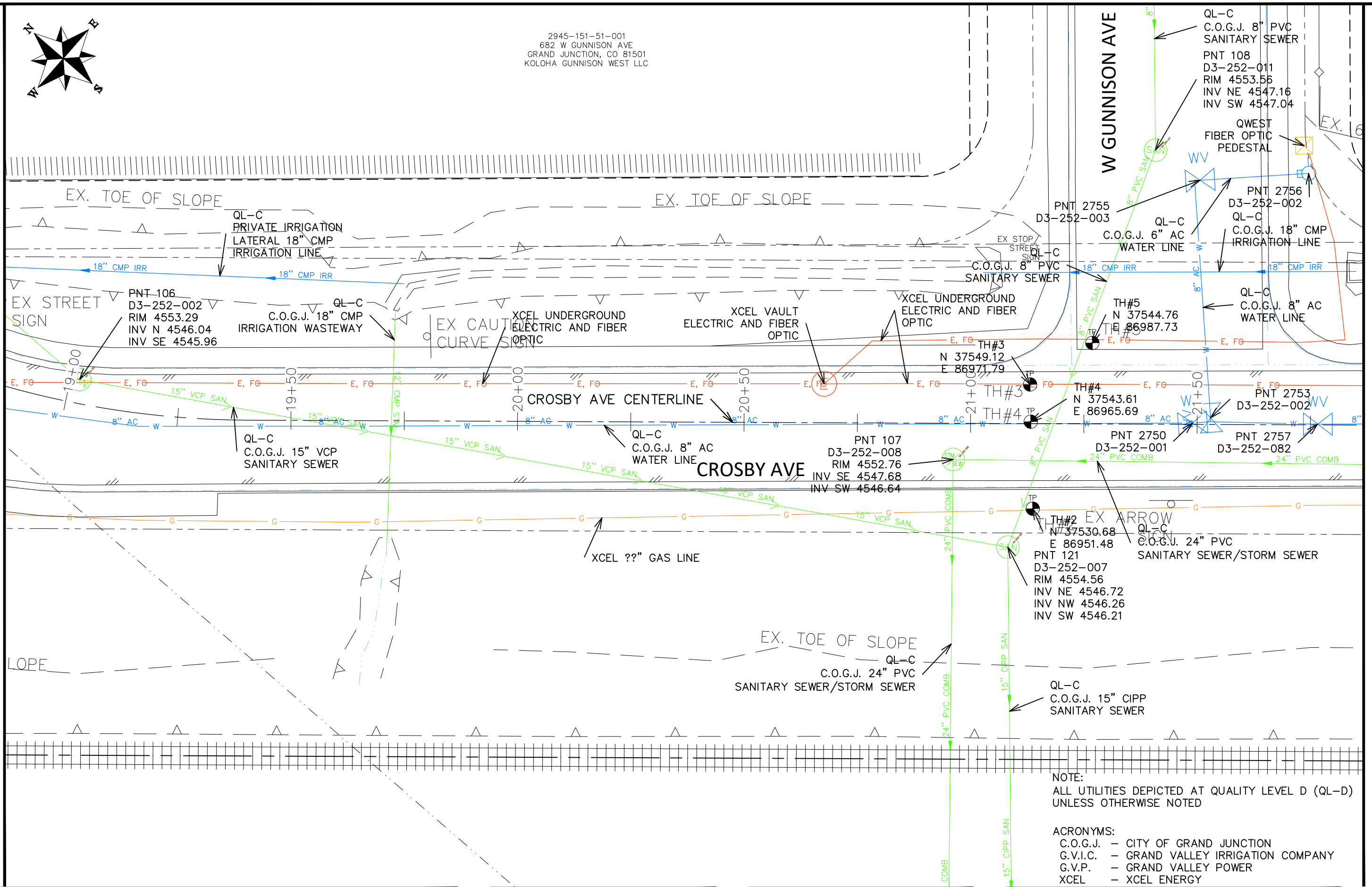
N:\EngProj\F210205 (Crosby Ave Improvements)\60CAD\DESIGN\Field Inspection Review (90%)\006 S.U.E. PLAN.dwg - PLOTTED 10/11/2024 4:10:40 PM



2945-151-51-001
682 W GUNNISON AVE
GRAND JUNCTION, CO 81501
KOLOHA GUNNISON WEST LLC

MATCH LINE

MATCH LINE

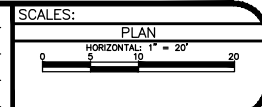


NOTE:
ALL UTILITIES DEPICTED AT QUALITY LEVEL D (QL-D)
UNLESS OTHERWISE NOTED

ACRONYMS:
C.O.G.J. - CITY OF GRAND JUNCTION
G.V.I.C. - GRAND VALLEY IRRIGATION COMPANY
G.V.P. - GRAND VALLEY POWER
XCEL - XCEL ENERGY

REVISION	DESCRIPTION	DATE

DRAWN BY	DATE	VALUE
DJM		
DESIGNED BY	DJM	
CHECKED BY	WC	
APPROVED BY	WC	



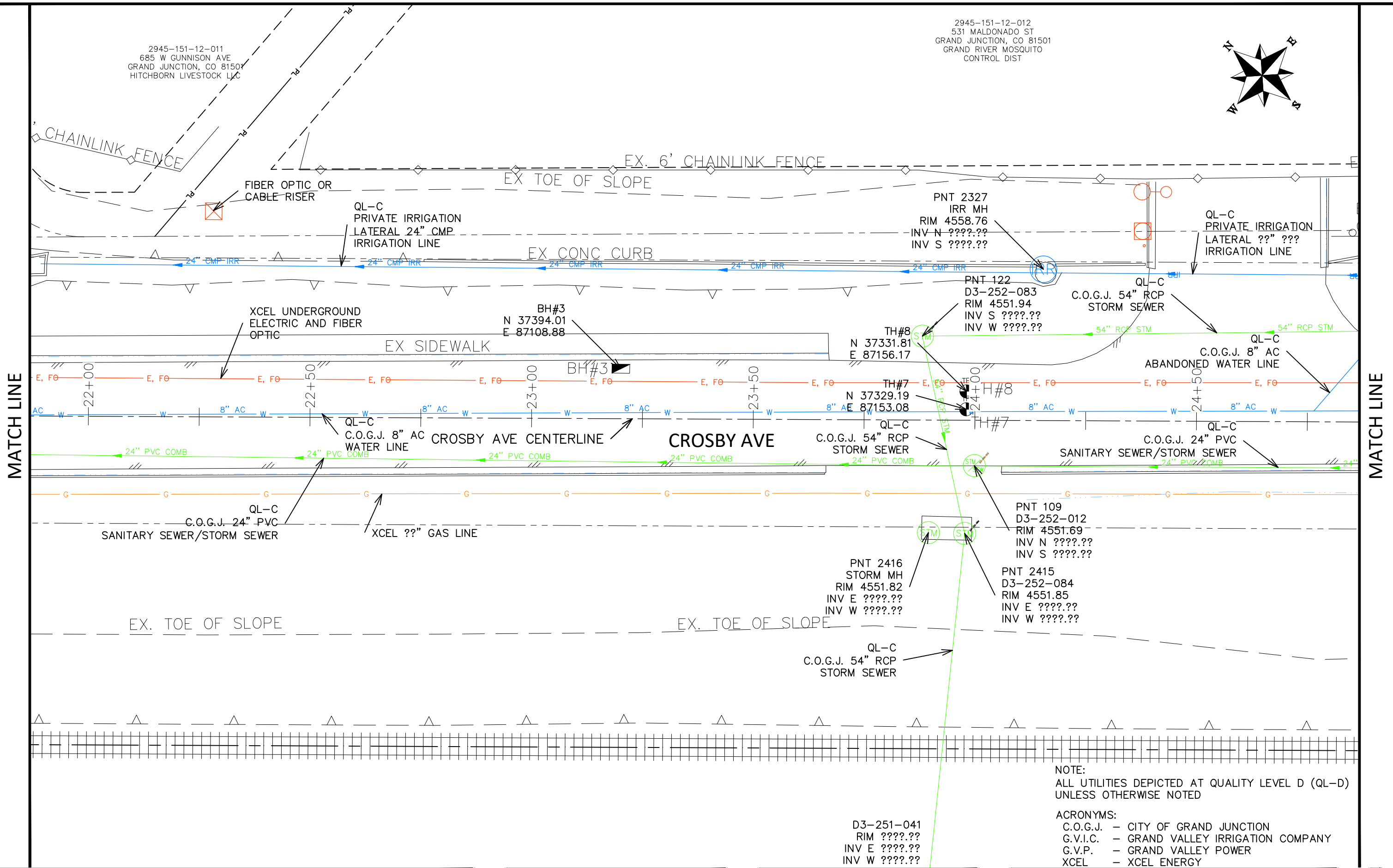
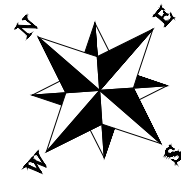
ENGINEERING AND
TRANSPORTATION DEPARTMENT
PROJECT NO. F210205

CROSBY AVE IMPROVEMENTS
S.U.E. PLAN - 04
October 11, 2024

N:\EngProj\F210205 (Crosby Ave Improvements)\60CAD\DESIGN\Field Inspection Review (90%)\006 S.U.E. PLAN.dwg - PLOTTED 10/11/2024 4:10:45 PM

2945-151-12-011
685 W GUNNISON AVE
GRAND JUNCTION, CO 81501
HITCHBORN LIVESTOCK LLC

2945-151-12-012
531 MALDONADO ST
GRAND JUNCTION, CO 81501
GRAND RIVER MOSQUITO
CONTROL DIST



MATCH LINE

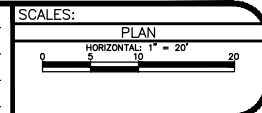
MATCH LINE

NOTE:
ALL UTILITIES DEPICTED AT QUALITY LEVEL D (QL-D)
UNLESS OTHERWISE NOTED

ACRONYMS:
C.O.G.J. - CITY OF GRAND JUNCTION
G.V.I.C. - GRAND VALLEY IRRIGATION COMPANY
G.V.P. - GRAND VALLEY POWER
XCEL - XCEL ENERGY

D3-251-041
RIM ???????
INV E ???????
INV W ???????

REVISION	DESCRIPTION	DATE	DRAWN BY	DATE	VALUE
REVISION			DJM		Value
REVISION			DJM		Value
REVISION			WC		Value
REVISION			WC		Value



ENGINEERING AND
TRANSPORTATION DEPARTMENT
PROJECT NO. F210205

CROSBY AVE IMPROVEMENTS
S.U.E. PLAN - 05
October 11, 2024

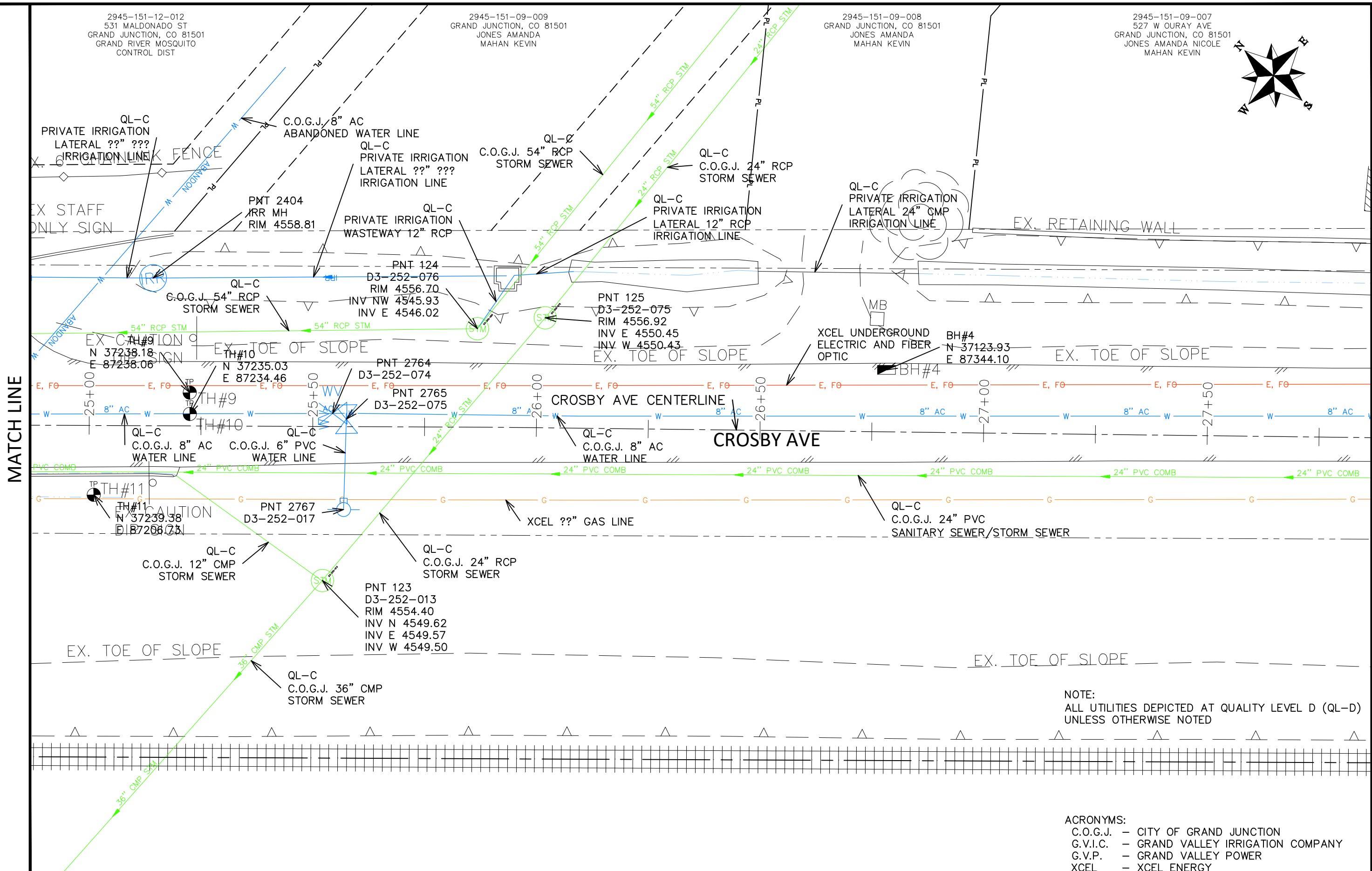
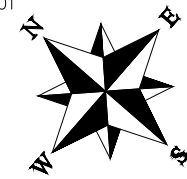
N:\EngProj\F210205 (Crosby Ave Improvements)\60CAD\DESIGN\Field Inspection Review (90%)\006 S.U.E. PLAN.dwg - PLOTTED 10/11/2024 4:10:50 PM

2945-151-12-012
531 MALDONADO ST
GRAND JUNCTION, CO 81501
GRAND RIVER MOSQUITO
CONTROL DIST

2945-151-09-009
GRAND JUNCTION, CO 81501
JONES AMANDA
MAHAN KEVIN

2945-151-09-008
GRAND JUNCTION, CO 81501
JONES AMANDA
MAHAN KEVIN

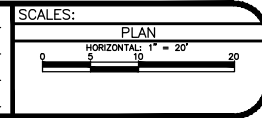
2945-151-09-007
527 W OURAY AVE
GRAND JUNCTION, CO 81501
JONES AMANDA NICOLE
MAHAN KEVIN



NOTE:
ALL UTILITIES DEPICTED AT QUALITY LEVEL D (QL-D)
UNLESS OTHERWISE NOTED

ACRONYMS:
C.O.G.J. - CITY OF GRAND JUNCTION
G.V.I.C. - GRAND VALLEY IRRIGATION COMPANY
G.V.P. - GRAND VALLEY POWER
XCEL - XCEL ENERGY

REVISION	DESCRIPTION	DATE	DRAWN BY	DATE	VALUE
REVISION			DESIGNED BY	DATE	VALUE
REVISION			CHECKED BY	DATE	VALUE
REVISION			APPROVED BY	DATE	VALUE



ENGINEERING AND
TRANSPORTATION DEPARTMENT
PROJECT NO. F210205

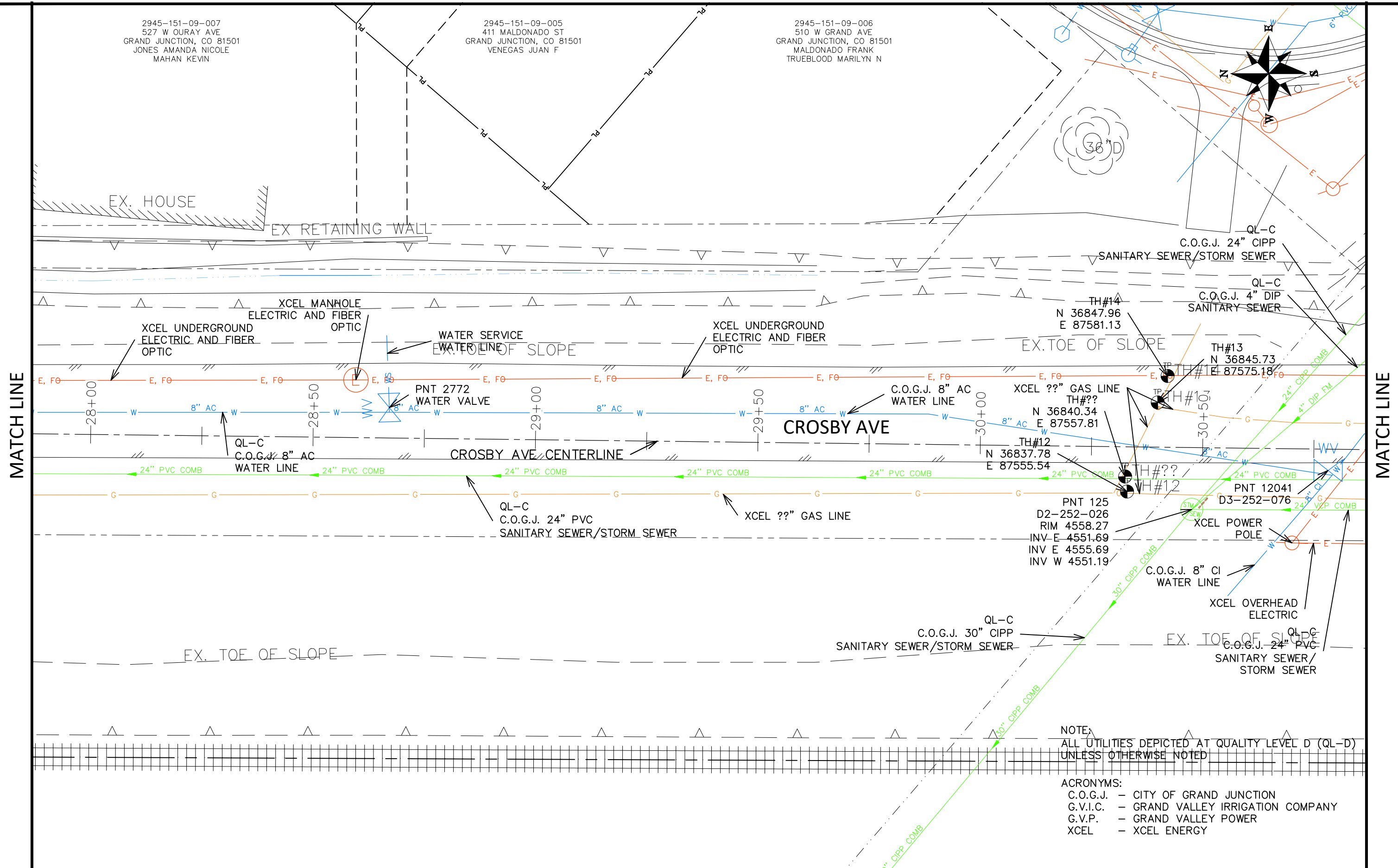
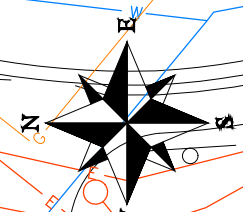
CROSBY AVE IMPROVEMENTS
S.U.E. PLAN - 06
October 11, 2024

N:\EngProj\F210205 (Crosby Ave Improvements)\60CAD\DESIGN\Field Inspection Review (90%)\06 S.U.E. PLAN.dwg - PLOTTED 10/11/2024 4:10:55 PM

2945-151-09-007
527 W OURAY AVE
GRAND JUNCTION, CO 81501
JONES AMANDA NICOLE
MAHAN KEVIN

2945-151-09-005
411 MALDONADO ST
GRAND JUNCTION, CO 81501
VENEGAS JUAN F

2945-151-09-006
510 W GRAND AVE
GRAND JUNCTION, CO 81501
MALDONADO FRANK
TRUEBLOOD MARILYN N

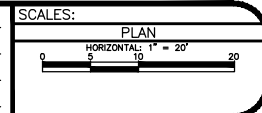


NOTE:
ALL UTILITIES DEPICTED AT QUALITY LEVEL D (QL-D)
UNLESS OTHERWISE NOTED

ACRONYMS:
C.O.G.J. - CITY OF GRAND JUNCTION
G.V.I.C. - GRAND VALLEY IRRIGATION COMPANY
G.V.P. - GRAND VALLEY POWER
XCEL - XCEL ENERGY

REVISION	DESCRIPTION	DATE

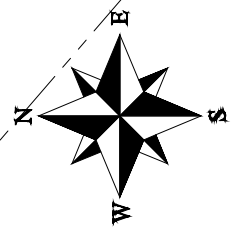
DRAWN BY	DJM	DATE	Value
DESIGNED BY	DJM	DATE	Value
CHECKED BY	WC	DATE	Value
APPROVED BY	WC	DATE	Value



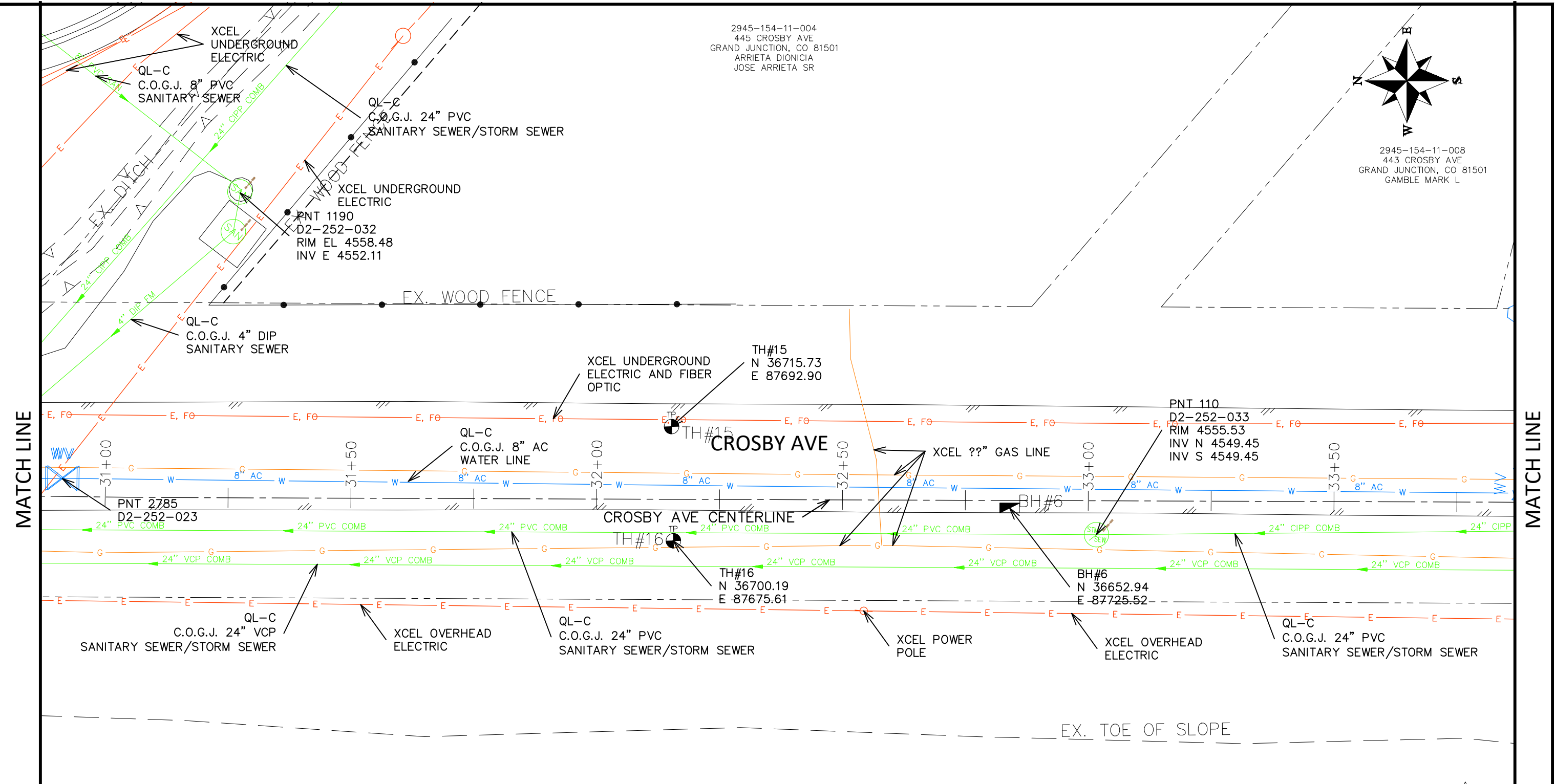
**ENGINEERING AND
TRANSPORTATION DEPARTMENT**
PROJECT NO. F210205

CROSBY AVE IMPROVEMENTS
S.U.E. PLAN - 07
October 11, 2024

2945-154-11-004
 445 CROSBY AVE
 GRAND JUNCTION, CO 81501
 ARRIETA DIONICIA
 JOSE ARRIETA SR



2945-154-11-008
 443 CROSBY AVE
 GRAND JUNCTION, CO 81501
 GAMBLE MARK L



MATCH LINE

MATCH LINE

NOTE:
 ALL UTILITIES DEPICTED AT QUALITY LEVEL D (QL-D)
 UNLESS OTHERWISE NOTED

ACRONYMS:
 C.O.G.J. - CITY OF GRAND JUNCTION
 G.V.I.C. - GRAND VALLEY IRRIGATION COMPANY
 G.V.P. - GRAND VALLEY POWER
 XCEL - XCEL ENERGY

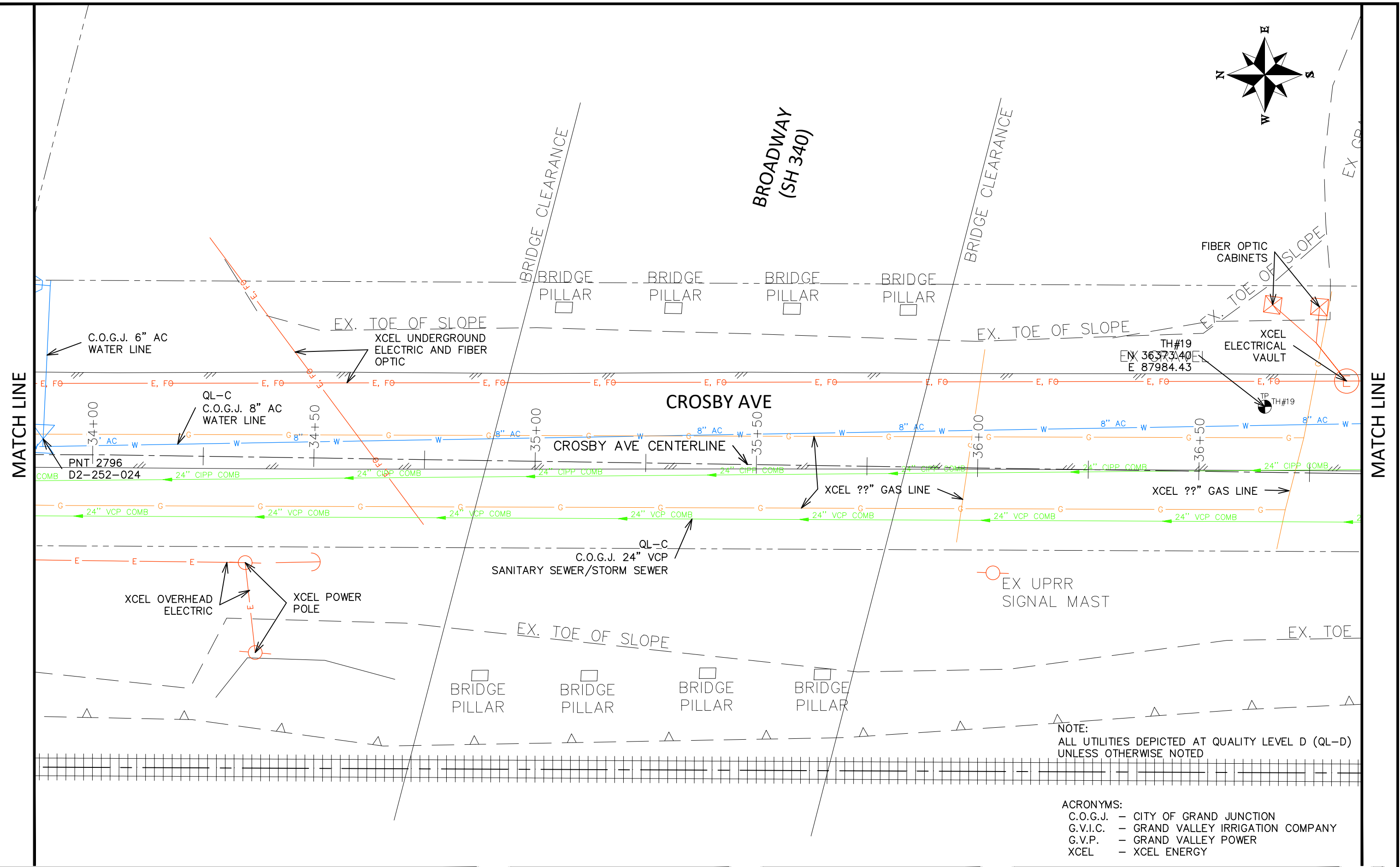
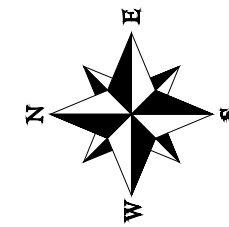
REVISION	DESCRIPTION	DATE	DRAWN BY	DATE	VALUE	SCALES:
REVISION			DJM	DATE	Value	PLAN HORIZONTAL: 1" = 20'
REVISION			DJM	DATE	Value	
REVISION			WC	DATE	Value	
REVISION			WC	DATE	Value	



ENGINEERING AND
 TRANSPORTATION DEPARTMENT
 PROJECT NO. F210205

CROSBY AVE IMPROVEMENTS
 S.U.E. PLAN - 08
 October 11, 2024

N:\EngProj\F210205 (Crosby Ave Improvements)\GOCAD\DESIGN\Field Inspection Review (90%)\006 S.U.E. PLAN.dwg - PLOTTED 10/11/2024 4:11:05 PM



MATCH LINE

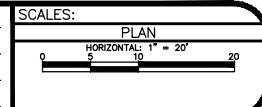
MATCH LINE

NOTE:
ALL UTILITIES DEPICTED AT QUALITY LEVEL D (QL-D)
UNLESS OTHERWISE NOTED

ACRONYMS:
C.O.G.J. - CITY OF GRAND JUNCTION
G.V.I.C. - GRAND VALLEY IRRIGATION COMPANY
G.V.P. - GRAND VALLEY POWER
XCEL - XCEL ENERGY

REVISION	DESCRIPTION	DATE

DRAWN BY	DJM	DATE	Value
DESIGNED BY	DJM	DATE	Value
CHECKED BY	WC	DATE	Value
APPROVED BY	WC	DATE	Value



**ENGINEERING AND
TRANSPORTATION DEPARTMENT**

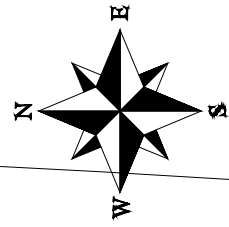
PROJECT NO. F210205

CROSBY AVE IMPROVEMENTS

S.U.E. PLAN - 09

October 11, 2024

N:\EngProj\F210205 (Crosby Ave Improvements)\60CAD\DESIGN\Field Inspection Review (90%)\006 S.U.E. PLAN.dwg - PLOTTED 10/11/2024 4:11:10 PM



2945-154-32-003
215 RICE ST
GRAND JUNCTION, CO 81501
MESA COUNTY

PNT 15283
D2-252-183
RIM 4565.76
INV SW 4559.48

PNT 15305
D2-252-181
RIM 4567.37
INV NE 4558.75
INV NW 4558.72

PNT 15394
D2-252-182
RIM 4567.53
INV SE 4558.14
INV NW 4558.11

QL-C
C.O.G.J. 18" RCP
STORM SEWER

QL-C
C.O.G.J. 18" RCP
STORM SEWER

QL-C
C.O.G.J. 18" RCP
STORM SEWER

XCEL UNDERGROUND
ELECTRIC AND FIBER
OPTIC

RAMP

RAMP

CROSBY AVE

CROSBY AVE CENTERLINE

QL-C
C.O.G.J. 8" AC
WATER LINE

QL-C
C.O.G.J. 24" CIPP
SANITARY SEWER/STORM SEWER

QL-C
C.O.G.J. 24" VCP
SANITARY SEWER/STORM SEWER

PNT N/A
D2-252-039
RIM ???????
INV N ???????
INV S ???????

NOTE:
ALL UTILITIES DEPICTED AT QUALITY LEVEL D (QL-D)
UNLESS OTHERWISE NOTED

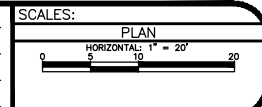
ACRONYMS:
C.O.G.J. - CITY OF GRAND JUNCTION
G.V.I.C. - GRAND VALLEY IRRIGATION COMPANY
G.V.P. - GRAND VALLEY POWER
XCEL - XCEL ENERGY

MATCH LINE

MATCH LINE

REVISION	DESCRIPTION	DATE

DRAWN BY	DATE	VALUE
DJM		
DESIGNED BY	DJM	
CHECKED BY	WC	
APPROVED BY	WC	

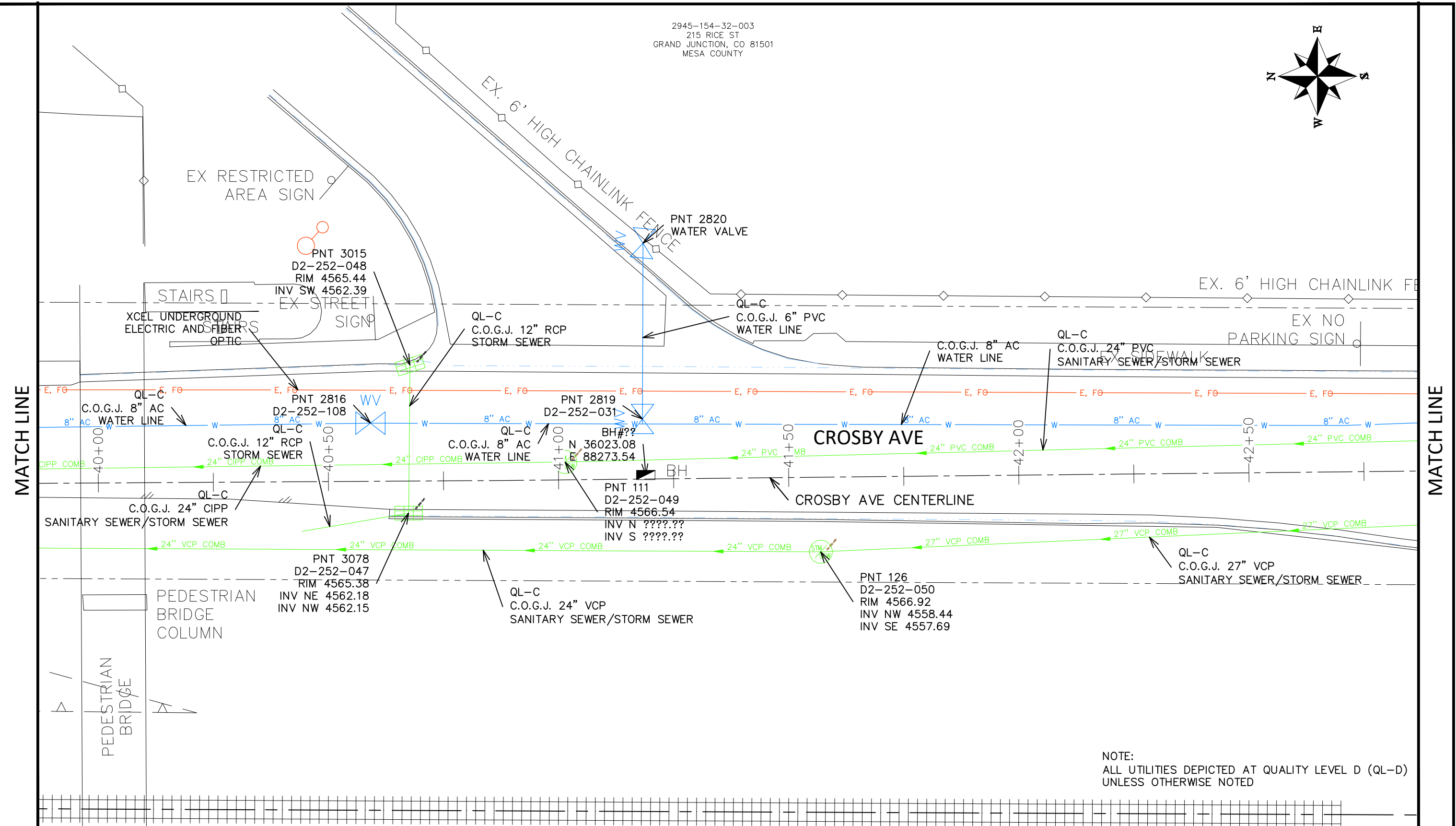
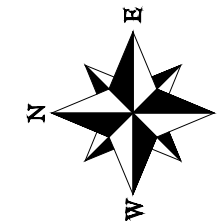


ENGINEERING AND
TRANSPORTATION DEPARTMENT
PROJECT NO. F210205

CROSBY AVE IMPROVEMENTS
S.U.E. PLAN - 10
October 11, 2024

N:\EngProj\F210205 (Crosby Ave Improvements)\60CAD\QDESIGN\Field Inspection Review (90%)\006 S.U.E. PLAN.dwg - PLOTTED 10/11/2024 4:11:15 PM

2945-154-32-003
 215 RICE ST
 GRAND JUNCTION, CO 81501
 MESA COUNTY



NOTE:
 ALL UTILITIES DEPICTED AT QUALITY LEVEL D (QL-D)
 UNLESS OTHERWISE NOTED

ACRONYMS:
 C.O.G.J. - CITY OF GRAND JUNCTION
 G.V.I.C. - GRAND VALLEY IRRIGATION COMPANY
 G.V.P. - GRAND VALLEY POWER
 XCEL - XCEL ENERGY

REVISION	DESCRIPTION	DATE	DRAWN BY	DATE	VALUE	SCALES:
REVISION			DJM	DATE	Value	PLAN HORIZONTAL: 1" = 20'
REVISION			DJM	DATE	Value	
REVISION			WC	DATE	Value	
REVISION			WC	DATE	Value	

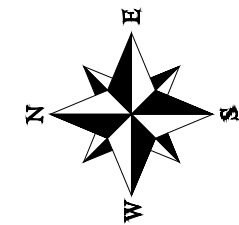


ENGINEERING AND
 TRANSPORTATION DEPARTMENT
 PROJECT NO. F210205

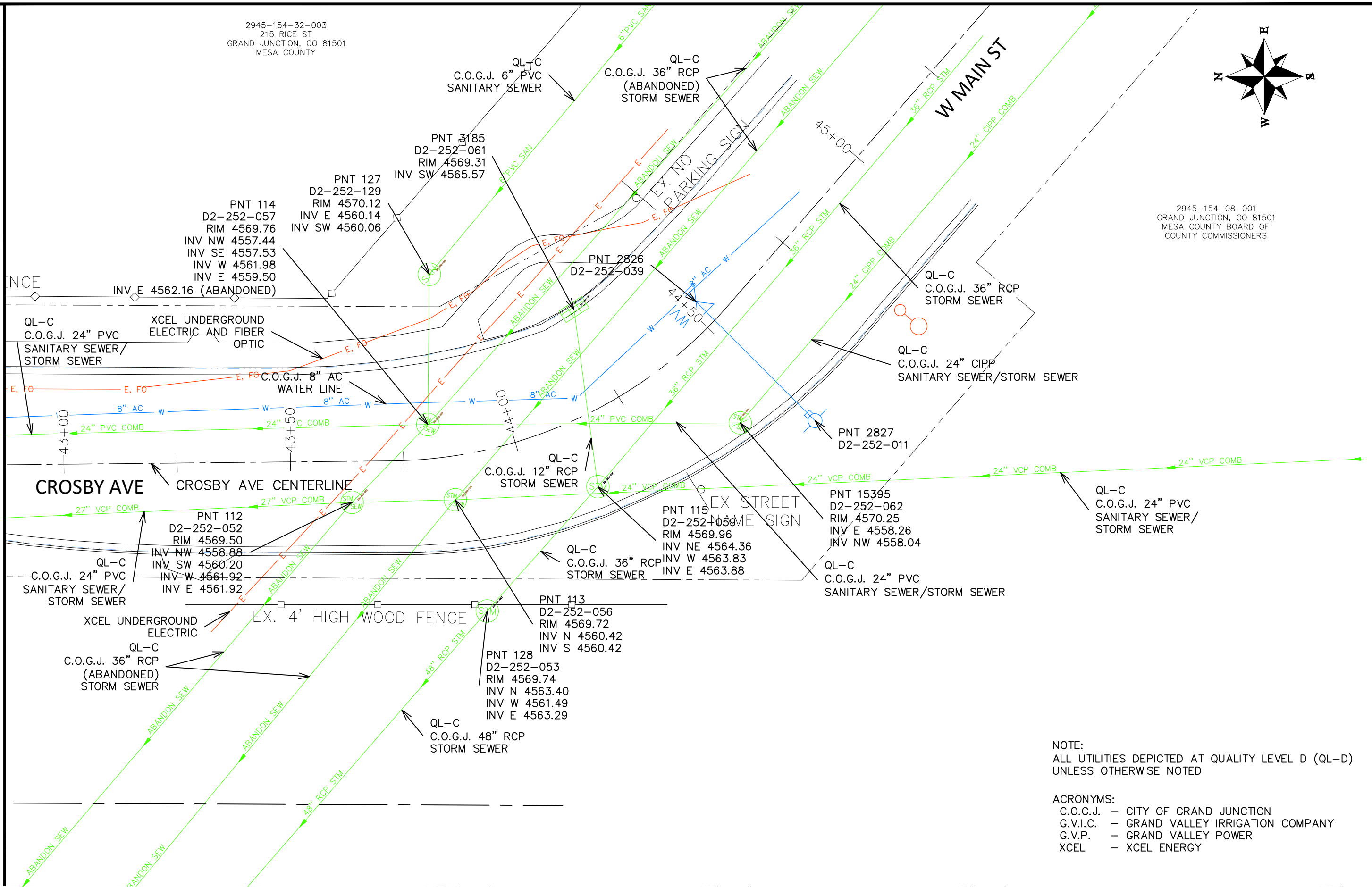
CROSBY AVE IMPROVEMENTS
 S.U.E. PLAN - 11
 October 11, 2024

N:\EngProj\F210205 (Crosby Ave Improvements)\60CAD\DESIGN\Field Inspection Review (90%)\006 S.U.E. PLAN.dwg - PLOTTED 10/11/2024 4:11:20 PM

2945-154-32-003
215 RICE ST
GRAND JUNCTION, CO 81501
MESA COUNTY



2945-154-08-001
GRAND JUNCTION, CO 81501
MESA COUNTY BOARD OF
COUNTY COMMISSIONERS



NOTE:
ALL UTILITIES DEPICTED AT QUALITY LEVEL D (QL-D)
UNLESS OTHERWISE NOTED

ACRONYMS:
C.O.G.J. - CITY OF GRAND JUNCTION
G.V.I.C. - GRAND VALLEY IRRIGATION COMPANY
G.V.P. - GRAND VALLEY POWER
XCEL - XCEL ENERGY

REVISION	DESCRIPTION	DATE	DRAWN BY	DATE	VALUE	SCALES:
REVISION			DJM	DATE	Value	PLAN HORIZONTAL: 1" = 20'
REVISION			DJM	DATE	Value	
REVISION			WC	DATE	Value	
REVISION			WC	DATE	Value	



ENGINEERING AND
TRANSPORTATION DEPARTMENT
PROJECT NO. F210205

CROSBY AVE IMPROVEMENTS
S.U.E. PLAN - 12
October 11, 2024

N:\EngProj\F210205 (Crosby Ave Improvements)\60CAD\DESIGN\Field Inspection Review (90%)\006 S.U.E. PLAN.dwg - PLOTTED 10/11/2024 4:11:25 PM