



Purchasing Division

ADDENDUM NO. 3

DATE: January 14, 2025
FROM: City of Grand Junction Purchasing Division
TO: All Offerors
RE: Crosby Avenue Utility Relocation IFB-5554-24-DD

Offerors responding to the above referenced solicitation are hereby instructed that the requirements have been clarified, modified, superseded, and supplemented as to this date as hereinafter described.

Please make note of the following questions/answers/clarifications:

- 1. Question:** Plans note #426 says connect to existing is to be with the water pipe but the bid schedule has item numbers 19-22 for restrained couplings/solid sleeves for connecting to existing?
Answer: In previous projects the contractors have been stating that this connect to existing note does not include the solid sleeve or restrained coupling, so those have been listed separately in the bid schedule.
- 2. Question:** Bid #4- 18" Casing- bid shows 40ft, plans have 100ft and say 16" not 18". 40ft on page C2.1, 40ft on page C3.0, 20ft on page C4.0
Answer: Presumably 18" pipe is more readily available than 16" pipe, so the contractor should bid to provide 18" pipe for the sleeves. The bid schedule will be amended to 100 feet.
- 3. Question:** Bid #6- 4" gv- bid shows 2, plans have 1.
Answer: The bid schedule will be amended to 1 each.
- 4. Question:** Bid #7- 6" gv- bids shows 3, plans have 4. 3 for fire hydrants, 1 on page C4.0
Answer: The bid schedule will be amended to 4 each.
- 5. Question:** Bid #8- 8" gv- bids shows 5, plans have 6. 3 on page C2.1, 3 on page C4.0
Answer: The bid schedule will be amended to 6 each.
- 6. Question:** Bid #14- 8" 11ell- bids shows 3, plans have 1. Page C2.0
Answer: The bid schedule will be amended to 1 each.
- 7. Question:** Bid #15- 8" 45ell- bids shows 21, plans have 12. Not including the offset/lowering on page C4.0
Answer: The bid schedule will be amended to 16 each. 2 on C2.0, 2 on C2.2, 4 on C3.0, 4 on C4.0 for the vertical offset, 2 on C5.0, and 2 on C5.1.
- 8. Question:** Found 1- 8" 22ell, no bid number. Page C2.0
Answer: The bid schedule will be amended to 1 each, new bid item #75.

9. **Question:** Bid #16- 6" cap- bid shows 3, not found on plans. If so, type of pipe?
Answer: The bid schedule will be amended to 4 each. There is 1 on C4.0 and 3 on C5.0. Two for AC pipe and two for PVC pipe.
10. **Question:** Bid #17- 8" cap- bid shows 12, plans have 7. Type of existing pipe?
Answer: The bid schedule will be amended to 11 each. Three AC, eight PVC. Six of these are for pressure testing.
11. **Question:** Bid #28- 8x3/4 sdi- bid shows 5, plans have 4. 3 on page C2.0, 1 on page C5.0
Answer: The fifth is also on C5.0, 401 Grand Ave. A sixth will be needed for an irrigation service for the future Crosby Ave landscaping, which will be installed at the 527 W Ouray Ave frontage at Crosby Ave. The bid schedule will be amended to 6 each.
12. **Question:** Bid #29 off by one from above.
Answer: Bid item #29 remains the same at 6 each.
13. **Question:** Bid #30 & #31- Is that supposed to be install only, supplied by City of GJ normally?
Answer: The bid schedule will be amended to (Install Only).
14. **Question:** Bid #49 8"gv- bid shows 7, plans have 3. 3 for each service stub, no others shown.
Answer: A fourth 8" GV will be needed for the drain on the 8" mainline on sheet 6. The bid schedule will be amended to 4 each.
15. **Question:** Bid #56 C/O- bid shows 7, plans have 6. 3- 8" serv, 1- 10" serv, 2 on plans page 5-6. No 2-way c/o tee made for pressure pipe. Would back/back wye's be acceptable? If not, please advise other fittings.
Answer: Back-to-back wyes will be acceptable. There are three on the 8" mainline on sheets 5-6.
16. **Clarification:** Two additional irrigation taps will be provided as indicated on the attached Sheet 4 of the Irrigation Plans.

SUBMIT THE ATTACHED REVISED BID SCHEDULE WITH YOUR BID.

The original solicitation for the project noted above is amended as noted. All other conditions of the subject remain the same.

Respectfully,



Dolly Daniels, Senior Buyer
City of Grand Junction, Colorado

**Amended Bid Schedule: Crosby Avenue Utility Relocation
Addendum No. 3**

Item No.	CDOT, City Ref.	Description	Quantity	Units	Unit Price	Total Price
<u>Waterline Facilities Replacement:</u>						
1	108.2	Water Main (4") (C-900 PVC, DR-18) (Includes surface removals, tracer wire, excavation, Type A bedding, insulation as indicated on plans, cutoff walls per 103.10, and backfill with native materials meeting 103.16)	20.	LF	\$ _____	\$ _____
2	108.2	Water Main (6") (C-900 PVC, DR-18) (Includes surface removals, tracer wire, excavation, Type A bedding, insulation as indicated on plans, cutoff walls per 103.10, and backfill with native materials meeting 103.16)	120.	LF	\$ _____	\$ _____
3	108.2	Water Main (8") (C-900 PVC, DR-18) (Includes surface removals, tracer wire, excavation, Type A bedding, insulation as indicated on plans, cutoff walls per 103.10, and backfill with native materials meeting 103.16)	1,880.	LF	\$ _____	\$ _____
4	108.2	Casing Pipe (18") (C-900 PVC, DR-18) (Includes carrier pipe supports and casing pipe end seals per Std. Detail GU-06)	100.	LF	\$ _____	\$ _____
5	108.2	Imported Trench Backfill (Class 3 Aggregate Base Course - Pit Run) (Includes haul and disposal of unsuitable excavated material) (As directed by Engineer)	550.	TON	\$ _____	\$ _____
6	108.3	Gate Valve (4") (Epoxy Coated)	1.	EA	\$ _____	\$ _____
7	108.3	Gate Valve (6") (Epoxy Coated)	4.	EA	\$ _____	\$ _____
8	108.3	Gate Valve (8") (Epoxy Coated)	6.	EA	\$ _____	\$ _____
9	108.3	Tee (6" x 6") (Epoxy Coated)	1.	EA	\$ _____	\$ _____
10	108.3	Tee (8" x 4") (Epoxy Coated)	1.	EA	\$ _____	\$ _____
11	108.3	Swivel Tee (8" x 6") (Epoxy Coated)	3.	EA	\$ _____	\$ _____
12	108.3	Tee (8" x 8") (Epoxy Coated)	1.	EA	\$ _____	\$ _____
13	108.3	Cross (8" x 8") (Epoxy Coated)	1.	EA	\$ _____	\$ _____
14	108.3	Elbow (8" x 11.25 deg) (Epoxy Coated)	1.	EA	\$ _____	\$ _____
15	108.3	Elbow (8" x 45 deg) (Epoxy Coated)	16.	EA	\$ _____	\$ _____

Amended Bid Schedule: Crosby Avenue Utility Relocation

Item No.	CDOT, City Ref.	Description	Quantity	Units	Unit Price	Total Price
16	108.3	End Cap (6") (Epoxy Coated)	4.	EA	\$ _____	\$ _____
17	108.3	End Cap (8") (Epoxy Coated)	11.	EA	\$ _____	\$ _____
18	108.3	Reducer (8" x 6") (Epoxy Coated)	1.	EA	\$ _____	\$ _____
19	108.3	Restrained Coupling (4") (Epoxy Coated)	1.	EA	\$ _____	\$ _____
20	108.3	Restrained Coupling (6") (Epoxy Coated)	2.	EA	\$ _____	\$ _____
21	108.3	Restrained Coupling (8") (Epoxy Coated)	5.	EA	\$ _____	\$ _____
22	108.3	Solid Sleeve (8") (For connection to existing AC pipe in Gunnison Ave) (Epoxy Coated)	1.	EA	\$ _____	\$ _____
23	108.3	Pipe Bell Joint Restraints (6")	8.	EA	\$ _____	\$ _____
24	108.3	Pipe Bell Joint Restraints (8")	7.	EA	\$ _____	\$ _____
25	108.3	Fire Hydrant Assembly	3.	EA	\$ _____	\$ _____
26	108.4	Water Service Line (3/4") (Type K Copper) (Water service shall be replaced to meter) (Includes cost of connection to existing service pipe)	300.	LF	\$ _____	\$ _____
27	108.4	Tapping Saddle (6" x 3/4")	1.	EA	\$ _____	\$ _____
28	108.4	Tapping Saddle (8" x 3/4")	5.	EA	\$ _____	\$ _____
29	108.4	Corporation Stop (3/4")	6.	EA	\$ _____	\$ _____
30	108.4	Meter Setter (3/4") (Install Only)	2.	EA	\$ _____	\$ _____
31	108.4	Meter Pit (Install Only)	2.	EA	\$ _____	\$ _____
32	108.7	Granular Stabilization Material (Type B) (Crushed Rock) (18" Thick Min.) (Includes haul and disposal of unsuitable excavated material) (As directed by Engineer)	600.	TON	\$ _____	\$ _____
33	108.9 304 401	Hot Bituminous Pavement (Patching of asphalt and concrete per linear foot of trench per 108.9) (3" HMA and 6" Class 6 Aggregate Base Course) (HMA grading SX, PG 64-22, GYR.=75) (T-Top not required) (Replace pavement striping in-kind)	1,921.	LF	\$ _____	\$ _____

Amended Bid Schedule: Crosby Avenue Utility Relocation

Item No.	CDOT, City Ref.	Description	Quantity	Units	Unit Price	Total Price
34	202	Abandon Existing Water Valve (Close valve, remove top half of existing valve box, fill cavity to finished subgrade with Type A bedding)	5.	EA	\$ _____	\$ _____
35	202	Remove Existing Fire Hydrant (Return Hydrant to City Shops)	3.	EA	\$ _____	\$ _____
36	210	Reset Sprinkler System (Complete in Place) (472 Base Rock St, 464 Base Rock St, 401 W Grand Ave)		Lump Sum	---	\$ _____
37	210	Reset Fence (6' Tall Chain-Link w/ Barbed Wire Top) (685 W Gunnison Ave)		Lump Sum	---	\$ _____
38	212	Reset Sod (401 W Grand Ave)		Lump Sum	---	\$ _____
<u>Sanitary Sewer Rehabilitation:</u>						
39	108.2	8" Gravity Sewer Pipe (PVC - Low-profile bell & spigot joints, butt-fused joints, or sleeve joints) (Per Project Special Provision SP-1) (Complete in place, slipline installation in existing 15" RCP, includes annular grout and tracer wire) (Includes preparation of existing 15" concrete pipe, bypass pumping, excavation and in-kind restoration of access pits)	460.	LF	\$ _____	\$ _____
40	108.3	Sewer Service Saddle Tap (8" x 4") (Complete in Place) (Includes connection to existing sewer service, tracer wire, excavation and in-kind restoration of access pits)	4.	EA	\$ _____	\$ _____
<u>Irrigation Facilities Relocation:</u>						
41	108.2	8" Irrigation Pressure Pipe (SDR-26 PIP-PVC) (Includes surface removals, tracer wire, excavation, Type A bedding, and backfill with native materials meeting 103.16)	780.	LF	\$ _____	\$ _____
42	108.2	10" Irrigation Pressure Pipe (SDR-26 PIP-PVC) (Includes surface removals, tracer wire, excavation, Type A bedding, and backfill with native materials meeting 103.16)	40.	LF	\$ _____	\$ _____
43	108.2	18" Irrigation Pressure Pipe (SDR-26 PIP-PVC) (Includes surface removals, tracer wire, excavation, Type A bedding, and backfill with native materials meeting 103.16)	740.	LF	\$ _____	\$ _____

Amended Bid Schedule: Crosby Avenue Utility Relocation

Item No.	CDOT, City Ref.	Description	Quantity	Units	Unit Price	Total Price
44	108.2	Flared End Section (Per Project Special Provision SP-2, Includes Trash Rack)	1.	EA	\$ _____	\$ _____
45	108.3	Tee 18"x8"	5.	EA	\$ _____	\$ _____
46	108.3	Tee 18"x10"	1.	EA	\$ _____	\$ _____
47	108.3	Full-body Wye 8"x8"	1.	EA	\$ _____	\$ _____
48	108.3	Elbow (8" x 45 deg)	4.	EA	\$ _____	\$ _____
49	108.3	Gate Valve (8")	6.	EA	\$ _____	\$ _____
50	108.3	Gate Valve (10")	1.	EA	\$ _____	\$ _____
51	102.8g 108.3	3/4" Air/Vacuum Valve and Vault (See City Std. Detail W-11)(Substitute Meter Pit for Manhole, provide pipe extension so Air/Vacuum Valve and Ball Valve are operable from ground surface)	1.	EA	\$ _____	\$ _____
52	108.3	8" End Cap	5.	EA	\$ _____	\$ _____
53	108.3	10" End Cap	1.	EA	\$ _____	\$ _____
54	108.3	Slide Gate for 18" Pipe (Fresno Series 5500 Galvanized Toggle Gate or Engineer Approved Equal installed in MH #2) (Includes gate stem guide per detail on plans)	1.	EA	\$ _____	\$ _____
55	102.11 108.5	Irrigation Basic Manhole (30" I.D.) (Includes connection of adjacent irrigation lines, forming inverts and adjusting to final grade) (See City Std. Detail D-15) (Install Only)	4.	EA	\$ _____	\$ _____
56	104.2	2-Way Cleanout (Includes cleanout ring and cover and concrete collar in unpaved areas) (See City Std. Cleanout SS-07)	9.	EA	\$ _____	\$ _____
57	108.5	Connect to Existing Manhole or Concrete Pipe	2.	EA	\$ _____	\$ _____
58	108.9 304 401	Hot Bituminous Pavement (Patching of asphalt and concrete per linear foot of trench per 108.9) (3" HMA and 6" Class 6 Aggregate Base Course) (HMA grading SX, PG 64-22, GYR.=75) (T-Top not required) (Replace pavement striping in-kind)	95.	LF	\$ _____	\$ _____
59	202	Removal of Pipe As Indicated (Size and Material Varies)	720.	LF	\$ _____	\$ _____

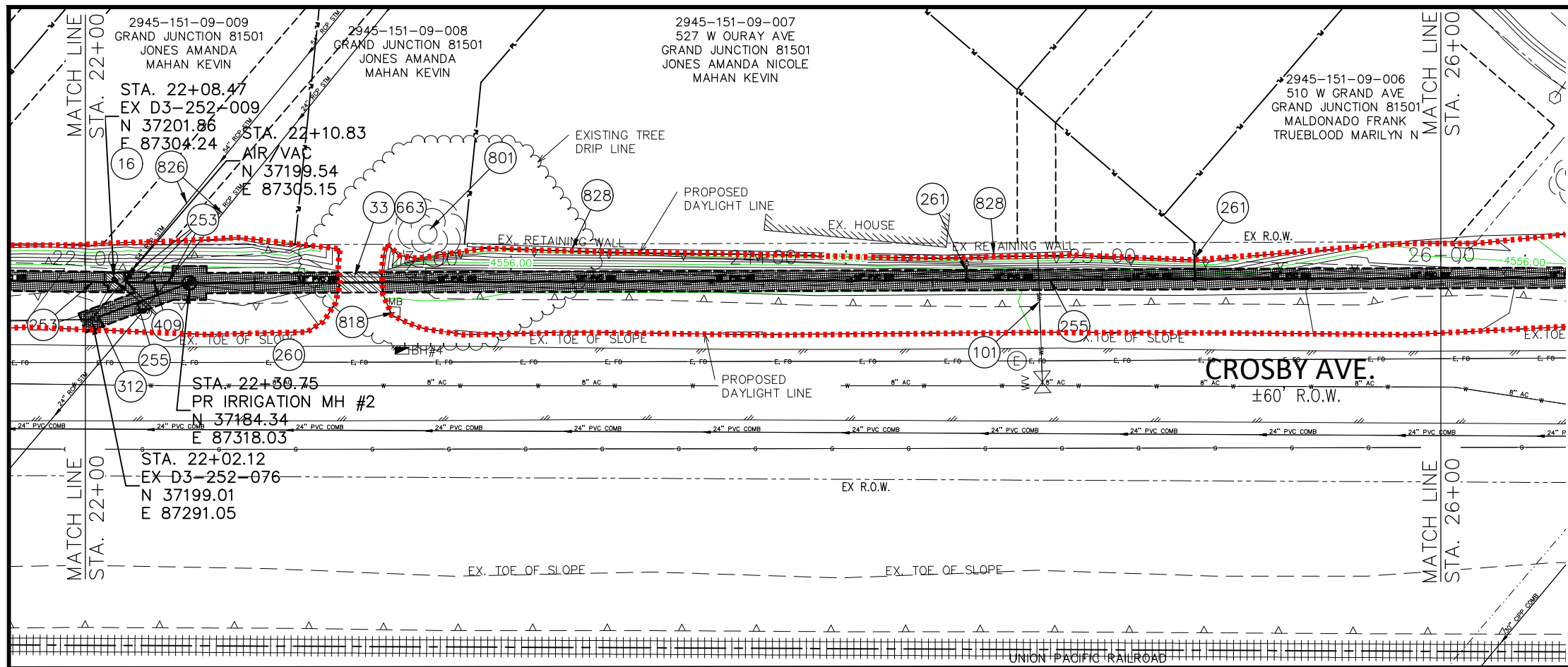
Amended Bid Schedule: Crosby Avenue Utility Relocation

Item No.	CDOT, City Ref.	Description	Quantity	Units	Unit Price	Total Price
60	202	Remove Manhole or Diversion Box	8.	EA	\$ _____	\$ _____
61	202	Remove Large Cottonwood Tree (527 W Ouray Ave & W Grand Ave ROW - Indicated trees only, all other trees are incidental to Unclassified Excavation)	2.	EA	\$ _____	\$ _____
62	203	Unclassified Excavation (Remove Existing ditch, toe of slope to toe of slope as indicated on plans) (Includes clearing of surface vegetation, brush, and trees) (Includes hauling and disposal of all material removed)	3,720.	CY	\$ _____	\$ _____
63	210	Reset Sign	4.	EA	\$ _____	\$ _____
64	210	Reset Water Service (527 W Ouray Ave)	1.	EA	\$ _____	\$ _____
<u>Applicable to Water, Sewer, & Irrigation:</u>						
65	203	Disposal of Radioactive Material (Haul and dispose at City Shops, 333 West Ave.)	40.	CY	\$ _____	\$ _____
66	208	Erosion Control (Complete in Place)		Lump Sum	---	\$ _____
67	209	Dust Abatement		Lump Sum	---	\$ _____
68	620	Portable Sanitary Facility	1.	EA	\$ _____	\$ _____
69	625	Construction Surveying (Includes As-Built Drawings)		Lump Sum	---	\$ _____
70	626	Mobilization		Lump Sum	---	\$ _____
71	629	Reset Survey Monument	2.	EA	\$ _____	\$ _____
72	630	Traffic Control Plan		Lump Sum	---	\$ _____
73	630	Traffic Control (Complete in Place)	90.	Day	\$ _____	\$ _____
74	-	Potholing As Directed By Engineer	24.	Hour	\$ _____	\$ _____
75	108.3	Elbow (8" x 22.5 deg) (Epoxy Coated)	1.	EA	\$ _____	\$ _____
MCR		Minor Contract Revisions	---	---	---	\$ 150,000.00

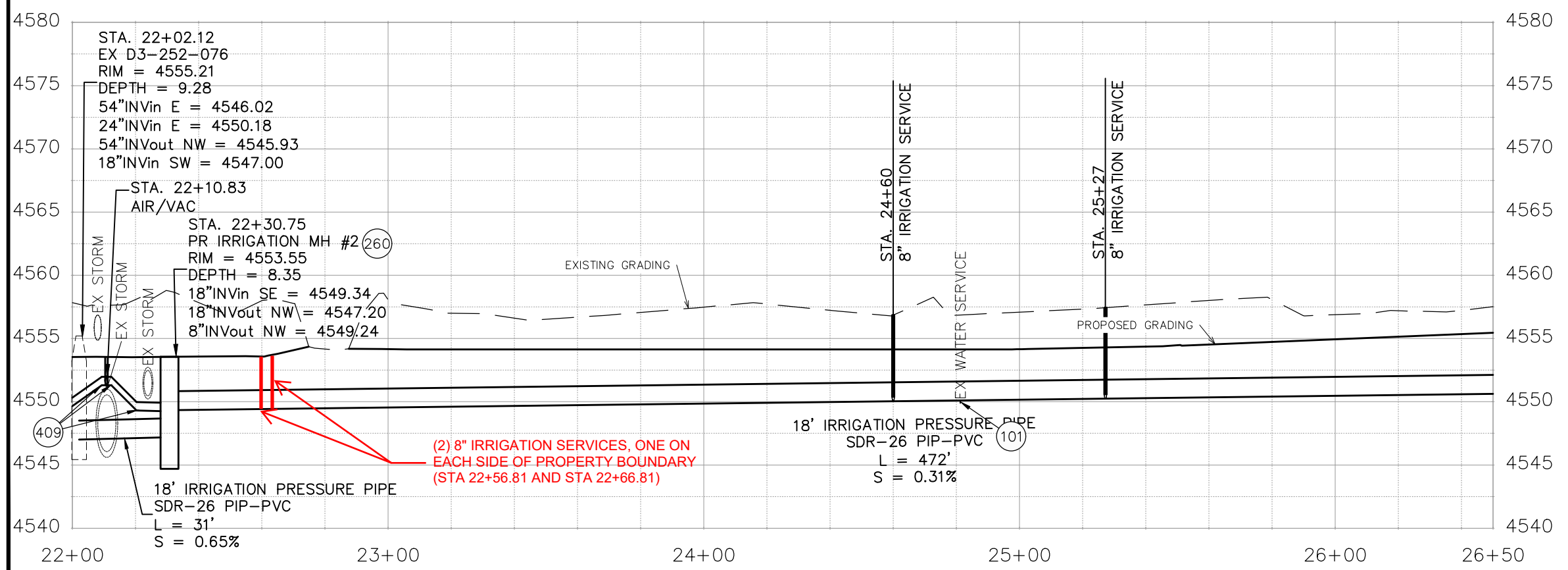
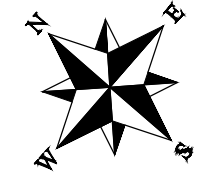
Bid Amount: \$ _____

Bid Amount:

dollars



- CONSTRUCTION NOTES**
- 16 202 - REMOVAL OF DEVERTER BOX
 - 33 202 - REMOVAL OF EXISTING SURFACE MATERIAL.
 - 101 108.2 - RESET WATER SERVICE
 - 253 108.2 - 8" IRRIGATION PRESSURE PIPE (SDR 26 PIP-PVC). INCLUDES TYPE A BEDDING AND HAUNCHING MATERIAL AND BACKFILL OF TRENCH WITH NATIVE MATERIALS MEETING 103.16 EARTH BACKFILL MATERIAL.
 - 255 108.2 - 18" IRRIGATION PRESSURE PIPE (SDR 26 PIP-PVC). INCLUDES TYPE A BEDDING AND HAUNCHING MATERIAL AND BACKFILL OF TRENCH WITH NATIVE MATERIALS MEETING 103.16 EARTH BACKFILL MATERIAL.
 - 260 102.11/108.5 - IRRIGATION BASIC MANHOLE (48" I.D.) INCLUDES CONNECTION OF ADJACENT IRRIGATION LINES, FORMING INVERTS AND ADJUSTING TO FINAL GRADE. (SEE CITY OF GRAND JUNCTION STANDARD DETAIL D-15).
 - 261 102.11/108.5 - 8" IRRIGATION STUB. INCLUDE TEE, GATE VALVE AND 2-WAY CLEANOUT. INCLUDES CLEANOUT RING AND COVER AND CONCRETE COLLAR IN UNPAVED AREAS (SEE STD. DETAIL SS-07).
 - 312 102.11/108.5 - CONNECT TO EXISTING MANHOLE (18" PIPE). (SEE CITY OF GRAND JUNCTION STANDARD DETAIL SS-08).
 - 409 102.8/108.3 - 8" DIA. 45 DEG ELBOW
 - 663 304 - AGGREGATE BASE COURSE (CLASS 6) (6" THICK)
 - 801 REMOVE TREE
 - 818 PROTECT MAILBOX
 - 826 PROTECT EXISTING UTILITY LINE IN PLACE
 - 828 PROTECT EXISTING RETAINING WALL



THE EXISTING ELEVATED DITCH SHALL BE REMOVED ENTIRELY, FROM TOE OF SLOPE TO TOE OF SLOPE.

REVISION	DESCRIPTION	DATE	DRAWN BY	DATE
REVISION			DJM	11/2024
REVISION			DJM	11/2024
REVISION			WC	11/2024
REVISION			WC	11/2024

SCALES:
PLAN & PROFILE HORIZONTAL: 1" = 40'
VERTICAL: 1" = 10'



ENGINEERING AND TRANSPORTATION DEPARTMENT
PROJECT NO. F210205

CROSBY AVE UTILITY IMPROVEMENTS
IRRIGATION PLAN - 4
December 11, 2024

N:\EngProj\F210205 (Crosby Ave Improvements)\60CAD\DESIGN\Irrigation and SSWR Plan Set\UTIL IRRIGATION PLAN AND PROFILE.dwg - PLOTTED 12/11/2024 9:32:17 AM