



Purchasing Division

ADDENDUM NO. 1

DATE: January 16, 2025
FROM: City of Grand Junction Purchasing Division
TO: All Offerors
RE: Odelberg Drain Replacement IFB-5570-25-DD

Offerors responding to the above referenced solicitation are hereby instructed that the requirements have been clarified, modified, superseded, and supplemented as to this date as hereinafter described.

Please make note of the following questions/answers/clarifications:

- 1. Question:** The Mesa County Ditch shown on Blueprint Sheet 6 is concrete (gunnite)? Will it need to be replaced in concrete at the crossing?
Answer: GVIC is asking for a shotcrete finish to the canal crossing to match existing. Bid line item has been added to attached revised Bid Schedule.
- 2. Question:** Three manholes are to be supplied by the City, these are assumed to be 01, 02, and 03. Is 11 to be supplied by the Contractor?
Answer: Imported fill line item provided in the event native soils are not suitable, at City's discretion.
- 3. Question:** Which manholes are being supplied by the City?
Answer: All three manholes that are to be placed during this project are on order by the City. These are manholes MH02, MH01, MH011. This project will stop and plug (with plywood or other acceptable material) the end of the pipe before MH-03 shown on plans. MH-03 and beyond will be constructed as part of a forthcoming project.
- 4. Question:** Will the supplied manholes have boots for inlet and outlet or will they be grouted?
Answer: The manholes are being provided with connection holes in place for the new pipe, the method of connection is left to the contractor.
- 5. Question:** Will the City load the supplied manholes onto contractor equipment, or will the contractor be responsible for loading?
Answer: The manholes will be delivered to the site from the supplier. Any additional movement or placement is the responsibility of the contractor.
- 6. Question:** Can the supplied manholes be viewed for lifting apparatus?
Answer: The manholes are being built and are unable to be viewed.
- 7. Question:** Is a geotechnical report for the site available?
Answer: There is not a geotechnical investigation report from the vicinity of the canal crossing. The investigation conducted for D1/2 Road showed groundwater at 6' below grade in two boreholes, 8' below grade in 1 borehole, and not noted in 7 boreholes (extending from 5-15 feet depth). Native soils

were noted as generally consisting of lean clay with sand, sandy lean clay and sandy gravel and cobbles with AASHTO classifications of A-4 and A-6 soils.

8. Question: Stakes onsite appear to show a power pole replacement. Does the City have any date of this proposed project?

Answer: Power poles will be relocated prior to the improvement of the D ½ Road corridor. The City does not have a specific date for the start of that proposed project, but it will be coming shortly after the drain crossing. Any utility scheduling influenced by the D ½ Road corridor project can be deconflicted by the City Project Manager.

9. Question: Will the City stake the center line of the pipe, or will the contractor?

Answer: The City will not be providing construction staking services.

10. Question: On sheet 05 of the plans, there is a "Remove Culvert" callout? What is to be done to restore the culvert if anything?

Answer: This project will be stopped short of that culvert. The City intends the stormwater line to be terminated approximately in line with the "Construction Limits" east-west lines to each side of that area. There should be no culvert removal, no reset monument box, and no impacts to the pavement section.

11. Clarification(s)

- The existing upstream lines at MH-02 and MH-11 should both be tied into the manholes, provided the elevation profile allows.
- The stockpiles on the SD-51 property will be removed from the project area by SD51 by the end of January.
- Seeding and mulching items were removed from the project scope.
- A revised plan set is provided.
- **A revised Bid Sheet is provided. Please make sure this is used when submitting your bid.**

The original solicitation for the project noted above is amended as noted. All other conditions of the subject remain the same.

Respectfully,



Dolly Daniels, Senior Buyer
City of Grand Junction, Colorado

Bid Schedule: Odelberg Drain Replacement Addendum No. 1

Item No.	CDOT, City Ref.	Description	Quantity	Units	Unit Price	Total Price
1	202	Clearing and Grubbing	0.2	Acre	\$ _____	\$ _____
2	208	Erosion Control Management	60.	Day	\$ _____	\$ _____
3	208	Erosion Log Type 1 (12 Inch)	620.	LF	\$ _____	\$ _____
4	206	Imported Backfill (As directed if native soils are unsuitable)	500.	Tons	\$ _____	\$ _____
5	600	Shotcrete - Canal Lining	200.	SF	\$ _____	\$ _____
6		Clay Cutoff Wall	3.	Ea	\$ _____	\$ _____
7	108	24 Inch Reinforced Concrete Pipe (Gasketed) Complete In Place	155.	LF	\$ _____	\$ _____
8	108	24 Inch Reinforced Concrete Pipe (Open Gasket) Complete In Place	380.	LF	\$ _____	\$ _____
9	108	Storm Sewer Basic Manhole (60 Inch) (Purchased By Owner)	2.	Ea	\$ _____	\$ _____
10	108	Storm Sewer Basic Manhole (72 Inch) (Purchased By Owner)	1.	Ea	\$ _____	\$ _____
MCR		Minor Contract Revisions	---	---	---	\$ <u>20,000.00</u>

Bid Amount: \$ _____

Bid Amount: _____

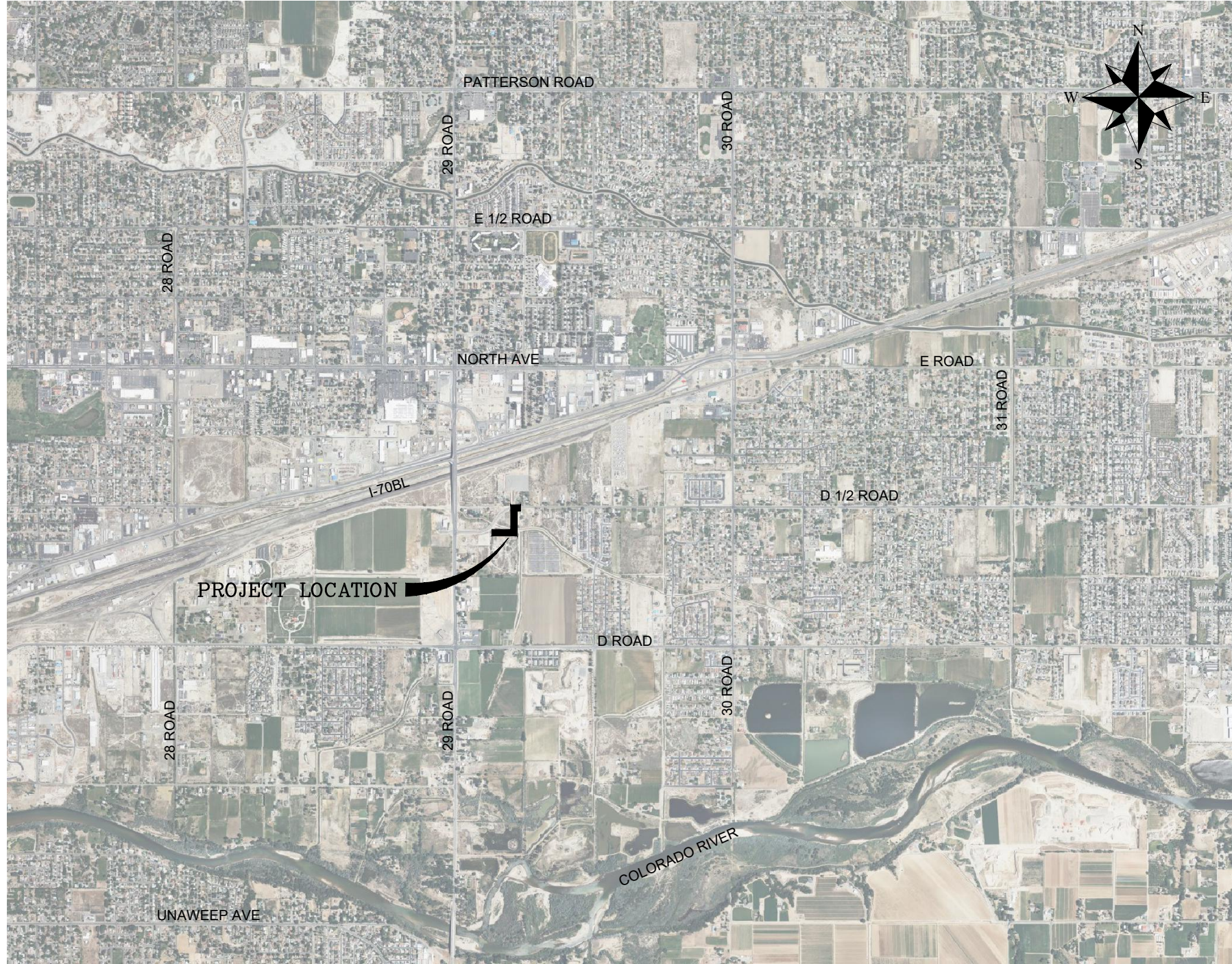
dollars

GRAND VALLEY DRAINAGE DISTRICT ODELBERG DRAIN REPLACEMENT

PROJECT NO. F210305A

January 7, 2025

No.	SHEET TITLE
01	TITLE COVER PAGE
02	SUMMARY OF APPROXIMATE QUANTITIES
03 - 05	ROADWAY DEMOLITION PLANS
06 - 11	DRAINAGE PROFILES
12	EROSION CONTROL & SEDIMENT PLAN

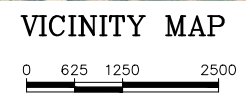


CERTIFICATION

I HEREBY CERTIFY THAT THE ATTACHED PLANS WERE PREPARED BY ME OR UNDER MY DIRECT SUPERVISION AND THAT I AM A DULY REGISTERED PROFESSIONAL ENGINEER IN THE STATE OF COLORADO.

DATE: _____

KLJ
1601 RIVERFRONT DRIVE, SUITE 204
GRAND JUNCTION, CO 81501
PH: 970.450.7474



*Engineering and
Transportation Department*



NOTE: NOTIFY AFFECTED UTILITY VENDOR 48 HOURS PRIOR TO EXCAVATIONS THAT WILL EXPOSE UTILITY LINES. THE COVER SHEET WILL HAVE A LISTING OF UTILITY VENDORS AND TELEPHONE NUMBERS.



Know what's below.
Call before you dig.

REVISION	DESCRIPTION	DATE
REVISION Δ =	_____	___/___/___
REVISION Δ =	_____	___/___/___
REVISION Δ =	_____	___/___/___
REVISION Δ =	_____	___/___/___

K:\PROJECTS\CITY\CO\GRAND_JUNCTION\2204-01020_TO\CAD\T2-D-5_FROM_ZIP\ODELBERG_DRAIN_507522SH_COVER_OLDENBURG.DWG - PLOTTED 1/15/2025 10:45:54 AM BY ROCHELLE HANSEN

ITEM DESCRIPTION	UNITS	QUANTITY	AS-BUILT
CLEARING AND GRUBBING	ACRE	0.204	
EROSION CONTROL MANAGEMENT	DAY	60	
EROSION LOG TYPE 1 (12 INCH)	LF	620	
SEEDING (NATIVE) DRILL	ACRE	0.204	
MULCHING (WEED FREE)	ACRE	0.204	
CLAY CUTOFF WALL	EA	3	
24 INCH REINFORCED CONCRETE PIPE (GASKETED) COMPLETE IN PLACE	LF	157	
24 INCH REINFORCED CONCRETE PIPE (OPEN GASKET) COMPLETE IN PLACE	LF	380	
STORM SEWER BASIC MANHOLE (60 INCH)	EA	2	
STORM SEWER BASIC MANHOLE (72 INCH)	EA	1	



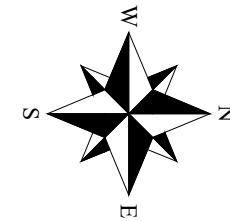
REVISION	DESCRIPTION	DATE	DRAWN BY	MG	DATE
1	ADDENDUM NO 1	01/15/25			01/15/25
2					01/07/25
3					01/07/25
4					01/07/25

NO SCALE



ENGINEERING AND
TRANSPORTATION DEPARTMENT
PROJECT NO. F210305A

D 1/2 RD, ODELBERG DRAIN
GENERAL INFORMATION
SUMMARY OF APPROXIMATE QUANTITIES



LEGEND	
	REMOVAL OF ASPHALT MAT
	REMOVAL OF CONCRETE
	CLEARING & GRUBBING
	REMOVAL OF PIPE
	RESET FENCE
	CONSTRUCTION LIMITS
	EXST TREE/BUSH
	REMOVAL OF TREE
	EXST BUSH

GENERAL NOTES:

1. ALL UTILITIES SHOWN ARE QUALITY LEVEL D. CONTRACTOR SHALL FIELD VERIFY ALL UTILITIES PRIOR TO CONSTRUCTION ACTIVITIES.
2. REMOVAL OF BUSHES SHALL BE INCLUDED IN CLEARING AND GRUBBING.

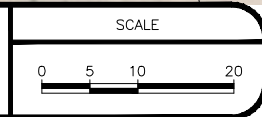


MATCH LINE A



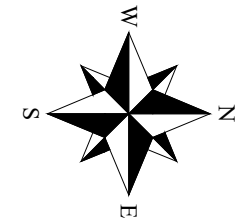
REVISION	DESCRIPTION	DATE
1	ADDENDUM NO 1	01/15/25
2		
3		
4		

DRAWN BY	MG	DATE	01/15/25
DESIGNED BY	MM	DATE	01/07/25
CHECKED BY	RH	DATE	01/07/25
APPROVED BY	RA	DATE	01/07/25



ENGINEERING AND TRANSPORTATION DEPARTMENT
PROJECT NO. F210305A

D 1/2 RD, ODELBERG DRAIN ROADWAY DEMOLITION PLANS
DEMOLITION PLAN - 01



LEGEND	
	REMOVAL OF ASPHALT MAT
	REMOVAL OF CONCRETE
	CLEARING & GRUBBING
	REMOVAL OF PIPE
	RESET FENCE
	CONSTRUCTION LIMITS
	EXST TREE/BUSH
	REMOVAL OF TREE
	EXST BUSH

GENERAL NOTES:

1. ALL UTILITIES SHOWN ARE QUALITY LEVEL D. CONTRACTOR SHALL FIELD VERIFY ALL UTILITIES PRIOR TO CONSTRUCTION ACTIVITIES.
2. REMOVAL OF BUSHES SHALL BE INCLUDED IN CLEARING AND GRUBBING.



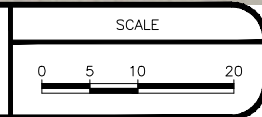
MATCH LINE A

MATCH LINE B



REVISION	DESCRIPTION	DATE
1	ADDENDUM NO 1	01/15/25
2		
3		
4		

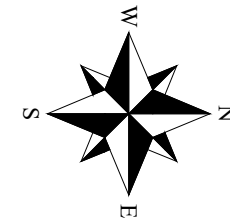
DRAWN BY	MG	DATE	01/15/25
DESIGNED BY	MM	DATE	01/07/25
CHECKED BY	RH	DATE	01/07/25
APPROVED BY	RA	DATE	01/07/25



ENGINEERING AND TRANSPORTATION DEPARTMENT
PROJECT NO. F210305A

D 1/2 RD, ODELBURG DRAIN ROADWAY DEMOLITION PLANS
DEMOLITION PLAN - 02

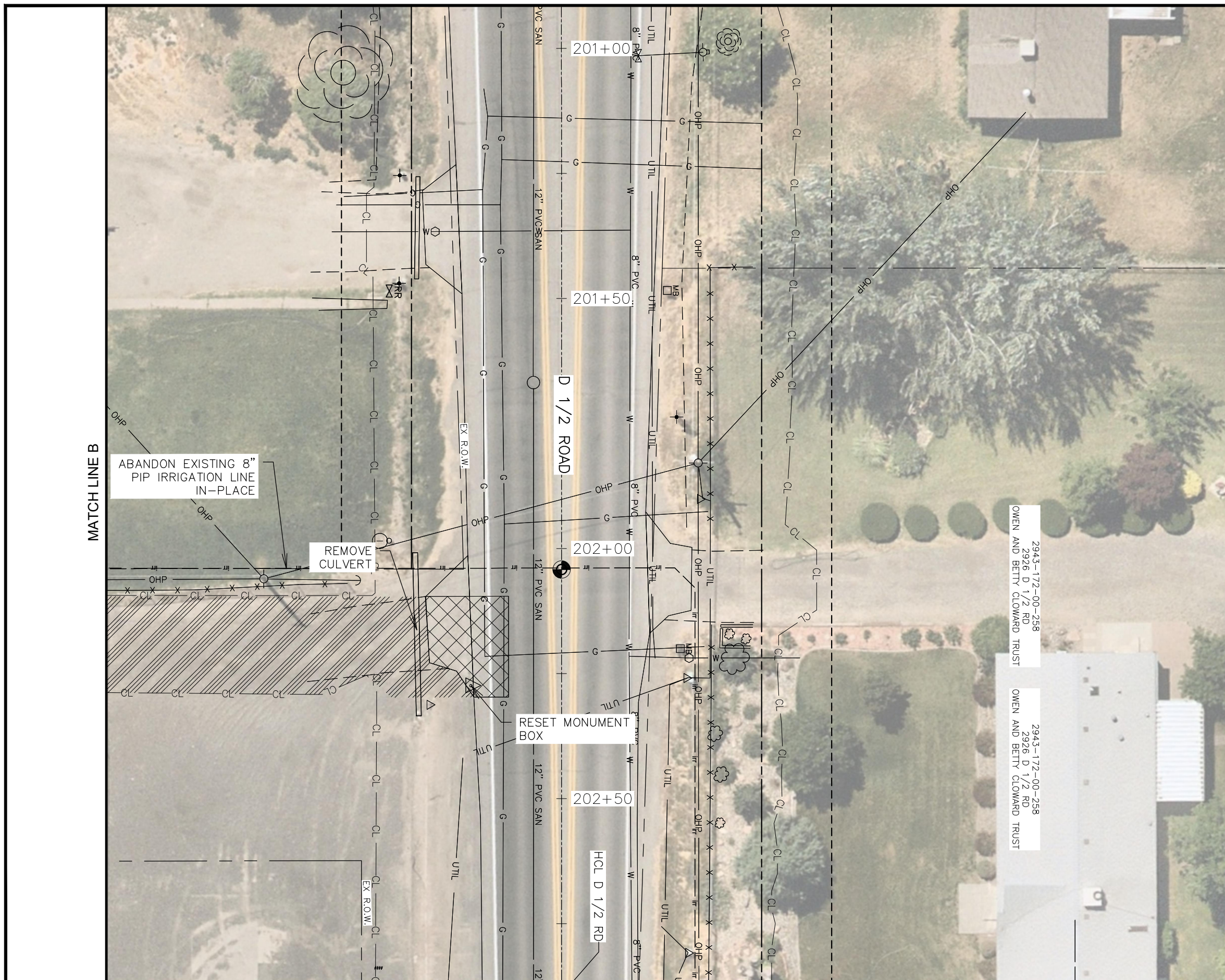
K:\PROJECTS\CITY\CO\GRAND JUNCTION\2204-01020_TO\CAD\T2-D-5_FROM ZIP\ODELBURG_DRAIN\507522SH_DEMO_PLAN_D.5_01-07.DWG - PLOTTED 1/15/2025 10:49:46 AM BY ROCHELLE HANSEN



LEGEND	
	REMOVAL OF ASPHALT MAT
	REMOVAL OF CONCRETE
	CLEARING & GRUBBING
	REMOVAL OF PIPE
	RESET FENCE
	CONSTRUCTION LIMITS
	EXST TREE/BUSH
	REMOVAL OF TREE
	EXST BUSH

GENERAL NOTES:

1. ALL UTILITIES SHOWN ARE QUALITY LEVEL D. CONTRACTOR SHALL FIELD VERIFY ALL UTILITIES PRIOR TO CONSTRUCTION ACTIVITIES.
2. REMOVAL OF BUSHES SHALL BE INCLUDED IN CLEARING AND GRUBBING.



MATCH LINE B

ABANDON EXISTING 8" PIP IRRIGATION LINE IN-PLACE

REMOVE CULVERT

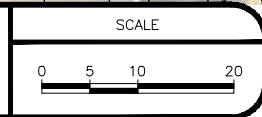
RESET MONUMENT BOX

2943-172-00-258
2926 D 1/2 RD
OWEN AND BETTY CLOWARD TRUST

2943-172-00-258
2926 D 1/2 RD
OWEN AND BETTY CLOWARD TRUST

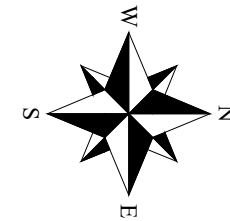
REVISION	DESCRIPTION	DATE
REVISION A	ADDENDUM NO 1	01/15/25
REVISION B		
REVISION C		
REVISION D		

DRAWN BY	MG	DATE	01/15/25
DESIGNED BY	MM	DATE	01/07/25
CHECKED BY	RH	DATE	01/07/25
APPROVED BY	RA	DATE	01/07/25



ENGINEERING AND TRANSPORTATION DEPARTMENT
PROJECT NO. F210305A

D 1/2 RD, ODELBURG DRAIN ROADWAY DEMOLITION PLANS
DEMOLITION PLAN - 03

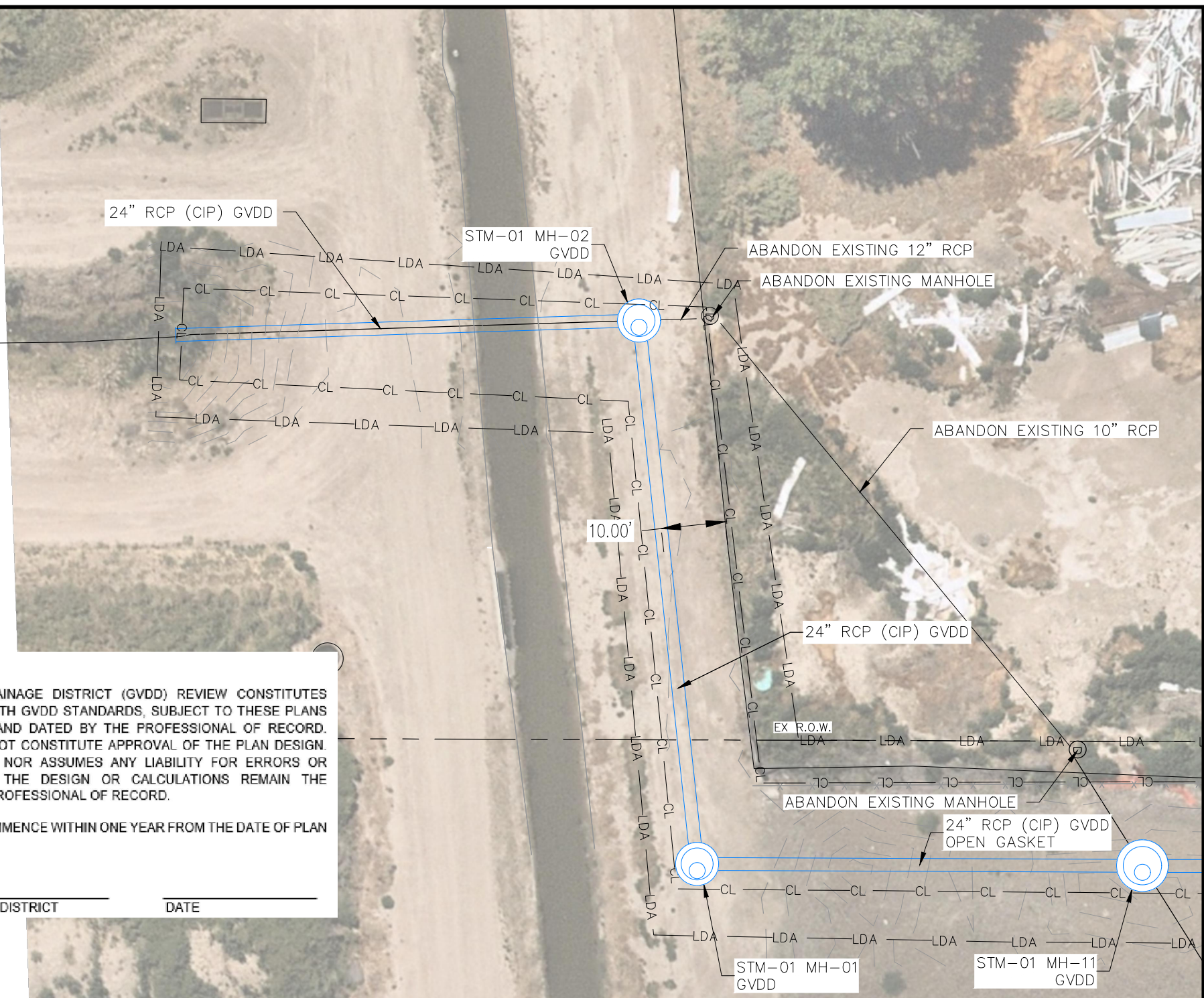


DRAINAGE LEGEND

- IRR - PROPOSED IRRIGATION LINE
 - IRRIGATION MANHOLE
 - IRRIGATION VALVE/RISER
 - IRRIGATION CULVERT/PIPE
 - IRRIGATION FLOWLINE
 - SOIL RIPRAP (12 INCH)
 - TOP OF CUT
 - TOE OF FILL
 - PROPOSED STORM
 - FUTURE DEVELOPMENT
- RCP = REINFORCED CONCRETE PIPE
CIP = COMPLETE IN PLACE

NOTES:

1. INFORMATION SHOWN FOR PROPOSED IRRIGATION FACILITIES IS APPROXIMATE. CONTRACTOR NEEDS TO FIELD VERIFY ELEVATIONS MATCH EXISTING AND MAKE ADJUSTMENTS AS NEEDED.



MATCH LINE A

ACCEPTANCE BLOCK

THE GRAND VALLEY DRAINAGE DISTRICT (GVDD) REVIEW CONSTITUTES GENERAL COMPLIANCE WITH GVDD STANDARDS, SUBJECT TO THESE PLANS BEING SEALED, SIGNED, AND DATED BY THE PROFESSIONAL OF RECORD. REVIEW BY GVDD DOES NOT CONSTITUTE APPROVAL OF THE PLAN DESIGN. GVDD NEITHER ACCEPTS NOR ASSUMES ANY LIABILITY FOR ERRORS OR OMISSIONS. ERRORS IN THE DESIGN OR CALCULATIONS REMAIN THE RESPONSIBILITY OF THE PROFESSIONAL OF RECORD.

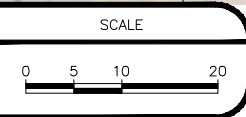
CONSTRUCTION MUST COMMENCE WITHIN ONE YEAR FROM THE DATE OF PLAN SIGNATURE.

GRAND VALLEY DRAINAGE DISTRICT _____ DATE _____

STRUCTURE TABLE

STRUCTURE NAME	BID ITEM NAME	STATION (CENTER OF STRUCTURE)	OFFSET (CENTER OF STRUCTURE)	DETAILS	PIPES IN	PIPES OUT
STM-01 MH-02	MANHOLE (5 FOOT)	STA: 201+37.56	OFF: 403.76 RT	RIM = 4618.81 SUMP = 4607.8	24" RCP (CIP) GVDD INV IN (E) = 4608.88	24" RCP (CIP) GVDD INV OUT (S) = 4608.78
STM-01 MH-01	MANHOLE (5 FOOT)	STA: 202+22.13	OFF: 394.74 RT	RIM = 4619.18 SUMP = 4608.1	24" RCP (CIP) GVDD INV IN (N) = 4609.19	24" RCP (CIP) GVDD INV OUT (W) = 4609.09
STM-01 MH-11	MANHOLE (6 FOOT)	STA: 202+22.40	OFF: 325.52 RT	RIM = 4622.50 SUMP = 4608.4	24" RCP (CIP) GVDD INV IN (N) = 4609.46	24" RCP (CIP) GVDD INV OUT (S) = 4609.36

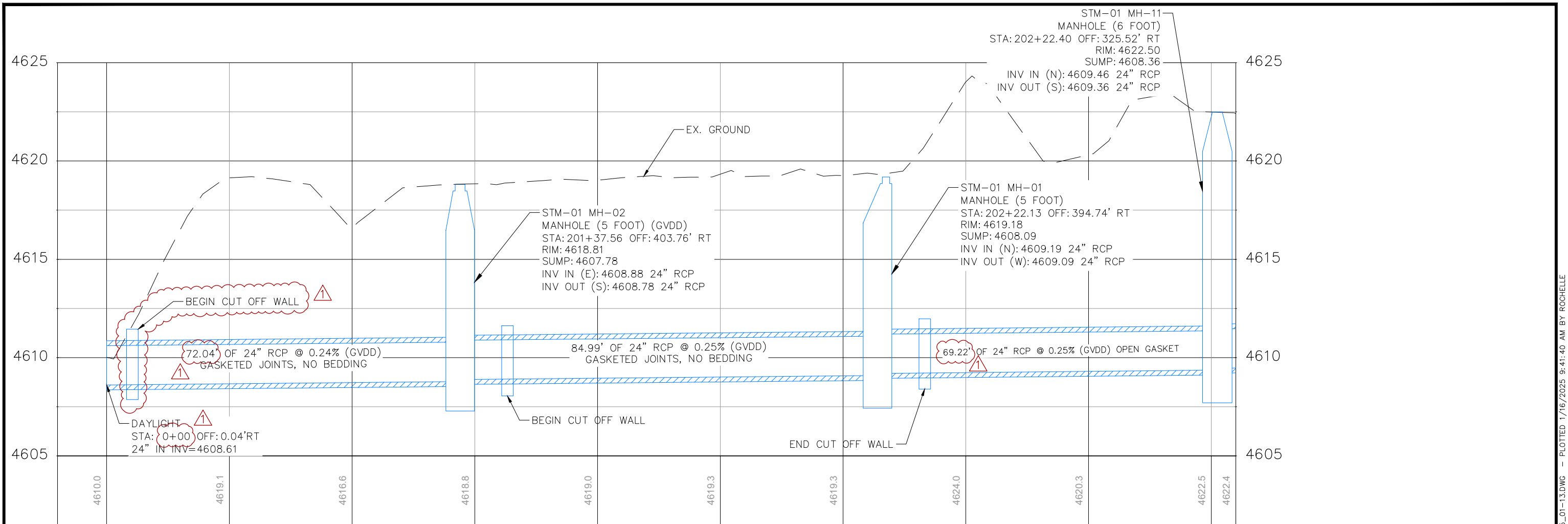
REVISION	DESCRIPTION	DATE	DRAWN BY	MG	DATE	01/15/25
REVISION A	ADDENDUM NO 1	01/15/25	DESIGNED BY	MM	DATE	01/07/25
REVISION B			CHECKED BY	RH	DATE	01/07/25
REVISION C			APPROVED BY	RA	DATE	01/07/25



ENGINEERING AND TRANSPORTATION DEPARTMENT
PROJECT NO. F210305A

D 1/2 RD, ODELBURG DRAIN DRAINAGE AND IRRIGATION PLANS
DRAINAGE PLAN - 01

K:\PROJECTS\CITY\CO\GRAND JUNCTION\2204-01020-TO\CAD\T2-D-5-FROM ZIP\ODELBURG_DRAIN\507522SH_DRNG_PLAN_D_5_01-07.DWG - PLOTTED 1/15/2025 10:52:51 AM BY ROCHELLE HANSEN



NOTES:

1. GVDD SECTIONS OF PIPE TO BE OWNED AND MAINTAINED BY GRAND VALLEY DRAINAGE DISTRICT UPON COMPLETION OF THE PROJECT.
2. GVDD PIPE INSTALLED SOUTH OF RIGHT-OF-WAY SHALL BE INSTALLED WITHOUT BASKETS TO ALLOW FOR COLLECTION OF GROUNDWATER.

ACCEPTANCE BLOCK

THE GRAND VALLEY DRAINAGE DISTRICT (GVDD) REVIEW CONSTITUTES GENERAL COMPLIANCE WITH GVDD STANDARDS, SUBJECT TO THESE PLANS BEING SEALED, SIGNED, AND DATED BY THE PROFESSIONAL OF RECORD. REVIEW BY GVDD DOES NOT CONSTITUTE APPROVAL OF THE PLAN DESIGN. GVDD NEITHER ACCEPTS NOR ASSUMES ANY LIABILITY FOR ERRORS OR OMISSIONS. ERRORS IN THE DESIGN OR CALCULATIONS REMAIN THE RESPONSIBILITY OF THE PROFESSIONAL OF RECORD.

CONSTRUCTION MUST COMMENCE WITHIN ONE YEAR FROM THE DATE OF PLAN SIGNATURE.

GRAND VALLEY DRAINAGE DISTRICT

DATE



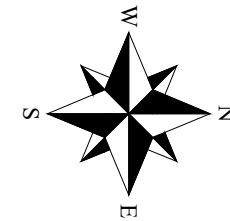
REVISION	DESCRIPTION	DATE	DRAWN BY	MG	DATE	SCALE
1	ADDENDUM NO 1	01/15/25			01/07/25	
					01/07/25	
					01/07/25	
					01/07/25	



**ENGINEERING AND
TRANSPORTATION DEPARTMENT**
PROJECT NO. F210305A

**D 1/2 RD, ODEMBERG DRAIN
DRAINAGE & IRRIGATION PLANS
DRAINAGE PROFILE - 01**

07



DRAINAGE LEGEND

- IRR — — PROPOSED IRRIGATION LINE
- ⊙ IRRIGATION MANHOLE
- ✱ IRRIGATION VALVE/RISER
- ▬ IRRIGATION CULVERT/PIPE
- - - IRRIGATION FLOWLINE
- ⊞ SOIL RIPRAP (12 INCH)
- - - TOP OF CUT
- - - TOE OF FILL
- ⊞ PROPOSED STORM
- - - FUTURE DEVELOPMENT
- RCP = REINFORCED CONCRETE PIPE
- CIP = COMPLETE IN PLACE

NOTES:

1. INFORMATION SHOWN FOR PROPOSED IRRIGATION FACILITIES IS APPROXIMATE. CONTRACTOR NEEDS TO FIELD VERIFY ELEVATIONS MATCH EXISTING AND MAKE ADJUSTMENTS AS NEEDED.

ACCEPTANCE BLOCK

THE GRAND VALLEY DRAINAGE DISTRICT (GVDD) REVIEW CONSTITUTES GENERAL COMPLIANCE WITH GVDD STANDARDS, SUBJECT TO THESE PLANS BEING SEALED, SIGNED, AND DATED BY THE PROFESSIONAL OF RECORD. REVIEW BY GVDD DOES NOT CONSTITUTE APPROVAL OF THE PLAN DESIGN. GVDD NEITHER ACCEPTS NOR ASSUMES ANY LIABILITY FOR ERRORS OR OMISSIONS. ERRORS IN THE DESIGN OR CALCULATIONS REMAIN THE RESPONSIBILITY OF THE PROFESSIONAL OF RECORD.

CONSTRUCTION MUST COMMENCE WITHIN ONE YEAR FROM THE DATE OF PLAN SIGNATURE.

GRAND VALLEY DRAINAGE DISTRICT _____ DATE _____

MATCH LINE A

MATCH LINE B

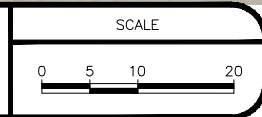


- NOTES:**
1. GVDD SECTIONS OF PIPE TO BE OWNED AND MAINTAINED BY GRAND VALLEY DRAINAGE DISTRICT UPON COMPLETION OF THE PROJECT.
 2. GVDD PIPE INSTALLED SOUTH OF RIGHT-OF-WAY SHALL BE INSTALLED WITHOUT BASKETS TO ALLOW FOR COLLECTION OF GROUNDWATER.



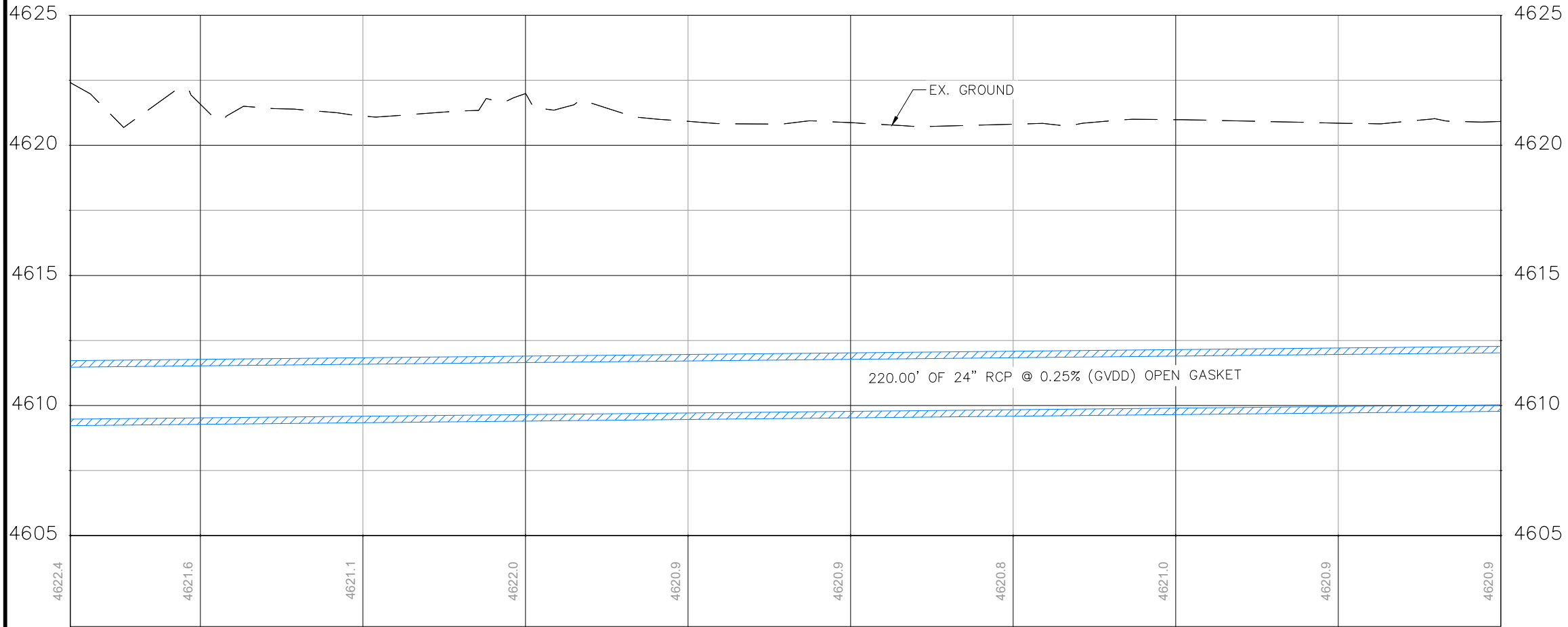
REVISION	DESCRIPTION	DATE
ADDENDUM NO 1		01/15/25

DRAWN BY	MG	DATE	01/15/25
DESIGNED BY	MM	DATE	01/07/25
CHECKED BY	RH	DATE	01/07/25
APPROVED BY	RA	DATE	01/07/25



ENGINEERING AND TRANSPORTATION DEPARTMENT
PROJECT NO. F210305A

D 1/2 RD, ODELBERG DRAIN DRAINAGE AND IRRIGATION PLANS
DRAINAGE PLAN - 02



NOTES:

1. GVDD SECTIONS OF PIPE TO BE OWNED AND MAINTAINED BY GRAND VALLEY DRAINAGE DISTRICT UPON COMPLETION OF THE PROJECT.
2. GVDD PIPE INSTALLED SOUTH OF RIGHT-OF-WAY SHALL BE INSTALLED WITHOUT BASKETS TO ALLOW FOR COLLECTION OF GROUNDWATER.

ACCEPTANCE BLOCK

THE GRAND VALLEY DRAINAGE DISTRICT (GVDD) REVIEW CONSTITUTES GENERAL COMPLIANCE WITH GVDD STANDARDS, SUBJECT TO THESE PLANS BEING SEALED, SIGNED, AND DATED BY THE PROFESSIONAL OF RECORD. REVIEW BY GVDD DOES NOT CONSTITUTE APPROVAL OF THE PLAN DESIGN. GVDD NEITHER ACCEPTS NOR ASSUMES ANY LIABILITY FOR ERRORS OR OMISSIONS. ERRORS IN THE DESIGN OR CALCULATIONS REMAIN THE RESPONSIBILITY OF THE PROFESSIONAL OF RECORD.

CONSTRUCTION MUST COMMENCE WITHIN ONE YEAR FROM THE DATE OF PLAN SIGNATURE.

GRAND VALLEY DRAINAGE DISTRICT

DATE



REVISION	DESCRIPTION	DATE	DRAWN BY	MG	DATE	01/07/25	SCALE 0 5 10 20
REVISION Δ	ADDENDUM NO 1	01/15/25	DESIGNED BY	MM	DATE	01/07/25	
REVISION Δ			CHECKED BY	RH	DATE	01/07/25	
REVISION Δ			APPROVED BY	RA	DATE	01/07/25	
REVISION Δ							



ENGINEERING AND TRANSPORTATION DEPARTMENT
PROJECT NO. F210305A

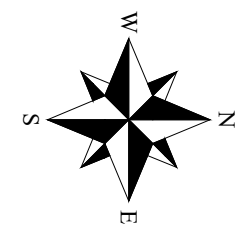
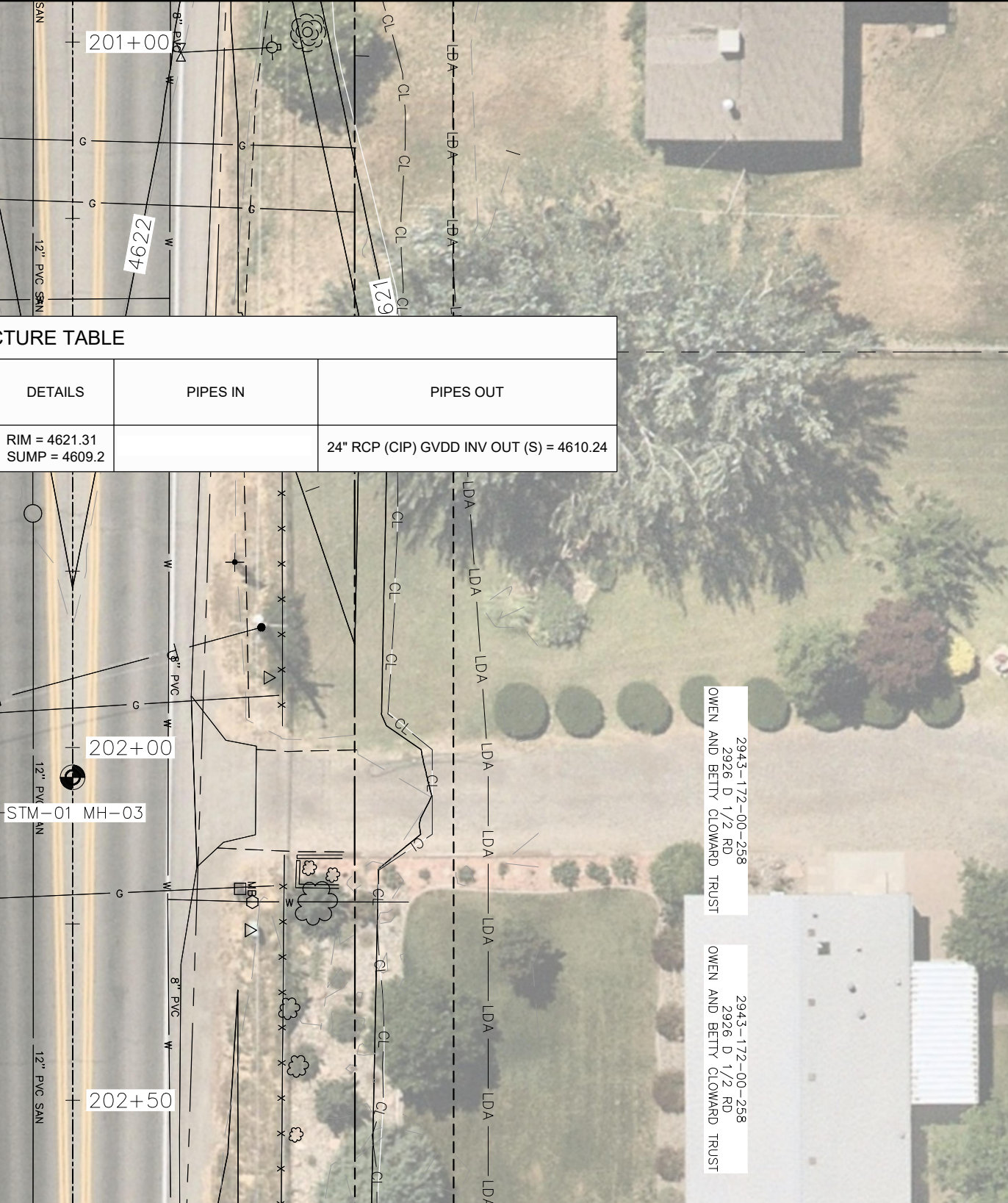
**D 1/2 RD, ODELBERG DRAIN
DRAINAGE & IRRIGATION PLANS
DRAINAGE PROFILE - 02**

ACCEPTANCE BLOCK

THE GRAND VALLEY DRAINAGE DISTRICT (GVDD) REVIEW CONSTITUTES GENERAL COMPLIANCE WITH GVDD STANDARDS, SUBJECT TO THESE PLANS BEING SEALED, SIGNED, AND DATED BY THE PROFESSIONAL OF RECORD. REVIEW BY GVDD DOES NOT CONSTITUTE APPROVAL OF THE PLAN DESIGN. GVDD NEITHER ACCEPTS NOR ASSUMES ANY LIABILITY FOR ERRORS OR OMISSIONS. ERRORS IN THE DESIGN OR CALCULATIONS REMAIN THE RESPONSIBILITY OF THE PROFESSIONAL OF RECORD.

CONSTRUCTION MUST COMMENCE WITHIN ONE YEAR FROM THE DATE OF PLAN SIGNATURE.

GRAND VALLEY DRAINAGE DISTRICT _____ DATE _____



DRAINAGE LEGEND

- IRR - PROPOSED IRRIGATION LINE
- IRRIGATION MANHOLE
- IRRIGATION VALVE/RISER
- IRRIGATION CULVERT/PIPE
- IRRIGATION FLOWLINE
- SOIL RIPRAP (12 INCH)
- TOP OF CUT
- TOE OF FILL
- PROPOSED STORM
- FUTURE DEVELOPMENT
- RCP = REINFORCED CONCRETE PIPE
- CIP = COMPLETE IN PLACE

NOTES:

1. INFORMATION SHOWN FOR PROPOSED IRRIGATION FACILITIES IS APPROXIMATE. CONTRACTOR NEEDS TO FIELD VERIFY ELEVATIONS MATCH EXISTING AND MAKE ADJUSTMENTS AS NEEDED.

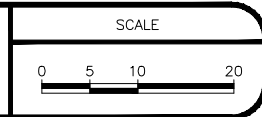
STRUCTURE TABLE						
STRUCTURE NAME	BID ITEM NAME	STATION (CENTER OF STRUCTURE)	OFFSET (CENTER OF STRUCTURE)	DETAILS	PIPES IN	PIPES OUT
STM-01 MH-03	MANHOLE (6 FOOT)	STA: 202+23.48	OFF: 15.04 RT	RIM = 4621.31 SUMP = 4609.2		24" RCP (CIP) GVDD INV OUT (S) = 4610.24

MATCH LINE A

- NOTES:**
1. GVDD SECTIONS OF PIPE TO BE OWNED AND MAINTAINED BY GRAND VALLEY DRAINAGE DISTRICT UPON COMPLETION OF THE PROJECT.
 2. GVDD PIPE INSTALLED SOUTH OF RIGHT-OF-WAY SHALL BE INSTALLED WITHOUT BASKETS TO ALLOW FOR COLLECTION OF GROUNDWATER.

REVISION	DESCRIPTION	DATE
REVISION A	ADDENDUM NO 1	01/15/25
REVISION B		
REVISION C		
REVISION D		

DRAWN BY	MG	DATE	01/15/25
DESIGNED BY	MM	DATE	01/07/25
CHECKED BY	RH	DATE	01/07/25
APPROVED BY	RA	DATE	01/07/25



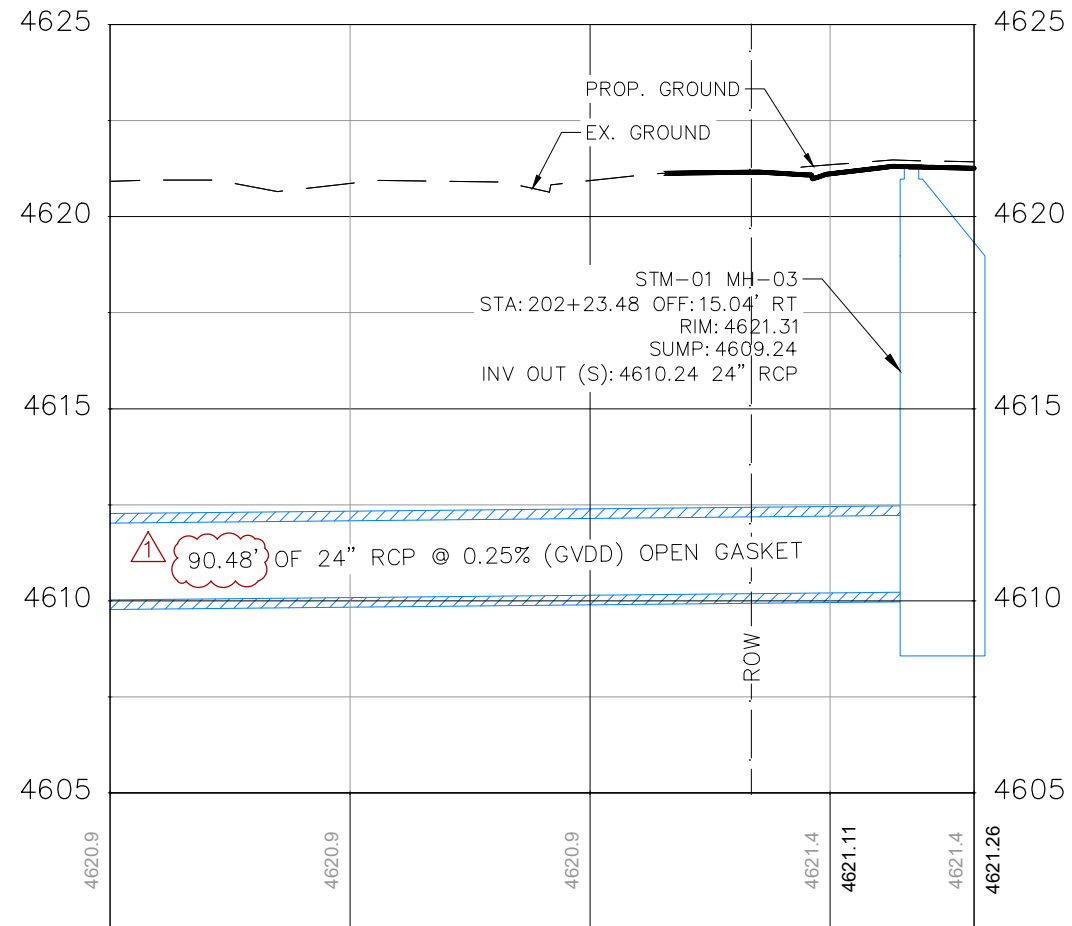
ENGINEERING AND TRANSPORTATION DEPARTMENT

PROJECT NO. F210305A

D 1/2 RD, ODELBURG DRAIN DRAINAGE AND IRRIGATION PLANS

DRAINAGE PLAN - 02

K:\PROJECTS\CITY\CO\GRAND JUNCTION\2204-01020-TO\CAD\T2-D-5-FROM ZIP\ODELBURG_DRAIN\507522SH_DRNG_PLAN_D_5_01-07.DWG - PLOTTED 1/15/2025 10:58:13 AM BY ROCHELLE HANSEN



NOTES:

1. GVDD SECTIONS OF PIPE TO BE OWNED AND MAINTAINED BY GRAND VALLEY DRAINAGE DISTRICT UPON COMPLETION OF THE PROJECT.
2. GVDD PIPE INSTALLED SOUTH OF RIGHT-OF-WAY SHALL BE INSTALLED WITHOUT BASKETS TO ALLOW FOR COLLECTION OF GROUNDWATER.

ACCEPTANCE BLOCK

THE GRAND VALLEY DRAINAGE DISTRICT (GVDD) REVIEW CONSTITUTES GENERAL COMPLIANCE WITH GVDD STANDARDS, SUBJECT TO THESE PLANS BEING SEALED, SIGNED, AND DATED BY THE PROFESSIONAL OF RECORD. REVIEW BY GVDD DOES NOT CONSTITUTE APPROVAL OF THE PLAN DESIGN. GVDD NEITHER ACCEPTS NOR ASSUMES ANY LIABILITY FOR ERRORS OR OMISSIONS. ERRORS IN THE DESIGN OR CALCULATIONS REMAIN THE RESPONSIBILITY OF THE PROFESSIONAL OF RECORD.

CONSTRUCTION MUST COMMENCE WITHIN ONE YEAR FROM THE DATE OF PLAN SIGNATURE.

GRAND VALLEY DRAINAGE DISTRICT

DATE

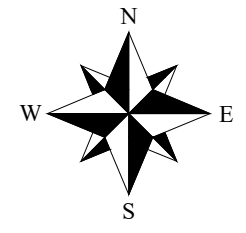
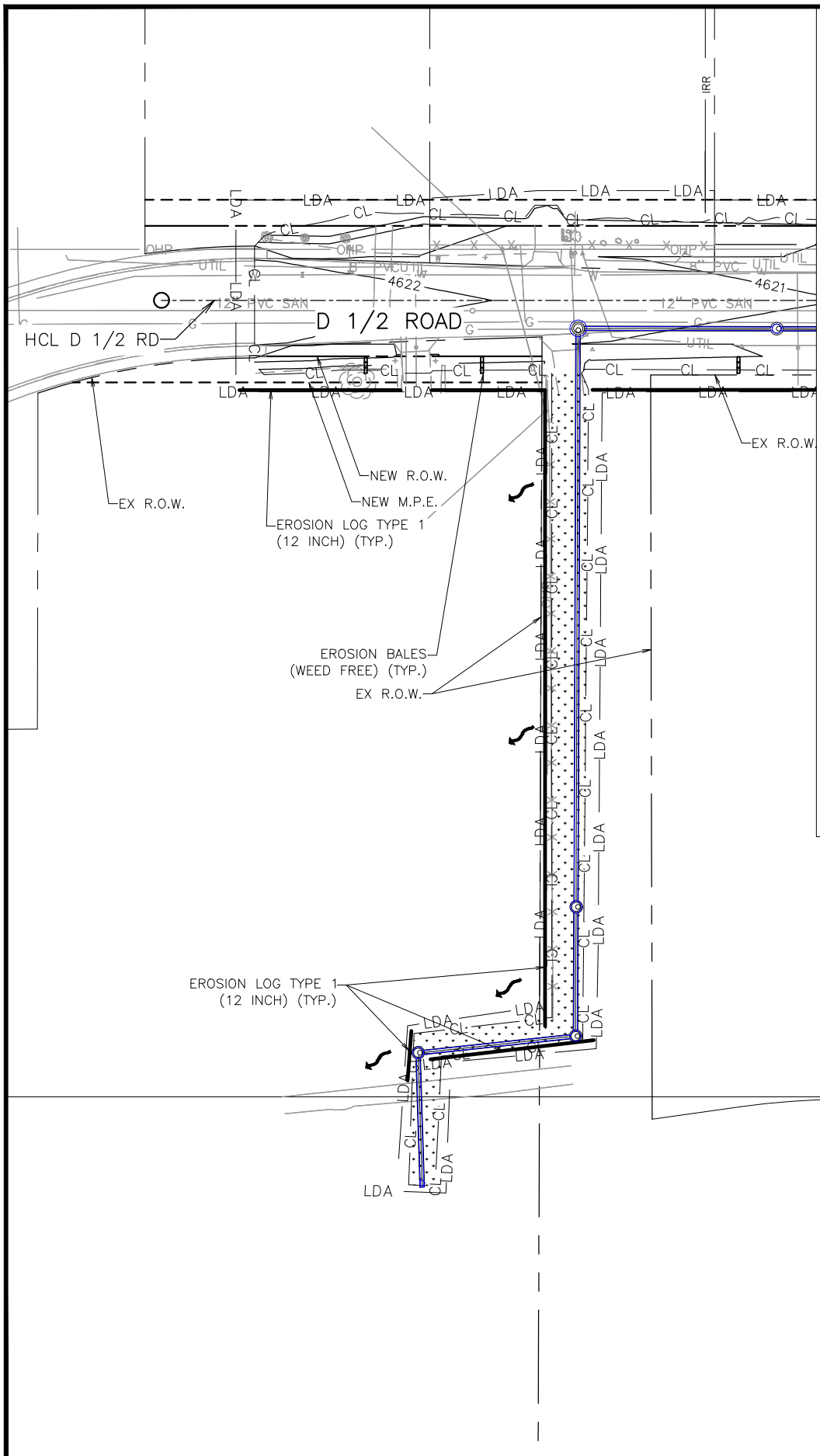


REVISION	DESCRIPTION	DATE	DRAWN BY	MG	DATE	SCALE
REVISION Δ	ADDENDUM NO 1	1/15/25	DESIGNED BY	MM	DATE 01/07/25	
REVISION Δ			CHECKED BY	RH	DATE 01/07/25	
REVISION Δ			APPROVED BY	RA	DATE 01/07/25	
REVISION Δ						

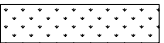






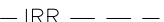



ENGINEERING AND TRANSPORTATION DEPARTMENT
PROJECT NO. F210305A

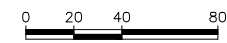
D 1/2 RD, ODELBURG DRAIN DRAINAGE & IRRIGATION PLANS
DRAINAGE PROFILE - 03



SWMP LEGEND

-  SEEDING AND MULCHING
-  CL CONSTRUCTION LIMITS
-  LDA LIMITS OF DISTURBED AREA
-  EROSION LOG TYPE 1 (12 INCH)
-  EROSION BALES (WEED FREE)
-  STORM DRAIN INLET PROTECTION
-  FLOW ARROW
-  IRR PROPOSED IRRIGATION LINE
-  FUTURE DEVELOPMENT



REVISION	DESCRIPTION	DATE	DRAWN BY	MG	DATE	SCALE
1	ADDENDUM NO 1	01/15/25			01/15/25	
2			DESIGNED BY	MM	01/07/25	
3			CHECKED BY	RH	01/07/25	
4			APPROVED BY	RA	01/07/25	



ENGINEERING AND TRANSPORTATION DEPARTMENT
PROJECT NO. F210305A

**D 1/2 RD, ODELBERG DRAIN
EROSION & SEDIMENT CONTROL PLAN
SWMP PLAN - 01**

K:\PROJECTS\CITY\CO\GRAND JUNCTION\2204-01020_TO\CAD\T2-D-5_FROM ZIP\ODELBERG_DRAIN\507522SH_SWMP_PLAN_D.5.DWG - PLOTTED 1/15/2025 10:44:55 AM BY ROCHELLE HANSEN