

City of Grand Junction | May 14, 2024

▣ **Whitman Park**  
Concept Design Progress

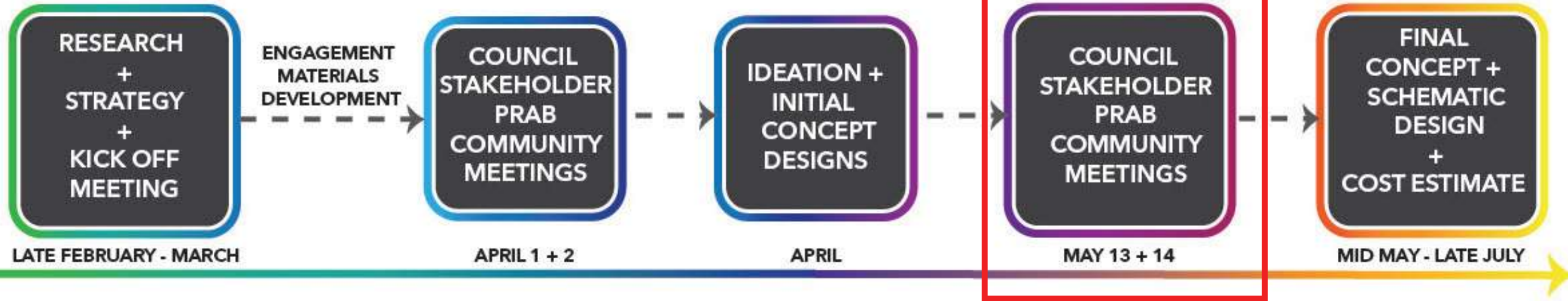
# CITY OF Grand Junction COLORADO



Hines Inc



## PROJECT PROCESS





# Agenda

- Housing Support
- Engagement Process
- Engagement Findings
- Park Design Influences
- Concept Progress





# Housing Support

Over the last 2 years the City of Grand Junction has contributed \$19 million in direct funding to housing support services, while also leveraged an additional \$43 million in contributions from partners, providing over \$62 million in community housing investment.

City of Grand Junction Direct Funding & Grants	
Grand Junction Housing Authority	\$5,043,495
Salt Flats Project	\$3,200,000
Pro Housing - LAP	\$2,000,000
Grand Valley Catholic Outreach	\$1,846,765
Resource Center	\$1,302,025
Housing Resources of Western CO	\$1,161,667
Remaining - ADU & Unassigned 2024	\$1,152,133
Housing Division Operations & Programming	\$1,123,825
Joseph Center	\$947,707
Homeward Bound	\$367,500
Non-Profit & CDBG	\$359,713
Hilltop Family Resources	\$300,000
Habitat for Humanity	\$217,014
<b>Total Direct Funding &amp; Grants</b>	<b>\$19,021,844</b>
<b>Partner Investment</b>	<b>\$43,000,000</b>
<b>Total Investment Generated</b>	<b>\$62,021,844</b>

- Neighbor - 2 - Neighbor Referrals
- Unhoused Needs Assessment
- City Unhoused Initial Strategy
- City Unhoused Implementation Strategy
- Resource Center
- Mother Teresa’s Place
- Launched in 2023
- November 2023
- January 2024 (City Council Presentation)
- April 2024 (City Council Presentation)
- Opened 2024
- Projected to open 2024

# Engagement Process

Whitman Park Process EngageGJ.org  
Community Survey EngageGJ.org  
Community Survey = 940 Responses!

- City Council Presentation #1
- PRAB Engagement Meeting#1
- Focus Group Meeting #1
- Public Engagement Meeting #1
  
- City Council Presentation #2
- PRAB Engagement Session #2
- Focus Group Meeting #2
- Public Engagement Session #2

- Ongoing  
- Mar. 20 - Apr.19

- April 1st  
- April 2nd  
- April 2nd  
- April 2nd

- May 13th  
- May 14th  
- May 14th  
- May 14th





# Engagement Survey Findings Overview

- Most contributors live and work in Grand Junction and visit Downtown 1x a week
- Dining, Shopping, and Events were top reasons for visiting Downtown
- Most contributors visit a city park 1x or more per week
- Most contributors express a desire for improvements to Whitman Park
- Cultural, Geographical, Historical identity of Grand Junction is important in design
- Safety and Lighting were top priorities
- Food and Beverage options were supported
- Park renaming was NOT supported



# Top 10 Desired Programs

Lighting - Safety  
+ Decorative/  
Interactive

①

Pollinator Garden

②

Food Trucks or  
Carts

③

Shade Canopies

④

Multi-Use Event  
Stage

⑤

Seating

⑥

Holiday  
Gathering/  
Holiday  
Lights

⑦

Seasonal Ice  
Rink - likely  
synthetic

⑧

Rec  
Space/  
Climbing  
Features

⑨

Iconic Public  
Art

⑩



# Top 9 Preferred Images



Pollinator Garden



Seating



Multi-use Event Stage



Free Wifi



Seasonal Ice Rink  
(likely synthetic)



Shade Canopies



Food Trucks or Carts



Urban Dog Park



Climbing/ Bouldering



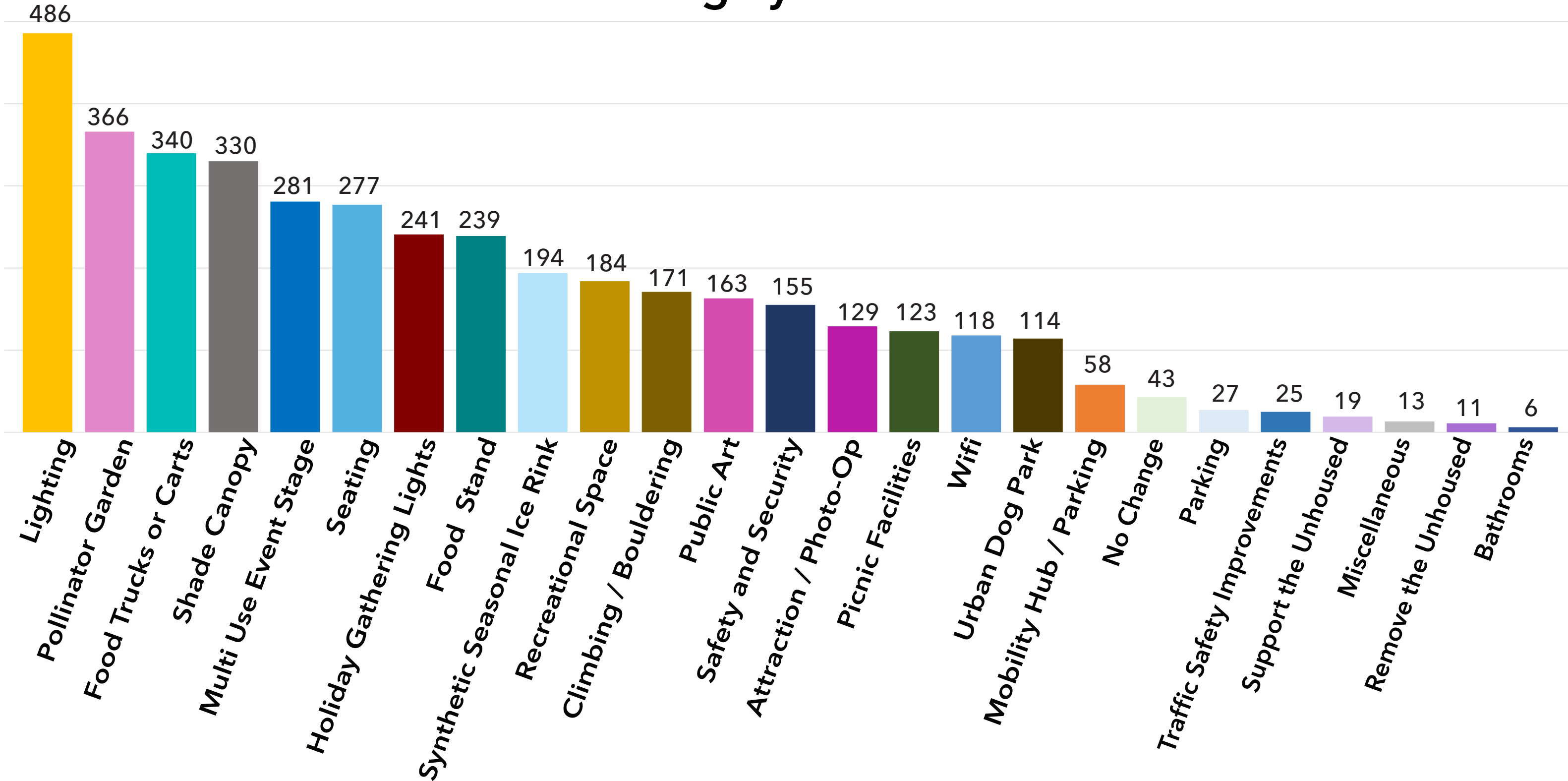
# How do you envision Whitman Park ?

Open Ended Question





# What improvements would encourage you to visit?





# What measures will provide a welcoming and safe park?

Open Ended Question

Alternative amenities

Enforcement of rules

Maintaining cleanliness

Activation Lighting and Visibility

Physical Security

Fencing Unhoused Support

Public Amenities and Infrastructure

Traffic Mitigation and Accessibility

Parking Safe pedestrian access



# What cultural considerations should be included in the park design?

Open Ended Question

**Inclusivity and Community**

**Historical and Cultural**

**Significance**

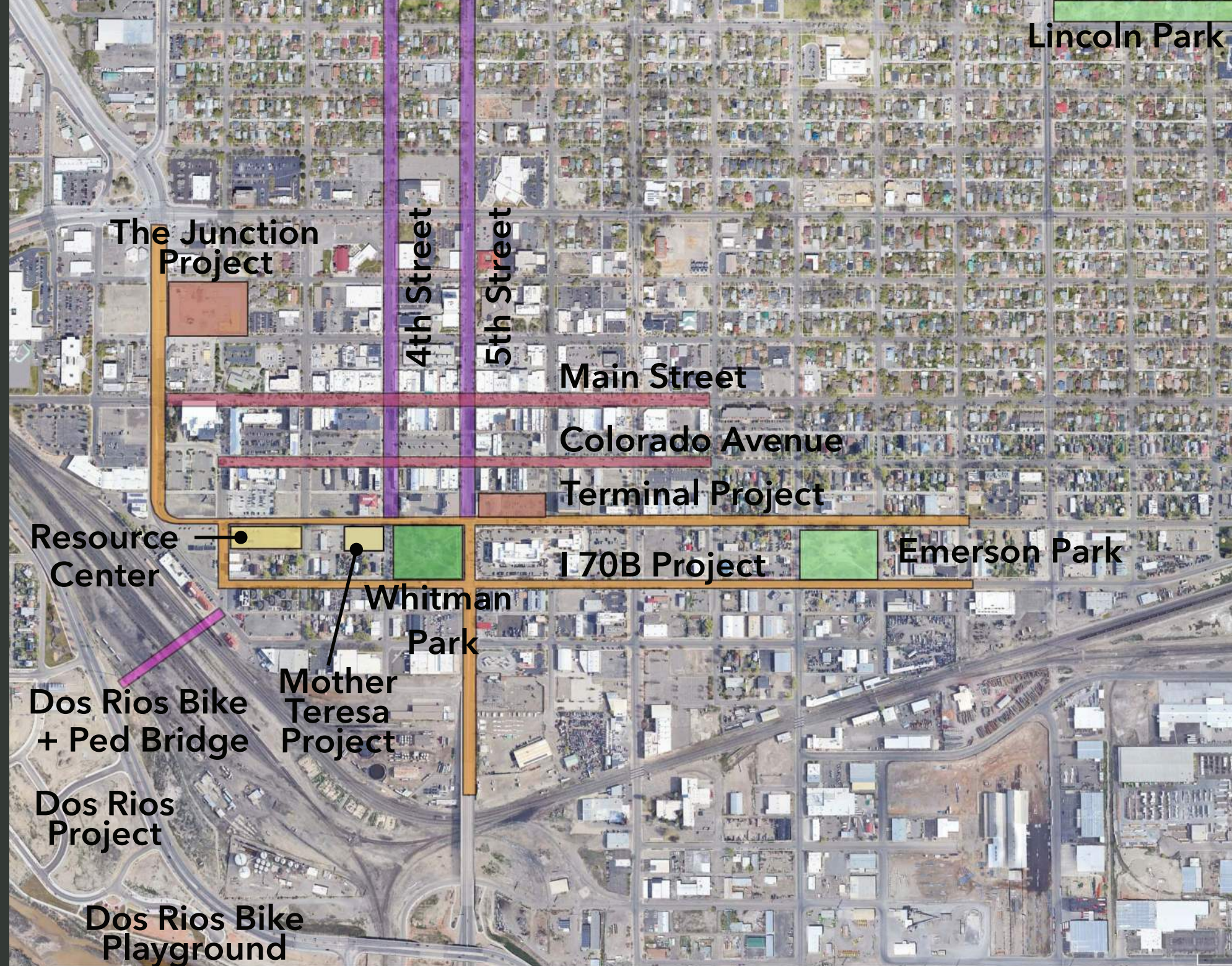
**Natural Environment**      **Safety and Accessibility**

**Educational and Interpretive Elements**



# Park Design Influences

- 2015 Conceptual Plans
- 2020 One Grand Junction Comp Plan
- 2021 Parks, Rec and Open Space MP
- 2022 4th and 5th Street Feasibility Study
- 2023 Pedestrian Bicycle Plan
- 2023 CDOT I-70B Improvement Plans
- 2024 Whitman Park Engagement
- 2024 Whitman Park Tree Survey



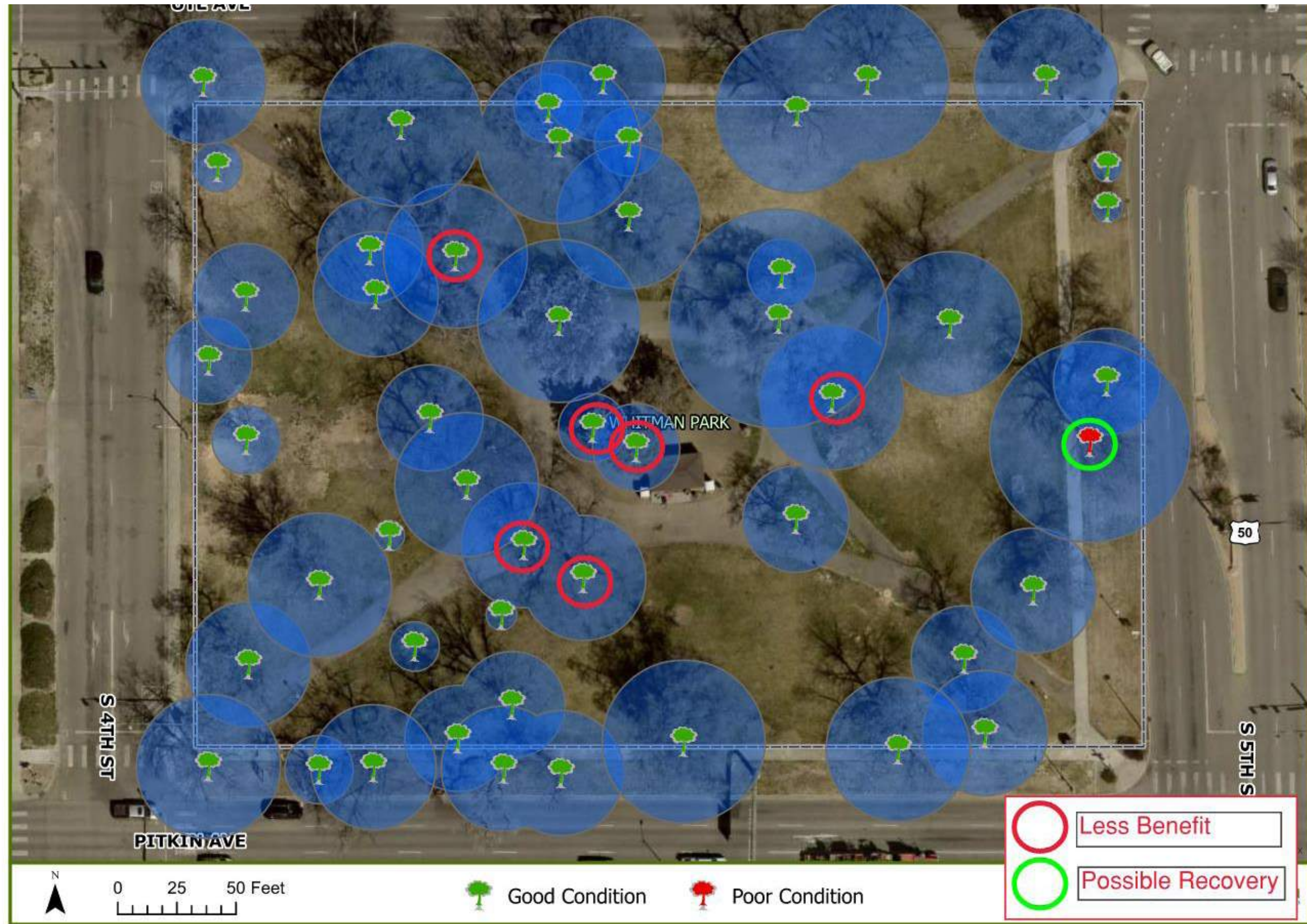
## Movies in the Park

July 18 & August 15

after the Market on Main



# Tree Survey





# Top 10 Desired Programs

Lighting - Safety  
+ Decorative/  
Interactive

①

Pollinator Garden

②

Food Trucks or  
Carts

③

Shade Canopies

④

Multi-Use Event  
Stage

⑤

Seating

⑥

Holiday  
Gathering/  
Holiday  
Lights

⑦

Seasonal Ice  
Rink - likely  
synthetic

⑧

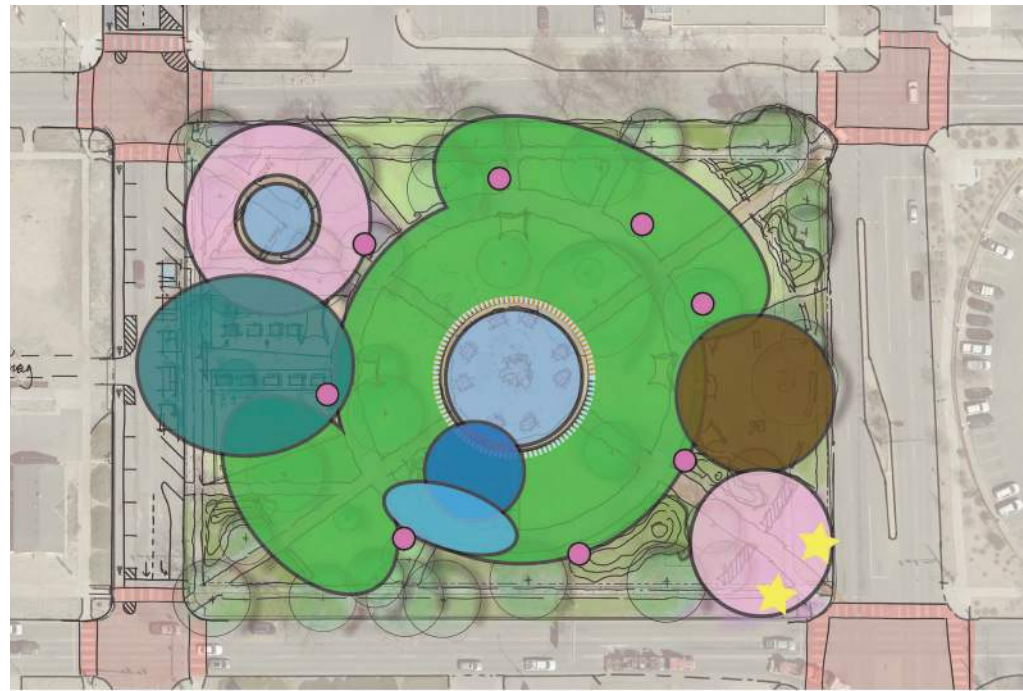
Rec  
Space/  
Climbing  
Features

⑨

Iconic Public  
Art

⑩

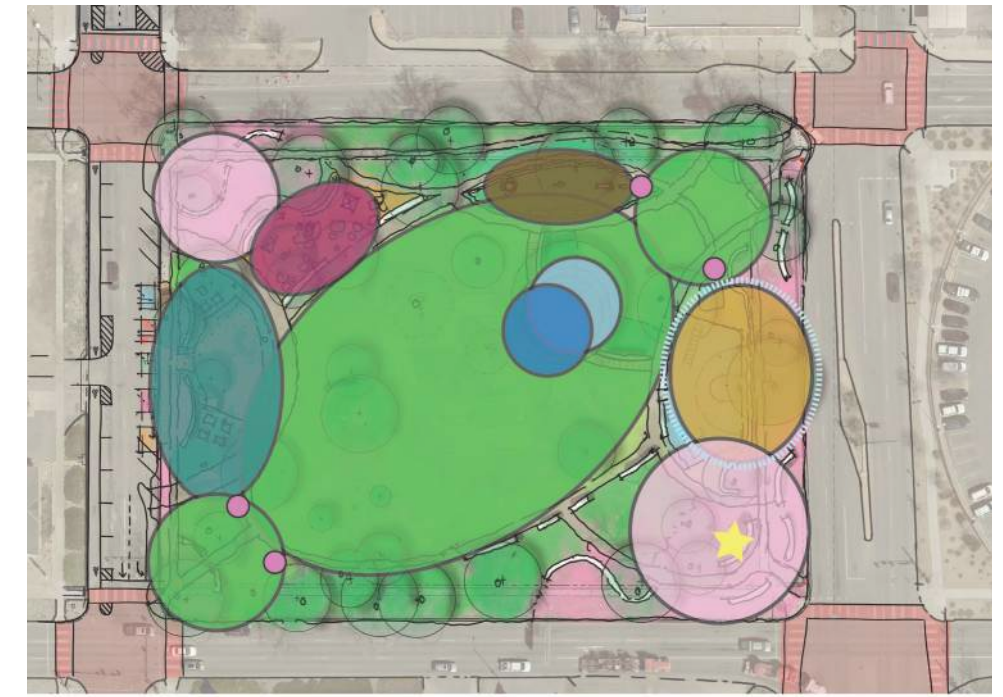




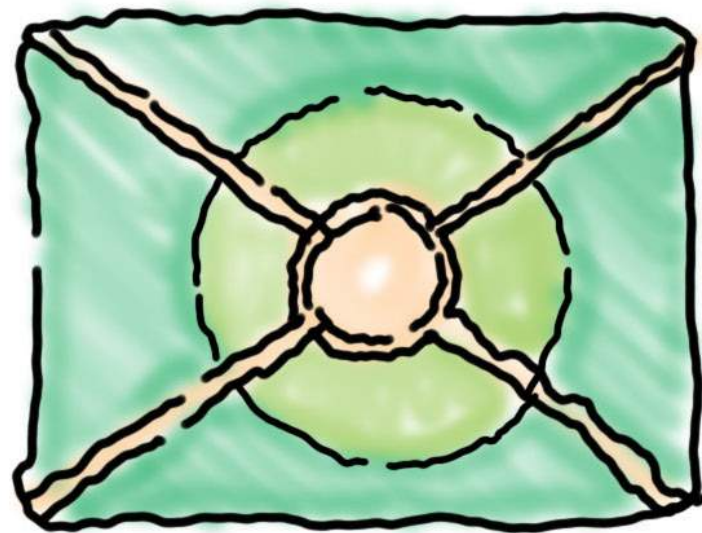
**Option 1 - Honoring the Original**



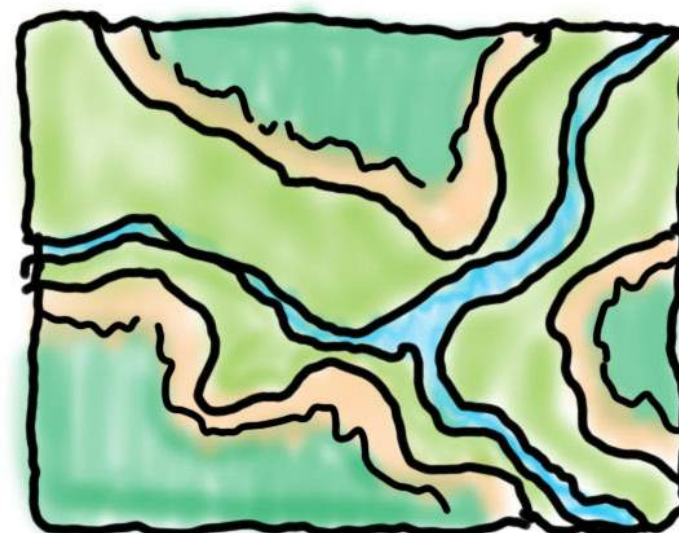
**Option 2 - Grand Geology**



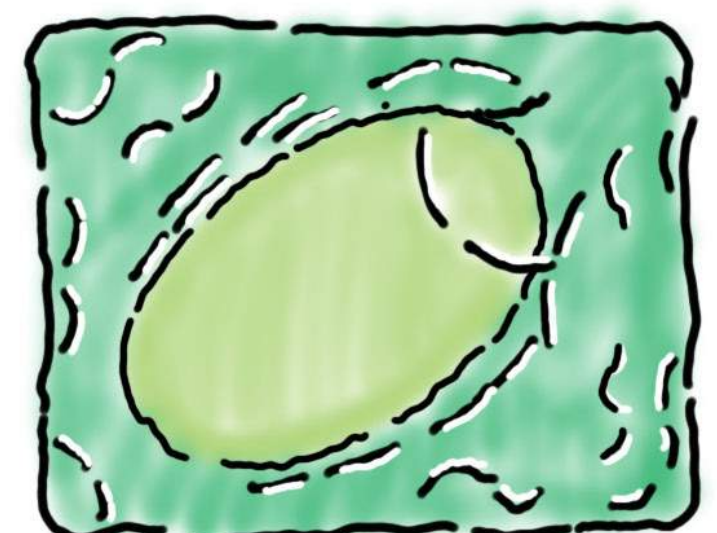
**Option 3 - Downtown Legacy**



**Historical Fromal Layout**

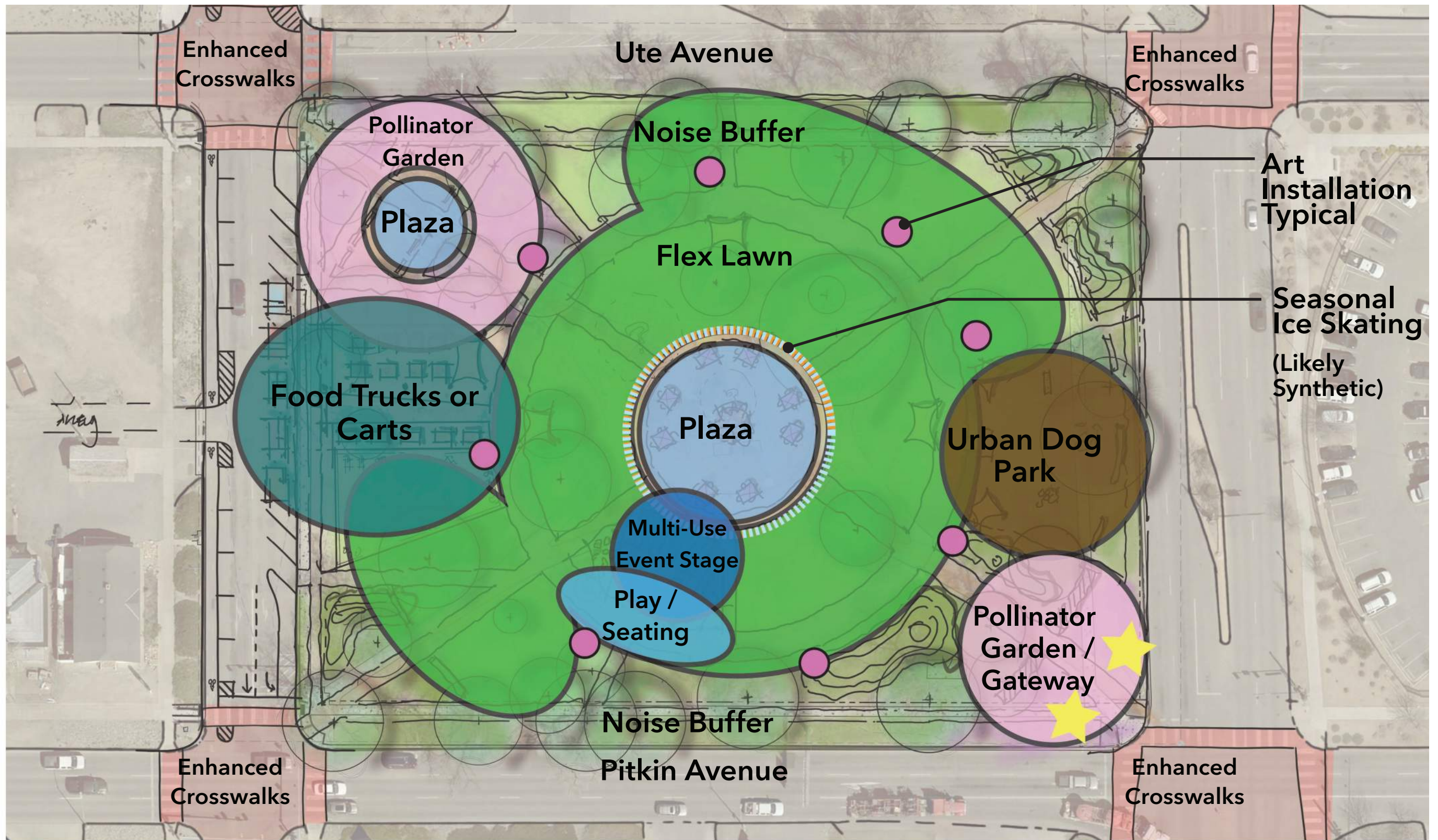


**Bookcliffs, Grand Mesa, CNM, Rivers**



**Brick Walls, Art, and Activity**





Concept 1: Past to Present: Honoring the original forms of the park



## Pollinator Garden

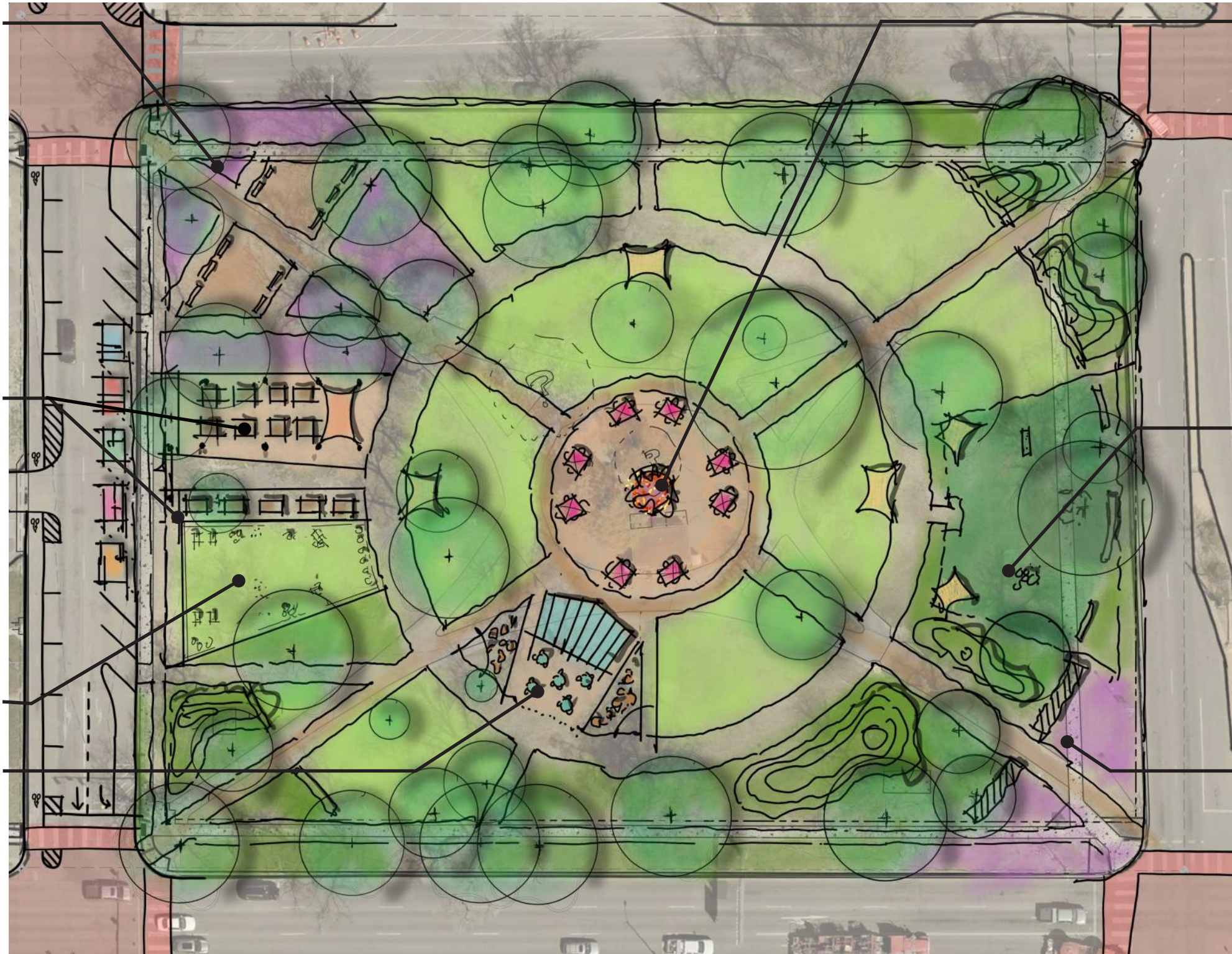


## Food/Seating



## Games

## Multi-Use Stage



## Fire Pit Plaza Spring, Summer, & Fall



## Ice Skating (Likely Synthetic) Winter

## Urban Dog Park



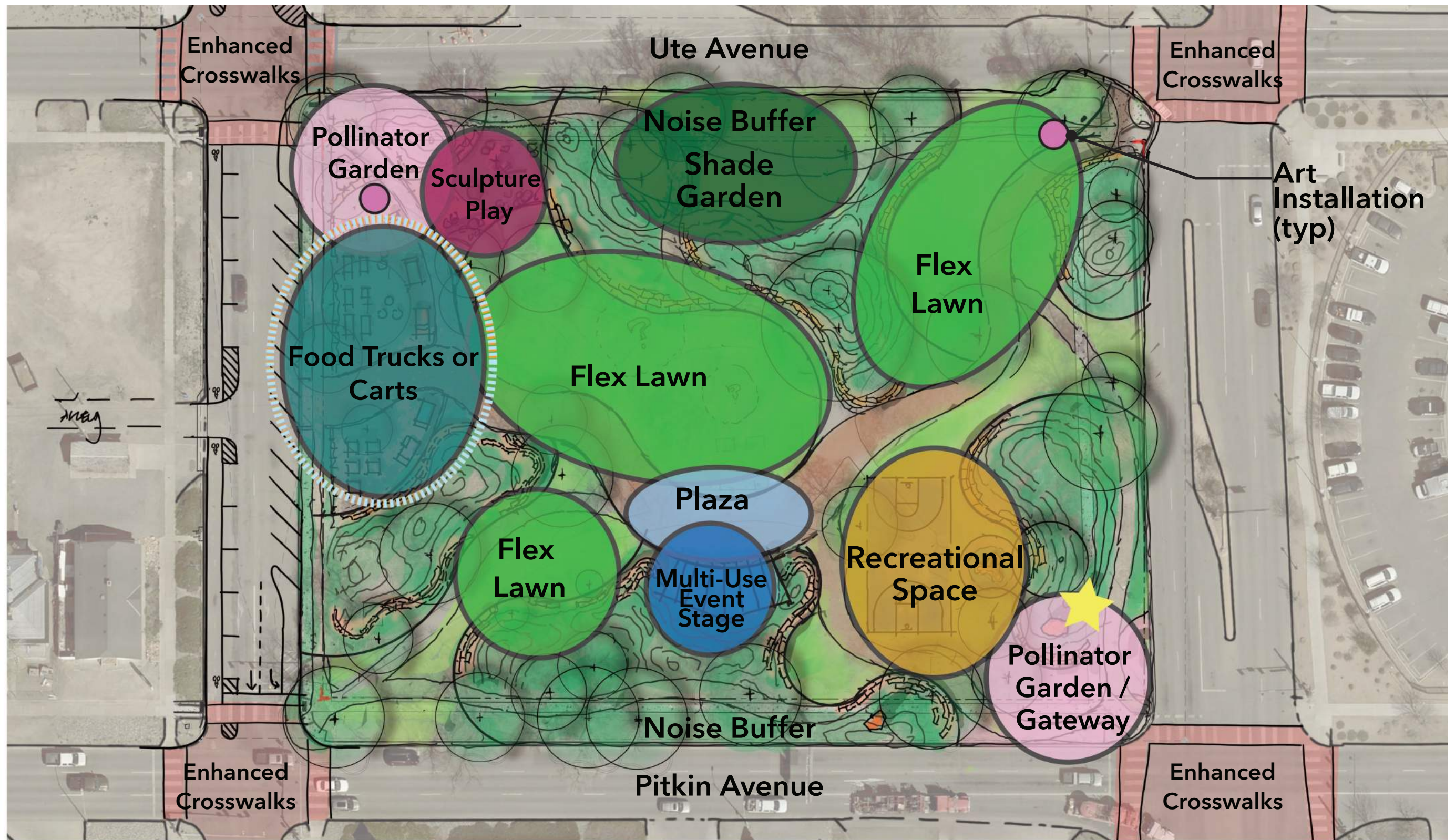
## Gateway



### Assumed Program:

- Shade
- Lighting
- Seating
- Gardens
- Tree Preservation
- Flex Lawn
- Buffer Road Noise
- Ext of Downtown Holiday Lights
- 4th St Parking
- Enhanced Crosswalks





**Concept 2: Grand Geology - Celebrating the context of the valley and the river to create the interest and playful forms.**



Sculptural Play



Recreation/Boulder

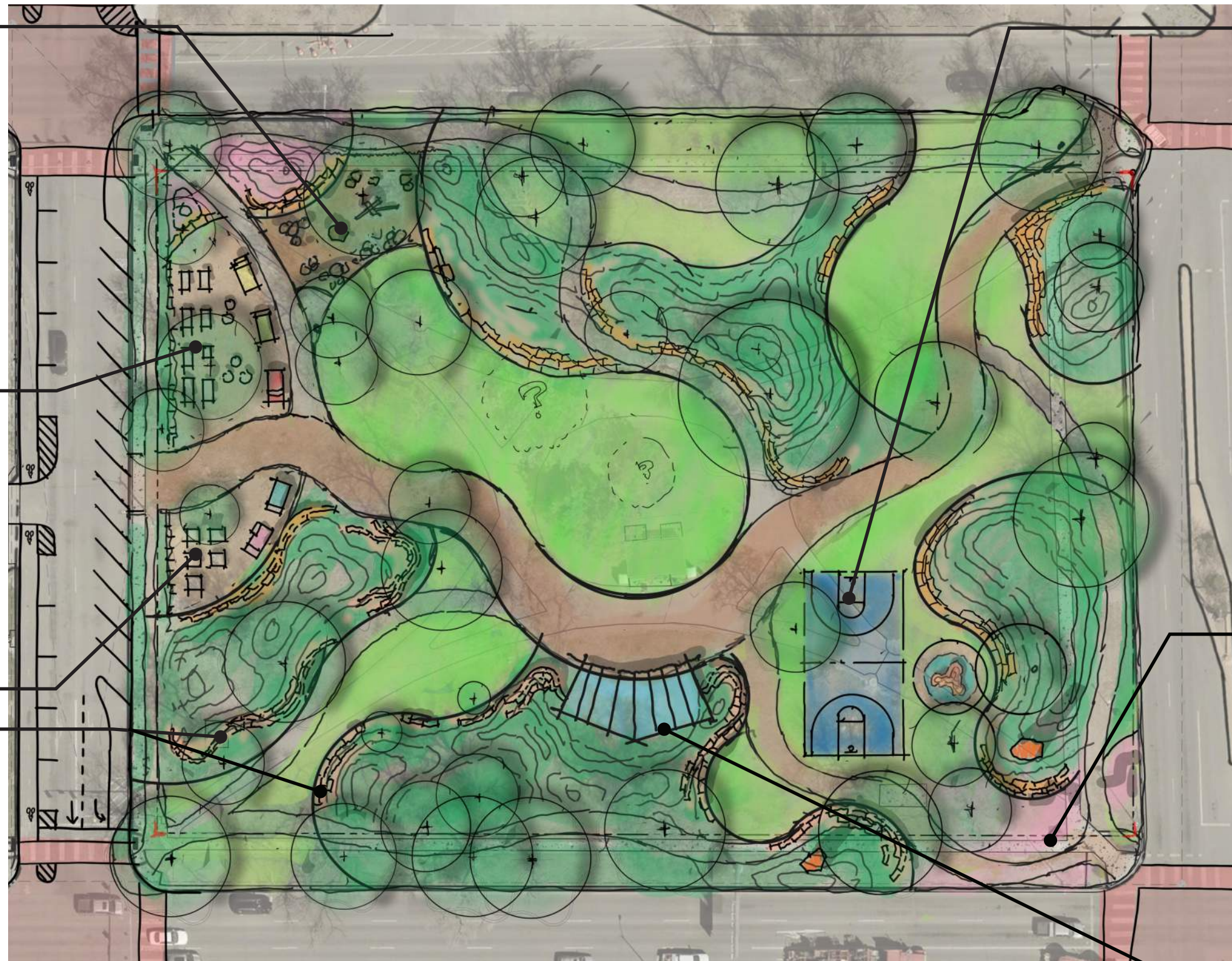


Food/Seating



Games

Tiered Stone Seats



Pollinator Garden

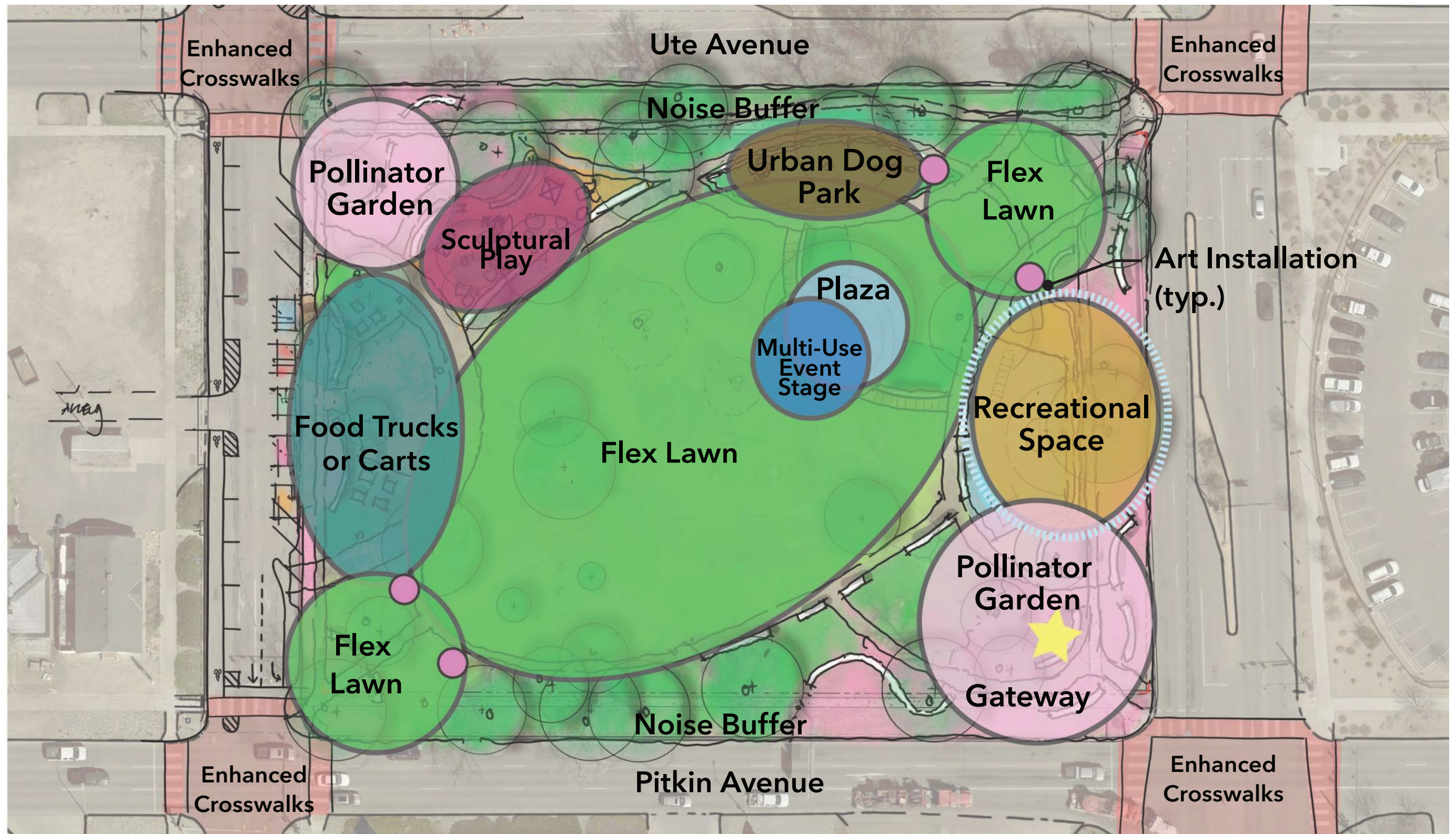


Multi-Use Stage

**Fundamental Program:**

- Shade
- Lighting
- Seating
- Gardens
- Tree Preservation
- Flex Lawn
- Buffer Road Noise
- Ext of Downtown Holiday Lights
- 4th St Parking
- Enhanced Crosswalks





**Concept 3: Continuing the Legacy - Downtown Grand Junction iconic forms and building a physical and visual link.**



### Sculptural Play



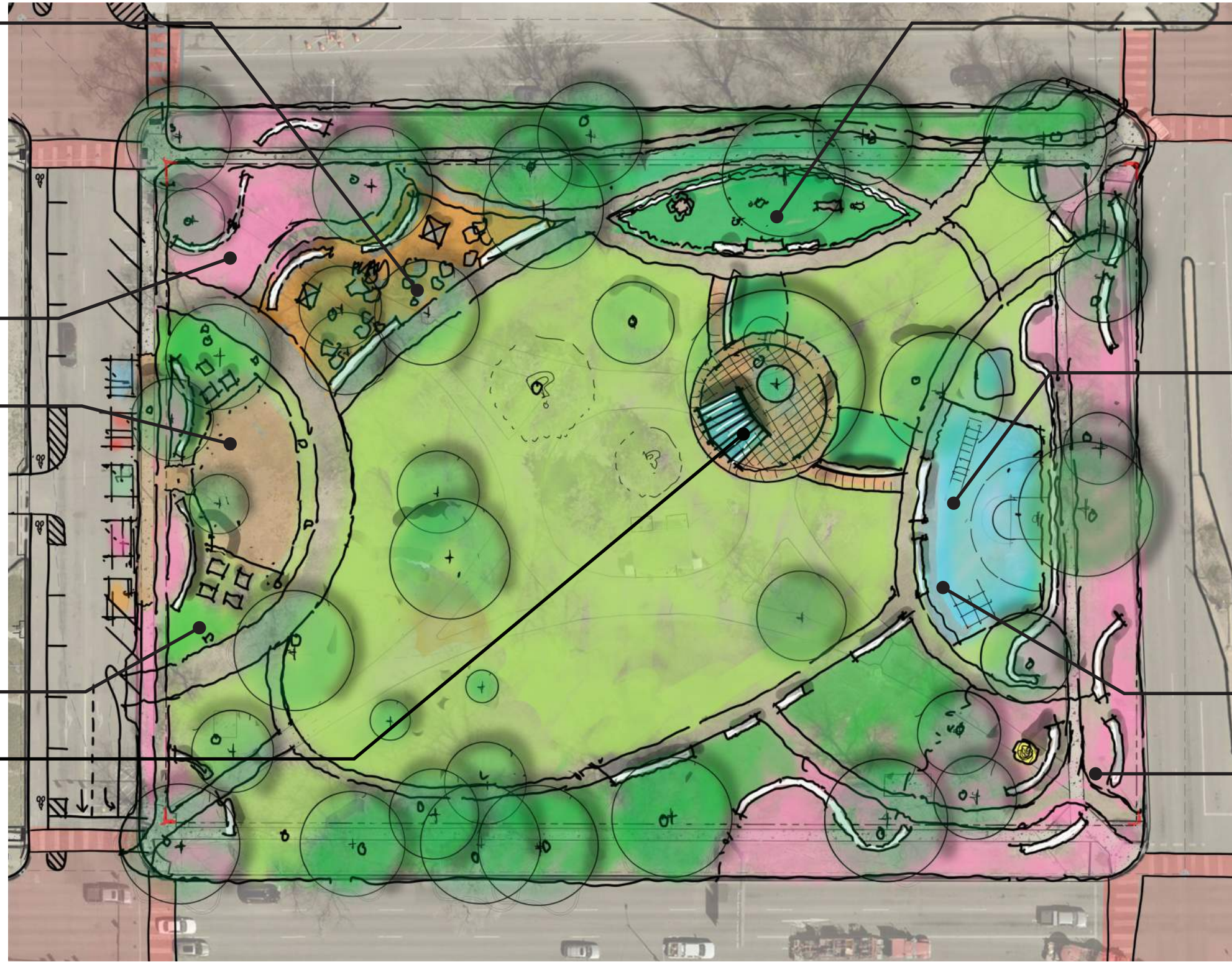
### Pollinator Garden

### Food + Seating



### Games

### Multi-Use Stage



### Urban Dog Park



### Recreation Spring, Summer, & Fall



### Ice Skating (Likely Synthetic) Winter

### Gateway



### Assumed Program:

- Shade
- Lighting
- Seating
- Gardens
- Tree Preservation
- Flex Lawn
- Buffer Road Noise
- Ext of Downtown Holiday Lights
- 4th St Parking
- Enhanced Crosswalks