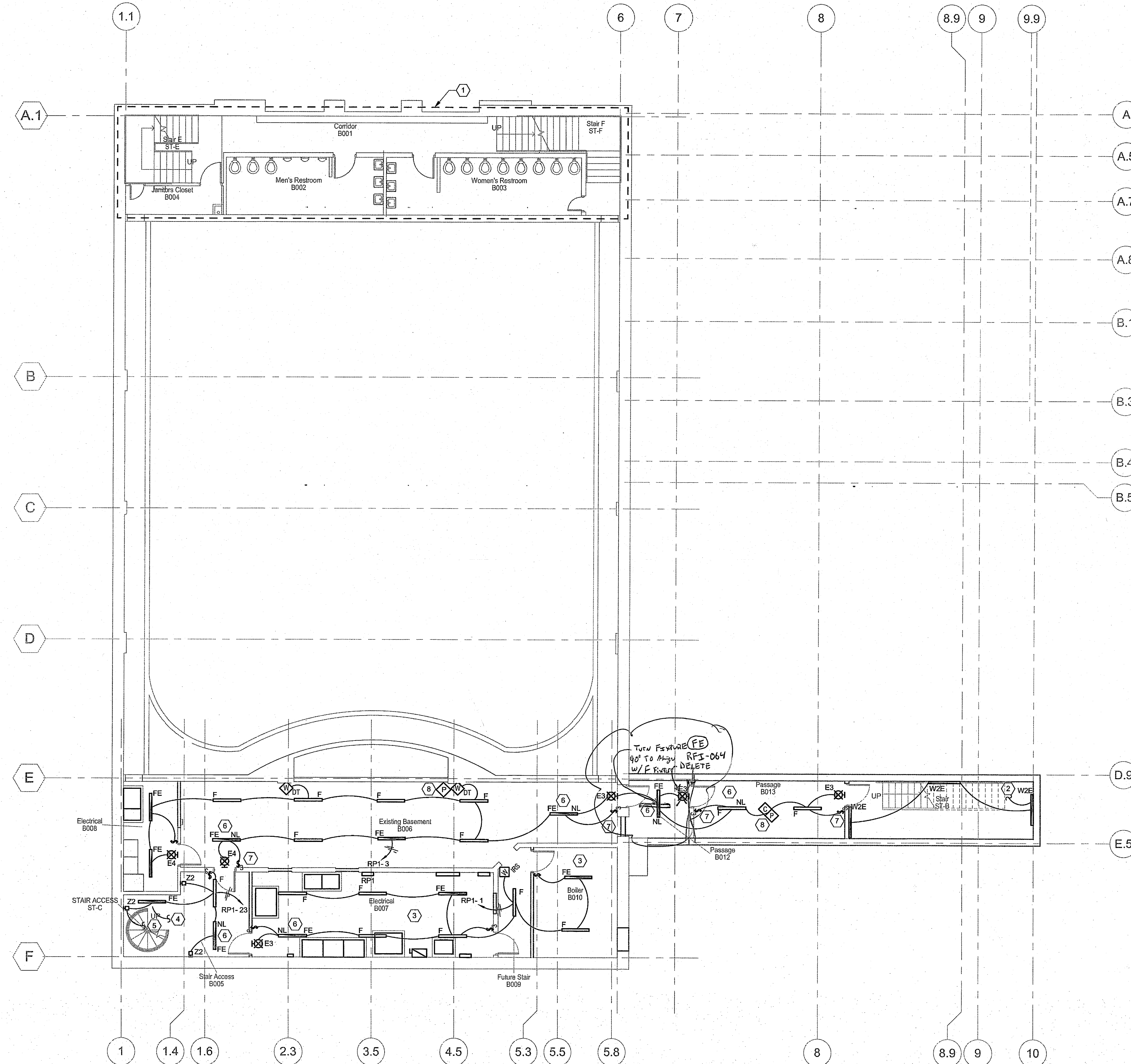


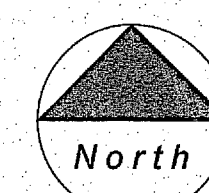
Key Notes

- 1 EXISTING BATHROOM AND CORRIDOR LIGHTING TO REMAIN.
- 2 CIRCUIT CONTINUES TO LIGHT FIXTURE ON FLOOR ABOVE.
- 3 MOUNT LIGHT FIXTURES TO UNISTRUT RACK IN ELECTRICAL ROOM AND BOILER ROOM. ACOUSTIC NOISE BARRIER CEILING SHALL NOT BE PENETRATED. REFER TO POWER PLAN FOR ADDITIONAL INFORMATION.
- 4 CONTROL FROM WORK LIGHT SWITCH AT STAGE LEVEL ABOVE. REFER TO SHEET EL-102.
- 5 CONTROL FROM LIGHT SWITCH AT STAGE LEVEL ABOVE. REFER TO SHEET EL-102.
- 6 "NL" INDICATES AN UNSWITCHED LIGHT FIXTURE SERVING AS NIGHT LIGHT.
- 7 LOW VOLTAGE OVERRIDE DIGITAL WALL SWITCH PER OCCUPANCY SENSOR DETAIL ON SHEET E-503.
- 8 POWER PACK ROOM CONTROLLER PER OCCUPANCY SENSOR DETAIL ON SHEET E-503.

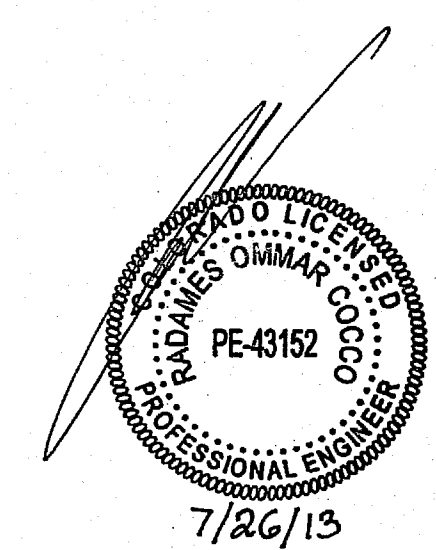
Issued / Revised		
No.	Date	Description
	2/26/13	ISSUED FOR PERMIT



1 BASEMENT LIGHTING PLAN
1/8" = 1'-0"



NOTE:
REFER TO PENETRATION CONTROL DRAWINGS
AND DETAILS FOR PENETRATION RESTRICTIONS
AT ACOUSTICALLY SIGNIFICANT CONSTRUCTION



Avalon Theatre
Addition and Renovation

Commission # 12036.00

Westlake Reed Leskosky

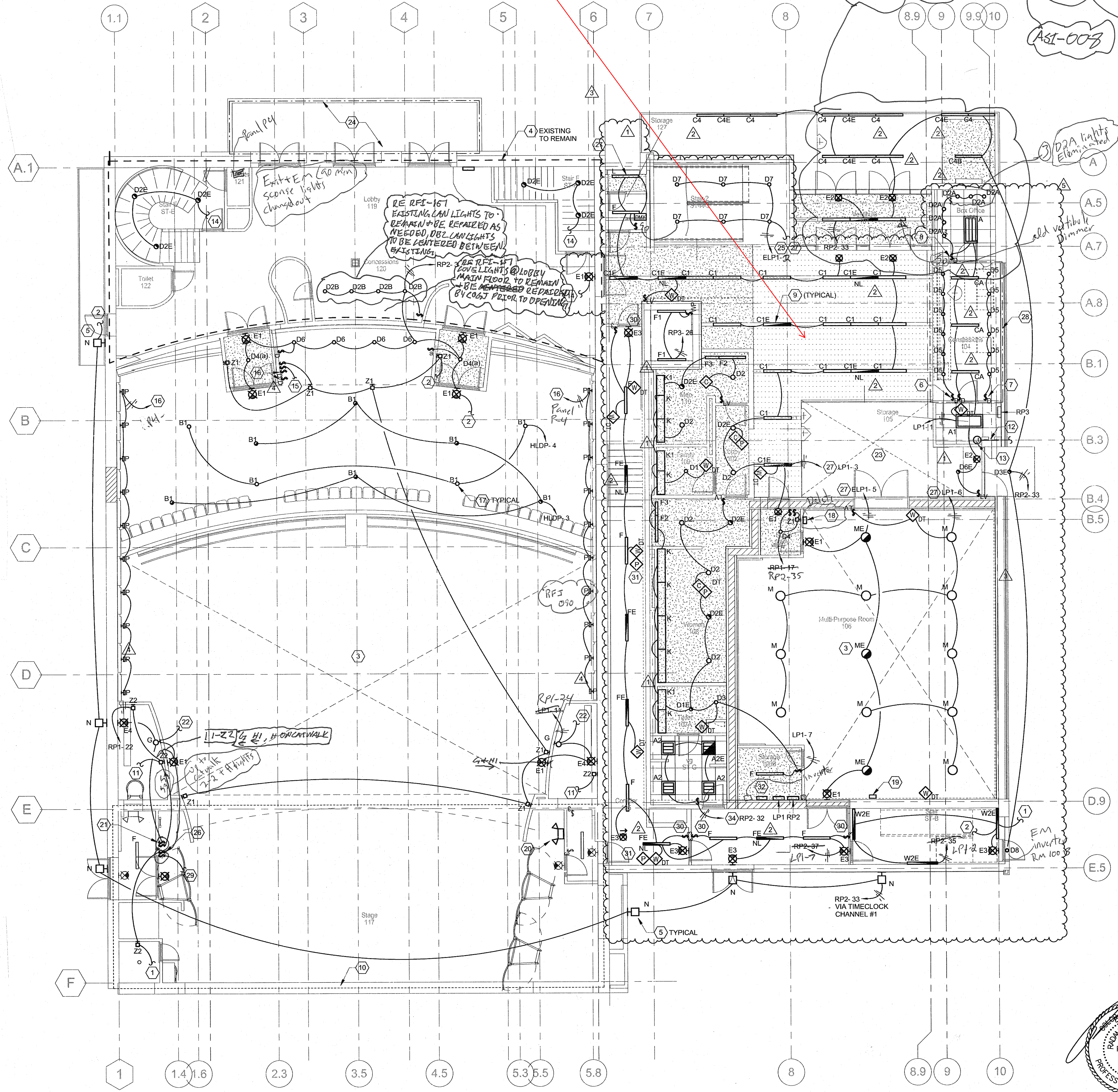
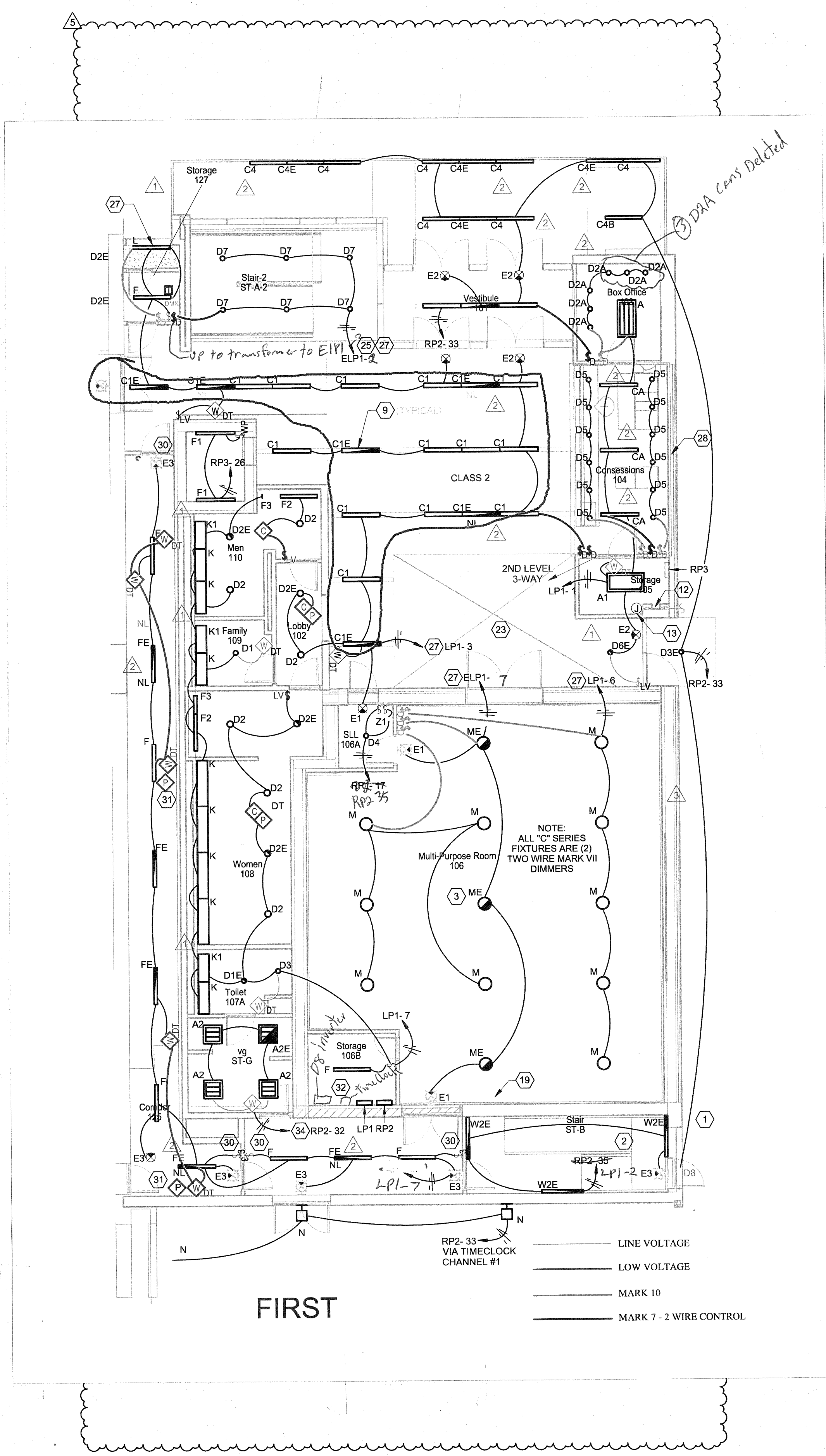
One East Camelback Rd.
Suite 690
Phoenix, AZ 85012
602.212.0451

Copyright Westlake Reed Leskosky

BASEMENT LIGHTING PLAN

CD
EL-101

REF. THE ATTACHED LIGHTING CONTROL
AS-BUILT DRAWINGS FOR LIGHTING CONTROL
AT THE AVALON ADDITION



Issued / Revised No.	Date	Description
1	2/26/13	ISSUED FOR PERMIT
2	3/1/13	Addendum No. 1
3	3/21/13	Addendum No. 2
4	7/26/13	VE/Scope Reductions
5	10/2/13	RFI 90
6	1/17/14	PR - 005

- Key Notes**
- CIRCUIT CONTINUES TO LIGHT FIXTURES ON FLOOR BELOW.
- CIRCUIT CONTINUES TO LIGHT FIXTURES ON FLOOR ABOVE.
- PENDANT FIXTURES MOUNTED AT 20'-0" A.F.F.
- EXISTING LOBBY LIGHTING TO REMAIN. UNLESS NOTED OTHERWISE.
- PROVIDE A WALL PACK WITH PHOTOCELL FIXTURE MOUNTED AT 12' ABOVE GRADE FOR EGRESS LIGHTING.
- CONCESSIONS AREA (5) ZONE DIMMING CONTROLLER. SEE SHEET E-504.
- LOBBY AREA (5) ZONE DIMMING CONTROLLER. SEE SHEET E-504.
- BOX OFFICE, VESTIBULE AND CANOPY (5) ZONE DIMMING CONTROLLER. SEE SHEET E-504.
- FIXTURE MOUNTED IN ARCHITECTURAL CEILING. COORDINATE LOCATION AND INSTALLATION WITH ARCHITECTURAL CONTRACTOR PRIOR TO INSTALLATION.
- EXISTING STAGE AREA LIGHTING TO REMAIN. UNLESS NOTED OTHERWISE.
- CONTINUES UP TO BLUE LED FIXTURES AT CATWALK LEVEL.
- CONTINUES TO HAND-RAIL LIGHTING FIXTURES. REFER TO SITE PLAN FOR ADDITIONAL INFORMATION.
- PROVIDE A HARDWIRED CONNECTION FOR REMOTE HAND-RAIL LED DRIVER. PROVIDE LOCAL MANUAL HAND-RAIL LIGHTING CONTROLS. SWITCHED THROUGH LUTRON LIGHTING CONTROL SYSTEM. SEE SHEET E-504.
- CONNECT TO EXISTING LOCAL CIRCUIT IN THIS AREA. FIELD VERIFY EXISTING CIRCUIT IN PANEL EM FOR LIGHTING IN THIS AREA. PROVIDE SWITCHED LEG AND UNSWITCHED LEG FOR BATTERY SENSING. VERIFY EXISTING CIRCUIT DOES NOT EXCEED 16A ON A 20A/1P CIRCUIT BREAKER.
- CONTROL SWITCH FOR MEZZANINE LEVEL STEP LIGHTING FIXTURES.
- MOUNT 120V 100W POWER SUPPLY FOR THE 120V TYPE FIXTURES IN THE BACK STAGE AREA SHOWN. PROVIDE NEW WALL SCONCE FIXTURE AS CHOSEN BY OWNER (60W MAX - VERIFY). MOUNT TO THE EXISTING JUNCTION BOX. ROUTE POWER TO THE NEW 120V DIMMER SWITCHES LOCATED IN THE CONTROL BOOTH. RE-CONNECT EAST AND WEST SIDE WALL SCONCES TO THE EXISTING 120V CIRCUITS. -ROUTE IN THE CONDUIT TO BACK BOX LOCATED IN WALL SCOT.
- AUDITORIUM LIGHT FIXTURES TO BE FLUSH MOUNTED IN THE CEILING. ROUTE POWER AND 0-10V CONTROL SEPARATELY TO THE HOUSE RELAY PANEL LOCATED IN THE DIMMER ROOM ON THE UPPER MEZZANINE LEVEL. "OMP" IS THE RELAY MODULE NUMBER IN THE HOUSE RELAY PANEL. REFER TO SHEET E-508 FOR MORE INFORMATION.
- PROVIDE A LUTRON GRAPHIC EYE CONTROL PANEL FOR MULTIPURPOSE ROOM SCENE CONTROL. REFER TO LIGHTING CONTROL DIAGRAM ON E-502.
- PROVIDE A LUTRON CONTROL STATION WITH SCENE CONTROL PRESET BUTTONS. REFER TO THE LIGHTING CONTROL DIAGRAM ON E-504.
- PROVIDE NEW EMERGENCY LIGHT TO REPLACE EXISTING BROKEN UNIT. MATCH EXISTING.
- SEPARATE SWITCHES FOR TYPE G AND TYPE Z2 LIGHTS IN ROOMS SLL 118-A AND 118-B.
- CONTINUES UP TO TYPE H FIXTURES AT CATWALK LEVEL.
- SEE SHEET EL-103 FOR LIGHTING IN THIS AREA.
- EXISTING MARQUEE LIGHTING TO REMAIN.
- CONTINUES TO LIGHTING FIXTURES ABOVE.
- CONTROLS WORK LIGHTS AT BASEMENT STAIR AND STAIR ACCESS BELOW.
- STAIR, DISPLAY, AND MULTI-PURPOSE ROOM LIGHTING IS CONTROLLED VIA LUTRON LIGHTING CONTROL SYSTEM. REFER TO SHEET E-504 FOR LUTRON LIGHTING CONTROL DETAILS.
- AREA ABOVE CONCESSIONS IS EXPOSED WITH OPEN CEILINGS. ROUTE RACEWAYS AND INSTALL BACK-BOXES WITHIN SLAB ABOVE FOR FUTURE LIGHTING FIXTURES. COORDINATE LOCATIONS OF FUTURE LIGHTING FIXTURES WITH ARCHITECTURAL AND MECHANICAL PRIOR TO INSTALLATION. COORDINATE CONDUITS IN SLAB WITH STRUCTURAL AND THE CONDUITS INSTALLED FOR THE MEZZANINE LEVEL CONCESSIONS AREA POWER REQUIREMENTS.
- CONTROLS BLUE LED FIXTURE AT STAIR BELOW.
- LOW VOLTAGE OVERRIDE DIGITAL WALL SWITCH PER OCCUPANCY SENSOR DETAIL ON SHEET E-503.
- POWER PACK ROOM CONTROLLER PER OCCUPANCY SENSOR DETAIL ON SHEET E-503.
- PROVIDE A DIGITAL 2 CHANNEL, 365/7 DAY ASTRONOMICAL TIME CLOCK WITH 30 A. CONTACT RATING (TORK #DW2008 OR APPROVED EQUAL) FOR EXTERIOR LIGHTING CONTROL.
- SUSPEND FIXTURES AT 10'-0" AFF.
- FOR DRESSING ROOM LIGHTING CONTROLS REFER TO SHEET E-506.

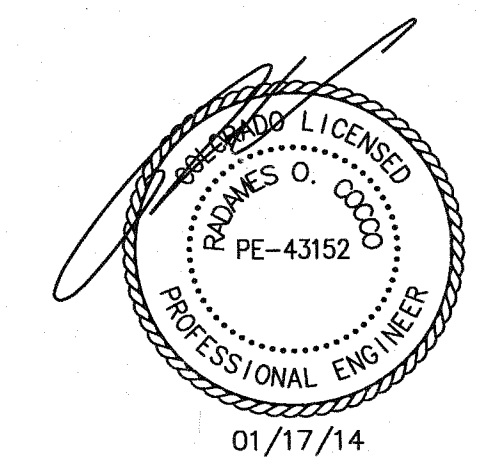
**Avalon Theatre
Addition and Renovation**

Commission # 12036.00
Westlake Reed Leskosky

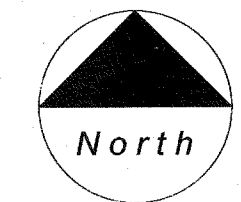
One East Camelback Rd.
Suite 690
Phoenix, AZ 85012
602.212.0451

Copyright Westlake Reed Leskosky

**FIRST FLOOR LIGHTING
PLAN**



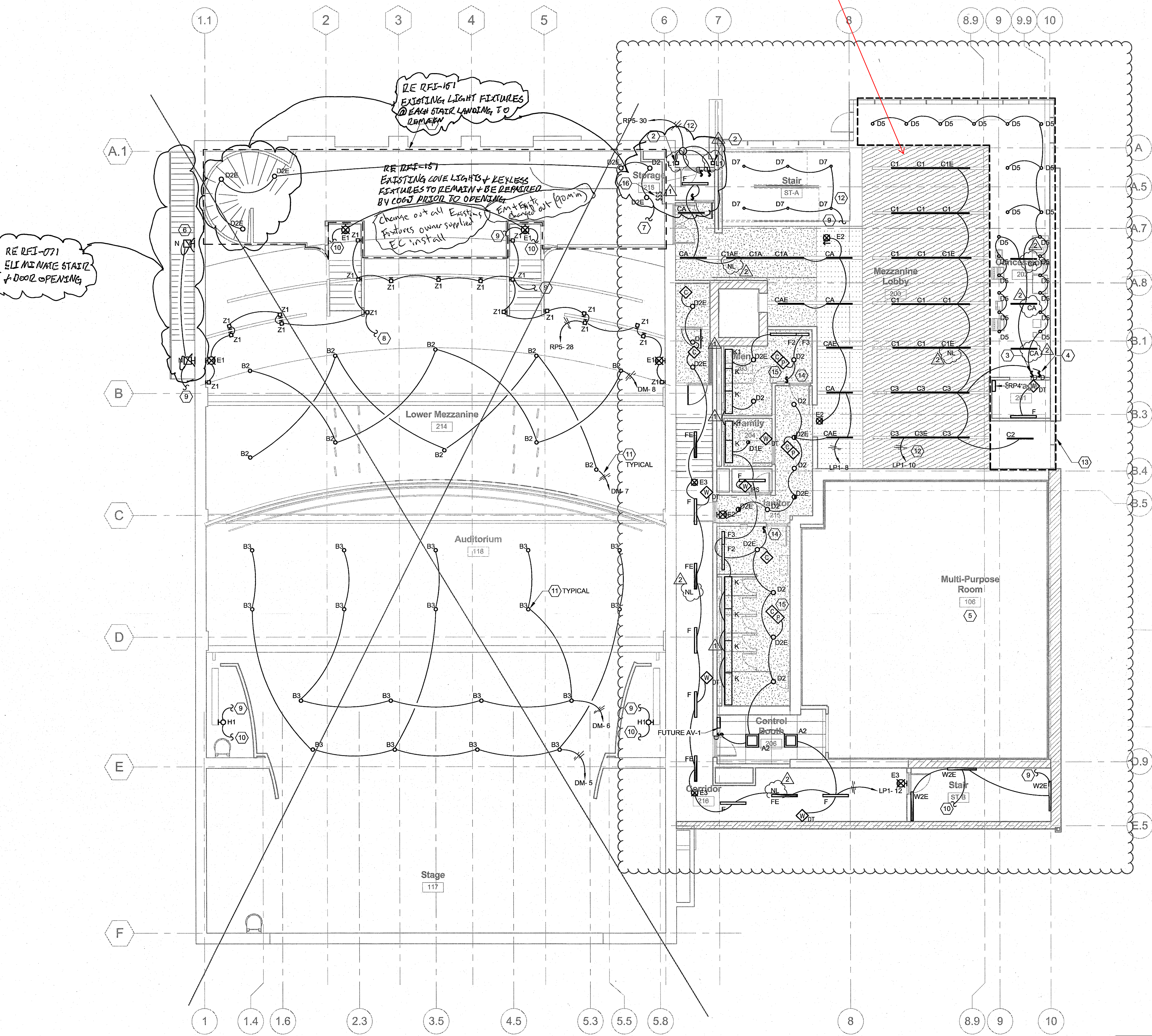
2 FIRST FLOOR LIGHTING PLAN
1/8" = 1'-0"



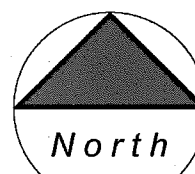
NOTE:
REFER TO PENETRATION CONTROL DRAWINGS
AND DETAILS FOR PENETRATION RESTRICTIONS
AT ACOUSTICALLY SIGNIFICANT CONSTRUCTION.

CD
EL-102

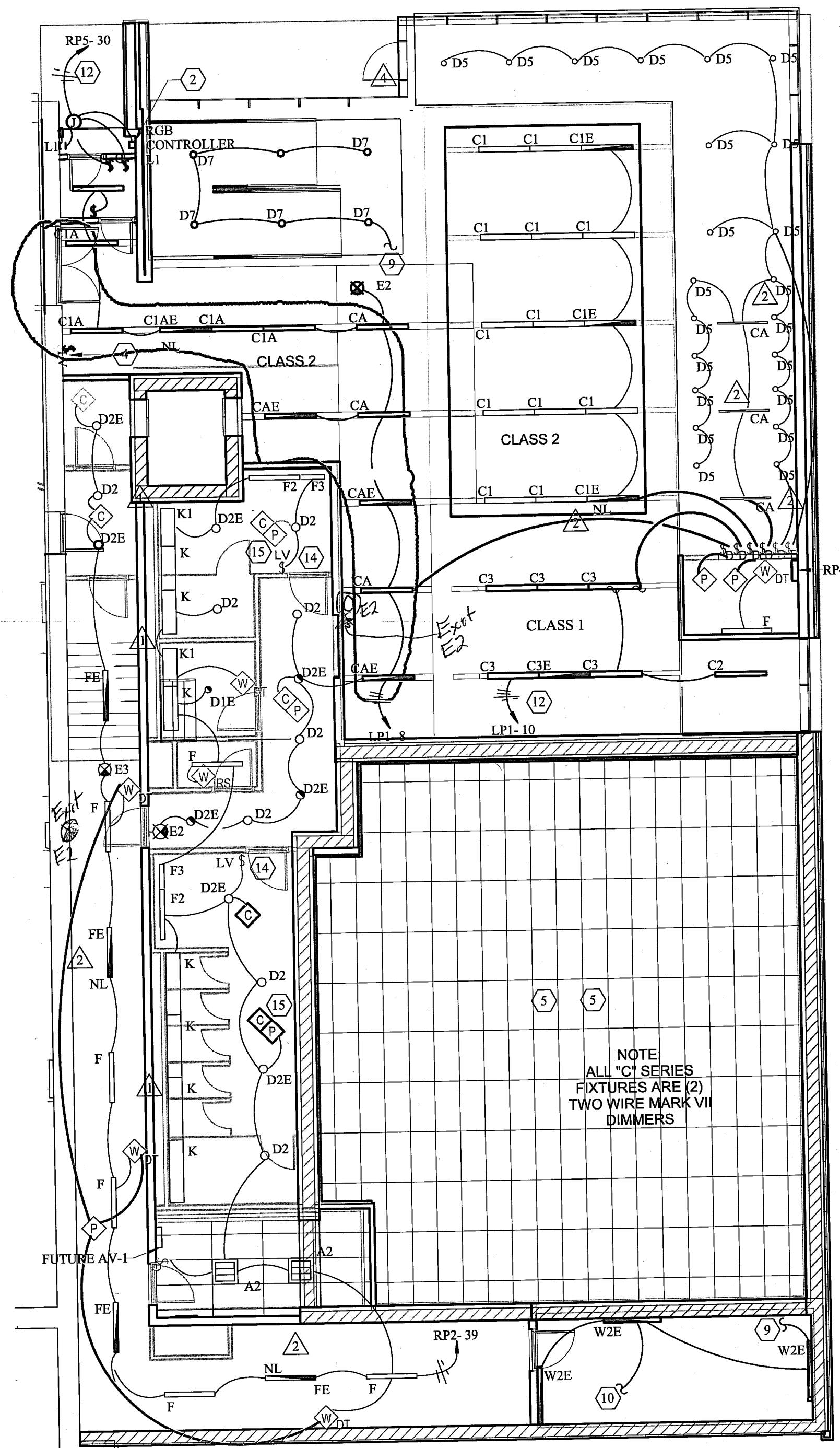
REF. THE ATTACHED LIGHTING CONTROL
AS-BUILT DRAWINGS FOR LIGHTING CONTROL
AT THE AVALON ADDITION



1 MEZZANINE LIGHTING PLAN
1/8" = 1'-0"



- Key Notes**
- EXISTING LOBBY LIGHTING TO REMAIN. INTERCEPT FEEDER TO EVERY THIRD FIXTURE AND ROUTE TO NEW EMERGENCY CIRCUIT.
 - PROVIDE HARDWIRED CONNECTION FOR LED LIGHT TUBE POWER SUPPLY. VERIFY DIMMER SWITCH LOCATION PRIOR TO ROUGH-IN.
 - CONCESSION AREA (3) ZONE DIMMING LIGHTING CONTROLLER. REFER TO SHEET E-504.
 - MEZZANINE LOBBY (5) ZONE DIMMING LIGHTING CONTROLLER. REFER TO SHEET E-504.
 - REFER TO SHEET EL-102 FOR MULTI-PURPOSE ROOM LIGHTING INFORMATION.
 - PROVIDE A WALL PACK WITH PHOTOCELL FIXTURE MOUNTED AT 12' ABOVE LANDING FOR EGRESS LIGHTING.
 - CONNECT TO EXISTING LOCAL CIRCUIT IN THIS AREA. FIELD VERIFY EXISTING CIRCUIT IN PANEL EM FOR LIGHTING IN THIS AREA. PROVIDE SWITCHED LEG AND UNSWITCHED LEG FOR BATTERY SENSING. VERIFY EXISTING CIRCUIT DOES NOT EXCEED 16A ON A 20A/1P CIRCUIT BREAKER.
 - CONTINUES DOWN TO CONTROL SWITCH LOCATED IN SOUND BOOTH BELOW.
 - CIRCUIT CONTINUES TO LIGHT FIXTURES ON FLOOR BELOW.
 - CIRCUIT CONTINUES TO LIGHT FIXTURES ON FLOOR ABOVE.
 - AUDITORIUM DOWN LIGHTS TO BE FLUSH MOUNTED IN THE CEILING. ROUTE POWER AND 0-10V CONTROL SEPARATELY TO THE HOUSE RELAY PANEL LOCATED IN THE DIMMER ROOM ON THE UPPER MEZZANINE LEVEL. TWP IS THE RELAY MODULE NUMBER IN THE HOUSE RELAY PANEL. REFER TO SHEET E-508 FOR MORE INFORMATION.
 - LOBBY, STAIRS, DISPLAY, AND CONCESSIONS LIGHTING IS CONTROLLED VIA LUTRON LIGHTING CONTROL SYSTEM. REFER TO SHEET E-504 FOR LUTRON LIGHTING CONTROL DETAILS.
 - THIS AREA IS ARCHITECTURALLY SENSITIVE WITH OPEN CEILINGS AND GLASS AREAS. ROUTE RACEWAYS AND INSTALL JUNCTION BOXES SERVING LUMINAIRES IN CONCRETE SLAB ABOVE. REFERENCE SHEET AE-303 FOR ADDITIONAL INFORMATION.
 - LOW VOLTAGE OVERRIDE DIGITAL WALL SWITCH PER OCCUPANCY SENSOR DETAIL ON SHEET E-503.
 - POWER PACK ROOM CONTROLLER PER OCCUPANCY SENSOR DETAIL ON SHEET E-503.
 - EXISTING LIGHT SWITCHES RELOCATED FROM WALL BEING REMOVED. COORDINATE EXACT LOCATION WITH OWNER PRIOR TO INSTALLATION.



MEZZ 1

LINE VOLTAGE
LOW VOLTAGE
MARK 10
MARK 7 - 2 WIRE CONTROL

NOTE:
REFER TO PENETRATION CONTROL DRAWINGS
AND DETAILS FOR PENETRATION RESTRICTIONS
AT ACOUSTICALLY SIGNIFICANT CONSTRUCTION

Issued / Revised		
No.	Date	Description
1	2/26/13	ISSUED FOR PERMIT
1	3/11/13	ADDENDUM No. 1
2	3/21/13	ADDENDUM No. 2

3/3/14 PR-006 Addition - Complete Build-Out

CD
EL-103

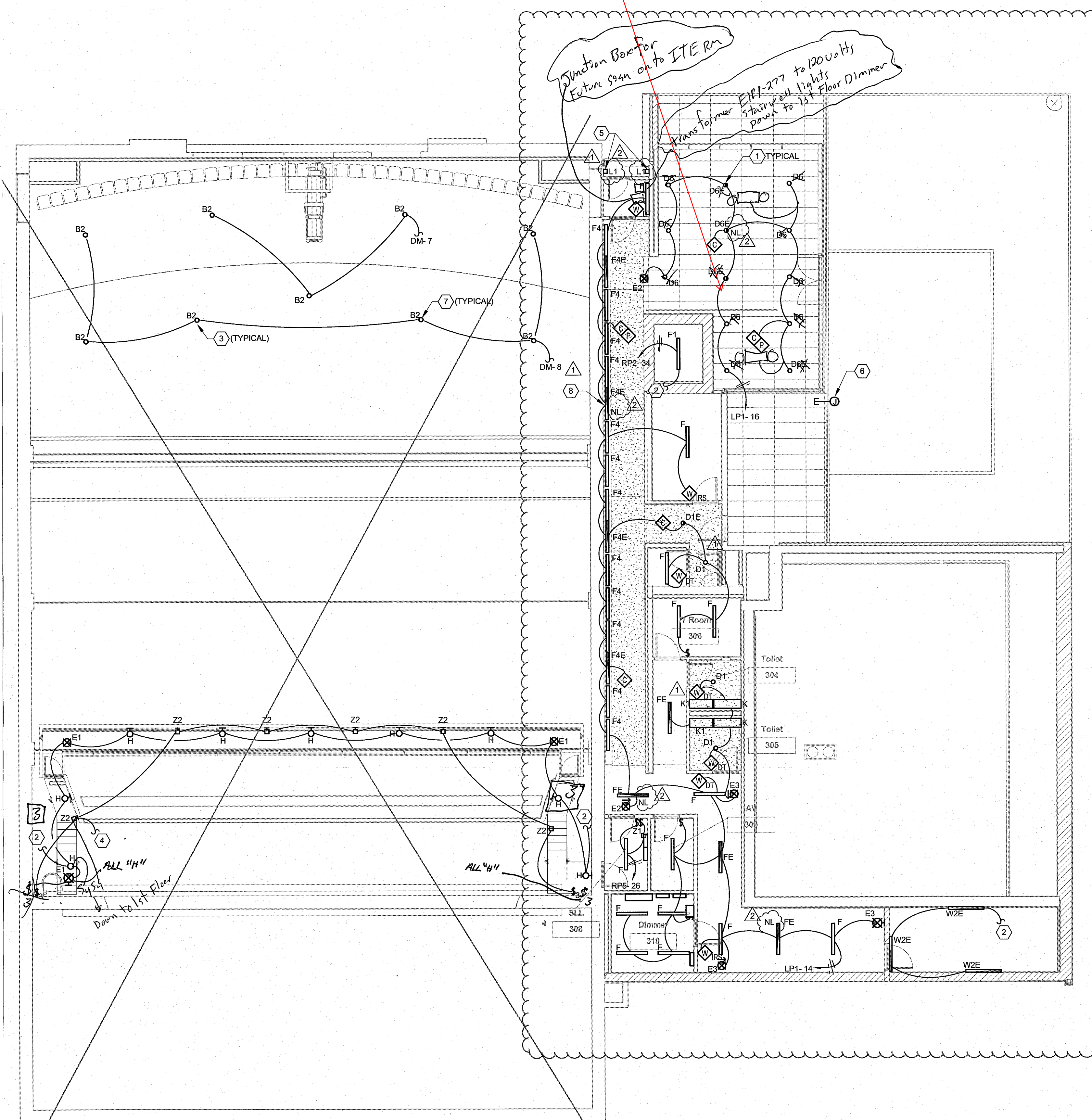
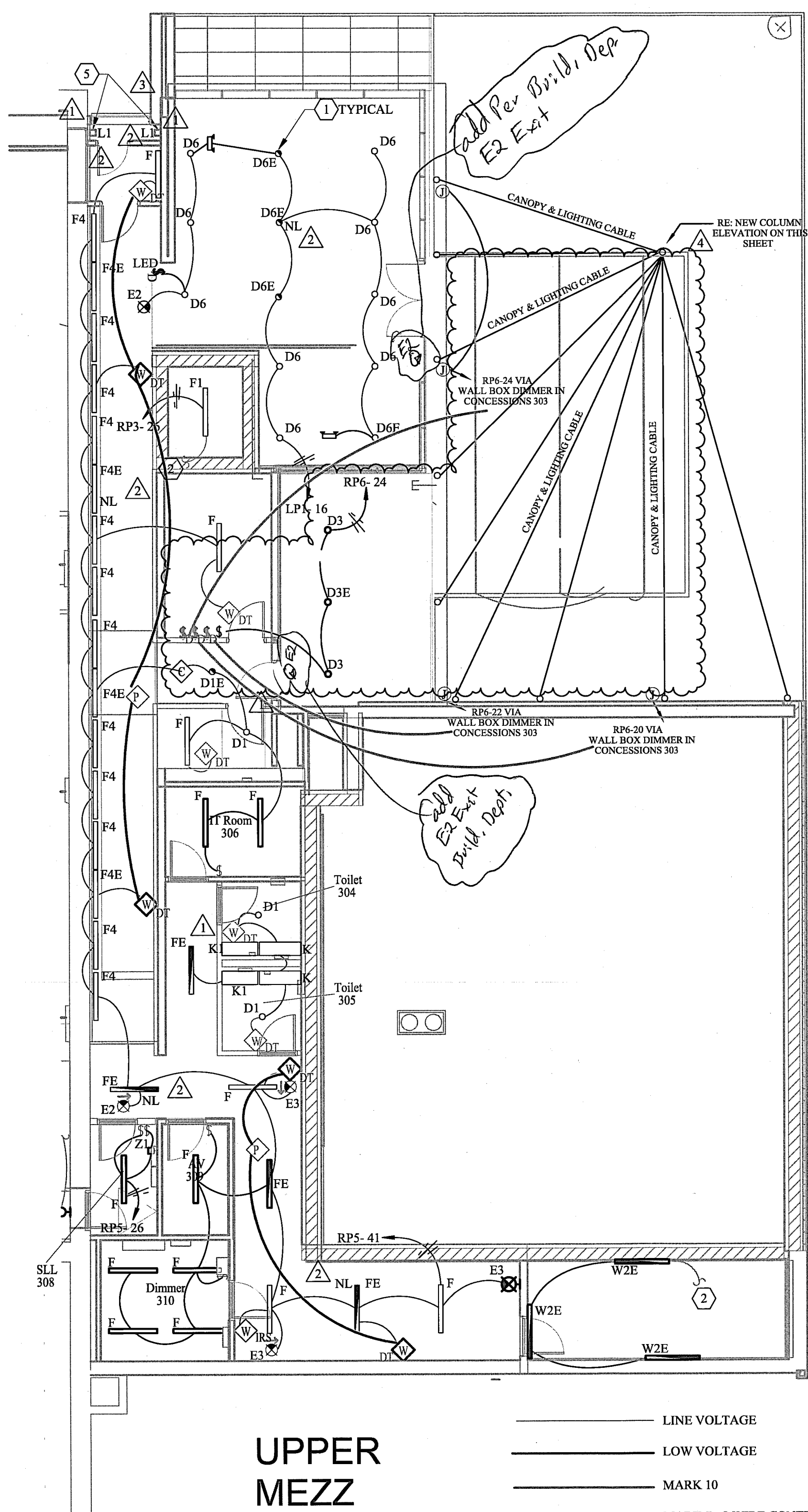
REF. THE ATTACHED LIGHTING CONTROL AS-BUILT DRAWINGS FOR LIGHTING CONTROL AT THE AVALON ADDITION

Key Notes

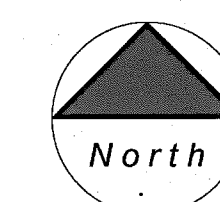
- 1 ALL FIXTURE HOUSINGS, BOXES, CONDUITS, AND MOUNTING HARDWARE SHALL BE PAINTED BLACK ABOVE ARCHITECTURAL CEILING ELEMENTS AT TERRACE LOBBY.
- 2 CIRCUIT CONTINUES TO LIGHT FIXTURES ON LEVEL BELOW.
- 3 NEW HOUSE LIGHT. REPAIR CEILING AS REQUIRED.
- 4 CONTINUES DOWN TO BLUE LED FIXTURES AT STAGE LEVEL BELOW.
- 5 CONTINUOUS VERTICAL RUN OF LED LIGHT TUBE FROM BELOW.
- 6 PROVIDE FLUSH MOUNTED EMPTY BACK BOX WITH BLANK WEATHER PROOF COVER FOR FUTURE EXIT SIGN AND 3/4" CONDUIT STUBBED INTO CEILING SPACE AS INDICATED.
- 7 AUDITORIUM DOWN LIGHTS TO BE FLUSH MOUNTED IN THE CEILING. ROUTE POWER AND 0-10V CONTROL SEPARATELY TO THE HOUSE RELAY PANEL LOCATED IN THE DIMMER ROOM ON THE UPPER MEZZANINE LEVEL. "DM" IS THE RELAY MODULE NUMBER IN THE HOUSE RELAY PANEL. REFER TO SHEET E-508 FOR MORE INFORMATION.
- 8 REFER TO DETAIL 16 ON SHEET AE-551 FOR CORRIDOR LIGHTING OUTLINE DETAIL.

Issued / Revised			Description
No.	Date		
1	2/26/13		ISSUED FOR PERMIT
1	3/11/13		ADDENDUM No. 1
2	3/21/13		ADDENDUM No. 2

3/3/14 PR-006 Addition - Complete Build-Out

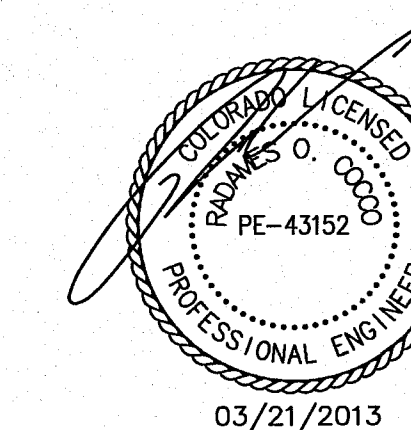


1 UPPER MEZZANINE LIGHTING PLAN
1/8" = 1'-0"



NOTE:

REFER TO PENETRATION CONTROL DRAWINGS AND DETAILS FOR PENETRATION RESTRICTIONS AT ACOUSTICALLY SIGNIFICANT CONSTRUCTION.



Avalon Theatre
Addition and Renovation

Commission # 12036.00

Westlake Reed Leskosky

One East Camelback Rd.
Suite 690
Phoenix, AZ 85012
602.212.0451

Copyright Westlake Reed Leskosky

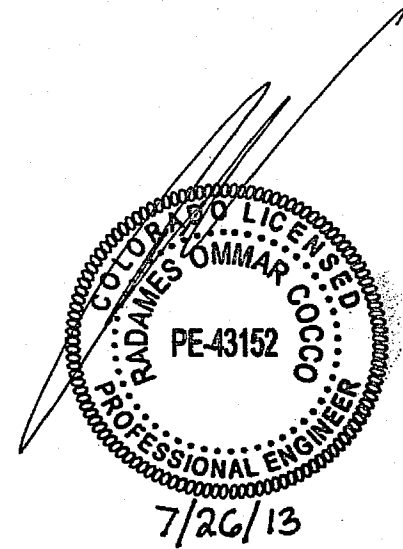
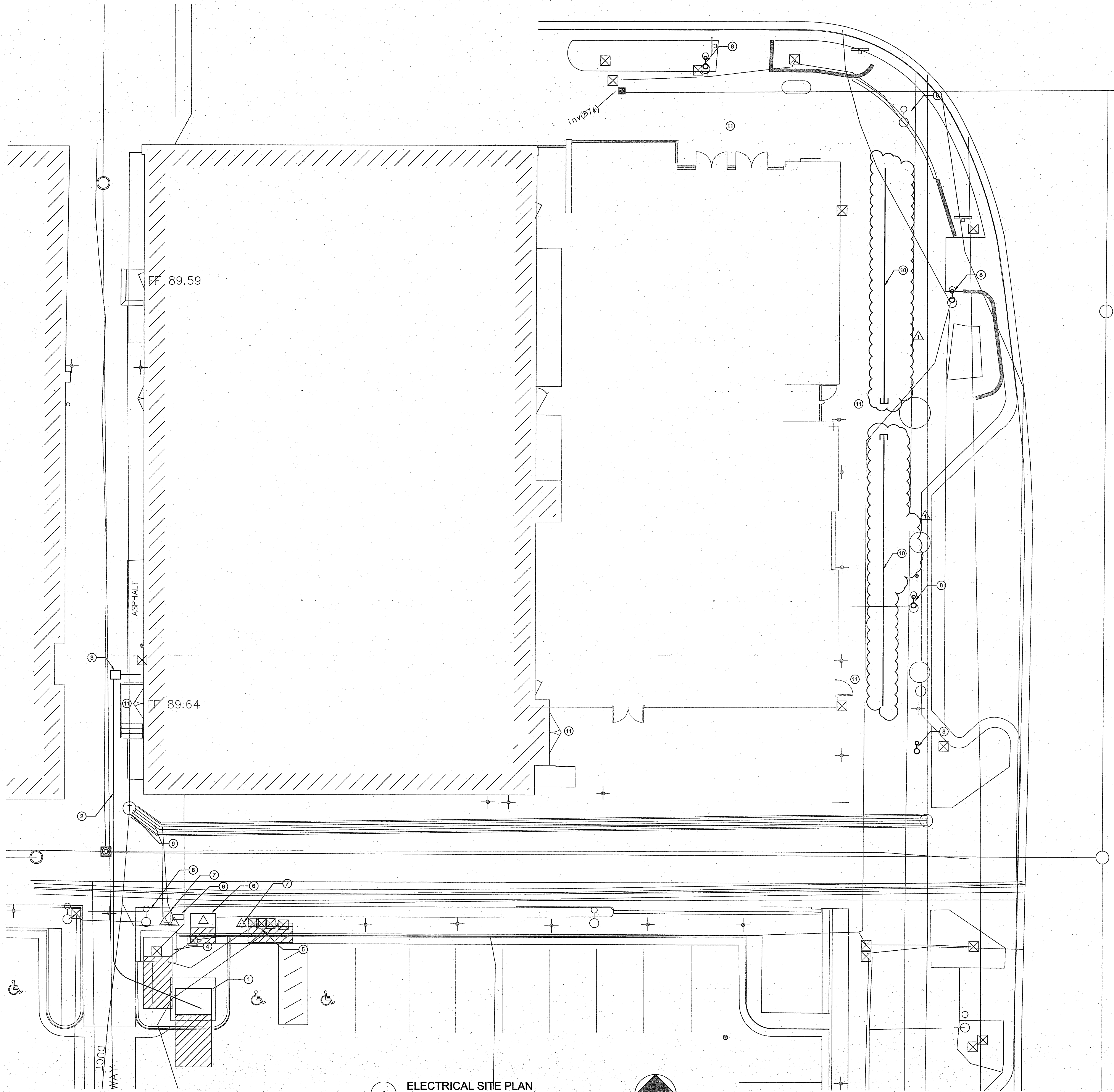
UPPER MEZZANINE
LIGHTING PLAN

CD
EL-104

Issued / Revised		
No.	Date	Description
	2/26/13	ISSUED FOR PERMIT
1	7/26/13	VE/Scope Reductions

Key Notes ② INDICATES KEY NOTE ON THIS SHEET.

1. NEW UTILITY PAD MOUNTED TRANSFORMER. PROVIDE A TRANSFORMER PAD PER EXCEL UTILITY COMPANY GUIDELINES. COORDINATE EXACT LOCATION AND PAD REQUIREMENTS WITH THE UTILITY AND CITY PRIOR TO ANY WORK BEING PERFORMED. RELOCATE ANY EXISTING CONFLICTING UTILITIES AS REQUIRED.
2. PROVIDE A DUCTBANK FROM THE PAD MOUNTED TRANSFORMER TO THE NEW INCOMING MAIN SECTION "MSA" LOCATED IN THE BASEMENT OF THE AVALON THEATRE EXPANSION. PROVIDE SEAL-OFFS AT BUILDING ENTRY. DUCTBANK SHALL BE ROUTED TO ENSURE IT IS NOT LOCATED UNDER THE FUTURE EXPANSION OF THE THEATER. CONTRACTOR SHALL HAND DIG AROUND ALL EXISTING UTILITIES IN THE AREA. REFER TO DETAIL ON E-501 FOR DUCTBANK REQUIREMENTS.
3. PROVIDE A NEW PRE-CAST CONCRETE ELECTRICAL MANHOLE FOR NEW UTILITY SERVICE AS MAY BE REQUIRED BY UTILITY COMPANY. COORDINATE INSTALLATION WITH THE CITY AND OTHER UTILITIES LOCATED IN THE ALLEY. RELOCATE UG LINES AS REQUIRED.
4. EXISTING UTILITY PAD MOUNTED TRANSFORMER TO REMAIN.
5. EXISTING CITY ELECTRICAL DISTRIBUTION SERVING CITY STREET RECEPTACLES AND VENDOR RECEPTACLES TO REMAIN. MAINTAIN CIRCUIT INTEGRITY TO ALL DEVICES SERVED BY PANEL.
6. EXISTING TELECOM PAD MOUNTED CABINET TO REMAIN. MAINTAIN UTILITY CLEARANCES AS REQUIRED.
7. EXISTING CATV PEDESTALS TO REMAIN. MAINTAIN CLEARANCES PER UTILITY REQUIREMENTS.
8. EXISTING POLE MOUNTED PARKING LIGHT TO REMAIN.
9. APPROXIMATE LOCATION OF EXISTING TELECOM MANHOLE.
10. ROUTE 3/4" CONDUIT WITH PULLSTRING FROM THE FUTURE HANDRAIL LIGHT LOCATION. STUB-UP AND CAP CONDUITS IN THE FUTURE STORAGE ROOM 105 ALONG THE EAST WALL AND AT THE FUTURE HANDRAIL LOCATION. FOR FUTURE LOCATION OF THE HANDRAIL. COORDINATE INSTALLATION WITH CIVIL AND ARCHITECTURAL PRIOR TO ANY WORK BEING PERFORMED.
11. SEE LIGHTING SHEETS FOR EXTERIOR BUILDING MOUNTED EGRESS LUMINAIRES.



**Avalon Theatre
Addition and Renovation**

Commission # 12036.00

Westlake Reed Leskosky

One East Camelback Road
Suite 690
Phoenix, Arizona 85012
602.212.0451

© Westlake Reed Leskosky

ELECTRICAL SITE PLAN

1 ELECTRICAL SITE PLAN
1/8" = 1'-0"
North