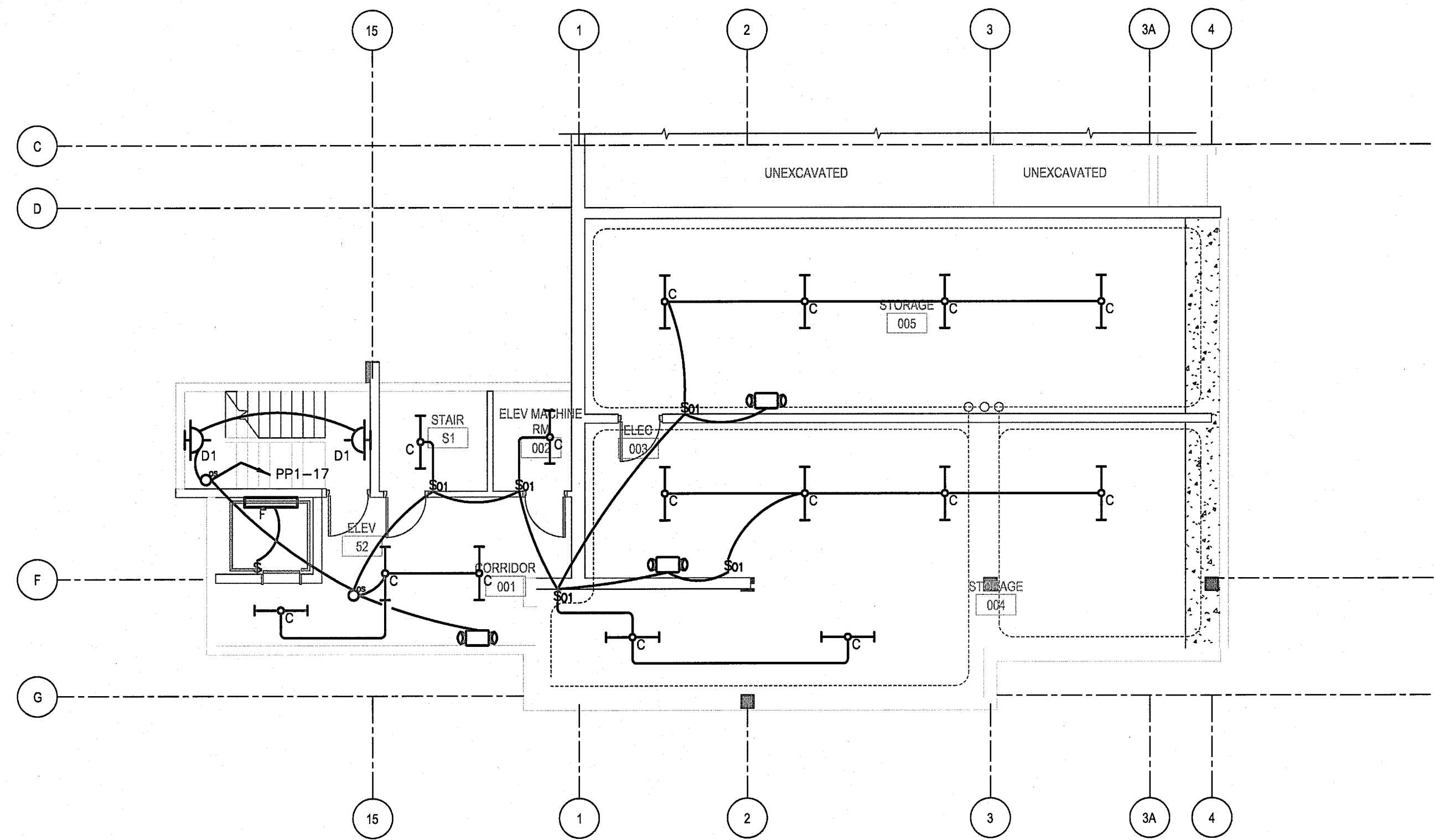


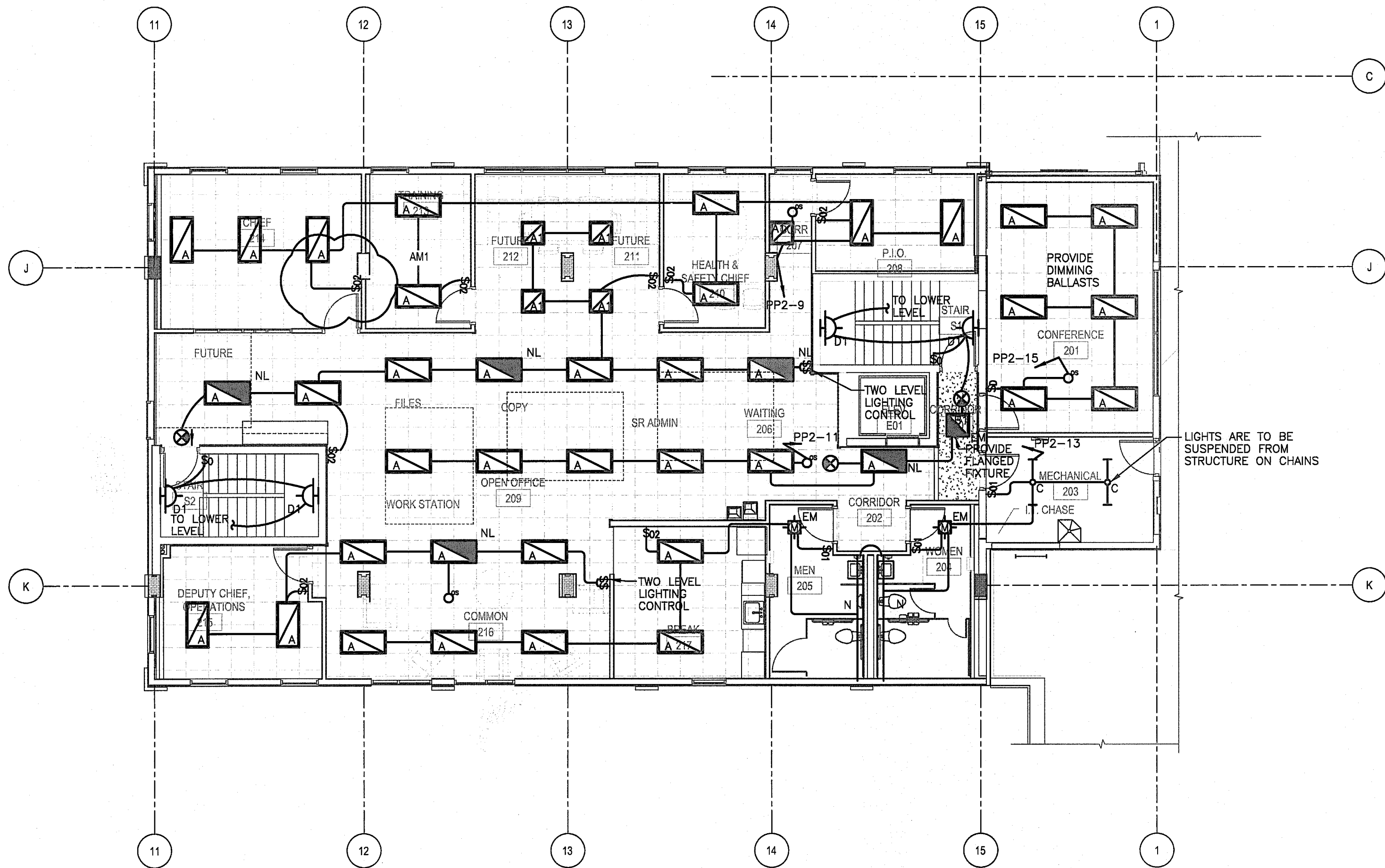
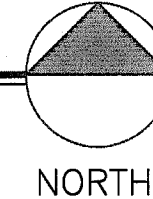
LUMINAIRE SCHEDULE					
TYPE	MANUFACTURER CATALOG NO.	MANUFACTURER CATALOG NO.	VOLTAGE MOUNTING OF LAMPS	BALLAST LAMP TYPE LAMP CAT. #	DESCRIPTION
A	LITHONIA 2AVG 332 SBL MVOLT GEB10IS	APPROVED EQUIVALENT	120 RECESS GRID	ELECTRONIC (2 EA) FLUORESCENT F32TRSPX41ECHO	2' X 4' RECESSED DIRECT INDIRECT FIXTURE WITH STRAIGHT BLADE LOUVER AND ROUND HOLES (2) ELECTRONIC BALLASTS AND 4100K LAMPS
A1	LITHONIA AVG 317 SBL MVOLT GEB10IS	APPROVED EQUIVALENT	120 RECESS GRID	ELECTRONIC (2 EA) FLUORESCENT F17TRSPX41ECHO	2' X 2' RECESSED DIRECT INDIRECT FIXTURE WITH STRAIGHT BLADE LOUVER AND ROUND HOLES (2) ELECTRONIC BALLASTS AND 4100K LAMPS
A2	LITHONIA 2AVF 332 SBL MVOLT GEB10IS	APPROVED EQUIVALENT	120 RECESS CEILING	ELECTRONIC (2 EA) FLUORESCENT F32TRSPX41ECHO	2' X 4' FLANGED RECESSED DIRECT INDIRECT FIXT. WITH STRAIGHT BLADE LOUVER AND ROUND HOLES (2) ELECTRONIC BALLASTS AND 4100K LAMPS
B	LITHONIA 2SPG 232 A12125 MVOLT GEB10IS	APPROVED EQUIVALENT	120 RECESS GRID	ELECTRONIC FLUORESCENT F32TRSPX41ECHO	2' X 2' RECESSED GRID TROFFER WITH .125" ACRYLIC LENS ELECTRONIC BALLAST AND 4100K LAMPS
B1	LITHONIA SPG 217 A12125 MVOLT GEB10IS	EQUIVALENT	120 RECESS GRID	ELECTRONIC FLUORESCENT F17TRSPX41ECHO	2' X 2' RECESSED GRID TROFFER WITH .125" ACRYLIC LENS ELECTRONIC BALLAST AND 4100K LAMPS
B2	LITHONIA 2SPG 332 A12125 MVOLT GEB10IS	APPROVED EQUIVALENT	120 RECESS GRID	ELECTRONIC FLUORESCENT F32TRSPX41ECHO	2' X 4' RECESSED GRID TROFFER WITH .125" ACRYLIC LENS ELECTRONIC BALLAST AND 4100K LAMPS
B3	LITHONIA SPG 232 A12125 MVOLT GEB10IS	APPROVED EQUIVALENT	120 RECESS GRID	ELECTRONIC FLUORESCENT F32TRSPX41ECHO	2' X 4' RECESSED GRID TROFFER WITH .125" ACRYLIC LENS ELECTRONIC BALLAST AND 4100K LAMPS
C	LITHONIA EJS 232 MVOLT GEB10IS	APPROVED EQUIVALENT	120 SURFACE	ELECTRONIC FLUORESCENT F32TRSPX41ECHO	4' 1/4" W X 4' 1/4" D X 48" L STRIP LIGHT SOLID REFLECTOR HIGH GLOSS WHITE FINISH ELECTRONIC BALLAST AND 4100K LAMPS
D	LITHONIA WP 225 120 GEB10IS EL	APPROVED EQUIVALENT	120 WALL SURFACE	ELECTRONIC FLUORESCENT F32TRSPX41ECHO	7' 3/8" W X 3' 1/4" X 36' 7/16" L WALL MOUNTED DIRECT/INDIRECT FIXTURE ELECTRONIC BALLAST AND 4100K LAMPS
D1	LITHONIA WP 232 120 GEB10IS EL	APPROVED EQUIVALENT	120 WALL SURFACE	ELECTRONIC FLUORESCENT F32TRSPX41ECHO	7' 3/8" W X 3' 1/4" X 48' 7/16" L WALL MOUNTED DIRECT/INDIRECT FIXTURE ELECTRONIC BALLAST AND 4100K LAMPS
F	LITHONIA DMW 232 AR 120 GEB10IS	APPROVED EQUIVALENT	120 CEILING	ELECTRONIC FLUORESCENT F32TRSPX41ECHO	7' 5/8" W X 4' 3/4" D X 50" L SURFACE MOUNTED WET LOCATION FIXTURE ELECTRONIC BALLAST AND 4100K LAMPS
H	LITHONIA WSTM-70M-MD-120-LPI	APPROVED EQUIVALENT	120 EXTERIOR WALL	PULSE START METAL HALIDE 70WH	18' 1/4" W X 6' 3/4" D X 11' 3/4" H WALL MOUNTED EXTERIOR LIGHT, METAL HALIDE LAMP ELECTRONIC BALLAST AND 4100K LAMP
H1	LITHONIA WFL2-150M-FM-120 SCWA BBW LV LPI	APPROVED EQUIVALENT	120 EXTERIOR WALL	PULSE START METAL HALIDE 150WH	18' 1/2" W X 9' 1/8" D X 7' 1/4" H WALL MOUNTED EXTERIOR LIGHT, METAL HALIDE LAMP PULSE START BALLAST AND 4100K LAMP
K	LITHONIA ZUC 32 AR 120 GEB10IS SWR	APPROVED EQUIVALENT	120 UNDER CABINET	ELECTRONIC FLUORESCENT F32TRSPX41ECHO	5' 1/4" W X 1' 13/16" D X 48" L UNDER CABINET FIXTURE, HIGH IMPACT ACRYLIC LENS
M	LITHONIA CCR62 26-42TRT 607A MVOLT	APPROVED EQUIVALENT	120 CEILING RECESS	ELECTRONIC FLUORESCENT 32W DTT 4100K	6" DIAMETER RECESSED DOWN LIGHT, CLEAR REFLECTOR, VERTICAL LAMP, TRT LAMP ELECTRONIC BALLAST AND 4100K LAMP
N	LITHONIA LINEAR LIGHTING WWS D2SG E18 120 MEL 5 BW CONTINUOUS	APPROVED EQUIVALENT	120 CEILING RECESS	ELECTRONIC FLUORESCENT F32TRSPX41ECHO	6.5" W X 10" H X VARIES RECESSED WALL WASHER WITH WHITE LOUVER ELECTRONIC BALLAST AND 4100K LAMP
P	LITHONIA LUMASCAPE LS471LED-2X14W-28W4 LH-4-DARK BRONZE	APPROVED EQUIVALENT	120 EXTERIOR WALL	ELECTRONIC DRIVER LED 2X14WATT 4300K	4.3" DIAMETER WALL MOUNTED UP/DOWN LIGHT, IP66 & 1P67 RATED, DARK BRONZE FINISH.
S	LITHONIA STONCO VK 1 GC	APPROVED EQUIVALENT	120 CEILING SURFACE	NONE INCANDESCENT 100W/119	4' 1/8" DIA X 7' 1/2" H LIGHT FIXTURE WITH GLASS GLOBE AND CAST GUARD.
Q	LITHONIA BELM2NH	APPROVED EQUIVALENT	120/277 SURFACE WALL	NONE REQUIRED HALOGEN WITH UNIT	16.25"Wx5-3/8"Dx5"H IMPACT RESISTANT POLYCARBONATE HOUSING 8W HALOGEN LAMPS NICKEL CADMIUM BATTERY
H	LITHONIA LE S 1G120/277ELN SEE NOTE 4	APPROVED EQUIVALENT	120/277 WALL/CEILING	NONE REQUIRED LED WITH UNIT	12-1/4"Wx6-1/2"Hx4"D, DIE CAST ALUMINUM HOUSING W/ GREEN LETTERING, NICAD BATTERY
X	LITHONIA LE S 1G120/277ELN RO/ELN, SEE NOTE 5	APPROVED EQUIVALENT	120/277 WALL/CEILING	NONE REQUIRED INCANDESCENT N/A	12-1/4"Wx9-1/2"Hx4"D, DIE CAST ALUMINUM HOUSING W/GREEN LETTERING, NICAD BATTERY W/IND REMOTE HEAD.
Q	LITHONIA ELA-W-H0806	APPROVED	120/277 WALL/CEILING	NONE REQUIRED LED	4.75"Wx7.75"Hx4.5"D WHITE SEALED REMOTE MOUNTED FIXTURE, 6 VOLT, 9 WATT LAMP. VERIFY COMPATIBILITY WITH EMERGENCY FIXTURE

- NOTES:
1. THE ELECTRONIC FLUORESCENT BALLAST SHALL HAVE A TOTAL HARMONIC DISTORTION OF PLUS/MINUS 10% AND A BALLAST FACTOR EQUAL TO OR GREATER THAN 85%.
  2. ALL LIGHTING FIXTURES DENOTED WITH "EM" OR HALF SHADED SHALL BE PROVIDED WITH AN ENGINEER APPROVED EMERGENCY BALLAST FOR OPERATION OF TWO LAMPS IN A 4 LAMP FIXTURE AND 1 LAMP IN A 2 OR 3 LAMP FIXTURE. BALLAST SHALL BE CONNECT TO THE UNSWITCHED SIDE OF THE LIGHTING CIRCUIT.
  3. GRID TROFFER TYPE LIGHTING FIXTURES SHALL NOT BE SUPPORTED FROM THE T-BAR CEILING GRID.
  4. THE SYMBOL USED IN THIS SCHEDULE IS A GENERIC SYMBOL TO INDICATE AN EXIT LIGHT FIXTURE. REFER TO THE PLANS FOR THE NUMBER OF FACES REQUIRED AT EACH EXIT. INSTALL THE NUMBER OF FACES REQUIRED AT EACH EXIT. FIELD ADJUST THE LOCATION OF THE EXIT SIGNS FOR THE BEST VISIBILITY POSSIBLE.
  5. THIS EXIT SIGN REQUIRES THE EXTRA BATTERY CAPACITY TO OPERATE THE REMOTELY LOCATED EMERGENCY HEAD FOR EGRESS AWAY FROM THE BUILDING.



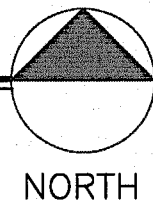
SCALE: 1/8"=1'-0"

LIGHTING BASEMENT FLOOR PLAN

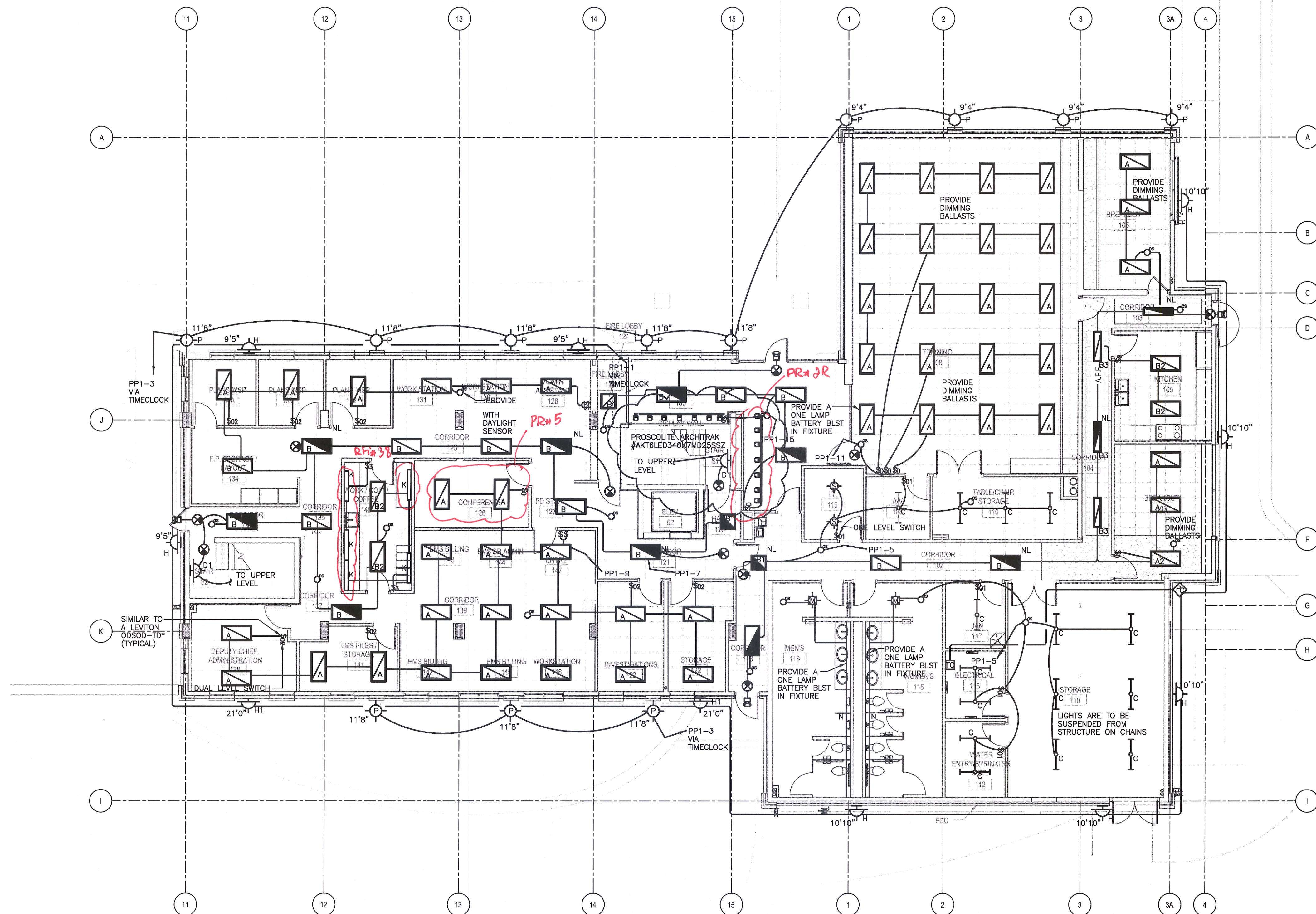


LIGHTING SECOND FLOOR PLAN

SCALE: 1/8"=1'-0"



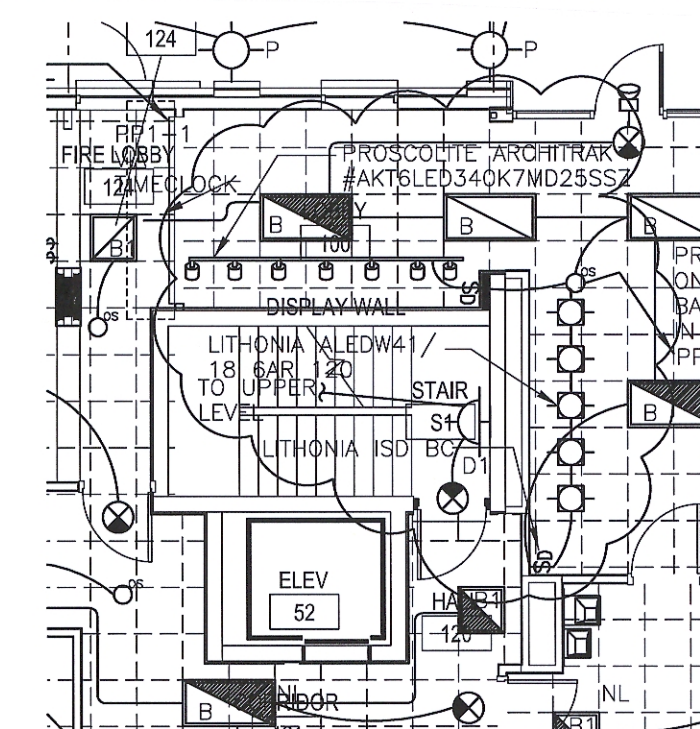




LIGHTING FIRST FLOOR PLAN

SCALE: 1/8"=1'-0"

NORTH



PROVIDE LITHONIA ALEDW 41/18 6AR 120 RECESSED WALL WASH FIXTURES  
PROVIDE LITHONIA ISD BC WALLBOX DIMMER

WALL WASH FIXTURES TO BE INSTALLED ALONG AN ARC THAT FOLLOWS THE WALL, EQUIDISTANT FROM THE WALL AND CENTERED ON THE 5 ART PANELS INSTALLED BY OTHERS. COORDINATE EXACT LOCATIONS WITH OWNER AND ARCHITECT.

 Blythe Consulting Engineers, Inc. Mechanical & Electrical Engineers 569 S. Westgate Dr., Suite 1 Grand Junction, CO 81505 phone: 970-241-8709, fax: 970-241-9514	Project Name and Address <b>G.J. FIRE ADMINISTRATION GRAND JUNCTION, CO</b>	Project 11-019	Sheet
	<b>PR #2R</b>	Date 11/08/12	E1-1
		Scale AS NOTED	SK-2
	November 08, 2012 - 7:12:39am		

#### PROPOSAL REQUEST

PROJECT:	Grand Junction Fire Dept Admin Offices 625 Ute Avenue Grand Junction, CO 81501	PR NUMBER: 2R
OWNER:	City of Grand Junction 250 North 5 <sup>th</sup> Street Grand Junction, CO 81501	DATE OF ISSUANCE: 11/08/12
TO CONTRACTOR:	Shaw Construction 760 Horizon Drive Grand Junction, CO 81506	ARCHITECT: BLYTHE GROUP + co. ARCHITECT'S PROJECT NO.: 1031-3 CONTRACT FOR: CONSTRUCTION CONTRACT DATE: 9/28/12 (Amdt #21)

Please submit an itemized proposal for changes in the Contract Sum and Contract Time for proposed modifications to the Contract Documents described herein. Submit proposal within 10 days, or notify the Architect in writing of the date on which you anticipate submitting your proposal.

THIS IS NOT A CHANGE ORDER, A CONSTRUCTION CHANGE DIRECTIVE OR A DIRECTION TO PROCEED WITH THE WORK DESCRIBED IN THE PROPOSED MODIFICATIONS.

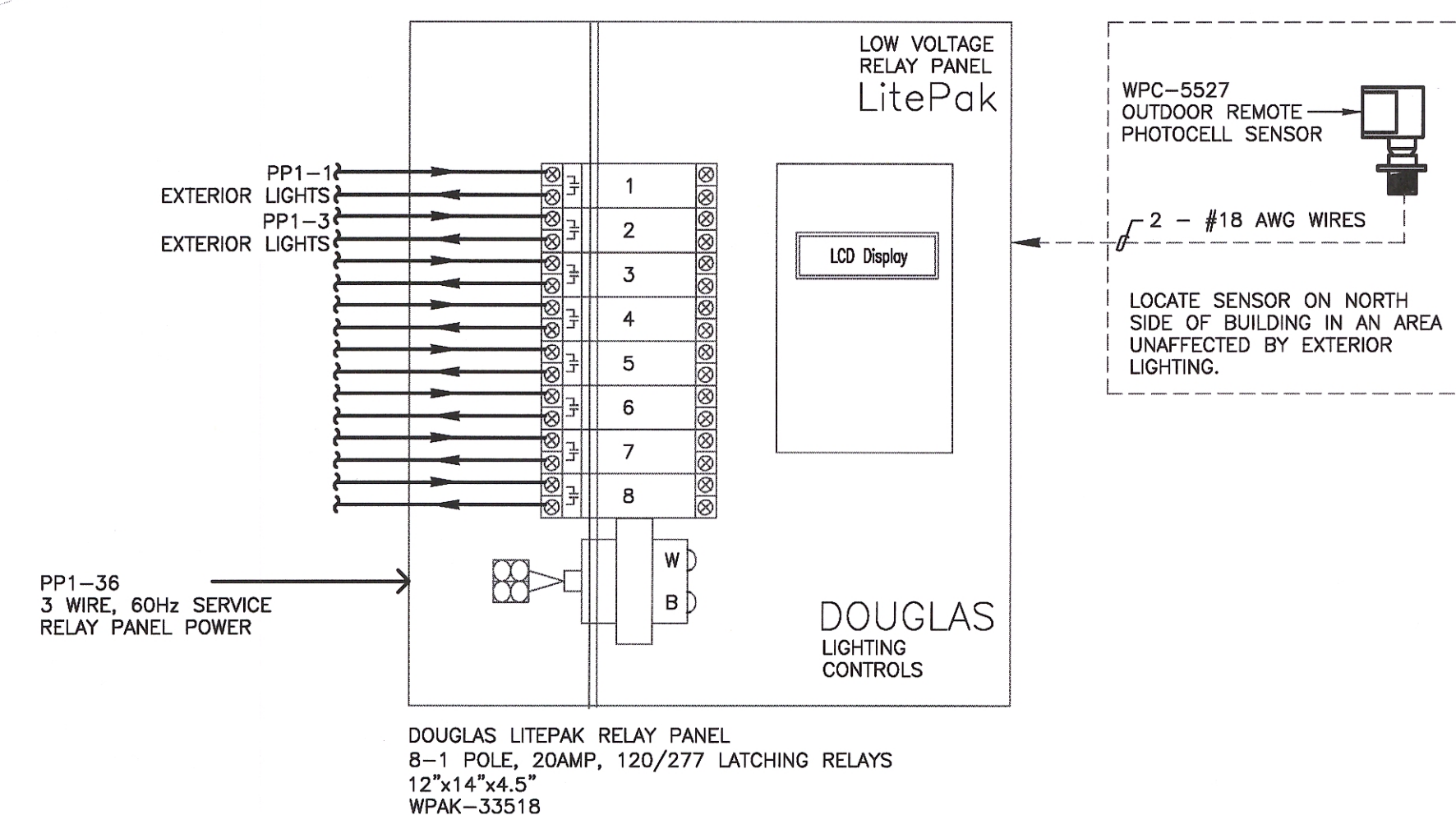
#### DESCRIPTION: TRAINING LOBBY 101 ART WALL

Revise the layout of the Type 7 wall on grid line 15 as indicated on the attached sketch. The edge of the AM-1 ceiling will follow it.

Revise the track lighting in front of the wall to be 5 recessed fixtures in an arc that follows the wall, each centered on one of the 5 art panels that will be installed by others. Coordinate exact fixture locations with Owner and Architect following ceiling installation.

#### ATTACHMENTS:

Sketch SK(A1-1) dated 10/30/12, sketch E1-1/SK-2 dated 11/8/12.



#### EXTERIOR LIGHTING CONTROL SCHEMATIC

NOT TO SCALE

Architecture  
Engineering  
Interior Design  
Construction Management

**BLYTHE** GROUP co.  
The Art & Science of Construction

418 Road Avenue  
Grand Junction, CO 81501  
office: 970.242.1098  
www.blythegroup.com

#### FIRE ADMINISTRATION RENOVATION

625 UTE AVENUE  
GRAND JUNCTION,  
COLORADO

#### LIGHTING FIRST FLOOR PLAN

#### CONFORMED DOCUMENTS

THIS SET OF CONFORMANCE DRAWINGS IS PROVIDED AS A CONVENIENCE TO THE CONTRACTOR. ARCHITECT AND ENGINEERS HAVE ATTEMPTED TO INCORPORATE ALL 4 ADDENDA. IN THE CASE OF ANY CONFLICT, THE ORIGINALLY ISSUED DOCUMENTS SHALL GOVERN. CONTRACTOR SHALL BE RESPONSIBLE FOR VERIFICATION THAT THE CONFORMANCE SET FULLY INCORPORATES THE CONTRACT DOCUMENTS IN THEIR ENTIRETY.

REV.	DESC.	DATE:
-	100% REVIEW	08/01/12
-	CONFORM	10-19-12

DATE: 10/19/2012

PROJECT #: 1031-2

SHEET #:

E1-1