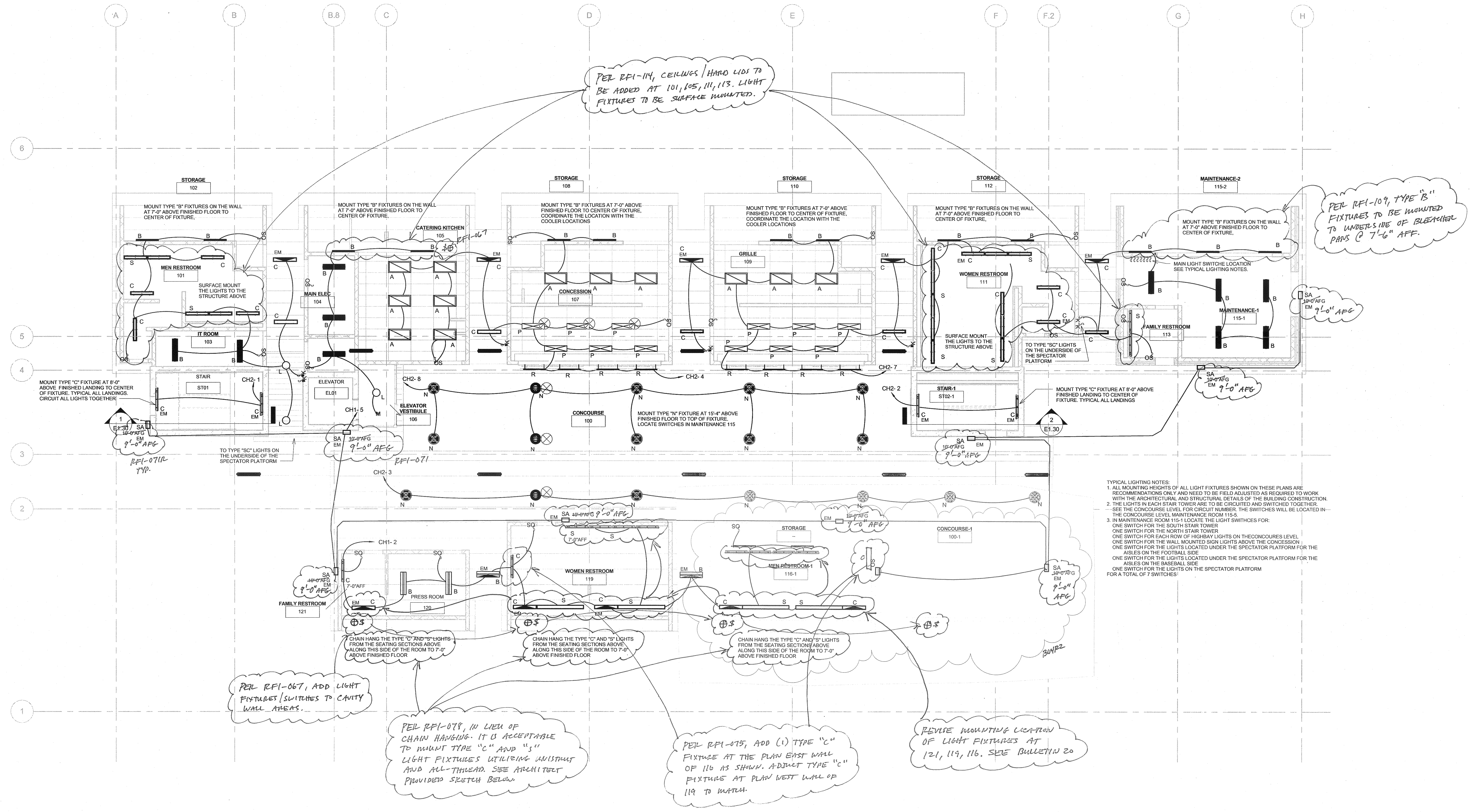


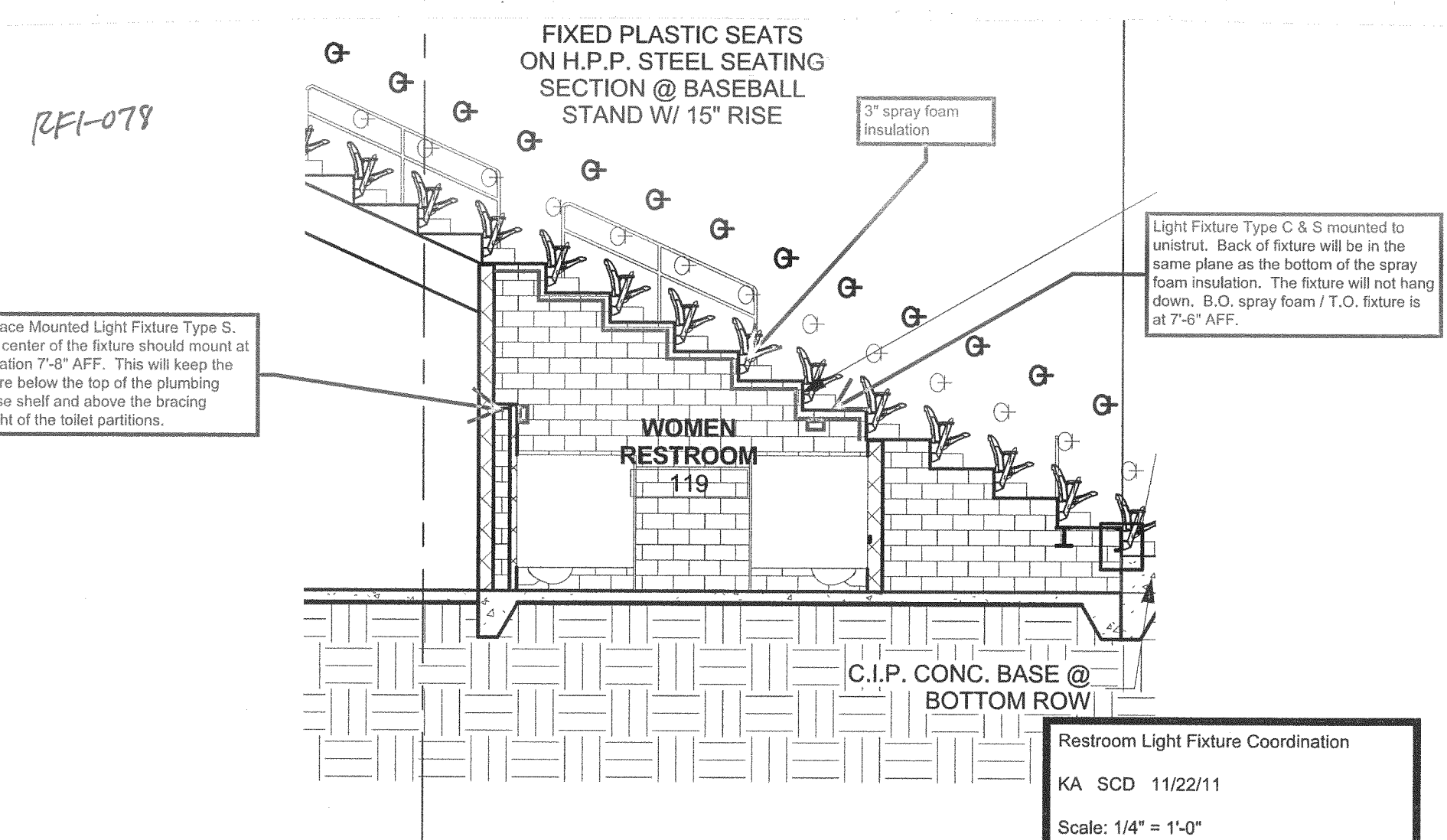
SINK COMBS DETHLEFS

A Professional Corporation for Architecture

Copyright by Sink Combs Dethlefs, P.C.
475 Lincoln Street, Suite 100, Denver, Colorado 80202
303.308.0200 FAX 308.6222



1 LIGHTING - CONCOURSE LEVEL
1/8" = 1'-0"



LIGHTING LEGEND

- ◻ DIMMER SWITCH
- ◻ SINGLE POLE SWITCH
- ◻ 3 WAY SWITCH
- ◻ TIMER SWITCH MANUAL ON/TIMED OFF
- ◻ WALL MOUNTED OCCUPANCY SWITCH
- ◻ CEILING MOUNTED OCCUPANCY SWITCH
- ◻ CEILING MOUNTED SPEAKER
- ◻ KEY OPERATED LIGHT SWITCH
- ◻ 2x4 RECESSED TROFFER
- ◻ 1x4 SURFACE LIGHT
- ◻ 1" W PENDANT MOUNTED LIGHT
- ◻ 4" OPEN STRIP
- ◻ HIGH BAY PENDANT MOUNTED LIGHT
- ◻ RECESSED DOWN LIGHT
- ◻ WALL OR CEILING MOUNTED EXIT LIGHT
- ◻ EXTERIOR WALL MOUNTED LIGHT WITH EMERGENCY FUNCTION

- TYPICAL LIGHTING NOTES:
- ALL MOUNTING HEIGHTS OF ALL LIGHT FIXTURES SHOWN ON THESE PLANS ARE RECOMMENDATIONS ONLY AND MAY NEED TO BE FIELD ADJUSTED AS REQUIRED TO WORK WITH THE ARCHITECTURAL AND STRUCTURAL DETAILS OF THE BUILDING CONSTRUCTION. THE ELECTRONIC FLUORESCENT BALLAST SHALL HAVE A TOTAL HARMONIC DISTORTION OF PLUS/MINUS 20% AND A BALLAST FACTOR EQUAL TO OR GREATER THAN 80%.
 - ALL LIGHTING FIXTURES DENOTED WITH "EM" OR HALF SHADED SHALL BE PROVIDED WITH AN ENGINEER APPROVED EMERGENCY BALLAST FOR OPERATION OF TWO LAMPS IN A 4 LAMP FIXTURE AND 1 LAMP IN A 2 OR 3 LAMP FIXTURE. BALLAST SHALL BE CONNECT TO THE UNSWITCHED SIDE OF THE LIGHTING CIRCUIT.
 - GRID TROFFER TYPE LIGHTING FIXTURES SHALL NOT BE SUPPORTED FROM THE T-BAR CEILING GRID.
 - THE SYMBOL USED IN THIS SCHEDULE IS A GENERIC SYMBOL TO INDICATE AN EXIT LIGHT FIXTURE. REFER TO THE PLANS FOR THE NUMBER OF FACES REQUIRED AT EACH EXIT. INSTALL THE NUMBER OF FACES REQUIRED AT EACH EXIT. FIELD ADJUST THE LOCATION OF THE EXIT SIGNS FOR THE BEST VISIBILITY POSSIBLE.
 - THIS EXIT SIGN REQUIRES THE EXTRA BATTERY CAPACITY TO OPERATE THE REMOTELY LOCATED EMERGENCY HEAD FOR EGRESS AWAY FROM THE BUILDING.
 - FLUORESCENT LUMINAIRE DISCONNECTING MEANS: INDOOR LOCATIONS, OTHER THAN DWELLINGS AND ASSOCIATED ACCESSORY STRUCTURES, FLUORESCENT LUMINAIRES (FIXTURES) THAT UTILIZE DOUBLE-ENDED LAMPS AND CONTAIN BALLAST(S) THAT CAN BE SERVICED IN PLACE OR BALLASTED LUMINAIRES THAT ARE SUPPLIED FROM MULTI-WIRE BRANCH CIRCUITS AND CONTAIN BALLAST(S) THAT CAN BE SERVICED IN PLACE SHALL HAVE A DISCONNECTING MEANS EITHER INTERNAL OR EXTERNAL TO EACH LUMINAIRE (FIXTURE), TO DISCONNECT SIMULTANEOUSLY FROM THE SOURCE OF SUPPLY ALL CONDUCTORS OF THE BALLAST, INCLUDING THE GROUNDING CONDUCTOR IF ANY. THE LINE-SIDE TERMINALS OF THE DISCONNECTING MEANS SHALL BE GUARDED. THE DISCONNECTING MEANS SHALL BE LOCATED SO AS TO BE ACCESSIBLE TO QUALIFIED PERSONS BEFORE SERVICING OR MAINTAINING THE BALLAST. THIS REQUIREMENT SHALL BECOME EFFECTIVE JANUARY 1, 2008.

LINCOLN PARK STADIUM IMPROVEMENTS

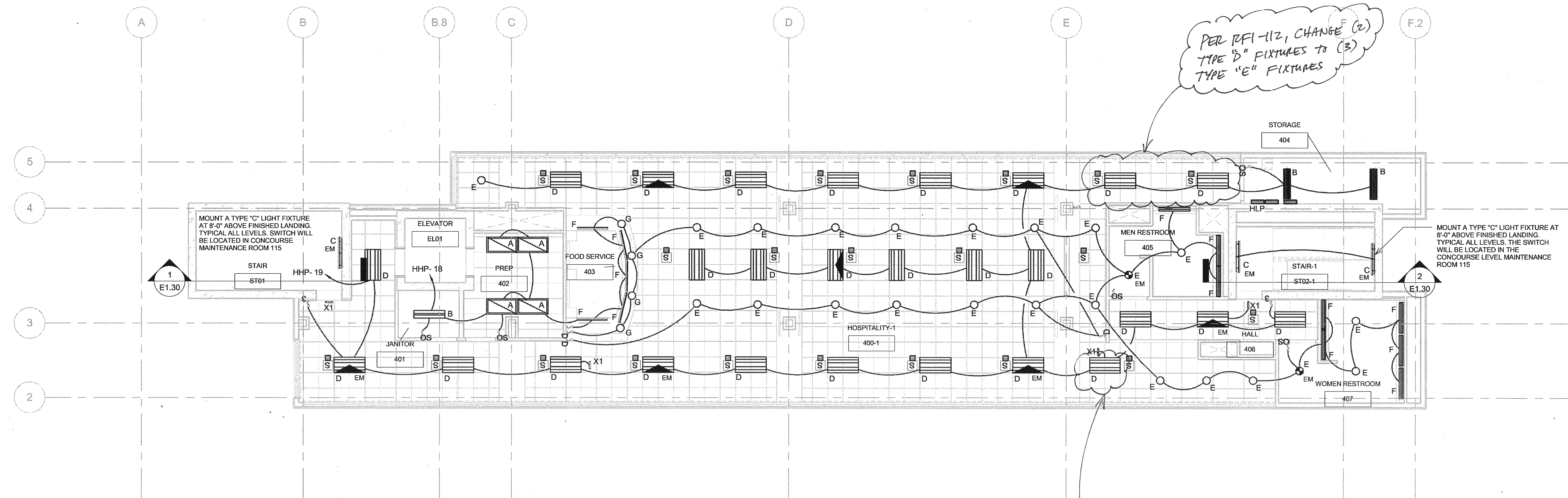
GRAND JUNCTION, CO

SCD Project No.: 10-158

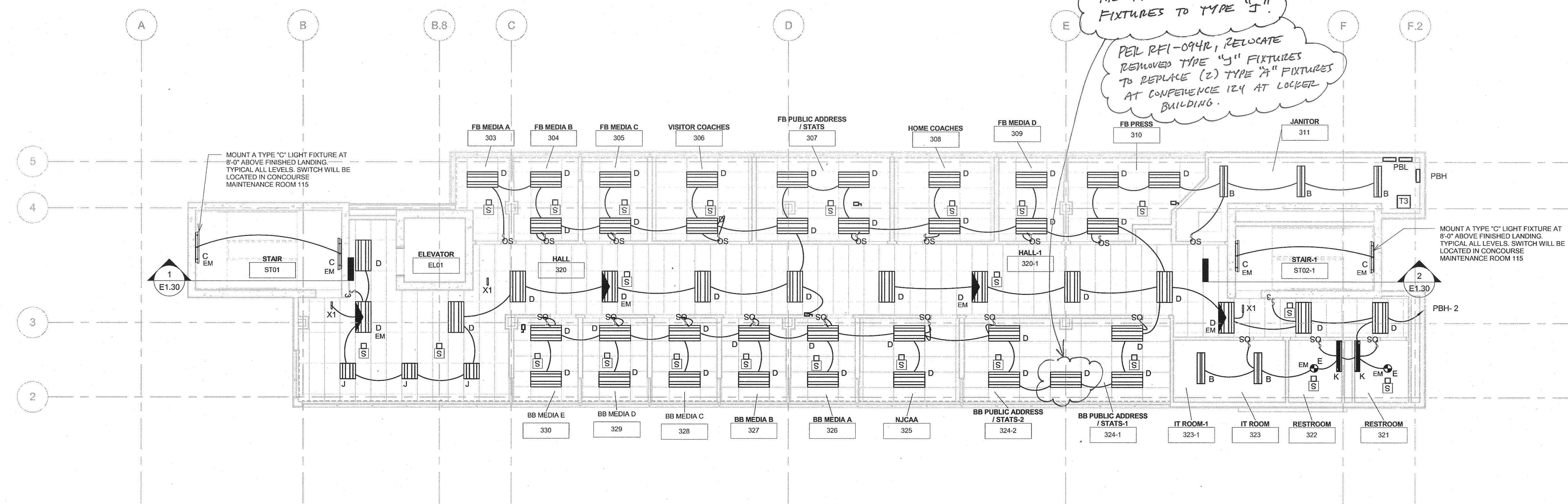
CONCOURSE LIGHTING PLAN

Drawn By:
Checked By:

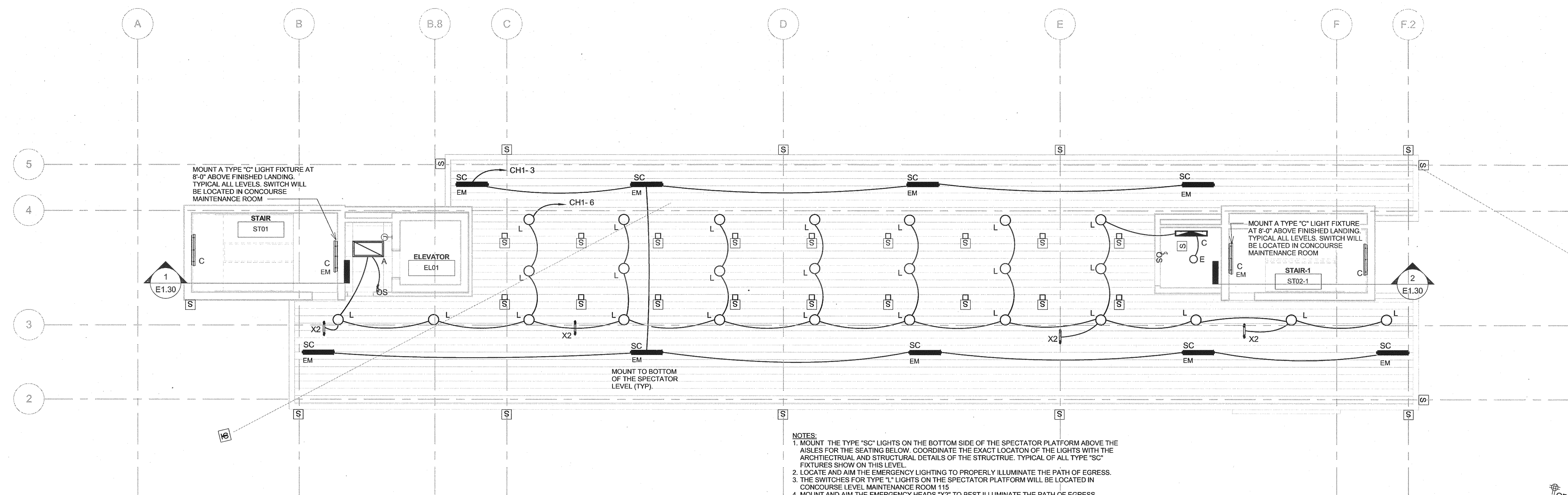
E1.10



③ LIGHTING - HOSPITALITY LEVEL
1/8" = 1'-0"



② LIGHTING - PRESS BOX LEVEL
1/8" = 1'-0"



① LIGHTING - SPECTATOR PLATFORM LEVEL
1/8" = 1'-0"

NOTES:
1. MOUNT THE TYPE "SC" LIGHTS ON THE BOTTOM SIDE OF THE SPECTATOR PLATFORM ABOVE THE AISLES FOR THE SEATING BELOW. COORDINATE THE EXACT LOCATION OF THE LIGHTS WITH THE ARCHITECTURAL AND STRUCTURAL DETAILS OF THE STRUCTURE. TYPICAL OF ALL TYPE "SC" FIXTURES SHOWN ON THIS LEVEL.
2. LOCATE AND AIM THE EMERGENCY LIGHTING TO PROPERLY ILLUMINATE THE PATH OF EGRESS.
3. THE SWITCHES FOR TYPE "L" LIGHTS ON THE SPECTATOR PLATFORM WILL BE LOCATED IN CONCOURSE LEVEL MAINTENANCE ROOM 115.
4. MOUNT AND AIM THE EMERGENCY HEADS "X2" TO BEST ILLUMINATE THE PATH OF EGRESS. TYPICAL OF TYPE "X2" EMERGENCY LIGHTS.

All information appearing herein shall not be duplicated, discharged or otherwise used without the written consent of Sink Combs Dethlefs.

SINK COMBS DETHLEFS
A Professional Corporation for Architecture

Copyright by
Sink Combs
Dethlefs, P.C.
475 Lincoln Street,
Suite 100
Denver, Colorado 80202
303.308.0500
FAX 308.9222

Issues/Revisions:	Date:
SCHEMATIC DESIGN	12/10/10
DESIGN DEVELOPMENT	02/04/11
CD COORDINATION SET	03/02/11
95% CD SET/PERMIT SET	03/18/11
100% CD SET	05/06/11
BULLETIN 01	06/17/11

LINCOLN PARK
STADIUM
IMPROVEMENTS
GRAND JUNCTION, CO

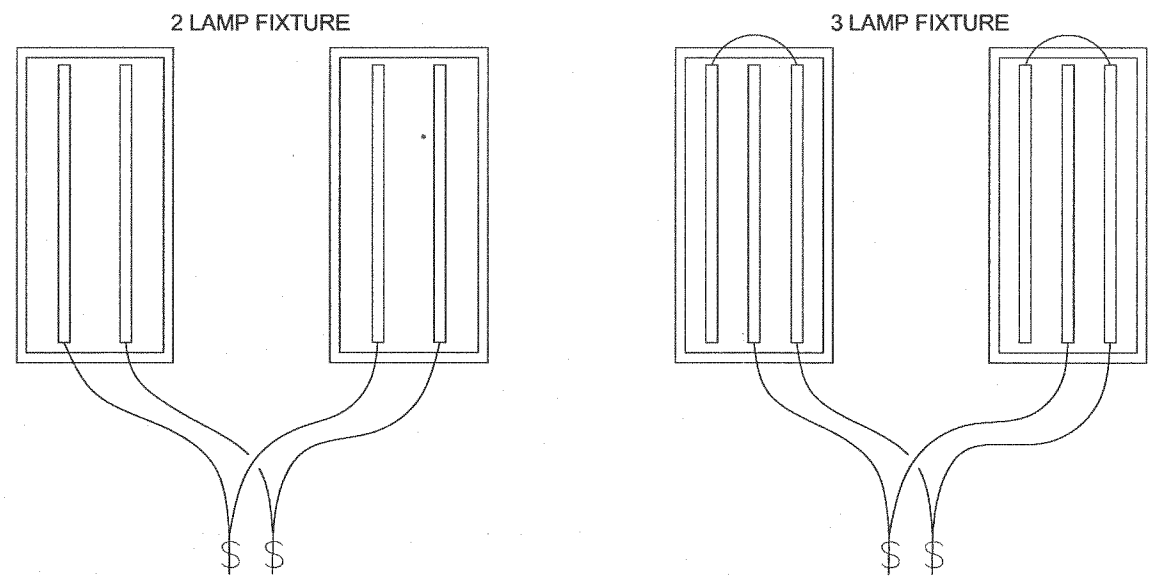
SCD Project No.: 10-158

PLATFORM,
PRESSBOX &
HOSPITALITY
LIGHTING
PLANS

Drawn By:
Checked By:

E1.20

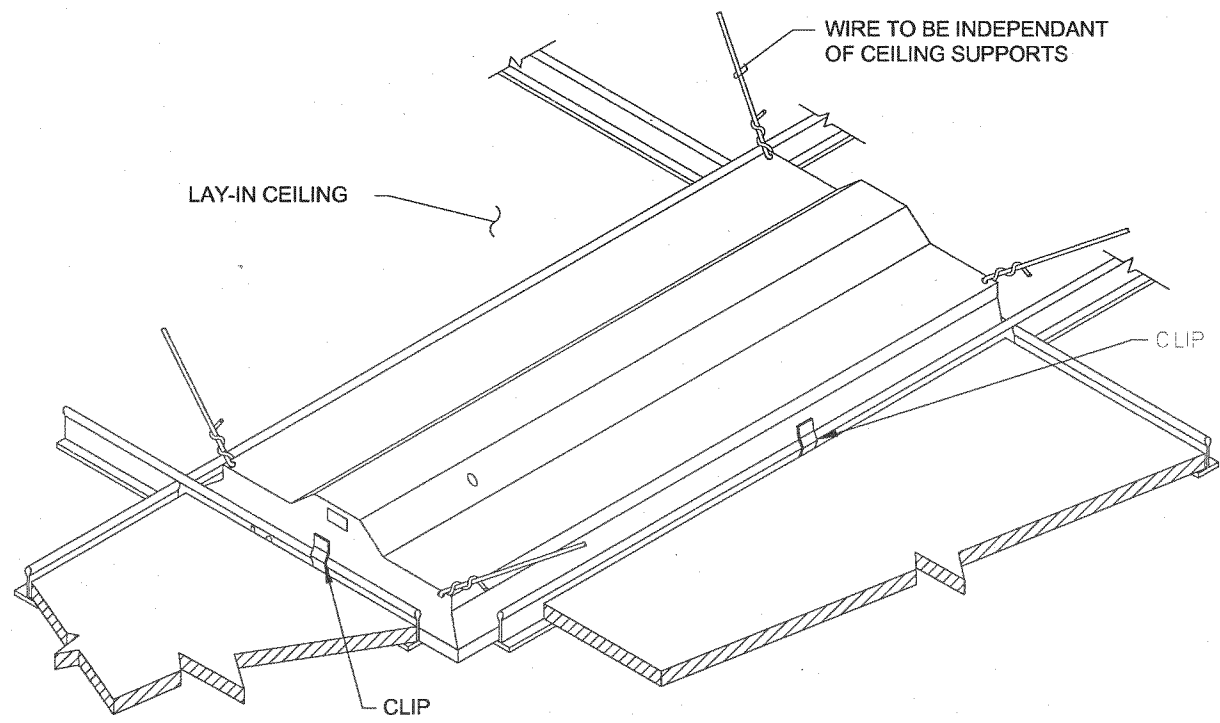
LIGHTING FIXTURE SCHEDULE					
TYPE MARK	BRAND	MODEL	ELECTRICAL DATA	LAMP	DESCRIPTION
A	LITHONIA LIGHTING	2SP8G-2/32-A12-MVOLT-GE	277 V/1-25 VA	F32T8-TL835	2'x4' SPECIFICATION PREMIUM TROFFER; THREE (3) LAMP T8; ACRYLIC PRISMATIC LENS .125 THICK IN STEEL DOOR FRAME; SPECULAR SILVER REFLECTIVE INSERTS; 1/3 MULTIVOLT ELECTRONIC BALLAST.
B	LITHONIA LIGHTING	EJS-2/32T8-MVOLT-GE10IS-WGL+EL	277 V/1-58 VA	F32T8-TL835	GENERAL PURPOSE INDUSTRIAL 12"Wx4'L 2-T8 LAMP; SYMMETRICAL REFLECTOR, ELECTRONIC BALLAST, WIRE GUARD
C	LITHONIA LIGHTING	DMW-2/32-MVOLT-GE10IS+EL6DW	277 V/1-58 VA	F32T8-TL835	4" LONG SURFACE MOUNTED WET LOCATION ENCLOSED 2LAMP T8 ELECTRONIC BALLAST WITH EMERGENCY BALLAST IN FIXTURES AS SHOWN
D	LITHONIA LIGHTING	2RT5-28T5-MVOLT-GE10IS-LP M834+EL14	277 V/1-63 VA	28T5-LT835	2'Wx4'Lx3"H VOLUMETRIC RECESSED LIGHTING FIXTURE.
E	LITHONIA LIGHTING	LF6N-1/26-42TRT-F601AZ-MV OLT (ADEZ)	277 V/1-36 VA	32TRT	6"APERTURE x 6-3/8"H RECESSED DOWNLIGHT; HORIZONTAL LAMP; CLEAR SEMI-SPECULAR REFLECTOR; DIMMING
F	LITHONIA LIGHTING	Z-2/32-MVOLT-GE10IS	277 V/1-58 VA	F32T8-TL835	2-1/8"Wx1.5"D Z COMPACT T8 OPEN STRIP; 2 T8 LAMPS
G	INTENSE LIGHTING	ILS4-70030-27-DIM	277 V/1-50 VA	LED	4"DIA ARCHITECTURAL SOLID STATE LED DOWN LIGHT; VERIFY MOUNTING FLANGE WITH ARCHITECTURAL CEILING TYPE; DIMMING
J	LITHONIA LIGHTING	2RT5-14T5-MVOLT-GE115-L P835	277 V/1-34 VA	14W T5 - LT835	2'x2" VOLUMETRIC RECESSED LIGHTING FIXTURE.
K	PRUDENTIAL LIGHTING	WAL-10-2T8-R04-TMW-SC-120 -WM+EML	277 V/1-58 VA	F32T8-TL835	4'Lx4.75"Hx7"D WALL MOUNTED CURVED LIGHTING FIXTURE, TEXTUED MATTE WHITE FINISH
L	LITHONIA LIGHTING	AQL-55IL-10PR-LD-CGL-277	277 V/1-69 VA	55 WATT INDUCTION	10"DIAx13.5"H RECESSED DOWNLIGHT, INDUCTION LAMP, MATTE DIFFUSER, CLEAR GLASS LENS, PEWTER APERTURE TRIM COLOR
N	LITHONIA LIGHTING	TX-250M-PA22C-TB-SCWA	277 V/1-295 VA	250MH	23-3/8"DIA x 24.5"H ENCLOSED ACRYLIC OPTICAL; 250 MH WITH CONICAL ACRYLIC DROP LENS
P	LITHONIA LIGHTING	SP8G-2/32-A12-MVOLT-GE10IS	277 V/1-58 VA	F32T8-TL835	1'Wx4'L SPECIFICATION PREMIUM TROFFER; 2 LAMP T8; PATTERN #12 ACRYLIC PRISMATIC LENS SMOOTH SIDE OUT; ELECTRONIC BALLAST;
R	INSIGHT LIGHTING	TE12-X-60-EAS90-4-CC	277 V/1-58 VA	LED	2-5/8"Wx2-1/8"Dx48"L EXTRUDED ALUMINUM HOUSING; FIELD ADJUSTABLE; ONE PIECE SEALED EXTRUDED ACRYLIC LENS, WARM COLOR TEMPATURE
S	LITHONIA LIGHTING	TDMMW-4/32-MVOLT-GE10IS+EL6DW	277 V/1-110 VA	F32T8-TL835	98"Lx8"Wx5-5/8"D TANDEM MOUNTED DAMP/WET LOCATION ENCLOSED INDUSTRIAL 4 2LAMP T8 ELECTRONIC BALLAST
SA	LITHONIA LIGHTING	WSR-50M-FT-TB-2DC2012-DN AT	277 V/1-129 VA	50MH	ARCHITECTURAL SCONCE WITH FORWARD THROW DISTRIBUTION WITH CLEAR; FLAT GLASS LENS. CLEAR LAMP. EMERGENCY FUNCTION. NATURAL ALUMINUM FINISH
SB-EM	HYDREL	8100-150M-TB-SR4SC-GE10IS R + EM	277 V/1-93 VA	150MH	10"Wx5"Hx12-5/16"L POLE MOUNT FLOOD LIGHT; ALUMINUM HOUSING, ANODIZED SPECULAR REFLECTOR, WITH EMERGENCY BACKUP BALLST. MOUNT TO EXISTING POLE
SC	HYDREL	4754-2/54T5HO-MVOLT-WFL-AWM-HVSRPLPKX-ELN-STG	277 V/1-120 VA	T54W T5HO	4'Lx4Wx4.375H 4754 LINEAR WIDE DISTRIBUTION FLOOD LIGHT WITH SPECULAR REFLECTOR AND CLEAR LENS, YOAK MOUNT FOR ADJUSTABILITY, EMERGENCY BALLAST
X1	LITHONIA LIGHTING	LQM-SW3G-120/277-ELN	277 V/1-5 VA	LED	11.75"Wx7-5/8"H EXIT LIGHT, WHITE HOUSING, STENCIL FACE, GREEN LETTERS; NICKEL-CADMIUM BATTERY
X2	LITHONIA LIGHTING	LHQM-S-W-3-G-HO	277 V/1-5 VA	LED	SURFACE MOUNTED EMERGENCY/EXIT COMBINATION UNIT. WHITE HOUSING, STENCIL FACE, GREEN LETTTERS.



DETAIL NOTES:
1. FOR ALL DUAL LEVEL SWITCHED LUMINAIRES, EACH SWITCH SHALL OPERATE 1 LAMP IN A TWO LAMP FIXTURE, IN A 3 LAMP FIXTURE ONE SWITCH SHALL OPERATE ONE LAMP AND THE SECOND SWITCH SHALL OPERATE 2 LAMPS, IN A 4 LAMP FIXTURE EACH SWITCH SHALL OPERATE TWO LAMPS. IN A SINGLE LAMP FIXTURE THE SWITCHING DESIGNATIONS SHALL BE SHOWN ON THE DRAWING IN LOWER CASE LETTER, CORRIDORS, STORAGE ROOMS AND RESTROOMS ARE EXEMPT FROM THE DUAL LEVEL SWITCHING REQUIREMENTS.

DUAL LEVEL LIGHT SWITCHING DETAIL

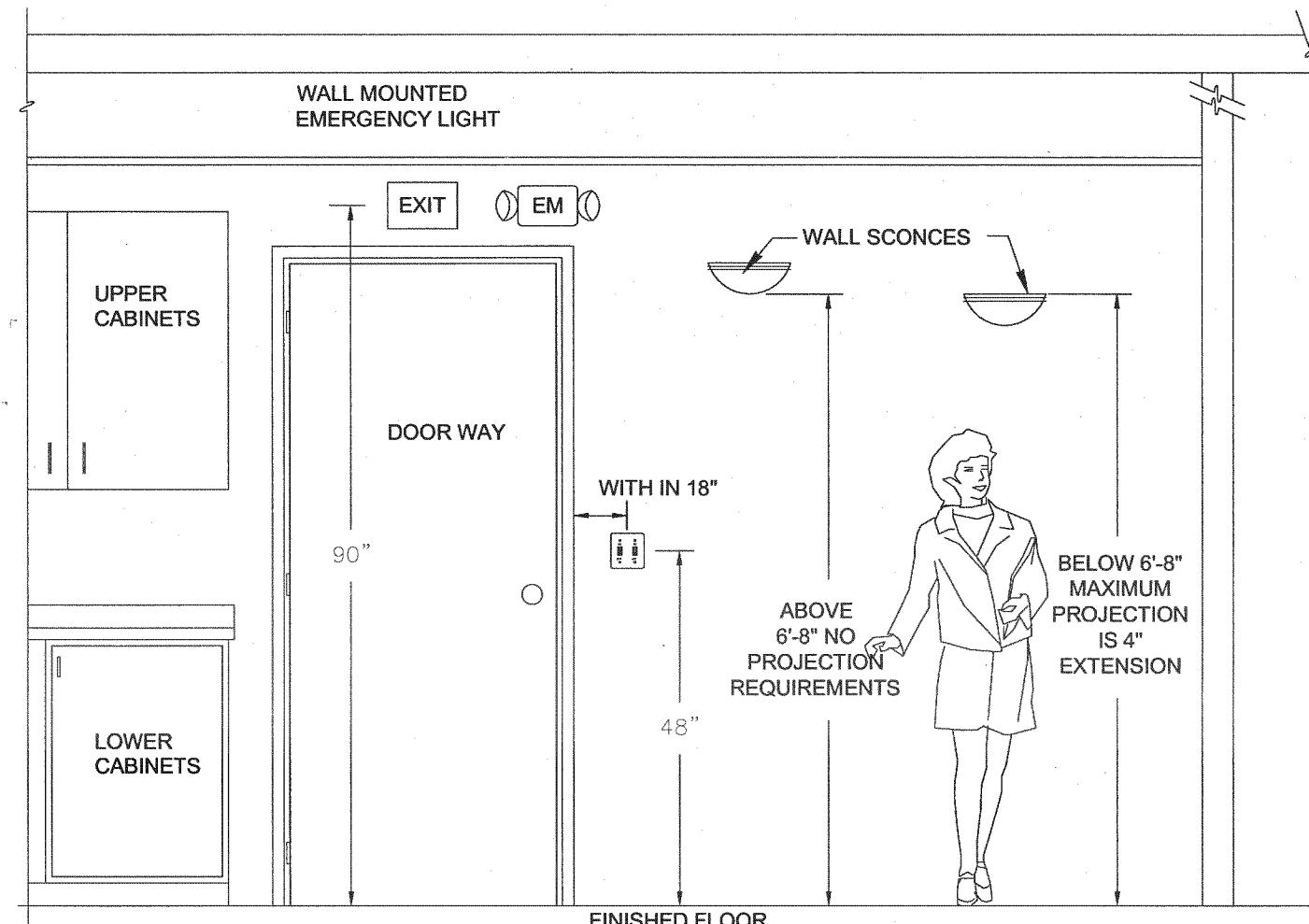
NOT TO SCALE



NOTE:
2000 TEST WIRE HANGER AT EACH CORNER OF FIXTURE (TOTAL OF 4) OR 1 CADDY CLIP 515 PER SIDE (TOTAL OF 4)

RECESSED GRID TROFFER LIGHT FIXTURE DETAIL

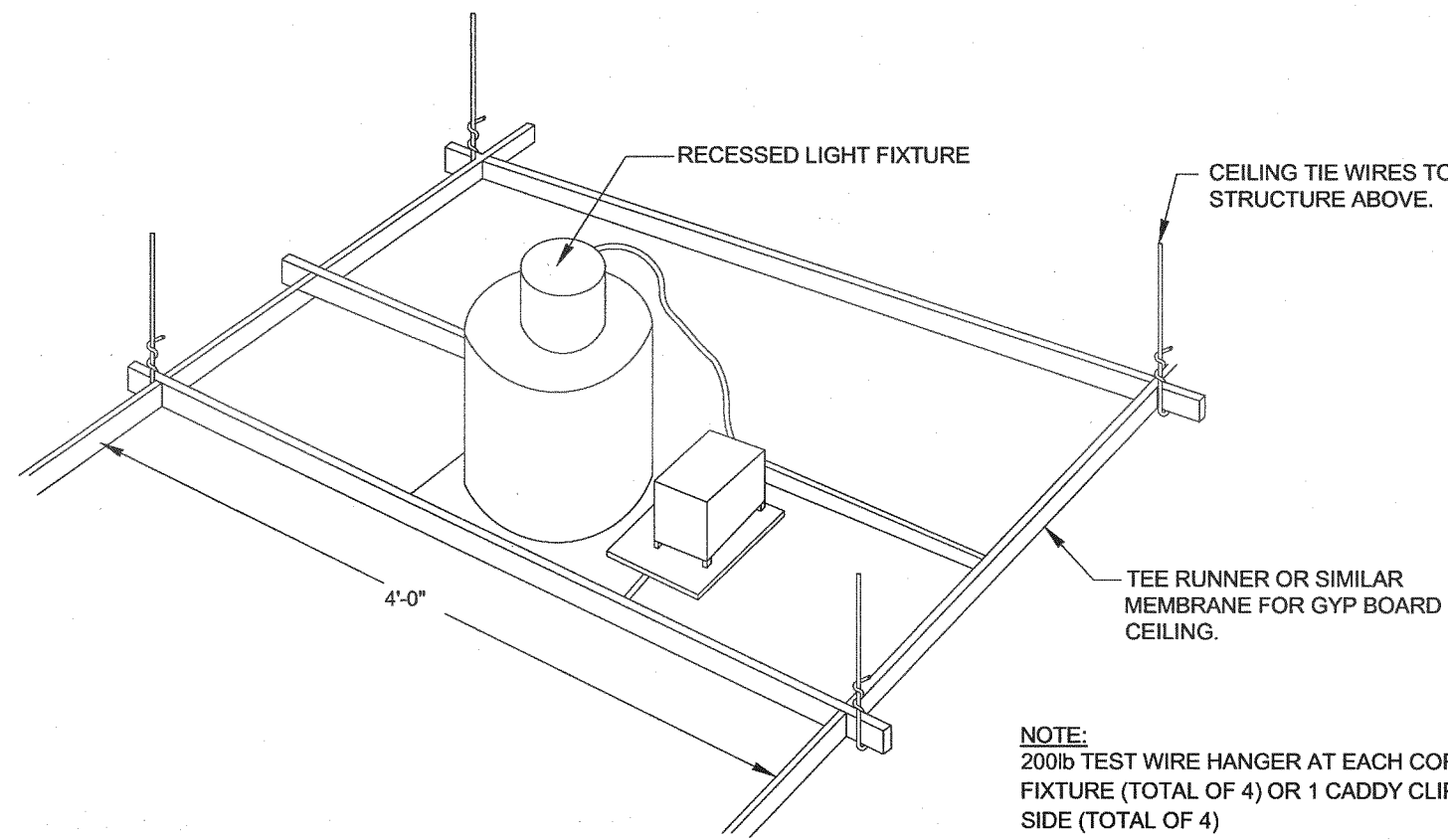
NOT TO SCALE



DETAIL NOTES:
1. ALL DEVICES SHOWN ON THIS DETAIL ARE FOR REFERENCES OF MOUNTING HEIGHTS ONLY. THE ELECTRICAL CONTRACTOR SHALL FIELD ADJUST THE HEIGHTS AND LOCATIONS OF THE DEVICES AS REQUIRED FOR PROPER MOUNTING.
2. ALL DEVICES REQUIRED FOR THIS PROJECT MAY NOT APPEAR ON THIS DETAIL. ALL ITEMS SHOWN ON THIS DETAIL MAY NOT BE REQUIRED FOR THIS PROJECT.
3. THE AMERICANS WITH DISABILITIES ACT, KNOWN AS ADA, AFFECTS LIGHT FIXTURES USED IN CIRCULATION OR EGRESS SPACES. IN PRACTICE THIS MEANS THAT WALL MOUNTED FIXTURES LOCATED BELOW 6'-8" AFF IN HALLS, CORRIDORS, PASSAGEWAYS OR AISLES, MUST BE NO GREATER THAN 4" DEEP. THE ADA AFFECTS CONSTRUCTION FOR BOTH NEW AND EXISTING BUILDINGS.

LIGHTING DEVICE MOUNTING HEIGHT DETAIL

NOT TO SCALE

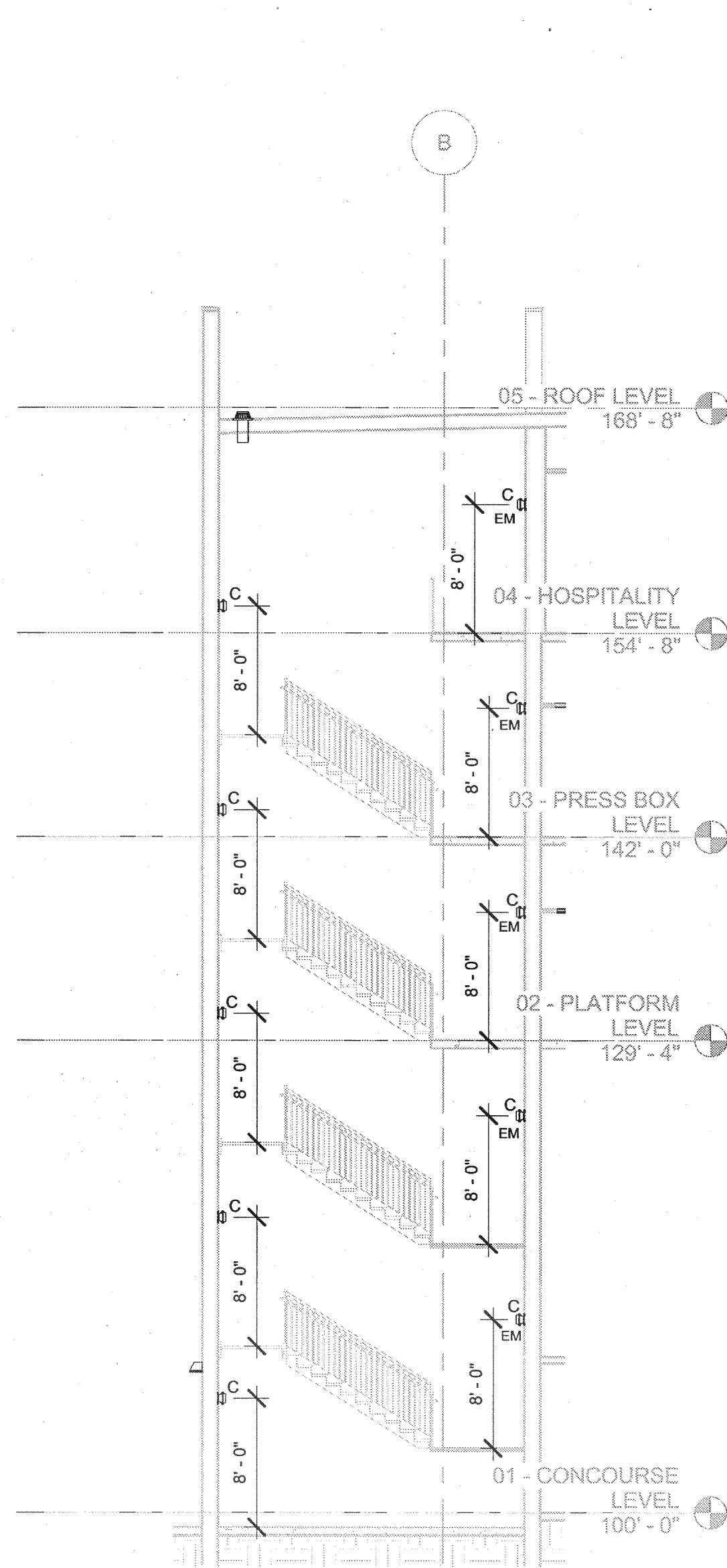


NOTE:
2000 TEST WIRE HANGER AT EACH CORNER OF FIXTURE (TOTAL OF 4) OR 1 CADDY CLIP 515 PER SIDE (TOTAL OF 4)

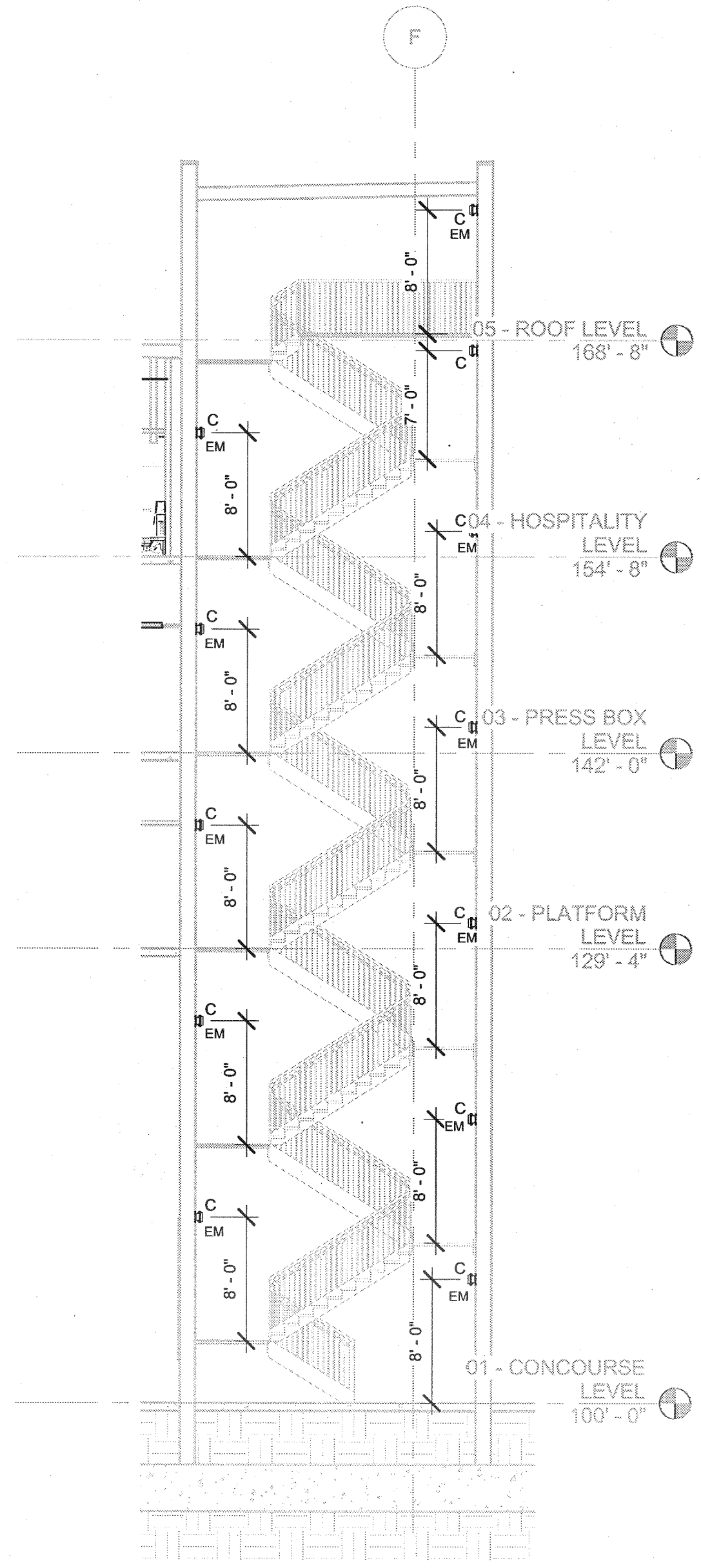
RECESSED LIGHT FIXTURE DETAIL

NOT TO SCALE

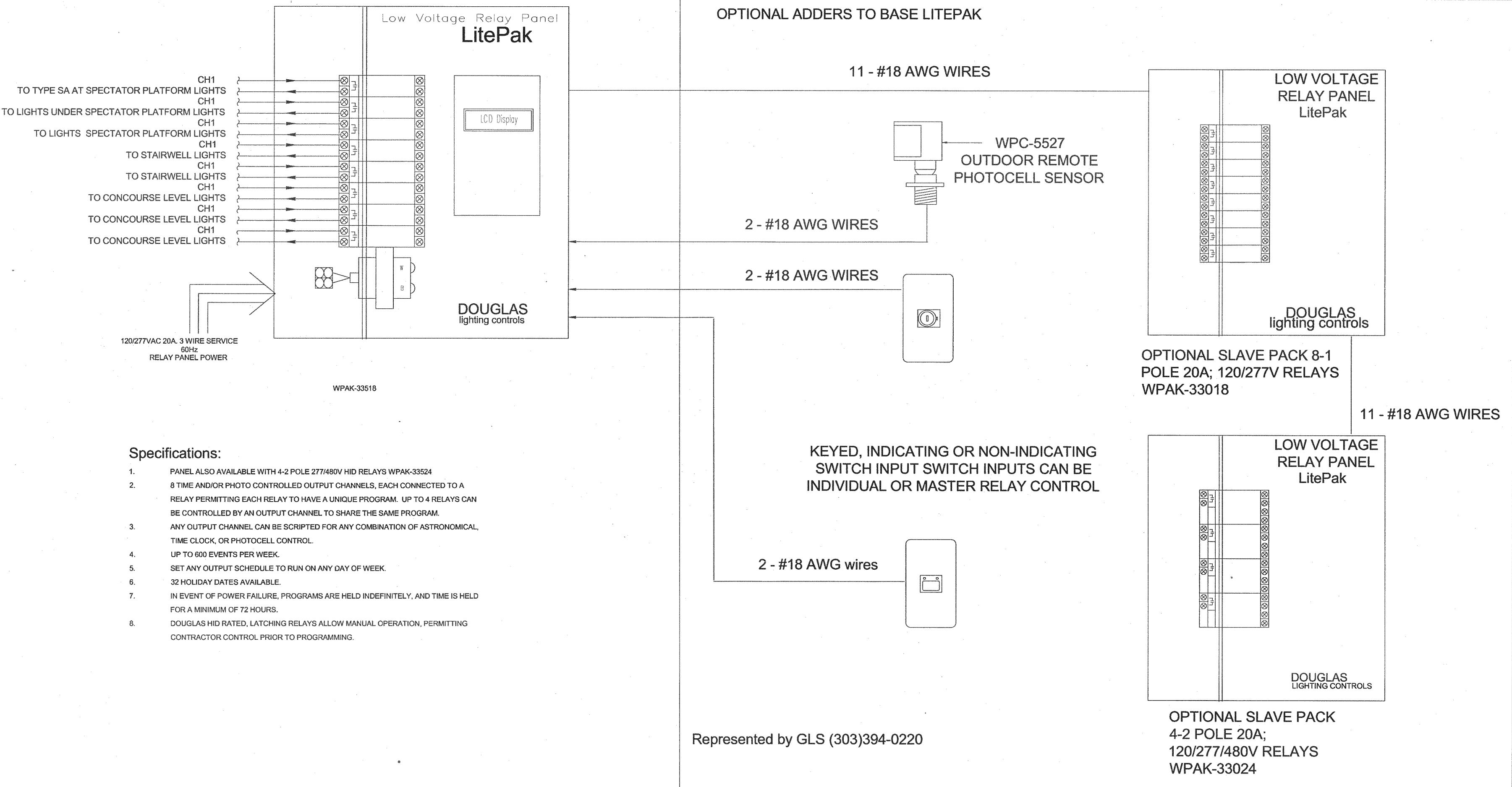
TYPICAL ALL H.I.D., FLUORESCENT, & INCANDESCENT FIXTURES



SOUTH STAIR TOWER LIGHTING ELEVATION
1/8" = 1'-0"



NORTH STAIR TOWER - LIGHTING ELEVATION
1/8" = 1'-0"



DETAIL FOR LITEPAK SELF CONTAINED RELAY PANEL
PROVIDE QTY. AND CAPACITIES AS INDICATED ON ELECTRICAL ONE-LINE AND PLANS.

EXTERIOR LIGHTING CONTROL SCHEMATIC

NOT TO SCALE

All information appearing herein shall not be duplicated, discharged or otherwise used without the written consent of Sink Combs Dethlefs.

SINK COMBS DETHLEFS

A Professional Corporation for Architecture

Copyright by Sink Combs Dethlefs, P.C.
475 Lincoln Street, Suite 100
Denver, Colorado 80202
303.398.0220
FAX 303.622.0222

Issues/Revisions:	Date:
SCHEMATIC DESIGN	12/10/10
DESIGN DEVELOPMENT	02/04/11
CD COORDINATION SET	03/02/11
95% CD SET/PERMIT SET	03/18/11
100% CD SET	05/06/11
BULLETIN 01	06/17/11

LINCOLN PARK STADIUM IMPROVEMENTS

GRAND JUNCTION, CO

SCD Project No.: 10-158

LIGHTING - SCHEDULES AND DETAILS

Drawn By:
Checked By:

E1.30