

## XBEC

### Type 1, Baffle Filter Single Wall - Exhaust Only Crossover

Model	Hood Length (in.)	Width (in.)	Bottom Width (in.)	Height (in.)		Exhaust Volume (CFM)	Exhaust SP (in. w.g.)	Double Island
				Front	Back			
XBEC	60	36	26	14	24	1125	0.719	No

#### Selected Options & Accessories:

Option or Accessory	Description
Mounting Height	72 in. off Finished Floor.
Integral Air Space	Factory Mounted on Back - 3" wide Zero Clearance 15 lbs
Ceiling Enclosures	30 in. High on Left Front Right
Filter Type	Stainless Steel Baffle Filters 14 lbs
Backsplash Panel	91 in High 96 in Long 0 in Wide 91 lbs
Additional Divider Bar	For Backsplash 84 in Qty 2
J-Channel	For Backsplash 120 in Qty 2
Left Mini End Skirt	26 in High 26 in Top Width 0 in Bottom Width 4 lbs
Right Mini End Skirt	26 in High 26 in Top Width 0 in Bottom Width 4 lbs

**Material:** 430 SS Where Exposed  
**UL Listing:** UL 710 w/out Exhaust Fire Damper

**Features:**  
 Performance Enhancing Lip (PEL)  
 Standing Seam Construction for Superior Strength  
 Stainless Steel Finish for Higher Corrosion Resistance

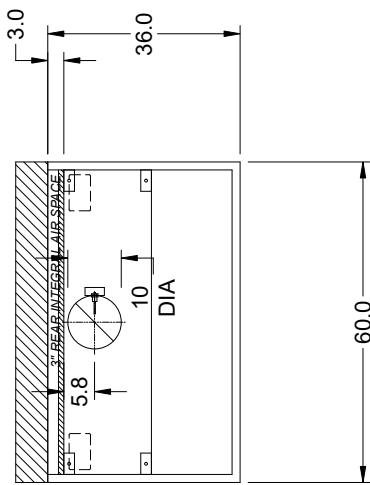
**Hood End Conditions:**  
 Back Wall - Full Combustible

#### Section Data:

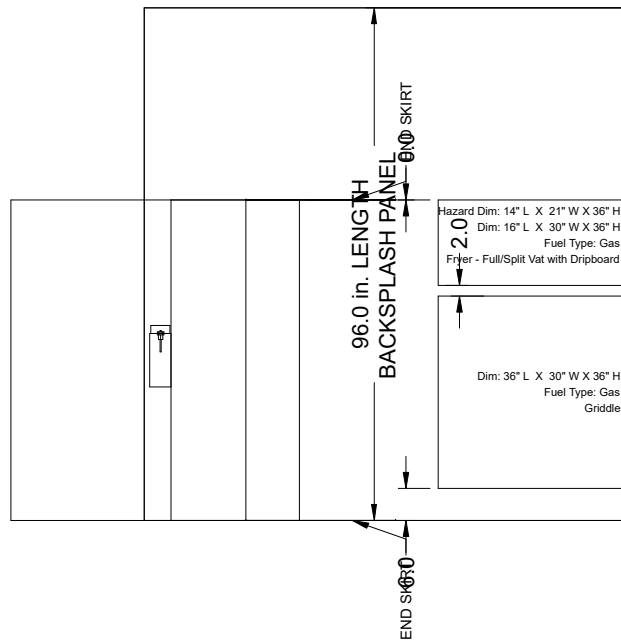
Length (in.)	Volume (CFM)	Exhaust Rate (CFM/FT)	SP (in. wg)	Filter Qty		Filter Ht. (in.)	Cooking Load	Light Qty	Light Type	Foot Candles	Drain Location	Hood Weight (LBS)
				16" W	20" W							
60	1125	225	0.719	0	3	16	Medium	0	None	na	Left/Right	130.1

#### Exhaust Collar Data:

Collar Num.	Collar Size (LxW) in. or Diameter (in.)	Pos. Off Left (in.)	Pos Off Back (in.)	Velocity (fpm)	Mounting Option
1	10	30	5.75	2063	Factory Mounted Exhaust Collar(s)



MARK: KH-1 - SECTION 1  
PLAN VIEW

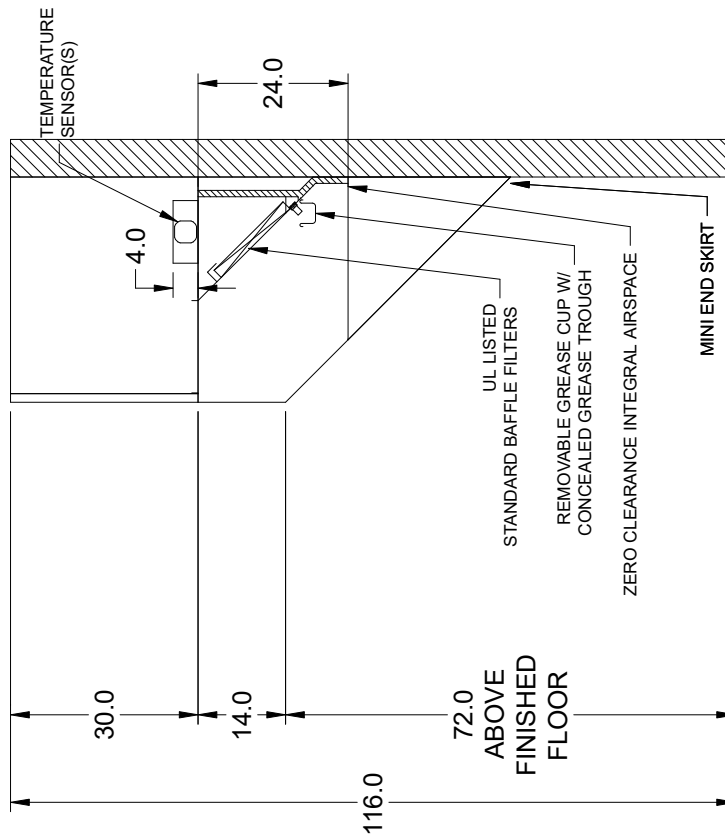


MARK: KH-1 - SECTION 1  
ELEVATION VIEW

NOTE: All dimensions are in units of in.



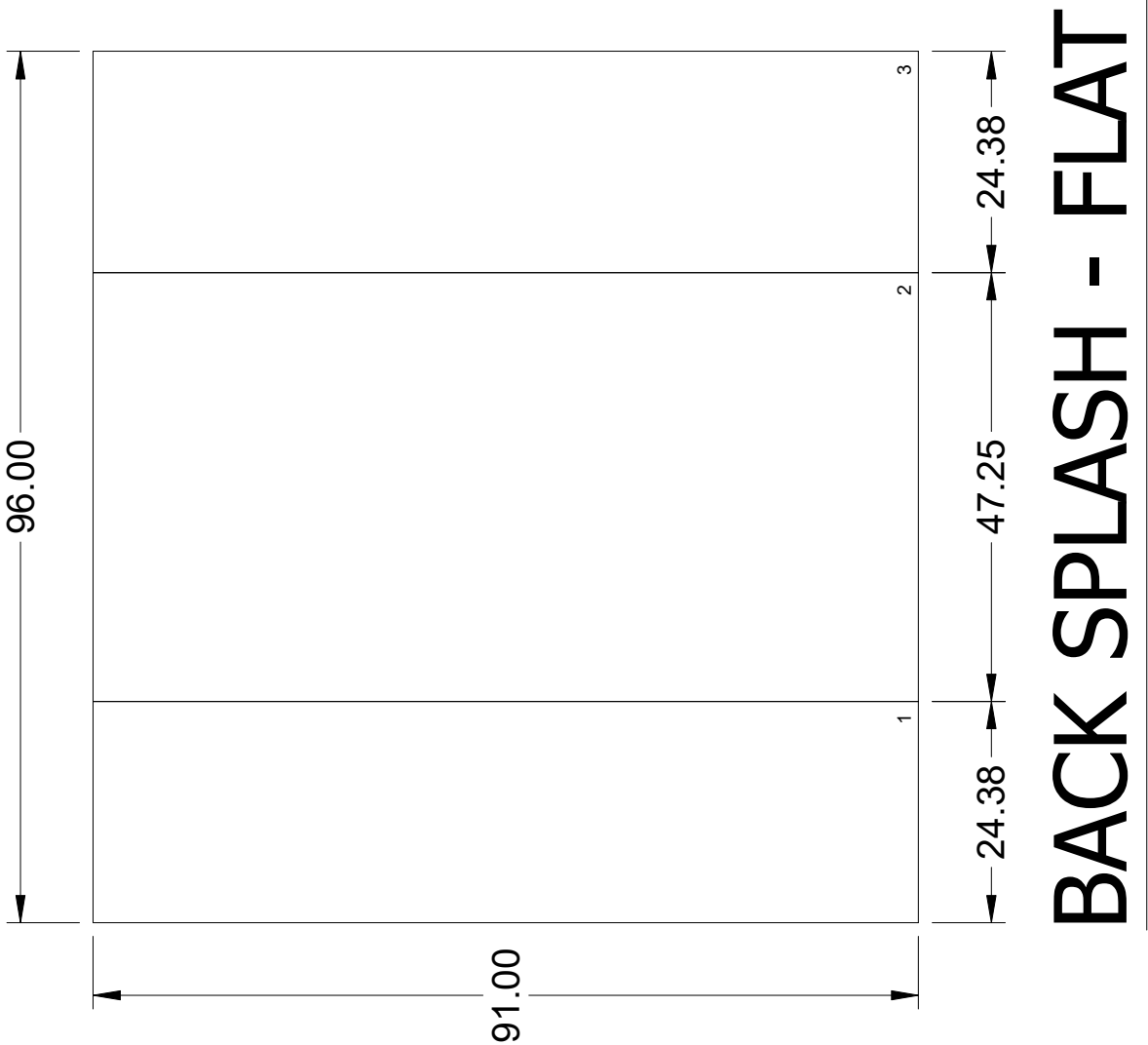
Hanger Bracket Locations			
Sec #	Brkt #	Distance Off Left (in)	Distance Off Front (in)
1	1	3.50	32.00
1	2	56.50	32.00
1	3	3.50	17.60
1	4	56.50	17.60
Bracket Mounting Position for a 4 Bracket Hood			



MARK: KH-1

NOTE: All dimensions are in units of in.





NOTE: All dimensions are in units of in.



## Ansul R-102 Wet Chemical Fire Suppression System

### Scope:

Pre-Pipe With Parts and Factory Coordinated Installation

### Hood Fire Suppression System

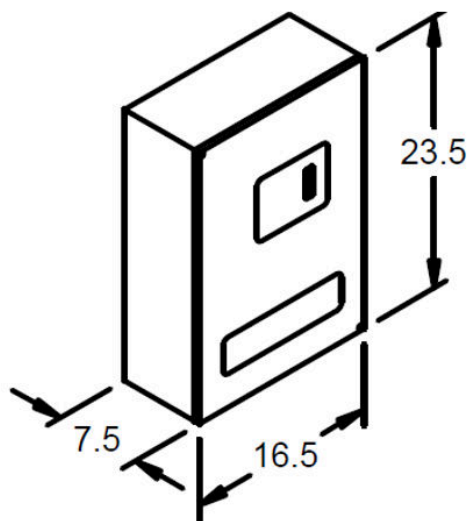
Detection Type	Mechanical
Coverage	Appliance Specific
Hood Mark(s) Connected	
Mounting Location	Remote-mounted enclosure for first tank & release assembly and bracket assembly only for additional tanks if applicable (see figures below)
System Size	3 Gallon
Flow Points	Maximum of 11

### Options and Accessories for Hood Fire System Provided from Factory

Regulated Release Assembly	QTY of 1
3 Gallon Tank Assembly	QTY of 1
Gas Valve	2", mechanical
Manual Pull Stations	QTY of 1
Microswitch	QTY of 1
Alarm Initiating Switch	QTY of 1
Metal Blow Off Caps	Included

### Important Notes

- The manner in which the parts included in the scope of this fire system are supplied may vary. They could be shipped from the fire suppression manufacturer, shipped loose with the hood, connected directly to the hood, or supplied directly to the installing distributor.
- Must maintain 8 inch clearance between top of hood and pipe connections for installation (includes piping and workspace clearance).
- The amount of supply pipe that should not be exceeded per system is 32 ft., which includes all pipe used along the length the hood, between hoods, and the pipe needed to connect to the tanks where they are mounted.
- Pull station locations must be a minimum of 10 ft. and a maximum of 20 ft. from the hoods and in the path of egress. They also must be 40-48 in. from the finished floor.
- Systems are pre-piped for a specific appliance line-up. If appliance types and sizes differ from what is shown on the hood submittal, this may result in a field re-pipe which is outside the scope defined here.



---

## Gas Valve

Quantity: 1

Ansul

Mechanical

2 in.

---

**Labor Information:**

Hook-up of detection line and supply line is included.

Surface mounting of the manual pull station in a pre-determined location is included.

Charging and arming of the system is included.

Permit Included

Hood Puff Test Fee Included

Special Drawing Fees Included

**Items which may be supplied by the factory, but are not installed or hooked-up by the factory OR the installing distributor:**

Gas valve (not applicable for PCU)

Microswitch(es)

Remote mounted cabinets, enclosures, or tank brackets

**Not included unless explicitly stated elsewhere in the quote as included:**

Special, signed, or sealed drawings required to satisfy a state or local code

Parts or labor required to correct piping due to cooking equipment changes or deviation from approved drawings

More than two trips to the jobsite, special transportation, or overnight lodging requirement in remote areas. Typical travel distance is defined as the first 50 miles from the distributor's office

A shut-off device (e.g. shunt-trip breaker) for electric cooking equipment

All electrical connections required to shut down fan(s), electric cooking equipment, activate an alarm system, etc. aside from what is explicitly stated as "factory-wired" in the Accurex control's scope (if provided)

Installation of the gas shut-off valve

Pre-test

Full dump test or any other system test requirement outside of a standard puff test

Special classes or additional labor for access to security sensitive areas

Union labor, government labor, or prevailing wages required for field hook-up

Any dismantling or reassembly required where access to the fire suppression piping has been blocked

Plan examination fees

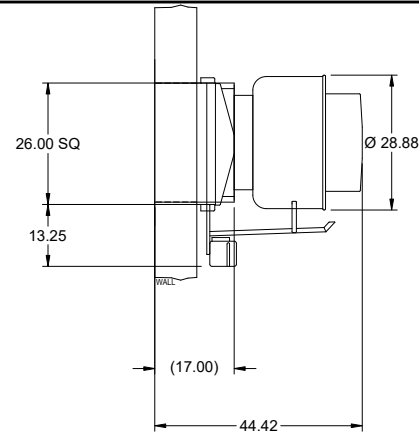
Rough-in conduit for remote pull station (for flush mounted pull station) or gas valve

Additional remote pull stations beyond the quantity specified in the submittals

## Model: XCUE-140-VG

### Direct Drive Upblast Centrifugal Wall Exhaust Fan

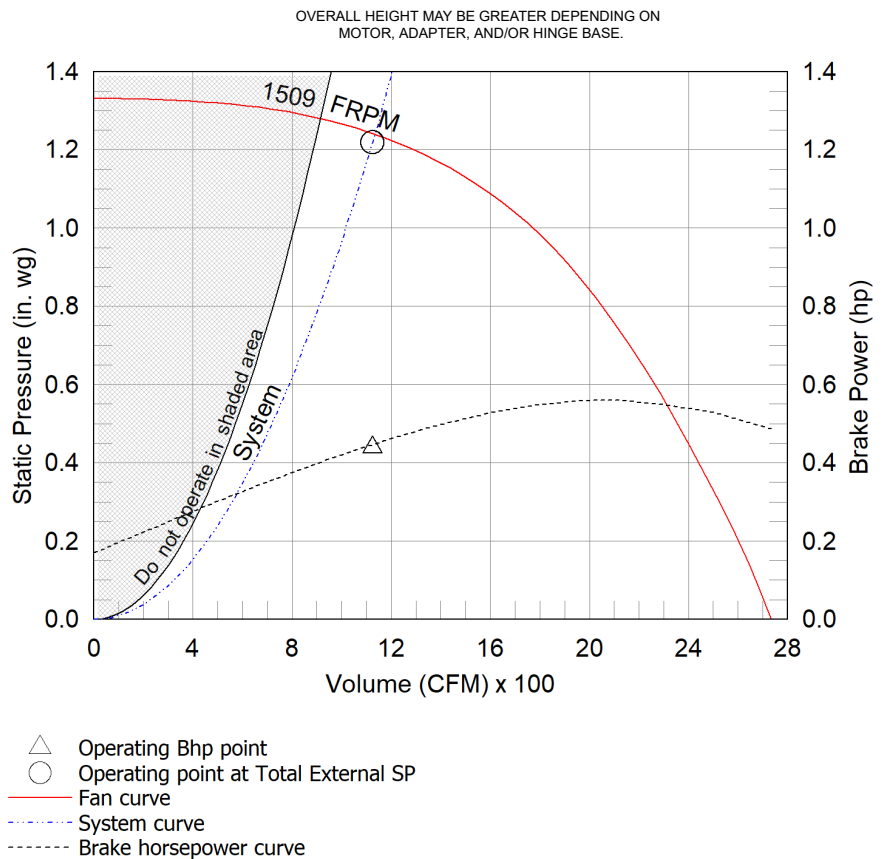
Dimensional	
Quantity	1
Weight w/o Acc's (lb)	74
Weight w/ Acc's (lb)	108
Weight w/ Acc's and Curb (lb)	157
Standard Curb Cap Size (in.)	26 x 26
Wall Opening with Curb(in.) through wall	26 x 26



Performance	
Requested Volume (CFM)	1,125
Actual Volume (CFM)	1,125
Total External SP (in. wg)	1.219
Fan RPM	1509
Operating Power (hp)	0.44
Elevation (ft)	4,839
Airstream Temp.(F)	70
Air Density (lb/ft3)	0.063
Tip Speed (ft/min)	5,779
Static Eff. (%)	49

Misc Fan Data	
Fan Energy Index (FEI)	
Outlet Velocity (ft/min)	654

Motor	
Motor Mounted	Yes
Size (hp)	1
Voltage/Cycle/Phase	115/60/1
Enclosure	ODP
Motor RPM	1725
Efficiency Rating	High
Windings	1
FLA (Amps)	13
Min. Circuit Ampacity (MCA)	16
Max. Overcurrent Protection (MOP)	30
Short Circuit Current Rtg (SCCR)	5 kA



#### Notes:

All dimensions shown are in units of in.

\*NEC FLA, MCA and MOP are for reference only – based on tables 430.248 or 430.25 of National Electric Code 2020. Actual motor FLA may vary, for sizing thermal overload, consult factory. MCA and MOP values shown only account for the motor, not accessories (damper actuator, field supplied VFD, etc).

LwA - A weighted sound power level, based on ANSI S1.4 dBA - A weighted sound pressure level, based on 11.5 dB attenuation per Octave band at 5 ft - dBA levels are not licensed by AMCA International

Sones - calculated using ANSI/AMCA 301 at 5 ft

#### Sound Power by Octave Band

Sound Data	62.5	125	250	500	1000	2000	4000	8000	LwA	dBA	Sones
Inlet	79	69	71	70	64	57	55	51	70	59	9.3



## Model: XCUE-140-VG

### Direct Drive Upblast Centrifugal Wall Exhaust Fan

#### Standard Construction Features:

- Aluminum housing - Backward curved composite (sizes 60-95) or aluminum (sizes 99-300) wheel - Aluminum curb cap with prepunched mounting holes - Drain trough - Ball bearing motors (sizes 85-300 and all Vari Green), sleeve bearing motors (sizes 60-80) - Motor isolated on shock mounts - Corrosion resistant fasteners - Removable power pack - Tool-less hood entry

#### Selected Options & Accessories:

Motor - Vari-Green EC motor  
Control - 0-10VDC Input, (no control provided, signal supplied by others)  
Larger Curb Cap Size - 26 Square  
Sidewall Mounting - Fan Configured for Wall-Mounted Applications  
Curb will be Through Wall, 9 in. Wall Thickness  
UL/cUL 705 Listed - Supplement SC - "Power Ventilators for Restaurant Exh. Appliances" (Formerly UL 762)  
Switch, NEMA-3R, Toggle,  
Junction Box Mounted & Wired  
Hinge, Factory Installed  
High Temp Curb Seal Rated for Continuous Duty at 1500 F (Factory Attached)  
Grease Pan Kit - Containment Configured for Wall-Mounted Applications (PN:879137)  
Grease Trap (PN:475538)  
Aluminum Wheel Material  
Unit Warranty: 1 Yr (Standard)

#### Selected Sub Marks

See individual submittals for full details  
GPF-26-G17

***The Vari-Green Motor included in this order has a 'Multi-Voltage' ability. The red wire on the motor is called a 'Voltage Doubler', and when it is connected the motor can be powered by 115V.***

***If the Red wire is disconnected, then the motor can be powered with 208-230/277V. The motor will leave the factory with the voltage doubler wired per the order.***

## Vari-Green Motor & Control Options

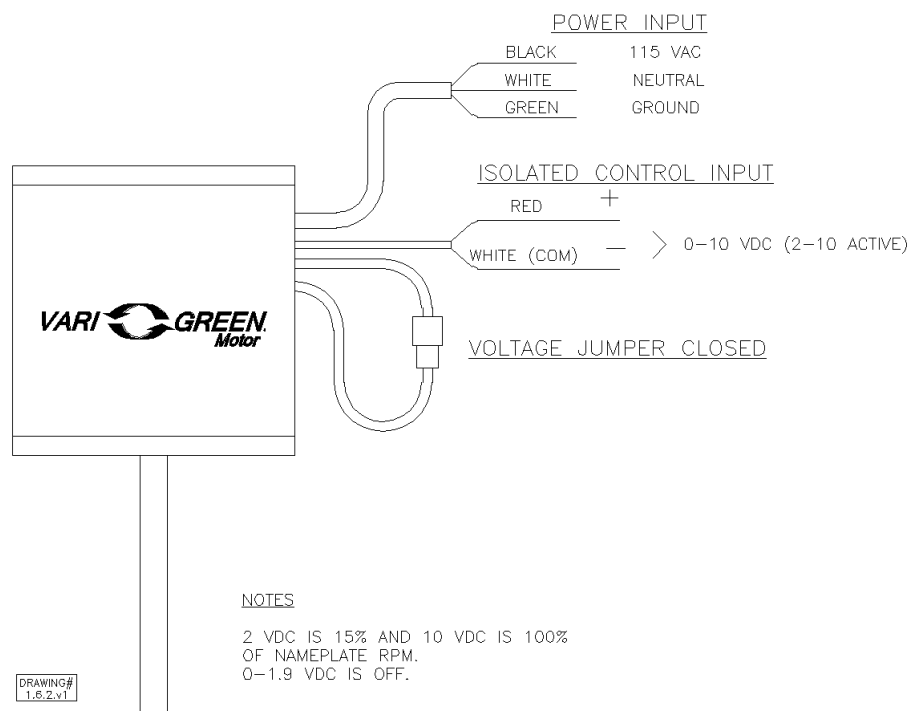
An EC motor that uses AC input power and internally converts it to DC power. Motor accepts a 0-10VDC control signal along with a 24V source to power controls in the motor. Motor is operable in the 2-10VDC range and off while in the 0-1.9VDC range. Vari-Green motors feature a soft-start and inherent thermal and current protection built into each unit. Inrush current at start up is eliminated and the motor will automatically reduce speed or turn off if overloaded or it becomes too hot.

### Motor Configuration

Input Voltage: 115  
 Speed Reference: 0-10VDC  
 Permanent Dial: No  
 Balance Dial Included: No

### Control Configuration

Control Type: 0-10 VDC  
 Transformer: None

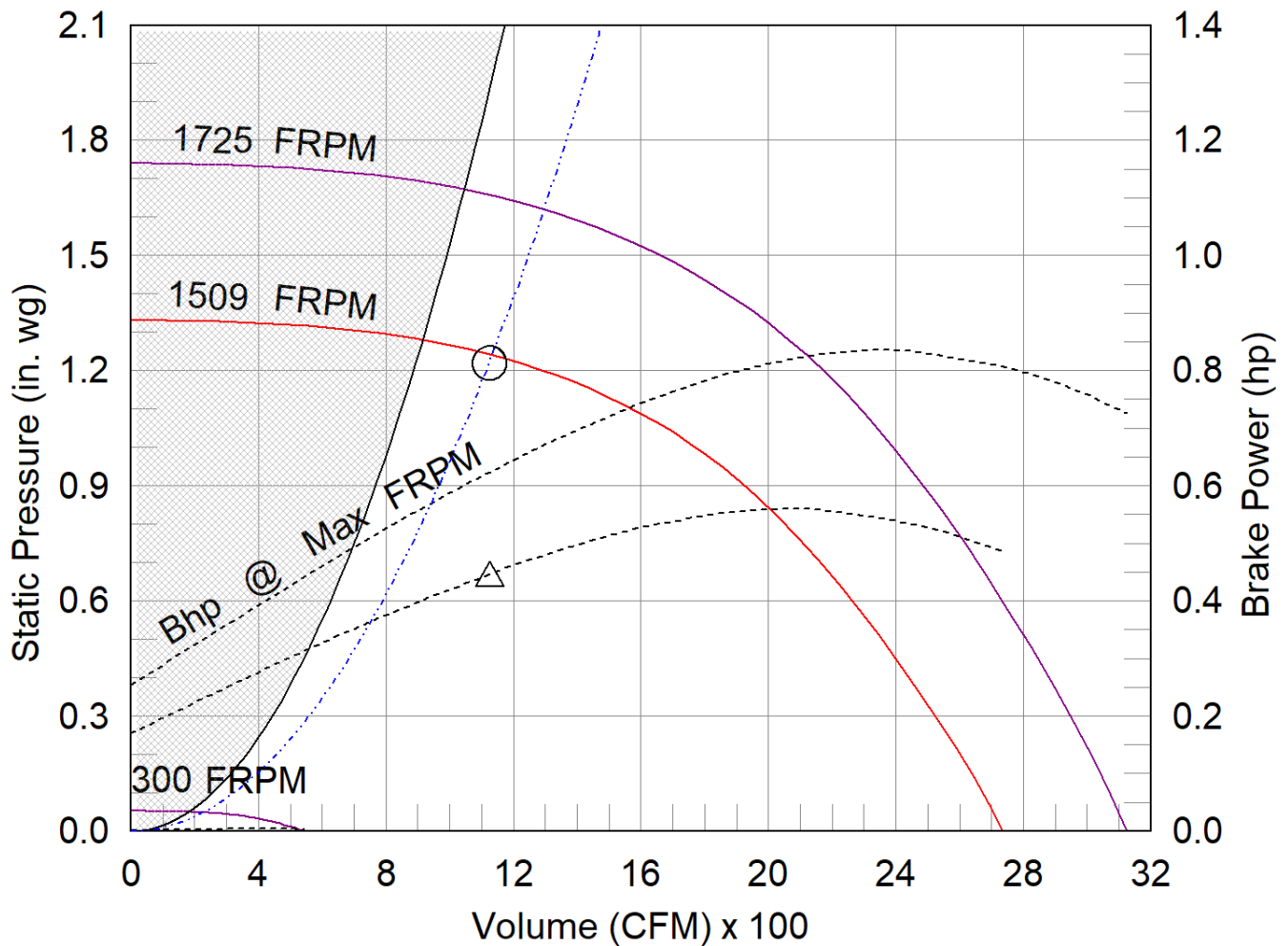


## XCUE-140-VG

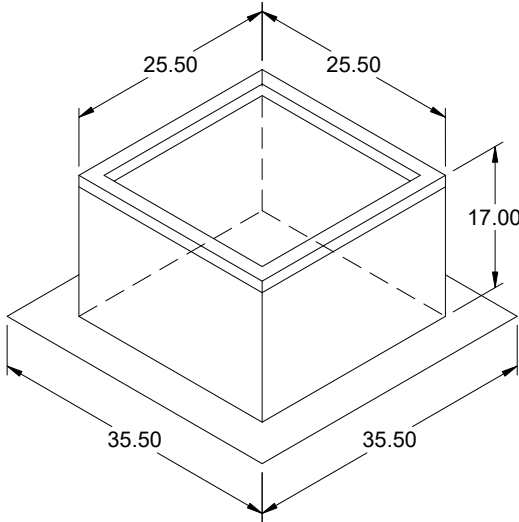
## Min/Max Fan Curve

### Performance

Requested Volume (CFM)	Actual Volume (CFM)	Total External SP (in. wg)	Fan RPM	Operating Power (hp)
1,125	1,125	1.219	1509	0.44



- △ Operating Bhp point
- Operating point at Total External SP
- Construction Limit
- Fan curve
- Min FRPM
- ... System curve
- Brake horsepower curve



## Model: GPF

### Roof Curb

#### Standard Construction Features:

- Roof Curb fits between the building roof and the fan mounted directly to the roof support structure - Constructed of either 18 ga galvanized steel or 0.064 in. aluminum - Straight Sided without a cant - 2 in. or 5 in. mounting flange - 1 in. thick 3 lb density insulation - Height - Available from 8 in. to 42 in. as specified in 0.5 in. increments. Notes: - The maximum roof opening dimension should not be greater than the "Actual" top outside dimension minus 2 in.. - The minimum roof opening dimension should be at least 2.5 in. more than the damper dimension or recommended duct size. - The Roof Opening Dimension may or may not be the same as the Structural Opening Dimension. - Damper Tray is optional and must be specified. Tray size is same as damper size. - Security bars are optional and must be specified. Frames and gridwork are all 12 ga steel.

\*\*\*This curb can be mounted on the roof or wall (with a sidewall mounted XRUD or XRUB fan).

#### General

Tag	Qty	Model	Sizing Method	Undersizing (in.)	Weight (lb)	Shipped Assembled	Union Label
	1	GPF-26	Nominal	0.5	49	Yes	No Preference

#### Dimensions

Curb Height (in.)	Nominal Outside Width (in.)	Nominal Outside Length (in.)	Actual Outside Width (in.)	Actual Outside Length (in.)	Actual Inside Width (in.)	Actual Inside Length (in.)	Flange Width (in.)	Flange Length (in.)	Hinge Base Width* (in.)	Hinge Base Length* (in.)
17	26	26	25.5	25.5	22	22	35.5	35.5	25	25

\*May not be applicable

#### Accessories

Material	Security Bars	Liner	Insulation (in.)	Insulation R Value
Galvanized	No	No	None	None

## Variable Volume

Accurex Kitchen Controls

### Standard Construction Features:

Includes control system, VFDs (unless otherwise stated), Temperature Sensors, Touchscreen. IMC 507.1.1 compliant. UL/ULC Listed.

### Options & Accessories:

Mounting Option	Ship Loose Enclosure - (12 x 20 x 6)
Exhaust Fan Quantity	1
Hood Light Control	Yes
User Interface	Full Color Touchscreen
Touchscreen Mounting Location	Face Mount on Control Package (includes 4 ft. of cable)
Exhaust During Fire	Exhaust fans will run at max speed when in fire mode

### Controlled Fans:

Fan Mark	Fan Type	Supplied By	Phase	HP	Voltage	NEC FLA	Starter/VFD Required	Starter/VFD Provided
KEF-1 (Wall)	Exhaust	Manufacturer	1	1	115	16.0	No	No

### Controlled Hood Sections and Fan Relationships:

KH-1 Section - Number of Sensors = 1	
	Exhaust Fan Name - KEF-1 (Wall)

