



Purchasing Division

**ADDENDUM NO. 6**

**DATE:** February 6, 2026  
**FROM:** City of Grand Junction Purchasing Division  
**TO:** All Offerors  
**RE:** Crosby Avenue Improvements Project IFB-5805-26-DD

Offerors responding to the above referenced solicitation are hereby instructed that the requirements have been clarified, modified, superseded, and supplemented as to this date as hereinafter described.

Please make note of the following questions/answers/clarifications:

1. **Question:** For line 38 — **Temporary sanitary sewer bypass for MH D2-252-026** — is there any available flow data on those lines? There appears to be substantial flow in the two lines feeding that manhole, and I want to make sure we fully understand the bypass requirements.

**Answer:** The City's flow monitoring data for manhole D2-252-152 (across the UPRR tracks) from 2020 is attached. The Contractor shall provide redundancies to accommodate equipment failures.

**3.2.1 Dry Weather Flows**

DWF is comprised of ground water infiltration and sanitary flows. Groundwater infiltration or permanent infiltration is extraneous flow that is conveyed through the ground to the collection system during dry weather periods. Sanitary flows are defined as the flow conveyed from homes, businesses, and other water users to the collection system. For this 2020 WW Basin Update, the ground water infiltration and sanitary flows were evaluated together as total DWF within the model. To allocate flows within the model, diurnal patterns and per capita flow rates were quantified based on the DWF period. The dry weather period lasted 2 weeks from June 8 through June 21. An overview of the dry weather monitoring data is included in Table 3.3. Diurnal patterns were developed for both weekday and weekend days for each monitoring site and are illustrated in Figures 3.4 and 3.5, respectively.

Table 3.4 Dry Weather Flow Data Summary

Manhole ID	Meter ID	Average Flow, mgd <sup>(1)</sup>	Peak Flow Rate, mgd <sup>(2)</sup>	Minimum Flow Rate, mgd <sup>(2)</sup>	DWF Peaking Factor <sup>(3)</sup>
D2-252-152	GJ07	1.05	1.35	0.61	1.29

Notes:

- (1) Daily average flow rates for selected DWF period.  
(2) Instantaneous flow rate for selected DWF period.  
(3) Calculated as peak flow rate/average flow rate.

2. **Question:** Also, for line 37 — Remove and replace D2-252-026, would a **cast-in-place manhole base** be acceptable?  
**Answer:** Yes
3. **Question:** Additionally, will **corrosion protection** be required on the manhole per **Section 102.11 of the City specification**?  
**Answer:** Yes
4. **Question:** . I was informed by the Colorado sales rep (Illumination Systems) for Sternberg that they would not provide breakout pricing for anchor bolts and breakaway couplings required for the owner furnished light standard and luminaires. If they won't provide them, it would be impossible to get the required documentation for CDOT. The items could be purchased from other sources, but the other sources would have no idea what their products were being used for and therefore unable to provide the statement guaranteeing the products could withstand 100MPH winds. This could only be provided by the manufacturer having the knowledge required to make that statement.  
**Answer:** Thank you for providing this information. The City will provide the anchor bolts and breakaway couplings as part of the install-only bid item #85.

The original solicitation for the project noted above is amended as noted. All other conditions of the subject remain the same.

Respectfully,



Dolly Daniels, Senior Buyer  
City of Grand Junction, Colorado

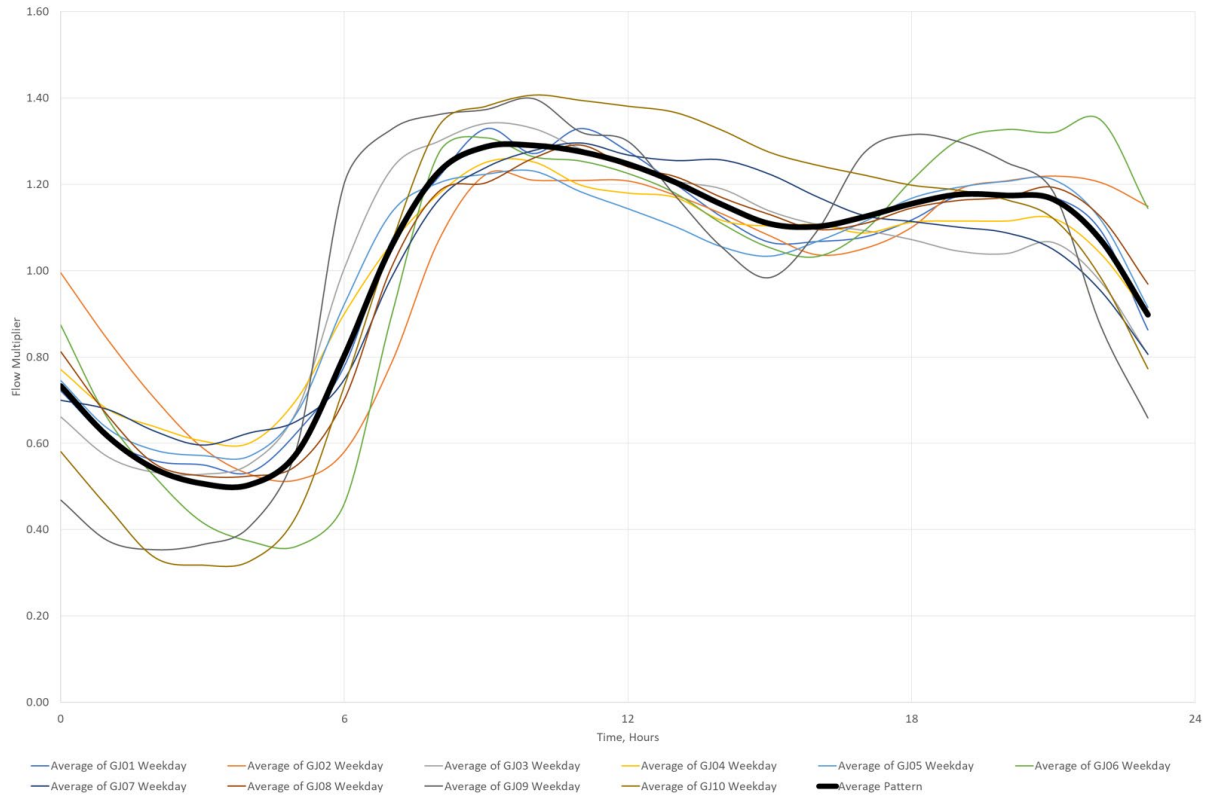


Figure 3.4 Weekday Diurnal Pattern

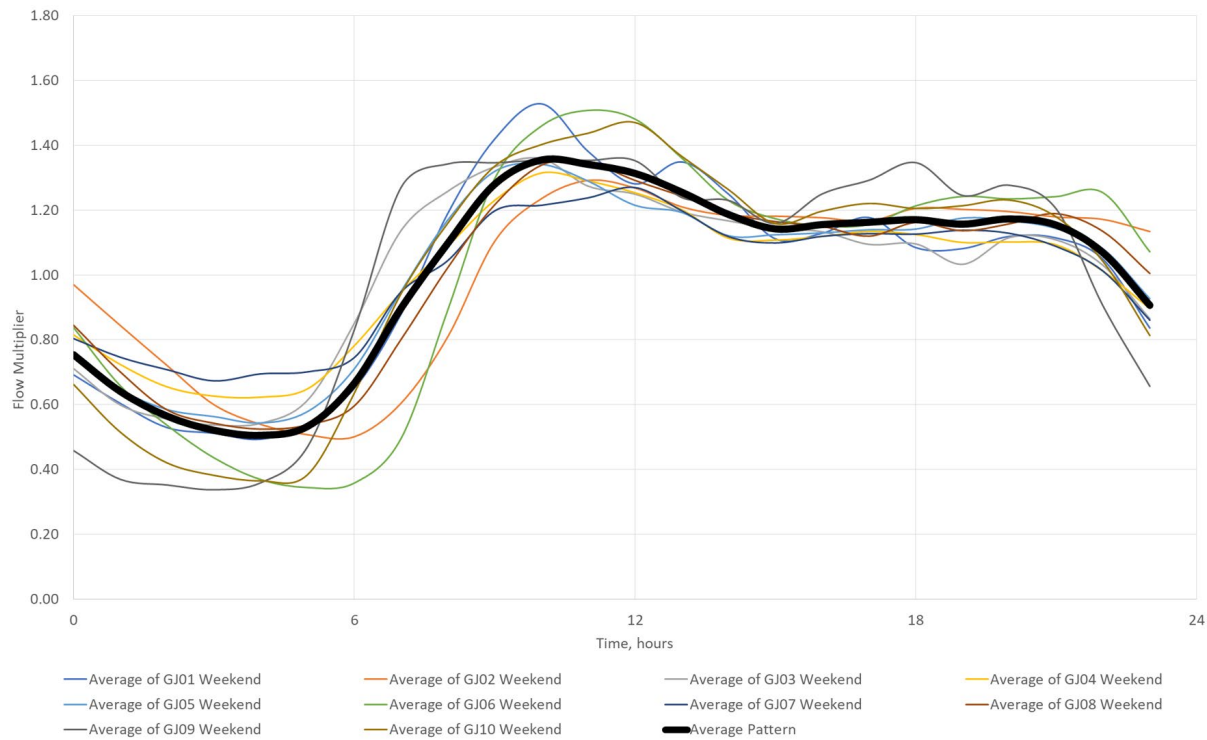


Figure 3.5 Weekend Diurnal Pattern