



**BARKER  
RINKER  
SEACAT**  
ARCHITECTURE

brsarch.com



**GRAND JUNCTION COMMUNITY  
RECREATION CENTER**  
**GRAND JUNCTION, CO**



Project Number: 23357  
Issue: CONFORMANCE SET  
Date: 11.26.2024  
Drawn By: MDG  
Checked By: RIG

Revisions:  
Rev. Description Date:  
1 Addendum #1 2024.08.15  
2 Addendum #2 2024.08.29  
3 Addendum #3 2024.09.25  
4 Addendum #4 2024.11.26  
5 Addendum #4 R1 2024.12.20

Sheet title:  
OVERALL PIPING PLAN

**PL300**  
© 2017 Barker Rinker Seacat Architecture

**DRAIN SCHEDULE**

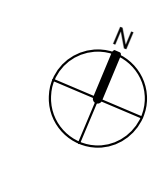
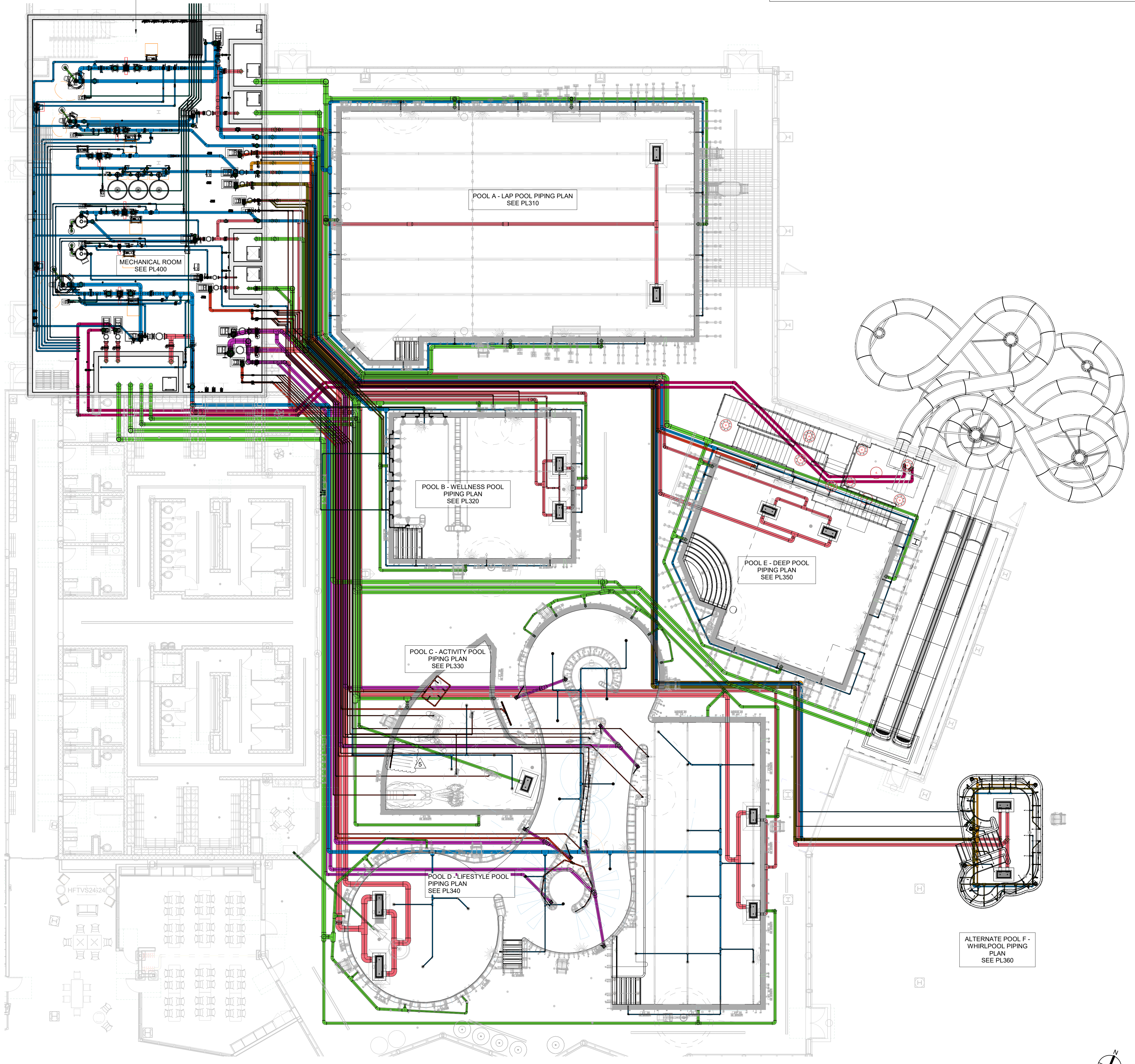
DRAIN / GRATE ID	DETAIL #	MFR & MODEL #	DRAIN/GRATE MFR SPECIFICATIONS					DESIGN DATA						
			DIMENSIONS		OPEN AREA		MAX ALLOWABLE FLOW PER GRATE	CONNECTED PUMPS	SYSTEM TOTAL DESIGN FLOW	DRAIN / GRATE QTY	FLOW PER GRATE	VELOCITY	SYSTEM MAXIMUM	
			WIDTH (ft)	LENGTH (ft)	PER GRATE (in <sup>2</sup> )	TOTAL (in <sup>2</sup> )							(gpm)	FLOW PER GRATE (gpm)
A-PF01	2/PL302	MYRTHA BY DALDORADO: DaIMAX-MBD-183625	1.5	3.0	401	802	1984	P1A	722	2	361	0.29	476	0.38
B-PF01	2/PL302	MYRTHA BY DALDORADO: DaIMAX-MBD-183625	1.5	3.0	401	802	1984	P1B, P2B, P3B	552	2	276	0.22	758	0.61
C-PF01	2/PL302	MYRTHA BY DALDORADO: DaIMAX-MBD-183625	1.5	3.0	401	401	1984	GRAVITY PIPES	0	1	0	0.00	0	0.00
D-PF02	2/PL302	MYRTHA BY DALDORADO: DaIMAX-MBD-185434	1.5	4.5	802	1204	4412	PSD, P6D	3600	2	1800	0.96	2665	1.42
D-PF03	2/PL302	MYRTHA BY DALDORADO: DaIMAX-MBD-183628	1.5	3.0	401	802	2480	PTD, P2D	1299	2	649	0.52	917	0.73
E-PF01	2/PL302	MYRTHA BY DALDORADO: DaIMAX-MBD-183625	1.5	3.0	401	802	1984	P1E, P2E	923	2	461	0.37	728	0.58
F-PF04	1/PL302	DALDORADO: DaIMAX-SG-183625	1.5	3.0	401	802	1984	P1F, P2F	924	2	462	0.37	846	0.68

NOTE: THE SYSTEM MAXIMUM FLOW RATE AND VELOCITY HAS BEEN DETERMINED BY USING THE FLOW RATE AT THE END OF THE PUMP MANUFACTURER'S PUMP CURVE. ALL DRAIN/OUTLET SYSTEMS SHALL CONFORM WITH THE VIRGINIA GRAEME BAKER ACT AND TO CURRENT ANSI/APSP-16 STANDARD.

**SCHEDULE - POOL FIXTURES**

POOL ID	EQUIPMENT ID	FIXTURE	QTY.	MANUFACTURER	DESCRIPTION
A	PF 01	DaIMAX-MBD-183625	2	DALDORADO	SEE DRAIN SCHEDULE
B	PF 01	DaIMAX-MBD-183625	2	DALDORADO	SEE DRAIN SCHEDULE
B	PF 08	HYDROTHERAPY JET	12	HAYWARD	JET-AIR III HYDROTHERAPY FITTING MODEL # SP14343PAKA, 1" AIR CONNECTION, 1.5" WATER CONNECTION
C	PF 01	DaIMAX-MBD-183625	1	DALDORADO	SEE DRAIN SCHEDULE
D	PF 02	DaIMAX-MBD-185434	2	DALDORADO	SEE DRAIN SCHEDULE
D	PF 03	DaIMAX-MBD-183628	2	DALDORADO	SEE DRAIN SCHEDULE
E	PF 01	DaIMAX-MBD-183625	2	DALDORADO	SEE DRAIN SCHEDULE
F	PF 04	DaIMAX-SG-183625	2	DALDORADO	SEE DRAIN SCHEDULE
F	PF 05	WALL INLET	10	STAR-RITE	1-1/2" MOLDED ABS, WHITE IN COLOR
F	PF 06	SKIMMER	5	WATERWAY	COMMERCIAL RENEGADE GUNITE IN-GROUND SKIMMER WITH NSF50 APPROVAL FOR 75 GPM FLOW RATE, MANUFACTURED BY WATERWAY PLASTICS, CATALOG # 540-6390; MATERIALS: MOLDED PVC-PLASTIC SKIMMER WITH ROUND WHITE LID & FRAME, 2.5" SPIGOT X 2" NPT X 2" NPT CONNECTIONS, FLOAT/CHECK VALVE AND REMOVABLE CLEANING BASKET. PLUG EQUALIZER FITTING CONNECTION.
F	PF 07	HYDROTHERAPY JET	28	WATERWAY PLASTICS	GUNITE VENTURI TEES #212-3340, 1 1/2" S x 1" SPIGOT x 1 1/2" SPIGOT, 7/16" ORIFICE
F	PF 09	SUPPLY FITTING	8	HAYWARD	FITTING & GRATE COVER, WHITE IN COLOR

MECHANICAL BUILDING HAS 2 LEVELS:  
BASEMENT: POOL MECHANICAL ROOM, SEE PL400  
LEVEL 1: CHEMICAL STORAGE ROOMS, POOL HEATING SYSTEMS, AND OTHER BOH PROGRAMMING (OFFICES, STORAGE, ETC.), SEE PL401



1 OVERALL PIPING PLAN  
PLAN VIEW  
PL300  
1" = 10'-0"

12/20/2024 2:20:00 PM Autodesk Docs://Grand Junction Community Recreation Center/23357\_GJCRC\_Aquatics\_R24.rvt